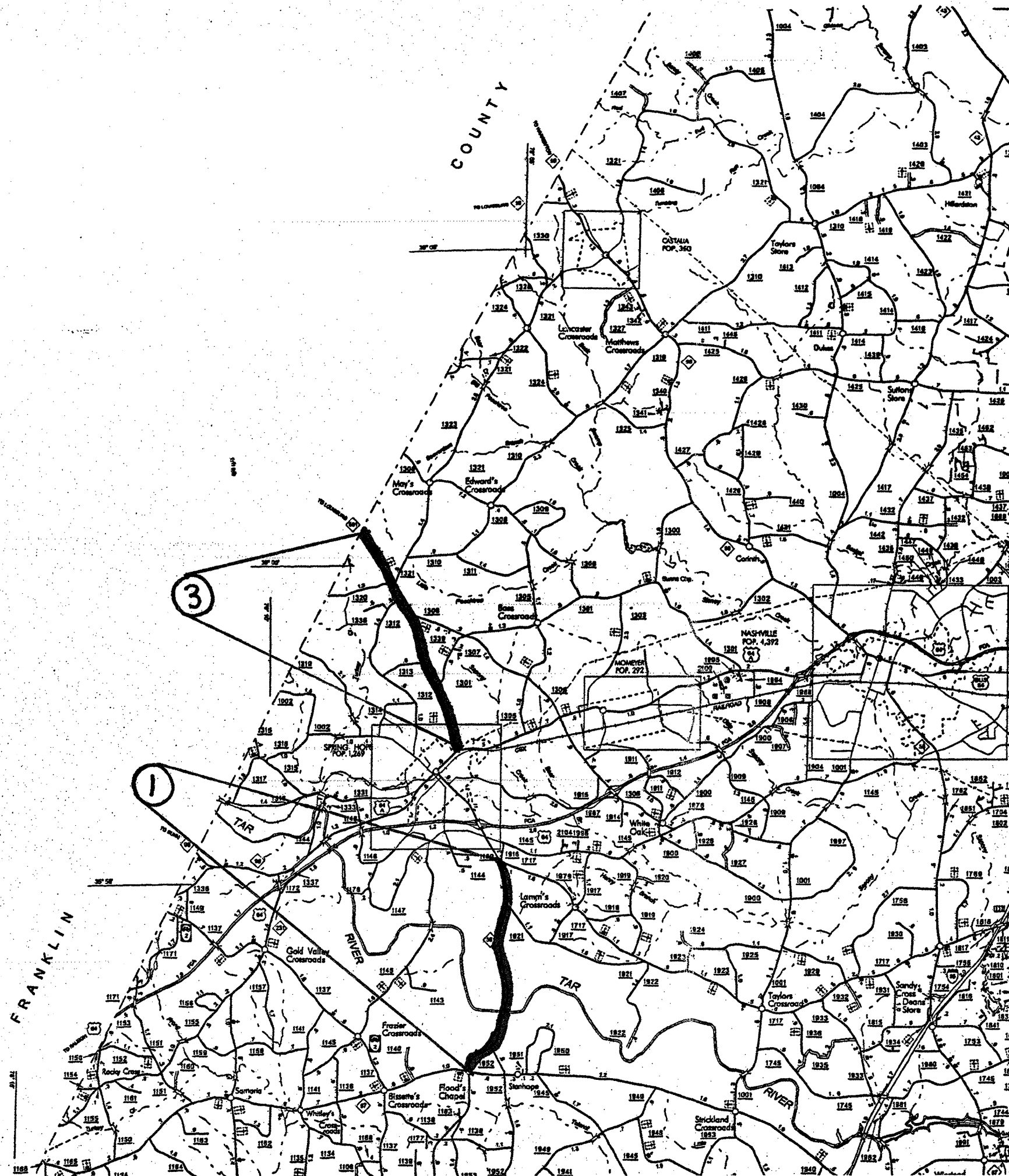


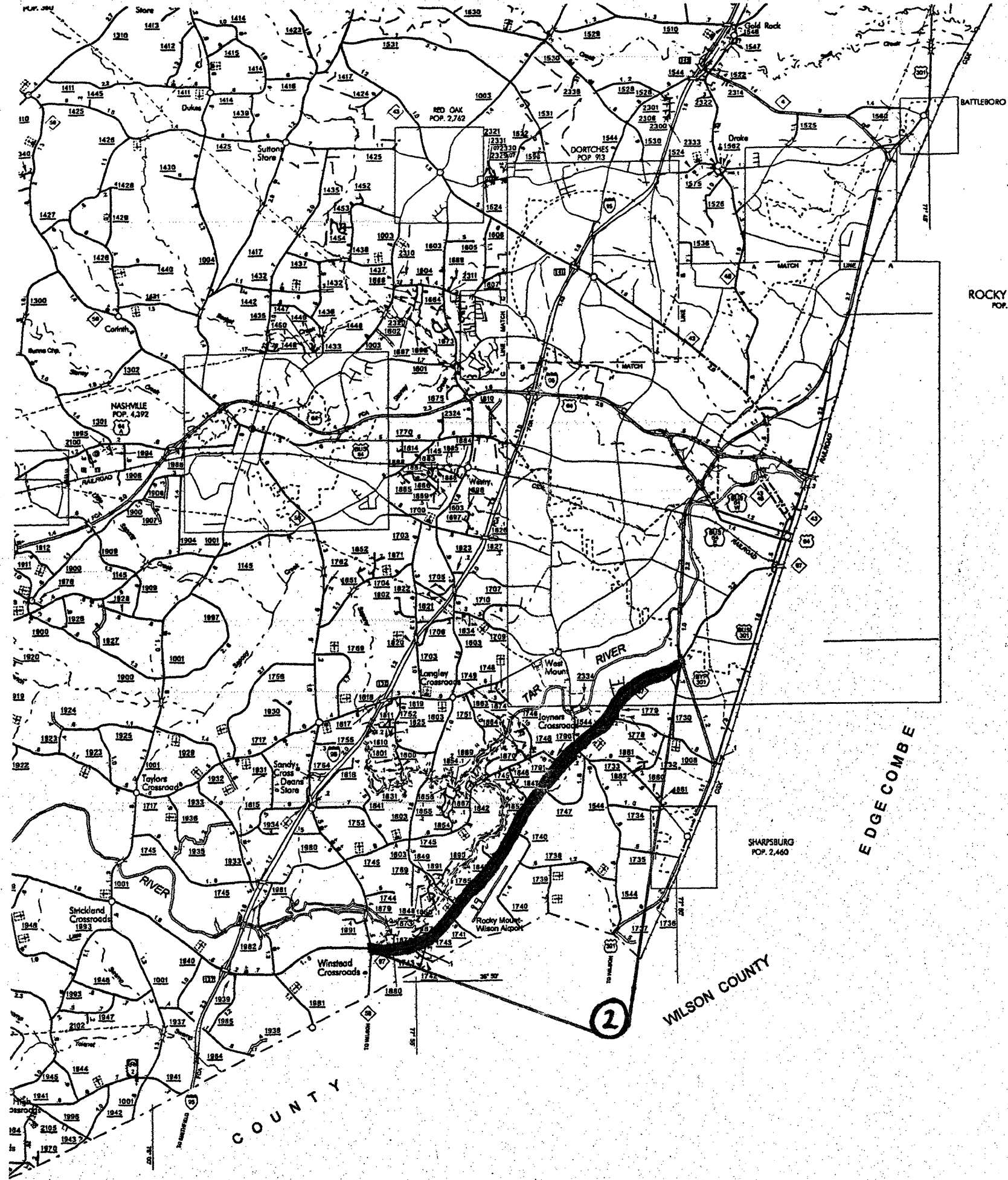
4CR. 10641.12
Sht. 1



NASH COUNTY

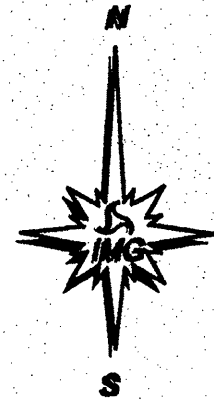


4CB.10641.12
Sht. 2



ROCKY MOUNT
POP. 56,160

NASH COUNTY



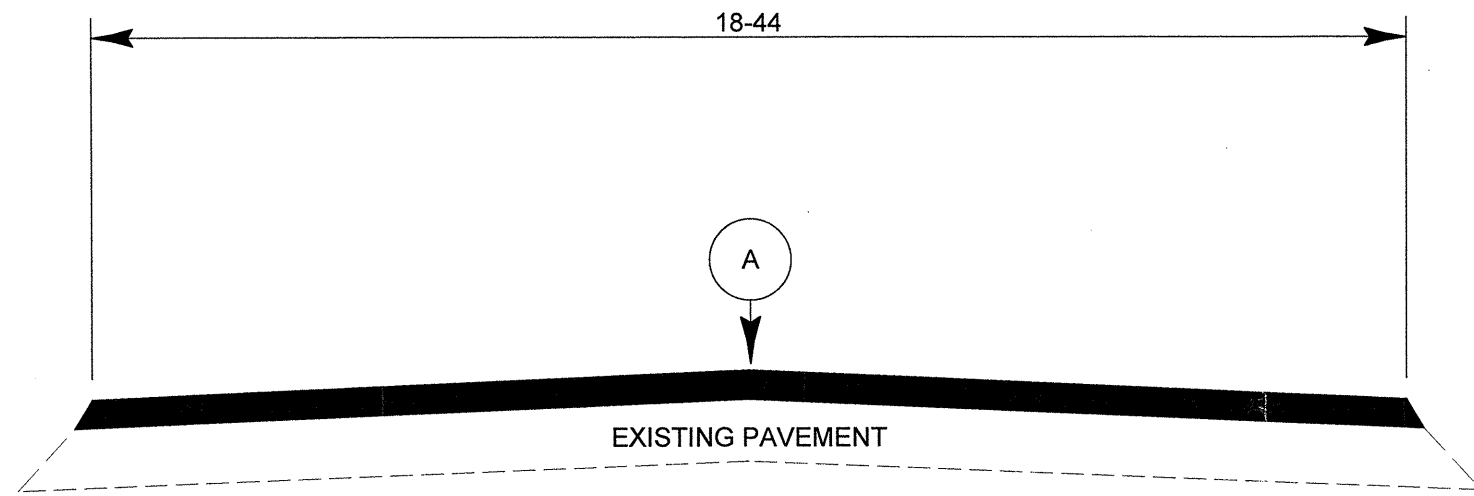
EDGE COMBE

WILSON COUNTY

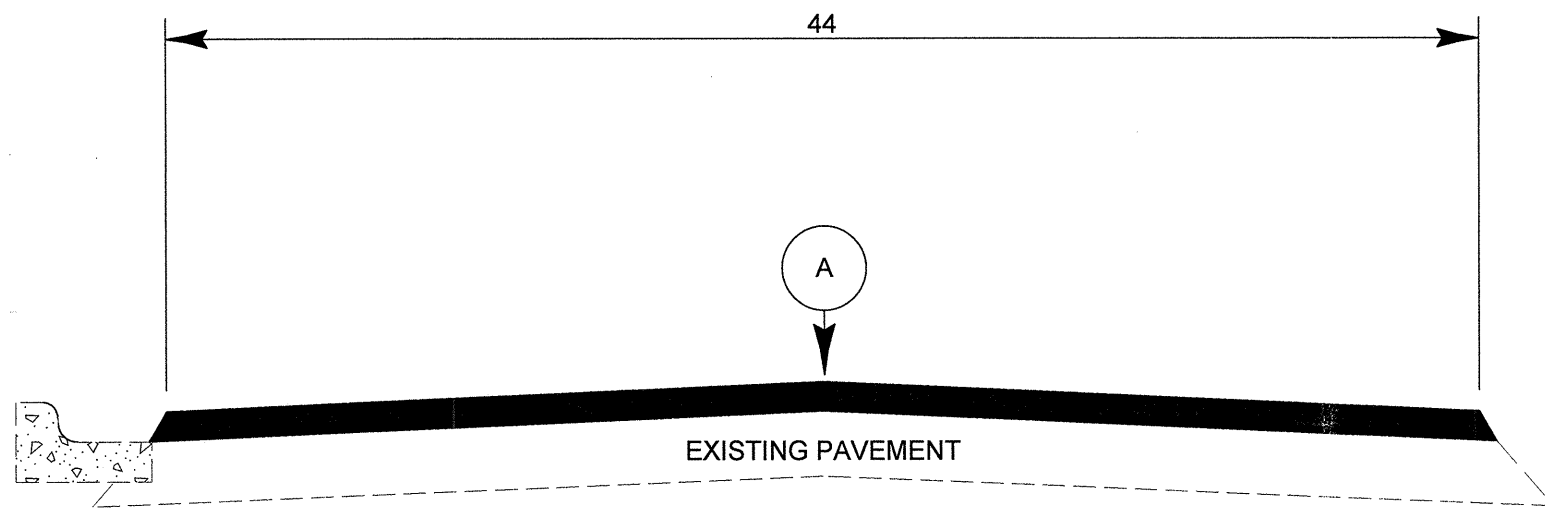
COUNTY

2

PROJECT NO. 4CR.10641.12	SHEET NO. 4	TOTAL SHEETS
-----------------------------	----------------	--------------



TYPICAL SECTION NO. 1



TYPICAL SECTION NO. 2

PAVEMENT SCHEDULE	
A	ASPHALT CONCRETE SURFACE COURSE TYPE S9.5B AT AN AVERAGE RATE OF 168 LBS PER SQ YD (1.5")

PROJECT NO.	SHEET NO.	TOTAL NO.
4CR.10641.12	5	

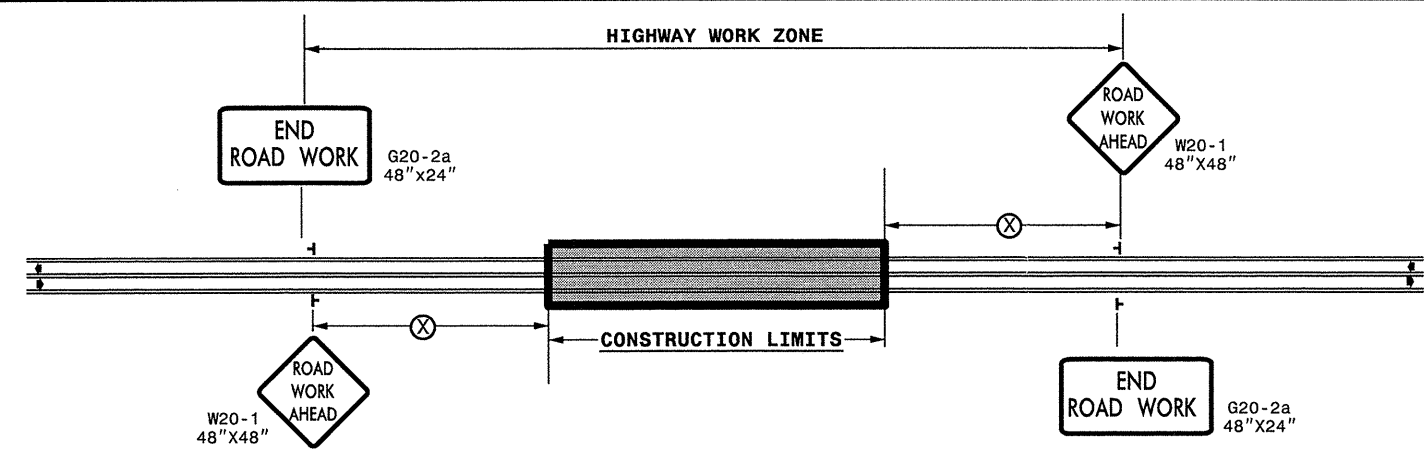
SUMMARY OF QUANTITIES

PROJECT NO	COUNTY	MAP NO	ROUTE	DESCRIPTION	TYP NO	FINAL SURFACE TESTING REQUIRED	LENGTH MI	WIDTH FT	SURFACE COURSE, S9.5B TONS	ASPHALT BINDER FOR PLANT MIX TONS	ADJ. OF MANHOLES EA	ADJ. OF METER OR VALVE BOX EA
4CR.10641.12	Nash	1	NC 581	FROM NC 97 TO JOINT AT SR 1717	1	NO	4.2	25	5,370	322		
TOTAL FOR MAP NO. 1							4.2		5,370	322		
4CR.10641.12	Nash	2	NC 97	FROM NC 58 TO BEGIN CURB AND GUTTER	1	NO	7.23	28	10,588	635		
		"	"	FROM BEGIN CURB AND GUTTER TO END CURB AND GUTTER	2	NO	0.2	44	435	26		
		"	"	FROM END CURB AND GUTTER TO JOINT PAST SR 1730	1	NO	0.12	28	166	10		
TOTAL FOR MAP NO. 2							7.55		11,189	671		
4CR.10641.12	Nash	3	NC 581	FROM US 64 ALT TO THE FRANKLIN COUNTY LINE	1	NO	4.436	24	5,459	328		
TOTAL FOR MAP NO. 3							4.436		5,459	328		
4CR.10641.12	Nash	4	NC 33	FROM US 301 TO JOINT AT WHITAKERS CITY LIMIT SIGN	1	NO	0.36	18	322	19	4	4
		"	"	FROM JOINT AT WHITAKERS CITY LIMIT SIGN TO NC 48	1	NO	4.92	22	5,434	326		
TOTAL FOR MAP NO. 4							5.28		5,756	345	4	4
TOTAL FOR PROJ NO. 4CR.10641.12							21.466		27,774	1,666	4	4
GRAND TOTAL							21.466		27,774	1,666	4	4

THERMOPLASTIC AND PAINT QUANTITIES

PROJECT NO	COUNTY	MAP NO	ROUTE	DESCRIPTION	LENGTH	WIDTH	4810000000-E		4820000000-E		4835000000-E	4840000000-N		4845000000-N			
							4" WHITE PAINT LF	4" YELLOW PAINT LF	8" YELLOW PAINT LF	8" WHITE PAINT LF	24" WHITE PAINT LF	PAINT MSG SCHOOL EA	PAINT MSG ONLY EA	PAINT LT ARROW EA	PAINT STR & RT ARROW EA	PAINT STR ARROW EA	PAINT RT ARROW EA
4CR.10641.12	Nash	1	NC 581	FROM NC 97 TO JOINT AT SR 1717	4.2	25	90,384	55,440	700		192	24		14			
TOTAL FOR MAP NO. 1					4.2		90,384	55,440	700		192	24		14			
4CR.10641.12	Nash	2	NC 97	FROM NC 58 TO BEGIN CURB AND GUTTER	7.23	28	155,590	95,436	1,050		216		18	6	6		
		"	"	FROM BEGIN CURB AND GUTTER TO END CURB AND GUTTER	0.2	44	2,272	10,560				16				14	
		"	"	FROM END CURB AND GUTTER TO JOINT PAST SR 1730	0.12	28	2,582	1,584									
TOTAL FOR MAP NO. 2					7.55		160,444	107,580	1,050		216		16	18	6	6	
4CR.10641.12	Nash	3	NC 581	FROM US 64 ALT TO THE FRANKLIN COUNTY LINE	4.436	24	95,463	58,555		100							
TOTAL FOR MAP NO. 3					4.436		95,463	58,555		100							
4CR.10641.12	Nash	4	NC 33	FROM US 301 TO JOINT AT WHITAKERS CITY LIMIT SIGN	0.36	18	7,747	4,752									
		"	"	FROM JOINT AT WHITAKERS CITY LIMIT SIGN TO NC 48	4.92	22	105,878	64,944									
TOTAL FOR MAP NO. 4					5.28		113,625	69,696									
TOTAL FOR PROJ NO. 4CR.10641.12					21.466		459,916	291,271	1,750	100	408	24	16	32	6	6	14
GRAND TOTAL								751,187	1,850		40		58				

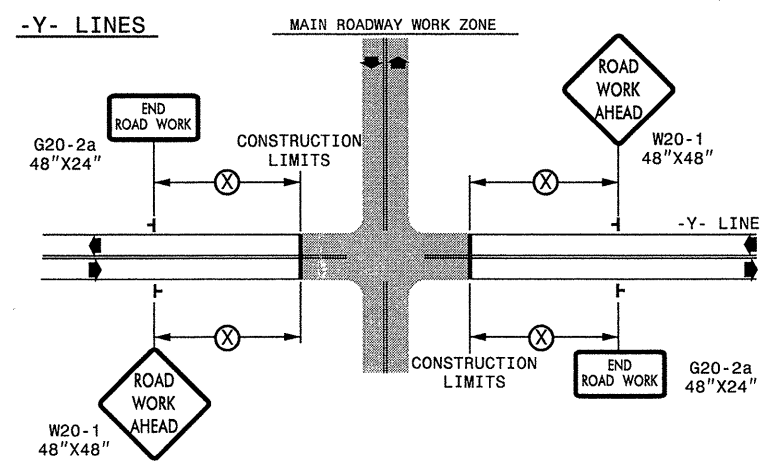
TWO-WAY UNDIVIDED ** (L-LINES)



POSTED SPEED LIMIT (M.P.H.)	RECOMMENDED MINIMUM SIGN SPACING
≤ 50	500'
≥ 55	1000'

STATE OF NORTH CAROLINA
DEPT. OF TRANSPORTATION
DIVISION OF HIGHWAYS
RALEIGH, N.C.

ROADWAYS INTERSECTING ALONG 2 WAY UNDIVIDED WORK ZONE (Y-LINES)



DETAIL DRAWING FOR
TWO-WAY UNDIVIDED
WORK ZONE WARNING SIGNS

GENERAL NOTES

- USE FLUORESCENT ORANGE SHEETING (TYPE VII OR HIGHER) ON ALL ADVANCED WORK ZONE SIGNS.
- DO NOT INSTALL ADVANCE WARNING SIGNS MORE THAN 3 DAYS PRIOR TO BEGINNING OF WORK.
- SIGNS SHOWN ARE REQUIRED FOR WORK ZONES THAT WILL REMAIN IN EFFECT OVERNIGHT. FOR SHORT-TERM DAILY MAINTENANCE TYPE OPERATIONS, THIS SIGNING APPLICATION IS OPTIONAL; MAY USE ONLY APPLICABLE ROADWAY STANDARD DRAWINGS INSTEAD. HOWEVER, IF THIS SIGNING APPLICATION IS USED, SIGNS MAY BE PORTABLE MOUNTED.
- ALL SIGN SPACING DIMENSIONS ARE APPROXIMATE, FIELD ADJUST AS NECESSARY OR AS DIRECTED.
- USE 3LB STEEL U-CHANNEL POST OR 4" X 4" WOOD POST FOR ALL WORK ZONE SIGNS. 3LB STEEL U-CHANNEL POSTS MUST MEET THE REQUIREMENTS OF STANDARD SPECIFICATION SECTION 1094-1(B), MAY BE GALVANIZED STEEL, OR MAY BE PAINTED GREEN BY THE POST MANUFACTURER. SQUARE STEEL TUBING POSTS HAVING EQUIVALENT STRENGTH OF THE 3 LB STEEL U-CHANNEL POST ARE ALSO ACCEPTABLE FOR USE. ERECT SIGNS PER ROADWAY STANDARD DRAWING 1110.01. PAYMENT FOR WOOD POSTS, 3LB STEEL U-CHANNEL AND SQUARE STEEL TUBING POSTS WITH SIGNS WILL BE MADE ACCORDING TO STANDARD SPECIFICATION "WORK ZONE SIGNS" SECTION 1110.
- WHEN NECESSARY, USE SPLICING IN ACCORDANCE WITH ROADWAY STANDARD DRAWING NO. 1110.01. REMOVE ENTIRE POST WHEN REMOVING SIGNS WITH SPLICED POSTS.
- DO NOT BACK BRACE SIGN SUPPORTS.
- ** TWO-WAY UNDIVIDED ADVANCE WARNING SIGN CONFIGURATION MAY BE USED ON URBAN MULTI-LANE FACILITIES WHERE CONDITIONS LIMIT THE USE OF DUAL MOUNTED SIGNS AS DETERMINED BY THE ENGINEER.

LEGEND

┆ STATIONARY SIGN

◀ DIRECTION OF TRAFFIC FLOW

SHEET 1 OF 1

APPROVED: _____ DATE: _____	DETAIL DRAWING FOR TWO-WAY UNDIVIDED AND URBAN FREEWAYS ADVANCED WORK ZONE WARNING SIGNS		
SEAL	SCALE: NONE		
	DATE: _____		REVISIONS
	DWG. BY: _____		7-98 10/01
	DESIGN BY: _____		10-98 03/04
REVIEWED BY: _____	01/01 11/04	CARD FILE	






29-SEP-2011 15:44
 \\DOT\DFSROOT\101\GROUPS-WZTCC\TMU\WZTC\Resurfacing\2011\Resurfacing\2011\Div04\C202867_4CR\064112_Nash_AKP\Final Out\C202867_4CR\064112_Nash_2way_Undiv_&_Urban\Fr.wys_stationary.dgn
 akpatel AT TE24748

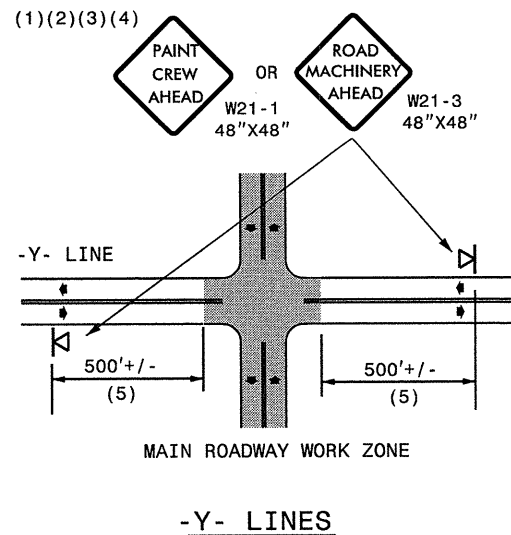
GENERAL NOTES

- (1) THE FOLLOWING OPTIONS MAY BE USED FOR ADVANCE WARNING SIGNS:
 - A. TRUCK MOUNTED SIGNS
 - B. TRUCK MOUNTED CHANGEABLE MESSAGE SIGN (CMS)
 - C. GROUND MOUNTED ADVANCE WARNING SIGNS (MUST CIRCLE TO PICK UP SIGNS)
 - D. GROUND MOUNTED CHANGEABLE MESSAGE SIGN (CMS) (MUST USE CIRCLE TO PICK UP SIGNS)
- (2) ALL ADVANCE WARNING SIGNS MUST BE 48" X 48" WITH FLUORESCENT ORANGE TYPE VII, VIII OR IX SHEETING. IF SPACE LIMITATIONS ON SHOULDER PROHIBIT A 48" X 48" SIGN, A SMALLER SIGN CAN BE USED WITH APPROVAL FROM ENGINEER.
- (3) SIGNS ON VEHICLES SHOULD BE MOUNTED A MINIMUM OF ONE (1) FOOT FROM THE GROUND AND SHOULD NOT BLOCK THE MOTORIST'S SIGHT OF THE FLASHING ARROW PANEL AND/OR LIGHTBAR.
- (4) GROUND MOUNTED ADVANCED WARNING SIGNS SHOULD BE MOUNTED A MINIMUM OF ONE (1) FOOT FROM THE GROUND TO BOTTOM OF SIGN.
- (5) SIGN SPACING SHOULD BE ADJUSTED FOR HORIZONTAL AND VERTICAL CURVES, ETC. TO IMPROVE SIGHT DISTANCES.
- (6) ADDITIONAL VEHICLES SHOULD BE USED IN WORK CARAVAN TO FACILITATE DRYING OF PAVEMENT MARKING MATERIAL (TMIA'S ARE OPTIONAL ON THESE ADDITIONAL VEHICLES). HOWEVER, THE FIRST VEHICLE MOTORISTS SEE IN THE TRAVEL LANE SHALL HAVE A TMIA.

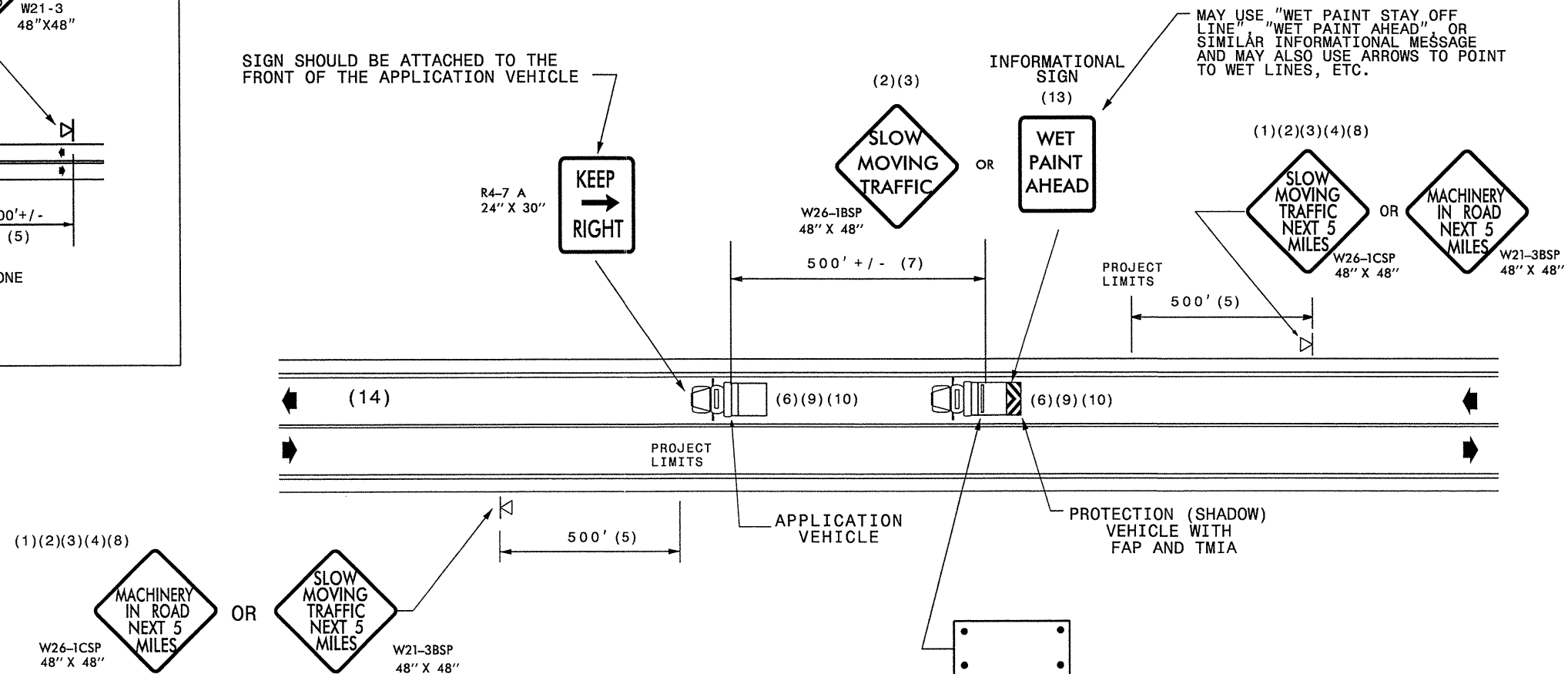
- (7) ADJUST DISTANCE AS NEEDED TO PREVENT MOTORISTS FROM ENTERING SPACE BETWEEN THE APPLICATION AND PROTECTION VEHICLE. DISTANCE CAN BE LENGTHENED TO ACCOMODATE SIGHT DISTANCE NEEDS.
- (8) ROUND UP MILEAGE TO NEXT WHOLE MILE. WORK ZONE SHOULD NOT EXCEED FIVE (5) MILES IN LENGTH.
- (9) RADIO COMMUNICATION BETWEEN VEHICLES IS REQUIRED.
- (10) USE OF A LIGHT BAR ON ALL VEHICLES IS PREFERRED, BUT A ROTATING BEACON MAY BE USED INSTEAD.
- (11) IF WORK IS PERFORMED AT NIGHT, THE WORK AREA MUST BE ILLUMINATED WITH MACHINE AND/OR TOWER LIGHTS AS APPROVED BY THE ENGINEER.
- (12) ALL TRAFFIC CONTROL DEVICES WILL BE CONSIDERED INCIDENTAL TO THE PAY ITEMS FOR PAVEMENT MARKING AND MARKERS.
- (13) INFORMATIONAL SIGNS SHOULD BE ACTIVITY SPECIFIC, i.e. "PAINT CREW IN ROAD". SIGNS MAY BE RECTANGULAR OR DIAMOND SHAPE. SIGN SIZE SHOULD BE BASED ON THE MOTORIST ABILITY TO RECOGNIZE SIGN WHEN TRAVELING FIVE (5) MILES ABOVE POSTED SPEED LIMIT.
- (14) IF A LEAD VEHICLE IS ADDED TO OPERATION, IT SHOULD HAVE THE SAME ADVANCE WARNING SIGNS AS THE APPLICATION VEHICLE SHOWN BELOW.

LEGEND

-  PORTABLE SIGN. SIGNS MUST BE NCHRP-350 AND NCDOT APPROVED.
-  DIRECTION OF TRAFFIC FLOW
-  APPLICATION VEHICLE WITH LIGHT BAR
-  PROTECTION VEHICLE WITH TRUCK MOUNTED IMPACT ATTENUATOR (TMIA) AND LIGHT BAR (SEE ROADWAY STANDARD NO. 1165.01). TMIA MUST BE NCHRP-350 TEST LEVEL 3 (60+MPH) APPROVED.
-  FLASHING ARROW PANEL, TYPE "B" (60"X30" MIN.), "CAUTION MODE"



SIGN SHOULD BE ATTACHED TO THE FRONT OF THE APPLICATION VEHICLE



MOVING OPERATION CARAVAN

(OPERATIONS TRAVELING 3 MPH OR FASTER)
PLACING PAVEMENT MARKING OR MARKERS
ON TWO-LANE TWO-WAY ROADWAYS

DRAWING NUMBER 6
IMPLEMENTATION DATE: 07/01/97
REVISED: 11/03/04