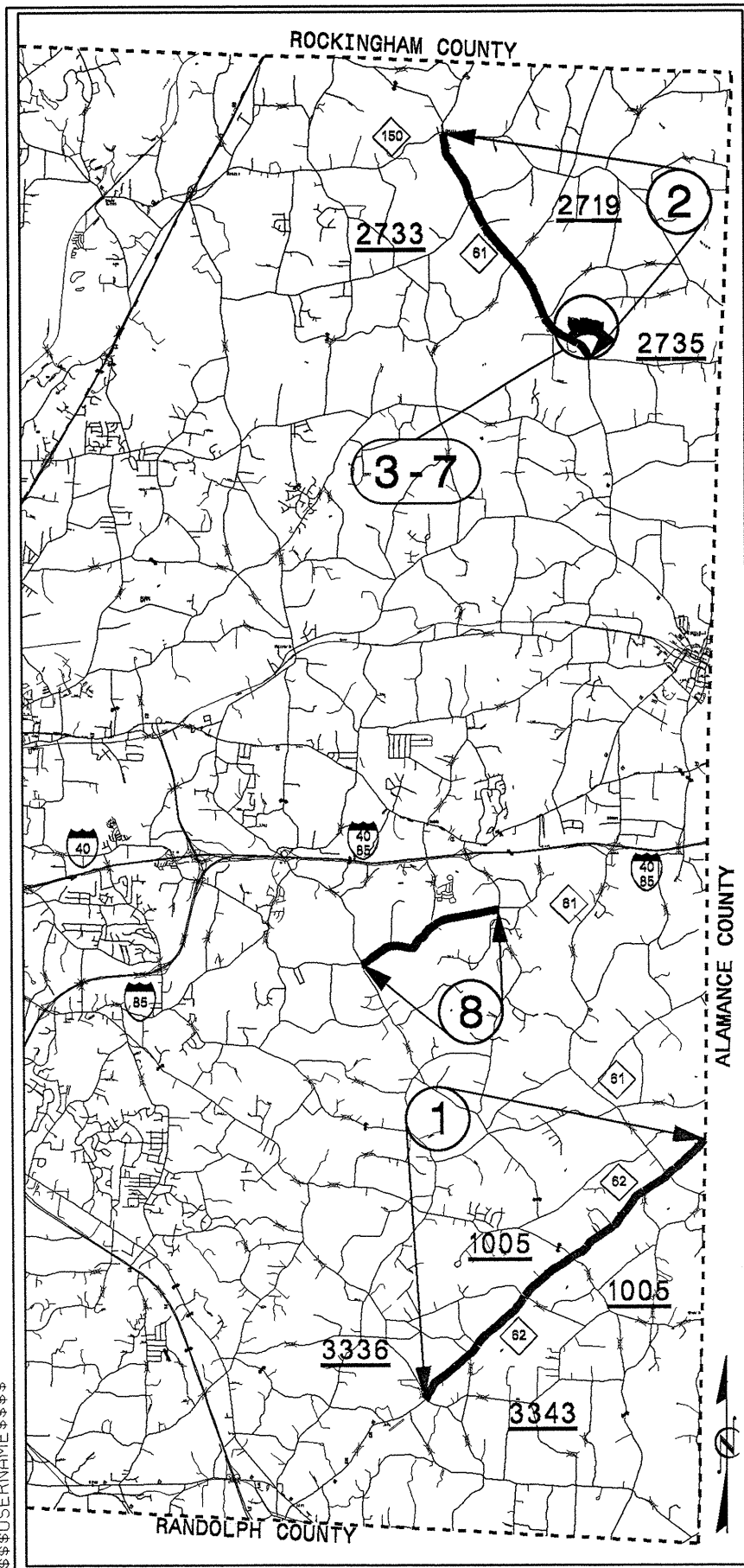
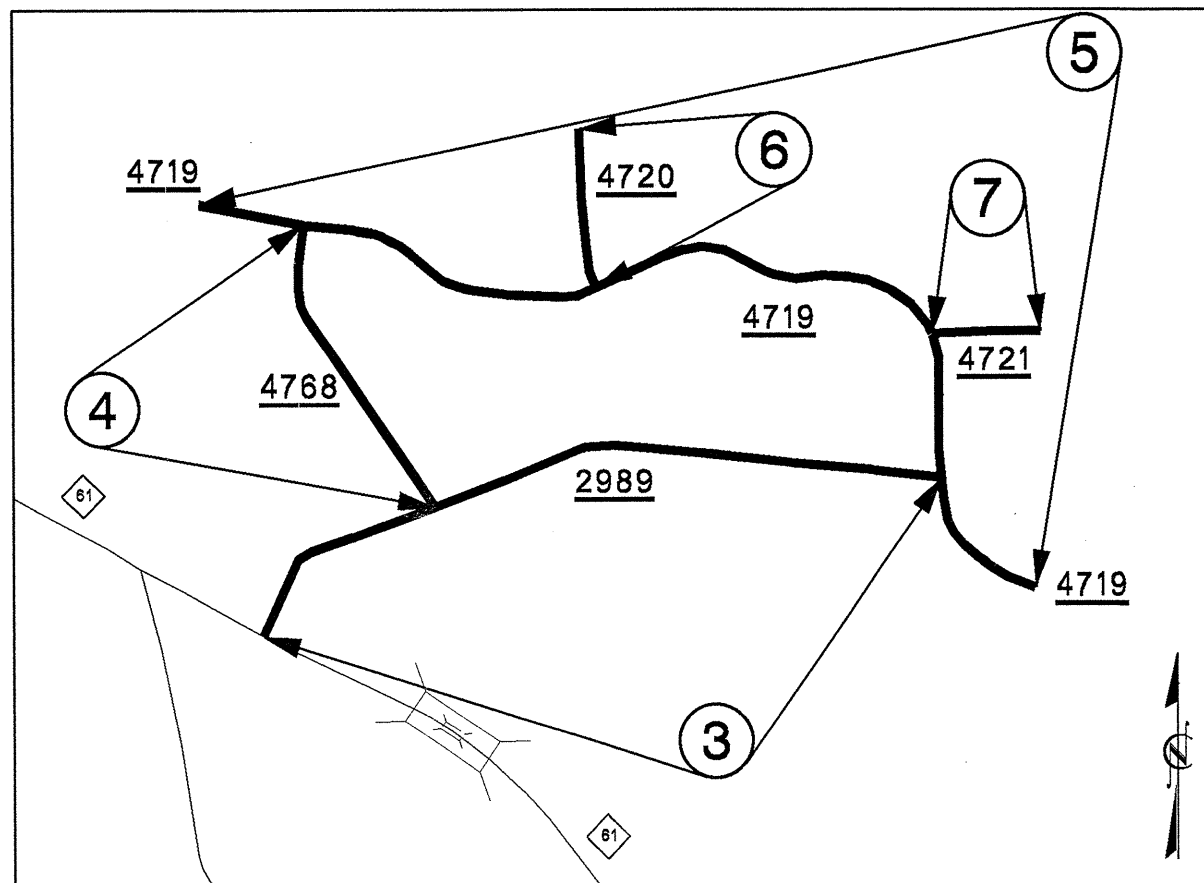


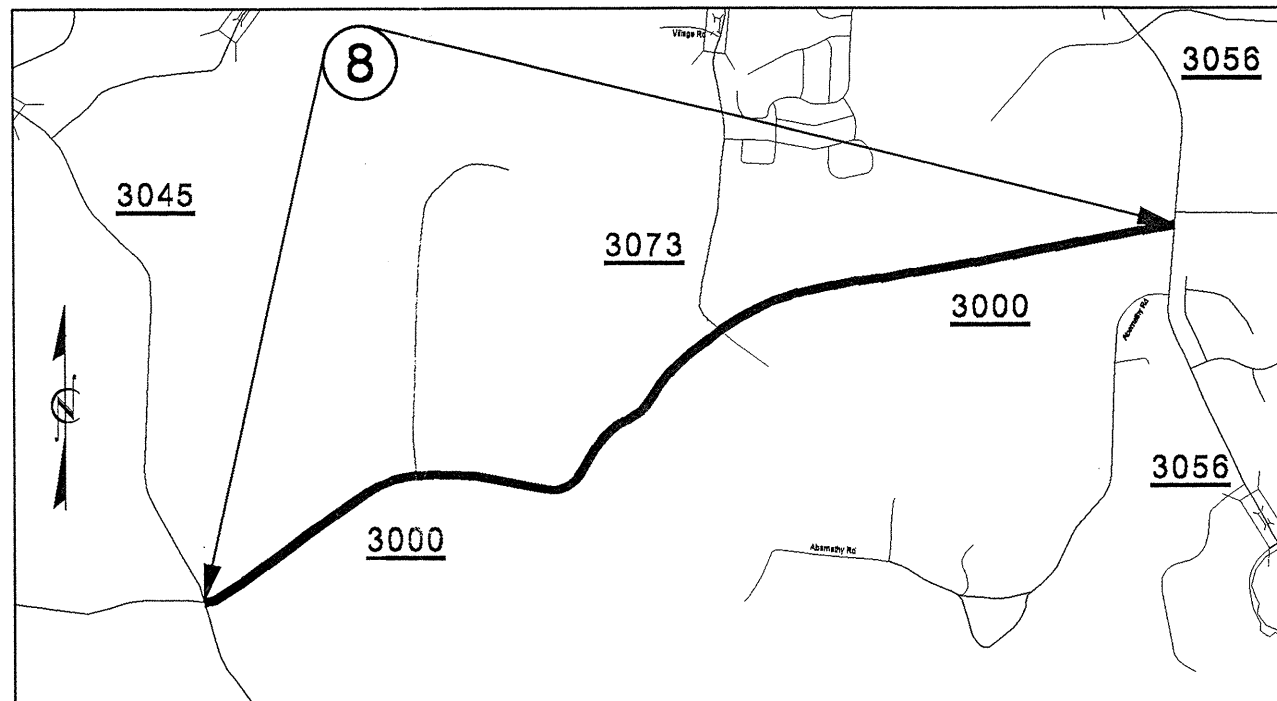
12-OCT-2011 13:15  
 S:\Contracts\Resurfacing Projects\Division 7\Guilford\CADD\vicinity-shi.dgn  
 \$\$\$USERNAME\$\$\$



MAPS 3-7



MAP 8

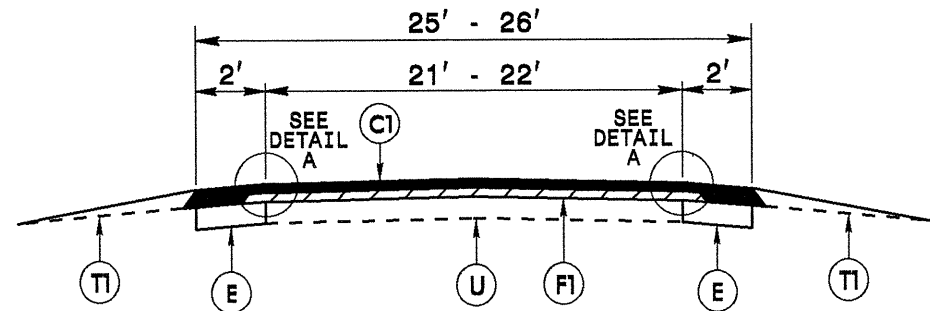


STATE	PROJECT NO.	SHEET NO.	TOTAL SHEETS
N.C.	7CR.10411.37, ETC	1	4
F.A. PROJ. NO.			

7CR.10411.37  
 7CR.20411.37

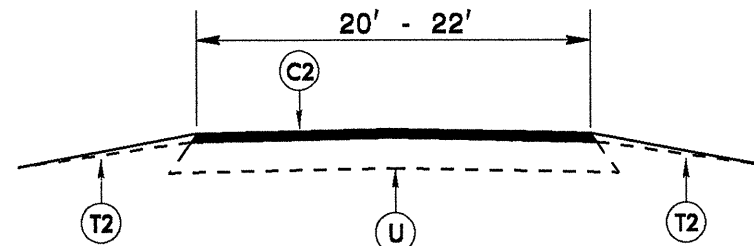
# 2012 GUILFORD COUNTY

STATE	PROJECT NO.	SHEET NO.	TOTAL SHEETS
N.C.	7CR.10411.37, 7CR.20411.37	2	4



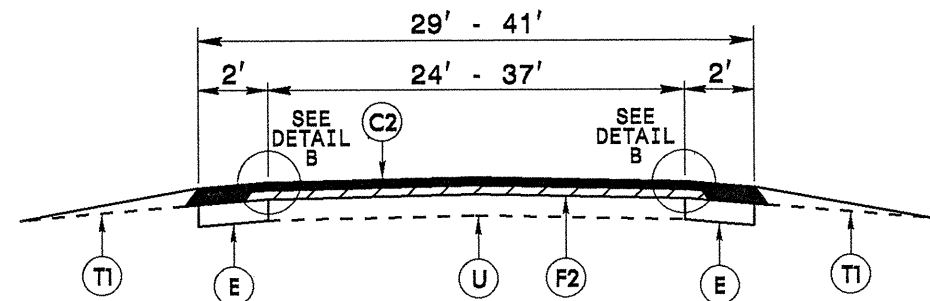
\*NOTE: NO PAVEMENT ON BRIDGE #151  
STA. 187+75 TO STA. 188+15

**TYPICAL SECTION NO. 1**  
TO BE USED ON MAP 1



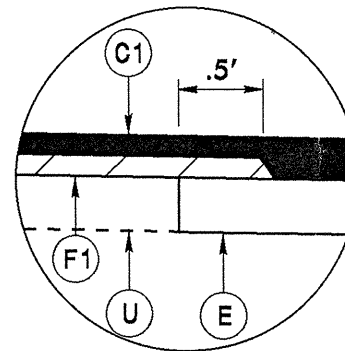
**TYPICAL SECTION NO. 5**  
TO BE USED ON MAP 8

STA. 74+45 TO STA. 131+45

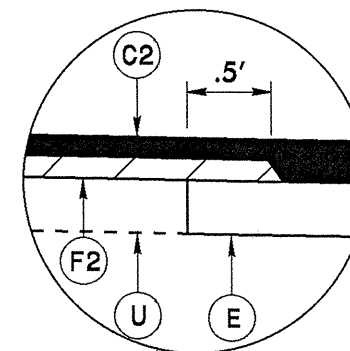


\*NOTE: NO PAVEMENT ON BRIDGE #195  
STA. 15+10 TO STA. 17+65

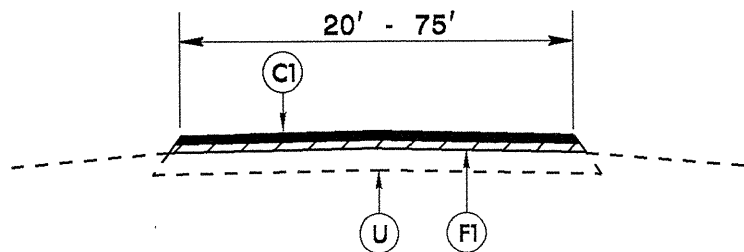
**TYPICAL SECTION NO. 2**  
TO BE USED ON MAP 2



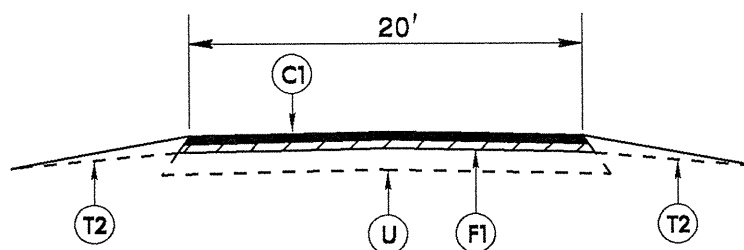
**DETAIL A**



**DETAIL B**

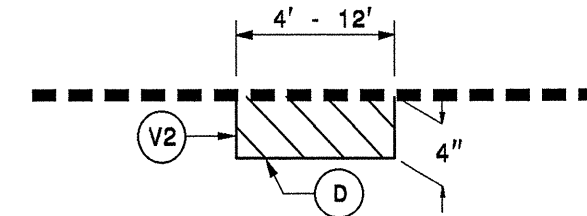


**TYPICAL SECTION NO. 3**  
TO BE USED ON MAPS 3, 4, 5, 6, AND 7



**TYPICAL SECTION NO. 4**  
TO BE USED ON MAP 8  
STA. 0+00 TO STA. 74+45

**PATCHING DETAIL 2**

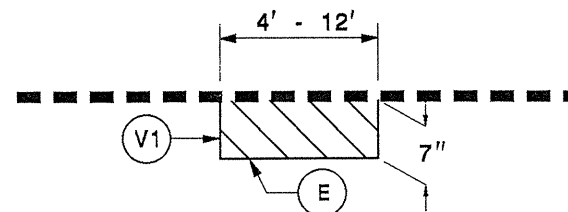


USE FOR PATCHING ON MAPS 2, 3, AND 8  
MILL EXISTING ASPHALT PAVEMENT 4" IN DEPTH  
AND FILL WITH INTERMEDIATE COURSE, TYPE  
I19.0B AT LOCATIONS AS DIRECTED BY THE  
ENGINEER.

- MAP 2: 4" MILLING = 1196 SYD  
INTERMEDIATE COURSE, TYPE I19.0B = 273 TON
- MAP 3: 4" MILLING = 204 SYD  
INTERMEDIATE COURSE, TYPE I19.0B = 47 TON
- MAP 8: 4" MILLING = 386 SYD  
INTERMEDIATE COURSE, TYPE I19.0B = 88 TON

\*\*NOTE: EACH MAP MUST BE PATCHED AS DIRECTED BY  
THE ENGINEER BEFORE PROCEEDING WITH RESURFACING\*\*

**PATCHING DETAIL 1**



USE FOR PATCHING ON MAPS 1, 2, 4, 5, AND 8

MILL EXISTING ASPHALT PAVEMENT 7" IN DEPTH  
AND FILL WITH BASE COURSE, TYPE B25.0B AT  
LOCATIONS AS DIRECTED BY THE ENGINEER.

- MAP 1: 7" MILLING = 429 SYD  
BASE COURSE, TYPE B25.0B = 171 TON
- MAP 2: 7" MILLING = 222 SYD  
BASE COURSE, TYPE B25.0B = 89 TON
- MAP 4: 7" MILLING = 22 SYD  
BASE COURSE, TYPE B25.0B = 9 TON
- MAP 5: 7" MILLING = 32 SYD  
BASE COURSE, TYPE B25.0B = 13 TON
- MAP 8: 7" MILLING = 72 SYD  
BASE COURSE, TYPE B25.0B = 29 TON

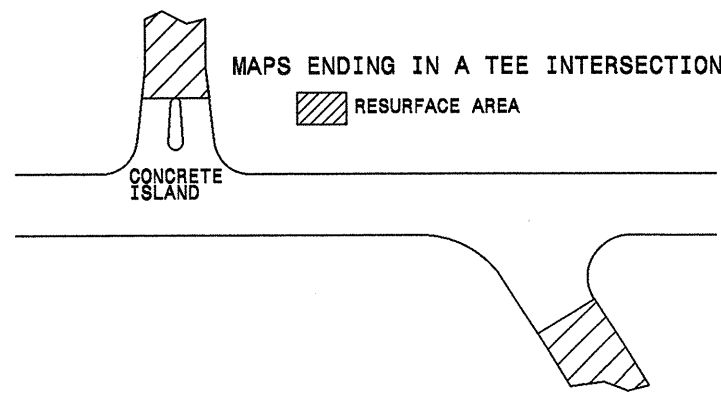
**PAVEMENT SCHEDULE**

C1	PROP. APPROX. 1 1/4" ASPHALT CONCRETE SURFACE COURSE, TYPE SF9.5A, AT AN AVERAGE RATE OF 137.5 LBS. PER SQ. YD.
C2	PROP. APPROX. 1 1/2" ASPHALT CONCRETE SURFACE COURSE, TYPE SF9.5A, AT AN AVERAGE RATE OF 165 LBS. PER SQ. YD.
D	PROP. APPROX 4" ASPHALT CONCRETE INTERMEDIATE COURSE TYPE I19.0B, AT AN AVERAGE RATE OF 456LBS. PER SQ. YD.
E	PROP. APPROX. 7" ASPHALT CONCRETE BASE COURSE, TYPE B25.0B, AT AN AVERAGE RATE OF 399 LBS. PER SQ. YD. IN EACH OF TWO LAYERS
F1	AST MAT COAT #78M STONE
F2	AST MAT COAT #67 STONE
T1	SHOULDER RECONSTRUCTION, AS DIRECTED BY THE ENGINEER.
T2	INCIDENTAL STONE BASE IN LOW SHOULDER AREAS, AS DIRECTED BY THE ENGINEER.
U	EXISTING PAVEMENT.
V1	7" MILLING
V2	4" MILLING

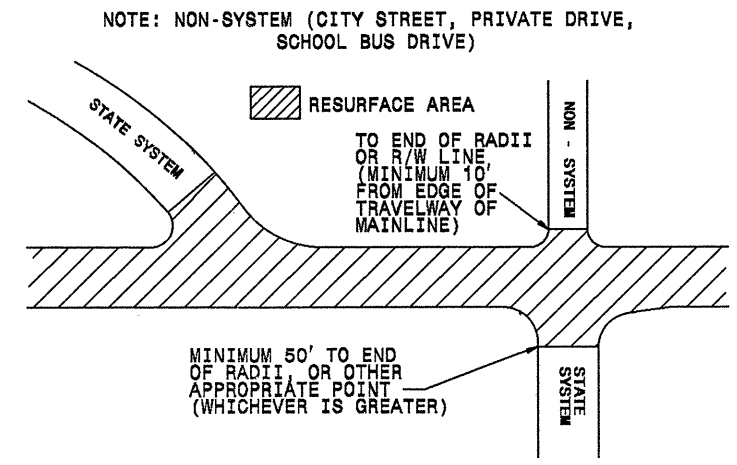
12-OCT-2011 13:44  
 C:\Users\jwain\Documents\Projects\Resurfacing Projects\Division 7\gulford\CADD\typical1.dgn  
 2011.10.13.13:44  
 2011.10.13.13:44

STATE	PROJECT NO.	SHEET NO.	TOTAL SHEETS
N.C.	7CR.10411.37, 7CR.20411.37	3	4

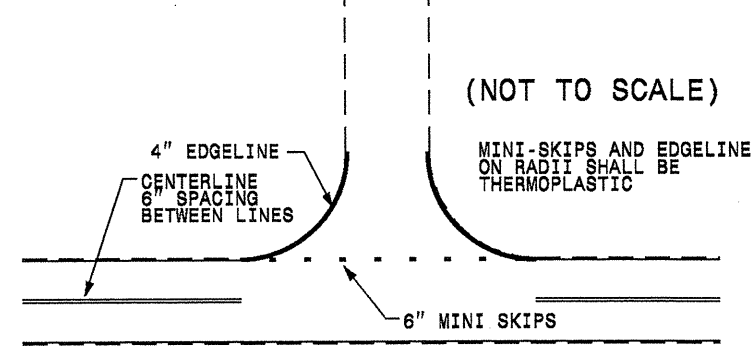
**PAVING DETAIL 1  
MAIN LINE IS NOT BEING RESURFACED**



**PAVING DETAIL 2  
MAIN LINE IS BEING RESURFACED**

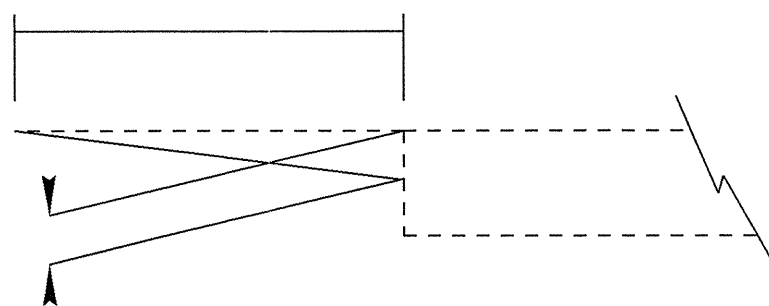


TO BE USED AT ALL  
NON-SIGNALIZED INTERSECTIONS

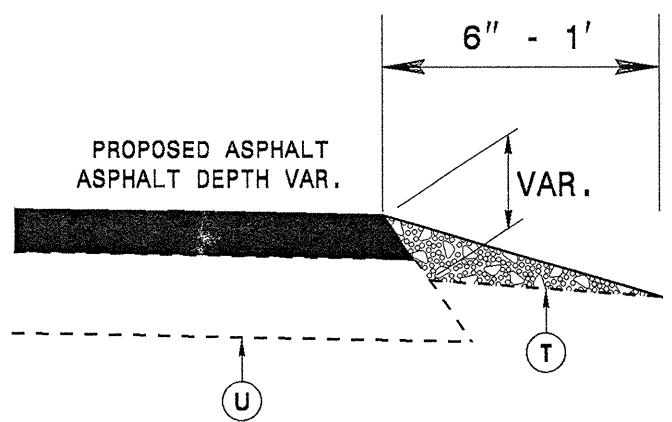


NOTE: MINI SKIPS SHALL BE PLACED ON A 10' CYCLE, CONTAINING AN 8' AND 2' SKIP, THE WIDTH OF THE SKIP SHALL BE 6'.

**INCIDENTAL MILLING DETAIL**

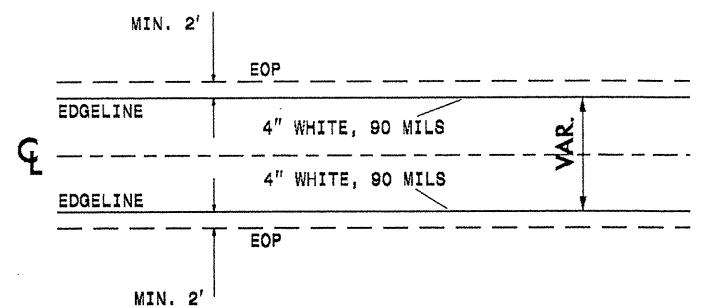


**INCIDENTAL STONE SHOULDER DETAIL**



NOTE: ASB OR ABC STONE SHOULD BE PLACE AT THE DESGRESSION OF THE ENGINEER

**STRIPING DETAIL 1  
GENERAL STRIPING DETAIL FOR ENTIRE PROJECT**



NOTE:  
1. TO BE USED IN CONJUNCTION WITH TYPICAL SECTION NO. 1 AND 2  
2. USE IN CONJUNCTION WITH THE EXISTING PAVEMENT MARKINGS TO ESTABLISH THE STRIPING.  
3. USE IN CONJUNCTION WITH THE NCDOT STANDARD DRAWINGS.

\*\*NOTE: EACH MAP MUST BE PATCHED AS DIRECTED BY THE ENGINEER BEFORE PROCEEDING WITH RESURFACING\*\*

**PAVEMENT SCHEDULE**

C1	PROP. APPROX. 1 1/4" ASPHALT CONCRETE SURFACE COURSE, TYPE SF9.5A, AT AN AVERAGE RATE OF 137.5 LBS. PER SQ. YD.
C2	PROP. APPROX. 1 1/2" ASPHALT CONCRETE SURFACE COURSE, TYPE SF9.5A, AT AN AVERAGE RATE OF 165 LBS. PER SQ. YD.
D	PROP. APPROX 4" ASPHALT CONCRETE INTERMEDIATE COURSE TYPE I19.0B, AT AN AVERAGE RATE OF 456LBS. PER SQ. YD.
E	PROP. APPROX. 7" ASPHALT CONCRETE BASE COURSE, TYPE B25.0B, AT AN AVERAGE RATE OF 399 LBS. PER SQ. YD. IN EACH OF TWO LAYERS
F1	AST MAT COAT #78M STONE
F2	AST MAT COAT #67 STONE
T1	SHOULDER RECONSTRUCTION, AS DIRECTED BY THE ENGINEER.
T2	INCIDENTAL STONE BASE IN LOW SHOULDER AREAS, AS DIRECTED BY THE ENGINEER.
U	EXISTING PAVEMENT.
V1	7" MILLING
V2	4" MILLING

2-OCT-2011 13:14 C:\Contracts\Resurfacing Projects\Division 7\guilford\CADD\typical1.dgn  
 \$\$\$\$\$\$  
 \$\$\$\$\$\$

## SUMMARY OF QUANTITIES

PROJECT NO. 7CR.10411.37, 7CR.20411.37	SHEET NO. 4	TOTAL NO.
---	----------------	-----------

PROJECT NO	COUNTY	MAP NO	ROUTE	DESCRIPTION	TYP NO	FINAL SURFACE TESTING REQUIRED	LENGTH MI	WIDTH FT	BORROW EXCAVATION CY	INCIDENTAL STONE BASE TONS	SHOULDER RECONSTRUCTION SMI	MILLING ASPHALT PAVEMENT, 7" DEPTH SY	MILLING ASPHALT PAVEMENT, 4" DEPTH SY	INCIDENTAL MILLING SY	ASPHALT CONC BASE COURSE, TYPE B25.0B TONS	ASPHALT CONC INTERMEDIATE COURSE, TYPE I19.0B TONS	ASPHALT CONC SURFACE COURSE, TYPE SF9.5A TONS	ASPHALT BINDER FOR PLANT MIX TONS	ASPHALT SURFACE TREATMENT, MAT COAT, #78M STONE SY	GENERIC PAVING ITEM - [ASPHALT SURFACE TREATMENT, MAT COAT, #67 STONE] SY	SEEDING & MULCHING AC	RESIDENTIAL SEEDING AC			
7CR.10411.37	Guilford	1	NC 62	FROM SR 3343 (COBLE CHURCH ROAD) TO ALAMANCE COUNTY LINE	1	NO	3.556	21	25	313	6.17	429		175	3,986		3,616	418	45,894		1.12	1.12			
				BRIDGE #151	1	NO	0.008	22																	
					1	NO	2.608	21									175	2,798		2,652	301	33,660			
		2	NC 61	FROM SR 2735 (SOCKWELL ROAD) TO NC 150	2	NO	0.286	24	25	195	8.87	222	1,196	200	396	273	391	57		4,194	1.61	1.61			
				BRIDGE #195	2	NO	0.048	24																	
					2	NO	4.083	24								200	4,381		5,783	580	59,889				
					2	NO	0.019	24-37									20		33	3	350				
<b>TOTAL FOR PROJ NO. 7CR.10411.37</b>							<b>10.608</b>		<b>50</b>	<b>508</b>	<b>15.04</b>	<b>651</b>	<b>1,196</b>	<b>750</b>	<b>11,581</b>	<b>273</b>	<b>12,475</b>	<b>1,359</b>	<b>79,554</b>	<b>64,433</b>	<b>2.73</b>	<b>2.73</b>			
7CR.20411.37	Guilford	3	SR 2989 (DEERMONT ROAD)	FROM NC 61 TO SR 4719 (LAUREL POINT DRIVE)	3	NO	0.487	20		18			204			47	415	30	5,714						
		4	SR 4768 (BUCK SPRINGS TRAIL)	FROM SR 4719 (LAUREL POINT DRIVE) TO SR 2989 (DEERMONT ROAD)	3	NO	0.211	20		13		22			9		171	12	2,476						
		5	SR 4719 (LAUREL POINT DRIVE)	FROM END OF MAINTENANCE TO CUL-DE-SAC	3	NO	0.754	20		28		32			13		666	45	8,847						
		6	SR 4720 (WALNUT RIDGE ROAD)	FROM SR 4719 (LAUREL POINT DRIVE) TO END OF MAINTENANCE	3	NO	0.1	20		3							96	6	1,173						
		7	SR 4721 (ROUND STONE COURT)	FROM SR 4719 (LAUREL POINT DRIVE) TO CUL-DE-SAC	3	NO	0.065	20		5							68	5	763						
		8	SR 3000 (MCCONNELL ROAD)	FROM SR 3045 (MT. HOPE CHURCH ROAD) TO SR 3056 (ROCK CREEK DAIRY ROAD)	4	NO	1.41	20		80		72	386		29	88	1,413	100	16,544						
					5	NO	0.388	20										378	25						
					5	NO	0.038	20-22											39	3					
					5	NO	0.653	22											699	47					
<b>TOTAL FOR PROJ NO. 7CR.20411.37</b>							<b>4.106</b>			<b>147</b>		<b>126</b>	<b>590</b>		<b>51</b>	<b>135</b>	<b>3,945</b>	<b>273</b>	<b>35,517</b>						
<b>GRAND TOTAL</b>							<b>14.714</b>		<b>50</b>	<b>655</b>	<b>15.04</b>	<b>777</b>	<b>1,786</b>	<b>750</b>	<b>11,632</b>	<b>408</b>	<b>16,420</b>	<b>1,632</b>	<b>115,071</b>	<b>64,433</b>	<b>2.73</b>	<b>2.73</b>			

## THERMOPLASTIC AND PAINT QUANTITIES

PROJECT NO	COUNTY	MAP NO	ROUTE	DESCRIPTION	LENGTH	WIDTH	4685000000-E	4686000000-E	4688000000-E	4710000000-E	4810000000-E		4900000000-N		4905000000-N	
							4" X 90 M WHITE THERMO LF	4" X 120 M YELLOW THERMO LF	6" X 90 M WHITE THERMO LF	24" X 120 M WHITE THERMO LF	4" WHITE PAINT LF	4" YELLOW PAINT LF	CRYSTAL & RED MARKERS EA	YELLOW & YELLOW MARKERS EA	SNOWPLOWABLE PAVEMENT MARKERS YELLOW/YELLOW EA	
7CR.10411.37	Guilford	1	NC 62	FROM SR 3343 (COBLE CHURCH ROAD) TO ALAMANCE COUNTY LINE	3.556	21	65,170	59,953	288	60					450	
				BRIDGE #151	0.008	22							60			
					2.608	21										
		2	NC 61	FROM SR 2735 (SOCKWELL ROAD) TO NC 150	0.286	24	46,850	35,318	192						350	
				BRIDGE #195	0.048	24							60			
					4.083	24										
					0.019	24-37										
<b>TOTAL FOR PROJ NO. 7CR.10411.37</b>							<b>112,020</b>	<b>95,271</b>	<b>480</b>	<b>60</b>		<b>120</b>		<b>800</b>		
7CR.20411.37	Guilford	3	SR 2989 (DEERMONT ROAD)	FROM NC 61 TO SR 4719 (LAUREL POINT DRIVE)	0.487	20										
		4	SR 4768 (BUCK SPRINGS TRAIL)	FROM SR 4719 (LAUREL POINT DRIVE) TO SR 2989 (DEERMONT ROAD)	0.211	20										
		5	SR 4719 (LAUREL POINT DRIVE)	FROM END OF MAINTENANCE TO CUL-DE-SAC	0.754	20										
		6	SR 4720 (WALNUT RIDGE ROAD)	FROM SR 4719 (LAUREL POINT DRIVE) TO END OF MAINTENANCE	0.1	20										
		7	SR 4721 (ROUND STONE COURT)	FROM SR 4719 (LAUREL POINT DRIVE) TO CUL-DE-SAC	0.065	20										
		8	SR 3000 (MCCONNELL ROAD)	FROM SR 3045 (MT. HOPE CHURCH ROAD) TO SR 3056 (ROCK CREEK DAIRY ROAD)	1.41	20	150		22		52,280	50,548		200		
					0.388	20										
					0.038	20-22										
					0.653	22										
<b>TOTAL FOR PROJ NO. 7CR.20411.37</b>							<b>4.106</b>	<b>150</b>	<b>22</b>		<b>52,280</b>	<b>50,548</b>	<b>200</b>	<b>200</b>		
<b>GRAND TOTAL</b>							<b>14.714</b>	<b>112,170</b>	<b>95,271</b>	<b>502</b>	<b>60</b>	<b>52,280</b>	<b>50,548</b>	<b>120</b>	<b>200</b>	<b>800</b>

