


**STATE OF NORTH CAROLINA  
DEPARTMENT OF TRANSPORTATION**

PROJ. REFERENCE NO. U-5204	SHEET NO. PMP-1
APPROVED: <i>Dean Hatfield</i> DATE: 10-26-11	
	

# PAVEMENT MARKING PLANS

**LOCATION: FROM NEW FARM ROAD (SR 1764)  
TO GRACE CHAPEL ROAD (SR 1751)**

## ROADWAY STANDARD DRAWINGS

THE FOLLOWING ROADWAY STANDARDS AS APPEAR IN "ROADWAY STANDARD DRAWINGS"- ROADWAY DESIGN UNIT-N.C. DEPARTMENT OF TRANSPORTATION-RALEIGH, N.C., DATED JULY 2006 ARE APPLICABLE TO THIS PROJECT AND BY REFERENCE HEREBY ARE CONSIDERED A PART OF THESE PLANS:

STD. NO.	TITLE
1205.01	PAVEMENT MARKINGS - LINE TYPES & OFFSETS
1205.02	PAVEMENT MARKINGS - 2 LANE & MULTILANE ROADWAYS
1205.04	PAVEMENT MARKINGS - INTERSECTIONS
1205.05	PAVEMENT MARKINGS - TURN LANES
1205.06	PAVEMENT MARKINGS - THRU LANE DROPS
1205.08	PAVEMENT MARKINGS - SYMBOLS & WORD MESSAGES
1205.09	PAVEMENT MARKINGS - PAINTED ISLANDS
1250.01	PAVEMENT MARKER SPACING
1253.01	SNOWPLOWABLE RAISED PAVEMENT MARKERS

## GENERAL NOTES

THE FOLLOWING NOTES APPLY AT ALL TIMES FOR THE DURATION OF THE CONSTRUCTION PROJECT, EXCEPT WHEN NOTED IN THE PLAN, OR DIRECTED BY THE ENGINEER.

A) INSTALL PAVEMENT MARKINGS AND PAVEMENT MARKERS ON THE FINAL SURFACE AS FOLLOWS:

ASPHALT PAVEMENT DESIGN:

ROAD NAME	MARKING	MARKER
ALL	THERMOPLASTIC	SNOWPLOWABLE
BRIDGE	COLD APPLIED PLASTIC	SNOWPLOWABLE

CONCRETE ALT. PAVEMENT DESIGN:

ROAD NAME	MARKING	MARKER
ALL	POLYUREA	SNOWPLOWABLE
BRIDGE	COLD APPLIED PLASTIC	SNOWPLOWABLE

- B) TIE PROPOSED PAVEMENT MARKING LINES TO EXISTING PAVEMENT MARKING LINES.  
 C) REMOVE/ REPLACE ANY CONFLICTING/ DAMAGED PAVEMENT MARKINGS AND MARKERS.  
 D) STOPBAR LOCATION AT NON-SIGNALIZED INTERSECTIONS MAY BE ADJUSTED AS DIRECTED BY THE ENGINEER.

## PAVEMENT MARKING SCHEDULE

ASPHALT PAVEMENT DESIGN (AS SHOWN)	CONCRETE ALTERNATIVE (SUBSTITUTE)
<p><b>PAVEMENT MARKING LINES</b></p> <p>TA - THERMO - WHITE EDGELINE (4")                      TB - THERMO - YELLOW EDGELINE (4")                      TC - THERMO - 10 FT WHITE SKIP (4")                      TD - THERMO - 2 FT WHITE MINISKIP (4")                      TE - THERMO - WHITE SOLID LANE LINE (4")                      TF - THERMO - 10 FT YELLOW SKIP (4")                      TH - THERMO - YELLOW SINGLE CENTER LINE (4")                      TI - THERMO - YELLOW DOUBLE CENTER LINE (4")                      TT - THERMO - YELLOW DIAGONAL LINE (8")                      T2 - THERMO - WHITE STOP BAR (24")</p> <p><b>PAVEMENT MARKING SYMBOLS</b></p> <p>UA - THERMO - LEFT TURN ARROW                      UB - THERMO - RIGHT TURN ARROW                      UC - THERMO - STRAIGHT ARROW                      UE - THERMO - COMBO STRAIGHT/RIGHT</p> <p><b>COLD APPLIED PLASTIC (BRIDGES ONLY)</b></p> <p>CA - POLYUREA - WHITE EDGELINE (4")                      CI - POLYUREA - YELLOW DOUBLE CENTER LINE (4")                      CV - POLYUREA - YELLOW DIAGONAL LINE (8")</p>	<p>SEE SHEET 2D FOR LOCATION OF ALTERNATIVE PAVEMENT DESIGN</p> <p><b>PAVEMENT MARKING LINES</b></p> <p>VA - POLYUREA - WHITE EDGELINE (4")                      VB - POLYUREA - YELLOW EDGELINE (4")                      VC - POLYUREA - 10 FT WHITE SKIP (4")                      VD - POLYUREA - 2 FT WHITE MINISKIP (4")                      VE - POLYUREA - WHITE SOLID LANE LINE (4")                      VF - POLYUREA - 10 FT YELLOW SKIP (4")                      VH - POLYUREA - YELLOW SINGLE CENTER LINE (4")                      VI - POLYUREA - YELLOW DOUBLE CENTER LINE (4")                      VT - POLYUREA - YELLOW DIAGONAL LINE (8")                      V2 - POLYUREA - WHITE STOP BAR (24")</p> <p><b>PAVEMENT MARKING SYMBOLS</b></p> <p>WA - POLYUREA - LEFT TURN ARROW                      WB - POLYUREA - RIGHT TURN ARROW                      WC - POLYUREA - STRAIGHT ARROW</p> <p><b>COLD APPLIED PLASTIC (BRIDGES ONLY)</b></p> <p>CA - POLYUREA - WHITE EDGELINE (4")                      CI - POLYUREA - YELLOW DOUBLE CENTER LINE (4")                      CV - POLYUREA - YELLOW DIAGONAL LINE (8")</p>

## INDEX

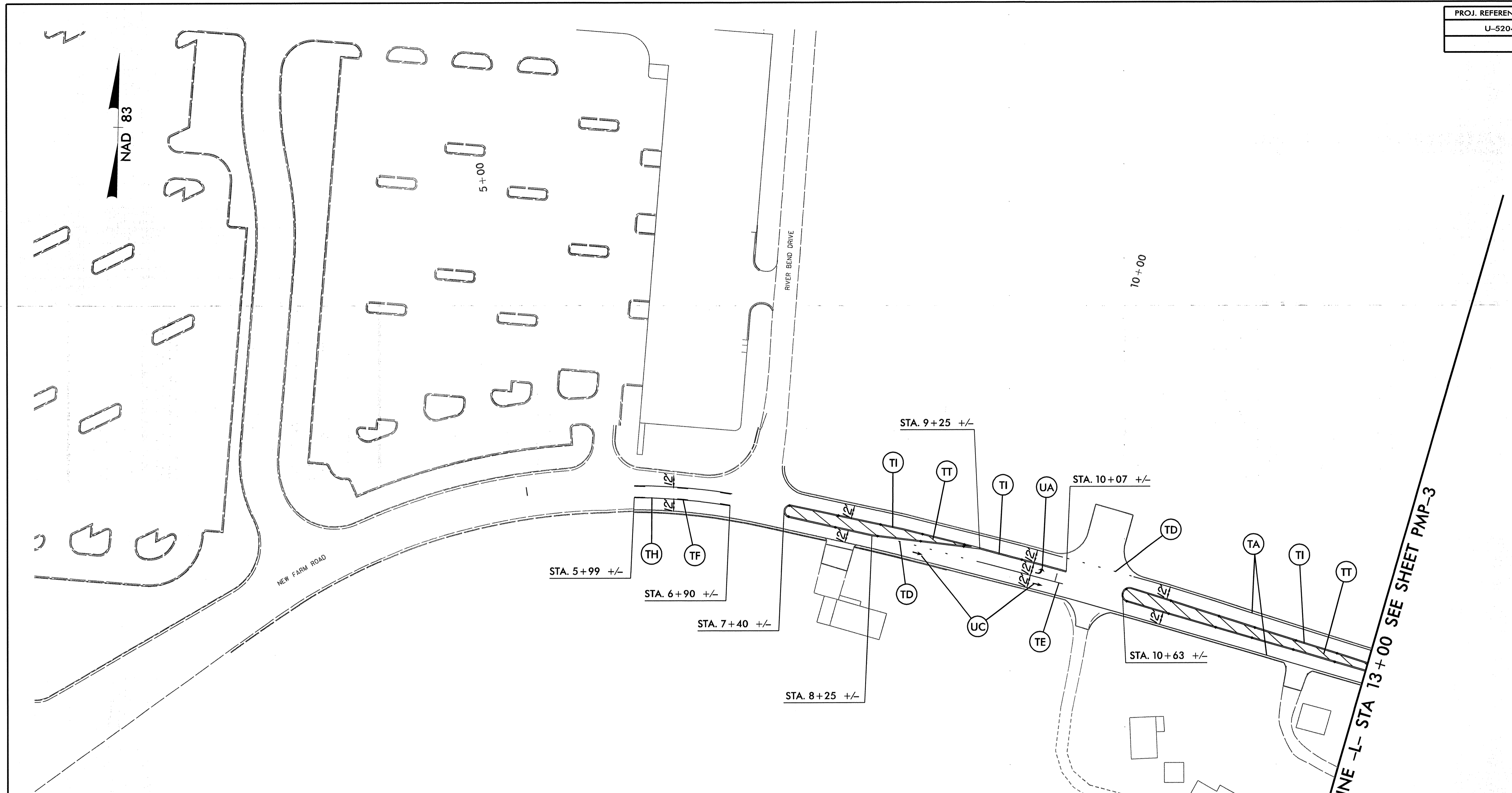
SHEET NO.	DESCRIPTION
PMP-1	PAVEMENT MARKING PLAN COVER SHEET
PMP-2-9	PAVEMENT MARKING DETAIL

## PAVEMENT MARKING SYMBOLS

 SNOW PLOWABLE PAVEMENT MARKER  
 YELLOW/YELLOW

**TIP PROJECT: U-5204**

**CONTRACT: C202565**



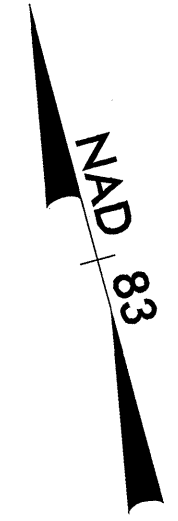
ASPHALT PAVEMENT DESIGN (AS SHOWN)	
PAVEMENT MARKING LINES	
TA - THERMO - WHITE EDGELINE (4")	
TB - THERMO - YELLOW EDGELINE (4")	
TC - THERMO - 10 FT WHITE SKIP (4")	
TD - THERMO - 2 FT WHITE MINISKIP (4")	
TE - THERMO - WHITE SOLID LANE LINE (4")	
TF - THERMO - 10 FT YELLOW SKIP (4")	
TH - THERMO - YELLOW SINGLE CENTER LINE (4")	
TI - THERMO - YELLOW DOUBLE CENTER LINE (4")	
TT - THERMO - YELLOW DIAGONAL LINE (8")	
T2 - THERMO - WHITE STOP BAR (24")	
PAVEMENT MARKING SYMBOLS	
UA - THERMO - LEFT TURN ARROW	
UB - THERMO - RIGHT TURN ARROW	
UC - THERMO - STRAIGHT ARROW	
UE - THERMO - COMBO STRAIGHT/RIGHT	
COLD APPLIED PLASTIC (BRIDGES ONLY)	
CA - POLYUREA - WHITE EDGELINE (4")	
CI - POLYUREA - YELLOW DOUBLE CENTER LINE (4")	
CV - POLYUREA - YELLOW DIAGONAL LINE (8")	

CONCRETE ALTERNATIVE (SUBSTITUTE)	
SEE SHEET 2D FOR LOCATION OF ALTERNATIVE PAVEMENT DESIGN	
PAVEMENT MARKING LINES	
VA - POLYUREA - WHITE EDGELINE (4")	
VB - POLYUREA - YELLOW EDGELINE (4")	
VC - POLYUREA - 10 FT WHITE SKIP (4")	
VD - POLYUREA - 2 FT WHITE MINISKIP (4")	
VE - POLYUREA - WHITE SOLID LANE LINE (4")	
VF - POLYUREA - 10 FT YELLOW SKIP (4")	
VH - POLYUREA - YELLOW SINGLE CENTER LINE (4")	
VI - POLYUREA - YELLOW DOUBLE CENTER LINE (4")	
VT - POLYUREA - YELLOW DIAGONAL LINE (8")	
V2 - POLYUREA - WHITE STOP BAR (24")	
PAVEMENT MARKING SYMBOLS	
WA - POLYUREA - LEFT TURN ARROW	
WB - POLYUREA - RIGHT TURN ARROW	
WC - POLYUREA - STRAIGHT ARROW	
COLD APPLIED PLASTIC (BRIDGES ONLY)	
CA - POLYUREA - WHITE EDGELINE (4")	
CI - POLYUREA - YELLOW DOUBLE CENTER LINE (4")	
CV - POLYUREA - YELLOW DIAGONAL LINE (8")	

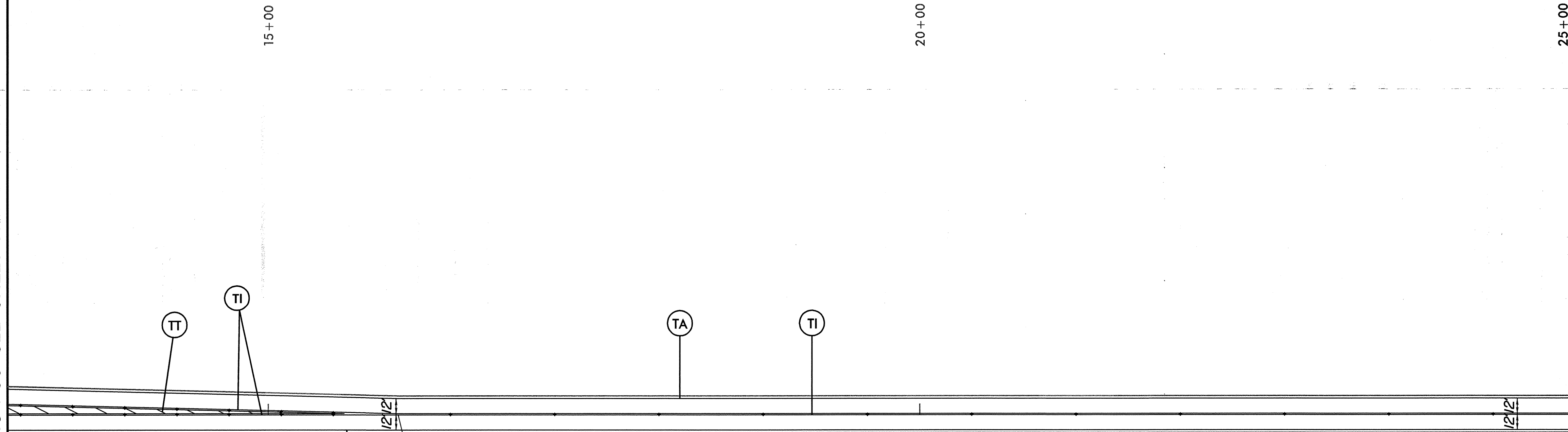
MATCHLINE -L- STA 13+00 SEE SHEET PMP-3

APPROVED: <i>D. Hatfield</i> DATE: 10-26-11		SCALE: NONE		REVISIONS
		DATE: 07/11		
	DWG. BY: C. WHITE			
	DESIGN BY: C. WHITE			
	REVIEWED BY: D. HATFIELD			

10/25/2011  
G:\OR Projects\OR1052\_US 321 Connector\Design\OR1052\_10\_RDY\_PMP\_04.dgn  
10:31:03 AM



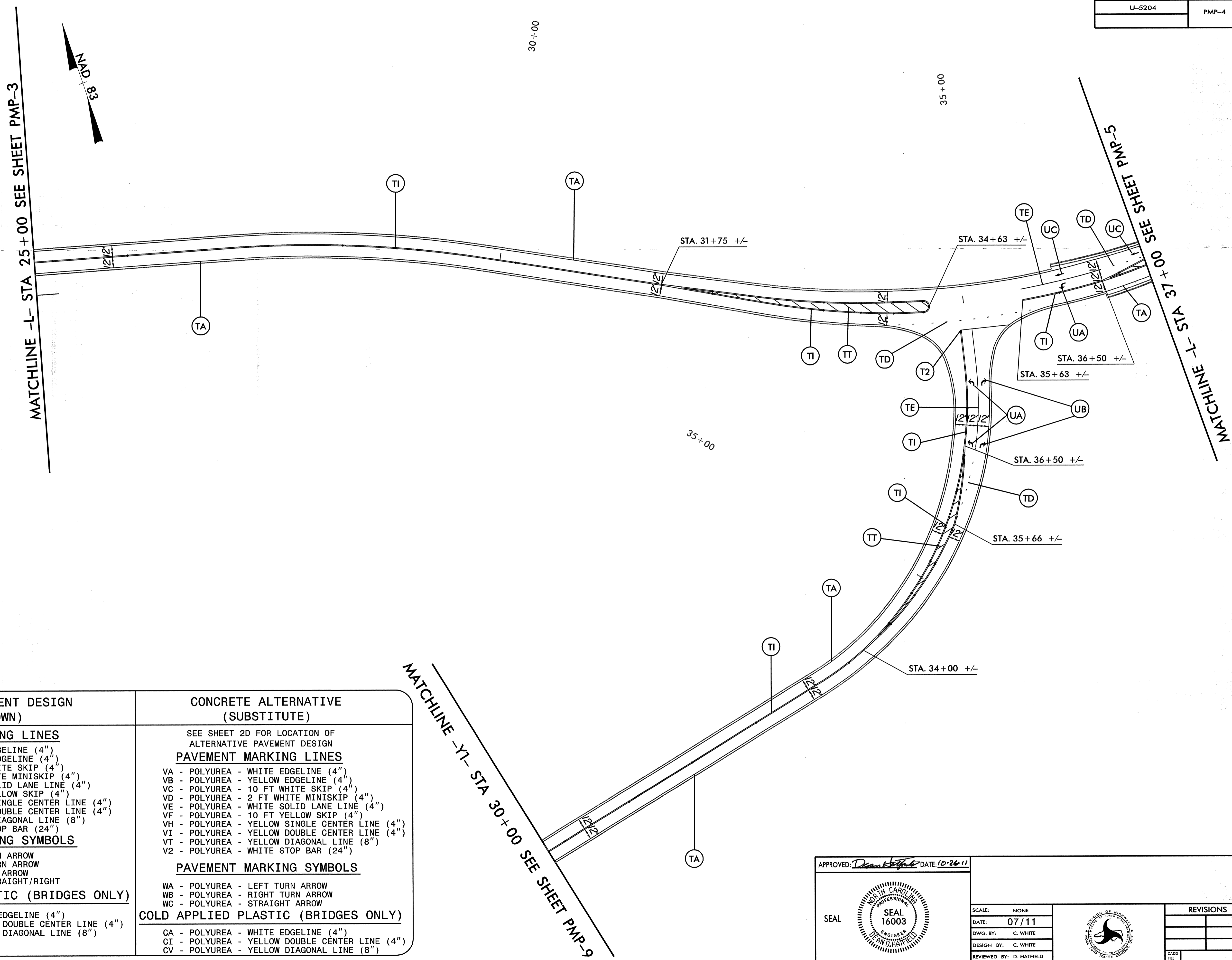
MATCHLINE -L- STA 13+00 SEE SHEET PMP-2



MATCHLINE -L- STA 25+00 SEE SHEET PMP-4

ASPHALT PAVEMENT DESIGN (AS SHOWN)	CONCRETE ALTERNATIVE (SUBSTITUTE)
<p><b>PAVEMENT MARKING LINES</b></p> <ul style="list-style-type: none"> <li>TA - THERMO - WHITE EDGELINE (4")</li> <li>TB - THERMO - YELLOW EDGELINE (4")</li> <li>TC - THERMO - 10 FT WHITE SKIP (4")</li> <li>TD - THERMO - 2 FT WHITE MINISKIP (4")</li> <li>TE - THERMO - WHITE SOLID LANE LINE (4")</li> <li>TF - THERMO - 10 FT YELLOW SKIP (4")</li> <li>TH - THERMO - YELLOW SINGLE CENTER LINE (4")</li> <li>TI - THERMO - YELLOW DOUBLE CENTER LINE (4")</li> <li>TT - THERMO - YELLOW DIAGONAL LINE (8")</li> <li>T2 - THERMO - WHITE STOP BAR (24")</li> </ul> <p><b>PAVEMENT MARKING SYMBOLS</b></p> <ul style="list-style-type: none"> <li>UA - THERMO - LEFT TURN ARROW</li> <li>UB - THERMO - RIGHT TURN ARROW</li> <li>UC - THERMO - STRAIGHT ARROW</li> <li>UE - THERMO - COMBO STRAIGHT/RIGHT</li> </ul> <p><b>COLD APPLIED PLASTIC (BRIDGES ONLY)</b></p> <ul style="list-style-type: none"> <li>CA - POLYUREA - WHITE EDGELINE (4")</li> <li>CI - POLYUREA - YELLOW DOUBLE CENTER LINE (4")</li> <li>CV - POLYUREA - YELLOW DIAGONAL LINE (8")</li> </ul>	<p>SEE SHEET 2D FOR LOCATION OF ALTERNATIVE PAVEMENT DESIGN</p> <p><b>PAVEMENT MARKING LINES</b></p> <ul style="list-style-type: none"> <li>VA - POLYUREA - WHITE EDGELINE (4")</li> <li>VB - POLYUREA - YELLOW EDGELINE (4")</li> <li>VC - POLYUREA - 10 FT WHITE SKIP (4")</li> <li>VD - POLYUREA - 2 FT WHITE MINISKIP (4")</li> <li>VE - POLYUREA - WHITE SOLID LANE LINE (4")</li> <li>VF - POLYUREA - 10 FT YELLOW SKIP (4")</li> <li>VH - POLYUREA - YELLOW SINGLE CENTER LINE (4")</li> <li>VI - POLYUREA - YELLOW DOUBLE CENTER LINE (4")</li> <li>VT - POLYUREA - YELLOW DIAGONAL LINE (8")</li> <li>V2 - POLYUREA - WHITE STOP BAR (24")</li> </ul> <p><b>PAVEMENT MARKING SYMBOLS</b></p> <ul style="list-style-type: none"> <li>WA - POLYUREA - LEFT TURN ARROW</li> <li>WB - POLYUREA - RIGHT TURN ARROW</li> <li>WC - POLYUREA - STRAIGHT ARROW</li> </ul> <p><b>COLD APPLIED PLASTIC (BRIDGES ONLY)</b></p> <ul style="list-style-type: none"> <li>CA - POLYUREA - WHITE EDGELINE (4")</li> <li>CI - POLYUREA - YELLOW DOUBLE CENTER LINE (4")</li> <li>CV - POLYUREA - YELLOW DIAGONAL LINE (8")</li> </ul>

APPROVED:  DATE: 10-26-11	<table border="1"> <tr> <td>SCALE: NONE</td> <td rowspan="4" style="text-align: center;"> </td> <td rowspan="4" style="text-align: center;"> </td> <td>REVISIONS</td> </tr> <tr> <td>DATE: 07/11</td> <td></td> </tr> <tr> <td>DWG. BY: C. WHITE</td> <td></td> </tr> <tr> <td>DESIGN BY: C. WHITE</td> <td></td> </tr> <tr> <td>REVIEWED BY: D. HATFIELD</td> <td></td> <td></td> <td></td> </tr> </table>		SCALE: NONE			REVISIONS	DATE: 07/11		DWG. BY: C. WHITE		DESIGN BY: C. WHITE		REVIEWED BY: D. HATFIELD			
SCALE: NONE			REVISIONS													
DATE: 07/11																
DWG. BY: C. WHITE																
DESIGN BY: C. WHITE																
REVIEWED BY: D. HATFIELD																



ASPHALT PAVEMENT DESIGN (AS SHOWN)	CONCRETE ALTERNATIVE (SUBSTITUTE)
<p><b>PAVEMENT MARKING LINES</b></p> <p>TA - THERMO - WHITE EDGELINE (4")            TB - THERMO - YELLOW EDGELINE (4")            TC - THERMO - 10 FT WHITE SKIP (4")            TD - THERMO - 2 FT WHITE MINISKIP (4")            TE - THERMO - WHITE SOLID LANE LINE (4")            TF - THERMO - 10 FT YELLOW SKIP (4")            TH - THERMO - YELLOW SINGLE CENTER LINE (4")            TI - THERMO - YELLOW DOUBLE CENTER LINE (4")            TT - THERMO - YELLOW DIAGONAL LINE (8")            T2 - THERMO - WHITE STOP BAR (24")</p> <p><b>PAVEMENT MARKING SYMBOLS</b></p> <p>UA - THERMO - LEFT TURN ARROW            UB - THERMO - RIGHT TURN ARROW            UC - THERMO - STRAIGHT ARROW            UE - THERMO - COMBO STRAIGHT/RIGHT</p> <p><b>COLD APPLIED PLASTIC (BRIDGES ONLY)</b></p> <p>CA - POLYUREA - WHITE EDGELINE (4")            CI - POLYUREA - YELLOW DOUBLE CENTER LINE (4")            CV - POLYUREA - YELLOW DIAGONAL LINE (8")</p>	<p>SEE SHEET 2D FOR LOCATION OF ALTERNATIVE PAVEMENT DESIGN</p> <p><b>PAVEMENT MARKING LINES</b></p> <p>VA - POLYUREA - WHITE EDGELINE (4")            VB - POLYUREA - YELLOW EDGELINE (4")            VC - POLYUREA - 10 FT WHITE SKIP (4")            VD - POLYUREA - 2 FT WHITE MINISKIP (4")            VE - POLYUREA - WHITE SOLID LANE LINE (4")            VF - POLYUREA - 10 FT YELLOW SKIP (4")            VH - POLYUREA - YELLOW SINGLE CENTER LINE (4")            VI - POLYUREA - YELLOW DOUBLE CENTER LINE (4")            VT - POLYUREA - YELLOW DIAGONAL LINE (8")            V2 - POLYUREA - WHITE STOP BAR (24")</p> <p><b>PAVEMENT MARKING SYMBOLS</b></p> <p>WA - POLYUREA - LEFT TURN ARROW            WB - POLYUREA - RIGHT TURN ARROW            WC - POLYUREA - STRAIGHT ARROW</p> <p><b>COLD APPLIED PLASTIC (BRIDGES ONLY)</b></p> <p>CA - POLYUREA - WHITE EDGELINE (4")            CI - POLYUREA - YELLOW DOUBLE CENTER LINE (4")            CV - POLYUREA - YELLOW DIAGONAL LINE (8")</p>

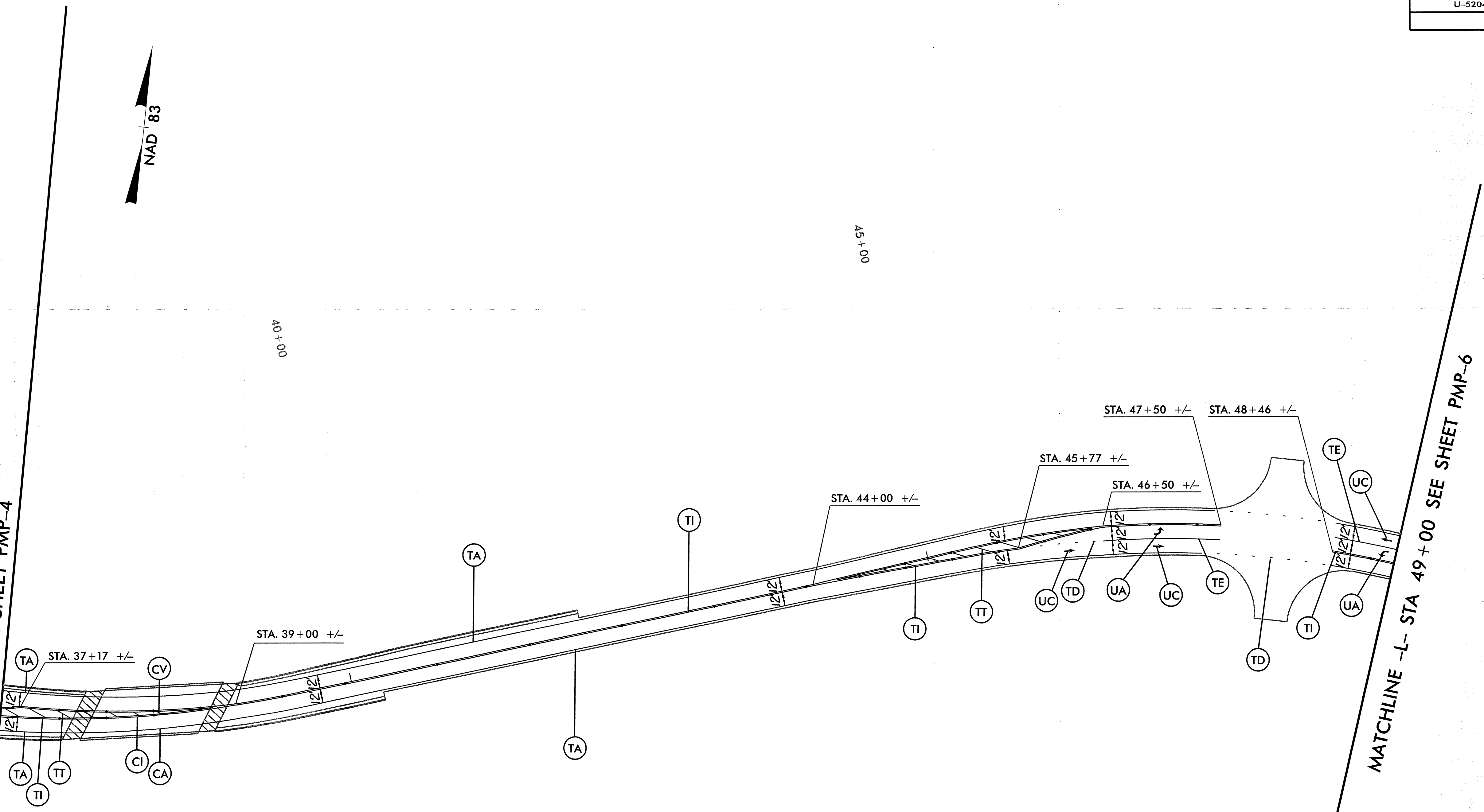
APPROVED: *D. Hatfield* DATE: 10-26-11

SCALE: NONE		REVISIONS	
DATE: 07/11			
DWG. BY: C. WHITE			
DESIGN BY: C. WHITE			
REVIEWED BY: D. HATFIELD			

10/25/2011  
 C:\OR\Projects\OR1052\_US\_321\_Connector\Design\OR1052\_10\_RDY\_PMP\_06.dgn  
 02:31:11 AM

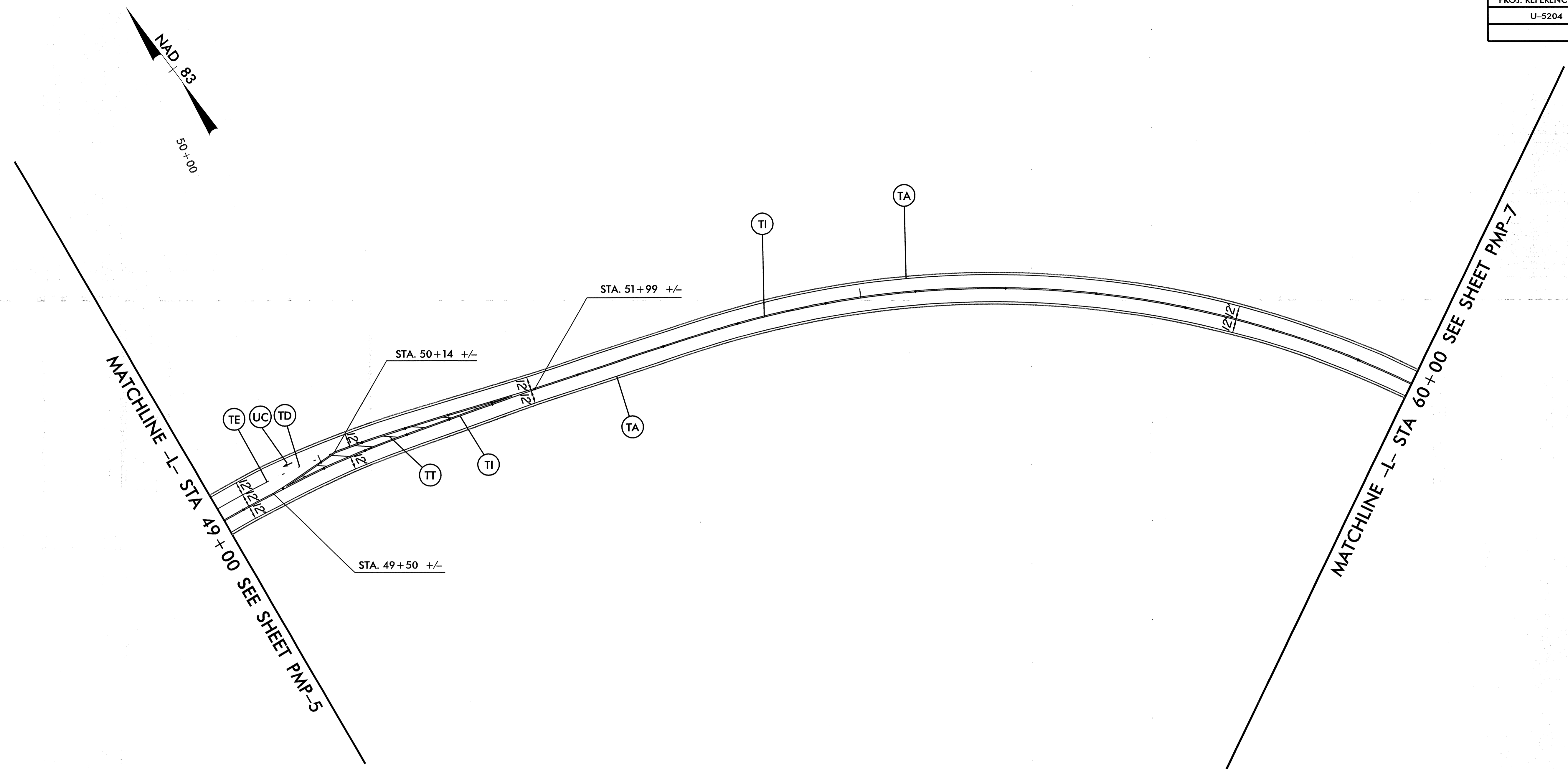
MATCHLINE -L- STA 37+00 SEE SHEET PMP-4

MATCHLINE -L- STA 49+00 SEE SHEET PMP-6



ASPHALT PAVEMENT DESIGN (AS SHOWN)	CONCRETE ALTERNATIVE (SUBSTITUTE)
<p><b>PAVEMENT MARKING LINES</b></p> <p>TA - THERMO - WHITE EDGELINE (4")</p> <p>TB - THERMO - YELLOW EDGELINE (4")</p> <p>TC - THERMO - 10 FT WHITE SKIP (4")</p> <p>TD - THERMO - 2 FT WHITE MINISKIP (4")</p> <p>TE - THERMO - WHITE SOLID LANE LINE (4")</p> <p>TF - THERMO - 10 FT YELLOW SKIP (4")</p> <p>TH - THERMO - YELLOW SINGLE CENTER LINE (4")</p> <p>TI - THERMO - YELLOW DOUBLE CENTER LINE (4")</p> <p>TT - THERMO - YELLOW DIAGONAL LINE (8")</p> <p>T2 - THERMO - WHITE STOP BAR (24")</p> <p><b>PAVEMENT MARKING SYMBOLS</b></p> <p>UA - THERMO - LEFT TURN ARROW</p> <p>UB - THERMO - RIGHT TURN ARROW</p> <p>UC - THERMO - STRAIGHT ARROW</p> <p>UE - THERMO - COMBO STRAIGHT/RIGHT</p> <p><b>COLD APPLIED PLASTIC (BRIDGES ONLY)</b></p> <p>CA - POLYUREA - WHITE EDGELINE (4")</p> <p>CI - POLYUREA - YELLOW DOUBLE CENTER LINE (4")</p> <p>CV - POLYUREA - YELLOW DIAGONAL LINE (8")</p>	<p>SEE SHEET 2D FOR LOCATION OF ALTERNATIVE PAVEMENT DESIGN</p> <p><b>PAVEMENT MARKING LINES</b></p> <p>VA - POLYUREA - WHITE EDGELINE (4")</p> <p>VB - POLYUREA - YELLOW EDGELINE (4")</p> <p>VC - POLYUREA - 10 FT WHITE SKIP (4")</p> <p>VD - POLYUREA - 2 FT WHITE MINISKIP (4")</p> <p>VE - POLYUREA - WHITE SOLID LANE LINE (4")</p> <p>VF - POLYUREA - 10 FT YELLOW SKIP (4")</p> <p>VH - POLYUREA - YELLOW SINGLE CENTER LINE (4")</p> <p>VI - POLYUREA - YELLOW DOUBLE CENTER LINE (4")</p> <p>VT - POLYUREA - YELLOW DIAGONAL LINE (8")</p> <p>V2 - POLYUREA - WHITE STOP BAR (24")</p> <p><b>PAVEMENT MARKING SYMBOLS</b></p> <p>WA - POLYUREA - LEFT TURN ARROW</p> <p>WB - POLYUREA - RIGHT TURN ARROW</p> <p>WC - POLYUREA - STRAIGHT ARROW</p> <p><b>COLD APPLIED PLASTIC (BRIDGES ONLY)</b></p> <p>CA - POLYUREA - WHITE EDGELINE (4")</p> <p>CI - POLYUREA - YELLOW DOUBLE CENTER LINE (4")</p> <p>CV - POLYUREA - YELLOW DIAGONAL LINE (8")</p>

APPROVED: <i>Dean Hatfield</i> DATE: 10-26-11		SCALE: NONE		REVISIONS
		DATE: 07/11		
	DESIGN BY: C. WHITE			
	REVIEWED BY: D. HATFIELD			



ASPHALT PAVEMENT DESIGN (AS SHOWN)	CONCRETE ALTERNATIVE (SUBSTITUTE)
<p><b>PAVEMENT MARKING LINES</b></p> <p>TA - THERMO - WHITE EDGELINE (4")            TB - THERMO - YELLOW EDGELINE (4")            TC - THERMO - 10 FT WHITE SKIP (4")            TD - THERMO - 2 FT WHITE MINISKIP (4")            TE - THERMO - WHITE SOLID LANE LINE (4")            TF - THERMO - 10 FT YELLOW SKIP (4")            TH - THERMO - YELLOW SINGLE CENTER LINE (4")            TI - THERMO - YELLOW DOUBLE CENTER LINE (4")            TT - THERMO - YELLOW DIAGONAL LINE (8")            T2 - THERMO - WHITE STOP BAR (24")</p> <p><b>PAVEMENT MARKING SYMBOLS</b></p> <p>UA - THERMO - LEFT TURN ARROW            UB - THERMO - RIGHT TURN ARROW            UC - THERMO - STRAIGHT ARROW            UE - THERMO - COMBO STRAIGHT/RIGHT</p> <p><b>COLD APPLIED PLASTIC (BRIDGES ONLY)</b></p> <p>CA - POLYUREA - WHITE EDGELINE (4")            CI - POLYUREA - YELLOW DOUBLE CENTER LINE (4")            CV - POLYUREA - YELLOW DIAGONAL LINE (8")</p>	<p>SEE SHEET 2D FOR LOCATION OF ALTERNATIVE PAVEMENT DESIGN</p> <p><b>PAVEMENT MARKING LINES</b></p> <p>VA - POLYUREA - WHITE EDGELINE (4")            VB - POLYUREA - YELLOW EDGELINE (4")            VC - POLYUREA - 10 FT WHITE SKIP (4")            VD - POLYUREA - 2 FT WHITE MINISKIP (4")            VE - POLYUREA - WHITE SOLID LANE LINE (4")            VF - POLYUREA - 10 FT YELLOW SKIP (4")            VH - POLYUREA - YELLOW SINGLE CENTER LINE (4")            VI - POLYUREA - YELLOW DOUBLE CENTER LINE (4")            VT - POLYUREA - YELLOW DIAGONAL LINE (8")            V2 - POLYUREA - WHITE STOP BAR (24")</p> <p><b>PAVEMENT MARKING SYMBOLS</b></p> <p>WA - POLYUREA - LEFT TURN ARROW            WB - POLYUREA - RIGHT TURN ARROW            WC - POLYUREA - STRAIGHT ARROW</p> <p><b>COLD APPLIED PLASTIC (BRIDGES ONLY)</b></p> <p>CA - POLYUREA - WHITE EDGELINE (4")            CI - POLYUREA - YELLOW DOUBLE CENTER LINE (4")            CV - POLYUREA - YELLOW DIAGONAL LINE (8")</p>

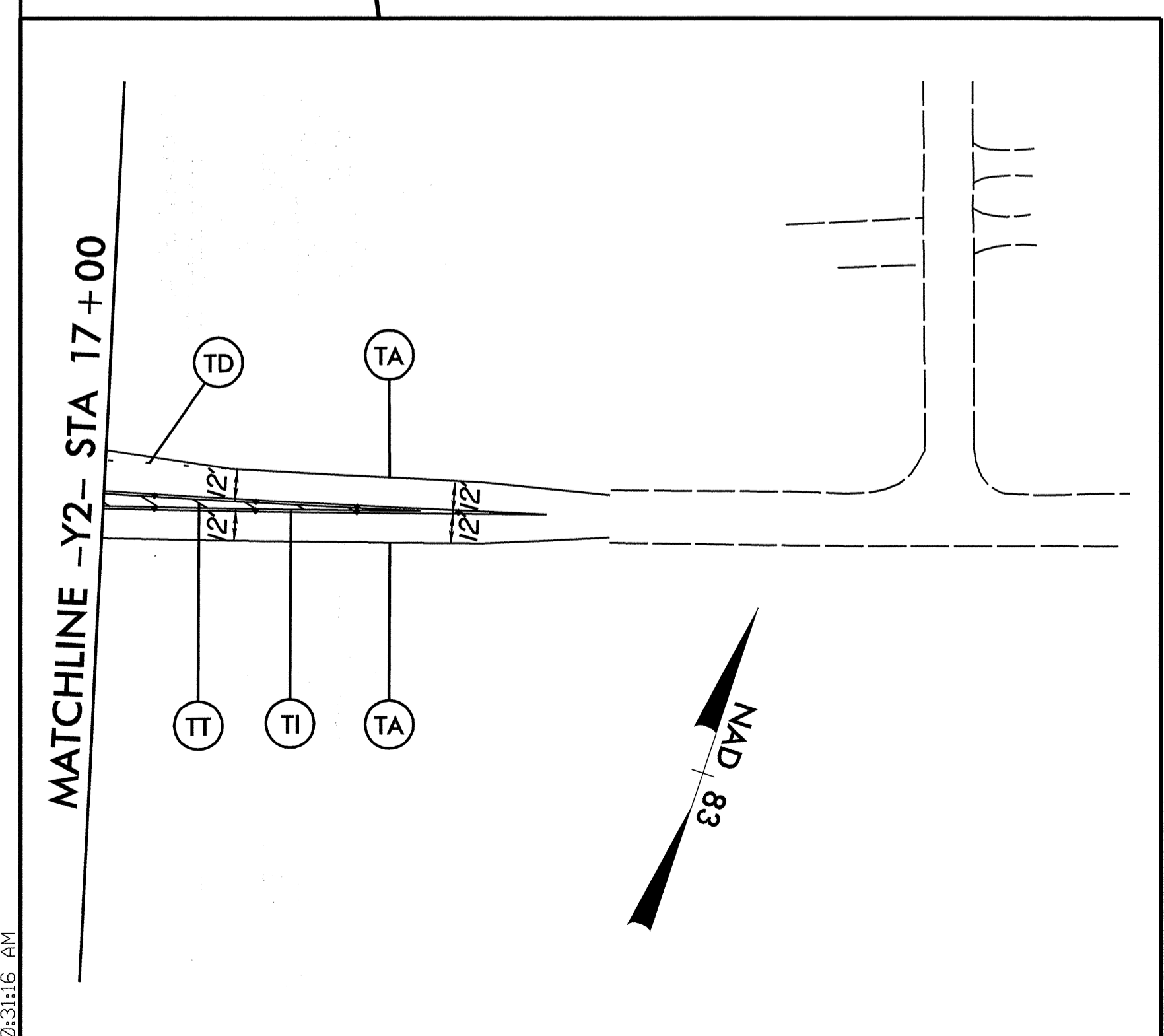
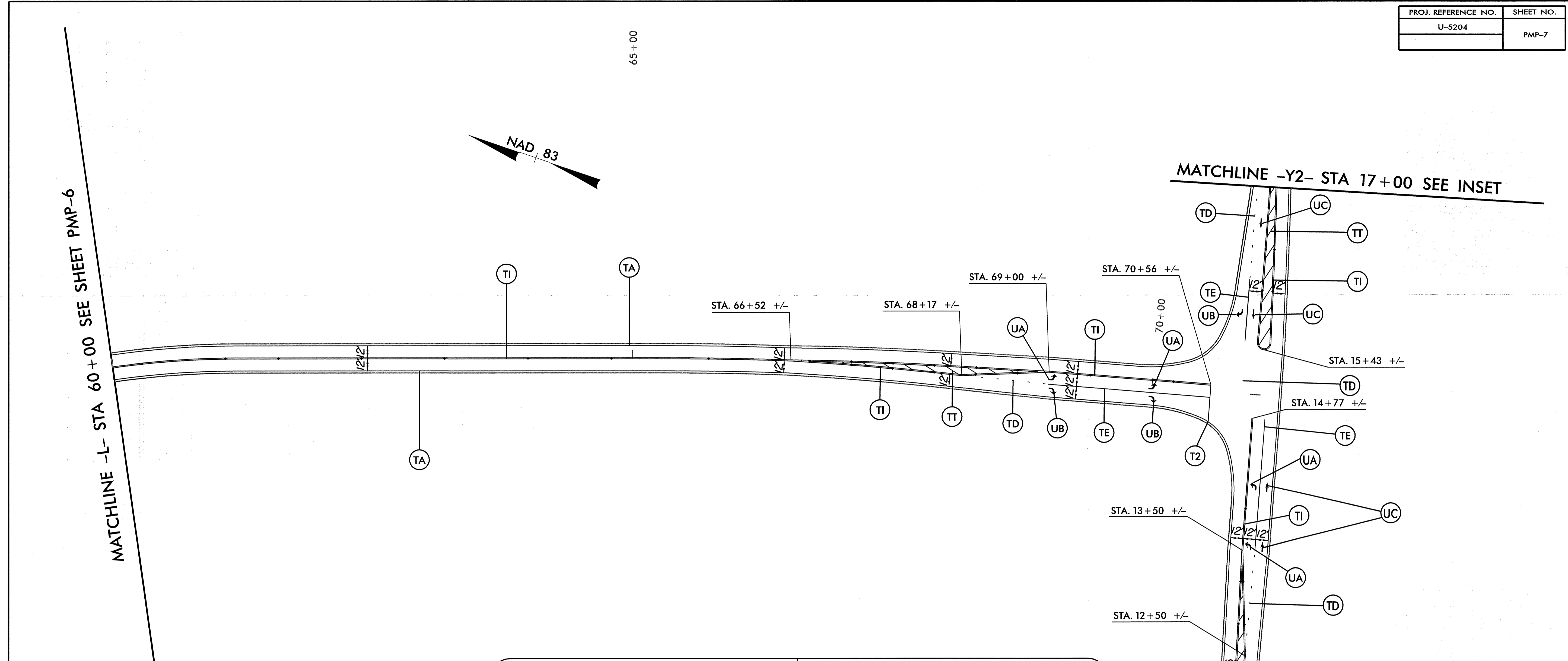
APPROVED: *D. Hatfield* DATE: 10-26-11

SEAL

SCALE:	NONE
DATE:	07/11
DWG. BY:	C. WHITE
DESIGN BY:	C. WHITE
REVIEWED BY:	D. HATFIELD

REVISIONS	

10/25/2011  
 G:\OR Projects\OR1052-US 321 Connector\Design\OR1052-10\_RDY\_PMP\_08.dgn  
 10:31:14 AM



ASPHALT PAVEMENT DESIGN (AS SHOWN)	CONCRETE ALTERNATIVE (SUBSTITUTE)
<b>PAVEMENT MARKING LINES</b> TA - THERMO - WHITE EDGELINE (4") TB - THERMO - YELLOW EDGELINE (4") TC - THERMO - 10 FT WHITE SKIP (4") TD - THERMO - 2 FT WHITE MINISKIP (4") TE - THERMO - WHITE SOLID LANE LINE (4") TF - THERMO - 10 FT YELLOW SKIP (4") TH - THERMO - YELLOW SINGLE CENTER LINE (4") TI - THERMO - YELLOW DOUBLE CENTER LINE (4") TT - THERMO - YELLOW DIAGONAL LINE (8") T2 - THERMO - WHITE STOP BAR (24")	SEE SHEET 2D FOR LOCATION OF ALTERNATIVE PAVEMENT DESIGN <b>PAVEMENT MARKING LINES</b> VA - POLYUREA - WHITE EDGELINE (4") VB - POLYUREA - YELLOW EDGELINE (4") VC - POLYUREA - 10 FT WHITE SKIP (4") VD - POLYUREA - 2 FT WHITE MINISKIP (4") VE - POLYUREA - WHITE SOLID LANE LINE (4") VF - POLYUREA - 10 FT YELLOW SKIP (4") VH - POLYUREA - YELLOW SINGLE CENTER LINE (4") VI - POLYUREA - YELLOW DOUBLE CENTER LINE (4") VT - POLYUREA - YELLOW DIAGONAL LINE (8") V2 - POLYUREA - WHITE STOP BAR (24")
<b>PAVEMENT MARKING SYMBOLS</b> UA - THERMO - LEFT TURN ARROW UB - THERMO - RIGHT TURN ARROW UC - THERMO - STRAIGHT ARROW UE - THERMO - COMBO STRAIGHT/RIGHT	<b>PAVEMENT MARKING SYMBOLS</b> WA - POLYUREA - LEFT TURN ARROW WB - POLYUREA - RIGHT TURN ARROW WC - POLYUREA - STRAIGHT ARROW
<b>COLD APPLIED PLASTIC (BRIDGES ONLY)</b> CA - POLYUREA - WHITE EDGELINE (4") CI - POLYUREA - YELLOW DOUBLE CENTER LINE (4") CV - POLYUREA - YELLOW DIAGONAL LINE (8")	<b>COLD APPLIED PLASTIC (BRIDGES ONLY)</b> CA - POLYUREA - WHITE EDGELINE (4") CI - POLYUREA - YELLOW DOUBLE CENTER LINE (4") CV - POLYUREA - YELLOW DIAGONAL LINE (8")

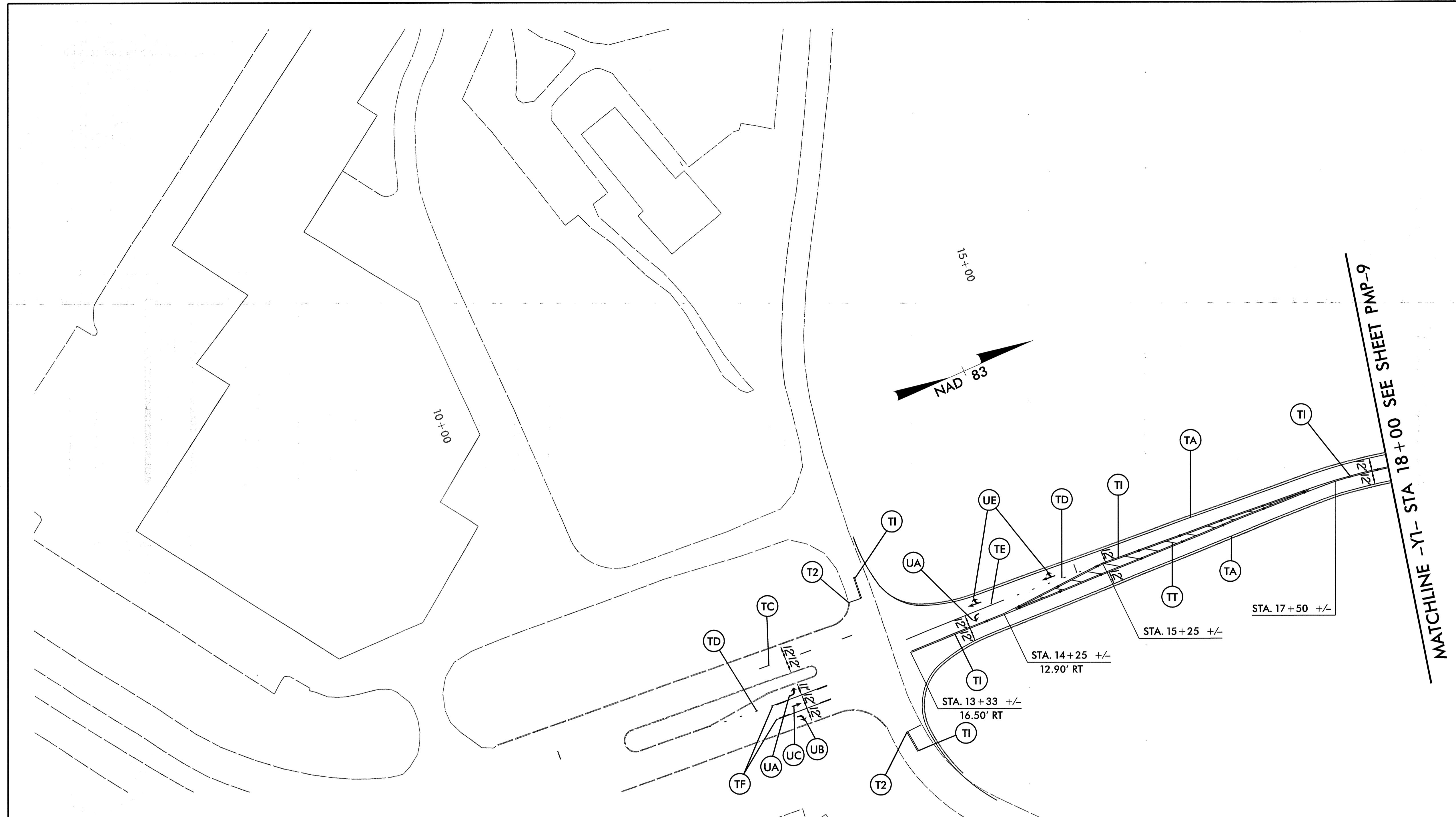
APPROVED: *D. Hatfield* DATE: 10-26-11

SCALE: NONE  
 DATE: 07/11  
 DWG. BY: C. WHITE  
 DESIGN BY: C. WHITE  
 REVIEWED BY: D. HATFIELD

SEAL:

REVISIONS

10/25/2011  
 G:\OR Projects\OR1052\_US 321 Connector\Design\OR1052\_10\_RDY\_PMP\_09.dgn  
 10:31:16 AM



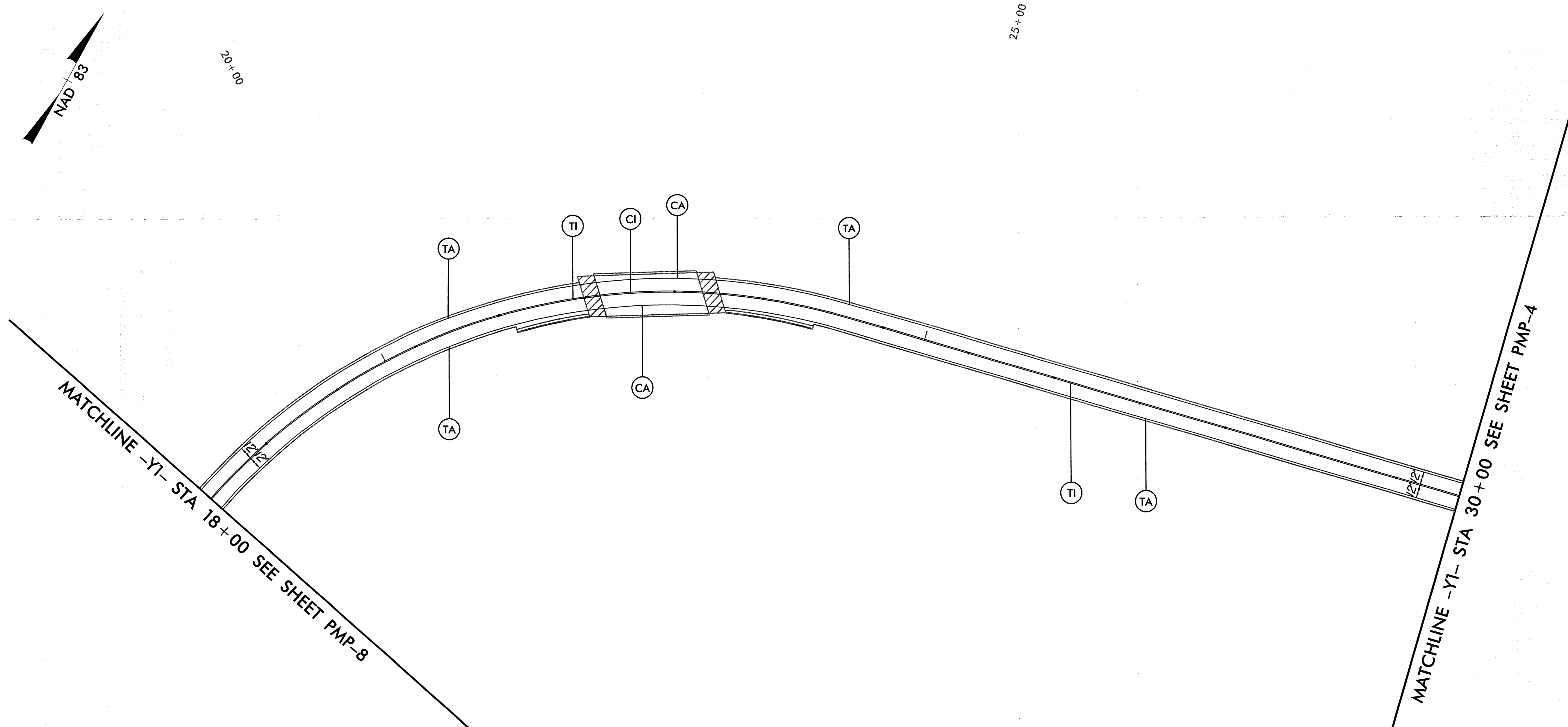
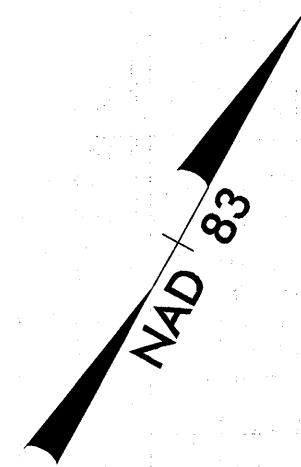
ASPHALT PAVEMENT DESIGN (AS SHOWN)	CONCRETE ALTERNATIVE (SUBSTITUTE)
<p><b>PAVEMENT MARKING LINES</b></p> <p>TA - THERMO - WHITE EDGELINE (4")            TB - THERMO - YELLOW EDGELINE (4")            TC - THERMO - 10 FT WHITE SKIP (4")            TD - THERMO - 2 FT WHITE MINISKIP (4")            TE - THERMO - WHITE SOLID LANE LINE (4")            TF - THERMO - 10 FT YELLOW SKIP (4")            TH - THERMO - YELLOW SINGLE CENTER LINE (4")            TI - THERMO - YELLOW DOUBLE CENTER LINE (4")            TT - THERMO - YELLOW DIAGONAL LINE (8")            T2 - THERMO - WHITE STOP BAR (24")</p> <p><b>PAVEMENT MARKING SYMBOLS</b></p> <p>UA - THERMO - LEFT TURN ARROW            UB - THERMO - RIGHT TURN ARROW            UC - THERMO - STRAIGHT ARROW            UE - THERMO - COMBO STRAIGHT/RIGHT</p> <p><b>COLD APPLIED PLASTIC (BRIDGES ONLY)</b></p> <p>CA - POLYUREA - WHITE EDGELINE (4")            CI - POLYUREA - YELLOW DOUBLE CENTER LINE (4")            CV - POLYUREA - YELLOW DIAGONAL LINE (8")</p>	<p>SEE SHEET 2D FOR LOCATION OF ALTERNATIVE PAVEMENT DESIGN</p> <p><b>PAVEMENT MARKING LINES</b></p> <p>VA - POLYUREA - WHITE EDGELINE (4")            VB - POLYUREA - YELLOW EDGELINE (4")            VC - POLYUREA - 10 FT WHITE SKIP (4")            VD - POLYUREA - 2 FT WHITE MINISKIP (4")            VE - POLYUREA - WHITE SOLID LANE LINE (4")            VF - POLYUREA - 10 FT YELLOW SKIP (4")            VH - POLYUREA - YELLOW SINGLE CENTER LINE (4")            VI - POLYUREA - YELLOW DOUBLE CENTER LINE (4")            VT - POLYUREA - YELLOW DIAGONAL LINE (8")            V2 - POLYUREA - WHITE STOP BAR (24")</p> <p><b>PAVEMENT MARKING SYMBOLS</b></p> <p>WA - POLYUREA - LEFT TURN ARROW            WB - POLYUREA - RIGHT TURN ARROW            WC - POLYUREA - STRAIGHT ARROW</p> <p><b>COLD APPLIED PLASTIC (BRIDGES ONLY)</b></p> <p>CA - POLYUREA - WHITE EDGELINE (4")            CI - POLYUREA - YELLOW DOUBLE CENTER LINE (4")            CV - POLYUREA - YELLOW DIAGONAL LINE (8")</p>

APPROVED: *[Signature]* DATE: 10-26-11

SCALE: NONE		<b>REVISIONS</b> <table border="1"> <tr><td> </td><td> </td></tr> <tr><td> </td><td> </td></tr> <tr><td> </td><td> </td></tr> <tr><td> </td><td> </td></tr> </table>								
DATE: 07/11										
DESIGN BY: C. WHITE										
REVIEWED BY: D. HATFIELD										

10/25/2011  
 G:\OR Projects\DR1052-US 321 Connector\Design\DR1052-10\_FRDY\_PMP-10.dgn  
 10:33:17 AM





ASPHALT PAVEMENT DESIGN (AS SHOWN)	CONCRETE ALTERNATIVE (SUBSTITUTE)
<p><b>PAVEMENT MARKING LINES</b></p> <p>TA - THERMO - WHITE EDGELINE (4")            TB - THERMO - YELLOW EDGELINE (4")            TC - THERMO - 10 FT WHITE SKIP (4")            TD - THERMO - 2 FT WHITE MINISKIP (4")            TE - THERMO - WHITE SOLID LANE LINE (4")            TF - THERMO - 10 FT YELLOW SKIP (4")            TH - THERMO - YELLOW SINGLE CENTER LINE (4")            TI - THERMO - YELLOW DOUBLE CENTER LINE (4")            TT - THERMO - YELLOW DIAGONAL LINE (8")            T2 - THERMO - WHITE STOP BAR (24")</p> <p><b>PAVEMENT MARKING SYMBOLS</b></p> <p>UA - THERMO - LEFT TURN ARROW            UB - THERMO - RIGHT TURN ARROW            UC - THERMO - STRAIGHT ARROW            UE - THERMO - COMBO STRAIGHT/RIGHT</p> <p><b>COLD APPLIED PLASTIC (BRIDGES ONLY)</b></p> <p>CA - POLYUREA - WHITE EDGELINE (4")            CI - POLYUREA - YELLOW DOUBLE CENTER LINE (4")            CV - POLYUREA - YELLOW DIAGONAL LINE (8")</p>	<p>SEE SHEET 2D FOR LOCATION OF ALTERNATIVE PAVEMENT DESIGN</p> <p><b>PAVEMENT MARKING LINES</b></p> <p>VA - POLYUREA - WHITE EDGELINE (4")            VB - POLYUREA - YELLOW EDGELINE (4")            VC - POLYUREA - 10 FT WHITE SKIP (4")            VD - POLYUREA - 2 FT WHITE MINISKIP (4")            VE - POLYUREA - WHITE SOLID LANE LINE (4")            VF - POLYUREA - 10 FT YELLOW SKIP (4")            VH - POLYUREA - YELLOW SINGLE CENTER LINE (4")            VI - POLYUREA - YELLOW DOUBLE CENTER LINE (4")            VT - POLYUREA - YELLOW DIAGONAL LINE (8")            V2 - POLYUREA - WHITE STOP BAR (24")</p> <p><b>PAVEMENT MARKING SYMBOLS</b></p> <p>WA - POLYUREA - LEFT TURN ARROW            WB - POLYUREA - RIGHT TURN ARROW            WC - POLYUREA - STRAIGHT ARROW</p> <p><b>COLD APPLIED PLASTIC (BRIDGES ONLY)</b></p> <p>CA - POLYUREA - WHITE EDGELINE (4")            CI - POLYUREA - YELLOW DOUBLE CENTER LINE (4")            CV - POLYUREA - YELLOW DIAGONAL LINE (8")</p>

APPROVED: <i>D. Hatfield</i> DATE: 10-26-11			
	SCALE: NONE		
	DATE: 07/11		REVISIONS
	DWG. BY: C. WHITE		
	DESIGN BY: C. WHITE		
	REVIEWED BY: D. HATFIELD		

10/25/2011  
 G:\DR Projects\01052.US 321 Connector\Design\01052\_10\_RDY\_PMP\_11.dgn  
 10:31:19 AM