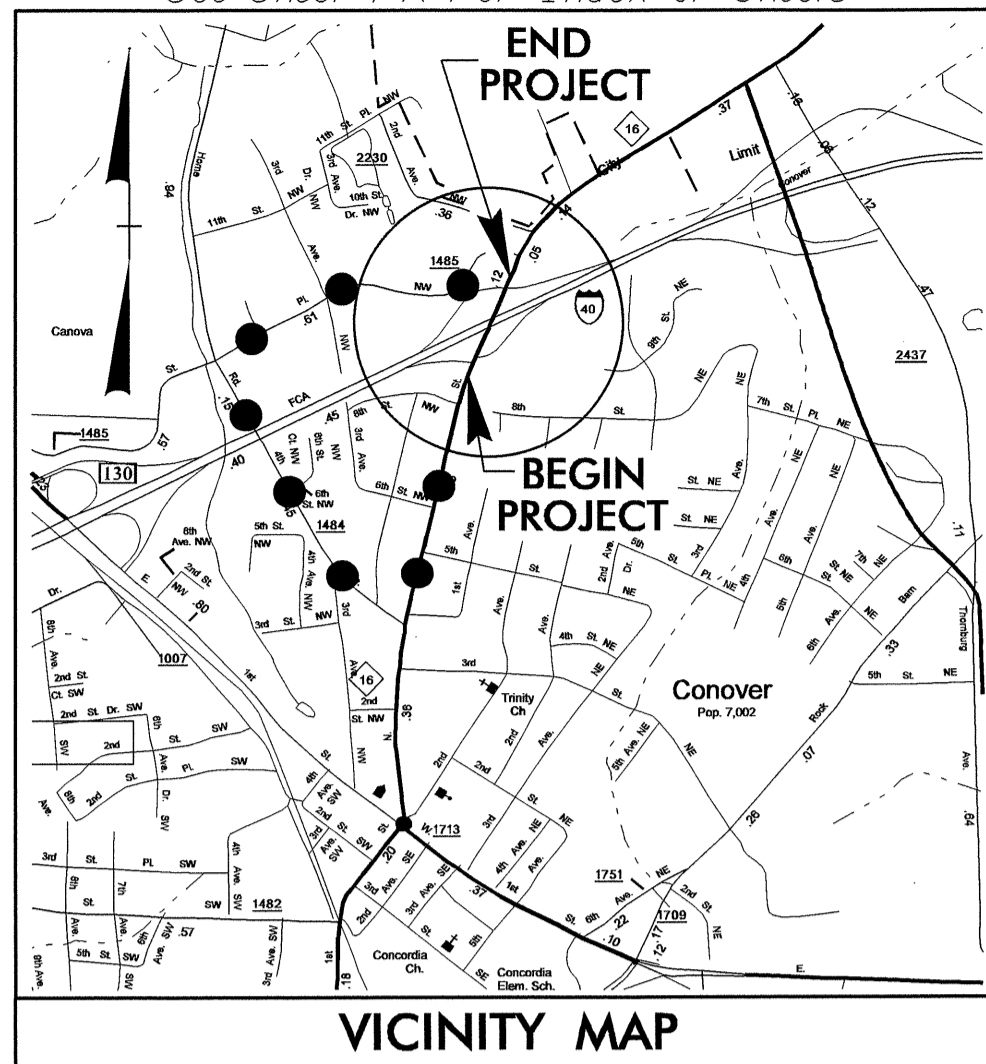


09/28/99

See Sheet 1-A For Index of Sheets



●●●● OFF-SITE DETOUR ROUTE

STATE OF NORTH CAROLINA
DIVISION OF HIGHWAYS

**UTILITIES BY OTHERS PLANS
CATAWBA COUNTY**

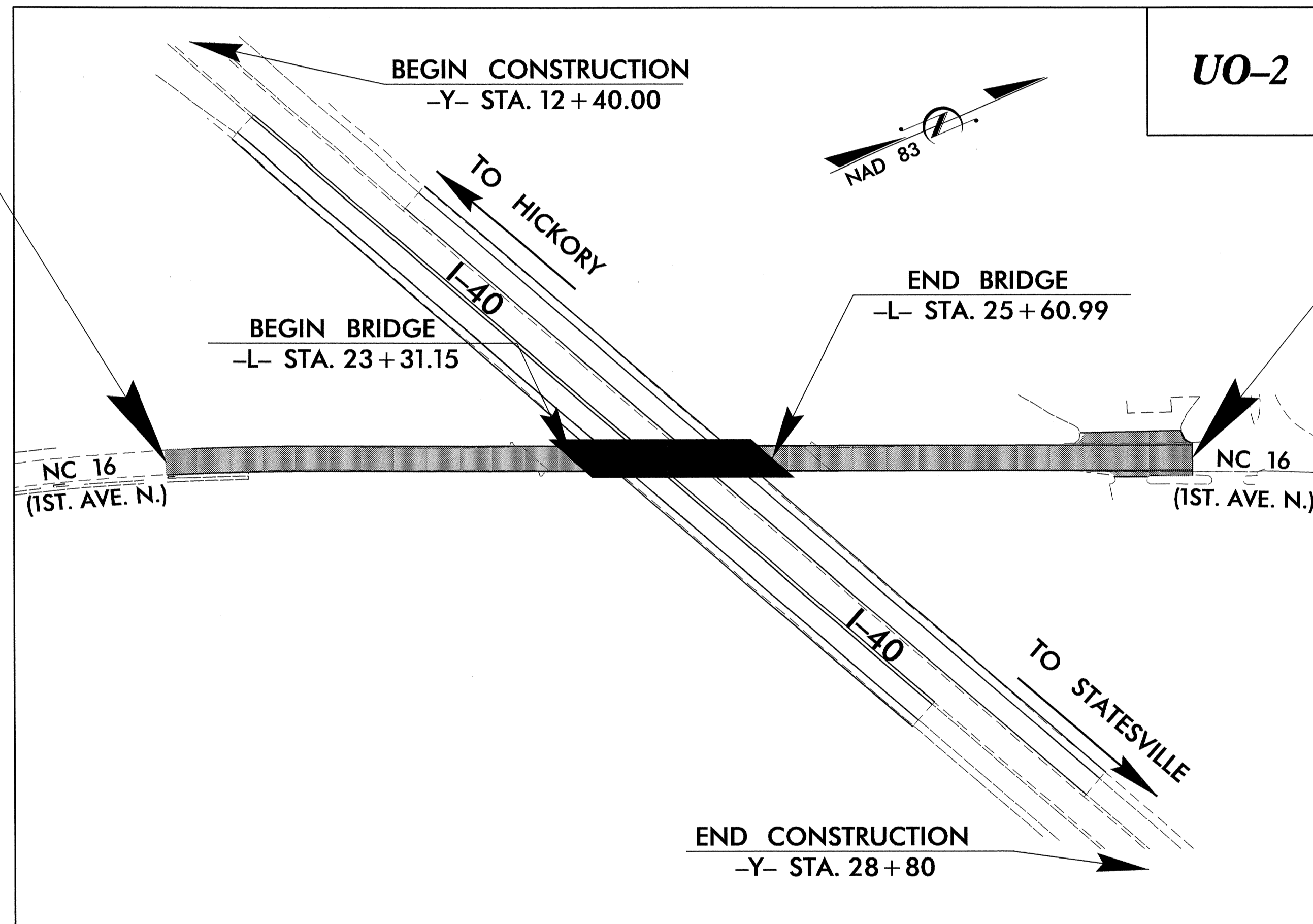
LOCATION: BRIDGE NO. 49 OVER I-40 ON NC 16
TYPE OF WORK: POWER, TELEPHONE & CATV AERIAL UTILITIES

T.I.P. NO.	SHEET NO.
B-4456	UO-1

TIP PROJECT: B-4456

BEGIN TIP PROJECT B-4456
-L- STA. 18+70

TO NEWTON
←

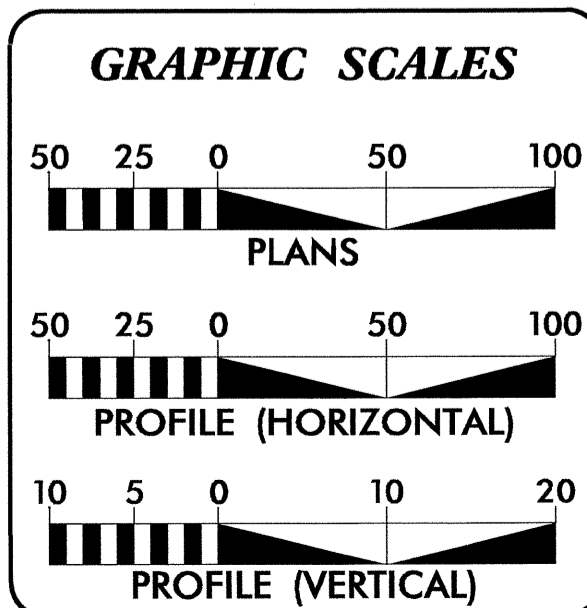


UO-2

END TIP PROJECT B-4456
-L- STA. 30+40

TO TAYLORSVILLE
→

CLEARING ON THIS PROJECT SHALL BE PERFORMED TO THE LIMITS ESTABLISHED BY METHOD III
NOTE: THIS PROJECT IS WITHIN THE MUNICIPAL BOUNDARIES OF CONOVER.



INDEX OF SHEETS

SHEET NO.	DESCRIPTION
UO-1	TITLE SHEET
UO-2	UTILITIES BY OTHERS PLAN SHEET

- UTILITY OWNERS ON PROJECT**
- (1) WATER / SEWER - CITY OF CONOVER
 - (2) TELEPHONE - AT&T NORTH CAROLINA
 - (3) POWER DISTRIBUTION - DUKE ENERGY
 - (4) CATV - CHARTER COMMUNICATIONS

PREPARED IN THE OFFICE OF:
DIVISION OF HIGHWAYS
UTILITIES ENGINEERING SECTION

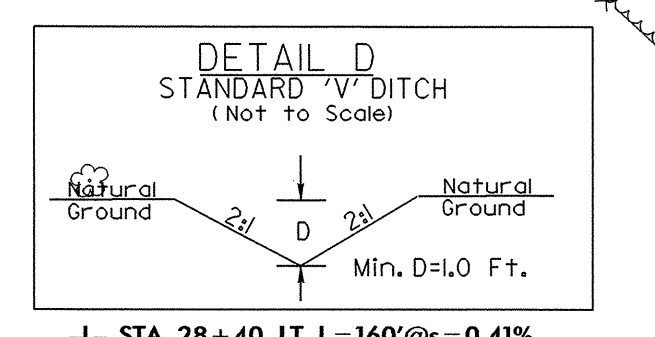
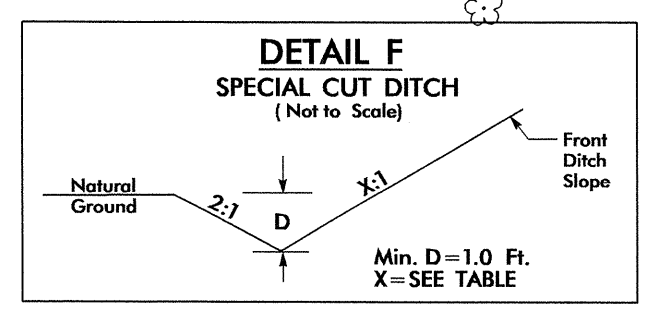
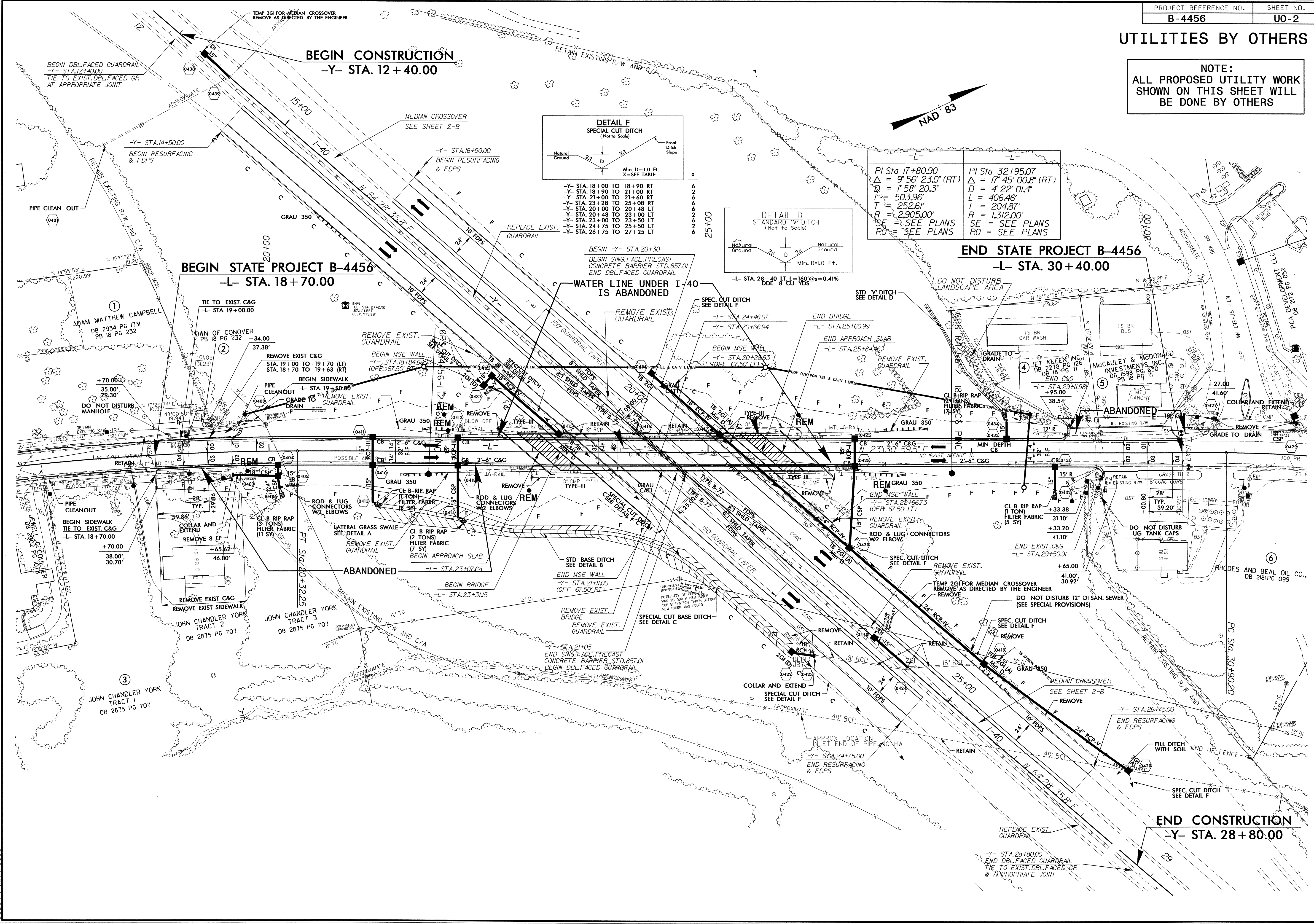
1555 MAIL SERVICES CENTER
RALEIGH NC 27699-1555
PHONE (919) 707-6690
FAX (919) 250-4151

Roger Worthington, P.E. UTILITIES SECTION ENGINEER
Carl A. Barclay, P.E. UTILITIES SQUAD LEADER PROJECT ENGINEER
James E. Swinson UTILITIES PROJECT DESIGNER

02-AUG-2011 11:55
R:\Utilities\Wgdy\UT\Proj\B4456-ut_title_uol_psh.dgn
\$\$\$\$\$USERNAME\$\$\$\$\$

UTILITIES BY OTHERS

NOTE:
 ALL PROPOSED UTILITY WORK
 SHOWN ON THIS SHEET WILL
 BE DONE BY OTHERS



PI Sta 17+80.90	PI Sta 32+95.07
$\Delta = 9'56"23.0"$ (RT)	$\Delta = 17'45"00.8"$ (RT)
$D = 1'58"20.3"$	$D = 4'22"01.4"$
$L = 503.96'$	$L = 406.46'$
$T = 252.61'$	$T = 204.87'$
$R = 2,905.00'$	$R = 1,312.00'$
SE = SEE PLANS	SE = SEE PLANS
RO = SEE PLANS	RO = SEE PLANS

02-AUG-2011 11:21 AM
 R:\projects\4456\4456_uo2\psh.dgn
 5/14/09