

A	SHOP ORDER	NO. PIECES REQUIRED	B M	STATE	PROJECT
4 1/2	9372	4	Mb9	Fla	Volusia County, Fla.
4 1/2	9570	2	Mb7	Fla	Job 7952-202-5-195(2)
4 1/2	9677	2	Mb5	Fla	Job 8803-104
4 1/2	1203	2	Mb12	Fla	Job 7925-107
4 1/2	1212	2	Mb12	Fla	Job 7917-101
4 1/2	1217	2	Mb10	Fla	Job 7915-102
4 1/2	6250	4	Mb10	Fla	Volusia Co. Proj. 5231
3	6336	2	Mb8	Ga.	BAUD 719 A(15)
4 1/2	7071	2	Mb5	Fla	Job 7911-106
1 1/2	8001	2	Mb5	Fla	Job 8521-202
4 1/2	7747	2	Mb7	Fla	Job 8609-176
4 1/2	2056	2	Mb7	Fla	Job 8613-175
4 1/2	8599	4	Mb5	Fla.	Job 9304-202
4 1/2	2664	2	Mb7	Fla	Job 8602-201
4 1/2	9069	2	Mb5	Fla	Job 1304-175
4 1/2	9483	2	Mb8	Fla	Job 8612-175
4 1/2	9985	2	Mb5	Fla.	1315-175
4 1/2	349	4	Mb.5	Fla.	8900-175
3 1/2	581	2	Mb2	N.C.	PROJ 3535
7 1/2	1153	2	Mb8	Fla	Proj. 8605-111
4 1/2	1190	2	Mb5	Fla	Proj. 1512-150
4 1/2	1443	4	Mb5	Fla.	Proj. 9304-204
4 1/2	1448	2	Mb6	N.C.	2025
4 1/2	1550	2	Mb.5	Fla.	931-175
4 1/2	2013	2	Mb.8	Fla.	1703-175
4 1/2	3173	2	Mb.5	Fla	0706-110
4 1/2	3556	2	Mb.10	Fla.	City of Tampa-Kruse St.


Hopkins Trunnion Bascule Bridge Proj 2066110

### CENTER LOCK STANDARD DRAWING

**NASHVILLE BRIDGE COMPANY**  
NASHVILLE, TENN.

NASHVILLE PLANT    BESSEMER PLANT

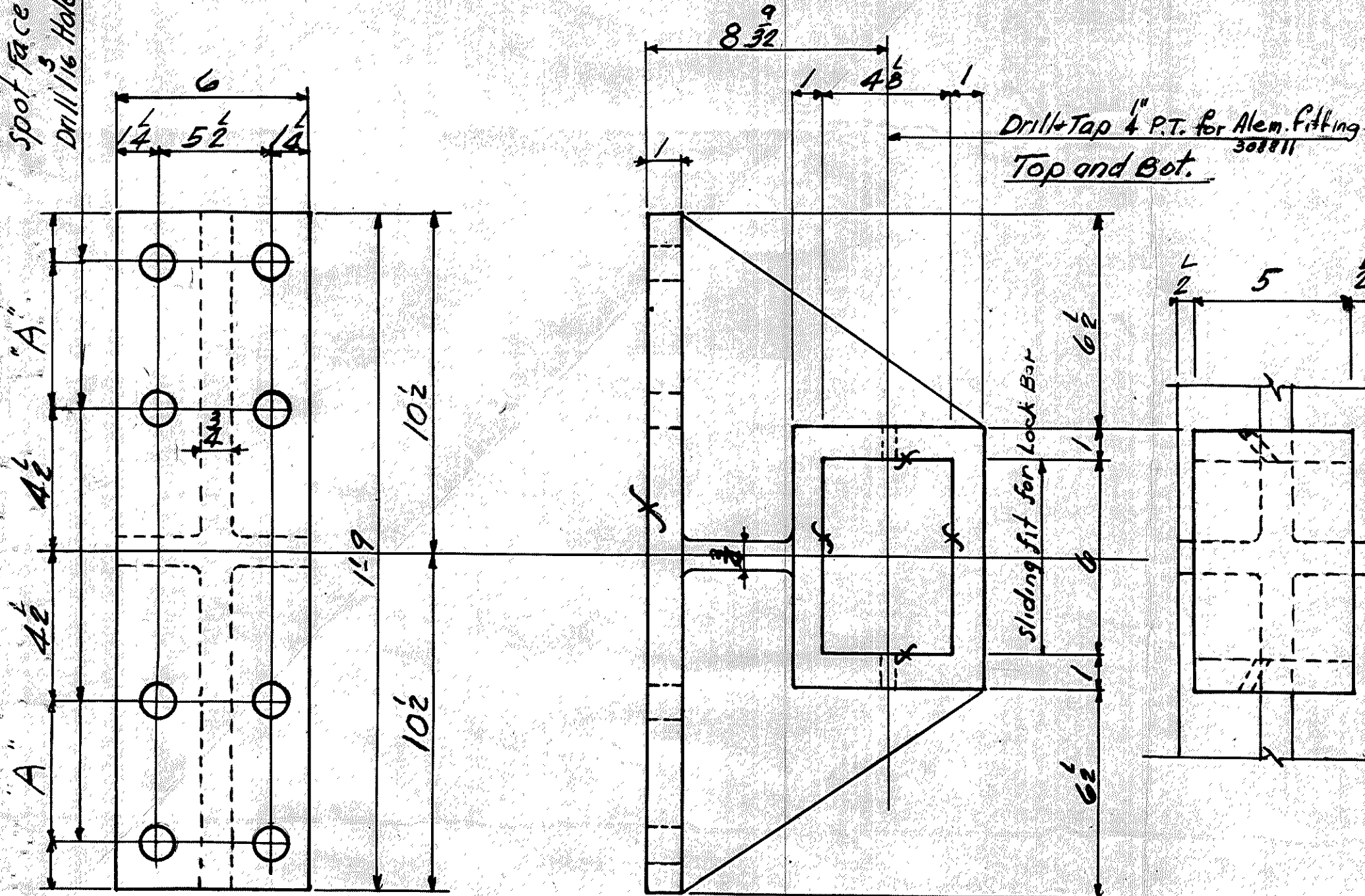
APPROVED FOR SHOP	RIVETS	OR NOTED	DRAWN BY	DATE
6/30			✓	3/22/50
CHIEF DRAFTSMAN	HOLES	OR NOTED	TRACED BY	DATE
CHIEF ENGINEER	FIELD CONN		CHECKED BY	DATE
			790	4-10-50

Center Lock - Part D74  
Material: C.S.    Weight each 146 lbs  
Spec: ASTM A27-52T Grade 65-35

Ship All Assembled as D74

APPROVED FOR SHOP

Spot face far side.  
Drill 1/16" Holes for Turn Bolt



Center Lock - Part D75  
 Material - C.S. Weight each 10.1#  
 Specif. ASTM A-27-52T Gr 65-35

"A"	SHOP ORDER	NO. PIECES REQUIRED	B M	DATE	PROJECT
1/2	9372	4	Mb-9	Fla	Job 2802-104
1/2	9570	2	Mb-7	Fla	Job 7225-107
1/2	9697	2	Mb-5	Fla	Job 7917-101
1/2	1813	4	Mb-12	Fla	Job 7915-102
1/2	2121	4	Mb-7	Fla	Job 7915-102
1/2	4196	4	Mb-10	Fla	Job 7915-102
1/2	6250	4	Mb-10	Fla	Job 7915-102
3	6336	4	Mb-8	Fla	Job 7915-102
1/2	7097	2	Mb-5	Fla	Job 7915-102
1/2	7501	2	Mb-5	Fla	Job 7915-102
1/2	7948	2	Mb-7	Fla	Job 7915-102
1/2	8056	2	Mb-7	Fla	Job 7915-102
1/2	8599	4	Mb-5	Fla	Job 7915-102
1/2	8664	2	Mb-7	Fla	Job 7915-102
1/2	9069	2	Mb-5	Fla	Job 7915-102
1/2	9433	2	Mb-8	Fla	Job 7915-102
1/2	9985	2	Mb-5	Fla	Job 7915-102
1/2	349	4	Mb-5	Fla	Job 7915-102
3/2	581	4	Mb-2	N.C.	Job 7915-102
1/2	671	2	Mb-5	Fla	Job 7915-102
1/2	1153	2	Mb-8	Fla	Job 7915-102
1/2	1190	2	Mb-5	Fla	Job 7915-102
1/2	1443	4	Mb-5	Fla	Job 7915-102
1/2	1448	4	Mb-6	N.C.	Job 7915-102
1/2	1550	2	Mb-5	Fla	Job 7915-102
1/2	2013	2	Mb-8	Fla	Job 7915-102
1/2	3173	2	Mb-5	Fla	Job 7915-102
1/2	3556	4	Mb-10	Fla	Job 7915-102

All finished surfaces to be coated with No. oxide.

Hopkins Trunion Bascule Bridge Pat # 2066110  
**CENTER LOCK**  
 STANDARD DRAWING

**NASHVILLE BRIDGE COMPANY**  
 NASHVILLE, TENN.  
 BESSEMER PLANT

APPROVED FOR SHOP  
 2/26/50  
 CHIEF DRAFTSMAN  
 CHIEF ENGINEER

RIVETS \_\_\_\_\_ OR NOTED \_\_\_\_\_  
 HOLES \_\_\_\_\_ OR NOTED \_\_\_\_\_  
 FIELD CONN. \_\_\_\_\_  
 DRAWN BY  DATE 3/29/50  
 TRACED BY \_\_\_\_\_ DATE \_\_\_\_\_  
 CHECKED BY \_\_\_\_\_ DATE 4-11-50