

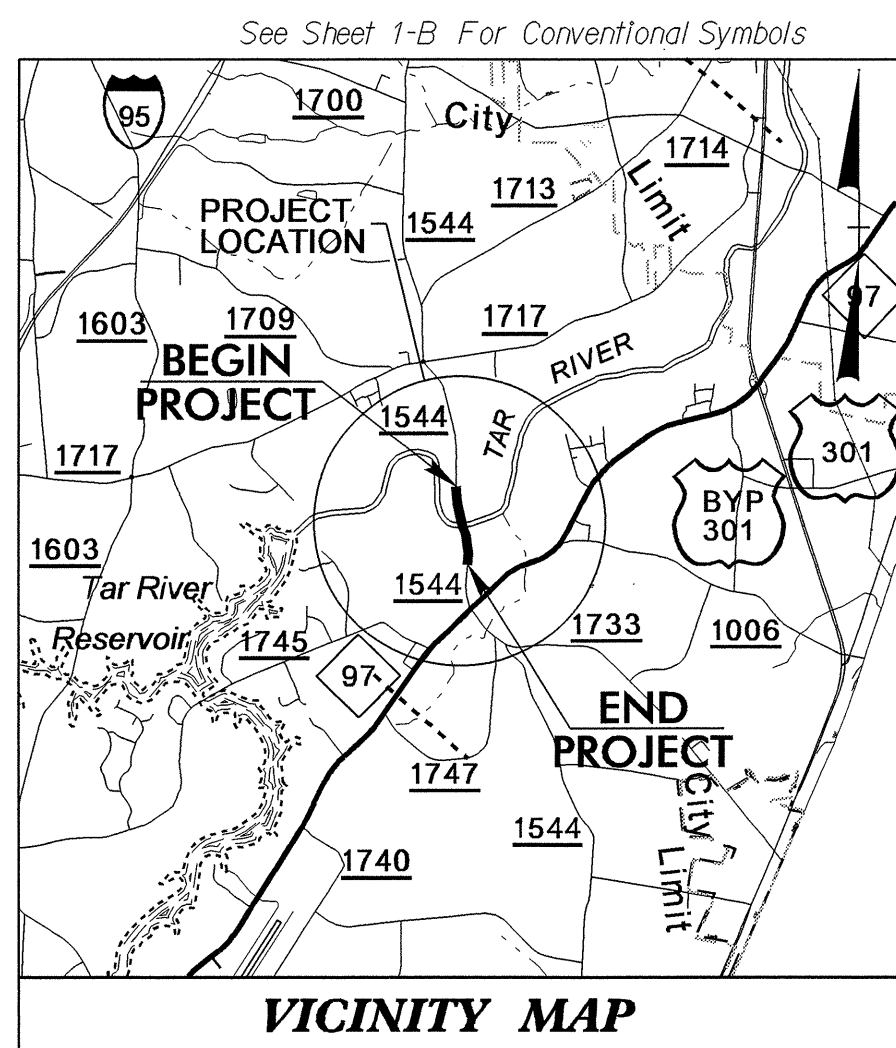
09/08/99

T.I.P. NO.	SHEET NO.
B-4211	UO-1

STATE OF NORTH CAROLINA
DIVISION OF HIGHWAYS

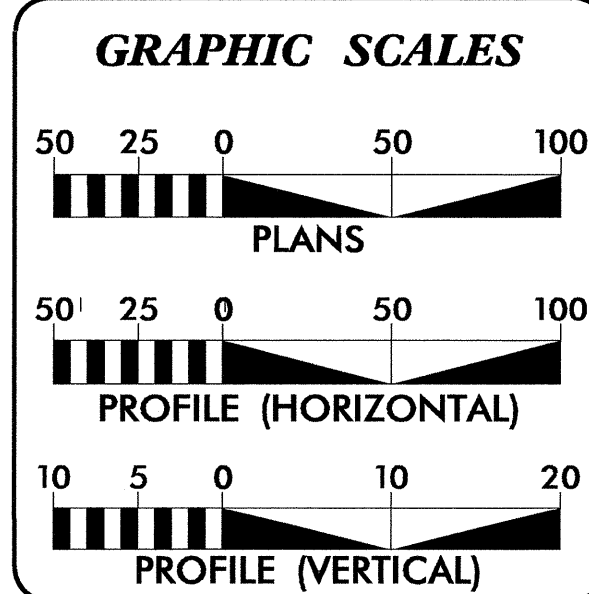
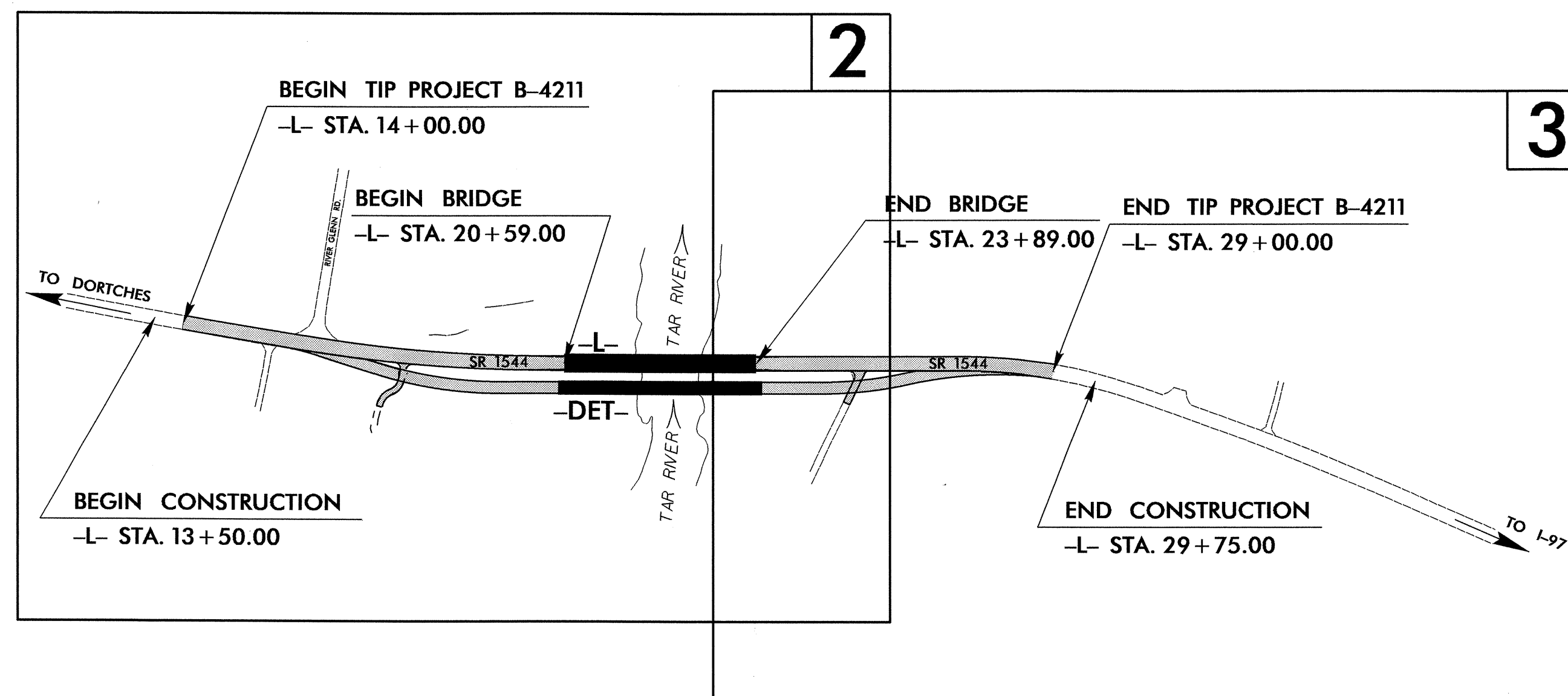
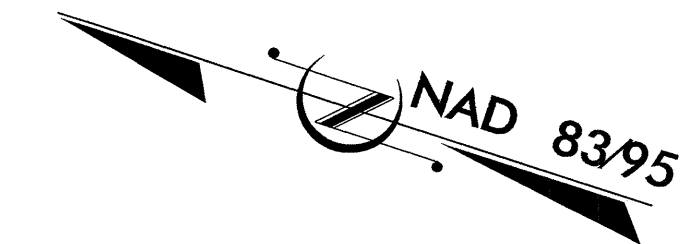
**UTILITIES BY OTHERS PLANS
NASH COUNTY**

TIP PROJECT: B-4211



LOCATION: NASH COUNTY

**TYPE OF WORK: RELOCATION OF GAS,
TELEPHONE AND CATV**

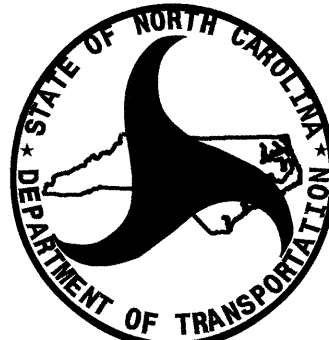


INDEX OF SHEETS

SHEET NO.	DESCRIPTION
UC-1	TITLE SHEET
UC-2 THRU UC-3	UTILITIES BY OTHERS PLAN SHEETS

UTILITY OWNERS ON PROJECT

- (1) CITY OF ROCKY MOUNT
- (2) CENTURYLINK TELEPHONE
- (3) SUDDENLINK CATV



PREPARED IN THE OFFICE OF:
**DIVISION OF HIGHWAYS
UTILITIES ENGINEERING
SECTION**

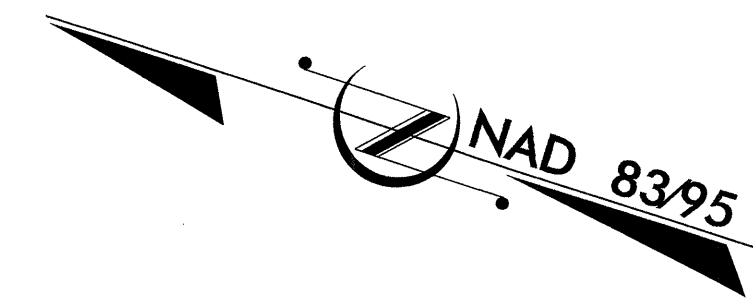
1591 MAIL SERVICES CENTER
RALEIGH NC 27699-1591
PHONE (919) 250-4128
FAX (919) 250-4119

Roger Worthington, P.E. UTILITIES SECTION ENGINEER
Corey Bousquet, P.E. UTILITIES SQUAD LEADER PROJECT ENGINEER
Kelvin Martin UTILITIES PROJECT DESIGNER

21-JUN-2011 15:31
R:\Utilities\RDY_Ut\Proj\B-4211\UT_Title_UO1_tsh.dgn
\$\$\$\$\$USERNAME\$\$\$\$\$

UTILITIES BY OTHERS

NOTE:
ALL PROPOSED UTILITY WORK
SHOWN ON THIS SHEET WILL
BE DONE BY OTHERS



SEE STRUCTURE PLANS FOR 6" GAS LINE
BRIDGE ATTACHMENT. 6" GAS LINE
ATTACHMENT TO THE BRIDGE WILL BE
INSTALLED BY NCDOT CONTRACTOR.

BEGIN TIP PROJECT B-4211
-L- POC STA. 14+00.00

BEGIN CONSTRUCTION
-L- STA. 13+50.00

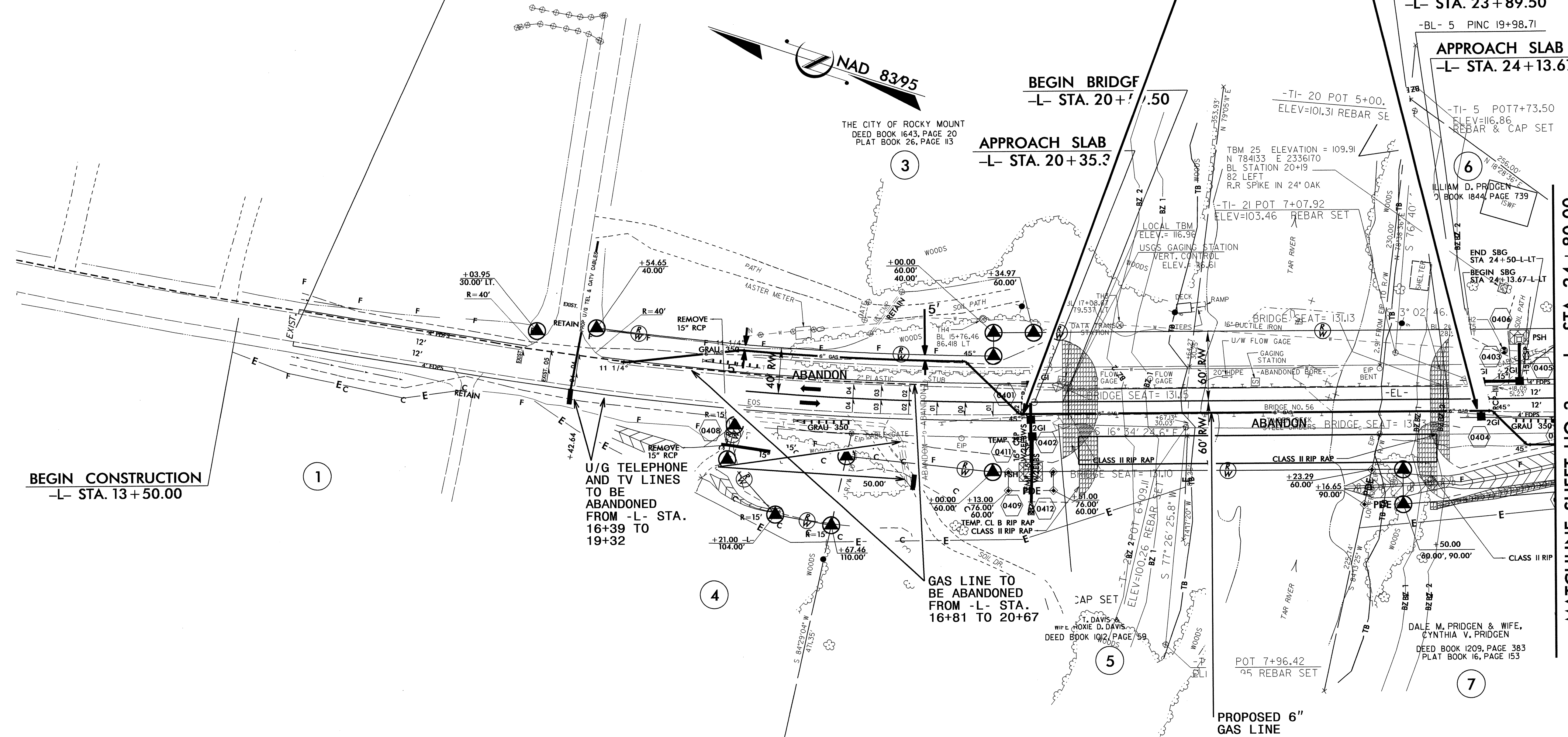
BEGIN BRIDGE
-L- STA. 20+71.50

APPROACH SLAB
-L- STA. 20+35.3

END BRIDGE
-L- STA. 23+89.50

APPROACH SLAB
-L- STA. 24+13.67

MATCHLINE SHEET U0-3
-L- STA 24+80.00



U/G TELEPHONE
AND TV LINES
TO BE
ABANDONED
FROM -L- STA.
16+39 TO
19+32

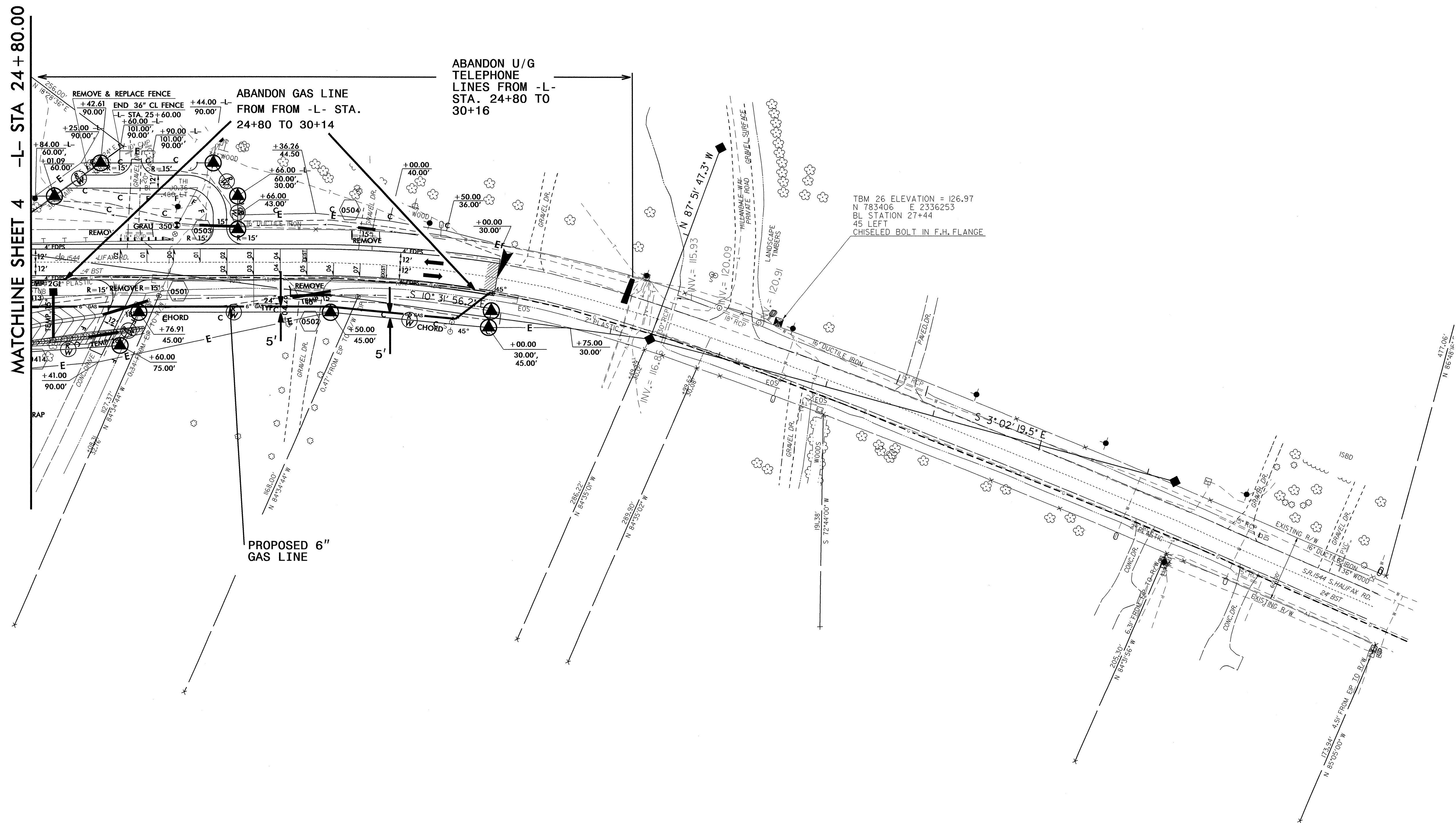
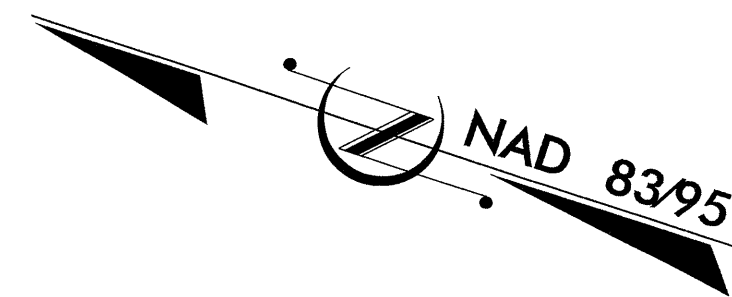
GAS LINE TO
BE ABANDONED
FROM -L- STA.
16+81 TO 20+67

5/14/99

21-JUN-2011 16:45
R:\v\utilities\Rocky Mt Proj\B-4211\Ut-4_U02_psh.dgn
\$\$\$\$\$USERNAME\$\$\$\$\$

UTILITIES BY OTHERS

NOTE:
ALL PROPOSED UTILITY WORK
SHOWN ON THIS SHEET WILL
BE DONE BY OTHERS



MATCHLINE SHEET 4 -L- STA 24+80.00

ABANDON U/G
TELEPHONE
LINES FROM -L-
STA. 24+80 TO
30+16

ABANDON GAS LINE
FROM FROM -L- STA.
24+80 TO 30+14

TBM 26 ELEVATION = 126.97
N 783406 E 2336253
BL STATION 27+44
45 LEFT
CHISELED BOLT IN F.H. FLANGE

PROPOSED 6"
GAS LINE