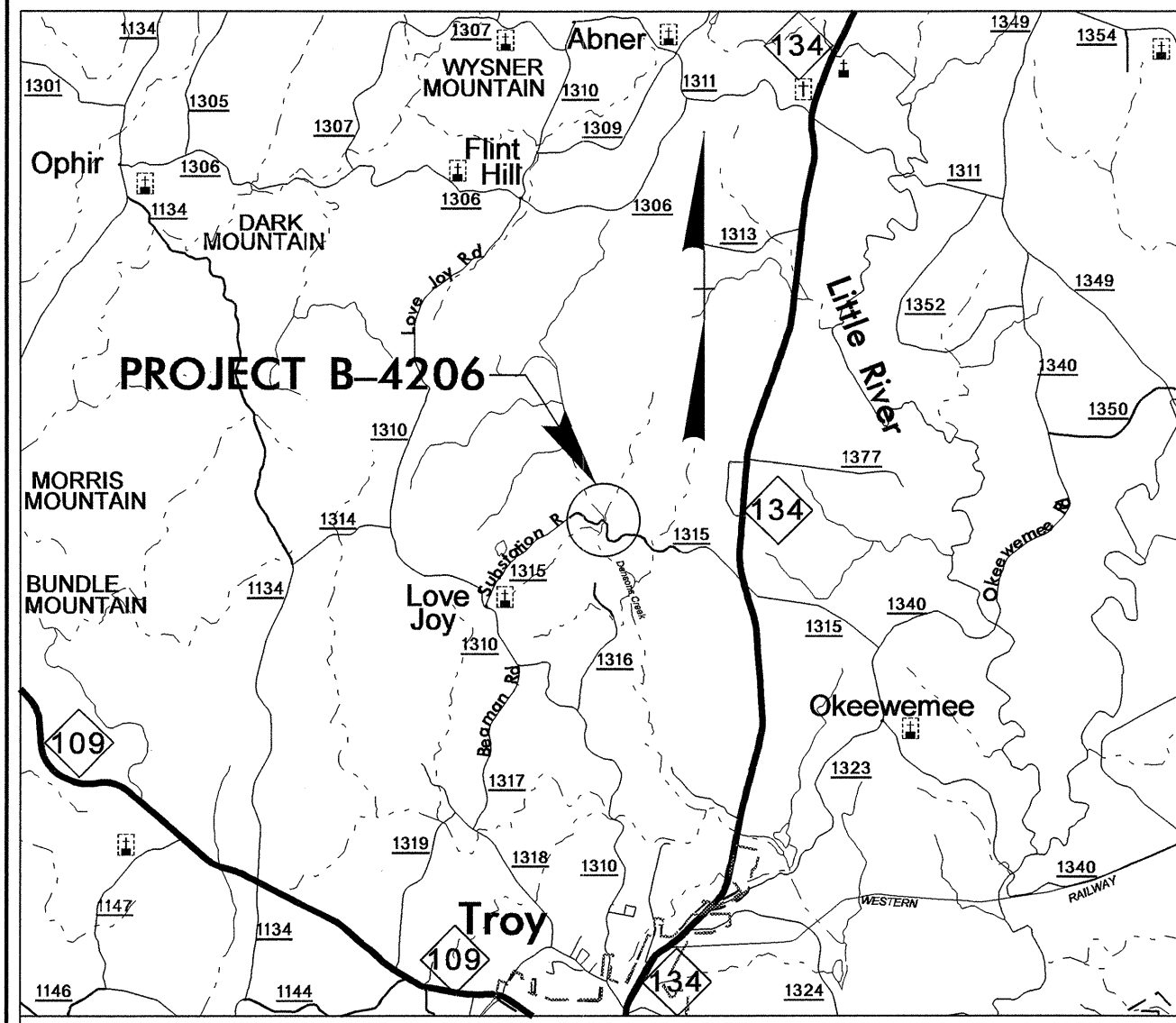


T.I.P. NO.	SHEET NO.
B-4206	UO-1

STATE OF NORTH CAROLINA
DIVISION OF HIGHWAYS

**UTILITIES BY OTHERS PLANS
MONTGOMERY COUNTY**

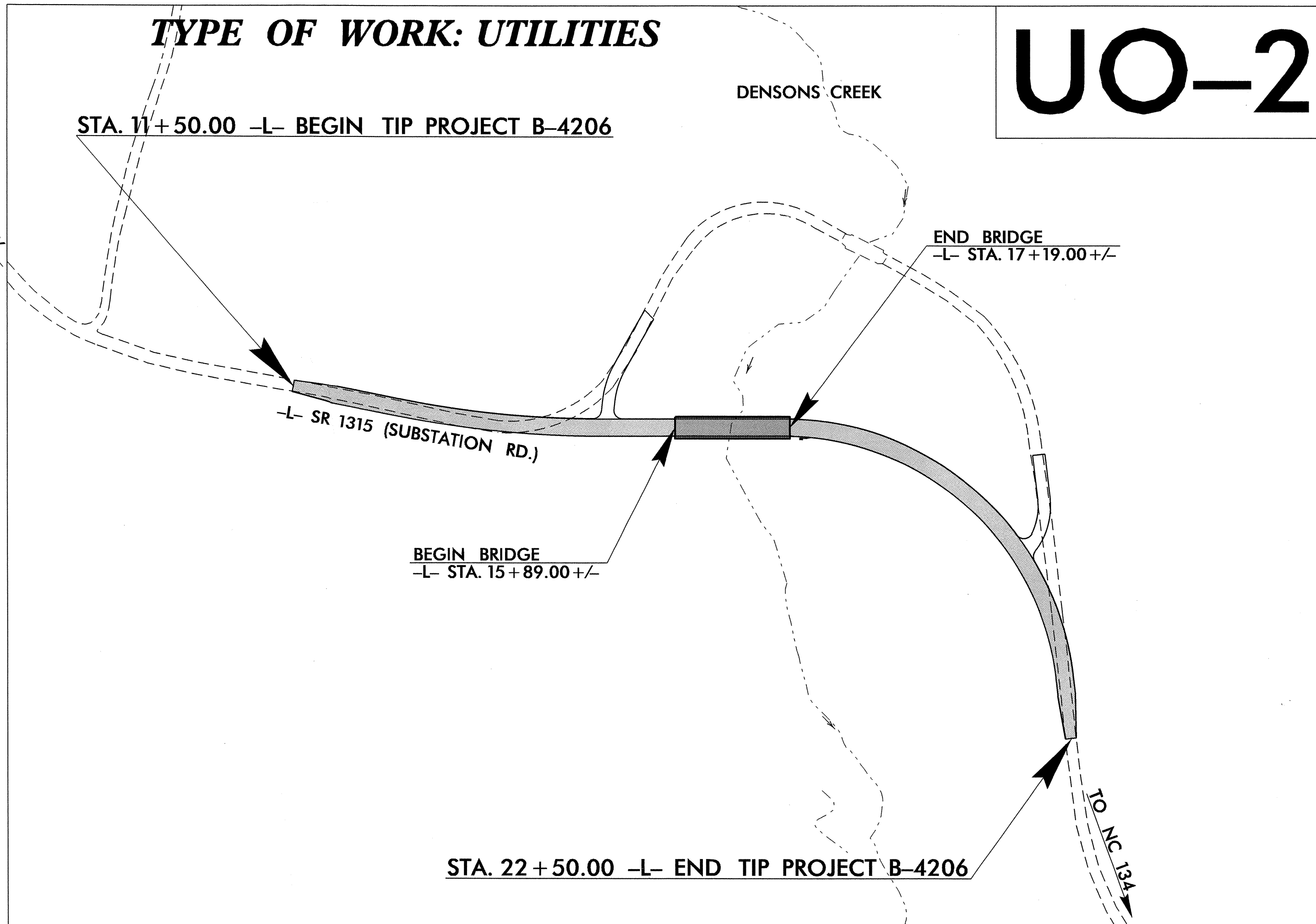
LOCATION: BRIDGE NO. 123 OVER DENSONS CREEK ON
SR 1315 (SUBSTATION ROAD)



VICINITY MAP

TYPE OF WORK: UTILITIES

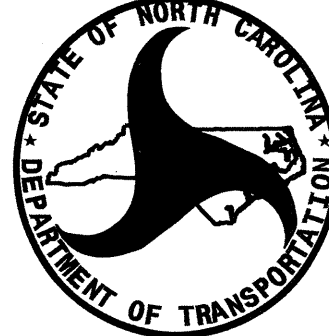
UO-2



TIP B-4206

INDEX OF SHEETS	
SHEET NO.	DESCRIPTION
UO-1	TITLE SHEET
UO-2	UTILITY BY OTHERS PLAN SHEET

UTILITY OWNERS ON PROJECT
(1) RANDOLPH EMC



PREPARED IN THE OFFICE OF:
**DIVISION OF HIGHWAYS
UTILITIES UNIT
ENGINEERING SECTION**

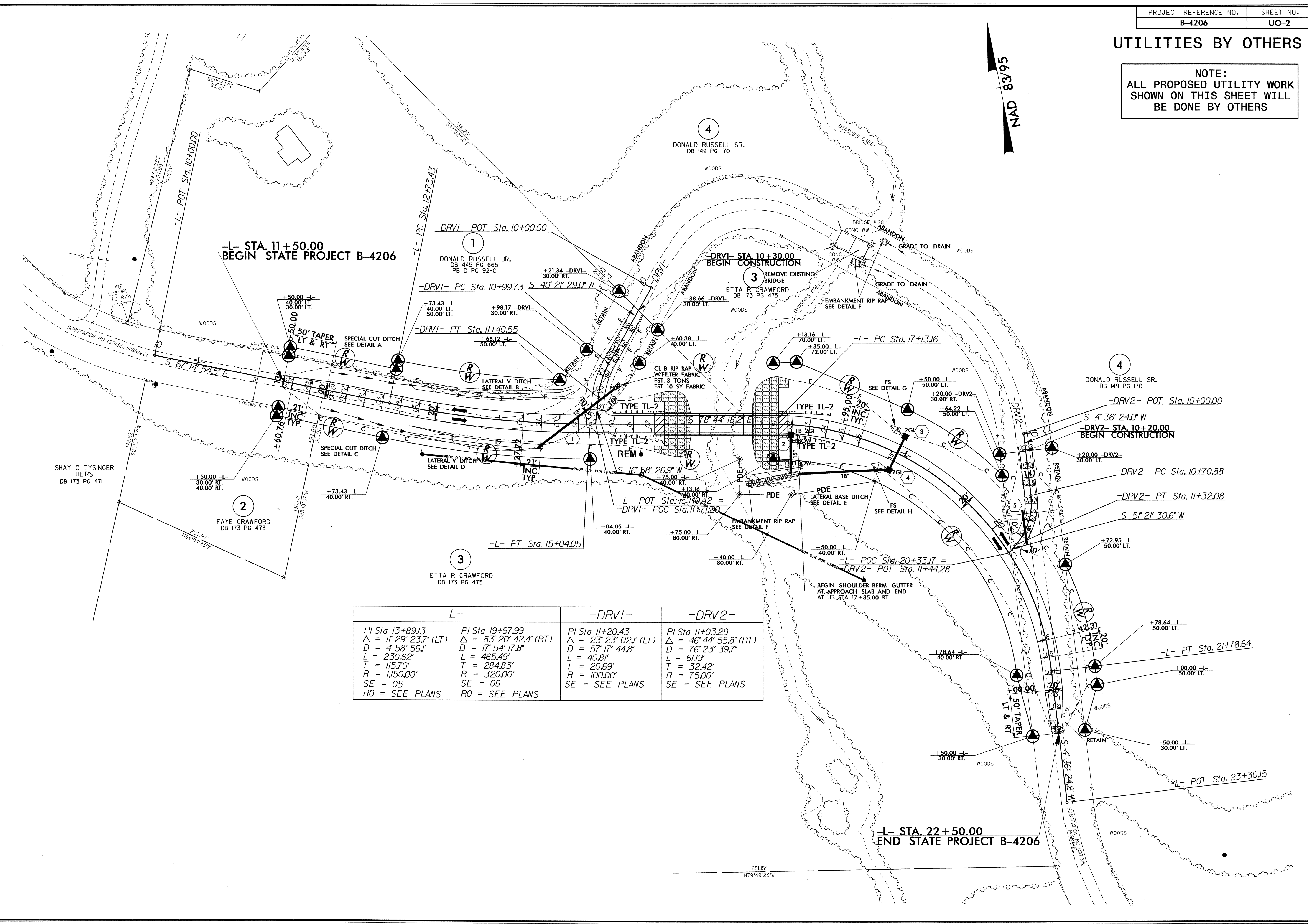
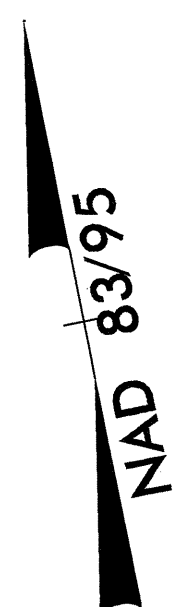
1555 MAIL SERVICES CENTER
RALEIGH, NC 27699-1555
PHONE (919) 250-4128
FAX (919) 250-4119

Roger Worthington, P.E.	UTILITIES SECTION ENGINEER
Steve Mckee, P.E.	UTILITIES SQUAD LEADER PROJECT ENGINEER
John A. Nigro, P.E.	UTILITIES PROJECT DESIGNER

02-MAY-2011 08:17 R:\Utilities\RDY_UF\Proj\B4206_utl_fsh_U01.dgn \$\$\$USERNAME\$\$\$

UTILITIES BY OTHERS

NOTE:
 ALL PROPOSED UTILITY WORK
 SHOWN ON THIS SHEET WILL
 BE DONE BY OTHERS



-L- STA. 11+50.00
 BEGIN STATE PROJECT B-4206

-L- STA. 22+50.00
 END STATE PROJECT B-4206

-L-		-DRV1-	-DRV2-
PI Sta 13+89.13	PI Sta 19+97.99	PI Sta 11+20.43	PI Sta 11+03.29
$\Delta = 11^{\circ} 29' 23.7''$ (LT)	$\Delta = 83^{\circ} 20' 42.4''$ (RT)	$\Delta = 23^{\circ} 23' 02.1''$ (LT)	$\Delta = 46^{\circ} 44' 55.8''$ (RT)
D = 4' 58' 56.1"	D = 17' 54' 17.8"	D = 57' 17' 44.8"	D = 76' 23' 39.7"
L = 230.62'	L = 465.49'	L = 40.81'	L = 61.19'
T = 115.70'	T = 284.83'	T = 20.69'	T = 32.42'
R = 1,150.00'	R = 320.00'	R = 100.00'	R = 75.00'
SE = 05	SE = 06	SE = SEE PLANS	SE = SEE PLANS
RO = SEE PLANS	RO = SEE PLANS		

5/14/99
 19-MAY-2011 08:38
 R:\Projects\2011\B-4206\Drawings\B-4206-UO2.dgn