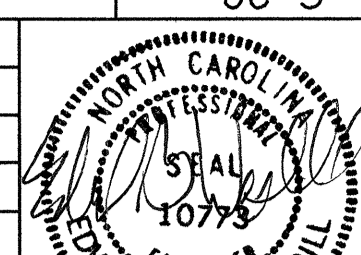




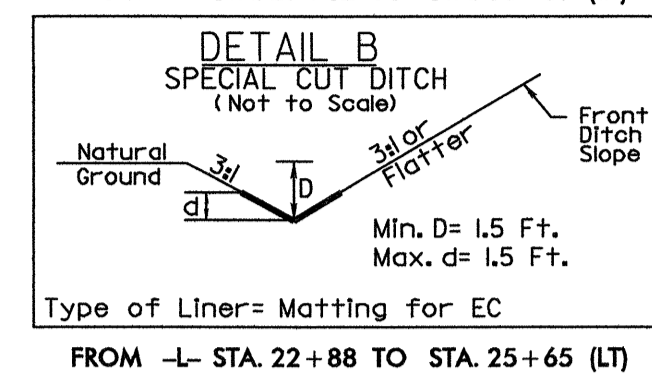
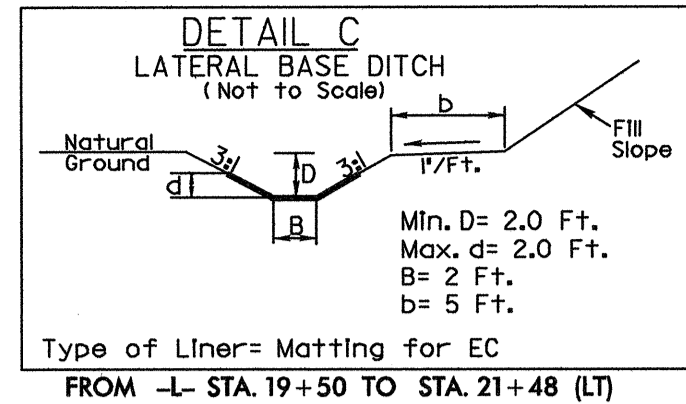
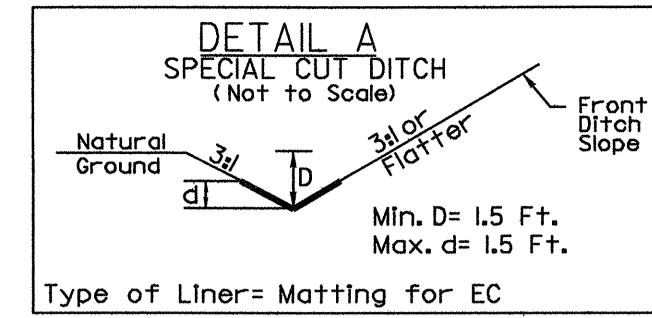
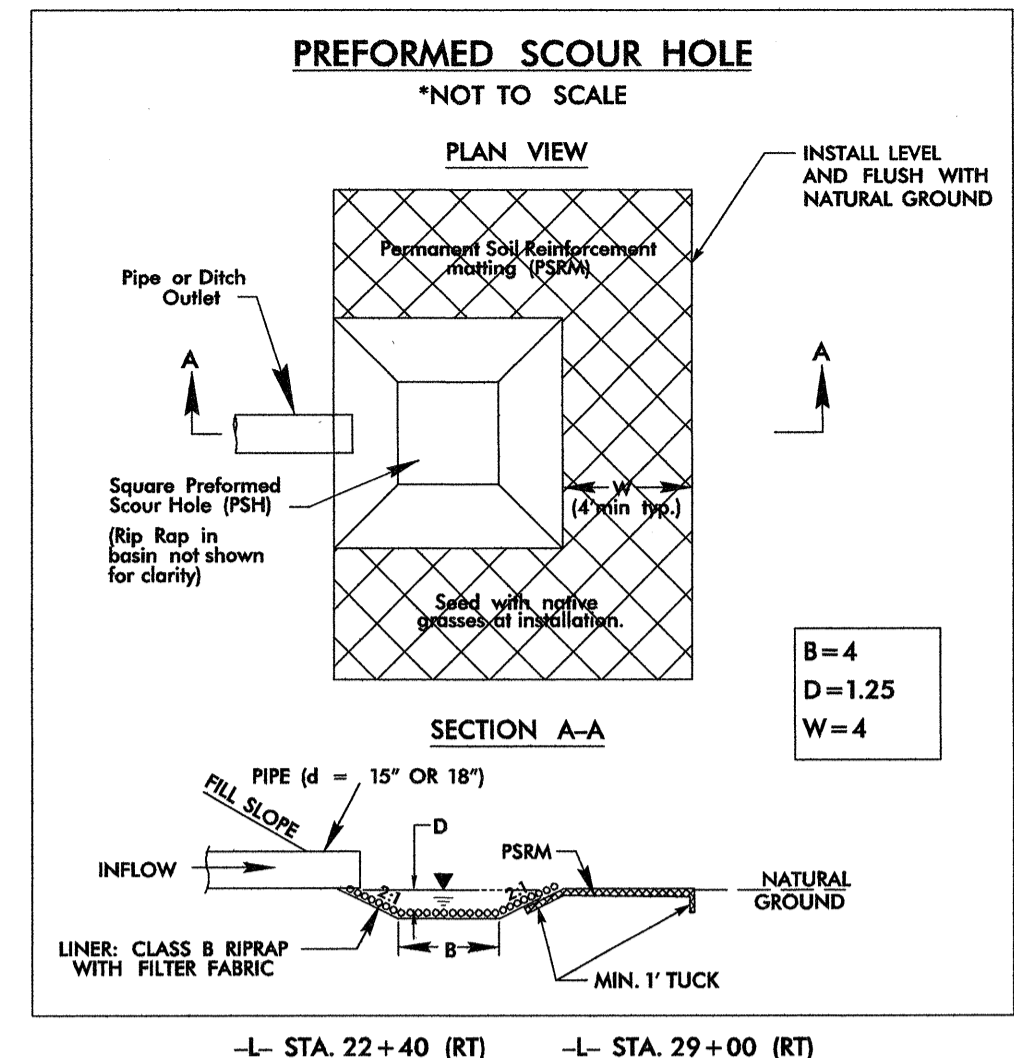




5/14/99

PROJECT REFERENCE NO. <b>R-5185</b>	SHEET NO. <b>UC-3</b>
DESIGNED BY: <b>DHP</b>	
DRAWN BY: <b>DHP</b>	
CHECKED BY: <b>DHP</b>	
APPROVED BY: <b>EGW</b>	
REVISED:	NORTH CAROLINA DEPARTMENT OF TRANSPORTATION 5/19/11 EDWARD G. WETHERILL ENGINEER UTILITY CONSTRUCTION PLANS ONLY

# UTILITY CONSTRUCTION

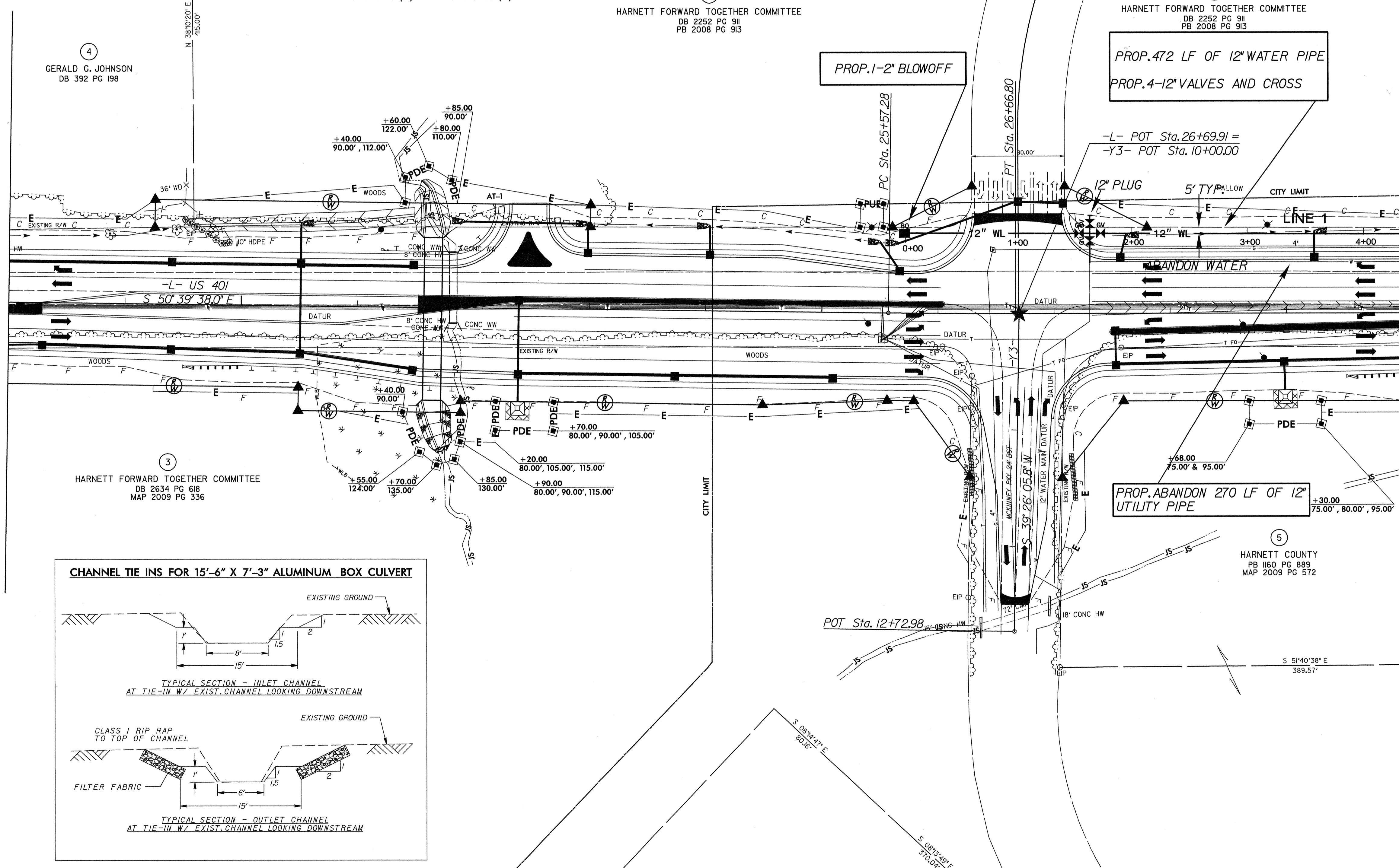


**-L- CURVE DATA**

PI Sta 26+12.04  
 $\Delta = 0^\circ 47' 03.6''$  (LT)  
 $D = 0^\circ 42' 58.3''$   
 $L = 109.51'$   
 $T = 54.76'$   
 $R = 8,000.00'$   
 $DS = 50$  MPH  
 $e = NC$

MATCH TO SHEET UC-2

MATCH TO SHEET UC-4

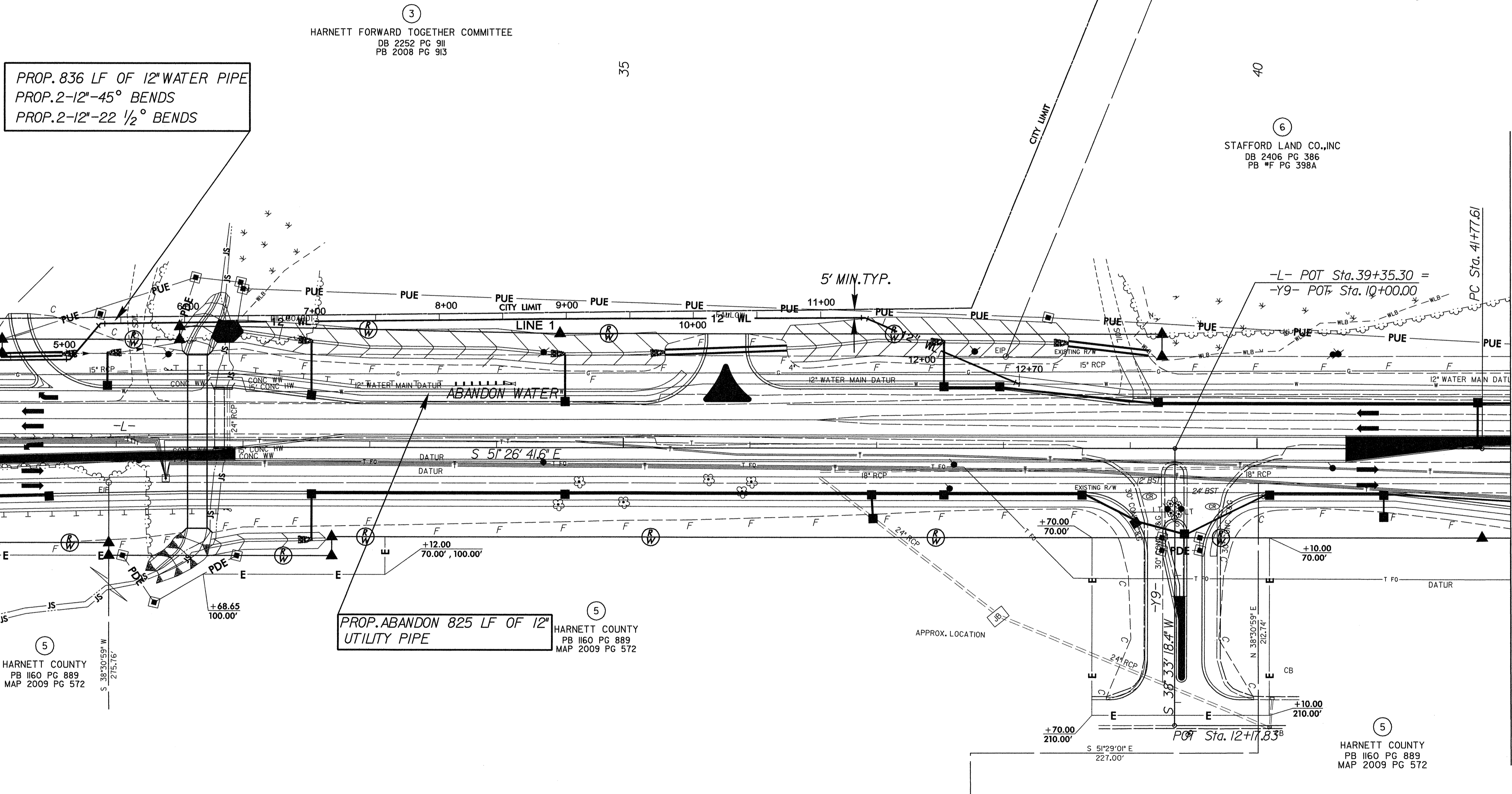
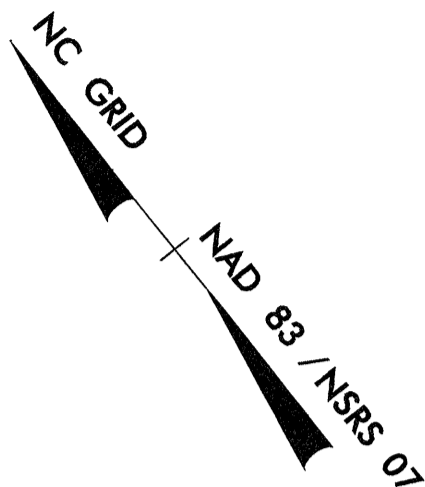
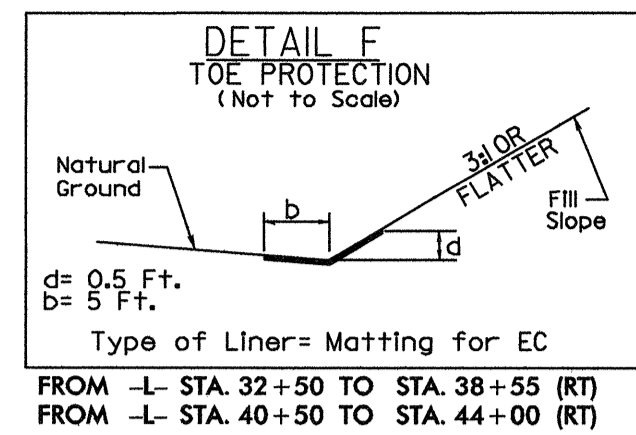
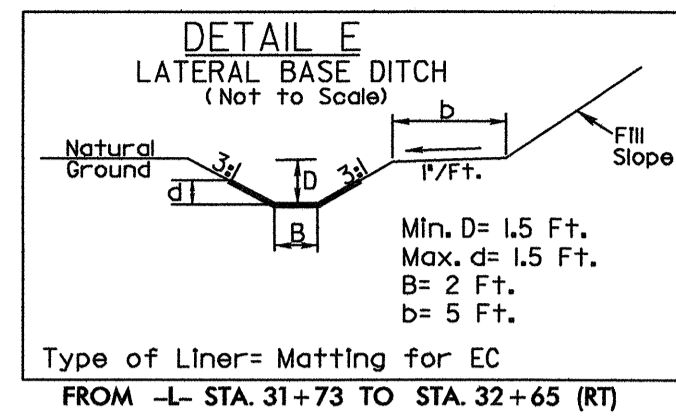
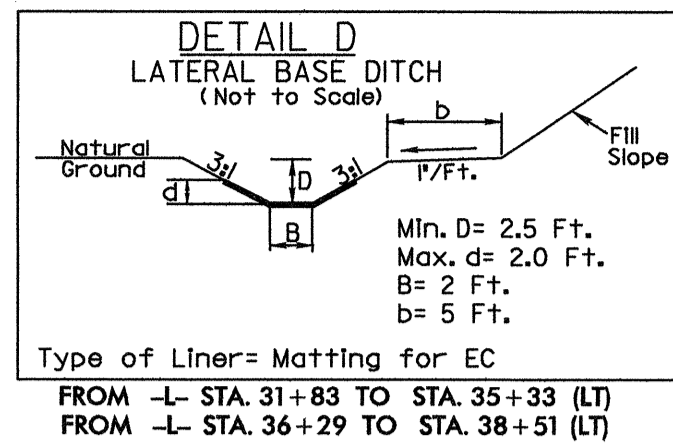
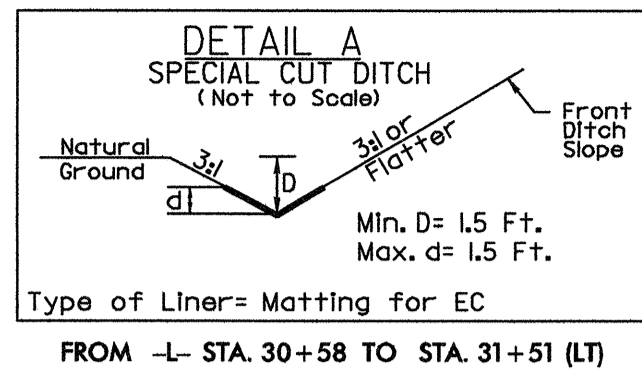


5/14/99

5/14/99

PROJECT REFERENCE NO.	SHEET NO.
R-5185	UC-4
DESIGNED BY: DHP	
DRAWN BY: DHP	
CHECKED BY: DHP	
APPROVED BY: EGW	
REVISED:	
NORTH CAROLINA DEPARTMENT OF TRANSPORTATION	
5/18/11	
UTILITY CONSTRUCTION PLANS ONLY	

# UTILITY CONSTRUCTION



PROP. 836 LF OF 12" WATER PIPE  
 PROP. 2-12"-45° BENDS  
 PROP. 2-12"-22 1/2° BENDS

3  
 HARNETT FORWARD TOGETHER COMMITTEE  
 DB 2252 PG 911  
 PB 2008 PG 913

35

6  
 STAFFORD LAND CO., INC  
 DB 2406 PG 386  
 PB #F PG 398A

MATCH TO SHEET UC-3

MATCH TO SHEET UC-5

5  
 PROP. ABANDON 825 LF OF 12" UTILITY PIPE  
 HARNETT COUNTY  
 PB 1160 PG 889  
 MAP 2009 PG 572

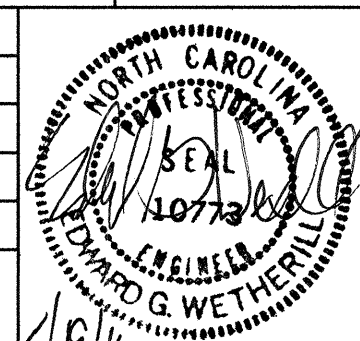
5  
 HARNETT COUNTY  
 PB 1160 PG 889  
 MAP 2009 PG 572

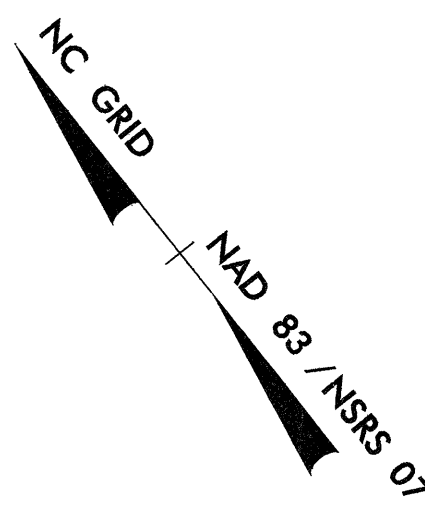
5  
 HARNETT COUNTY  
 PB 1160 PG 889  
 MAP 2009 PG 572

SYSTEMS DESIGN



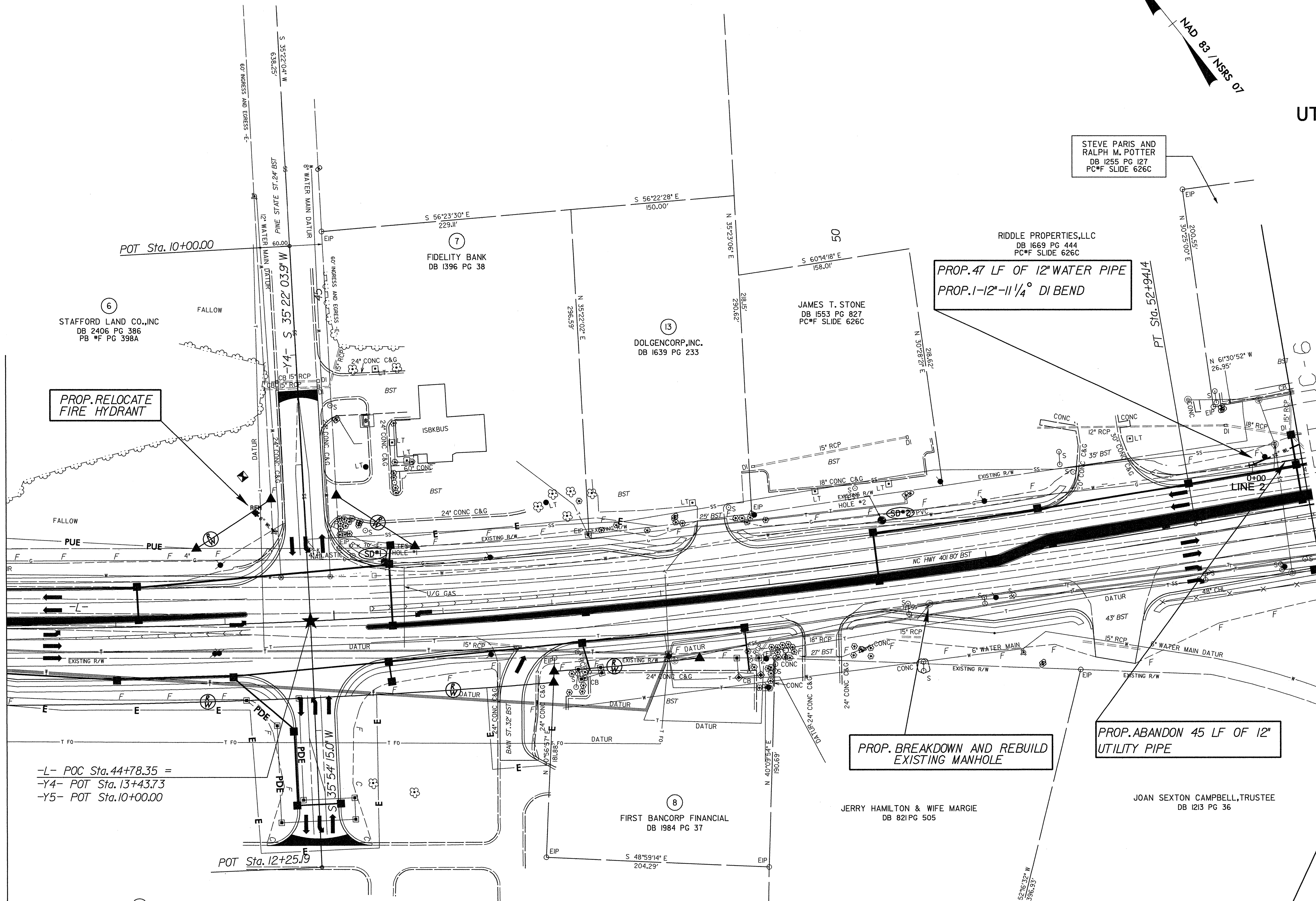
5/14/99

PROJECT REFERENCE NO. <b>R-5185</b>	SHEET NO. <b>UC-5</b>
DESIGNED BY: <b>DHP</b>	
DRAWN BY: <b>DHP</b>	
CHECKED BY: <b>DHP</b>	
APPROVED BY: <b>EGW</b>	
REVISED:	
NORTH CAROLINA DEPARTMENT OF TRANSPORTATION UTILITIES ENGINEERING SEC. PHONE: (919) 250-4128 FAX: (919) 250-4119	
UTILITY CONSTRUCTION PLANS ONLY	



MATCH TO SHEET UC-4

MATCH TO SHEET UC-6



**PROP. RELOCATE  
FIRE HYDRANT**

**PROP. 47 LF OF 12\"/>**

**PROP. BREAKDOWN AND REBUILD  
EXISTING MANHOLE**

**PROP. ABANDON 45 LF OF 12\"/>**

-L- POC Sta. 44+78.35 =  
 -Y4- POT Sta. 13+43.73  
 -Y5- POT Sta. 10+00.00

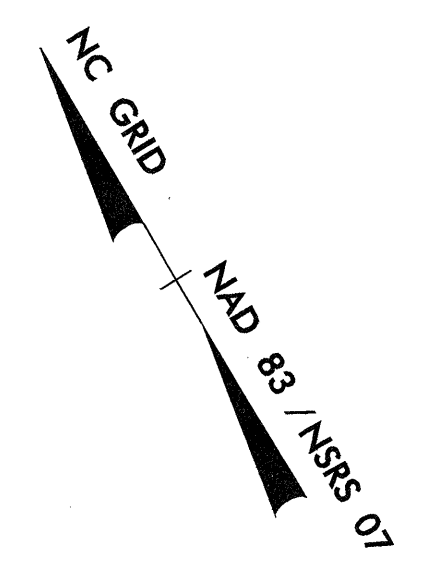
5  
 HARNETT COUNTY  
 PB 1160 PG 889  
 MAP 2009 PG 572

SOFT DIG LOCATIONS					
MARK	STATION	OFFSET	ELEVATION	DEPTH	DESCRIPTION
1	45+49.65	50.46' LT	169.56	3.80'	4\"/>
2	50+09.52	46.54' LT	173.20	3.60'	12\"/>

NOTE: SOFT DIG LOCATIONS FOR INFORMATION ONLY  
 CONTACT VAUGH & MELTON (828) 253-2796  
 FOR EXACT LOCATION AND ELEVATION

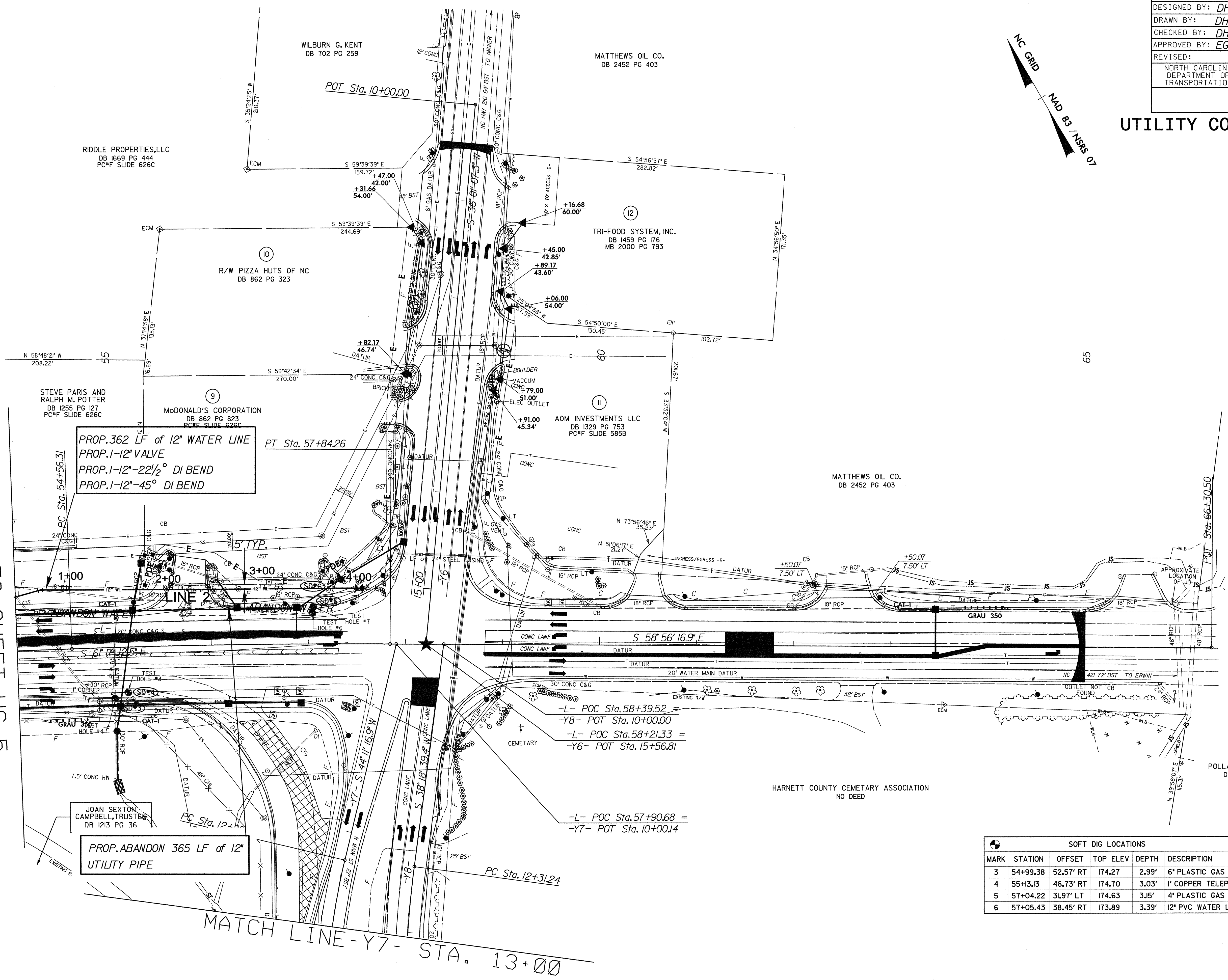
SYTIME/VAUGH & MELTON

# UTILITY CONSTRUCTION



5/14/09

MATCH TO SHEET UC-5



PROP. 362 LF of 12" WATER LINE  
 PROP. 1-12" VALVE  
 PROP. 1-12"-22 1/2° DI BEND  
 PROP. 1-12"-45° DI BEND

PROP. ABANDON 365 LF of 12" UTILITY PIPE

-L- POC Sta. 58+39.52 =  
 -Y8- POT Sta. 10+00.00  
 -L- POC Sta. 58+21.33 =  
 -Y6- POT Sta. 15+56.81

-L- POC Sta. 57+90.68 =  
 -Y7- POT Sta. 10+00.14

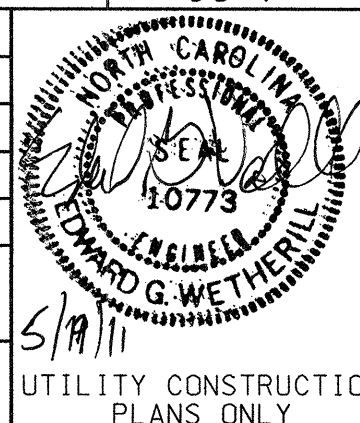
SOFT DIG LOCATIONS					
MARK	STATION	OFFSET	TOP ELEV	DEPTH	DESCRIPTION
3	54+99.38	52.57' RT	174.27	2.99'	6" PLASTIC GAS LINE
4	55+13.13	46.73' RT	174.70	3.03'	1" COPPER TELEPHONE LINE
5	57+04.22	31.97' LT	174.63	3.15'	4" PLASTIC GAS LINE
6	57+05.43	38.45' RT	173.89	3.39'	12" PVC WATER LINE

MATCH LINE - Y7 - STA. 13+00

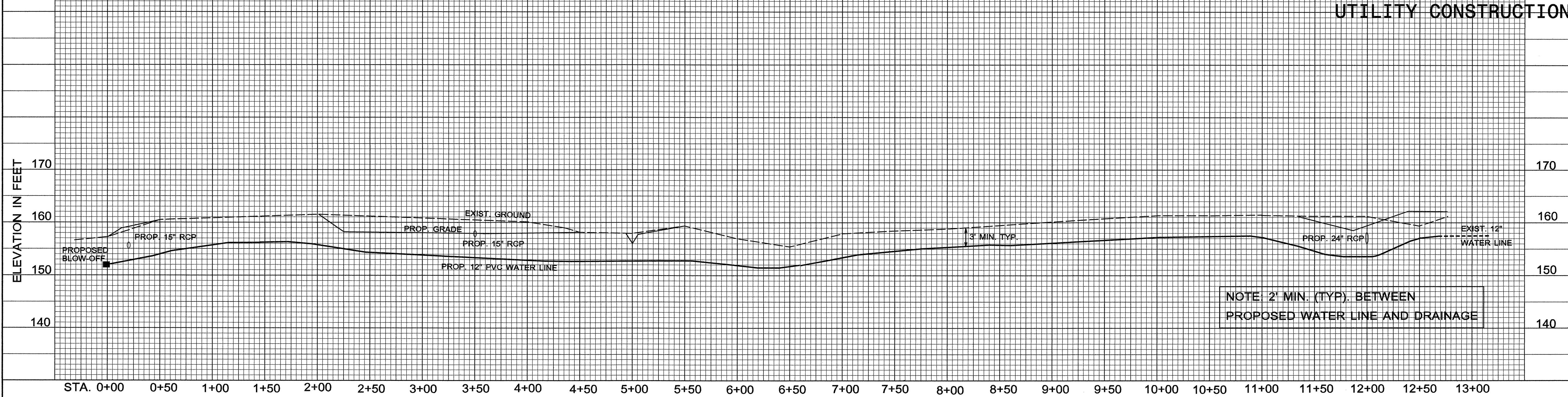
SYSTEMS DESIGN CONSULTANTS



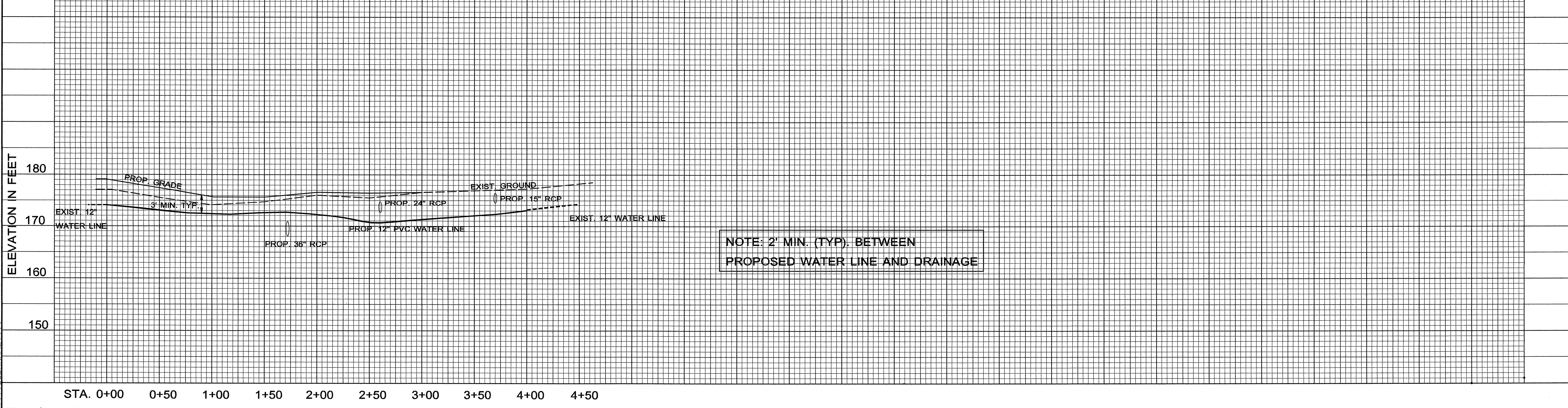
5/28/99

PROJECT REFERENCE NO.	SHEET NO.
R-5185	UC-7
DESIGNED BY: DHP	
DRAWN BY: DHP	
CHECKED BY: DHP	
APPROVED BY: EGW	
REVISED:	
UTILITY CONSTRUCTION PLANS ONLY	

## PROPOSED 12" PVC WATER LINE 1 (SEE SHEET UC-3 AND UC-4)



## PROPOSED 12" PVC WATER LINE 2 (SEE SHEET UC-5 AND UC-6)



UTILITY CONSTRUCTION PLANS ONLY







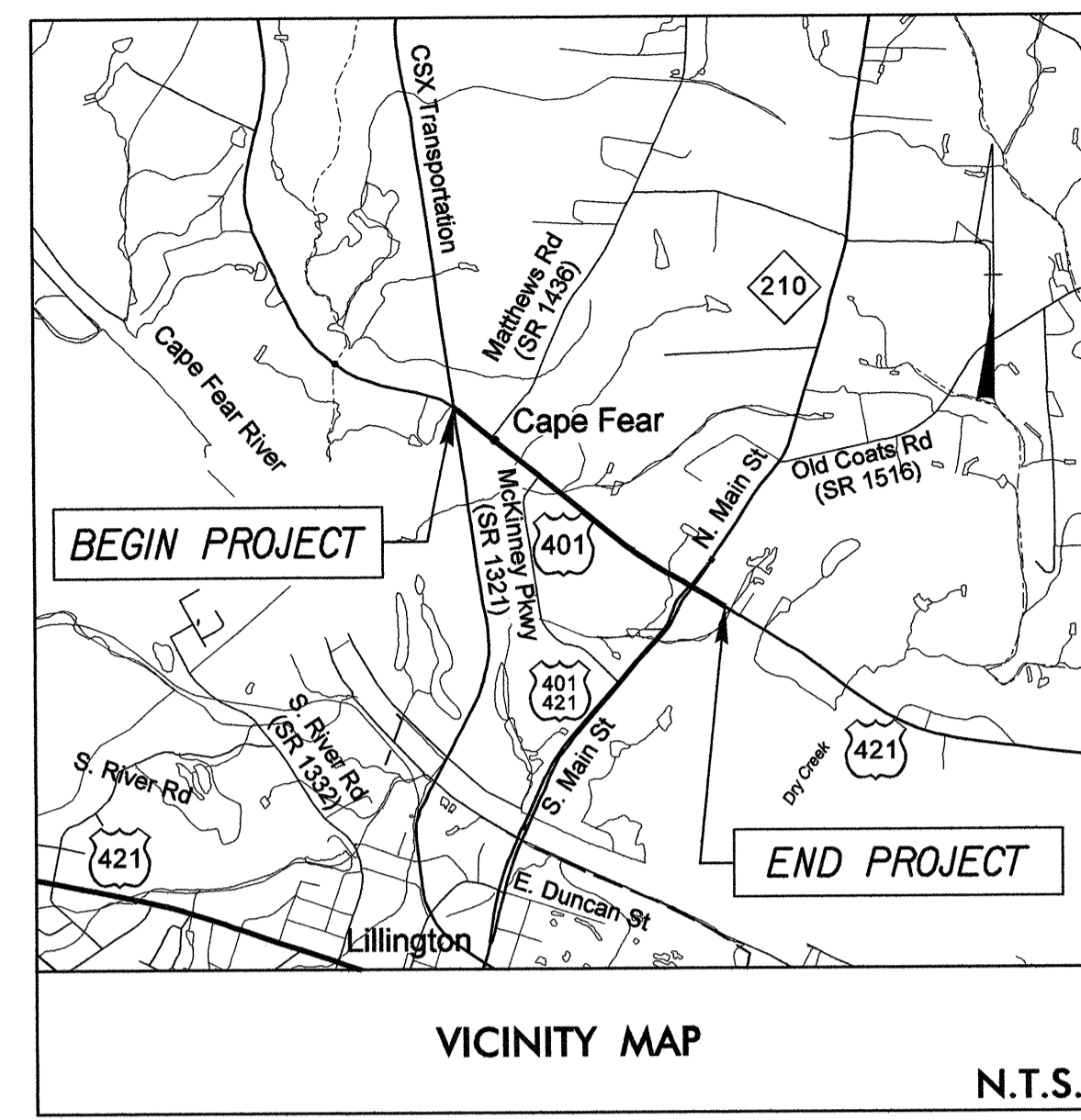
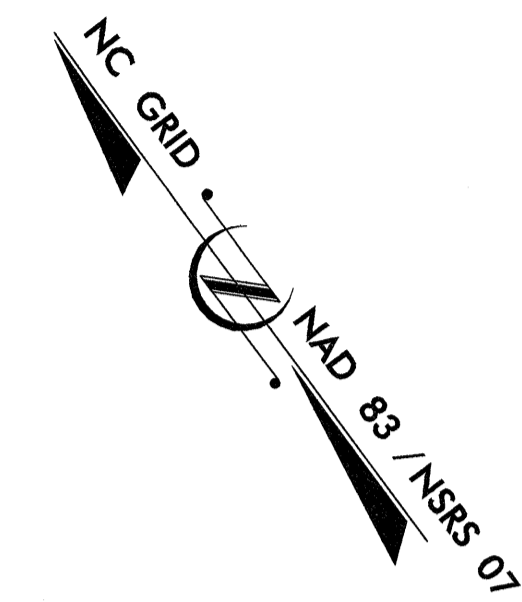
See Sheet 1A For Index of Sheets  
See Sheet 1B For Standard Symbology Sheet

# STATE OF NORTH CAROLINA DIVISION OF HIGHWAYS

## UTILITIES BY OTHERS PLANS HARNETT COUNTY

**LOCATION: US 401 IN LILLINGTON FROM NORTH  
OF MATHEWS RD. (SR 1436) TO NC 210**

**TYPE OF WORK: UTILITIES BY OTHERS RELOCATION**



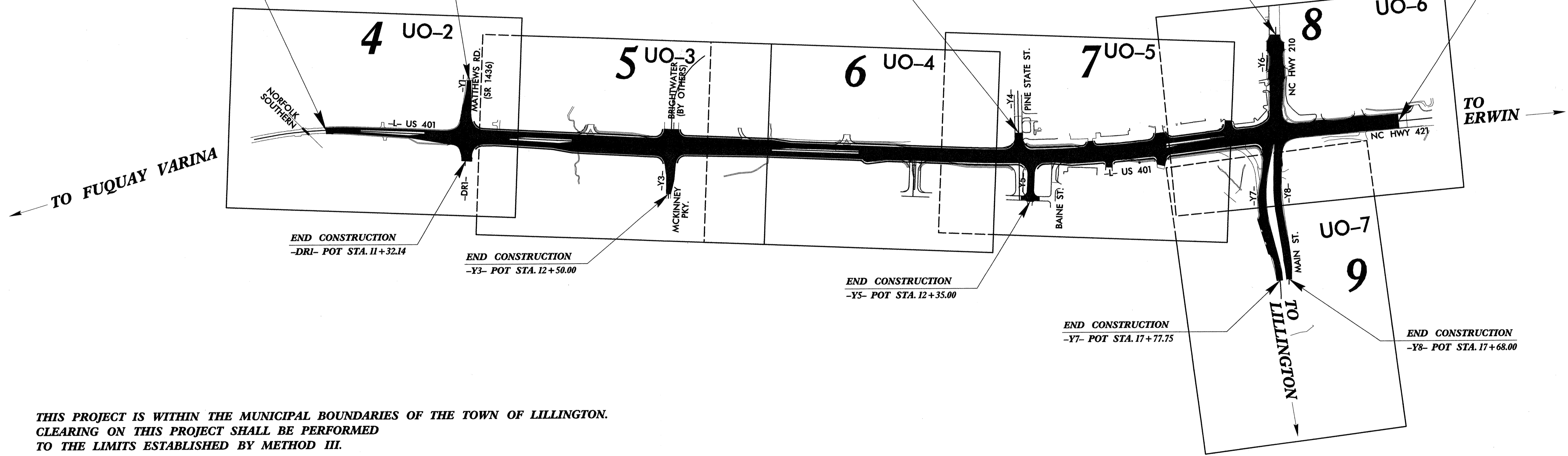
**BEGIN TIP PROJECT R-5185**  
-L- STA. 8+75.00

**BEGIN CONSTRUCTION**  
-Y1- POT STA. 10+13.12

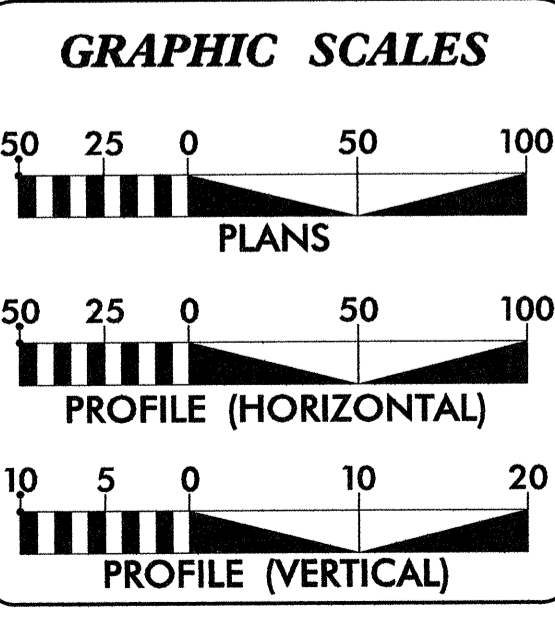
**BEGIN CONSTRUCTION**  
-Y4- POT STA. 12+20.00

**BEGIN CONSTRUCTION**  
-Y6- POT STA. 10+40.00

**END TIP PROJECT R-5185**  
-L- STA. 64+57.00



**THIS PROJECT IS WITHIN THE MUNICIPAL BOUNDARIES OF THE TOWN OF LILLINGTON.  
CLEARING ON THIS PROJECT SHALL BE PERFORMED  
TO THE LIMITS ESTABLISHED BY METHOD III.**



**INDEX OF SHEETS**

SHEET NO.	DESCRIPTION
UO-1	TITLE SHEET
UO-2 THRU UO-7	UTILITY BY OTHERS PLAN SHEETS

- UTILITY OWNERS ON PROJECT**
- PROGRESS ENERGY CAROLINAS, INC. (POWER DISTRIBUTION)
  - TIME WARNER CABLE (CATV)
  - CENTURYLINK (TELEPHONE)
  - PIEDMONT NATURAL GAS (GAS)

559 JONES FRANKLIN ROAD  
SUITE 164  
Raleigh, N.C. 27606  
Bus: 919 851 8077  
Fax: 919 851 8107  
License: F-0377

**Prepared by**

UTILITY COORDINATOR DANNY PURYEAR

FOR:  
DIVISION OF HIGHWAYS  
UTILITIES and ENCROACHMENT  
ENGINEERING UNIT

191 MAIL SERVICES CENTER  
RALEIGH, NC 27699-1291  
PHONE (919) 256-4128  
FAX (919) 256-4119

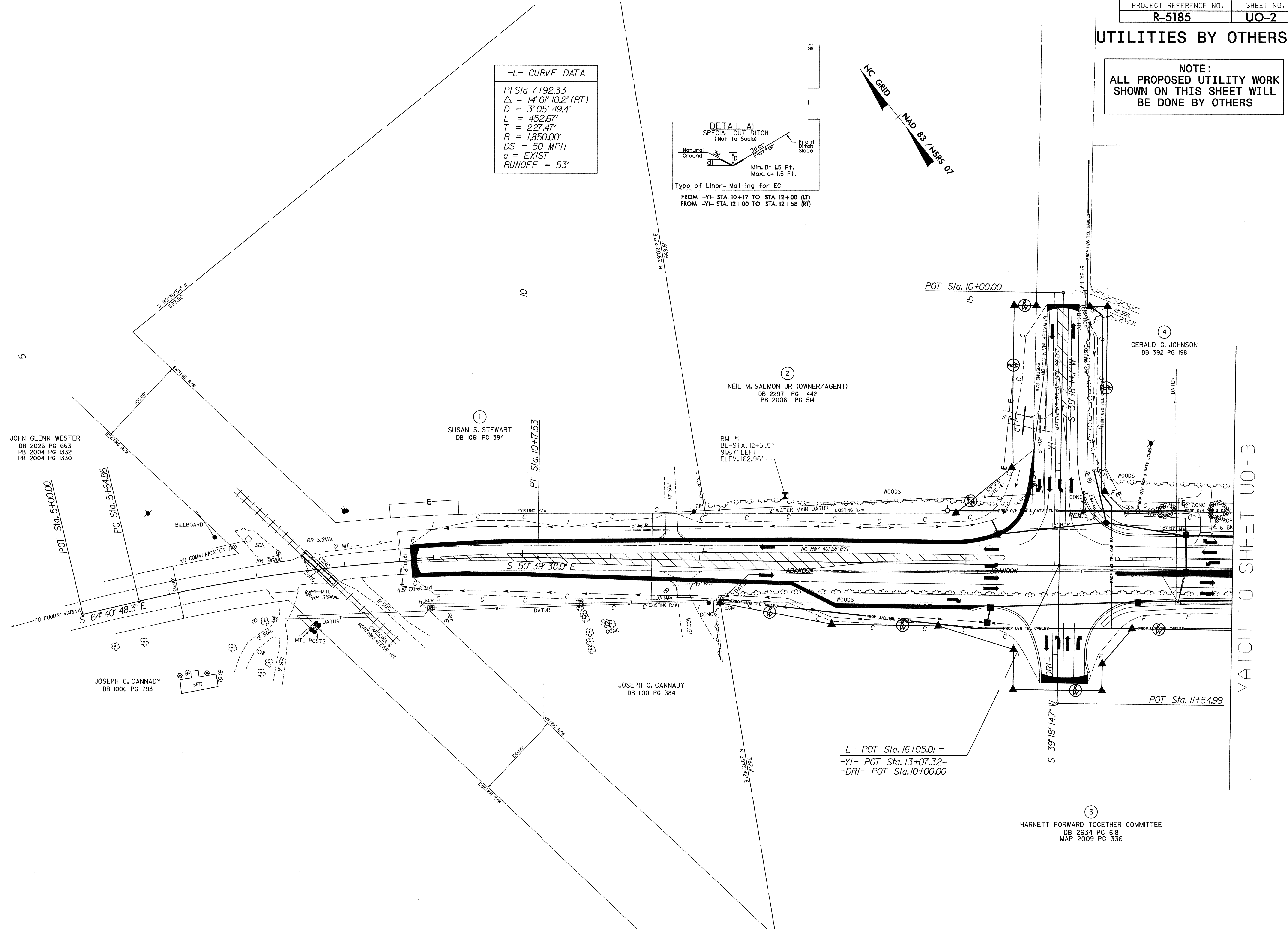
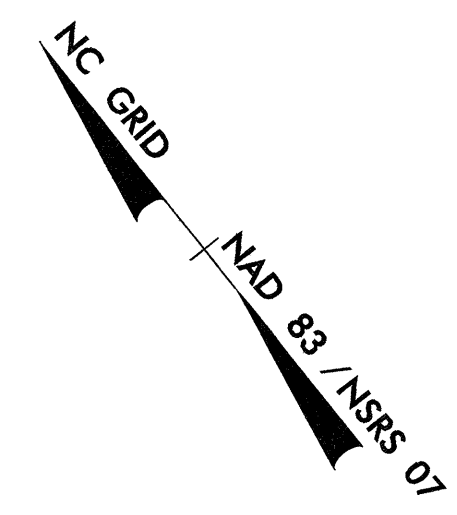
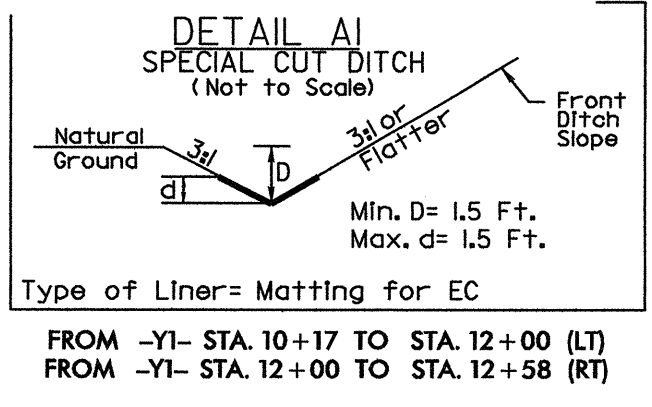
Roger Worthington, P.E. UTILITIES SECTION ENGINEER  
Corey Bousquet, P.E. UTILITIES SQUAD LEADER PROJECT ENGINEER  
Kelvin Martin UTILITIES PROJECT DESIGNER

CONTRACT: C202597 TIP PROJECT: R-5185  
 \$\$\$SYTIME\$\$\$\$\$DGN\$\$\$\$\$USERNAME\$\$\$\$\$

UTILITIES BY OTHERS

NOTE:  
ALL PROPOSED UTILITY WORK  
SHOWN ON THIS SHEET WILL  
BE DONE BY OTHERS

-L- CURVE DATA  
PI Sta 7+92.33  
 $\Delta = 14^{\circ} 01' 10.2''$  (RT)  
D = 3' 05' 49.4"  
L = 452.67'  
T = 227.47'  
R = 1,850.00'  
DS = 50 MPH  
e = EXIST  
RUNOFF = 53'



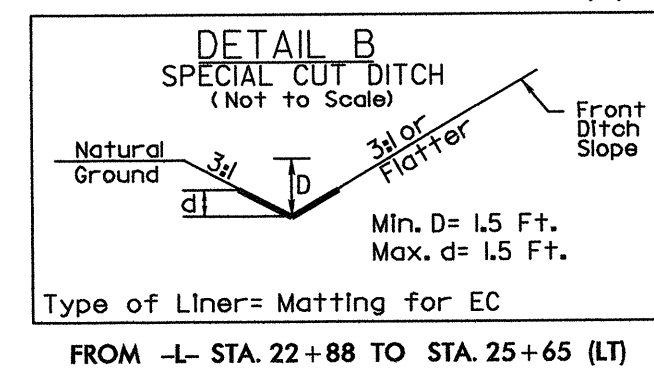
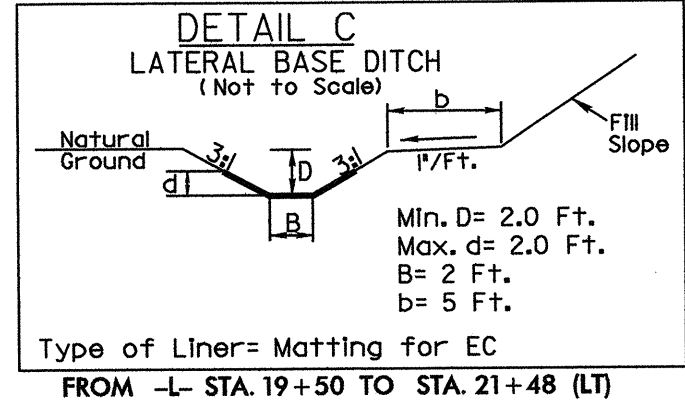
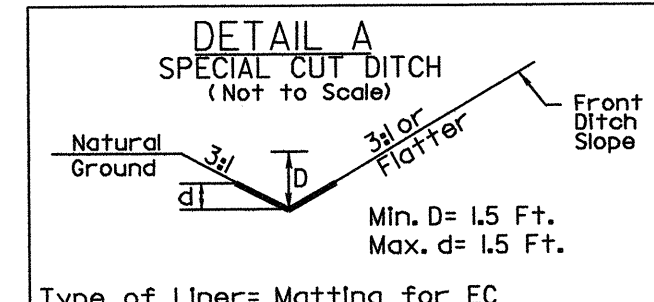
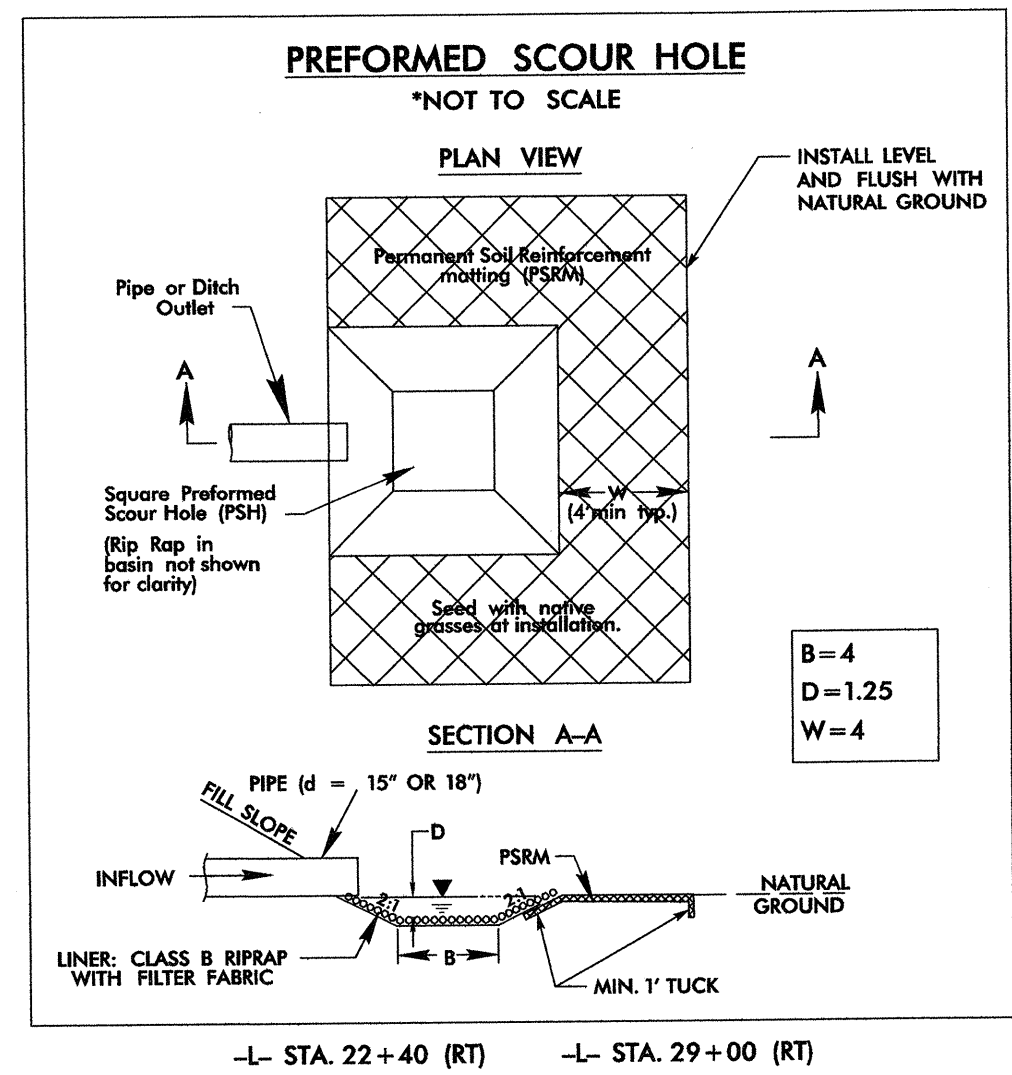
MATCH TO SHEET UO-3

5/14/99  
STIMES  
CONSTRUCTION



UTILITIES BY OTHERS

NOTE:  
ALL PROPOSED UTILITY WORK  
SHOWN ON THIS SHEET WILL  
BE DONE BY OTHERS

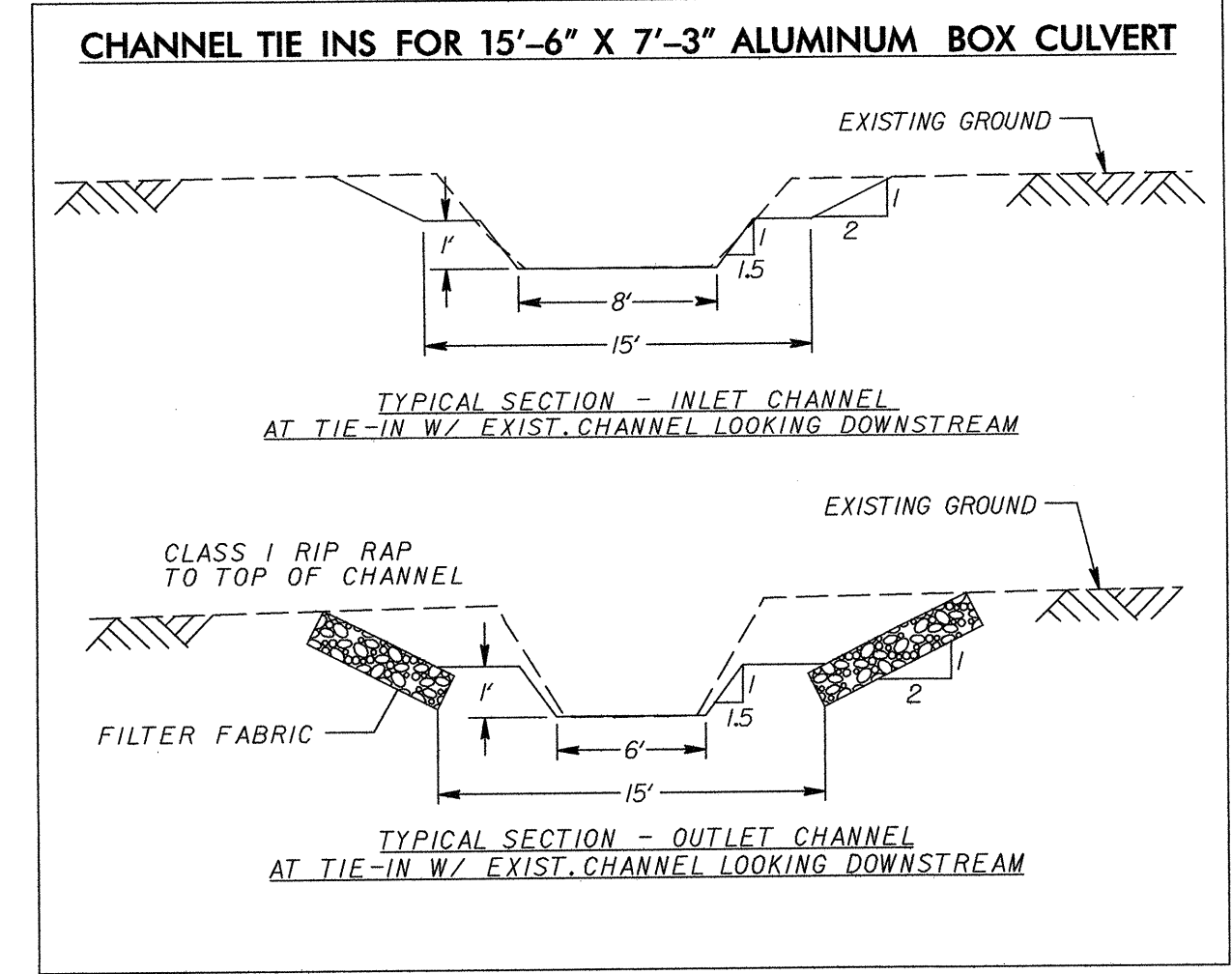
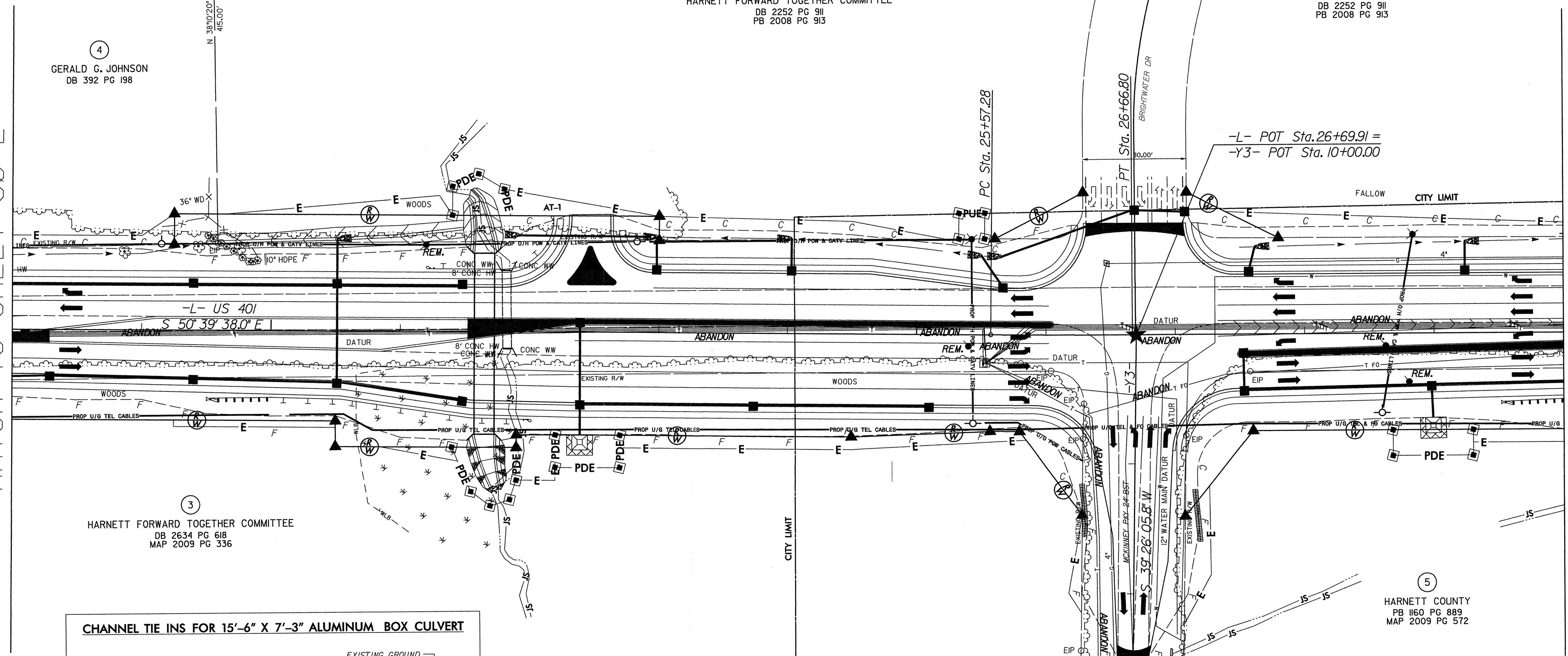


**-L- CURVE DATA**

PI Sta 26+12.04  
Δ = 0° 47' 03.6" (LT)  
D = 0° 42' 58.3"  
L = 109.51'  
T = 54.76'  
R = 8,000.00'  
DS = 50 MPH  
e = NC

MATCH TO SHEET UO-2

MATCH TO SHEET UO-4



5/14/99  
TIME: 10:00 AM  
DATE: 5/14/99  
DRAWN BY: J. L. ...  
CHECKED BY: ...  
SCALE: AS SHOWN





UTILITIES BY OTHERS

NOTE:  
ALL PROPOSED UTILITY WORK  
SHOWN ON THIS SHEET WILL  
BE DONE BY OTHERS

-L- CURVE DATA  
 PI Sta 47+37.25  
 $\Delta = 9^{\circ} 50' 30.9" (LT)$   
 $D = 0^{\circ} 52' 53.3"$   
 $L = 1,116.53'$   
 $T = 559.64'$   
 $R = 6,500.00'$   
 $DS = 50 MPH$   
 $e = RC$   
 $RUNOFF = 92'$

STEVE PARIS AND  
RALPH M. POTTER  
DB 1255 PG 127  
PC#F SLIDE 626C

RIDDLE PROPERTIES,LLC  
DB 1669 PG 444  
PC#F SLIDE 626C

JAMES T. STONE  
DB 1553 PG 827  
PC#F SLIDE 626C

DOLGENCORP,INC.  
DB 1639 PG 233

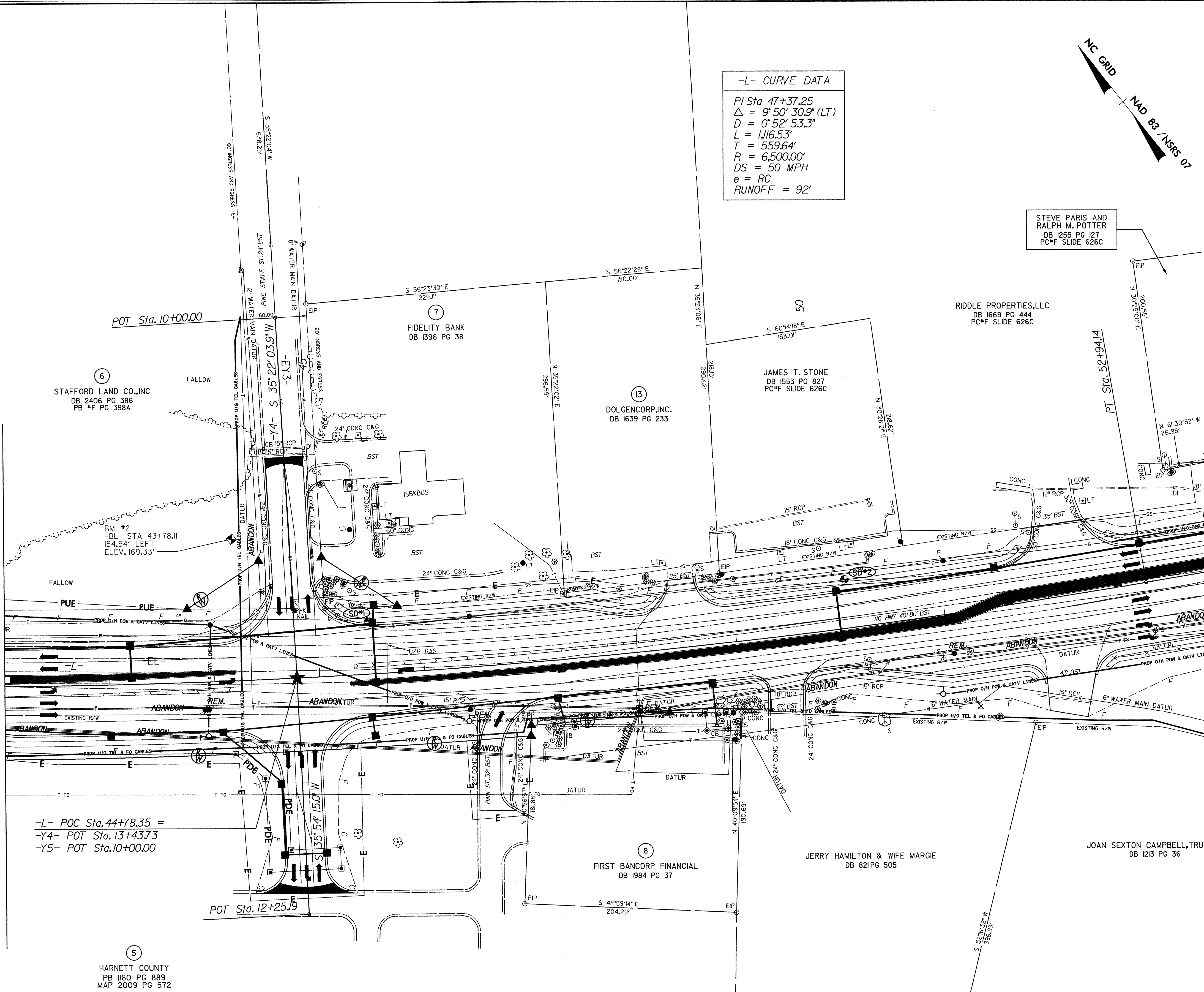
FIRST BANCORP FINANCIAL  
DB 1984 PG 37

JERRY HAMILTON & WIFE MARGIE  
DB 821 PG 505

JOAN SEXTON CAMPBELL,TRUSTEE  
DB 1213 PG 36

MATCH TO SHEET UO-4

MATCH TO SHEET UO-6



-L- POC Sta.44+78.35 =  
 -Y4- POT Sta.13+43.73  
 -Y5- POT Sta.10+00.00

HARNETT COUNTY  
PB 1160 PG 889  
MAP 2009 PG 572

SOFT DIG LOCATIONS					
MARK	STATION	OFFSET	ELEVATION	DEPTH	DESCRIPTION
1	45+49.65	50.46' LT	169.56	3.80'	4" PLASTIC GAS LINE
2	50+09.52	46.54' LT	173.20	3.60'	12" PVC WATER LINE

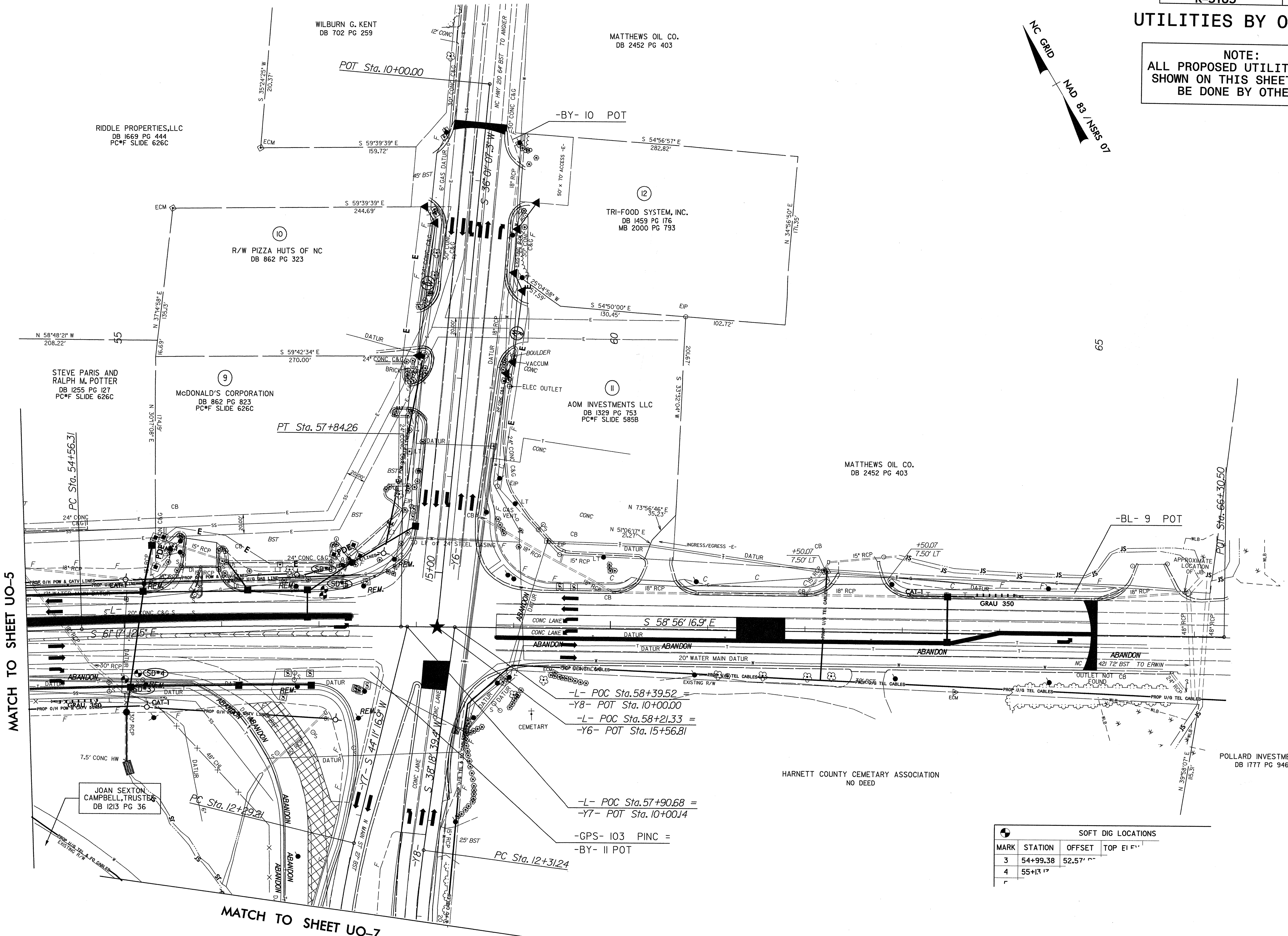
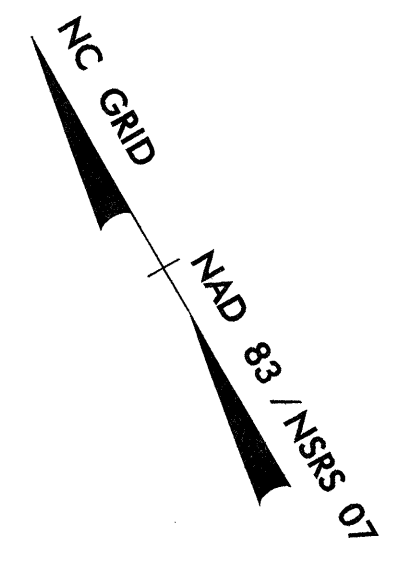
NOTE: SOFT DIG LOCATIONS FOR INFORMATION ONLY  
 CONTACT VAUGH & MELTON (828) 253-2796  
 FOR EXACT LOCATION AND ELEVATION

5/14/99  
 69 68 67 66 65 64 63 62 61 60 59 58 57 56 55 54 53 52 51 50 49 48 47 46 45 44 43 42 41 40 39 38 37 36 35 34 33 32 31 30 29 28 27 26 25 24 23 22 21 20 19 18 17 16 15 14 13 12 11 10 9 8 7 6 5 4 3 2 1



UTILITIES BY OTHERS

NOTE:  
ALL PROPOSED UTILITY WORK  
SHOWN ON THIS SHEET WILL  
BE DONE BY OTHERS



MATCH TO SHEET UO-5

MATCH TO SHEET UO-7

- L- POC Sta. 58+39.52
- Y8- POT Sta. 10+00.00
- L- POC Sta. 58+21.33 =
- Y6- POT Sta. 15+56.81

- L- POC Sta. 57+90.68 =
- Y7- POT Sta. 10+00.14
- GPS- I03 PINC =
- BY- II POT

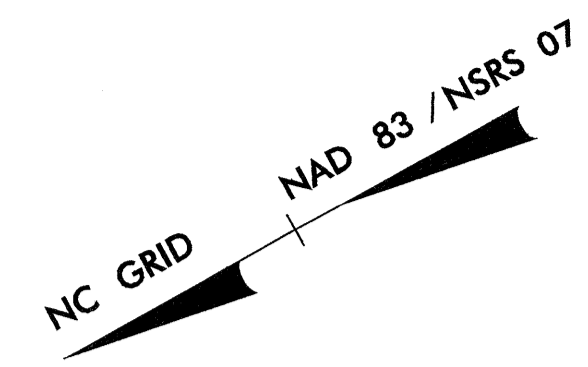
SOFT DIG LOCATIONS			
MARK	STATION	OFFSET	TOP ELEV.
3	54+99.38	52.57'	
4	55+13.17		

5/14/99



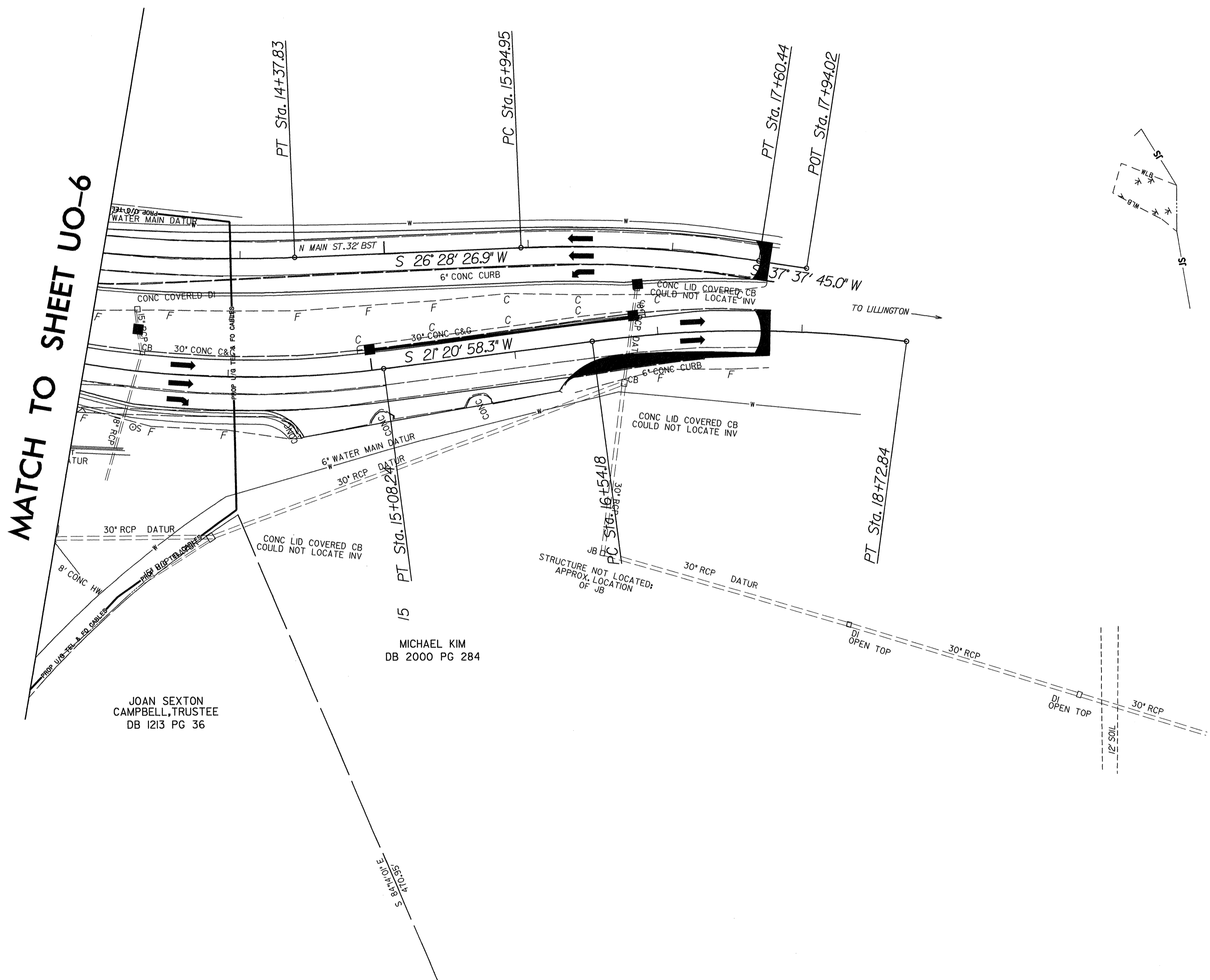
UTILITIES BY OTHERS

NOTE:  
ALL PROPOSED UTILITY WORK  
SHOWN ON THIS SHEET WILL  
BE DONE BY OTHERS



-Y7- CURVE DATA	
PI Sta 13+70.61	PI Sta 17+64.15
$\Delta = 22^\circ 50' 18.6''$ (LT)	$\Delta = 15^\circ 05' 39.7''$ (RT)
D = 8' 11" 06.4"	D = 6' 54" 11.2"
L = 279.03'	L = 218.66'
T = 141.39'	T = 109.97'
R = 700.00'	R = 830.00'
e = EXIST	e = EXIST

-Y8- CURVE DATA	
PI Sta 13+34.91	PI Sta 16+77.96
$\Delta = 11^\circ 50' 12.5''$ (LT)	$\Delta = 11^\circ 09' 18.1''$ (RT)
D = 5' 43" 46.5"	D = 6' 44" 26.4"
L = 206.59'	L = 165.49'
T = 103.66'	T = 83.01'
R = 1,000.00'	R = 850.00'
e = EXIST	e = EXIST



15

MICHAEL KIM  
DB 2000 PG 284

JOAN SEXTON  
CAMPBELL, TRUSTEE  
DB 1213 PG 36

5/14/99  
STATIONING  
CON  
TIME  
DATE  
BY  
CHECKED  
DATE  
BY  
DATE  
BY