

STATE OF NORTH CAROLINA
DEPARTMENT OF TRANSPORTATION

| | |
|----------------------|---------------------|
| TIP NO. B-4522 | SHEET NO. SIGN-1 |
| APPROVED: <i>RWF</i> | |
| DATE: 6/14/11 | |
| SEAL | |
| | |

SIGNING PLAN
GRANVILLE COUNTY

LOCATION: BRIDGE 102 OVER THE TAR RIVER
ON SR 1150 (GOOCH'S MILL RD)

ROADWAY STANDARD DRAWING

THE FOLLOWING ROADWAY STANDARDS AS APPEAR IN "ROADWAY STANDARD DRAWINGS" - PROJECT SERVICES UNIT - N.C. DEPARTMENT OF TRANSPORTATION - RALEIGH, N.C., DATED JULY 2006 ARE APPLICABLE TO THIS PROJECT AND BY REFERENCE HEREBY ARE CONSIDERED A PART OF THESE PLANS:

| STD. NO. | TITLE |
|----------|--|
| 904.10 | ORIENTATION OF GROUND MOUNTED SIGNS |
| 904.50 | MOUNTING OF TYPE 'D', 'E' AND 'F' SIGNS ON 'U' CHANNEL POSTS |

GENERAL NOTES

- SIGNS FURNISHED BY STATE
- SIGNING PLANS DO NOT INCLUDE TEMPORARY CONSTRUCTION SIGNING. SEE TRAFFIC CONTROL PLANS.
- ALL EXISTING SIGNS ON "U" CHANNEL POST WITHIN THE PROJECT LIMITS SHALL BE REMOVED AND DISPOSED OF UNLESS OTHERWISE NOTED ON PLANS.
- SEE ROADWAY PLANS FOR GUARD/GUIDE RAIL DETAILS.

SUMMARY OF QUANTITIES

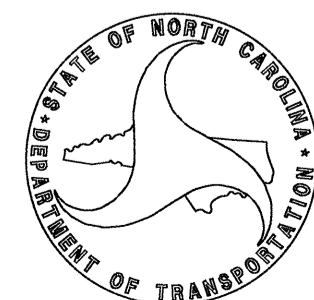
| ITEM NO. | DESC. NO. | SECT. NO. | ITEM DESCRIPTION | QUANTITY | UNIT |
|------------|-----------|-----------|------------------------------------|----------|------|
| 4072000000 | 903 | | SUPPORTS, 3 LB STEEL U-CHANNEL | 61 | L.F. |
| 4096000000 | 904 | | SIGN ERECTION, TYPE D | 2 | EA. |
| 4155000000 | 907 | | DISPOSAL OF SIGN SYSTEM, U-CHANNEL | 10 | EA. |

PROJECT NOTES

- | | |
|---|------------------------------------|
| 1 | DISPOSAL OF SIGN SYSTEM, U-CHANNEL |
|---|------------------------------------|

PLAN PREPARED BY: N.C.D.O.T. SIGNING AND DELINEATION UNIT

SUSAN B. KUNZ SIGNING & DELINEATION REGIONAL ENGINEER
GEORGE TERLIZZI SIGNING & DELINEATION DESIGN ENGINEER



| | | | | |
|--|--|--|-------------------------------------|--------------------|
| SIGN NUMBER: 301,302 TYPE: D QUANTITY: 2 SIGN WIDTH: 3'-0" HEIGHT: 2'-0" TOTAL AREA: 6.0 Sq.Ft. | BACKG COLOR: Green COPY COLOR: White SYMBOL X Y WID HT BORDER TYPE: FLUSH RECESS: 0" WIDTH: 0.75" RADII: 3" NO. Z BARS: LENGTH: | DESIGN BY: G. TERLIZZI PROJECT ID: B-4522 | CHECKED BY: SUSAN B. KUNZ DIV: 5 | DATE: Apr 13, 2011 |
|--|--|--|-------------------------------------|--------------------|

BORDER 5.95" 24.1" 5.95"
R=3"
TH=0.75"

USE NOTES: 1,2

- Legend and border (except those that are colored black) shall be direct applied Grade C sheeting.
- Background shall be Grade C reflective sheeting.

Spacing Factor is 1 unless specified otherwise

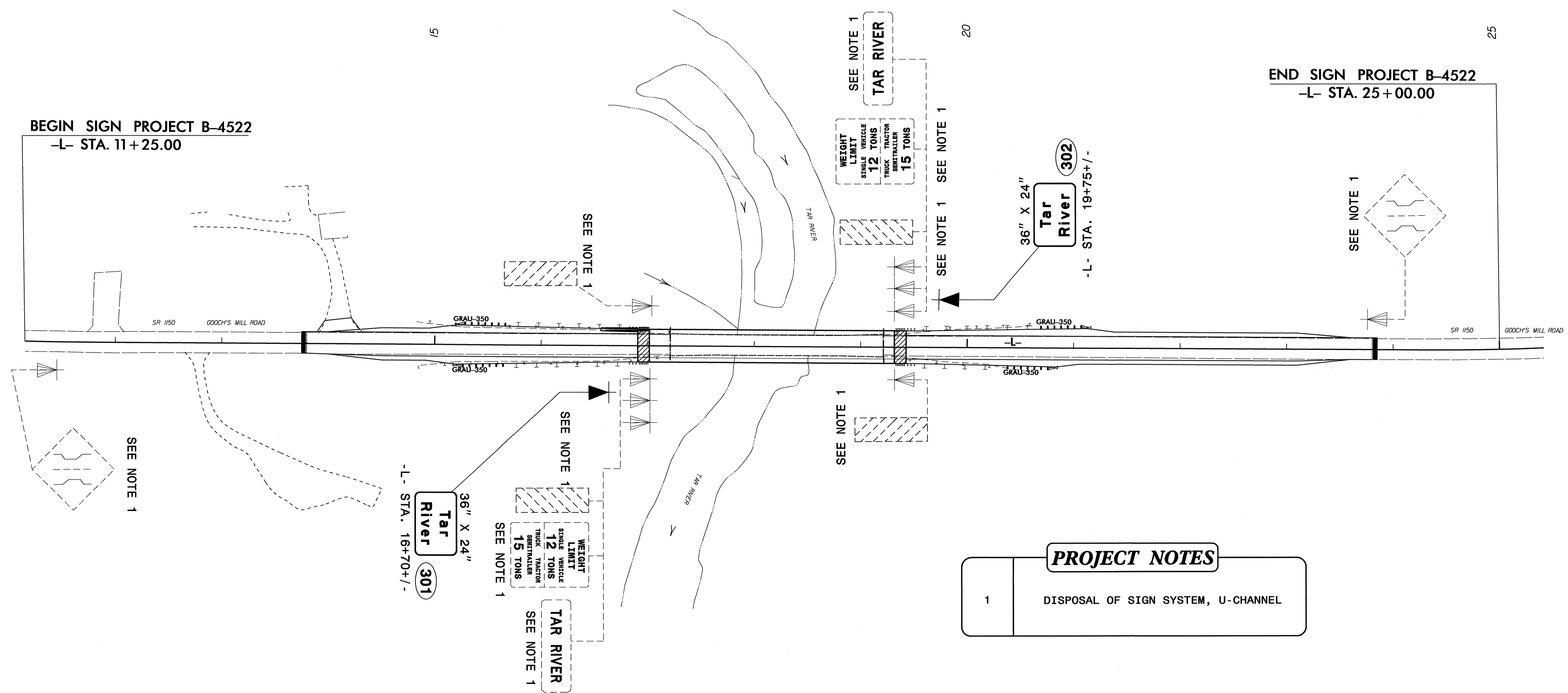
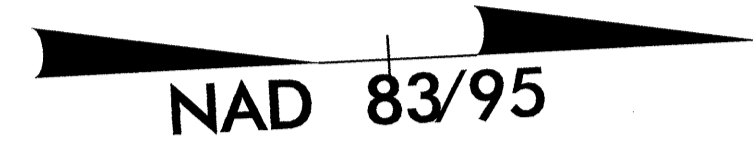
LETTER POSITIONS

| Letter spacings are to start of next letter | | | | | | | | | | Series/Size |
|---|------|-----|-----|-----|------|---|---|--|--|-------------|
| | T | a | r | | | | | | | Text Length |
| | 10.7 | 5.3 | 6.4 | 3 | 10.6 | | | | | EM 2000 |
| | | | | | | | | | | 14.7 |
| | | | | | | | | | | EM 2000 |
| | 6 | 6.5 | 2.9 | 5.8 | 5.8 | 3 | 6 | | | 24.1 |

FILENAME: B-4522_Sgn NORTH CAROLINA D.O.T. SIGN DETAIL

INDEX

| SHEET NO. | DESCRIPTION |
|-----------|-------------------|
| SIGN-1 | TITLE SHEET |
| SIGN-2 | SIGN DETAIL SHEET |



BEGIN SIGN PROJECT B-4522
-L- STA. 11+25.00

END SIGN PROJECT B-4522
-L- STA. 25+00.00

| PROJECT NOTES | |
|---------------|------------------------------------|
| 1 | DISPOSAL OF SIGN SYSTEM, U-CHANNEL |

**SIGN DETAIL SHEET
GOOCH'S MILL RD (SR 1150)**

07-JUN-2011 13:22
 P:\Projects\B-4522\Traffic\Signing\CADD\Signing Layout Plans\B-4522_Sgn.dgn
 User: r1221_01_12/17/11