

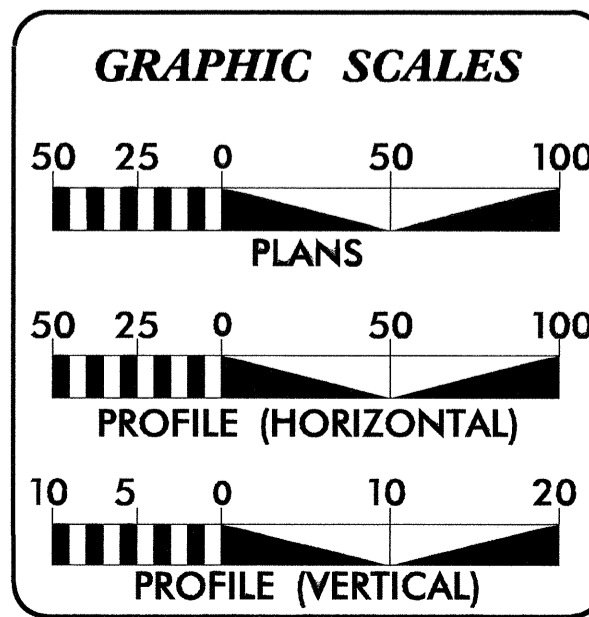
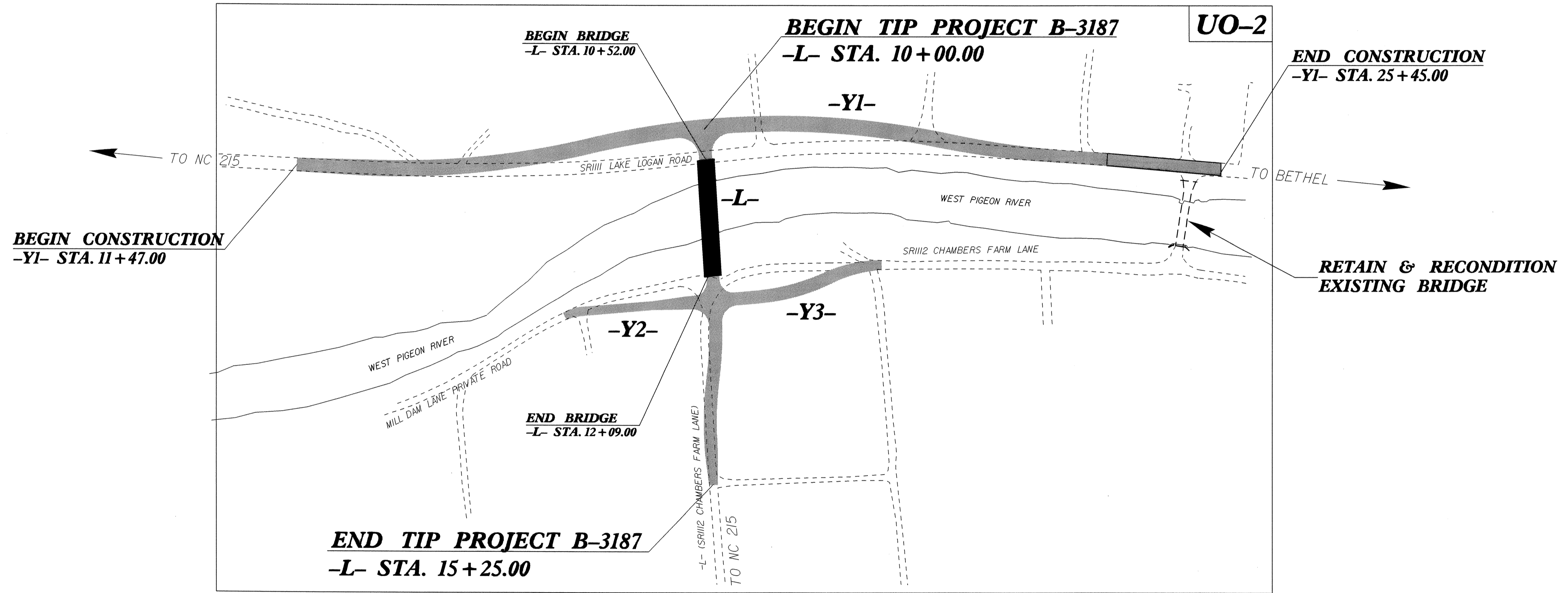
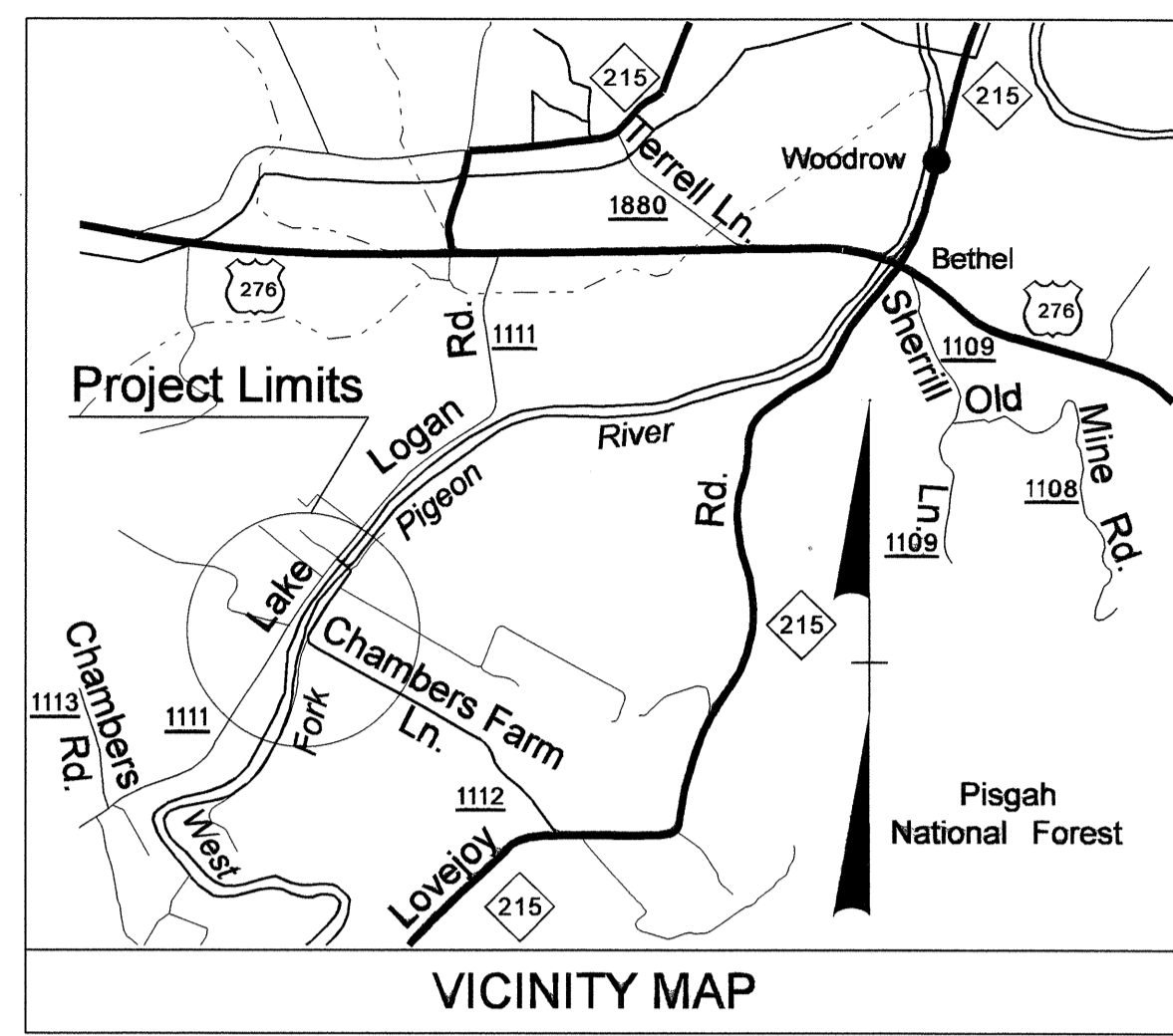
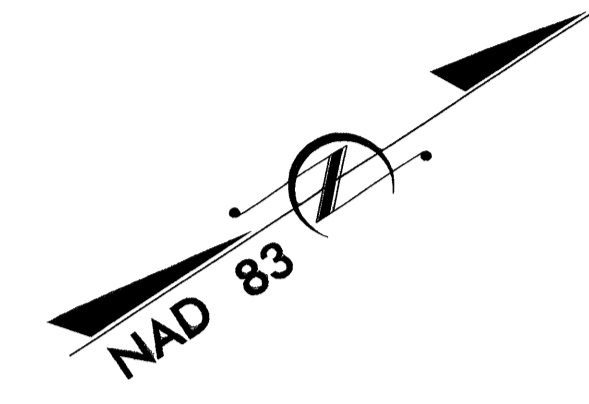
TIP PROJECT: B-3187

STATE OF NORTH CAROLINA
DIVISION OF HIGHWAYS

**UTILITIES BY OTHERS PLANS
HAYWOOD COUNTY**

**LOCATION: BRIDGE #79 ON SR 1112 (CHAMBERS FARM LANE)
OVER WEST FORK PIGEON RIVER**

TYPE OF WORK: RELOCATION OF POWER, TELEPHONE & CATV



INDEX OF SHEETS

SHEET NO.	DESCRIPTION
UO-1	TITLE SHEET
UO-2	UTILITIES BY OTHERS PLAN SHEET

- UTILITY OWNERS ON PROJECT**
- (1) TELEPHONE - AT&T
 - (2) POWER - HAYWOOD EMC
 - (3) CATV - MOUNTAIN CABLE

PREPARED IN THE OFFICE OF:
**DIVISION OF HIGHWAYS
UTILITIES ENGINEERING SECTION**

1555 MAIL SERVICES CENTER
RALEIGH, NC 27699-1555
PHONE (919) 250-4128
FAX (919) 250-4119

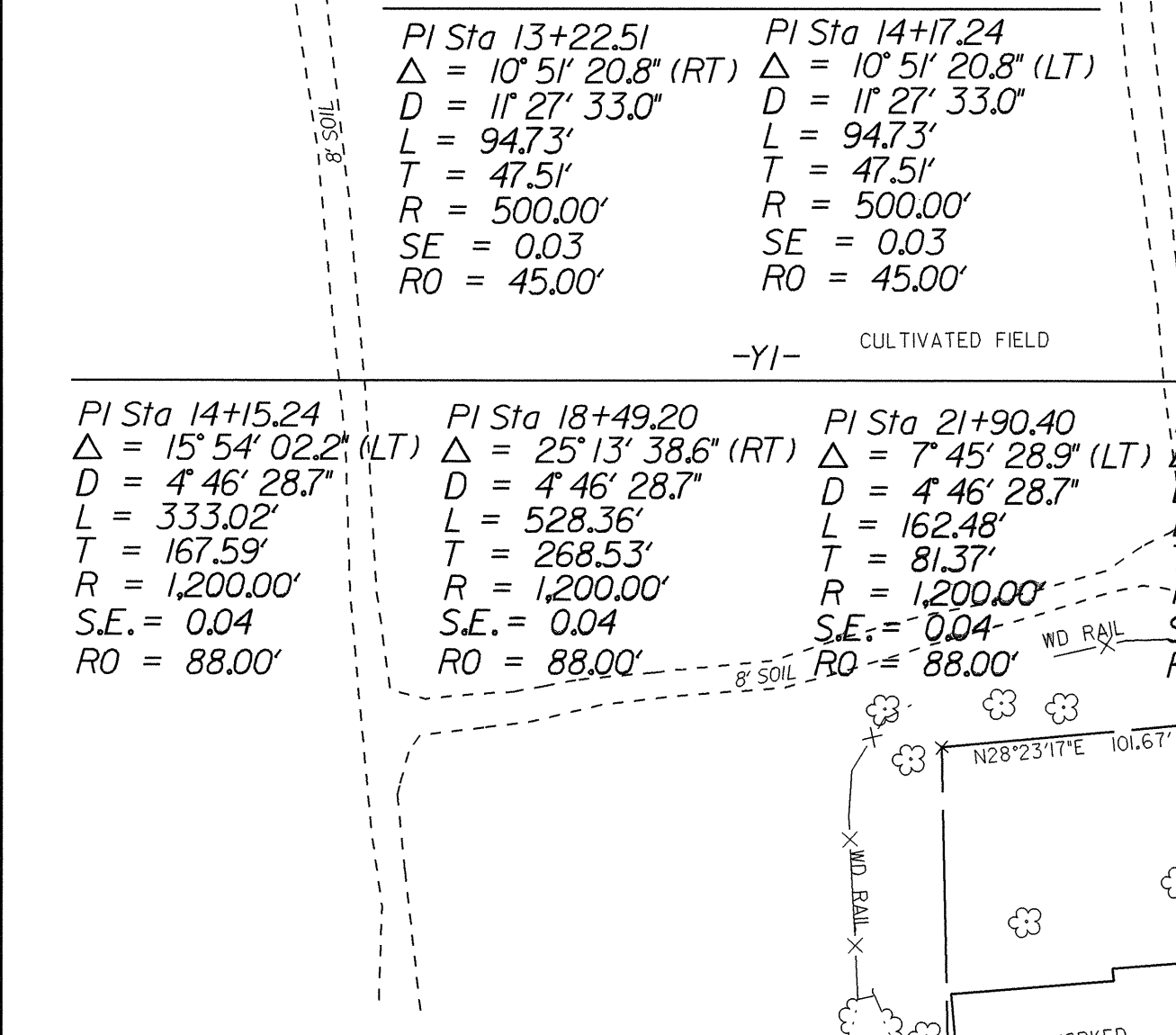
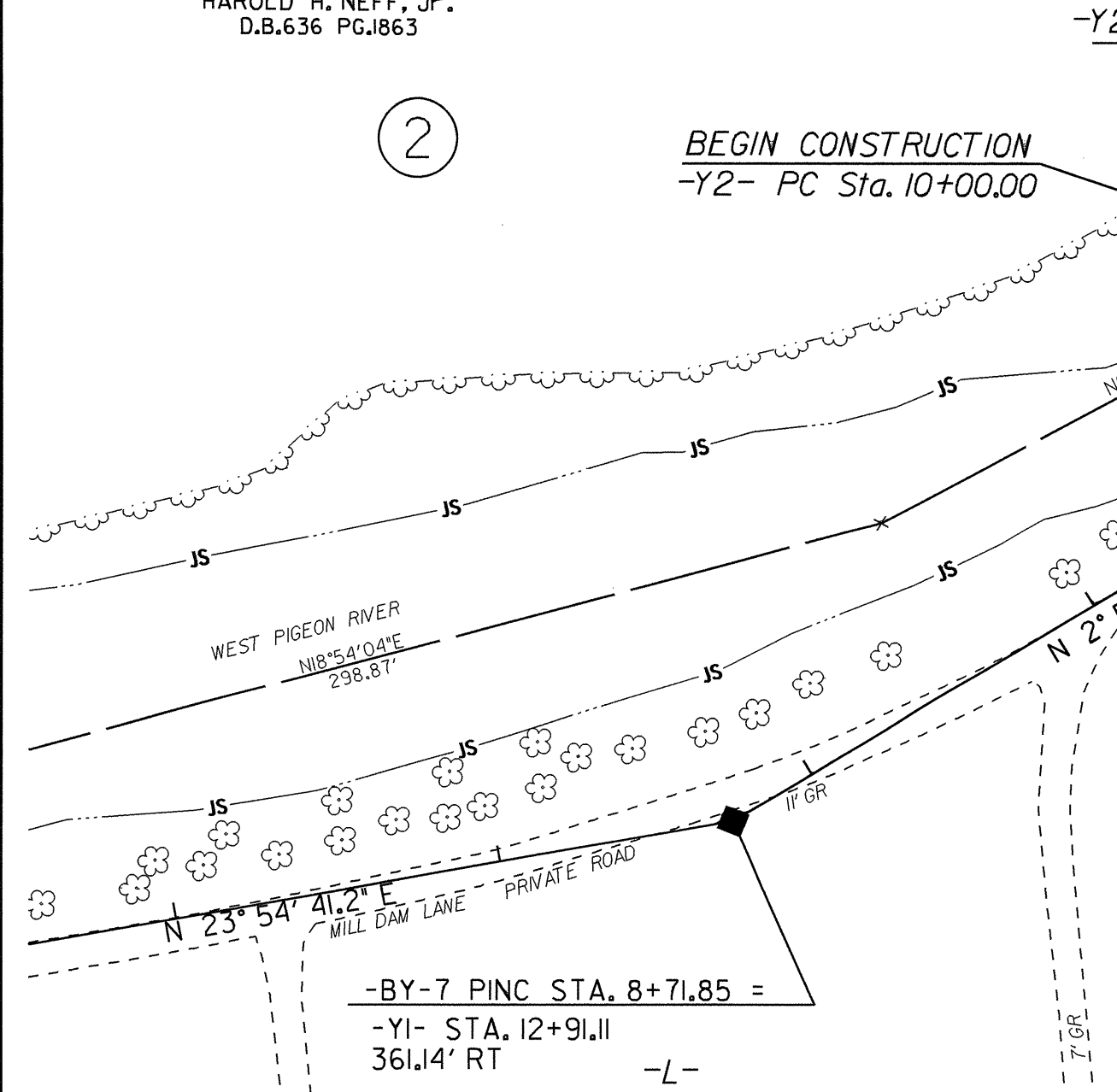
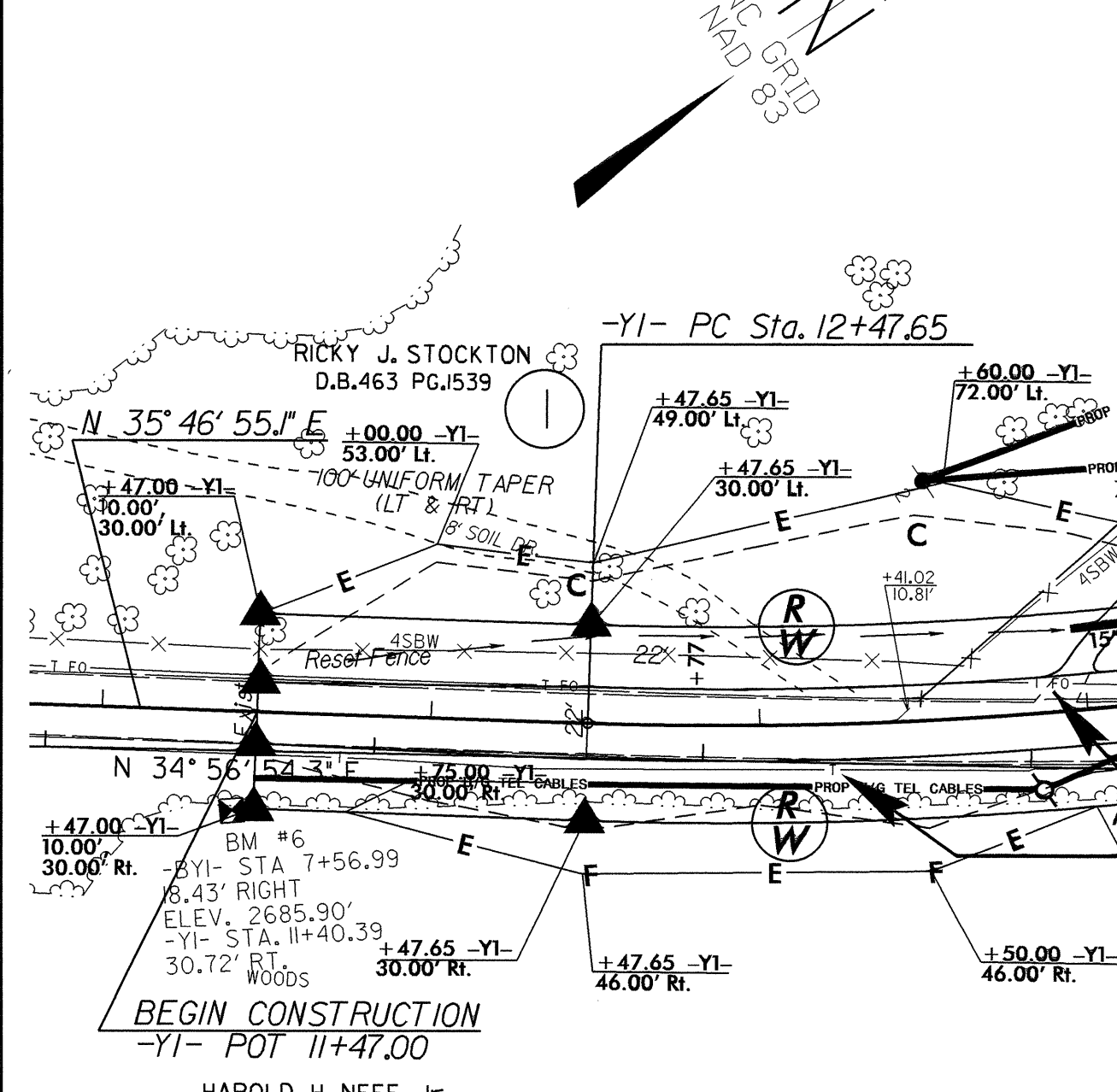
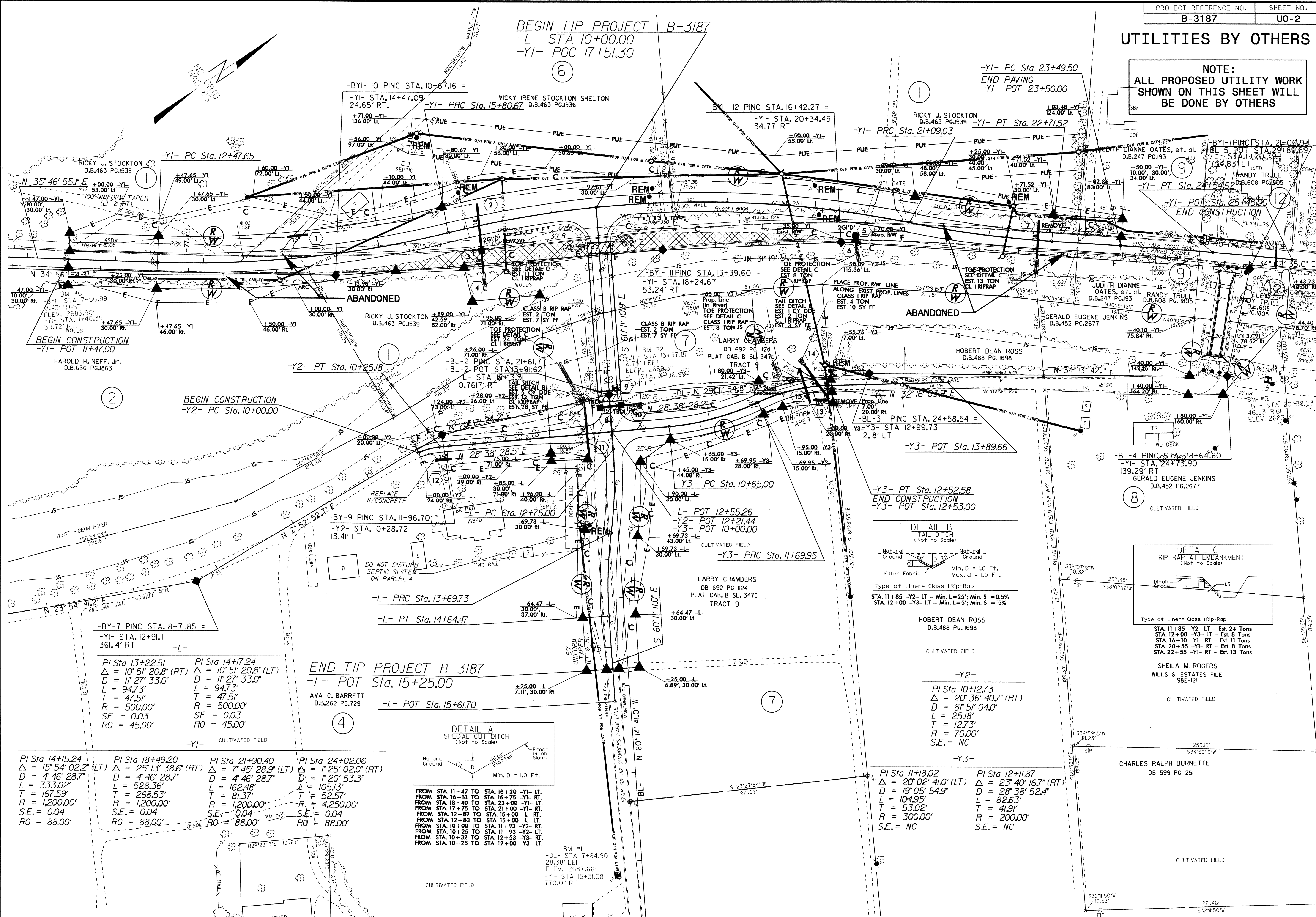
Roger Worthington, P.E. UTILITIES SECTION ENGINEER
Carl A. Barclay, P.E. UTILITIES SQUAD LEADER PROJECT ENGINEER
James E. Swinson UTILITIES PROJECT DESIGNER

UTILITIES BY OTHERS

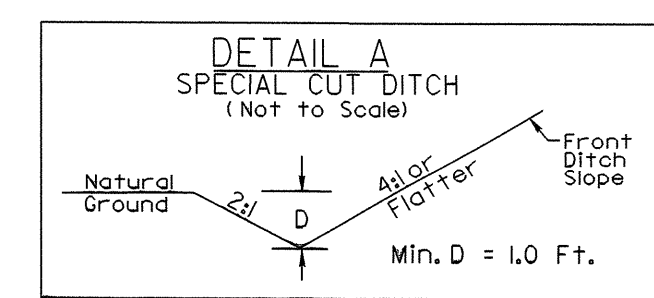
NOTE:
ALL PROPOSED UTILITY WORK SHOWN ON THIS SHEET WILL BE DONE BY OTHERS

BEGIN TIP PROJECT B-3187
-L- STA 10+00.00
-Y1- POC 17+51.30

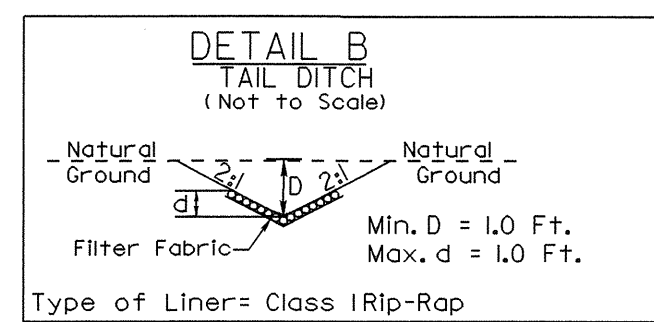
-Y1- PC Sta. 23+49.50
END PAVING
-Y1- POT 23+50.00



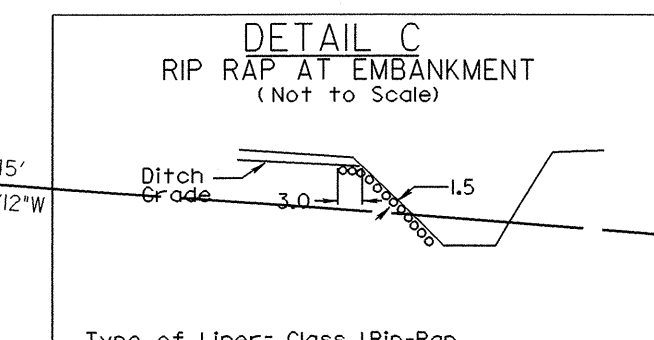
END TIP PROJECT B-3187
-L- POT Sta. 15+25.00
-L- POT Sta. 15+61.70



FROM STA. 11+47 TO STA. 18+20 -Y1- LT.
FROM STA. 16+13 TO STA. 16+75 -Y1- RT.
FROM STA. 18+40 TO STA. 23+00 -Y1- LT.
FROM STA. 17+75 TO STA. 21+00 -Y1- RT.
FROM STA. 12+82 TO STA. 15+00 -L- RT.
FROM STA. 12+83 TO STA. 15+00 -L- LT.
FROM STA. 10+00 TO STA. 11+93 -Y2- RT.
FROM STA. 10+25 TO STA. 12+53 -Y3- RT.
FROM STA. 10+25 TO STA. 12+00 -Y3- LT.



STA. 11+85 -Y2- LT - Min. L=25'; Min. S = 0.5%
STA. 12+00 -Y3- LT - Min. L=5'; Min. S = 15%



STA. 11+85 -Y2- LT - Est. 24 Tons
STA. 12+00 -Y3- LT - Est. 8 Tons
STA. 16+10 -Y1- RT - Est. 11 Tons
STA. 20+55 -Y1- RT - Est. 8 Tons
STA. 22+55 -Y1- RT - Est. 13 Tons

SHEILA M. ROGERS
WILLS & ESTATES FILE
98E-121

CHARLES RALPH BURNETTE
DB 599 PG 251

5/14/09
29-NOV-2010 09:29
R:\Users\jls\Documents\B-3187-utl.uo2-ps-h.dgn