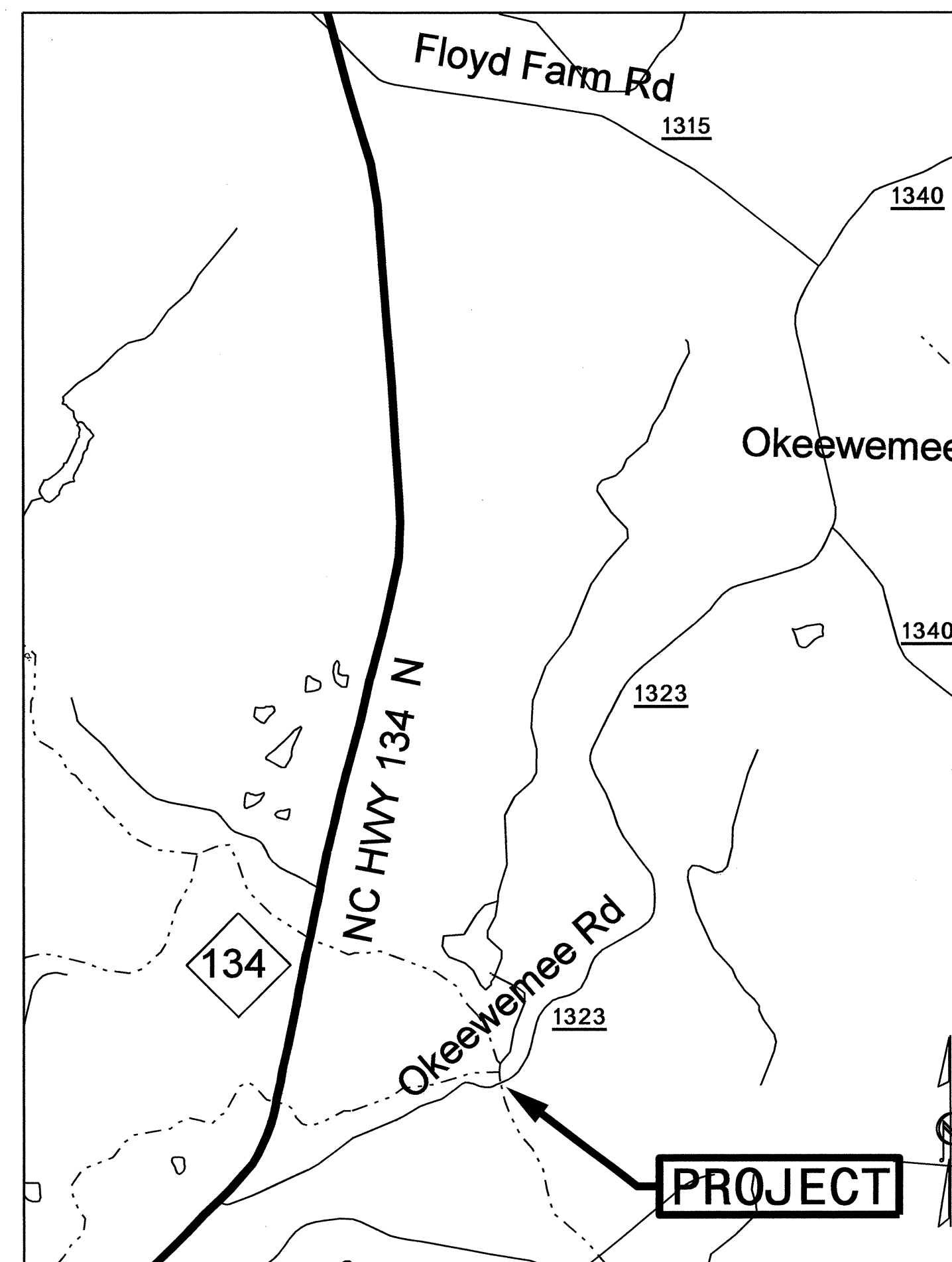
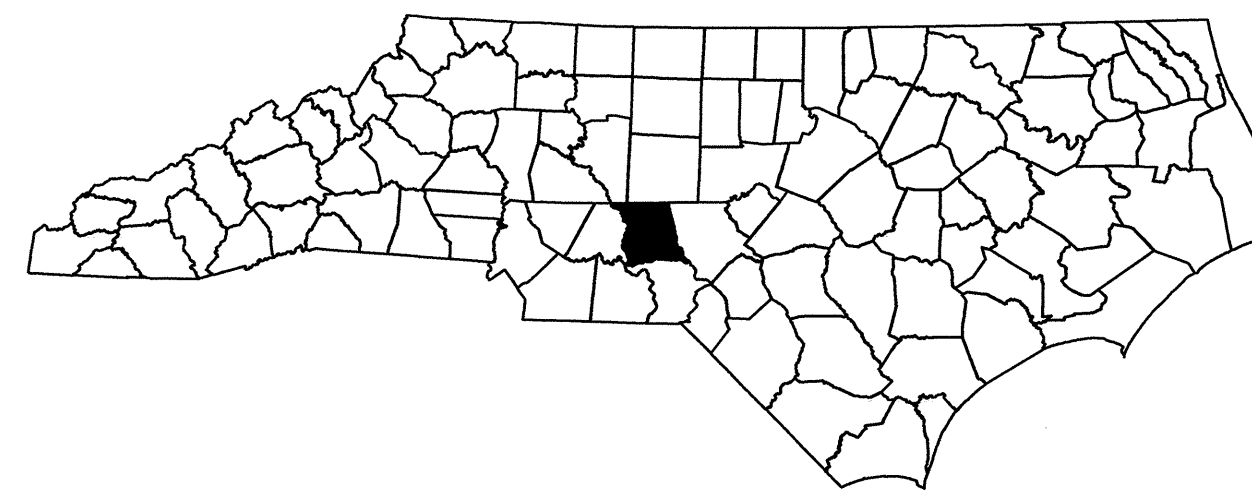


STATE OF NORTH CAROLINA
DIVISION OF HIGHWAYS

TRANSPORTATION MANAGEMENT PLAN

MONTGOMERY COUNTY



VICINITY MAP

LOCATION: BRIDGE NO. 121 OVER
DENSONS CREEK ON
SR 1323 (OKEEWEMEE RD)

TYPE OF WORK: GRADING, PAVING,
DRAINAGE, AND STRUCTURE

02-MAY-2011 10:20 \\dot\dfsroot\01\pfc\j\TIPProjects\B\4582\TrafficControl\TCP\B-4582 TMP-1.dgn scmillr AT TE248375

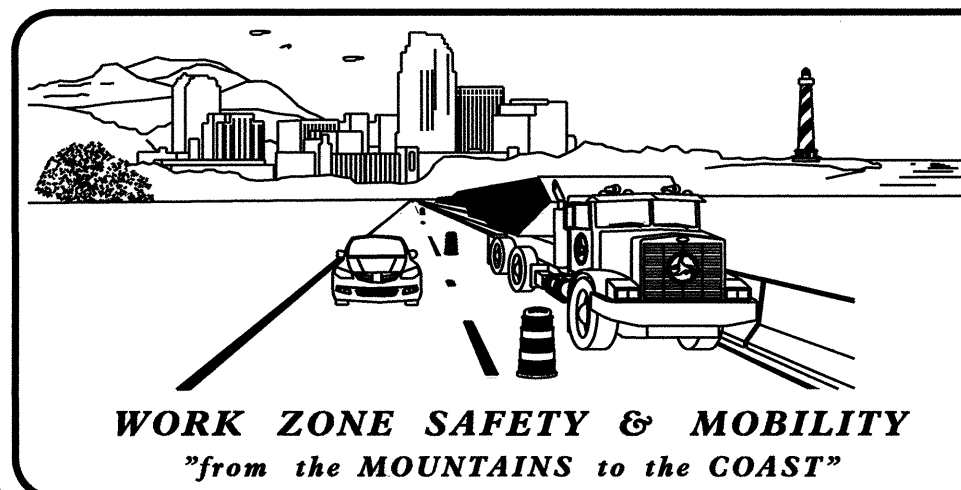
INDEX OF SHEETS

SHEET NO.	TITLE
TMP-1	TITLE SHEET AND INDEX OF SHEETS
TMP-1A	LIST OF APPLICABLE ROADWAY STANDARD DRAWINGS AND LEGEND
TMP-1B	TRANSPORTATION OPERATIONS PLAN: (MANAGEMENT STRATEGIES, GENERAL NOTES, AND LOCAL NOTES)
TMP-2	OFF-SITE DETOUR
TMP-3	ROAD CLOSURE
SD-1	SIGN DESIGN

SHEET NO.
TMP-1

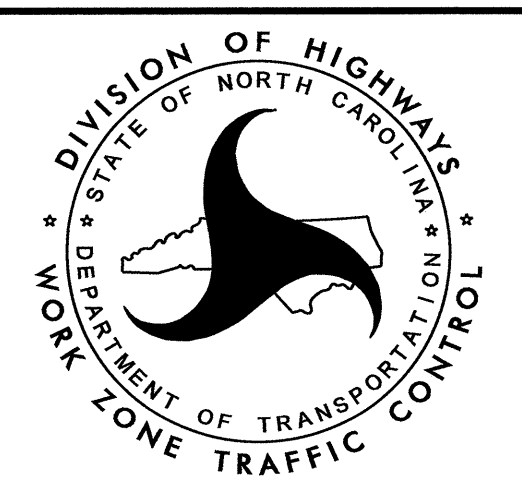
B-4582

TIP PROJECT:



N.C.D.O.T. WORK ZONE TRAFFIC CONTROL
1561 MAIL SERVICE CENTER (MSC) RALEIGH, NC 27699-1561
750 N. GREENFIELD PARKWAY, GARNER, NC 27529 (DELIVERY)
PHONE: (919) 773-2800 FAX: (919) 771-2745

J. S. BOURNE, P.E. STATE TRAFFIC MANAGEMENT ENGINEER
J. S. KITE, P.E. TRAFFIC CONTROL PROJECT ENGINEER
D. W. BISSETTE, P.E. TRAFFIC CONTROL PROJECT DESIGN ENGINEER
S. D. MILLER, P.E. TRAFFIC CONTROL DESIGN ENGINEER



APPROVED: *Steven Miller*
DATE: 5-2-11

SEAL

ROADWAY STANDARD DRAWINGS

THE FOLLOWING ROADWAY STANDARDS AS SHOWN IN "ROADWAY STANDARD DRAWINGS" - PROJECT SERVICES UNIT - N.C. DEPARTMENT OF TRANSPORTATION - RALEIGH, N.C., DATED JULY 2006 ARE APPLICABLE TO THIS PROJECT AND BY REFERENCE HEREBY ARE CONSIDERED A PART OF THESE PLANS:

<u>STD. NO.</u>	<u>TITLE</u>
1101.03	TEMPORARY ROAD CLOSURES
1101.05	WORK ZONE VEHICLE ACCESSES
1101.11	TRAFFIC CONTROL DESIGN TABLES
1110.01	STATIONARY WORK ZONE SIGNS
1145.01	BARRICADES

LEGEND

GENERAL

- DIRECTION OF TRAFFIC FLOW
- DIRECTION OF PEDESTRIAN TRAFFIC FLOW
- EXIST. PVMT.
- NORTH ARROW
- PROPOSED PVMT.

- WORK AREA
- REMOVAL
- USER DEFINED (IF NEEDED)
- USER DEFINED (IF NEEDED)

TRAFFIC CONTROL DEVICES

- BARRICADE (TYPE III)
- CONE
- DRUM SKINNY DRUM TUBULAR MARKER
- TEMPORARY CRASH CUSHION
- FLASHING ARROW PANEL (TYPE C)
- FLAGGER
- LAW ENFORCEMENT
- TRUCK MOUNTED IMPACT ATTENUATOR (TMIA)
- CHANGEABLE MESSAGE SIGN

TEMPORARY SIGNING

- PORTABLE SIGN
- STATIONARY SIGN
- STATIONARY OR PORTABLE SIGN

SIGNALS

- EXISTING PROPOSED TEMPORARY

PAVEMENT MARKINGS

- EXISTING LINES
- TEMPORARY LINES

PAVEMENT MARKERS

- CRYSTAL/CRYSTAL
- CRYSTAL/RED
- YELLOW/YELLOW

PAVEMENT MARKING SYMBOLS

- PAVEMENT MARKING SYMBOLS

02-MAY-2011 10:26 \\Def\dfs\proj\01\Proj\TIP\Projects-B\B4582\TrafficControl\TCP\B-4582 TMP-1A.dgn scmler AT TE248375

APPROVED:	DATE: 5-2-11		
		ROADWAY STANDARD DRAWINGS & LEGEND	

MANAGEMENT STRATEGIES

- CLOSE THE ROAD.
- DETOUR TRAFFIC OFF SITE.

LOCAL NOTES

1. NOTIFY MONTGOMERY COUNTY EMERGENCY SERVICES AND PUBLIC SCHOOLS AT LEAST ONE MONTH PRIOR TO ROAD CLOSURE.
2. ALL SIGN SPACING DIMENSIONS ARE APPROXIMATE, FIELD ADJUST AS NECESSARY OR AS DIRECTED BY THE ENGINEER.
3. REAPPLY PAVEMENT MARKINGS BEYOND CONSTRUCTION LIMITS IF NEEDED TO REPAIR DAMAGE AND/OR TRACKING FROM CONSTRUCTION.

GENERAL NOTES

CHANGES MAY BE REQUIRED WHEN PHYSICAL DIMENSIONS IN THE DETAIL DRAWINGS, STANDARD DETAILS, AND ROADWAY DETAILS ARE NOT ATTAINABLE TO MEET FIELD CONDITIONS OR RESULT IN DUPLICATE OR UNDESIRED OVERLAPPING OF DEVICES. MODIFICATION MAY INCLUDE: MOVING, SUPPLEMENTING, COVERING, OR REMOVAL OF DEVICES AS DIRECTED BY THE ENGINEER.

THE FOLLOWING GENERAL NOTES APPLY AT ALL TIMES FOR THE DURATION OF THE CONSTRUCTION PROJECT EXCEPT WHEN OTHERWISE NOTED IN THE PLAN OR DIRECTED BY THE ENGINEER.

PAVEMENT EDGE DROP OFF REQUIREMENTS

- A) BACKFILL AT A 6:1 SLOPE UP TO THE EDGE AND ELEVATION OF EXISTING PAVEMENT IN AREAS ADJACENT TO AN OPENED TRAVEL LANE THAT HAS AN EDGE OF PAVEMENT DROP-OFF AS FOLLOWS:

BACKFILL DROP-OFFS THAT EXCEED 2 INCHES ON ROADWAYS WITH POSTED SPEED LIMITS OF 45 MPH OR GREATER.

BACKFILL DROP-OFFS THAT EXCEED 3 INCHES ON ROADWAYS WITH POSTED SPEED LIMITS LESS THAN 45 MPH.

BACKFILL WITH SUITABLE COMPACTED MATERIAL, AS APPROVED BY THE ENGINEER, AT NO EXPENSE TO THE DEPARTMENT.

TRAFFIC PATTERN ALTERATIONS

- B) NOTIFY THE ENGINEER TWENTY ONE (21) CALENDAR DAYS PRIOR TO ANY TRAFFIC PATTERN ALTERATION.

SIGNING

- C) PROVIDE PERMANENT SIGNING.
- D) PROVIDE DETOUR SIGNING WITHIN AND OFF THE PROJECT LIMITS.
- E) COVER OR REMOVE ALL DETOUR SIGNS WITHIN AND OFF THE PROJECT LIMITS WHEN A DETOUR IS NOT IN OPERATION.
- F) ENSURE ALL NECESSARY SIGNING IS IN PLACE PRIOR TO ALTERING ANY TRAFFIC PATTERN.


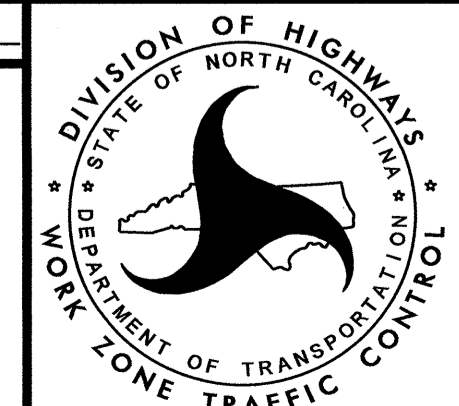
TRAFFIC CONTROL DEVICES

- G) PLACE TYPE III BARRICADES, WITH "ROAD CLOSED" SIGN R11-2 ATTACHED, OF SUFFICIENT LENGTH TO CLOSE ENTIRE ROADWAY.

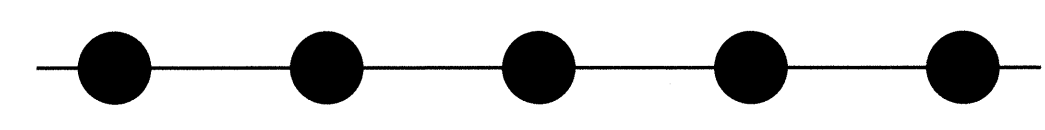
PAVEMENT MARKINGS AND MARKERS

- H) INSTALL PAVEMENT MARKINGS AND PAVEMENT MARKERS ON THE FINAL SURFACE AS SHOWN IN THE PAVEMENT MARKING PLAN.

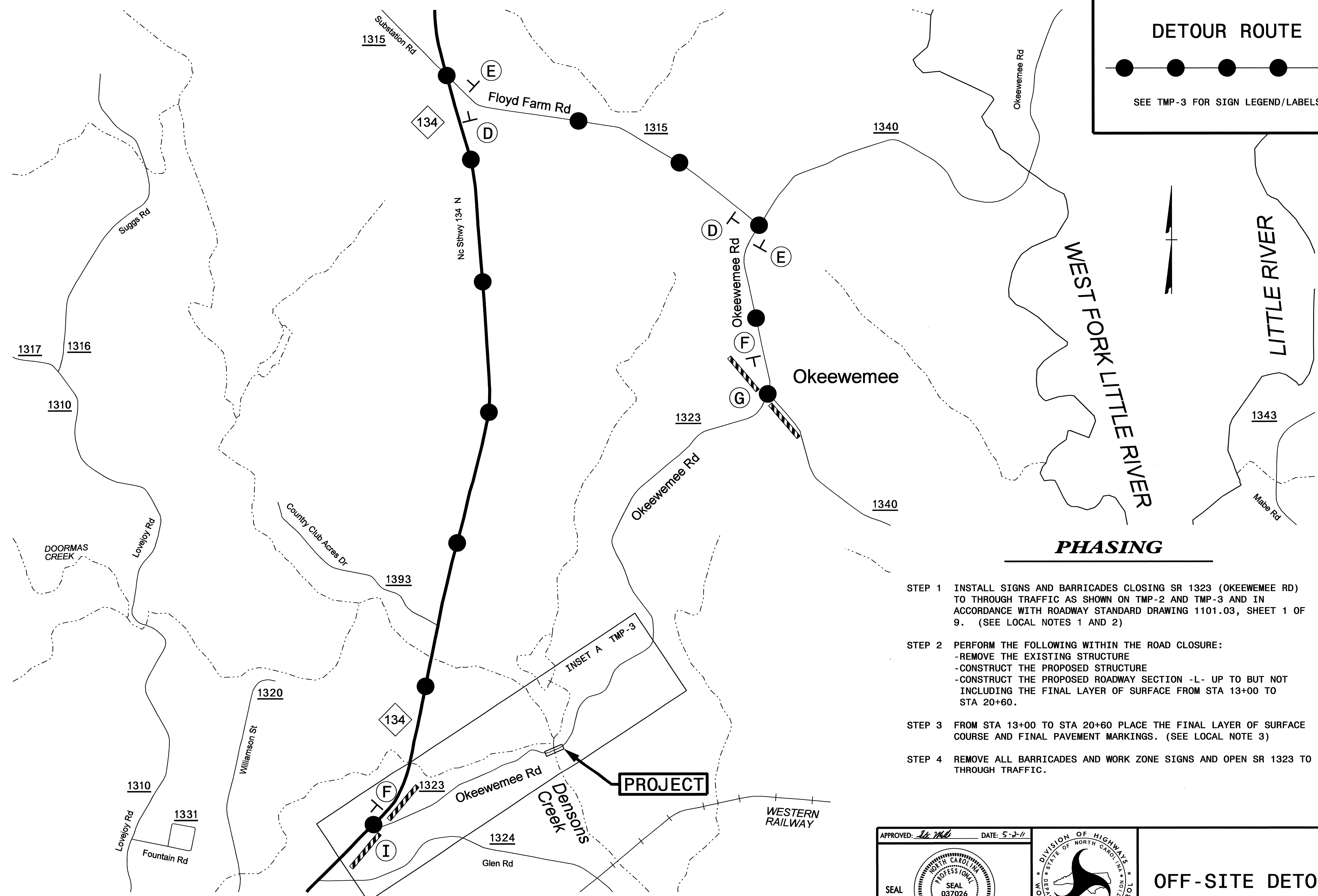
02-MAY-2011 14:25 \\Dof\dfsroot\01\Proj\TIP\Projects-B\B4582\TrafficControl\TCP\B-4582 TMP-1B.dgn scmillar AT TE248375

APPROVED: <i>Stu Miller</i> DATE: 5-2-11			<h1 style="margin: 0;">TRANSPORTATION OPERATIONS PLAN</h1>
--	---	---	--

DETOUR ROUTE



SEE TMP-3 FOR SIGN LEGEND/LABELS

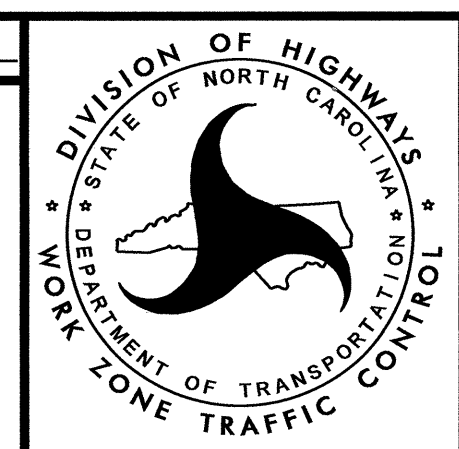


PHASING

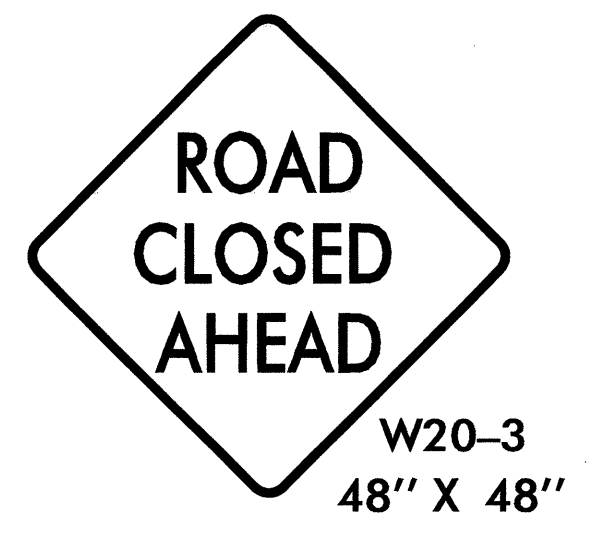
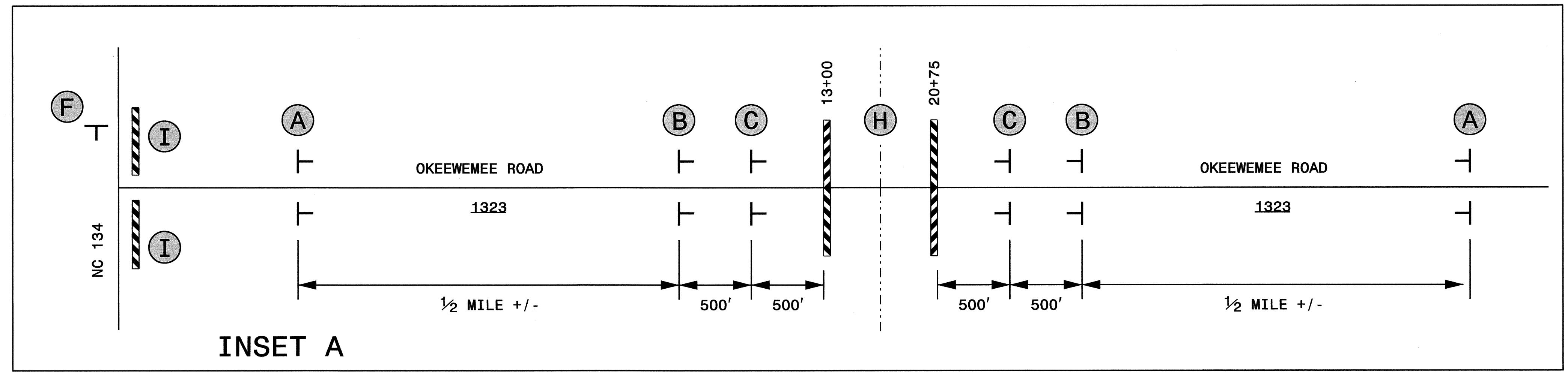
- STEP 1 INSTALL SIGNS AND BARRICADES CLOSING SR 1323 (OKEEWEMEE RD) TO THROUGH TRAFFIC AS SHOWN ON TMP-2 AND TMP-3 AND IN ACCORDANCE WITH ROADWAY STANDARD DRAWING 1101.03, SHEET 1 OF 9. (SEE LOCAL NOTES 1 AND 2)
- STEP 2 PERFORM THE FOLLOWING WITHIN THE ROAD CLOSURE:
 - REMOVE THE EXISTING STRUCTURE
 - CONSTRUCT THE PROPOSED STRUCTURE
 - CONSTRUCT THE PROPOSED ROADWAY SECTION -L- UP TO BUT NOT INCLUDING THE FINAL LAYER OF SURFACE FROM STA 13+00 TO STA 20+60.
- STEP 3 FROM STA 13+00 TO STA 20+60 PLACE THE FINAL LAYER OF SURFACE COURSE AND FINAL PAVEMENT MARKINGS. (SEE LOCAL NOTE 3)
- STEP 4 REMOVE ALL BARRICADES AND WORK ZONE SIGNS AND OPEN SR 1323 TO THROUGH TRAFFIC.

02-MAY-2011 11:30
 \\dot\cfrsroot\01\PRJ\TIP\Projects-B\4582\TrafficControl\TCP-B-4582 TMP-2.dgn
 scmilller AT TE248375

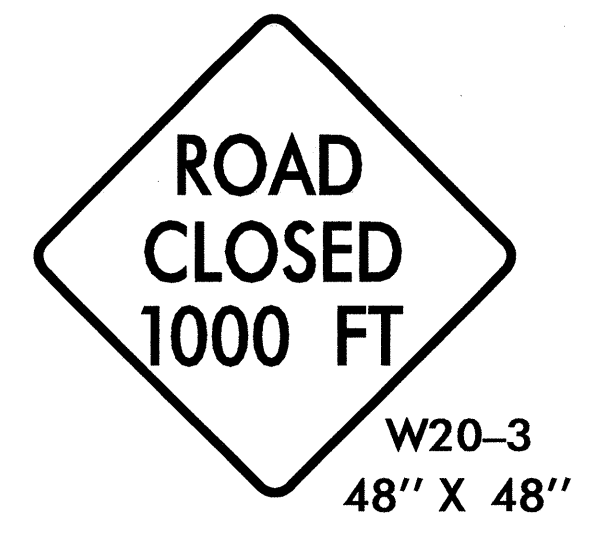
APPROVED: *St. Miller* DATE: 5-2-11



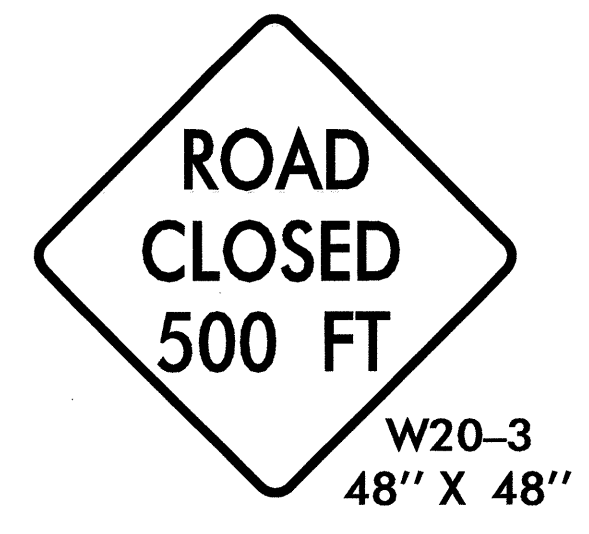
OFF-SITE DETOUR



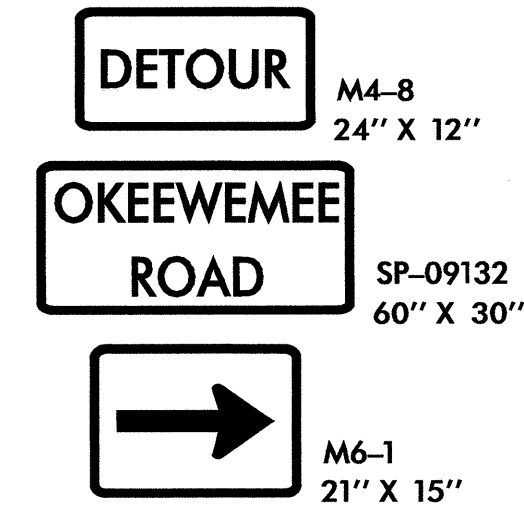
(4 EA)



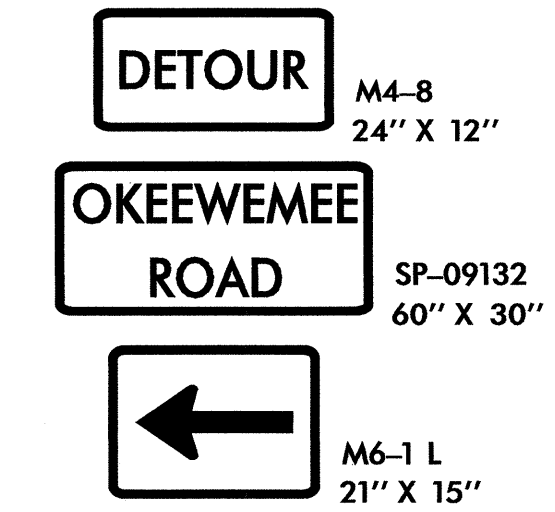
(4 EA)



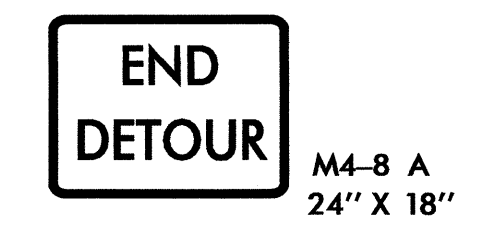
(4 EA)



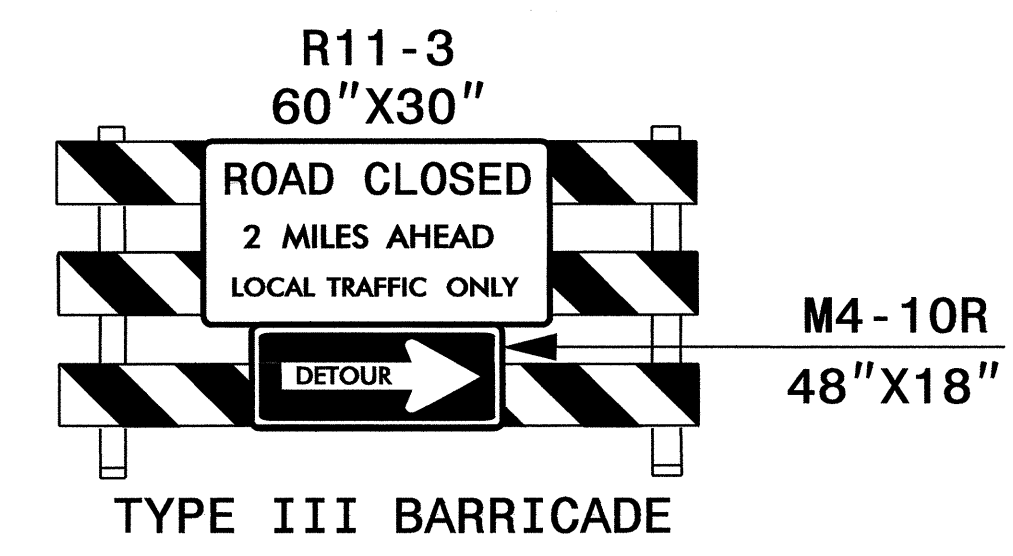
(2 EA)



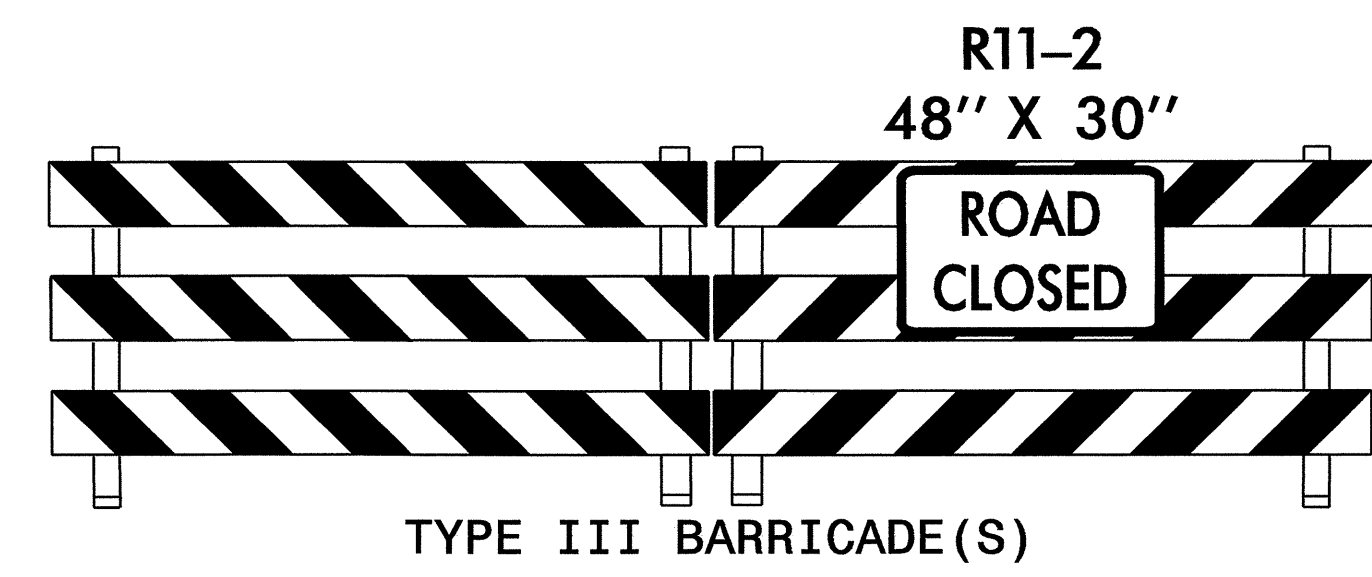
(2 EA)



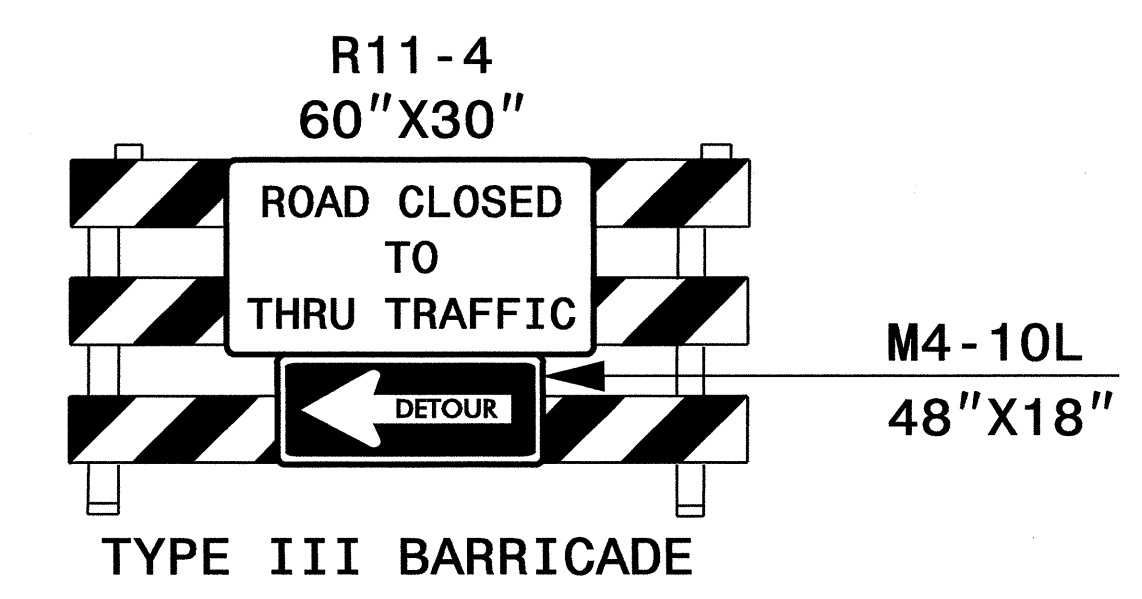
(2 EA)



(2 EA)



(2 SETS*)



(2 EA)

*BARRICADES USED TO CLOSE A ROADWAY SHALL EXTEND ACROSS THE ENTIRE ROADWAY. WHERE LOCAL TRAFFIC MUST BE MAINTAINED, THEY MAY BE PLACED IN A STAGGERED POSITION.

02-MAY-2011 11:24 \\dot\dfsroot\01\Proj\TIP\Projects-B\4582\TrafficControl\B-4582 TMP-3.dgn scmillert AT TE248375

APPROVED: *Stu Mill* DATE: 5-2-11

ROAD CLOSURE