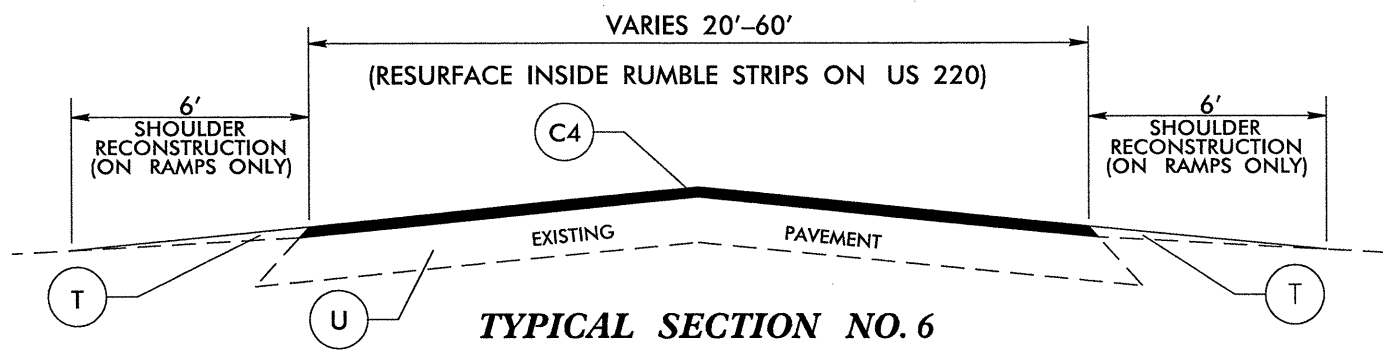
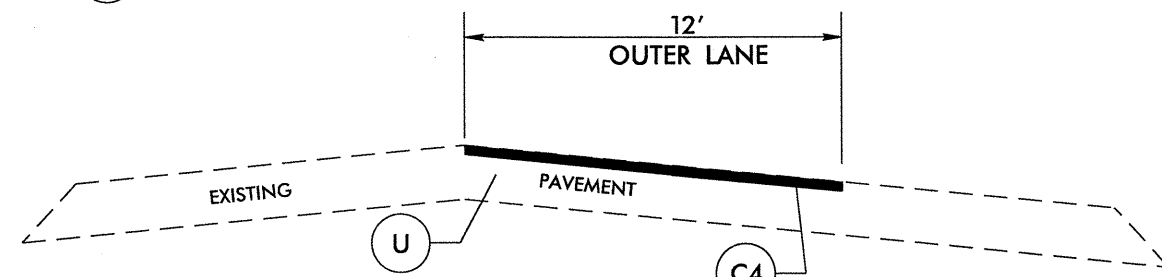


MONTGOMERY COUNTY

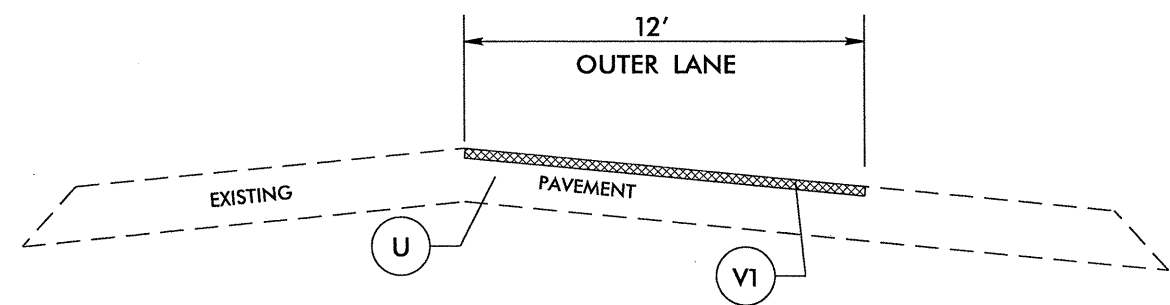
MONTGOMERY COUNTY TYPICAL SECTIONS



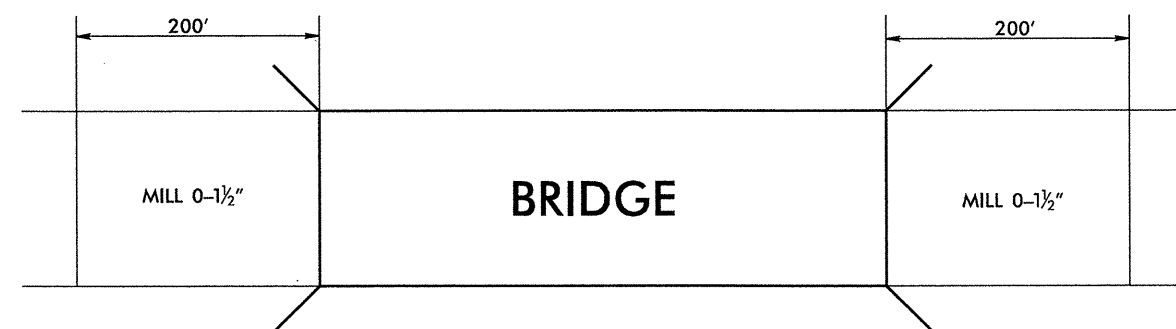
TYPICAL SECTION NO. 6



TYPICAL SECTION NO. 7

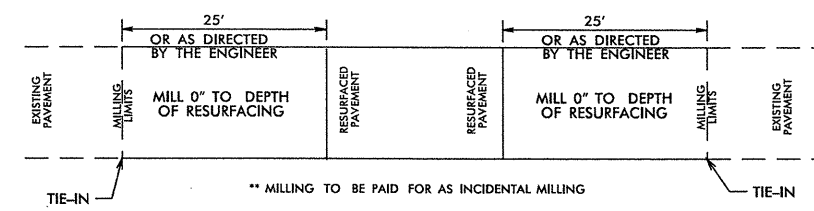


TYPICAL SECTION NO. 8

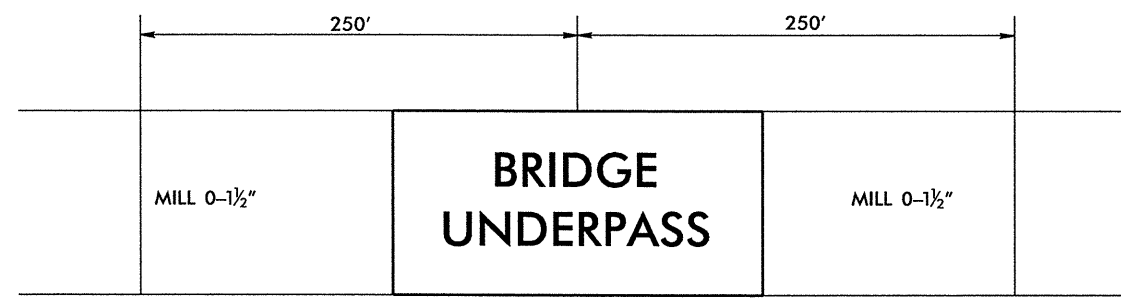


TYPICAL SECTION NO. 10

** MILLING TO BE PAID FOR AS INCIDENTAL MILLING



PAVEMENT TIE-IN DETAIL



TYPICAL SECTION NO. 9

** MILLING TO BE PAID FOR AS INCIDENTAL MILLING

PAVEMENT SCHEDULE

C1	PROP. APPROX. 1.5" ASPHALT CONCRETE SURFACE COURSE, TYPE S9.5B, AT AN AVERAGE RATE OF 168 LBS. PER SQ. YD.
C2	PROP. APPROX. 1.5" ASPHALT CONCRETE SURFACE COURSE, TYPE SF9.5A, AT AN AVERAGE RATE OF 165 LBS. PER SQ. YD.
C3	PROP. APPROX. 2" ASPHALT CONCRETE SURFACE COURSE, TYPE S9.5B, AT AN AVERAGE RATE OF 224 LBS. PER SQ. YD.
C4	PROP. APPROX. 1.5" ASPHALT CONCRETE SURFACE COURSE, TYPE S9.5C, AT AN AVERAGE RATE OF 168 LBS. PER SQ. YD.
SS	ASPHALT SURFACE TREATMENT, STRAIGHT SEAL (78M)
T	EARTH MATERIAL.
U	EXISTING PAVEMENT.
V1	MILLING 1 1/2" IN DEPTH.

PROJECT NO.	SHEET NO.	TOTAL NO.
8CR.10621.17, 8CR.20621.17	4	7

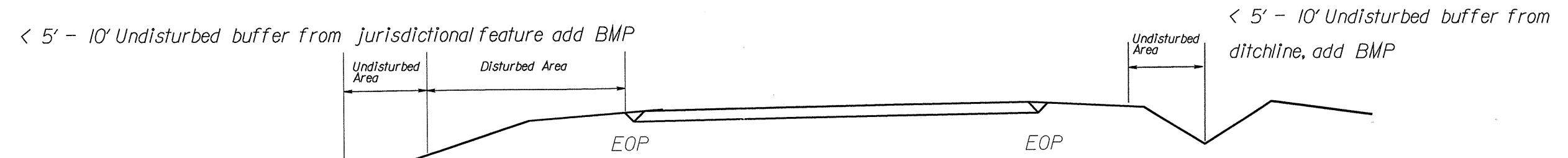
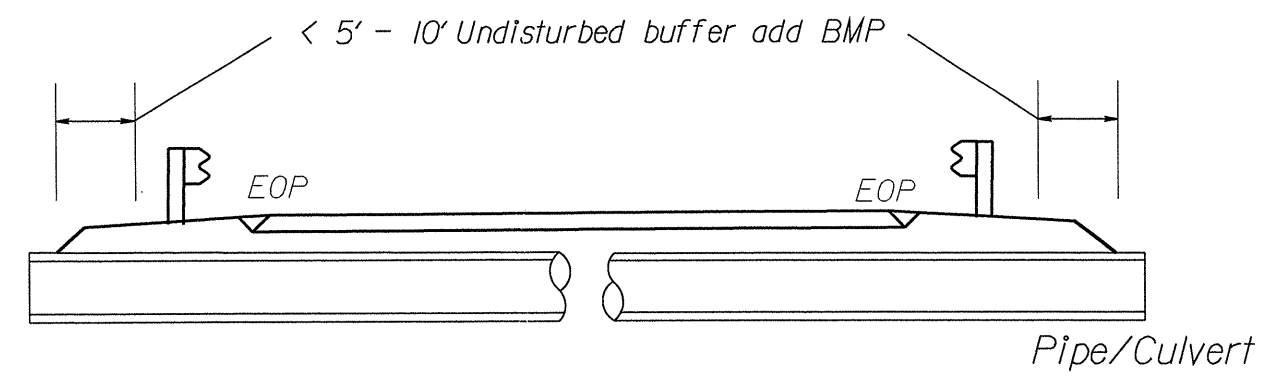
SUMMARY OF QUANTITIES

PROJECT NO.	COUNTY	MAP NO.	ROUTE	DESCRIPTION	TYP	FINAL SURFACE TESTING REQUIRED	LENGTH MI	WIDTH FT	BORROW EXCAVATION CY	INCIDENTAL STONE BASE TONS	SHOULDER RECONSTRUCTION SMI	1 1/2" MILLING SY	INCIDENTAL MILLING SY	SURFACE COURSE, S9.5B TONS	SURFACE COURSE, S9.5C TONS	SURFACE COURSE, SF9.5A TON	PG 64-22 PLANT MIX TONS	PG 70-22 PLANT MIX TONS	ASPHALT SURFACE TREATMENT, STRAIGHT SEAL SY	ADJUSTMENT OF MANHOLES EA	ADJUSTMENT OF METER OR VALVE BOX EA	TEMP. SILT FENCE LF	EROSION CONTROL STONE, CLASS B TON	SEDIMENT CONTROL STONE TON	TEMP. MULCHING ACR	MATTING (EROSION CONTROL) SY	1/4" HARDWARE CLOTH LF	WATTLE LF	SEED & MULCHING AC	SEED FOR REPAIR SEEDING LB	FERTILIZER FOR REPAIR SEEDING TON				
8CR.10621.17	Montgomery	1	US 220 NB	FROM NC 24/27 OFF RAMP TO RANDOLPH COUNTY	6,7,8,9,10	YES	10.6	24	120		3.00	92,120	1,000		22,095			1,326				300	75	75	3.00	20	150.00	50	3.63	150	0.75				
TOTAL FOR MAP NO. 1							10.6		120		3.00	92,120	1,000		22,095			1,326				300	75	75	3.00	20	150.00	50	3.63	150	0.75				
		2	US 220 SB	FROM RANDOLPH COUNTY TO END OF EXIT RAMP AT NC 24/27	6,7,8,9,10	YES	10.6	24	120		3.00	92,120	1,000		22,040			1,322				300	75	75	3.00	20	150.00	50	3.63	150	0.75				
TOTAL FOR MAP NO. 2							10.6		120		3.00	92,120	1,000		22,040			1,322					300	75	75	3.00	20	150.00	50	3.63	150	0.75			
TOTAL FOR PROJ NO. 8CR.10621.17							21.2		240		6.00	184,240	2,000		44,135			2,648					600	150	150	6.00	40	300.00	100	7.26	300	1.50			
8CR.20621.17	Montgomery	3	SR 1588	FROM SR 1509 TO END PAVEMENT	2	NO	0.67	20	50	140	1.34		100	925			55					60	15	15	0.60	10	30.00	20	0.80	30	0.25				
TOTAL FOR MAP NO. 3							0.67		50	140	1.34		100	925			55								60	15	15	0.60	10	30.00	20	0.80	30	0.25	
		4	SR 1003	FROM RICHMOND COUNTY TO NC 73	1,3	NO	1.84	22	150	75	3.68		450			2,100	137		23,748			184	46	46	1.84	20	92.00	30	2.23	100	0.50				
TOTAL FOR MAP NO. 4							1.84		150	75	3.68		450			2,100	137		23,748						184	46	46	1.84	20	92.00	30	2.23	100	0.50	
		5	SR 1002	FROM MOORE COUNTY TO US 220A	4,5	NO	2.54	22-64	100	150	2.36	28,664	940	4,075			245				1	1	118	30	30	1.18	10	59.00	20	1.43	60	0.25			
TOTAL FOR MAP NO. 5							2.54		100	150	2.36	28,664	940	4,075			245							1	1	118	30	30	1.18	10	59.00	20	1.43	60	0.25
		6	SR 1137	FROM NC 24/27 TO PAVEMENT CHANGE	2	NO	1.36	20	100	75	2.72		160	1,875			113					136	34	34	1.36	20	68.00	30	1.65	70	0.50				
TOTAL FOR MAP NO. 6							1.36		100	75	2.72		160	1,875			113								136	34	34	1.36	20	68.00	30	1.65	70	0.50	
		7	SR 1614	FROM NC 211 TO DEAD END	2	NO	0.14	24	25	25	0.28		275	230			14					14	5	5	0.14	10	7.00	10	0.17	10	0.25				
TOTAL FOR MAP NO. 7							0.14		25	25	0.28		275	230			14								14	5	5	0.14	10	7.00	10	0.17	10	0.25	
		8	SR 1324	FROM NC 24/27 TO PAVEMENT JOINT EAST OF NC 134	1	NO	2.56	22	200		5.12		500			2,925	190					256	64	64	2.56	20	128.00	40	3.10	130	0.75				
TOTAL FOR MAP NO. 8							2.56		200		5.12		500			2,925	190								256	64	64	2.56	20	128.00	40	3.10	130	0.75	
TOTAL FOR PROJ NO. 8CR.20621.17							9.11		625	465	15.50	28,664	2,425	7,105			5,025	754			23,748			1	1	768	194	194	7.68	90	384.00	150	9.38	400	2.50
GRAND TOTAL							30.31		865	465	21.50	212,904	4,425	7,105	44,135	5,025	754	2,648	23,748			1	1	1,368	344	344	13.68	130	684.00	250	16.64	700	4.00		

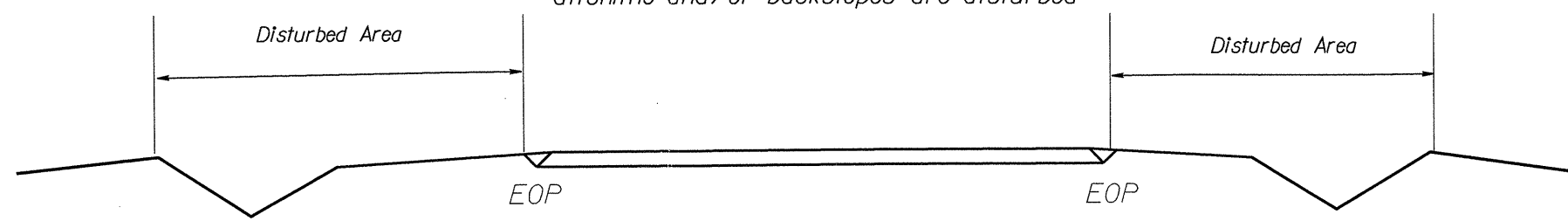
NOTES: Less than 5' - 10' undisturbed buffer from ROW, ditchline, water feature, or drainage inlet, add BMP.

EROSION CONTROL DETAIL

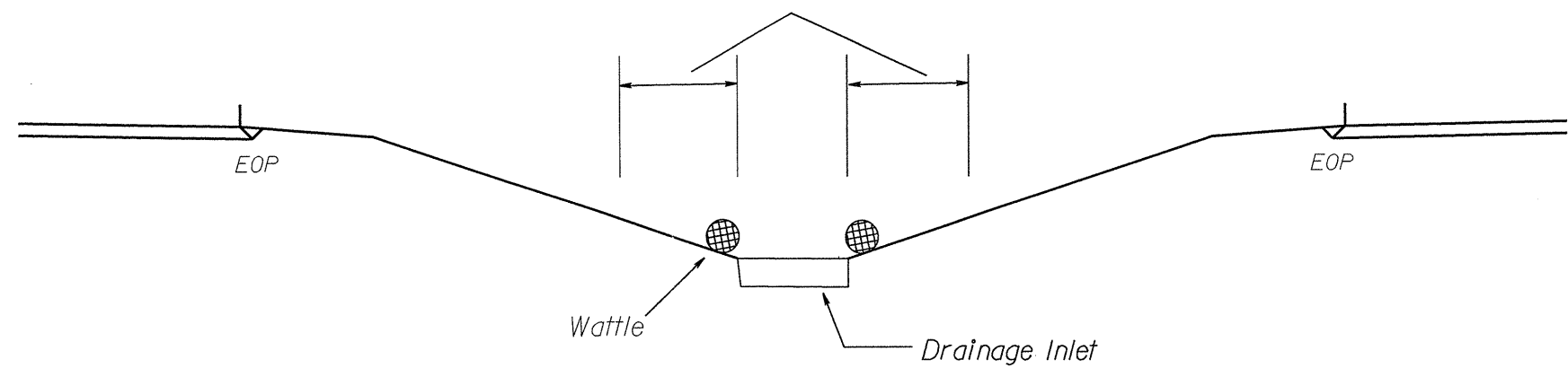
BMP Options: Wattle or Silt Fence



Use BMP's if shoulders and/or frontslopes and/or ditchline and/or backslopes are disturbed

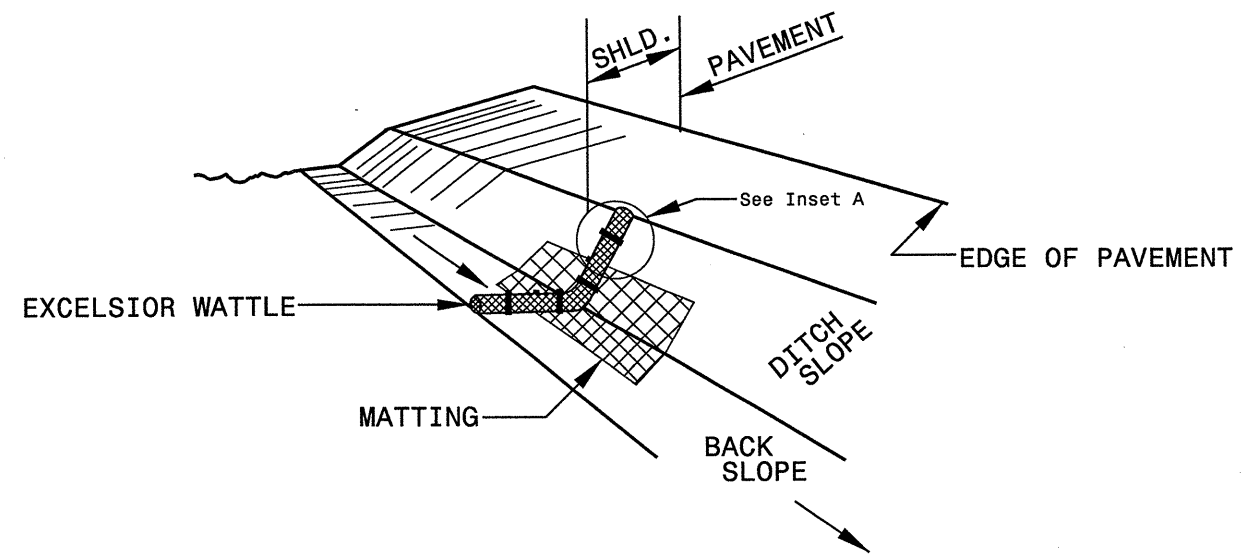


< 5' - 10' Undisturbed buffer from inlet, add wattle

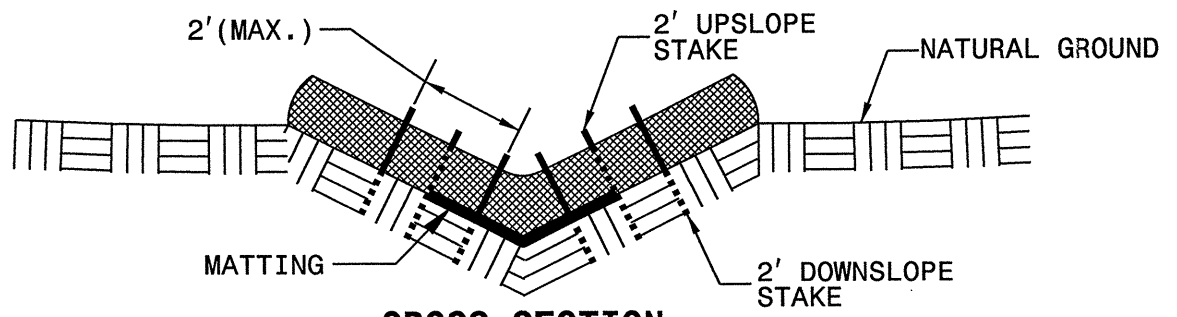


NOT TO SCALE

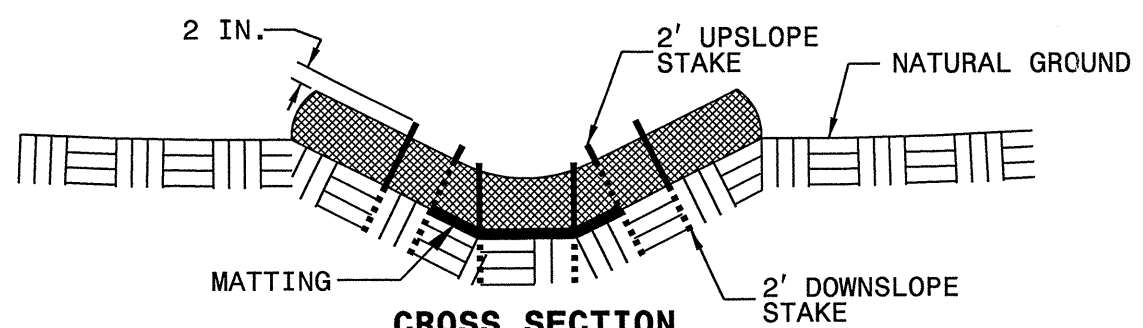
WATTLE DETAIL



ISOMETRIC VIEW



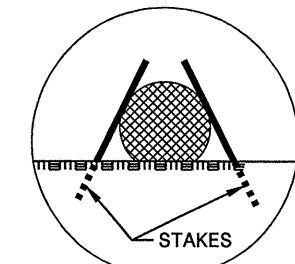
**CROSS SECTION
VEE DITCH**



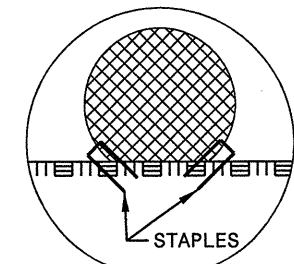
**CROSS SECTION
TRAPEZOIDAL DITCH**

NOTES:

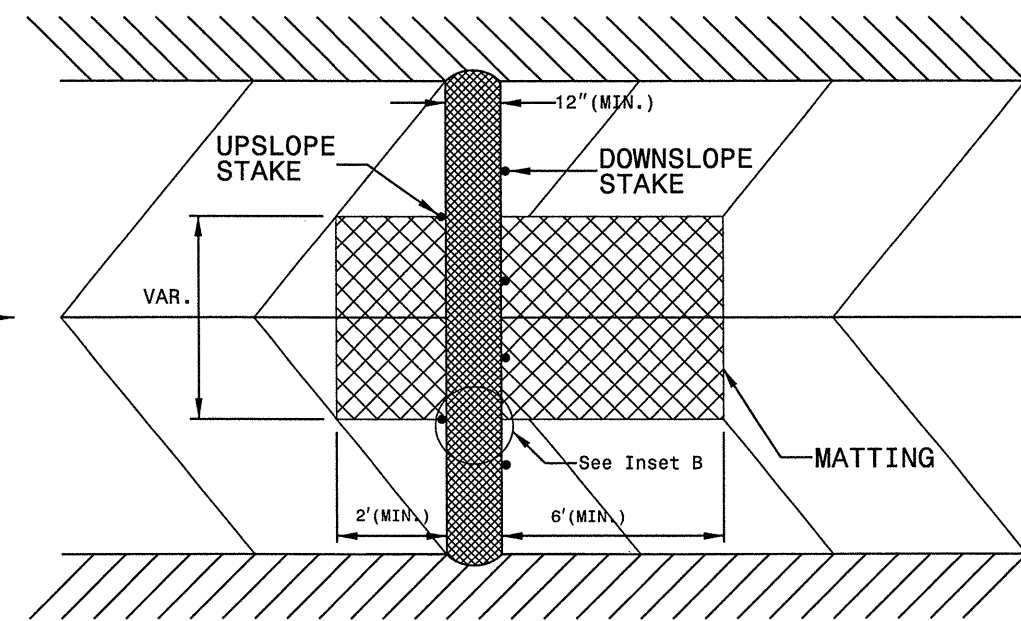
- USE MINIMUM 12 IN. DIAMETER EXCELSIOR WATTLE.
- USE 2 FT. WOODEN STAKES WITH A 2 IN. BY 2 IN. NOMINAL CROSS SECTION.
- ONLY INSTALL WATTLE(S) TO A HEIGHT IN DITCH SO FLOW WILL NOT WASH AROUND WATTLE AND SCOUR DITCH SLOPES AND AS DIRECTED.
- INSTALL A MINIMUM OF 2 UPSLOPE STAKES AND 4 DOWNSLOPE STAKES AT AN ANGLE TO WEDGE WATTLE TO BOTTOM OF DITCH.
- PROVIDE STAPLES MADE OF 0.125 IN. DIAMETER STEEL WIRE FORMED INTO A U SHAPE NOT LESS THAN 12" IN LENGTH.
- INSTALL STAPLES APPROXIMATELY EVERY 1 LINEAR FOOT ON BOTH SIDES OF WATTLE AND AT EACH END TO SECURE IT TO THE SOIL.
- INSTALL MATTING IN ACCORDANCE WITH SECTION 1631 OF THE STANDARD SPECIFICATIONS.



INSET A

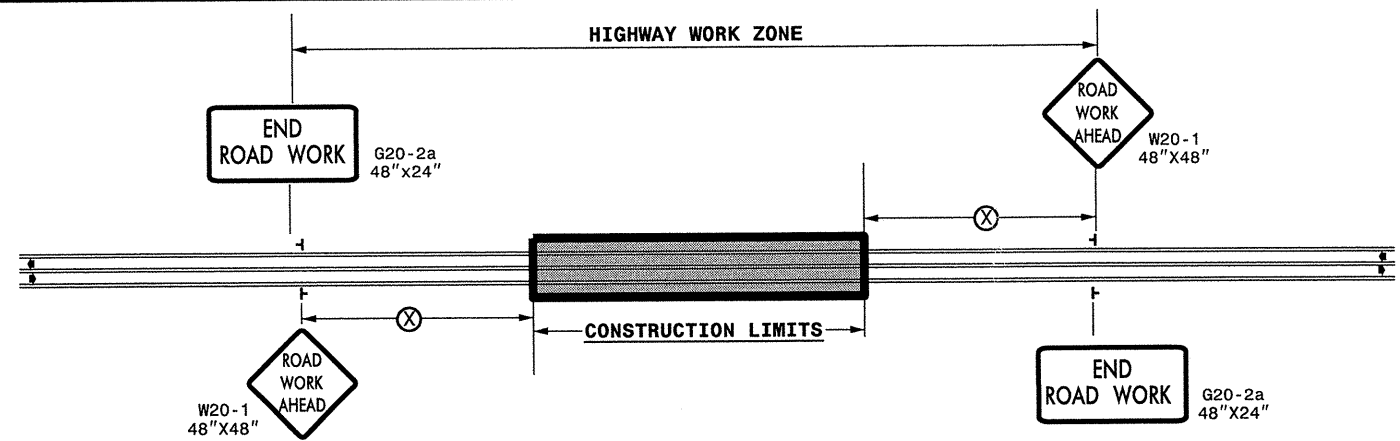


INSET B



TOP VIEW

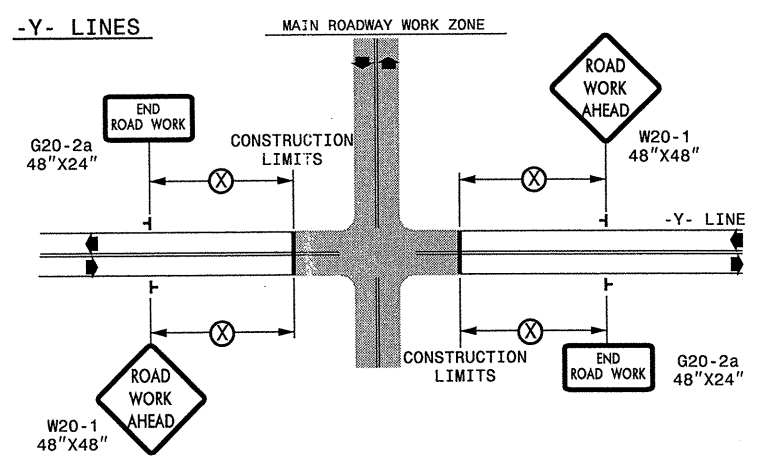
TWO-WAY UNDIVIDED ** (L-LINES)



POSTED SPEED LIMIT (M.P.H.)	RECOMMENDED MINIMUM SIGN SPACING
≤ 50	500'
≥ 55	1000'

STATE OF NORTH CAROLINA
DEPT. OF TRANSPORTATION
DIVISION OF HIGHWAYS
RALEIGH, N.C.

ROADWAYS INTERSECTING ALONG 2 WAY UNDIVIDED WORK ZONE (Y-LINES)



DETAIL DRAWING FOR
TWO-WAY UNDIVIDED
WORK ZONE WARNING SIGNS

GENERAL NOTES

- USE FLUORESCENT ORANGE SHEETING (TYPE VII OR HIGHER) ON ALL ADVANCED WORK ZONE SIGNS.
- DO NOT INSTALL ADVANCE WARNING SIGNS MORE THAN 3 DAYS PRIOR TO BEGINNING OF WORK.
- SIGNS SHOWN ARE REQUIRED FOR WORK ZONES THAT WILL REMAIN IN EFFECT OVERNIGHT. FOR SHORT-TERM DAILY MAINTENANCE TYPE OPERATIONS, THIS SIGNING APPLICATION IS OPTIONAL; MAY USE ONLY APPLICABLE ROADWAY STANDARD DRAWINGS INSTEAD. HOWEVER, IF THIS SIGNING APPLICATION IS USED, SIGNS MAY BE PORTABLE MOUNTED.
- ALL SIGN SPACING DIMENSIONS ARE APPROXIMATE, FIELD ADJUST AS NECESSARY OR AS DIRECTED.
- USE 3LB STEEL U-CHANNEL POST OR 4" X 4" WOOD POST FOR ALL WORK ZONE SIGNS. 3LB STEEL U-CHANNEL POSTS MUST MEET THE REQUIREMENTS OF STANDARD SPECIFICATION SECTION 1094-1(B), MAY BE GALVANIZED STEEL, OR MAY BE PAINTED GREEN BY THE POST MANUFACTURER. SQUARE STEEL TUBING POSTS HAVING EQUIVALENT STRENGTH OF THE 3 LB STEEL U-CHANNEL POST ARE ALSO ACCEPTABLE FOR USE. ERECT SIGNS PER ROADWAY STANDARD DRAWING 1110.01. PAYMENT FOR WOOD POSTS, 3LB STEEL U-CHANNEL AND SQUARE STEEL TUBING POSTS WITH SIGNS WILL BE MADE ACCORDING TO STANDARD SPECIFICATION "WORK ZONE SIGNS" SECTION 1110.
- WHEN NECESSARY, USE SPLICING IN ACCORDANCE WITH ROADWAY STANDARD DRAWING NO. 1110.01. REMOVE ENTIRE POST WHEN REMOVING SIGNS WITH SPLICED POSTS.
- DO NOT BACK BRACE SIGN SUPPORTS.
- ** TWO-WAY UNDIVIDED ADVANCE WARNING SIGN CONFIGURATION MAY BE USED ON URBAN MULTI-LANE FACILITIES WHERE CONDITIONS LIMIT THE USE OF DUAL MOUNTED SIGNS AS DETERMINED BY THE ENGINEER.

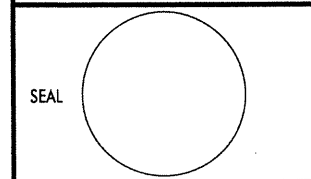
LEGEND

┆ STATIONARY SIGN

◀ DIRECTION OF TRAFFIC FLOW

SHEET 1 OF 1

APPROVED: _____ DATE: _____



DETAIL DRAWING FOR TWO-WAY UNDIVIDED AND URBAN FREEWAYS ADVANCED WORK ZONE WARNING SIGNS

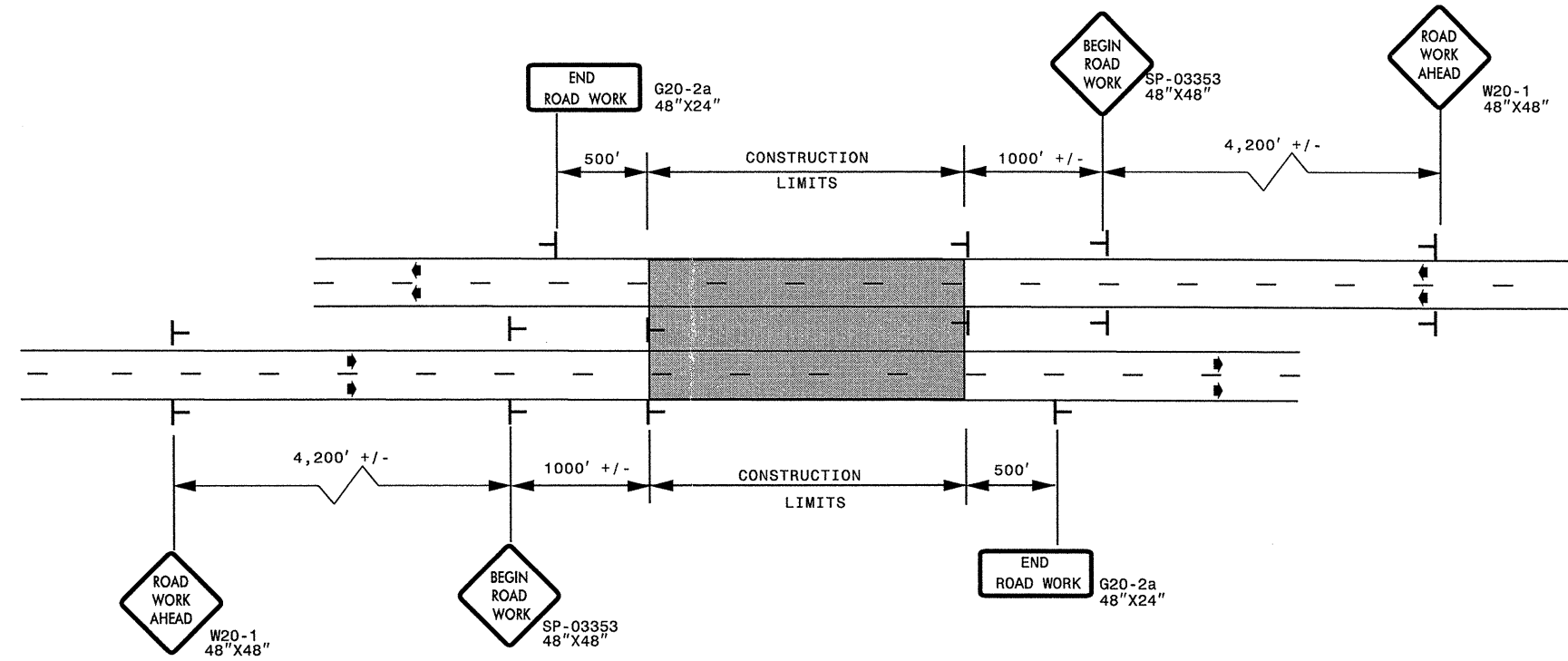
SCALE: NONE	REVISIONS
DATE: _____	7-98 10/01
DWG. BY: _____	10-98 03/04
DESIGN BY: _____	01/01 11/04
REVIEWED BY: _____	CARD FILE

03-JUN-2011 10:55
 \\DOT\DFSROOT\DOT\GROUPS-WZ\TCCC\TMU\WZTC\Resurfacing\2011Central\2011_Div08_C202800A-B_8CR.10621.17x2_2way_Undiv.&Urban_Frways_stationary.dgn
 jwills AT TE247530

ADVANCED WORK ZONE WARNING SIGNING FOR FREEWAYS (4 LANES OR GREATER)

PROJ. REFERENCE NO.	SHEET NO.
8CR.10621.17	TCP-2
8CR.20621.17	

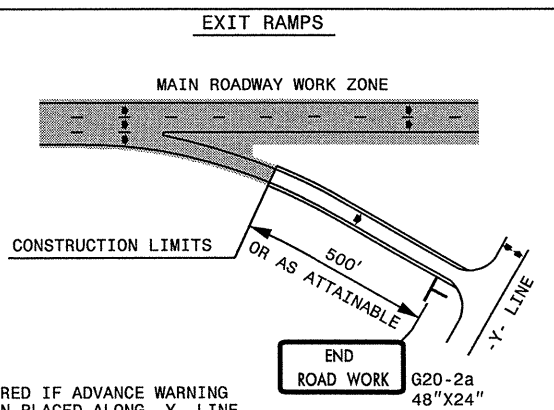
DETAIL A



LEGEND	
—	STATIONARY SIGN
→	DIRECTION OF TRAFFIC FLOW

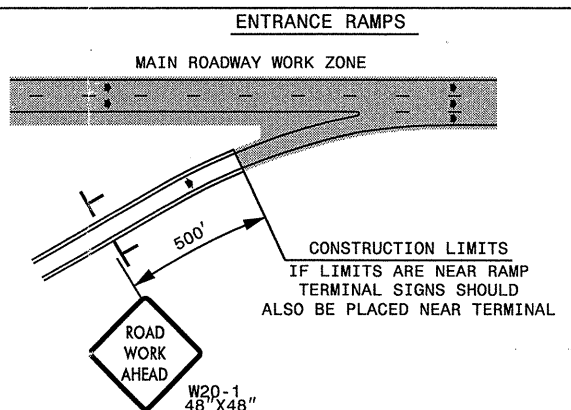
* USE THE "\$250 SPEEDING PENALTY" SIGN, SPEED LIMIT SIGN, AND ORANGE PANEL; ONLY WHEN A "\$250 SPEEDING PENALTY" ORDINANCE HAS BEEN ISSUED BY THE REGIONAL TRAFFIC ENGINEER.

DETAIL B



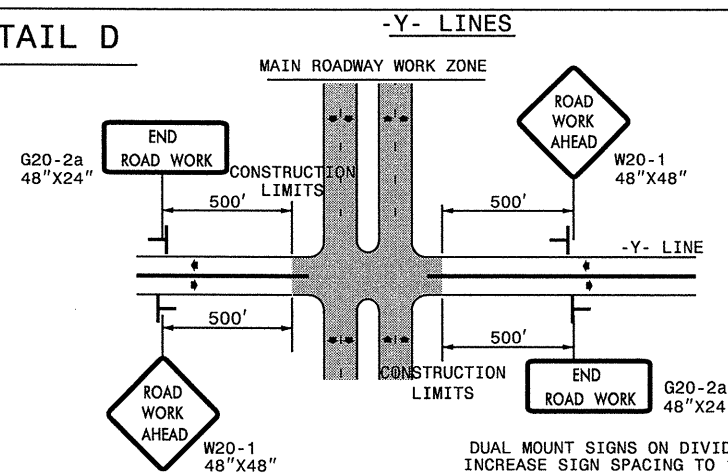
NOTE: SIGN NOT REQUIRED IF ADVANCE WARNING SIGNS HAVE BEEN PLACED ALONG -Y- LINE THAT RAMP INTERSECTS. IF CONSTRUCTION LIMITS ARE AT END OF RAMP, PLACE SIGN AT END OF RAMP.

DETAIL C



CONSTRUCTION LIMITS IF LIMITS ARE NEAR RAMP TERMINAL SIGNS SHOULD ALSO BE PLACED NEAR TERMINAL

DETAIL D



DUAL MOUNT SIGNS ON DIVIDED HIGHWAYS AND INCREASE SIGN SPACING TO 1000'+/-.

GENERAL NOTES

- USE FLUORESCENT ORANGE SHEETING (TYPE VII OR HIGHER) ON ALL ADVANCED WORK ZONE SIGNS.
- DO NOT INSTALL ADVANCE WARNING SIGNS MORE THAN 3 DAYS PRIOR TO BEGINNING OF WORK.
- SIGNS SHOWN ARE REQUIRED FOR WORK ZONES THAT WILL REMAIN IN EFFECT OVERNIGHT. FOR SHORT-TERM DAILY MAINTENANCE TYPE OPERATIONS, THIS SIGNING APPLICATION IS OPTIONAL; MAY USE ONLY APPLICABLE ROADWAY STANDARD DRAWINGS INSTEAD. HOWEVER, IF THIS SIGNING APPLICATION IS USED, SIGNS MAY BE PORTABLE MOUNTED.
- ALL SIGN SPACING DIMENSIONS ARE APPROXIMATE, FIELD ADJUST AS NECESSARY OR AS DIRECTED.
- USE 3LB STEEL U-CHANNEL POST OR 4" X 4" WOOD POST FOR ALL WORK ZONE SIGNS. 3LB STEEL U-CHANNEL POSTS MUST MEET THE REQUIREMENTS OF STANDARD SPECIFICATION SECTION 1094-1(B), MAY BE GALVANIZED STEEL, OR MAY BE PAINTED GREEN BY THE POST MANUFACTURER. SQUARE STEEL TUBING POSTS HAVING EQUIVALENT STRENGTH OF THE 3 LB STEEL U-CHANNEL POST ARE ALSO ACCEPTABLE FOR USE. ERECT SIGNS PER ROADWAY STANDARD DRAWING 1110.01. PAYMENT FOR WOOD POSTS, 3LB STEEL U-CHANNEL AND SQUARE STEEL TUBING POSTS WITH SIGNS WILL BE MADE ACCORDING TO STANDARD SPECIFICATION "WORK ZONE SIGNS" SECTION 1110.
- WHEN NECESSARY, USE SPLICING IN ACCORDANCE WITH ROADWAY STANDARD DRAWING NO. 1110.01. REMOVE ENTIRE POST WHEN REMOVING SIGNS WITH SPLICED POSTS.
- DO NOT BACK BRACE SIGN SUPPORTS.

APPROVED: _____ DATE: _____

SEAL

ADVANCED WORK ZONE WARNING SIGNS FOR FREEWAYS (4 LANES OR GREATER)	
SCALE: NONE	REVISIONS
DATE: 8/03	03/04
DWG. BY: JI	
DESIGN BY: JI	
REVIEWED BY:	

02-JUN-2011 14:42 \\DDOT\DFS\500\TON\GROU\PS-WZTC\CC\TMU\WZTC\Resur\Facing\2010\Centra\2011\Div08\C202800A-B_8CR.10621.17x2_freeways-4lanes-or-greater_stationary.dgn