

SIGN SUPPORT & TRUSS DETAILS FOR EAST TOWER

NOTES

- All holes are $\frac{1}{16}$ " and all bolts are $\frac{3}{4}$ " x 3" H.S. unless otherwise noted.
- Hardened washers shall be used on all bolted connections using H.S. Bolts.
- Where slots are used, the washers or bars shall have a size sufficient to completely cover the slot and have a minimum thickness of $\frac{5}{16}$ ". Hardened washers shall be placed over the plate or bar.
- All H.S. Bolts shall be installed at a minimum tension of 28,400 lb. See the Special Provisions for the correct procedure for tightening and required torque.
- All surfaces where field welding is called for shall be free of all paint. Contact surfaces, including those adjacent to the bolt heads, nuts, or washers, shall be free of paint, except for primer as called for in the Special Provisions.

SPECIAL PROVISIONS

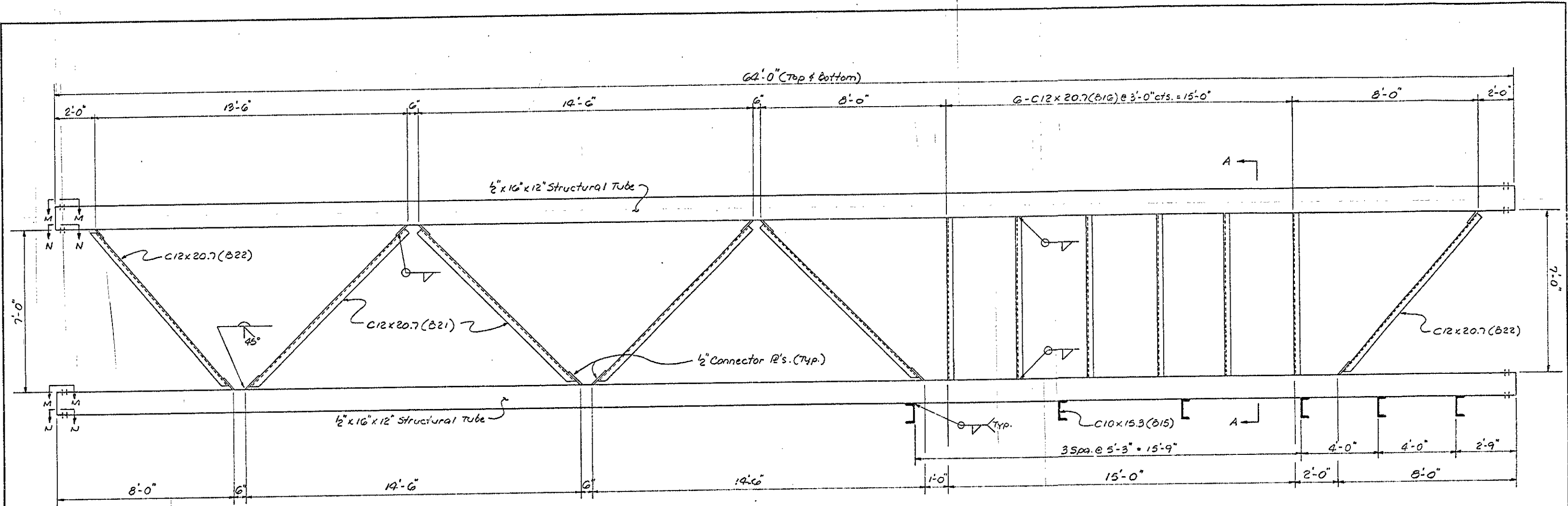
- H.S. Bolt Tightening
All H.S. Bolts shall be tightened according to section 440-10-C(3) of the NCDOT Standard Specifications for Roads and Structures dated January 1, 1984. The bolts shall then be torqued according to the procedure in Section 440-10-D.
- Painting
All structural steel for this project including grid flooring and pipe rail shall be painted by the manufacturer according to the Painting Special Provisions which accompany these plans. Bridge Maintenance forces will be responsible for any final painting in bolted or field welded areas and any touch-up painting that is required after erection.

STATE OF NORTH CAROLINA
DEPARTMENT OF TRANSPORTATION
RALEIGH

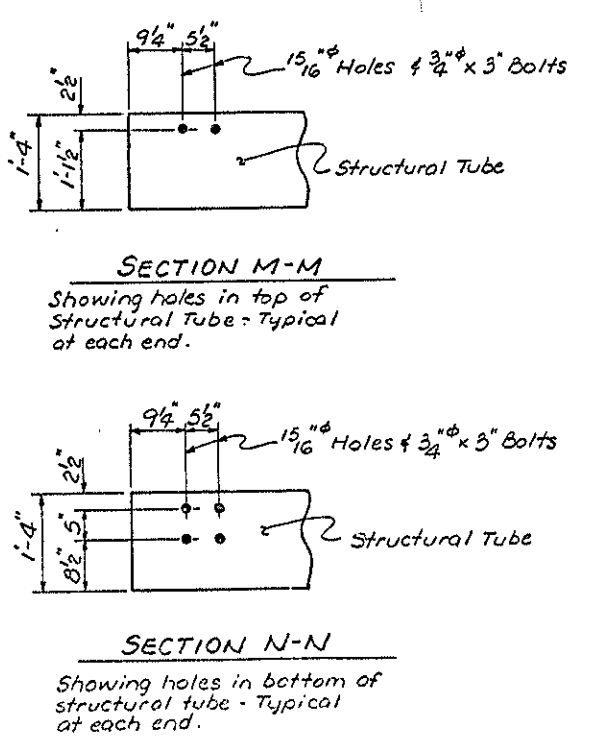
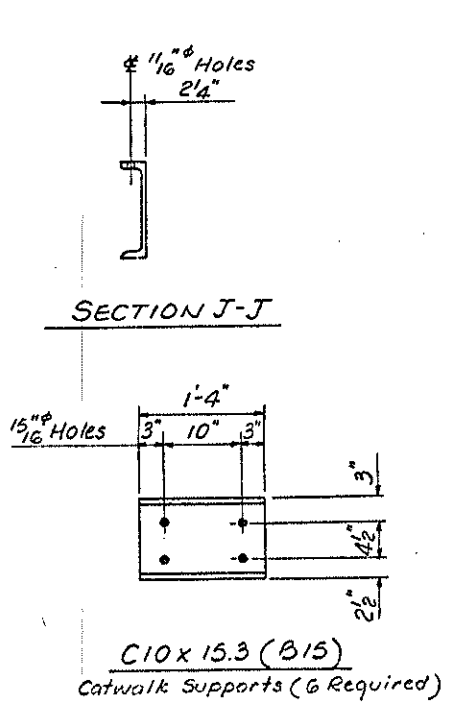
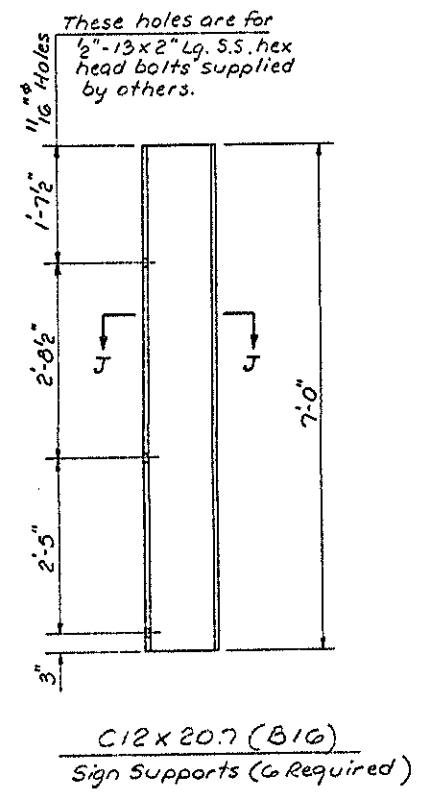
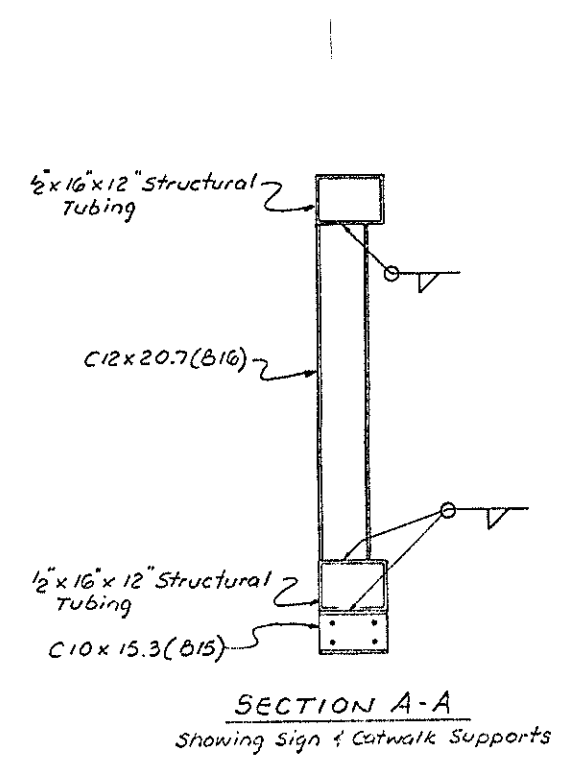
SIGN SUPPORTS
FOR EAST TOWER
PROJECT NO. B.7325002

JULY 1985

REVISIONS					SHEET NO. 1
NO.	BY	DATE	NO.	DATE	
1			3		TOTAL SHEETS 3
2			4		

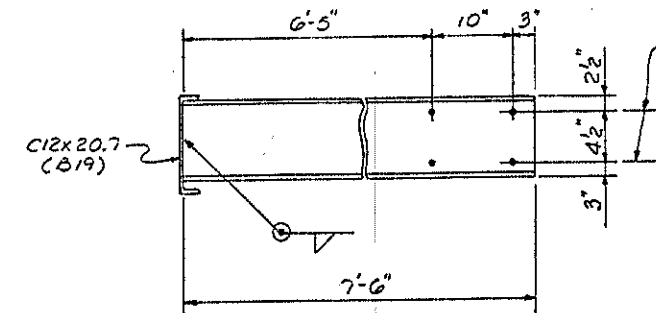
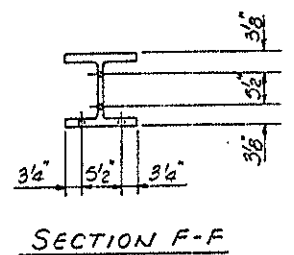
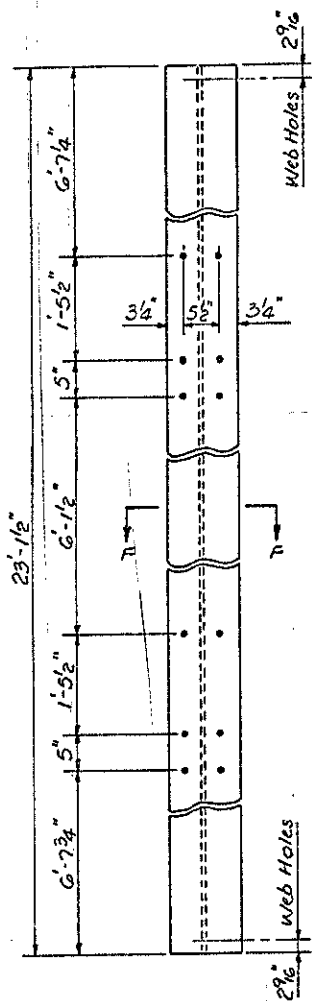


SIGN SUPPORT & TRUSS DETAILS FOR EAST TOWER

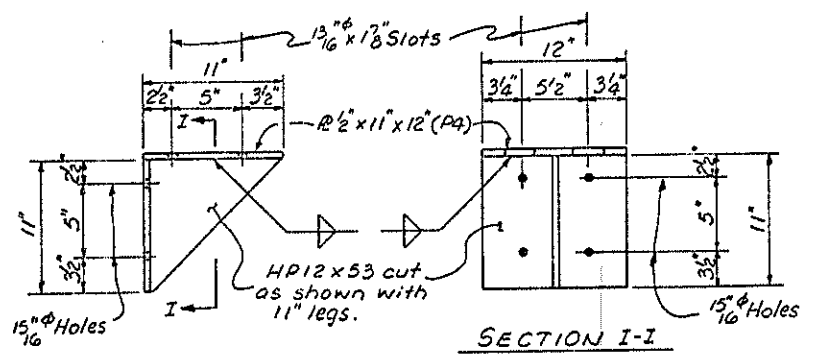
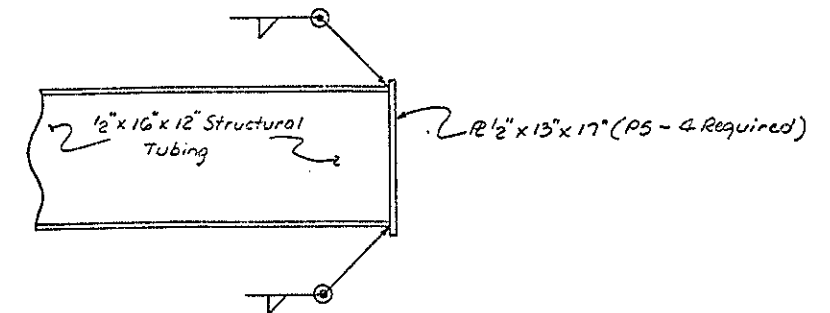
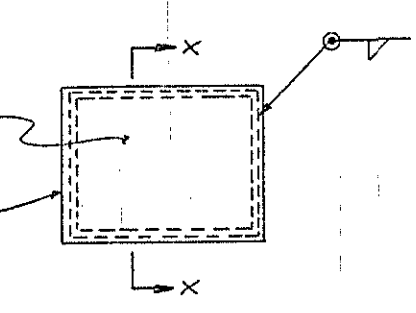


STATE OF NORTH CAROLINA					
DEPARTMENT OF TRANSPORTATION					
RALEIGH					
SIGN SUPPORT FOR EAST TOWER					
PROJECT NO. 8.7325002					
JULY 1985					
REVISIONS					
NO.	BY	DATE	NO.	BY	DATE
1			3		
2			4		
					SHEET NO. 2
					TOTAL SHEETS 8

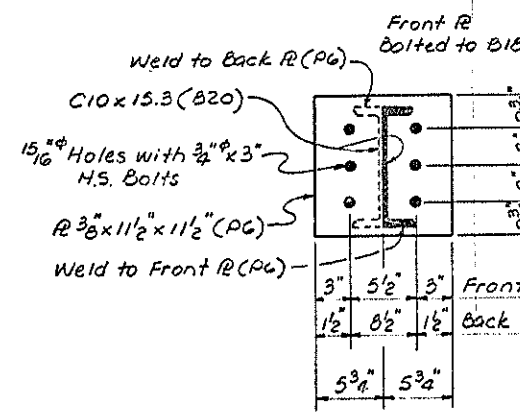
DRAWN BY RCM DATE 7/20/85
 CHECKED BY CWJ DATE 12/12/85



B14 - C10 x 15.3
(6 Required - Note: 1 opposite hand)

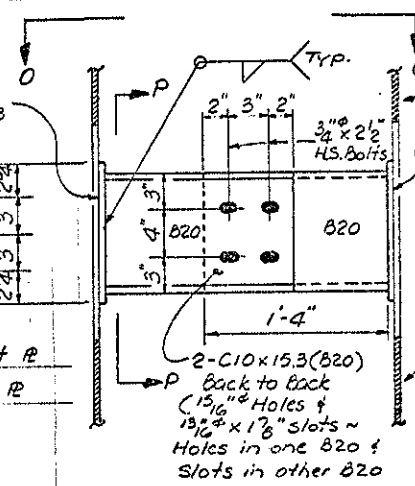


B13 - HP12x53
(4 Required)

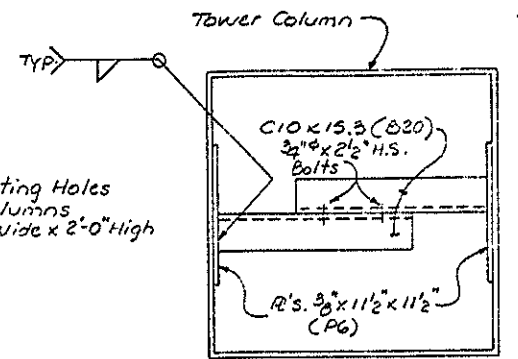


SECTION P-P

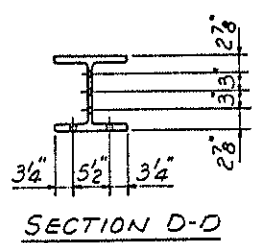
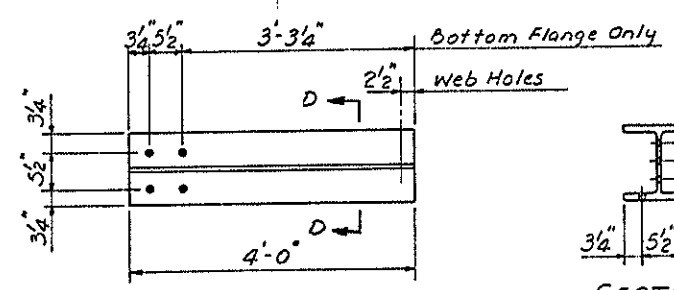
DETAIL A



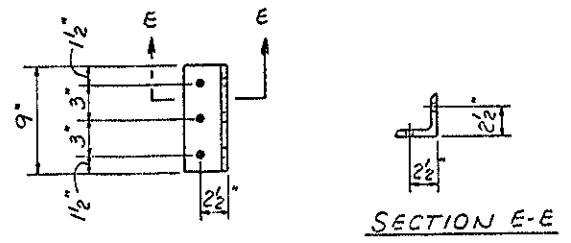
DETAIL B



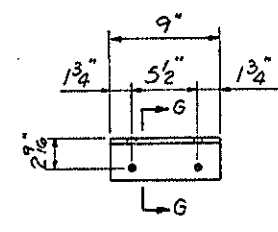
B11 - HP12x53
(2 Required)



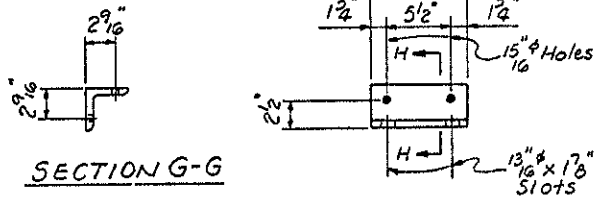
B17 - HP12x53
(4 Required)



B18 - L4 x 4 x 3/8
(6 Required)



B10 - L4 x 4 x 3/8
(4 Required)

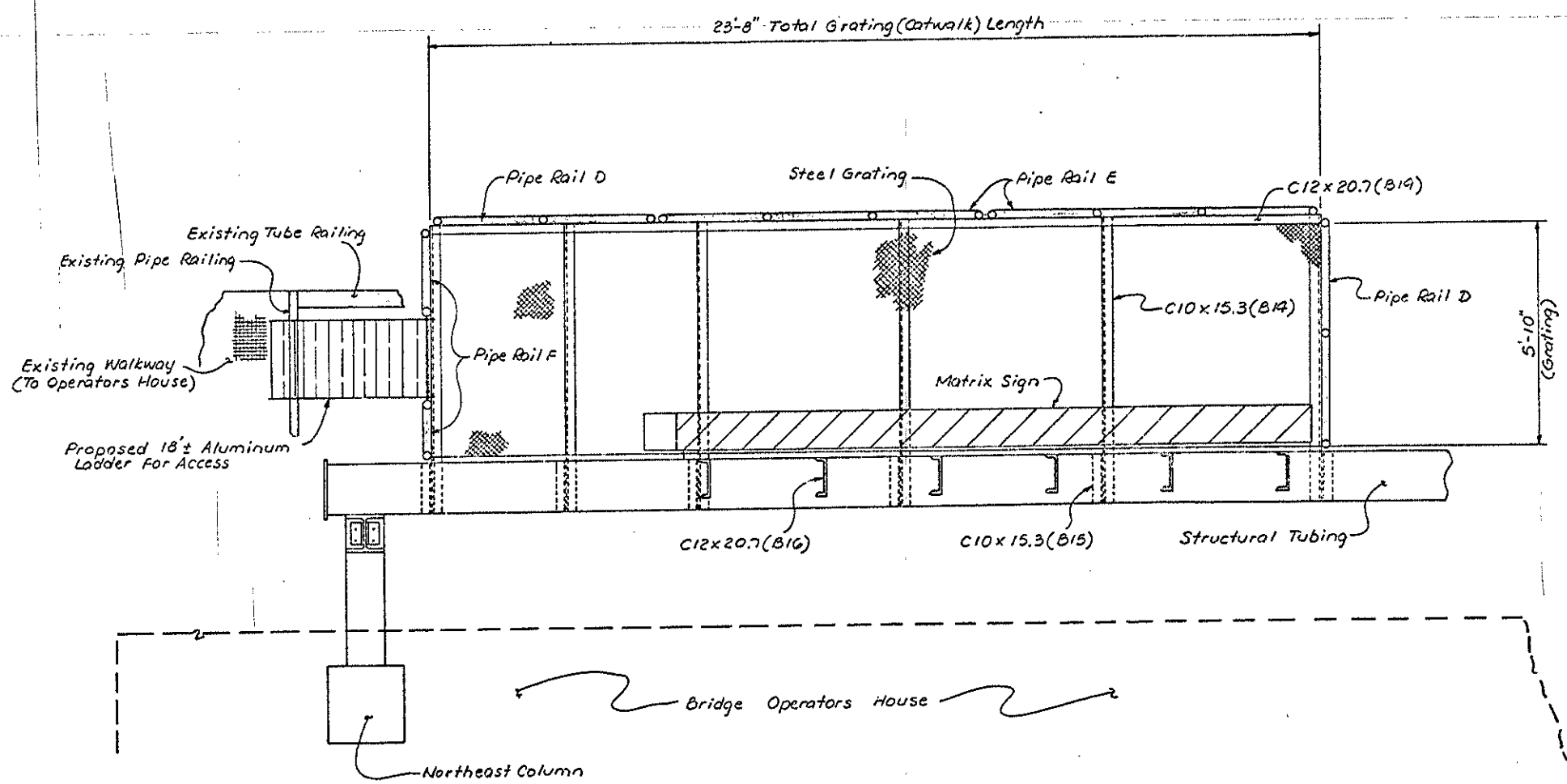


B12 - L4 x 4 x 1/2
(4 Required)

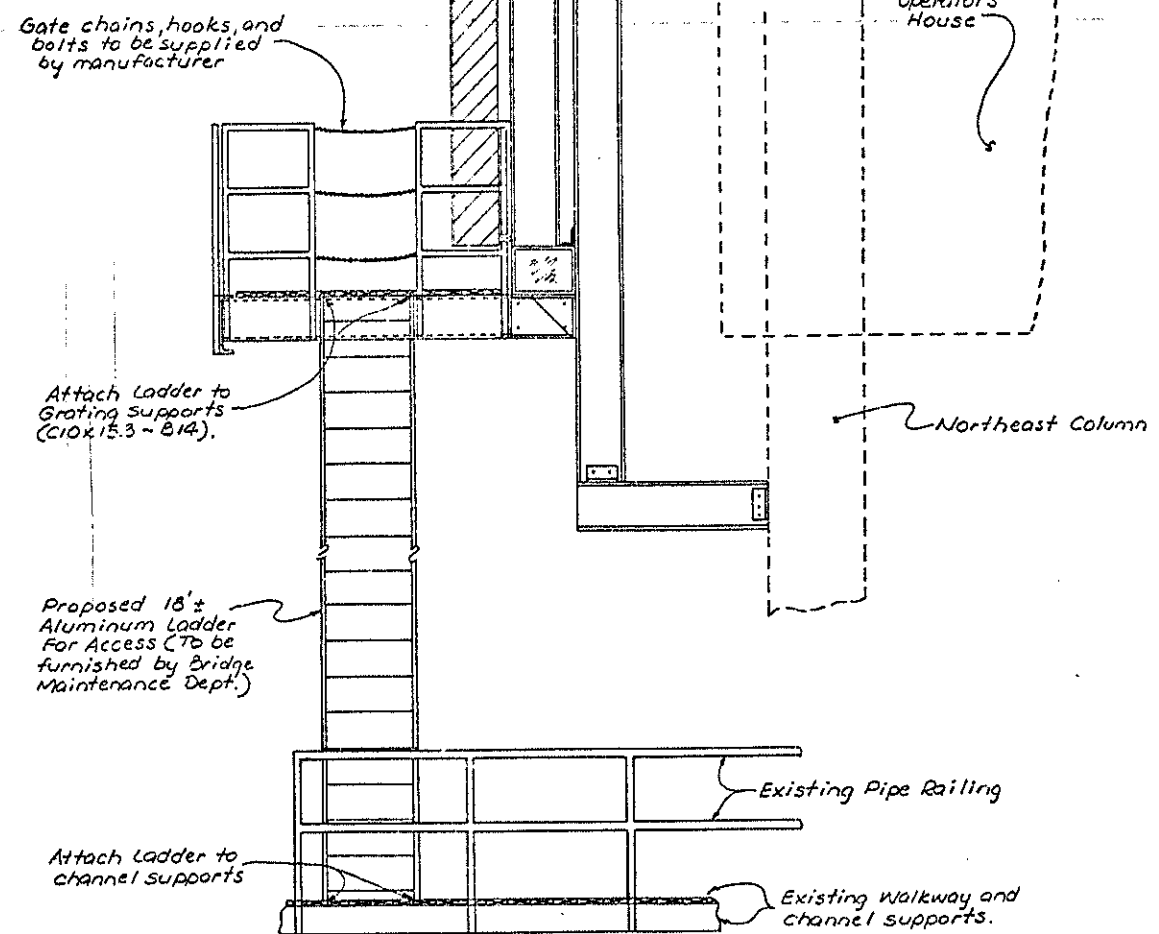
DRAWN BY RCM DATE 7/30/85
CHECKED BY CCK DATE 11/18/85

STATE OF NORTH CAROLINA
DEPARTMENT OF TRANSPORTATION
RALEIGH
SIGN SUPPORT
FOR EAST TOWER
PROJECT NO. B.7325002
JULY 1985

REVISIONS						SHEET NO. 8
NO.	BY	DATE	NO.	BY	DATE	
1			3			TOTAL SHEETS 8
2			4			



PLAN VIEW - SIGN SUPPORT DETAILS FOR EAST TOWER



THRU SECTION

DRAWN BY: REM DATE: 7/30/85
 CHECKED BY: C.W.L. DATE: 10/18/85

STATE OF NORTH CAROLINA
 DEPARTMENT OF TRANSPORTATION
 RALEIGH

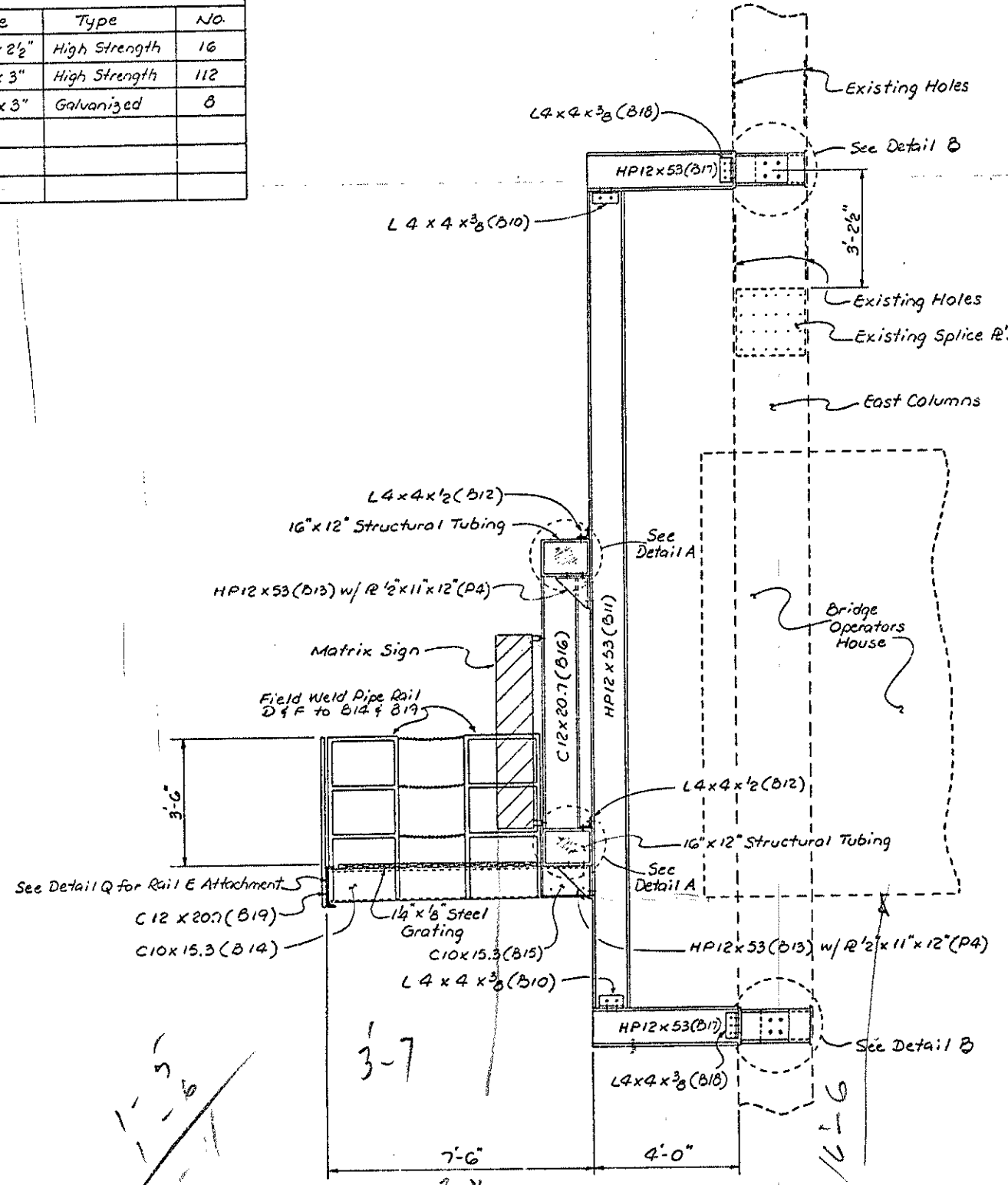
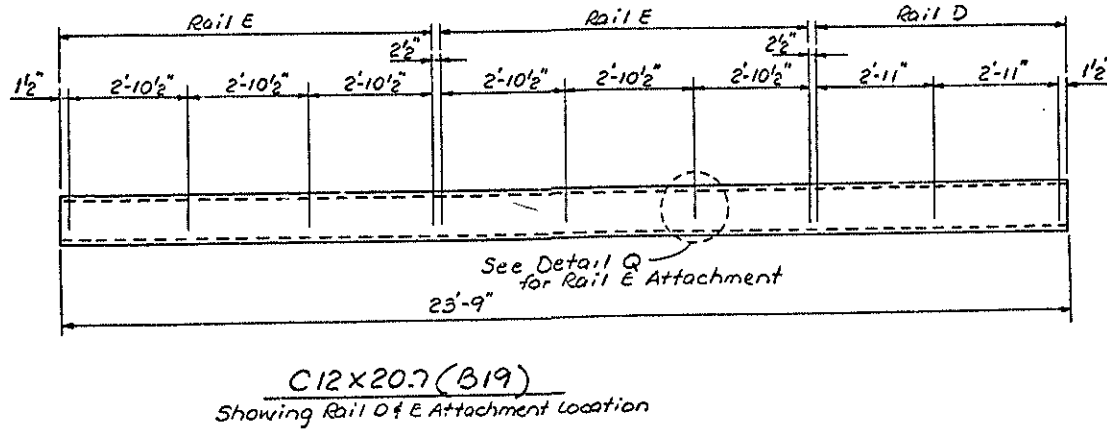
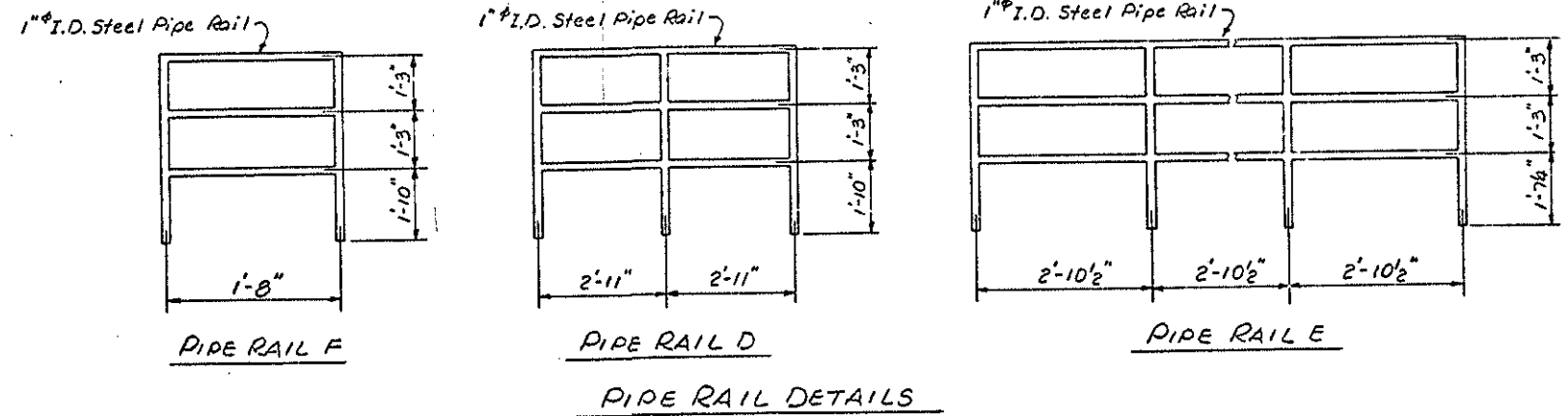
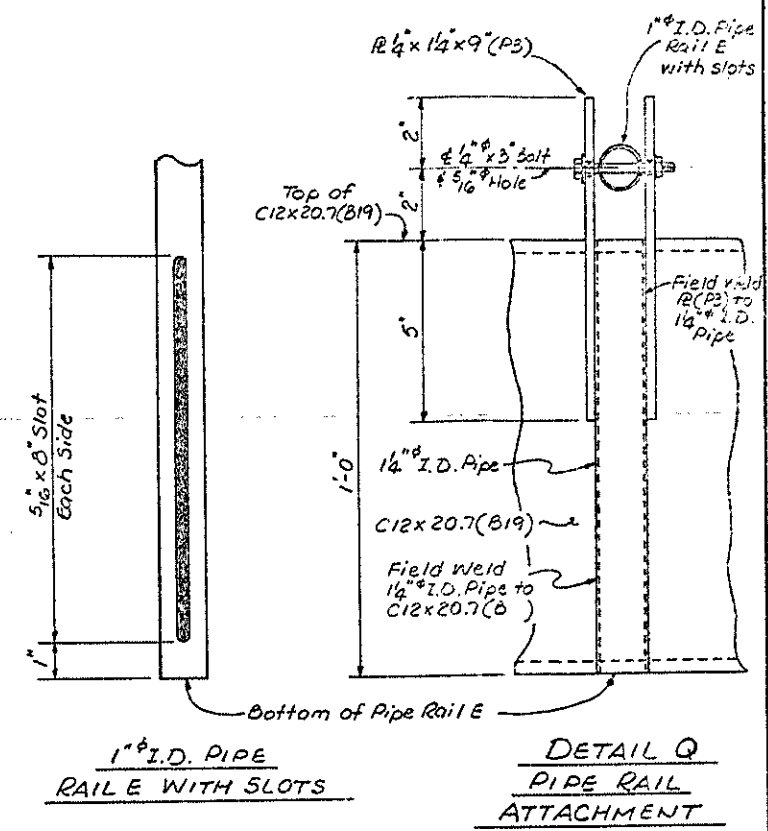
SIGN SUPPORT
 FOR EAST TOWER
 PROJECT NO. B.7325002

JULY 1985

REVISIONS						SHEET NO. 4
NO.	BY	DATE	NO.	BY	DATE	
1			3			TOTAL SHEETS 8
2			4			

BOLT LIST		
Size	Type	No.
3/4" x 2 1/2"	High Strength	16
3/4" x 3"	High Strength	112
1/2" x 3"	Galvanized	8

BILL OF MATERIAL			
Item	No.	Description	Length
B10	4	L4x4x3/8	0'-9"
B11	2	HP12x53	23'-1 1/2"
B12	4	L4x4x1/2	0'-9"
B13	4	HP12x53	-
B14	6	C10x15.3	7'-6"
B17	4	HP12x53	4'-0"
B18	8	L4x4x3/8	0'-9"
B19	1	C12x20.7	23'-9"
B20	8	C10x15.3	1'-4"
P3	16	R 1/4" x 1 1/2" x 9"	-
P4	4	R 1/2" x 11" x 12"	-
P5	4	R 1/2" x 13" x 17"	-
P6	8	R 3/8" x 1 1/2" x 1 1/2"	-
B15	6	C10x15.3	1'-4"
B16	6	C12x20.7	7'-0"
B21	4	C12x20.7	-
B22	2	C12x20.7	-
Structural Tubing	2	1/2" x 16" x 12"	64'-0"



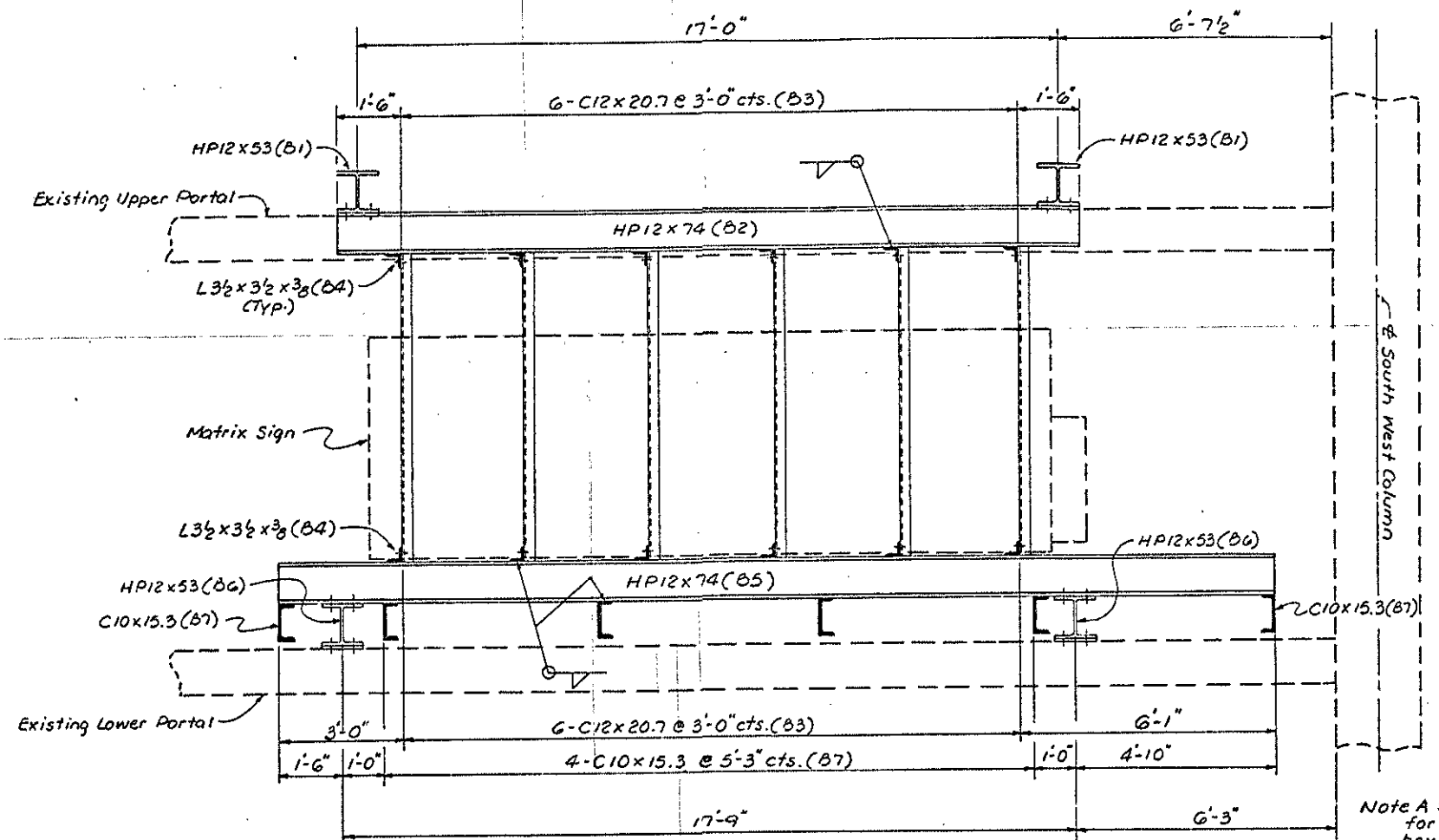
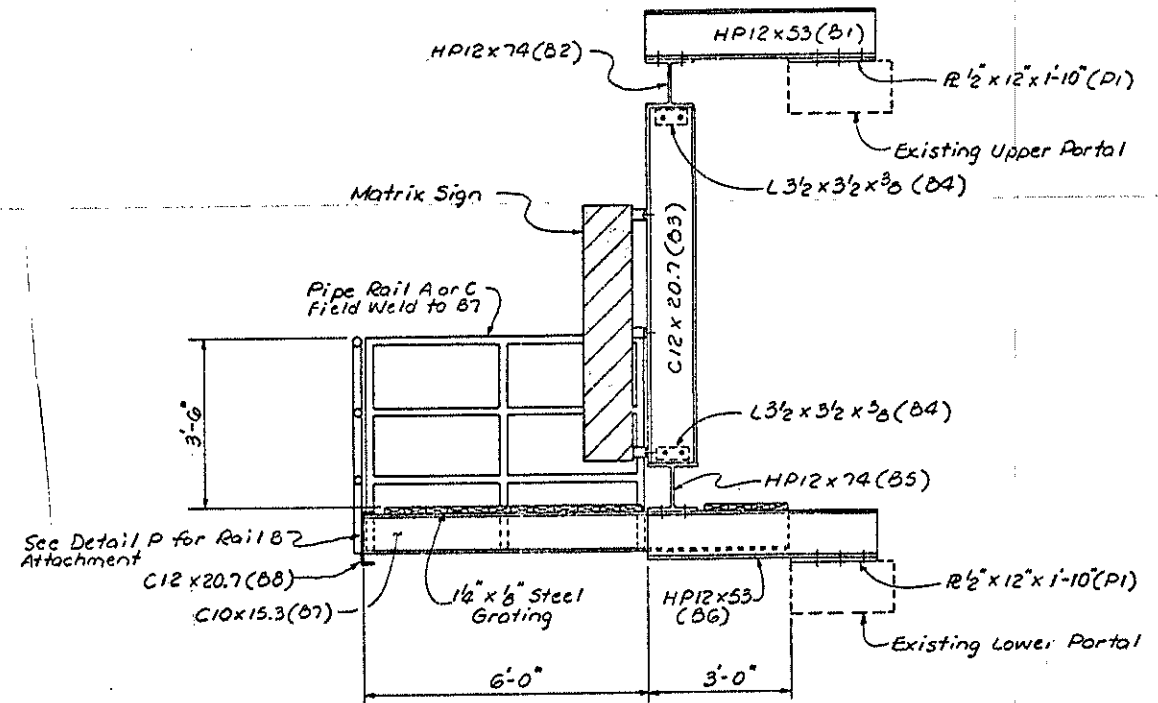
1-5
1-6
3-11

3-7
3-11
3-7 SIDE VIEW

SIGN SUPPORT DETAILS FOR EAST TOWER

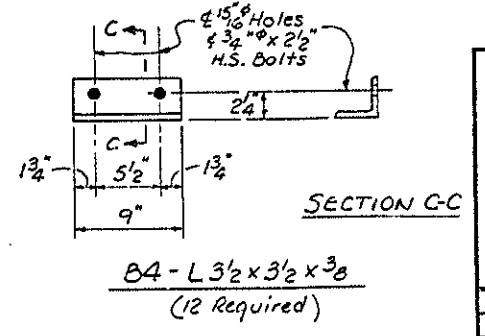
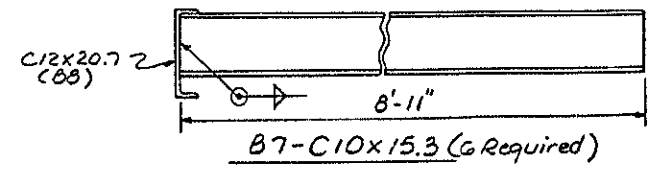
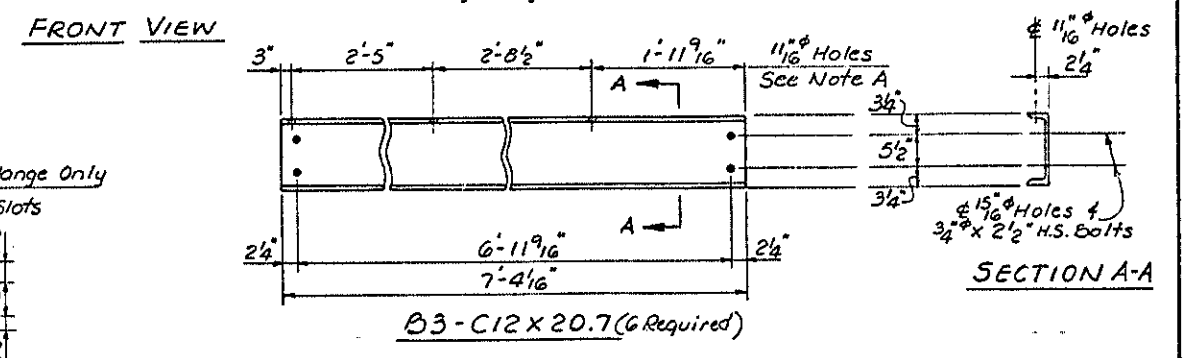
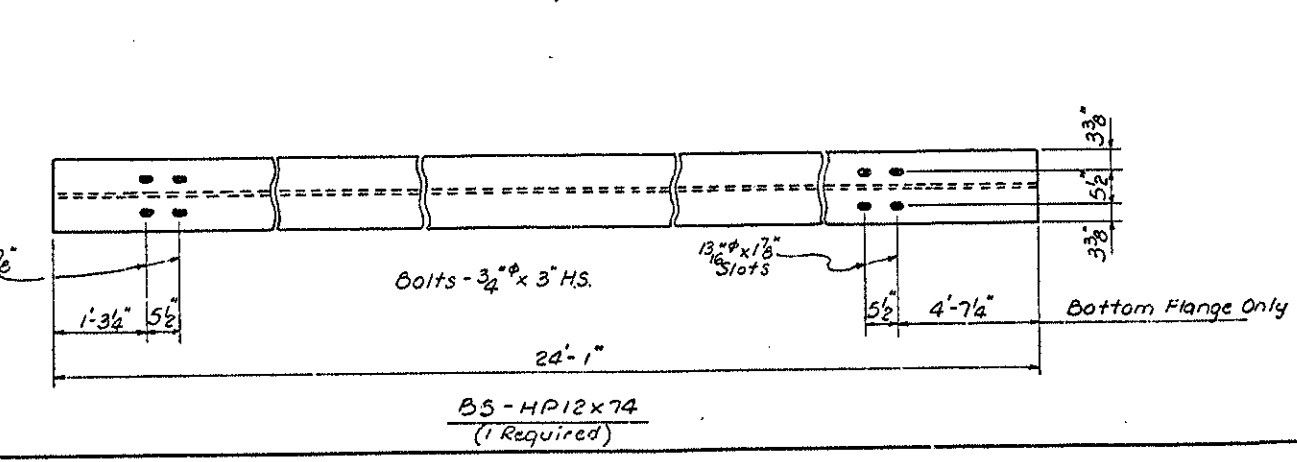
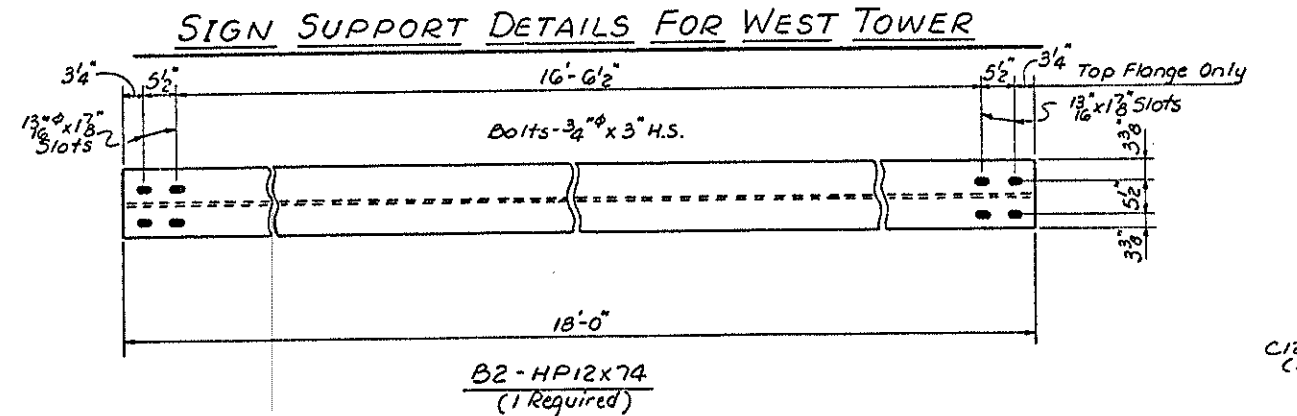
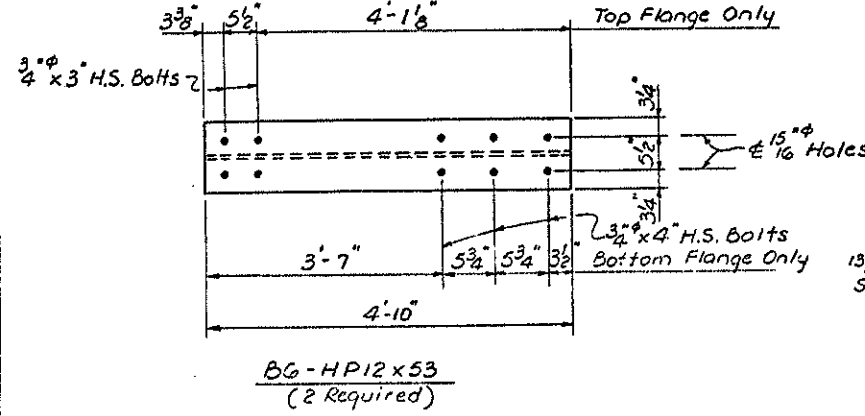
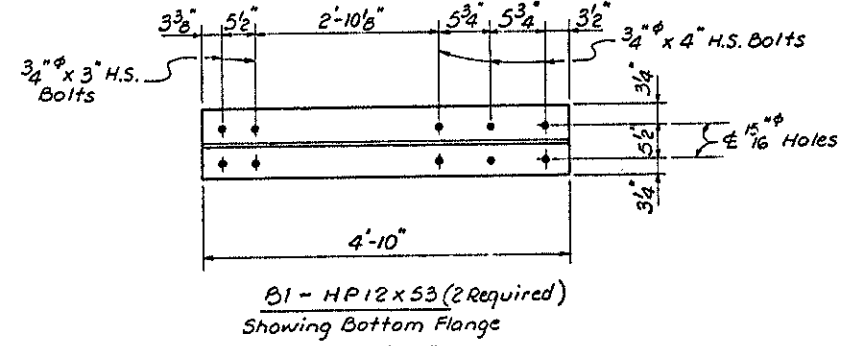
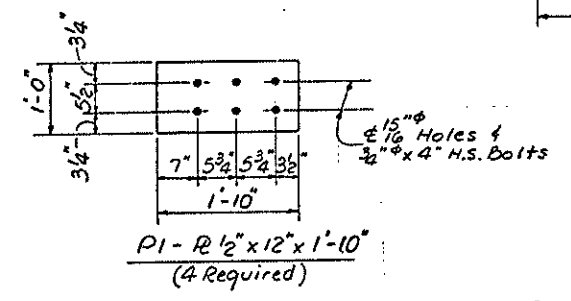
STATE OF NORTH CAROLINA					
DEPARTMENT OF TRANSPORTATION					
RALEIGH					
SIGN SUPPORT					
FOR EAST TOWER					
PROJECT NO. B.7325002					
JULY 1985					
REVISIONS					
NO.	BY	DATE	NO.	BY	DATE
1			3		
2			4		
TOTAL SHEETS					5
TOTAL SHEETS					6

DRAWN BY: RCM DATE: 7/30/85
CHECKED BY: COW DATE: 8/12/85



Note A: These holes are for 1/2-13x2 Lg. S.S. hex head bolts supplied by others.

Note: Catwalk grating and pipe rail not shown.

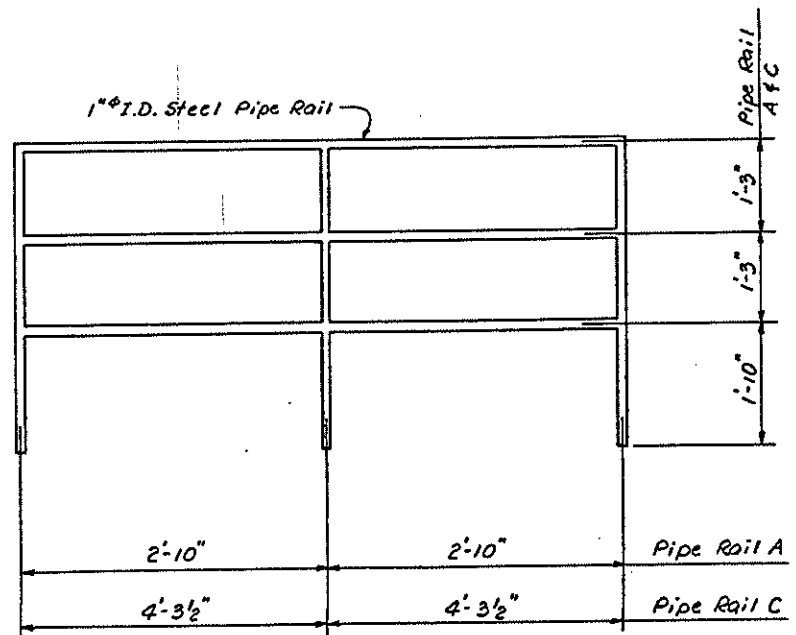
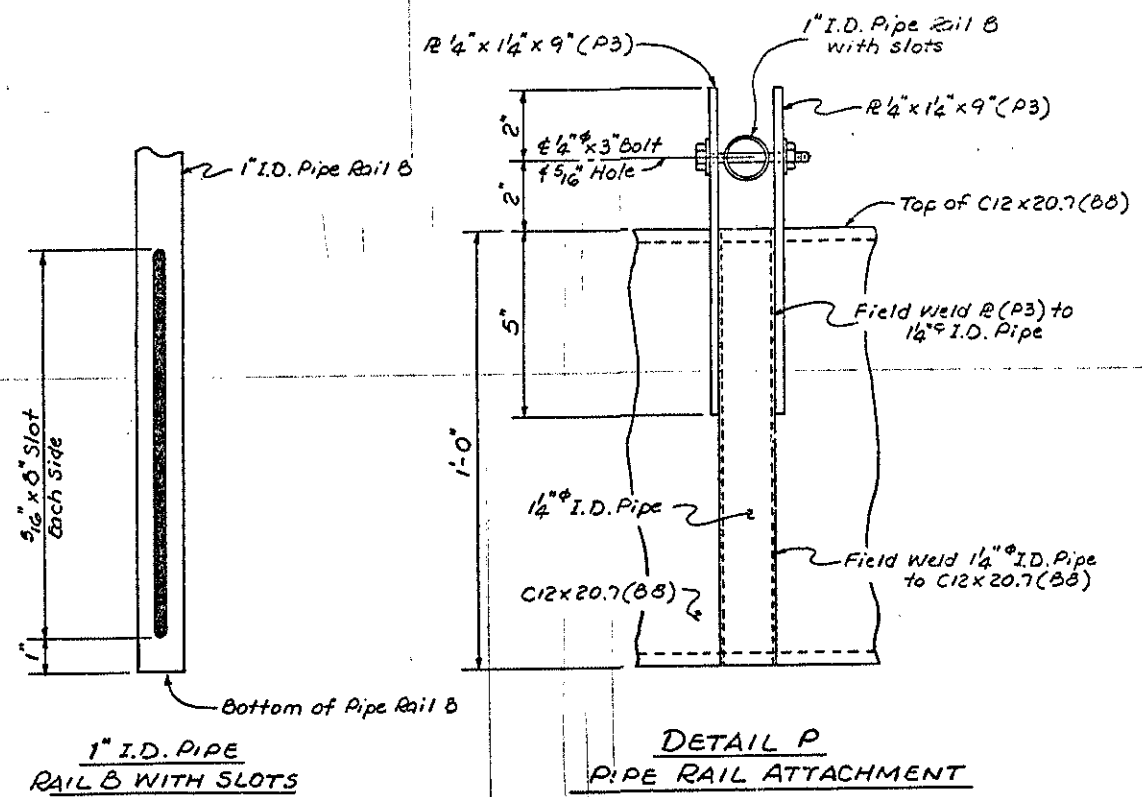


DRAWN BY: RCM DATE: 7/30/85
CHECKED BY: CJD DATE: 10/2/85

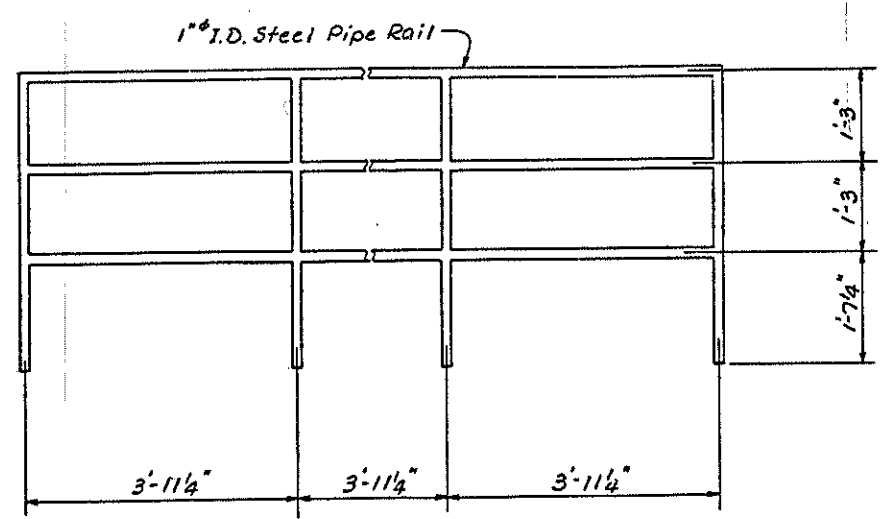
STATE OF NORTH CAROLINA					
DEPARTMENT OF TRANSPORTATION					
RALEIGH					
SIGN SUPPORT FOR WEST TOWER					
PROJECT NO. B.7325002					
JULY 1985					
REVISIONS					SHEET NO. 6
NO.	BY	DATE	NO.	BY	
1			3		
2			4		
TOTAL SHEETS					6

BILL OF MATERIAL			
Item	No.	Description	Length
B1	2	HP12x53	4'-10"
B2	1	HP12x74	18'-0"
B3	6	C12x20.7	7'-4 1/16"
B4	12	L 3 1/2 x 3 1/2 x 3/8	0'-9"
B5	1	HP12x74	24'-1"
B6	2	HP12x53	4'-10"
B7	6	C10x15.3	8'-11"
B8	1	C12x20.7	24'-1"
B9	8	C10x15.3	0'-7 1/2"
P1	4	R 1/2 x 12 x 1'-10"	-
P2	8	R 11 1/2 x 11 1/2 x 3/8	-
P3	16	R 1/4 x 14 x 9"	-

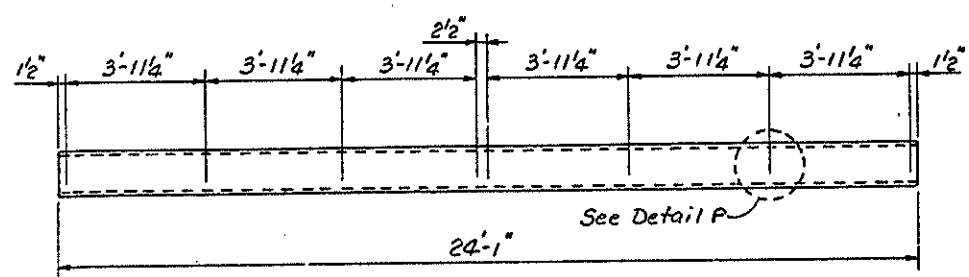
BOLT LIST		
Size	Type	No.
3/4" x 2 1/2"	High Strength	32
3/4" x 3"	High Strength	16
3/4" x 4"	High Strength	24
1/2" x 3"	Galvanized	8



PIPE RAIL DETAIL
Showing Pipe Rail A & C



PIPE RAIL DETAIL
Showing Pipe Rail B



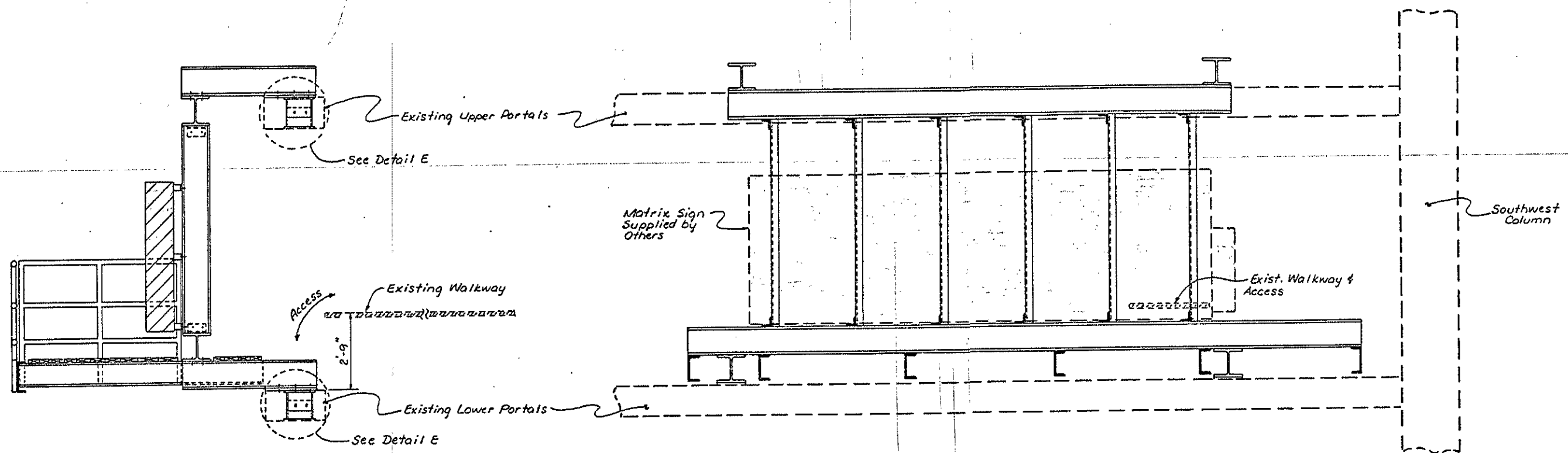
C12x20.7(BB)
Showing Rail Attachment Location

STATE OF NORTH CAROLINA
DEPARTMENT OF TRANSPORTATION
RALEIGH

SIGN SUPPORT
FOR WEST TOWER
PROJECT NO. 8.7325002

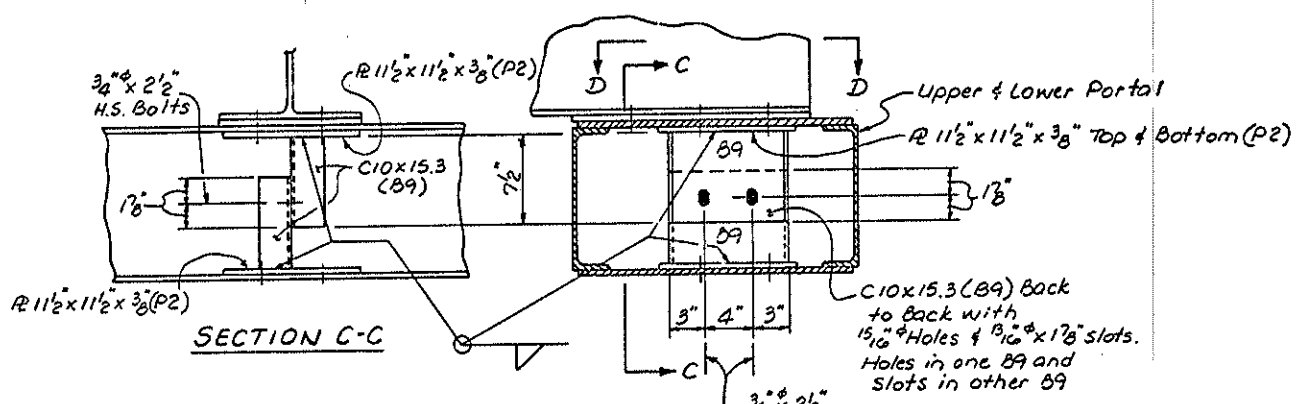
JULY 1985

REVISIONS						SHEET NO. 3
NO.	BY	DATE	NO.	BY	DATE	
1			3			TOTAL SHEETS 3
2			4			



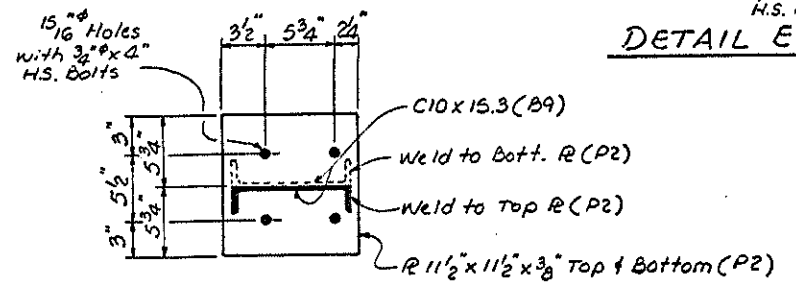
THRU SECTION

FRONT VIEW

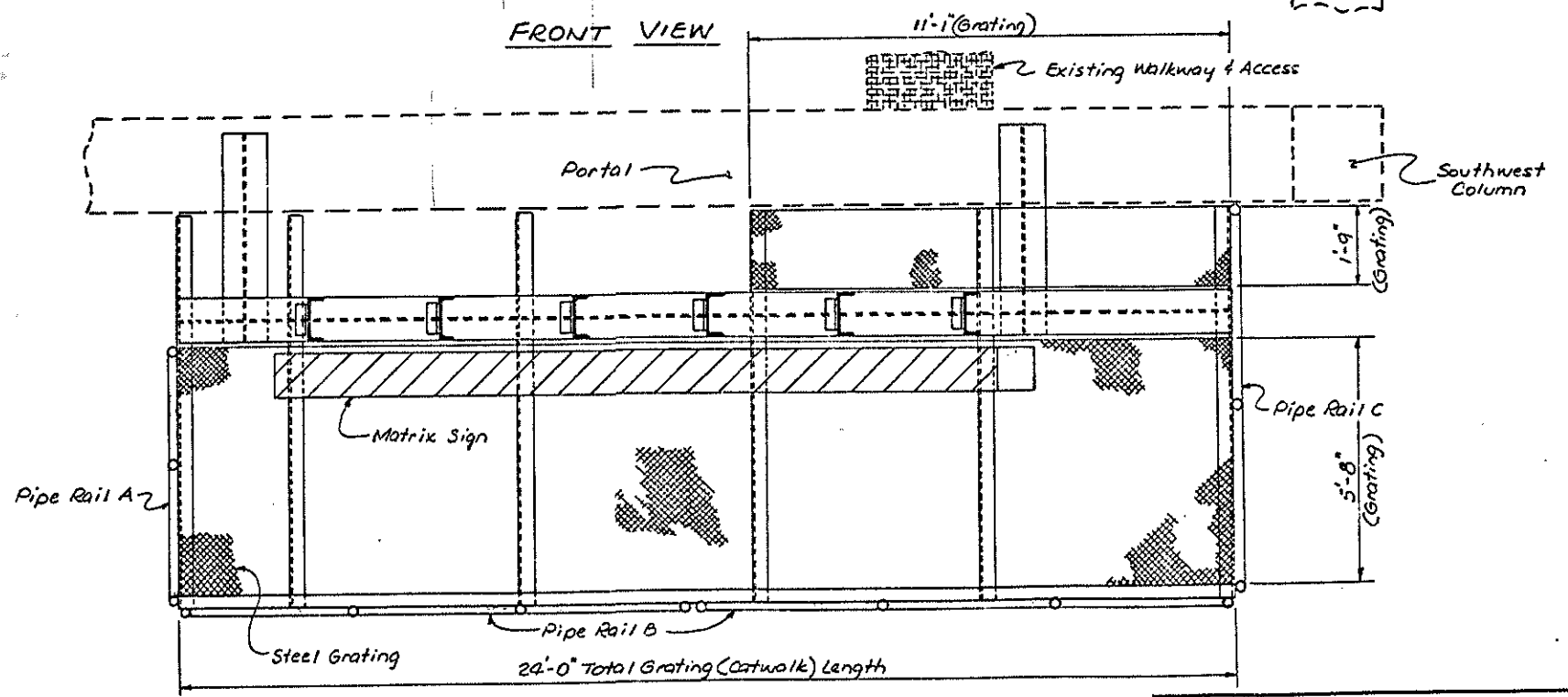


SECTION C-C

DETAIL E



SECTION D-D



PLAN VIEW

SIGN SUPPORT DETAILS FOR WEST TOWER

STATE OF NORTH CAROLINA
DEPARTMENT OF TRANSPORTATION
RALEIGH

SIGN SUPPORT
FOR WEST TOWER
PROJECT NO. 8.7325002

JULY 1985

REVISIONS						SHEET NO. 7
NO.	BY	DATE	NO.	BY	DATE	
1			3			TOTAL SHEETS 8
2			4			

DRAWN BY: RCM DATE: 7/30/85
CHECKED BY: J.P.W. DATE: 10/3/85