

**TIP PROJECT: R-5215**

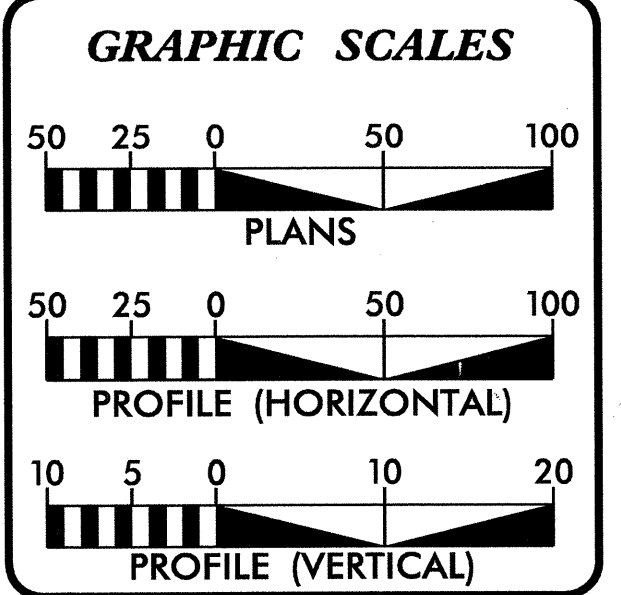
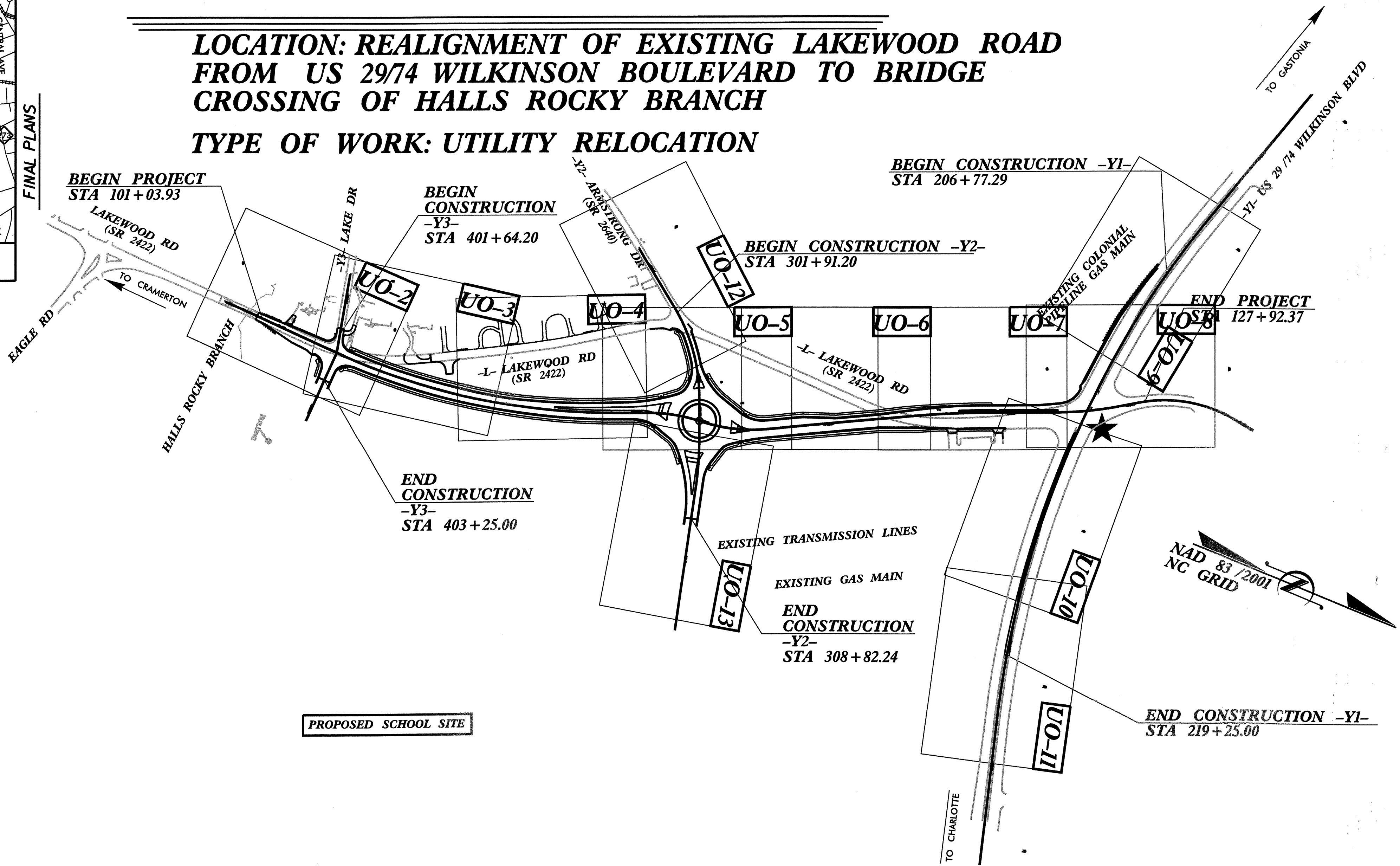
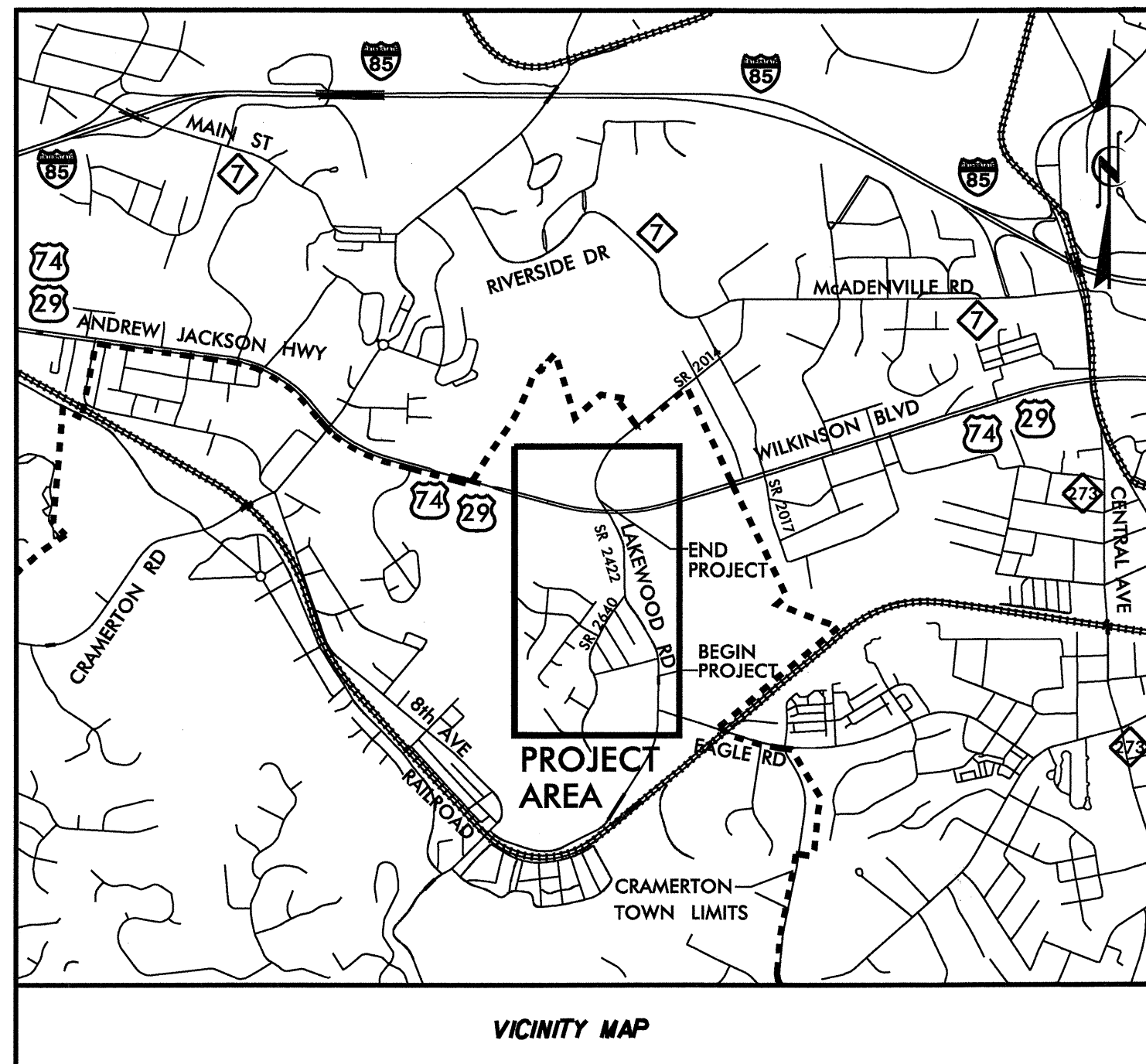
|            |           |
|------------|-----------|
| T.I.P. NO. | SHEET NO. |
| R-5215     | UO-1      |

STATE OF NORTH CAROLINA  
DIVISION OF HIGHWAYS

**UTILITIES BY OTHERS PLANS  
GASTON COUNTY**

**LOCATION: REALIGNMENT OF EXISTING LAKEWOOD ROAD  
FROM US 29/74 WILKINSON BOULEVARD TO BRIDGE  
CROSSING OF HALLS ROCKY BRANCH**

**TYPE OF WORK: UTILITY RELOCATION**



**INDEX OF SHEETS**

| SHEET NO.       | DESCRIPTION                   |
|-----------------|-------------------------------|
| UO-1            | TITLE SHEET                   |
| UO-2 THRU UO-13 | UTILITY BY OTHERS PLAN SHEETS |

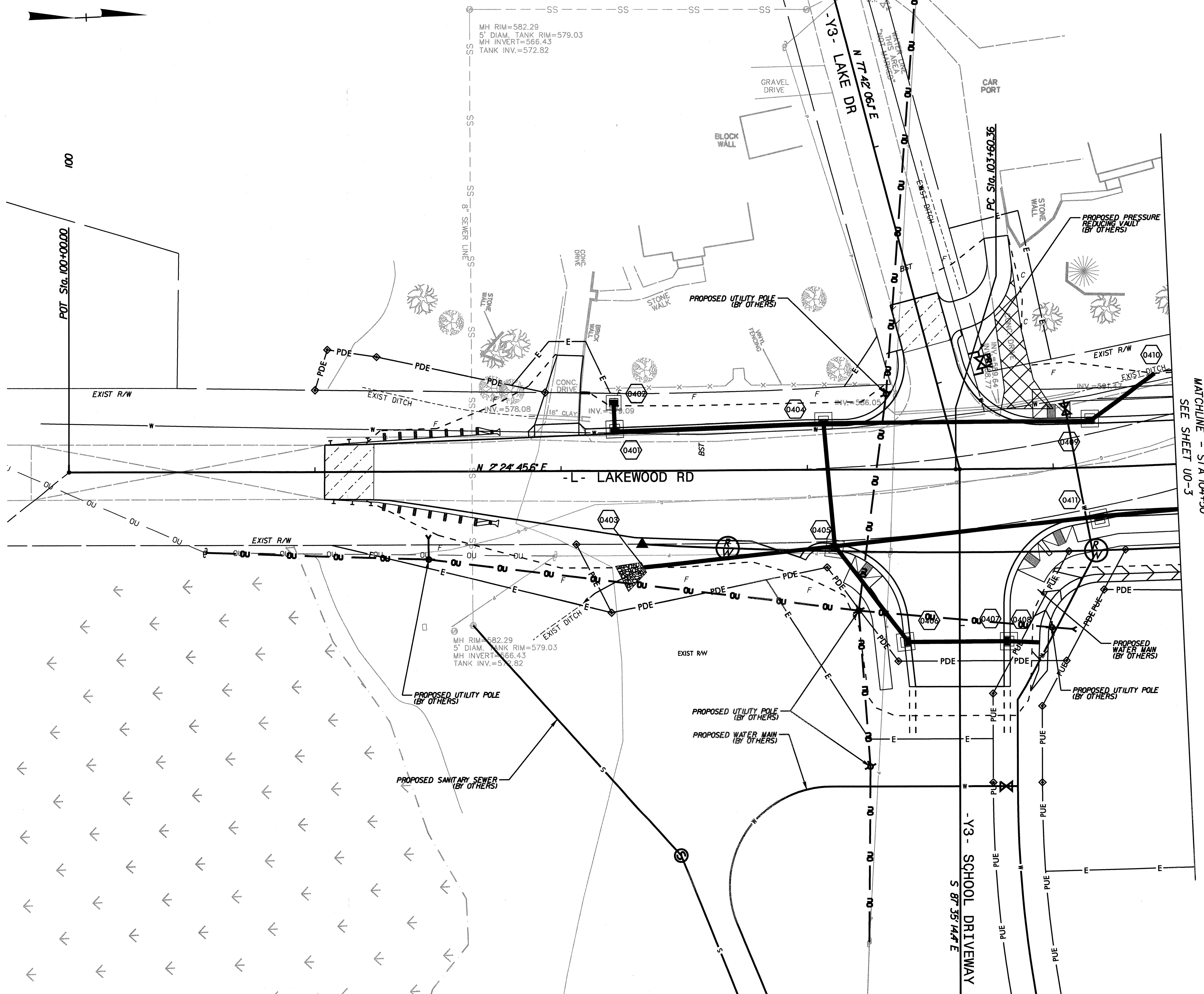
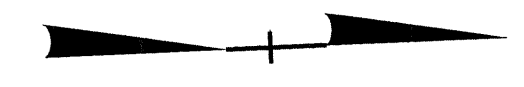
- UTILITY OWNERS ON PROJECT**
- (1) TOWN OF CRAMERTON (WATER & SANITARY SEWER)
  - (2) DUKE ENERGY (POWER)
  - (3) AT&T (TELEPHONE)
  - (4) COLONIAL PIPELINE
  - (5) PSNC ENERGY (NATURAL GAS)
  - (6) TIME WARNER CABLE

PLANS PREPARED FOR THE NCDOT BY:

Kimley-Horn and Associates, Inc.  
© 2011 Site 300, 4651 Charlotte Park Drive  
Charlotte, North Carolina 28217  
NC LICENSE # F-9192

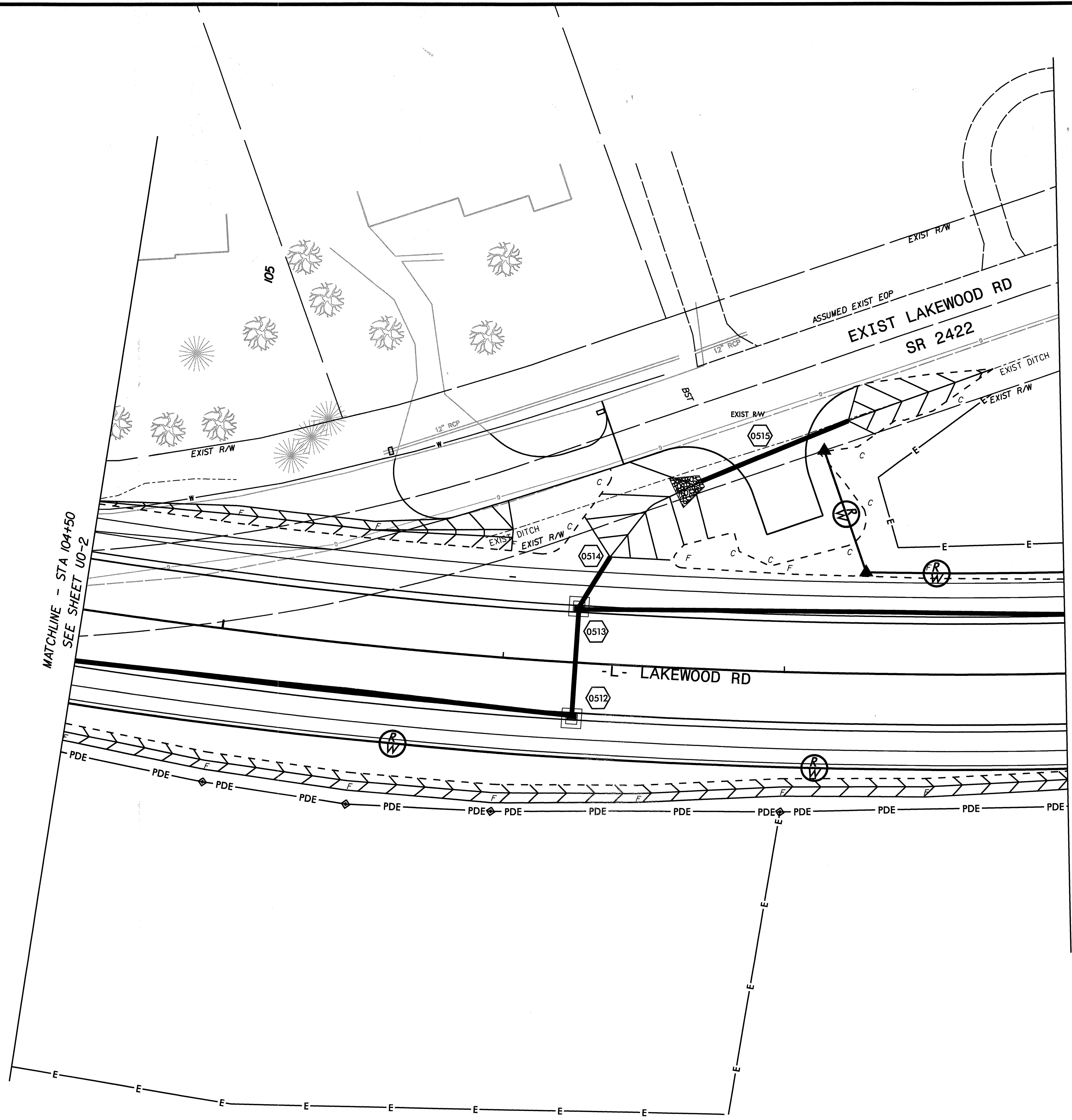
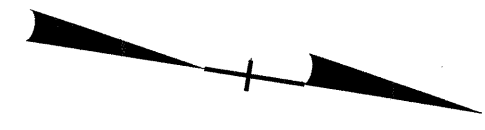
PREPARED IN THE OFFICE OF:  
**DIVISION OF HIGHWAYS  
UTILITIES ENGINEERING  
SECTION**

1591 MAIL SERVICES CENTER  
RALEIGH NC 27699-1591  
PHONE (919) 250-4128  
FAX (919) 250-4119



MATCHLINE - STA 104+50  
SEE SHEET U0-3

557003-R019-UT10.dgn  
3/4/2011

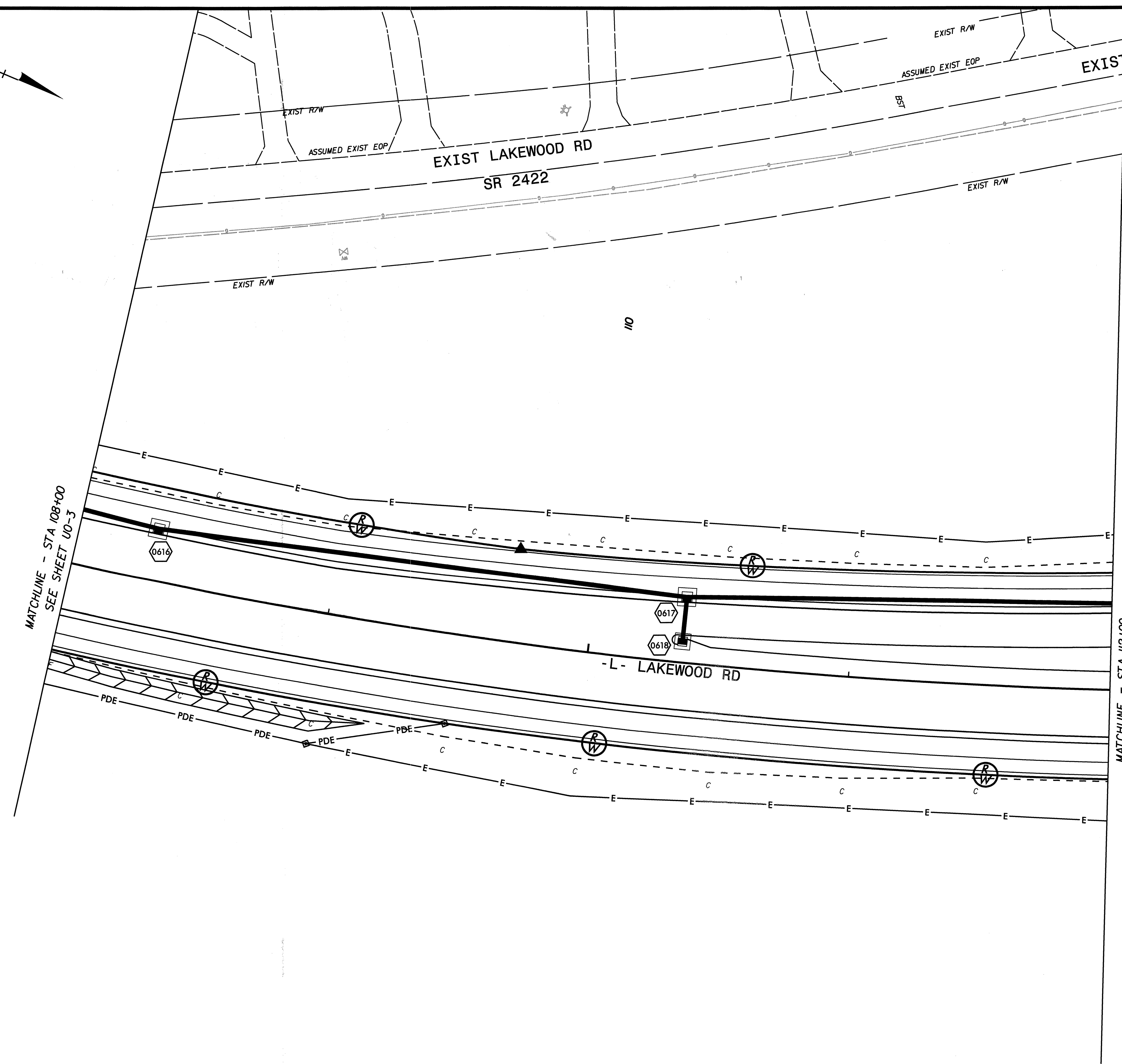
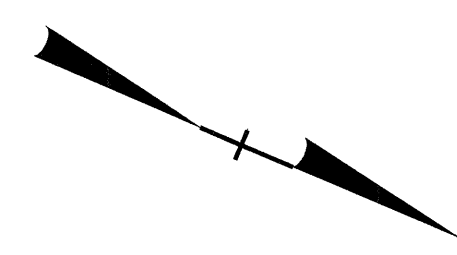


MATCHLINE - STA 104+50  
SEE SHEET U0-2

MATCHLINE - STA 108+00  
SEE SHEET U0-4

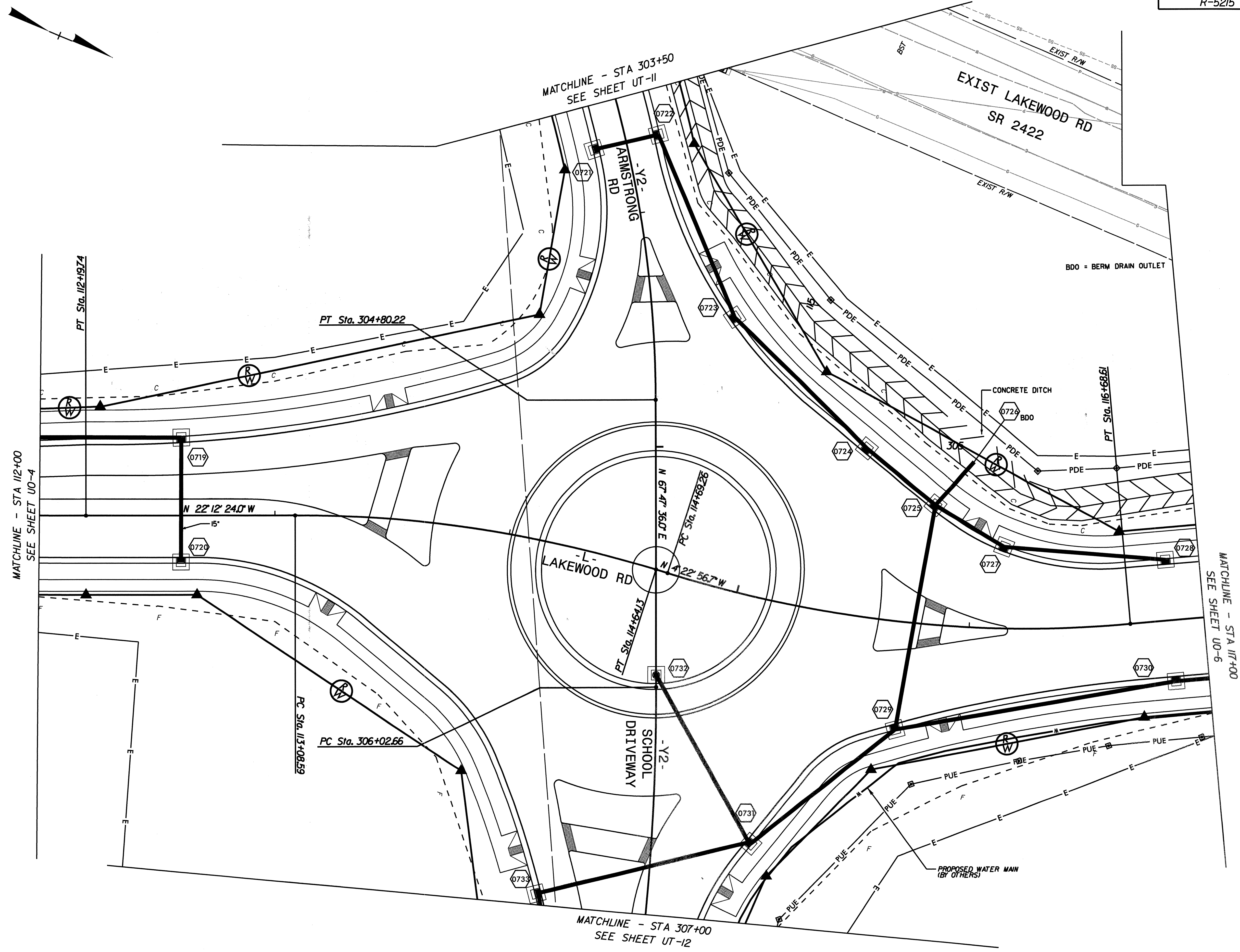
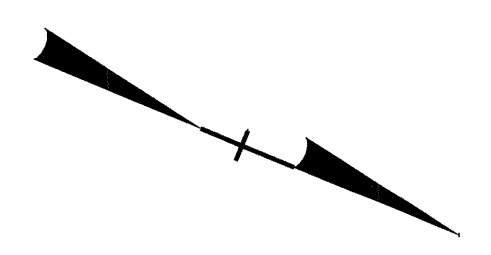
557003-RD19-UT1102.dgn

3/4/2011

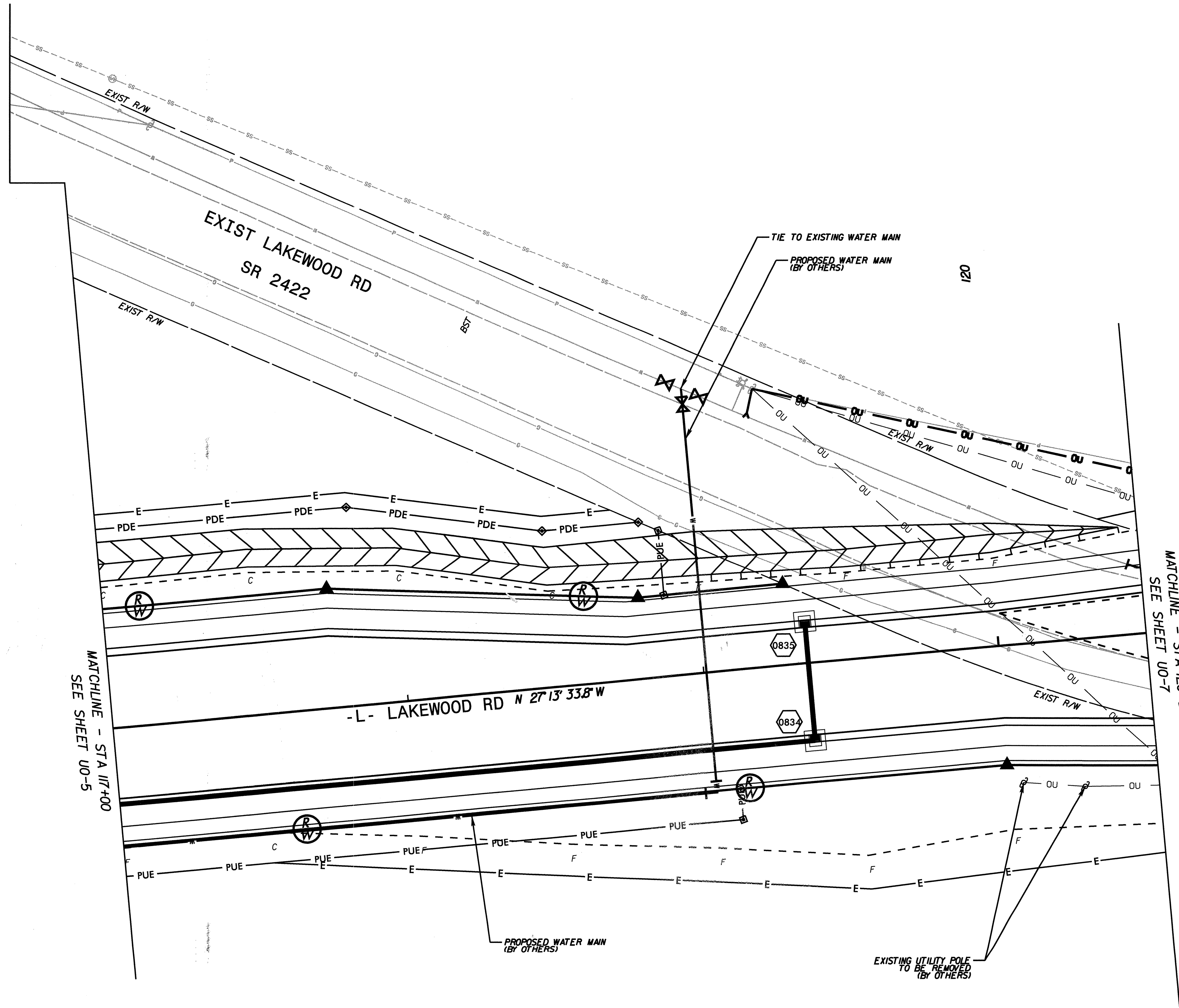


MATCHLINE - STA 108+00  
SEE SHEET U0-3

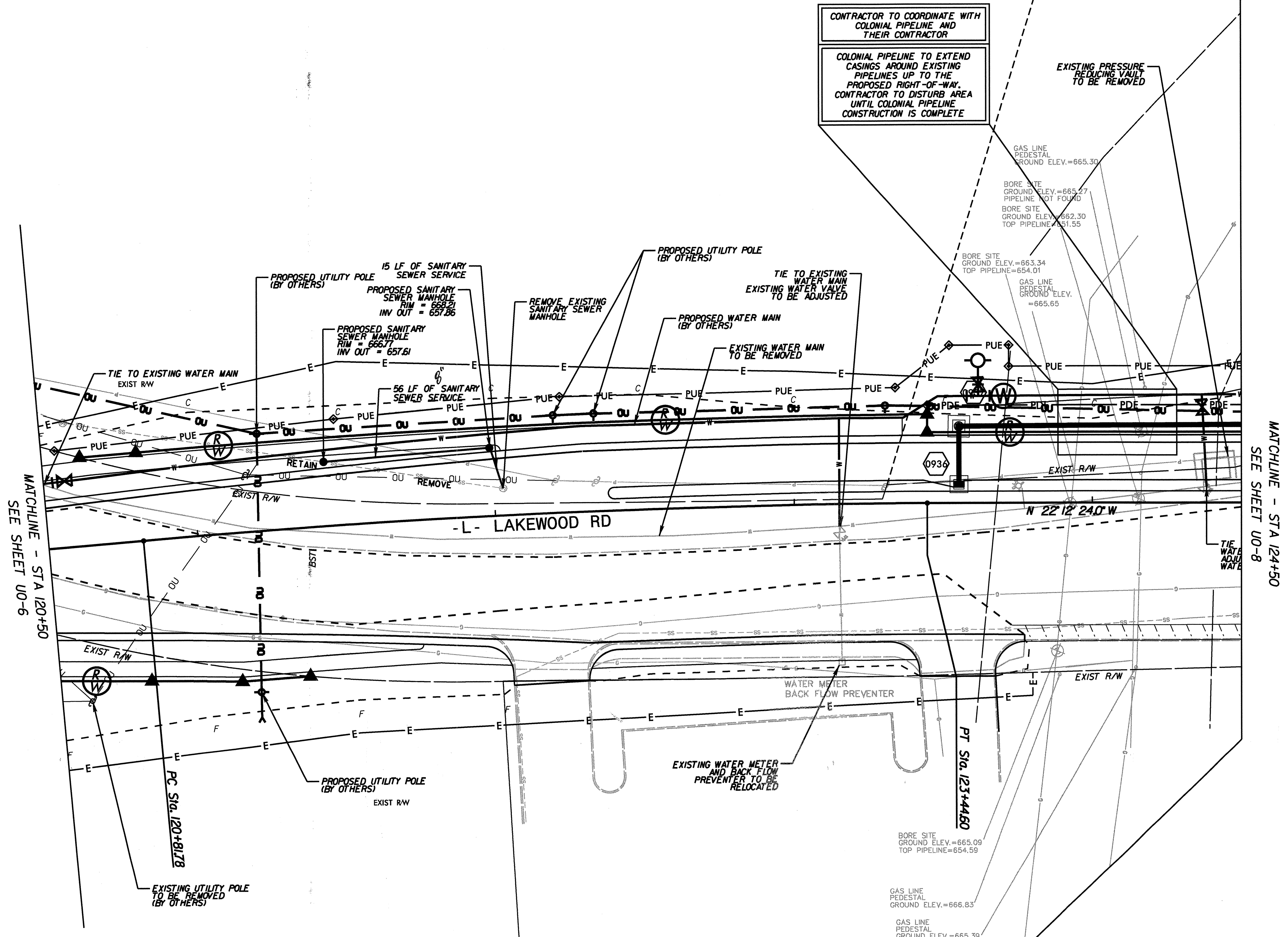
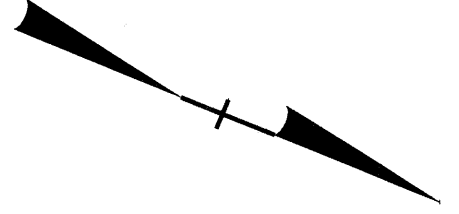
MATCHLINE - STA 112+00  
SEE SHEET U0-5



557003-R019-UT1L04.dgn  
3/4/2011



557003-RD19-UT1L05.dgn  
3/4/2011

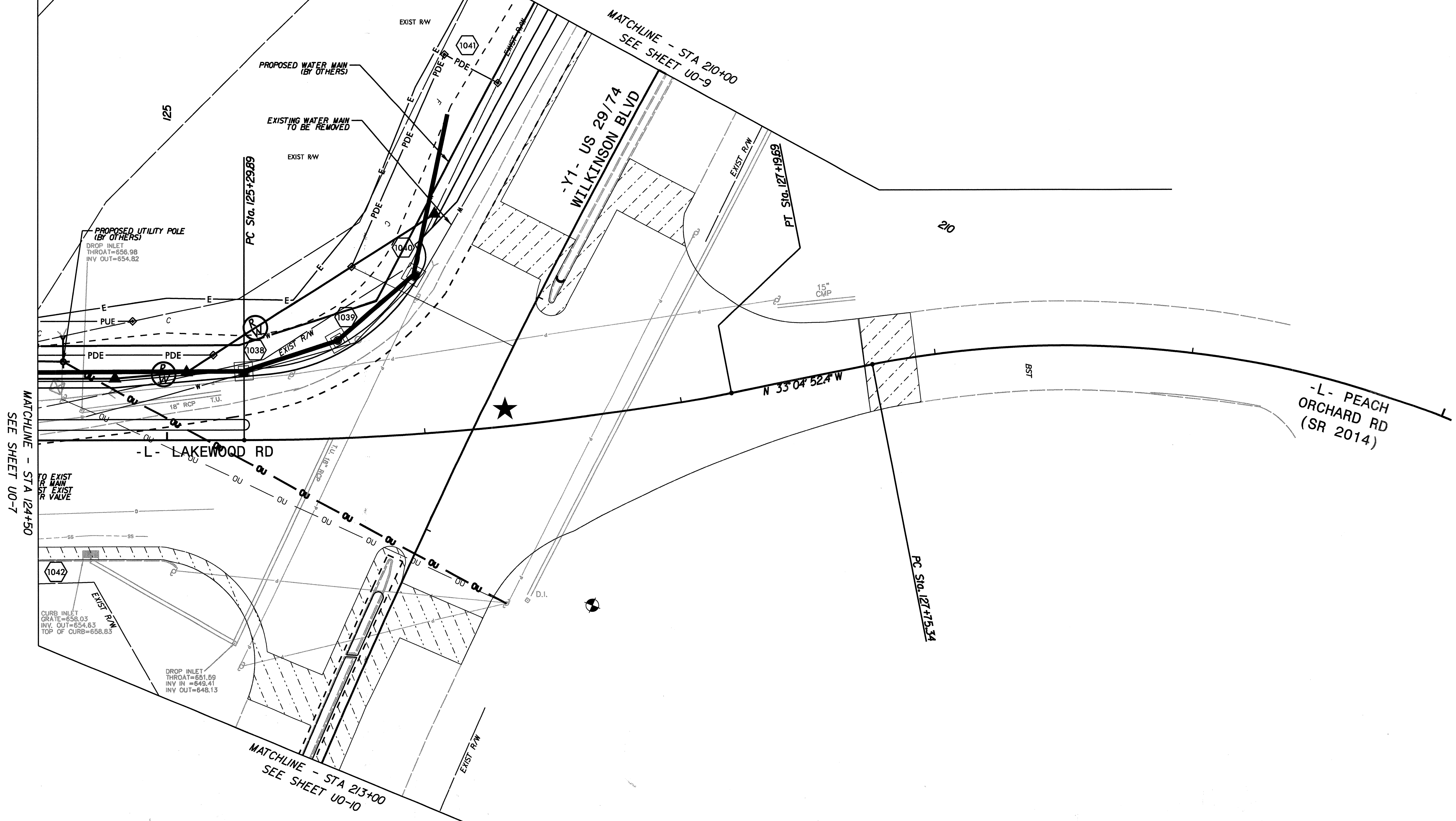
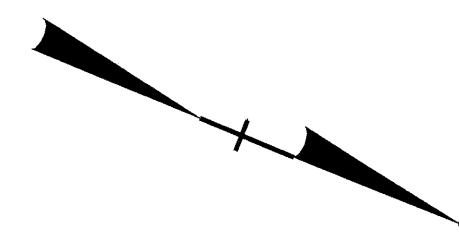


CONTRACTOR TO COORDINATE WITH COLONIAL PIPELINE AND THEIR CONTRACTOR

COLONIAL PIPELINE TO EXTEND CASINGS AROUND EXISTING PIPELINES UP TO THE PROPOSED RIGHT-OF-WAY. CONTRACTOR TO DISTURB AREA UNTIL COLONIAL PIPELINE CONSTRUCTION IS COMPLETE

MATCHLINE - STA 120+50  
SEE SHEET U0-6

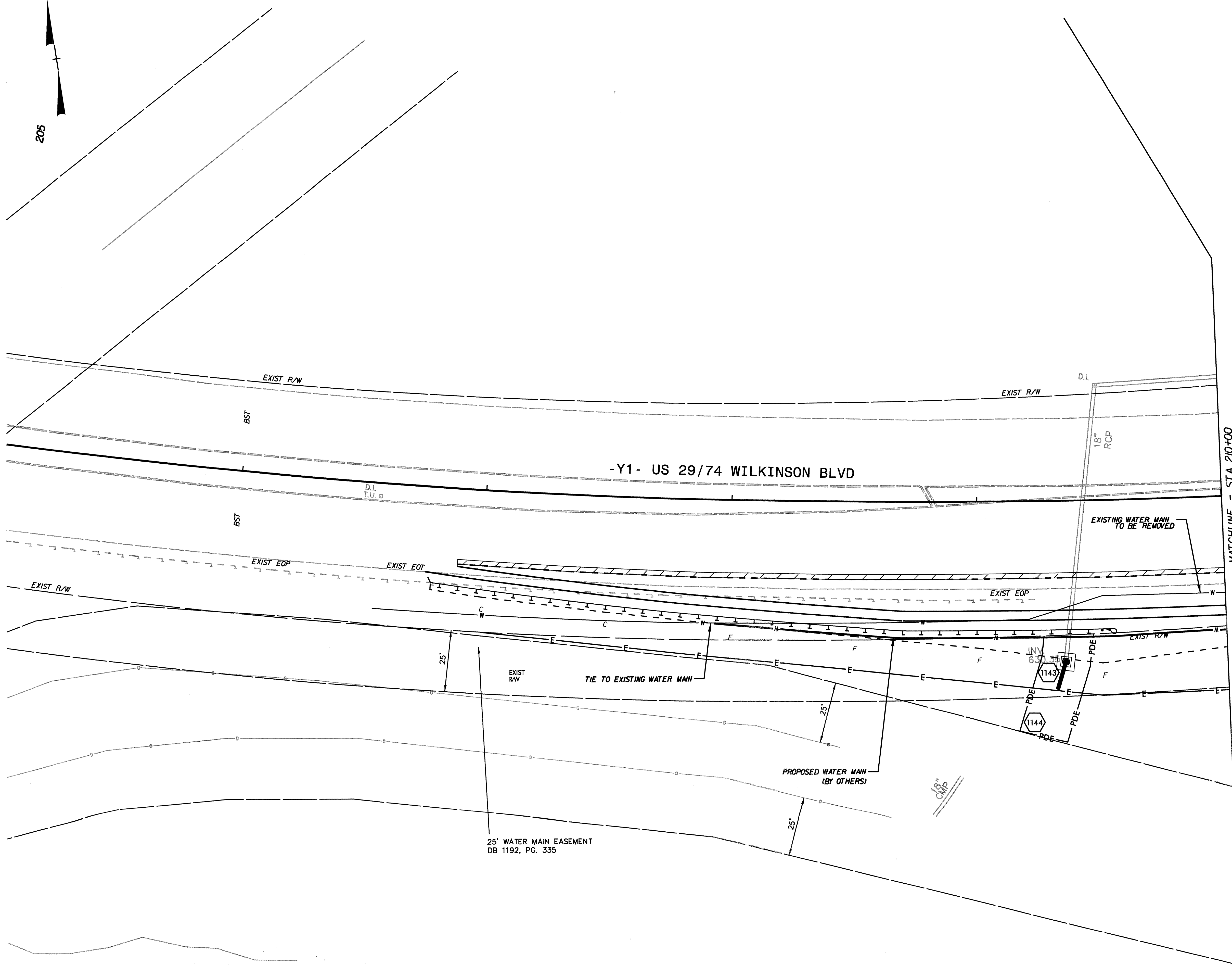
MATCHLINE - STA 124+50  
SEE SHEET U0-8



557003-RD19-UT-LOT.dgn  
 3/4/2011



205

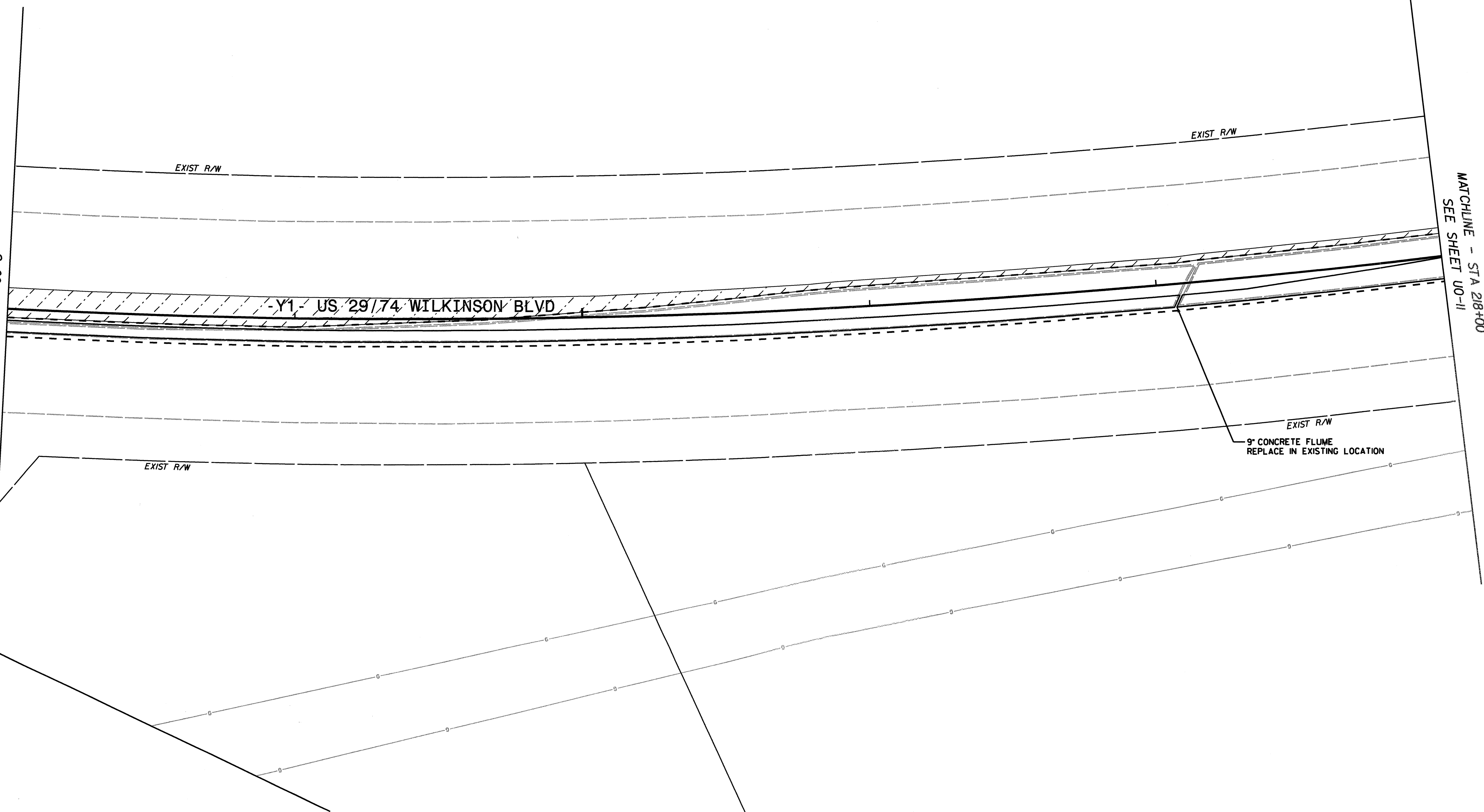


557003-RD19-UT-1108.dwg  
3/4/2011



215

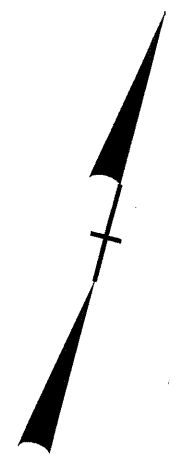
MATCHLINE - STA 213+00  
SEE SHEET U0-8



MATCHLINE - STA 218+00  
SEE SHEET U0-11

557003-RD19-UT-1109.dgn

3/4/2011



220

MATCHLINE - STA 218+00  
SEE SHEET U0-10

PT Sta. 221+17.86

EXIST R/W

EXIST R/W

N 74° 35' 11.9" E

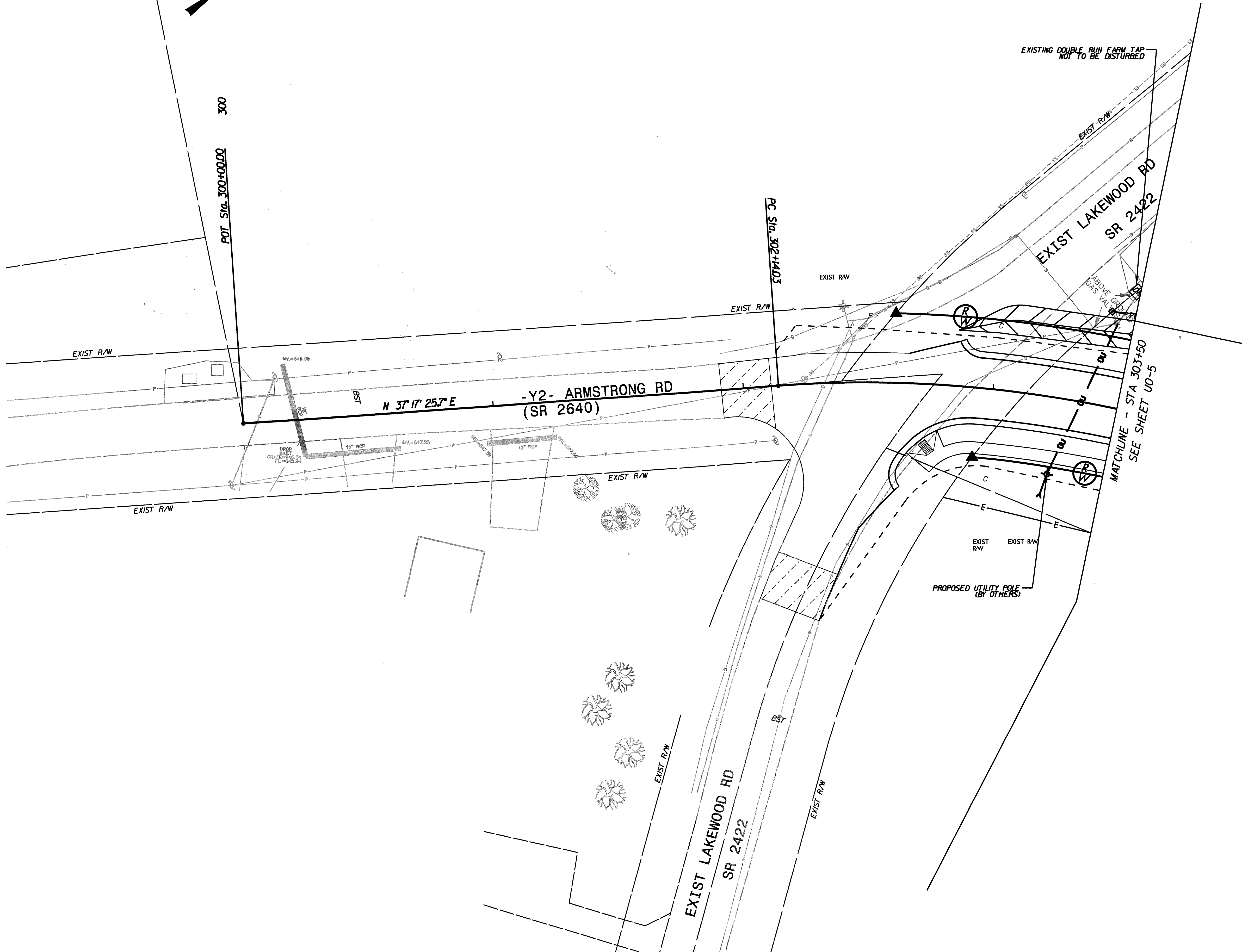
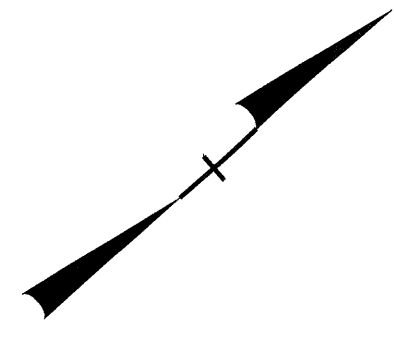
-Y1- US 29/74 WILKINSON BLVD

EXIST R/W

EXIST R/W

557003-R019-UT-1110.dgn

3/4/2011



557003-R019-UT111.dgn  
3/4/2011

