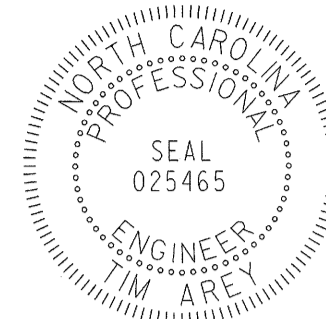


T.I.P.: R-2533CC

**STATE OF NORTH CAROLINA
DEPARTMENT OF TRANSPORTATION**

**PAVEMENT MARKING PLAN
CABARRUS COUNTY**

**LOCATION: NC 49 FROM JUST NORTH OF SR 2630
TO JUST SOUTH OF SR 1006**

<small>TIP NO.</small> R-2533CC	<small>SHEET NO.</small> PMP-1
<small>APPROVED:</small> <i>Tim Arey</i>	
<small>DATE:</small> 01/12/11	
	

ROADWAY STANDARD DRAWING

THE FOLLOWING ROADWAY STANDARDS AS APPEAR IN "ROADWAY STANDARD DRAWINGS" - PROJECT SERVICES UNIT - N.C. DEPARTMENT OF TRANSPORTATION - RALEIGH, N.C., DATED JULY 2006 ARE APPLICABLE TO THIS PROJECT AND BY REFERENCE HEREBY ARE CONSIDERED A PART OF THESE PLANS:

<u>STD. NO.</u>	<u>TITLE</u>
1205.01	PAVEMENT MARKINGS - LINE TYPES AND OFFSETS
1205.02	PAVEMENT MARKINGS - 2 LANE AND MULTILANE ROADWAYS
1205.03	PAVEMENT MARKINGS - INTERCHANGES
1205.04	PAVEMENT MARKINGS - INTERSECTIONS
1205.05	PAVEMENT MARKINGS - TURN LANES
1205.06	PAVEMENT MARKINGS - THRU LANE DROPS
1205.07	PAVEMENT MARKINGS - PEDESTRIAN CROSSINGS
1205.08	PAVEMENT MARKINGS - SYMBOL AND WORD MESSAGES
1205.09	PAVEMENT MARKINGS - PAINTED ISLANDS
1205.10	PAVEMENT MARKINGS - SCHOOL AREAS
1205.12	PAVEMENT MARKINGS - BRIDGES
1250.01	PAVEMENT MARKER SPACING
1251.01	RAISED PAVEMENT MARKERS - TEMPORARY AND PERMANENT
1261.01	GUARDRAIL AND BARRIER DELINEATOR SPACING
1261.02	GUARDRAIL AND BARRIER DELINEATOR TYPES
1262.01	GUARDRAIL END DELINEATION
1264.01	OBJECT MARKERS
1264.02	PLACEMENT OF OBJECT MARKERS
1267.01	FLEXIBLE DELINEATOR INSTALLATION
1267.02	FLEXIBLE DELINEATOR SPACING
1267.03	FLEXIBLE DELINEATOR - INTERCHANGES

INDEX

<u>SHEET NO.</u>	<u>DESCRIPTION</u>
PMP-1	PAVEMENT MARKING PLAN COVER SHEET
PMP-2	PAVEMENT MARKING SCHEDULE
PMP-3-13	PAVEMENT MARKING DETAIL

GENERAL NOTES

THE FOLLOWING GENERAL NOTES APPLY AT ALL TIMES FOR THE DURATION OF THE CONSTRUCTION PROJECT, EXCEPT WHEN OTHERWISE NOTED IN THE PLAN, OR DIRECTED BY THE ENGINEER.

- A) INSTALL PAVEMENT MARKINGS AND PAVEMENT MARKERS ON THE FINAL SURFACE AS FOLLOWS:

ROAD NAME	MARKING	MARKER
ALL	THERMOPLASTIC	PERMANENT RAISED
- B) TIE PROPOSED PAVEMENT MARKING LINES TO EXISTING PAVEMENT MARKING LINES.
- C) REMOVE/REPLACE ANY CONFLICTING/DAMAGED PAVEMENT MARKINGS AND MARKERS.
- D) STOPBAR LOCATION AT NON-SIGNALIZED INTERSECTIONS MAY BE ADJUSTED AS DIRECTED BY THE ENGINEER.
- E) REMOVE ALL RESIDUE AND SURFACE LAITANCE BY ACCEPTABLE METHODS ON THE BRIDGE DECKS PRIOR TO PLACING COLD APPLIED PLASTIC PAVEMENT MARKING.

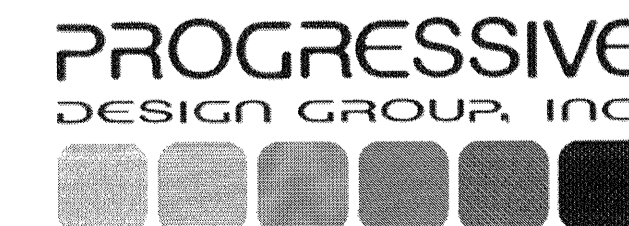
PLAN REVIEWED BY: N.C.D.O.T. SIGNING AND DELINEATION UNIT

CHRIS HOWARD SIGNING & DELINEATION STANDARDS ENGINEER
MARK MANRIQUEZ SIGNING & DELINEATION PROJECT DESIGN ENGINEER

PLAN PREPARED BY: PROGRESSIVE DESIGN GROUP, INC.

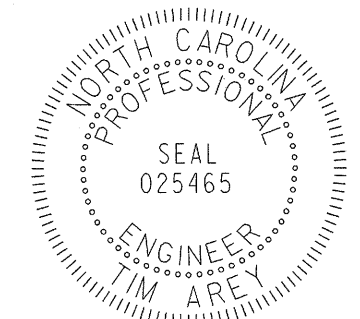
TIM AREY, P.E. PROJECT MANAGER
LARRY ASHLEY ENGINEER

PLAN PREPARED IN THE OFFICE OF



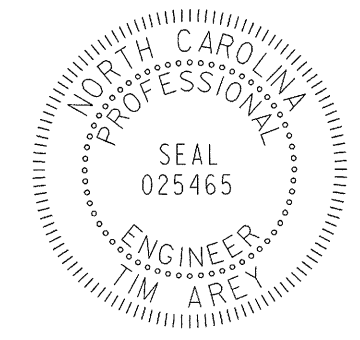
ENGINEERS • CONSULTANTS
CHARLOTTE, NC 704.573.3005

TIP NO.	SHEET NO.
R - 2533CC	PMP - 2
APPROVED: <i>Jim Gray</i>	
DATE: 01/12/11	
SEAL	



PAVEMENT MARKING SCHEDULE

SYMB	DESCRIPTION	PAY ITEM QUANTITY	TOTAL
FINAL PAVEMENT MARKINGS			
COLD APPLIED PLASTIC (100MM) Type 1-Permanent Std			
CA	WHITE EDGELINE	166 M	
CC	3 M. WHITE SKIP	42 M	
CD	0.5 M. WHITE MINISKIP	6 M	
	TOTAL		214 M
THERMOPLASTIC(100MM, 2.3MM)			
TA	WHITE EDGELINE	10965 M	
TB	YELLOW EDGELINE	8151 M	
	TOTAL		19116 M
THERMOPLASTIC(100MM, 3.1MM)			
TC	3 M. WHITE SKIP	528 M	
TD	0.5 M. WHITE MINISKIP	22 M	
TE	WHITE SOLID LANE LINE	364 M	
TI	YELLOW DOUBLE CENTER	8928 M	
	TOTAL		9842 M
COLD APPLIED PLASTIC (200MM) Type 1-Permanent Std			
CR	WHITE GORELINE	130 M	
CS	WHITE DIAGONAL	10 M	
	TOTAL		140 M
THERMOPLASTIC(200MM, 2.3MM)			
TP	WHITE GORELINE	1520 M	
TQ	WHITE DIAGONAL	212 M	
TT	YELLOW DIAGONAL	394 M	
	TOTAL		2126 M
THERMOPLASTIC(200MM, 3.1MM)			
TV	WHITE CROSSWALK LINE	78 M	
	TOTAL		78 M
THERMOPLASTIC(600MM, 3.1MM)			
T2	WHITE STOPBAR	142 M	
T3	WHITE CROSSWALK LINE	290 M	
	TOTAL		432 M
THERMOPLASTIC PAVEMENT MARKING CHARACTER (3.1MM)			
UI	ALPHANUMERIC CHAR.	20 EA	
	TOTAL		20 EA
THERMOPLASTIC PAVEMENT MARKING SYMBOLS (2.3MM)			
UA	LEFT TURN ARROW	25 EA	
UB	RIGHT TURN ARROW	17 EA	
UC	STRAIGHT ARROW	27 EA	
UD	COMBO. STRAIGHT/LEFT	2 EA	
UE	COMBO. STRAIGHT/RIGHT	2 EA	
UF	COMBO. LEFT/RIGHT	1 EA	
UG	LEFT/RIGHT/STRAIGHT	2 EA	
	TOTAL		76 EA
PERMANENT RAISED PAVEMENT MARKERS			
MA	YELLOW & YELLOW	183 EA	
MB	CRYSTAL & RED	452 EA	
	TOTAL		635 EA

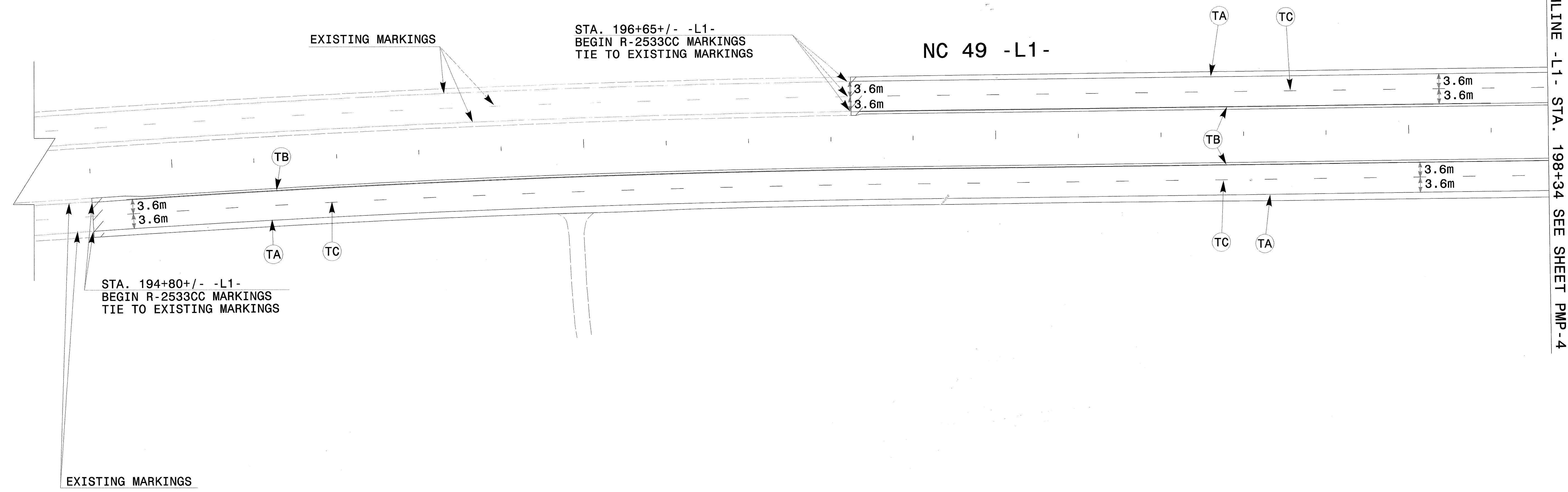
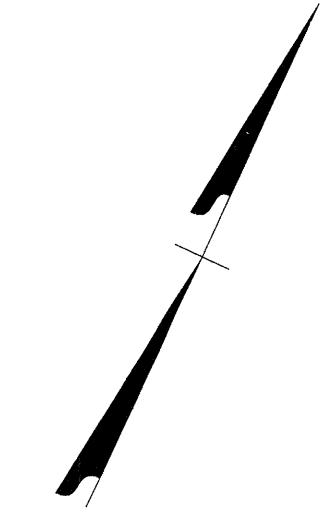
TIP NO. R-2533CC	SHEET NO. PMP-3
APPROVED: <i>Jim Arey</i>	
DATE: 01/12/11	
SEAL	
	

195+00

196+00

197+00

198+00

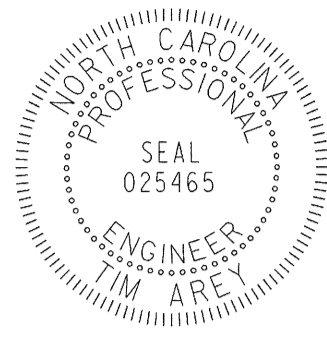


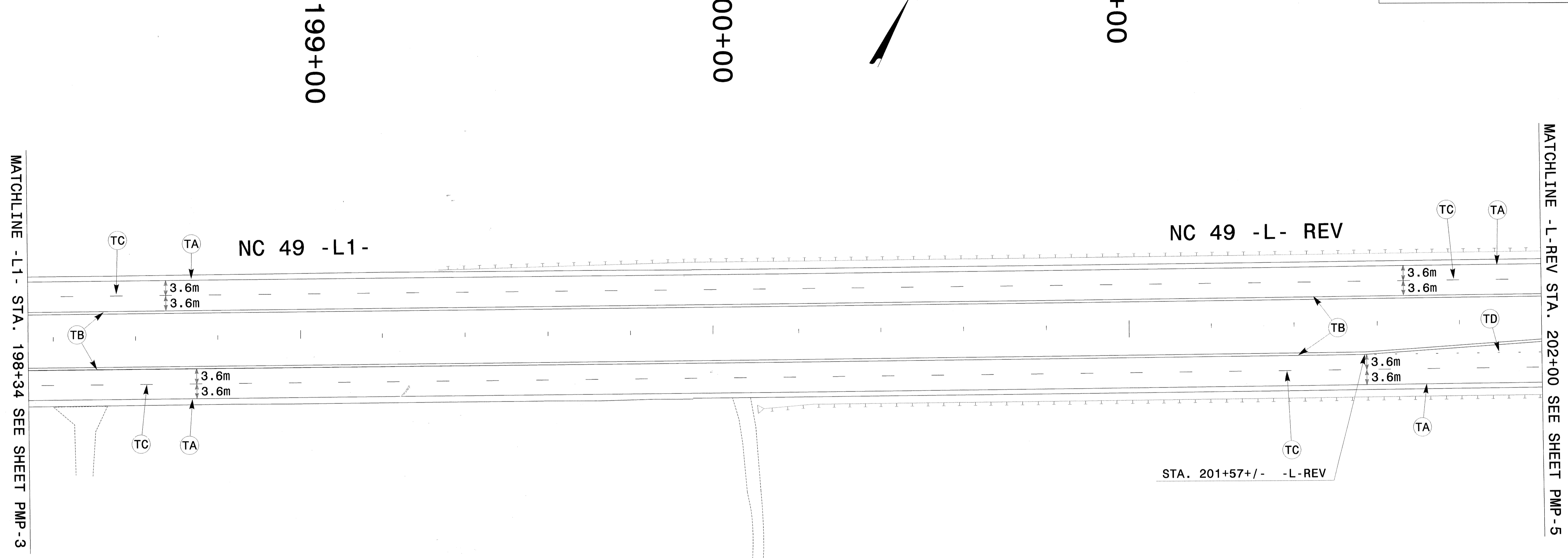
- NOTES:
- 1) SEE SHEET PM-2 FOR FINAL PAVEMENT MARKING SCHEDULE.
 - 2) PAVEMENT MARKINGS, SYMBOLS, AND CHARACTERS ARE TO BE MARKED ACCORDING TO THE ROADWAY STANDARD DRAWINGS UNLESS OTHERWISE NOTED IN THE PLANS.
 - 3) PAVEMENT MARKERS ARE TO BE SPACED ACCORDING TO THE ROADWAY STANDARD DRAWINGS.

PLAN PREPARED IN THE OFFICE OF
PROGRESSIVE
 DESIGN GROUP, INC.

 ENGINEERS • CONSULTANTS
 CHARLOTTE, NC 704.573.5005

PAVEMENT MARKING DETAIL

TIP NO. R-2533CC	SHEET NO. PMP-4
APPROVED: <i>Tim Arey</i>	
DATE: 01/12/11	
SEAL	
	




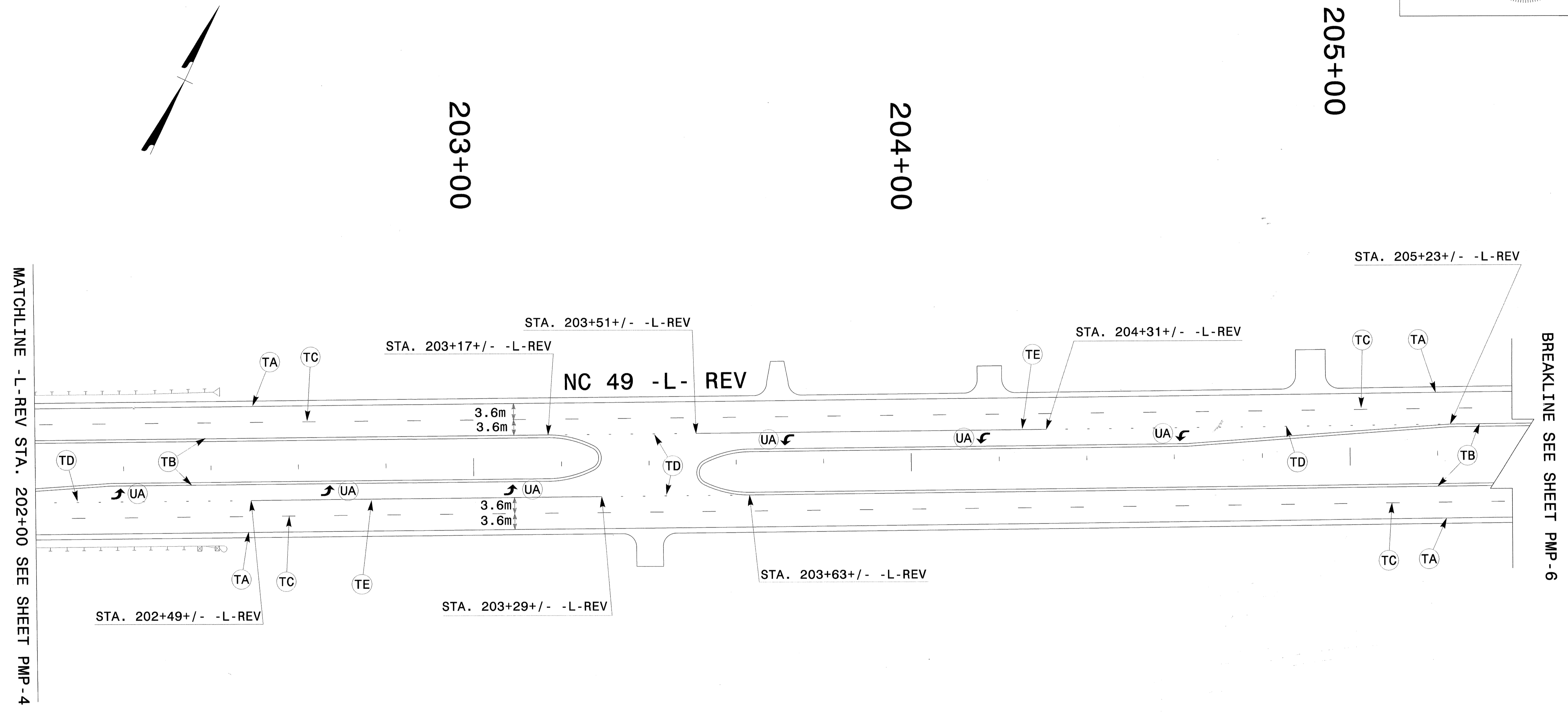
MATCHLINE -L1- STA. 198+34 SEE SHEET PMP-3

MATCHLINE -L-REV STA. 202+00 SEE SHEET PMP-5

- NOTES:
- 1) SEE SHEET PM-2 FOR FINAL PAVEMENT MARKING SCHEDULE.
 - 2) PAVEMENT MARKINGS, SYMBOLS, AND CHARACTERS ARE TO BE MARKED ACCORDING TO THE ROADWAY STANDARD DRAWINGS UNLESS OTHERWISE NOTED IN THE PLANS.
 - 3) PAVEMENT MARKERS ARE TO BE SPACED ACCORDING TO THE ROADWAY STANDARD DRAWINGS.

PAVEMENT MARKING DETAIL

TIP NO. R-2533CC	SHEET NO. PMP-5
APPROVED: <i>Jim Arty</i>	DATE: 01/12/11
SEAL	
	



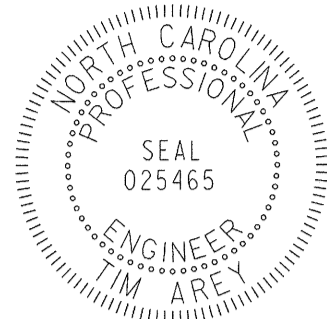
PLAN PREPARED IN THE OFFICE OF
PROGRESSIVE
 DESIGN GROUP, INC.

 ENGINEERS • CONSULTANTS
 CHARLOTTE, NC 704.573.3003

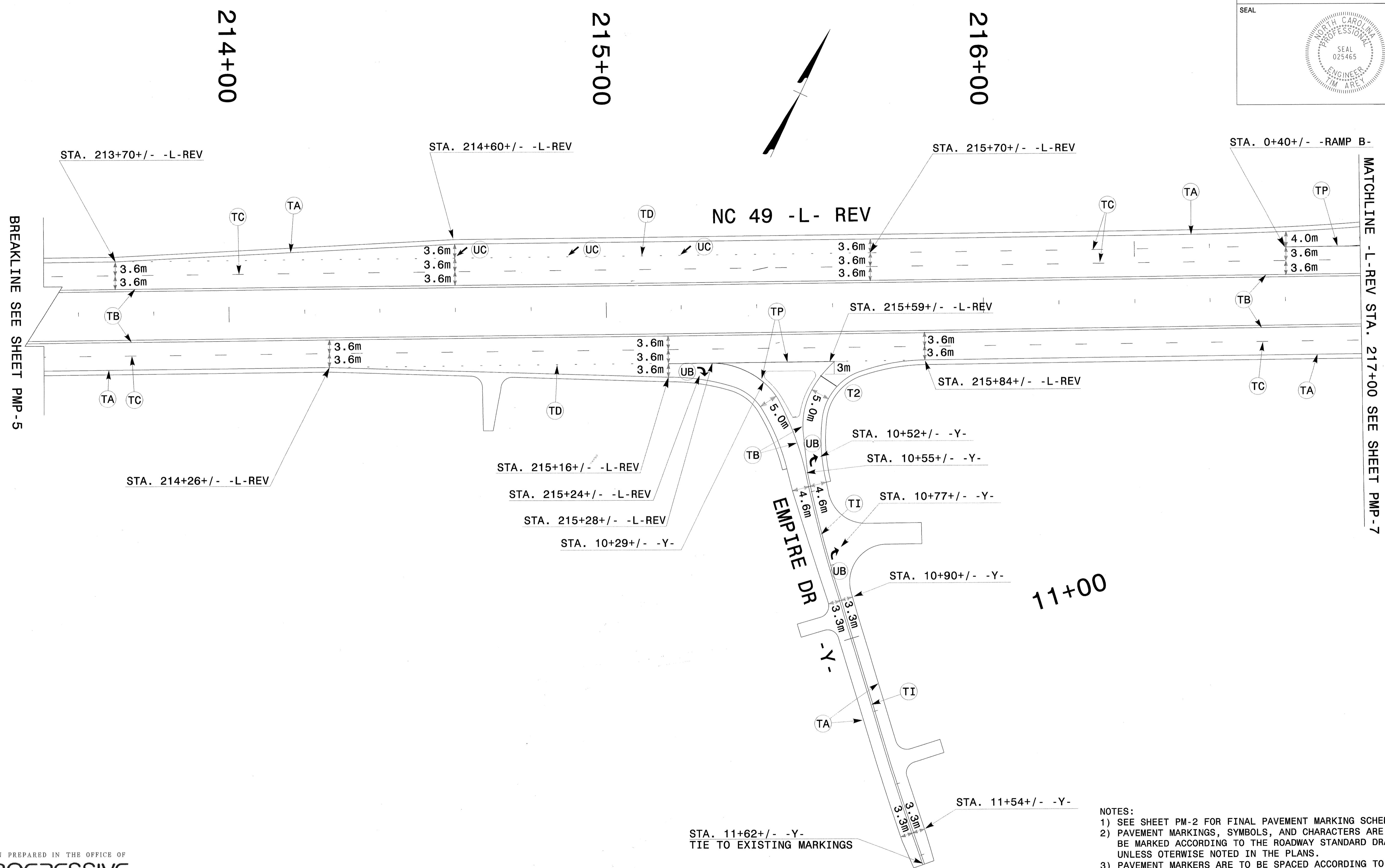
- NOTES:
- 1) SEE SHEET PM-2 FOR FINAL PAVEMENT MARKING SCHEDULE.
 - 2) PAVEMENT MARKINGS, SYMBOLS, AND CHARACTERS ARE TO BE MARKED ACCORDING TO THE ROADWAY STANDARD DRAWINGS UNLESS OTHERWISE NOTED IN THE PLANS.
 - 3) PAVEMENT MARKERS ARE TO BE SPACED ACCORDING TO THE ROADWAY STANDARD DRAWINGS.

PAVEMENT MARKING DETAIL

TIP NO. R-2533CC	SHEET NO. PMP-6
APPROVED: <i>Tim Arey</i>	
DATE: 01/12/11	
SEAL	



SEAL
025465
ENGINEER
TIM AREY




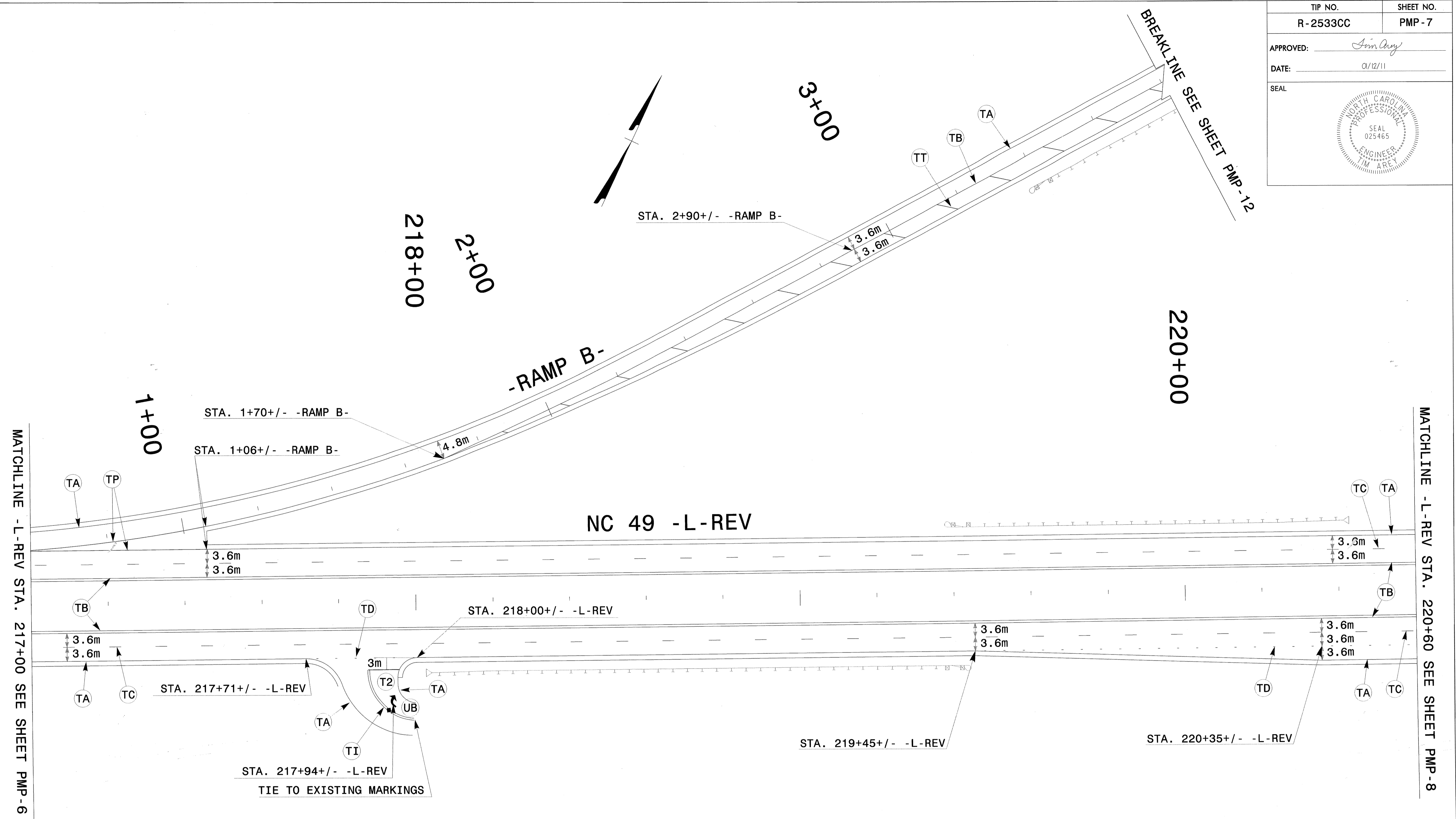
BREAKLINE SEE SHEET PMP-5

MATCHLINE -L-REV STA. 217+00 SEE SHEET PMP-7

- NOTES:
- 1) SEE SHEET PM-2 FOR FINAL PAVEMENT MARKING SCHEDULE.
 - 2) PAVEMENT MARKINGS, SYMBOLS, AND CHARACTERS ARE TO BE MARKED ACCORDING TO THE ROADWAY STANDARD DRAWINGS UNLESS OTHERWISE NOTED IN THE PLANS.
 - 3) PAVEMENT MARKERS ARE TO BE SPACED ACCORDING TO THE ROADWAY STANDARD DRAWINGS.

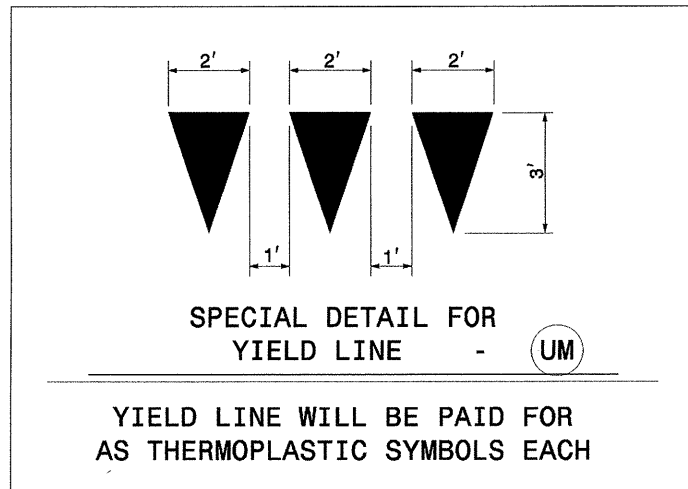
PAVEMENT MARKING DETAIL

TIP NO. R-2533CC	SHEET NO. PMP-7
APPROVED: <i>Jim Arey</i>	
DATE: 01/12/11	
SEAL	

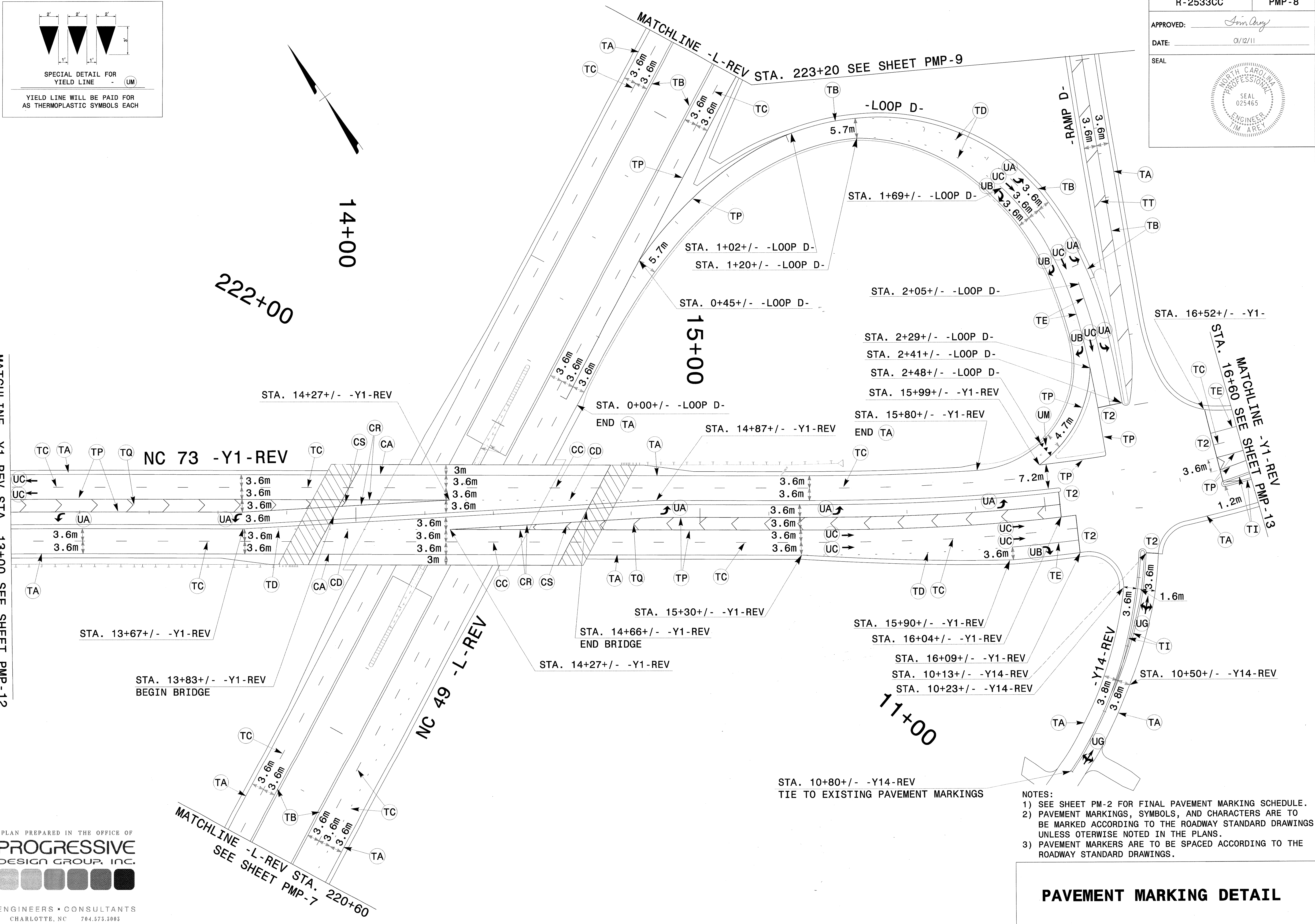


- NOTES:
- 1) SEE SHEET PM-2 FOR FINAL PAVEMENT MARKING SCHEDULE.
 - 2) PAVEMENT MARKINGS, SYMBOLS, AND CHARACTERS ARE TO BE MARKED ACCORDING TO THE ROADWAY STANDARD DRAWINGS UNLESS OTHERWISE NOTED IN THE PLANS.
 - 3) PAVEMENT MARKERS ARE TO BE SPACED ACCORDING TO THE ROADWAY STANDARD DRAWINGS.

PAVEMENT MARKING DETAIL



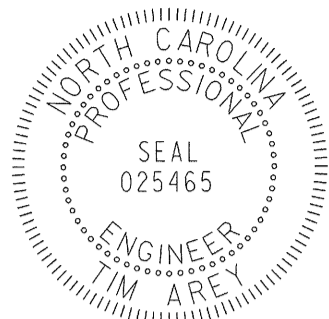
MATCHLINE -Y1-REV STA. 13+00 SEE SHEET PMP-12

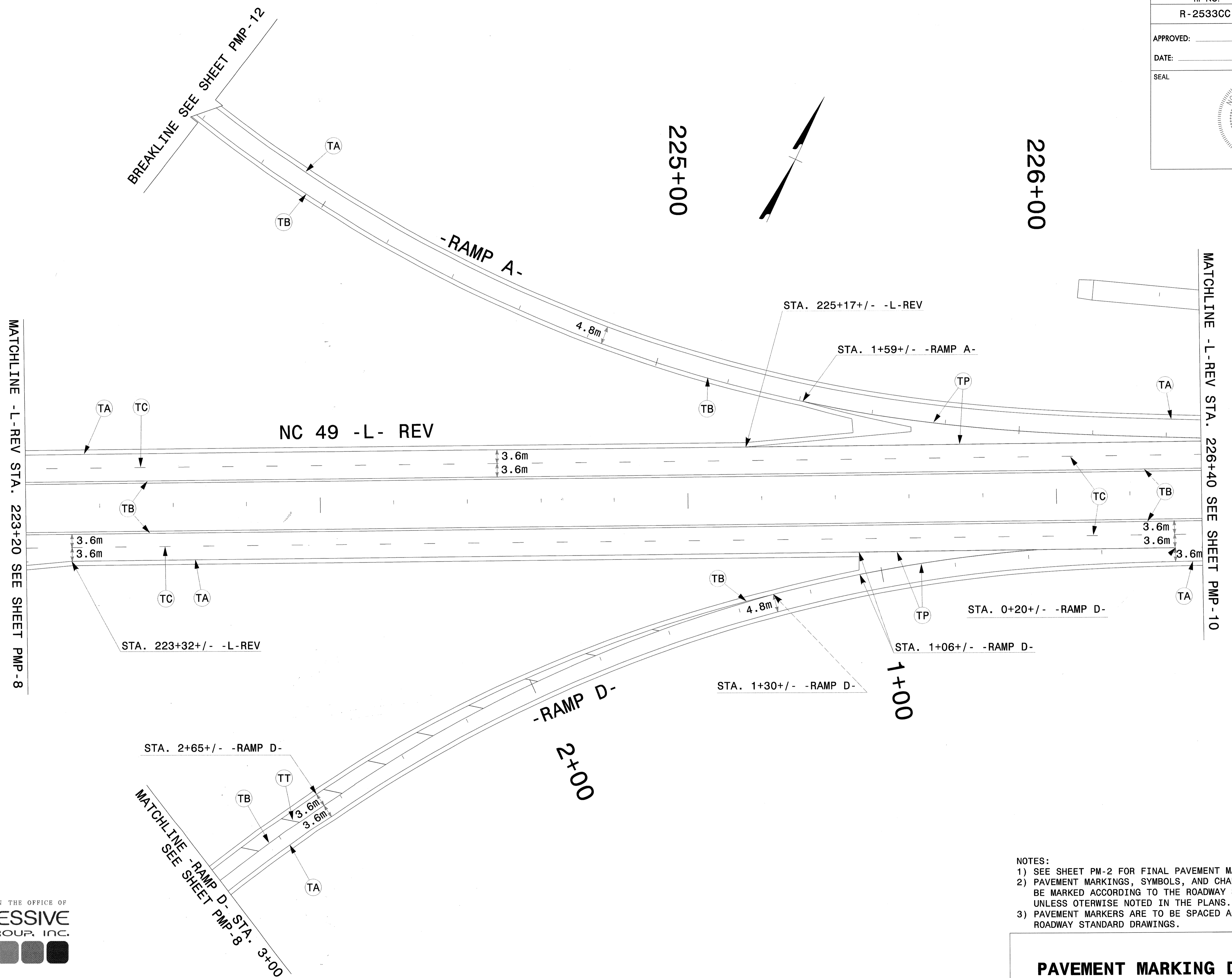


STA. 10+80+/- -Y14-REV
 TIE TO EXISTING PAVEMENT MARKINGS

- NOTES:
- 1) SEE SHEET PM-2 FOR FINAL PAVEMENT MARKING SCHEDULE.
 - 2) PAVEMENT MARKINGS, SYMBOLS, AND CHARACTERS ARE TO BE MARKED ACCORDING TO THE ROADWAY STANDARD DRAWINGS UNLESS OTHERWISE NOTED IN THE PLANS.
 - 3) PAVEMENT MARKERS ARE TO BE SPACED ACCORDING TO THE ROADWAY STANDARD DRAWINGS.

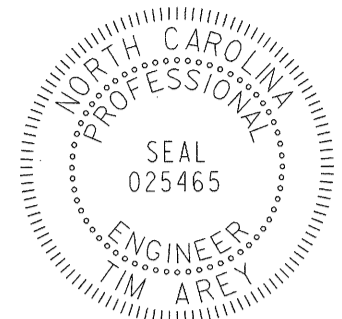
PAVEMENT MARKING DETAIL

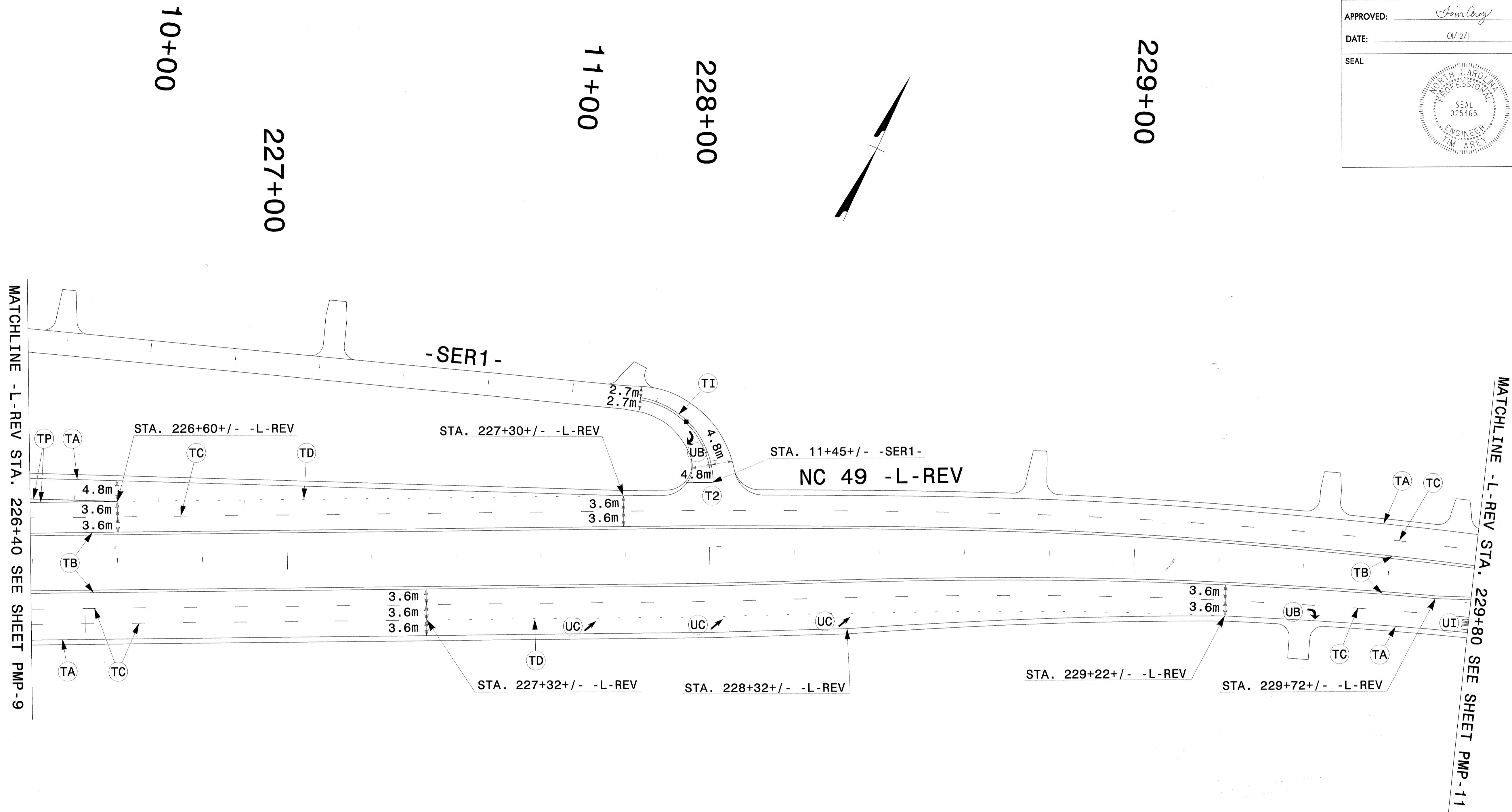
TIP NO. R - 2533CC	SHEET NO. PMP - 9
APPROVED: <i>Jim Gray</i>	
DATE: 01/12/11	
SEAL	



- NOTES:
- 1) SEE SHEET PM-2 FOR FINAL PAVEMENT MARKING SCHEDULE.
 - 2) PAVEMENT MARKINGS, SYMBOLS, AND CHARACTERS ARE TO BE MARKED ACCORDING TO THE ROADWAY STANDARD DRAWINGS UNLESS OTHERWISE NOTED IN THE PLANS.
 - 3) PAVEMENT MARKERS ARE TO BE SPACED ACCORDING TO THE ROADWAY STANDARD DRAWINGS.

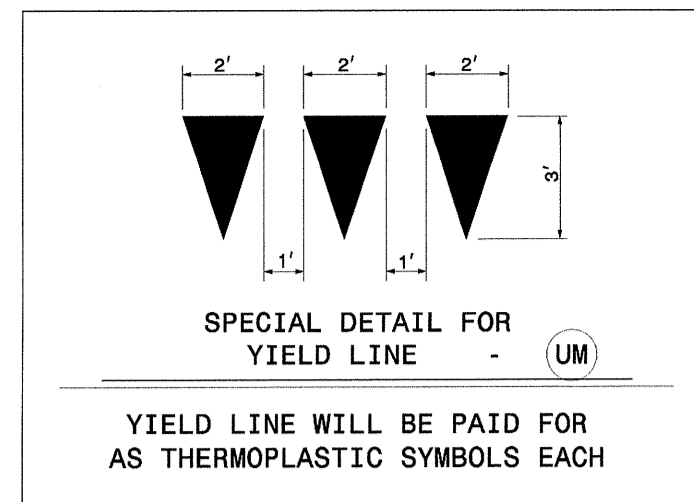
PAVEMENT MARKING DETAIL

TIP NO. R-2533CC	SHEET NO. PMP-10
APPROVED: <i>Jim Arvey</i>	
DATE: 01/12/11	
SEAL	
	



- NOTES:
- 1) SEE SHEET PM-2 FOR FINAL PAVEMENT MARKING SCHEDULE.
 - 2) PAVEMENT MARKINGS, SYMBOLS, AND CHARACTERS ARE TO BE MARKED ACCORDING TO THE ROADWAY STANDARD DRAWINGS UNLESS OTHERWISE NOTED IN THE PLANS.
 - 3) PAVEMENT MARKERS ARE TO BE SPACED ACCORDING TO THE ROADWAY STANDARD DRAWINGS.

PAVEMENT MARKING DETAIL

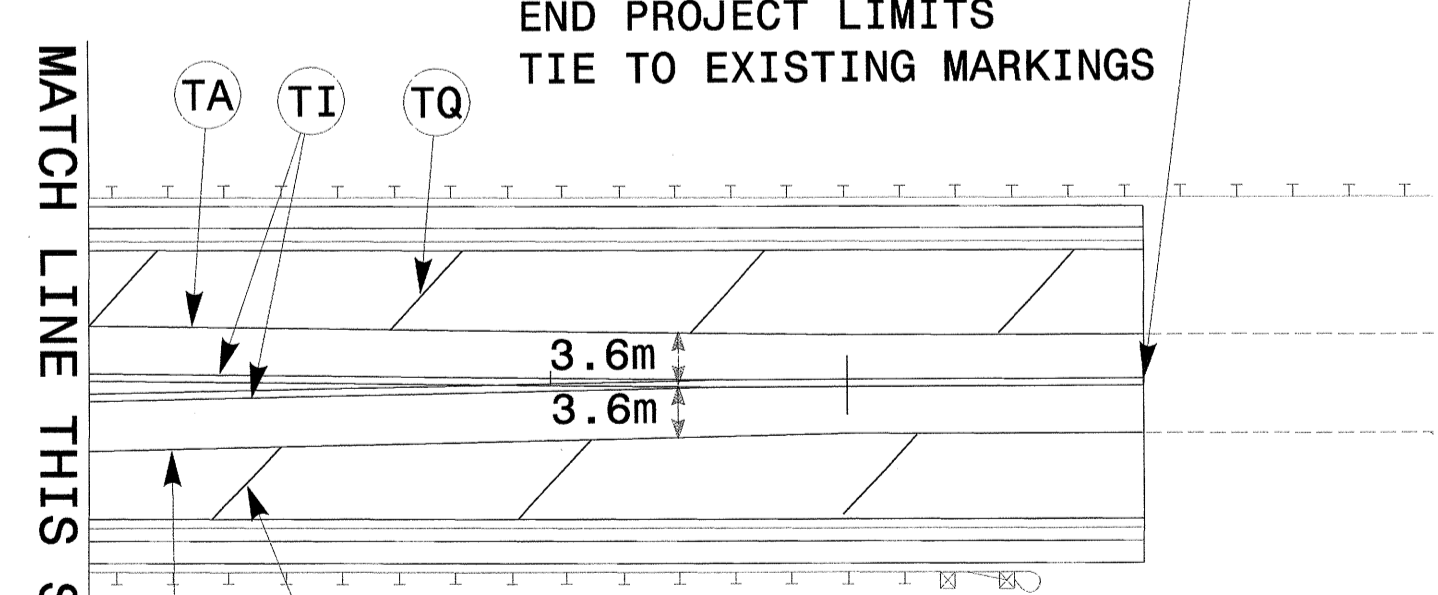
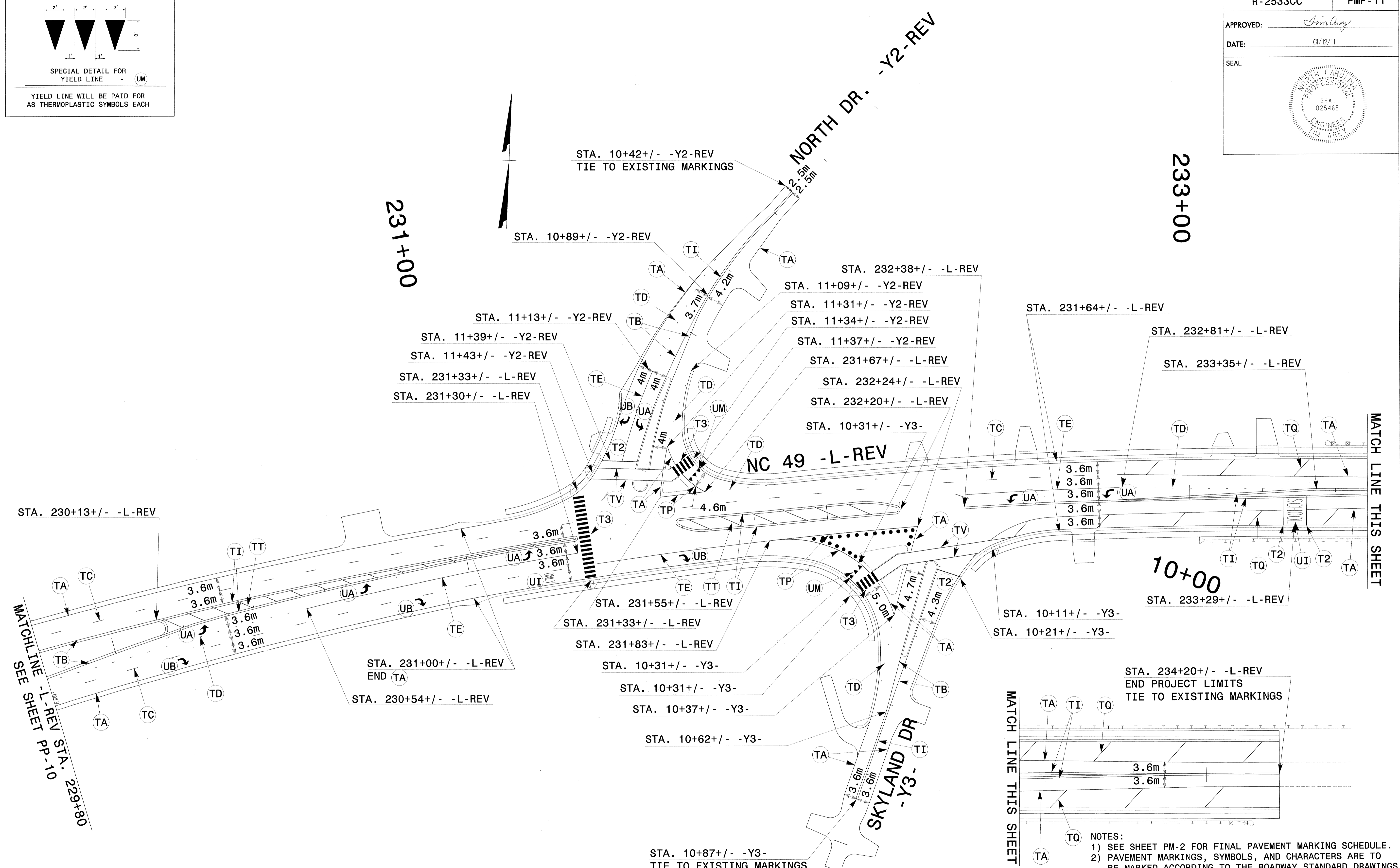


STA. 230+13+/- -L-REV
 MATCHLINE SEE SHEET P-10
 STA. 229+80

231+00

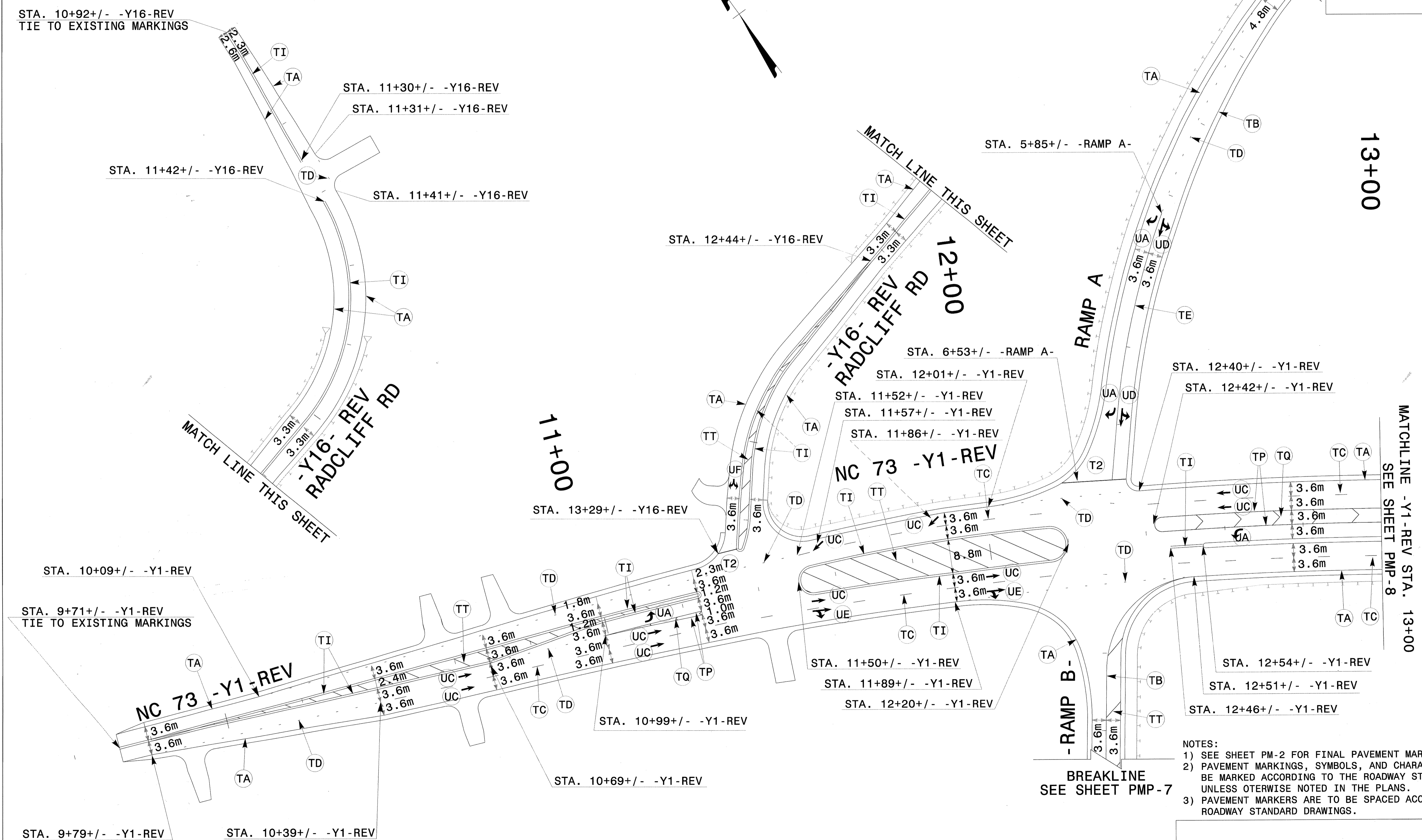
233+00

MATCH LINE THIS SHEET



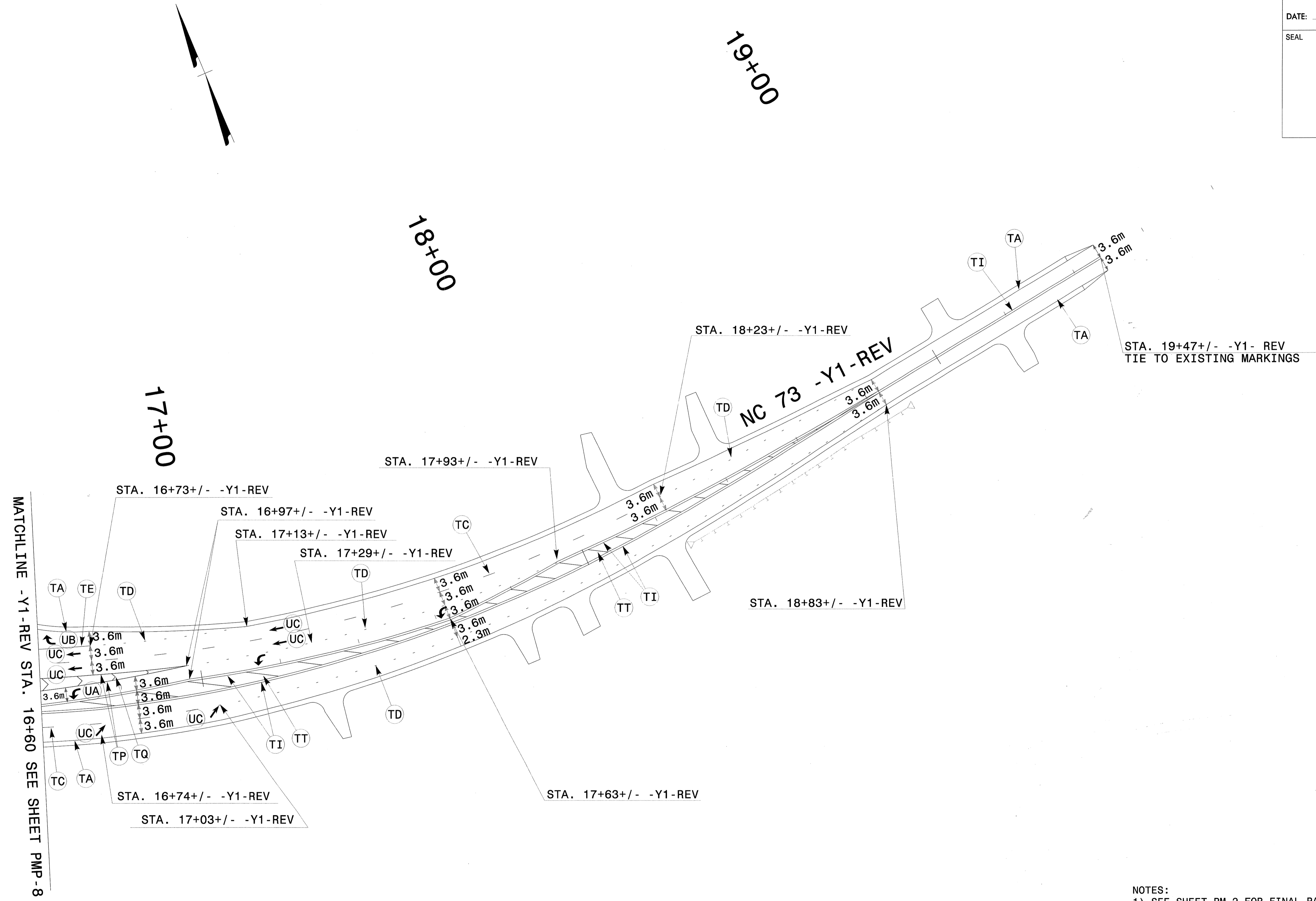
- NOTES:
- 1) SEE SHEET PM-2 FOR FINAL PAVEMENT MARKING SCHEDULE.
 - 2) PAVEMENT MARKINGS, SYMBOLS, AND CHARACTERS ARE TO BE MARKED ACCORDING TO THE ROADWAY STANDARD DRAWINGS UNLESS OTHERWISE NOTED IN THE PLANS.
 - 3) PAVEMENT MARKERS ARE TO BE SPACED ACCORDING TO THE ROADWAY STANDARD DRAWINGS.

PAVEMENT MARKING DETAIL



- NOTES:
- 1) SEE SHEET PM-2 FOR FINAL PAVEMENT MARKING SCHEDULE.
 - 2) PAVEMENT MARKINGS, SYMBOLS, AND CHARACTERS ARE TO BE MARKED ACCORDING TO THE ROADWAY STANDARD DRAWINGS UNLESS OTHERWISE NOTED IN THE PLANS.
 - 3) PAVEMENT MARKERS ARE TO BE SPACED ACCORDING TO THE ROADWAY STANDARD DRAWINGS.

PAVEMENT MARKING DETAIL



- NOTES:
- 1) SEE SHEET PM-2 FOR FINAL PAVEMENT MARKING SCHEDULE.
 - 2) PAVEMENT MARKINGS, SYMBOLS, AND CHARACTERS ARE TO BE MARKED ACCORDING TO THE ROADWAY STANDARD DRAWINGS UNLESS OTHERWISE NOTED IN THE PLANS.
 - 3) PAVEMENT MARKERS ARE TO BE SPACED ACCORDING TO THE ROADWAY STANDARD DRAWINGS.

PAVEMENT MARKING DETAIL