

WBS NO.: IC.058029, ETC.

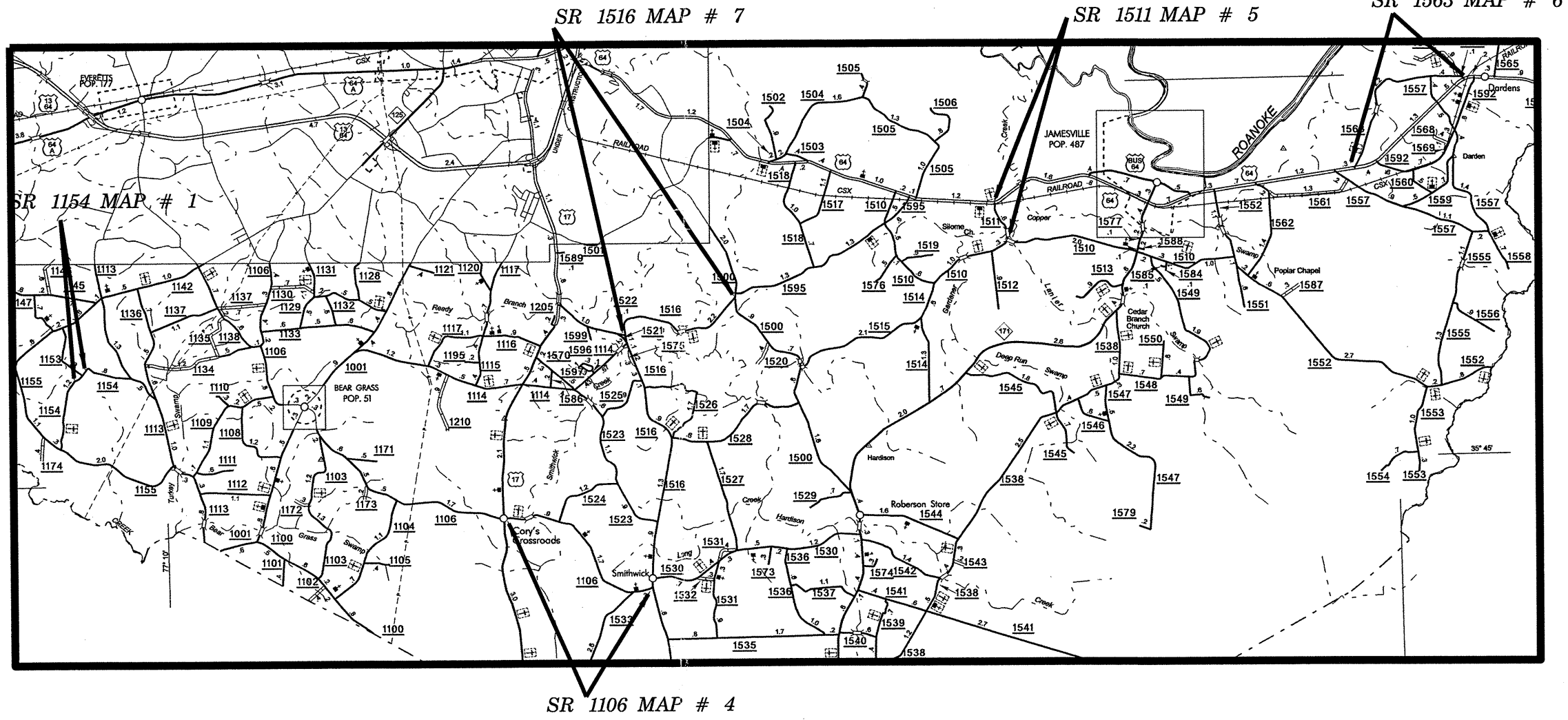
CONTRACT NO.:

SYSTEMTIME\$\$\$\$\$
\$\$\$\$\$DONS\$\$\$\$\$
\$\$\$\$\$NAME\$\$\$\$\$

STATE OF NORTH CAROLINA
DIVISION OF HIGHWAYS
MARTIN COUNTY

STATE	STATE PROJECT REFERENCE NO.	SHEET NO.	TOTAL SHEETS
N.C.	1C.058029, ETC.	1	5
STATE FUNDING	F.A.FUNDING	DESCRIPTION	

LOCATION: MAP #1 SR 1154 FROM END PAVEMENT TO BEG. PAVEMENT / MAP #4 SR 1106 FROM US 17 TO SR 1516
MAP #5 SR 1511 FROM US64 TO SR 1510 / MAP #6 SR 1563 FROM US64 TO US 64 / MAP #7 SR 1516 FROM SR 1500 TO SR 1521
TYPE OF WORK: RESURFACING AND PAVEMENT MARKINGS



NOT TO SCALE

PROJECT LENGTH	
MAP#1 WBS# 1C.058029	= 0.18 MILES
MAP#4 WBS# 1C.058044	= 2.90 MILES
MAP#5 WBS# 1C.058045	= 0.62 MILES
MAP#6 WBS# 1C.058046	= 2.70 MILES
MAP#7 WBS# 1C.058053	= 2.30 MILES

Prepared in the Office of:
DIVISION OF HIGHWAYS

2006 STANDARD SPECIFICATIONS

LETTING DATE: _____

W.B. HOBBS, P.E.
DIVISION PROJECT MANAGER

C.E. SLACHTA
DIVISION PROPOSALS ENGINEER

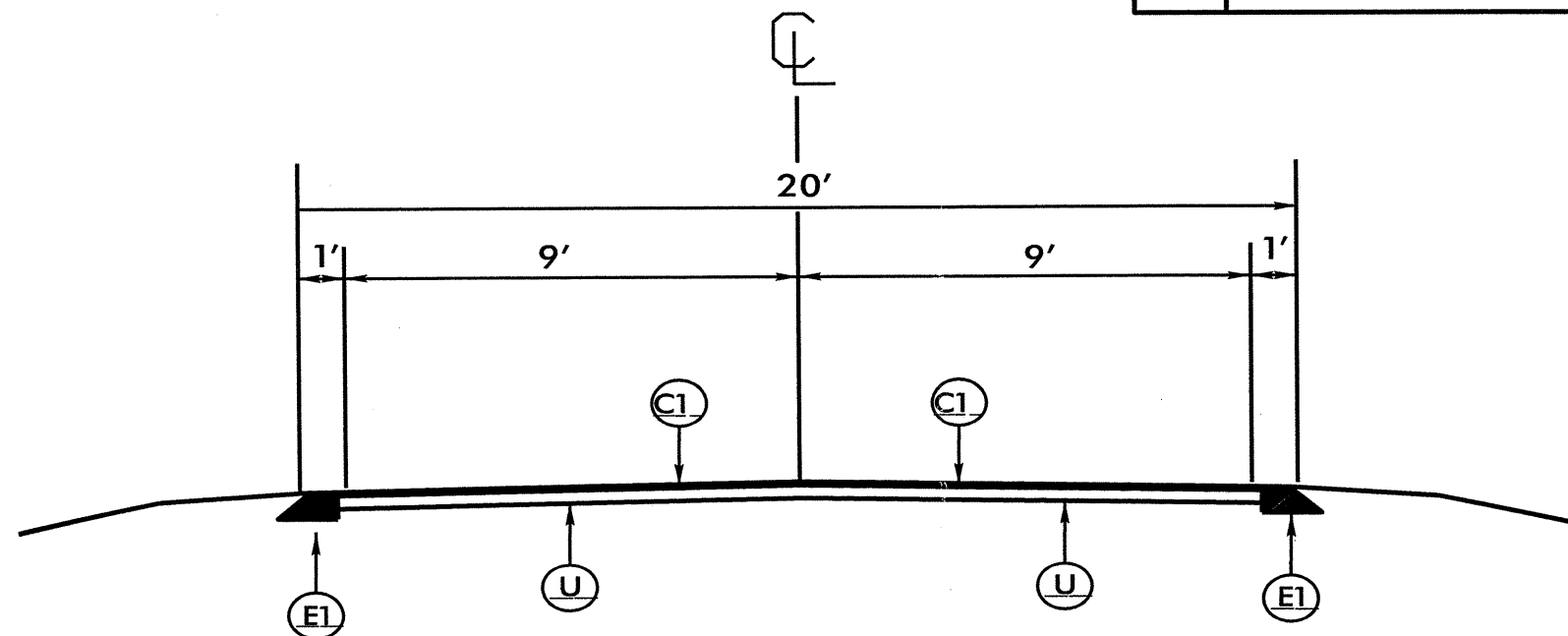
DIVISION OF HIGHWAYS
STATE OF NORTH CAROLINA



- NOTES:
1. ALL PAVED S.R. ROADS TO BE RESURFACED TO THE ENDS OF THE RADII OR AS DIRECTED BY THE ENGINEER
 2. EDGES, PAVEMENT WIDENING, INTERSECTIONS, AND BRIDGE FLARES ARE INCLUDED IN THE TABLE OF QUANTITIES
 3. PAVEMENT EDGE SLOPES ARE 1:1 UNLESS SHOWN OTHERWISE
 4. SHOULDERS AND DITCHES ARE TO BE CONSTRUCTED BY OTHERS

PROJECT REFERENCE NO.	SHEET NO.
1C.058029, ETC.	3 OF 5

PAVEMENT SCHEDULE	
C1	PROP. APPROX. 1.5" ASPHALT CONCRETE SURFACE COURSE TYPE SF9.5A, AT AN AVERAGE RATE OF 165 LBS. PER SQ.YD.
E1	PROP. APPROX. 5.5" ASPHALT CONCRETE BASE COURSE TYPE B25.0B, AT AN AVERAGE RATE OF 627 LBS. PER SQ.YD.
U	EXISTING PAVEMENT.



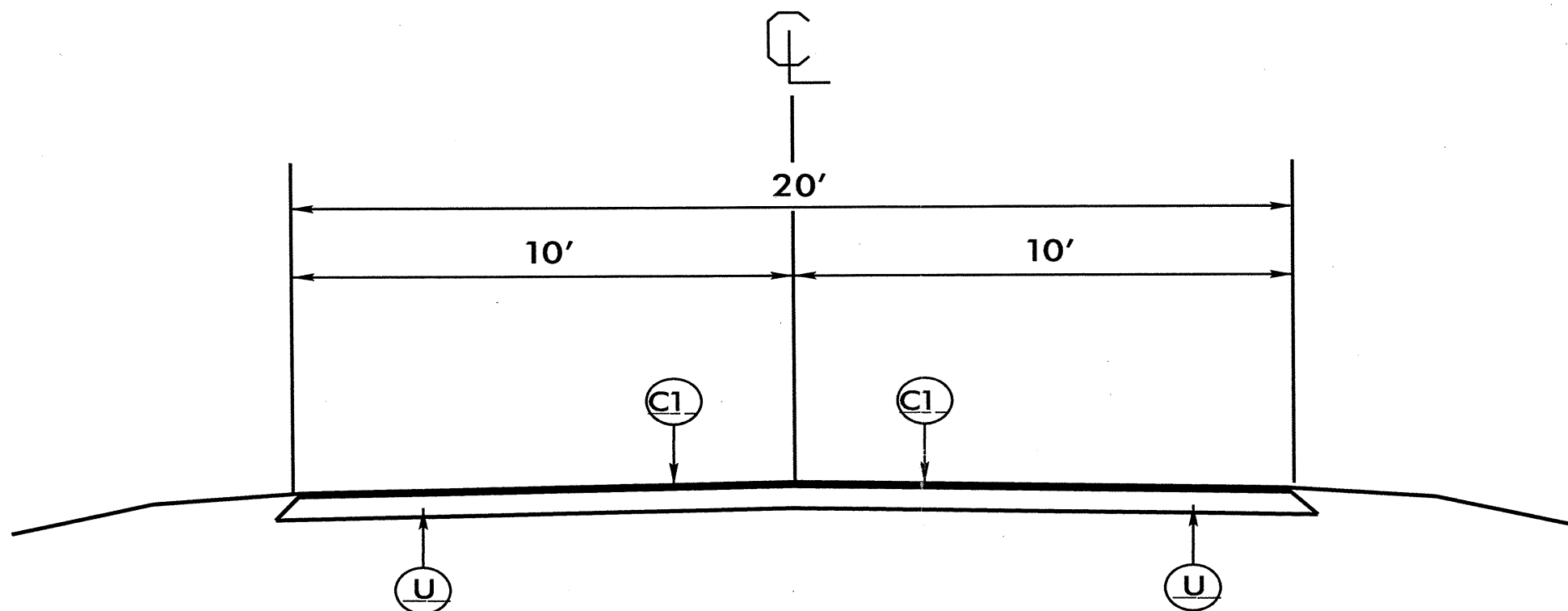
TYPICAL SECTION #1
 USE WITH MAP 2, 4, 5 & 6

NOTES:

1. ALL PAVED S.R. ROADS TO BE RESURFACED TO THE ENDS OF THE RADII OR AS DIRECTED BY THE ENGINEER
2. EDGES, PAVEMENT WIDENING, INTERSECTIONS, AND BRIDGE FLARES ARE INCLUDED IN THE TABLE OF QUANTITIES
3. PAVEMENT EDGE SLOPES ARE 1:1 UNLESS SHOWN OTHERWISE
4. SHOULDERS AND DITCHES ARE TO BE CONSTRUCTED BY OTHERS

PROJECT REFERENCE NO.	SHEET NO.
1C.058029, ETC.	4 OF 5

PAVEMENT SCHEDULE	
C1	PROP. APPROX. 1.5" ASPHALT CONCRETE SURFACE COURSE TYPE SF9.5A, AT AN AVERAGE RATE OF 165 LBS. PER SQ.YD.
U	EXISTING PAVEMENT.



TYPICAL SECTION #2

USE WITH MAP 1, 3 and 7

PROJECT NO.	SHEET NO.	TOTAL NO.
1C.058029 ETC.	5	5

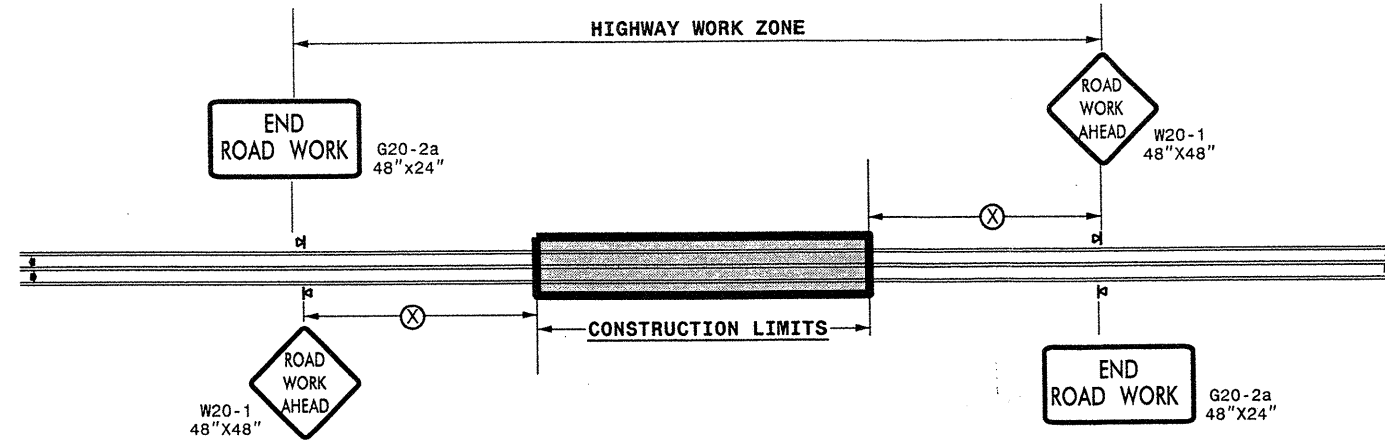
SUMMARY OF QUANTITIES

PROJECT NO	COUNTY	MAP NO	ROUTE	DESCRIPTION	TYP NO	FINAL SURFACE TESTING REQUIRED	LENGTH MI	WIDTH FT	MOBILIZATION LUMP SUM	BASE COURSE, B25.0B TONS	SURFACE COURSE, SF9.5A TONS	PG 64-22 PLANT MIX TONS
1C.058029	Martin	1	SR1154	FROM END PAVEMENT TO BEG PAVEMENT	2	NO	0.18	20	1		258	17
1C.058038	Martin	2	SR 1159	FROM SR 1454 TO NC 903	1	NO	3.3	20	*	1,808	3,536	308
1C.058039	Martin	3	SR1404	FROM SR 1159 TO SR 1138	2	NO	1.5	20	*		1,607	104
1C.058044	Martin	4	SR 1106	FROM US 17 TO SR 1516	1	NO	2.9	20	*	1,589	3,107	270
1C.058045	Martin	5	SR 1511	FROM US 64 TO SR 1510	1	NO	0.62	20	*	340	664	58
1C.058046	Martin	6	SR 1563	FROM US 64 TO US 64	1	NO	2.7	20	*	1,479	2,893	252
1C.058053	Martin	7	SR 1516	FROM SR 1500 TO SR 1521	2	NO	2.3	20	*		2,464	160
GRAND TOTAL							13.5		1	5,216	14,529	1,169

THERMOPLASTIC AND PAINT QUANTITIES

PROJECT NO	COUNTY	MAP NO	ROUTE	DESCRIPTION	4589000000-N	4810000000-E	
					GENERIC TRAFFIC CONTROL ITEM	4" WHITE PAINT	4" YELLOW PAINT
NO		NO			LS	LF	LF
1C.058029	Martin	1	SR1154	FROM END PAVEMENT TO BEG PAVEMENT	1	3,874	2,376
1C.058038	Martin	2	SR 1159	FROM SR 1454 TO NC 903	*	71,016	43,560
1C.058039	Martin	3	SR1404	FROM SR 1159 TO SR 1138	*	32,280	19,800
1C.058044	Martin	4	SR 1106	FROM US 17 TO SR 1516	*	62,408	38,280
1C.058045	Martin	5	SR 1511	FROM US 64 TO SR 1510	*	13,342	8,184
1C.058046	Martin	6	SR 1563	FROM US 64 TO US 64	*	58,104	35,640
1C.058053	Martin	7	SR 1516	FROM SR 1500 TO SR 1521	*	49,496	30,360
GRAND TOTAL					1	290,520	178,200
						468,720	

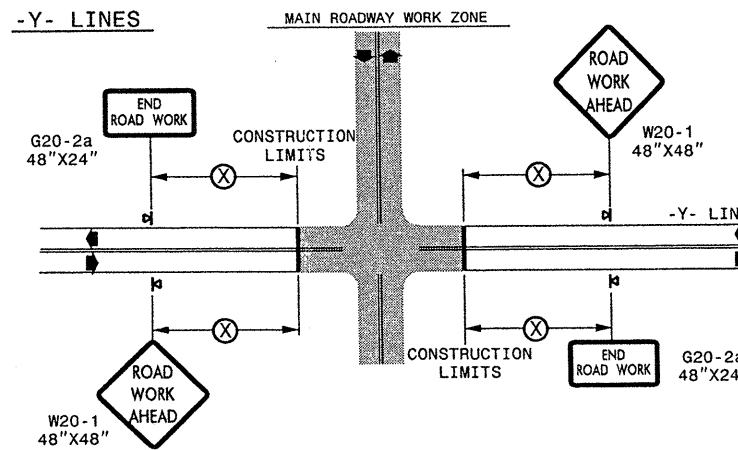
TWO-WAY UNDIVIDED ** (L-LINES)



POSTED SPEED LIMIT (M.P.H.)	RECOMMENDED MINIMUM SIGN SPACING
≤ 50	500'
≥ 55	1000'

STATE OF NORTH CAROLINA
DEPT. OF TRANSPORTATION
DIVISION OF HIGHWAYS
RALEIGH, N.C.

ROADWAYS INTERSECTING ALONG 2 WAY UNDIVIDED WORK ZONE (Y-LINES)



GENERAL NOTES


- USE FLUORESCENT ORANGE SHEETING (TYPE VII OR HIGHER) ON ALL ADVANCE WORK ZONE SIGNS.
- DO NOT INSTALL ADVANCE WARNING SIGNS MORE THAN 3 DAYS PRIOR TO BEGINNING OF WORK.
- ALL SIGN SPACING DIMENSIONS ARE APPROXIMATE, FIELD ADJUST AS NECESSARY OR AS DIRECTED.
- USE PORTABLE WORK ZONE SIGNS ONLY WITH PORTABLE WORK ZONE SIGN STANDS SPECIFICALLY DESIGNED FOR ONE ANOTHER. PORTABLE WORK ZONE SIGNS MAY BE ROLL UP OR APPROVED COMPOSITE.
- PROVIDE PORTABLE WORK ZONE SIGN STANDS, PORTABLE SIGNS AND SIGN SHEETING WHICH ARE LISTED ON THE NORTH CAROLINA DEPARTMENT OF TRANSPORTATION'S APPROVED PRODUCT LIST OR ACCEPTED AS TRAFFIC QUALIFIED BY THE TRAFFIC CONTROL UNIT.
- ** TWO-WAY UNDIVIDED ADVANCE WARNING SIGN CONFIGURATION MAY BE USED ON URBAN MULTI-LANE FACILITIES WHERE CONDITIONS LIMIT THE USE OF DUAL MOUNTED SIGNS AS DETERMINED BY THE ENGINEER.

LEGEND

- ◀ PORTABLE SIGN
- ◀ DIRECTION OF TRAFFIC FLOW

DETAIL DRAWING
FOR TWO-WAY UNDIVIDED
WORK ZONE WARNING SIGNS

SHEET 1 OF 1





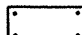
APPROVED: _____	DATE: _____	DETAIL DRAWING FOR TWO-WAY UNDIVIDED ADVANCED WORK ZONE WARNING SIGNS	
SEAL	SCALE: NONE		REVISIONS
	DATE: 01/11		
	DESIGN BY:		
	REVIEWED BY:		

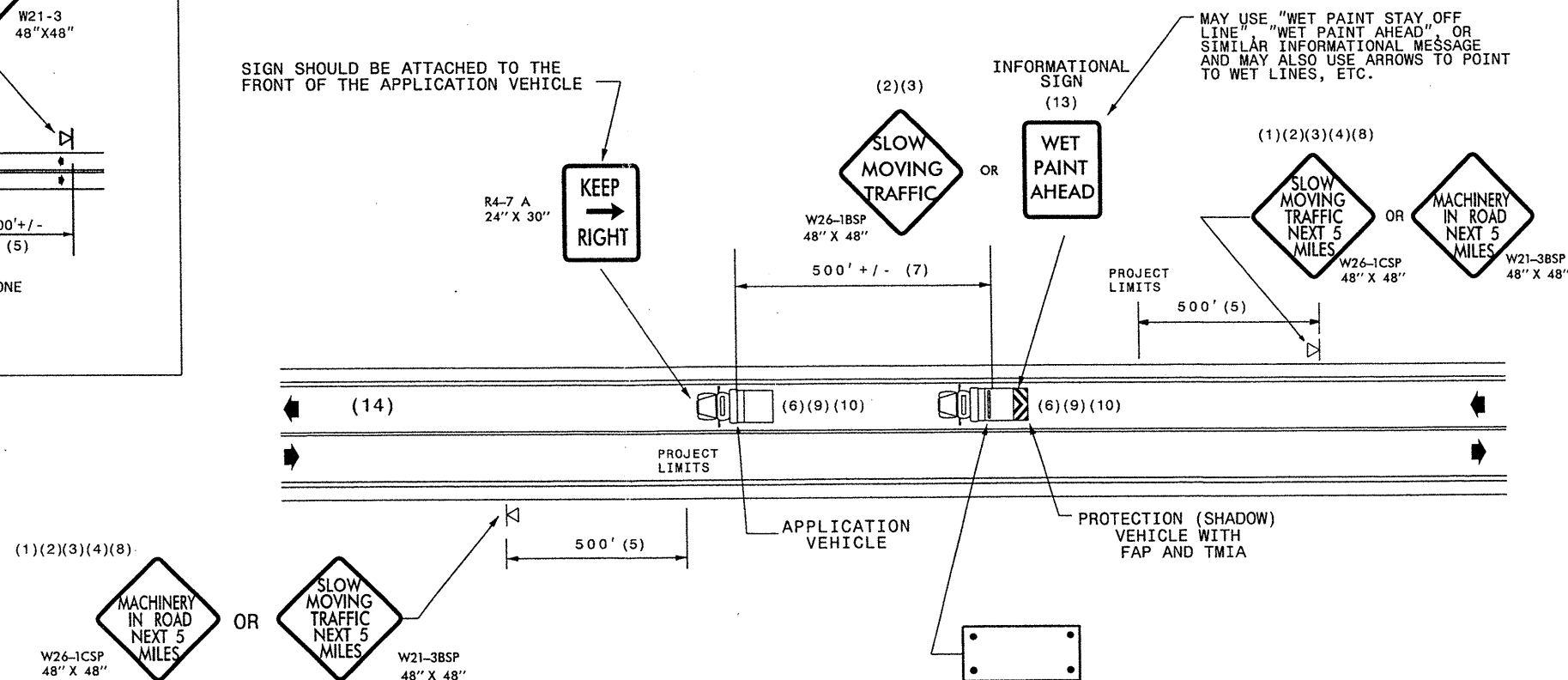
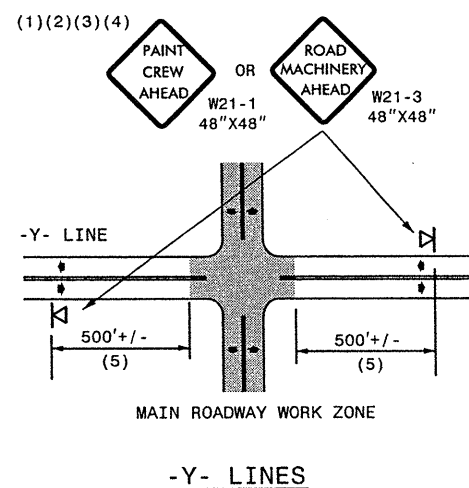
31-JAN-2011 10:37 AM \\DOT\UP\SR01\DOT\GROUPS-WZTCCC\TMU\WZTC\Resur\facimg\2011Resur\facimg\2011Eastern\2011.DIV\1\202754A-G-IC.058029x7-Martin.mSRs_AKP\C202754A-G-IC.058029x7.L2wzayundivurbfr.wysJuly2006.porTable.dgn

GENERAL NOTES

- (1) THE FOLLOWING OPTIONS MAY BE USED FOR ADVANCE WARNING SIGNS:
 - A. TRUCK MOUNTED SIGNS
 - B. TRUCK MOUNTED CHANGEABLE MESSAGE SIGN (CMS)
 - C. GROUND MOUNTED ADVANCE WARNING SIGNS (MUST CIRCLE TO PICK UP SIGNS)
 - D. GROUND MOUNTED CHANGEABLE MESSAGE SIGN (CMS) (MUST USE CIRCLE TO PICK UP SIGNS)
- (2) ALL ADVANCE WARNING SIGNS MUST BE 48" X 48" WITH FLUORESCENT ORANGE TYPE VII, VIII OR IX SHEETING. IF SPACE LIMITATIONS ON SHOULDER PROHIBIT A 48" X 48" SIGN, A SMALLER SIGN CAN BE USED WITH APPROVAL FROM ENGINEER.
- (3) SIGNS ON VEHICLES SHOULD BE MOUNTED A MINIMUM OF ONE (1) FOOT FROM THE GROUND AND SHOULD NOT BLOCK THE MOTORIST'S SIGHT OF THE FLASHING ARROW PANEL AND/OR LIGHTBAR.
- (4) GROUND MOUNTED ADVANCED WARNING SIGNS SHOULD BE MOUNTED A MINIMUM OF ONE (1) FOOT FROM THE GROUND TO BOTTOM OF SIGN.
- (5) SIGN SPACING SHOULD BE ADJUSTED FOR HORIZONTAL AND VERTICAL CURVES, ETC. TO IMPROVE SIGHT DISTANCES.
- (6) ADDITIONAL VEHICLES SHOULD BE USED IN WORK CARAVAN TO FACILITATE DRYING OF PAVEMENT MARKING MATERIAL (TMIA'S ARE OPTIONAL ON THESE ADDITIONAL VEHICLES). HOWEVER, THE FIRST VEHICLE MOTORISTS SEE IN THE TRAVEL LANE SHALL HAVE A TMIA.
- (7) ADJUST DISTANCE AS NEEDED TO PREVENT MOTORISTS FROM ENTERING SPACE BETWEEN THE APPLICATION AND PROTECTION VEHICLE. DISTANCE CAN BE LENGTHENED TO ACCOMODATE SIGHT DISTANCE NEEDS.
- (8) ROUND UP MILEAGE TO NEXT WHOLE MILE. WORK ZONE SHOULD NOT EXCEED FIVE (5) MILES IN LENGTH.
- (9) RADIO COMMUNICATION BETWEEN VEHICLES IS REQUIRED.
- (10) USE OF A LIGHT BAR ON ALL VEHICLES IS PREFERRED, BUT A ROTATING BEACON MAY BE USED INSTEAD.
- (11) IF WORK IS PERFORMED AT NIGHT, THE WORK AREA MUST BE ILLUMINATED WITH MACHINE AND/OR TOWER LIGHTS AS APPROVED BY THE ENGINEER.
- (12) ALL TRAFFIC CONTROL DEVICES WILL BE CONSIDERED INCIDENTAL TO THE PAY ITEMS FOR PAVEMENT MARKING AND MARKERS.
- (13) INFORMATIONAL SIGNS SHOULD BE ACTIVITY SPECIFIC, I.E. "PAINT CREW IN ROAD". SIGNS MAY BE RECTANGULAR OR DIAMOND SHAPE. SIGN SIZE SHOULD BE BASED ON THE MOTORIST ABILITY TO RECOGNIZE SIGN WHEN TRAVELING FIVE (5) MILES ABOVE POSTED SPEED LIMIT.
- (14) IF A LEAD VEHICLE IS ADDED TO OPERATION, IT SHOULD HAVE THE SAME ADVANCE WARNING SIGNS AS THE APPLICATION VEHICLE SHOWN BELOW.

LEGEND

-  PORTABLE SIGN. SIGNS MUST BE NCHRP-350 AND NCDOT APPROVED.
-  DIRECTION OF TRAFFIC FLOW
-  APPLICATION VEHICLE WITH LIGHT BAR
-  PROTECTION VEHICLE WITH TRUCK MOUNTED IMPACT ATTENUATOR (TMIA) AND LIGHT BAR (SEE ROADWAY STANDARD NO. 1165.01). TMIA MUST BE NCHRP-350 TEST LEVEL 3 (60+MPH) APPROVED.
-  FLASHING ARROW PANEL, TYPE "B" (60"X30" MIN.), "CAUTION MODE"



MOVING OPERATION CARAVAN

(OPERATIONS TRAVELING 3 MPH OR FASTER)
PLACING PAVEMENT MARKING OR MARKERS
ON TWO-LANE TWO-WAY ROADWAYS

DRAWING NUMBER 6
IMPLEMENTATION DATE: 07/01/97
REVISED: 11/03/04