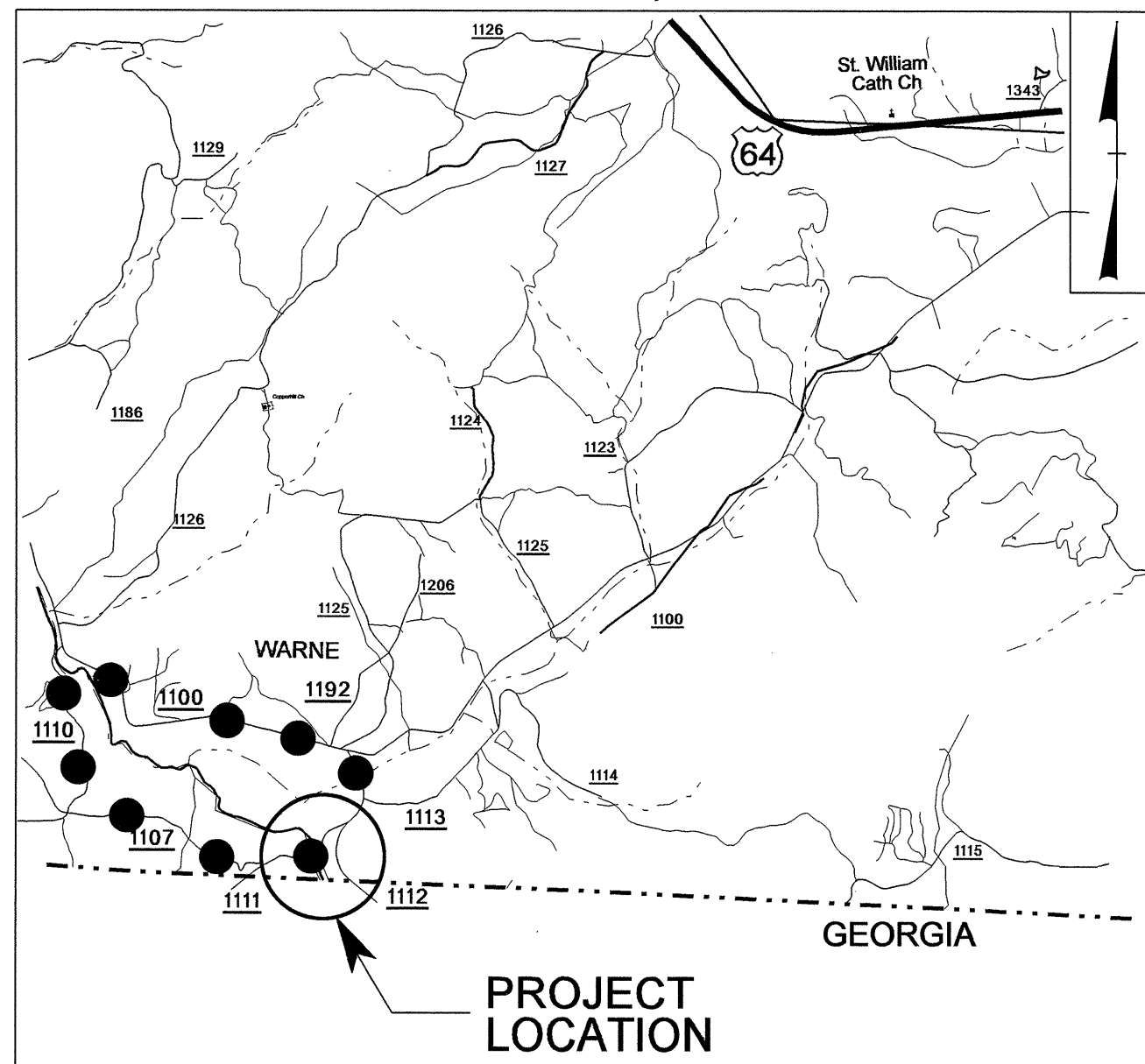


09/08/99

TIP PROJECT: B-4467

See Sheet 1-A For Index of Sheets
See Sheet 1-B For Conventional symbols
See Sheet 1-C For Survey Control Sheet



VICINITY MAP

OFF-SITE DETOUR ROUTE ●—●—●—●—●

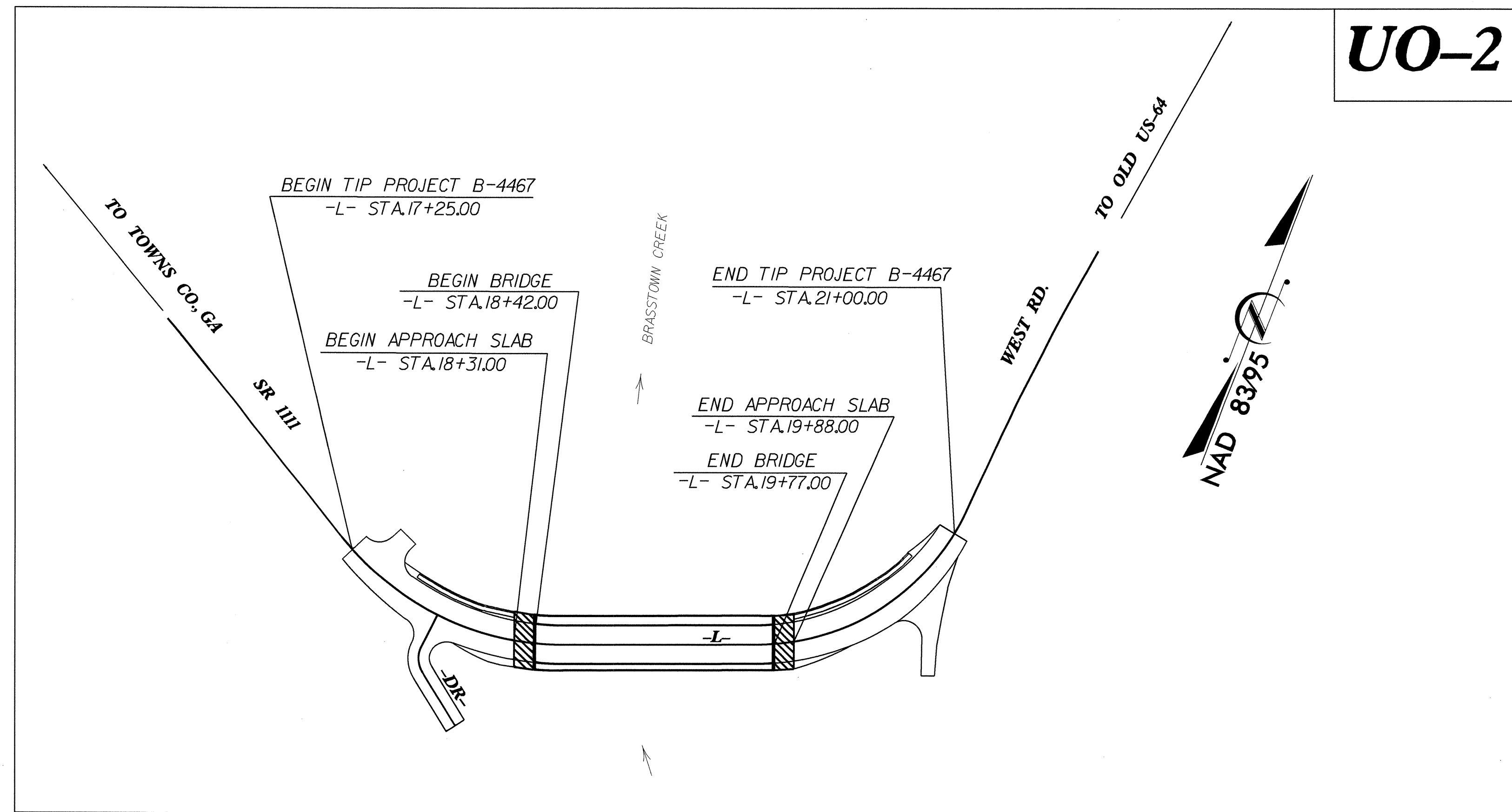
STATE OF NORTH CAROLINA DIVISION OF HIGHWAYS

UTILITIES BY OTHERS PLANS CLAY COUNTY

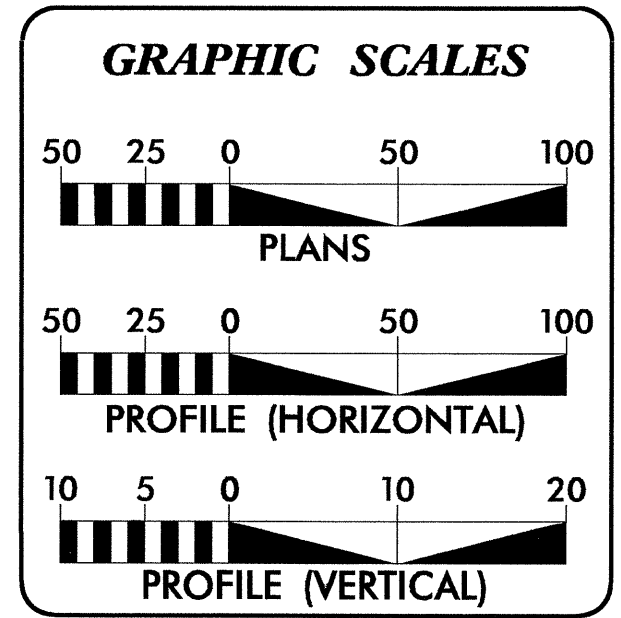
LOCATION: BRIDGE # 3 OVER BRASSTOWN CREEK
ON SR 1111 (WEST ROAD)

TYPE OF WORK: TELEPHONE LINE RELOCATION

T.I.P. NO.	SHEET NO.
B-4467	UO-1

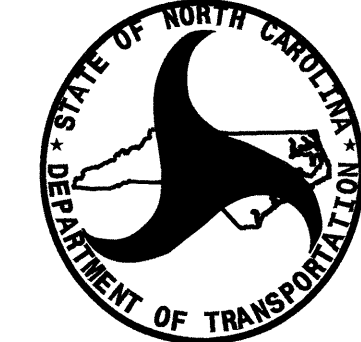


UO-2



INDEX OF SHEETS	
SHEET NO.	DESCRIPTION
UO-1	TITLE SHEET
UO-2	UTILITY BY OTHERS PLAN SHEET

UTILITY OWNERS ON PROJECT
(1) FRONTIER COMMUNICATIONS

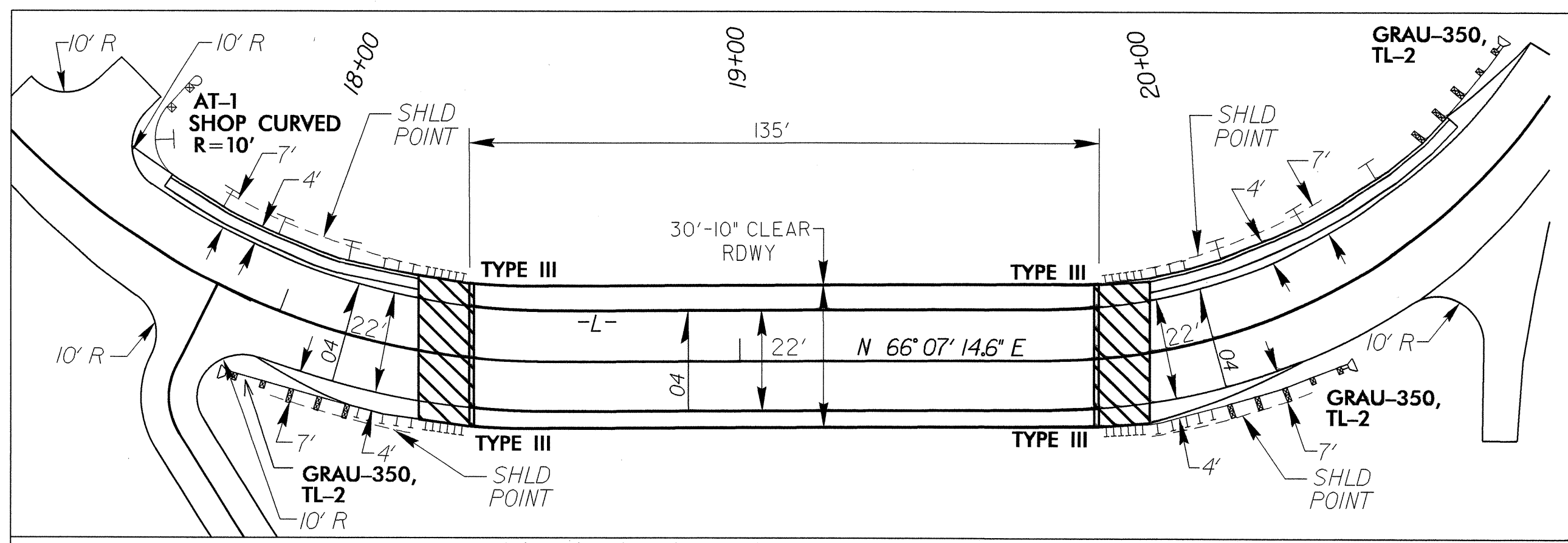

 PREPARED IN THE OFFICE OF:
**DIVISION OF HIGHWAYS
 UTILITIES ENGINEERING
 SECTION**
 1591 MAIL SERVICES CENTER
 RALEIGH, NC 27699-1591
 PHONE (919) 250-4128
 FAX (919) 250-4119

Roger Worthington, P.E. UTILITIES SECTION ENGINEER
Carl Barclay, P.E. UTILITIES SQUAD LEADER PROJECT ENGINEER
Ali Kouchehi, P.E. UTILITIES PROJECT DESIGNER

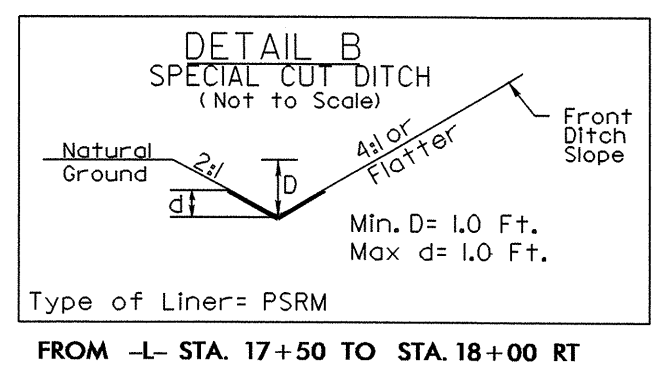
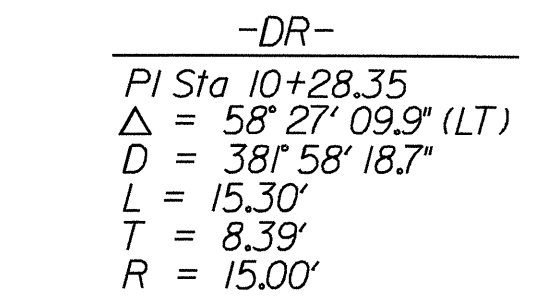
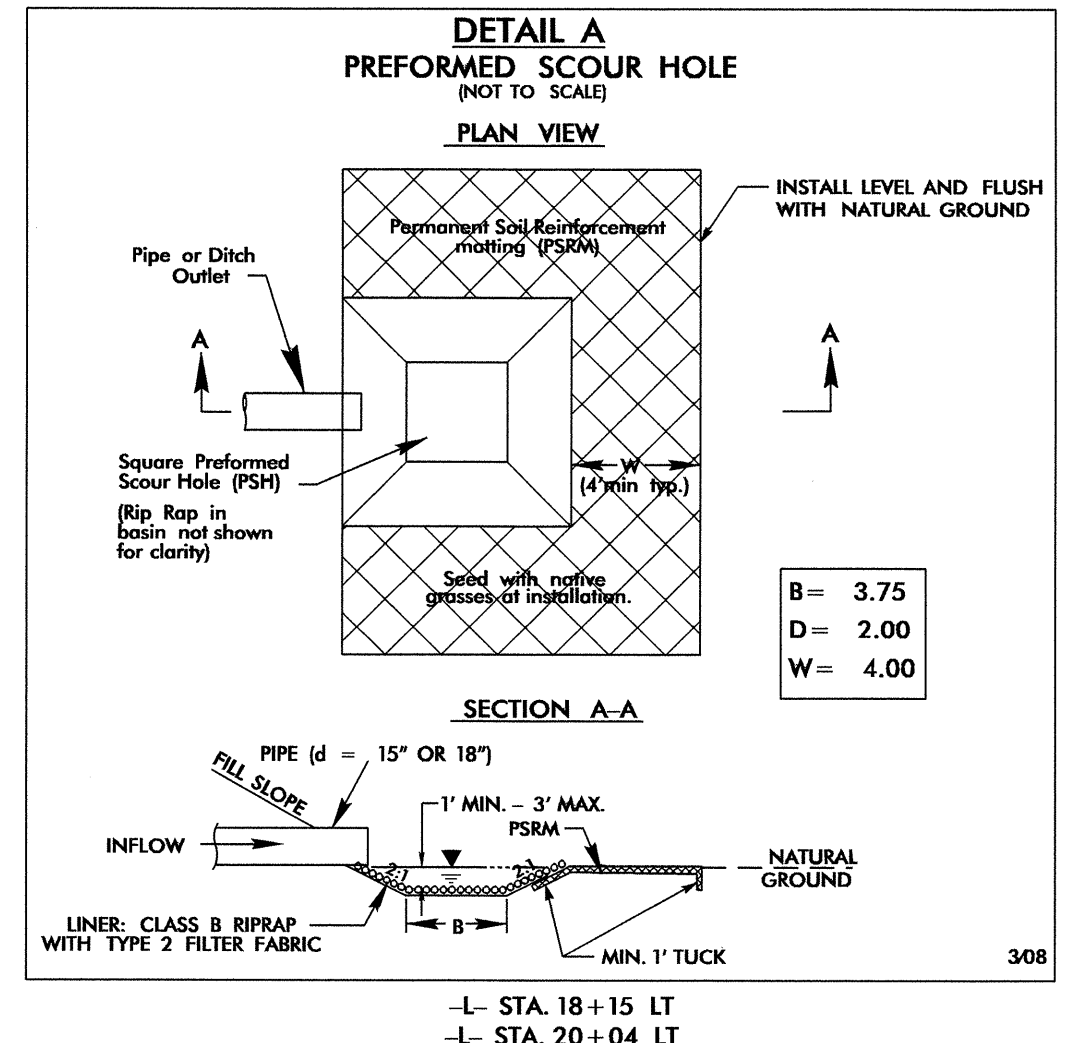
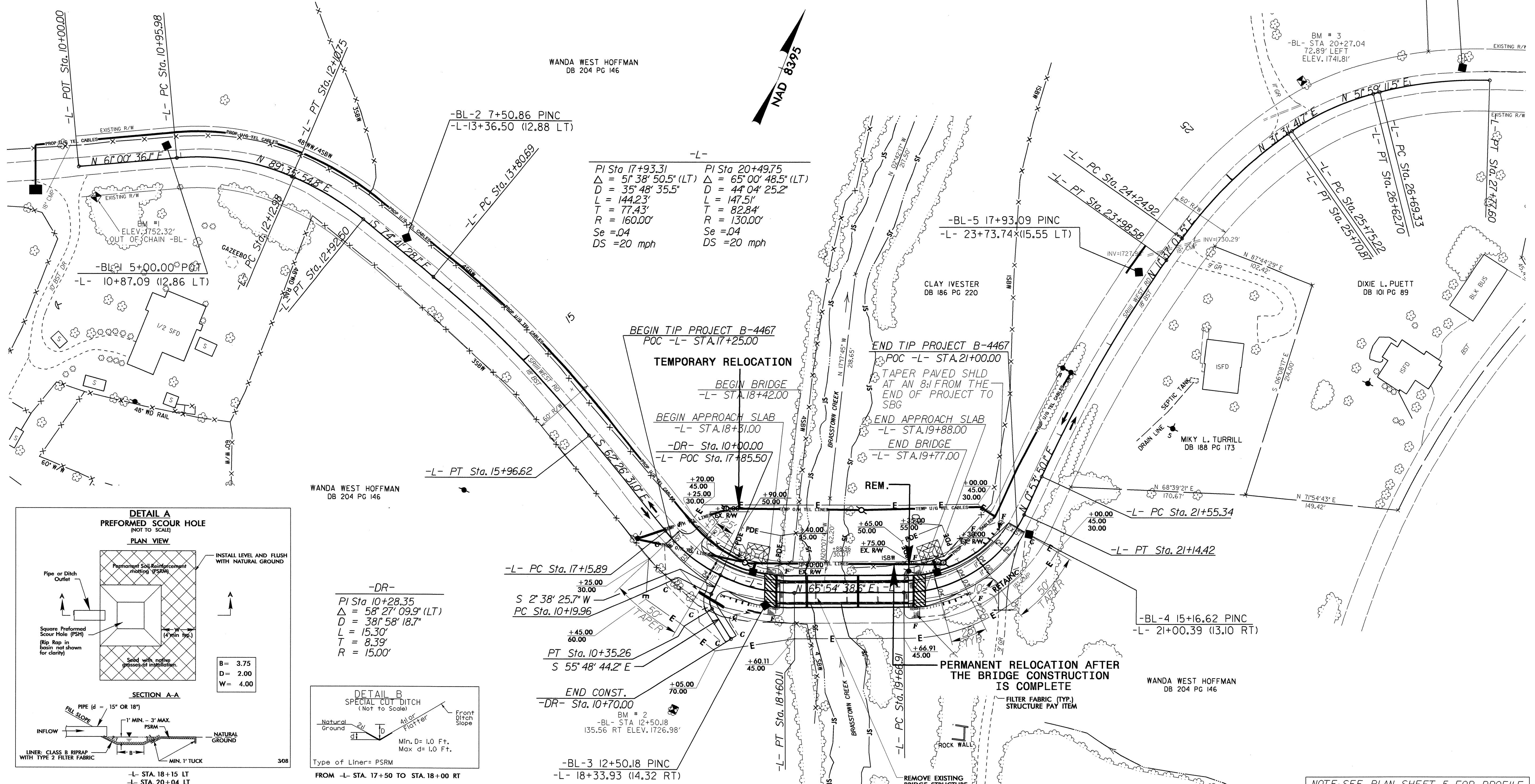
22-DEC-2010 09:50
R:\Utilities\RDY-Ut\Proj\B4467_RDY_tsh.dgn
\$\$\$\$\$USERNAME\$\$\$\$\$

UTILITIES BY OTHERS

NOTE:
ALL PROPOSED UTILITY WORK
SHOWN ON THIS SHEET WILL
BE DONE BY OTHERS



Sketch showing Dimensions of Pavement and Shoulder in Relation to Proposed Bridge Width



5/14/99
 PLAN 22-DEC-2000 09:50
 P:\proj\4467\plan\ph04.dgn
 308

NOTE: SEE PLAN SHEET 5 FOR PROFILE