

STATE	STATE PROJECT REFERENCE NO.	SHEET NO.	TOTAL SHEETS
N.C.	33693.1.1 (B-4417)	1	11
STATE PROJ. NO.	F.A. PROJ. NO.	DESCRIPTION	
33693.1.1	BRSTP-0099(4)	P.E. RW & UTIL.	

**CAUTION NOTICE**

THE SUBSURFACE INFORMATION AND THE SUBSURFACE INVESTIGATION ON WHICH IT IS BASED WERE MADE FOR THE PURPOSE OF STUDY, PLANNING, AND DESIGN, AND NOT FOR CONSTRUCTION OR PAY PURPOSES. THE VARIOUS FIELD BORING LOGS, ROCK CORES, AND SOIL TEST DATA AVAILABLE MAY BE REVIEWED OR INSPECTED IN RALEIGH BY CONTACTING THE N.C. DEPARTMENT OF TRANSPORTATION, GEOTECHNICAL ENGINEERING UNIT AT (919) 250-4088. NEITHER THE SUBSURFACE PLANS AND REPORTS, NOR THE FIELD BORING LOGS, ROCK CORES, OR SOIL TEST DATA ARE PART OF THE CONTRACT.

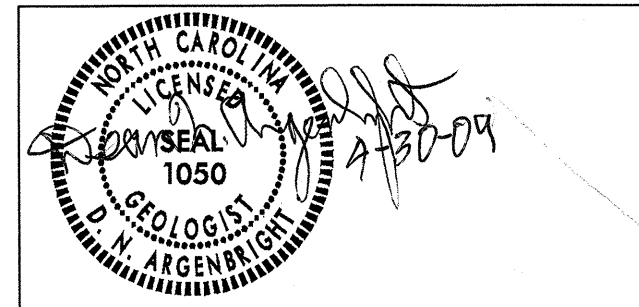
GENERAL SOIL AND ROCK STRATA DESCRIPTIONS AND INDICATED BOUNDARIES ARE BASED ON A GEOTECHNICAL INTERPRETATION OF ALL AVAILABLE SUBSURFACE DATA AND MAY NOT NECESSARILY REFLECT THE ACTUAL SUBSURFACE CONDITIONS BETWEEN BORINGS OR BETWEEN SAMPLED STRATA WITHIN THE BOREHOLE, THE LABORATORY SAMPLE DATA AND THE IN SITU (IN-PLACE) TEST DATA CAN BE RELIED ON ONLY TO THE DEGREE OF RELIABILITY INHERENT IN THE STANDARD TEST METHOD. THE OBSERVED WATER LEVELS OR SOIL MOISTURE CONDITIONS INDICATED IN THE SUBSURFACE INVESTIGATIONS ARE AS RECORDED AT THE TIME OF THE INVESTIGATION, THESE WATER LEVELS OR SOIL MOISTURE CONDITIONS MAY VARY CONSIDERABLY WITH TIME ACCORDING TO CLIMATIC CONDITIONS INCLUDING TEMPERATURES, PRECIPITATION, AND WIND, AS WELL AS OTHER NON-CLIMATIC FACTORS.

THE BIDDER OR CONTRACTOR IS CAUTIONED THAT DETAILS SHOWN ON THE SUBSURFACE PLANS ARE PRELIMINARY ONLY AND IN MANY CASES THE FINAL DESIGN DETAILS ARE DIFFERENT. FOR BIDDING AND CONSTRUCTION PURPOSES, REFER TO THE CONSTRUCTION PLANS AND DOCUMENTS FOR FINAL DESIGN INFORMATION ON THIS PROJECT. THE DEPARTMENT DOES NOT WARRANT OR GUARANTEE THE SUFFICIENCY OR ACCURACY OF THE INVESTIGATION MADE, NOR THE INTERPRETATIONS MADE, OR OPINION OF THE DEPARTMENT AS TO THE TYPE OF MATERIALS AND CONDITIONS TO BE ENCOUNTERED. THE BIDDER OR CONTRACTOR IS CAUTIONED TO MAKE SUCH INDEPENDENT SUBSURFACE INVESTIGATIONS AS HE DEEMS NECESSARY TO SATISFY HIMSELF AS TO CONDITIONS TO BE ENCOUNTERED ON THIS PROJECT. THE CONTRACTOR SHALL HAVE NO CLAIM FOR ADDITIONAL COMPENSATION OR FOR AN EXTENSION OF TIME FOR ANY REASON RESULTING FROM THE ACTUAL CONDITIONS ENCOUNTERED AT THE SITE DIFFERING FROM THOSE INDICATED IN THE SUBSURFACE INFORMATION.

PERSONNEL

SCD  
JRS  
S&ME

INVESTIGATED BY T.C. BOTTOMS  
CHECKED BY D.N. ARGENBRIGHT  
SUBMITTED BY D.N. ARGENBRIGHT  
DATE APRIL 2009



**CONTENTS**

<u>SHEET</u>	<u>DESCRIPTION</u>
1	TITLE SHEET
2	LEGEND
3	SITE PLAN
4	PROFILE
5-9	BORELOGS
10	SOIL TEST RESULTS
11	SCOUR REPORT

**STATE OF NORTH CAROLINA**  
**DEPARTMENT OF TRANSPORTATION**  
**DIVISION OF HIGHWAYS**  
**GEOTECHNICAL ENGINEERING UNIT**

**STRUCTURE**  
**SUBSURFACE INVESTIGATION**

PROJ. REFERENCE NO. 33693.1.1 (B-4417) F.A. PROJ. BRSTP-0099(4)  
COUNTY BEAUFORT  
PROJECT DESCRIPTION BRIDGE NO. 59 ON NC 99 OVER JACK CREEK  
AT -L- STA. 16+85

**INVENTORY**

**PROJECT: 33693.1.1 ID: B-4417**

DRAWN BY: C.R. SUMNER, T.C. BOTTOMS


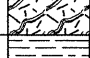

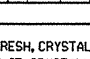
NOTE - THE INFORMATION CONTAINED HEREIN IS NOT IMPLIED OR GUARANTEED BY THE N.C. DEPARTMENT OF TRANSPORTATION AS BEING ACCURATE NOR IT IS CONSIDERED TO BE PART OF THE PLANS, SPECIFICATIONS, OR CONTRACT FOR THE PROJECT.

NOTE - BY HAVING REQUESTED THIS INFORMATION THE CONTRACTOR SPECIFICALLY WAIVES ANY CLAIMS FOR INCREASED COMPENSATION OR EXTENSION OF TIME BASED ON DIFFERENCES BETWEEN THE CONDITIONS INDICATED HEREIN AND THE ACTUAL CONDITIONS AT THE PROJECT SITE.

**NORTH CAROLINA DEPARTMENT OF TRANSPORTATION**  
**DIVISION OF HIGHWAYS**  
**GEOTECHNICAL ENGINEERING UNIT**

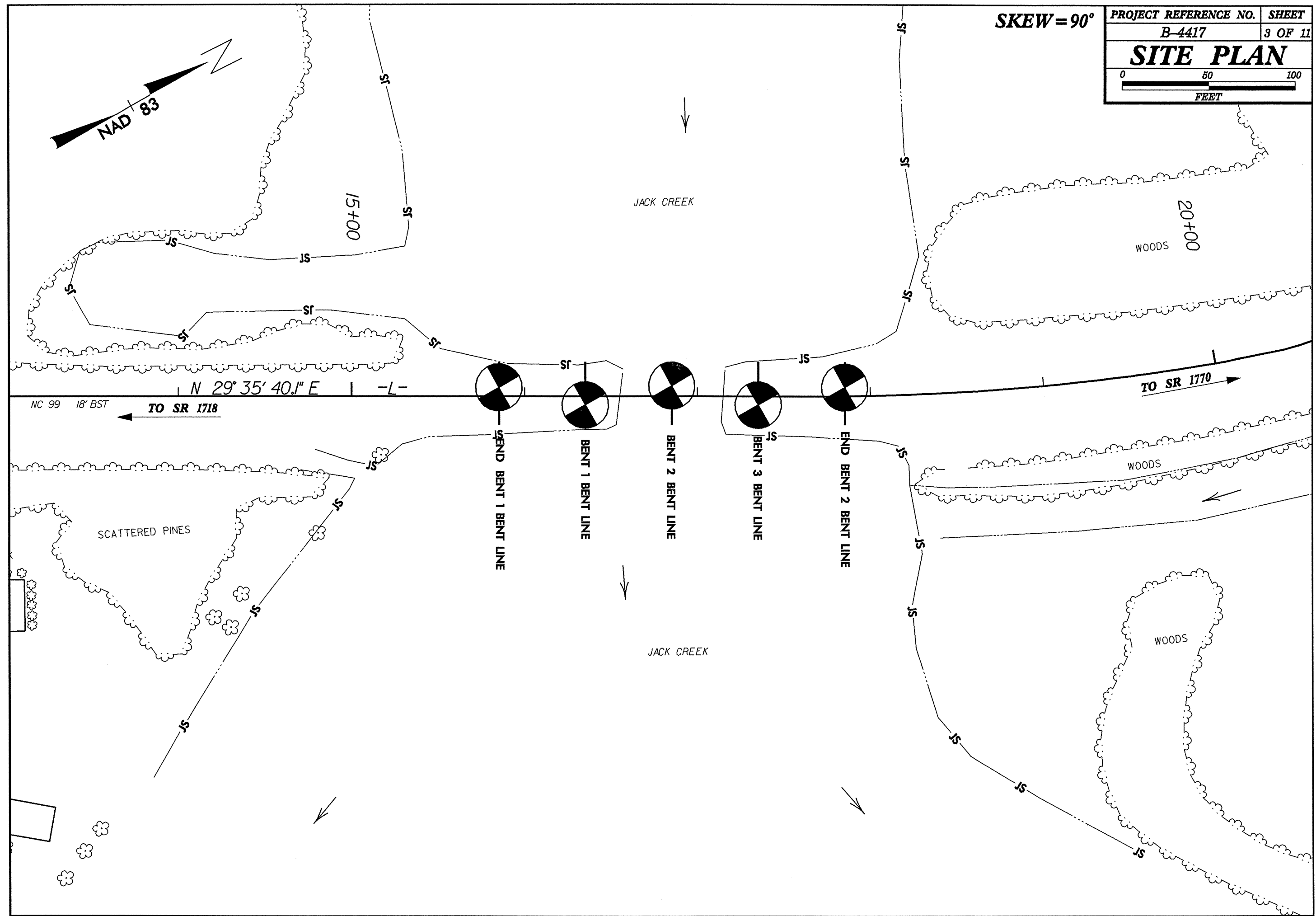
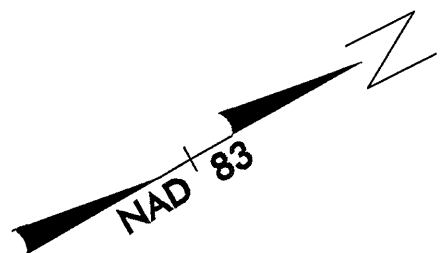
**SUBSURFACE INVESTIGATION**

**SOIL AND ROCK LEGEND, TERMS, SYMBOLS, AND ABBREVIATIONS**

SOIL DESCRIPTION	GRADATION	ROCK DESCRIPTION	TERMS AND DEFINITIONS
SOIL IS CONSIDERED TO BE THE UNCONSOLIDATED, SEMI-CONSOLIDATED, OR WEATHERED EARTH MATERIALS THAT CAN BE PENETRATED WITH A CONTINUOUS FLIGHT POWER AUGER, AND YIELD LESS THAN 100 BLOWS PER FOOT ACCORDING TO STANDARD PENETRATION TEST (AASHTO T206, ASTM D-1586). SOIL CLASSIFICATION IS BASED ON THE AASHTO SYSTEM. BASIC DESCRIPTIONS GENERALLY SHALL INCLUDE: CONSISTENCY, COLOR, TEXTURE, MOISTURE, AASHTO CLASSIFICATION, AND OTHER PERTINENT FACTORS SUCH AS MINERALOGICAL COMPOSITION, ANGULARITY, STRUCTURE, PLASTICITY, ETC. EXAMPLE: <i>VERY STIFF, GRAY, SILTY CLAY, MOST WITH INTERBEDDED FINE SAND LAYERS, HIGH PLASTIC, A-7-6</i>	WELL GRADED - INDICATES A GOOD REPRESENTATION OF PARTICLE SIZES FROM FINE TO COARSE. UNIFORM - INDICATES THAT SOIL PARTICLES ARE ALL APPROXIMATELY THE SAME SIZE. (ALSO POORLY GRADED) GAP-GRADED - INDICATES A MIXTURE OF UNIFORM PARTICLES OF TWO OR MORE SIZES.  THE ANGULARITY OR ROUNDNESS OF SOIL GRAINS IS DESIGNATED BY THE TERMS: <u>ANGULAR</u> , <u>SUBANGULAR</u> , <u>SUBROUNDED</u> , OR <u>ROUNDED</u> .	HARD ROCK IS NON-COASTAL PLAIN MATERIAL THAT IF TESTED, WOULD YIELD SPT REFUSAL. AN INFERRED ROCK LINE INDICATES THE LEVEL AT WHICH NON-COASTAL PLAIN MATERIAL WOULD YIELD SPT REFUSAL. SPT REFUSAL IS PENETRATION BY A SPLIT SPOON SAMPLER EQUAL TO OR LESS THAN 0.1 FOOT PER 60 BLOWS. IN NON-COASTAL PLAIN MATERIAL, THE TRANSITION BETWEEN SOIL AND ROCK IS OFTEN REPRESENTED BY A ZONE OF WEATHERED ROCK. ROCK MATERIALS ARE TYPICALLY DIVIDED AS FOLLOWS:  WEATHERED ROCK (WR)  NON-COASTAL PLAIN MATERIAL THAT WOULD YIELD SPT N VALUES > 100 BLOWS PER FOOT IF TESTED.  CRYSTALLINE ROCK (CR)  FINE TO COARSE GRAIN IGNEOUS AND METAMORPHIC ROCK THAT WOULD YIELD SPT REFUSAL IF TESTED. ROCK TYPE INCLUDES GRANITE, GNEISS, GABBRO, SCHIST, ETC.  NON-CRYSTALLINE ROCK (NCR)  FINE TO COARSE GRAIN METAMORPHIC AND NON-COASTAL PLAIN SEDIMENTARY ROCK THAT WOULD YIELD SPT REFUSAL IF TESTED. ROCK TYPE INCLUDES PHYLLITE, SLATE, SANDSTONE, ETC.  COASTAL PLAIN SEDIMENTARY ROCK (CP)  COASTAL PLAIN SEDIMENTS CEMENTED INTO ROCK, BUT MAY NOT YIELD SPT REFUSAL. ROCK TYPE INCLUDES LIMESTONE, SANDSTONE, CEMENTED SHELL BEDS, ETC.	<u>ALLUVIUM (ALLUV.)</u> - SOILS THAT HAVE BEEN TRANSPORTED BY WATER. <u>ADUIFIER</u> - A WATER BEARING FORMATION OR STRATA. <u>ARENACEOUS</u> - APPLIED TO ROCKS THAT HAVE BEEN DERIVED FROM SAND OR THAT CONTAIN SAND. <u>ARGILLACEOUS</u> - APPLIED TO ALL ROCKS OR SUBSTANCES COMPOSED OF CLAY MINERALS, OR HAVING A NOTABLE PROPORTION OF CLAY IN THEIR COMPOSITION, AS SHALE, SLATE, ETC. <u>ARTESIAN</u> - GROUND WATER THAT IS UNDER SUFFICIENT PRESSURE TO RISE ABOVE THE LEVEL AT WHICH IT IS ENCOUNTERED, BUT WHICH DOES NOT NECESSARILY RISE TO OR ABOVE THE GROUND SURFACE. <u>CALCAREOUS (CALC.)</u> - SOILS THAT CONTAIN APPRECIABLE AMOUNTS OF CALCIUM CARBONATE. <u>COLLUVIUM</u> - ROCK FRAGMENTS MIXED WITH SOIL DEPOSITED BY GRAVITY ON SLOPE OR AT BOTTOM OF SLOPE. <u>CORE RECOVERY (REC.)</u> - TOTAL LENGTH OF ALL MATERIAL RECOVERED IN THE CORE BARREL DIVIDED BY TOTAL LENGTH OF CORE RUN AND EXPRESSED AS A PERCENTAGE. <u>DIKE</u> - A TABULAR BODY OF IGNEOUS ROCK THAT CUTS ACROSS THE STRUCTURE OF ADJACENT ROCKS OR CUTS MASSIVE ROCK. <u>DIP</u> - THE ANGLE AT WHICH A STRATUM OR ANY PLANAR FEATURE IS INCLINED FROM THE HORIZONTAL. <u>DIP DIRECTION (DIP AZIMUTH)</u> - THE DIRECTION OR BEARING OF THE HORIZONTAL TRACE OF THE LINE OF DIP, MEASURED CLOCKWISE FROM NORTH. <u>FAULT</u> - A FRACTURE OR FRACTURE ZONE ALONG WHICH THERE HAS BEEN DISPLACEMENT OF THE SIDES RELATIVE TO ONE ANOTHER PARALLEL TO THE FRACTURE. <u>FISSILE</u> - A PROPERTY OF SPLITTING ALONG CLOSELY SPACED PARALLEL PLANES. <u>FLOAT</u> - ROCK FRAGMENTS ON SURFACE NEAR THEIR ORIGINAL POSITION AND DISLOGGED FROM PARENT MATERIAL. <u>FLOOD PLAIN (FP)</u> - LAND BORDERING A STREAM, BUILT OF SEDIMENTS DEPOSITED BY THE STREAM. <u>FORMATION (FM)</u> - A MAPPABLE GEOLOGIC UNIT THAT CAN BE RECOGNIZED AND TRACED IN THE FIELD. <u>JOINT</u> - FRACTURE IN ROCK ALONG WHICH NO APPRECIABLE MOVEMENT HAS OCCURRED. <u>LEDGE</u> - A SHELF-LIKE RIDGE OR PROJECTION OF ROCK WHOSE THICKNESS IS SMALL COMPARED TO ITS LATERAL EXTENT. <u>LENS</u> - A BODY OF SOIL OR ROCK THAT THINS OUT IN ONE OR MORE DIRECTIONS. <u>MOTTLED (MOT.)</u> - IRREGULARLY MARKED WITH SPOTS OF DIFFERENT COLORS. MOTTLING IN SOILS USUALLY INDICATES POOR AERATION AND LACK OF GOOD DRAINAGE. <u>PERCHED WATER</u> - WATER MAINTAINED ABOVE THE NORMAL GROUND WATER LEVEL BY THE PRESENCE OF AN INTERVENING IMPERVIOUS STRATUM. <u>RESIDUAL (RES.) SOIL</u> - SOIL FORMED IN PLACE BY THE WEATHERING OF ROCK. <u>ROCK QUALITY DESIGNATION (RQD)</u> - A MEASURE OF ROCK QUALITY DESCRIBED BY TOTAL LENGTH OF ROCK SEGMENTS EQUAL TO OR GREATER THAN 4 INCHES DIVIDED BY THE TOTAL LENGTH OF CORE RUN AND EXPRESSED AS A PERCENTAGE. <u>SAPROLITE (SAP.)</u> - RESIDUAL SOIL THAT RETAINS THE RELIC STRUCTURE OR FABRIC OF THE PARENT ROCK. <u>SILL</u> - AN INTRUSIVE BODY OF IGNEOUS ROCK OF APPROXIMATELY UNIFORM THICKNESS AND RELATIVELY THIN COMPARED WITH ITS LATERAL EXTENT, THAT HAS BEEN EMPLACED PARALLEL TO THE BEDDING OR SCHISTOSITY OF THE INTRUDED ROCKS. <u>SLICKENSIDE</u> - POLISHED AND STRIATED SURFACE THAT RESULTS FROM FRICTION ALONG A FAULT OR SLIP PLANE. <u>STANDARD PENETRATION TEST (PENETRATION RESISTANCE) (SPT)</u> - NUMBER OF BLOWS (N OR BPF) OF A 140 LB. HAMMER FALLING 30 INCHES REQUIRED TO PRODUCE A PENETRATION OF 1 FOOT INTO SOIL WITH A 2 INCH OUTSIDE DIAMETER SPLIT SPOON SAMPLER. SPT REFUSAL IS PENETRATION EQUAL TO OR LESS THAN 0.1 FOOT PER 60 BLOWS. <u>STRATA CORE RECOVERY (SREC)</u> - TOTAL LENGTH OF STRATA MATERIAL RECOVERED DIVIDED BY TOTAL LENGTH OF STRATUM AND EXPRESSED AS A PERCENTAGE. <u>STRATA ROCK QUALITY DESIGNATION (SRQD)</u> - A MEASURE OF ROCK QUALITY DESCRIBED BY TOTAL LENGTH OF ROCK SEGMENTS WITHIN A STRATUM EQUAL TO OR GREATER THAN 4 INCHES DIVIDED BY THE TOTAL LENGTH OF STRATA AND EXPRESSED AS A PERCENTAGE. <u>TOPSOIL (TS)</u> - SURFACE SOILS USUALLY CONTAINING ORGANIC MATTER.
<b>SOIL LEGEND AND AASHTO CLASSIFICATION</b>	<b>MINERALOGICAL COMPOSITION</b>	<b>WEATHERING</b>	
GENERAL CLASS. GRANULAR MATERIALS (<= 35% PASSING #200) SILT-CLAY MATERIALS (> 35% PASSING #200) ORGANIC MATERIALS	MINERAL NAMES SUCH AS QUARTZ, FELDSPAR, MICA, TALC, KAOLIN, ETC. ARE USED IN DESCRIPTIONS WHENEVER THEY ARE CONSIDERED OF SIGNIFICANCE.	FRESH ROCK GENERALLY FRESH, JOINTS BRIGHT, FEW JOINTS MAY SHOW SLIGHT STAINING. ROCK RINGS UNDER HAMMER IF CRYSTALLINE. VERY SLIGHT (V SL) ROCK GENERALLY FRESH, JOINTS STAINED, SOME JOINTS MAY SHOW THIN CLAY COATINGS IF OPEN. CRYSTALS ON A BROKEN SPECIMEN FACE SHINE BRIGHTLY. ROCK RINGS UNDER HAMMER BLOWS IF OF A CRYSTALLINE NATURE. SLIGHT (SL) ROCK GENERALLY FRESH, JOINTS STAINED AND DISCOLORATION EXTENDS INTO ROCK UP TO 1 INCH. OPEN JOINTS MAY CONTAIN CLAY. IN GRANITOID ROCKS SOME OCCASIONAL FELDSPAR CRYSTALS ARE DULL AND DISCOLORED. CRYSTALLINE ROCKS RING UNDER HAMMER BLOWS. MODERATE (MOD) SIGNIFICANT PORTIONS OF ROCK SHOW DISCOLORATION AND WEATHERING EFFECTS. IN GRANITOID ROCKS, MOST FELDSPARS ARE DULL AND DISCOLORED, SOME SHOW CLAY. ROCK HAS DULL SOUND UNDER HAMMER BLOWS AND SHOWS SIGNIFICANT LOSS OF STRENGTH AS COMPARED WITH FRESH ROCK. MODERATELY SEVERE (MOD. SEV) ALL ROCK EXCEPT QUARTZ DISCOLORED OR STAINED. IN GRANITOID ROCKS, ALL FELDSPARS DULL AND DISCOLORED AND A MAJORITY SHOW KAOLINIZATION. ROCK SHOWS SEVERE LOSS OF STRENGTH AND CAN BE EXCAVATED WITH A GEOLOGIST'S PICK. ROCK GIVES "CLUNK" SOUND WHEN STRUCK. <i>IF TESTED, WOULD YIELD SPT REFUSAL.</i> SEVERE (SEV) ALL ROCK EXCEPT QUARTZ DISCOLORED OR STAINED. ROCK FABRIC CLEAR AND EVIDENT BUT REDUCED IN STRENGTH TO STRONG SOIL. IN GRANITOID ROCKS ALL FELDSPARS ARE KAOLINIZED TO SOME EXTENT. SOME FRAGMENTS OF STRONG ROCK USUALLY REMAIN. <i>IF TESTED, YIELDS SPT N VALUES &gt; 100 BPF.</i> VERY SEVERE (V SEV) ALL ROCK EXCEPT QUARTZ DISCOLORED OR STAINED. ROCK FABRIC ELEMENTS ARE DISCERNIBLE BUT THE MASS IS EFFECTIVELY REDUCED TO SOIL STATUS, WITH ONLY FRAGMENTS OF STRONG ROCK REMAINING. SAPROLITE IS AN EXAMPLE OF ROCK WEATHERED TO A DEGREE SUCH THAT ONLY MINOR VESTIGES OF THE ORIGINAL ROCK FABRIC REMAIN. <i>IF TESTED, YIELDS SPT N VALUES &lt; 100 BPF.</i> COMPLETE ROCK REDUCED TO SOIL. ROCK FABRIC NOT DISCERNIBLE, OR DISCERNIBLE ONLY IN SMALL AND SCATTERED CONCENTRATIONS. QUARTZ MAY BE PRESENT AS DIKES OR STRINGERS. SAPROLITE IS ALSO AN EXAMPLE.	
GROUP CLASS. A-1, A-3, A-2, A-4, A-5, A-6, A-7, A-1, A-2, A-3, A-4, A-5, A-6, A-7	<b>COMPRESSIBILITY</b> SLIGHTLY COMPRESSIBLE LIQUID LIMIT LESS THAN 31 MODERATELY COMPRESSIBLE LIQUID LIMIT EQUAL TO 31-50 HIGHLY COMPRESSIBLE LIQUID LIMIT GREATER THAN 50		
SYMBOL	<b>PERCENTAGE OF MATERIAL</b>		
% PASSING: 10, 40, 200	ORGANIC MATERIAL GRANULAR SOILS SILT-CLAY SOILS OTHER MATERIAL TRACE OF ORGANIC MATTER 2 - 3% 3 - 5% TRACE 1 - 10% LITTLE ORGANIC MATTER 3 - 5% 5 - 12% LITTLE 10 - 20% MODERATELY ORGANIC 5 - 10% 12 - 20% SOME 20 - 35% HIGHLY ORGANIC >10% >20% HIGHLY 35% AND ABOVE		
LIQUID LIMIT, PLASTIC INDEX, GROUP INDEX	<b>GROUND WATER</b> WATER LEVEL IN BORE HOLE IMMEDIATELY AFTER DRILLING STATIC WATER LEVEL AFTER 24 HOURS PERCHED WATER, SATURATED ZONE, OR WATER BEARING STRATA SPRING OR SEEP		
USUAL TYPES OF MAJOR MATERIALS	<b>MISCELLANEOUS SYMBOLS</b>		
STONE FRAGS, GRAVEL, AND SAND; FINE SAND; SILTY OR CLAYEY GRAVEL AND SAND; SILTY SOILS; CLAYEY SOILS	ROADWAY EMBANKMENT (RE) WITH SOIL DESCRIPTION SOIL SYMBOL ARTIFICIAL FILL (AF) OTHER THAN ROADWAY EMBANKMENT INFERRED SOIL BOUNDARY INFERRED ROCK LINE ALLUVIAL SOIL BOUNDARY DIP & DIP DIRECTION OF ROCK STRUCTURES SOUNDING ROD	SPT TEST BORING AUGER BORING CORE BORING MONITORING WELL PIEZOMETER INSTALLATION SLOPE INDICATOR INSTALLATION SPT N-VALUE SPT REFUSAL	SAMPLE DESIGNATIONS S - BULK SAMPLE SS - SPLIT SPOON SAMPLE ST - SHELBY TUBE SAMPLE RS - ROCK SAMPLE RT - RECOMPACTED TRIAXIAL SAMPLE CBR - CALIFORNIA BEARING RATIO SAMPLE
GENERAL INDEX			
FAIR TO POOR, POOR, UNSUITABLE			
PI OF A-7-5 SUBGROUP IS ≤ LL - 30; PI OF A-7-6 SUBGROUP IS > LL - 30			
<b>CONSISTENCY OR DENSENESS</b>			
PRIMARY SOIL TYPE, COMPACTNESS OR CONSISTENCY, RANGE OF STANDARD PENETRATION RESISTANCE (N-VALUE), RANGE OF UNCONFINED COMPRESSIVE STRENGTH (TONS/FT <sup>2</sup> )			
GENERAL GRANULAR MATERIAL (NON-COHESIVE); GENERAL SILT-CLAY MATERIAL (COHESIVE)			
<b>TEXTURE OR GRAIN SIZE</b>			
U.S. STD. SIEVE SIZE OPENING (MM); BOULDER (BLDR.); COBBLE (COB.); GRAVEL (GR.); COARSE SAND (CSE, SD.); FINE SAND (F SD.); SILT (SL.); CLAY (CL.)			
GRAIN SIZE			
<b>SOIL MOISTURE - CORRELATION OF TERMS</b>			
SOIL MOISTURE SCALE (ATTERBERG LIMITS); FIELD MOISTURE DESCRIPTION; GUIDE FOR FIELD MOISTURE DESCRIPTION			
LL - LIQUID LIMIT; PL - PLASTIC LIMIT; OM - OPTIMUM MOISTURE SHRINKAGE LIMIT			
<b>PLASTICITY</b>			
NONPLASTIC; LOW PLASTICITY; MED. PLASTICITY; HIGH PLASTICITY			
<b>COLOR</b>			
DESCRIPTIONS MAY INCLUDE COLOR OR COLOR COMBINATIONS (TAN, RED, YELLOW-BROWN, BLUE-GRAY). MODIFIERS SUCH AS LIGHT, DARK, STREAKED, ETC. ARE USED TO DESCRIBE APPEARANCE.			
	<b>ABBREVIATIONS</b>		
	AR - AUGER REFUSAL; BT - BORING TERMINATED; CL - CLAY; CPT - CONE PENETRATION TEST; CSE - COARSE; DMT - DILATOMETER TEST; DPT - DYNAMIC PENETRATION TEST; e - VOID RATIO; F - FINE; FOSS. - FOSSILIFEROUS; FRAC. - FRACTURED, FRACTURES; FRAGS. - FRAGMENTS; HI. - HIGHLY; MED. - MEDIUM; MICA - MICAEOUS; MOD. - MODERATELY; NP - NON PLASTIC; ORG. - ORGANIC; PMT - PRESSUREMETER TEST; SAP. - SAPROLITIC; SD. - SAND, SANDY; SL. - SILT, SILTY; SLL. - SLIGHTLY; TCR - TRICONE REFUSAL; w - MOISTURE CONTENT; v - VERY; VST - VANE SHEAR TEST; WEA. - WEATHERED; γ <sub>u</sub> - UNIT WEIGHT; γ <sub>d</sub> - DRY UNIT WEIGHT		
	<b>EQUIPMENT USED ON SUBJECT PROJECT</b>		
	DRILL UNITS: MOBILE B-57; BK-51; CME-45; CME-750; PORTABLE HOIST	ADVANCING TOOLS: CLAY BITS; 6" CONTINUOUS FLIGHT AUGER; 6" HOLLOW AUGERS; HARD FACED FINGER BITS; TUNG-CARBIDE INSERTS; CASING w/ ADVANCER; TRICONE 2 1/2" STEEL TEETH; TRICONE TUNG-CARB. CORE BIT	HAMMER TYPE: AUTOMATIC; MANUAL
		CORE SIZE: B; N; H	HAND TOOLS: POST HOLE DIGGER; HAND AUGER; SOUNDING ROD; VANE SHEAR TEST
			<b>ROCK HARDNESS</b>
			VERY HARD: CANNOT BE SCRATCHED BY KNIFE OR SHARP PICK. BREAKING OF HAND SPECIMENS REQUIRES SEVERAL HARD BLOWS OF THE GEOLOGIST'S PICK. HARD: CAN BE SCRATCHED BY KNIFE OR PICK ONLY WITH DIFFICULTY. HARD HAMMER BLOWS REQUIRED TO DETACH HAND SPECIMEN. MODERATELY HARD: CAN BE SCRATCHED BY KNIFE OR PICK. GOUGES OR GROOVES TO 0.25 INCHES DEEP CAN BE EXCAVATED BY HARD BLOW OF A GEOLOGIST'S PICK. HAND SPECIMENS CAN BE DETACHED BY MODERATE BLOWS. MEDIUM HARD: CAN BE GROOVED OR GOUGED 0.05 INCHES DEEP BY FIRM PRESSURE OF KNIFE OR PICK POINT. CAN BE EXCAVATED IN SMALL CHIPS TO PIECES 1 INCH MAXIMUM SIZE BY HARD BLOWS OF THE POINT OF A GEOLOGIST'S PICK. SOFT: CAN BE GROOVED OR GOUGED READILY BY KNIFE OR PICK. CAN BE EXCAVATED IN FRAGMENTS FROM CHIPS TO SEVERAL INCHES IN SIZE BY MODERATE BLOWS OF A PICK POINT. SMALL, THIN PIECES CAN BE BROKEN BY FINGER PRESSURE. VERY SOFT: CAN BE CARVED WITH KNIFE. CAN BE EXCAVATED READILY WITH POINT OF PICK. PIECES 1 INCH OR MORE IN THICKNESS CAN BE BROKEN BY FINGER PRESSURE. CAN BE SCRATCHED READILY BY FINGER NAIL.
			<b>FRACTURE SPACING</b>
			VERY WIDE: MORE THAN 10 FEET WIDE: 3 TO 10 FEET MODERATELY CLOSE: 1 TO 3 FEET CLOSE: 0.16 TO 1 FEET VERY CLOSE: LESS THAN 0.16 FEET
			<b>BEDDING</b>
			VERY THICKLY BEDDED: > 4 FEET THICKLY BEDDED: 1.5 - 4 FEET THINLY BEDDED: 0.16 - 1.5 FEET VERY THINLY BEDDED: 0.03 - 0.16 FEET THICKLY LAMINATED: 0.008 - 0.03 FEET THINLY LAMINATED: < 0.008 FEET
			<b>INDURATION</b>
			FOR SEDIMENTARY ROCKS, INDURATION IS THE HARDENING OF THE MATERIAL BY CEMENTING, HEAT, PRESSURE, ETC. FRIABLE: RUBBING WITH FINGER FREES NUMEROUS GRAINS; GENTLE BLOW BY HAMMER DISINTEGRATES SAMPLE. MODERATELY INDURATED: GRAINS CAN BE SEPARATED FROM SAMPLE WITH STEEL PROBE; BREAKS EASILY WHEN HIT WITH HAMMER. INDURATED: GRAINS ARE DIFFICULT TO SEPARATE WITH STEEL PROBE; DIFFICULT TO BREAK WITH HAMMER. EXTREMELY INDURATED: SHARP HAMMER BLOWS REQUIRED TO BREAK SAMPLE; SAMPLE BREAKS ACROSS GRAINS.
			<b>NOTES:</b>
			BENCH MARK: B165 -L- STA. 16+46 14' RT ELEVATION: 4.97 FT.

**SKEW = 90°**

PROJECT REFERENCE NO.	SHEET
B-4417	3 OF 11
<b>SITE PLAN</b>	
0      50      100 FEET	



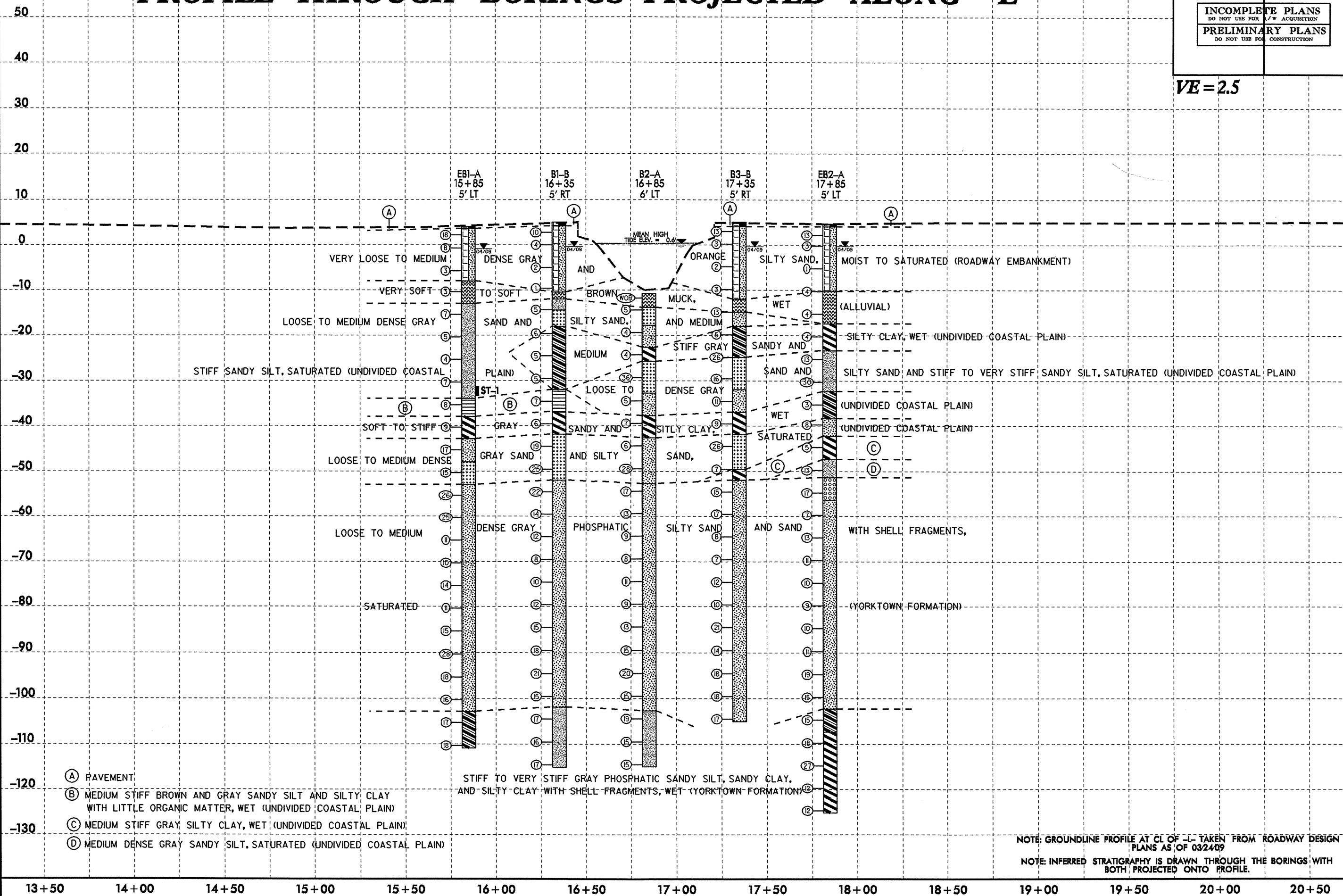
5/14/99

30-APR-2009 15:56 i:\perry\greenville\project\investigation\tp\b4417-geo\_brdg\cadd-geotech\lmpof\b4417-geo\_pf1.dgn

PROJECT REFERENCE NO. <b>B-4417</b>	SHEET NO. <b>4 OF 11</b>
ROADWAY DESIGN ENGINEER	HYDRAULICS ENGINEER
INCOMPLETE PLANS DO NOT USE FOR A/W ACQUISITION	
PRELIMINARY PLANS DO NOT USE FOR CONSTRUCTION	

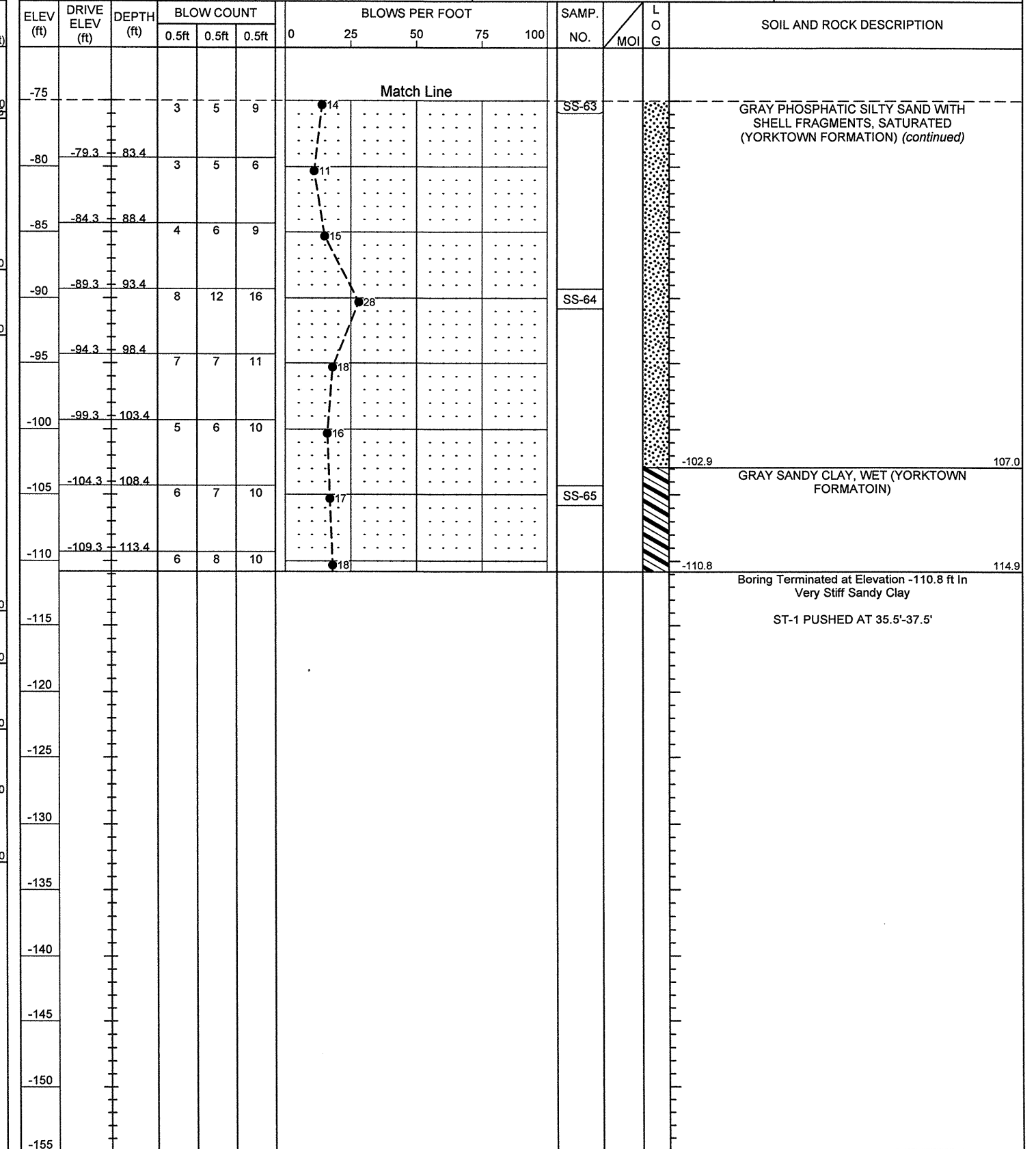
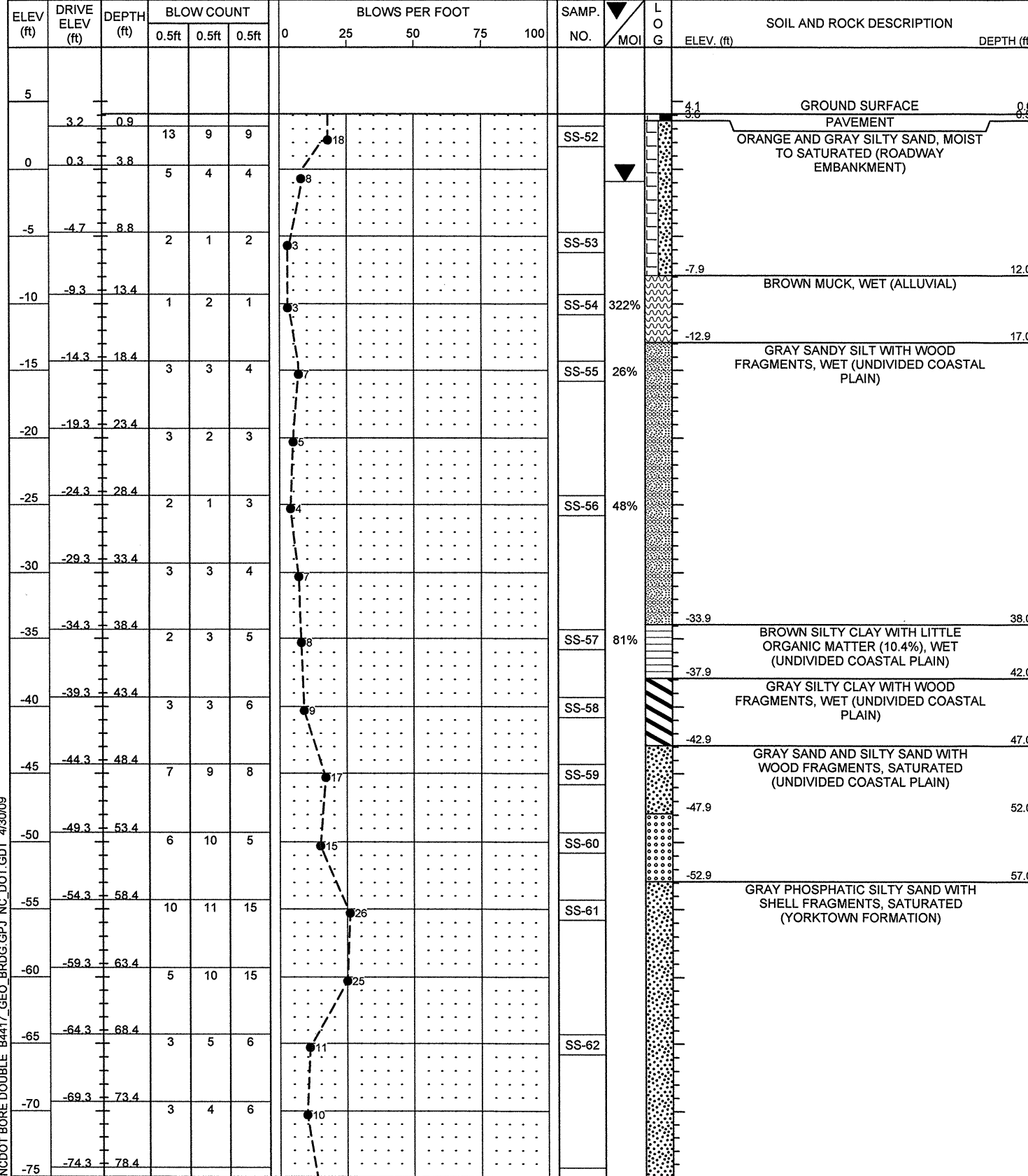
# PROFILE THROUGH BORINGS PROJECTED ALONG -L-

VE = 2.5



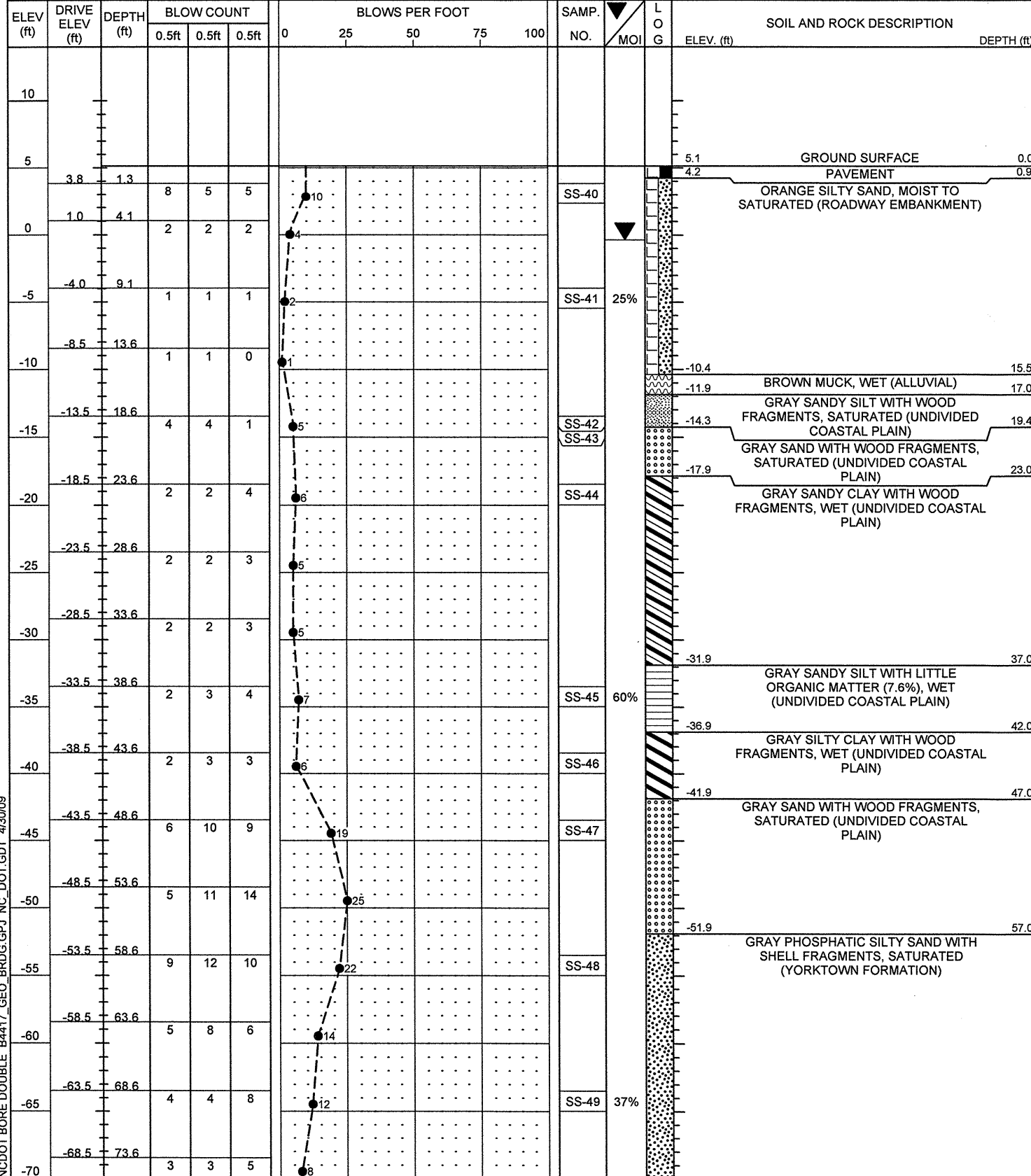
PROJECT NO. 33693.1.1	ID. B-4417	COUNTY BEAUFORT	GEOLOGIST Dillard, S. C.
SITE DESCRIPTION BRIDGE NO. 59 ON NC 99 OVER JACK CREEK			GROUND WTR (ft)
BORING NO. EB1-A	STATION 15+85	OFFSET 5ft LT	ALIGNMENT -L-
COLLAR ELEV. 4.1 ft	TOTAL DEPTH 114.9 ft	NORTHING 639,069	EASTING 2,692,645
DRILL MACHINE Mobile B-57	DRILL METHOD Mud Rotary	HAMMER TYPE Manual	
START DATE 04/02/09	COMP. DATE 04/02/09	SURFACE WATER DEPTH N/A	DEPTH TO ROCK N/A

PROJECT NO. 33693.1.1	ID. B-4417	COUNTY BEAUFORT	GEOLOGIST Dillard, S. C.
SITE DESCRIPTION BRIDGE NO. 59 ON NC 99 OVER JACK CREEK			GROUND WTR (ft)
BORING NO. EB1-A	STATION 15+85	OFFSET 5ft LT	ALIGNMENT -L-
COLLAR ELEV. 4.1 ft	TOTAL DEPTH 114.9 ft	NORTHING 639,069	EASTING 2,692,645
DRILL MACHINE Mobile B-57	DRILL METHOD Mud Rotary	HAMMER TYPE Manual	
START DATE 04/02/09	COMP. DATE 04/02/09	SURFACE WATER DEPTH N/A	DEPTH TO ROCK N/A

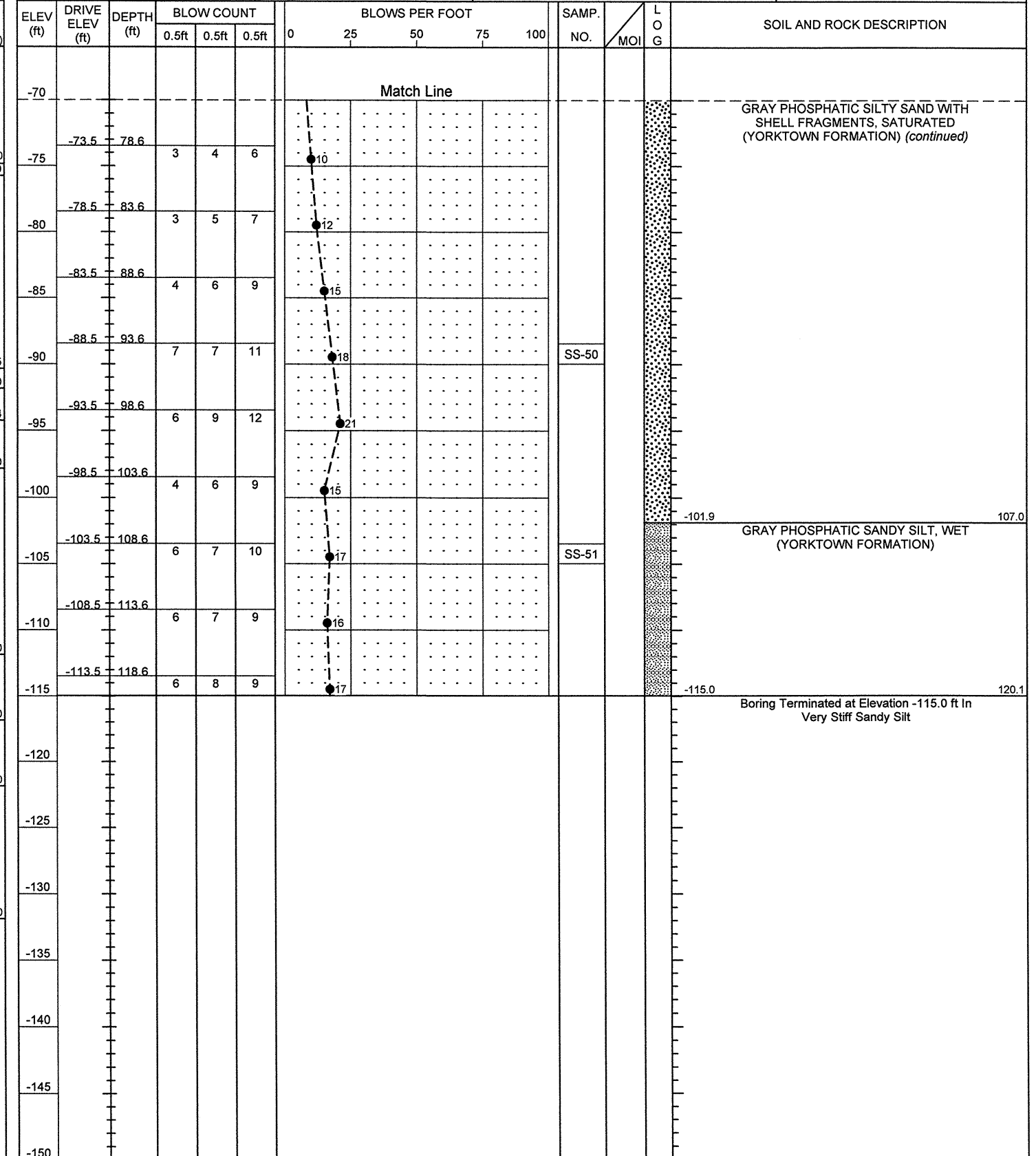


NCDOT BORE DOUBLE B4417\_GEO\_BRDG.GPJ\_NC\_DOT.GDT 4/30/09

PROJECT NO. 33693.1.1	ID. B-4417	COUNTY BEAUFORT	GEOLOGIST Dillard, S. C.
SITE DESCRIPTION BRIDGE NO. 59 ON NC 99 OVER JACK CREEK			GROUND WTR (ft)
BORING NO. B1-B	STATION 16+35	OFFSET 5ft RT	ALIGNMENT -L-
COLLAR ELEV. 5.1 ft	TOTAL DEPTH 120.1 ft	NORTHING 639,107	EASTING 2,692,678
DRILL MACHINE Mobile B-57	DRILL METHOD Mud Rotary	HAMMER TYPE Manual	
START DATE 04/02/09	COMP. DATE 04/02/09	SURFACE WATER DEPTH N/A	DEPTH TO ROCK N/A



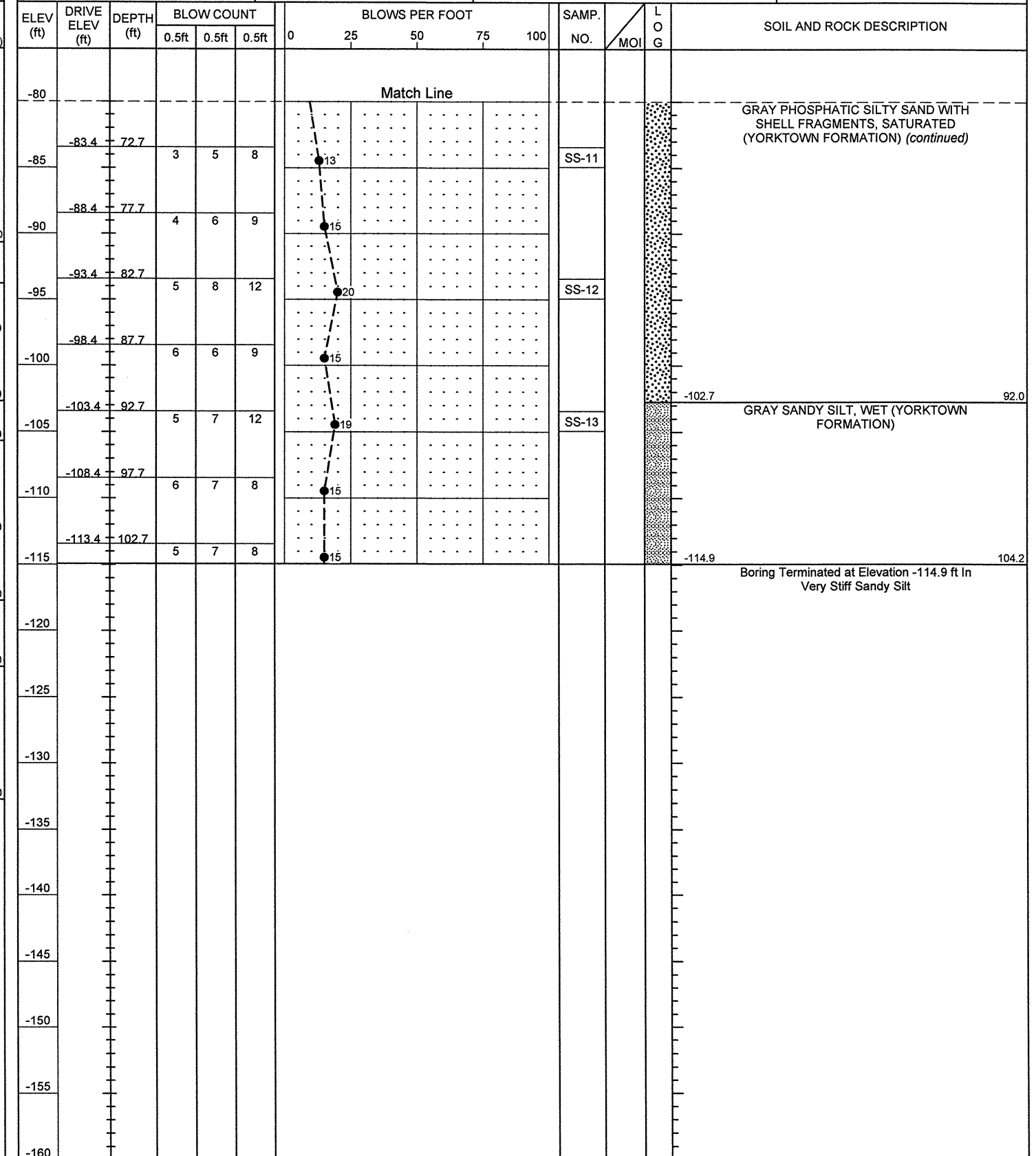
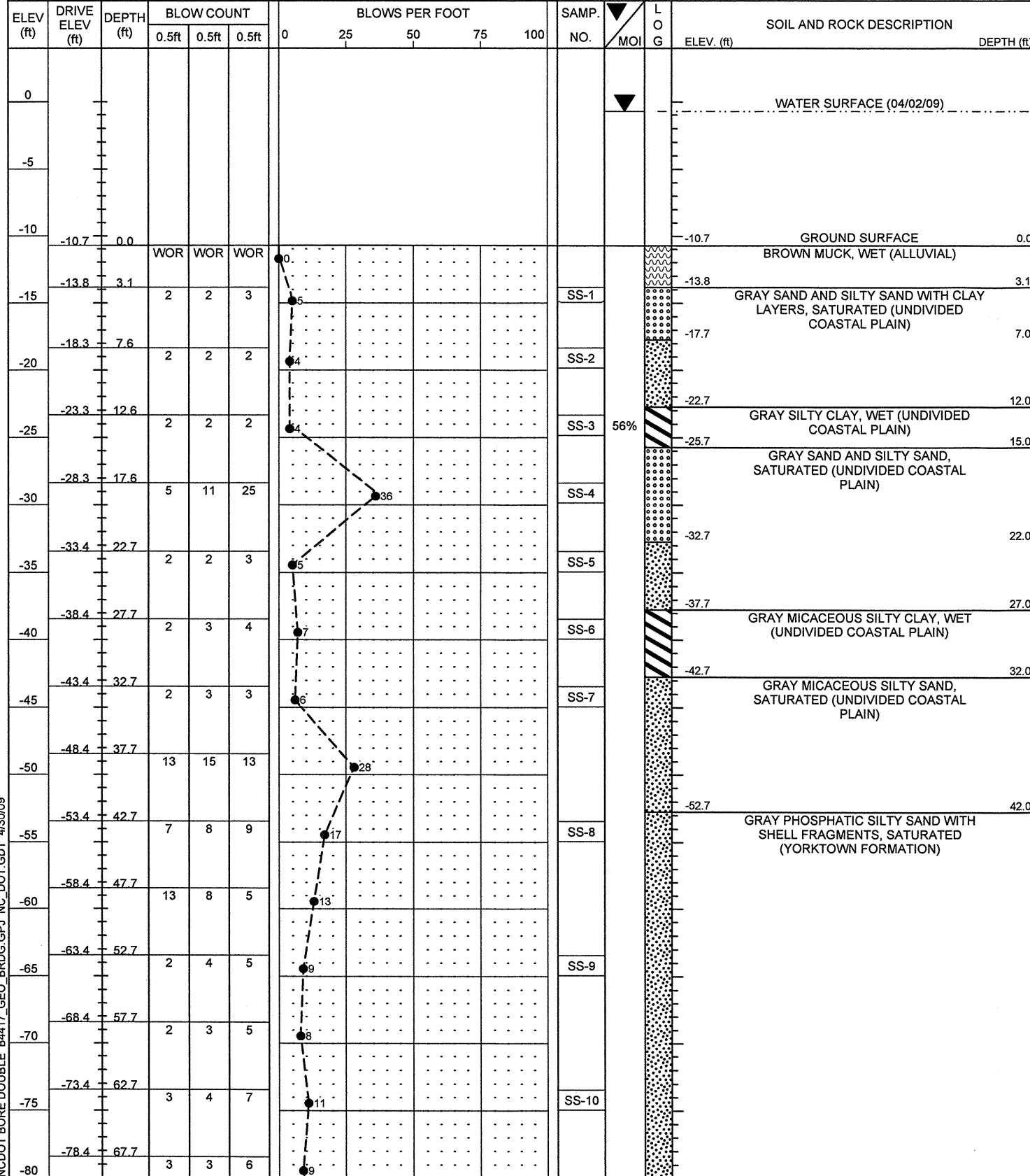
PROJECT NO. 33693.1.1	ID. B-4417	COUNTY BEAUFORT	GEOLOGIST Dillard, S. C.
SITE DESCRIPTION BRIDGE NO. 59 ON NC 99 OVER JACK CREEK			GROUND WTR (ft)
BORING NO. B1-B	STATION 16+35	OFFSET 5ft RT	ALIGNMENT -L-
COLLAR ELEV. 5.1 ft	TOTAL DEPTH 120.1 ft	NORTHING 639,107	EASTING 2,692,678
DRILL MACHINE Mobile B-57	DRILL METHOD Mud Rotary	HAMMER TYPE Manual	
START DATE 04/02/09	COMP. DATE 04/02/09	SURFACE WATER DEPTH N/A	DEPTH TO ROCK N/A



NCDOT BORE DOUBLE B4417\_GEO\_BRDG.GPJ\_NC\_DOT.GDT\_4/30/09

PROJECT NO. 33693.1.1	ID. B-4417	COUNTY BEAUFORT	GEOLOGIST Dillard, S. C.
SITE DESCRIPTION BRIDGE NO. 59 ON NC 99 OVER JACK CREEK			GROUND WTR (ft)
BORING NO. B2-A	STATION 16+85	OFFSET 6ft LT	ALIGNMENT -L-
COLLAR ELEV. -10.7 ft	TOTAL DEPTH 104.2 ft	NORTHING 639,156	EASTING 2,692,694
DRILL MACHINE Mobile B-57	DRILL METHOD Mud Rotary	HAMMER TYPE Manual	
START DATE 04/02/09	COMP. DATE 04/02/09	SURFACE WATER DEPTH 10.0ft	DEPTH TO ROCK N/A

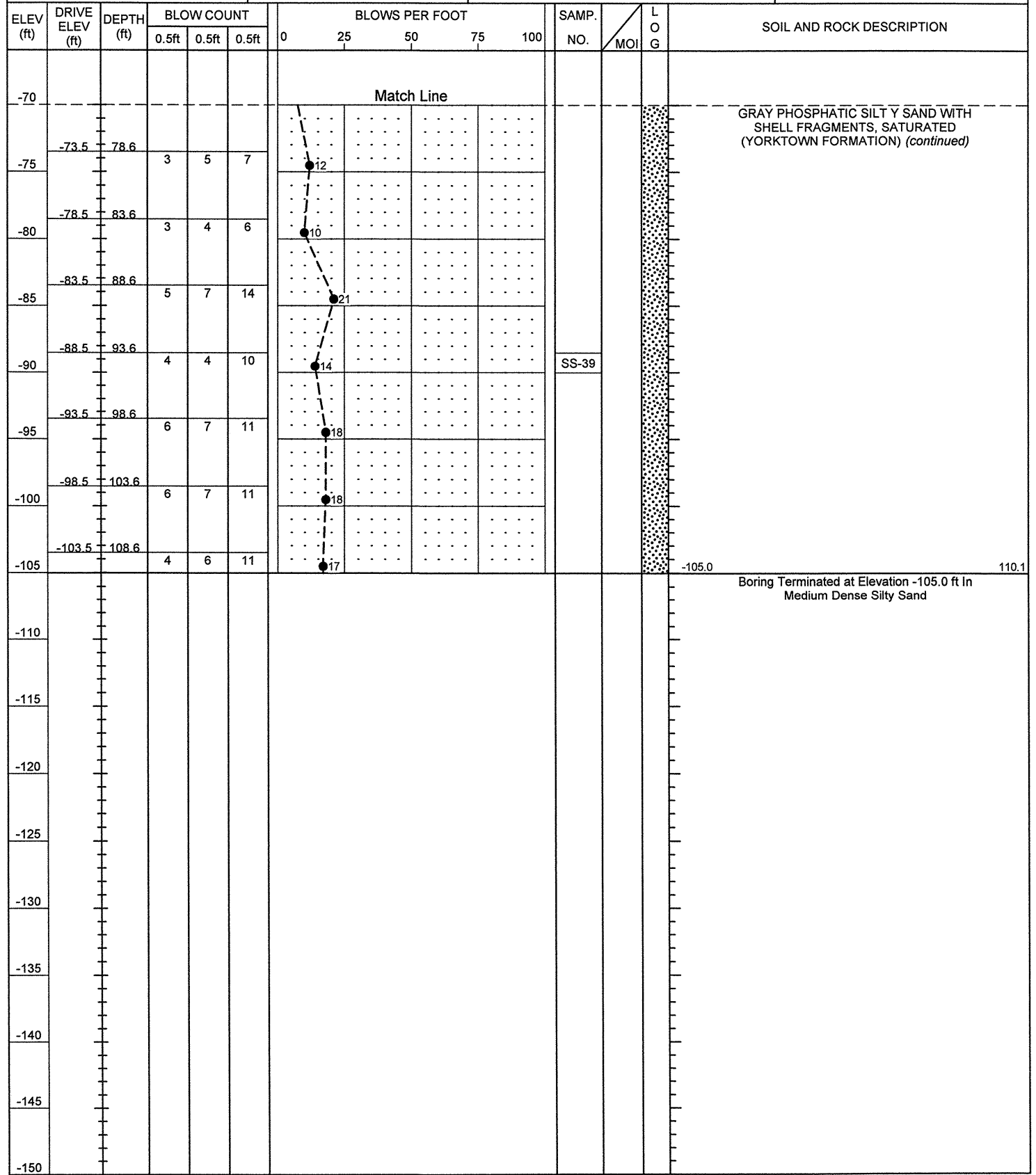
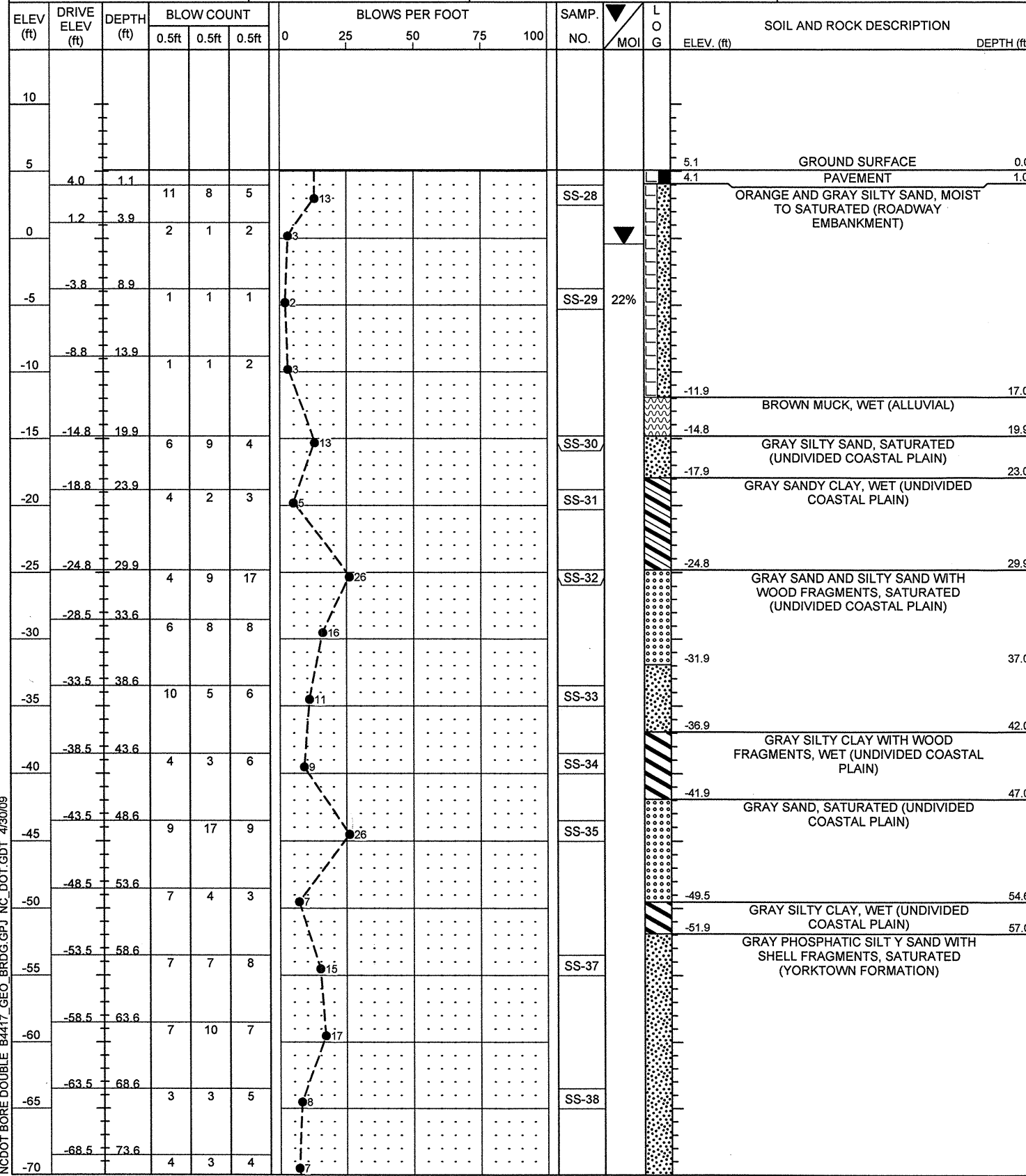
PROJECT NO. 33693.1.1	ID. B-4417	COUNTY BEAUFORT	GEOLOGIST Dillard, S. C.
SITE DESCRIPTION BRIDGE NO. 59 ON NC 99 OVER JACK CREEK			GROUND WTR (ft)
BORING NO. B2-A	STATION 16+85	OFFSET 6ft LT	ALIGNMENT -L-
COLLAR ELEV. -10.7 ft	TOTAL DEPTH 104.2 ft	NORTHING 639,156	EASTING 2,692,694
DRILL MACHINE Mobile B-57	DRILL METHOD Mud Rotary	HAMMER TYPE Manual	
START DATE 04/02/09	COMP. DATE 04/02/09	SURFACE WATER DEPTH 10.0ft	DEPTH TO ROCK N/A



NCDOT BORE DOUBLE B4417\_GEO\_BRDG.GPJ\_NC\_DOT.GDT 4/30/09

PROJECT NO. 33693.1.1	ID. B-4417	COUNTY BEAUFORT	GEOLOGIST Dillard, S. C.
SITE DESCRIPTION BRIDGE NO. 59 ON NC 99 OVER JACK CREEK			GROUND WTR (ft)
BORING NO. B3-B	STATION 17+35	OFFSET 5ft RT	ALIGNMENT -L-
COLLAR ELEV. 5.1 ft	TOTAL DEPTH 110.1 ft	NORTHING 639,194	EASTING 2,692,728
DRILL MACHINE Mobile B-57	DRILL METHOD Mud Rotary	HAMMER TYPE Manual	
START DATE 04/02/09	COMP. DATE 04/02/09	SURFACE WATER DEPTH N/A	DEPTH TO ROCK N/A

PROJECT NO. 33693.1.1	ID. B-4417	COUNTY BEAUFORT	GEOLOGIST Dillard, S. C.
SITE DESCRIPTION BRIDGE NO. 59 ON NC 99 OVER JACK CREEK			GROUND WTR (ft)
BORING NO. B3-B	STATION 17+35	OFFSET 5ft RT	ALIGNMENT -L-
COLLAR ELEV. 5.1 ft	TOTAL DEPTH 110.1 ft	NORTHING 639,194	EASTING 2,692,728
DRILL MACHINE Mobile B-57	DRILL METHOD Mud Rotary	HAMMER TYPE Manual	
START DATE 04/02/09	COMP. DATE 04/02/09	SURFACE WATER DEPTH N/A	DEPTH TO ROCK N/A

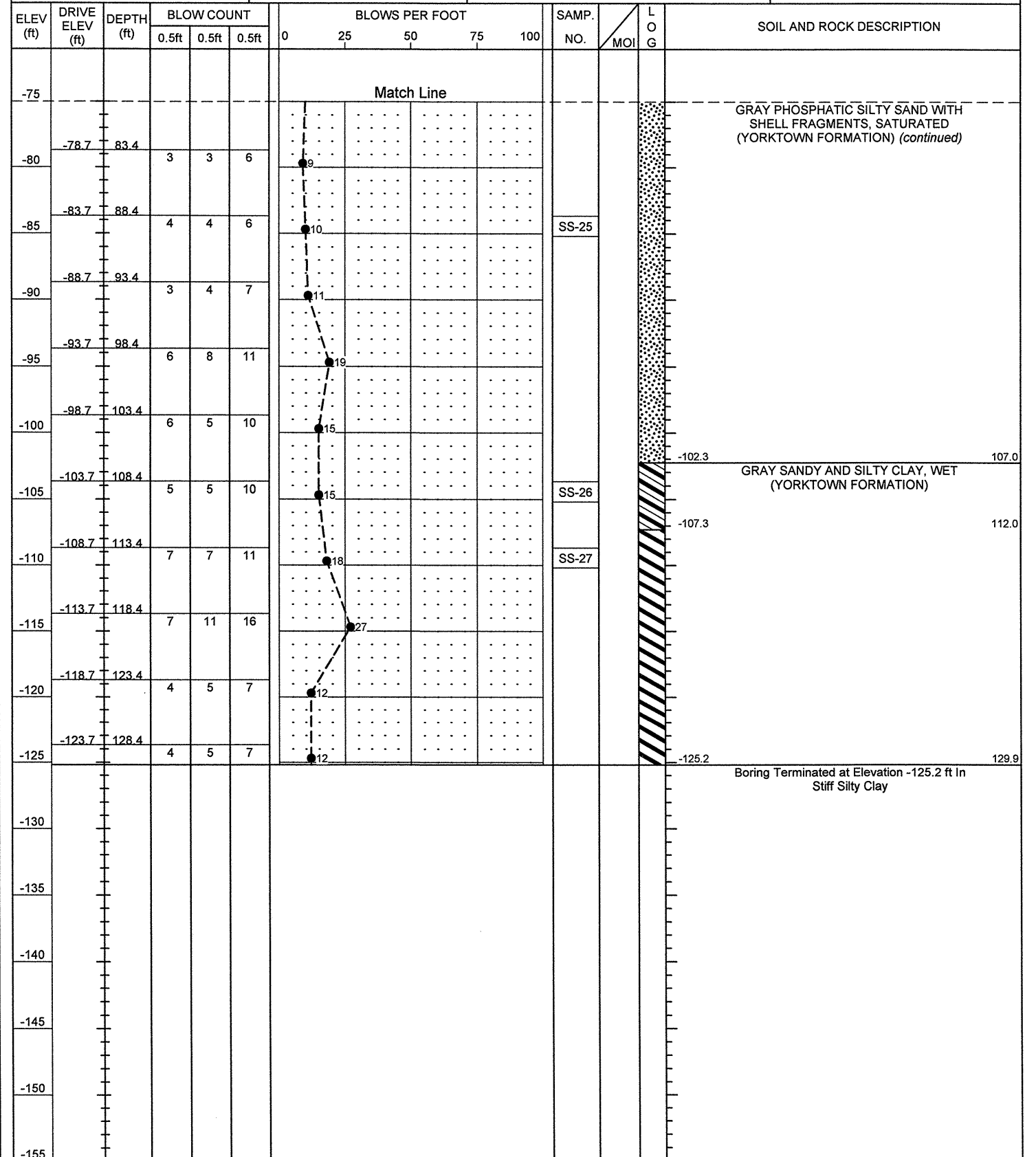
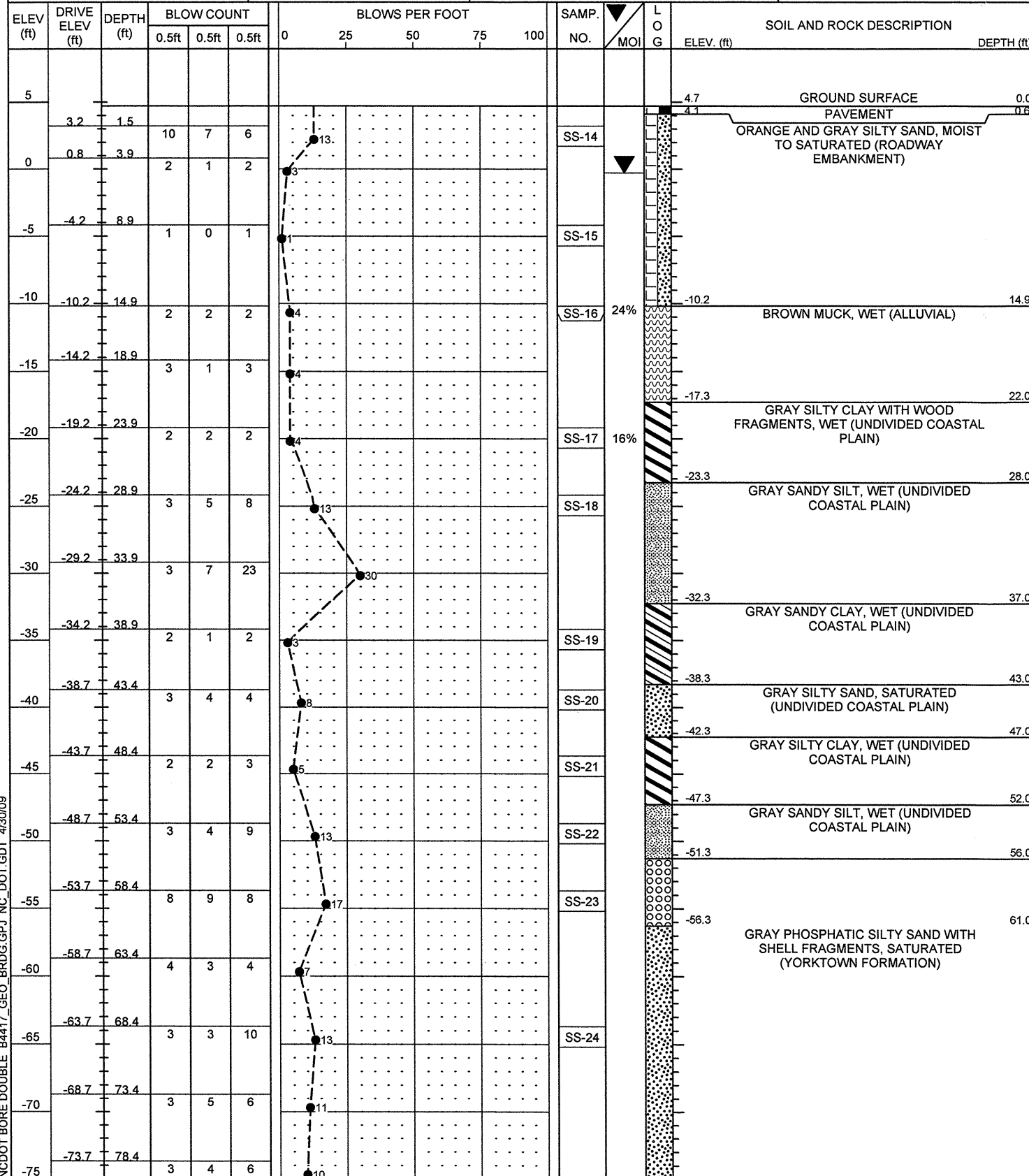


NCDOT BORE DOUBLE B4417\_GEO\_BRDG.GPJ\_NC\_DOT.GDT\_4/30/09



PROJECT NO. 33693.1.1	ID. B-4417	COUNTY BEAUFORT	GEOLOGIST Dillard, S. C.
SITE DESCRIPTION BRIDGE NO. 59 ON NC 99 OVER JACK CREEK			GROUND WTR (ft)
BORING NO. EB2-A	STATION 17+85	OFFSET 5ft LT	ALIGNMENT -L-
COLLAR ELEV. 4.7 ft	TOTAL DEPTH 129.9 ft	NORTHING 639,243	EASTING 2,692,744
DRILL MACHINE Mobile B-57	DRILL METHOD Mud Rotary	HAMMER TYPE Manual	
START DATE 04/02/09	COMP. DATE 04/02/09	SURFACE WATER DEPTH N/A	DEPTH TO ROCK N/A

PROJECT NO. 33693.1.1	ID. B-4417	COUNTY BEAUFORT	GEOLOGIST Dillard, S. C.
SITE DESCRIPTION BRIDGE NO. 59 ON NC 99 OVER JACK CREEK			GROUND WTR (ft)
BORING NO. EB2-A	STATION 17+85	OFFSET 5ft LT	ALIGNMENT -L-
COLLAR ELEV. 4.7 ft	TOTAL DEPTH 129.9 ft	NORTHING 639,243	EASTING 2,692,744
DRILL MACHINE Mobile B-57	DRILL METHOD Mud Rotary	HAMMER TYPE Manual	
START DATE 04/02/09	COMP. DATE 04/02/09	SURFACE WATER DEPTH N/A	DEPTH TO ROCK N/A



NCDOT BORE DOUBLE B4417\_GEO\_BRDG.GPJ\_NC\_DOT.GDT\_4/30/09

BRIDGE NO. 59 ON NC 99 OVER JACK CREEK AT -L- STA. 16+85

SOIL TEST RESULTS EB1-A

SAMPLE NO.	OFFSET	STATION	DEPTH INTERVAL	AASHTO CLASS.	LL.	P.I.	% BY WEIGHT				% PASSING (SIEVES)			% MOISTURE	% ORGANIC
							C. SAND	F. SAND	SILT	CLAY	10	40	200		
SS-52	5 LT	15+85	0.9-2.4	A-2-4(0)	21	3	36.7	41.3	8.9	13.0	100	90	25	-	-
SS-53	5 LT	15+85	8.8-10.3	A-2-4(0)	24	6	34.3	34.3	11.3	20.1	100	93	33	-	-
SS-54	5 LT	15+85	13.4-14.9	A-5(7)	95	7	30.1	16.0	29.8	24.1	97	74	53	321.9	31.9
SS-55	5 LT	15+85	18.4-19.9	A-4(0)	22	4	3.0	63.0	15.9	18.1	100	100	38	-	-
SS-56	5 LT	15+85	28.4-29.9	A-4(5)	31	10	9.4	39.9	42.6	8.0	100	94	65	47.6	-
SS-57	5 LT	15+85	38.4-39.9	A-7-5(6)	45	12	14.8	34.1	39.0	12.0	100	90	56	80.9	10.4
SS-58	5 LT	15+85	43.4-44.9	A-7-5(34)	61	31	3.0	5.2	43.6	48.1	100	98	93	-	-
SS-59	5 LT	15+85	48.4-49.9	A-2-4(0)	23	NP	2.7	81.5	9.7	6.0	100	100	22	-	-
SS-60	5 LT	15+85	53.4-55.9	A-3(0)	19	NP	73.8	21.5	2.7	2.0	94	55	5	-	-
SS-61	5 LT	15+85	58.4-59.9	A-2-4(0)	24	NP	44.3	42.5	6.1	7.0	95	65	15	-	-
SS-62	5 LT	15+85	68.4-69.9	A-2-4(0)	23	NP	13.6	68.6	6.7	11.0	100	98	21	-	-
SS-63	5 LT	15+85	78.4-79.9	A-2-4(0)	25	4	9.3	63.9	9.7	17.1	100	100	30	-	-
SS-64	5 LT	15+85	93.4-94.9	A-2-4(0)	22	NP	10.0	75.8	5.1	9.0	100	99	15	-	-
SS-65	5 LT	15+85	108.4-109.9	A-6(3)	34	12	1.2	56.2	18.6	24.1	100	100	51	-	-

SOIL TEST RESULTS B1-B

SAMPLE NO.	OFFSET	STATION	DEPTH INTERVAL	AASHTO CLASS.	LL.	P.I.	% BY WEIGHT				% PASSING (SIEVES)			% MOISTURE	% ORGANIC
							C. SAND	F. SAND	SILT	CLAY	10	40	200		
SS-40	5 RT	16+35	1.3-2.8	A-2-4(0)	23	NP	14.9	63.9	5.1	16.1	100	96	23	-	-
SS-41	5 RT	16+35	9.1-10.6	A-2-4(0)	23	NP	22.5	56.9	8.5	12.1	100	95	23	25.3	-
SS-42	5 RT	16+35	18.6-19.4	A-4(0)	23	7	4.2	57.1	14.6	24.1	100	100	43	-	-
SS-43	5 RT	16+35	19.4-20.1	A-3(0)	22	NP	18.3	74.0	3.7	4.0	100	97	9	-	-
SS-44	5 RT	16+35	23.6-25.1	A-6(13)	37	23	12.9	22.5	30.5	34.2	100	95	69	-	-
SS-45	5 RT	16+35	38.6-40.1	A-4(0)	36	2	5.0	60.7	28.2	6.0	100	98	45	60.3	7.6
SS-46	5 RT	16+35	43.6-45.1	A-7-6(46)	68	40	1.0	3.0	39.7	56.3	100	99	97	-	-
SS-47	5 RT	16+35	48.6-50.1	A-3(0)	24	NP	16.9	75.0	4.1	4.0	100	99	10	-	-
SS-48	5 RT	16+35	58.6-60.1	A-2-4(0)	23	NP	40.5	47.2	5.2	7.0	95	68	14	-	-
SS-49	5 RT	16+35	68.6-70.1	A-2-4(0)	23	NP	7.2	69.8	8.9	14.0	100	100	26	37	-
SS-50	5 RT	16+35	93.6-95.1	A-2-4(0)	21	NP	10.6	75.0	5.3	9.0	100	99	16	-	-
SS-51	5 RT	16+35	108.6-110.1	A-4(3)	32	10	1.2	52.2	24.6	22.1	100	100	54	-	-

SOIL TEST RESULTS B2-A

SAMPLE NO.	OFFSET	STATION	DEPTH INTERVAL	AASHTO CLASS.	LL.	P.I.	% BY WEIGHT				% PASSING (SIEVES)			% MOISTURE	% ORGANIC
							C. SAND	F. SAND	SILT	CLAY	10	40	200		
SS-1	6 LT	16+85	3.1-4.1	A-3(0)	26	NP	24.9	68.3	4.8	2.0	100	97	8	-	-
SS-2	6 LT	16+85	8.1-9.1	A-2-4(0)	20	3	22.9	46.8	16.1	14.2	100	92	35	-	-
SS-3	6 LT	16+85	12.6-14.1	A-7-6(18)	46	22	14.4	9.5	51.8	24.3	100	90	79	56	-
SS-4	6 LT	16+85	17.6-19.1	A-3(0)	21	NP	74.3	21.4	2.3	2.0	99	59	5	-	-
SS-5	6 LT	16+85	22.7-24.2	A-2-4(0)	33	NP	6.8	73.0	15.1	5.1	100	98	26	-	-
SS-6	6 LT	16+85	27.7-29.2	A-7-6(26)	48	30	1.4	16.8	33.1	48.6	100	100	84	-	-
SS-7	6 LT	16+85	32.7-34.2	A-2-4(0)	27	9	30.9	36.8	13.1	19.3	100	85	34	-	-
SS-8	6 LT	16+85	42.7-44.2	A-2-4(0)	24	NP	41.7	43.2	6.0	9.1	94	67	16	-	-
SS-9	6 LT	16+85	52.7-54.2	A-2-4(0)	24	NP	7.2	70.2	8.4	14.2	100	100	26	-	-
SS-10	6 LT	16+85	62.7-64.2	A-2-4(0)	23	NP	12.9	66.8	7.2	13.2	100	100	23	-	-
SS-11	6 LT	16+85	72.7-74.2	A-2-4(0)	23	NP	6.5	70.7	8.6	14.2	100	100	26	-	-
SS-12	6 LT	16+85	82.7-84.2	A-2-4(0)	24	NP	5.9	76.6	4.4	13.2	100	99	19	-	-
SS-13	6 LT	16+85	92.7-94.2	A-4(1)	28	9	2.4	57.8	19.6	20.3	100	99	46	-	-

SOIL TEST RESULTS B3-B

SAMPLE NO.	OFFSET	STATION	DEPTH INTERVAL	AASHTO CLASS.	LL.	P.I.	% BY WEIGHT				% PASSING (SIEVES)			% MOISTURE	% ORGANIC
							C. SAND	F. SAND	SILT	CLAY	10	40	200		
SS-28	5 RT	17+35	1.1-2.6	A-2-4(0)	21	NP	20.7	60.9	4.3	14.1	91	85	19	-	-
SS-29	5 RT	17+35	8.9-10.4	A-2-4(0)	18	1	12.9	53.1	16.0	18.1	97	93	35	22.1	-
SS-30	5 RT	17+35	19.9-20.4	A-2-4(0)	20	NP	27.1	60.5	4.3	8.0	100	94	14	-	-
SS-31	5 RT	17+35	23.9-25.4	A-6(6)	30	12	9.4	39.0	37.5	14.1	100	95	65	-	-
SS-32	5 RT	17+35	29.9-30.4	A-3(0)	23	NP	74.2	22.3	3.5	0.0	100	58	5	-	-
SS-33	5 RT	17+35	38.6-40.1	A-2-4(0)	29	NP	10.8	76.5	5.7	7.0	100	98	15	-	-
SS-34	5 RT	17+35	43.6-45.1	A-7-6(44)	68	44	2.2	8.6	32.9	56.3	100	99	90	-	-
SS-35	5 RT	17+35	48.6-50.1	A-3(0)	21	NP	82.9	12.9	1.2	3.0	100	68	5	-	-
SS-37	5 RT	17+35	58.6-60.1	A-2-4(0)	25	NP	40.9	37.5	7.5	14.1	89	64	22	-	-
SS-38	5 RT	17+35	68.6-70.1	A-2-4(0)	23	NP	6.8	70.1	9.0	14.1	100	100	27	-	-
SS-39	5 RT	17+35	93.6-95.1	A-2-4(0)	22	NP	9.2	75.6	5.1	10.1	100	100	16	-	-

SOIL TEST RESULTS EB2-A

SAMPLE NO.	OFFSET	STATION	DEPTH INTERVAL	AASHTO CLASS.	LL.	P.I.	% BY WEIGHT				% PASSING (SIEVES)			% MOISTURE	% ORGANIC
							C. SAND	F. SAND	SILT	CLAY	10	40	200		
SS-14	5' LT	17+85	1.5-3.0	A-2-4(0)	15	NP	26.8	60.2	2.9	10.1	100	94	15	-	-
SS-15	5' LT	17+85	8.9-10.4	A-2-4(0)	20	NP	15.1	67.7	5.1	12.1	100	95	19	-	-
SS-16	5' LT	17+85	14.9-15.4	A-2-4(0)	39	NP	23.8	57.6	6.5	12.1	75	65	15	23.8	43.2
SS-17	5' LT	17+85	23.9-25.4	A-7-6(15)	44	26	4.8	33.4	23.5	38.3	100	99	67	16	-
SS-18	5' LT	17+85	28.9-30.4	A-4(0)	21	NP	1.0	67.1	15.8	16.1	100	100	50	-	-
SS-19	5' LT	17+85	38.9-40.4	A-6(6)	34	16	18.1	29.6	22.1	30.2	100	91	57	-	-
SS-20	5' LT	17+85	43.4-44.9	A-2-4(0)	20	NP	29.2	59.4	3.3	8.1	100	96	13	-	-
SS-21	5' LT	17+85	48.4-49.9	A-7-5(21)	54	23	3.8	16.5	49.4	30.2	100	98	82	-	-
SS-22	5' LT	17+85	53.4-54.9	A-4(0)	27	4	4.0	60.0	9.8	26.2	100	99	50	-	-
SS-23	5' LT	17+85	58.4-59.9	A-1-b(0)	23	NP	46.9	37.1	3.9	12.1	77	50	15	-	-
SS-24	5' LT	17+85	68.4-69.9	A-2-4(0)	20	NP	7.0	72.1	6.7	14.1	100	99	25	-	-
SS-25	5' LT	17+85	88.4-89.9	A-2-4(0)	21	NP	7.0	71.5	5.3	16.1	100	100	26	-	-
SS-26	5' LT	17+85	108.4-109.9	A-6(3)	33	15	1.8	59.0	13.0	26.2	100	99	46	15.5	-
SS-27	5' LT	17+85	113.4-114.9	A-7-6(10)	46	18	2.2	47.5	18.0	32.2	100	99	63	-	-



**FIELD  
SCOUR REPORT**

WBS: 33693.1.1 TIP: B-4417 COUNTY: BEAUFORT

DESCRIPTION(1): BRIDGE NO. 59 ON NC 99 OVER JACK CREEK

**EXISTING BRIDGE**

Information from: Field Inspection  Microfilm \_\_\_\_\_ (reel \_\_\_\_\_ pos: \_\_\_\_\_)  
Other (explain) \_\_\_\_\_

Bridge No.: 59 Length: 75' Total Bents: 4 Bents in Channel: 2 Bents in Floodplain: 2  
Foundation Type: WOODEN PILES

**EVIDENCE OF SCOUR(2)**

Abutments or End Bent Slopes: NONE NOTED

Interior Bents: NONE NOTED

Channel Bed: NONE NOTED

Channel Bank: NONE NOTED

**EXISTING SCOUR PROTECTION**

Type(3): RIP RAP

Extent(4): 6' OUTSIDE EDGE OF BRIDGE

Effectiveness(5): EFFECTIVE

Obstructions(6): NONE NOTED

**INSTRUCTIONS**

- 1 Describe the specific site's location, including route number and body of water crossed.
- 2 Note scour evidence at existing end bents or abutments (e.g. undermining, sloughing, degradations).
- 3 Note existing scour protection (e.g. rip rap).
- 4 Describe extent of existing scour protection.
- 5 Describe whether or not the scour protection appears to be working.
- 6 Note obstructions such as dams, fallen trees, debris at bents, etc.
- 7 Describe the channel bed material based on observation and/or samples. Include any lab results with report.
- 8 Describe the channel bank material based on observation and/or samples. Include any lab results with report.
- 9 Describe the material covering the banks (e.g. grass, trees, rip rap, none).
- 10 Determine the approximate floodplain width from field observation or a topographic map.
- 11 Describe the material covering the floodplain (e.g. grass, trees, crops).
- 12 Use professional judgement to specify if the stream is degrading, aggrading, or static.
- 13 Describe potential and direction of the stream to migrate laterally during the bridge's life (approx. 100 years).
- 14 Give the design scour elevation (DSE) expected over the life of the bridge (approx. 100 years). This elevation can be given as a range across the site, or for each bent. Discuss the relationship between the Hydraulics Unit theoretical scour and the DSE. If the DSE is dependent on scour counter measures, explain (e.g. rip rap armoring on slopes). The DSE is based on the erodability of materials, giving consideration to the influence of joints, foliation, bedding characteristics, % core recovery, % RQD, differential weathering, shear strength, observations at existing structures, other tests deemed appropriate, and overall geologic conditions at the site.

**DESIGN INFORMATION**

Channel Bed Material(7): MUCK

Channel Bank Material(8): SAND

Channel Bank Cover(9): GRASS AND SHRUBS

Floodplain Width(10): APPROX. 500'

Floodplain Cover(11): TREES AND SHRUBS

Stream is(12): Aggrading \_\_\_\_\_ Degrading \_\_\_\_\_ Static

Channel Migration Tendency(13): SLIGHTLY TO THE NORTH TOWARD END BENT 2

Observations and Other Comments: \_\_\_\_\_

**DESIGN SCOUR ELEVATIONS(14)**

Feet  Meters \_\_\_\_\_

**BENTS**

B1	B2	B3											
-15.7	-17	-14.8											

Comparison of DSE to Hydraulics Unit theoretical scour:  
Geotechnical analysis of the DSE agrees with the Hydraulic Unit's 100yr scour.

**SOIL ANALYSIS RESULTS FROM CHANNEL BED AND BANK MATERIAL**

Bed or Bank													
Sample No.													
Retained #4													
Passed #10													
Passed #40													
Passed #200													
Coarse Sand													
Fine Sand													
Silt													
Clay													
LL													
PI													
AASHTO													
Station													
Offset													
Depth													

See Sheet 9,  
"Soil Test Results",  
for samples:  
  
Channel Bed: SS-16  
Channel Bank: SS-29, SS-41

Reported by: Tyler Bottoms  
TYLER BOTTOMS

Date: 4/13/2009