

TIP PROJECT: R-5118

CONTRACT: C202300

STATE OF NORTH CAROLINA
DIVISION OF HIGHWAYS

**PLAN FOR PROPOSED
TRAFFIC CONTROL, MARKING & DELINEATION
SWAIN COUNTY**

STATE PROJECT REFERENCE NO.	SHEET NO.
R-5118	TCP-1

LEGEND

- GENERAL**
- DIRECTION OF TRAFFIC FLOW
 - NORTH ARROW
 - PROPOSED PVMT. EXIST. PVMT.
 - WORK AREA
 - REMOVAL OF EXISTING PAVEMENT
- TRAFFIC CONTROL DEVICES**
- TYPE I BARRICADE
 - TYPE II BARRICADE
 - TYPE III BARRICADE
 - CONE
 - DRUM
 - FLASHING ARROW PANEL (TYPE C)
 - TYPE 'B' WARNING LIGHT
 - STATIONARY SIGN
 - PORTABLE SIGN
 - STATIONARY OR PORTABLE SIGN
 - WARNING FLAGS
 - CRASH CUSHION
 - CHANGEABLE MESSAGE SIGN
 - TRUCK MOUNTED IMPACT ATTENUATOR (TMIA)
 - POLICE
 - FLAGGER
 - PORTABLE TRAFFIC SIGNAL
- PAVEMENT MARKINGS**
- CRYSTAL/CRYSTAL PAVEMENT MARKER
 - YELLOW/YELLOW PAVEMENT MARKER
 - CRYSTAL/RED PAVEMENT MARKER
 - PAVEMENT MARKING SYMBOLS

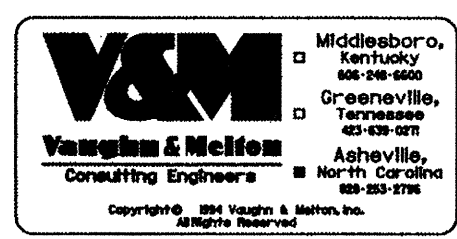
ROADWAY STANDARD DRAWINGS

THE FOLLOWING ROADWAY STANDARDS AS APPEAR IN "ROADWAY STANDARD DRAWINGS" - ROADWAY DESIGN UNIT-N.C. DEPARTMENT OF TRANSPORTATION-RALEIGH, N.C., DATED JULY 2006 ARE APPLICABLE TO THIS PROJECT AND BY REFERENCE HEREBY ARE CONSIDERED A PART OF THESE PLANS:

STD. NO.	TITLE
1101.02	TEMPORARY LANE CLOSURES
1101.03	TEMPORARY ROAD CLOSURES
1101.04	TEMPORARY SHOULDER CLOSURES
1101.05	WORK ZONE VEHICLE ACCESSES
1101.11	TRAFFIC CONTROL DESIGN TABLES
1110.01	STATIONARY WORK ZONE SIGNS
1110.02	PORTABLE WORK ZONE SIGNS
1130.01	DRUM
1135.01	CONES
1145.01	BARRICADES
1150.01	FLAGGERS
1160.01	TEMPORARY CRASH CUSHION - REFLECTIVE END TREATMENT
1170.01	PORTABLE CONCRETE BARRIER
1180.01	SKINNY - DRUM
1205.01	PAVEMENT MARKINGS - LINE TYPES & OFFSETS
1205.02	PAVEMENT MARKINGS - 2 LANE & MULTILANE ROADWAYS
1205.04	PAVEMENT MARKINGS - INTERSECTIONS

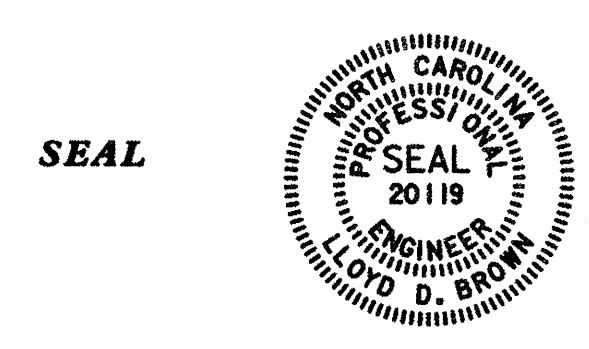
INDEX OF SHEETS

SHEET NO.	TITLE
TCP-1	LIST OF APPLICABLE ROADWAY STANDARD DRAWINGS, LEGEND AND INDEX OF SHEETS
TCP-2	GENERAL NOTES
TCP-3	PHASING
TCP-4	DETAILS 1-A, 1-B, 1-C & 1-D
TCP-5	DETAILS 1-E & 1-F
TCP-6	DETAILS 1-G & 1-H
TCP-7	DETAILS 1-I & 1-J
TCP-8	DETAIL 2-A & 2-B
TCP-9	DETAILS 2-C & 2-D
TCP-10	DETAILS 2-E & 2-F
TCP-11	DETAILS 2-G & 2-H
TCP-12	DETAIL DRAWING FOR TWO-WAY UNDIVIDED WORK ZONE WARNING SIGNS
PM-1	PAVEMENT MARKING SCHEDULE - TEMPORARY AND FINAL
PM-2	TEMPORARY PAVEMENT MARKING, DETAILS 3-A & 3-B
PM-3	TEMPORARY PAVEMENT MARKING, DETAILS 3-C & 3-D



SCALE: NONE
DATE: FEB. 2008
DWG. BY: JRB
DESIGN BY: ACC
REVIEWED BY: LDB

APPROVED:
DATE: 10/11/2008



PLAN PREPARED FOR: N.C.D.O.T. TRAFFIC CONTROL, MARKING & DELINEATION SECTION

L. D. BROWN, P.E. TRAFFIC CONTROL PROJECT ENGINEER
A. C. CARVER, P.E. TRAFFIC CONTROL PROJECT DESIGN ENGINEER
J. R. BAKER TRAFFIC CONTROL DESIGN ENGINEER / TECHNICIAN

PROJECT NOTES

PROJECT REFERENCE NO.	SHEET NO.
R-5118	TCP-2
RW SHEET NO.	

GENERAL NOTES

THE FOLLOWING GENERAL NOTES APPLY AT ALL TIMES FOR THE DURATION OF THE CONSTRUCTION PROJECT, EXCEPT WHEN OTHERWISE NOTED IN THE PLAN, OR DIRECTED BY THE ENGINEER.

- A) ADAPT THE TRAFFIC CONTROL PLANS, WHEN DIRECTED BY THE ENGINEER, TO MEET FIELD CONDITIONS TO PROVIDE SAFE AND EFFICIENT TRAFFIC MOVEMENT. CHANGES MAY BE REQUIRED WHEN PHYSICAL DIMENSIONS IN THE DETAIL DRAWINGS, STANDARD DETAILS AND ROADWAY DETAILS ARE NOT ATTAINABLE, OR RESULT IN DUPLICATE, OR UNDESIRED OVERLAPPING OF DEVICES. MODIFICATION MAY INCLUDE: MOVING, SUPPLEMENTING, COVERING OR REMOVAL OF DEVICES.

TIME RESTRICTIONS

- B) DO NOT CLOSE OR NARROW TRAVEL LANES AS FOLLOWS:

ROAD NAME	DAY AND TIME RESTRICTIONS
SLOPE STREET	MONDAY - FRIDAY: 6:00 AM TO 9:00 AM 4:00 PM TO 6:00 PM

HOLIDAY

1. FOR NEW YEAR'S, BETWEEN THE HOURS OF 6:00 A.M. DECEMBER 31ST TO 9:00 A.M. JANUARY 2ND. IF NEW YEAR'S DAY IS ON A SATURDAY OR A SUNDAY, THEN UNTIL 9:00 A.M. THE FOLLOWING TUESDAY.
 2. FOR EASTER, BETWEEN THE HOURS OF 6:00 A.M. THURSDAY AND 6:00 A.M. MONDAY.
 3. FOR MEMORIAL DAY, BETWEEN THE HOURS OF 6:00 A.M. FRIDAY TO 9:00 A.M. TUESDAY.
 4. FOR INDEPENDENCE DAY, BETWEEN THE HOURS OF 6:00 A.M. THE DAY BEFORE INDEPENDENCE DAY AND 9:00 A.M. THE DAY AFTER INDEPENDENCE DAY.
IF INDEPENDENCE DAY IS ON A SATURDAY OR SUNDAY, THEN BETWEEN THE HOURS OF 6:00 A.M. THE THURSDAY BEFORE INDEPENDENCE DAY AND 6:00 A.M. THE TUESDAY AFTER INDEPENDENCE DAY.
 5. FOR LABOR DAY, BETWEEN THE HOURS OF 6:00 A.M. FRIDAY TO 6:00 A.M. TUESDAY.
 6. FOR THANKSGIVING, BETWEEN THE HOURS OF 6:00 A.M. TUESDAY TO 9:00 A.M. MONDAY.
 7. FOR CHRISTMAS, BETWEEN THE HOURS OF 6:00 A.M. THE FRIDAY BEFORE THE WEEK OF CHRISTMAS DAY AND 9:00 A.M. THE FOLLOWING MONDAY AFTER THE WEEK OF CHRISTMAS.
- D) DO NOT STOP TRAFFIC FOR MORE THAN 10 MINUTES AS FOLLOWS:

ROAD NAME	OPERATION
SLOPE STREET	SHIFTING TRAFFIC

LANE AND SHOULDER CLOSURE REQUIREMENTS

- E) REMOVE LANE CLOSURE DEVICES FROM THE LANE WHEN WORK IS NOT BEING PERFORMED BEHIND THE LANE CLOSURE OR WHEN A LANE CLOSURE IS NO LONGER NEEDED, OR AS DIRECTED BY THE ENGINEER.
- F) WHEN PERSONNEL AND/ OR EQUIPMENT ARE WORKING ON THE SHOULDER ADJACENT TO AN UNDIVIDED FACILITY AND WITHIN 5 FT (1.5m) OF AN OPEN TRAVEL LANE, CLOSE THE NEAREST OPEN TRAVEL LANE USING ROADWAY STANDARD DRAWING NO. 1101.02 UNLESS THE WORK AREA IS PROTECTED BY BARRIER OR GUARDRAIL.

LANE AND SHOULDER CLOSURE REQUIREMENTS

- G) WHEN PERSONNEL AND/ OR EQUIPMENT ARE WORKING WITHIN A LANE OF TRAVEL OF AN UNDIVIDED OR DIVIDED FACILITY, CLOSE THE LANE ACCORDING TO THE TRAFFIC CONTROL PLANS, ROADWAY STANDARD DRAWINGS OR AS DIRECTED BY THE ENGINEER. CONDUCT THE WORK SO THAT ALL PERSONNEL AND/ OR EQUIPMENT REMAIN WITHIN THE CLOSED TRAVEL LANE.
- H) DO NOT WORK SIMULTANEOUSLY, ON BOTH SIDES OF AN OPEN TRAVELWAY, WITHIN THE SAME LOCATION, ON A TWO-LANE, TWO-WAY ROAD.
- I) DO NOT INSTALL MORE THAN ONE LANE CLOSURE, IN ANY ONE DIRECTION, ON SLOPE STREET.

PAVEMENT EDGE DROP OFF REQUIREMENTS

- J) BACKFILL AT A 6:1 SLOPE UP TO THE EDGE AND ELEVATION OF EXISTING PAVEMENT IN AREAS ADJACENT TO AN OPENED TRAVEL LANE THAT HAS A DROP-OFF AS FOLLOWS:
BACKFILL DROP-OFFS THAT EXCEED 2 INCHES ON ROADWAYS WITH POSTED SPEED LIMITS OF 45 MPH OR GREATER.
BACKFILL DROP-OFFS THAT EXCEED 3 INCHES ON ROADWAYS WITH POSTED SPEED LIMITS LESS THAN 45 MPH.
BACKFILL WITH SUITABLE COMPACTED MATERIAL, AS APPROVED BY THE ENGINEER, AT NO EXPENSE TO THE DEPARTMENT.
- K) DO NOT EXCEED A DIFFERENCE OF 1.5 INCHES IN ELEVATION BETWEEN OPEN LANES OF TRAFFIC. INSTALL ADVANCE WARNING "UNEVEN LANES" SIGNS (W8-11) 500 FT IN ADVANCE AND A MINIMUM OF ONCE EVERY MILE THROUGHOUT THE UNEVEN AREA.

SIGNING

- L) STATE FORCES WILL BE RESPONSIBLE FOR PERMANENT SIGNING.
- M) PROVIDE DETOUR SIGNING AND THE PROJECT LIMITS
- N) ENSURE ALL NECESSARY SIGNING IS IN PLACE PRIOR TO ALTERING ANY TRAFFIC PATTERN.
- O) INSTALL BLACK ON ORANGE "DIP" SIGNS (W8-2) 500 FT (150m) IN ADVANCE OF THE UNEVEN AREA.
- P) INSTALL BLACK ON ORANGE "BUMP" SIGNS (W8-1) 500 FT (150m) IN ADVANCE OF THE UNEVEN AREA.
- Q) INSTALL MOVABLE/ PORTABLE CONCRETE BARRIER ACCORDING TO THE TRAFFIC CONTROL PLANS A MAXIMUM OF TWO (2) WEEKS PRIOR TO BEGINNING WORK IN ANY LOCATION. ONCE MOVABLE/ PORTABLE CONCRETE BARRIER IS INSTALLED AT ANY LOCATION, PROCEED IN A CONTINUOUS MANNER TO COMPLETE THE PROPOSED WORK IN THAT LOCATION UNLESS OTHERWISE STATED IN THE TRAFFIC CONTROL PLANS OR AS DIRECTED BY THE ENGINEER.
- R) ONCE MOVABLE/ PORTABLE CONCRETE BARRIER IS INSTALLED AT ANY LOCATION AND NO WORK IS PERFORMED BEHIND THE MOVABLE/ PORTABLE CONCRETE BARRIER FOR A PERIOD LONGER THAN TWO (2) MONTHS, REMOVE/ RESET MOVABLE/ PORTABLE CONCRETE BARRIER AT NO COST TO THE DEPARTMENT UNLESS OTHERWISE STATED IN THE TRAFFIC CONTROL PLANS, BARRIER IS PROTECTING A HAZARD, OR AS DIRECTED BY THE ENGINEER.
- S) PROTECT THE APPROACH END OF MOVABLE/ PORTABLE CONCRETE BARRIER AT ALL TIMES DURING THE INSTALLATION AND REMOVAL OF THE BARRIER BY EITHER A TRUCK MOUNTED IMPACT ATTENUATOR (MAXIMUM 72 HOURS) OR A TEMPORARY CRASH CUSHION.
- T) OFFSET THE APPROACH END OF MOVABLE/ PORTABLE CONCRETE BARRIER A MINIMUM OF 15 FT FROM ONCOMING TRAFFIC OR PROTECT AT ALL TIMES BY A TEMPORARY CRASH CUSHION.
- U) INSTALL MOVABLE/ PORTABLE CONCRETE BARRIER WITH THE TRAFFIC FLOW, BEGINNING WITH THE UPSTREAM SIDE OF TRAFFIC. REMOVE MOVABLE/ PORTABLE CONCRETE BARRIER AGAINST THE TRAFFIC FLOW, BEGINNING WITH THE DOWN-STREAM SIDE OF TRAFFIC.
- V) INSTALL AND SPACE DRUMS NO GREATER THAN TWICE THE POSTED SPEED LIMIT (MPH) TO CLOSE OR KEEP CLOSED THE SECTION OF THE ROADWAY UNTIL THE BARRIER CAN BE PLACED.

TRAFFIC CONTROL DEVICES

- W) SPACE CHANNELIZING DEVICES IN WORK AREAS NO GREATER THAN TWICE THE POSTED SPEED LIMIT (MPH), EXCEPT 10 FT (2m) ON-CENTER IN RADII, AND 3 FT (1m) OFF THE EDGE OF AN OPEN TRAVELWAY, WHEN LANE CLOSURES ARE NOT IN EFFECT.

PAVEMENT MARKINGS AND MARKERS

- X) INSTALL PAVEMENT MARKINGS AND PAVEMENT MARKERS ON THE FINAL SURFACE AS SHOWN IN THE PAVEMENT MARKING PLAN.

- Y) INSTALL TEMPORARY PAVEMENT MARKINGS AND TEMPORARY PAVEMENT MARKERS ON INTERIM LAYERS OF PAVEMENT AS FOLLOWS:

ROAD NAME	MARKING
ALL ROADS	PAINT

- Z) PLACE ONE APPLICATION OF PAINT FOR TEMPORARY TRAFFIC PATTERNS. PLACE A SECOND APPLICATION OF PAINT SIX (6) MONTHS AFTER THE INITIAL APPLICATION AND EVERY SIX MONTHS AS DIRECTED BY THE ENGINEER.

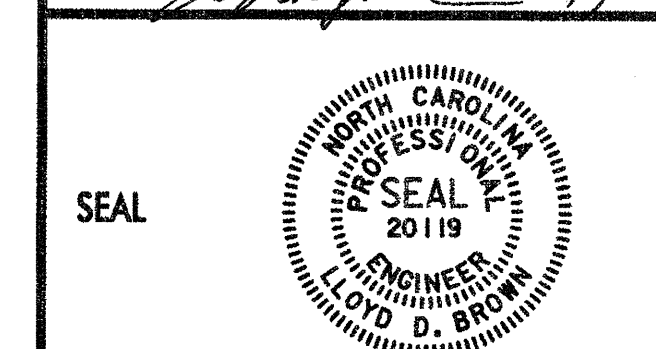
- AA) TIE PROPOSED PAVEMENT MARKING LINES TO EXISTING PAVEMENT MARKING LINES.

- BB) REMOVE/REPLACE ANY CONFLICTING/DAMAGED PAVEMENT MARKINGS AND MARKERS BY THE END OF EACH DAY'S OPERATION.

MISCELLANEOUS

- CC) IN THE EVENT A TIE-IN CANNOT BE MADE IN ONE DAYS TIME, BRING THE TIE-IN AREA TO AN APPROPRIATE ROADWAY ELEVATION, AS DETERMINED BY THE ENGINEER. PLACE BLACK ON ORANGE "LOOSE GRAVEL" SIGNS (W8-7) AND BLACK ON ORANGE "PAVEMENT ENDS" SIGNS (W8-4) 500 FT (150m) AND 1000 FT (300m) RESPECTIVELY IN ADVANCE OF THE UNEVEN AREAS. USE DRUMS TO DELINEATE THE EDGE OF ROADWAY ALONG UNPAVED AREAS.

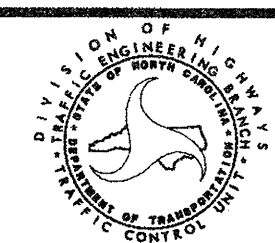
APPROVED:  DATE: 1/14/08



SEAL

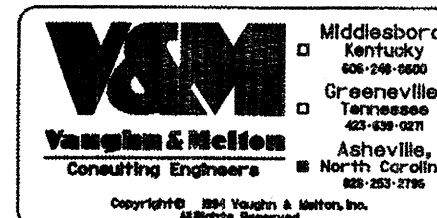
PROJECT NOTES

SCALE: NONE
DATE: FEB. 08
DWG. BY: JRB
DESIGN BY: ACC
REVIEWED BY: LDB



REVISIONS	

CADD FILE: slope02tcp.dgn



PROJECT PHASING

PHASE I

STEP 1:
 ERECT WORK ZONE ADVANCED WARNING SIGNS USING DETAIL DRAWINGS FOR WORK ZONE SIGNS. (SEE TCP-12)

STEP 2:
 USING ROADWAY STANDARD NO. 1101.02 SHEET 1 OF 7, AND FLAGGERS, CONSTRUCT SEWER LINE FROM:
 -L- STA. 9+82.23 TO STA. 23+98.61
 -L- STA. 28+15.27 TO STA. 29+26.67

USING ROADWAY STANDARD NO 1101.02 SHEET 1 OF 7, AND FLAGGERS, CONSTRUCT WATERLINE AND APPURTENANCES FROM:
 -L- STA. 10+11.65 TO STA. 25+46.36
 -L-REV- STA. 36+81.60 TO STA. 41+34.82

USING ROADWAY STANDARD NO. 1101.02, SHEET 1 OF 7, AND FLAGGERS, PLACE PORTABLE CONCRETE BARRIER (PCB) ON THE EAST SIDE OF SLOPE STREET FROM STA. 40+45 EASTSIDE -L-REV- TO STA. 41+15 EASTSIDE -L-REV- (SEE DETAIL 1-A, TCP-4).
 USING ROADWAY STANDARD NO 1101.02, SHEET 1 OF 7, AND FLAGGERS, CONSTRUCT PROPOSED DRAINAGE FROM:

- STRUCTURE [1A] STA. 10+10 -L- TO STRUCTURE [2A] STATION 11+87 -L- UTILIZING A SOLID COVER (SEE SHEET 2-A OF ROADWAY PLANS) ON STRUCTURE [2A] WITH COVER OF STRUCTURE TEMPORARILY SET AT EXISTING PAVEMENT GRADE AND ELEVATION (SEE DETAIL 1-B, TCP-4).
- STRUCTURE [3] STA. 13+05 -L- TO STRUCTURE [6] STA. 13+40 -L- UTILIZING A SOLID COVER (SEE SHEET 2-A OF ROADWAY PLANS) ON STRUCTURES [3] AND [4] WITH COVERS OF STRUCTURES TEMPORARILY SET AT EXISTING PAVEMENT GRADE AND ELEVATION (SEE DETAIL 1-C, TCP-4).
- STRUCTURE [6A] STA. 15+03 -L- TO STRUCTURE [6C] STA. 14+80 -L-, INCLUDING STRUCTURES [6B] AND [6D], UTILIZING A SOLID COVER (SEE SHEET 2-A OF ROADWAY PLANS) ON STRUCTURE [6A] WITH COVER OF STRUCTURE [6A] TEMPORARILY SET AT EXISTING PAVEMENT GRADE AND ELEVATION (SEE DETAIL 1-C, TCP-4).
- STRUCTURE [7A] STA 17+85 -L- TO STRUCTURE [7] STA 18+11 -L-.
- STRUCTURE [8A] STA. 20+30 -L- TO STRUCTURE [11] STA. 23+19 -L-.
- STRUCTURE [13A] STA. 25+00 -L- TO STRUCTURE [14] STA. 25+75 -L-, INCLUDING STRUCTURE [12], UTILIZING A SOLID COVER (SEE SHEET 2-A OF ROADWAY PLANS) ON STRUCTURES [13] AND [14] WITH COVERS TEMPORARILY SET AT EXISTING PAVEMENT GRADE AND ELEVATION. (SEE DETAIL 1-D, TCP-4).
- STRUCTURE [15A] STA 28+87 -L- TO STRUCTURE [17] STA. 29+46 -L-.
- STRUCTURE [17B] STA 32+33 -L- TO STRUCTURE [17A] STA 32+34 -L-.
- STRUCTURE [18] STA 33+28 -L- TO STRUCTURE [21] STA 35+25 -L-.
- STRUCTURE [23] STA. 37+40 -L-REV- TO STRUCTURE [27A] STA. 39+69 -L-REV-, INCLUDING STRUCTURE [27B], UTILIZING A SOLID COVER (SEE SHEET 2-A OF ROADWAY PLANS) ON STRUCTURES [23], [24], [25], AND [25A] WITH COVERS TEMPORARILY SET AT EXISTING PAVEMENT GRADE AND ELEVATION (SEE DETAIL 1-E, TCP-5)
- STRUCTURE [28A] STA 41+90 -L-REV- TO STRUCTURE [28] STA. 41+93 -L-REV- UTILIZING A SOLID COVER (SEE SHEET 2-A OF ROADWAY PLANS) ON STRUCTURE [28] WITH COVER TEMPORARILY SET AT EXISTING PAVEMENT GRADE AND ELEVATION (SEE DETAIL 1-A, TCP-4)

NOTE: WORK ON THE CULVERT EXTENSION AT STA. 40+70.41 EASTSIDE -L-REV- MUST BE COMPLETED IN A CONTINUOUS OPERATION.

PHASE I (CONTINUED)

STEP 3:
 USING ROADWAY STANDARD NO. 1101.02, SHEET 1 OF 7, AND FLAGGERS, CONSTRUCT CULVERT EXTENSION STA. 40+70.4 EASTSIDE -L-REV-. (SEE DETAIL 1-A, TCP-4)

NOTE: AS FIELD CONDITIONS ALLOW, USE INCIDENTAL STONE AS NEEDED TO MAINTAIN TRAFFIC ON SITE DURING PHASE I, STEP 3 IN LIEU OF TEMPORARY LANE CLOSURES.

USING ROADWAY STANDARD NO. 1101.02, SHEET 1 OF 7, AND FLAGGERS, CONSTRUCT PROPOSED CURB & GUTTER AND ASPHALT UP TO, BUT NOT INCLUDING, THE FINAL LAYER OF SURFACE COURSE FROM:

- STA. 10+20 EASTSIDE -L- TO STA. 36+06.28 EASTSIDE -L-REV- (PROPOSED CONSTRUCTION NORTHBOUND). (SEE DETAILS 1-F, 1-G, 1-H, AND 1-I ON TCP-5 THROUGH TCP-7).
- STA. 36+06.28 WESTSIDE -L-REV- TO STA. 39+86.16 WESTSIDE -L-REV- (PROPOSED CONSTRUCTION SOUTHBOUND). (SEE DETAIL 1-I ON TCP-7).
- STA. 39+86.16 EASTSIDE -L-REV- TO STA. 40+45 EASTSIDE -L-REV- (PROPOSED CONSTRUCTION NORTHBOUND). (SEE DETAIL 1-I ON TCP-7).
- STA. 41+15 EASTSIDE -L-REV- TO STA. 45+60 EASTSIDE -L-REV- (PROPOSED CONSTRUCTION NORTHBOUND). (SEE DETAILS 1-I AND 1-IA ON TCP-7).
- STA. 10+10 EASTSIDE -Y- TO STA. 12+10 EASTSIDE -Y- (SEE DETAIL 1-IA ON TCP-7).

STEP 4:
 AFTER CULVERT CONSTRUCTION AT STA. 40+70.41 HAS BEEN COMPLETED, REMOVE PORTABLE CONCRETE BARRIER USING ROADWAY STANDARD NO. 1101.02, SHEET 1 OF 7, AND FLAGGERS, FROM:

- STA. 40+45 EASTSIDE -L-REV- TO STA. 41+15 EASTSIDE -L-REV-, AND CONSTRUCT PROPOSED CURB & GUTTER AND ASPHALT UP TO, BUT NOT INCLUDING THE FINAL LAYER OF SURFACE COURSE FROM STA. 40+45 EASTSIDE -L-REV- TO STA. 41+15 EASTSIDE -L-REV- (PROPOSED CONSTRUCTION NORTHBOUND) (SEE DETAIL 1-J, TCP-7).

PHASE II

NOTE: PLACE INTERMEDIATE PAVEMENT OVERLAY/ WEDGING IN ACCORDANCE WITH GENERAL NOTES J AND K - (SEE SHEET TCP-2). THE CONTRACTOR SHALL COORDINATE BOTH NORTHBOUND AND SOUTHBOUND OVERLAY/ WEDGING OPERATION SO THAT THE DIFFERENCE IN ELEVATION BETWEEN OPEN LANES OF TRAFFIC DO NOT EXCEED 2 INCHES - PLACE TEMPORARY PAVEMENT MARKINGS (TAPE) AT THE END OF EACH DAYS OPERATION ALONG THE EXISTING ROAD CENTERLINE AS NECESSARY, OR AS DIRECTED BY THE ENGINEER.

STEP 1:
 USING ROADWAY STANDARD NO. 1101.02, SHEET 1 OF 7, AND FLAGGERS, PLACE PAVEMENT OVERLAY/ WEDGING UP TO, BUT NOT INCLUDING, FINAL LAYER OF SURFACE COURSE IN A CONTINUOUS MANNER FROM:

- STA. 10+20 -L- TO STA. 45+60 -L-REV- (SEE DETAILS 2-A, 2-B, 2-C, 2-D, AND 2D-A ON TCP-8 THROUGH TCP-9).
- STA. 10+10 -Y- TO STA. 12+10 -Y- (SEE DETAIL 2-DA ON TCP-9).

STEP 2:
 USING ROADWAY STANDARD NO. 1101.02, SHEET 1 OF 7, AND FLAGGERS, PLACE TEMPORARY PAVEMENT MARKINGS (PAINT) FROM:

- STA. 10+20 -L- TO STA. 45+60 -L-REV-, SEE DETAILS 3-A, 3-B, 3-C, 3-D, AND 3-DA ON PM-2 THROUGH PM-3),
- STA. 10+10 -Y- TO STA. 12+10 -Y-, SEE DETAILS 3-DA ON PM-3),

AND USING ROADWAY STANDARD NO 1101.03, SHEET 1 OF 9, AND INCIDENTAL STONE AS NEEDED (STA. 41+50 NORTHBOUND -L-REV- TO 45+70 NORTHBOUND -L-REV-), SHIFT EXISTING TRAFFIC ONTO NEWLY CONSTRUCTED 16' ROADWAY FROM:

- STA. 10+20 -L- TO 45+60 -L-REV-. (SEE DETAILS 2-E, 2-F, 2-G, 2-H, AND 2-HA ON TCP-10 THROUGH TCP-11).
- STA. 10+10 -Y- TO STA. 12+10 -Y-, SEE DETAILS 2-HA ON TCP-11).

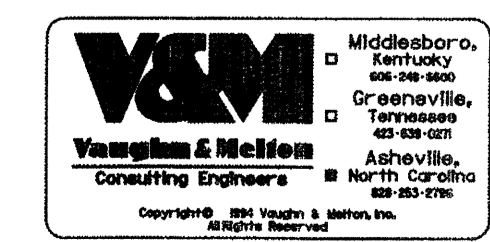
NOTE: AS CONSTRUCTION PROGRESSES, REMOVE SOLID CATCH BASIN COVERS AS INSTALLED IN PHASE I STEP 2, ADJUST CATCH BASINS TO PROPOSED ELEVATION AND INSTALL CATCH BASIN FRAME, GRATE, AND HOODS PER ROADWAY PLANS DURING PHASE II, STEP 3 OF CONSTRUCTION.

STEP 3:
 USING ROADWAY STANDARD NO 1101.02, SHEET 1 OF 7, AND FLAGGERS, CONSTRUCT PROPOSED CURB & GUTTER, ASPHALT, AND DRAINAGE AND PLACE REMAINDER OF PAVEMENT OVERLAY/WEDGING UP TO, BUT NOT INCLUDING THE FINAL LAYER OF SURFACE COURSE FROM:

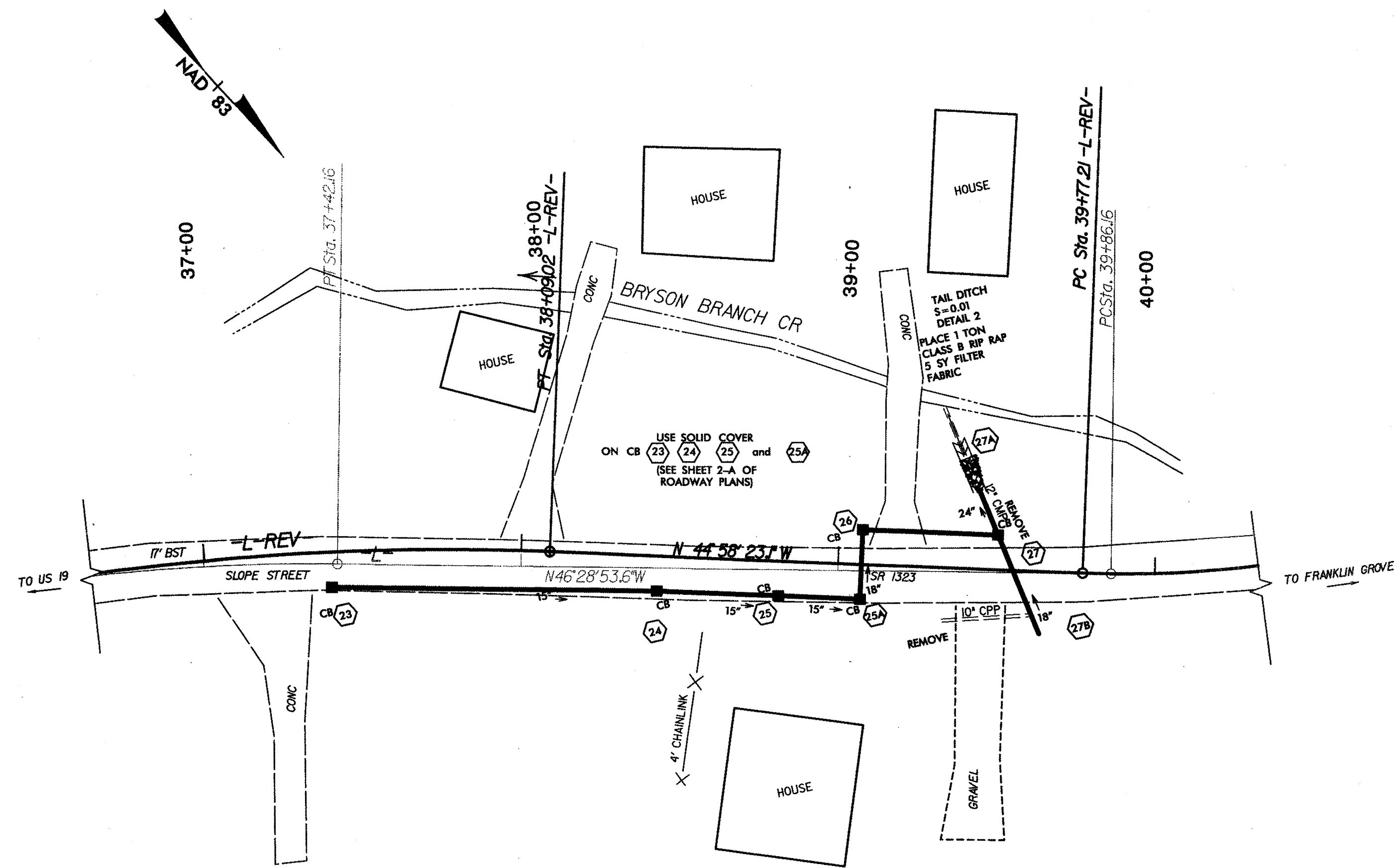
- STA.10+20 WESTSIDE -L- TO STA. 36+06.28 WESTSIDE -L-REV- (PROPOSED CONSTRUCTION AND OVERLAY/WEDGING SOUTHBOUND). (SEE DETAILS 2-E, 2-F, 2-G AND 2-H ON TCP-10 THROUGH TCP-11).
- STA.36+06.28 EASTSIDE -L- TO STA. 39+86.16 EASTSIDE -L-REV- (PROPOSED CONSTRUCTION AND OVERLAY/WEDGING SOUTHBOUND). (SEE DETAILS 2-H AND 2-HA ON TCP-11).
- STA.39+86.16 WESTSIDE -L- TO STA. 45+70 WESTSIDE -L-REV- (PROPOSED CONSTRUCTION AND OVERLAY/WEDGING SOUTHBOUND). (SEE DETAIL 2-HA ON TCP-11).
- STA. 10+10 -Y- TO STA. 12+10 -Y-, SEE DETAILS 2-HA ON TCP-11,

PHASE III

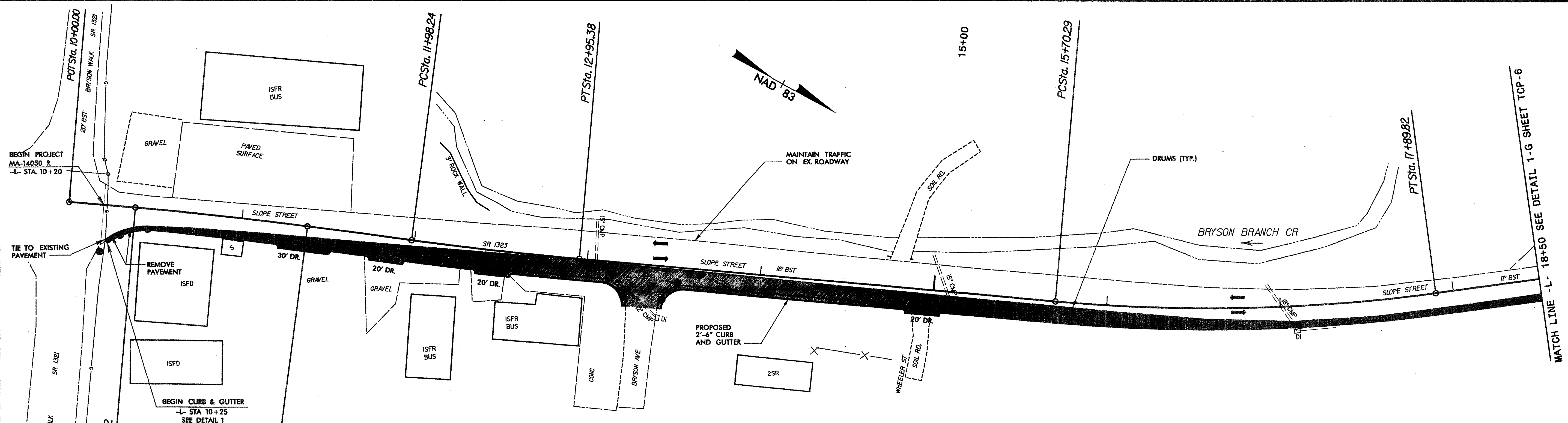
STEP 1
 USING ROADWAY STANDARD NO. 1101.02, SHEET 1 OF 7, AND FLAGGERS, PLACE THE FINAL LAYER OF SURFACE COURSE, THE FINAL PAVEMENT MARKINGS (PAINT).



APPROVED: DATE: 2-24-10	<h1 style="margin: 0;">PHASING</h1>	<table border="1" style="width: 100%; border-collapse: collapse;"> <tr> <th colspan="2">REVISIONS</th> </tr> <tr> <td style="width: 50%;"> </td> <td style="width: 50%;"> </td> </tr> <tr> <td> </td> <td> </td> </tr> <tr> <td> </td> <td> </td> </tr> </table>	REVISIONS							
REVISIONS										
	<table border="1" style="width: 100%; border-collapse: collapse;"> <tr> <td>SCALE: NONE</td> </tr> <tr> <td>DATE: FEB. 08</td> </tr> <tr> <td>DWG. BY: JRB</td> </tr> <tr> <td>DESIGN BY: ACC</td> </tr> <tr> <td>REVIEWED BY: LDB</td> </tr> </table>	SCALE: NONE	DATE: FEB. 08	DWG. BY: JRB	DESIGN BY: ACC	REVIEWED BY: LDB	<table border="1" style="width: 100%; border-collapse: collapse;"> <tr> <td style="width: 50%;">CADD FILE</td> <td style="width: 50%;">slope03tcp.dgn</td> </tr> </table>	CADD FILE	slope03tcp.dgn	
SCALE: NONE										
DATE: FEB. 08										
DWG. BY: JRB										
DESIGN BY: ACC										
REVIEWED BY: LDB										
CADD FILE	slope03tcp.dgn									



DETAIL 1-E



DETAIL 1-F

LEGEND

	WEDGING / OVERLAY
	PROP. CONSTRUCTION
	SCARIFY AND REMOVE

APPROVED: DATE: 2/2/02

SEAL

Professional Engineer
LLOYD D. BROWN
20119

DETAILS "1-E" & "1-F"

SCALE: 1" = 30'

DATE: FEB. 08

DWG. BY: JRB

DESIGN BY: ACC

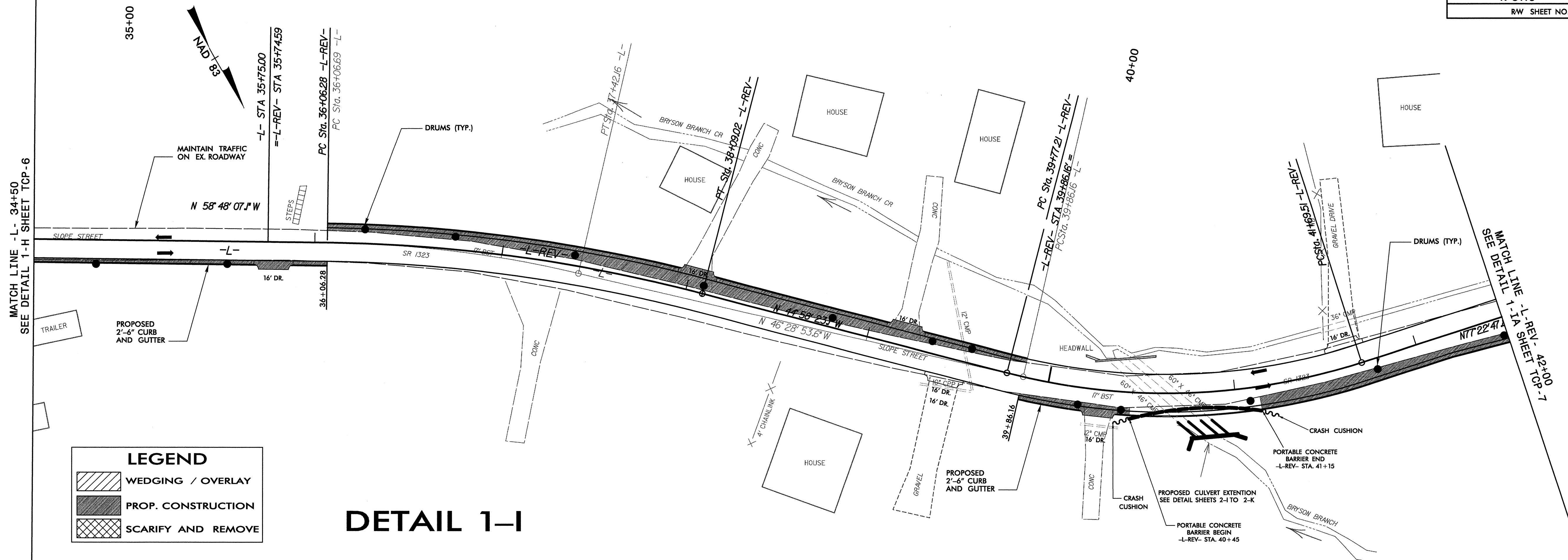
REVIEWED BY: LDB

REVISIONS	

CADD FILE: slope05tcp.dgn

V&M
Vaughan & Melton
Consulting Engineers

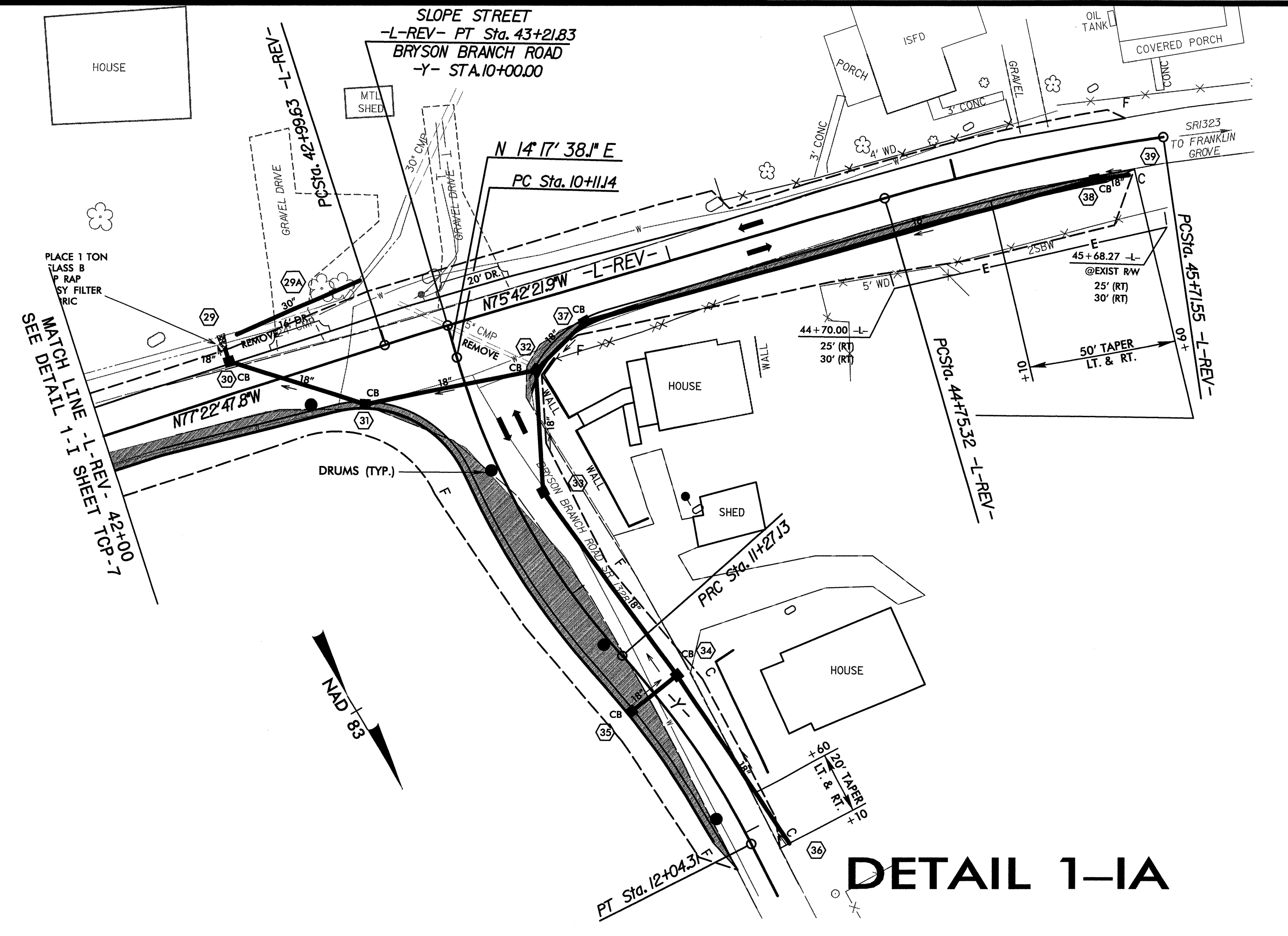
Middlesboro, Kentucky 40288-0500
Greeneville, Tennessee 37630-0215
Asheville, North Carolina 28805-2798



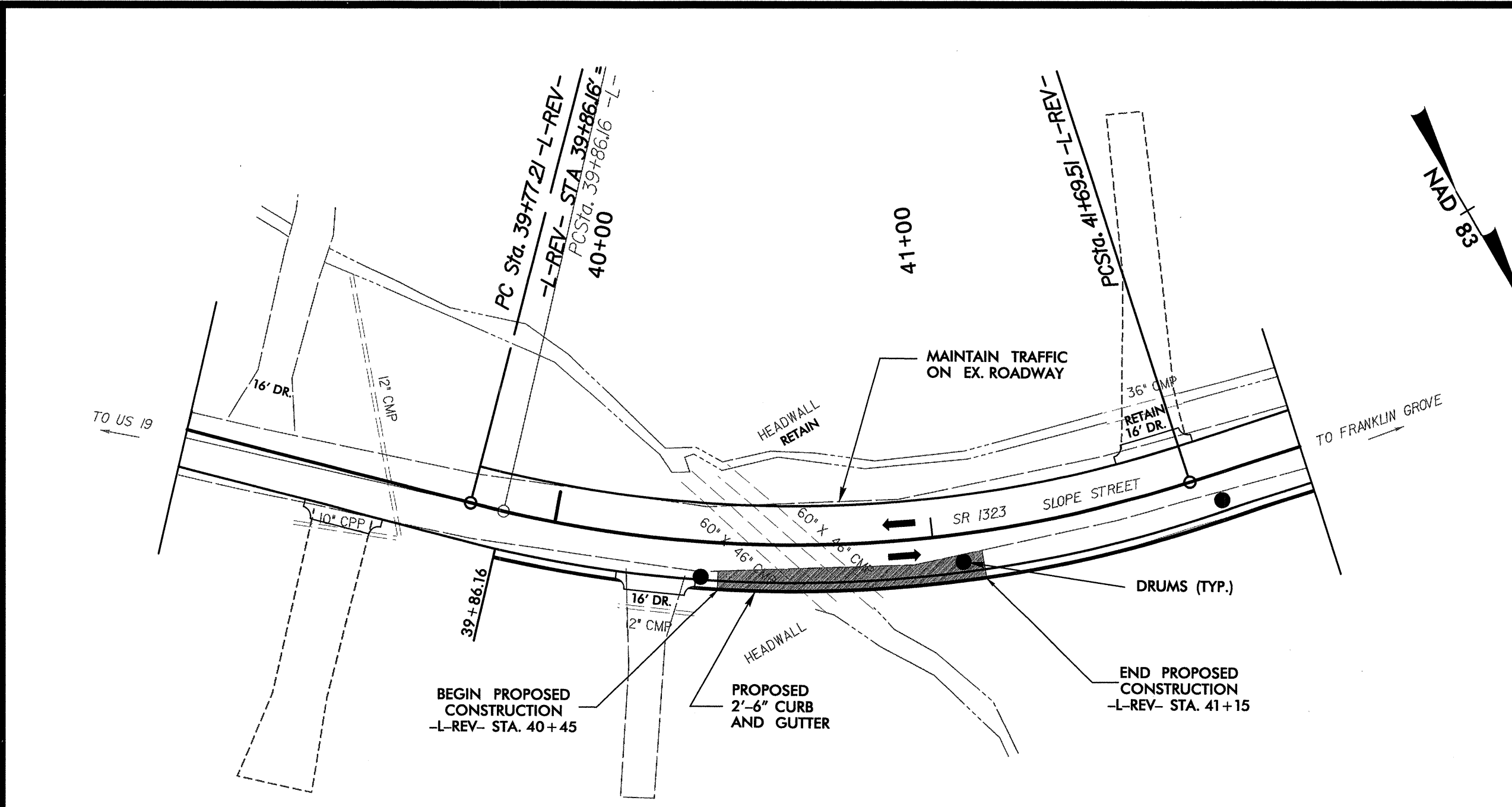
LEGEND

- WEDGING / OVERLAY
- PROP. CONSTRUCTION
- SCARIFY AND REMOVE

DETAIL 1-I



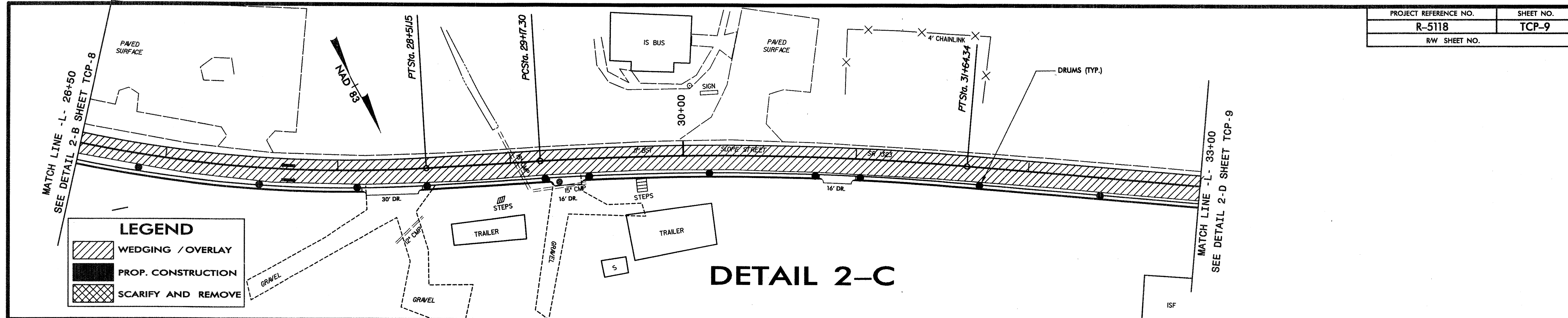
DETAIL 1-IA



DETAIL 1-J

APPROVED:	DATE: 11-23-16	DETAILS "1-I" & "1-J"							
SCALE: 1" = 30'	DATE: FEB. 08	<table border="1"> <tr> <th colspan="2">REVISIONS</th> </tr> <tr> <td> </td> <td> </td> </tr> <tr> <td> </td> <td> </td> </tr> </table>		REVISIONS					
REVISIONS									
DWG. BY: JRB	DESIGN BY: ACC	<table border="1"> <tr> <td>CADD FILE</td> <td>slope07tcp.dgn</td> </tr> </table>		CADD FILE	slope07tcp.dgn				
CADD FILE	slope07tcp.dgn								
REVIEWED BY: LDB									

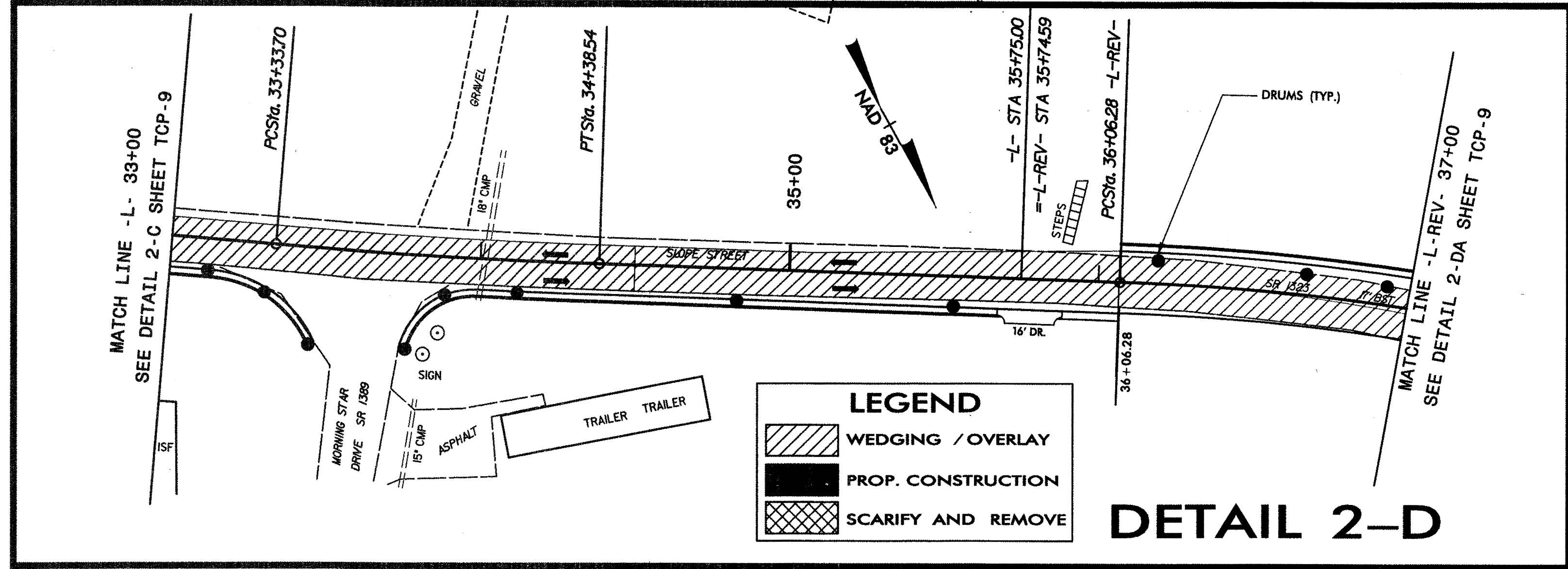
V&M
Vanagon & McIlroy
 Consulting Engineers
 Middlesboro, Kentucky 40288-1600
 Greenville, Tennessee 423-483-0011
 Asheville, North Carolina 828-253-2796
 Copyright © 2004 Vanagon & McIlroy, Inc. All Rights Reserved.



LEGEND

- WEDGING / OVERLAY
- PROP. CONSTRUCTION
- SCARIFY AND REMOVE

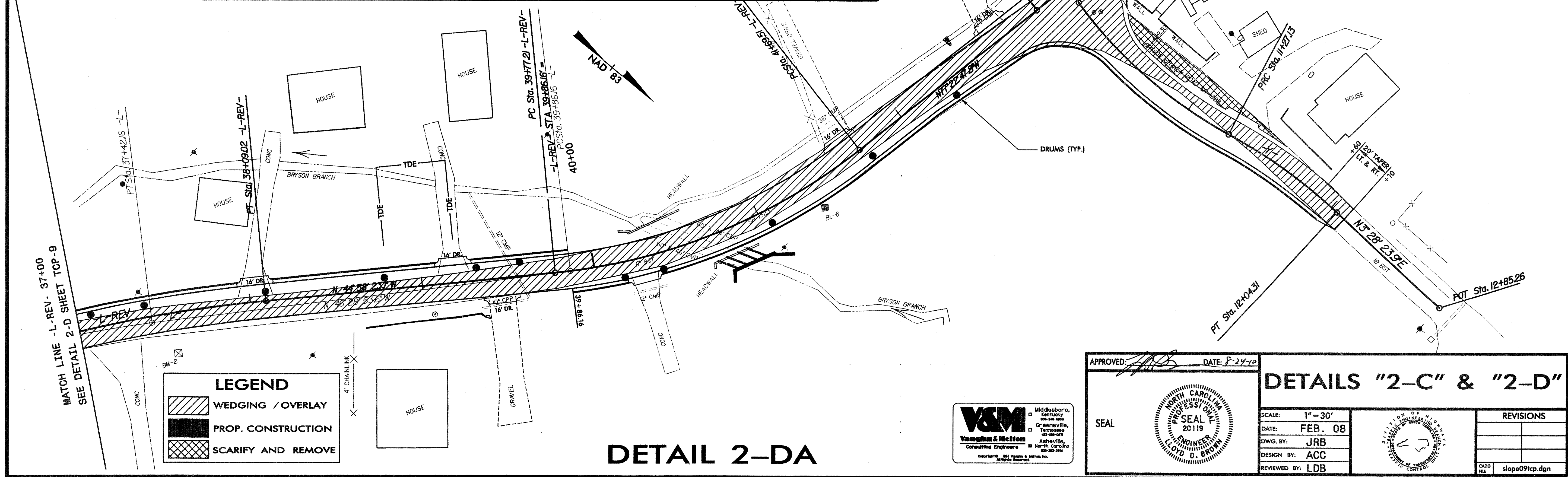
DETAIL 2-C



LEGEND

- WEDGING / OVERLAY
- PROP. CONSTRUCTION
- SCARIFY AND REMOVE

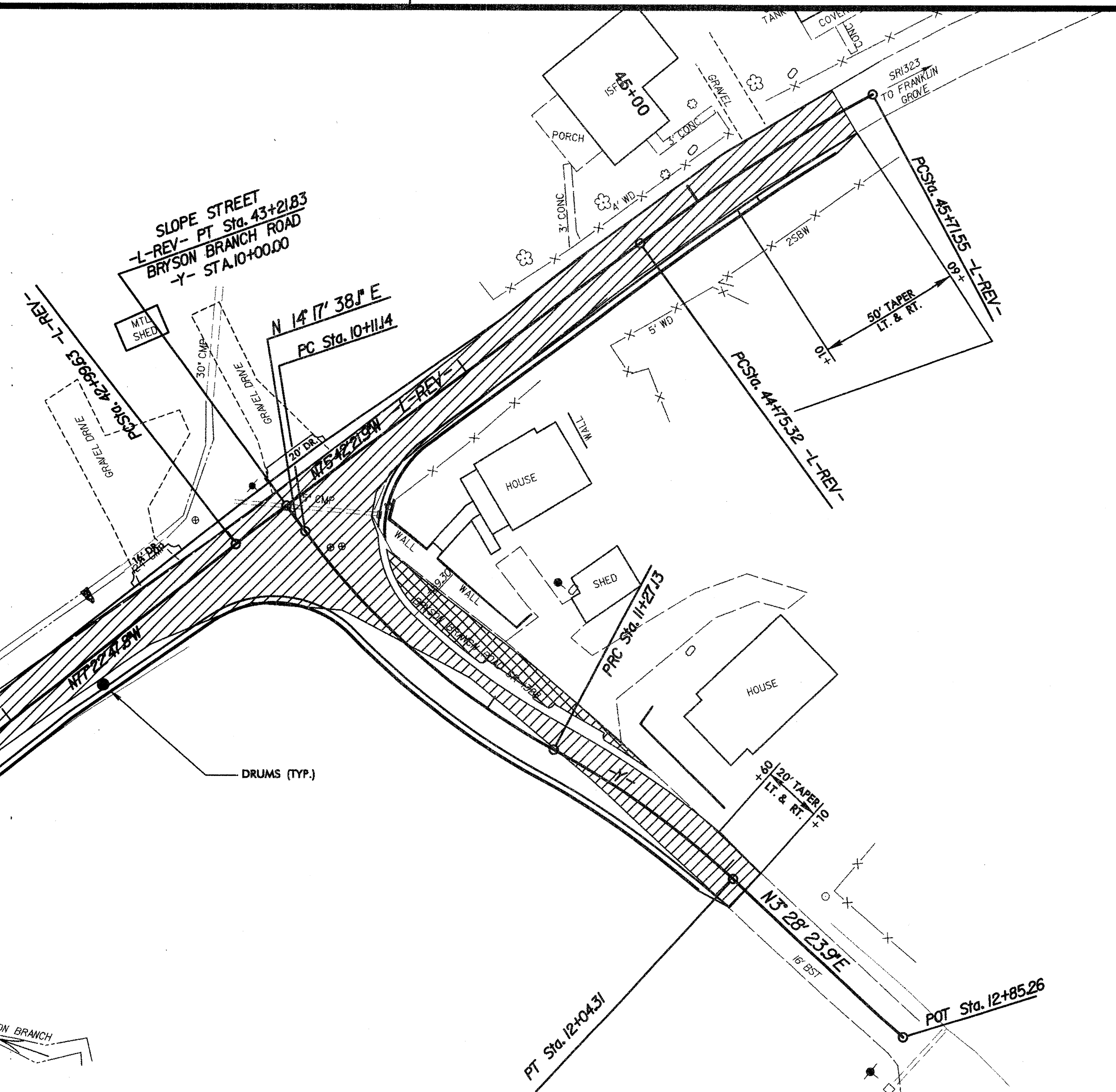
DETAIL 2-D



LEGEND

- WEDGING / OVERLAY
- PROP. CONSTRUCTION
- SCARIFY AND REMOVE

DETAIL 2-DA



APPROVED: *[Signature]* DATE: 2-24-12

DETAILS "2-C" & "2-D"

SCALE: 1" = 30'

DATE: FEB. 08

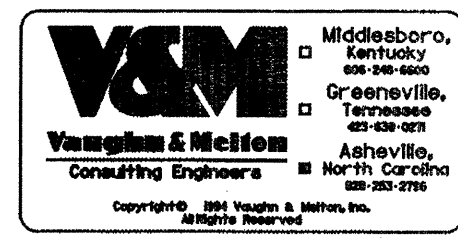
DWG. BY: JRB

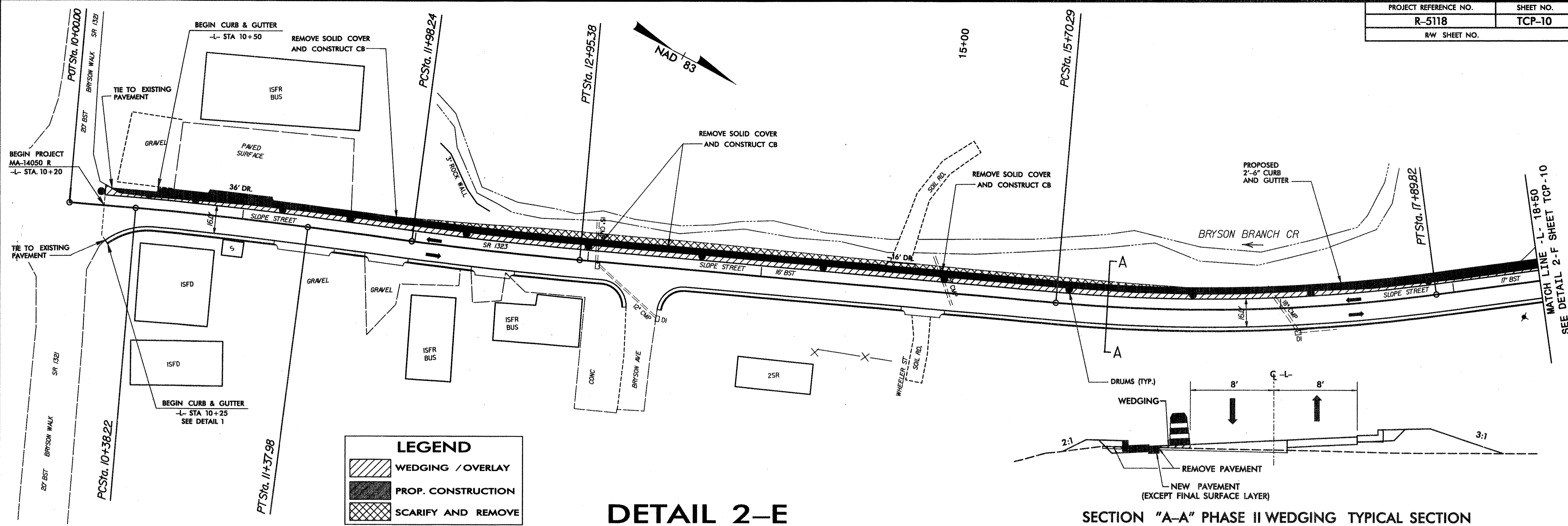
DESIGN BY: ACC

REVIEWED BY: LDB

REVISIONS

CADD FILE: slope09tcp.dgn

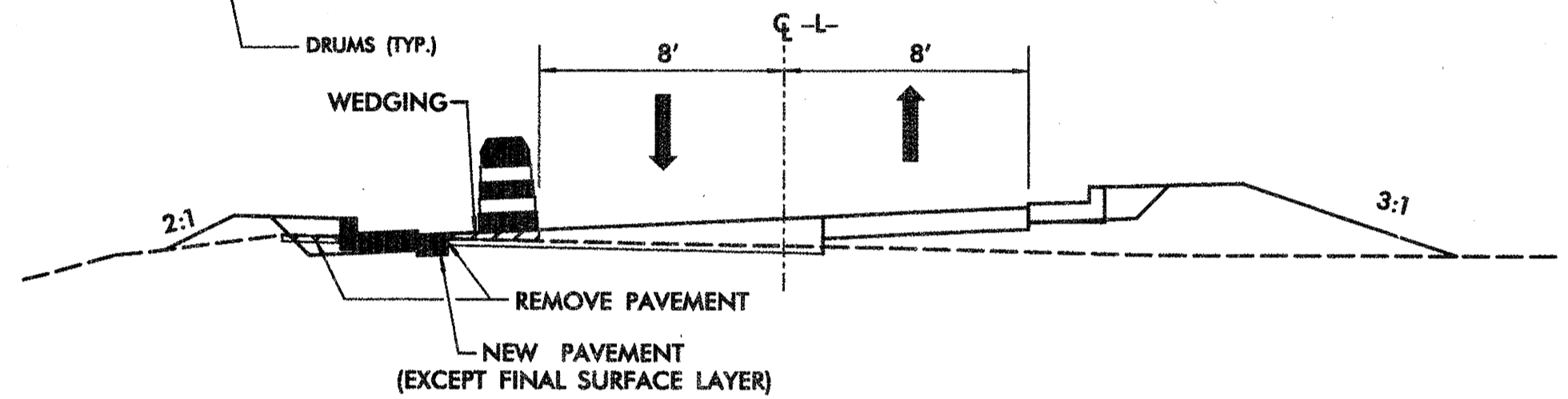




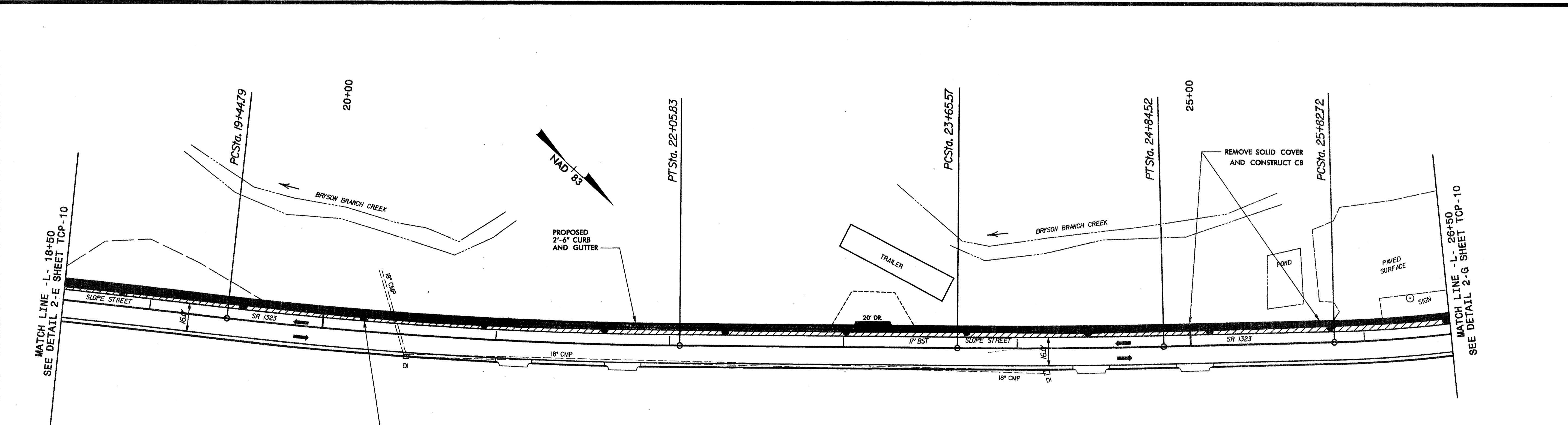
LEGEND

	WEDGING / OVERLAY
	PROP. CONSTRUCTION
	SCARIFY AND REMOVE

DETAIL 2-E



SECTION "A-A" PHASE II WEDGING TYPICAL SECTION @ STATION 16+00



LEGEND

	WEDGING / OVERLAY
	PROP. CONSTRUCTION
	SCARIFY AND REMOVE

DETAIL 2-F

APPROVED:	DATE: 2-24-10	DETAILS "2-E" & "2-F"	
SEAL			
SCALE: 1" = 30'		REVISIONS	
DATE: FEB. 08			
DWG. BY: JRB			
DESIGN BY: ACC			
REVIEWED BY: LDB			CADD FILE: slope10tcp.dgn

