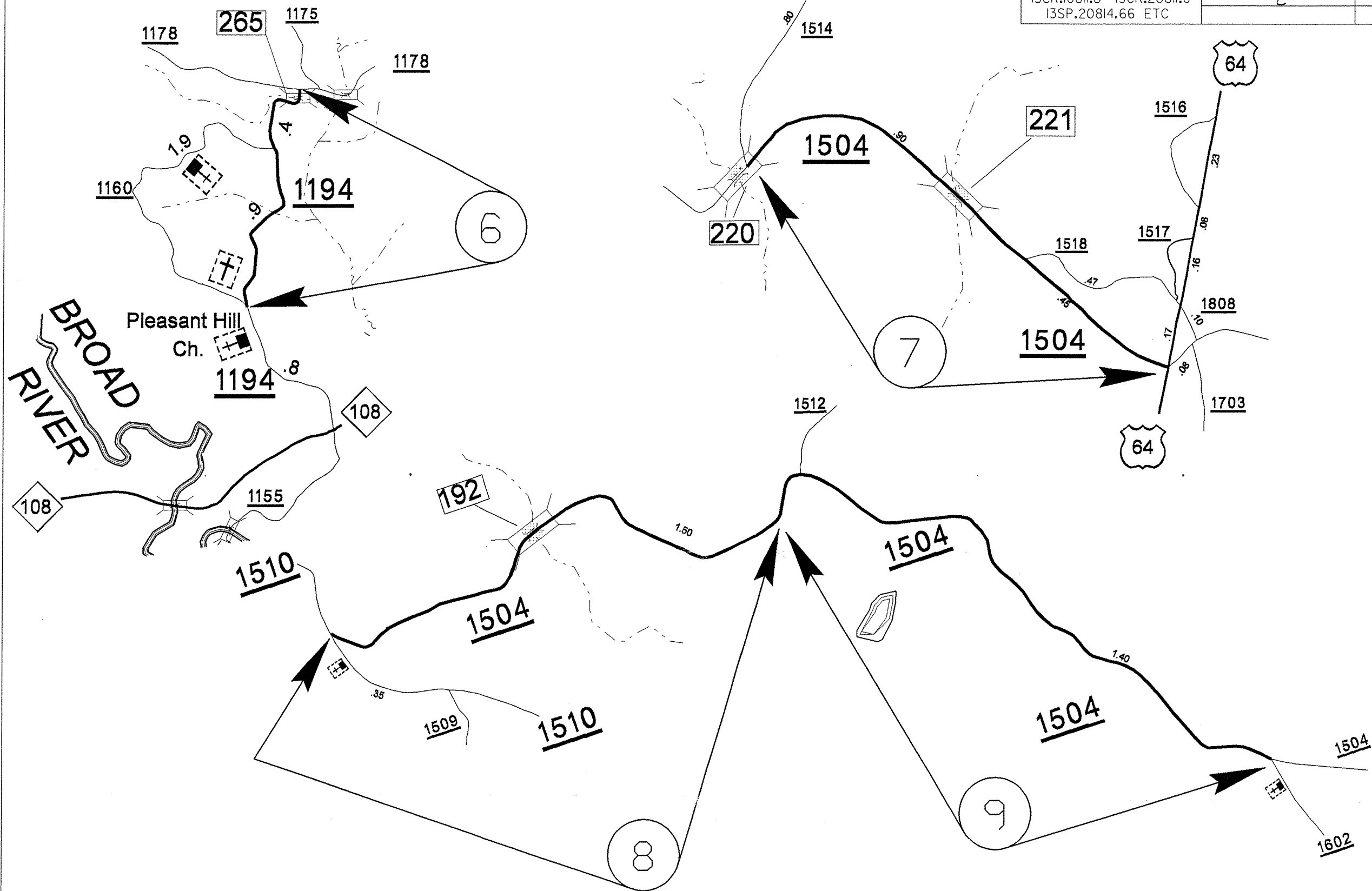
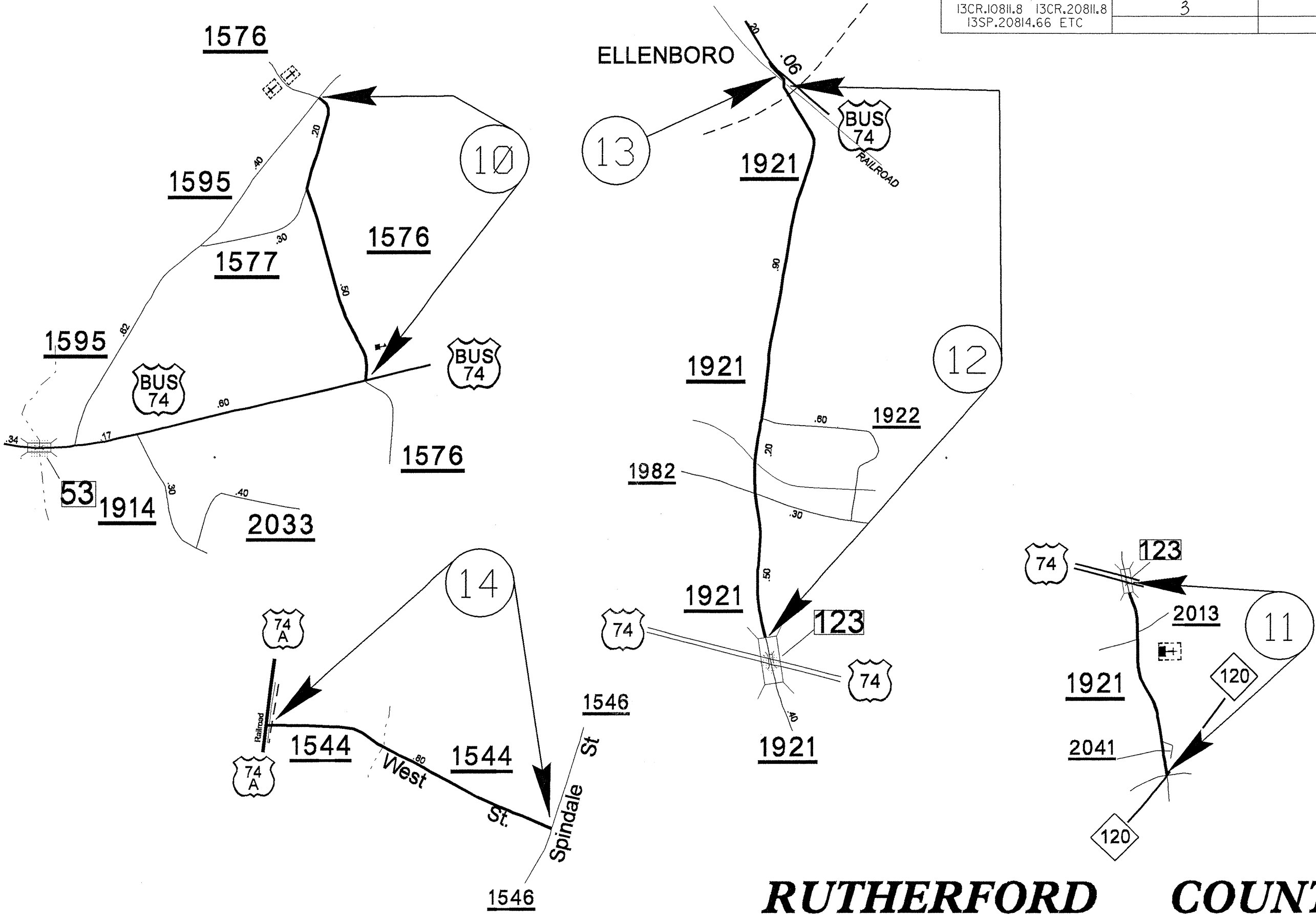


PROJECT NO.	SHEET NO.	TOTAL SHEETS
13CR.10811.8 13CR.20811.8 13SP.20814.66 ETC	2	



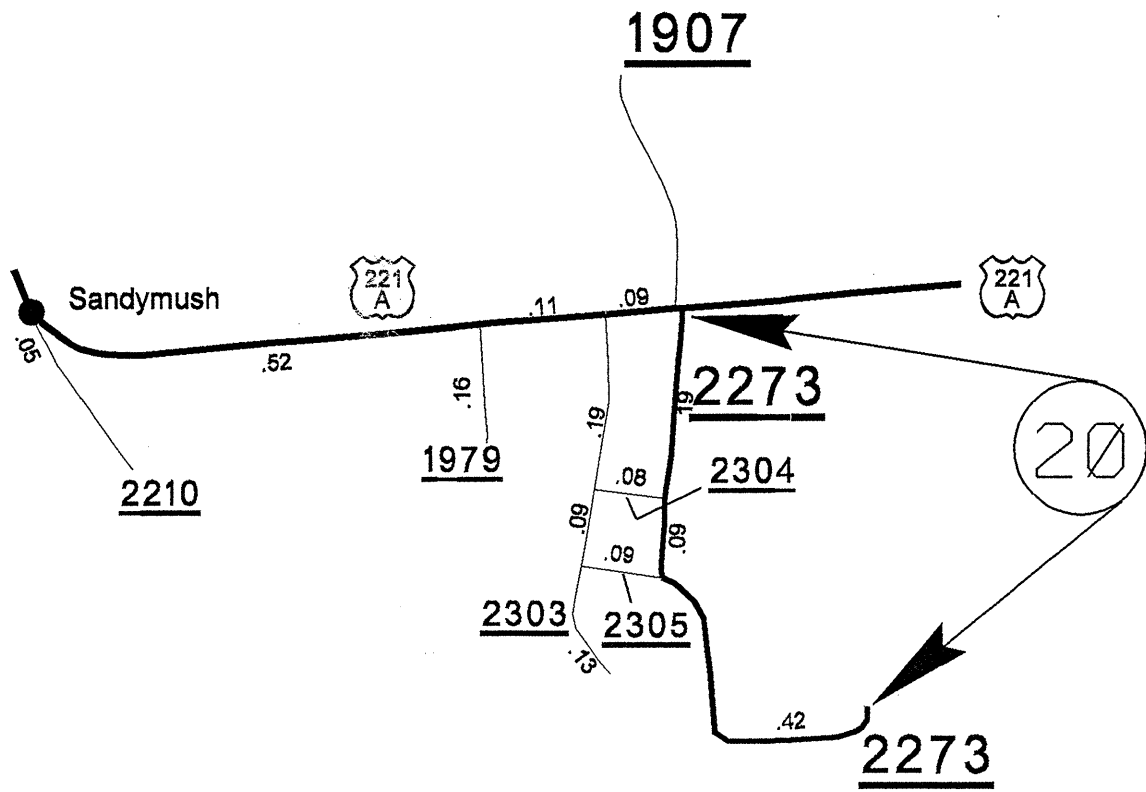
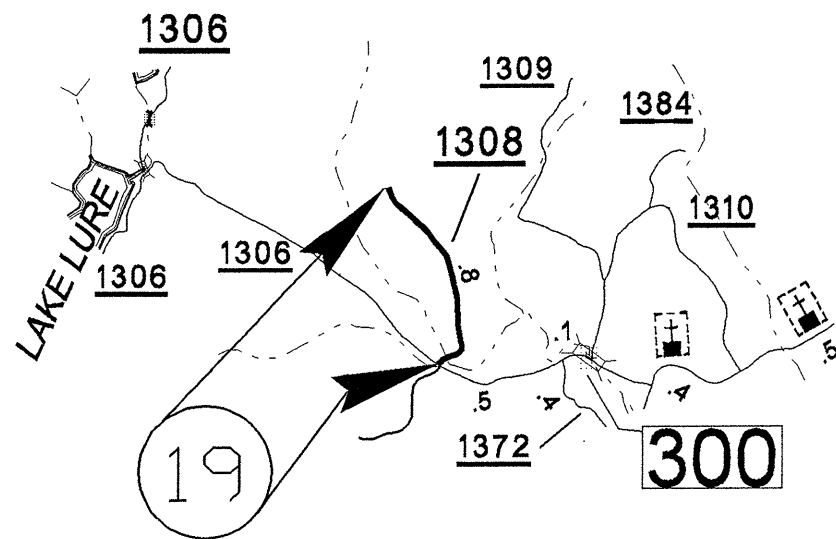
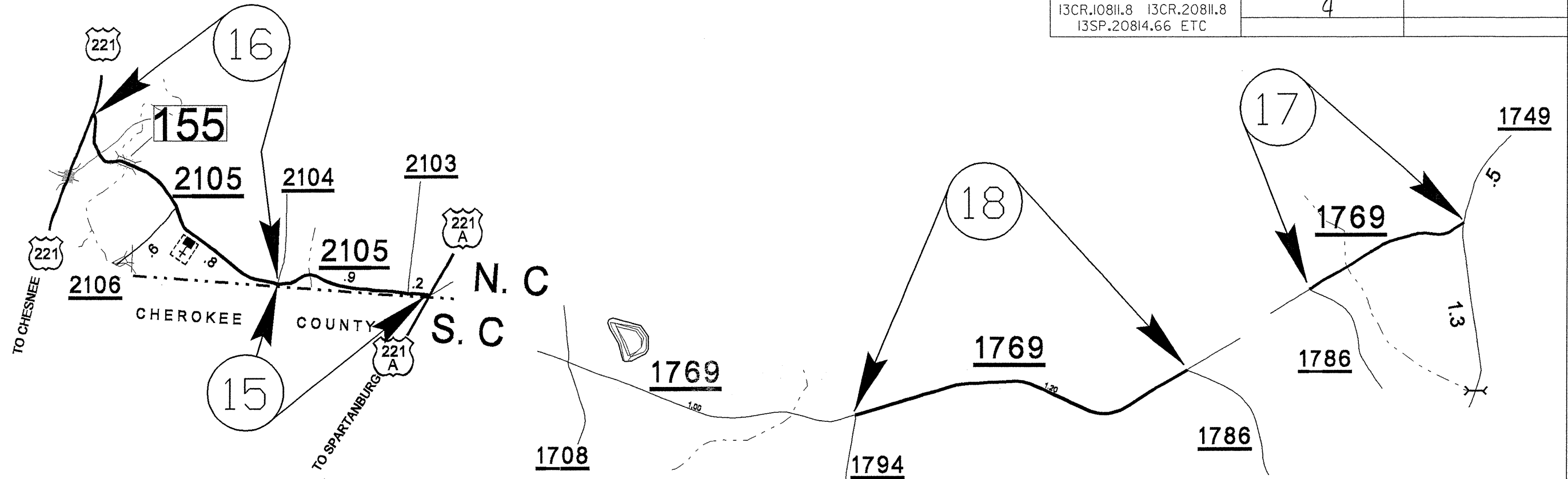
RUTHERFORD COUNTY

PROJECT NO.	SHEET NO.	TOTAL SHEETS
13CR.10811.8 13CR.20811.8 13SP.20814.66 ETC	3	



RUTHERFORD COUNTY

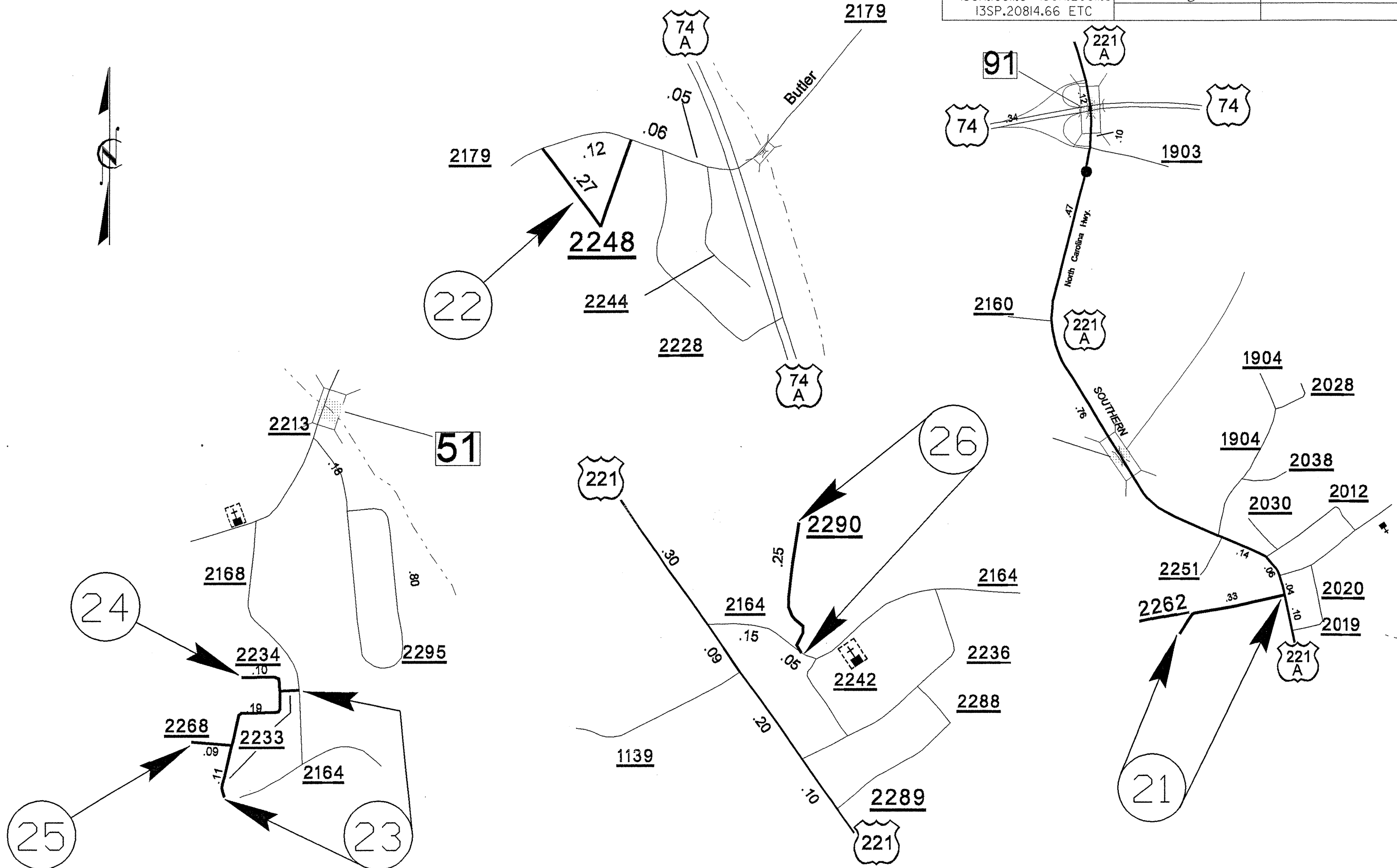
PROJECT NO.	SHEET NO.	TOTAL SHEETS
13CR.10811.8 13CR.20811.8 13SP.20814.66 ETC	4	



RUTHERFORD COUNTY

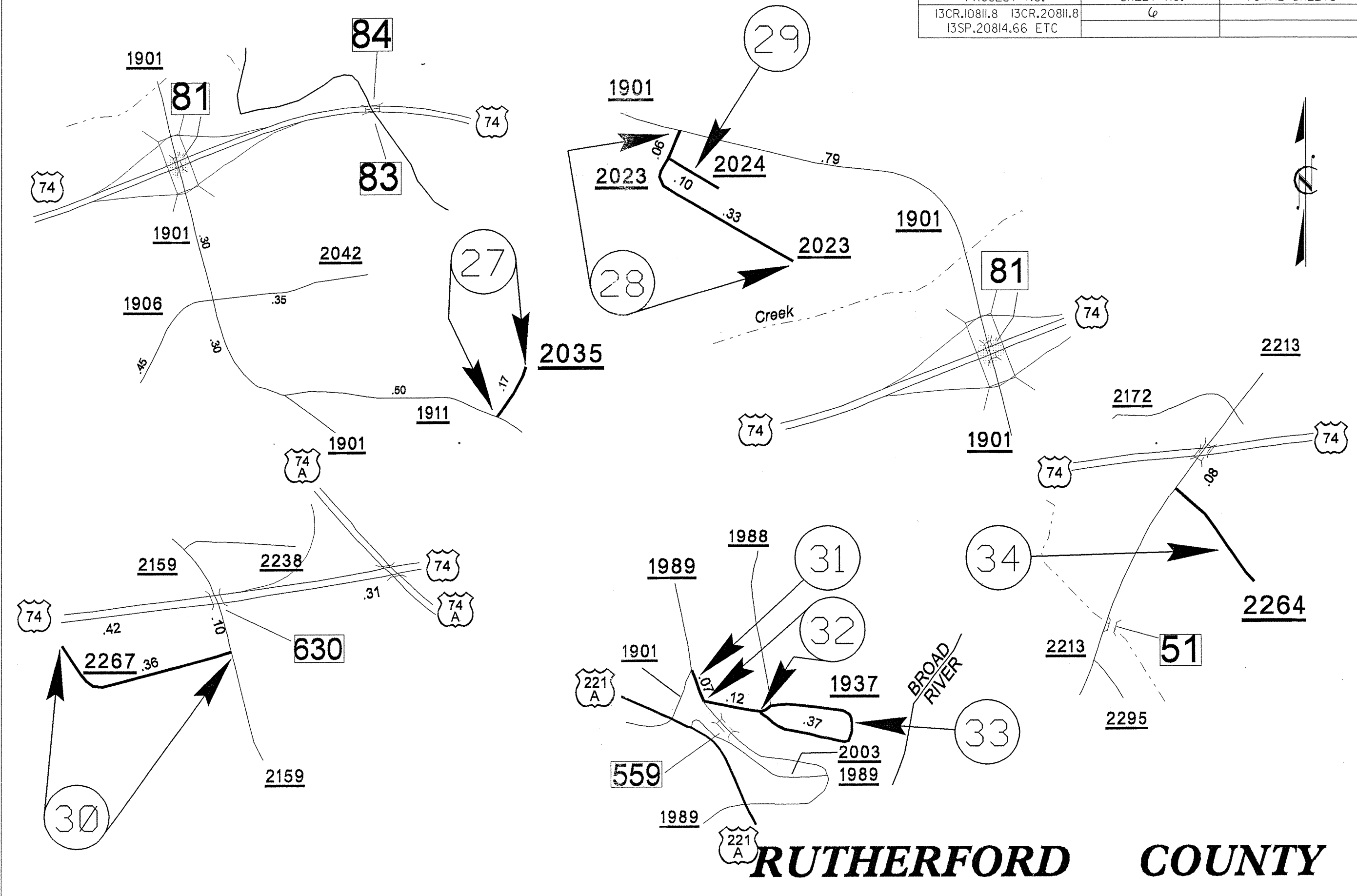


PROJECT NO.	SHEET NO.	TOTAL SHEETS
13CR.10811.8 13CR.20811.8 13SP.20814.66 ETC	5	



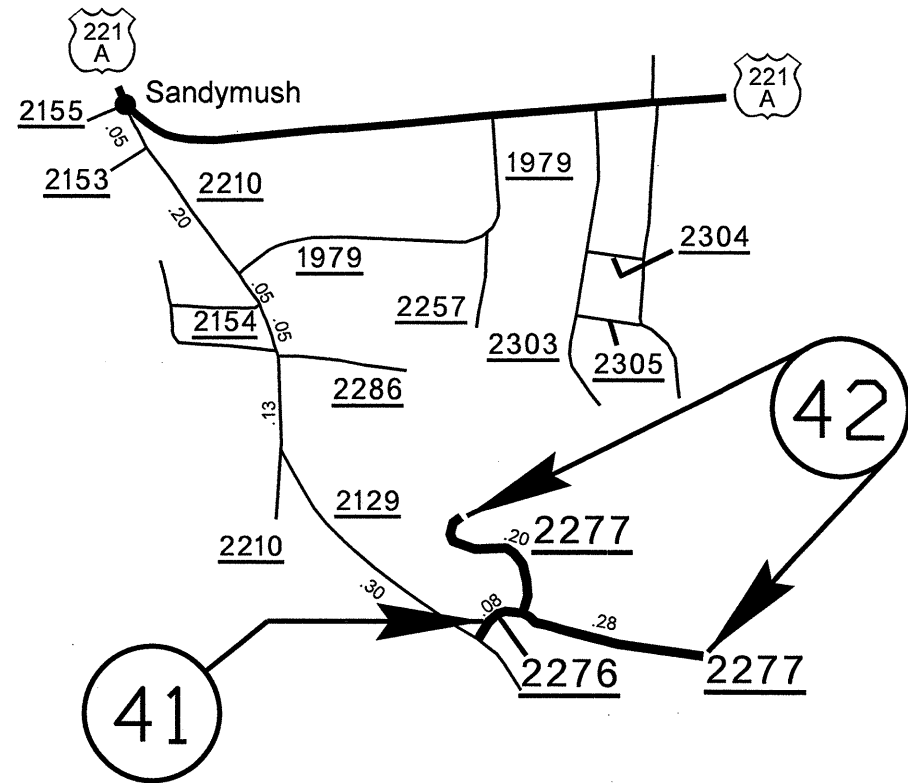
RUTHERFORD COUNTY

PROJECT NO.	SHEET NO.	TOTAL SHEETS
13CR.10811.8 13CR.20811.8 13SP.20814.66 ETC	6	



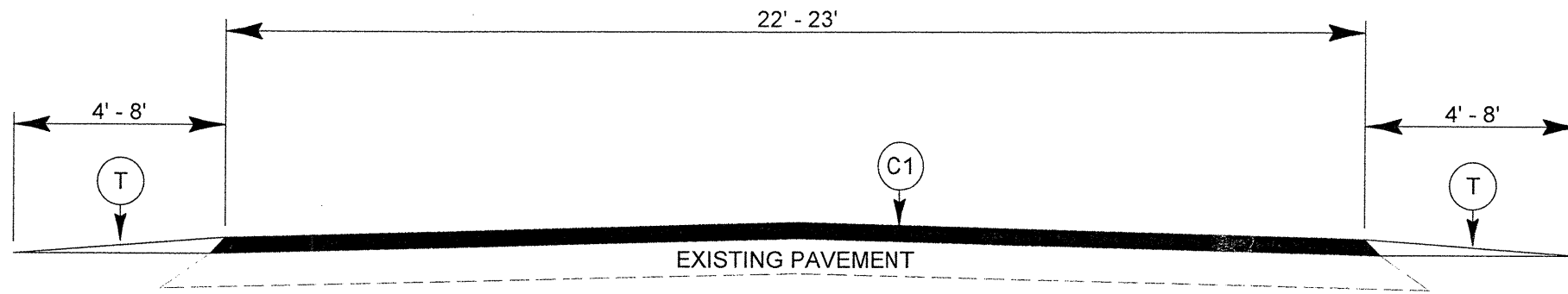
RUTHERFORD COUNTY

PROJECT NO.	SHEET NO.	TOTAL SHEETS
13CR.10811.8 13SP.20814.66 ETC	8	

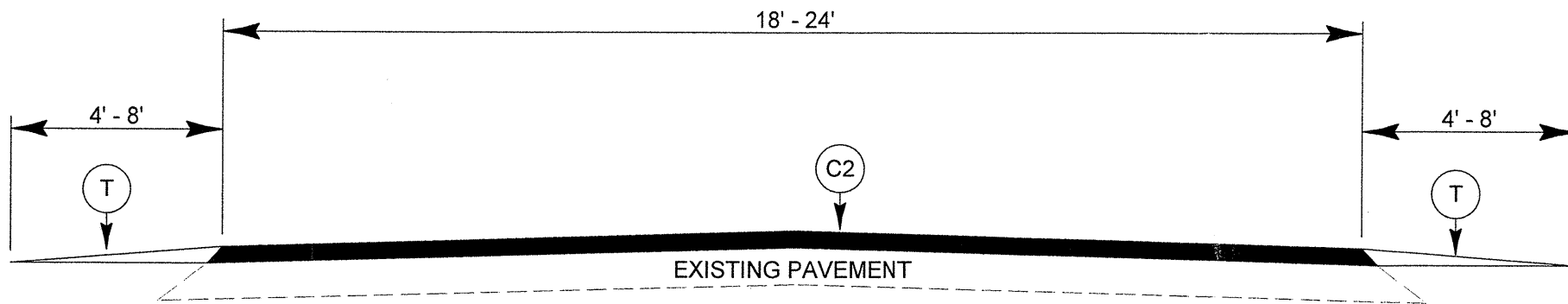


RUTHERFORD COUNTY

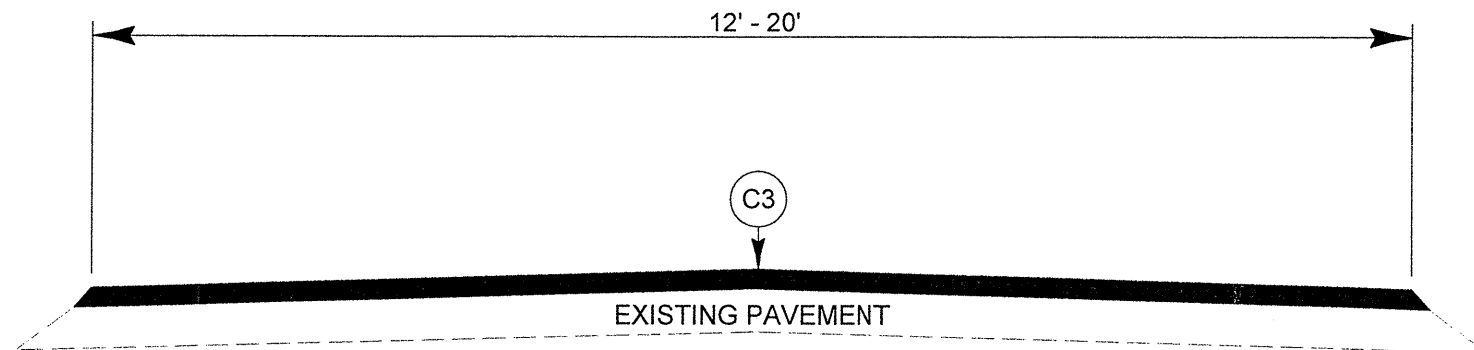
PROJECT NO. 13CR.10811.8, 13CR.20811.8, 13SP.20814.66, ETC.	SHEET NO. 9	TOTAL SHEETS
---	----------------	--------------



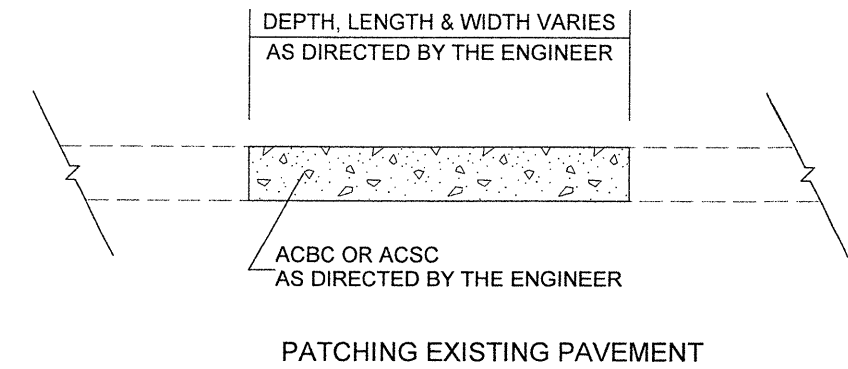
TYPICAL SECTION NO. 1



TYPICAL SECTION NO. 2

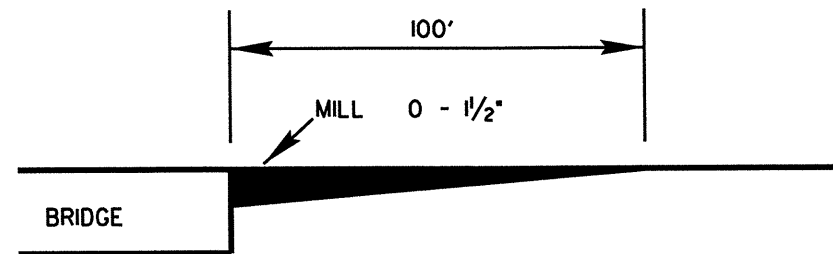


TYPICAL SECTION NO. 3

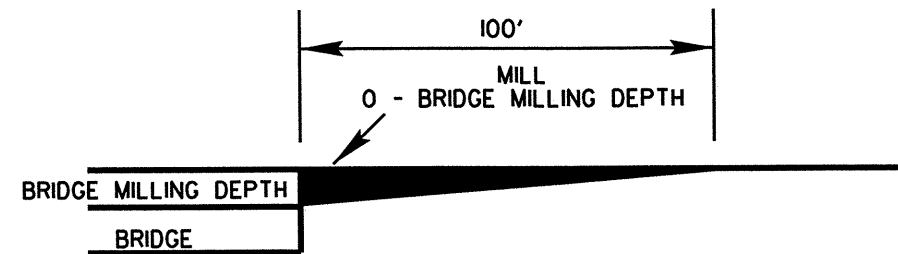


PAVEMENT SCHEDULE	
C1	PROP. APPROX. 1 1/2" ASPHALT CONCRETE SURFACE COURSE, TYPE S9.5B, AT AN AVERAGE RATE OF 168 LBS. PER SQ. YD.
C2	PROP. APPROX. 1 1/2" ASPHALT CONCRETE SURFACE COURSE, TYPE SF9.5A, AT AN AVERAGE RATE OF 165 LBS. PER SQ. YD.
C3	PROP. APPROX. 1" ASPHALT CONCRETE SURFACE COURSE, TYPE SF9.5A, AT AN AVERAGE RATE OF 110 LBS. PER SQ. YD.
T	SHOULDER RECONSTRUCTION

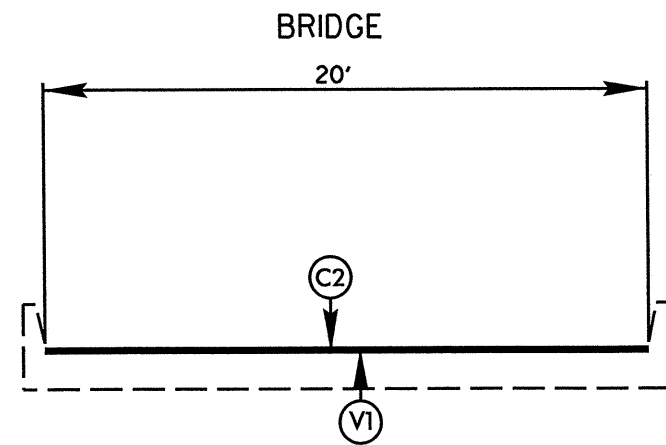
PROJECT NO.	SHEET NO.	TOTAL SHEETS
13CR.10811.8, 13CR.20811.8 & 13SP.20814.66 ETC.	10	



MILLING DETAIL AT BRIDGE APPROACHES
WHERE BRIDGE WILL NOT BE RESURFACED
COST OF MILLING IS INCIDENTAL TO OTHER ITEMS



MILLING DETAIL AT BRIDGE APPROACHES
WHERE BRIDGES WILL BE MILLED THEN RESURFACED
COST OF MILLING IS INCIDENTAL TO OTHER ITEMS

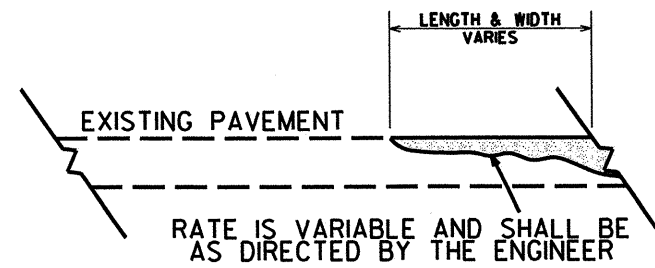
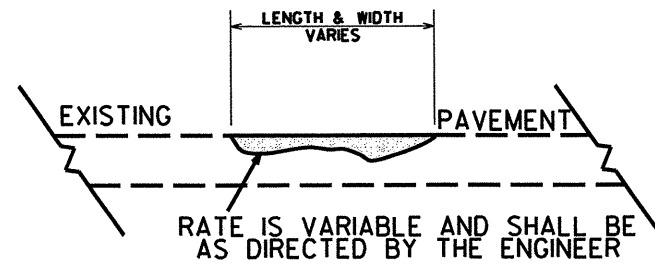


BRIDGE DETAIL

BRIDGE NUMBER 155 MAP 16
MILL 1 1/2" OFF EXISTING PAVEMENT ON BRIDGE
THEN RESURFACE BRIDGE DECK WITH 1 1/2" OF SF9.5A
SEE MAPS FOR BRIDGE LOCATION

PAVEMENT SCHEDULE	
C2	PROP. APPROX. 1 1/2" ASPHALT CONCRETE SURFACE COURSE, TYPE SF9.5A, AT AN AVERAGE RATE OF 165 LBS. PER SQ. YD.
V1	MILL ASPHALT PAVEMENT 1 1/2" DEPTH

PROJECT NO.	SHEET NO.	TOTAL SHEETS
13CR.10811.8, 13CR.20811.8 & 13SP.20814.66 ETC.	11	



DETAIL SHOWING METHOD OF WEDGING

PROJECT NO.	SHEET NO.	TOTAL NO.
13CR.10811.8, 13CR.20811.8 13SP.20814.66, ETC.		

SUMMARY OF QUANTITIES

PROJECT NO	COUNTY	MAP NO	ROUTE	DESCRIPTION	TYP NO	FINAL SURFACE TESTING REQUIRED	LENGTH MI	WIDTH FT	INCIDENTAL STONE BASE TONS	SHOULDER RECONSTRUCTION SMI	1½" MILLING SY	ASPHALT CONC SURFACE COURSE, TYPE S9.5B TONS	ASPHALT CONC SURFACE COURSE, TYPE SF9.5A TON	ASPHALT BINDER, GRADE PG 64-22 TONS	PATCHING EXISTING PAVEMENT TONS	ADJUSTMENT OF MANHOLES EA	ADJUSTMENT OF METER BOXES OR VALVE BOXES EA
13CR.10811.8	Rutherford	1	US 221 A	SC STATE LINE TO SR 2100	1	NO	1.25	23	62.50	2.50		1,567		94	720		
		2	US 221 A	SR 2100 TO SR 1002	1	NO	1.15	23	57.50	2.30		1,442		86	545		
		3	US 221	FROM SR 1191 NORTH FOR 0.35 MILES	1	NO	0.35	22	17.50	0.70		420		25	290		
		4	US 221	SR 2194 TO SR 1191	1	NO	1.52	22	76.00	3.04		1,823		109	1,130		
		5	US 221	FROM T.I.P. PROJECT TO SR 2194	1	NO	0.8	22	40.00	1.60		959		58	488		
TOTAL FOR PROJ NO. 13CR.10811.8							5.07		253.50	10.14		6,211		372	3,173		
13CR.20811.8	Rutherford	6	SR 1194	SR 1160 TO SR 1178	2	NO	1.5	18	75.00	3.00			1,447	94	1,277		
		7	SR 1504	SR 1514 TO US 64	2	NO	1.35	18	67.50	2.70			1,303	85	745		
		8	SR 1504	SR 1510 TO PVT. CHANGE	2	NO	1.23	22	61.50	2.46			1,449	94	135		
		9	SR 1504	PVT. CHANGE TO SR 1602	2	NO	1.79	20	89.50	3.58			1,918	125	588		
		10	SR 1576	SR 1595 TO US 74 BUS.	2	NO	0.8	20	40.00	1.60			857	56	305		
		11	SR 1921	NC 120 TO BRIDGE	2	NO	1.51	20	75.50	3.02			1,618	105	365		3
		12	SR 1921	BRIDGE TO SCL ELLENBORO	2	NO	1.59	20	79.50	3.18			1,704	111	365		
		13	SR 1921	SCL ELLENBORO TO US 74 BUS.	2	NO	0.06	24	3.00	0.12			77	5			
		14	SR 1544	SR 1546 TO US 74 ALT	2	NO	0.83	18	41.50	1.66			801	52	100	10	1
		15	SR 2105	US 221 A TO SR 2104	2	NO	1.1	18	55.00	2.20			1,061	69	327		
		16	SR 2105	SR 2104 TO US 221	2	NO	1.89	18	94.50	3.78	201.00		1,824	119	657		
		17	SR 1769	SR 1749 TO SR 1786	2	NO	0.87	18	43.50	1.74			840	55	502		
		18	SR 1769	SR 1786 TO SR 1794	2	NO	1.17	18	58.50	2.34			1,129	73	646		
TOTAL FOR PROJ NO. 13CR.20811.8							15.69		784.50	31.38	201.00		16,027	1,043	6,012	10	4
13SP.20814.66	Rutherford	19	SR 1308	SR 1306 TO E.O.M.	3	NO	0.85	20					606	39		1	5
TOTAL FOR PROJ NO. 13SP.20814.66							0.85						606	39		1	5
13SP.20814.67	Rutherford	20	SR 2273	US 221A TO D.E.	3	NO	0.68	20					529	34			
TOTAL FOR PROJ NO. 13SP.20814.67							0.68						529	34			
13SP.20814.68	Rutherford	21	SR 2262	US 221A TO D.E.	3	NO	0.32	18					205	13			
TOTAL FOR PROJ NO. 13SP.20814.68							0.32						205	13			
13SP.20814.69	Rutherford	22	SR 2248	SR 2179 TO SR 2179	3	NO	0.27	18					173	11			
TOTAL FOR PROJ NO. 13SP.20814.69							0.27						173	11			
13SP.20814.70	Rutherford	23	SR 2233	SR 2164 TO SR 2168	3	NO	0.36	20					257	17			2
TOTAL FOR PROJ NO. 13SP.20814.70							0.36						257	17			2
13SP.20814.71	Rutherford	24	SR 2234	SR 2233 TO E.O.M.	3	NO	0.11	20					78	5			
TOTAL FOR PROJ NO. 13SP.20814.71							0.11						78	5			
13SP.20814.72	Rutherford	25	SR 2268	SR 2233 TO D.E.	3	NO	0.09	20					64	4			
TOTAL FOR PROJ NO. 13SP.20814.72							0.09						64	4			
13SP.20814.73	Rutherford	26	SR 2290	SR 2164 TO D.E.	3	NO	0.25	20					194	13			
TOTAL FOR PROJ NO. 13SP.20814.73							0.25						194	13			
13SP.20814.74	Rutherford	27	SR 2035	SR 1911 TO D.E.	3	NO	0.17	20					121	8			1
TOTAL FOR PROJ NO. 13SP.20814.74							0.17						121	8			1
13SP.20814.75	Rutherford	28	SR 2023	SR 1901 TO E.O.M.	3	NO	0.38	18					244	16			
TOTAL FOR PROJ NO. 13SP.20814.75							0.38						244	16			

PROJECT NO.	SHEET NO.	TOTAL NO.
13CR.10811.8, 13CR.20811.8 13SP.20814.66, ETC.		

SUMMARY OF QUANTITIES

PROJECT NO	COUNTY	MAP NO	ROUTE	DESCRIPTION	TYP NO	FINAL SURFACE TESTING REQUIRED	LENGTH MI	WIDTH FT	INCIDENTAL STONE BASE TONS	SHOULDER RECONSTRUCTION SMI	1½" MILLING SY	ASPHALT CONC SURFACE COURSE, TYPE S9.5B TONS	ASPHALT CONC SURFACE COURSE, TYPE SF9.5A TON	ASPHALT BINDER, GRADE PG 64-22 TONS	PATCHING EXISTING PAVEMENT TONS	ADJUSTMENT OF MANHOLES EA	ADJUSTMENT OF METER BOXES OR VALVE BOXES EA
13SP.20814.76	Rutherford	29	SR 2024	SR 2023 TO E.O.M.	3	NO	0.11	18				71	5				
TOTAL FOR PROJ NO. 13SP.20814.76							0.11					71	5				
13SP.20814.77	Rutherford	30	SR 2267	SR 2159 TO D.E.	3	NO	0.35	20				272	18				
TOTAL FOR PROJ NO. 13SP.20814.77							0.35					272	18				
13SP.20814.78	Rutherford	31	SR 1989	SR 1901 TO SR 1937	3	NO	0.06	16				34	2				
TOTAL FOR PROJ NO. 13SP.20814.78							0.06					34	2				
13SP.20814.79	Rutherford	32	SR 1937	SR 1989 TO BEG. LOOP	3	NO	0.1	16				57	4				
TOTAL FOR PROJ NO. 13SP.20814.79							0.1					57	4				
13SP.20814.80	Rutherford	33	SR 1937	BEG. LOOP TO END LOOP	3	NO	0.38	12				163	11				
TOTAL FOR PROJ NO. 13SP.20814.80							0.38					163	11				
13SP.20814.81	Rutherford	34	SR 2264	SR 2213 TO D.E.	3	NO	0.22	20				157	10				
TOTAL FOR PROJ NO. 13SP.20814.81							0.22					157	10				
13SP.20814.82	Rutherford	35	SR 1586	SR 1549 TO PVMT. CHANGE	3	NO	0.87	20				620	40				
TOTAL FOR PROJ NO. 13SP.20814.82							0.87					620	40				
13SP.20814.83	Rutherford	36	SR 2156	US 221A TO SR 2157	3	NO	0.26	16				148	10				1
TOTAL FOR PROJ NO. 13SP.20814.83							0.26					148	10				1
13SP.20814.84	Rutherford	37	SR 2156	SR 2157 TO E.O.M.	3	NO	0.03	18				19	1				
TOTAL FOR PROJ NO. 13SP.20814.84							0.03					19	1				
13SP.20814.85	Rutherford	38	SR 2157	SR 2159 TO E.O.M.	3	NO	0.24	18				154	10				
TOTAL FOR PROJ NO. 13SP.20814.85							0.24					154	10				
13SP.20814.86	Rutherford	39	SR 2232	SR 2159 TO SR 2156	3	NO	0.08	18				51	3				1
TOTAL FOR PROJ NO. 13SP.20814.86							0.08					51	3				1
13SP.20814.87	Rutherford	40	SR 2231	SR 2194 TO D.E.	3	NO	0.65	19				440	29				
TOTAL FOR PROJ NO. 13SP.20814.87							0.65					440	29				
13SP.20814.88	Rutherford	41	SR 2276	SR 2129 TO SR 2277	3	NO	0.08	20				57	4				
TOTAL FOR PROJ NO. 13SP.20814.88							0.08					57	4				
13SP.20814.89	Rutherford	42	SR 2277	D.E. TO D.E.	3	NO	0.48	20				404	26				
TOTAL FOR PROJ NO. 13SP.20814.89							0.48					404	26				
GRAND TOTAL							28.15		1,038.00	41.52	201.00	6,211	21,145	1,748	9,185	11	14

PROJECT NO.	SHEET NO.	TOTAL NO.
13CR.10811.8, 13CR.20811.8 13SP.20814.66, ETC.	14	

THERMOPLASTIC AND PAINT QUANTITIES

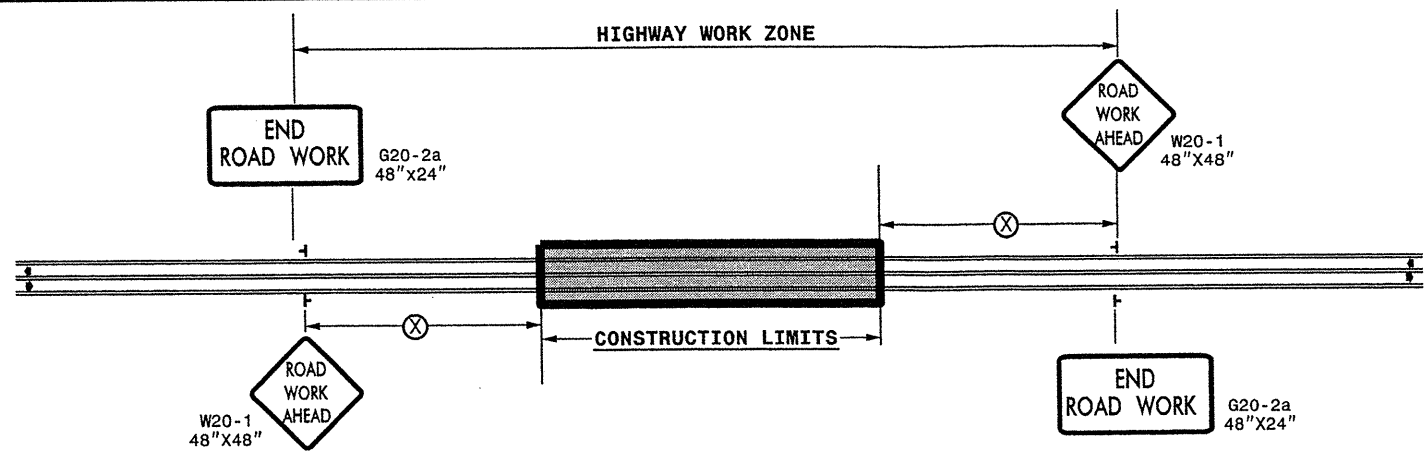
PROJECT NO	COUNTY	MAP NO	ROUTE	DESCRIPTION	468500000-E	468600000-E	470500000-E	471000000-E	472100000-E	481000000-E		483000000-E	483500000-E	484000000-N			484500000-N	484500000-N		
					4" X 90 M WHITE THERMO LF	4" X 120 M YELLOW THERMO LF	16" X 120 M WHITE THERMO LF	24" X 120 M WHITE THERMO LF	THERMO RXR 120 M EA	4" WHITE PAINT LF	4" YELLOW PAINT LF	16" WHITE PAINT LF	24" WHITE PAINT LF	PAINT MSG RXR EA	PAINT MSG STOP EA	PAINT MSG AHEAD EA	PAINT LT ARROW EA	PAINT RT ARROW EA		
13CR.10811.8	Rutherford	1	US 221 A	SC STATE LINE TO SR 2100	13,200	13,200														
		2	US 221 A	SR 2100 TO SR 1002	12,144	12,144	100	122	4											
		3	US 221	FROM SR 1191 NORTH FOR 0.35 MILES	3,696	3,696														
		4	US 221	SR 2194 TO SR 1191	16,051	16,051		36												
		5	US 221	FROM T.I.P. PROJECT TO SR 2194	8,448	8,448		12												
TOTAL FOR PROJ NO. 13CR.10811.8					53,539	53,539	100	170	4											
13CR.20811.8	Rutherford	6	SR 1194	SR 1160 TO SR 1178							31,680	31,680								
		7	SR 1504	SR 1514 TO US 64							28,512	28,512								
		8	SR 1504	SR 1510 TO PVT. CHANGE							25,978	25,978	100	116	4					
		9	SR 1504	PVT. CHANGE TO SR 1602							37,805	37,805								
		10	SR 1576	SR 1595 TO US 74 BUS.							16,896	16,896		80		8				
		11	SR 1921	NC 120 TO BRIDGE							31,891	31,891								
		12	SR 1921	BRIDGE TO SCL ELLENBORO							33,581	33,581	50	45	2					
		13	SR 1921	SCL ELLENBORO TO US 74 BUS.							1,267	1,267		36						
		14	SR 1544	SR 1546 TO US 74 ALT							17,530	17,530		24			2	2		
		15	SR 2105	US 221 A TO SR 2104							23,232	23,232								
		16	SR 2105	SR 2104 TO US 221							39,917	39,917	100	122	4					
		17	SR 1769	SR 1749 TO SR 1786							18,374	18,374								
		18	SR 1769	SR 1786 TO SR 1794							24,710	24,710					30			
		TOTAL FOR PROJ NO. 13CR.20811.8										331,373	331,373	250	423	10	8	30	2	2
												662,746		48			4			
		13SP.20814.66	Rutherford	19	SR 1308	SR 1306 TO E.O.M.							17,200	17,200						
		TOTAL FOR PROJ NO. 13SP.20814.66											17,200	17,200						
												34,400								
13SP.20814.67	Rutherford	20	SR 2273	US 221A TO D.E.																
TOTAL FOR PROJ NO. 13SP.20814.67																				
13SP.20814.68	Rutherford	21	SR 2262	US 221A TO D.E.																
TOTAL FOR PROJ NO. 13SP.20814.68																				
13SP.20814.69	Rutherford	22	SR 2248	SR 2179 TO SR 2179																
TOTAL FOR PROJ NO. 13SP.20814.69																				
13SP.20814.70	Rutherford	23	SR 2233	SR 2164 TO SR 2168																
TOTAL FOR PROJ NO. 13SP.20814.70																				
13SP.20814.71	Rutherford	24	SR 2234	SR 2233 TO E.O.M.																
TOTAL FOR PROJ NO. 13SP.20814.71																				
13SP.20814.72	Rutherford	25	SR 2268	SR 2233 TO D.E.																
TOTAL FOR PROJ NO. 13SP.20814.72																				
13SP.20814.73	Rutherford	26	SR 2290	SR 2164 TO D.E.																
TOTAL FOR PROJ NO. 13SP.20814.73																				
13SP.20814.74	Rutherford	27	SR 2035	SR 1911 TO D.E.																
TOTAL FOR PROJ NO. 13SP.20814.74																				
13SP.20814.75	Rutherford	28	SR 2023	SR 1901 TO E.O.M.																
TOTAL FOR PROJ NO. 13SP.20814.75																				
13SP.20814.76	Rutherford	29	SR 2024	SR 2023 TO E.O.M.																
TOTAL FOR PROJ NO. 13SP.20814.76																				
13SP.20814.77	Rutherford	30	SR 2267	SR 2159 TO D.E.																
TOTAL FOR PROJ NO. 13SP.20814.77																				
13SP.20814.78	Rutherford	31	SR 1989	SR 1901 TO SR 1937							1,267	1,267								
TOTAL FOR PROJ NO. 13SP.20814.78											1,267	1,267								
										2,534										
13SP.20814.79	Rutherford	32	SR 1937	SR 1989 TO BEG. LOOP							2,112	2,112								
TOTAL FOR PROJ NO. 13SP.20814.79											2,112	2,112								
										4,224										

PROJECT NO.	SHEET NO.	TOTAL NO.
13CR.10811.8, 13CR.20811.8 13SP.20814.66, ETC.	15	

THERMOPLASTIC AND PAINT QUANTITIES

PROJECT NO	COUNTY	MAP NO	ROUTE	DESCRIPTION	4685000000-E	4686000000-E	4705000000-E	4710000000-E	4721000000-E	4810000000-E		4830000000-E	4835000000-E	4840000000-N			4845000000-N	4845000000-N
					4" X 90 M WHITE THERMO LF	4" X 120 M YELLOW THERMO LF	16" X 120 M WHITE THERMO LF	24" X 120 M WHITE THERMO LF	THERMO RXR 120 M EA	4" WHITE PAINT LF	4" YELLOW PAINT LF	16" WHITE PAINT LF	24" WHITE PAINT LF	PAINT MSG RXR EA	PAINT MSG STOP EA	PAINT MSG AHEAD EA	PAINT LT ARROW EA	PAINT RT ARROW EA
13SP.20814.80	Rutherford	33	SR 1937	BEG. LOOP TO END LOOP														
TOTAL FOR PROJ NO. 13SP.20814.80																		
13SP.20814.81	Rutherford	34	SR 2264	SR 2213 TO D.E.														
TOTAL FOR PROJ NO. 13SP.20814.81																		
13SP.20814.82	Rutherford	35	SR 1586	SR 1549 TO PVMT. CHANGE						18,374	18,374							
TOTAL FOR PROJ NO. 13SP.20814.82										18,374	18,374							
										36,748								
13SP.20814.83	Rutherford	36	SR 2156	US 221A TO SR 2157						5,491	5,491							
TOTAL FOR PROJ NO. 13SP.20814.83										5,491	5,491							
										10,982								
13SP.20814.84	Rutherford	37	SR 2156	SR 2157 TO E.O.M.														
TOTAL FOR PROJ NO. 13SP.20814.84																		
13SP.20814.85	Rutherford	38	SR 2157	SR 2159 TO E.O.M.														
TOTAL FOR PROJ NO. 13SP.20814.85																		
13SP.20814.86	Rutherford	39	SR 2232	SR 2159 TO SR 2156														
TOTAL FOR PROJ NO. 13SP.20814.86																		
13SP.20814.87	Rutherford	40	SR 2231	SR 2194 TO D.E.														
TOTAL FOR PROJ NO. 13SP.20814.87																		
13SP.20814.88	Rutherford	41	SR 2276	SR 2129 TO SR 2277														
TOTAL FOR PROJ NO. 13SP.20814.88																		
13SP.20814.89	Rutherford	42	SR 2277	D.E. TO D.E.														
TOTAL FOR PROJ NO. 13SP.20814.89																		
GRAND TOTAL					53,539	53,539	100	170	4	375,817	375,817	250	423	10	8	30	2	2
										751,634					48			4

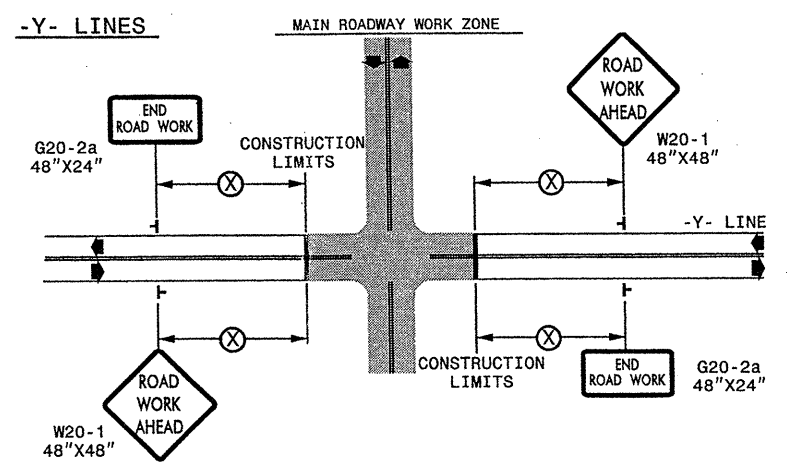
TWO-WAY UNDIVIDED ** (L-LINES)



POSTED SPEED LIMIT (M.P.H.)	RECOMMENDED MINIMUM SIGN SPACING
≤ 50	500'
≥ 55	1000'

STATE OF NORTH CAROLINA
DEPT. OF TRANSPORTATION
DIVISION OF HIGHWAYS
RALEIGH, N.C.

ROADWAYS INTERSECTING ALONG 2 WAY UNDIVIDED WORK ZONE (Y-LINES)



DETAIL DRAWING FOR
TWO-WAY UNDIVIDED
WORK ZONE WARNING SIGNS

GENERAL NOTES


- USE FLUORESCENT ORANGE SHEETING (TYPE VII OR HIGHER) ON ALL ADVANCED WORK ZONE SIGNS.
- DO NOT INSTALL ADVANCE WARNING SIGNS MORE THAN 3 DAYS PRIOR TO BEGINNING OF WORK.
- SIGNS SHOWN ARE REQUIRED FOR WORK ZONES THAT WILL REMAIN IN EFFECT OVERNIGHT. FOR SHORT-TERM DAILY MAINTENANCE TYPE OPERATIONS, THIS SIGNING APPLICATION IS OPTIONAL; MAY USE ONLY APPLICABLE ROADWAY STANDARD DRAWINGS INSTEAD. HOWEVER, IF THIS SIGNING APPLICATION IS USED, SIGNS MAY BE PORTABLE MOUNTED.
- ALL SIGN SPACING DIMENSIONS ARE APPROXIMATE, FIELD ADJUST AS NECESSARY OR AS DIRECTED.
- USE 3LB STEEL U-CHANNEL POST OR 4" X 4" WOOD POST FOR ALL WORK ZONE SIGNS. 3LB STEEL U-CHANNEL POSTS MUST MEET THE REQUIREMENTS OF STANDARD SPECIFICATION SECTION 1094-1(B), MAY BE GALVANIZED STEEL, OR MAY BE PAINTED GREEN BY THE POST MANUFACTURER. SQUARE STEEL TUBING POSTS HAVING EQUIVALENT STRENGTH OF THE 3 LB STEEL U-CHANNEL POST ARE ALSO ACCEPTABLE FOR USE. ERECT SIGNS PER ROADWAY STANDARD DRAWING 1110.01. PAYMENT FOR WOOD POSTS, 3LB STEEL U-CHANNEL AND SQUARE STEEL TUBING POSTS WITH SIGNS WILL BE MADE ACCORDING TO STANDARD SPECIFICATION "WORK ZONE SIGNS" SECTION 1110.
- WHEN NECESSARY, USE SPLICING IN ACCORDANCE WITH ROADWAY STANDARD DRAWING NO. 1110.01. REMOVE ENTIRE POST WHEN REMOVING SIGNS WITH SPLICED POSTS.
- DO NOT BACK BRACE SIGN SUPPORTS.
- ** TWO-WAY UNDIVIDED ADVANCE WARNING SIGN CONFIGURATION MAY BE USED ON URBAN MULTI-LANE FACILITIES WHERE CONDITIONS LIMIT THE USE OF DUAL MOUNTED SIGNS AS DETERMINED BY THE ENGINEER.

LEGEND

⊣ STATIONARY SIGN

◀ DIRECTION OF TRAFFIC FLOW

SHEET 1 OF 1





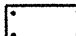
APPROVED: _____ DATE: _____	DETAIL DRAWING FOR TWO-WAY UNDIVIDED AND URBAN FREEWAYS ADVANCED WORK ZONE WARNING SIGNS	
SEAL	SCALE: NONE	REVISIONS
	DATE: _____	7-98 10/01
	DWG. BY: _____	10-98 03/04
	DESIGN BY: _____	01/01 11/04
REVIEWED BY: _____		

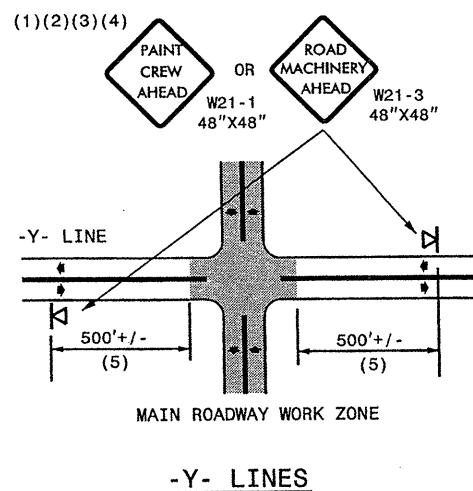
14-DEC-2000 14:09 \\GROUPLS-WZ\TCCC\M&S Division\Share Resur\fac\20\Resur\fac\20\Western\20\Div\3\C202693A-Z\13CR.10811.8x26_Rutherford.US22\Am45-2way_Undiv-&-Ur-bon-
 \DD & S\SR\AT\WZ\TC244733

GENERAL NOTES

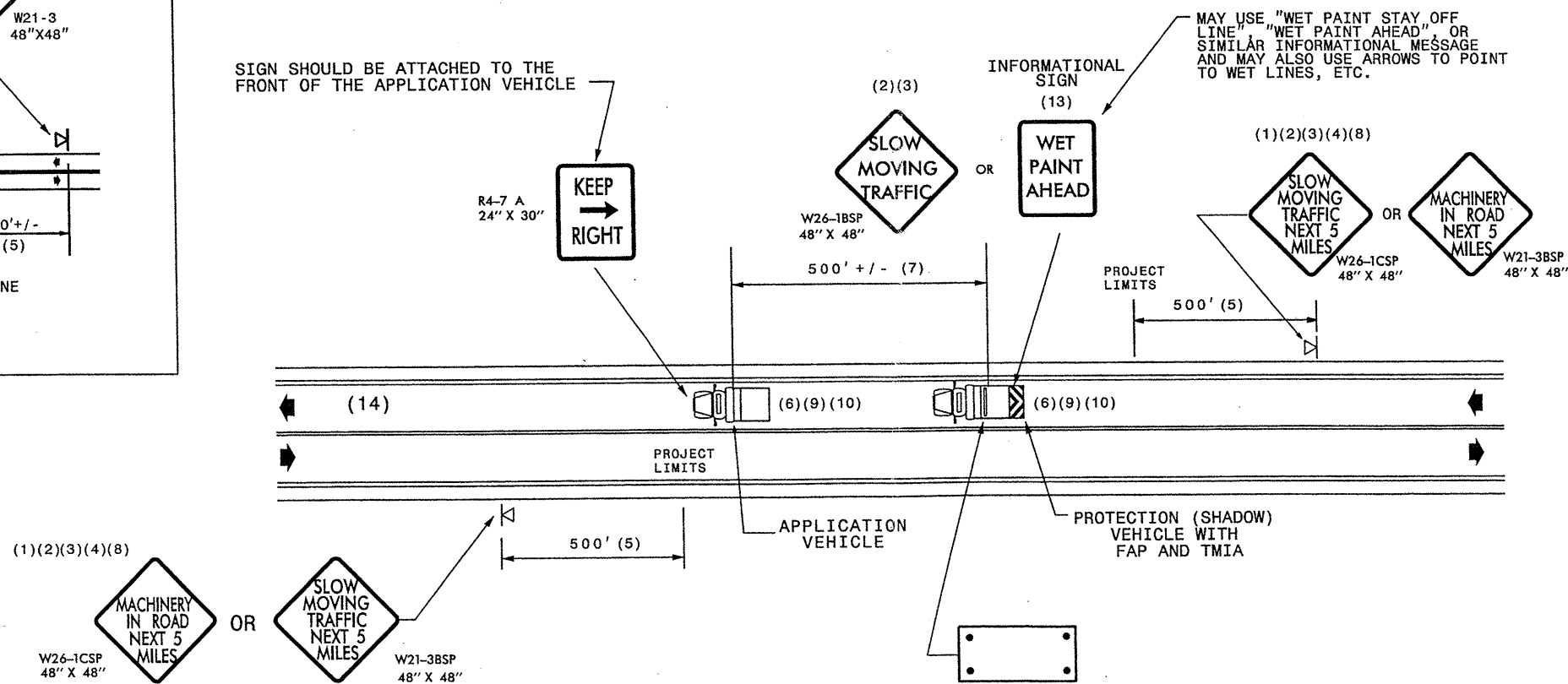
- (1) THE FOLLOWING OPTIONS MAY BE USED FOR ADVANCE WARNING SIGNS:
 - A. TRUCK MOUNTED SIGNS
 - B. TRUCK MOUNTED CHANGEABLE MESSAGE SIGN (CMS)
 - C. GROUND MOUNTED ADVANCE WARNING SIGNS (MUST CIRCLE TO PICK UP SIGNS)
 - D. GROUND MOUNTED CHANGEABLE MESSAGE SIGN (CMS) (MUST USE CIRCLE TO PICK UP SIGNS)
- (2) ALL ADVANCE WARNING SIGNS MUST BE 48" X 48" WITH FLUORESCENT ORANGE TYPE VII, VIII OR IX SHEETING. IF SPACE LIMITATIONS ON SHOULDER PROHIBIT A 48" X 48" SIGN, A SMALLER SIGN CAN BE USED WITH APPROVAL FROM ENGINEER.
- (3) SIGNS ON VEHICLES SHOULD BE MOUNTED A MINIMUM OF ONE (1) FOOT FROM THE GROUND AND SHOULD NOT BLOCK THE MOTORIST'S SIGHT OF THE FLASHING ARROW PANEL AND/OR LIGHTBAR.
- (4) GROUND MOUNTED ADVANCED WARNING SIGNS SHOULD BE MOUNTED A MINIMUM OF ONE (1) FOOT FROM THE GROUND TO BOTTOM OF SIGN.
- (5) SIGN SPACING SHOULD BE ADJUSTED FOR HORIZONTAL AND VERTICAL CURVES, ETC. TO IMPROVE SIGHT DISTANCES.
- (6) ADDITIONAL VEHICLES SHOULD BE USED IN WORK CARAVAN TO FACILITATE DRYING OF PAVEMENT MARKING MATERIAL (TMIA'S ARE OPTIONAL ON THESE ADDITIONAL VEHICLES). HOWEVER, THE FIRST VEHICLE MOTORISTS SEE IN THE TRAVEL LANE SHALL HAVE A TMIA.
- (7) ADJUST DISTANCE AS NEEDED TO PREVENT MOTORISTS FROM ENTERING SPACE BETWEEN THE APPLICATION AND PROTECTION VEHICLE. DISTANCE CAN BE LENGTHENED TO ACCOMMODATE SIGHT DISTANCE NEEDS.
- (8) ROUND UP MILEAGE TO NEXT WHOLE MILE. WORK ZONE SHOULD NOT EXCEED FIVE (5) MILES IN LENGTH.
- (9) RADIO COMMUNICATION BETWEEN VEHICLES IS REQUIRED.
- (10) USE OF A LIGHT BAR ON ALL VEHICLES IS PREFERRED, BUT A ROTATING BEACON MAY BE USED INSTEAD.
- (11) IF WORK IS PERFORMED AT NIGHT, THE WORK AREA MUST BE ILLUMINATED WITH MACHINE AND/OR TOWER LIGHTS AS APPROVED BY THE ENGINEER.
- (12) ALL TRAFFIC CONTROL DEVICES WILL BE CONSIDERED INCIDENTAL TO THE PAY ITEMS FOR PAVEMENT MARKING AND MARKERS.
- (13) INFORMATIONAL SIGNS SHOULD BE ACTIVITY SPECIFIC, i.e. "PAINT CREW IN ROAD". SIGNS MAY BE RECTANGULAR OR DIAMOND SHAPE. SIGN SIZE SHOULD BE BASED ON THE MOTORIST ABILITY TO RECOGNIZE SIGN WHEN TRAVELING FIVE (5) MILES ABOVE POSTED SPEED LIMIT.
- (14) IF A LEAD VEHICLE IS ADDED TO OPERATION, IT SHOULD HAVE THE SAME ADVANCE WARNING SIGNS AS THE APPLICATION VEHICLE SHOWN BELOW.

LEGEND

-  PORTABLE SIGN. SIGNS MUST BE NCHRP-350 AND NCDOT APPROVED.
-  DIRECTION OF TRAFFIC FLOW
-  APPLICATION VEHICLE WITH LIGHT BAR
-  PROTECTION VEHICLE WITH TRUCK MOUNTED IMPACT ATTENUATOR (TMIA) AND LIGHT BAR (SEE ROADWAY STANDARD NO. 1165.01). TMIA MUST BE NCHRP-350 TEST LEVEL 3 (60+MPH) APPROVED.
-  FLASHING ARROW PANEL, TYPE "B" (60"X30" MIN.), "CAUTION MODE"



SIGN SHOULD BE ATTACHED TO THE FRONT OF THE APPLICATION VEHICLE



MOVING OPERATION CARAVAN

(OPERATIONS TRAVELING 3 MPH OR FASTER)
PLACING PAVEMENT MARKING OR MARKERS
ON TWO-LANE TWO-WAY ROADWAYS

DRAWING NUMBER 6
IMPLEMENTATION DATE: 07/01/97
REVISED: 11/03/04