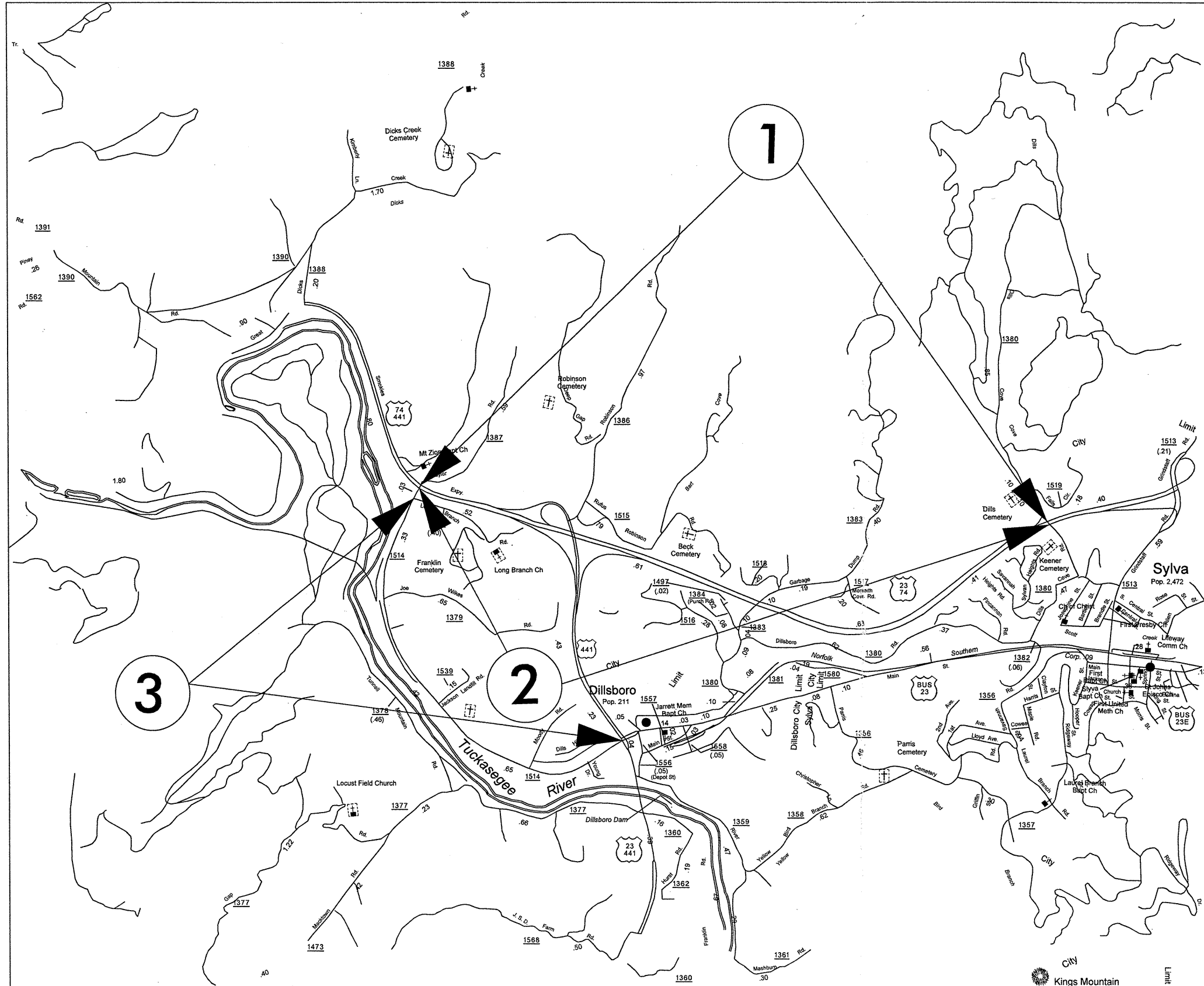


JACKSON COUNTY

PROJECT REFERENCE NO.		SHEET NO.
14CR.10501.6		1
STATE PROJECT	F.A. PROJECT NO.	DESCRIPTION
14CR.20501.8		
14CR.20871.7		



050197

PROJECT REFERENCE NO.		SHEET NO.
14CR.10501.6		3
STATE PROJECT	F.A. PROJECT NO.	DESCRIPTION
14CR.20501.8		
14CR.20871.7		

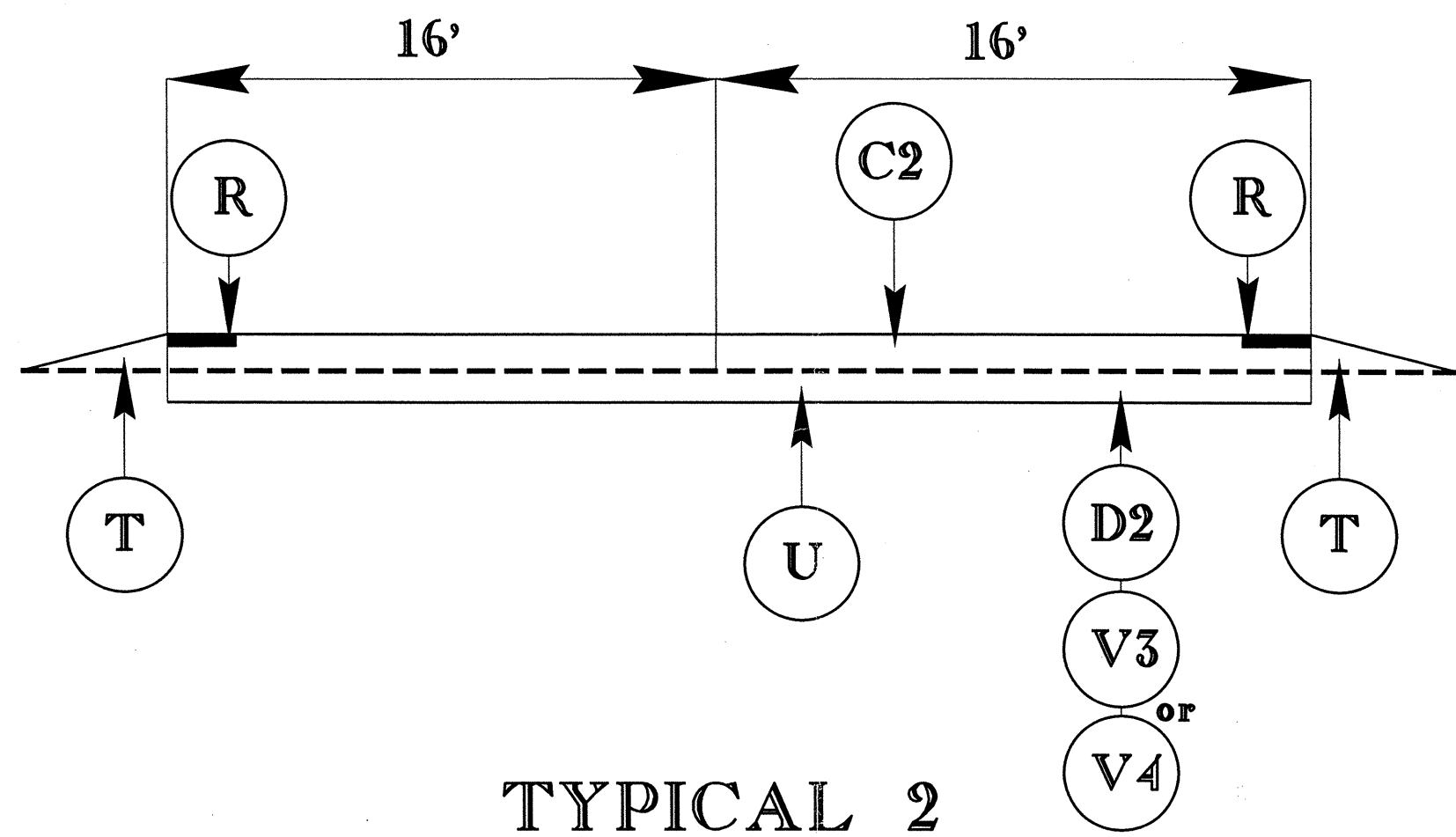
SURFACING SCHEDULE

ITEM NO	DESCRIPTION
C1	ASPHALT CONCRETE SURFACE COURSE, TYPE S9.5B AT AN AVERAGE RATE OF 168 LBS. PER SQ. YD. (1 1/2")
C2	ASPHALT CONCRETE SURFACE COURSE, TYPE S9.5C AT AN AVERAGE RATE OF 168 LBS. PER SQ. YD. (1 1/2")
D1	ASPHALT CONCRETE INTERMED. COURSE, TYPE I19.0B, AT AN AVERAGE RATE OF 285 LBS. PER SQ. YD. (2 1/2")
D2	ASPHALT CONCRETE INTERMED. COURSE, TYPE I19.0C, AT AN AVERAGE RATE OF 342 LBS. PER SQ. YD. (3")
V1	MILLING ASPHALT PAVEMENT 1 1/2" IN DEPTH AS DIRECTED BY PROJECT ENGINEER.
V2	MILLING ASPHALT PAVEMENT 2 1/2" IN DEPTH AS DIRECTED BY PROJECT ENGINEER.
V3	MILLING ASPHALT PAVEMENT 3" IN DEPTH AS DIRECTED BY PROJECT ENGINEER.
V4	MILLING ASPHALT PAVEMENT 6" IN DEPTH AS DIRECTED BY PROJECT ENGINEER.
R	MILLED RUMBLE STRIPS
T	SHOULDER RECONSTRUCTION WITH ABCM AS DIRECTED BY PROJECT ENGINEER - SEE SPECIAL PROVISIONS
U	EXISTING PAVEMENT

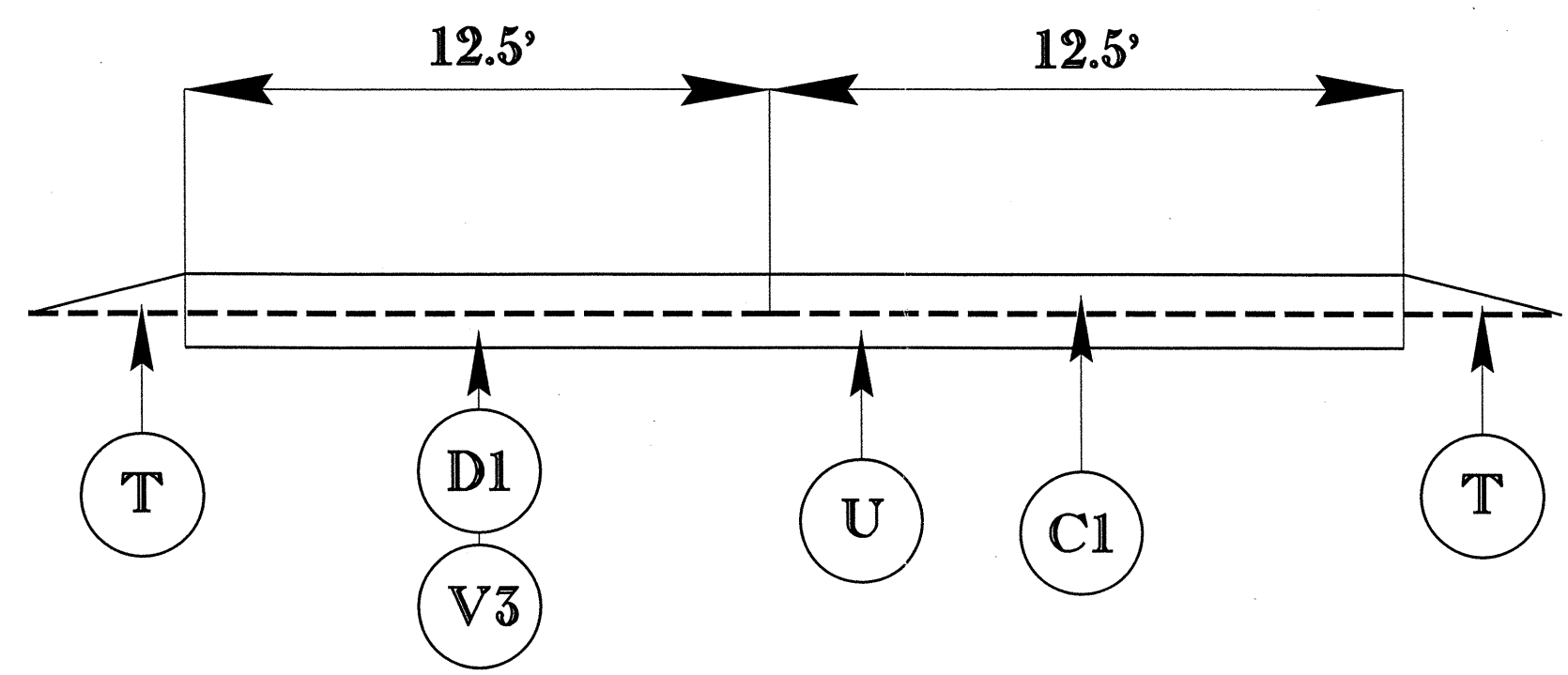
050197

PROJECT REFERENCE NO.		SHEET NO.
14CR.10501.6		4
STATE PROJECT	F.A. PROJECT NO.	DESCRIPTION
14CR.20501.8		
14CR.20871.7		

TYPICAL 1

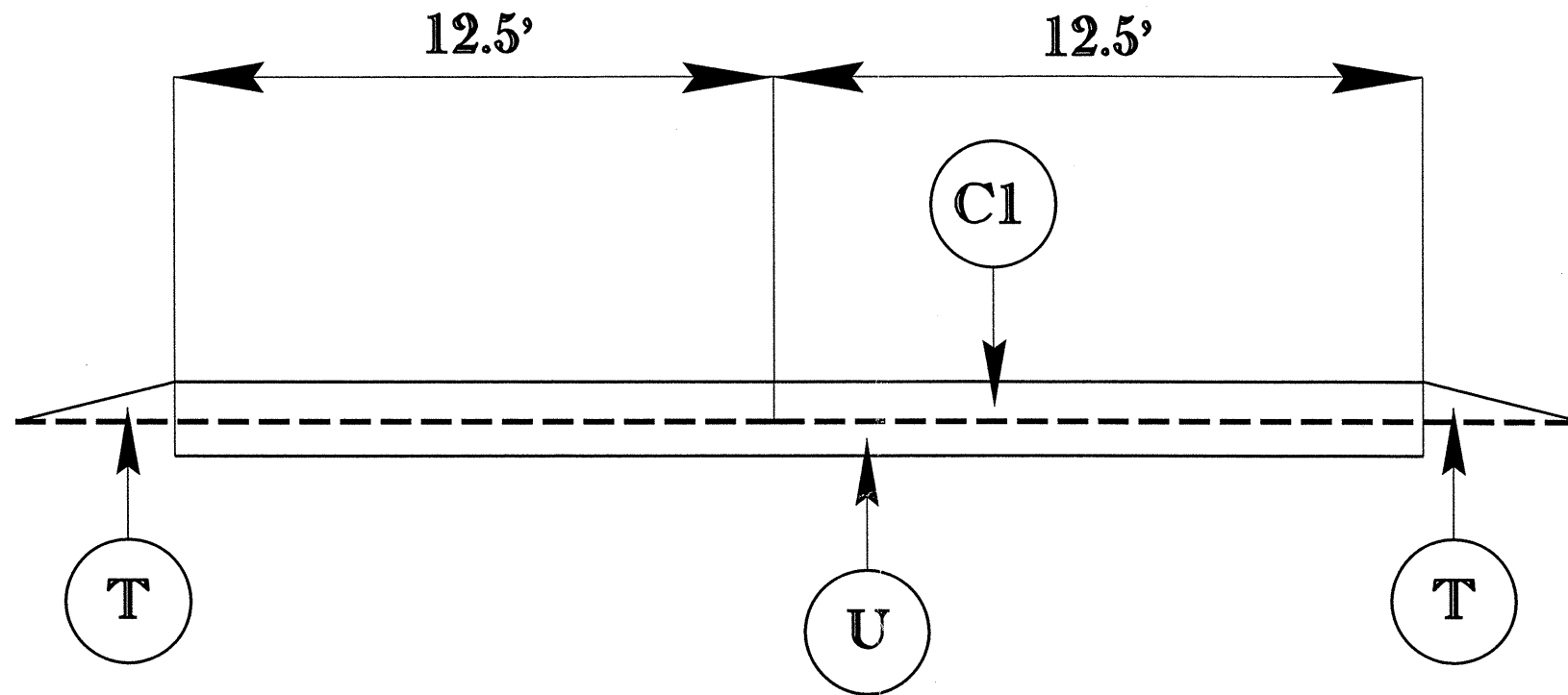


TYPICAL 2

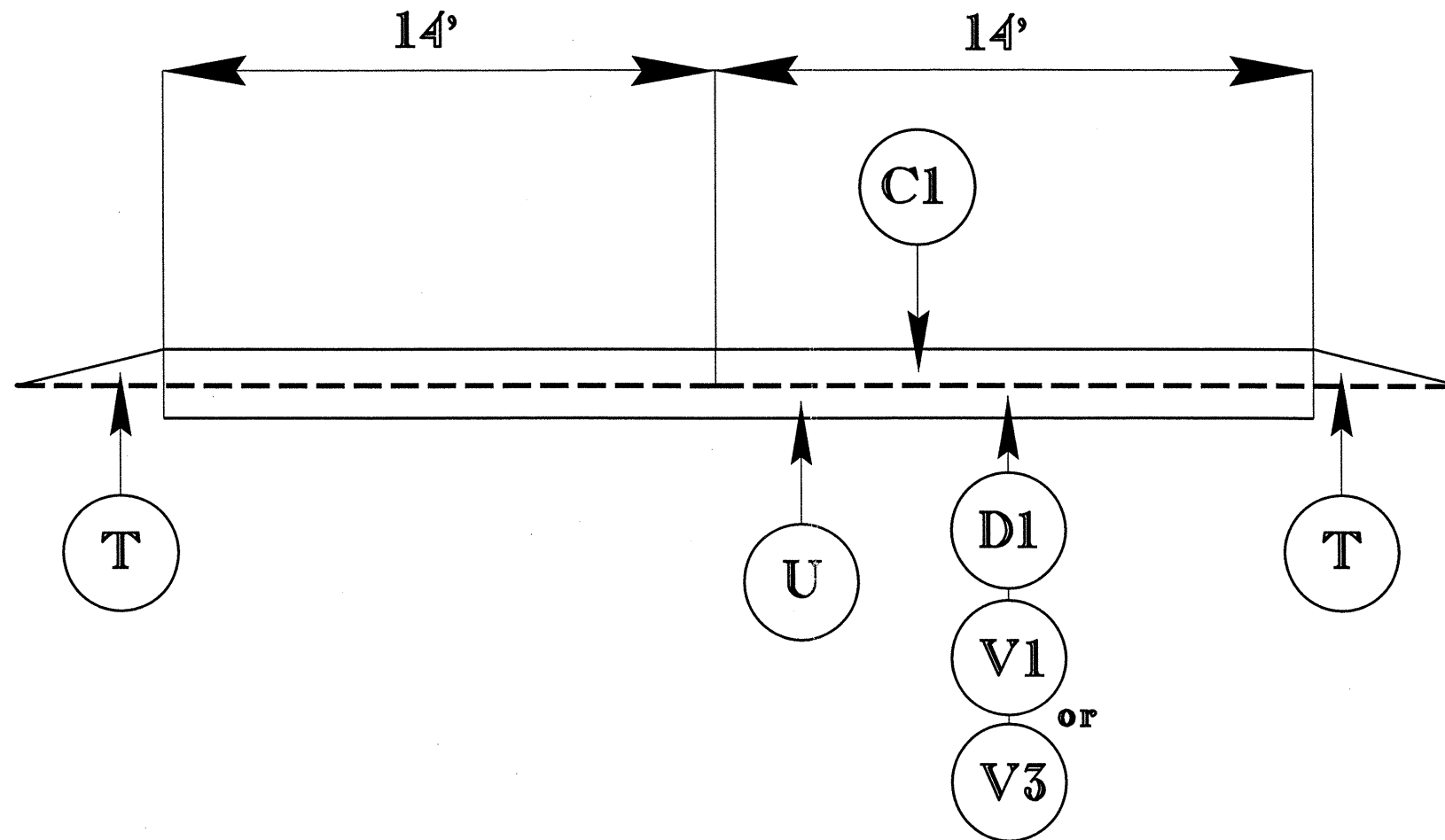


050197

TYPICAL 3



TYPICAL 4

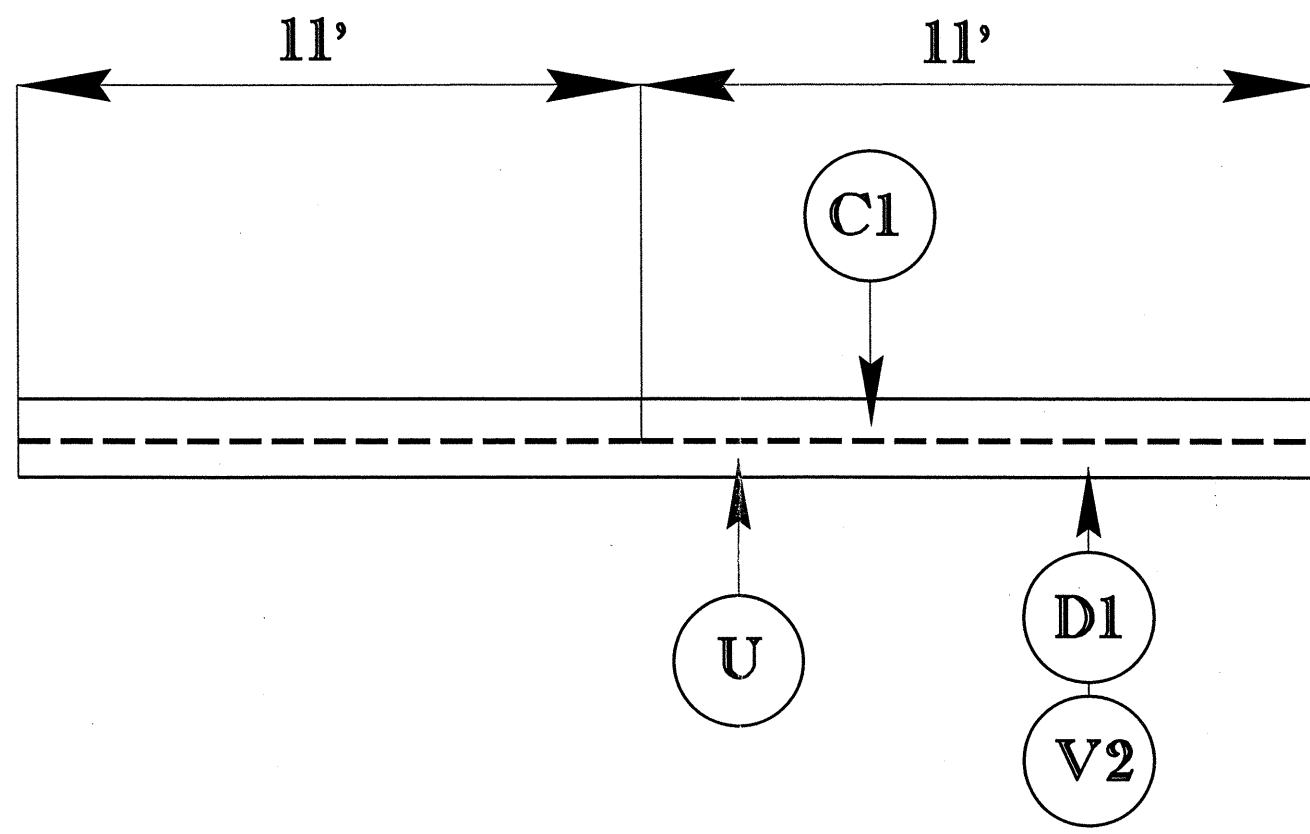


PROJECT REFERENCE NO.		SHEET NO.
14CR.10501.6		5
STATE PROJECT	F.A. PROJECT NO.	DESCRIPTION
14CR.20501.8		
14CR.20871.7		

050197

PROJECT REFERENCE NO.		SHEET NO.
14CR.10501.6		6
STATE PROJECT	F.A. PROJECT NO.	DESCRIPTION
14CR.20501.8		
14CR.20871.7		

TYPICAL 5



PROJECT NO.	SHEET NO.	TOTAL NO.
14CR.10501.6, 14CR.20501.8 14CR.20871.7	7	

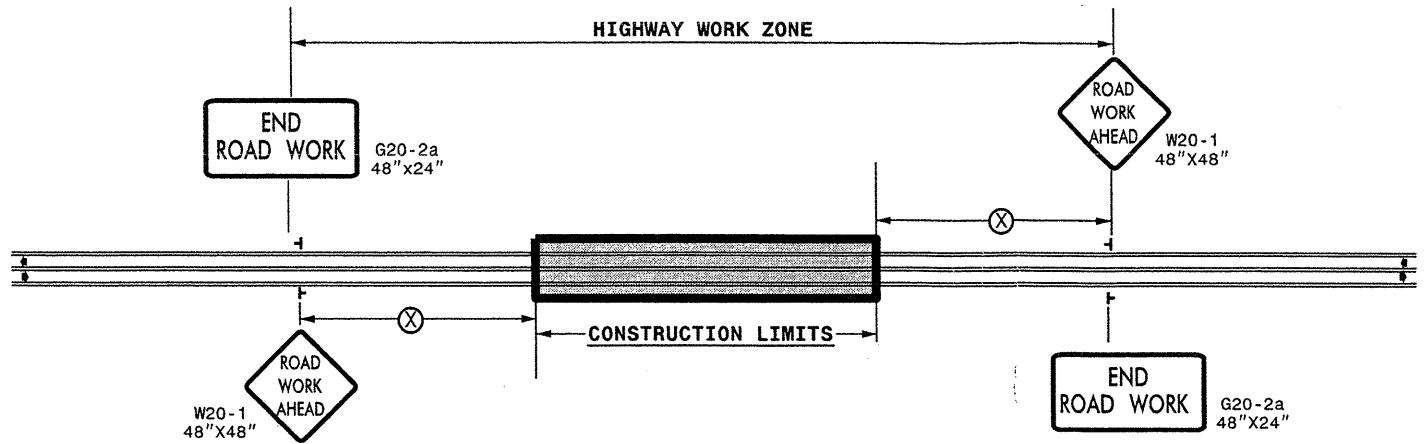
SUMMARY OF QUANTITIES

PROJECT NO	COUNTY	MAP NO	ROUTE	DESCRIPTION	TYP NO	LENGTH MI	WIDTH FT	INCIDENTAL STONE BASE TONS	SHOULDER RECONSTRUCTION SMI	3" MILLING SY	6" MILLING SY	1 1/2" MILLING SY	MILLING ASPHALT PAVEMENT, 2-1/2" SY	MILLED RUMBLE STRIPS LF	INTERMEDIATE COURSE, I19.0B TONS	INTERMEDIATE COURSE, I19.0C TONS	SURFACE COURSE, S9.5B TONS	LEVELING COURSE, S9.5B TONS	SURFACE COURSE, S9.5C TONS	PG 64-22 PLANT MIX TONS	PG 70-22 PLANT MIX TONS
14CR.10501.6	Jackson	1	US 74 EAST	FROM SR 1514 TO BRIDGE # 109 AT SR 1513	1	2.58	32		5.16	18622	9152			27384		6,388			4,285	300	257
		"	Exit 81A Ramp	FROM US 74 TO US 441 SOUTH	2	0.36	25		0.72	1408					255		473			40	
		"	Exit 81B Ramp	FROM US 74 TO US 441 NORTH	3	0.19	25		0.28								250			15	
		"	74 Access Ramp	FROM US 441 TO US 74 EAST	2	0.23	25		0.23	916					166		313			27	
		"	Exit 83 Ramp	FROM US 74 TO SR 1513	2	0.33	25		0.66	2640					479		433			48	
TOTAL FOR MAP NO. 1						3.69			7.05	23586	9152			27384	900	6,388	1,469		4,285	430	257
		2	US 74 WEST	FROM SR1514 TO BRIDGE # 110 AT SR 1513	1	2.58	32		5.16	18163	8236			27384		6,272			4,335	295	260
		"	Exit 81 Ramp	FROM US 74 W TO US 441 SOUTH	2	0.29	25		0.46	645					119		380			28	
		"	74 Access Ramp	FROM US 441 SOUTH TO US 74 WEST	2	0.47	25		0.94	1478					268		615			49	
TOTAL FOR MAP NO. 2						3.34			6.56	20286	8236			27384	387	6,272	995		4,335	372	260
TOTAL FOR PROJ NO. 14CR.10501.6						7.03			13.61	43872	17388			54768	1287	12,660	2,464		8,620	802	517
14CR.20501.8	Jackson	3	SR-1514	FROM US 74 TO 70' WEST OF US-441 SOUTH	4	1.43	28	15	2.9	4700		23490			2948		2,100			265	
TOTAL FOR PROJ NO. 14CR.20501.8						1.43		15	2.9	4700	0	23490	0	2948	2,100	265					
14CR.20871.7	Swain	4	SR-1368	FROM SR-1361 TO US-19	5	0.63	22	15					8131		1240		757	728		151	
TOTAL FOR PROJ NO. 14CR.20871.7						0.63		15	0	0	0	0	8131	0	1240	757	728	151			
GRAND TOTAL						9.09		30	16.51	48,572	17,388	23,490	8,131	54,768	5,475	12,660	5,321	728	8,620	1,218	517

THERMOPLASTIC AND PAINT QUANTITIES

PROJECT NO	COUNTY	MAP NO	ROUTE	DESCRIPTION	4685000000-E		4686000000-E	4695000000-E	4725000000-E	4810000000-E		4905000000-N
					4" X 90 M WHITE THERMO LF	4" X 90 M YELLOW THERMO LF	4" X 120 M WHITE THERMO LF	8" X 90 M WHITE THERMO LF	THERMO STR ARROW 90 M EA	4" WHITE PAINT LF	4" YELLOW PAINT LF	SNOW PLOWABLE MARKERS (CRYSTAL & RED) EA
14CR.10501.6	Jackson	1	US 74 EAST	FROM SR 1514 TO BRIDGE # 109 AT SR 1513	27,761	13,622	3,870	1,524	3	13,622	13,622	250
		"	Exit 81A Ramp	FROM US 74 TO US 441 SOUTH	3,874			294				20
		"	Exit 81B Ramp	FROM US 74 TO US 441 NORTH	2,044	1,254		300		994	694	20
		"	74 Access Ramp	FROM US 441 TO US 74 EAST	2,475	1,100		280				20
		"	Exit 83 Ramp	FROM US 74 TO SR 1513	1,742	1,692		314		1,742	1,742	20
TOTAL FOR MAP NO. 1					37,896	17,668	3,870	2,712	3	16,358	16,058	330
		2	US 74 WEST	FROM SR1514 TO BRIDGE # 110 AT SR 1513	27,761	13,622	3,870	1,214	6	13,622	13,622	250
		"	Exit 81 Ramp	FROM US 74 W TO US 441 SOUTH	3,120	1,914		324		1,164		20
		"	74 Access Ramp	FROM US 441 SOUTH TO US 74 WEST	5,057	3,102		300	3	2,181		20
TOTAL FOR MAP NO. 2					35,938	18,638	3,870	1,838	9	16,967	13,622	290
TOTAL FOR PROJ NO. 14CR.10501.6					73,834	36,306	7,740	4,550	12	33,325	29,680	620
					110,140					63,005		
14CR.20501.8	Jackson	3	SR-1514	FROM US 74 TO 70' WEST OF US-441 SOUTH						30,774	18,876	
TOTAL FOR PROJ NO. 14CR.20501.8										30,774	18,876	
										49,650		
14CR.20871.7	Swain	4	SR-1368	FROM SR-1361 TO US-19						13,558	8,316	
TOTAL FOR PROJ NO. 14CR.20871.7										13,558	8,316	
										21,874		
GRAND TOTAL					73,834	36,306	7,740	4,550	12	77,657	56,872	620
					110,140					134,529		

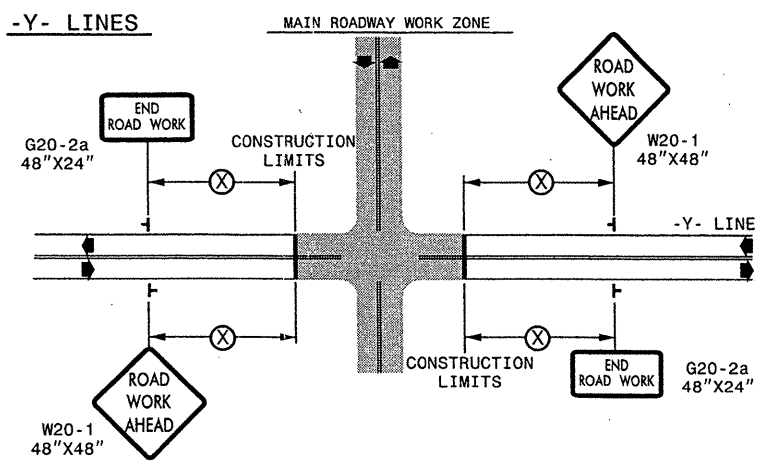
TWO-WAY UNDIVIDED ** (L-LINES)



POSTED SPEED LIMIT (M.P.H.)	RECOMMENDED MINIMUM SIGN SPACING
≤ 50	500'
≥ 55	1000'

STATE OF NORTH CAROLINA
DEPT. OF TRANSPORTATION
DIVISION OF HIGHWAYS
RALEIGH, N.C.

ROADWAYS INTERSECTING ALONG 2 WAY UNDIVIDED WORK ZONE (Y-LINES)



GENERAL NOTES

- USE FLUORESCENT ORANGE SHEETING (TYPE VII OR HIGHER) ON ALL ADVANCED WORK ZONE SIGNS.
- DO NOT INSTALL ADVANCE WARNING SIGNS MORE THAN 3 DAYS PRIOR TO BEGINNING OF WORK.
- SIGNS SHOWN ARE REQUIRED FOR WORK ZONES THAT WILL REMAIN IN EFFECT OVERNIGHT. FOR SHORT-TERM DAILY MAINTENANCE TYPE OPERATIONS, THIS SIGNING APPLICATION IS OPTIONAL; MAY USE ONLY APPLICABLE ROADWAY STANDARD DRAWINGS INSTEAD. HOWEVER, IF THIS SIGNING APPLICATION IS USED, SIGNS MAY BE PORTABLE MOUNTED.
- ALL SIGN SPACING DIMENSIONS ARE APPROXIMATE, FIELD ADJUST AS NECESSARY OR AS DIRECTED.
- USE 3LB STEEL U-CHANNEL POST OR 4" X 4" WOOD POST FOR ALL WORK ZONE SIGNS. 3LB STEEL U-CHANNEL POSTS MUST MEET THE REQUIREMENTS OF STANDARD SPECIFICATION SECTION 1094-1(B), MAY BE GALVANIZED STEEL, OR MAY BE PAINTED GREEN BY THE POST MANUFACTURER. SQUARE STEEL TUBING POSTS HAVING EQUIVALENT STRENGTH OF THE 3 LB STEEL U-CHANNEL POST ARE ALSO ACCEPTABLE FOR USE. ERECT SIGNS PER ROADWAY STANDARD DRAWING 1110.01. PAYMENT FOR WOOD POSTS, 3LB STEEL U-CHANNEL AND SQUARE STEEL TUBING POSTS WITH SIGNS WILL BE MADE ACCORDING TO STANDARD SPECIFICATION "WORK ZONE SIGNS" SECTION 1110.
- WHEN NECESSARY, USE SPLICING IN ACCORDANCE WITH ROADWAY STANDARD DRAWING NO. 1110.01. REMOVE ENTIRE POST WHEN REMOVING SIGNS WITH SPLICED POSTS.
- DO NOT BACK BRACE SIGN SUPPORTS.
- ** TWO-WAY UNDIVIDED ADVANCE WARNING SIGN CONFIGURATION MAY BE USED ON URBAN MULTI-LANE FACILITIES WHERE CONDITIONS LIMIT THE USE OF DUAL MOUNTED SIGNS AS DETERMINED BY THE ENGINEER.

LEGEND

┆ STATIONARY SIGN

◀ DIRECTION OF TRAFFIC FLOW

DETAIL DRAWING FOR
TWO-WAY UNDIVIDED
WORK ZONE WARNING SIGNS

SHEET 1 OF 1

APPROVED: _____ DATE: _____	DETAIL DRAWING FOR TWO-WAY UNDIVIDED AND URBAN FREEWAYS ADVANCED WORK ZONE WARNING SIGNS		
SEAL	SCALE: NONE		
	DATE: 7-98		REVISIONS
	DWG. BY:		10-98 03/04
	DESIGN BY:		01/01 11/04
REVIEWED BY:		CARD FILE	

22-DEC-2010 10:05 AM C:\DOT\OFFICE\GROUPS\WZT\CC\M&S Division\Share\Resurfacing\2010\Western\2010\Div14\202706A-C-14CR.10501.6x3-2way-Undiv.-&-Urban-Frwys-stationary.dgn
 WZT\CC\224133.sxd