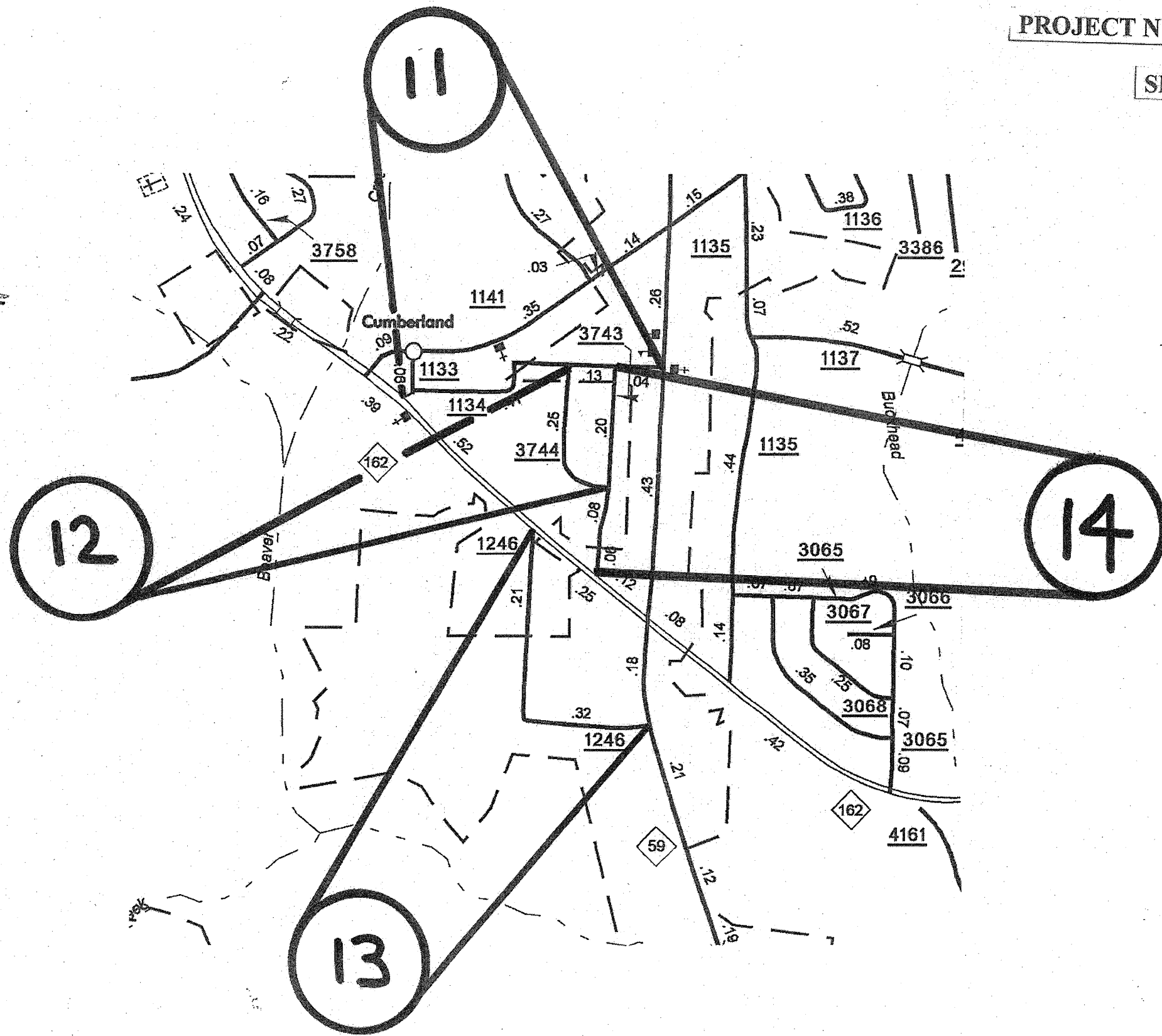
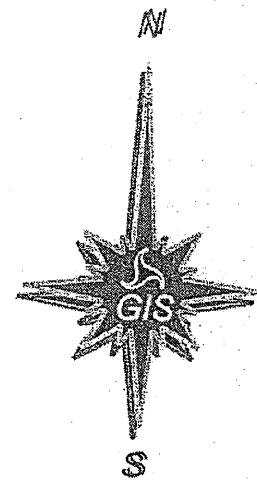
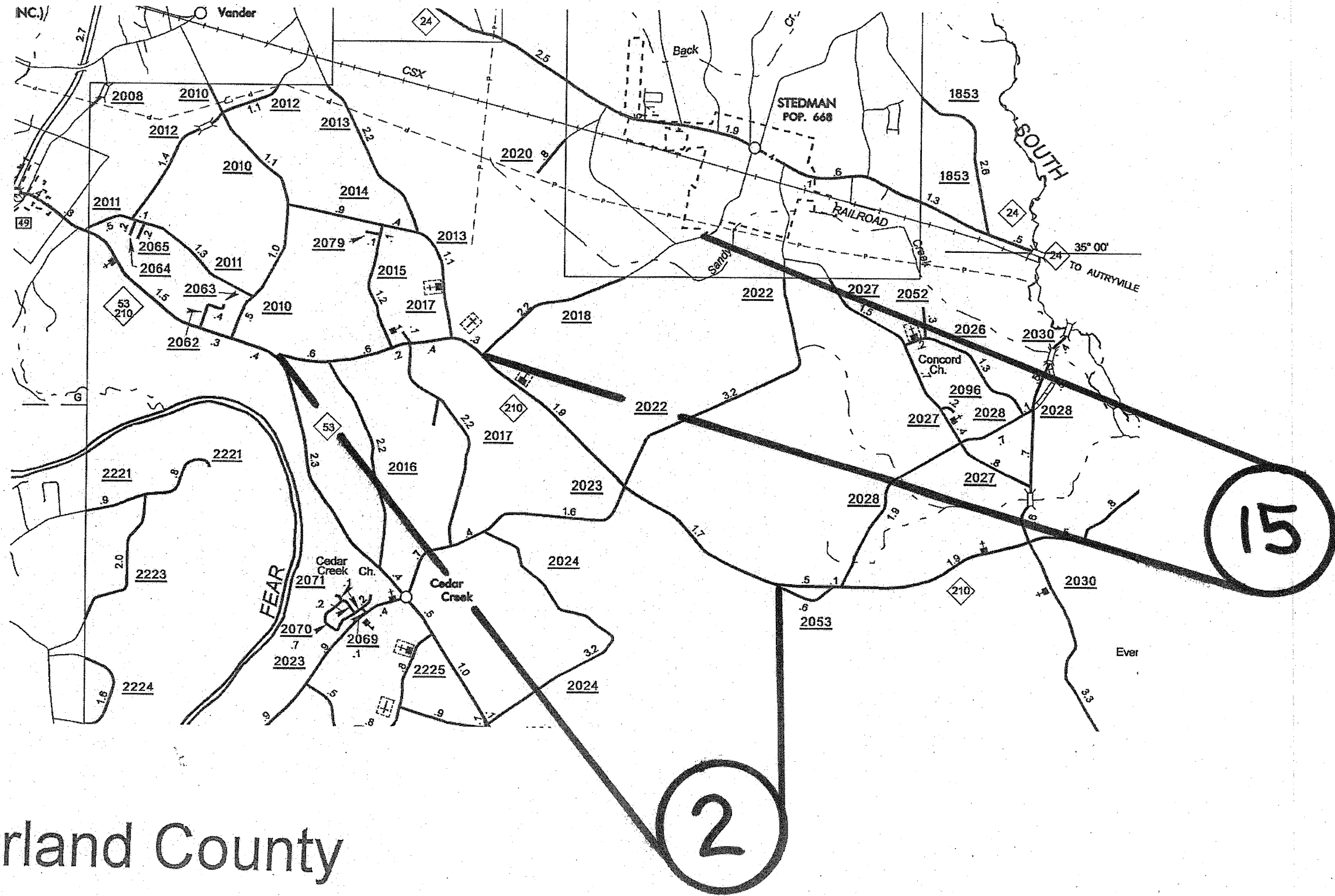


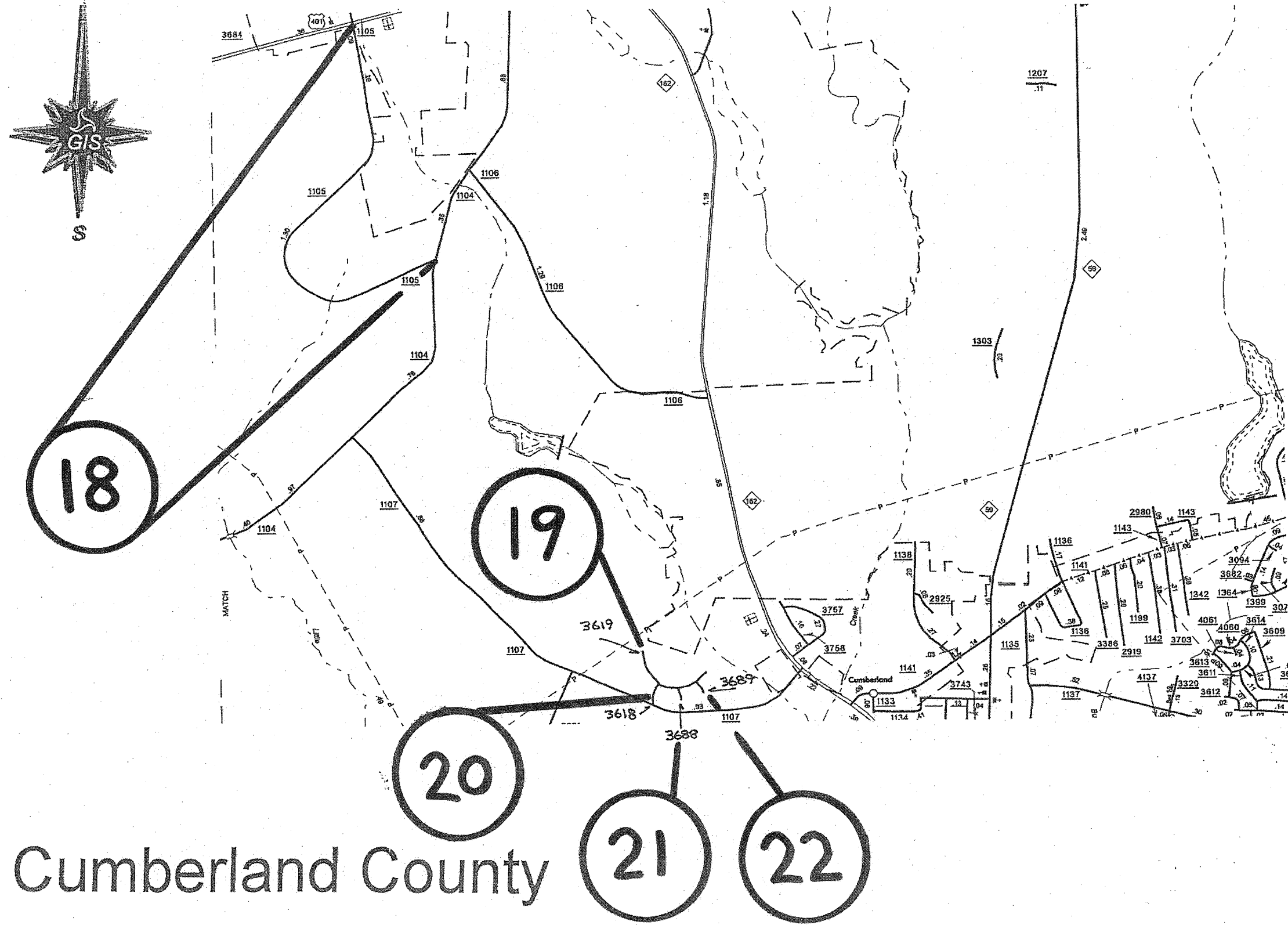
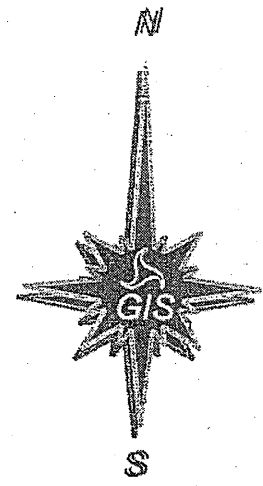
Cumberland County



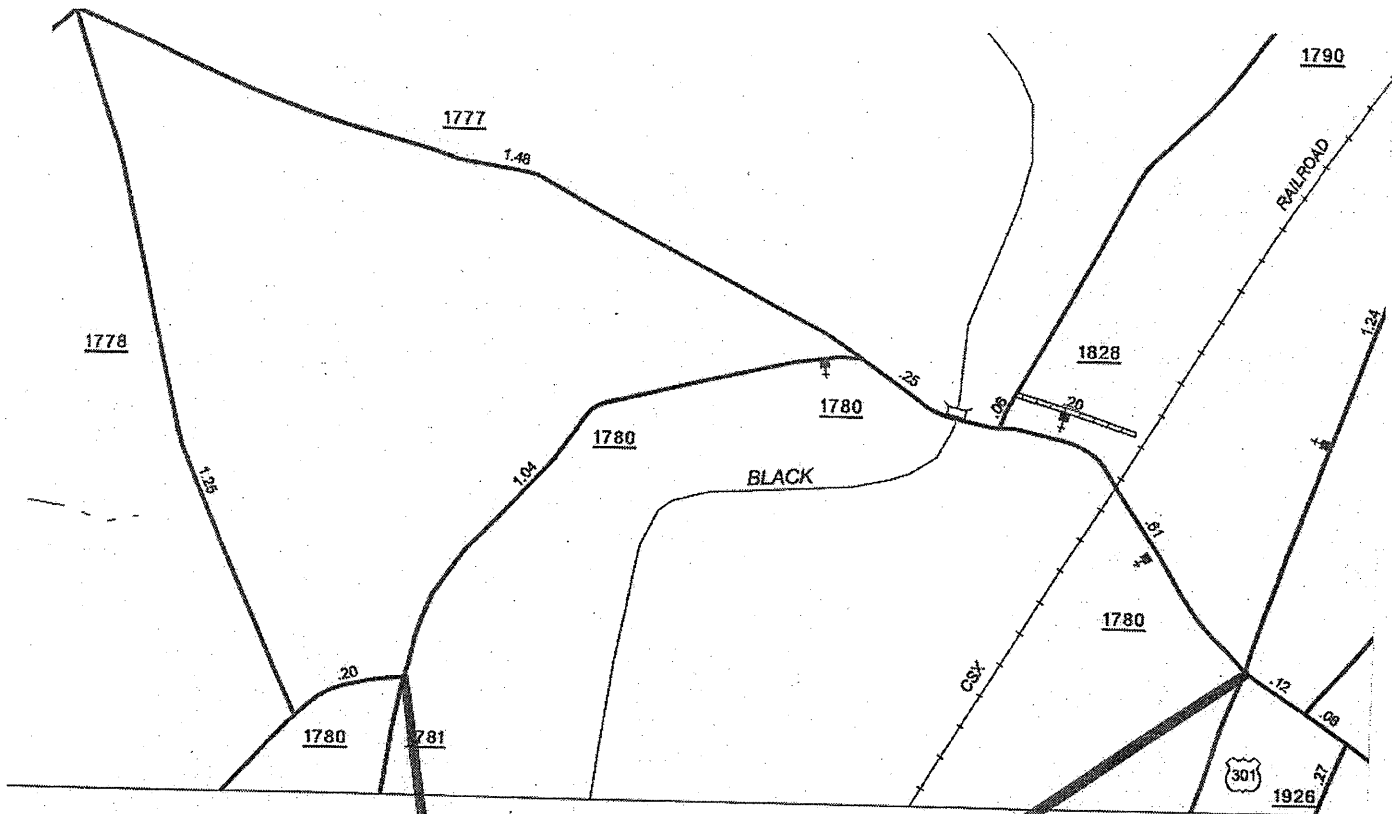
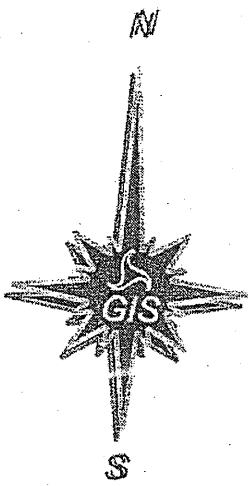
Cumberland County



Cumberland County



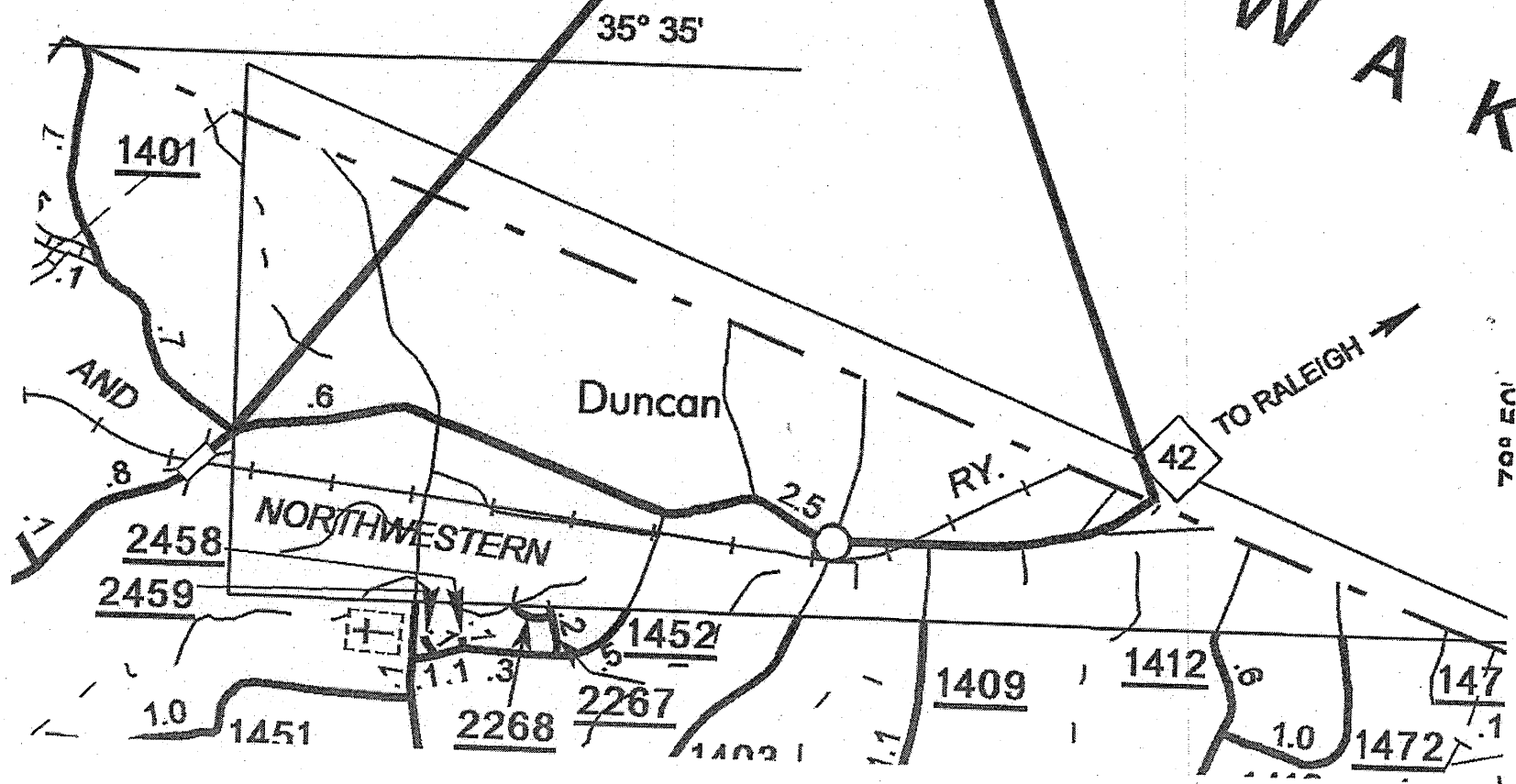
Cumberland County



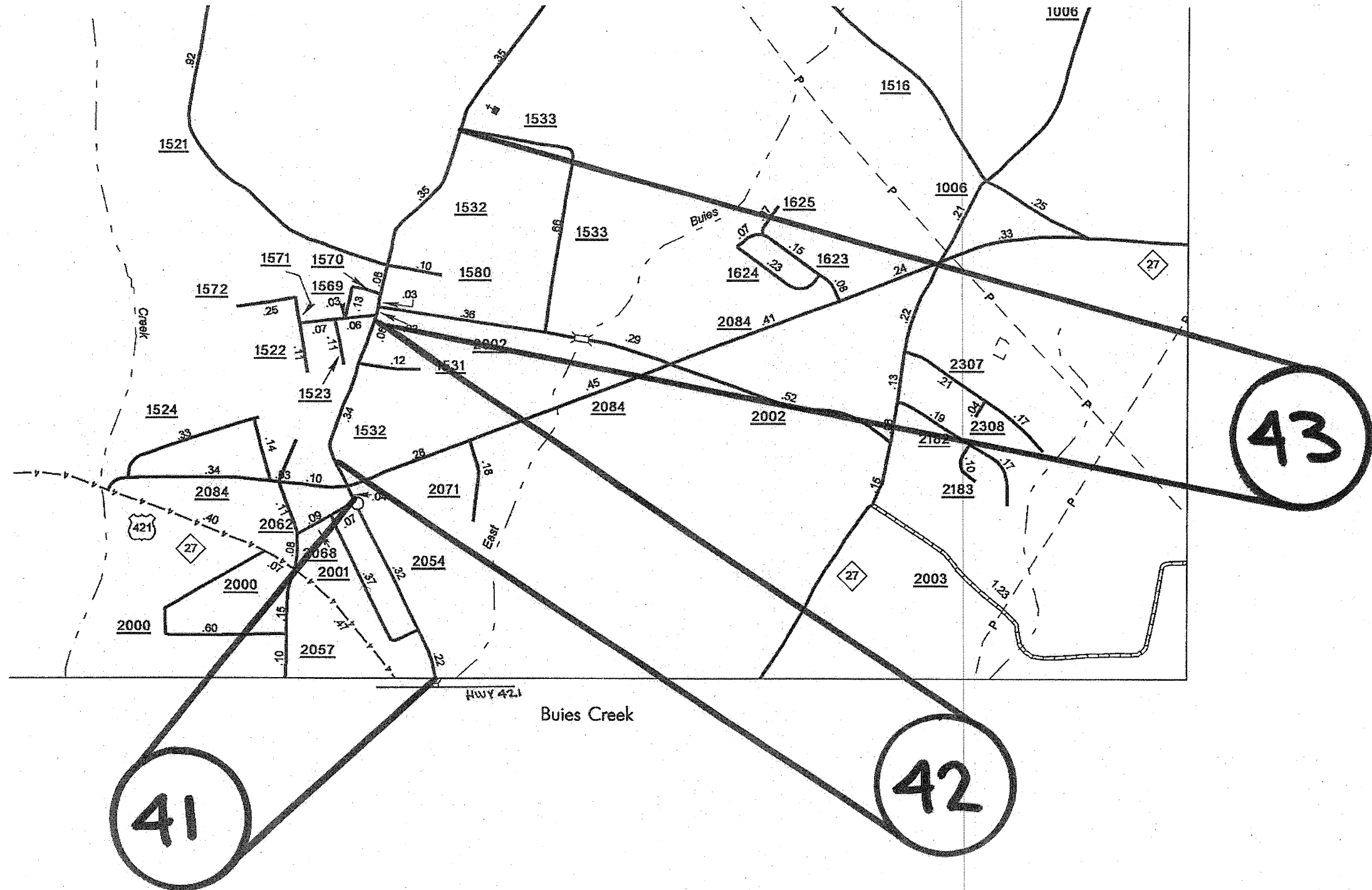
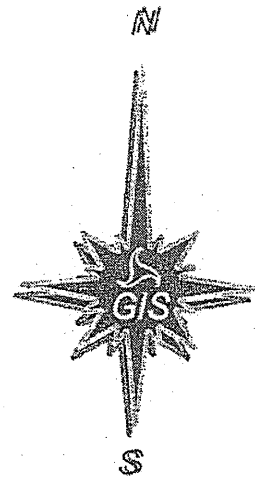
38

5

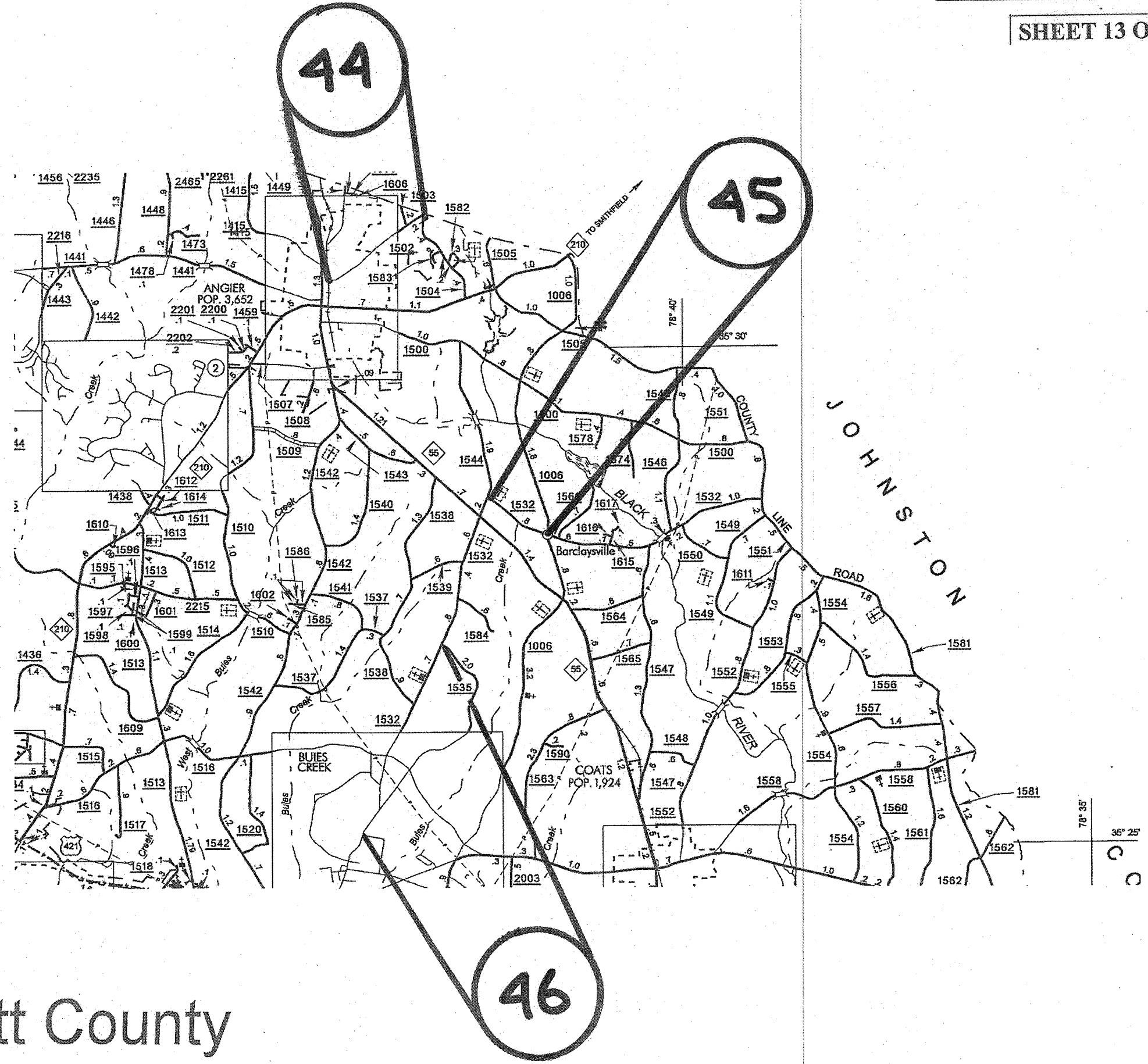
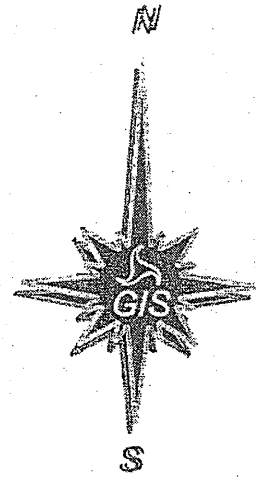
W A K



Harnett County

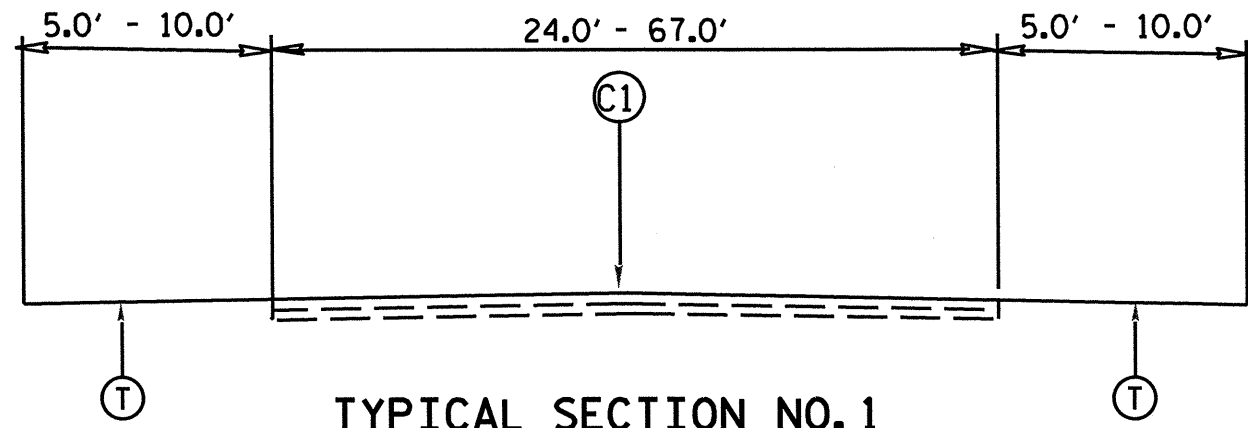


Harnett County

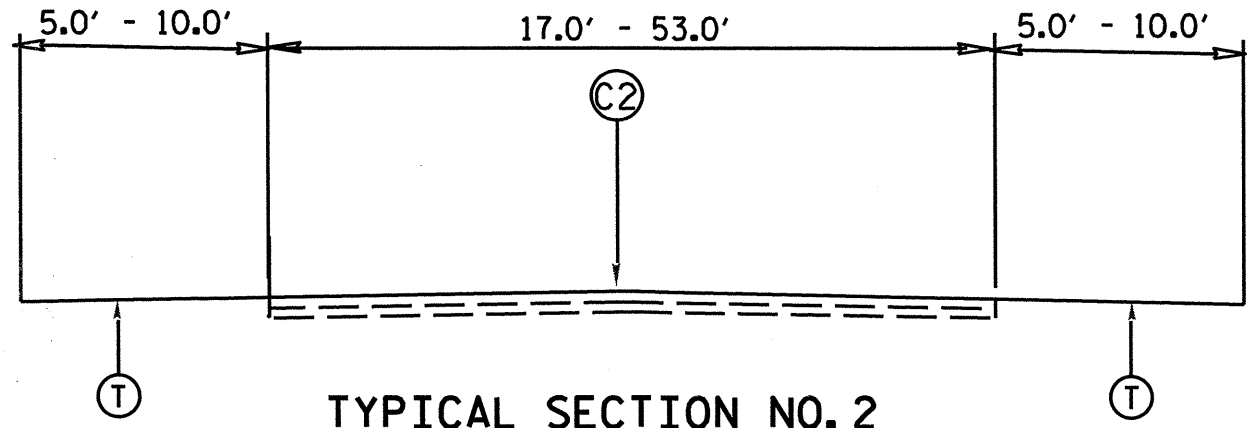


Harnett County

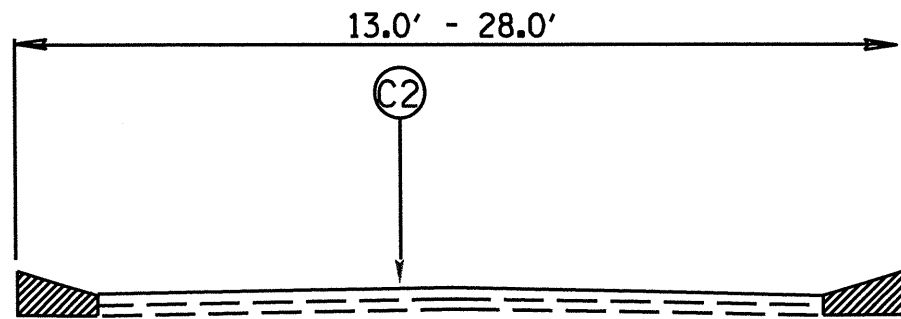
| PAVEMENT SCHEDULE | |
|-------------------|---|
| C1 | PROP. APPROX. 1.50" ASPHALT CONCRETE SURFACE COURSE, TYPE S9.5B, AT AN AVERAGE RATE OF 168 LBS. PER SQ. YD. |
| C2 | PROP. APPROX. 1.50" ASPHALT CONCRETE SURFACE COURSE, TYPE SF9.5A, AT AN AVERAGE RATE OF 165 LBS. PER SQ. YD. |
| C3 | PROP. APPROX. 1.00" ASPHALT CONCRETE SURFACE COURSE, TYPE S4.75A, AT AN AVERAGE RATE OF 100 LBS. PER SQ. YD. |
| D1 | PROP. APPROX. 4.00" ASPHALT CONCRETE INTERMEDIATE COURSE, TYPE I19.0B, AT AN AVERAGE RATE OF 456 LBS. PER SQ. YD. |
| M1 | MILLING AT A DEPTH OF 0" TO 1.50" TO BE MILLED TO A DEPTH OF 1.50" BELOW THE GUTTER AT EP AS DIRECTED BY THE ENGINEER. |
| T | SHOULDER RECONSTRUCTION TO BE DONE BY STATE FORCES. |



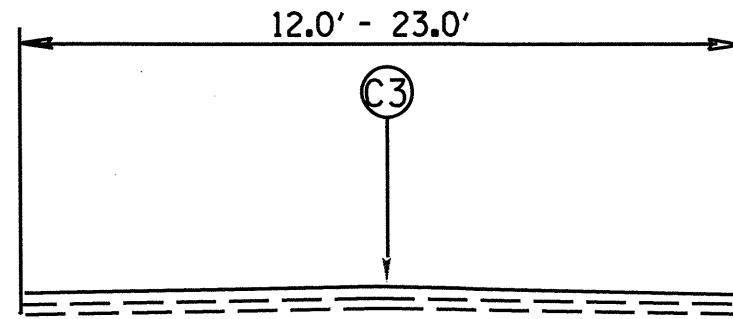
TYPICAL SECTION NO. 1



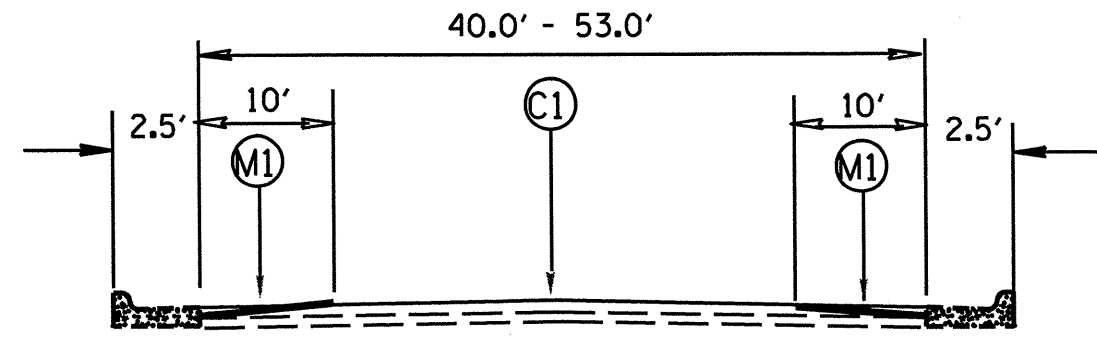
TYPICAL SECTION NO. 2



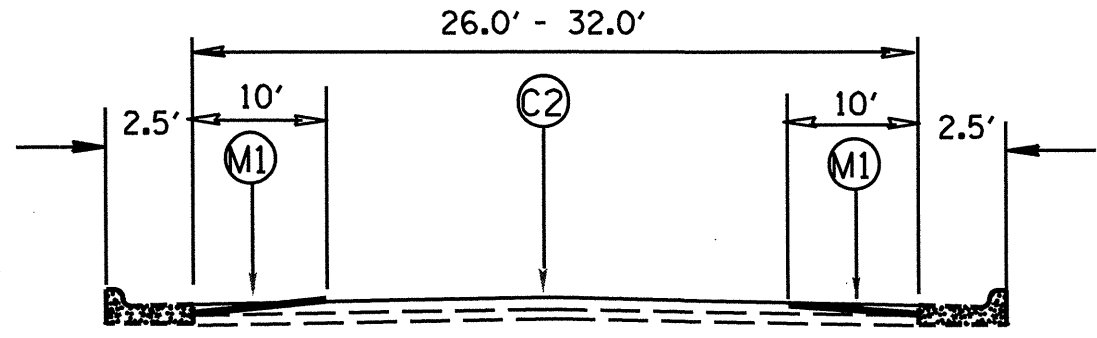
TYPICAL SECTION NO. 3



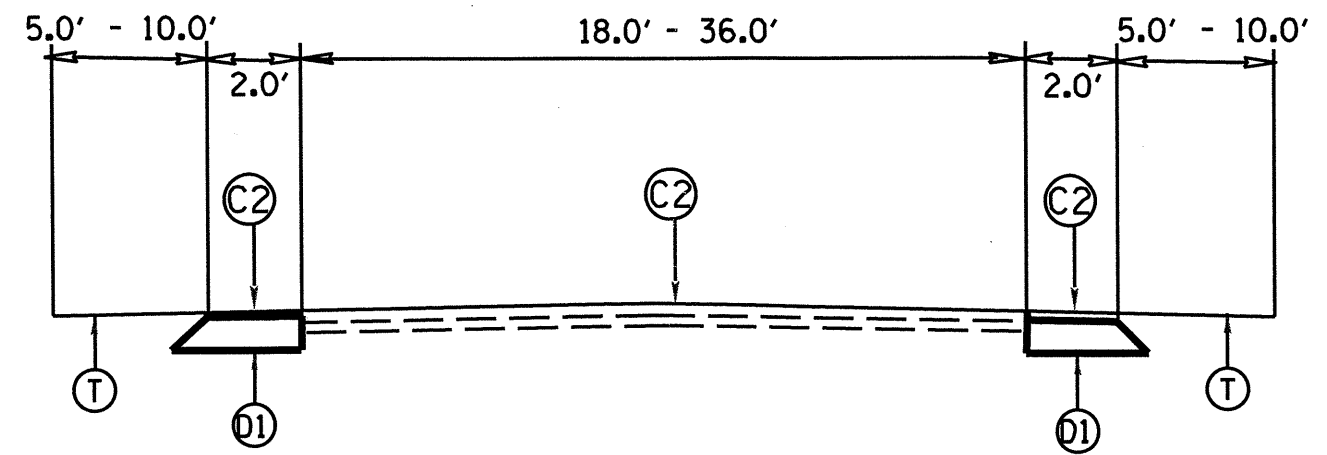
TYPICAL SECTION NO. 4



TYPICAL SECTION NO. 5

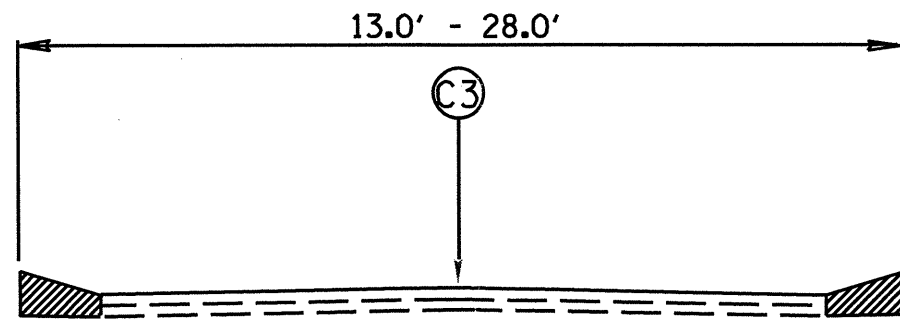


TYPICAL SECTION NO. 7

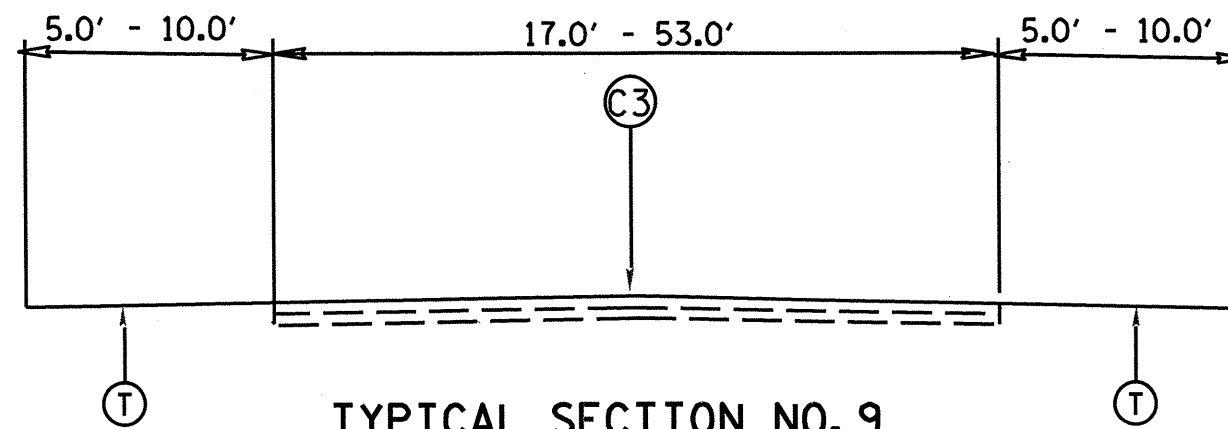


TYPICAL SECTION NO. 6

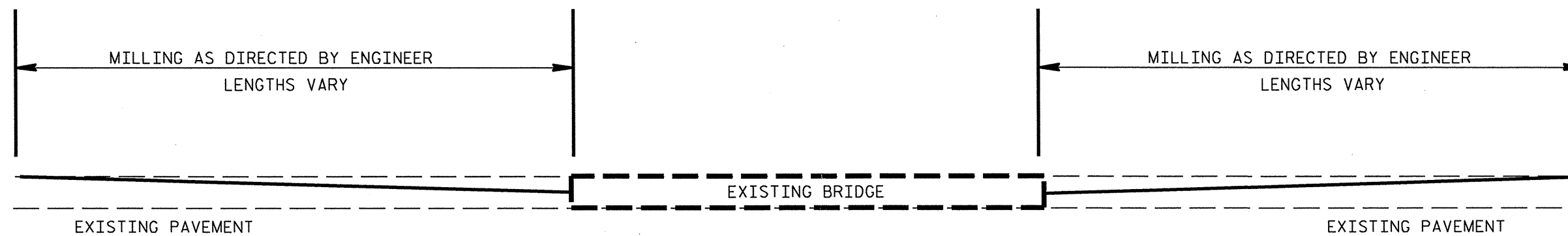
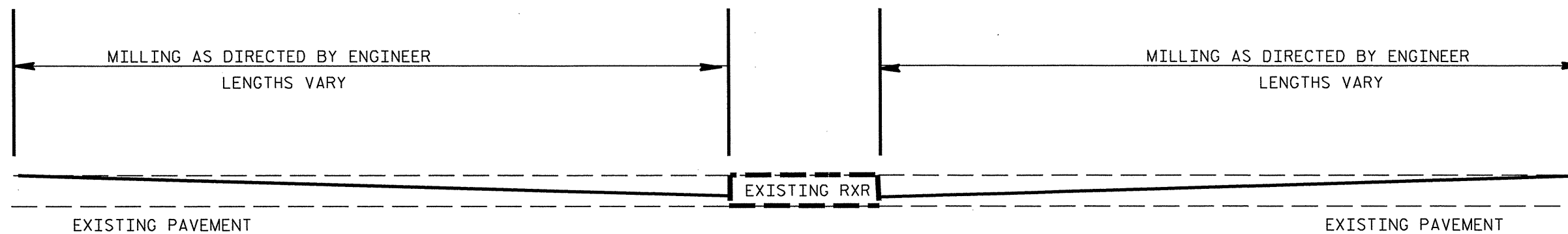
* PAVEMENT EDGE SLOPES ARE 1:1 UNLESS SHOWN OTHERWISE  1:1



TYPICAL SECTION NO. 8



TYPICAL SECTION NO. 9



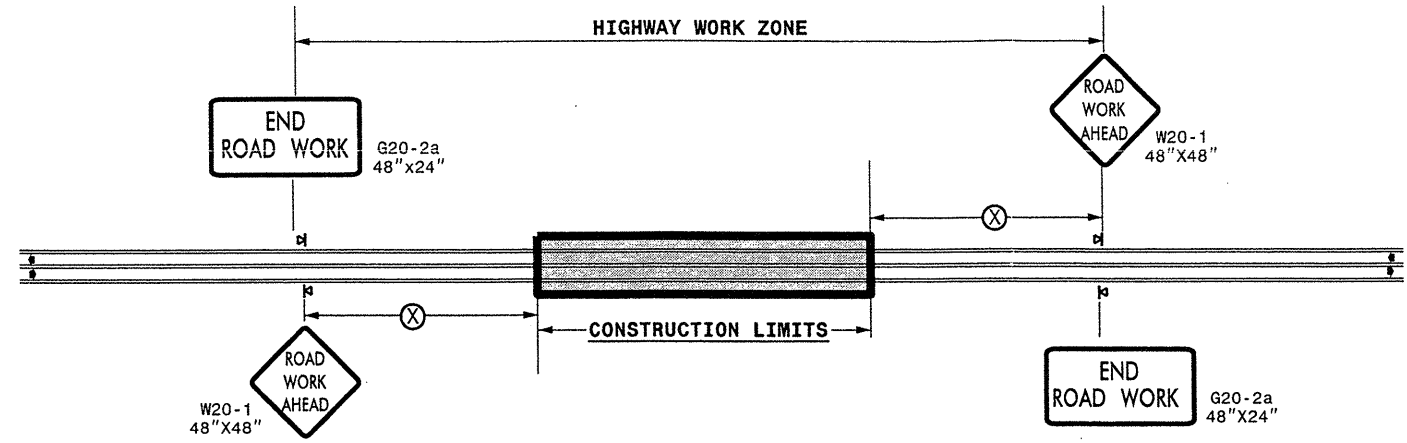
BRIDGE AND RXR MILLING TYPICAL

22-DEC-2010 13:45
 \\001\dfs\root\groups-wz\ccc\M&S Division\Share\Resur\Facing\2010\Resur\Facing\2010\Easter\2011\Div06\C202705A-D-6CR.10261.70x4-2woyundivurbfw
 okpatel_AT_WZTC244748

WBS ELEMENTS: 6CR.10261.70, 6CR.10431.70,
6CR.20261.70 & 6CR.20431.70

| | |
|--|--------------------|
| PROJ. REFERENCE NO. SEE TO THE LEFT | SHEET NO. TCP-1 |
|--|--------------------|

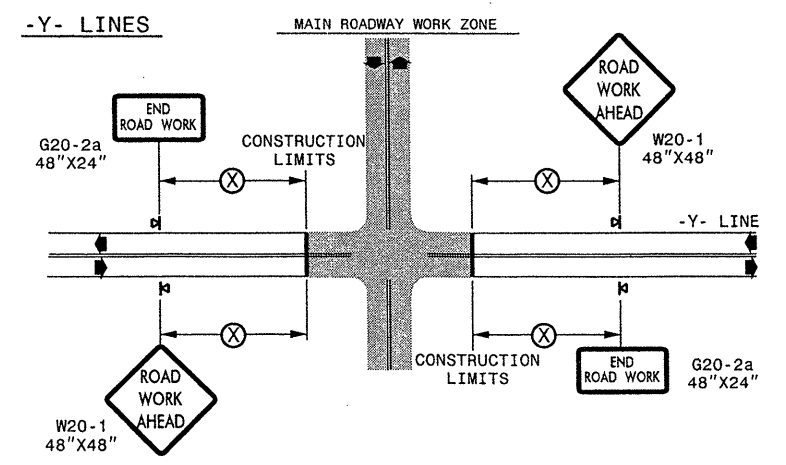
TWO-WAY UNDIVIDED ** (L-LINES)



| POSTED SPEED LIMIT (M.P.H.) | RECOMMENDED MINIMUM SIGN SPACING |
|-----------------------------|----------------------------------|
| ≤ 50 | 500' |
| ≥ 55 | 1000' |

STATE OF NORTH CAROLINA
 DEPT. OF TRANSPORTATION
 DIVISION OF HIGHWAYS
 RALEIGH, N.C.

ROADWAYS INTERSECTING ALONG 2 WAY UNDIVIDED WORK ZONE (Y-LINES)



GENERAL NOTES

- USE FLUORESCENT ORANGE SHEETING (TYPE VII OR HIGHER) ON ALL ADVANCE WORK ZONE SIGNS.
- DO NOT INSTALL ADVANCE WARNING SIGNS MORE THAN 3 DAYS PRIOR TO BEGINNING OF WORK.
- ALL SIGN SPACING DIMENSIONS ARE APPROXIMATE, FIELD ADJUST AS NECESSARY OR AS DIRECTED.
- USE PORTABLE WORK ZONE SIGNS ONLY WITH PORTABLE WORK ZONE SIGN STANDS SPECIFICALLY DESIGNED FOR ONE ANOTHER. PORTABLE WORK ZONE SIGNS MAY BE ROLL UP OR APPROVED COMPOSITE.
- PROVIDE PORTABLE WORK ZONE SIGN STANDS, PORTABLE SIGNS AND SIGN SHEETING WHICH ARE LISTED ON THE NORTH CAROLINA DEPARTMENT OF TRANSPORTATION'S APPROVED PRODUCT LIST OR ACCEPTED AS TRAFFIC QUALIFIED BY THE TRAFFIC CONTROL UNIT.
- ** TWO-WAY UNDIVIDED ADVANCE WARNING SIGN CONFIGURATION MAY BE USED ON URBAN MULTI-LANE FACILITIES WHERE CONDITIONS LIMIT THE USE OF DUAL MOUNTED SIGNS AS DETERMINED BY THE ENGINEER.

LEGEND

PORTABLE SIGN
 DIRECTION OF TRAFFIC FLOW

**DETAIL DRAWING
 FOR TWO-WAY UNDIVIDED
 WORK ZONE WARNING SIGNS**





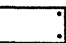
SHEET 1 OF 1

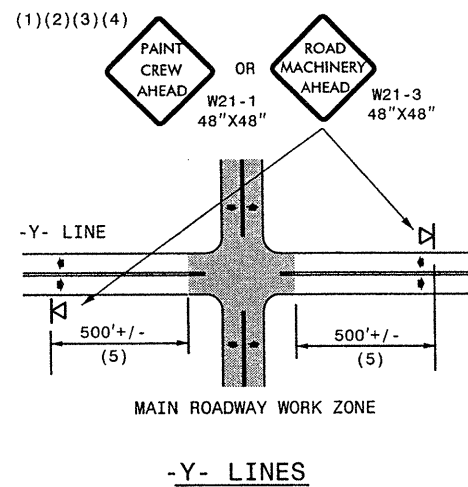
| APPROVED: _____ DATE: _____ | DETAIL DRAWING FOR TWO-WAY UNDIVIDED ADVANCED WORK ZONE WARNING SIGNS | | | | |
|-----------------------------|--|-----------|--|--|--|
| SEAL | SCALE: NONE | | | | |
| | DATE: 12/10 | | | | |
| | DWG. BY: _____ | | | | |
| | DESIGN BY: _____ | | | | |
| REVIEWED BY: _____ | <table border="1" style="width: 100%;"> <thead> <tr> <th>REVISIONS</th> </tr> </thead> <tbody> <tr> <td> </td> </tr> <tr> <td> </td> </tr> <tr> <td> </td> </tr> </tbody> </table> | REVISIONS | | | |
| REVISIONS | | | | | |
| | | | | | |
| | | | | | |
| | | | | | |

GENERAL NOTES

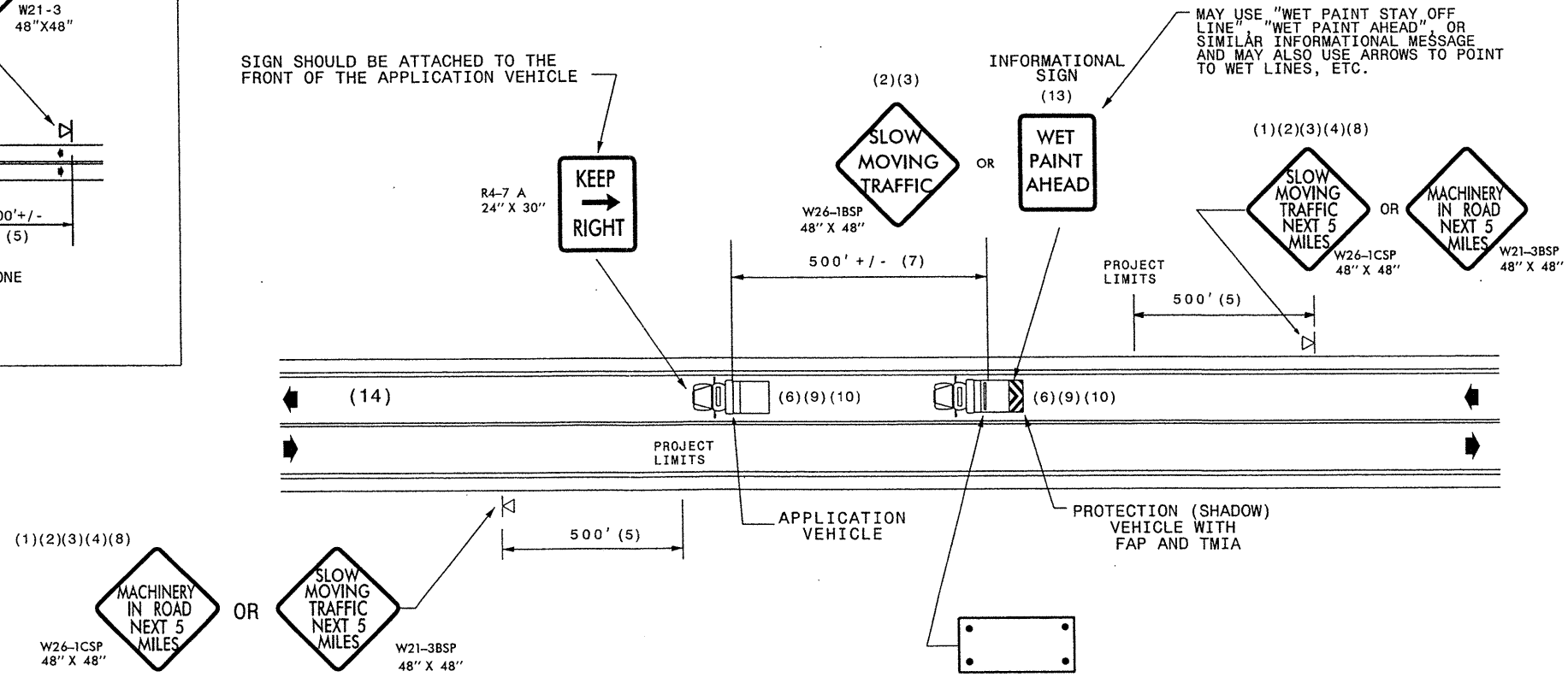
- (1) THE FOLLOWING OPTIONS MAY BE USED FOR ADVANCE WARNING SIGNS:
 - A. TRUCK MOUNTED SIGNS
 - B. TRUCK MOUNTED CHANGEABLE MESSAGE SIGN (CMS)
 - C. GROUND MOUNTED ADVANCE WARNING SIGNS (MUST CIRCLE TO PICK UP SIGNS)
 - D. GROUND MOUNTED CHANGEABLE MESSAGE SIGN (CMS) (MUST USE CIRCLE TO PICK UP SIGNS)
- (2) ALL ADVANCE WARNING SIGNS MUST BE 48" X 48" WITH FLUORESCENT ORANGE TYPE VII, VIII OR IX SHEETING. IF SPACE LIMITATIONS ON SHOULDER PROHIBIT A 48" X 48" SIGN, A SMALLER SIGN CAN BE USED WITH APPROVAL FROM ENGINEER.
- (3) SIGNS ON VEHICLES SHOULD BE MOUNTED A MINIMUM OF ONE (1) FOOT FROM THE GROUND AND SHOULD NOT BLOCK THE MOTORIST'S SIGHT OF THE FLASHING ARROW PANEL AND/OR LIGHTBAR.
- (4) GROUND MOUNTED ADVANCED WARNING SIGNS SHOULD BE MOUNTED A MINIMUM OF ONE (1) FOOT FROM THE GROUND TO BOTTOM OF SIGN.
- (5) SIGN SPACING SHOULD BE ADJUSTED FOR HORIZONTAL AND VERTICAL CURVES, ETC. TO IMPROVE SIGHT DISTANCES.
- (6) ADDITIONAL VEHICLES SHOULD BE USED IN WORK CARAVAN TO FACILITATE DRYING OF PAVEMENT MARKING MATERIAL (TMIA'S ARE OPTIONAL ON THESE ADDITIONAL VEHICLES). HOWEVER, THE FIRST VEHICLE MOTORISTS SEE IN THE TRAVEL LANE SHALL HAVE A TMIA.
- (7) ADJUST DISTANCE AS NEEDED TO PREVENT MOTORISTS FROM ENTERING SPACE BETWEEN THE APPLICATION AND PROTECTION VEHICLE. DISTANCE CAN BE LENGTHENED TO ACCOMODATE SIGHT DISTANCE NEEDS.
- (8) ROUND UP MILEAGE TO NEXT WHOLE MILE. WORK ZONE SHOULD NOT EXCEED FIVE (5) MILES IN LENGTH.
- (9) RADIO COMMUNICATION BETWEEN VEHICLES IS REQUIRED.
- (10) USE OF A LIGHT BAR ON ALL VEHICLES IS PREFERRED, BUT A ROTATING BEACON MAY BE USED INSTEAD.
- (11) IF WORK IS PERFORMED AT NIGHT, THE WORK AREA MUST BE ILLUMINATED WITH MACHINE AND/OR TOWER LIGHTS AS APPROVED BY THE ENGINEER.
- (12) ALL TRAFFIC CONTROL DEVICES WILL BE CONSIDERED INCIDENTAL TO THE PAY ITEMS FOR PAVEMENT MARKING AND MARKERS.
- (13) INFORMATIONAL SIGNS SHOULD BE ACTIVITY SPECIFIC, i.e. "PAINT CREW IN ROAD". SIGNS MAY BE RECTANGULAR OR DIAMOND SHAPE. SIGN SIZE SHOULD BE BASED ON THE MOTORIST ABILITY TO RECOGNIZE SIGN WHEN TRAVELING FIVE (5) MILES ABOVE POSTED SPEED LIMIT.
- (14) IF A LEAD VEHICLE IS ADDED TO OPERATION, IT SHOULD HAVE THE SAME ADVANCE WARNING SIGNS AS THE APPLICATION VEHICLE SHOWN BELOW.

LEGEND

-  PORTABLE SIGN. SIGNS MUST BE NCHRP-350 AND NCDOT APPROVED.
-  DIRECTION OF TRAFFIC FLOW
-  APPLICATION VEHICLE WITH LIGHT BAR
-  PROTECTION VEHICLE WITH TRUCK MOUNTED IMPACT ATTENUATOR (TMIA) AND LIGHT BAR (SEE ROADWAY STANDARD NO. 1165.01). TMIA MUST BE NCHRP-350 TEST LEVEL 3 (60+MPH) APPROVED.
-  FLASHING ARROW PANEL, TYPE "B" (60"X30" MIN.), "CAUTION MODE"



SIGN SHOULD BE ATTACHED TO THE FRONT OF THE APPLICATION VEHICLE

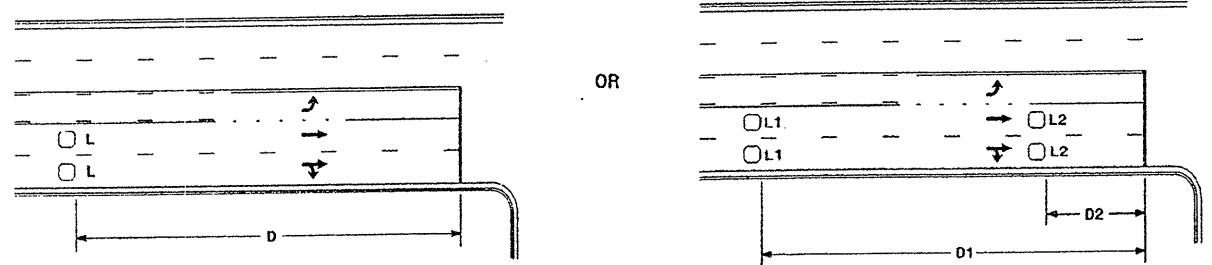


MOVING OPERATION CARAVAN

(OPERATIONS TRAVELING 3 MPH OR FASTER)
PLACING PAVEMENT MARKING OR MARKERS
ON TWO-LANE TWO-WAY ROADWAYS

DRAWING NUMBER 6
IMPLEMENTATION DATE: 07/01/97
REVISED: 11/03/04

High Speed Detection [≥40 mph (64 km/hr)]



| Speed Limit mph (km/hr) | D ft (m) |
|----------------------------|-------------|
| 40 (64) | 250 (75) |
| 45 (72) | 300 (90) |
| 50 (80) | 355 (110) |
| 55 (88) | 420 (130) |

L = 6ft X 6ft (1.8m X 1.8m)
Wired in series for TS1
Controllers
Wired separately for TS2,
170, and 2070L Controllers

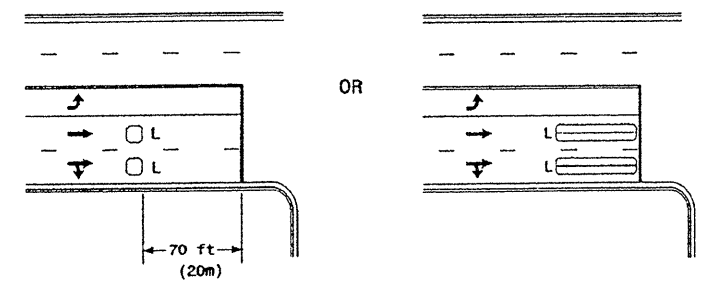
| Speed Limit mph (km/hr) | D1 ft (m) | D2 ft (m) |
|----------------------------|--------------|--------------|
| 40 (64) | 250 (75) | 80 (25) |
| 45 (72) | 300 (90) | 90 (27) |
| 50 (80) | 355 (110) | 100 (30) |
| 55 (88) | 420 (130) | 110 (35) |

L1 = 6ft X 6ft
(1.8m X 1.8m)
Wired in series
L2 = 6ft X 6ft
(1.8m X 1.8m)
Wired in series

Volume Density Operation

"Stretch" Operation

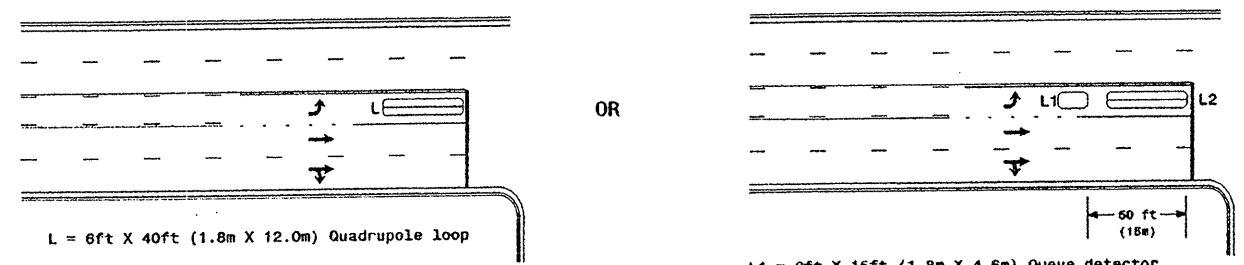
Low Speed Detection [≤35 mph (56 km/hr)]



L = 6ft X 6ft (1.8m X 1.8m)
Wired in series

L = 6ft X 40ft (1.8m X 12.0m)
Quadrupole loop, wired separately

Left Turn Lane Detection



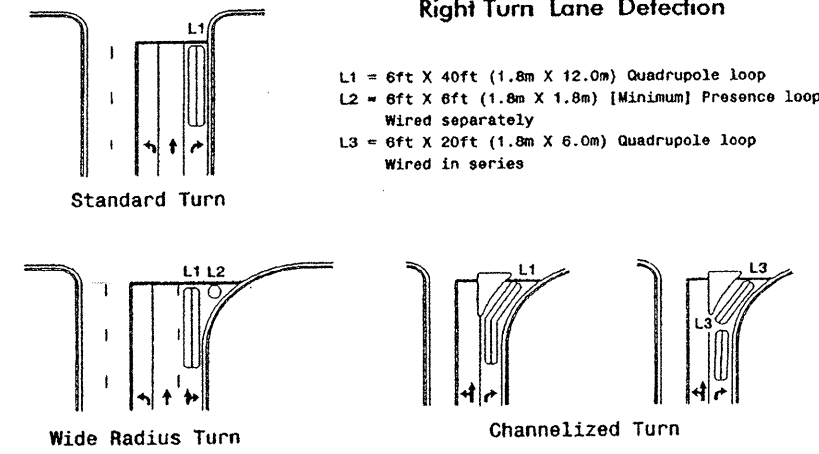
L = 6ft X 40ft (1.8m X 12.0m) Quadrupole loop

L1 = 6ft X 15ft (1.8m X 4.6m) Queue detector
L2 = 6ft X 40ft (1.8m X 12.0m) Quadrupole loop

Presence Loop Detection

Queue Loop Detection

Right Turn Lane Detection

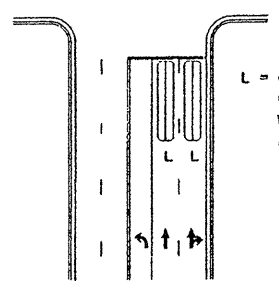


L1 = 6ft X 40ft (1.8m X 12.0m) Quadrupole loop
L2 = 6ft X 6ft (1.8m X 1.8m) [Minimum] Presence loop
Wired separately
L3 = 6ft X 20ft (1.8m X 6.0m) Quadrupole loop
Wired in series

Wide Radius Turn

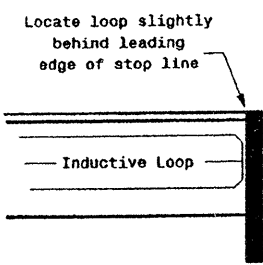
Channelized Turn

Side Street Detection



L = 6ft X 40ft (1.8m X 12.0m)
Quadrupole loop
Wired to separate
detectors/channels

Presence Loop Placement at Stop Lines



Note:
Loop may be located in advance
of stop line when stop line is
greater than 15' (4.5m) from edge
of intersecting roadway; or, when
loop detects a permissive or
protected/permissive left turn.

Recommended Number of Turns

Single 6' X 6' (1.8m X 1.8m)
loop (wired separately):

| Length of Lead-in ft (m) | Number of Turns |
|--------------------------------|--------------------|
| < 250 (75) | 3 |
| 250-375 (75-115) | 4 |
| 375-525 (115-160) | 5 |
| > 525 (160) | 6 |

Quadrupole loops: Use 2-4-2 turns
6' X 15' (1.8m X 4.6m) Loops:
Lead-in < 150' (45 m), use 2 turns
Lead-in > 150' (45 m), use 3 turns

Typical Loop Locations

| | |
|------------------------------|----------------|
| PLM DATE: JUNE 2006 | REVIEWED BY: |
| PREPARED BY: P. L. ALEXANDER | REVIEWED BY: |
| SCALE: N/A | DATE: 12/15/06 |
| SIGNATURE: P. L. Alexander | DATE: 12/15/06 |

12-06C-006 11/02
electrical & turn, in: detcomphysic2006.dgn
12/15/06

STATE OF NORTH CAROLINA
 DEPT. OF TRANSPORTATION
 DIVISION OF HIGHWAYS
 RALEIGH, N.C.

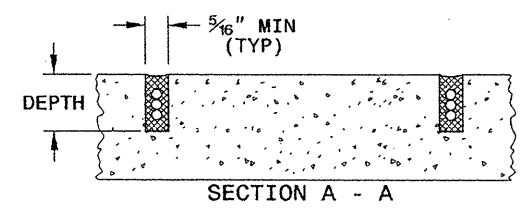
11-08

INDUCTIVE DETECTION LOOPS
 ENGLISH DETAIL DRAWING FOR

SHEET 1 OF 3
 1725D01

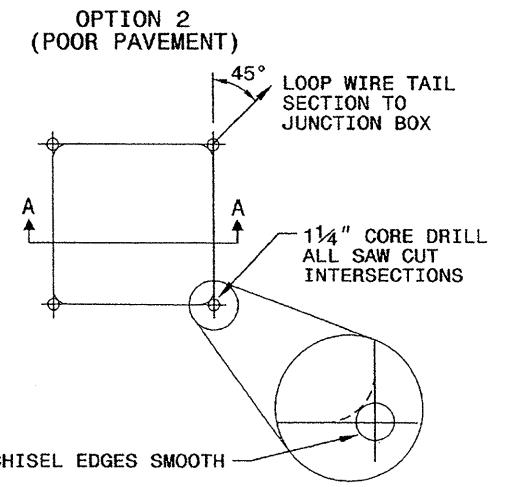
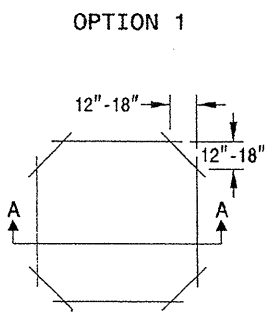
SAW SLOT DEPTH CHART

| DEPTH (IN) | NO. OF WIRE TURNS | | | | |
|------------|-------------------|-----|-----|-----|-----|
| | 2 | 3 | 4 | 5 | 6 |
| CONCRETE | 2.0 | 2.0 | 2.5 | 2.5 | 3.0 |
| ASPHALT | 2.0 | 2.5 | 3.0 | 3.0 | 3.0 |

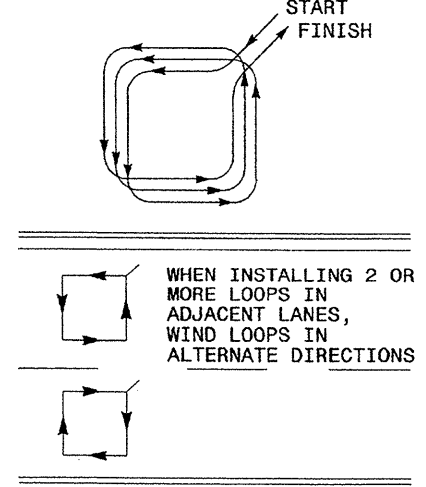


CONVENTIONAL 4-SIDED LOOP

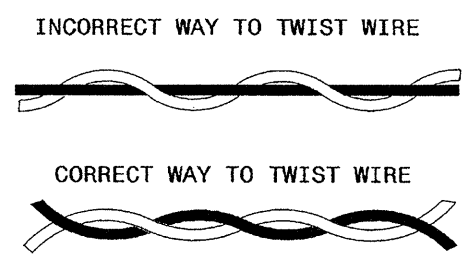
SAW CUT OPTIONS



LOOP WINDING METHOD



LOOP WIRE TWISTING METHOD

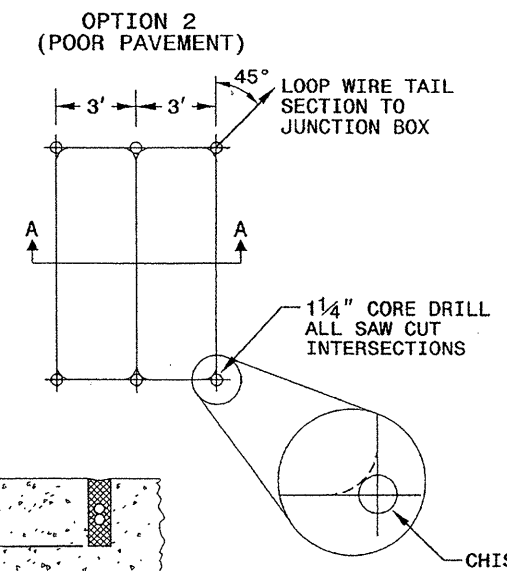
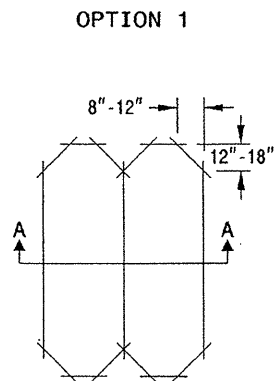


NOTES

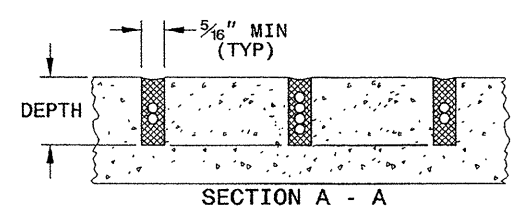
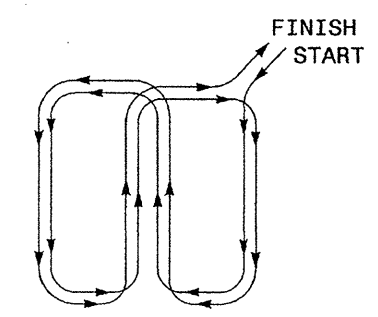
1. OVERLAP SAW CUTS AT CORNERS AND INTERSECTION POINTS TO ENSURE UNIFORM SAW SLOT DEPTH.
2. MAINTAIN 12" SPACING BETWEEN LOOP WIRE TAIL SECTIONS.
3. WIRE LOOPS CONNECTED TO THE SAME DETECTOR CHANNEL IN SERIES.
4. LOCATE LOOPS IN CENTER OF LANES UNLESS OTHERWISE SHOWN ON PLANS OR APPROVED BY ENGINEER.

QUADRUPOLE LOOP

SAW CUT OPTIONS



LOOP WINDING METHOD



DEPTH IS 2.5" FOR CONCRETE AND 3.0" FOR ASPHALT

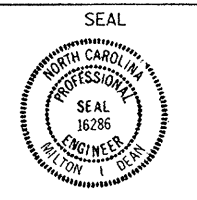
STATE OF NORTH CAROLINA
 DEPT. OF TRANSPORTATION
 DIVISION OF HIGHWAYS
 RALEIGH, N.C.

11-08

INDUCTIVE DETECTION LOOPS
 ENGLISH DETAIL DRAWING FOR

SHEET 1 OF 3
 1725D01

See Plate for Title



Signature: Hilton Dean
 Date: 1/24/08

750 N. Greenfield Parkway
 Garner, NC 27529

24-100-2008_08:28
 c:\work\11\1725D01\1725D01.dgn
 1/24/08 11:10

STATE OF NORTH CAROLINA
 DEPT. OF TRANSPORTATION
 DIVISION OF HIGHWAYS
 RALEIGH, N.C.

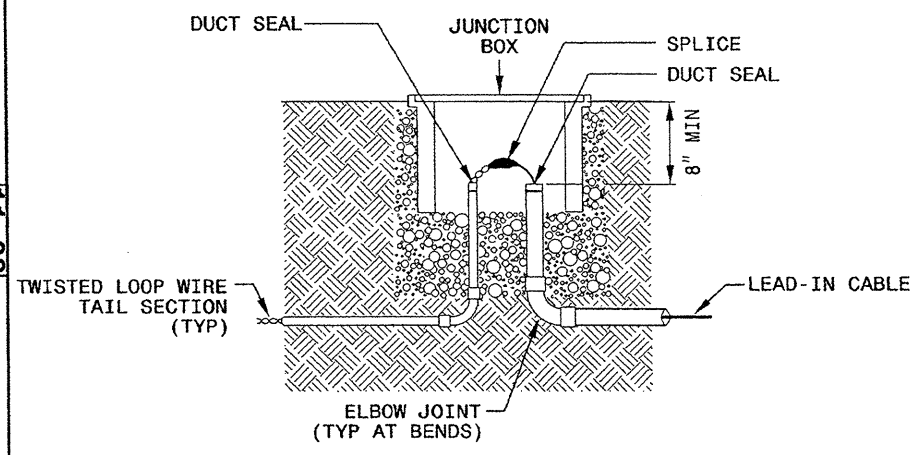
11-08

ENGLISH DETAIL DRAWING FOR
INDUCTIVE DETECTION LOOPS
 LOOP WIRE DETAILS

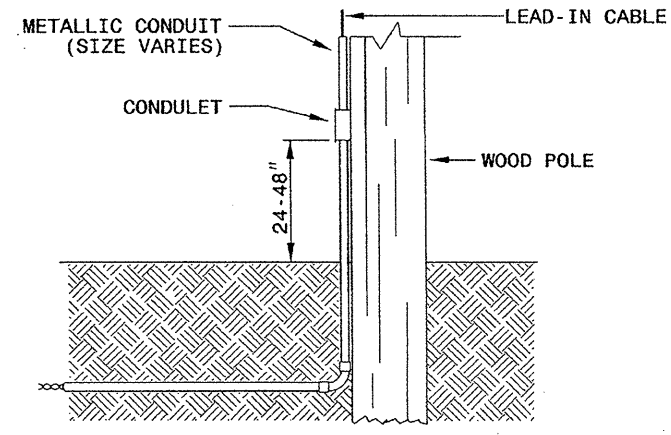
SHEET 2 OF 3
1725D01

LOOP WIRE SPLICE POINT DETAILS

LOOP WIRE AT JUNCTION BOX



LOOP WIRE AT POLE

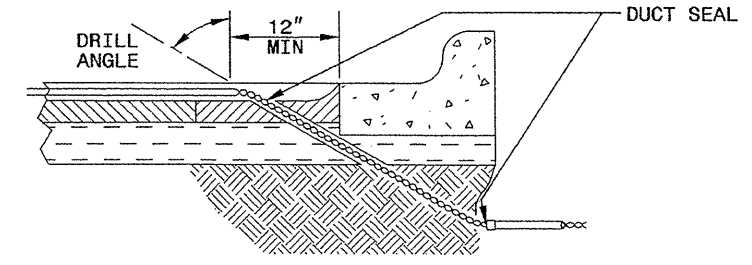


NOTE

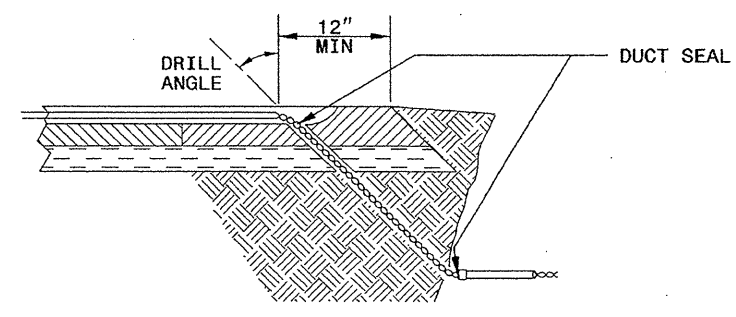
SPLICE ALL LOOP WIRE TAIL SECTIONS/LEAD-IN CABLE IN JUNCTION BOXES OR APPROVED CONDULETS.

LOOP WIRE PAVEMENT EDGE DETAILS

LOOP WIRE AT CURB & GUTTER SECTION



LOOP WIRE AT PAVEMENT SECTION



NOTES

1. DO NOT EXCAVATE UNDER CURB AND GUTTER SECTIONS FOR CONDUIT INSTALLATION.
2. TWIST LOOP WIRE TAIL SECTIONS FROM WHERE LOOP WIRE TAIL LEAVES SAW CUT TO JUNCTION BOX, INCLUDING THROUGH CONDUIT.
3. BEFORE SEALING LOOPS, INSTALL DUCT SEAL WHERE LOOP WIRE TAIL SECTION LEAVES SAW CUT IN PAVEMENT AND AT ENTRANCE OF CONDUIT TO JUNCTION BOX.

STATE OF NORTH CAROLINA
 DEPT. OF TRANSPORTATION
 DIVISION OF HIGHWAYS
 RALEIGH, N.C.

11-08

ENGLISH DETAIL DRAWING FOR
INDUCTIVE DETECTION LOOPS
 LOOP WIRE DETAILS

SHEET 2 OF 3
1725D01

See Plate for Title

Prepared in the Offices of:

750 N. Greenfield Parkway
 Garner, NC 27529

SEAL

Milton L. Dean 11/24/08
 SIGNATURE DATE

24-Nov-2008 09:29
 g:\work_files\16840-sf\orders\plate sheets\1725D01\02.amy\2301.dgn
 em111118

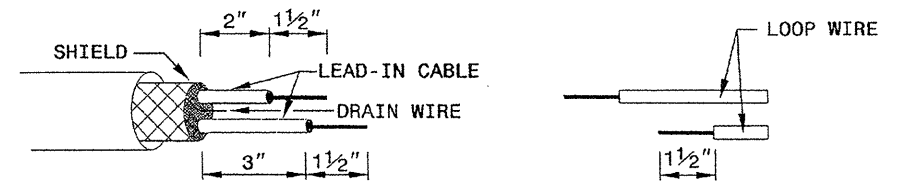
STATE OF
 NORTH CAROLINA
 DEPT. OF TRANSPORTATION
 DIVISION OF HIGHWAYS
 RALEIGH, N.C.

11-08

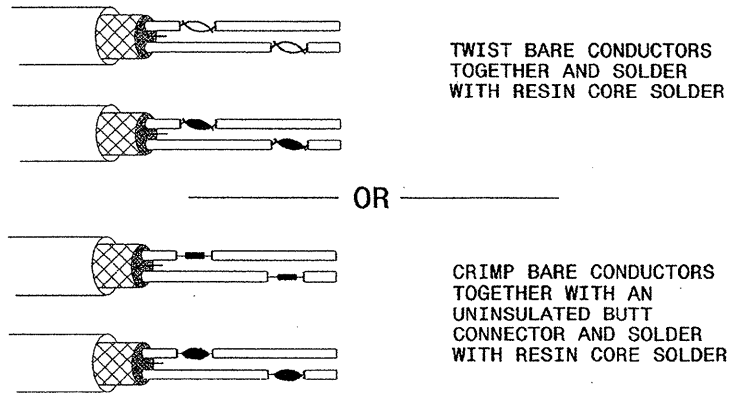
ENGLISH DETAIL DRAWING FOR
INDUCTIVE DETECTION LOOPS
 SPLICING FOR LEAD-IN CABLE AND LOOP WIRE

SHEET 3 OF 3
1725D01

STEP 1. STRIP LOOP WIRE AND LEAD-IN CABLE

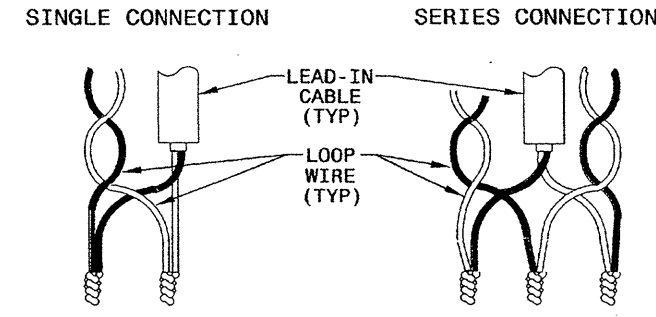


STEP 2. CONNECT AND SOLDER

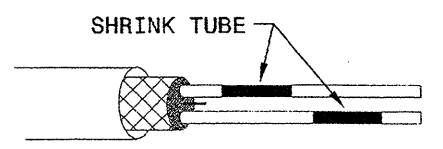


BOND SHIELD DRAIN WIRE AT SPLICE SECTIONS (DO NOT GROUND)

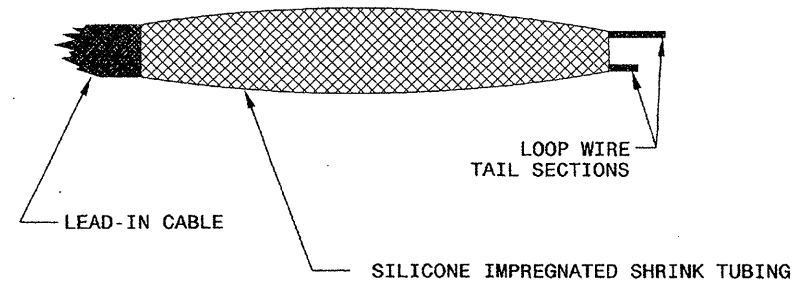
LOOP WIRE AND LEAD-IN CABLE CONNECTION DETAILS



STEP 3. INSULATE EACH SOLDER JOINT SEPARATELY



STEP 4. ENVIRONMENTALLY PROTECT SPLICE



STATE OF
 NORTH CAROLINA
 DEPT. OF TRANSPORTATION
 DIVISION OF HIGHWAYS
 RALEIGH, N.C.

11-08

ENGLISH DETAIL DRAWING FOR
INDUCTIVE DETECTION LOOPS
 SPLICING FOR LEAD-IN CABLE AND LOOP WIRE

SHEET 3 OF 3
1725D01

See Plate for Title

Prepared in the Offices of:

750 N. Greenfield Parkway
 Garner, NC 27529

SEAL

Milton Dean 11/24/08
 SIGNATURE DATE

24-nov-2008 08:16
 g:\work_files\std\std\plots\sheet\1725d01.may2007.dgn
 zml1111e