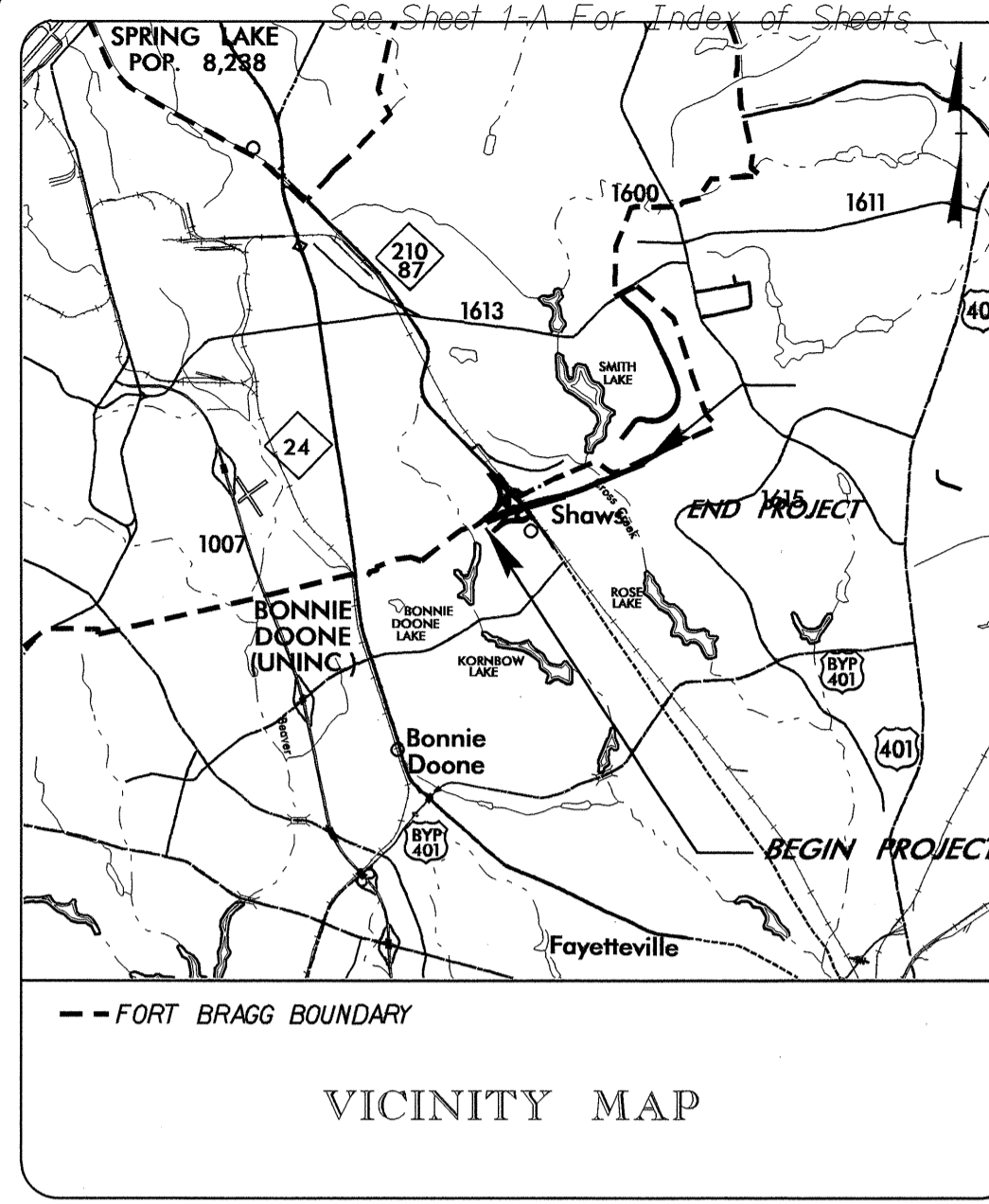


PROJECT: X-0002BC

9/09/99

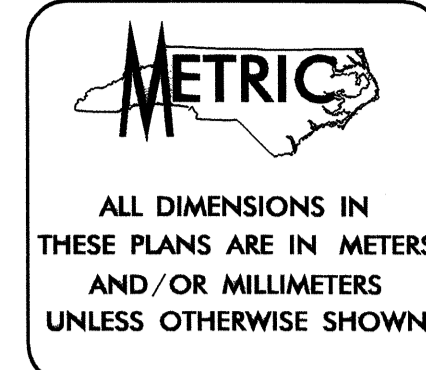
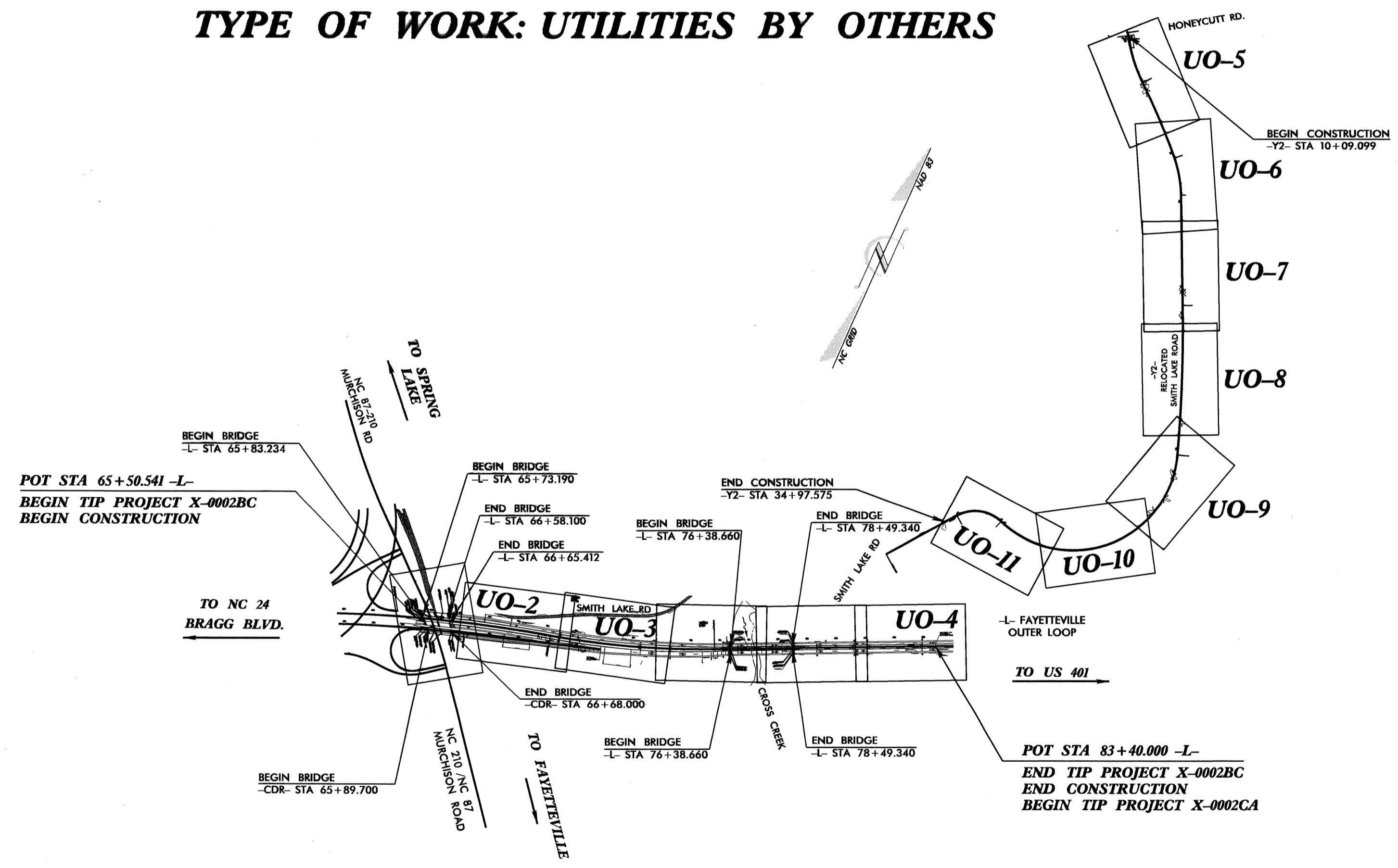


STATE OF NORTH CAROLINA
DIVISION OF HIGHWAYS

**UTILITY BY OTHERS PLANS
CUMBERLAND COUNTY**

LOCATION: FAYETTEVILLE OUTER LOOP FROM EAST OF NC 24 (BRAGG BLVD.) TO 1.74 km EAST OF NC 87 / NC 210 (MURCHISON RD.)

TYPE OF WORK: UTILITIES BY OTHERS



T.I.P. NO.	SHEET NO.
X-0002BC	UO-1

PART 1 OF 2

GRAPHIC SCALES

0	PLANS
0	PROFILE (HORIZONTAL)
0	PROFILE (VERTICAL)

INDEX OF SHEETS

SHEET NO.	DESCRIPTION
UO-1	TITLE SHEET
UO-2 THRU UO-11	UTILITY BY OTHERS PLAN SHEETS

UTILITY OWNERS ON PROJECT

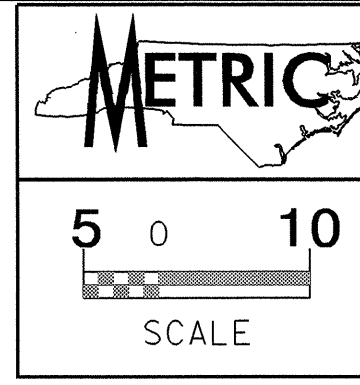
(1) CENTURY LINK - TELEPHONE
(2) COLONIAL PIPE LINE - GAS

PREPARED IN THE OFFICE OF:
**DIVISION OF HIGHWAYS
UTILITIES UNIT
UTILITY SECTION**

1591 MAIL SERVICES CENTER
RALEIGH, NC 27699-1591
PHONE (919) 250-4128
FAX (919) 250-4119

Roger Worthington, P.E. UTILITIES SECTION ENGINEER
R. B. WILKINS, P.E. UTILITIES SQUAD LEADER PROJECT ENGINEER
MICHAEL R. BRIGHT UTILITIES PROJECT DESIGNER

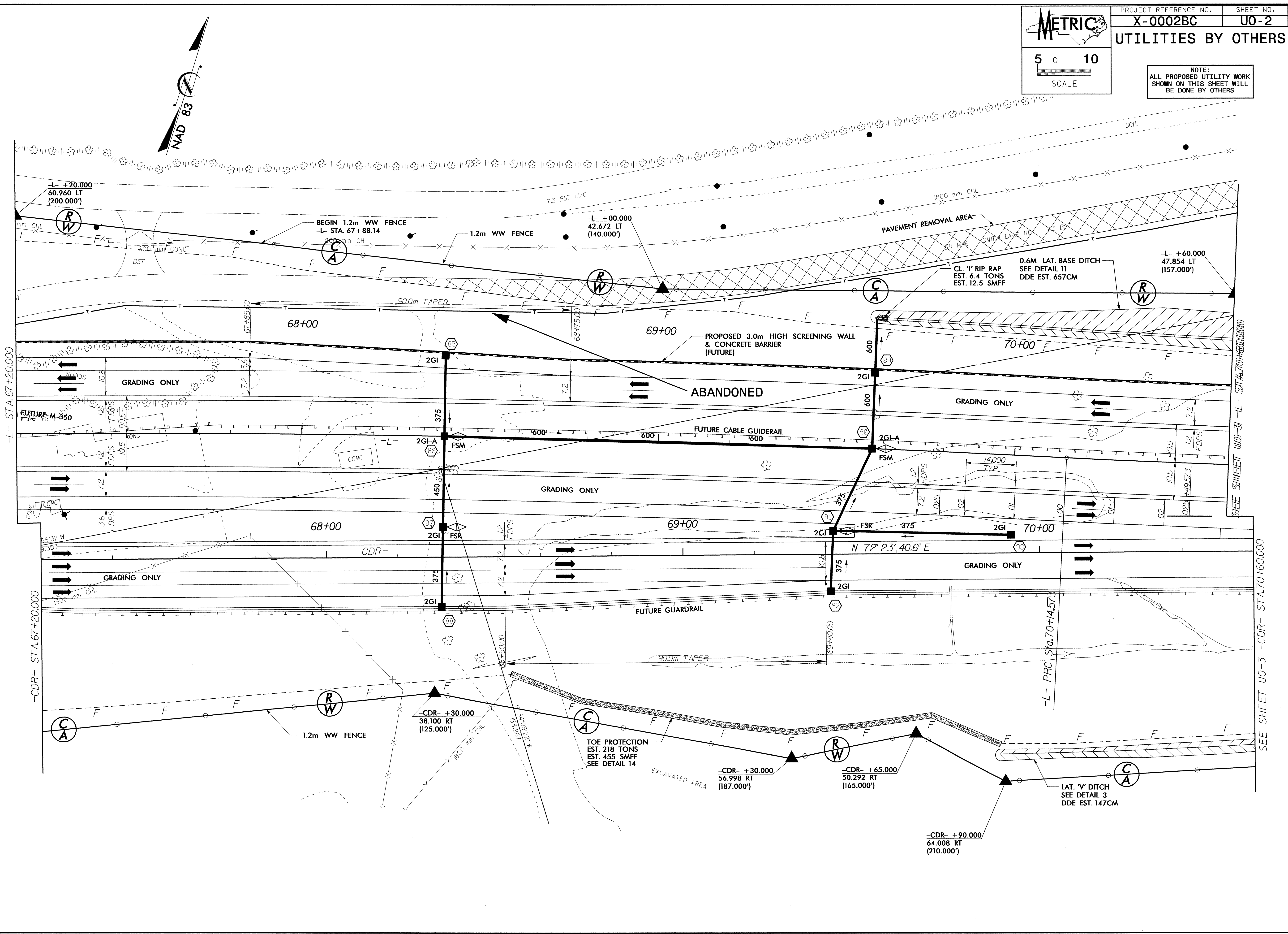
I:\AUG-2010 08-49
R:\Utilities\Projects\X-0002bc-ut_title.uol_psh.dgn
11/11/2010 11:12:00 AM



UTILITIES BY OTHERS

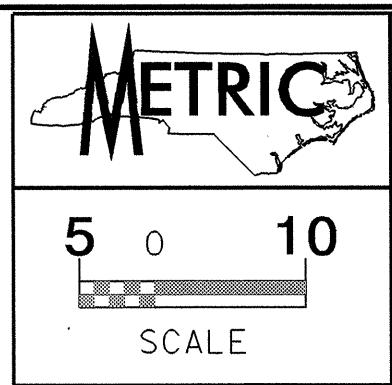
NOTE:
ALL PROPOSED UTILITY WORK
SHOWN ON THIS SHEET WILL
BE DONE BY OTHERS

26-MAR-2010 09:24 \\p01\proj\10002BC\X-0002BC-U0-2.dwg

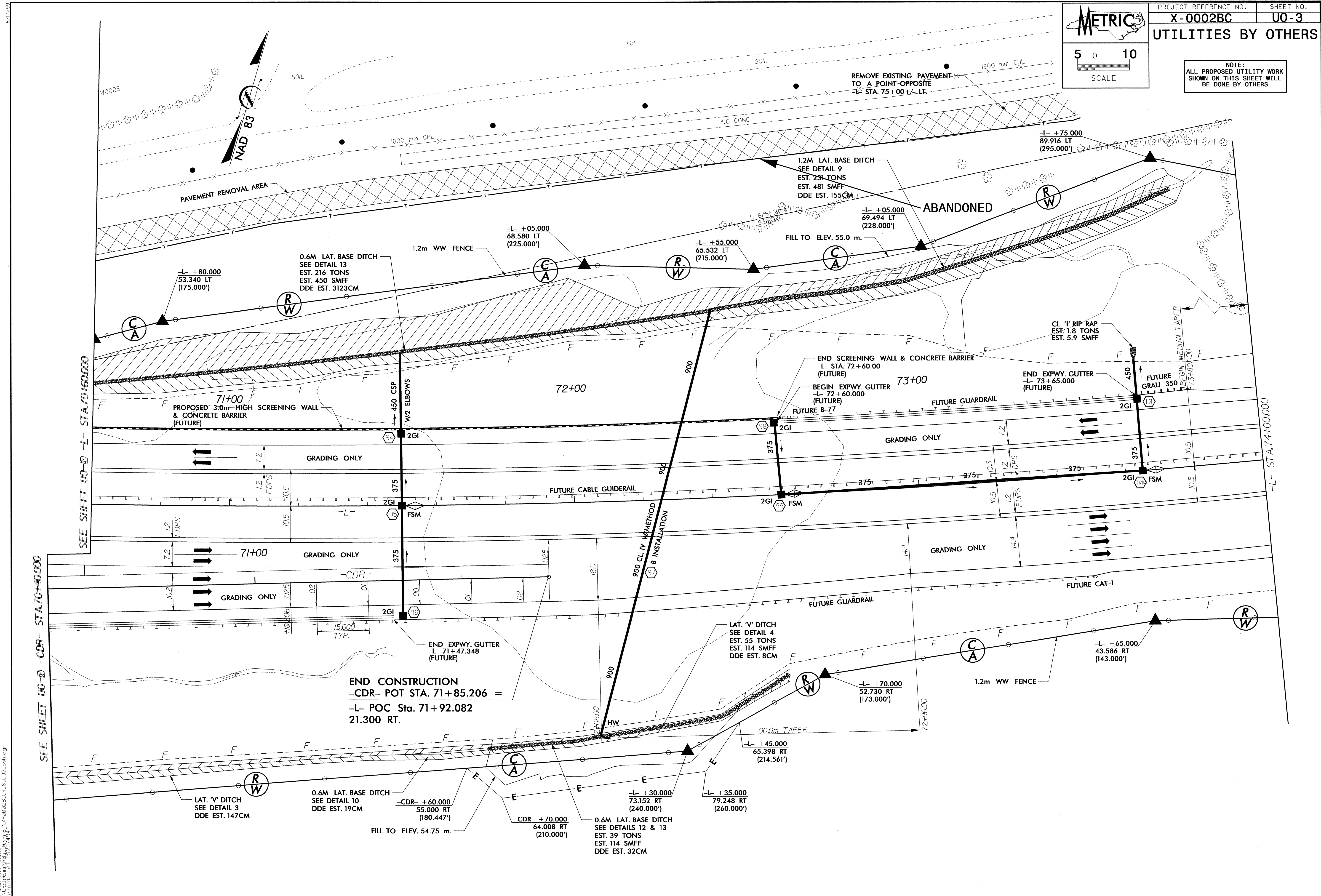


SEE SHEET U0-3 -L- STA. 70+60.000

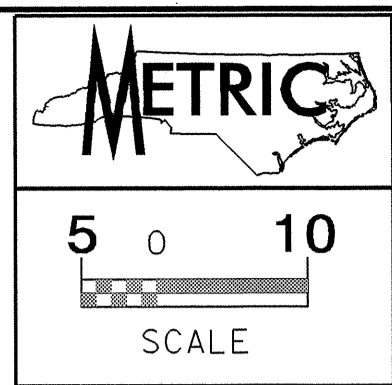
SEE SHEET U0-3 -CDR- STA. 70+60.000



NOTE:
 ALL PROPOSED UTILITY WORK
 SHOWN ON THIS SHEET WILL
 BE DONE BY OTHERS



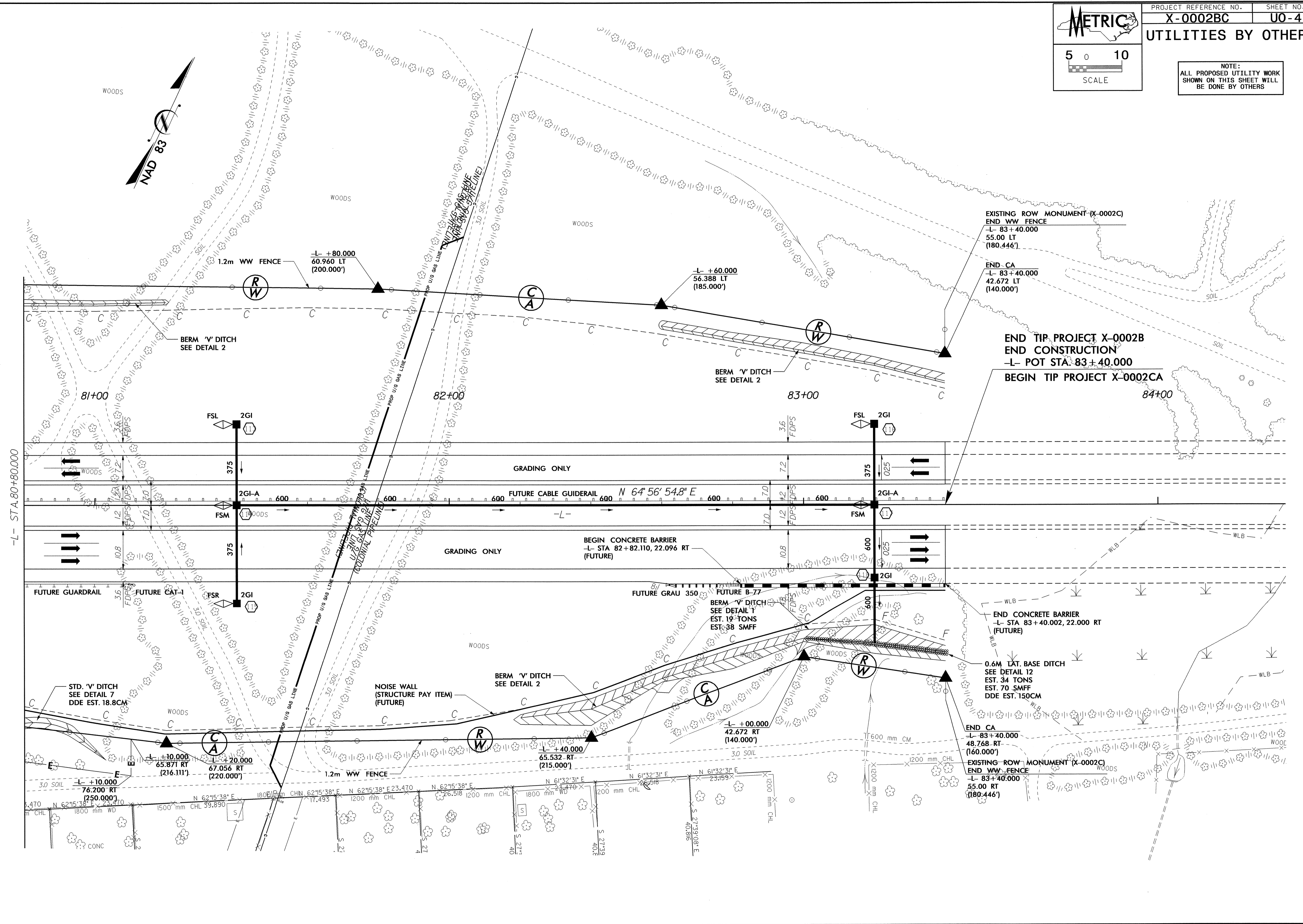
25-MAR-2006 08:50
 L:\Projects\X-0002BC\11-6-UD03.pwd.dgn
 mbricht wjg 18232424

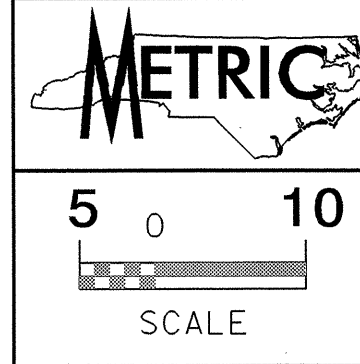


UTILITIES BY OTHERS

NOTE:
ALL PROPOSED UTILITY WORK SHOWN ON THIS SHEET WILL BE DONE BY OTHERS

26-MAR-2010 09:25:10 X:\P\0002BC_U0-4.dwg

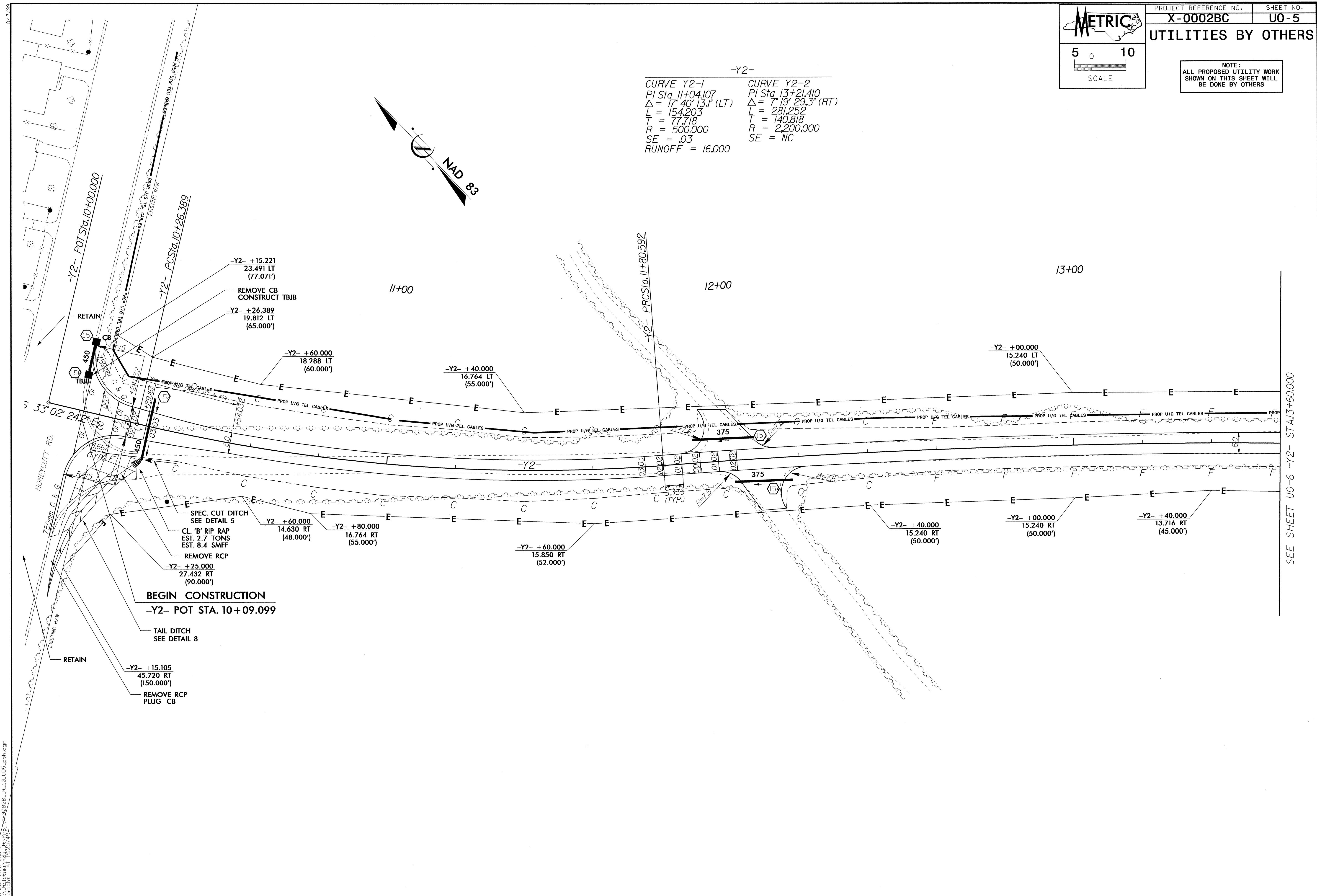
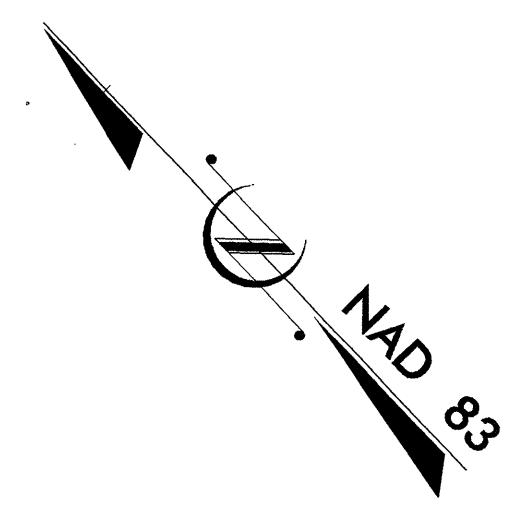




NOTE:
 ALL PROPOSED UTILITY WORK
 SHOWN ON THIS SHEET WILL
 BE DONE BY OTHERS

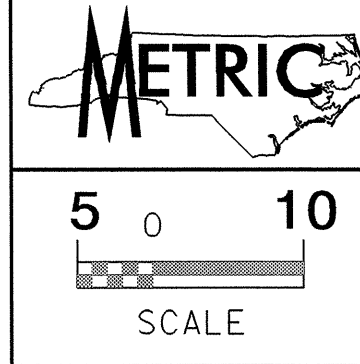
-Y2-
 CURVE Y2-1 PI Sta. 11+04.107
 $\Delta = 17^\circ 40' 13.1''$ (LT)
 $L = 154.203$
 $T = 77.718$
 $R = 500.000$
 $SE = .03$
 $RUNOFF = 16.000$

CURVE Y2-2 PI Sta. 13+21.410
 $\Delta = 7^\circ 19' 29.3''$ (RT)
 $L = 281.252$
 $T = 140.818$
 $R = 2,200.000$
 $SE = NC$



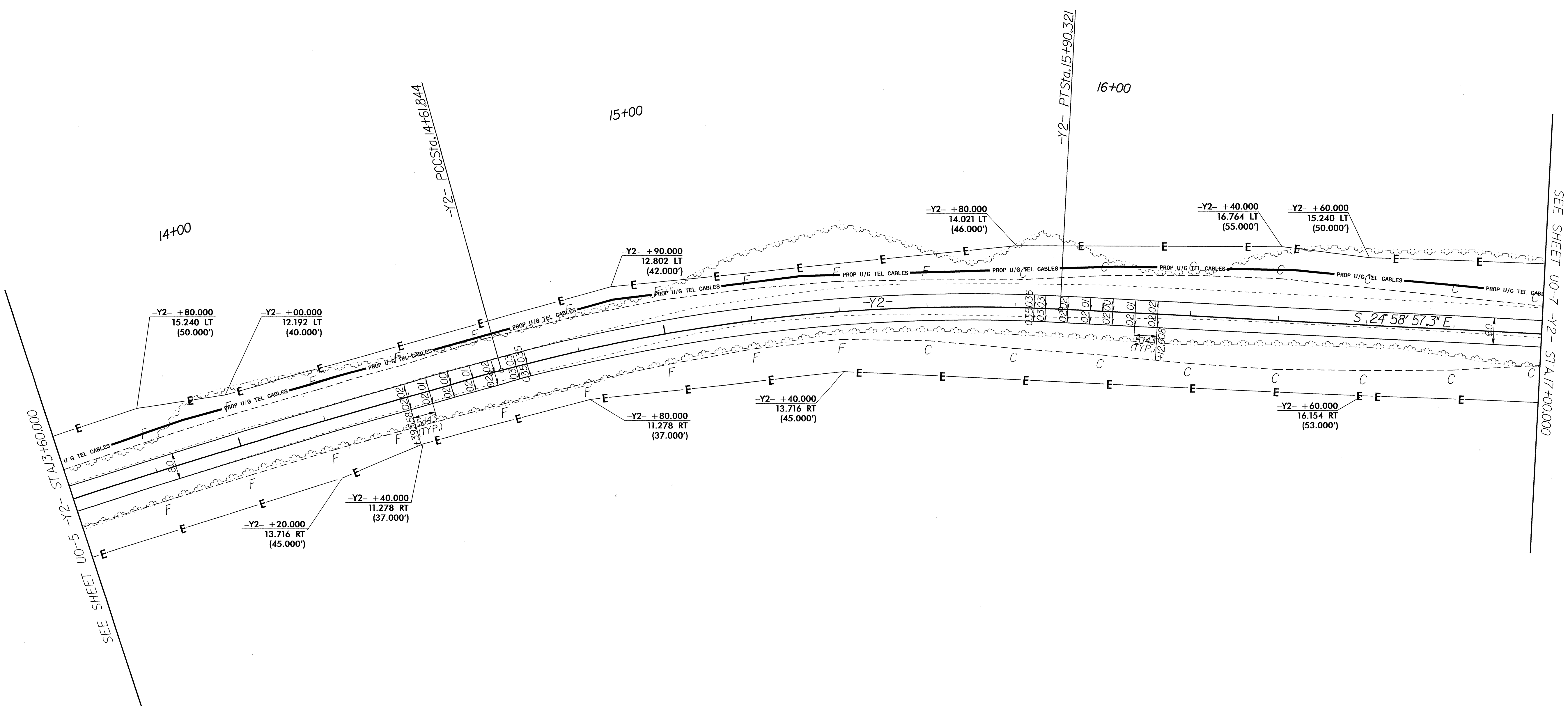
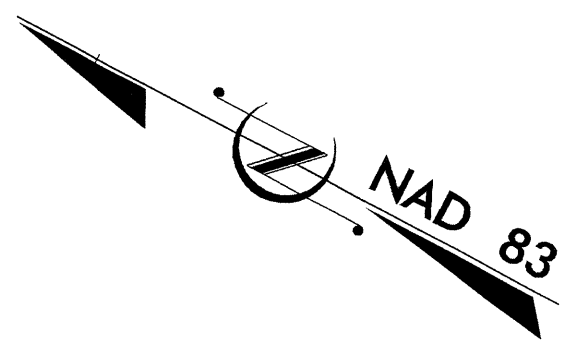
SEE SHEET U0-6 -Y2- STA.13+60.000

24-MAR-2010 09:25
 mba:shh:ca:1
 X:\0002BC\U0-5.dgn

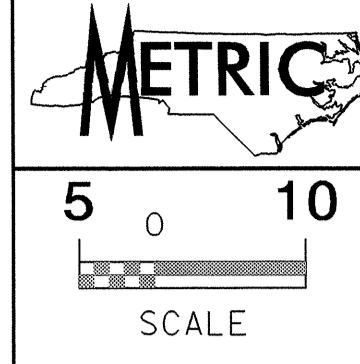


PROJECT REFERENCE NO. X-0002BC SHEET NO. U0-6
UTILITIES BY OTHERS

NOTE:
ALL PROPOSED UTILITY WORK
SHOWN ON THIS SHEET WILL
BE DONE BY OTHERS

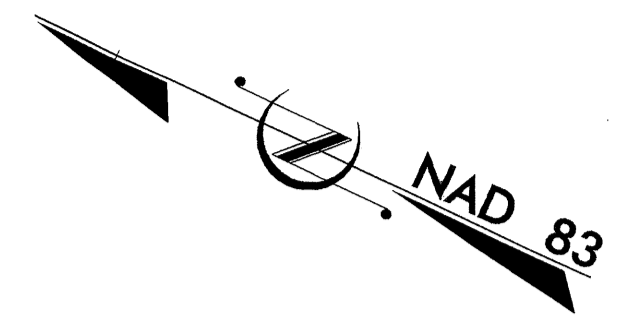


8/17/06
25-MAS-000_06/06
R:\Utilities\Proj\X-0002BC\U-11_U06.dgn
m:\light

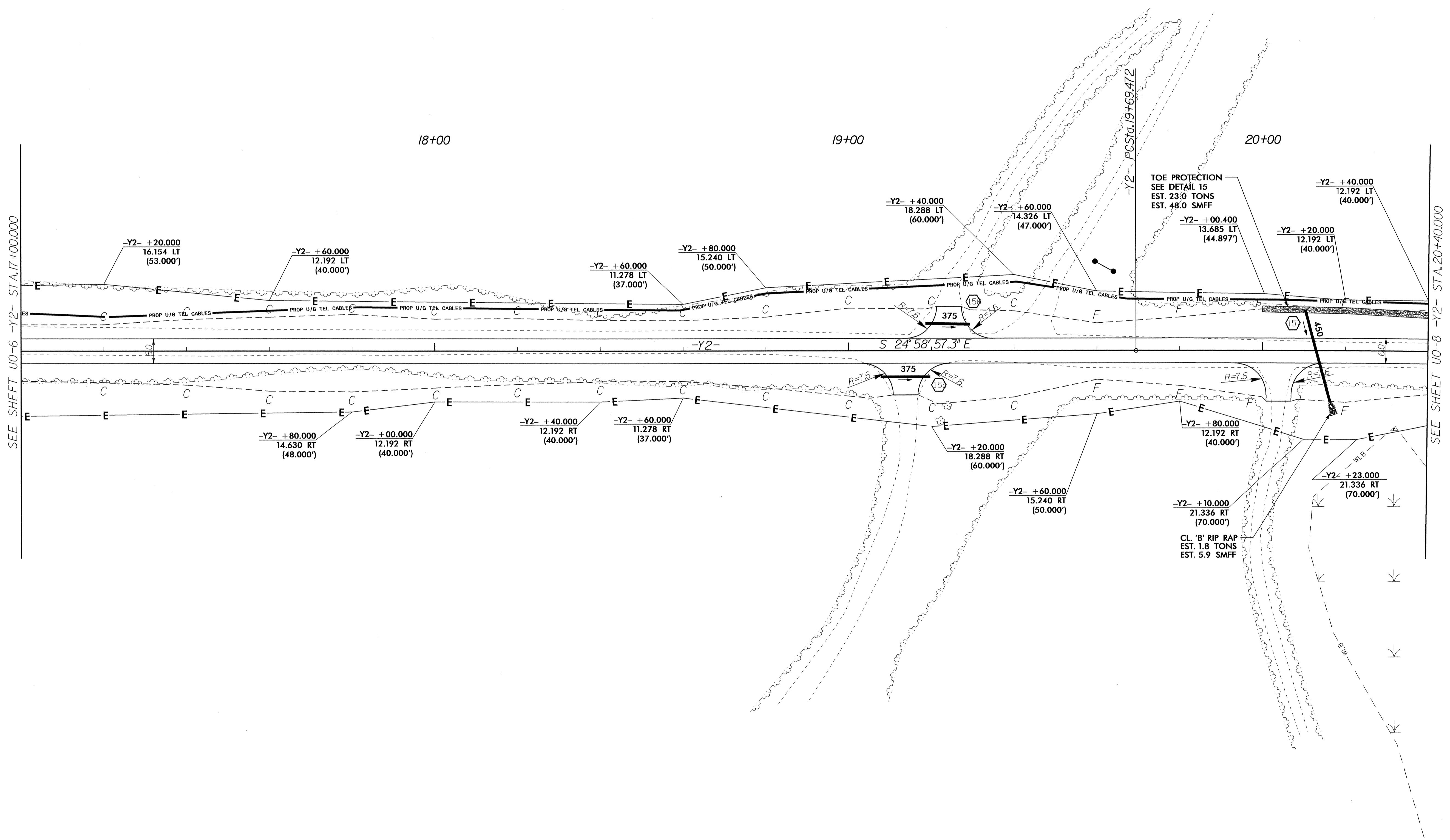


UTILITIES BY OTHERS

NOTE:
ALL PROPOSED UTILITY WORK
SHOWN ON THIS SHEET WILL
BE DONE BY OTHERS



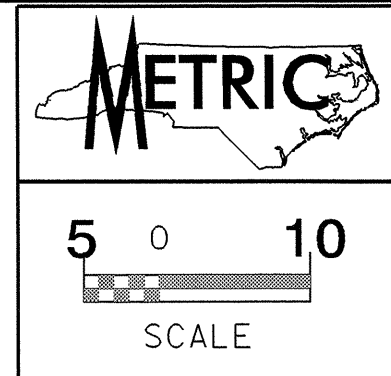
-Y2-
PI Sta. 22+24.601
 $\Delta = 5^\circ 47' 03.6''$ (RT)
L = 509.825
T = 255.129
R = 5,050.000
SE = NC



SEE SHEET U0-6 -Y2- STA.17+00.000

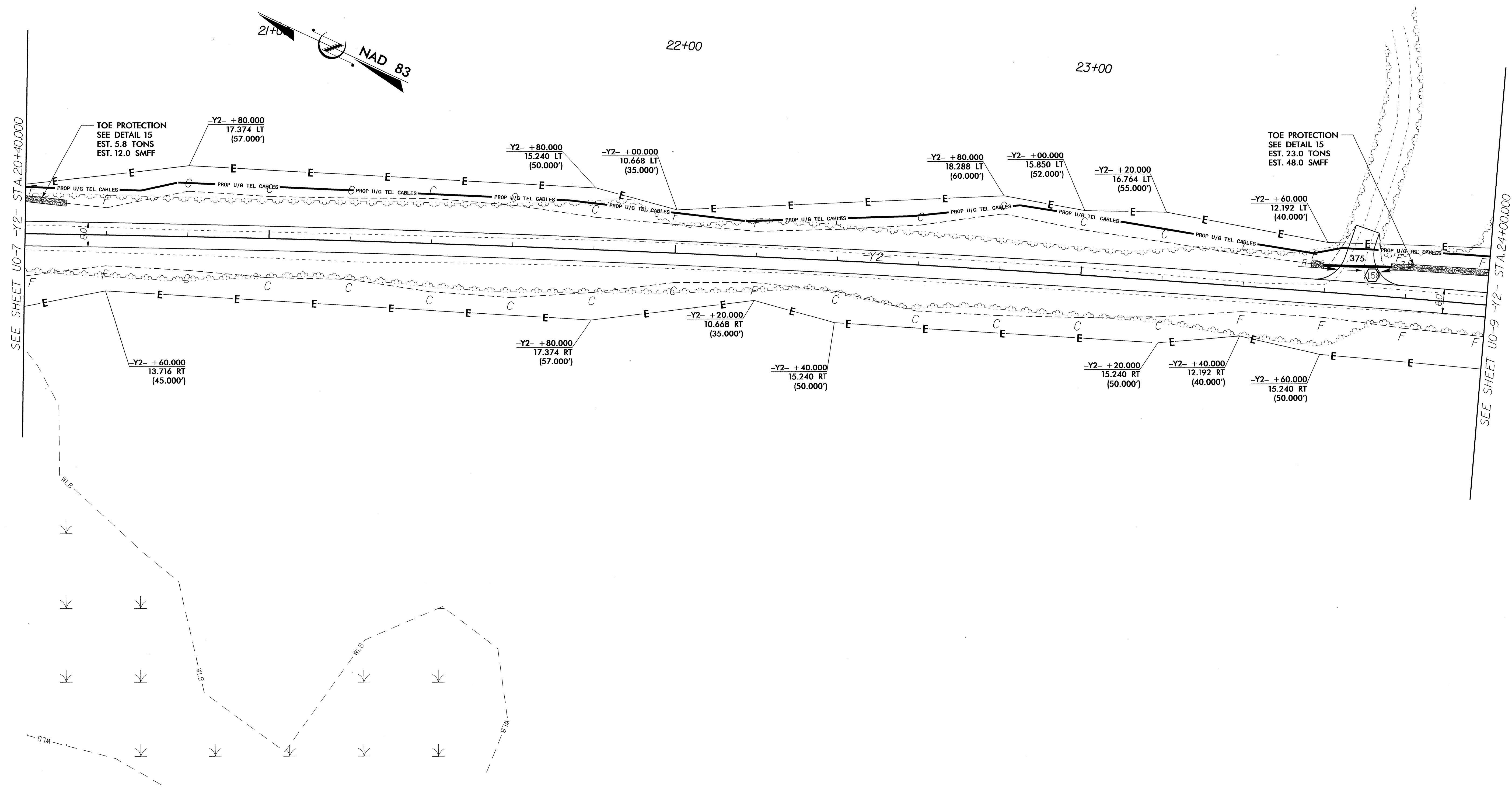
SEE SHEET U0-8 -Y2- STA.20+40.000

25-MAR-2000 09:27
C:\MAR-2000\0927\14\p01\X-0002BC_U0-7.dgn
12.10.07.ash/dgn

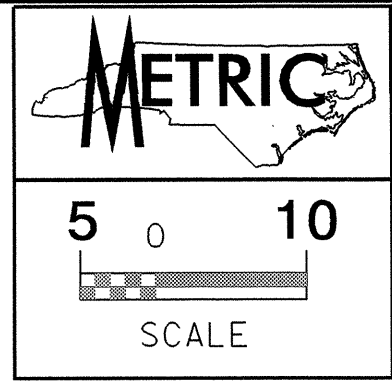


PROJECT REFERENCE NO. X-0002BC SHEET NO. U0-8
UTILITIES BY OTHERS

NOTE:
ALL PROPOSED UTILITY WORK
SHOWN ON THIS SHEET WILL
BE DONE BY OTHERS



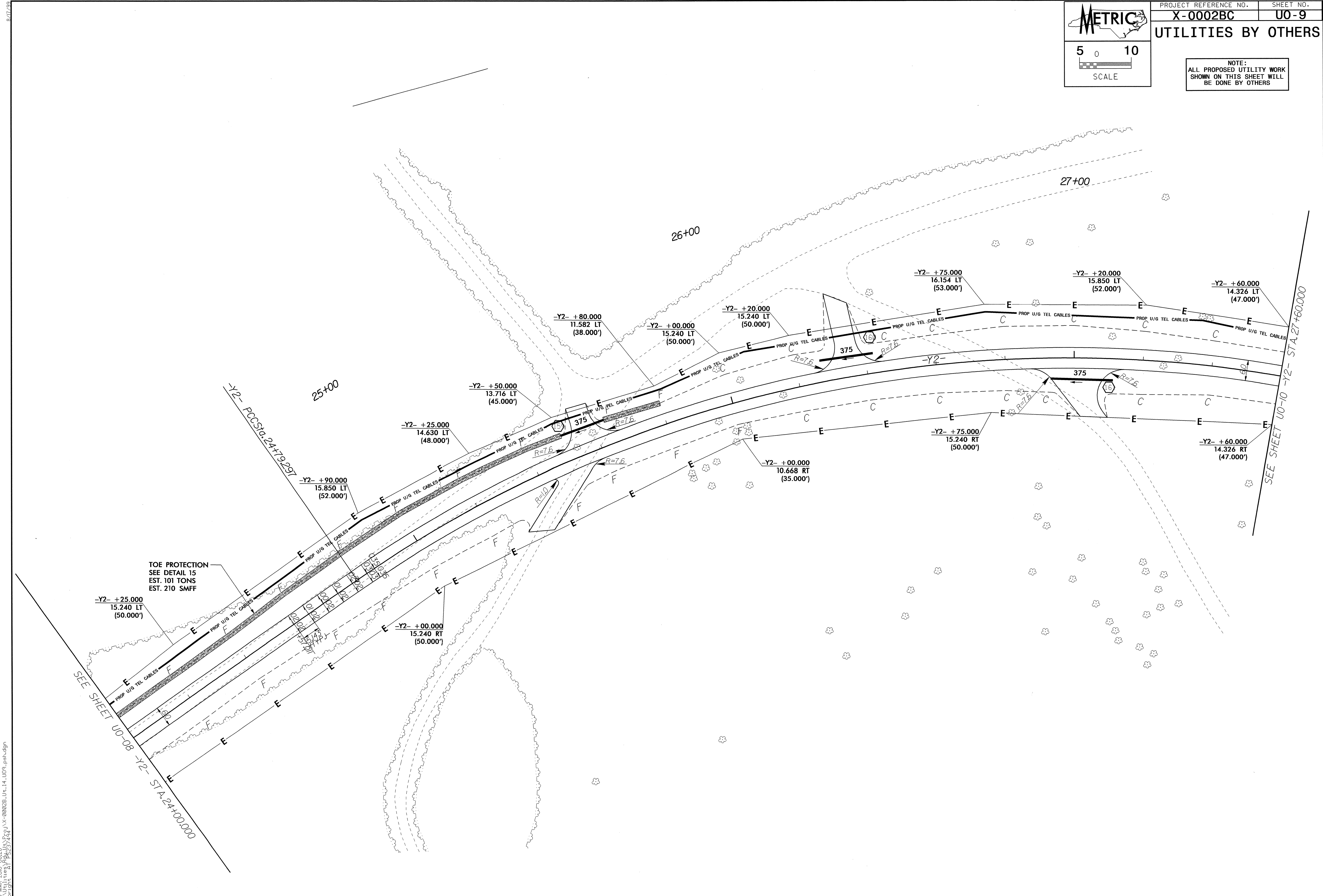
8/17/93
26-MAR-2010 08:27
R:\Utilities\Projects\X-0002BC\U0-8.dwg
Submitted At 11:25:27 AM



PROJECT REFERENCE NO. X-0002BC SHEET NO. U0-9

UTILITIES BY OTHERS

NOTE:
ALL PROPOSED UTILITY WORK
SHOWN ON THIS SHEET WILL
BE DONE BY OTHERS

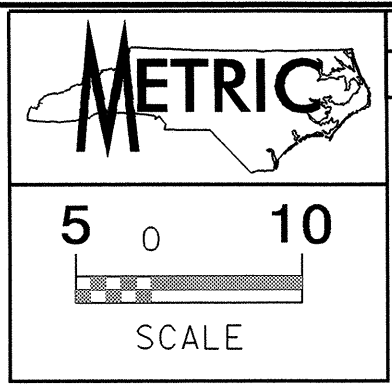


TOE PROTECTION
SEE DETAIL 15
EST. 101 TONS
EST. 210 SMFF

SEE SHEET U0-08 -Y2- STA. 24+00.000

SEE SHEET U0-10 -Y2- STA. 27+60.000

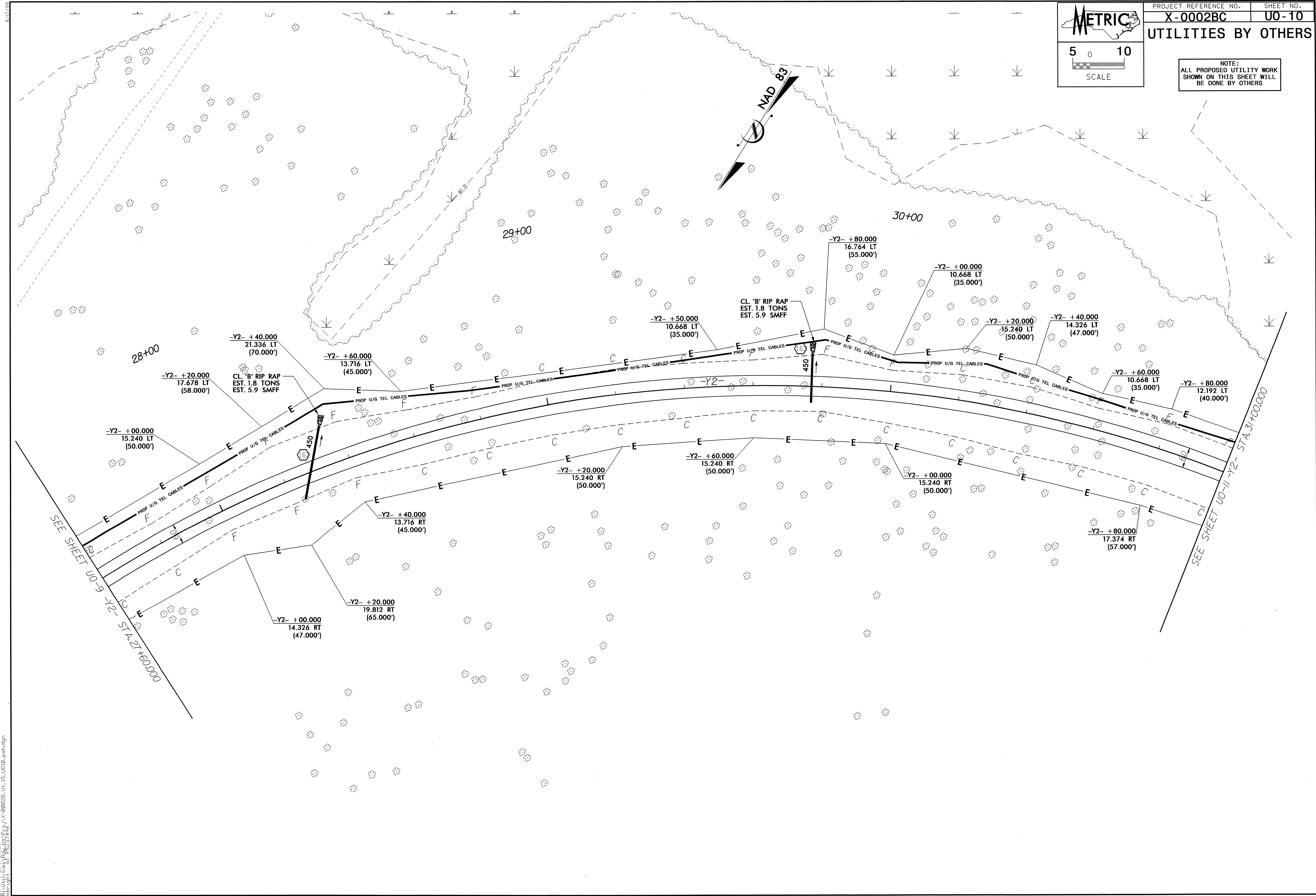
25-MAR-2010 08:28
m:\projects\0002BC\U0-9.dgn



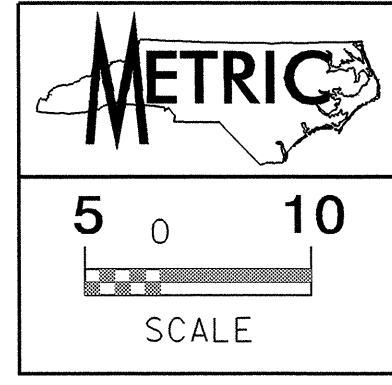
PROJECT REFERENCE NO. X-0002BC	SHEET NO. U0-10
--	---------------------------

UTILITIES BY OTHERS

NOTE:
ALL PROPOSED UTILITY WORK
SHOWN ON THIS SHEET WILL
BE DONE BY OTHERS



26-1145-010 06.29
 R:\Utilities\Projects\X-0002BC\U-15_U010.pah.dgn
 mbright at 10/23/24

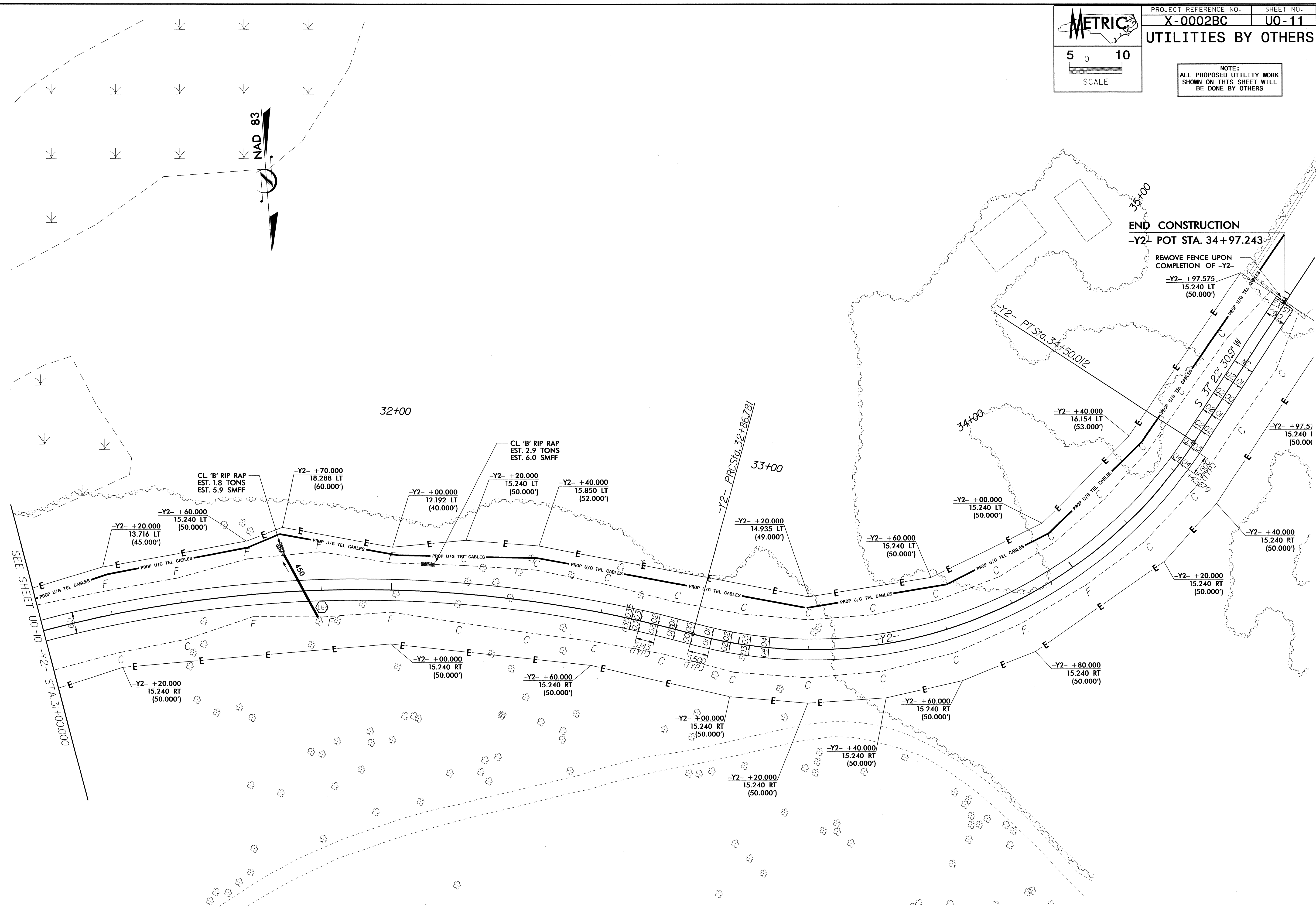


PROJECT REFERENCE NO. X-0002BC SHEET NO. U0-11

UTILITIES BY OTHERS

NOTE:
ALL PROPOSED UTILITY WORK
SHOWN ON THIS SHEET WILL
BE DONE BY OTHERS

26-MAR-2010 09:29 AM \\P:\Projects\X-0002BC\U-16-U011.pcd.dgn
mbp:ghl



SEE SHEET U0-10 -Y2- STA 31+00.000