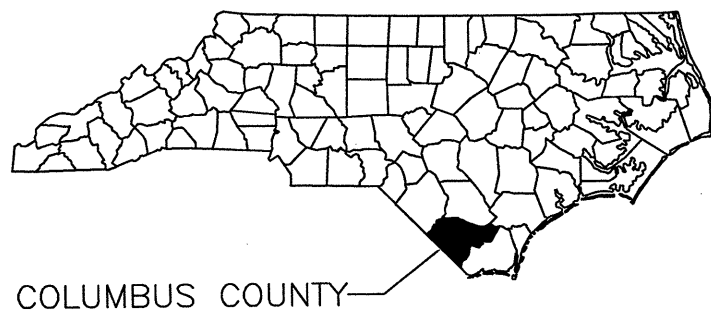
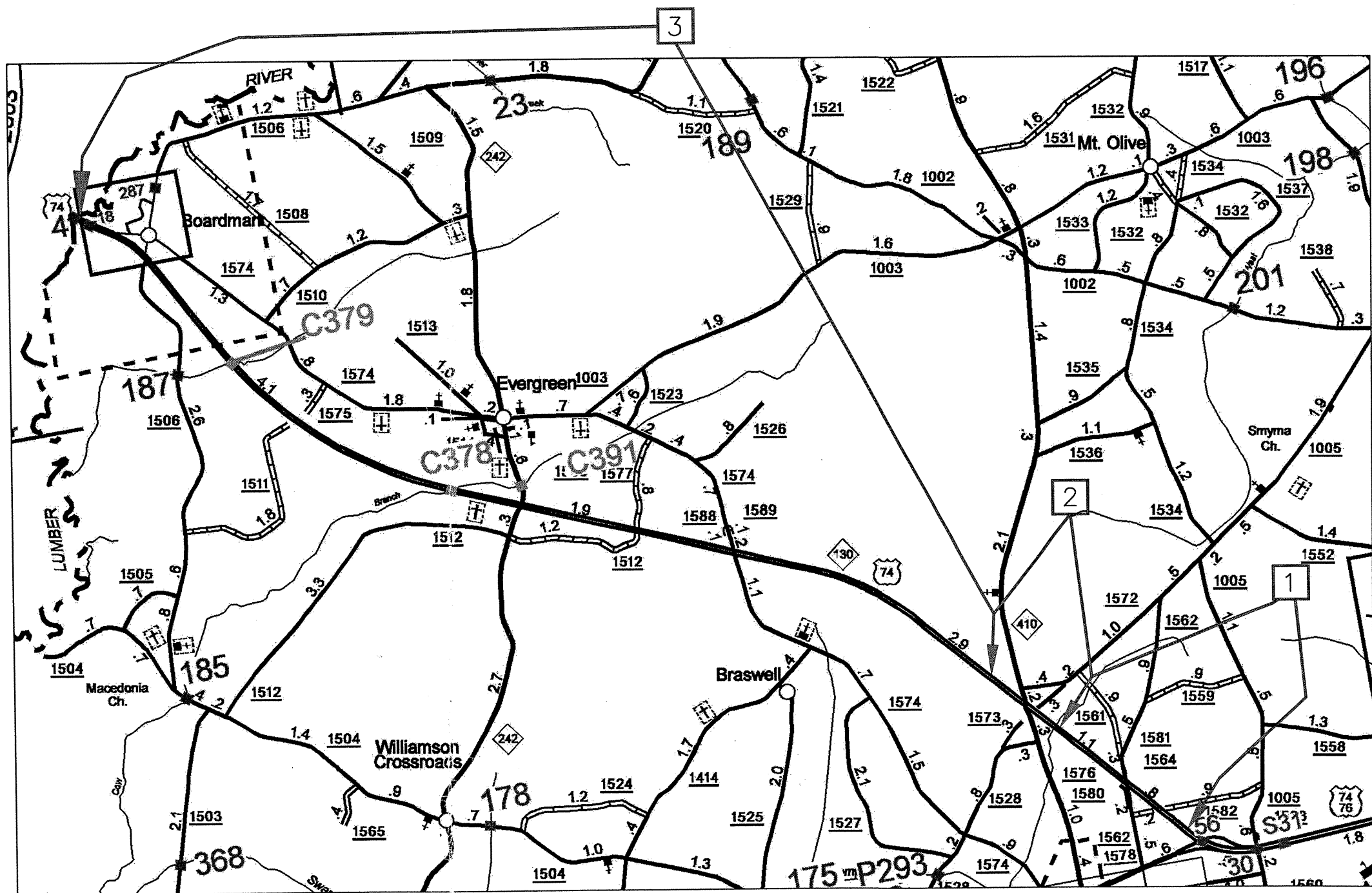
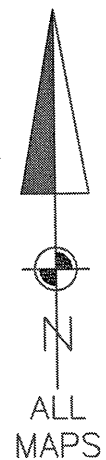
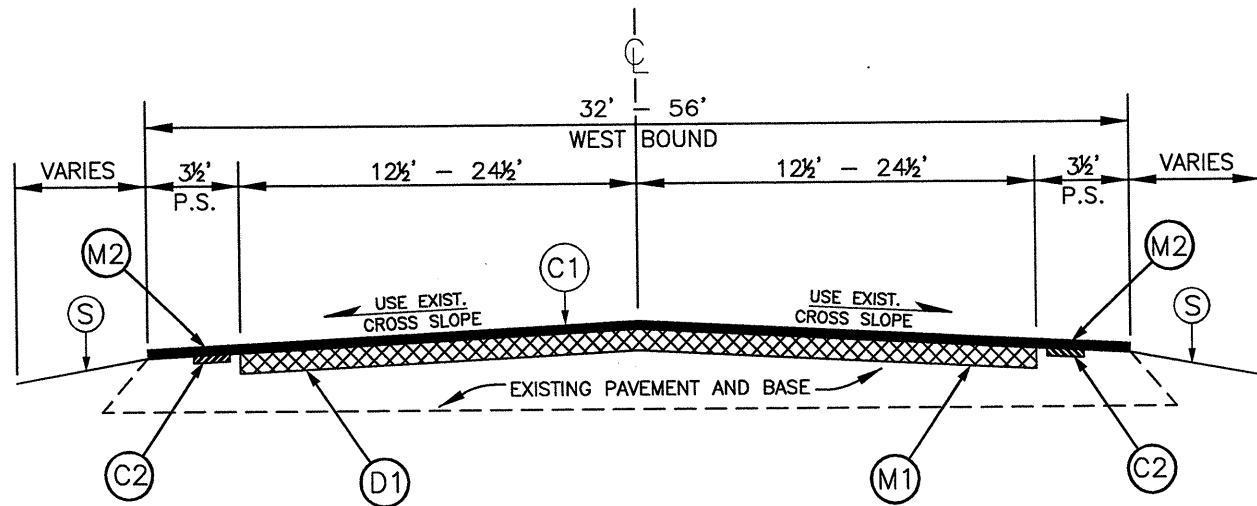


# RESURFACING MAPS – US 74 – COLUMBUS COUNTY



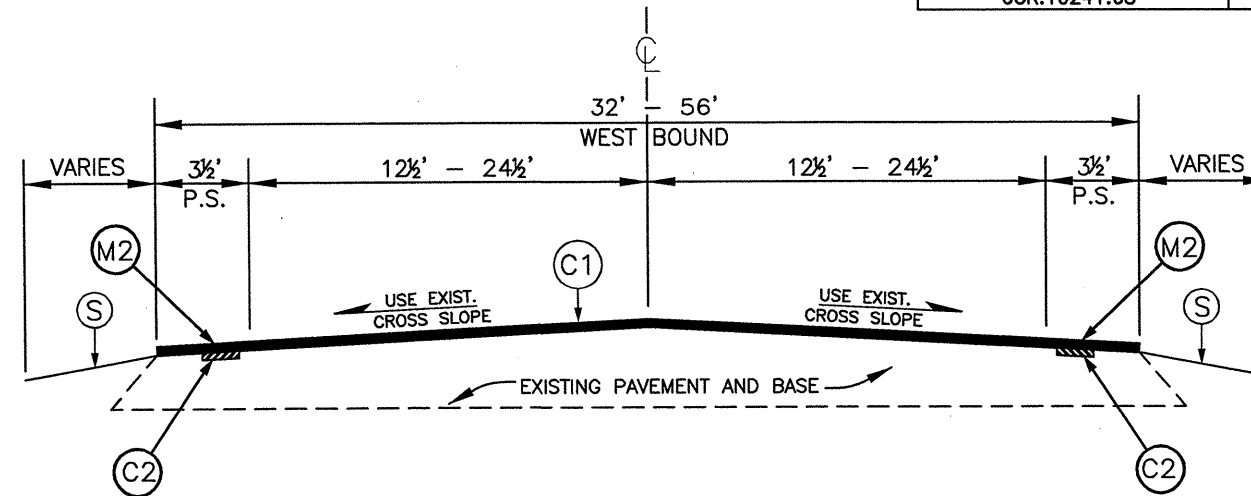
COLUMBUS COUNTY





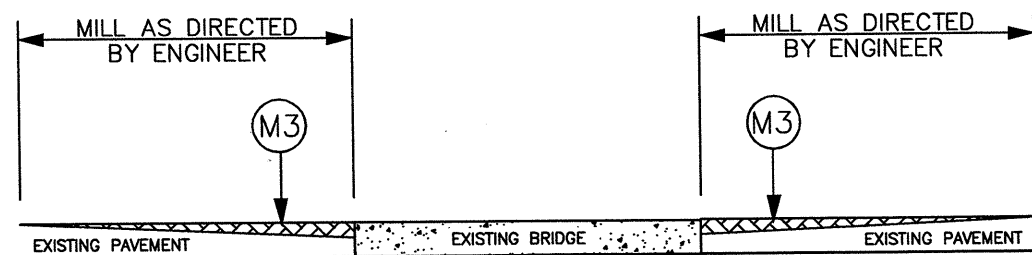
TYPICAL SECTION NO. 1

NOTE: INCLUDES INCIDENTAL MILLING AT THE ENDS OF SECTIONS FOR SMOOTH TIE-INS, CURB RADII, BRIDGE DECKS AND STREET INTERSECTIONS, AS NEEDED, OR AS DIRECTED BY THE ENGINEER. SEE DETAILS 1 & 2.



TYPICAL SECTION NO. 2

NOTE: INCLUDES INCIDENTAL MILLING AT THE ENDS OF SECTIONS FOR SMOOTH TIE-INS, CURB RADII, BRIDGE DECKS AND STREET INTERSECTIONS, AS NEEDED, OR AS DIRECTED BY THE ENGINEER. SEE DETAILS 1 & 2.



DETAIL 1  
MILLING APPROACHES

NOTE: MILLING SHALL BE PERFORMED AT BRIDGES AND RAILROAD APPROACHES AS DIRECTED BY THE ENGINEER IN ACCORDANCE WITH DETAIL 1.

EFF. 07-18-06  
REV. 01-02-07

2006 ROADWAY ENGLISH STANDARD DRAWINGS

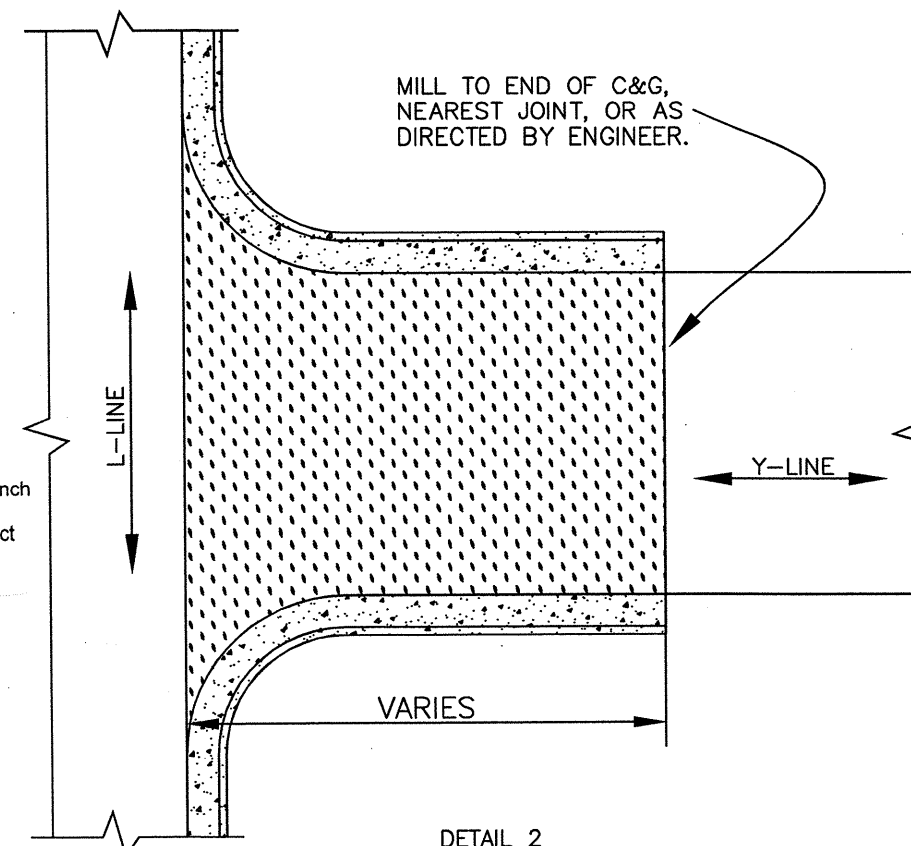
The following Roadway Standards as appear in "Roadway Standard Drawings" Highway Design Branch N. C. Department of Transportation - Raleigh, N. C., Dated July 18, 2006 are applicable to this project and by reference hereby are considered a part of these plans:

STD. NO. TITLE  
DIVISION 6 - ASPHALT BASES AND PAVEMENTS  
665.01 Milled Rumble Strips - Asphalt Pavements

PAVEMENT SCHEDULE	
D1	Proposed approximately 2 1/2" of Asphalt Concrete Intermediate Course, Type I-19.0-C, at an average rate of 285 pounds per square yard.
C1	Proposed approximately 1 1/2" of Asphalt Concrete Surface Course, Type S-9.5-C, at an average rate of 168 pounds per square yard.
C2	Proposed approximately 1/2" of Asphalt Concrete Surface Course, Type S-4.75-A, at an average rate of 50 pounds per square yard.
M1	Milling Depth 0" - 2 1/2" from outside edge line to inside edge line, with a variable width from 25' to 49', or as Directed by the Engineer.
M2	Milling Depth 0" - 1/2" for proposed rumble strips in accordance with Standard Drawing 665.01 of the Roadway Standard Drawings, or as Directed by the Engineer.
M3	Milling Depth 0" - 4" at all Bridge and Railroad Approaches, for the entire width of the roadway, or as Directed by the Engineer.
S	Shoulder Reconstruction to be performed by others.

DRAWINGS NOT TO SCALE

COLUMBUS		TYPICAL NO. 1	TYPICAL NO. 2
	PRIMARY	US 74-A & C	US 74-B
	SECONDARY		



DETAIL 2  
Y-LINE / END JOINT MILLING

NOTE: INCLUDES INCIDENTAL MILLING AT THE ENDS OF SECTIONS FOR SMOOTH TIE-INS, CURB RADII, AND STREET INTERSECTIONS, AS NEEDED, OR AS DIRECTED BY THE ENGINEER. SEE DETAIL 2.

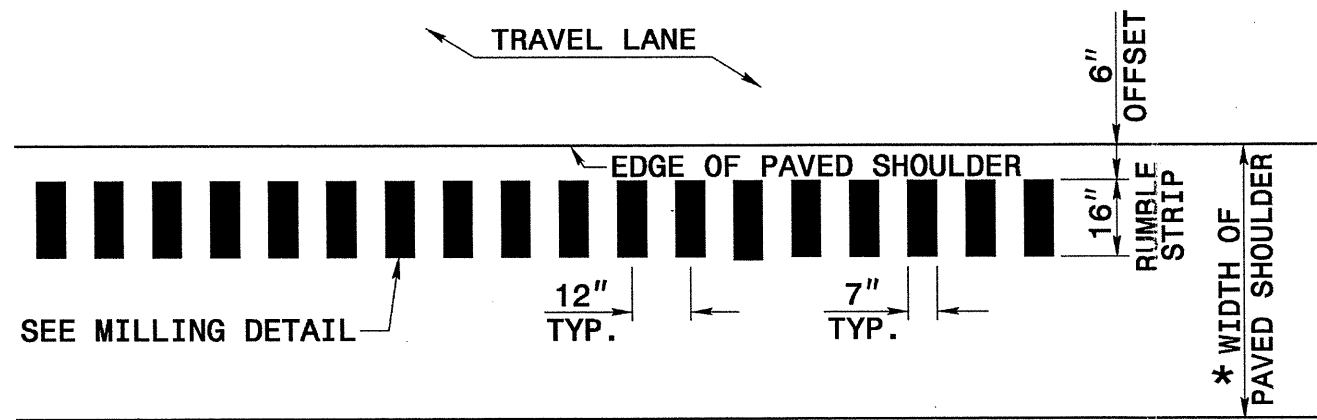
PROJECT NO.	SHEET NO.	TOTAL NO.
6cr.10241.68	3	

## SUMMARY OF QUANTITIES

PROJECT NO	COUNTY	MAP NO	ROUTE	DESCRIPTION	TYP NO	FINAL SURFACE TESTING REQUIRED	LENGTH MI	WIDTH FT	0" TO 2.5" MILLING SY	0" TO 4" MILLING SY	INCIDENTAL MILLING SY	INTERMEDIATE COURSE, I19.0C TONS	SURFACE COURSE, S9.5C TONS	SURFACE COURSE, S4.75A TONS	PG 64-22 PLANT MIX TONS	PG 70-22 PLANT MIX TONS	PATCHING EXISTING PAVEMENT TONS	MILLED RUMBLE STRIPS (ASPHALT CEMENT CONCRETE) LF
6cr.10241.68	Columbus	1	US 74 WBL-A	FROM US 76 TO CONST JOINT EAST OF NC 410	1	YES	1.48	32	21,707			3,248	2,451	59	157	147	15	15,629
<b>TOTAL FOR MAP NO. 1</b>							<b>1.48</b>		<b>21,707</b>			<b>3,248</b>	<b>2,451</b>	<b>59</b>	<b>157</b>	<b>147</b>	<b>15</b>	<b>15,629</b>
6cr.10241.68	Columbus	2	US 74 WBL- B	CONST JOINT EAST OF NC 410 TO CONSTR JOINT WEST OF NC 410	2	NO	0.93	32					1,818	37	3	109	9	9,821
<b>TOTAL FOR MAP NO. 2</b>							<b>0.93</b>						<b>1,818</b>	<b>37</b>	<b>3</b>	<b>109</b>	<b>9</b>	<b>9,821</b>
6cr.10241.68	Columbus	3	US 74- WBL-C	CJ WEST OF NC 410 TO ROBESON COUNTY LINE	1	YES	9.18	32	139,920	5,069	500	22,381	16,311	364	1,077	979	92	96,941
<b>TOTAL FOR MAP NO. 3</b>							<b>9.18</b>		<b>139,920</b>	<b>5,069</b>	<b>500</b>	<b>22,381</b>	<b>16,311</b>	<b>364</b>	<b>1,077</b>	<b>979</b>	<b>92</b>	<b>96,941</b>
<b>TOTAL FOR PROJ NO. 6cr.10241.68</b>							<b>11.59</b>		<b>161,627</b>	<b>5,069</b>	<b>500</b>	<b>25,629</b>	<b>20,580</b>	<b>460</b>	<b>1,237</b>	<b>1,235</b>	<b>116</b>	<b>122,391</b>
<b>GRAND TOTAL</b>							<b>11.59</b>		<b>161,627</b>	<b>5,069</b>	<b>500</b>	<b>25,629</b>	<b>20,580</b>	<b>460</b>	<b>1,237</b>	<b>1,235</b>	<b>116</b>	<b>122,391</b>

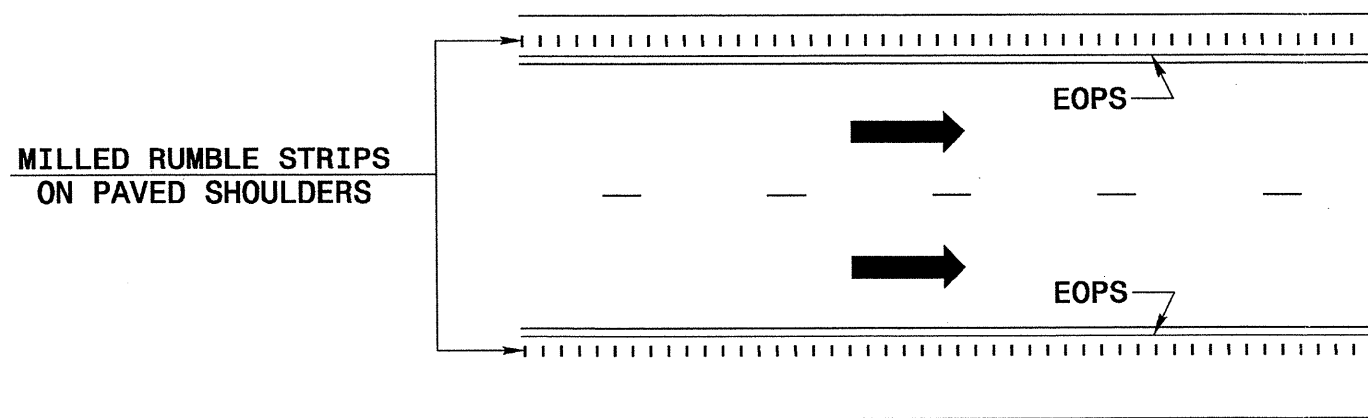
## THERMOPLASTIC AND PAINT QUANTITIES

PROJECT NO	COUNTY	MAP NO	ROUTE	DESCRIPTION	LENGT H	WIDTH	4688000000-E		4690000000-E	4710000000-E	4725000000-E				4810000000-E		4835000000-E	4900000000-N	4589000000-N
							6" X 90 M YELLOW THERMO LF	6" X 90 M WHITE THERMO LF	6" X 120 M WHITE THERMO LF	24" X 120 M WHITE THERMO LF	THERMO LT ARROW 90 M EA	THERMO STR ARROW 90 M EA	THERMO RT ARROW 90 M EA	THERMO RAMP ARROW (90 MILS) EA	4" WHITE PAINT LF	4" YELLOW PAINT LF	24" WHITE PAINT LF	CRYSTAL & RED MARKERS EA	TRAFFIC CONTROL LS
6cr.10241.68	Columbus	1	US 74 WBL-A	FROM US 76 TO CONST JOINT EAST OF NC 410	1.48	32	63,500	63,500	17,375	150	9	24	9	3	80,875	63,500	150	900	*
<b>TOTAL FOR MAP NO. 1</b>					<b>1.48</b>		<b>63,500</b>	<b>63,500</b>	<b>17,375</b>	<b>150</b>	<b>9</b>	<b>24</b>	<b>9</b>	<b>3</b>	<b>80,875</b>	<b>63,500</b>	<b>150</b>	<b>900</b>	<b>1</b>
6cr.10241.68	Columbus	2	US 74 WBL- B	CONST JOINT EAST OF NC 410 TO CONSTR JOINT WEST OF NC 410	0.93	32													*
<b>TOTAL FOR MAP NO. 2</b>					<b>0.93</b>														<b>1</b>
6cr.10241.68	Columbus	3	US 74- WBL-C	CJ WEST OF NC 410 TO ROBESON COUNTY LINE	9.18	32													*
<b>TOTAL FOR MAP NO. 3</b>					<b>9.18</b>														<b>1</b>
<b>TOTAL FOR PROJ NO. 6cr.10241.68</b>					<b>11.59</b>		<b>63,500</b>	<b>63,500</b>	<b>17,375</b>	<b>150</b>	<b>9</b>	<b>24</b>	<b>9</b>	<b>3</b>	<b>80,875</b>	<b>63,500</b>	<b>150</b>	<b>900</b>	<b>1</b>
<b>GRAND TOTAL</b>					<b>11.59</b>		<b>63,500</b>	<b>63,500</b>	<b>17,375</b>	<b>150</b>	<b>9</b>	<b>24</b>	<b>9</b>	<b>3</b>	<b>80,875</b>	<b>63,500</b>	<b>150</b>	<b>900</b>	<b>1</b>
<b>GRAND TOTAL</b>							<b>127,000</b>					<b>45</b>			<b>144,375</b>				

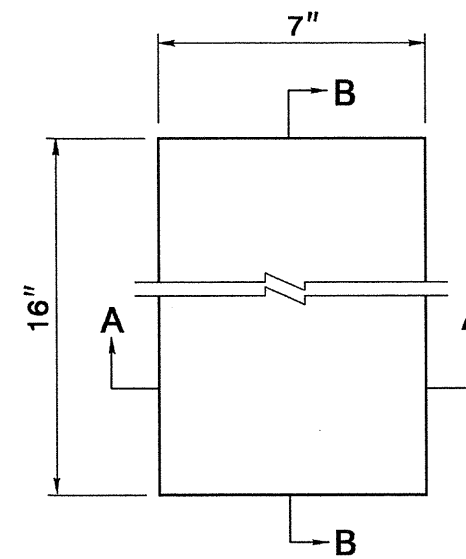


\* FOR WIDTHS SEE TYPICAL SECTIONS AND PLAN SHEETS

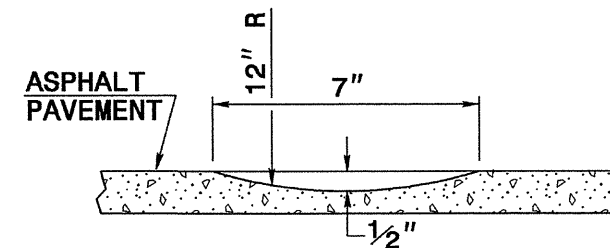
**PLAN VIEW  
 PAVED SHOULDER**



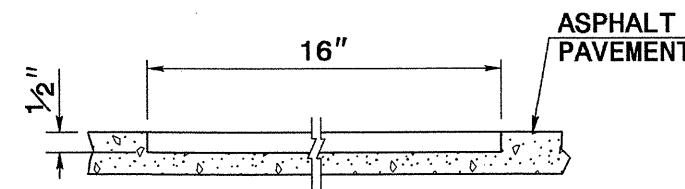
**LANE TREATMENT**



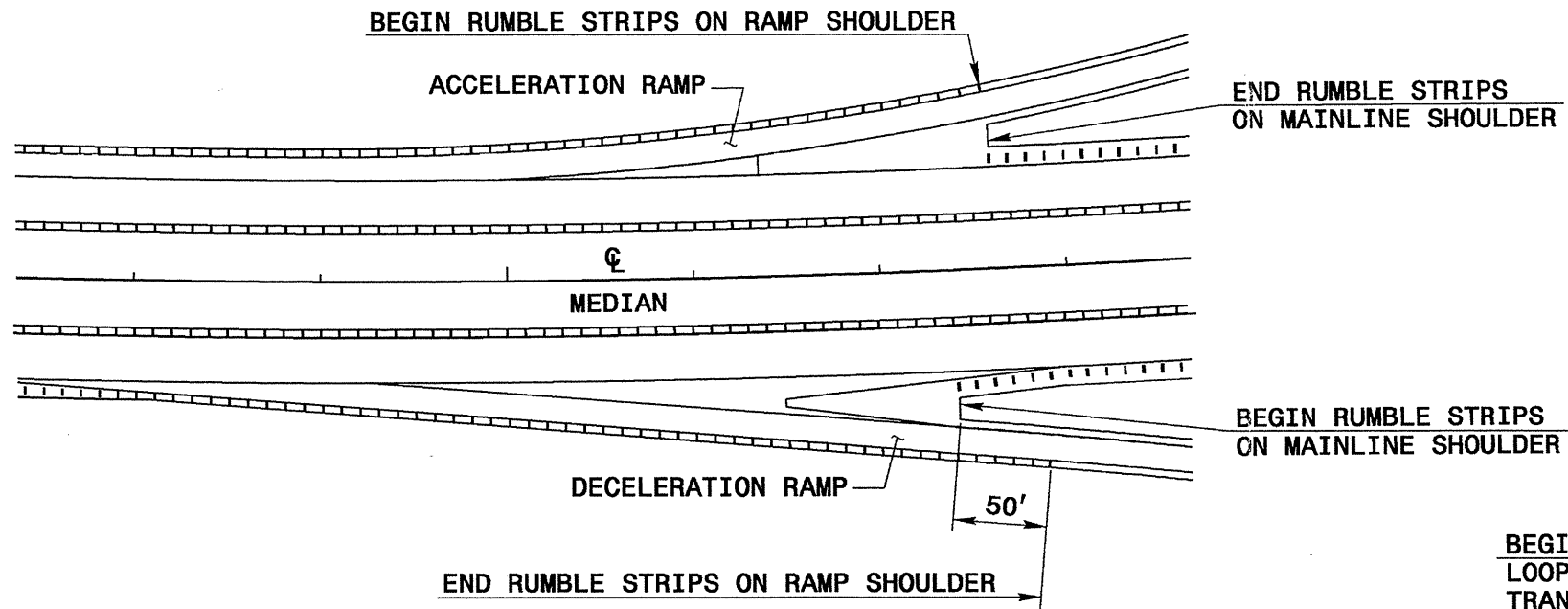
**PLAN VIEW  
 MILLING DETAIL**



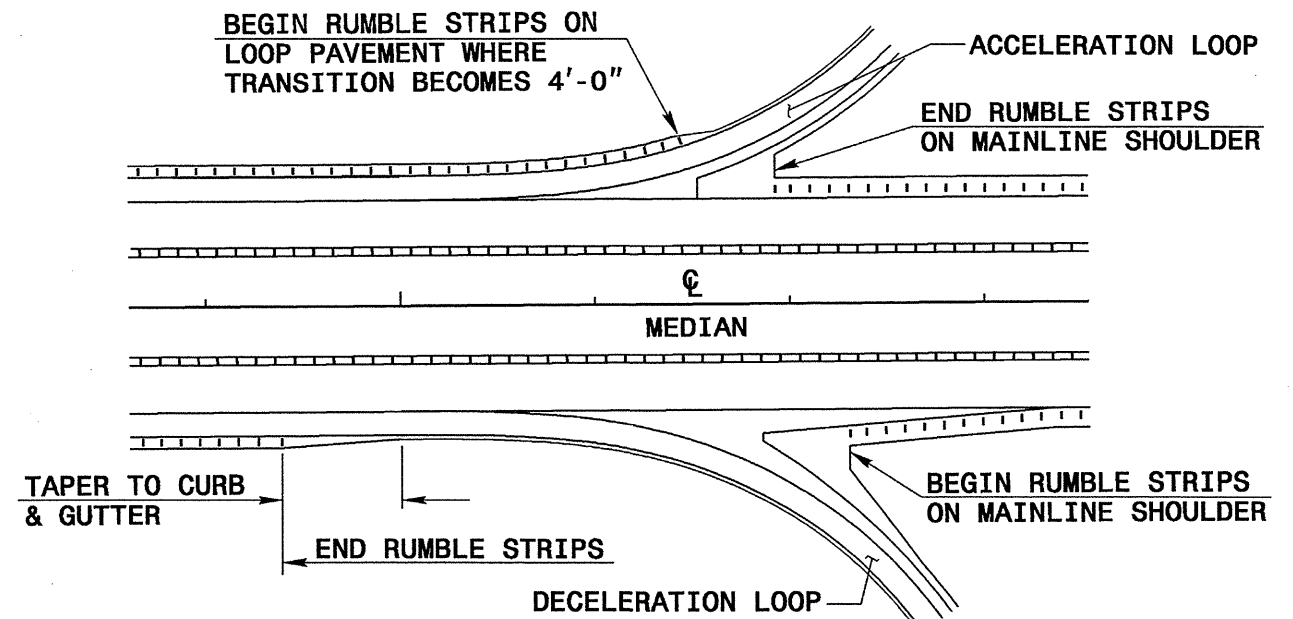
**SECTION A-A**



**SECTION B-B**

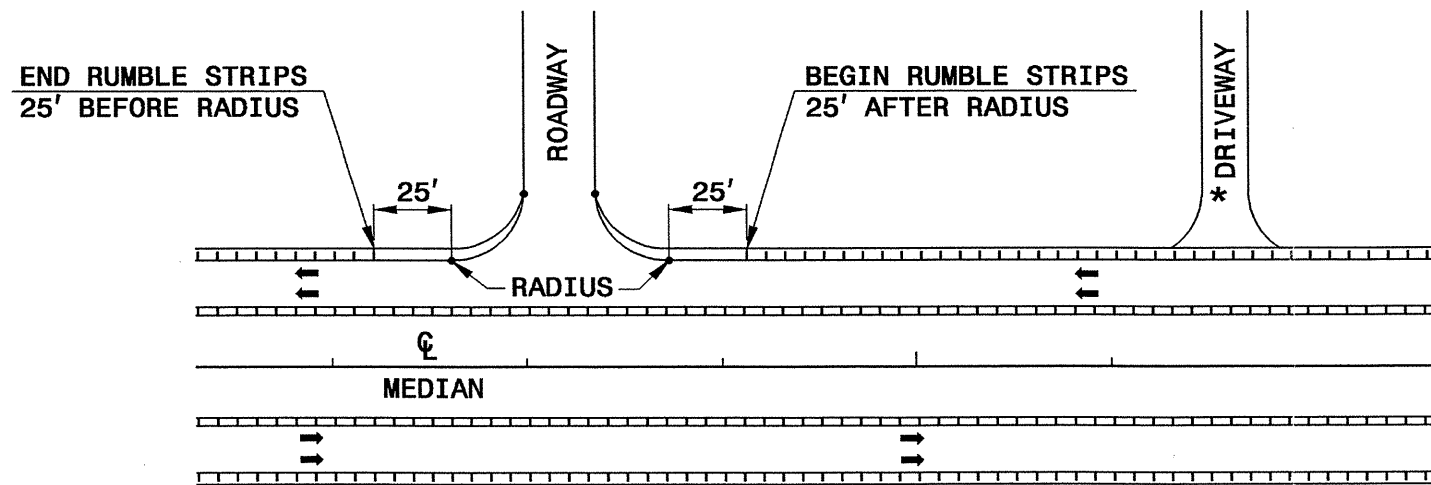


**TREATMENT AT RAMP TERMINALS**



**TREATMENT AT LOOP TERMINALS**

\* TERMINATE AT DRIVEWAYS AS DIRECTED BY THE ENGINEER.



**TREATMENT AT INTERSECTIONS**

(ROADWAY OR DRIVEWAY)

