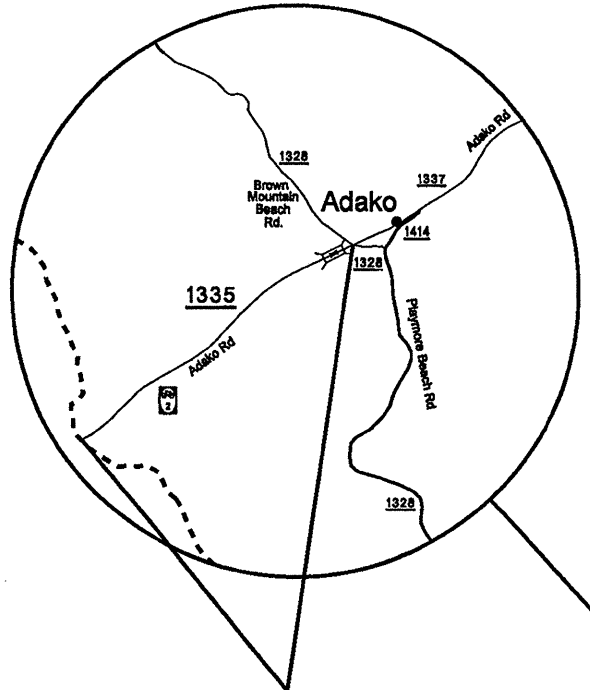


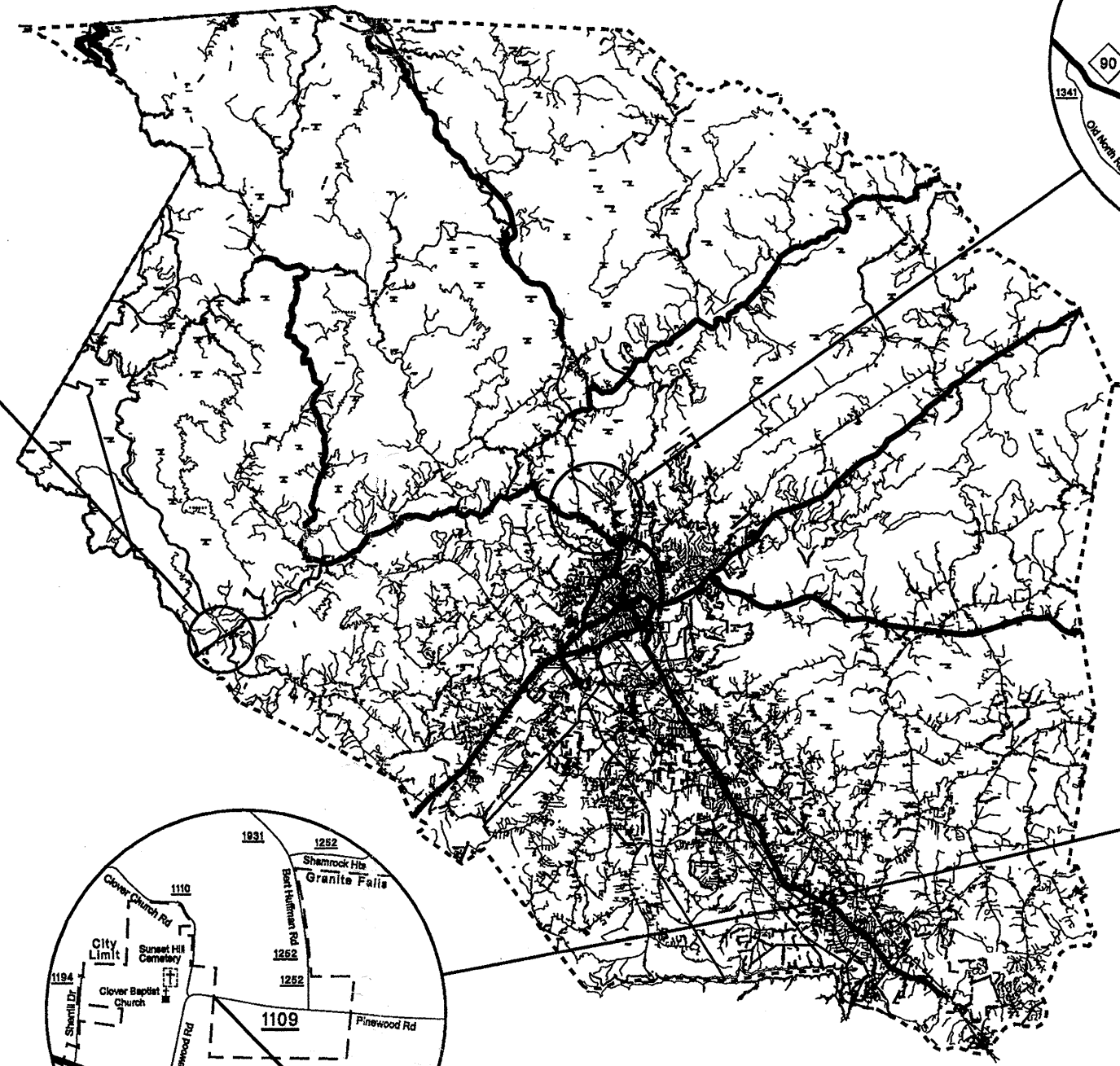
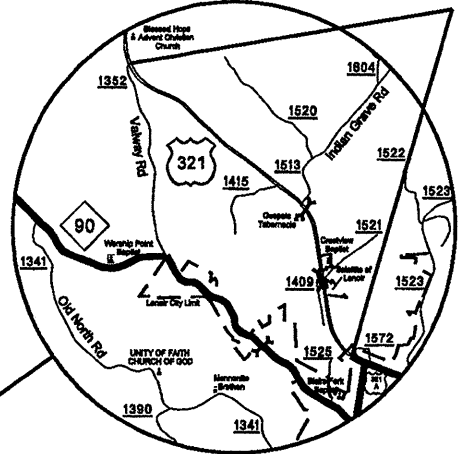
STATE OF NORTH CAROLINA
DIVISION OF HIGHWAYS

CALDWELL COUNTY

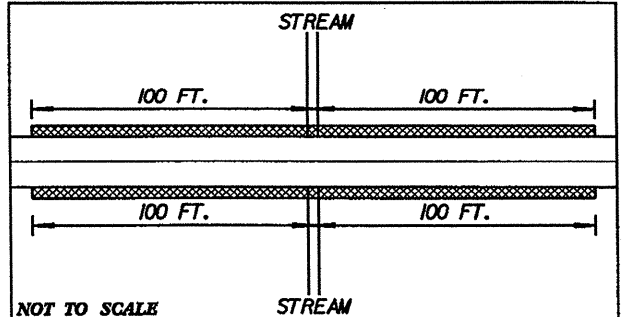
MAP #1 US 321 SBL
FROM SR 1352 TO
END OF DIVIDED HIGHWAY



MAP #4 SR 1335
FROM SR 1328 TO BURKE COUNTY LINE

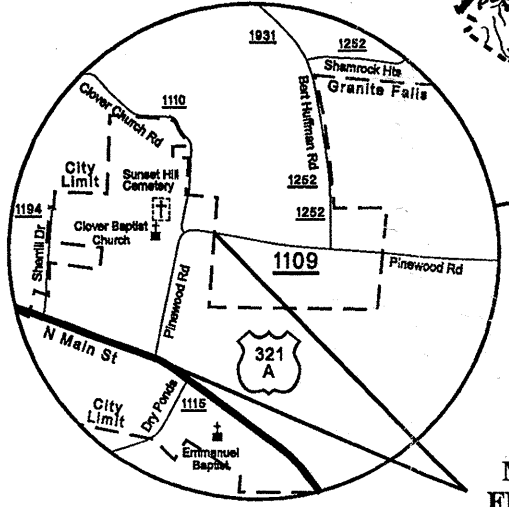


*DETAIL FOR AGGREGATE SHOULDER BORROW
AT STREAM CROSSING

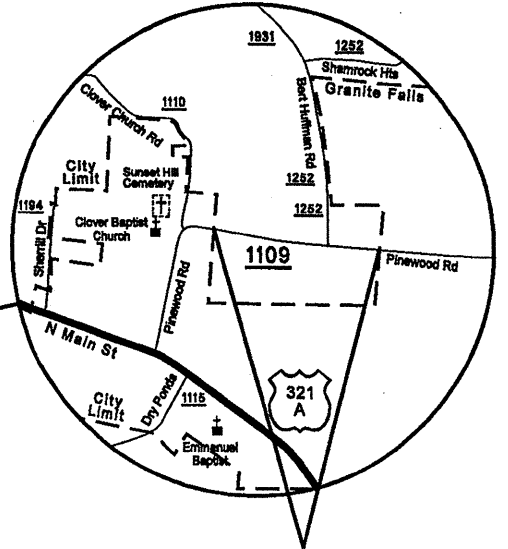


HATCHED AREA SHOWS PLACEMENT
OF AGGREGATE SHOULDER BORROW

NOTE: AGGREGATE SHOULDER BORROW TO BE PLACED
* MAP #4 APPROX. STATION 1+80 200' (SEE DETAIL)
* MAP #4 APPROX. STATION 4+50 200' (SEE DETAIL)



MAP #2 SR 1109
FROM US 321-A TO
GRANITE FALLS WCL



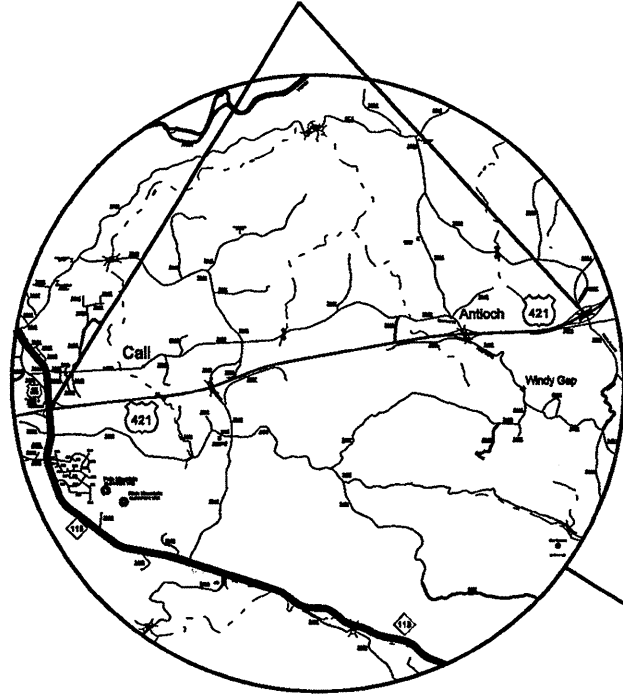
MAP #3 SR 1109
FROM GRANITE FALLS ECL
TO GRANITE FALLS WCL

8/17/99
2:\REC-2010_1459
C:\N\Documents\Projects\2011\Caldwell-Wilkes\Resurfacing\2011\Caldwell-Wilkes\Resurfacing Maps 2011.dgn
2:\REC-2010_1459
C:\N\Documents\Projects\2011\Caldwell-Wilkes\Resurfacing\2011\Caldwell-Wilkes\Resurfacing Maps 2011.dgn

8/17/99

PROJECT REFERENCE NO. 1CR10971J8	SHEET NO. 2
-------------------------------------	----------------

**MAP #5 US 421 NBL
FROM SR 2325 TO
PAVEMENT JOINT AT EXIT 282**

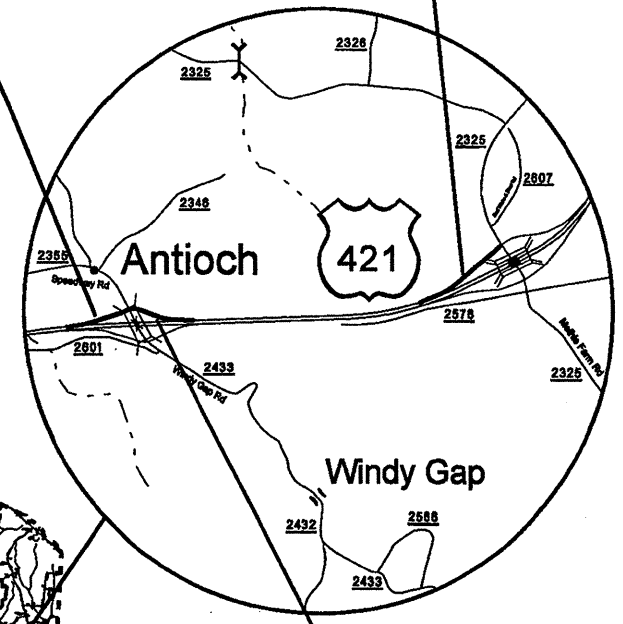


STATE OF NORTH CAROLINA
DIVISION OF HIGHWAYS

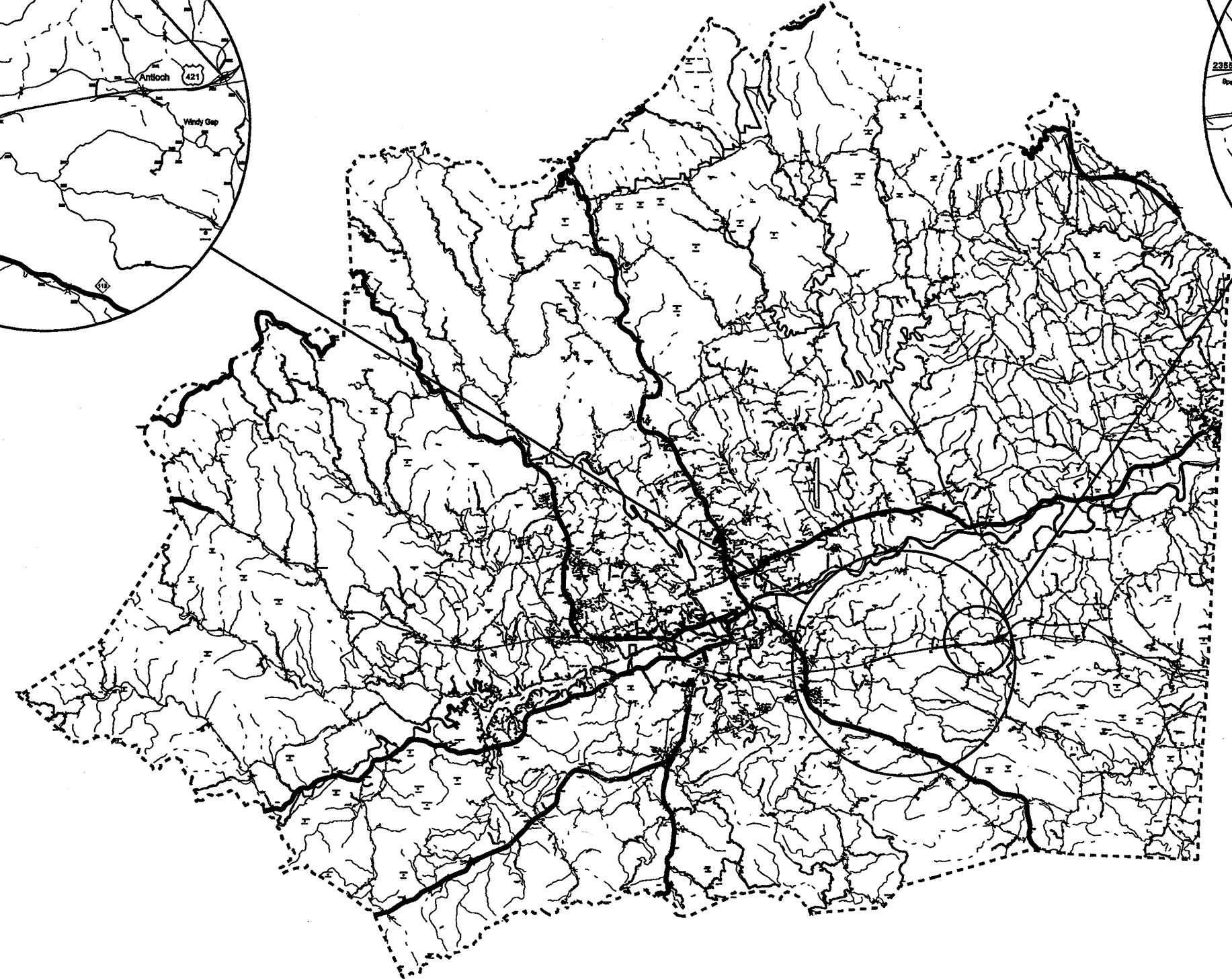
WILKES COUNTY

**MAP #8 RAMP #3
EXIT 277 ON-RAMP
FROM SR 2433 TO US 421 NORTH**

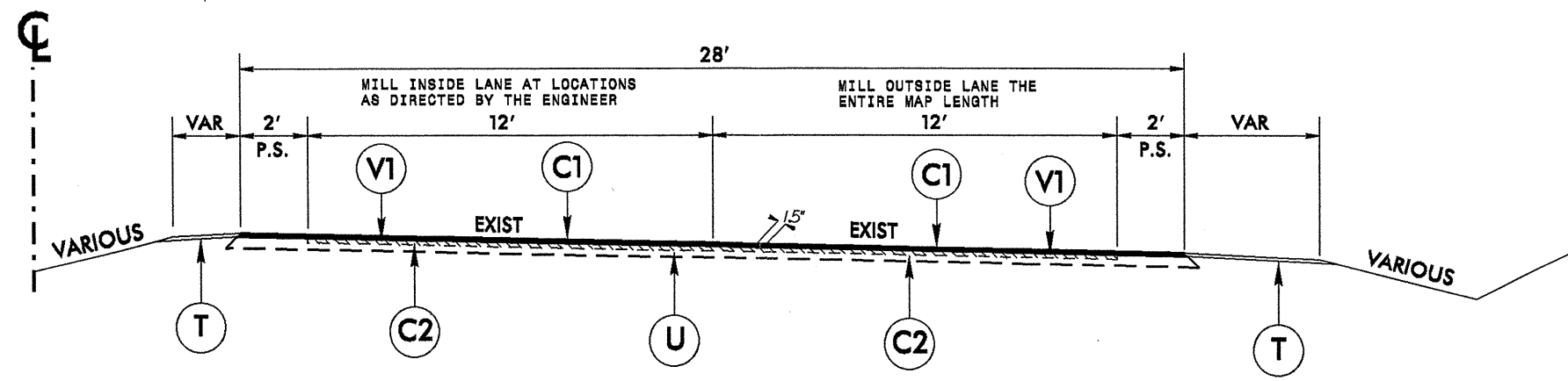
**MAP #6 RAMP #1
EXIT 276 ON-RAMP
FROM SR 2325 TO US 421 NORTH**



**MAP #7 RAMP #2
EXIT 277 OFF-RAMP
FROM US 421 NORTH TO SR 2433**

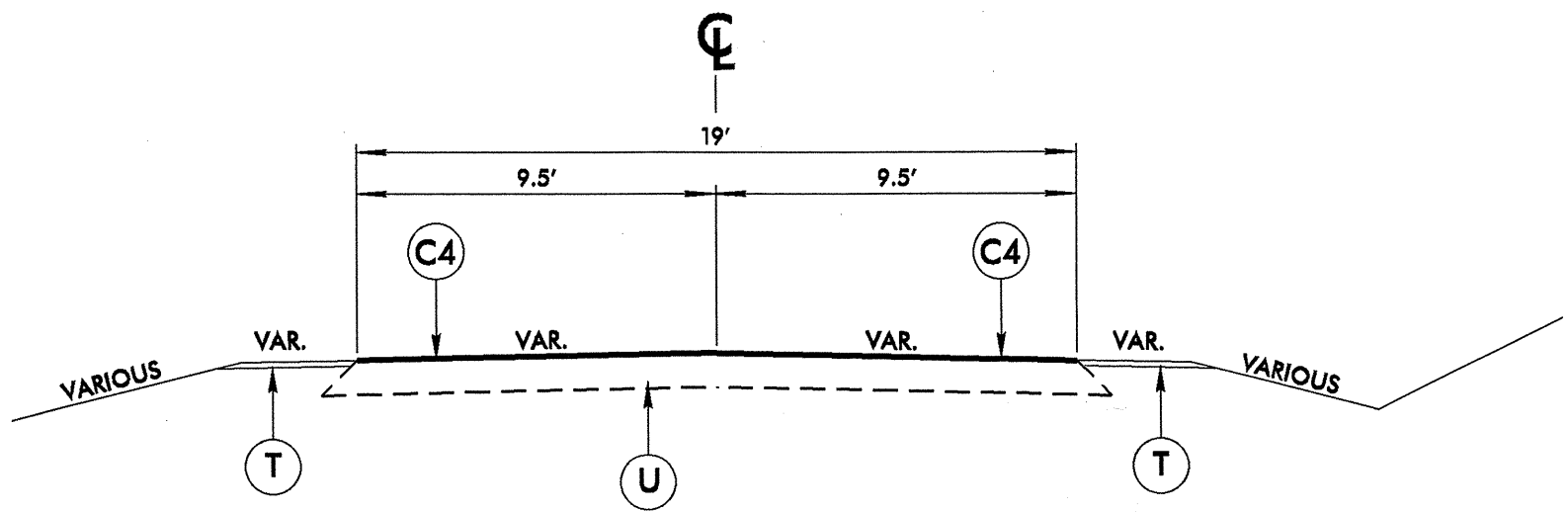


22-DEC-2010 09:45
C:\my Documents\2011\Projects\Resurfacing\2011\Calldwell-Wilkes\Calldwell-Wilkes Resurfacing Maps 2011.dgn



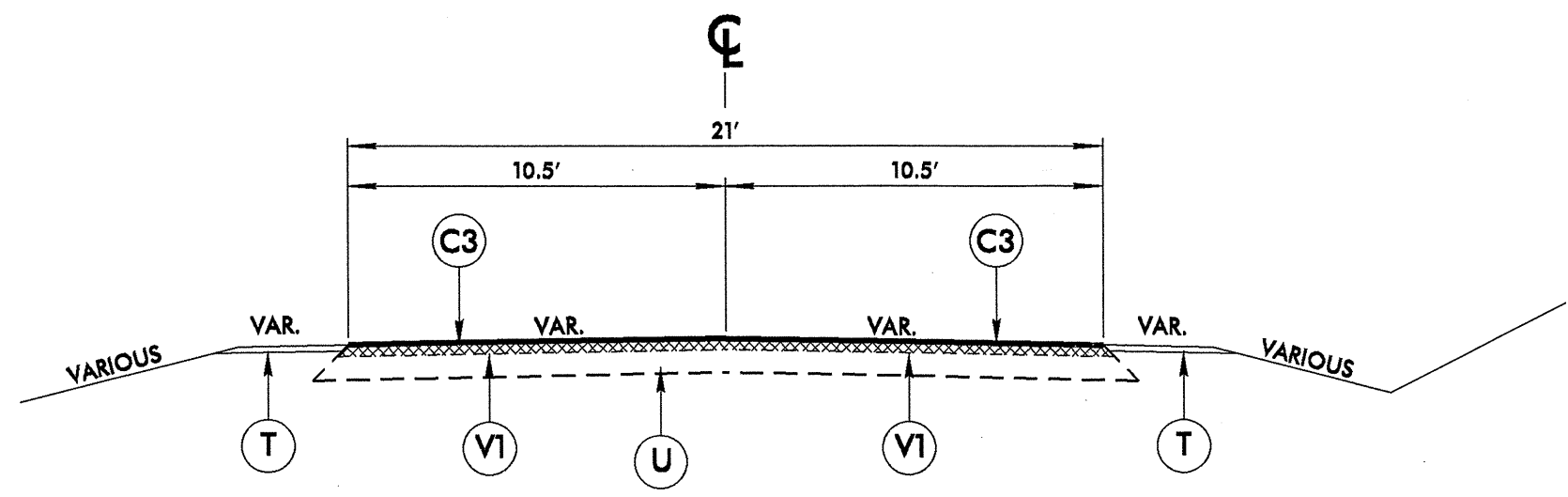
TYPICAL SECTION NO. 3

MAP 1 - US 321 SBL FROM SR 1352 TO END OF DIVIDED HIGHWAY



TYPICAL SECTION NO. 2

MAP 4 - SR 1335 FROM SR 1328 TO BURKE COUNTY LINE



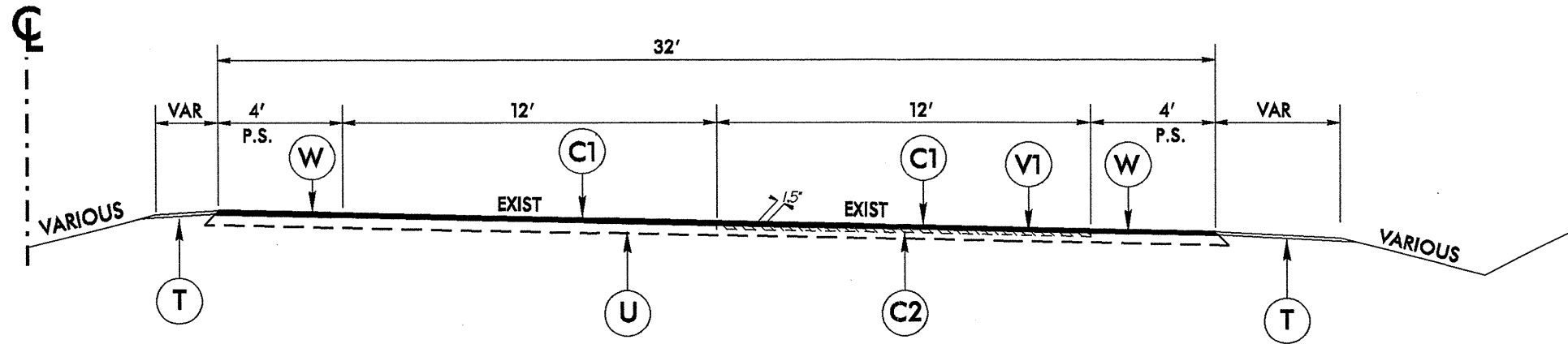
TYPICAL SECTION NO. 1

MAP 2 - SR 1109 FROM US 321-A TO GRANITE FALLS WCL
MAP 3 - SR 1109 FROM GRANITE FALLS ECL TO GRANITE FALLS WCL

PAVEMENT SCHEDULE	
C1	PROP. APPROX. 1½" ASPHALT CONCRETE SURFACE COURSE, TYPE S9.5C, AT AN AVERAGE RATE OF 168 LBS. PER SQ. YD. (OVERLAY)
C2	PROP. APPROX. 1½" ASPHALT CONCRETE SURFACE COURSE, TYPE S9.5C, AT AN AVERAGE RATE OF 168 LBS. PER SQ. YD. (MILL AND FILL)
C3	PROP. APPROX. 3" ASPHALT CONCRETE SURFACE COURSE, TYPE S9.5B, AT AN AVERAGE RATE OF 168 LBS. PER SQ. YD. IN EACH OF TWO LAYERS.
C4	PROP. APPROX. 1½" ASPHALT CONCRETE SURFACE COURSE, TYPE S9.5B, AT AN AVERAGE RATE OF 168 LBS. PER SQ. YD.
C5	PROP. APPROX. 1½" ASPHALT CONCRETE SURFACE COURSE, TYPE SF9.5A, AT AN AVERAGE RATE OF 165 LBS. PER SQ. YD.
C6	PROP. APPROX. 1" THIN LIFT HOT MIX ASPHALT, AT AN AVERAGE RATE OF 100 LBS. PER SQ. YD.
T	SHOULDER RECONSTRUCTION
U	EXISTING PAVEMENT
V1	MILLING OF EXISTING ASPHALT PAVEMENT AT DEPTH OF 1½"
V2	MILLING OF EXISTING ASPHALT PAVEMENT AT DEPTH OF 0 - 1½"
W	MILLED RUMBLE STRIPS

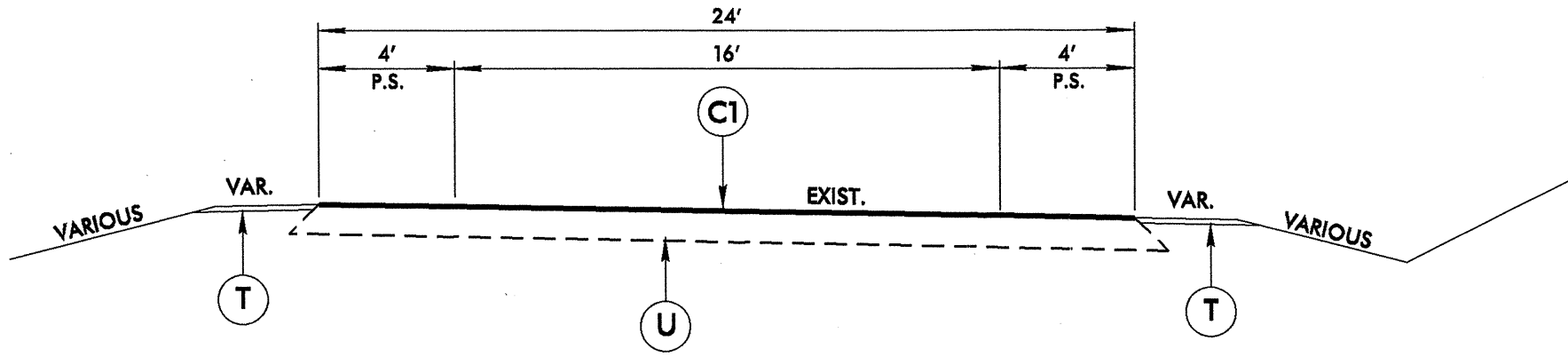
CALDWELL AND WILKES COUNTIES PRIMARY AND SECONDARY RESURFACING		
DIVISION II		
REVISIONS	INT.	DATE
N.C. DEPARTMENT of TRANSPORTATION DIVISION of HIGHWAYS DIVISION ELEVEN		SCALE: N/A DATE: 12/2010 PREPARED BY: J. L. LAWS REVIEWED BY: REVIEWED BY:

8/17/99



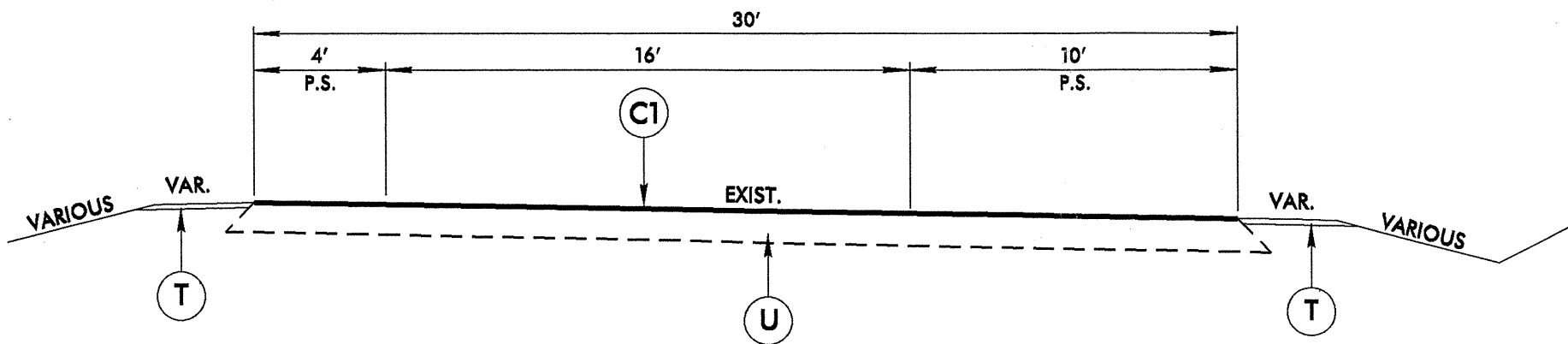
TYPICAL SECTION NO. 6

MAP 5 - US 421 NBL FROM SR 2325 TO PAVEMENT JOINT AT EXIT 282



TYPICAL SECTION NO. 5


MAP 7 - RAMP #2 EXIT 277 OFF-RAMP FROM US 421 NORTH TO SR 2433
MAP 8 - RAMP #3 EXIT 277 ON-RAMP FROM SR 2433 TO US 421 NORTH



TYPICAL SECTION NO. 4

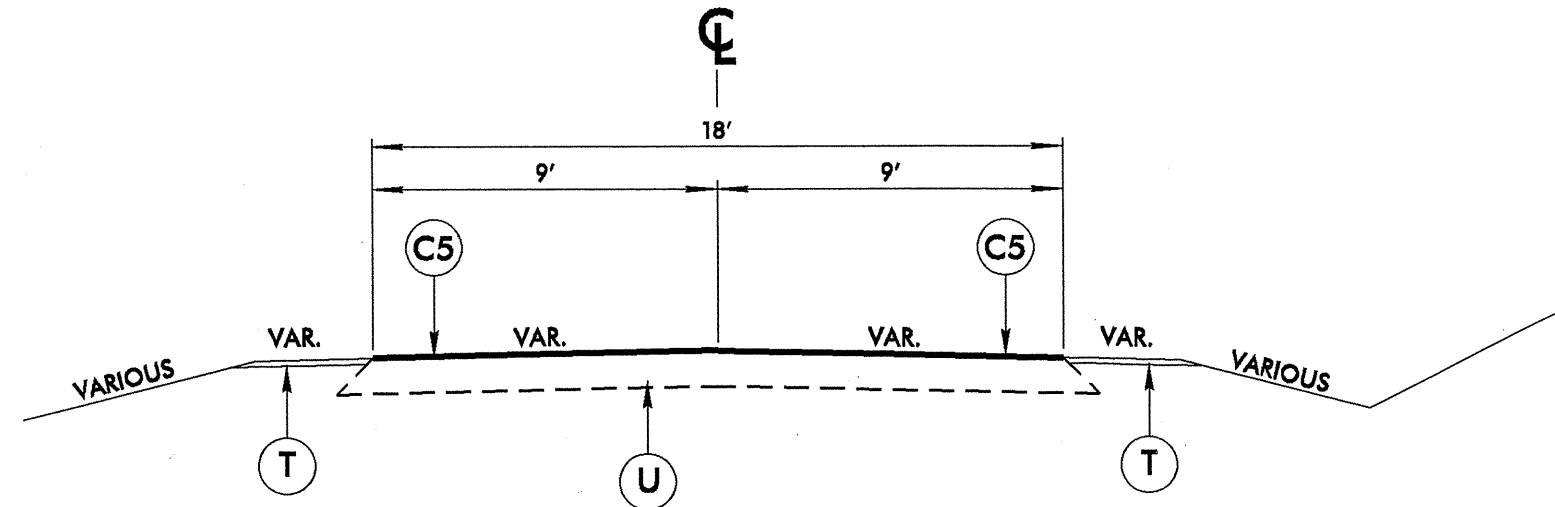
MAP 6 - RAMP #1 EXIT 276 ON-RAMP FROM SR 2325 TO US 421 NORTH

PAVEMENT SCHEDULE	
C1	PROP. APPROX. 1½" ASPHALT CONCRETE SURFACE COURSE, TYPE S9.5C, AT AN AVERAGE RATE OF 168 LBS. PER SQ. YD. (OVERLAY)
C2	PROP. APPROX. 1½" ASPHALT CONCRETE SURFACE COURSE, TYPE S9.5C, AT AN AVERAGE RATE OF 168 LBS. PER SQ. YD. (MILL AND FILL)
C3	PROP. APPROX. 3" ASPHALT CONCRETE SURFACE COURSE, TYPE S9.5B, AT AN AVERAGE RATE OF 168 LBS. PER SQ. YD. IN EACH OF TWO LAYERS.
C4	PROP. APPROX. 1½" ASPHALT CONCRETE SURFACE COURSE, TYPE S9.5B, AT AN AVERAGE RATE OF 168 LBS. PER SQ. YD.
C5	PROP. APPROX. 1½" ASPHALT CONCRETE SURFACE COURSE, TYPE S9.5A, AT AN AVERAGE RATE OF 168 LBS. PER SQ. YD.
C6	PROP. APPROX. 1" THIN LIFT HOT MIX ASPHALT, AT AN AVERAGE RATE OF 100 LBS. PER SQ. YD.
T	SHOULDER RECONSTRUCTION
U	EXISTING PAVEMENT
V1	MILLING OF EXISTING ASPHALT PAVEMENT AT DEPTH OF 1½"
V2	MILLING OF EXISTING ASPHALT PAVEMENT AT DEPTH OF 0 - 1½"
W	MILLED RUMBLE STRIPS

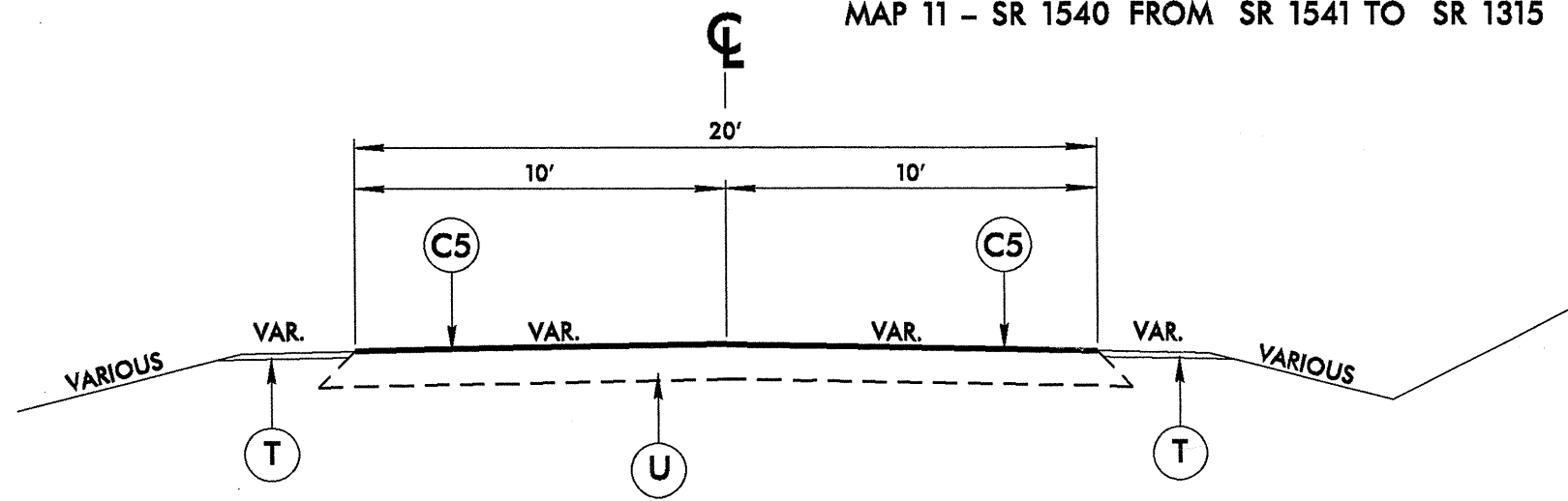
CALDWELL AND WILKES COUNTIES PRIMARY AND SECONDARY RESURFACING		
DIVISION II		
REVISIONS	INIT.	DATE
SCALE: N/A		DATE: 12/2010
PREPARED BY: J. L. LAWS		
REVIEWED BY:		
REVIEWED BY:		
N.C. DEPARTMENT of TRANSPORTATION DIVISION of HIGHWAYS DIVISION ELEVEN		

8/17/99

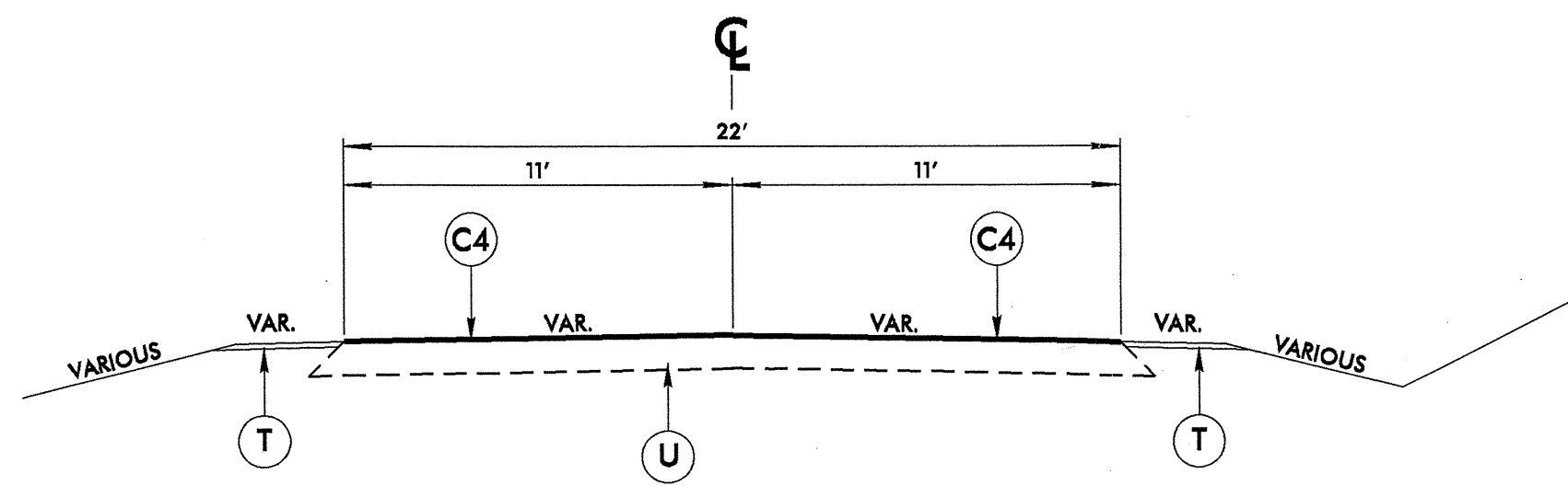
8/17/09



TYPICAL SECTION NO. 9
MAP 11 - SR 1540 FROM SR 1541 TO SR 1315



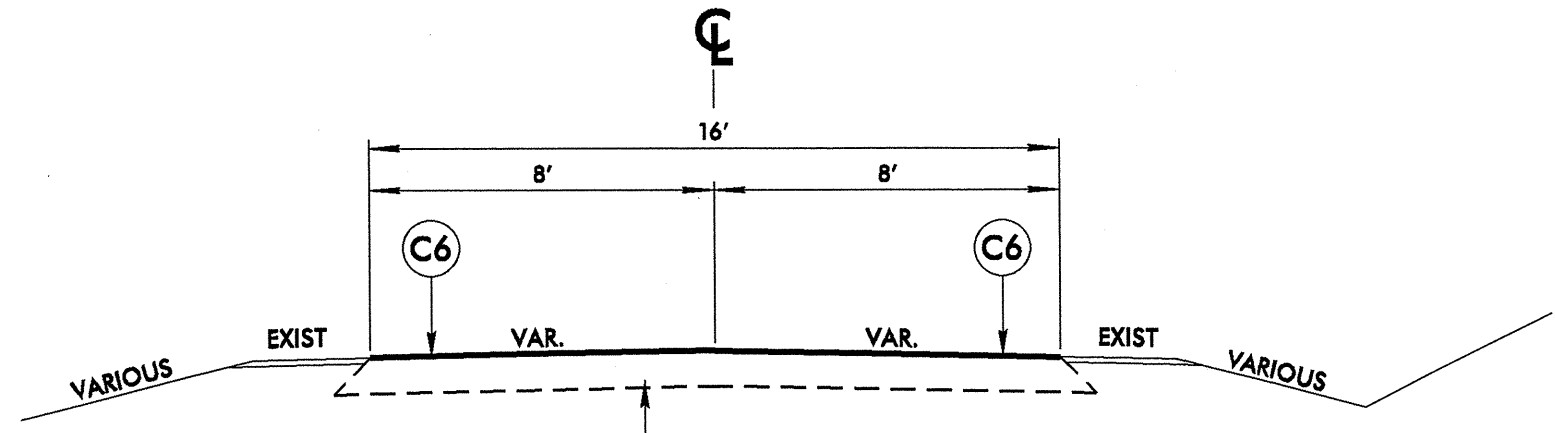
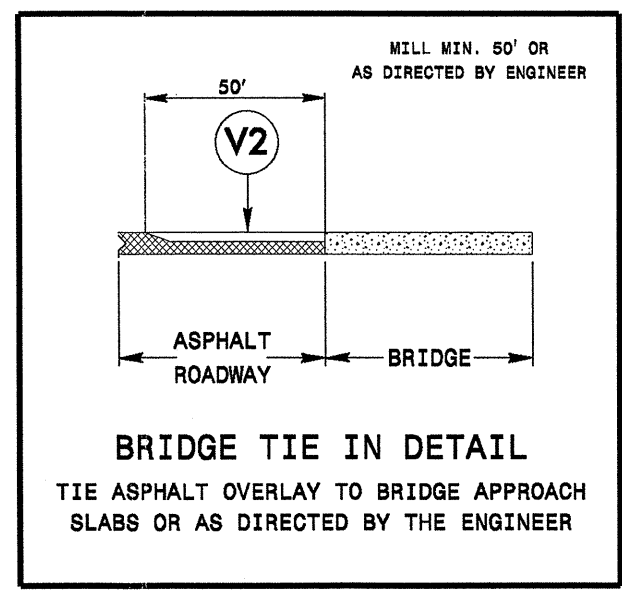
TYPICAL SECTION NO. 8
MAP 10 - SR 1541 FROM NC 18 TO SR 1540



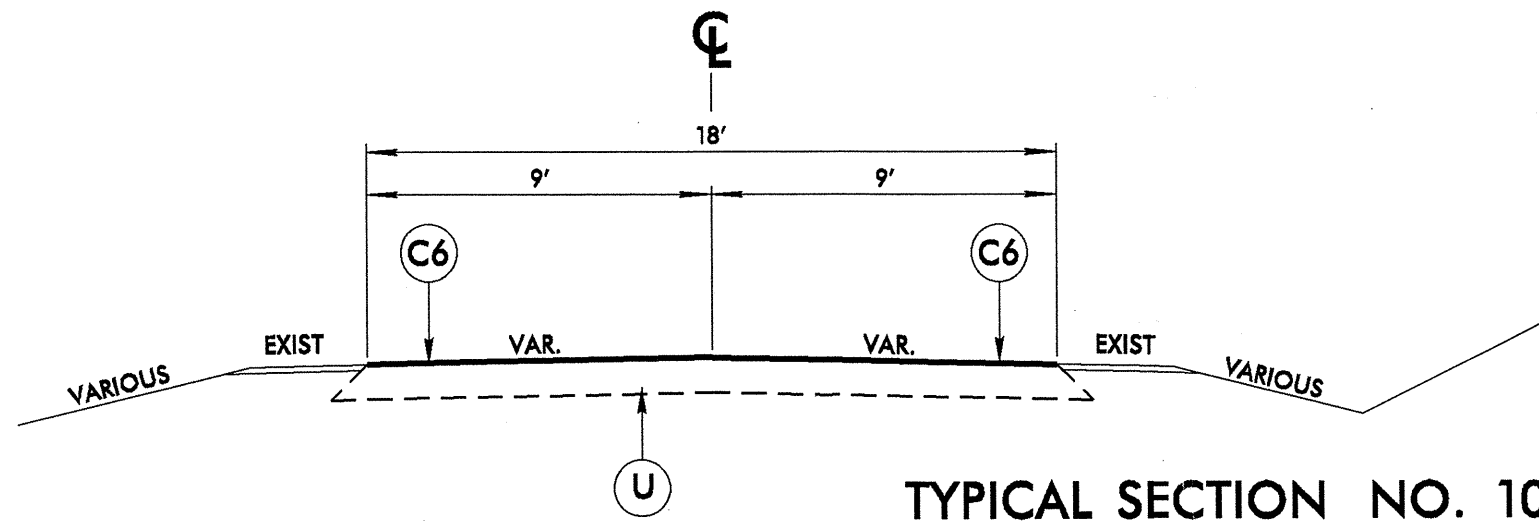
TYPICAL SECTION NO. 7
MAP 9 - SR 1500 FROM US 421 BUS. TO SR 1372

PAVEMENT SCHEDULE	
C1	PROP. APPROX. 1½" ASPHALT CONCRETE SURFACE COURSE, TYPE S9.5C, AT AN AVERAGE RATE OF 168 LBS. PER SQ. YD. (OVERLAY)
C2	PROP. APPROX. 1½" ASPHALT CONCRETE SURFACE COURSE, TYPE S9.5C, AT AN AVERAGE RATE OF 168 LBS. PER SQ. YD. (MILL AND FILL)
C3	PROP. APPROX. 3" ASPHALT CONCRETE SURFACE COURSE, TYPE S9.5B, AT AN AVERAGE RATE OF 168 LBS. PER SQ. YD. IN EACH OF TWO LAYERS.
C4	PROP. APPROX. 1½" ASPHALT CONCRETE SURFACE COURSE, TYPE S9.5B, AT AN AVERAGE RATE OF 168 LBS. PER SQ. YD.
C5	PROP. APPROX. 1½" ASPHALT CONCRETE SURFACE COURSE, TYPE SF9.5A, AT AN AVERAGE RATE OF 165 LBS. PER SQ. YD.
C6	PROP. APPROX. 1" THIN LIFT HOT MIX ASPHALT, AT AN AVERAGE RATE OF 100 LBS. PER SQ. YD.
T	SHOULDER RECONSTRUCTION
U	EXISTING PAVEMENT
V1	MILLING OF EXISTING ASPHALT PAVEMENT AT DEPTH OF 1½"
V2	MILLING OF EXISTING ASPHALT PAVEMENT AT DEPTH OF 0 - 1½"
W	MILLED RUMBLE STRIPS

CALDWELL AND WILKES COUNTIES PRIMARY AND SECONDARY RESURFACING		
DIVISION II		
REVISIONS	INIT.	DATE
SCALE: N/A		DATE: 12/2010
PREPARED BY: J. L. LAWS		
REVIEWED BY:		
REVIEWED BY:		
N.C. DEPARTMENT of TRANSPORTATION DIVISION of HIGHWAYS DIVISION ELEVEN		



TYPICAL SECTION NO. 11
MAP 14 - SR 1315 FROM SR 1549 TO SR 1550



TYPICAL SECTION NO. 10
MAP 12 - SR 2303 FROM SR 2309 TO NC 268
MAP 13 - SR 1315 FROM SR 1540 TO SR 1549

PAVEMENT SCHEDULE	
C1	PROP. APPROX. 1½" ASPHALT CONCRETE SURFACE COURSE, TYPE S9.5C, AT AN AVERAGE RATE OF 168 LBS. PER SQ. YD. (OVERLAY)
C2	PROP. APPROX. 1½" ASPHALT CONCRETE SURFACE COURSE, TYPE S9.5C, AT AN AVERAGE RATE OF 168 LBS. PER SQ. YD. (MILL AND FILL)
C3	PROP. APPROX. 3" ASPHALT CONCRETE SURFACE COURSE, TYPE S9.5B, AT AN AVERAGE RATE OF 168 LBS. PER SQ. YD. IN EACH OF TWO LAYERS.
C4	PROP. APPROX. 1½" ASPHALT CONCRETE SURFACE COURSE, TYPE S9.5B, AT AN AVERAGE RATE OF 168 LBS. PER SQ. YD.
C5	PROP. APPROX. 1½" ASPHALT CONCRETE SURFACE COURSE, TYPE S9.5A, AT AN AVERAGE RATE OF 165 LBS. PER SQ. YD.
C6	PROP. APPROX. 1" THIN LIFT HOT MIX ASPHALT, AT AN AVERAGE RATE OF 100 LBS. PER SQ. YD.
T	SHOULDER RECONSTRUCTION
U	EXISTING PAVEMENT
V1	MILLING OF EXISTING ASPHALT PAVEMENT AT DEPTH OF 1½"
V2	MILLING OF EXISTING ASPHALT PAVEMENT AT DEPTH OF 0 - 1½"
W	MILLED RUMBLE STRIPS

CALDWELL AND WILKES COUNTIES PRIMARY AND SECONDARY RESURFACING		
DIVISION II		
REVISIONS	INIT.	DATE
SCALE: N/A		DATE: 12/2010
PREPARED BY: J. L. LAWS		
REVIEWED BY:		
REVIEWED BY:		
N.C. DEPARTMENT of TRANSPORTATION DIVISION of HIGHWAYS DIVISION ELEVEN		

8/17/99

PROJECT NO.	SHEET NO.	TOTAL NO.
11CR.10141.18, 11CR.20141.18 11CR.10971.18, ETC.	9	10

SUMMARY OF QUANTITIES

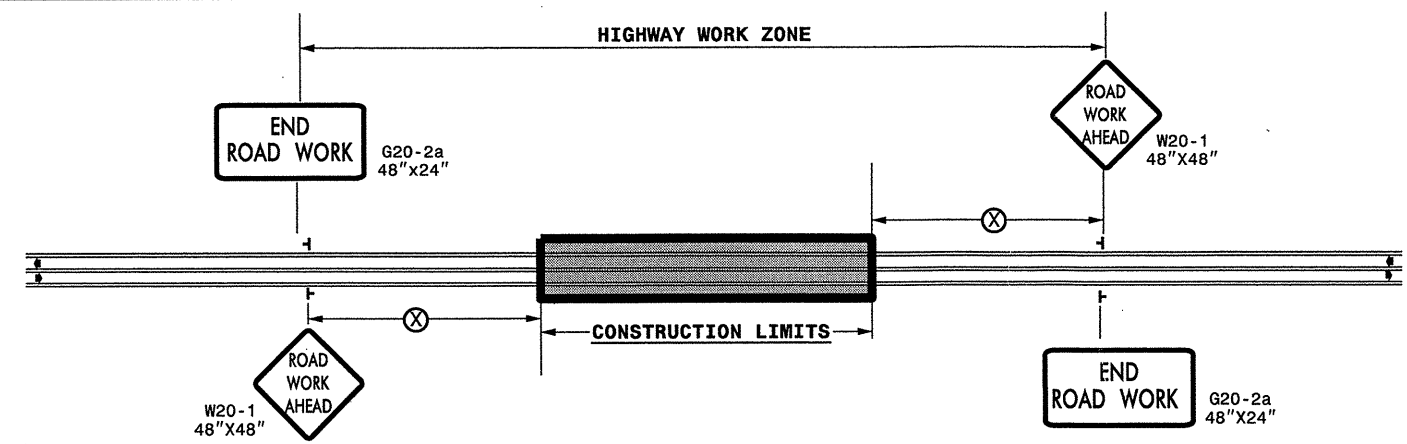
PROJECT NO	COUNTY	MAP NO	ROUTE	DESCRIPTION	TYP	FINAL SURFACE TESTING REQUIRED	LENGTH MI	WIDTH FT	BORROW CY	INCIDENTAL STONE BASE TONS	SHOULDER RECONSTRUCTION SMI	1 1/2" MILLING SY	0" TO 1.5" MILLING SY	INCIDENTAL MILLING SY	SURFACE COURSE, S9.5B TONS	SURFACE COURSE, S9.5C TONS	SURFACE COURSE, SF9.5A TONS	PG 64-22 PLANT MIX TONS	PG 70-22 PLANT MIX TONS	PATCHING EXISTING PAVEMENT TONS	THIN LIFT HMA SY	MILLED RUMBLE STRIPS (ASPHALT CEMENT CONCRETE) LF	ADJ. OF MANHOLES EA	SEED & MULCHING AC			
11CR.10141.18	Caldwell	1	US 321 SBL	FROM SR 1352 TO END OF DIVIDED HIGHWAY	3	NO	1.94	28	582	100	3.88	16,500				4,760			286	200				1.88			
TOTAL FOR MAP NO. 1							1.94		582	100	3.88	16,500				4,760			286	200					1.88		
TOTAL FOR PROJ NO. 11CR.10141.18							1.94		582	100	3.88	16,500				4,760			286	200					1.88		
11CR.20141.18	Caldwell	2	SR 1109	FROM US 321-A TO GRANITE FALLS WCL	1	NO	0.34	21	102	10	0.68	4,189			712			43		50				0.33			
TOTAL FOR MAP NO. 2							0.34		102	10	0.68	4,189			712			43		50						0.33	
		3	SR 1109	FROM GRANITE FALLS ECL TO GRANITE FALLS WCL	1	NO	0.14	21	42	10	0.28	1,725			293			18						0.14			
TOTAL FOR MAP NO. 3							0.14		42	10	0.28	1,725			293			18								0.14	
		4	SR 1335	FROM SR 1328 TO BURKE COUNTY LINE	2	NO	0.97	19	291	50	1.94		200		914			55		200				0.94			
TOTAL FOR MAP NO. 4							0.97		291	50	1.94		200		914			55		200						0.94	
TOTAL FOR PROJ NO. 11CR.20141.18							1.45		435	70	2.90	5,914	200		1,919			116		250						1.41	
11CR.10971.18	Wilkes	5	US 421 NBL	FROM SR 2325 TO PAVEMENT JOINT AT EXIT 282	6	NO	5.94	32	1,782		11.88	41,818				13,080			785				62,727	5.76			
TOTAL FOR MAP NO. 5							5.94		1,782		11.88	41,818				13,080			785						62,727		5.76
		6	RAMP 1 (EXIT 276)	ON-RAMP FROM SR 2325 TO US 421 NORTH	4	NO	0.299	30	90		0.60			100		700			42					0.36			
TOTAL FOR MAP NO. 6							0.299		90		0.60			100		700			42								0.36
		7	RAMP 2 (EXIT 277)	OFF-RAMP FROM US 421 NORTH TO SR 2433	5	NO	0.148	24	45		0.30			100		310			19					0.18			
TOTAL FOR MAP NO. 7							0.148		45		0.30			100		310			19							0.18	
		8	RAMP 3 (EXIT 277)	ON-RAMP FROM SR 2433 TO US 421 NORTH	5	NO	0.311	24	93		0.62			100		470			28					0.38			
TOTAL FOR MAP NO. 8							0.311		93		0.62			100		470			28							0.38	
TOTAL FOR PROJ NO. 11CR.10971.18							6.698		2,010		13.40	41,818		300		14,560			874					62,727		6.68	
11CR.20971.18	Wilkes	9	SR 1500	FROM US 421 BUS. TO SR 1372	7	NO	1.89	22	420		2.80				2,200			132					3	1.35			
TOTAL FOR MAP NO. 9							1.89		420		2.80				2,200			132							3	1.35	
		10	SR 1541	FROM NC 18 TO SR 1540	8	NO	2.2	20	660		4.40					2,250		146						2.10			
TOTAL FOR MAP NO. 10							2.2		660		4.40					2,250		146								2.10	
		11	SR 1540	FROM SR 1541 TO SR 1315	9	NO	1.02	18	306		2.04			30		925		60						1.00			
TOTAL FOR MAP NO. 11							1.02		306		2.04			30		925		60								1.00	
		12	SR 2303	FROM SR 2309 TO NC 268	10	NO	3	18										117				31,680.00					
TOTAL FOR MAP NO. 12							3												117					31,680.00			
		13	SR 1315	FROM SR 1540 TO SR 1549	10	NO	1.67	18										65				17,636.00					
TOTAL FOR MAP NO. 13							1.67											65						17,636.00			
		14	SR 1315	FROM SR 1549 TO SR 1550	11	NO	0.68	16										24				6,382.00					
TOTAL FOR MAP NO. 14							0.68											24						6,382.00			
TOTAL FOR PROJ NO. 11CR.20971.18							10.46		1,386		9.24			30	2,200		3,175	544						55,698.00	3	4.45	
GRAND TOTAL							20.548		4,413	170	29.42	64,232	200	330	4,119	19,320	3,175	660	1,160	450		55,698.00	62,727	3	14.42		

PROJECT NO.	SHEET NO.	TOTAL NO.
11CR.10141.18, 11CR.20141.18 11CR.10971.18, ETC.	10	10

THERMOPLASTIC AND PAINT QUANTITIES

PROJECT NO	COUNTY	MAP NO	ROUTE	DESCRIPTION	4810000000-E		4815000000-E		4825000000-E	4830000000-E	4835000000-E	4840000000-N		4845000000-N				4905000000-N		
					4" WHITE PAINT LF	4" YELLOW PAINT LF	6" WHITE PAINT LF	6" YELLOW PAINT LF	12" WHITE PAINT LF	16" WHITE PAINT LF	24" WHITE PAINT LF	PAINT MSG RXR EA	PAINT MSG SCHOOL EA	PAINT LT ARROW EA	PAINT STR ARROW EA	PAINT STR & RT ARROW EA	PAINT RT ARROW EA	PAINT STR & LT ARROW EA	SNOW PLOWABLE MARKERS EA	
11CR.10141.18	Caldwell	1	US 321 SBL	FROM SR 1352 TO END OF DIVIDED HIGHWAY	30,408	20,486								12	14	2			180	
TOTAL FOR MAP NO. 1					30,408	20,486								12	14	2			180	
TOTAL FOR PROJ NO. 11CR.10141.18					30,408	20,486								12	14	2			180	
					50,894															28
11CR.20141.18	Caldwell	2	SR 1109	FROM US 321-A TO GRANITE FALLS WCL	7,180	7,180														
TOTAL FOR MAP NO. 2					7,180	7,180														
		3	SR 1109	FROM GRANITE FALLS ECL TO GRANITE FALLS WCL	2,957	2,957														
TOTAL FOR MAP NO. 3					2,957	2,957														
		4	SR 1335	FROM SR 1328 TO BURKE COUNTY LINE	20,874	20,874														
TOTAL FOR MAP NO. 4					20,874	20,874														
TOTAL FOR PROJ NO. 11CR.20141.18					31,011	31,011														
					62,022															
11CR.10971.18	Wilkes	5	US 421 NBL	FROM SR 2325 TO PAVEMENT JOINT AT EXIT 282			78,408	62,727	5,300										520	
TOTAL FOR MAP NO. 5							78,408	62,727	5,300											520
		6	RAMP 1 (EXIT 276)	ON-RAMP FROM SR 2325 TO US 421 NORTH			3,157	2,870						3						
TOTAL FOR MAP NO. 6							3,157	2,870						3						
		7	RAMP 2 (EXIT 277)	OFF-RAMP FROM US 421 NORTH TO SR 2433			2,440	1,563						1			1			
TOTAL FOR MAP NO. 7							2,440	1,563						1			1			
		8	RAMP 3 (EXIT 277)	ON-RAMP FROM SR 2433 TO US 421 NORTH			3,880	1,950						3						
TOTAL FOR MAP NO. 8							3,880	1,950						3						
TOTAL FOR PROJ NO. 11CR.10971.18							87,885	69,110	5,300					7			1			520
							156,995													8
11CR.20971.18	Wilkes	9	SR 1500	FROM US 421 BUS. TO SR 1372	39,917	39,917								1				3	1	
TOTAL FOR MAP NO. 9					39,917	39,917								1				3	1	125
		10	SR 1541	FROM NC 18 TO SR 1540	47,344	47,344														
TOTAL FOR MAP NO. 10					47,344	47,344														
		11	SR 1540	FROM SR 1541 TO SR 1315	21,542	21,542														
TOTAL FOR MAP NO. 11					21,542	21,542														
		12	SR 2303	FROM SR 2309 TO NC 268	63,360	63,360				50	125	2	12							
TOTAL FOR MAP NO. 12					63,360	63,360				50	125	2	12							
		13	SR 1315	FROM SR 1540 TO SR 1549	35,270	34,270														
TOTAL FOR MAP NO. 13					35,270	34,270														
		14	SR 1315	FROM SR 1549 TO SR 1550	14,362	14,362														
TOTAL FOR MAP NO. 14					14,362	14,362														
TOTAL FOR PROJ NO. 11CR.20971.18					221,795	220,795				50	187	2	12	1			3	1	125	
					442,590															5
GRAND TOTAL					283,214	272,292	87,885	69,110	5,300	50	187	2	12	20	14	2	4	1	825	
					555,506		156,995													41

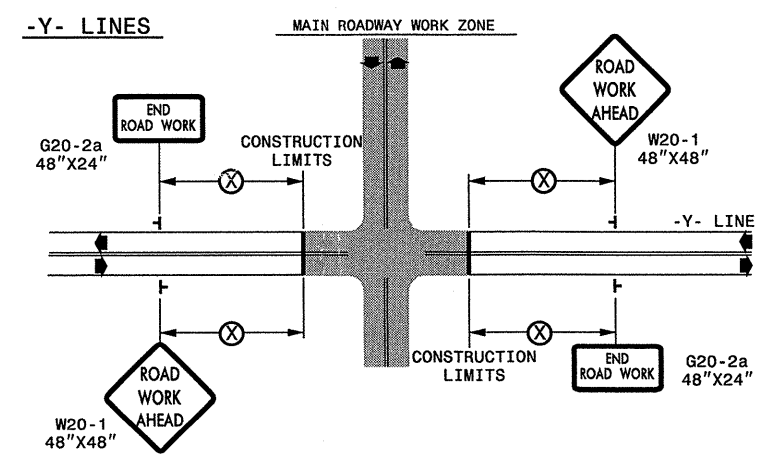
TWO-WAY UNDIVIDED ** (L-LINES)



POSTED SPEED LIMIT (M.P.H.)	RECOMMENDED MINIMUM SIGN SPACING
≤ 50	500'
≥ 55	1000'

STATE OF NORTH CAROLINA
DEPT. OF TRANSPORTATION
DIVISION OF HIGHWAYS
RALEIGH, N.C.

ROADWAYS INTERSECTING ALONG 2 WAY UNDIVIDED WORK ZONE (Y-LINES)



GENERAL NOTES

- USE FLUORESCENT ORANGE SHEETING (TYPE VII OR HIGHER) ON ALL ADVANCED WORK ZONE SIGNS.
- DO NOT INSTALL ADVANCE WARNING SIGNS MORE THAN 3 DAYS PRIOR TO BEGINNING OF WORK.
- SIGNS SHOWN ARE REQUIRED FOR WORK ZONES THAT WILL REMAIN IN EFFECT OVERNIGHT. FOR SHORT-TERM DAILY MAINTENANCE TYPE OPERATIONS, THIS SIGNING APPLICATION IS OPTIONAL; MAY USE ONLY APPLICABLE ROADWAY STANDARD DRAWINGS INSTEAD. HOWEVER, IF THIS SIGNING APPLICATION IS USED, SIGNS MAY BE PORTABLE MOUNTED.
- ALL SIGN SPACING DIMENSIONS ARE APPROXIMATE, FIELD ADJUST AS NECESSARY OR AS DIRECTED.
- USE 3LB STEEL U-CHANNEL POST OR 4" X 4" WOOD POST FOR ALL WORK ZONE SIGNS. 3LB STEEL U-CHANNEL POSTS MUST MEET THE REQUIREMENTS OF STANDARD SPECIFICATION SECTION 1094-1(B), MAY BE GALVANIZED STEEL, OR MAY BE PAINTED GREEN BY THE POST MANUFACTURER. SQUARE STEEL TUBING POSTS HAVING EQUIVALENT STRENGTH OF THE 3 LB STEEL U-CHANNEL POST ARE ALSO ACCEPTABLE FOR USE. ERECT SIGNS PER ROADWAY STANDARD DRAWING 1110.01. PAYMENT FOR WOOD POSTS, 3LB STEEL U-CHANNEL AND SQUARE STEEL TUBING POSTS WITH SIGNS WILL BE MADE ACCORDING TO STANDARD SPECIFICATION "WORK ZONE SIGNS" SECTION 1110.
- WHEN NECESSARY, USE SPLICING IN ACCORDANCE WITH ROADWAY STANDARD DRAWING NO. 1110.01. REMOVE ENTIRE POST WHEN REMOVING SIGNS WITH SPLICED POSTS.
- DO NOT BACK BRACE SIGN SUPPORTS.
- ** TWO-WAY UNDIVIDED ADVANCE WARNING SIGN CONFIGURATION MAY BE USED ON URBAN MULTI-LANE FACILITIES WHERE CONDITIONS LIMIT THE USE OF DUAL MOUNTED SIGNS AS DETERMINED BY THE ENGINEER.

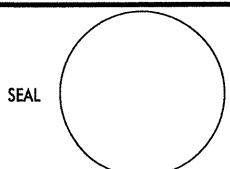
LEGEND

┆ STATIONARY SIGN

◀ DIRECTION OF TRAFFIC FLOW

DETAIL DRAWING FOR
TWO-WAY UNDIVIDED
WORK ZONE WARNING SIGNS

SHEET 1 OF 1

APPROVED: _____	DATE: _____
	
DETAIL DRAWING FOR TWO-WAY UNDIVIDED AND URBAN FREEWAYS ADVANCED WORK ZONE WARNING SIGNS	
SCALE: NONE	REVISIONS
DATE: _____	7-98 10/01
DWG. BY: _____	10-98 03/04
DESIGN BY: _____	01/01 11/04
REVIEWED BY: _____	CADD FILE

23-DEC-2010 10:05
 C:\DOT\DESIGN\GROUPS-WZ\TCC\M&S Division\Share\Resur\facng\2011\Resur\facng\2011\Western\2011\Div\11\202\ICR10141.18x4.2way_Undiv.& Urban_Fr.wys_stationary.dgn
 snp.een AT WZTCC244733

