

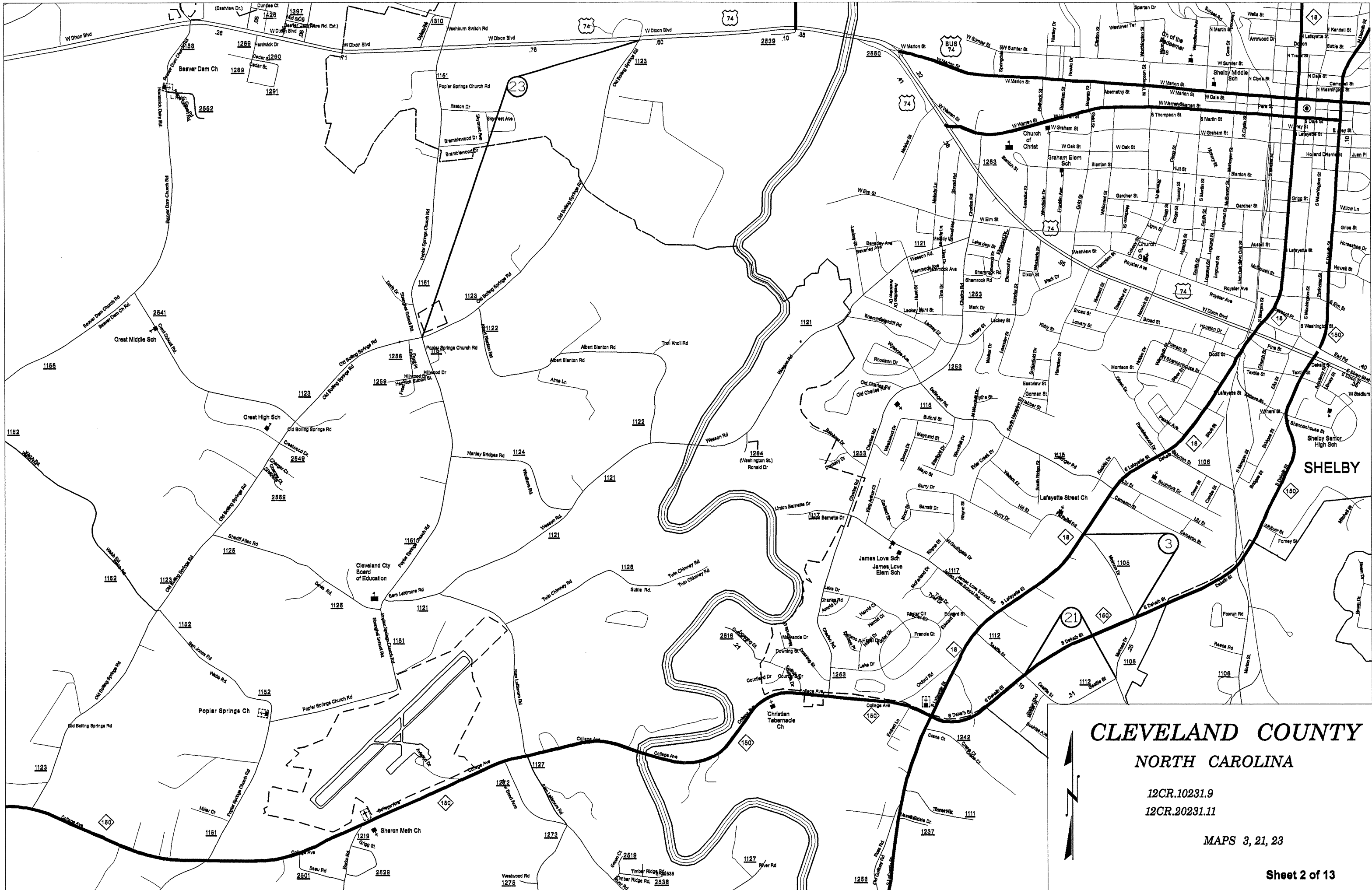


CLEVELAND COUNTY
NORTH CAROLINA

12CR.10231.9
12CR.20231.11

MAP 6





CLEVELAND COUNTY
NORTH CAROLINA

12CR.10231.9
12CR.20231.11

MAPS 3, 21, 23



CLEVELAND COUNTY
NORTH CAROLINA

12CR-10231.9
 12CR-20231.11

MAPS 7, 8, 10, 17, 18

Sheet 3 of 13



CLEVELAND COUNTY

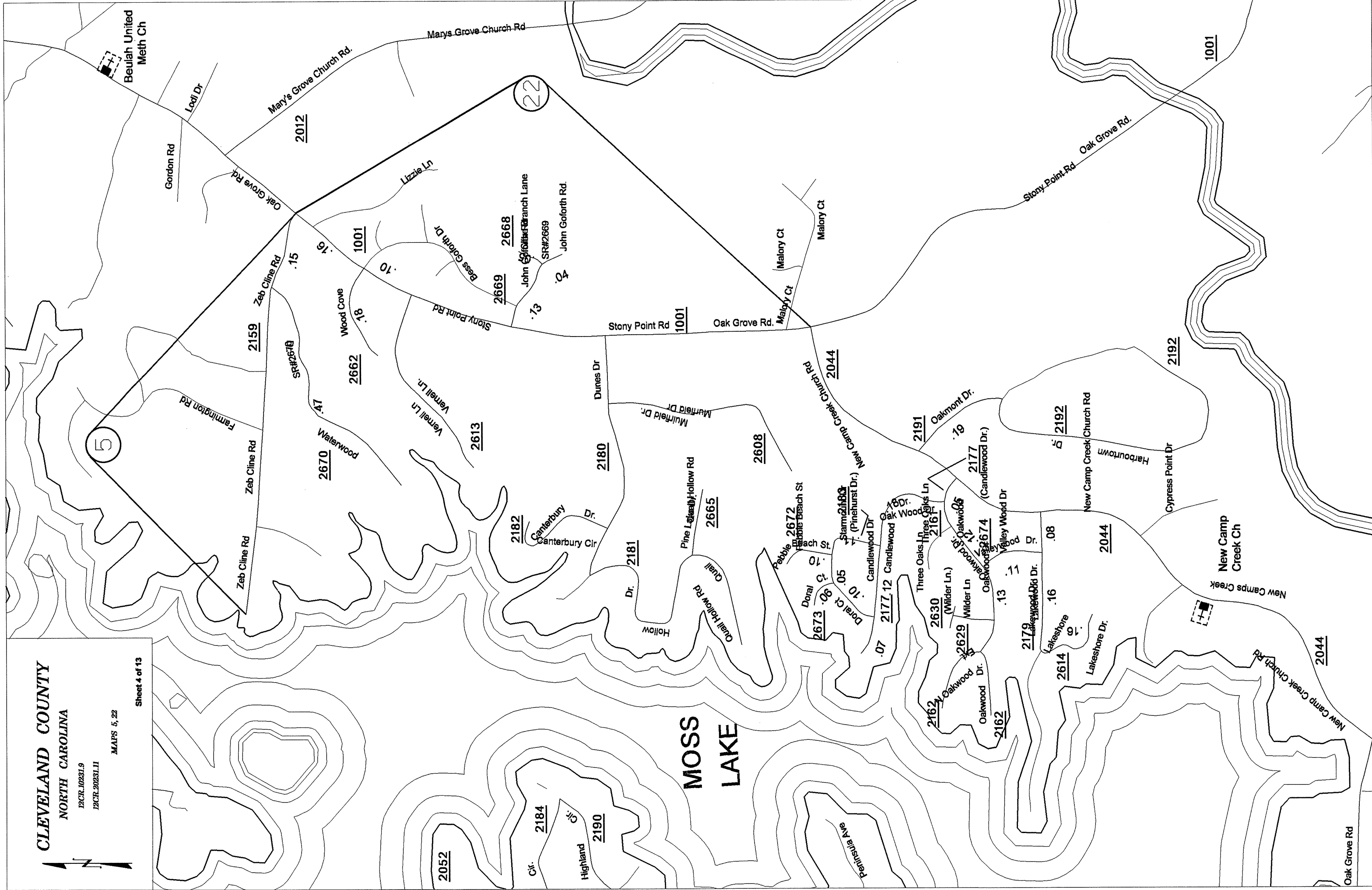
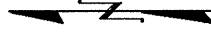
NORTH CAROLINA

12CR-10231.9

12CR-20231.11

MAPS 5, 22

Sheet 4 of 13



CLEVELAND COUNTY

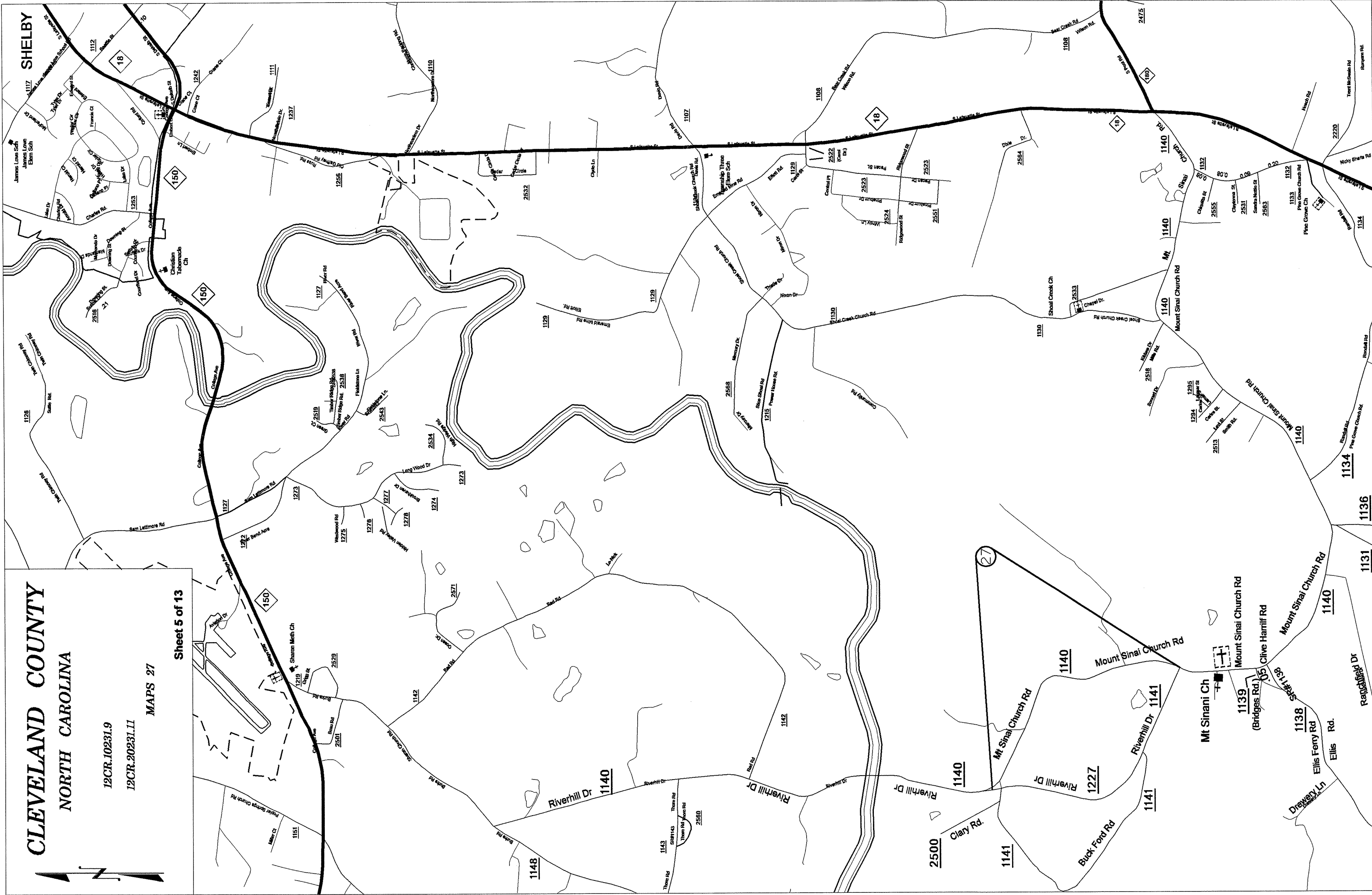
NORTH CAROLINA

12CR.10231.9

12CR-20231.11

MAPS 27

Sheet 5 of 13

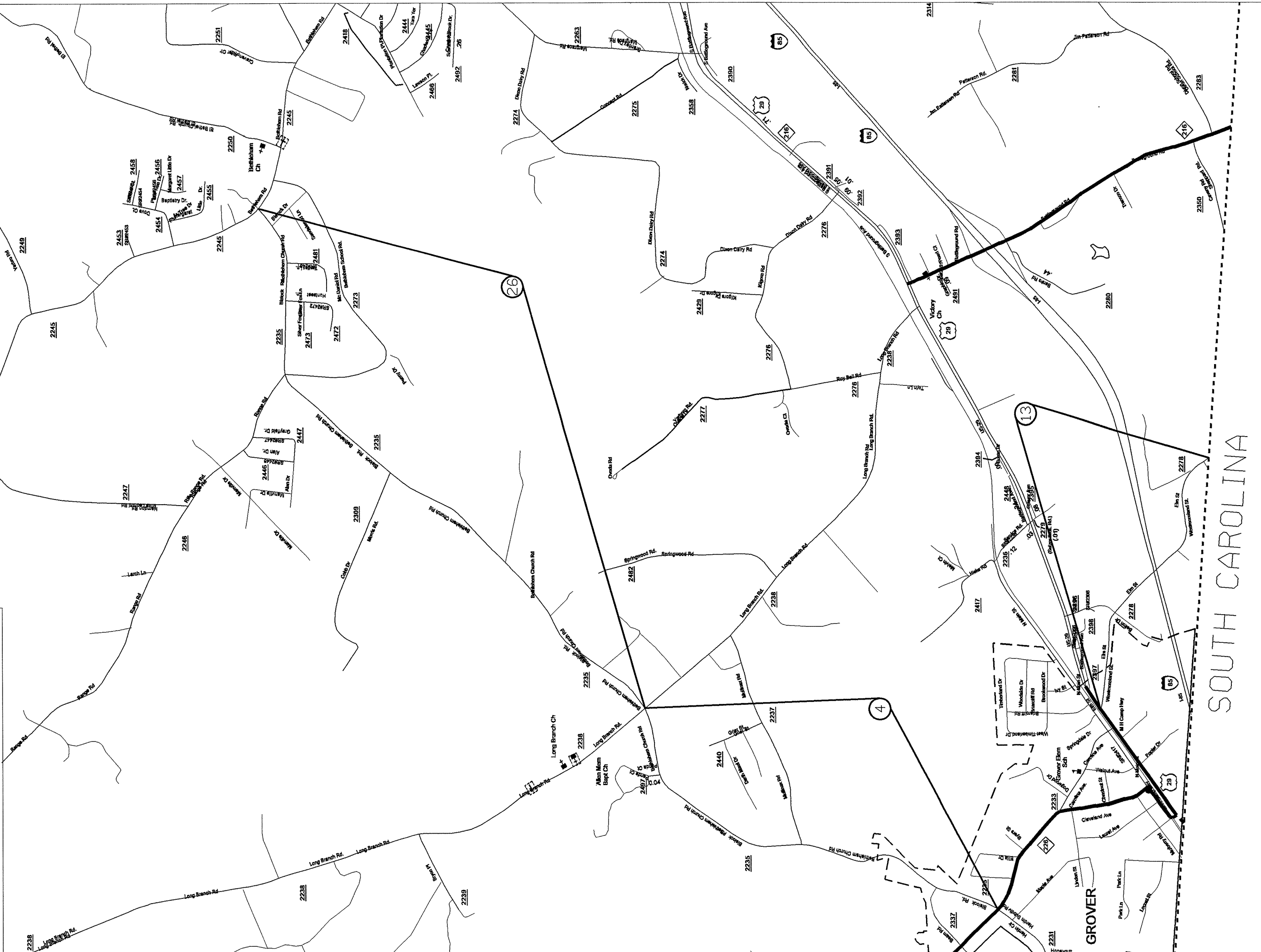


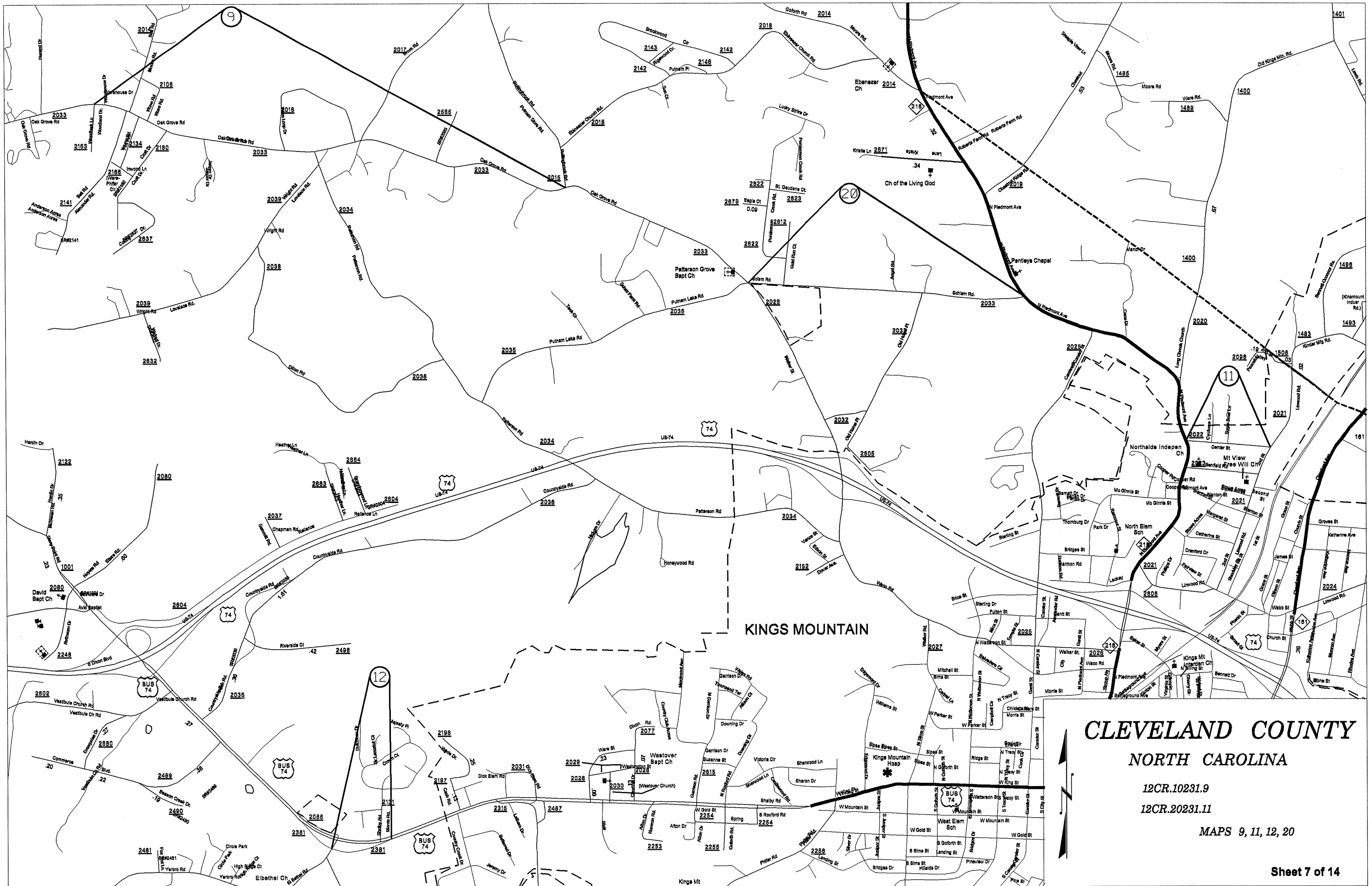
CLEVELAND COUNTY
NORTH CAROLINA

12CR.10231.9
12CR.20231.11

MAPS 4, 13, 26

Sheet 6 of 13

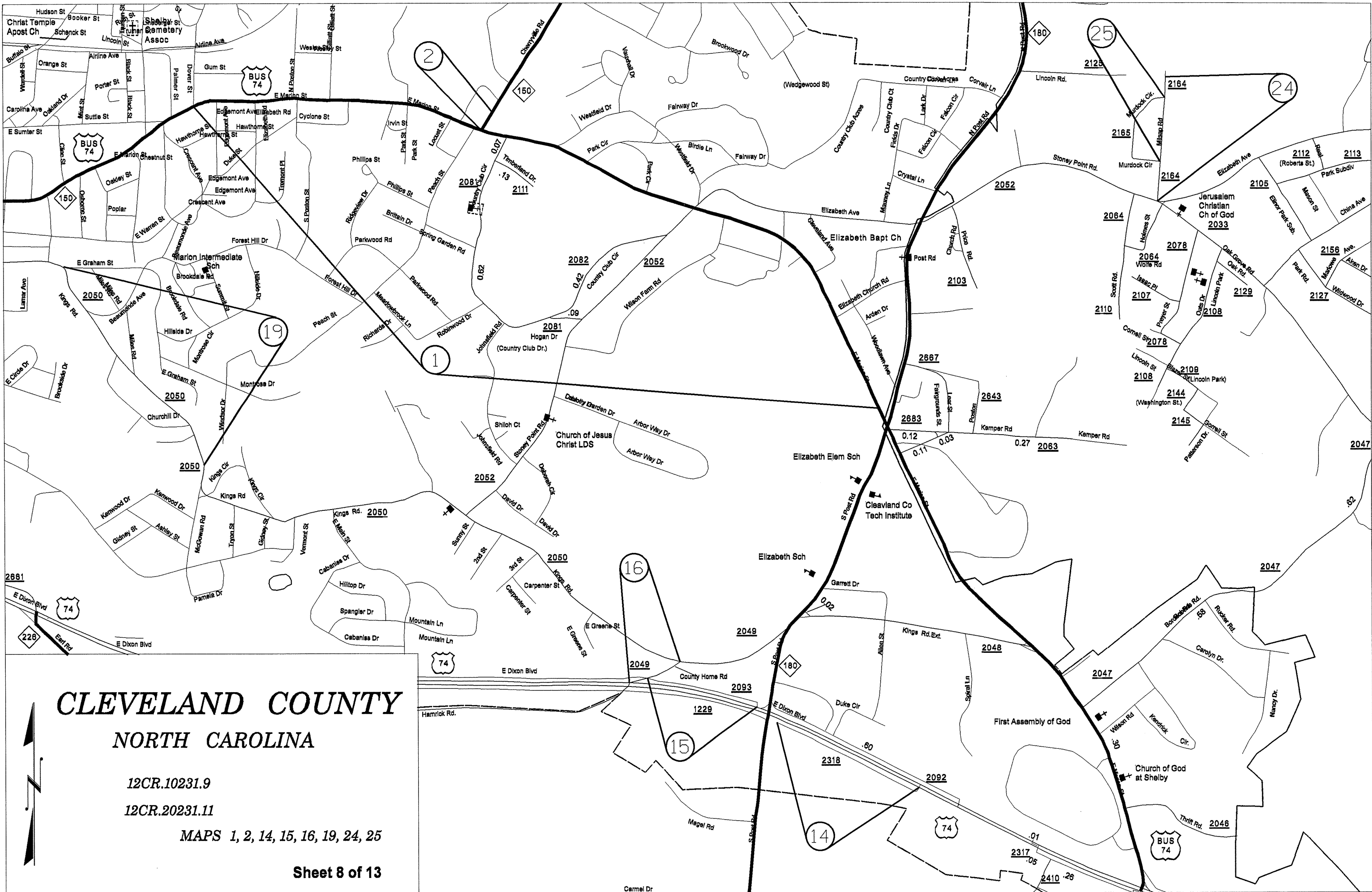




CLEVELAND COUNTY NORTH CAROLINA

12CR.10231.9
12CR.20231.11

MAPS 9, 11, 12, 20



CLEVELAND COUNTY NORTH CAROLINA

12CR.10231.9

12CR.20231.11

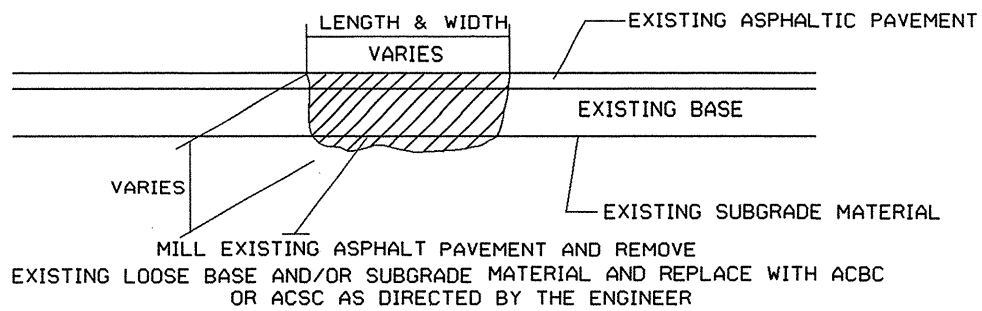
MAPS 1, 2, 14, 15, 16, 19, 24, 25

Sheet 8 of 13

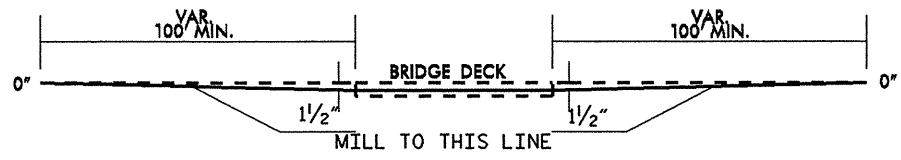


PAVEMENT SCHEDULE	
Y	SHOULDER RECONSTRUCTION
C1	PROP. APPROX. 1½" ASPHALT CONCRETE SURFACE COURSE, TYPE S9.5B, AT AN AVERAGE RATE OF 168 LBS. PER SQ. YD.
C2	PROP. APPROX. 1½" ASPHALT CONCRETE SURFACE COURSE, TYPE S9.5C, AT AN AVERAGE RATE OF 168 LBS. PER SQ. YD.
C3	PROP. APPROX. 2" ASPHALT CONCRETE SURFACE COURSE, TYPE S12.5C, AT AN AVERAGE RATE OF 224 LBS. PER SQ. YD.
E1	PROP. APPROX. 5.5" ASPHALT CONCRETE BASE COURSE, TYPE B25.0B, AT AN AVERAGE RATE OF 627 LBS. PER SQ. YD.
E2	PROP. APPROX. 5" ASPHALT CONCRETE BASE COURSE, TYPE B25.0C, AT AN AVERAGE RATE OF 570 LBS. PER SQ. YD.
V1	MILL ASPHALT PAVEMENT APPROX. 2"
V2	MILL ASPHALT PAVEMENT APPROX. 1½"
V3	MILL ASPHALT PAVEMENT APPROX. 3" AS DIRECTED BY ENGINEER
V4	MILL ASPHALT PAVEMENT APPROX. 5" AS DIRECTED BY ENGINEER

PROJ. REFERENCE NO.	SHEET NO.	TOTAL SHEETS
CLEVELAND COUNTY 2011	9 OF 13	
STATE PROJ. NO.	F.A. PROJ. NO.	DESCRIPTION
12CR.10231.9		
12CR.20231.11		

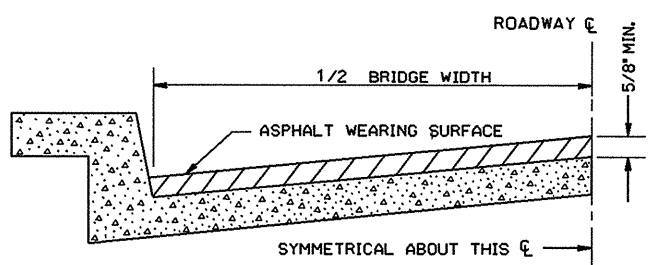


PATCHING EXISTING PAVEMENT



BRIDGE PROFILE

MILL BRIDGE APPROACHES TO CONCRETE BRIDGE DECK AND RESURFACE WITH SURFACE COURSE S9.5B or C AS DIRECTED BY THE ENGINEER



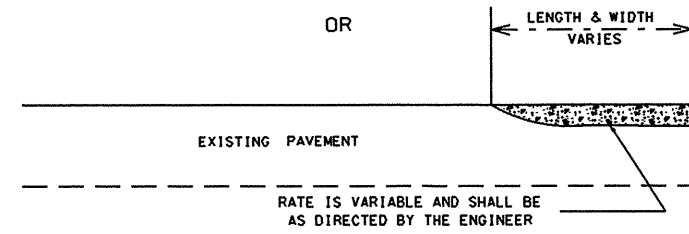
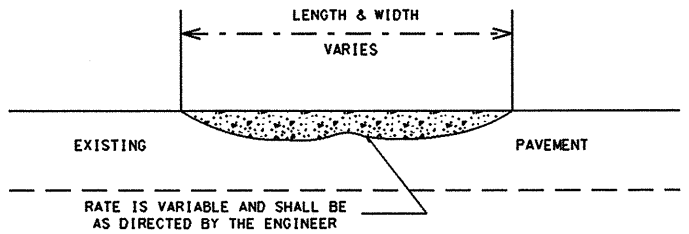
BRIDGE HALF TYPICAL SECTION

FOR BRIDGES WITH FLOOR DRAINS, CARE SHALL BE EXERCISED IN PLACING THE WEARING SURFACE AROUND FLOOR DRAINS SO AS NOT TO HINDER EFFECTIVE DRAINAGE. ALL DRAINS SHALL BE LEFT OPEN.

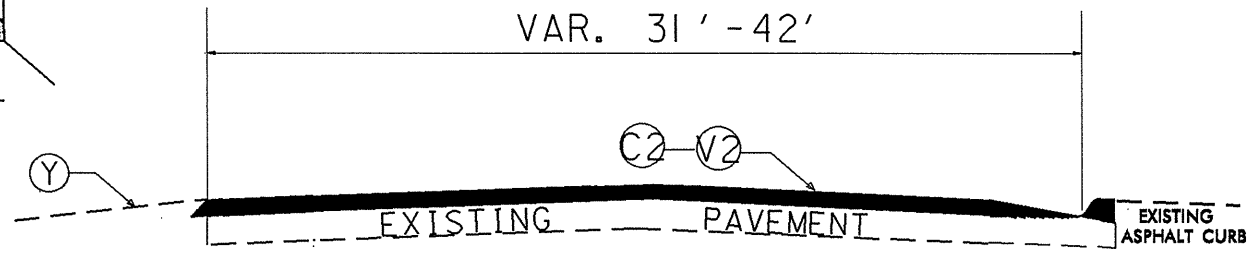
THE PROPOSED WEARING SURFACE SHALL VARY IN THICKNESS AS NECESSARY TO PROVIDE A SMOOTH RIDING SURFACE. A THICKNESS OF NOT LESS THAN 5/8" SHALL BE PROVIDED. THE MAXIMUM THICKNESS SHALL PREFERABLY BE 1-1/2" UNLESS IT IS IMPRACTICAL TO PROVIDE A SMOOTH RIDING SURFACE OTHERWISE.

NOTES

ALL UNPAVED S.R. ROADS TO BE SURFACED 50' FROM EDGE OF PAVEMENT OF MAIN PROJECT.
 ALL PAVED S.R. ROADS TO BE RESURFACED TO THE ENDS OF THE RADII, OR AS DIRECTED BY THE ENGINEER.
 EDGES, PAVEMENT WIDENING, INTERSECTIONS AND BRIDGE FLARES ARE INCLUDED IN THE TABLE OF QUANTITIES.
 SHOULDERS AND DITCHES ARE TO BE CONSTRUCTED BY OTHERS UNLESS OTHERWISE NOTED.
 BRIDGES TO BE RESURFACED AT LOCATIONS AND TO DEPTH AS DIRECTED BY THE ENGINEER.

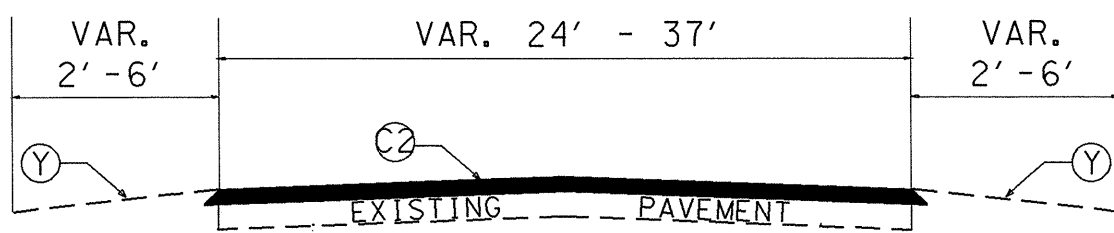


ASPHALT CONCRETE SURFACE COURSE TYPE S9.5B. and S9.5C (LEVELING COURSE)

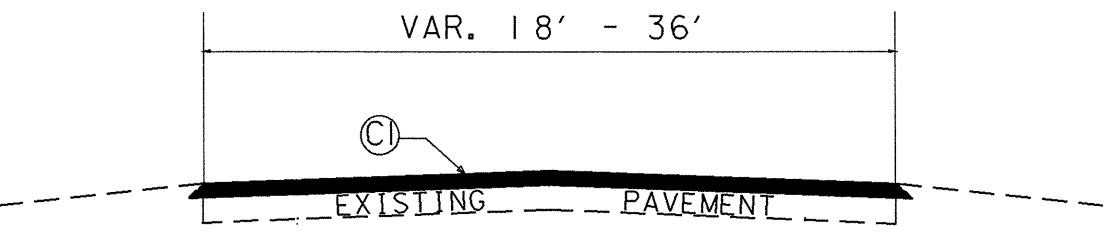


TYPICAL SECTION NO. 3

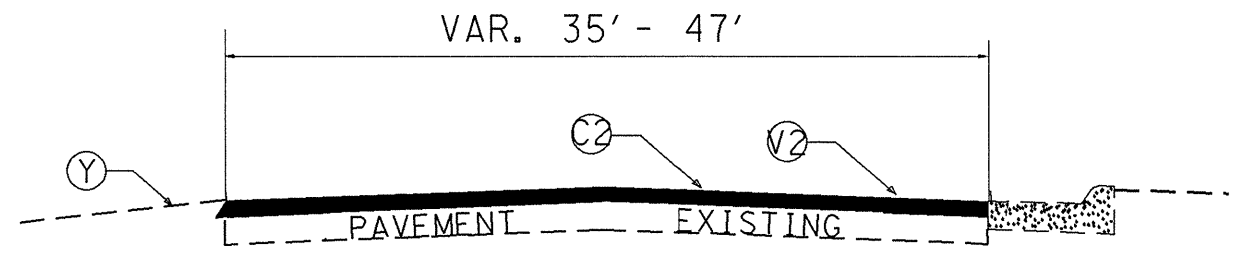
Ⓢ2 MILL 1-1/2" DEPTH ENTIRE LENGTH OF TYPICAL ALONG CURB AS DIRECTED BY ENGINEER



TYPICAL SECTION NO. 1



TYPICAL SECTION NO. 2



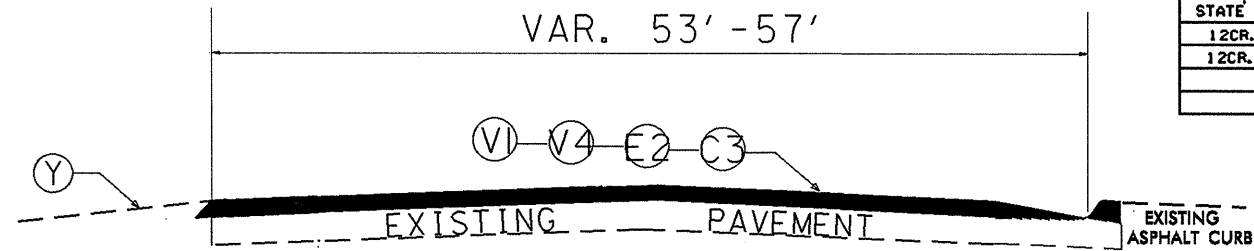
TYPICAL SECTION NO. 4

NOTE: PAVEMENT EDGE SLOPES ARE 1:1 UNLESS SHOWN OTHERWISE.
 MILL BRIDGE APPROACHES 100' TO PROVIDE A SMOOTH TRANSITION AS DIRECTED.
 MILL INTO GUTTER LINE WHERE SHOWN AND AS DIRECTED.

PROJ. REFERENCE NO.	SHEET NO.	TOTAL SHEETS
CLEVELAND COUNTY 2011	10 OF 13	
STATE PROJ. NO.	F. A. PROJ. NO.	DESCRIPTION
12CR.10231.9		
12CR.20231.11		

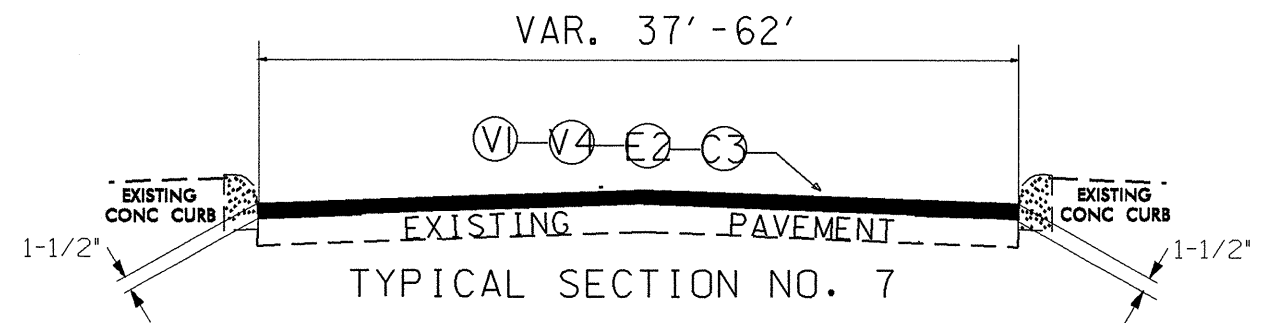
PAVEMENT SCHEDULE	
Y	SHOULDER RECONSTRUCTION
C1	PROP. APPROX. 1½" ASPHALT CONCRETE SURFACE COURSE, TYPE S9.5B, AT AN AVERAGE RATE OF 168 LBS. PER SQ. YD.
C2	PROP. APPROX. 1½" ASPHALT CONCRETE SURFACE COURSE, TYPE S9.5C, AT AN AVERAGE RATE OF 168 LBS. PER SQ. YD.
C3	PROP. APPROX. 2" ASPHALT CONCRETE SURFACE COURSE, TYPE S12.5C, AT AN AVERAGE RATE OF 224 LBS. PER SQ. YD.
E1	PROP. APPROX. 5.5" ASPHALT CONCRETE BASE COURSE, TYPE B25.0B, AT AN AVERAGE RATE OF 627 LBS. PER SQ. YD.
E2	PROP. APPROX. 5" ASPHALT CONCRETE BASE COURSE, TYPE B25.0C, AT AN AVERAGE RATE OF 570 LBS. PER SQ. YD.
V1	MILL ASPHALT PAVEMENT APPROX. 2 "
V2	MILL ASPHALT PAVEMENT APPROX. 1½"
V3	MILL ASPHALT PAVEMENT APPROX. 3" AS DIRECTED BY ENGINEER
V4	MILL ASPHALT PAVEMENT APPROX. 5" AS DIRECTED BY ENGINEER

NOTE: PAVEMENT EDGE SLOPES ARE 1:1 UNLESS SHOWN OTHERWISE.
MILL BRIDGE APPROACHES 100' TO PROVIDE A SMOOTH TRANSITION AS DIRECTED.
MILL INTO GUTTER LINE WHERE SHOWN AND AS DIRECTED.



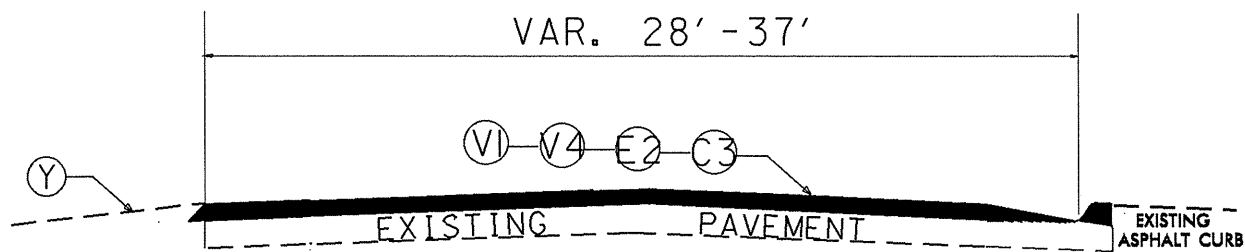
TYPICAL SECTION NO. 6

- Ⓥ1 MILL 2" DEPTH ENTIRE LENGTH OF TYPICAL ALONG CURB AS DIRECTED BY ENGINEER
- Ⓥ4 MILL 5" ADDITIONAL DEPTH AT HWY 150 INTERSECTION WHERE RUTTED AS DIRECTED BY THE ENGINEER APPROXIMATELY 200+ FEET EACH DIRECTION



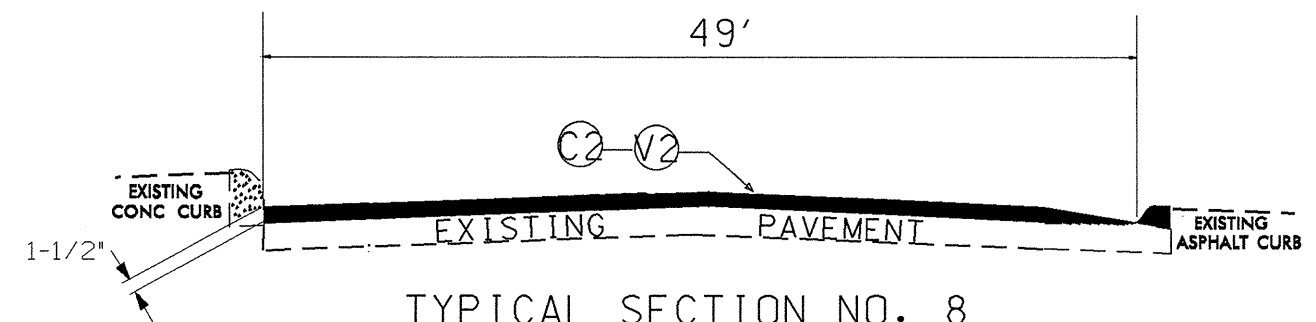
TYPICAL SECTION NO. 7

- Ⓥ1 MILL 2" DEPTH ENTIRE LENGTH OF TYPICAL ALONG CURB AS DIRECTED BY ENGINEER
- Ⓥ4 MILL 5" ADDITIONAL DEPTH AT PEACH ST & HWY 150 WHERE RUTTED AS DIRECTED BY THE ENGINEER APPROXIMATELY 200+ FEET EACH DIRECTION



TYPICAL SECTION NO. 5

- Ⓥ1 MILL 2" DEPTH ENTIRE LENGTH OF TYPICAL ALONG CURB AS DIRECTED BY ENGINEER
- Ⓥ4 MILL 5" ADDITIONAL DEPTH AT COUNTRY CLUB INTERSECTION WHERE RUTTED AS DIRECTED BY THE ENGINEER APPROXIMATELY 200+ FEET EACH DIRECTION



TYPICAL SECTION NO. 8

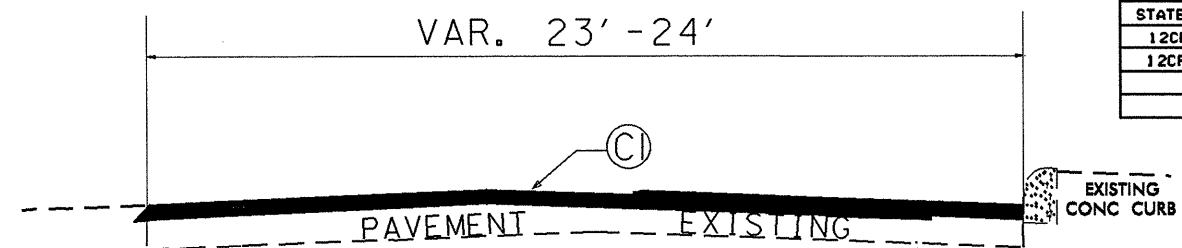
PROJ. REFERENCE NO.	SHEET NO.	TOTAL SHEETS
CLEVELAND COUNTY 2011	11 OF 13	
STATE PROJ. NO.	F. A. PROJ. NO.	DESCRIPTION
12CR.10231.9		
12CR.20231.11		

PAVEMENT SCHEDULE	
Y	SHOULDER RECONSTRUCTION
C1	PROP. APPROX. 1½" ASPHALT CONCRETE SURFACE COURSE, TYPE S9.5B, AT AN AVERAGE RATE OF 168 LBS. PER SQ. YD.
C2	PROP. APPROX. 1½" ASPHALT CONCRETE SURFACE COURSE, TYPE S9.5C, AT AN AVERAGE RATE OF 168 LBS. PER SQ. YD.
C3	PROP. APPROX. 2" ASPHALT CONCRETE SURFACE COURSE, TYPE S12.5C, AT AN AVERAGE RATE OF 224 LBS. PER SQ. YD.
E1	PROP. APPROX. 5.5" ASPHALT CONCRETE BASE COURSE, TYPE B25.0B, AT AN AVERAGE RATE OF 627 LBS. PER SQ. YD.
E2	PROP. APPROX. 5" ASPHALT CONCRETE BASE COURSE, TYPE B25.0C, AT AN AVERAGE RATE OF 570 LBS. PER SQ. YD.
V1	MILL ASPHALT PAVEMENT APPROX. 2 "
V2	MILL ASPHALT PAVEMENT APPROX. 1½"
V3	MILL ASPHALT PAVEMENT APPROX. 3" AS DIRECTED BY ENGINEER
V4	MILL ASPHALT PAVEMENT APPROX. 5" AS DIRECTED BY ENGINEER

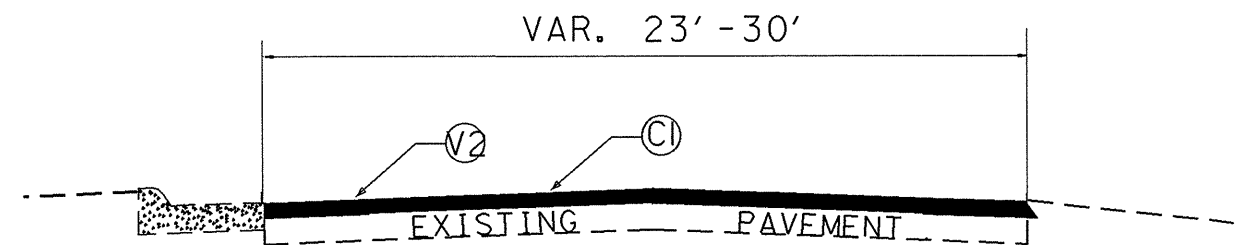
NOTE: PAVEMENT EDGE SLOPES ARE 1:1 UNLESS SHOWN OTHERWISE.

MILL BRIDGE APPROACHES 100' TO PROVIDE A SMOOTH TRANSITION AS DIRECTED.

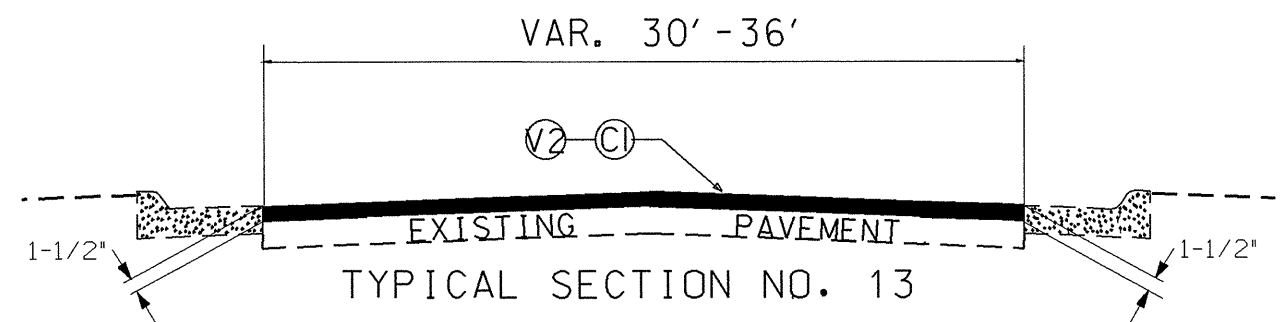
MILL INTO GUTTER LINE WHERE SHOWN AND AS DIRECTED.



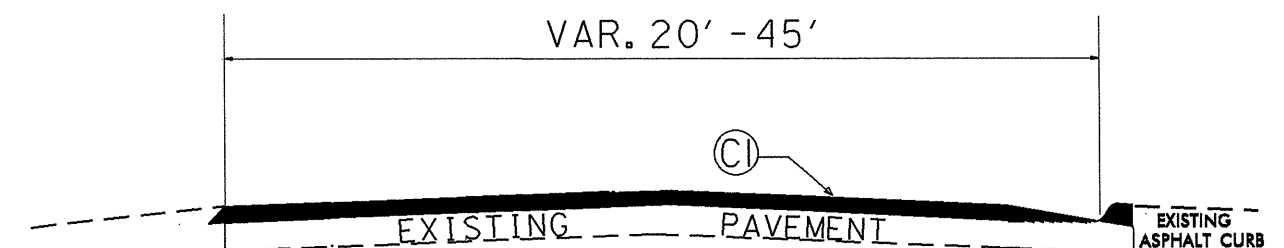
TYPICAL SECTION NO. 11



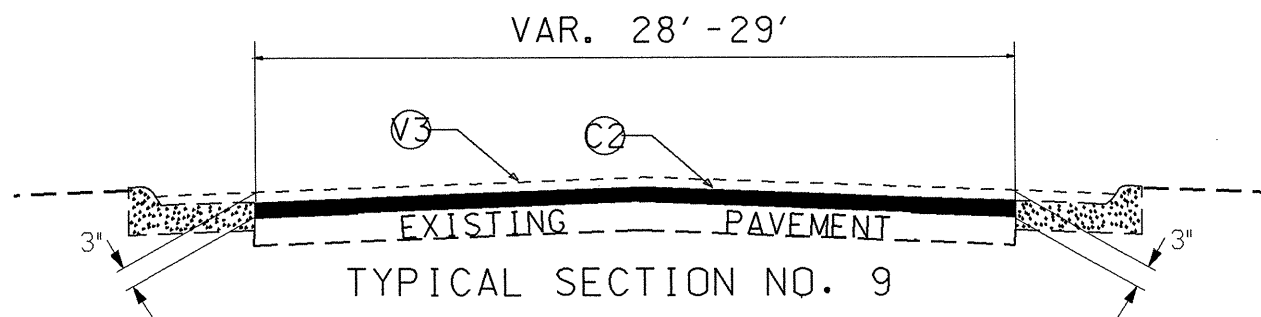
TYPICAL SECTION NO. 12



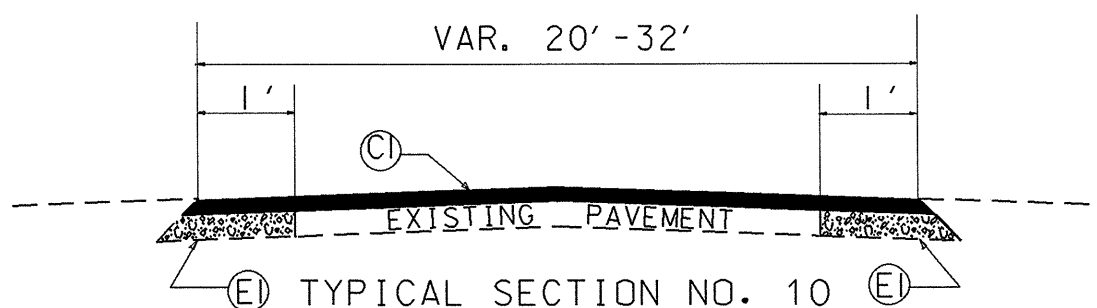
TYPICAL SECTION NO. 13



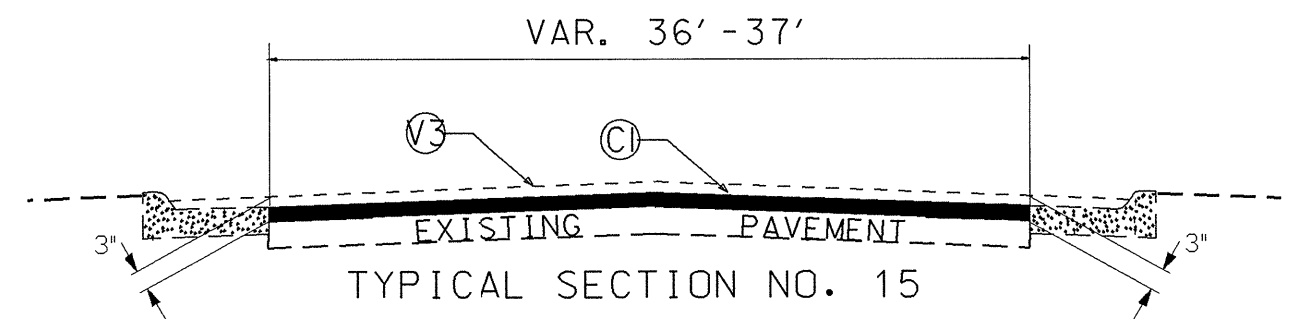
TYPICAL SECTION NO. 14



TYPICAL SECTION NO. 9



TYPICAL SECTION NO. 10



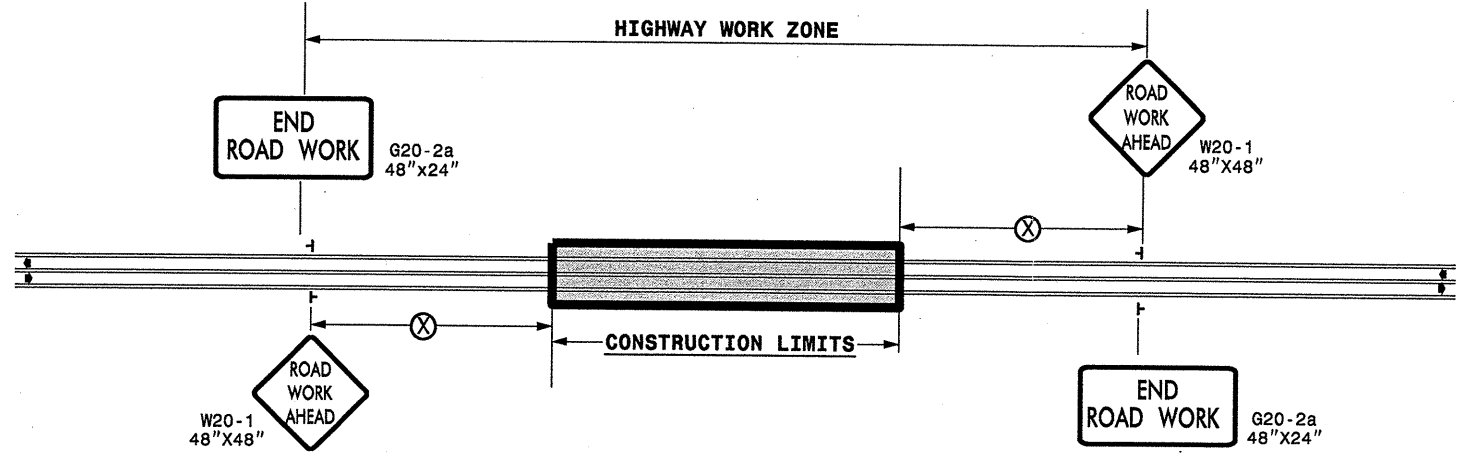
TYPICAL SECTION NO. 15

PROJECT NO.	SHEET NO.	TOTAL NO.
12CR.10231.9, 12CR.20231.11	13 of 13	

THERMOPLASTIC AND PAINT QUANTITIES

PROJECT NO	COUNTY	MAP NO	ROUTE	DESCRIPTION	4685000000-E	4686000000-E			4695000000-E		4700000000-E	4710000000-E	4721000000-E	4725000000-E				4810000000-E		4950000000-E
					4" X 90 M WHITE THERMO LF	4" X 120 M YELLOW THERMO LF	4" X 120 M WHITE THERMO LF	8" X 90 M YELLOW THERMO LF	8" X 90 M WHITE THERMO LF	12" X 90 M WHITE THERMO LF	24" X 120 M WHITE THERMO LF	THERMO MSG SCHOOL 120 M EA	THERMO LT ARROW 90 M EA	THERMO RT ARROW 90 M EA	THERMO STR ARROW 90 M EA	THERMO STR & RT ARROW 90 M EA	4" WHITE PAINT LF	4" YELLOW PAINT LF	SNOW PLOWABLE MARKERS EA	
12CR.10231.9	Cleveland	1	US 74 BUS (MARION ST)	563' W OF NC 180 TO DOVER ST	20,332	23,925	1,100	70		160	390		21	9	4				375	
TOTAL FOR MAP NO. 1					20,332	23,925	1,100	70		160	390		21	9	4				375	
		2	NC 150 (CHERRYVILLE RD)	US 74 BUS TO ~200' NE OF INTERSECTION	220	400	90	180			35		3	3					25	
TOTAL FOR MAP NO. 2					220	400	90	180			35		3	3					25	
TOTAL FOR PROJ NO. 12CR.10231.9					20,552	24,325	1,190	250		160	425		24	12	4				400	
						25,515		250							40					
12CR.20231.11	Cleveland	3	SR 1105 (MELROSE RD)	NC 150 TO NC 18						140	12							8,000	8,000	
TOTAL FOR MAP NO. 3										140	12							8,000	8,000	
		4	SR 2235 (BETHLEHEM CH RD)	NC 226 TO SR 2238														35,078	35,078	
TOTAL FOR MAP NO. 4																		35,078	35,078	
		5	SR 2159 (ZEB CLINE RD)	SR 1001 TO DE														16,140	16,140	
TOTAL FOR MAP NO. 5																		16,140	16,140	
		6	SR 1363 (KEN MCINTIRE RD)	NC 182 TO NC 226														30,128	30,128	
TOTAL FOR MAP NO. 6																		30,128	30,128	
		7	SR 1194 (ROCKFORD RD)	SR 1184 (MCKINNEY RD) TO 175' W OF BRIDGE														18,077	18,077	
TOTAL FOR MAP NO. 7																		18,077	18,077	
		8	SR 1194 (ROCKFORD RD)	SR 1195 (COLLEGE FARM RD) TO 136' E OF BRIDGE														28,837	17,688	
TOTAL FOR MAP NO. 8																		28,837	17,688	
		9	SR 2033 (OAK GROVE RD)	SR 2163 (WOOD BARK LN) TO SR 2015 (ROLLINGBROOK RD)														41,318	41,318	
TOTAL FOR MAP NO. 9																		41,318	41,318	
		10	SR 1172 (SANDY RUN CH. RD.)	SR 1180 (BRIDGES LAKE RD) TO SR 1164 (WHITAKER RD)														32,926	20,196	
TOTAL FOR MAP NO. 10																		32,926	20,196	
		11	SR 2022 (CENTER ST)	NC 216 TO SR 2021 (SECOND ST)														7,317	4,488	
TOTAL FOR MAP NO. 11																		7,317	4,488	
		12	SR 2381 (SERVICE RD)	SR 2250 TO US 74 BUS														4,304	4,304	
TOTAL FOR MAP NO. 12																		4,304	4,304	
		13	SR 2278 (ELM ST)	US 29 TO SOUTH CAROLINA LINE														22,812	22,812	
TOTAL FOR MAP NO. 13																		22,812	22,812	
		14	SR 2318 (SERVICE RD)	US 74 TO DE														9,469	9,469	
TOTAL FOR MAP NO. 14																		9,469	9,469	
		15	SR 2093 (SERVICE RD)	US 74 TO SR 2049 (COUNTY HOME RD)														4,488	7,317	
TOTAL FOR MAP NO. 15																		4,488	7,317	
		16	SR 2049 (COUNTY HOME RD)	US 74 TO SR 2050 (KINGS RD)														3,228	3,228	
TOTAL FOR MAP NO. 16																		3,228	3,228	
		17	SR 1149 (PATRICK AVE)	NC 150 TO SR 1148			200		100		120	12	19		1	4		35,508	36,000	
TOTAL FOR MAP NO. 17							200		100		120	12	19		1	4		35,508	36,000	
		18	SR 1161 (PLEASANT RIDGE CH RD)	SR 1162 TO US 74														25,767	25,767	
TOTAL FOR MAP NO. 18																		25,767	25,767	
		19	SR 2050 (KINGS RD)	BRIDGE TO GRAHAM ST														8,580	13,988	
TOTAL FOR MAP NO. 19																		8,580	13,988	
		20	SR 2033 (SCISM RD)	SR 2026 TO NC 216														23,224	23,224	
TOTAL FOR MAP NO. 20																		23,224	23,224	
		21	SR 1112 (SEATTLE ST)	NC 150 TO SR 1105 (MELROSE DR)						35			1					8,912	8,912	
TOTAL FOR MAP NO. 21										35			1					8,912	8,912	
		22	SR 1001 (STONE POINT RD)	260' S OF SR 2159 (ZEB CLINE RD) TO 360' N OF SR 2044 (NEW CAMP CREEK RD)														19,583	19,583	
TOTAL FOR MAP NO. 22																		19,583	19,583	
		23	SR 1123 (OLD BOILING SPRINGS RD)	US 74 TO 250' N OF SR 1151 (POPLAR SPRGS CH RD)									6					30,332	30,332	
TOTAL FOR MAP NO. 23													6					30,332	30,332	
		24	SR 2164 (MILLSAP RD)	SR 2052 TO DE																
TOTAL FOR MAP NO. 24																				
		25	SR 2165 (MURDOCK CIR)	SR 2164 TO SR 2164																
TOTAL FOR MAP NO. 25																				
		26	SR 2235 (BETHLEHEM CH RD)	SR 2238 TO SR 2245														51,648	51,648	
TOTAL FOR MAP NO. 26																		51,648	51,648	
		27	SR 1227 (RIVER HILL DR)	SR 1140 TO SR 1140 AT CHG PVMT														22,381	22,381	
TOTAL FOR MAP NO. 27																		22,381	22,381	
TOTAL FOR PROJ NO. 12CR.20231.11							200	100	100		295	24	26		32	1	5		488,057	470,078
GRAND TOTAL					20,552	24,325	1,390	250	100	160	720	24	60	12	5	5		488,057	470,078	600
						25,715		350						72			958,135			

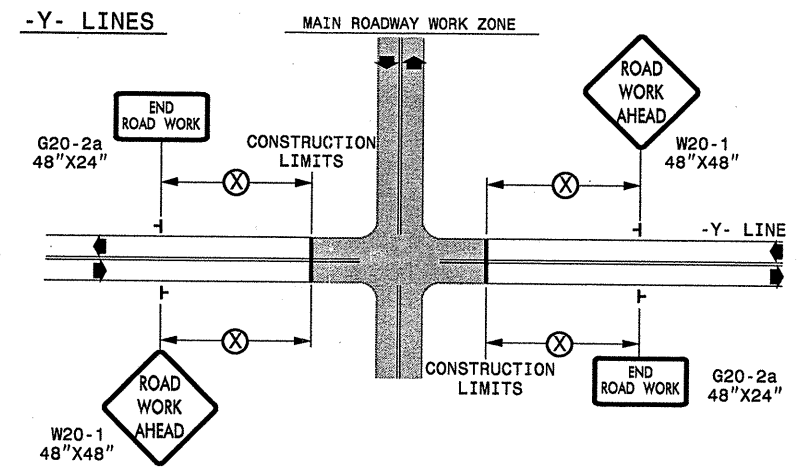
TWO-WAY UNDIVIDED ** (L-LINES)



POSTED SPEED LIMIT (M.P.H.)	RECOMMENDED MINIMUM SIGN SPACING
≤ 50	500'
≥ 55	1000'

STATE OF NORTH CAROLINA
DEPT. OF TRANSPORTATION
DIVISION OF HIGHWAYS
RALEIGH, N.C.

ROADWAYS INTERSECTING ALONG 2 WAY UNDIVIDED WORK ZONE (Y-LINES)



GENERAL NOTES

- USE FLUORESCENT ORANGE SHEETING (TYPE VII OR HIGHER) ON ALL ADVANCED WORK ZONE SIGNS.
- DO NOT INSTALL ADVANCE WARNING SIGNS MORE THAN 3 DAYS PRIOR TO BEGINNING OF WORK.
- SIGNS SHOWN ARE REQUIRED FOR WORK ZONES THAT WILL REMAIN IN EFFECT OVERNIGHT. FOR SHORT-TERM DAILY MAINTENANCE TYPE OPERATIONS, THIS SIGNING APPLICATION IS OPTIONAL; MAY USE ONLY APPLICABLE ROADWAY STANDARD DRAWINGS INSTEAD. HOWEVER, IF THIS SIGNING APPLICATION IS USED, SIGNS MAY BE PORTABLE MOUNTED.
- ALL SIGN SPACING DIMENSIONS ARE APPROXIMATE, FIELD ADJUST AS NECESSARY OR AS DIRECTED.
- USE 3LB STEEL U-CHANNEL POST OR 4" X 4" WOOD POST FOR ALL WORK ZONE SIGNS. 3LB STEEL U-CHANNEL POSTS MUST MEET THE REQUIREMENTS OF STANDARD SPECIFICATION SECTION 1094-1(B), MAY BE GALVANIZED STEEL, OR MAY BE PAINTED GREEN BY THE POST MANUFACTURER. SQUARE STEEL TUBING POSTS HAVING EQUIVALENT STRENGTH OF THE 3 LB STEEL U-CHANNEL POST ARE ALSO ACCEPTABLE FOR USE. ERECT SIGNS PER ROADWAY STANDARD DRAWING 1110.01. PAYMENT FOR WOOD POSTS, 3LB STEEL U-CHANNEL AND SQUARE STEEL TUBING POSTS WITH SIGNS WILL BE MADE ACCORDING TO STANDARD SPECIFICATION "WORK ZONE SIGNS" SECTION 1110.
- WHEN NECESSARY, USE SPLICING IN ACCORDANCE WITH ROADWAY STANDARD DRAWING NO. 1110.01. REMOVE ENTIRE POST WHEN REMOVING SIGNS WITH SPLICED POSTS.
- DO NOT BACK BRACE SIGN SUPPORTS.
- ** TWO-WAY UNDIVIDED ADVANCE WARNING SIGN CONFIGURATION MAY BE USED ON URBAN MULTI-LANE FACILITIES WHERE CONDITIONS LIMIT THE USE OF DUAL MOUNTED SIGNS AS DETERMINED BY THE ENGINEER.

LEGEND

┆ STATIONARY SIGN

◀ DIRECTION OF TRAFFIC FLOW

DETAIL DRAWING FOR
TWO-WAY UNDIVIDED
WORK ZONE WARNING SIGNS

SHEET 1 OF 1

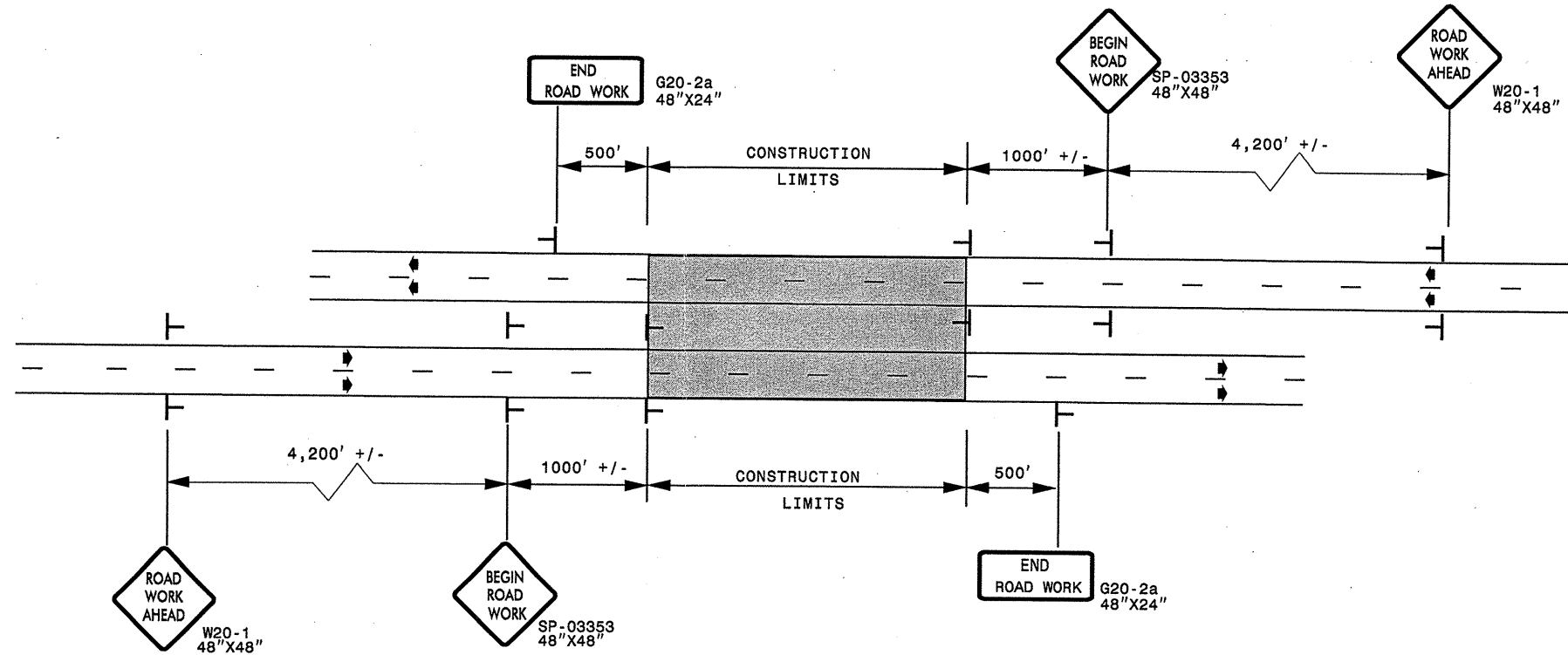
APPROVED: _____	DATE: _____
SEAL	SCALE: NONE
	DATE:
	DESIGN BY:
	REVIEWED BY:
DETAIL DRAWING FOR TWO-WAY UNDIVIDED AND URBAN FREEWAYS ADVANCED WORK ZONE WARNING SIGNS	
REVISIONS	
7-98	10/01
10-98	03/04
01/01	11/04

08-OCT-2010 14:00 Division\Share\Resurfacing\2010\Western\2010_Div2\C202637A-B_12CR.10231.9x2-Cleveland.US74B255Rem27\C202637A-B_12CR.10231.9x2-2way_Undiv.&Urban-Frways_stationary.dwg
 D:\DOT\SR\GROUPS-WZTCCC\M&S Division\Share\Resurfacing\2010\Western\2010_Div2\C202637A-B_12CR.10231.9x2-Cleveland.US74B255Rem27\C202637A-B_12CR.10231.9x2-2way_Undiv.&Urban-Frways_stationary.dwg
 SNOOCEEN AT WZTCCC44733

ADVANCED WORK ZONE WARNING SIGNING FOR FREEWAYS (4 LANES OR GREATER)

PROJ. REFERENCE NO.	SHEET NO.
12CR.10231.9 & 12CR.20231.11	TCP-2

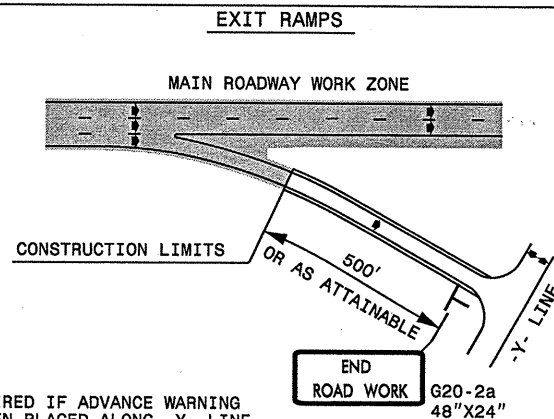
DETAIL A



LEGEND	
	STATIONARY SIGN
▶	DIRECTION OF TRAFFIC FLOW

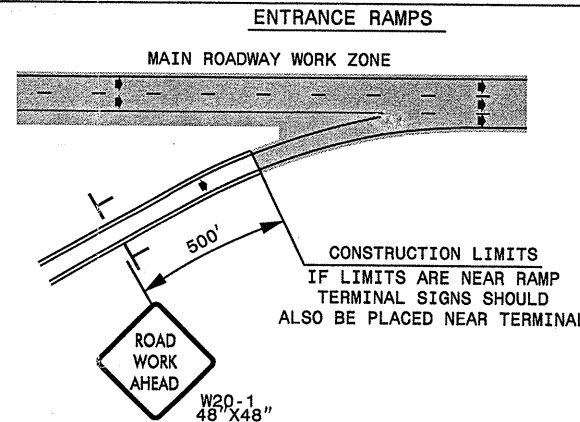
* USE THE "\$250 SPEEDING PENALTY" SIGN, SPEED LIMIT SIGN, AND ORANGE PANEL; ONLY WHEN A "\$250 SPEEDING PENALTY" ORDINANCE HAS BEEN ISSUED BY THE REGIONAL TRAFFIC ENGINEER.

DETAIL B



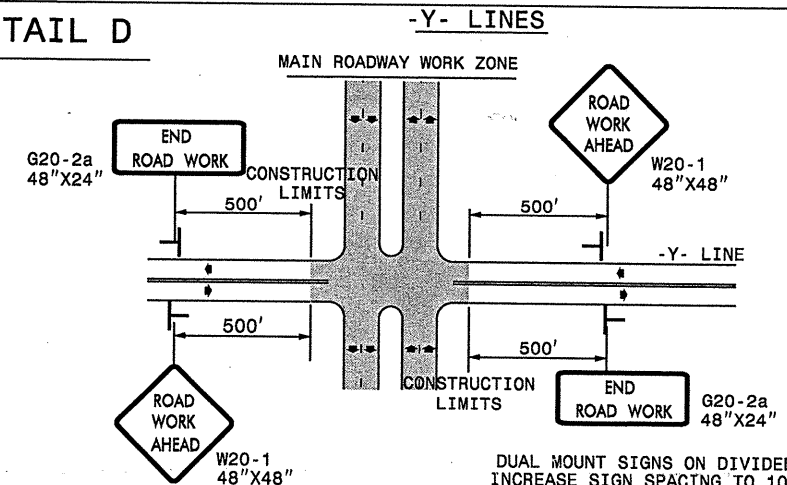
NOTE: SIGN NOT REQUIRED IF ADVANCE WARNING SIGNS HAVE BEEN PLACED ALONG -Y- LINE THAT RAMP INTERSECTS. IF CONSTRUCTION LIMITS ARE AT END OF RAMP, PLACE SIGN AT END OF RAMP.

DETAIL C



CONSTRUCTION LIMITS IF LIMITS ARE NEAR RAMP TERMINAL SIGNS SHOULD ALSO BE PLACED NEAR TERMINAL

DETAIL D



DUAL MOUNT SIGNS ON DIVIDED HIGHWAYS AND INCREASE SIGN SPACING TO 1000'+/-.

GENERAL NOTES

- USE FLUORESCENT ORANGE SHEETING (TYPE VII OR HIGHER) ON ALL ADVANCED WORK ZONE SIGNS.
- DO NOT INSTALL ADVANCE WARNING SIGNS MORE THAN 3 DAYS PRIOR TO BEGINNING OF WORK.
- SIGNS SHOWN ARE REQUIRED FOR WORK ZONES THAT WILL REMAIN IN EFFECT OVERNIGHT. FOR SHORT-TERM DAILY MAINTENANCE TYPE OPERATIONS, THIS SIGNING APPLICATION IS OPTIONAL; MAY USE ONLY APPLICABLE ROADWAY STANDARD DRAWINGS INSTEAD. HOWEVER, IF THIS SIGNING APPLICATION IS USED, SIGNS MAY BE PORTABLE MOUNTED.
- ALL SIGN SPACING DIMENSIONS ARE APPROXIMATE, FIELD ADJUST AS NECESSARY OR AS DIRECTED.
- USE 3LB STEEL U-CHANNEL POST OR 4" X 4" WOOD POST FOR ALL WORK ZONE SIGNS. 3LB STEEL U-CHANNEL POSTS MUST MEET THE REQUIREMENTS OF STANDARD SPECIFICATION SECTION 1094-1(B), MAY BE GALVANIZED STEEL, OR MAY BE PAINTED GREEN BY THE POST MANUFACTURER. SQUARE STEEL TUBING POSTS HAVING EQUIVALENT STRENGTH OF THE 3 LB STEEL U-CHANNEL POST ARE ALSO ACCEPTABLE FOR USE. ERECT SIGNS PER ROADWAY STANDARD DRAWING 1110.01. PAYMENT FOR WOOD POSTS, 3LB STEEL U-CHANNEL AND SQUARE STEEL TUBING POSTS WITH SIGNS WILL BE MADE ACCORDING TO STANDARD SPECIFICATION "WORK ZONE SIGNS" SECTION 1110.
- WHEN NECESSARY, USE SPLICING IN ACCORDANCE WITH ROADWAY STANDARD DRAWING NO. 1110.01. REMOVE ENTIRE POST WHEN REMOVING SIGNS WITH SPLICED POSTS.
- DO NOT BACK BRACE SIGN SUPPORTS.

APPROVED: _____ DATE: _____	ADVANCED WORK ZONE WARNING SIGNS FOR FREEWAYS (4 LANES OR GREATER)											
<div style="border: 1px solid black; border-radius: 50%; width: 60px; height: 60px; margin: 0 auto; display: flex; align-items: center; justify-content: center;"> SEAL </div>	SCALE: NONE	<table border="1" style="width: 100%; border-collapse: collapse;"> <tr> <th colspan="2" style="font-size: 8px;">REVISIONS</th> </tr> <tr> <td style="width: 15px; font-size: 8px;">DATE:</td> <td style="font-size: 8px;">03/04</td> </tr> <tr> <td style="font-size: 8px;">DWG. BY:</td> <td style="font-size: 8px;">JI</td> </tr> <tr> <td style="font-size: 8px;">DESIGN BY:</td> <td style="font-size: 8px;">JI</td> </tr> <tr> <td style="font-size: 8px;">REVIEWED BY:</td> <td style="font-size: 8px;"> </td> </tr> </table>	REVISIONS		DATE:	03/04	DWG. BY:	JI	DESIGN BY:	JI	REVIEWED BY:	
	REVISIONS											
	DATE:		03/04									
	DWG. BY:		JI									
DESIGN BY:	JI											
REVIEWED BY:												
DATE: 8/03												
DWG. BY: JI												
DESIGN BY: JI												



08-OCT-2010 14:02 C:\GROUPS-WZTCCC\M&S Division\Share\Share\Resurfacing\2010Western\2010.DIV2\C202637A-B.12CR.10231.9x2.Cleveland.LUS74B255Rem27\C202637A-B.12CR.10231.9x2.Freeways-4lanes-or-greater_stationar sign.dwg AT WZTCCC44733