

09/08/99

| | |
|------------|-----------|
| T.I.P. NO. | SHEET NO. |
| B-4034 | UO-1 |

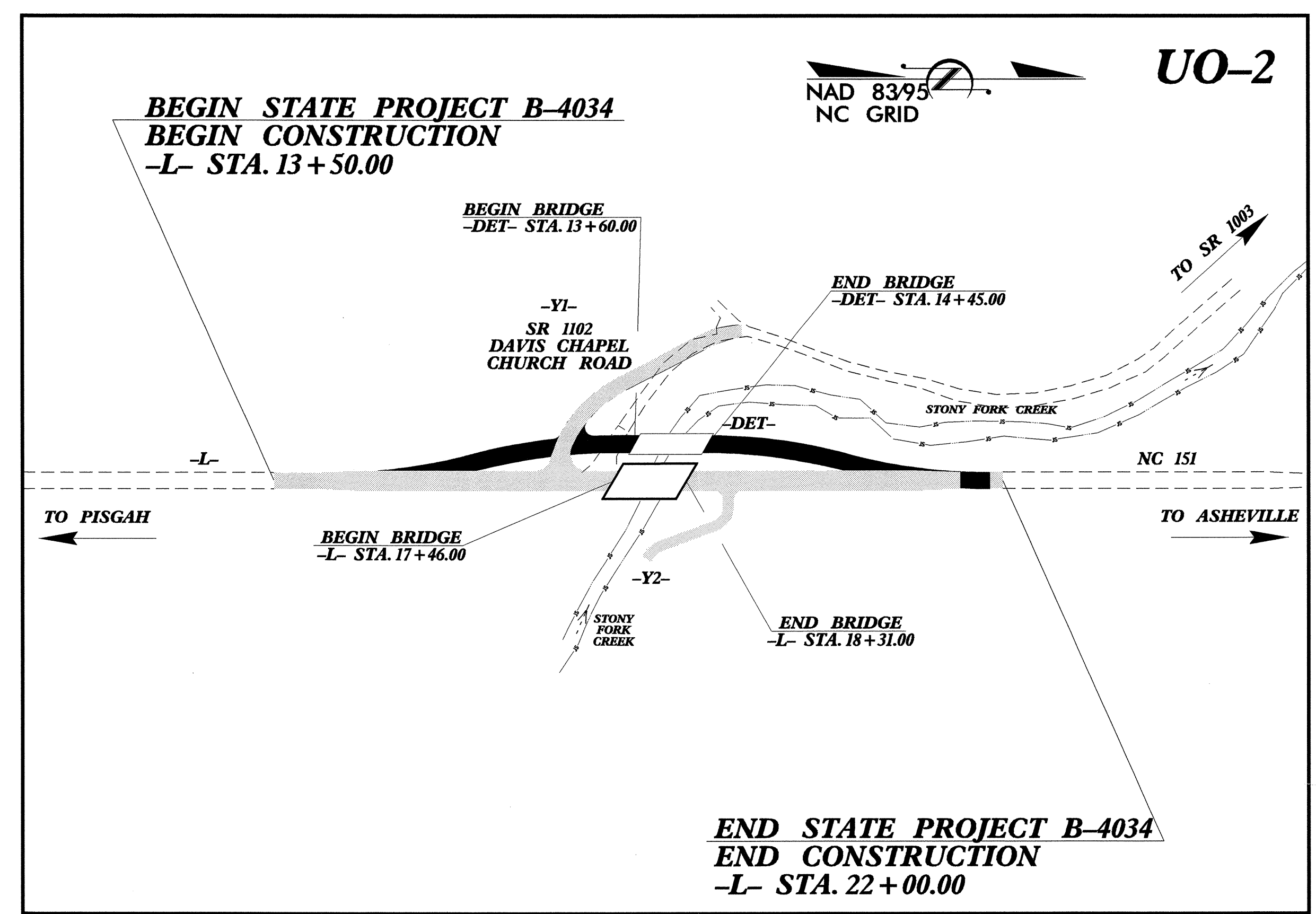
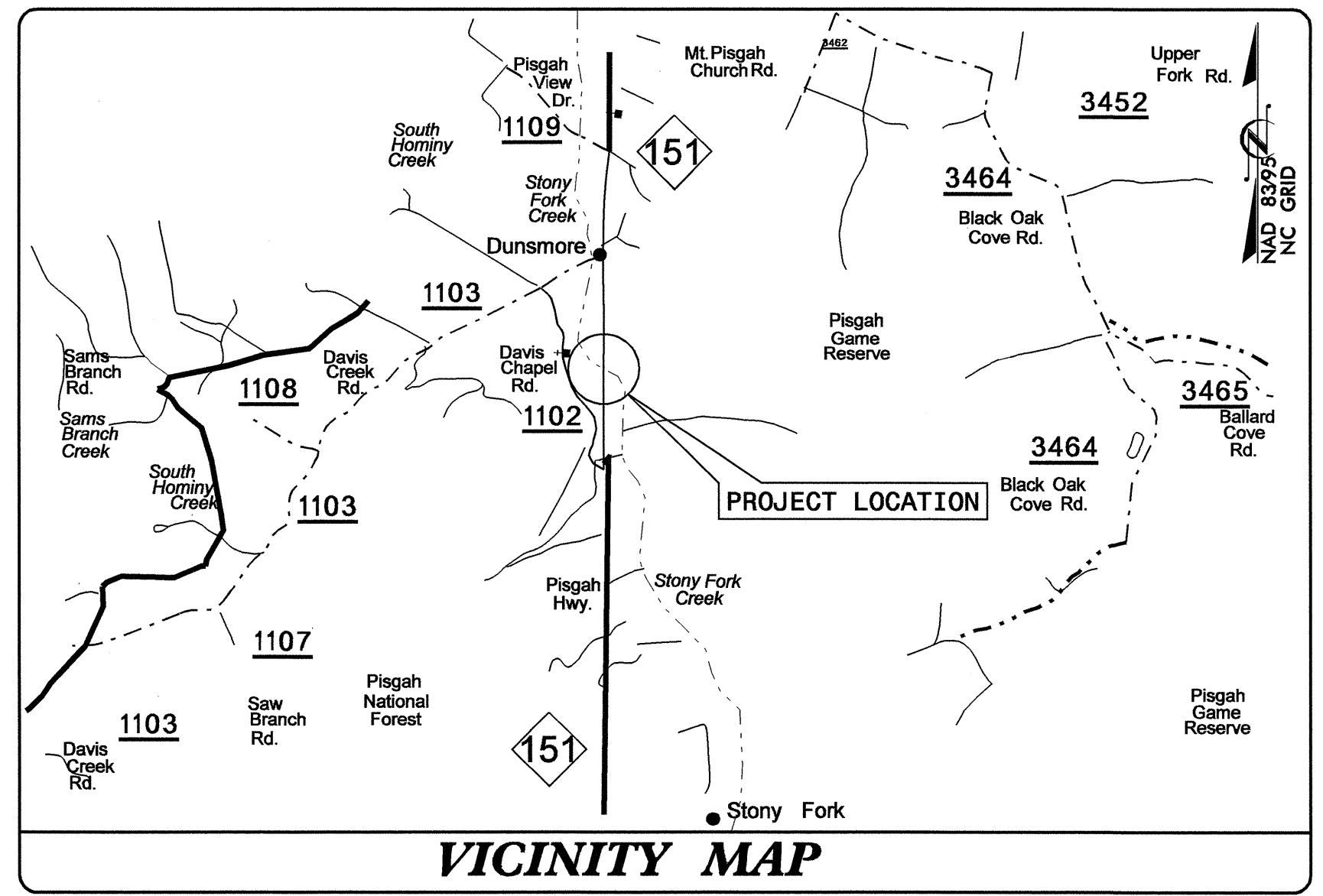
STATE OF NORTH CAROLINA
DIVISION OF HIGHWAYS

**UTILITIES BY OTHERS PLANS
BUNCOMBE COUNTY**

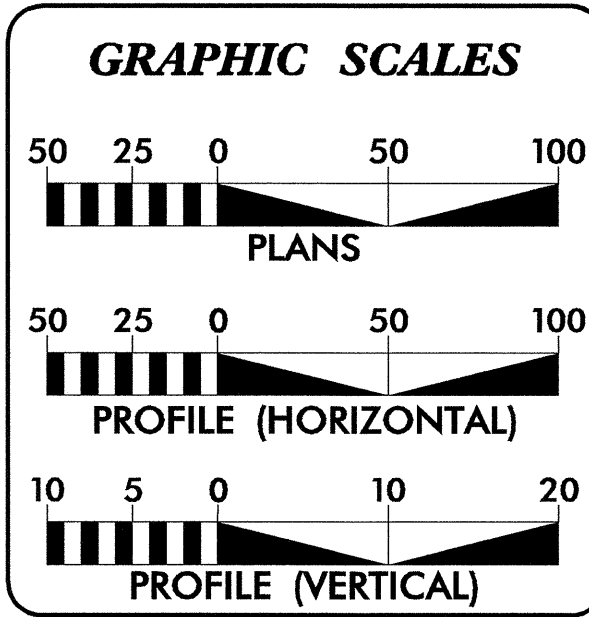
LOCATION: BRIDGE NO. 134 OVER STONY FORK CREEK ON NC 151

TYPE OF WORK: UTILITIES BY OTHERS

TIP PROJECT: B-4034



NOTE: A DESIGN EXCEPTION IS REQUIRED FOR THE PROPOSED BRIDGE WIDTH AND CREST VERTICAL CURVE K VALUE FOR -L-.



INDEX OF SHEETS

| SHEET NO. | DESCRIPTION |
|-----------|--------------------------------|
| UO-1 | TITLE SHEET |
| UO-2 | UTILITIES BY OTHERS PLAN SHEET |

UTILITY OWNERS ON PROJECT

- (1) TELEPHONE - BELLSOUTH / AT&T
- (2) POWER DISTRIBUTION - HAYWOOD EMC
- (3) CABLEVISION - CHARTER COMMUNICATIONS

PREPARED IN THE OFFICE OF:
**DIVISION OF HIGHWAYS
UTILITIES ENGINEERING
SECTION**

1591 MAIL SERVICES CENTER
RALEIGH NC 27699-1591
PHONE (919) 250-4128
FAX (919) 250-4119

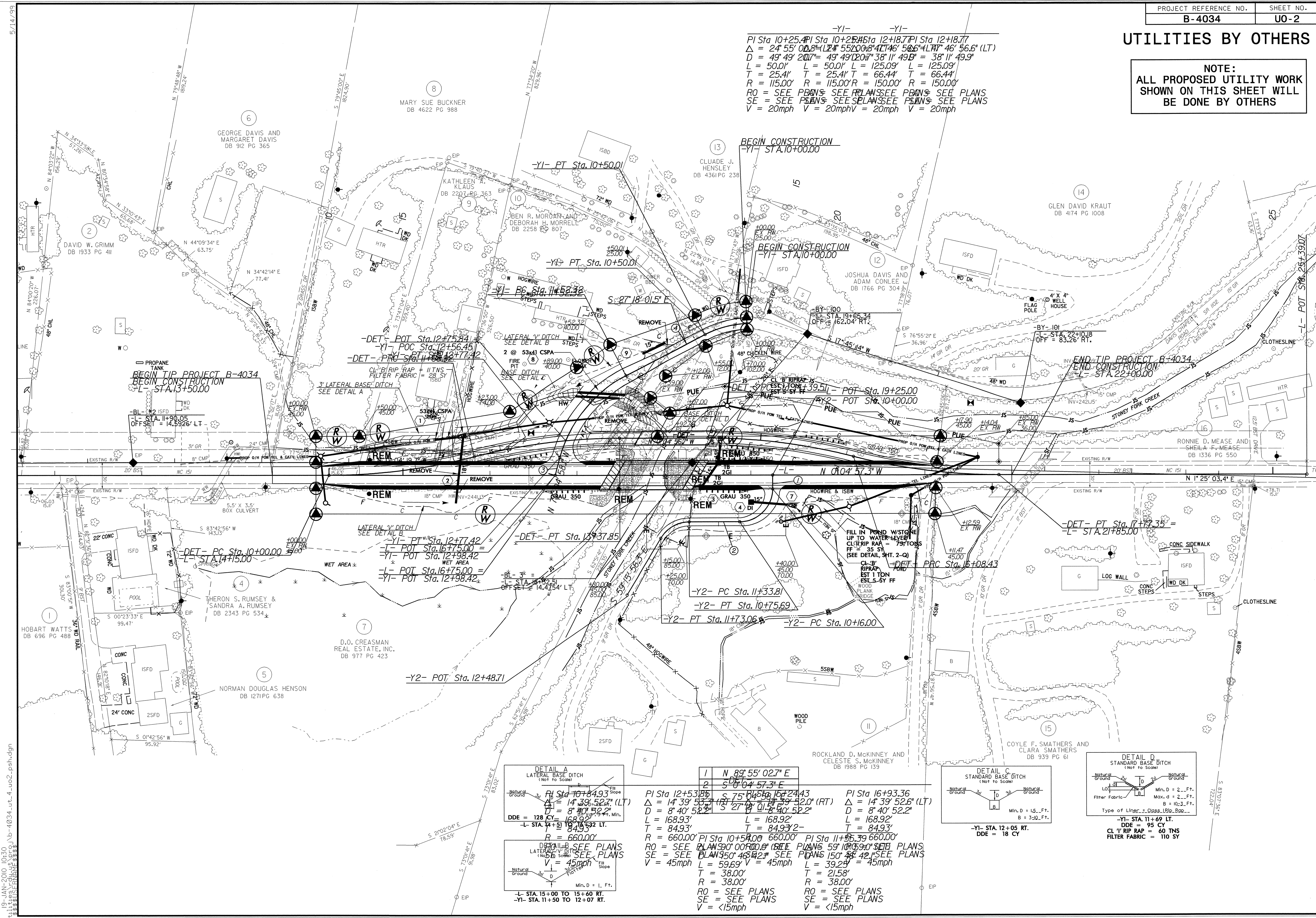
Roger Worthington, P.E. UTILITIES SECTION ENGINEER
Carl A. Barclay, P.E. UTILITIES SQUAD LEADER PROJECT ENGINEER
James E. Swinson UTILITIES PROJECT DESIGNER

11-JAN-2010 13:41
c:\p1\title\proj\div\ut\proj\b-4034_ut_title_uo1.psh.dgn
\$\$\$\$USERNAME\$\$\$\$

UTILITIES BY OTHERS

NOTE:
ALL PROPOSED UTILITY WORK SHOWN ON THIS SHEET WILL BE DONE BY OTHERS

-Y1- -Y1-
 PI Sta 10+25.41 PI Sta 10+25.41 PI Sta 12+18.71 PI Sta 12+18.71
 $\Delta = 24' 55" 00.8'$ (LT) $\Delta = 14' 39" 52.7'$ (LT) $\Delta = 14' 39" 52.6'$ (LT) $\Delta = 14' 39" 52.6'$ (LT)
 $D = 49' 49" 20.7'$ $D = 49' 49" 20.7'$ $D = 49' 49" 20.7'$ $D = 49' 49" 20.7'$
 $L = 50.0'$ $L = 50.0'$ $L = 125.09'$ $L = 125.09'$
 $T = 25.41'$ $T = 25.41'$ $T = 66.44'$ $T = 66.44'$
 $R = 115.00'$ $R = 115.00'$ $R = 150.00'$ $R = 150.00'$
 RO = SEE PLANS SEE PLANS SEE PLANS SEE PLANS
 SE = SEE PLANS SEE PLANS SEE PLANS SEE PLANS
 V = 20mph V = 20mph V = 20mph V = 20mph



BEGIN TIP PROJECT B-4034
 BEGIN CONSTRUCTION
 -L- STA. 13+50.00

BEGIN CONSTRUCTION
 -Y1- STA. 10+00.00

BEGIN CONSTRUCTION
 -Y1- STA. 10+00.00

END TIP PROJECT B-4034
 END CONSTRUCTION
 -L- STA. 22+00.00

5/14/99
 19-JAN-2010 10:30
 r:\utilities\du\du\proj\B-4034\ut_4_uo2.psh.dgn
 *****PRINTER*****

