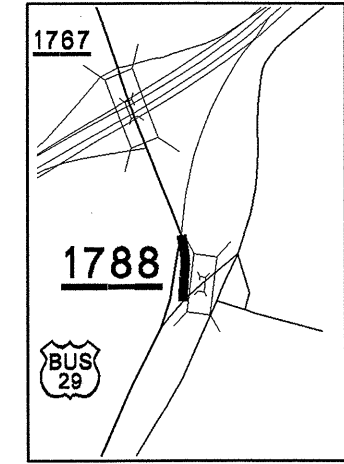
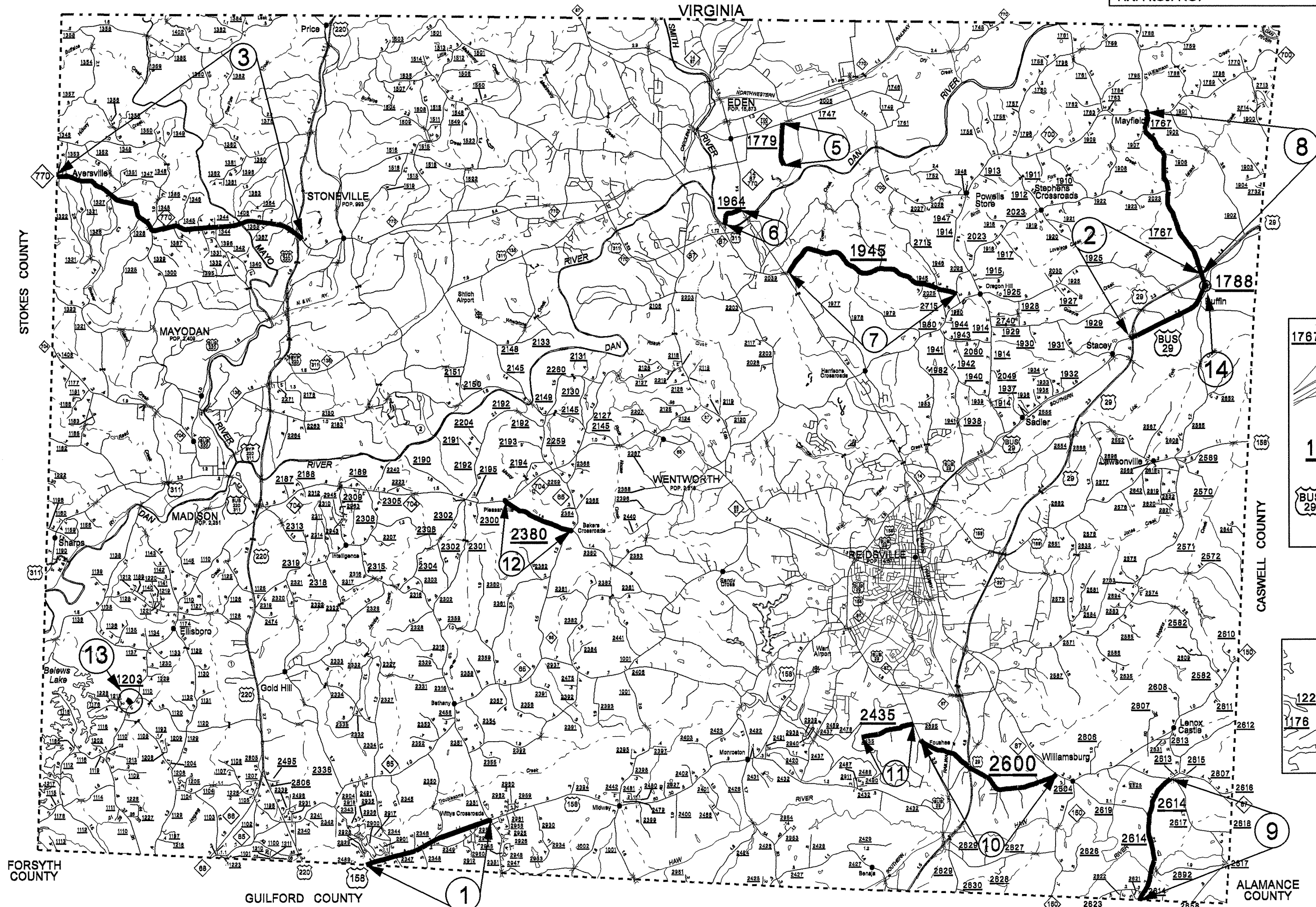


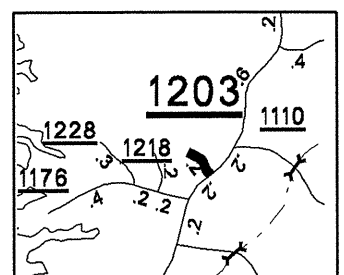
ROCKINGHAM COUNTY

STATE	PROJECT NO.	SHEET NO.	TOTAL SHEETS
N.C.	7CR.10791.32, ETC.	1	6
F.A. PROJ. NO.			

7CR.10791.32
7CR.20791.32
7.107912



MAP 14

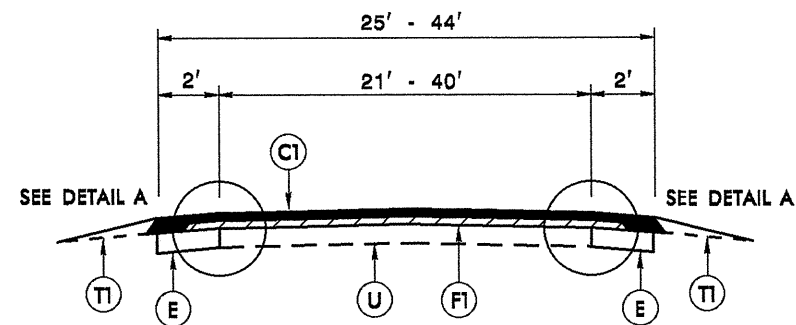


MAP 13

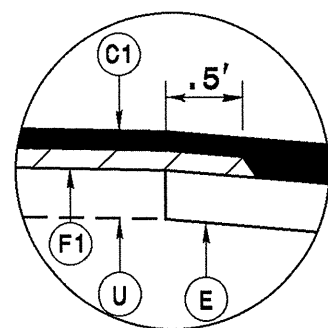
NOTE:
DELETED
MAP # 4

STATE	PROJECT NO.	SHEET NO.	TOTAL SHEETS
N.C.	7CR.10791.32, ETC.	2	6

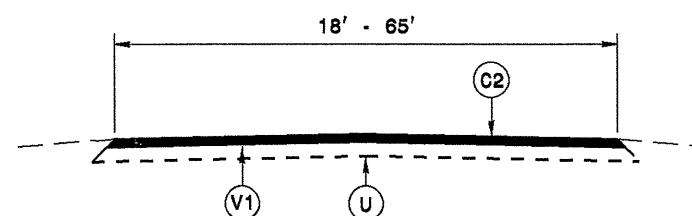
7CR.10791.32
7CR.20791.32
7.107912



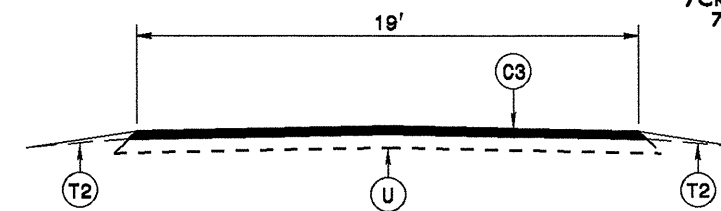
TYPICAL SECTION NO. 1
TO BE USED ON:
MAP 1: STA. 0+00 TO STA. 157+15
STA. 166+50 TO STA. 169+10
AND
MAP 3 STA. 0+00 TO STA. 198+70



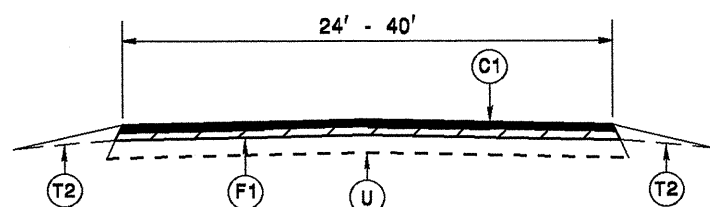
DETAIL A



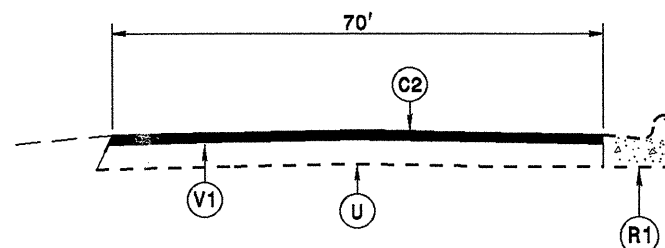
TYPICAL SECTION NO. 5
TO BE USED ON:
MAP 2: STA. 0+00 TO STA. 2+60
STA. 6+68 TO STA. 7+58
STA. 17+82 TO STA. 18+90



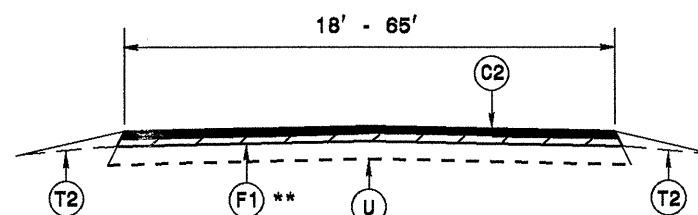
TYPICAL SECTION NO. 9
TO BE USED ON MAP 14



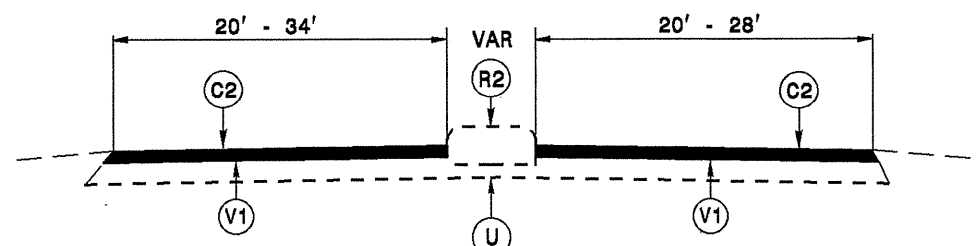
TYPICAL SECTION NO. 2
TO BE USED ON:
MAP 1: STA. 157+15 TO STA. 166+50
AND
MAP 3 STA. 198+70 TO STA. 344+95



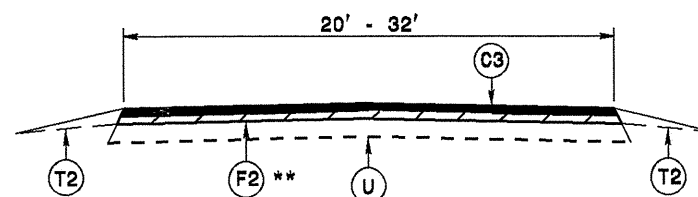
TYPICAL SECTION NO. 6
TO BE USED ON:
MAP 2: STA. 16+05 TO STA. 16+83



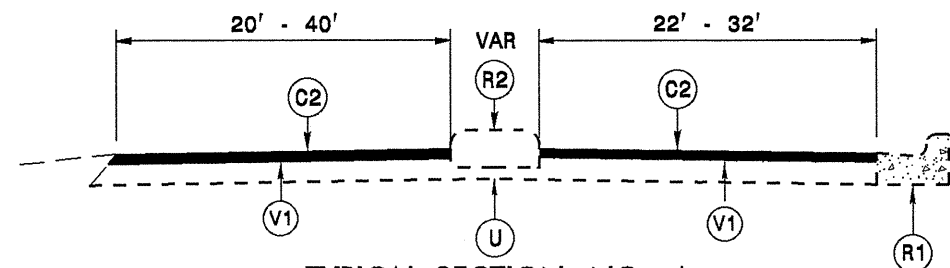
TYPICAL SECTION NO. 7
TO BE USED ON:
MAP 2: STA. 18+90 TO STA. 144+20
AND MAP 8
** NO SEAL ON MAP 8 STA. 115+30 TO STA. 130+40



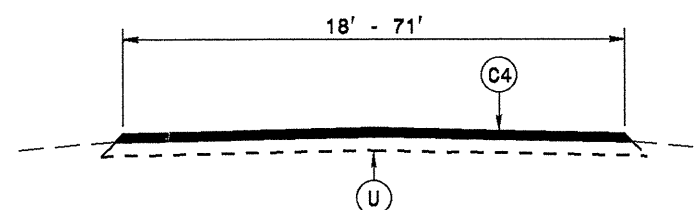
TYPICAL SECTION NO. 3
TO BE USED ON:
MAP 2: STA. 2+60 TO STA. 6+68
STA. 7+58 TO STA. 11+95



TYPICAL SECTION NO. 8
TO BE USED ON MAPS 5, 6, 7, 9, 10, 11, AND 12
** NO SEAL ON MAP 7 STA. 218+75 TO STA. 242+70.



TYPICAL SECTION NO. 4
TO BE USED ON:
MAP 2: STA. 11+95 TO STA. 16+05
STA. 16+83 TO STA. 17+82



TYPICAL SECTION NO. 9
TO BE USED ON MAP 13

PAVEMENT SCHEDULE

C1	PROP. APPROX. 1½" ASPHALT CONCRETE SURFACE COURSE, TYPE S9.5B, AT AN AVERAGE RATE OF 168 LBS. PER SQ. YD.		
C2	PROP. APPROX. 1½" ASPHALT CONCRETE SURFACE COURSE, TYPE SF9.5A, AT AN AVERAGE RATE OF 165 LBS. PER SQ. YD.		
C3	PROP. APPROX. 1¼" ASPHALT CONCRETE SURFACE COURSE, TYPE SF9.5A, AT AN AVERAGE RATE OF 138 LBS. PER SQ. YD.		
C4	PROP. APPROX. 1" ASPHALT CONCRETE SURFACE COURSE, TYPE SF9.5A, AT AN AVERAGE RATE OF 110 LBS. PER SQ. YD.		
D	PROP. APPROX 3" ASPHALT CONCRETE INTERMEDIATE COURSE TYPE I19.0B, AT AN AVERAGE RATE OF 342LBS. PER SQ. YD.		
E	PROP. APPROX. 8" ASPHALT CONCRETE BASE COURSE, TYPE B25.0B, AT AN AVERAGE RATE OF 456 LBS. PER SQ. YD. IN EACH OF TWO LAYERS		
F1	AST MAT COAT, 67 STONE		
F2	AST MAT COAT, 78M STONE		
R1	EXISTING CONCRETE CURB & GUTTER		
R2	EXISTING CONCRETE ISLAND		
T1	SHOULDER RECONSTRUCTION, AS DIRECTED BY THE ENGINEER.		
T2	INCIDENTAL STONE BASE IN LOW SHOULDER AREAS AS DIRECTED BY THE ENGINEER.		
U	EXISTING PAVEMENT.		
V1	1½" MILLING	V2	3" MILLING

*** NO ASPHALT PAVEMENT ON ANY BRIDGES IN THIS CONTRACT.**

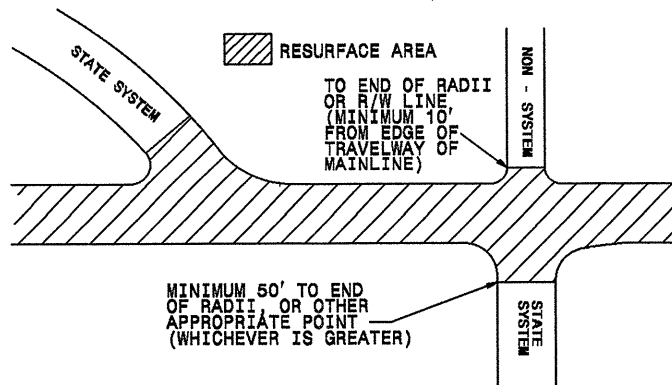
06-OCT-2010 07:26 \\rockingham\10-5-10\cadd\tyj\sh1.dgn

STATE	PROJECT NO.	SHEET NO.	TOTAL SHEETS
N.C.	7CR.10791.32, ETC.	3	6

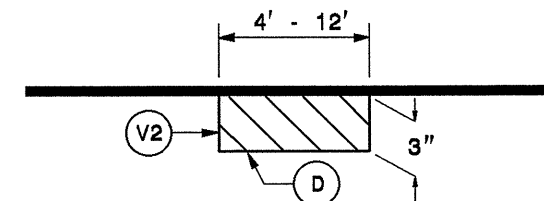
7CR.10791.32
7CR.20791.32
7.107912

PAVING DETAIL 2 MAIN LINE IS BEING RESURFACED

NOTE: NON-SYSTEM (CITY STREET, PRIVATE DRIVE, SCHOOL BUS DRIVE)

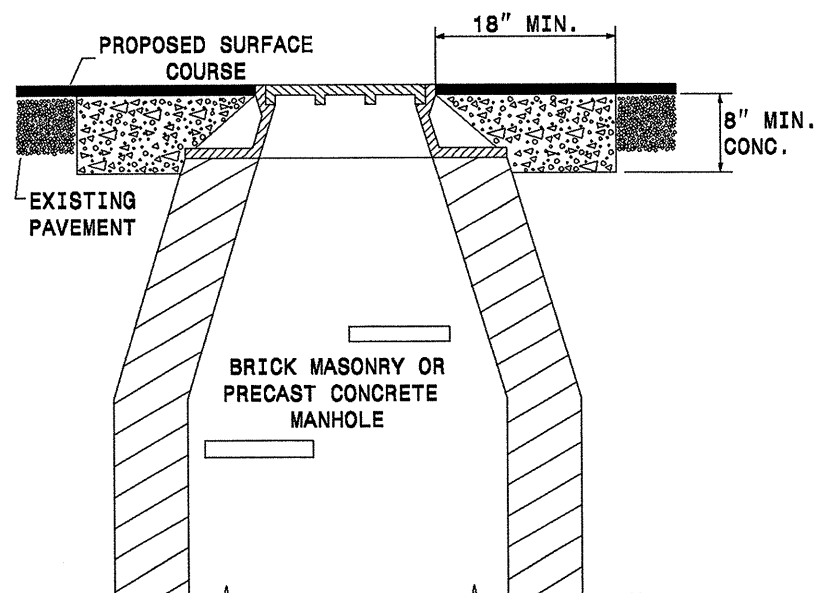


PATCHING DETAIL



USE FOR PATCHING ON ALL MAPS

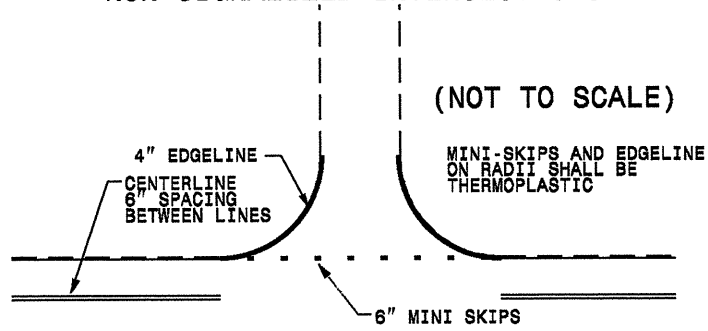
MILL EXISTING ASPHALT PAVEMENT 3" IN DEPTH AND FILL WITH INTERMEDIATE COURSE I19.0B AT LOCATIONS AS DIRECTED BY THE ENGINEER



NOTES:

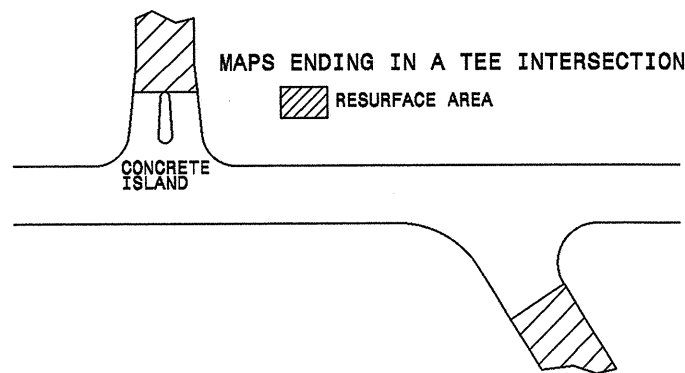
- MORTAR SHALL BE MIXED TO NCDOT SPECIFICATIONS.
- ALL FAULTY EXISTING BRICKWORK TO BE REMOVED AND REPLACED WITH NEW BRICK MASONRY.
- EXCAVATION FOR THE ADJUSTMENT SHALL BE SHEER CUT ON ALL SIDES.
- USE RAPID SET GROUT, MORTAR OR CONCRETE AS NOTED IN PROJECT SPECIAL PROVISIONS. CLASS B CONCRETE MAY BE USED WHEN THE ADJUSTMENTS ARE NOT IN THE TRAVEL LANE.

TO BE USED AT ALL NON-SIGNALIZED INTERSECTIONS

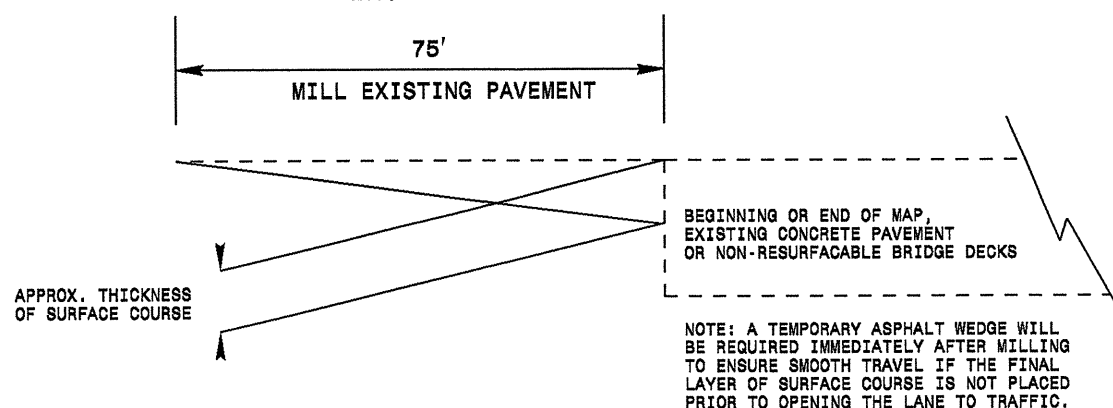


NOTE: MINI SKIPS SHALL BE PLACED ON A 10' CYCLE, CONTAINING AN 8' AND 2' SKIP, THE WIDTH OF THE SKIP SHALL BE 6'.

PAVING DETAIL 1 MAIN LINE IS NOT BEING RESURFACED



INCIDENTAL MILLING DETAIL



*** NO ASPHALT PAVEMENT ON ANY BRIDGES IN THIS CONTRACT.**

PAVEMENT SCHEDULE

C1	PROP. APPROX. 1½" ASPHALT CONCRETE SURFACE COURSE, TYPE S9.5B, AT AN AVERAGE RATE OF 168 LBS. PER SQ. YD.
C2	PROP. APPROX. 1½" ASPHALT CONCRETE SURFACE COURSE, TYPE SF9.5A, AT AN AVERAGE RATE OF 165 LBS. PER SQ. YD.
C3	PROP. APPROX. 1¼" ASPHALT CONCRETE SURFACE COURSE, TYPE SF9.5A, AT AN AVERAGE RATE OF 138 LBS. PER SQ. YD.
C4	PROP. APPROX. 1" ASPHALT CONCRETE SURFACE COURSE, TYPE SF9.5A, AT AN AVERAGE RATE OF 110 LBS. PER SQ. YD.
D	PROP. APPROX 3" ASPHALT CONCRETE INTERMEDIATE COURSE TYPE I19.0B, AT AN AVERAGE RATE OF 342LBS. PER SQ. YD.
E	PROP. APPROX. 8" ASPHALT CONCRETE BASE COURSE, TYPE B25.0B, AT AN AVERAGE RATE OF 456 LBS. PER SQ. YD. IN EACH OF TWO LAYERS
F1	AST MAT COAT, 67 STONE
F2	AST MAT COAT, 78M STONE
R1	EXISTING CONCRETE CURB & GUTTER
R2	EXISTING CONCRETE ISLAND
T1	SHOULDER RECONSTRUCTION, AS DIRECTED BY THE ENGINEER.
T2	INCIDENTAL STONE BASE IN LOW SHOULDER AREAS AS DIRECTED BY THE ENGINEER.
U	EXISTING PAVEMENT.
V1	1½" MILLING
V2	3" MILLING

06-OCT-2010 09:47 :s:\division\7.107912-rockingham\REVISED 2011 ROCKINGHAM 10-5-10\cadd\typ-sh.t2.dgn

NOTE: MAP 4 DELETED

PROJECT NO.	SHEET NO.	TOTAL NO.
7CR.10791.32, 7CR.20791.32 7.107912	4	6

SUMMARY OF QUANTITIES

PROJECT NO.	COUNTY	MAP NO.	ROUTE	DESCRIPTION	TYP NO.	FINAL SURFACE TESTING REQUIRED	LENGTH MI.	WIDTH FT.	INCIDENTAL STONE BASE TONS	SHOULDER RECONSTRUCTION SMI	MILLING ASPHALT PAVEMENT, 1 1/2" DEPTH SY	INCIDENTAL MILLING SY	ASPHALT CONC BASE COURSE, TYPE B25.0B TONS	ASPHALT CONC SURFACE COURSE, TYPE S9.5B TONS	ASPHALT CONC SURFACE COURSE, TYPE SF9.5A TONS	ASPHALT BINDER FOR PLANT MIX, GRADE PG 64-22 TONS	ASPHALT SURFACE TREATMENT, MAT COAT, #78M STONE SY	GENERIC PAVING ITEM [ASPHALT SURFACE TREATMENT, MAT COAT, #67M STONE] SY	GENERIC PAVING ITEM - [3" PATCHING OF EXISTING PAVEMENT] TON	ADJUSTMENT OF MANHOLES EA	SEED & MULCHING AC	RESIDENTIAL SEEDING AC	TEMPORARY SILT FENCE LF	WATTLE LF				
7CR.10791.32	Rockingham	1	US 158	FROM SR 2351 (WITTY RD) TO GUILFORD CO LINE	1	NO	2.929	24	133	6.06			3,657	4,317		416	41,240		54.00		1.10	1.10	300	96				
					1	NO	0.047	24-38							59	82		7	855									
					2	NO	0.073	38									137		8	1,627								
					2	NO	0.036	38-40									191		11	824								
					2	NO	0.068	36-40									128		8	1,516								
					1	NO	0.049	24-36									61	83	8	862								
				TOTAL FOR MAP NO. 1					3.202		133	6.06			3,777	4,938		458	46,924		54.00		1.10	1.10	300	96		
			2	US 29 BUS	FROM JOINT EAST OF US 29 BYPASS TO JOINT WEST OF US 29 (MAYFIELD RD)	5	NO	0.049	39-48	561		1,251					103	7			54.00							
					3	NO	0.031	40-45					773					64	4									
					3	NO	0.037	40-56						1,042				86	6									
					3	NO	0.009	56-60						306				25	2									
					5	NO	0.017	65						648				54	3									
					3	NO	0.028	45-54						813				67	4									
					3	NO	0.005	44-45						131				11	1									
						DO NOT PAVE - BRIDGE #152																						
					4	NO	0.058	49-54						1,752				145	9									
					4	NO	0.02	54-65						698				58	4									
					6	NO	0.015	70						616				51	3									
					4	NO	0.019	49-64						630				52	3									
					5	NO	0.02	42-62						610				50	3									
					7	NO	0.026	28-42										44	3				534					
			7	NO	0.007	22-28										9	1				103							
			7	NO	1.549	22										1,719	112				19,992							
			7	NO	0.74	24					200					864	56				10,419							
				DO NOT PAVE - BRIDGE #183																								
			7	NO	0.009	27-28								153		12	1				145							
				TOTAL FOR MAP NO. 2					2.732		561		9,270	353		3,414	222				31,193							
			3	NC 770	FROM STOKES CO LINE TO TO JOINT APPROX. 500' EAST OF US 220 RAMP	1	NO	0.058	23	250	7.52				72	98		9			783	226.00		1.37	1.37	400	128	
					1	NO	0.069	21-23								86	89		9			891						
					1	NO	3.609	21								4,506	4,711		476			44,463						
	1	NO			0.027	21-24								34	35		4			356								
	2	NO			0.223	24									285		17			3,140								
	2	NO			0.924	24	441				200				1,219		73			13,010	92.00							
		DO NOT PAVE - BRIDGE #35																										
	2	NO			1.365	24																						
		DO NOT PAVE - BRIDGE #69																										
	2	NO			0.027	24-29							221			35	2				420							
	2	NO	0.136	24										162	10				1,915									
		TOTAL FOR MAP NO. 3					6.533		691	7.52		821	4,698	8,437		708			84,197		318		400	128				
	TOTAL FOR PROJ NO. 7CR.10791.32						12.467		1,385	13.58	9,270	1,174	8,475	13,375	3,414	1,388		46,924		115,390		426.00		700	224			
7CR.20791.32	Rockingham	5	1 - SR 1779 (S. EDGEWOOD DR)	FROM SR 1747 (STADIUM DR) TO NEW EOM	8	NO	0.693	20	89						572	37		8,131	72.00	1								
			TOTAL FOR MAP NO. 5					0.693		89						572	37		8,131		72.00	1						
		6	1 - SR 1964 (MEBANE BRIDGE RD)	FROM NC 14 TO EOM	8	NO	0.043	20-32	103								45	3		656	47.00							
			TOTAL FOR MAP NO. 6					0.408		103						341	22		6,581		47.00					0		
		7	1 - SR 1945 (MOIR MILL RD)	FROM SR 2039 (BETHLEHEM CHURCH RD) TO SR 2023 (GUERRANT SPRINGS RD)	8	NO	0.019	21-24	591								17	1		251	65.00							
		DO NOT PAVE (INTERSECTION OF SR 2715)																										
		TOTAL FOR MAP NO. 7					4.597		591					4,047	263		50,677		65.00					0				

NOTE: MAP 4 DELETED

PROJECT NO.	SHEET NO.	TOTAL NO.
7CR.10791.32, 7CR.20791.32 7.107912	5	6

SUMMARY OF QUANTITIES

PROJECT NO.	COUNTY	MAP NO.	ROUTE	DESCRIPTION	TYP	FINAL SURFACE TESTING REQUIRED	LENGTH MI	WIDTH FT	INCIDENTAL STONE BASE TONS	SHOULDER RECONSTRUCTION SMI	MILLING ASPHALT PAVEMENT, 1 1/2" DEPTH SY	INCIDENTAL MILLING SY	ASPHALT CONC BASE COURSE, TYPE B25.0B TONS	ASPHALT CONC SURFACE COURSE, TYPE S9.5B TONS	ASPHALT CONC SURFACE COURSE, TYPE SF9.5A TONS	ASPHALT BINDER FOR PLANT MIX, GRADE PG 64-22 TONS	ASPHALT SURFACE TREATMENT, MAT COAT, #78M STONE SY	GENERIC PAVING ITEM [ASPHALT SURFACE TREATMENT, MAT COAT, #67M STONE] SY	GENERIC PAVING ITEM [3" PATCHING OF EXISTING PAVEMENT] TON	ADJUSTMENT OF MANHOLES EA	SEED & MULCHING AC	RESIDENTIAL SEEDING AC	TEMPORARY SILT FENCE LF	WATTLE LF				
7CR.20791.32	Rockingham	8	1 - SR 1767 (MAYFIELD RD)	FROM US 29 BUS TO NC 700	7	NO	0.084	21-24	721							92	6	1,109	718.00									
					7	NO	0.011	21-25										12	1	148								
					7	NO	0.026	18-25											127	8	328							
					7	NO	1.699	18							150				1,510	98	17,941							
							DO NOT PAVE - BRIDGE #110		NO	0.033	21																	
								7	NO	0.33	18																	
								7	NO	0.052	18-24																	
								7	NO	0.053	24																	
								7	NO	0.017	24-27																	
							DO NOT PAVE - BRIDGE #109		NO	0.019	27																	
								7	NO	0.021	23-27																	
								7	NO	0.124	18-23																	
								7	NO	1.613	18																	
								7	NO	0.014	18-23																	
							TOTAL FOR MAP NO. 8			4.096			721			721				3,845	249	40,212	718.00					0
				9	1 - SR 2614 (HIGH ROCK RD)	FROM NC 87 TO GUILFORD CO LINE	8	NO	0.613	20	307			167				557	36	7,193								
							DO NOT PAVE - BRIDGE #91		NO	0.039	20																	
								8	NO	2.437	20																	
					TOTAL FOR MAP NO. 9			3.089			307			334				2,011	131	28,594						0		
				10	1 - SR 2600 (MIZPAH CHURCH RD)	FROM NC 87 TO US 29 BUS	8	NO	0.019	22-29	494																	
								8	NO	0.016	21-22																	
								8	NO	0.414	21																	
							DO NOT PAVE - BRIDGE #87		NO	0.012	24																	
								8	NO	1.725	21																	
								8	NO	0.045	21-25																	
								8	NO	0.044	25																	
							DO NOT PAVE - BRIDGE #116		NO	0.056	34																	
								8	NO	0.073	25																	
								8	NO	0.027	21-25																	
								8	NO	0.408	21																	
							DO NOT PAVE - BRIDGE #85		NO	0.027	22																	
						8	NO	0.736	21																			
						8	NO	0.027	21-25																			
					TOTAL FOR MAP NO. 10			3.629			494			1,116				3,278	215	43,985					629.00	0		
				11	1 - SR 2435 (WATER WORKS RD)	FROM US 29 BUS TO EOM	8	NO	1.138	21	160																	
					TOTAL FOR MAP NO. 11			1.138			160							989	64	14,020					47.00	0		
				12	1 - SR 2380 (BAKERS CROSSROADS)	FROM NC 704 TO NC 65	8	NO	0.047	22-31	222																	
									8	NO	1.592	22																
					TOTAL FOR MAP NO. 12			1.639			222							1,469	95	21,278					72.00	0		
				13	1 - SR 1203 (LAKEFIELD RD)	FROM SR 1110 (ELLISBORO RD) TO EOM	9	NO	0.011	18-65	20																	
								9	NO	0.146	18																	
								9	NO	0.009	18-71																	
								9	NO	0.008	0-71																	
					TOTAL FOR MAP NO. 13			0.174			20							132	9						30.00	0		
		14	SR 1788 IVY RD	FROM 2561 (OLD 29) TO BUS 29	10	NO	0.073	19	13																			
			TOTAL FOR MAP NO. 14			0.073			13							56	4							0				
			TOTAL FOR PROJ NO. 7CR.20791.32			19.536			2,720			2,171				17,297	1,125	180,459	40,212	1,772.00	1			0				
7.107912	Rockingham	2	US 29 BUS	FROM JOINT EAST OF US 29 BYPASS TO JOINT WEST OF US 29		NO	***	***																				
			TOTAL FOR MAP NO. 2																									
	3	NC 770	FROM STOKES CO LINE TO JOINT APPROX. 500' EAST OF US 220 RAMP		NO	***	***																					
			TOTAL FOR MAP NO. 3																									
			TOTAL FOR PROJ NO. 7.107912			0																						
GRAND TOTAL							32.003		4,105	13.58	9,270	3,345	8,475	13,375	20,711	2,513	227,383	155,602	2,198.00	1	2.47	2.47	700	224				

*** SEPARATE WBS# FOR MARKERS

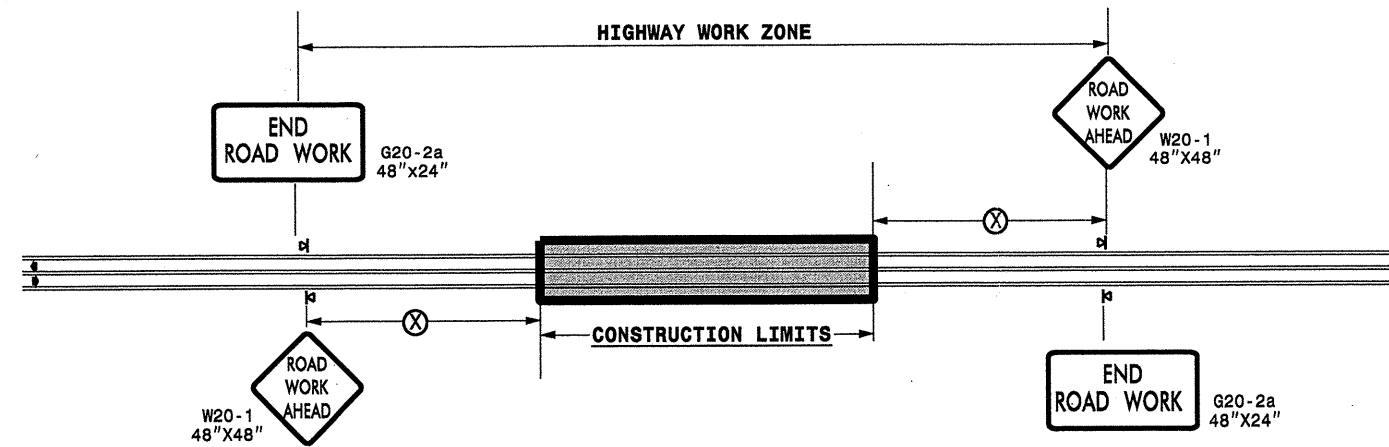
PROJECT NO.	SHEET NO.	TOTAL NO.
7CR.10791.32, 7CR.20791.32 7.107912,	6	6

THERMOPLASTIC AND PAINT QUANTITIES

PROJECT NO	COUNTY	MAP NO	ROUTE	DESCRIPTION	4685000000-E	4686000000-E			4690000000-E	4695000000-E	4710000000-E	4725000000-E		4810000000-E		4905000000-N	
					4" X 90 M WHITE THERMO LF	4" X 120 M WHITE THERMO LF	4" X 120 M YELLOW THERMO LF	6" X 120 M WHITE THERMO LF	8" X 90 M YELLOW THERMO LF	24" X 120 M WHITE THERMO LF	THERMO LT ARROW 90 M EA	THERMO RT ARROW 90 M EA	4" WHITE PAINT LF	4" YELLOW PAINT LF	SNOWPLOWABLE PAVEMENT MARKERS EA		
7CR.10791.32	Rockingham	1	1 - US 158	FROM SR 2351 (WITTY RD) TO GUILFORD CO LINE	33,820	523	25,340	266	445	60	4					211	
		TOTAL FOR MAP NO. 1			33,820	523	25,340	266	445	60	4					211	
		2	1 - US 29 BUS	FROM JOINT EAST OF US 29 BYPASS TO JOINT WEST OF US 29 (MAYFIELD RD)	28,840	465	25,392	356	140	48	4	2					
		TOTAL FOR MAP NO. 2			28,840	465	25,392	356	140	48	4	2					
7CR.20791.32	Rockingham	3	1 - NC 770	FROM STOKES CO LINE TO JOINT APPROX. 500' EAST OF US 220 RAMP	69,380	20	60,400	406									
		TOTAL FOR MAP NO. 3			69,380	20	60,400	406									
		TOTAL FOR PROJ NO. 7CR.10791.32				132,040	1,008	111,132	1,028	585	108	8	2				211
					112,140					10							
7CR.20791.32	Rockingham	5	1 - SR 1779 (S. EDGEWOOD DR)	FROM SR 1747 (STADIUM DR) TO NEW EOM	300			46						14,040	11,413		
		TOTAL FOR MAP NO. 5			300			46							14,040	11,413	
		6	1 - SR 1964 (MEBANE BRIDGE RD)	FROM NC 14 TO EOM	75			18							8,450	8,600	
		TOTAL FOR MAP NO. 6			75			18							8,450	8,600	
		7	1 - SR 1945 (MOIR MILL RD)	FROM SR 2039 (BETHLEHEM CHURCH RD) TO SR 2023 (GUERRANT SPRINGS RD)	225			51							96,630	88,768	
		TOTAL FOR MAP NO. 7			225			51							96,630	88,768	
		8	1 - SR 1767 (MAYFIELD RD)	FROM US 29 BUS TO NC 700	375			88							85,770	80,638	
		TOTAL FOR MAP NO. 8			375			88							85,770	80,638	
		9	1 - SR 2614 (HIGH ROCK RD)	FROM NC 87 TO GUILFORD CO LINE	750			60							63,732	56,830	
		TOTAL FOR MAP NO. 9			750			60							63,732	56,830	
		10	1 - SR 2600 (MIZPAH CHURCH RD)	FROM NC 87 TO US 29 BUS	525			140							75,590	61,763	
		TOTAL FOR MAP NO. 10			525			140							75,590	61,763	
		11	1 - SR 2435 (WATER WORKS RD)	FROM US 29 BUS TO EOM	150			16							23,740	24,040	
		TOTAL FOR MAP NO. 11			150			16							23,740	24,040	
12	1 - SR 2380 (BAKERS CROSSROADS)	FROM NC 704 TO NC 65											34,620	28,730			
TOTAL FOR MAP NO. 12													34,620	28,730			
13	1 - SR 1203 (LAKEFIELD RD)	FROM SR 1110 (ELLISBORO RD) TO EOM															
TOTAL FOR MAP NO. 13																	
14	SR 1788 IVY RD	FROM 2561 (OLD 29) TO BUS 29												1,540	1,540		
TOTAL FOR MAP NO. 14														1,540	1,540		
TOTAL FOR PROJ NO. 7CR.20791.32					2,400		419							404,112	362,322		
													766,434				
7.107912	Rockingham	2	US 29 BUS	FROM JOINT EAST OF US 29 BYPASS TO JOINT WEST OF US 29												180	
		TOTAL FOR MAP NO. 2															180
		3	NC 770	FROM STOKES CO LINE TO JOINT APPROX. 500' EAST OF US 220 RAMP													431
TOTAL FOR MAP NO. 3																431	
TOTAL FOR PROJ NO. 7.107912																611	
GRAND TOTAL					134,440	1,008	111,132	1,447	585	108	8	2	404,112	362,322	822		
					112,140					10		766,434					

*** SEPARATE WBS# FOR MARKERS

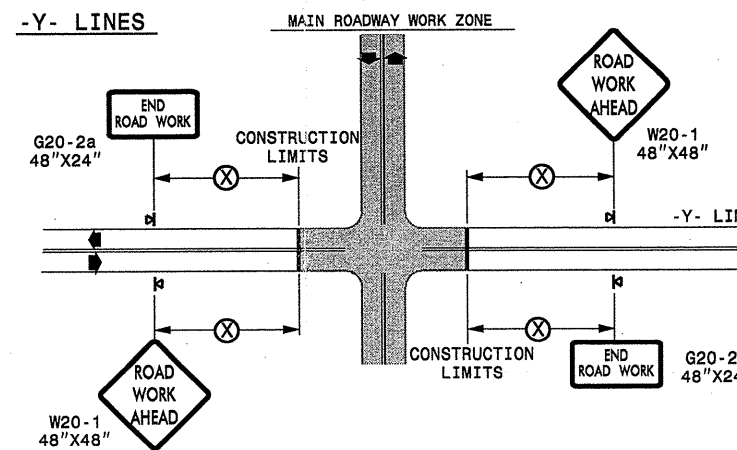
TWO-WAY UNDIVIDED ** (L-LINES)



POSTED SPEED LIMIT (M.P.H.)	RECOMMENDED MINIMUM SIGN SPACING
≤ 50	500'
≥ 55	1000'

STATE OF NORTH CAROLINA
DEPT. OF TRANSPORTATION
DIVISION OF HIGHWAYS
RALEIGH, N.C.

ROADWAYS INTERSECTING ALONG 2 WAY UNDIVIDED WORK ZONE (Y-LINES)



GENERAL NOTES

- USE FLUORESCENT ORANGE SHEETING (TYPE VII OR HIGHER) ON ALL ADVANCE WORK ZONE SIGNS.
- DO NOT INSTALL ADVANCE WARNING SIGNS MORE THAN 3 DAYS PRIOR TO BEGINNING OF WORK.
- ALL SIGN SPACING DIMENSIONS ARE APPROXIMATE, FIELD ADJUST AS NECESSARY OR AS DIRECTED.
- USE PORTABLE WORK ZONE SIGNS ONLY WITH PORTABLE WORK ZONE SIGN STANDS SPECIFICALLY DESIGNED FOR ONE ANOTHER. PORTABLE WORK ZONE SIGNS MAY BE ROLL UP OR APPROVED COMPOSITE.
- PROVIDE PORTABLE WORK ZONE SIGN STANDS, PORTABLE SIGNS AND SIGN SHEETING WHICH ARE LISTED ON THE NORTH CAROLINA DEPARTMENT OF TRANSPORTATION'S APPROVED PRODUCT LIST OR ACCEPTED AS TRAFFIC QUALIFIED BY THE TRAFFIC CONTROL UNIT.
- ** TWO-WAY UNDIVIDED ADVANCE WARNING SIGN CONFIGURATION MAY BE USED ON URBAN MULTI-LANE FACILITIES WHERE CONDITIONS LIMIT THE USE OF DUAL MOUNTED SIGNS AS DETERMINED BY THE ENGINEER.

LEGEND

- ◀ PORTABLE SIGN
- ➔ DIRECTION OF TRAFFIC FLOW

DETAIL DRAWING
FOR TWO-WAY UNDIVIDED
WORK ZONE WARNING SIGNS

SHEET 1 OF 1

APPROVED: _____	DATE: _____	DETAIL DRAWING FOR TWO-WAY UNDIVIDED ADVANCED WORK ZONE WARNING SIGNS	
SCALE: NONE		REVISIONS	
DATE: _____		7-98	10/01
DWG. BY: _____		10-98	03/04
DESIGN BY: _____		01/01	11/04
REVIEWED BY: _____	CADD FILE		

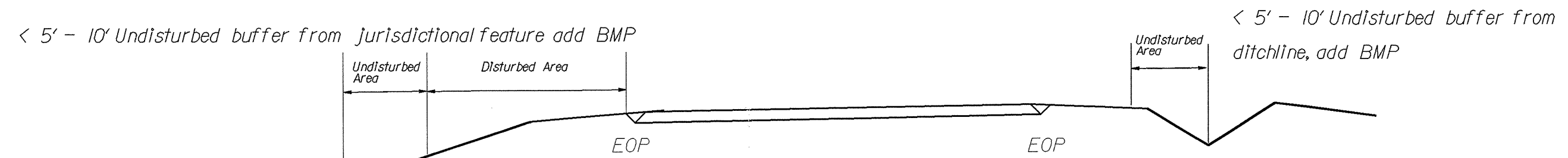
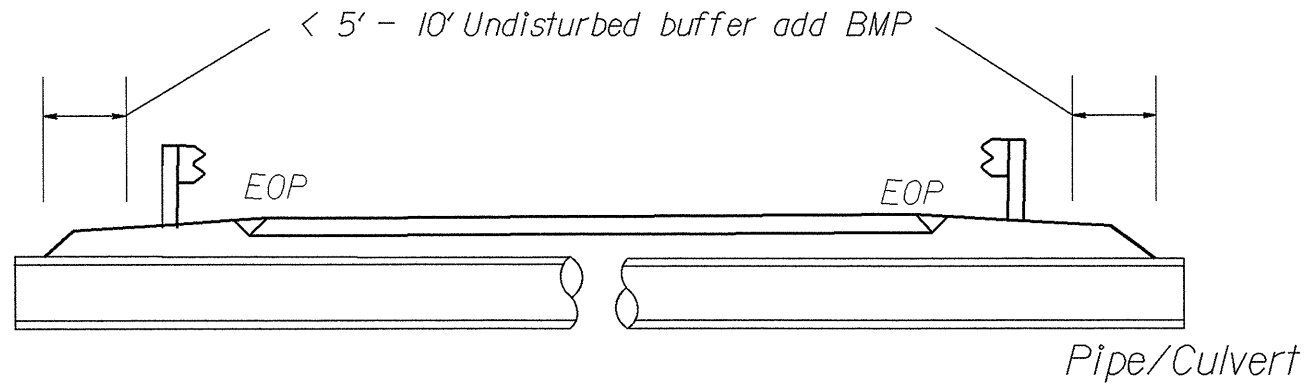
29 SEP 2006 10:26
 D:\DOT\US9500\01\GROUPS-WZTCCC\TMU\WZTC\Resurfacing\2010\CentralRegion\Div07\C202634A-C-7.107912\3.2wayundivurbfrwys\July2006.porttable.dgn
 boschoenbauer AT WZTC24137

PROJECT REFERENCE NO. 7CRJ079I.32, ETC.	SHEET NO. EC-1
RW SHEET NO.	
ROADWAY DESIGN ENGINEER	HYDRAULICS ENGINEER

NOTES: Less than 5' - 10' undisturbed buffer from ROW, ditchline, water feature, or drainage inlet, add BMP.

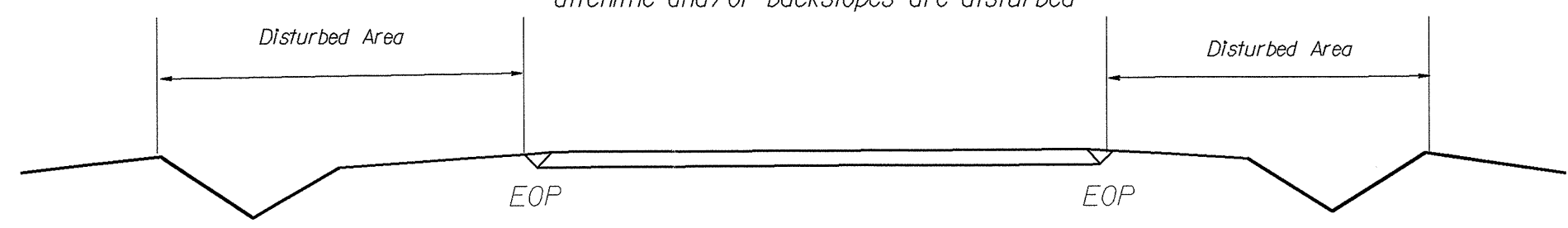
BMP Options: Wattle or Silt Fence

EROSION CONTROL DETAIL

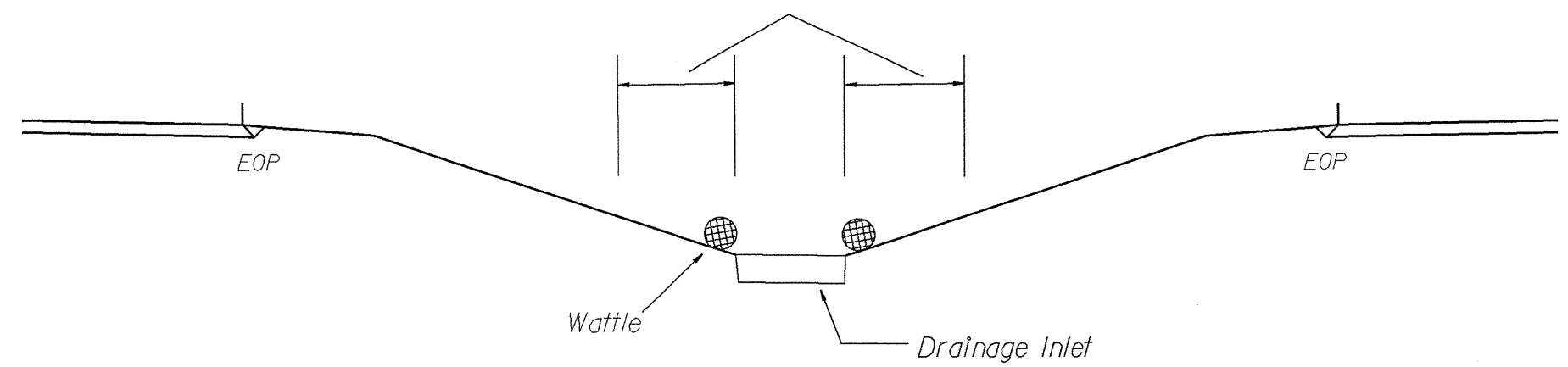


Jurisdictional Feature

Use BMP's if shoulders and/or frontslopes and/or ditchline and/or backslopes are disturbed



< 5' - 10' Undisturbed buffer from inlet, add wattle



NOT TO SCALE