

08-MAR-2010 09:41
 R:\Prof\Files\Signing\CADD\PMR-R-2710-Sgn-PMP-1.dgn
 dhbeard AT WZTC24736

T.I.P.: R-2710

CONTRACT:

**STATE OF NORTH CAROLINA
 DEPARTMENT OF TRANSPORTATION**

**PAVEMENT MARKING PLAN
 WATAUGA COUNTY**

**LOCATION: NC 194 FROM THE AVERY /WATAUGA COUNTY LINE
 TO BROADSTONE ROAD (SR 1112)**

TIP NO. R-2710	SHEET NO. PMP-1
APPROVED:	
DATE: 3/8/10	
SEAL 	

ROADWAY STANDARD DRAWING

THE FOLLOWING ROADWAY STANDARDS AS APPEAR IN "ROADWAY STANDARD DRAWINGS" - PROJECT SERVICES UNIT - N.C. DEPARTMENT OF TRANSPORTATION - RALEIGH, N.C., DATED JULY 2006 ARE APPLICABLE TO THIS PROJECT AND BY REFERENCE HEREBY ARE CONSIDERED A PART OF THESE PLANS:

STD. NO.	TITLE
1205.01	PAVEMENT MARKINGS - LINE TYPES AND OFFSETS
1205.02	PAVEMENT MARKINGS - 2 LANE AND MULTILANE ROADWAYS
1205.04	PAVEMENT MARKINGS - INTERSECTIONS
1205.08	PAVEMENT MARKINGS - SYMBOL AND WORD MESSAGES
1205.10	PAVEMENT MARKINGS - SCHOOL AREAS
1205.12	PAVEMENT MARKINGS - BRIDGES
1250.01	PAVEMENT MARKER SPACING
1253.01	SNOWPLOWABLE RAISED PAVEMENT MARKERS
1261.01	GUARDRAIL AND BARRIER DELINEATOR SPACING
1261.02	GUARDRAIL AND BARRIER DELINEATOR TYPES
1262.01	GUARDRAIL END DELINEATION

GENERAL NOTES

THE FOLLOWING GENERAL NOTES APPLY AT ALL TIMES FOR THE DURATION OF THE CONSTRUCTION PROJECT, EXCEPT WHEN OTHERWISE NOTED IN THE PLAN, OR DIRECTED BY THE ENGINEER.

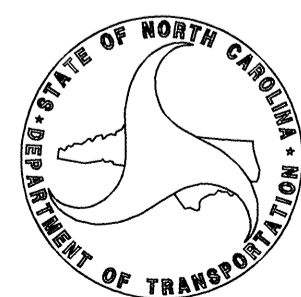
- A) INSTALL PAVEMENT MARKINGS AND PAVEMENT MARKERS ON THE FINAL SURFACE AS FOLLOWS:
- | ROAD NAME | MARKING | MARKER |
|-----------|----------|--------------|
| NC 194 | POLYUREA | SNOWPLOWABLE |
- B) TIE PROPOSED PAVEMENT MARKING LINES TO EXISTING PAVEMENT MARKING LINES.
 - C) REMOVE/REPLACE ANY CONFLICTING/DAMAGED PAVEMENT MARKINGS AND MARKERS.
 - D) PASSING ZONES WILL BE DETERMINED IN THE FIELD AND MUST BE APPROVED BY THE ENGINEER.
 - E) STOPBAR LOCATION AT NON-SIGNALIZED INTERSECTIONS MAY BE ADJUSTED AS DIRECTED BY THE ENGINEER.

PAVEMENT MARKING SCHEDULE

SYMBOL	DESCRIPTION	FINAL PAVEMENT MARKINGS	PAY ITEM QUANTITY	TOTAL
T2	WHITE STOPBAR	THERMOPLASTIC(24", 120 MILS)	128 LF	TOTAL 128 LF
VA	WHITE EDGELINE	POLYUREA (4") Standard Glass Beads	56693 LF	
VD	2 FT. - 13 FT./SP WHITE MINISKIP		123 LF	
VI	YELLOW DOUBLE CENTER		56850 LF	TOTAL 113666 LF
UI	ALPHANUMERIC CHAR.	THERMOPLASTICPAVEMENT MARKING CHARACTER (120 MILS)	6 EA	TOTAL 6 EA
ME	YELLOW & YELLOW	MARKERS SNOWPLOWABLE RAISED PAVEMENT MARKERS	370 EA	TOTAL 370 EA

PLAN PREPARED BY: N.C.D.O.T. SIGNING AND DELINEATION UNIT

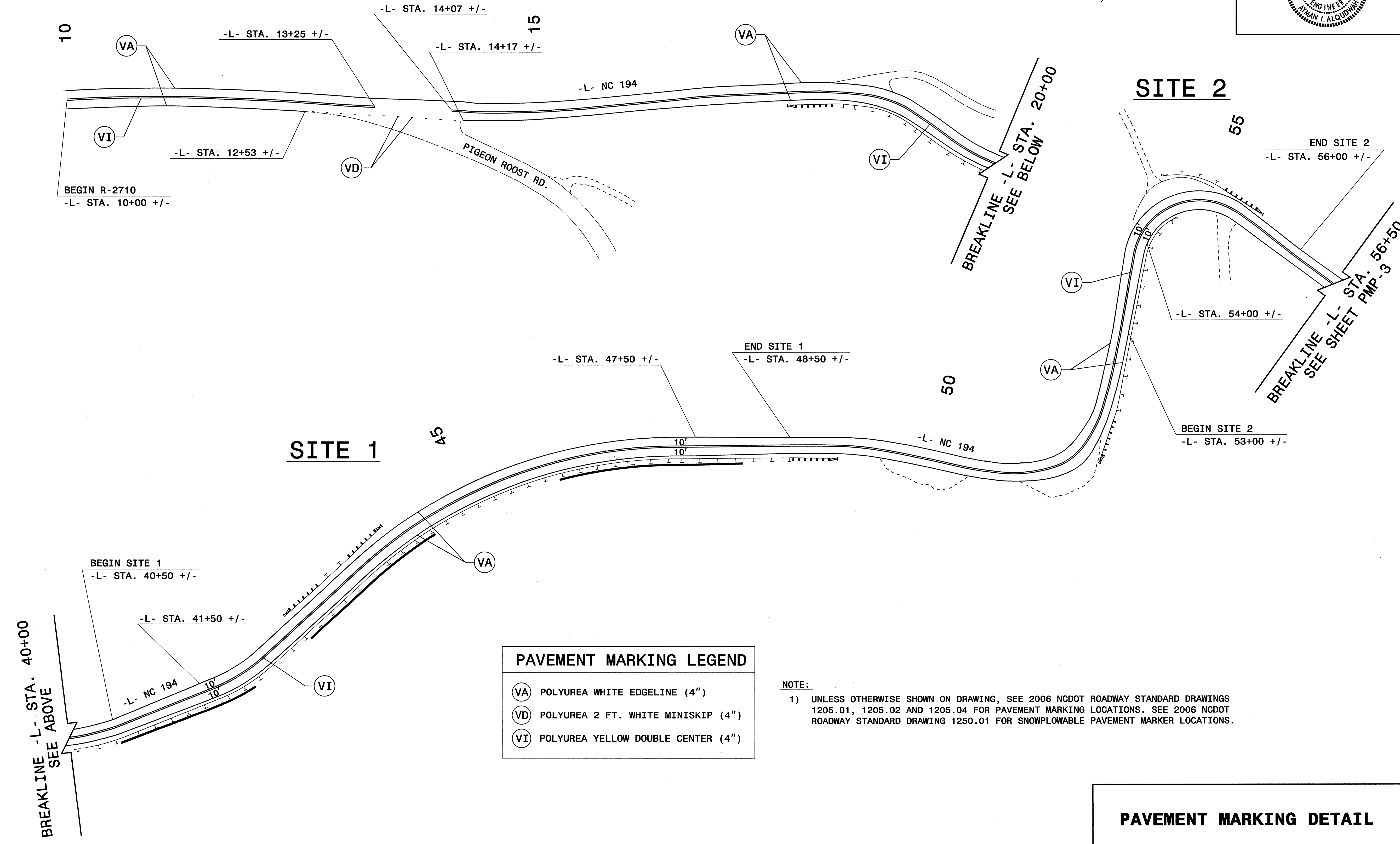
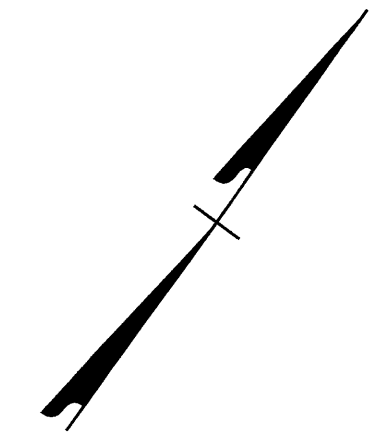
AYMAN I. ALQUDWAH, P.E. SIGNING & DELINEATION REGIONAL ENGINEER
 DERRICK H. BEARD SIGNING & DELINEATION PROJECT DESIGN ENGINEER



INDEX

SHEET NO.	DESCRIPTION
PMP-1	PAVEMENT MARKING PLAN TITLE SHEET AND PAVEMENT MARKING SCHEDULE
PMP-2-5	PAVEMENT MARKING DETAIL

TIP NO. R-2710	SHEET NO. PMP-2
APPROVED: <i>[Signature]</i>	
DATE: 3/8/10	
SEAL	




PAVEMENT MARKING LEGEND	
(VA)	POLYUREA WHITE EDGELINE (4")
(VD)	POLYUREA 2 FT. WHITE MINISKIP (4")
(VI)	POLYUREA YELLOW DOUBLE CENTER (4")

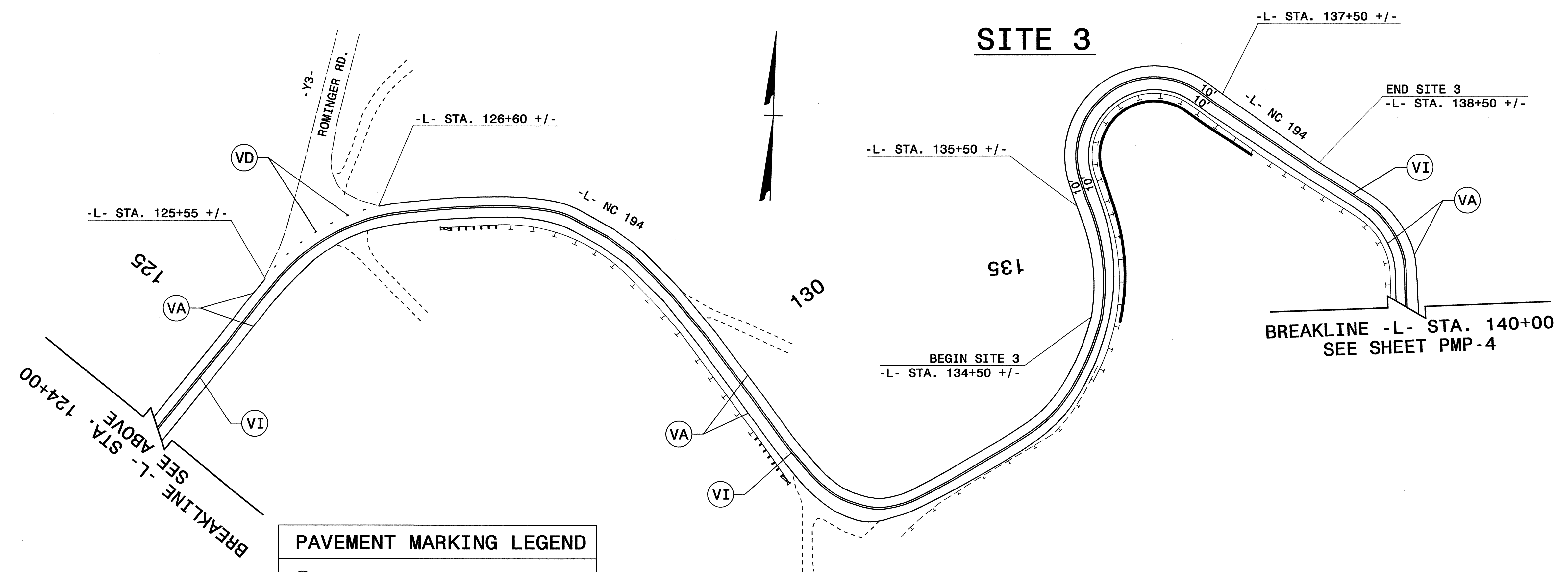
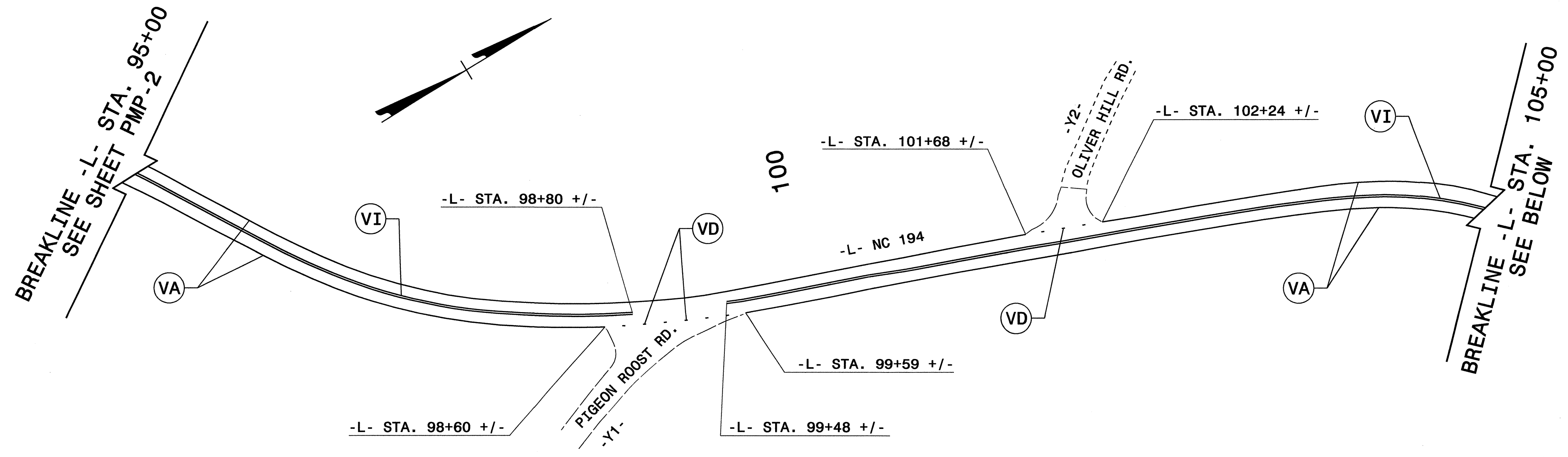
NOTE:
 1) UNLESS OTHERWISE SHOWN ON DRAWING, SEE 2006 NCDOT ROADWAY STANDARD DRAWINGS 1205.01, 1205.02 AND 1205.04 FOR PAVEMENT MARKING LOCATIONS. SEE 2006 NCDOT ROADWAY STANDARD DRAWING 1250.01 FOR SNOWPLOWABLE PAVEMENT MARKER LOCATIONS.

PAVEMENT MARKING DETAIL

08-MAR-2010 09:42
 R:\TrafFic\Signing\CA000\PMF\R-2710_Sgn_PMP_2.dgn
 jhbear\...

TIP NO.	SHEET NO.
R-2710	PMP-3
APPROVED: <i>[Signature]</i>	
DATE: 3/8/10	
SEAL	






PAVEMENT MARKING LEGEND	
(VA)	POLYUREA WHITE EDGELINE (4")
(VD)	POLYUREA 2 FT. WHITE MINISKIP (4")
(VI)	POLYUREA YELLOW DOUBLE CENTER (4")

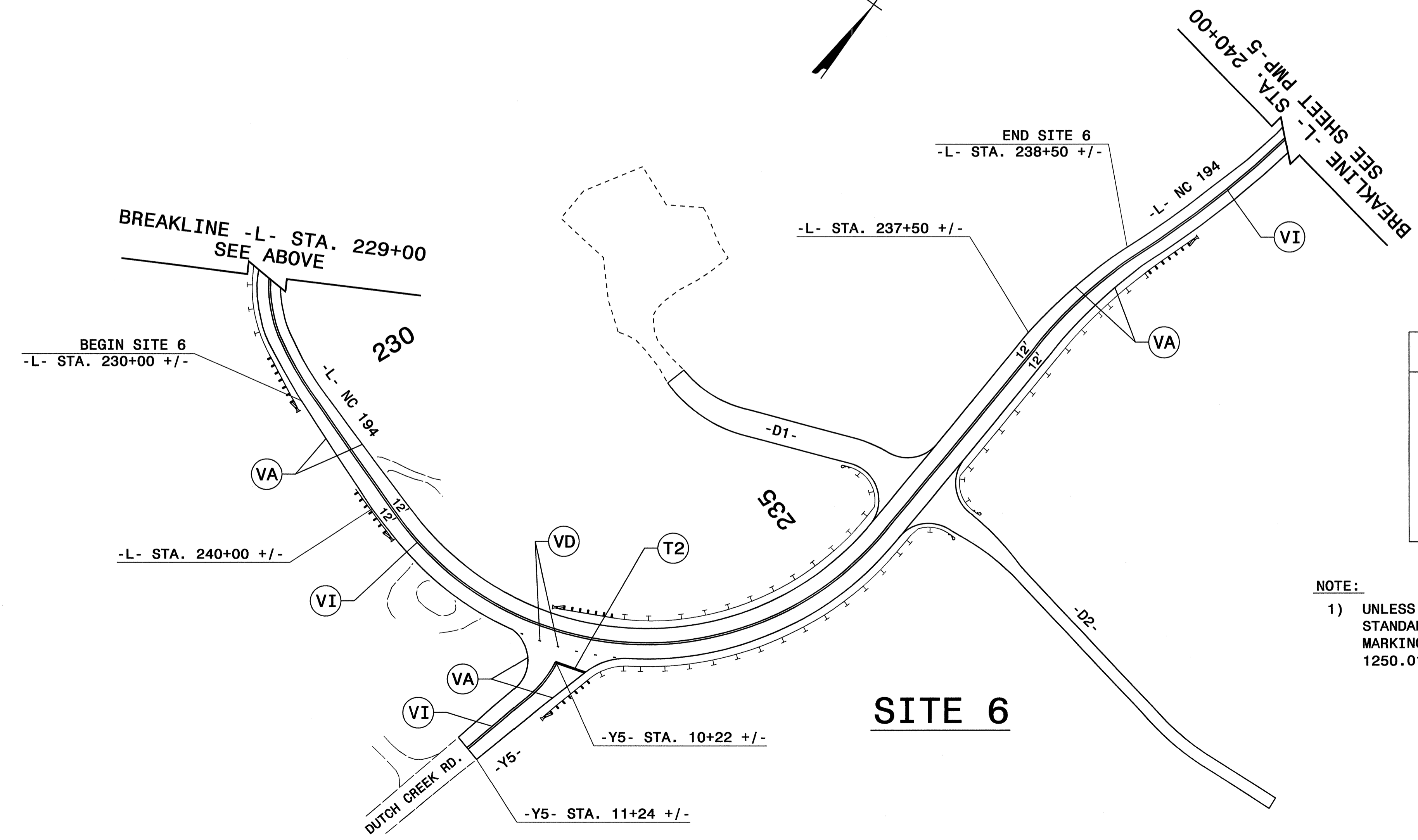
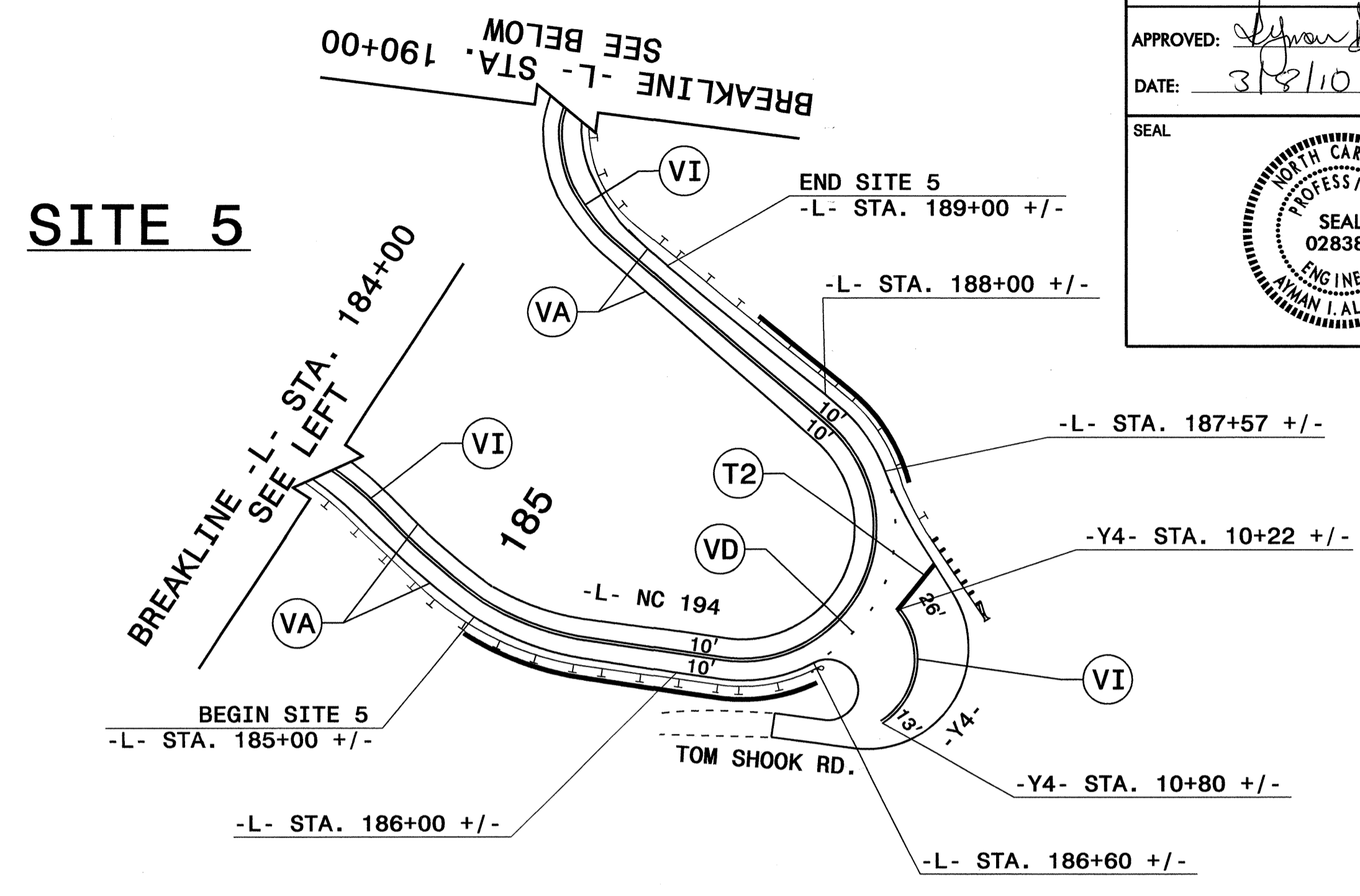
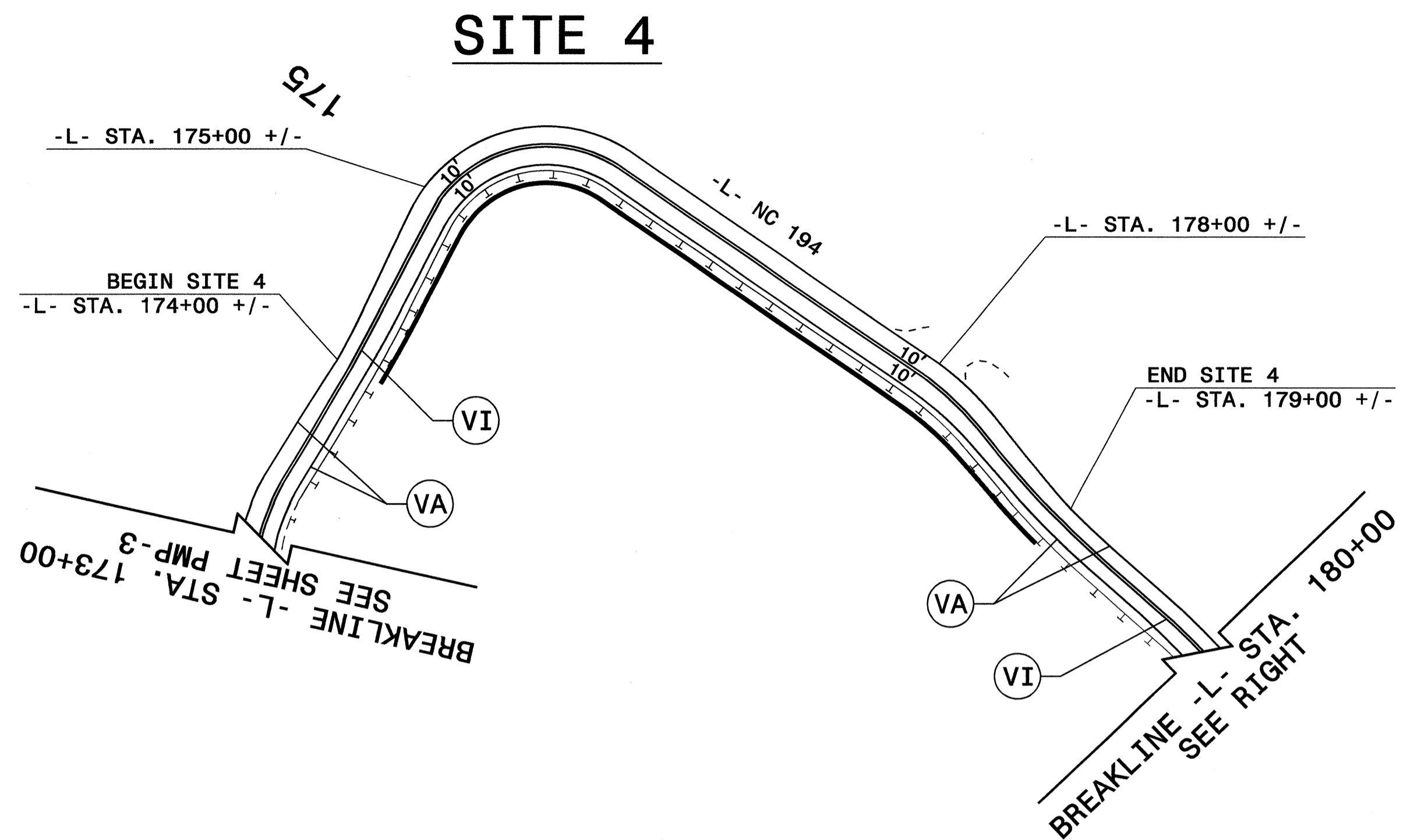
NOTE:
 1) UNLESS OTHERWISE SHOWN ON DRAWING, SEE 2006 NCDOT ROADWAY STANDARD DRAWINGS 1205.01, 1205.02 AND 1205.04 FOR PAVEMENT MARKING LOCATIONS. SEE 2006 NCDOT ROADWAY STANDARD DRAWING 1250.01 FOR SNOWPLOWABLE PAVEMENT MARKER LOCATIONS.

PAVEMENT MARKING DETAIL

08-MAR-2010 09:43
 C:\CAD\DRAWING\2710\CADD\PMR\R-2710_Sgn_PMP_3.dgn
 d:\beard A:\W\124736

TIP NO.	SHEET NO.
R-2710	PMP-4
APPROVED: <i>[Signature]</i>	
DATE: 3/8/10	
SEAL	






PAVEMENT MARKING LEGEND	
(T2)	THERMOPLASTIC WHITE STOPBAR (24", 120 MIL)
(VA)	POLYUREA WHITE EDGELINE (4")
(VD)	POLYUREA 2 FT. WHITE MINISKIP (4")
(VI)	POLYUREA YELLOW DOUBLE CENTER (4")

NOTE:
 1) UNLESS OTHERWISE SHOWN ON DRAWING, SEE 2006 NCDOT ROADWAY STANDARD DRAWINGS 1205.01, 1205.02 AND 1205.04 FOR PAVEMENT MARKING LOCATIONS. SEE 2006 NCDOT ROADWAY STANDARD DRAWING 1250.01 FOR SNOWPLOWABLE PAVEMENT MARKER LOCATIONS.

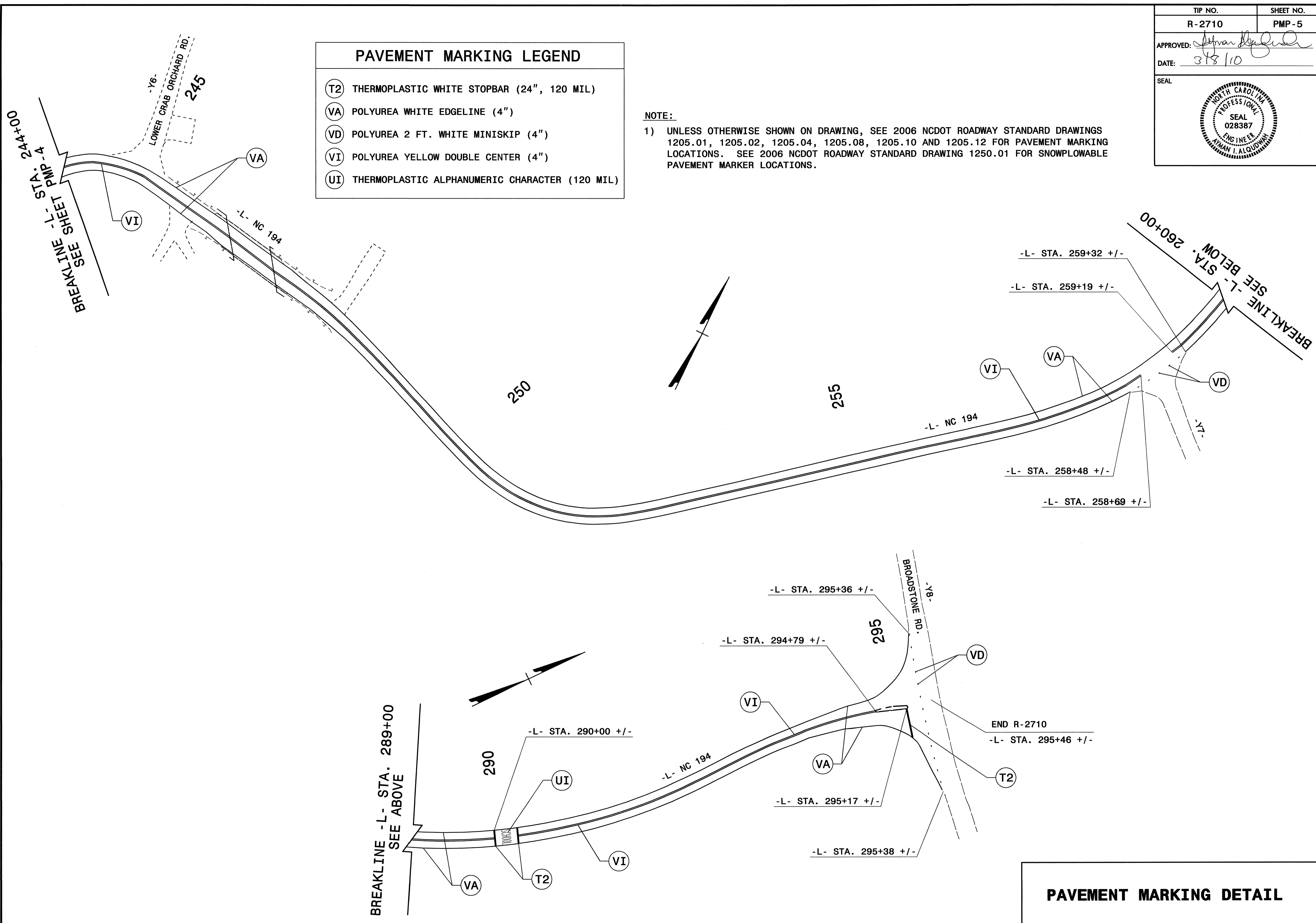
PAVEMENT MARKING DETAIL

08-MAR-2010 09:54
 R:\Projects\2710\CADD\PM\2710_Sgn_PMP_4.dgn
 d:\beard

TIP NO. R-2710	SHEET NO. PMP-5
APPROVED: <i>[Signature]</i>	
DATE: 3/8/10	
SEAL	
	

PAVEMENT MARKING LEGEND	
(T2)	THERMOPLASTIC WHITE STOPBAR (24", 120 MIL)
(VA)	POLYUREA WHITE EDGELINE (4")
(VD)	POLYUREA 2 FT. WHITE MINISKIP (4")
(VI)	POLYUREA YELLOW DOUBLE CENTER (4")
(UI)	THERMOPLASTIC ALPHANUMERIC CHARACTER (120 MIL)

NOTE:
 1) UNLESS OTHERWISE SHOWN ON DRAWING, SEE 2006 NCDOT ROADWAY STANDARD DRAWINGS 1205.01, 1205.02, 1205.04, 1205.08, 1205.10 AND 1205.12 FOR PAVEMENT MARKING LOCATIONS. SEE 2006 NCDOT ROADWAY STANDARD DRAWING 1250.01 FOR SNOWPLOWABLE PAVEMENT MARKER LOCATIONS.



PAVEMENT MARKING DETAIL

08-MAR-2010 09:45
 H:\CADD\CADD\PROJECTS\R-2710_Sign_PMP_5.dgn
 DWG: PMP-5.dwg
 AT: WJL/CJL/26