

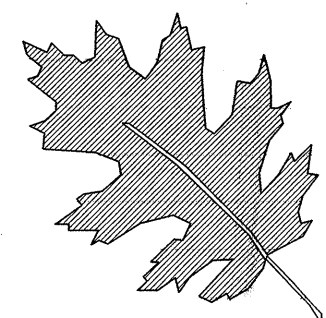
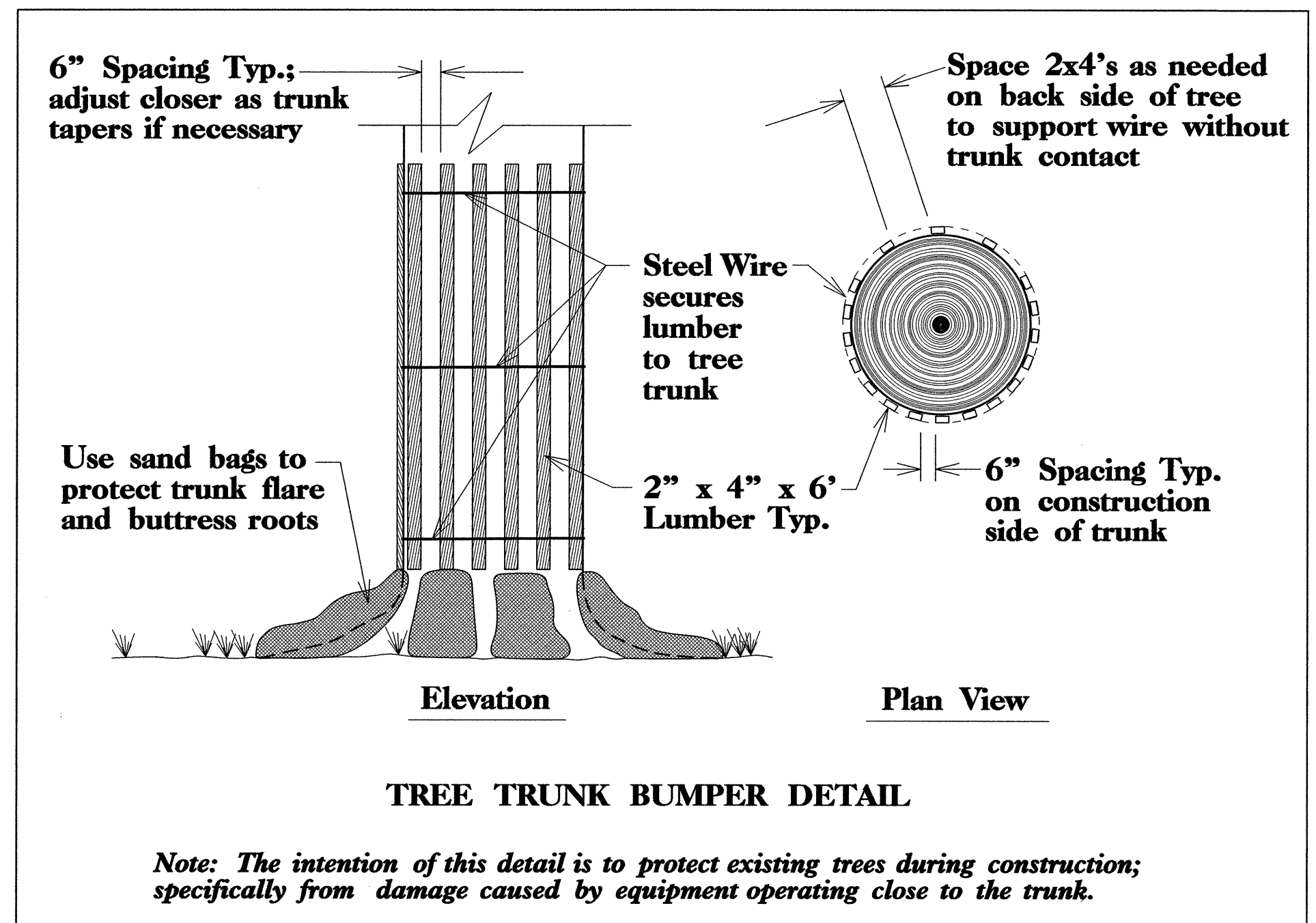
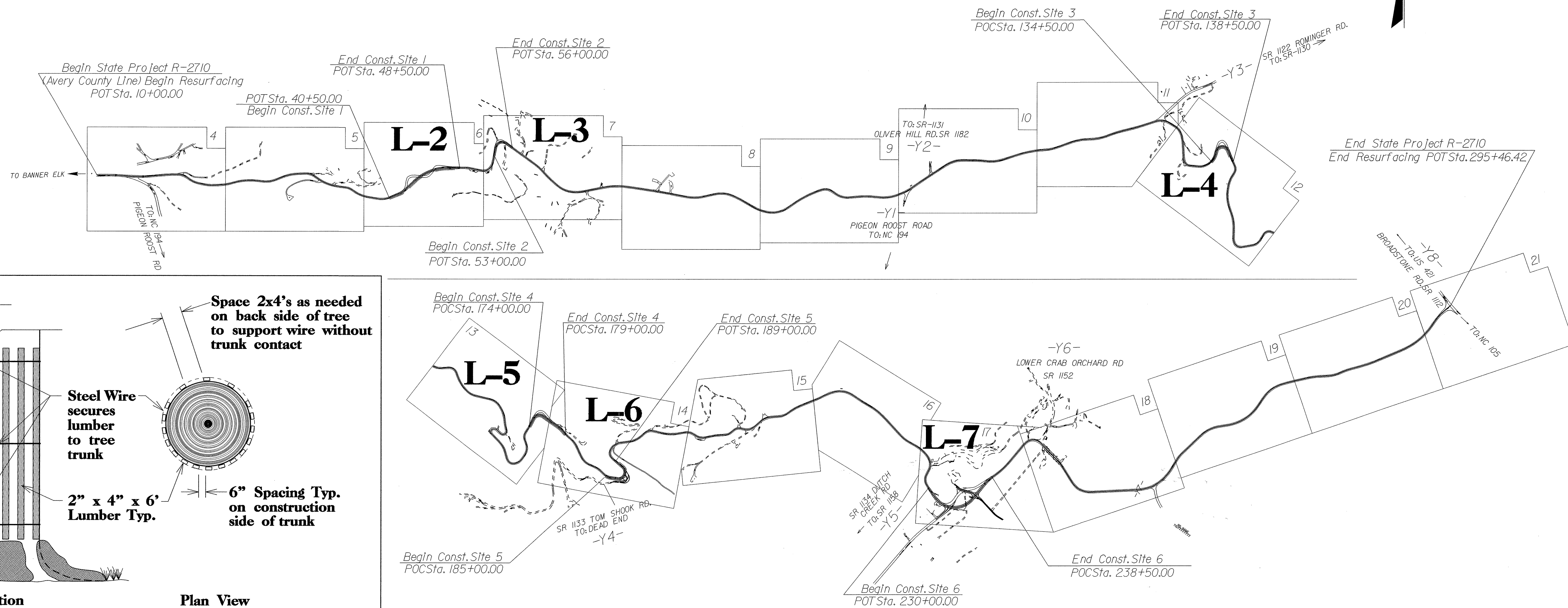
STATE NC	T.I.P. # R-2710	SHEET # L-1 of L-7
WBS #	F.A. Project #	Description
34499.1.1	STP - 194(4)	P.E.
34499.2.1	STP - 194(4)	R/W
34499.3.2	STP - 194(4)	CONST.

STATE OF NORTH CAROLINA
DIVISION OF HIGHWAYS

WATAUGA COUNTY

Location: NC 194 from the Avery/Watauga County Line to Broadstone Road (SR1112)

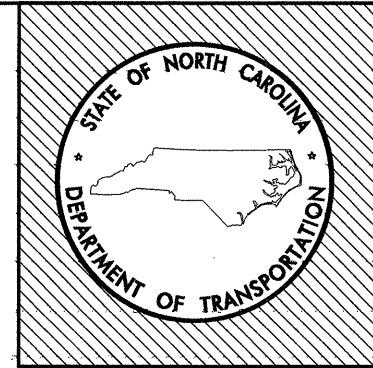
Type of Work: Tree Preservation on Realignment/Resurfacing Project



NC DOT - ROADSIDE ENVIRONMENTAL UNIT
LANDSCAPE DESIGN & DEVELOPMENT
1557 MAIL SERVICE CENTER RALEIGH NC 27699-1557
PH: 919-733-2920 FAX: 919-733-9810
HTTP://WWW.NC DOT.ORG/DOH/OPERATIONS/DP_GH1EF_ENG/ROADSIDE/

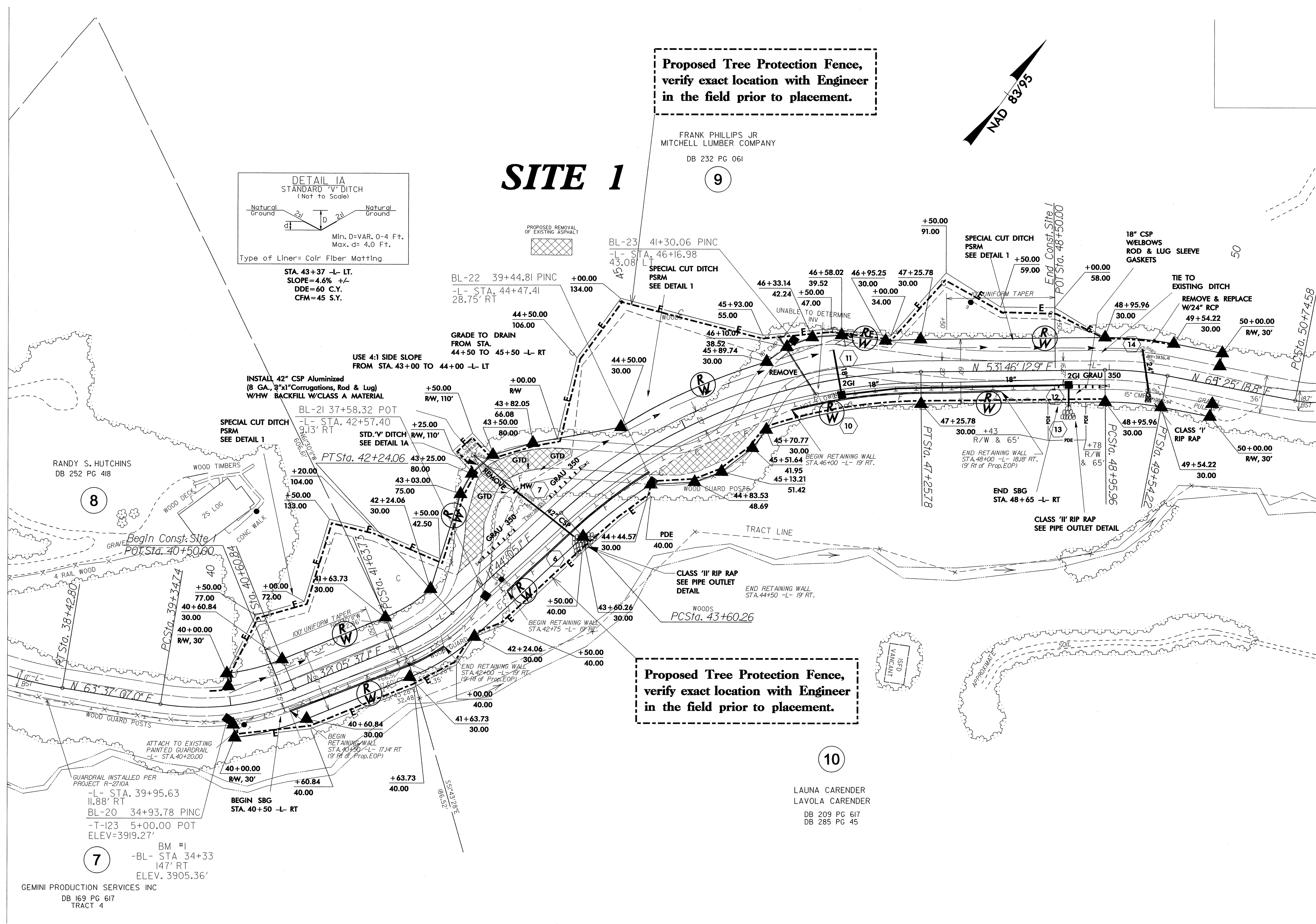
NC 194 - Watauga County
Tree Preservation

REU ENGINEER:
CONNIE MORGAN



TIP #: R - 2710
FEDERAL I.D.: STP - 194(4)
FINAL DESIGN DATE: June 21, 2010

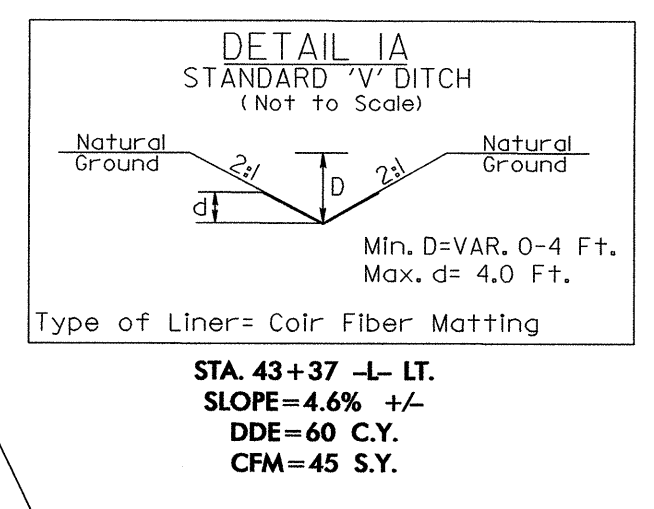
SHEET DESCRIPTION	NC 194 Tree Preservation	Revised Date
	Title Sheet and Tree Bumper Detail	Letting Date
		Sept. 21, 2010
		Sheet # L-1 of L-7
		Total Sheets



SITE 1

Proposed Tree Protection Fence,
verify exact location with Engineer
in the field prior to placement.

FRANK PHILLIPS JR
MITCHELL LUMBER COMPANY
DB 232 PG 061



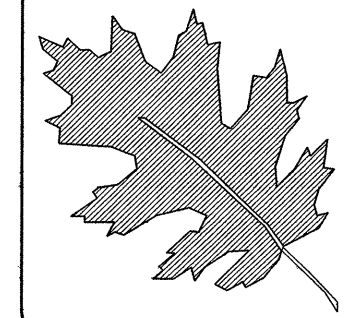
Proposed Tree Protection Fence,
verify exact location with Engineer
in the field prior to placement.

MATCH LINE SHEET L - 4

RANDY S. HUTCHINS
DB 252 PG 418

LAUNA CARENDER
LAVOLA CARENDER
DB 209 PG 617
DB 285 PG 45

GEMINI PRODUCTION SERVICES INC
DB 169 PG 617
TRACT 4



NC DOT - ROADSIDE ENVIRONMENTAL UNIT
LANDSCAPE DESIGN & DEVELOPMENT
1557 MAIL SERVICE CENTER RALEIGH NC 27699-1557
PH: 919-733-2920 FAX: 919-733-9810
HTTP://WWW.NCDOT.ORG/DOH/OPERATIONS/DP_CHIEF_ENG/ROADS106/

NC 194 Watauga County Tree Preservation

REV ENGINEER:
CONNIE MORGAN



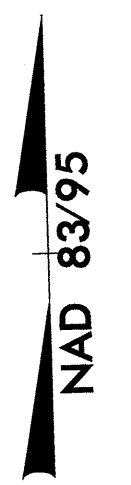
TIP #:	R - 2710
FEDERAL I.D.:	STP - 194(4)
FINAL DESIGN DATE:	June 21, 2010

SHEET DESCRIPTION	NC 194 Tree Preservation
	Plan Sheet (Site 1)

SHEET NO.:
L-2 of L-7
TOTAL SHEETS:

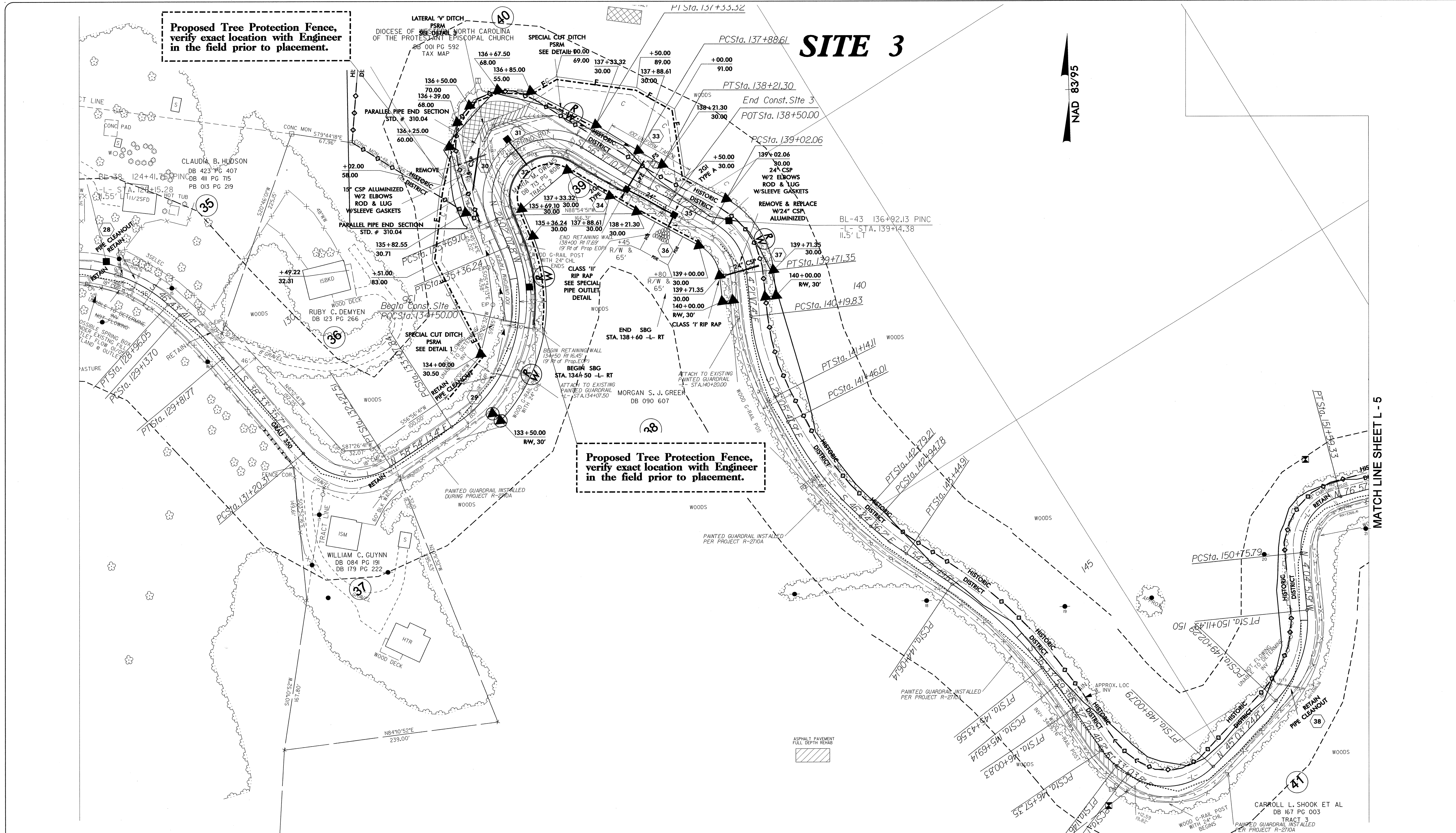
Proposed Tree Protection Fence, verify exact location with Engineer in the field prior to placement.

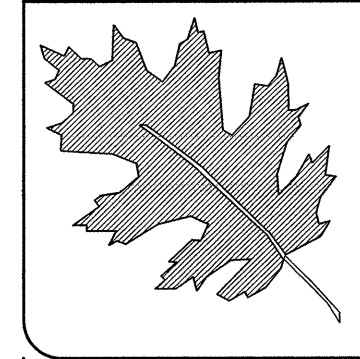
SITE 3



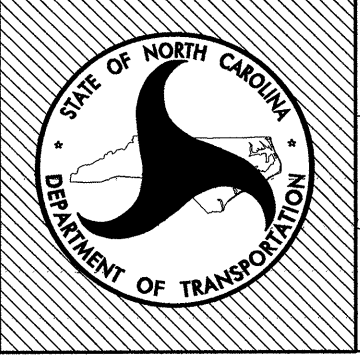
Proposed Tree Protection Fence, verify exact location with Engineer in the field prior to placement.

MATCH LINE SHEET L - 5




 NCDOT - ROADSIDE ENVIRONMENTAL UNIT
 LANDSCAPE DESIGN & DEVELOPMENT
 1557 MAIL SERVICE CENTER RALEIGH NC 27699-1557
 PH: 919-733-2920 FAX: 919-733-9810
[HTTP://WWW.NCDOT.ORG/00H/OPERATIONS/DP_CHIEF_ENG/ROADSIDE/](http://www.ncdot.org/00h/operations/DP_CHIEF_ENG/ROADSIDE/)

NC 194 Watauga County
Tree Preservation
 REU ENGINEER:

TIP #: **R - 2710**
 FEDERAL I.D.: **STP - 194(4)**
 FINAL DESIGN DATE: **June 21, 2010**

NC 194 Tree Preservation
Plan Sheet
Site 3

SHEET NO.:
L-4 of L-7
 TOTAL SHEETS:

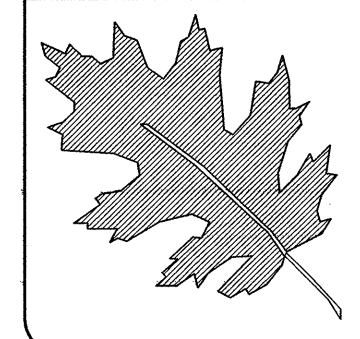
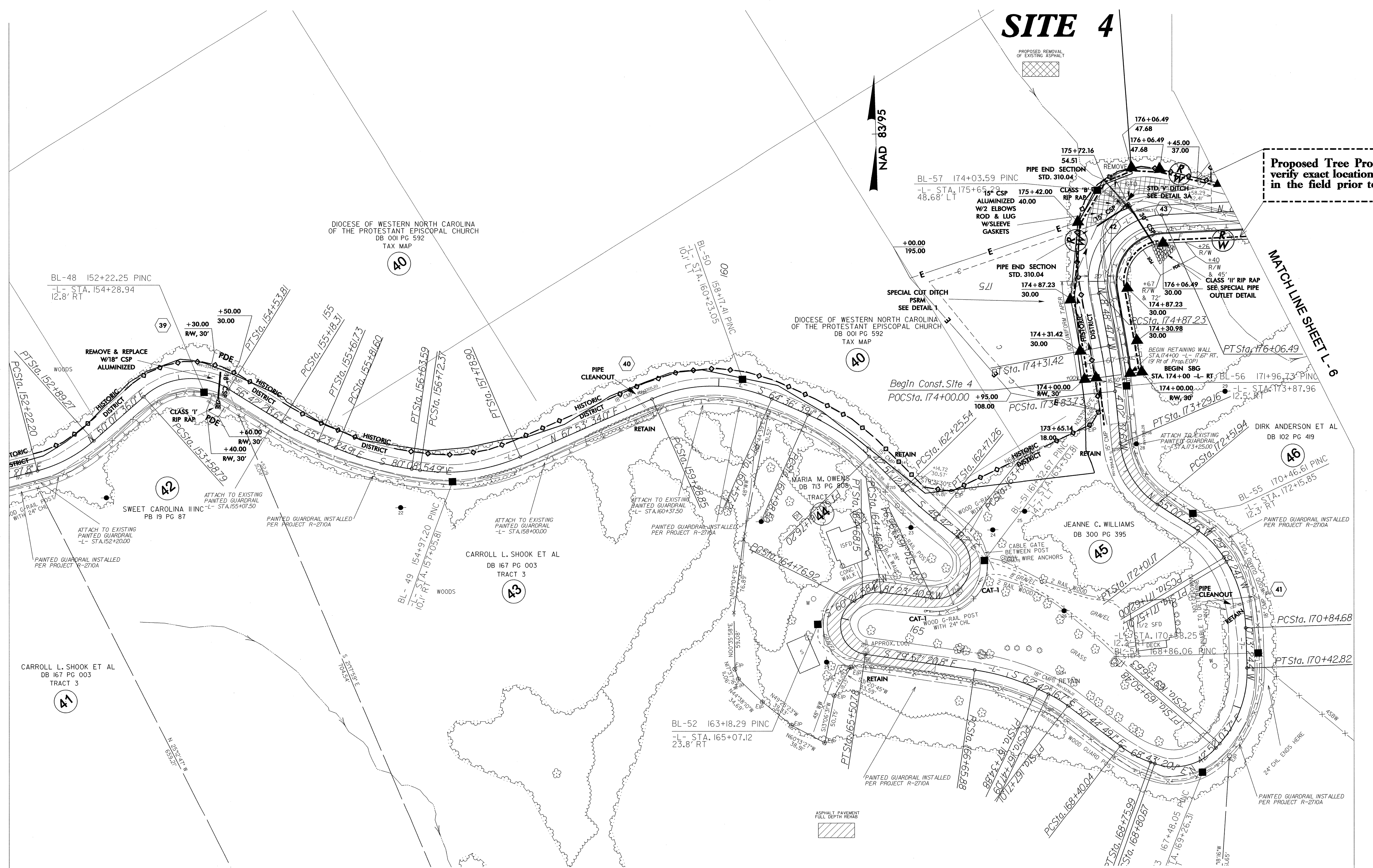
SITE 4

NAD 83/95

Proposed Tree Protection Fence, verify exact location with Engineer in the field prior to placement.


MATCH LINE SHEET L-4

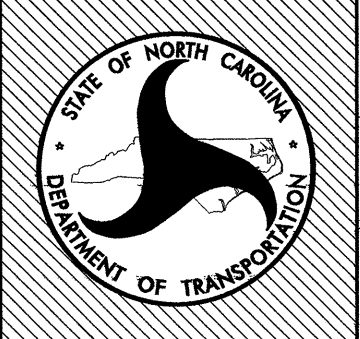
MATCH LINE SHEET L-6



NC DOT - ROADSIDE ENVIRONMENTAL UNIT
 LANDSCAPE DESIGN & DEVELOPMENT
 1557 MAIL SERVICE CENTER RALEIGH NC 27699-1557
 PH: 919-733-2920 FAX: 919-733-9810
 HTTP://WWW.NC DOT.ORG/DOH/OPERATIONS/OP_CHIEF_ENG/ROADSIDE/

NC 194 Watauga County Tree Preservation

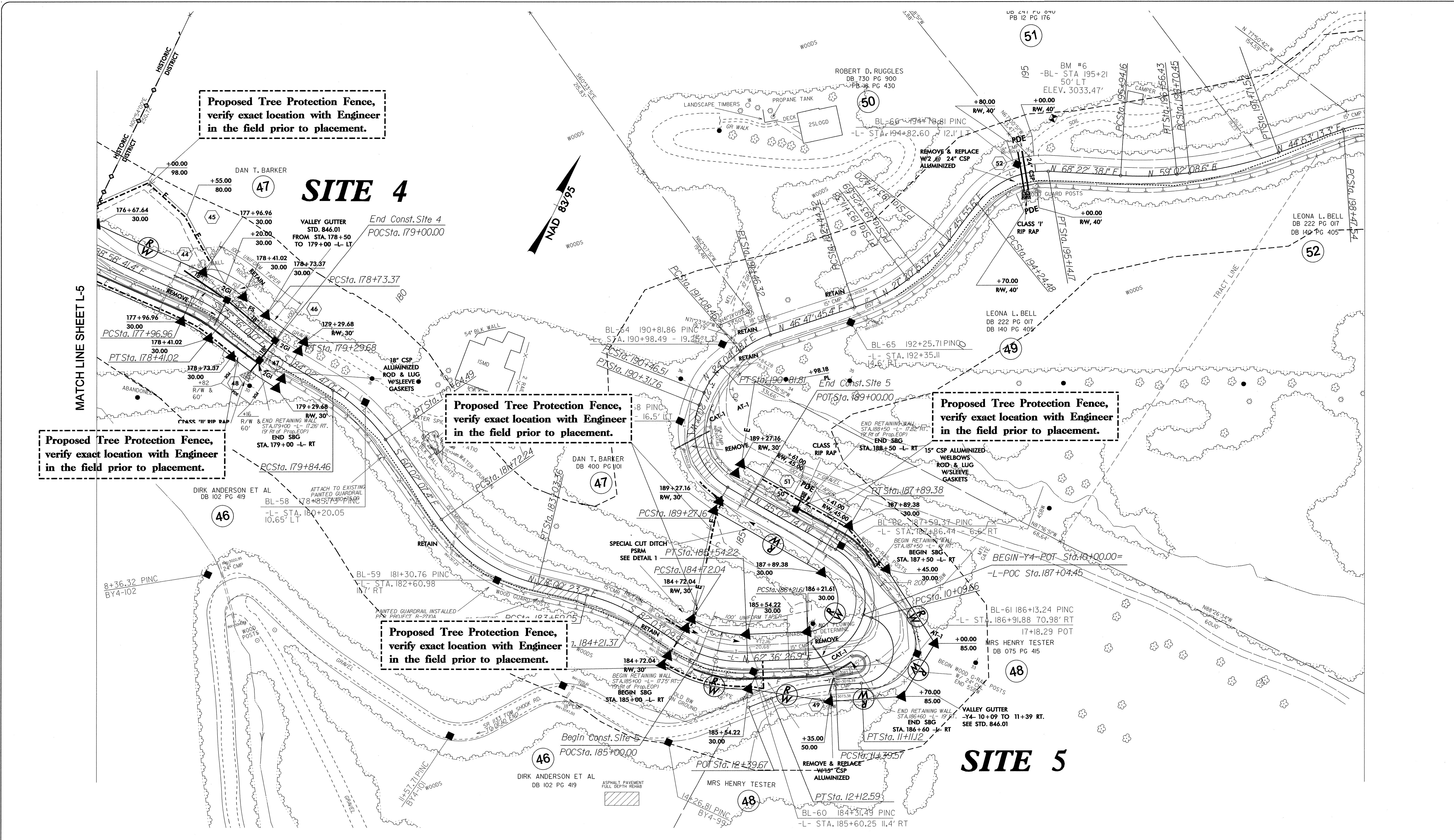
REU ENGINEER:

 CONNIE MORGAN

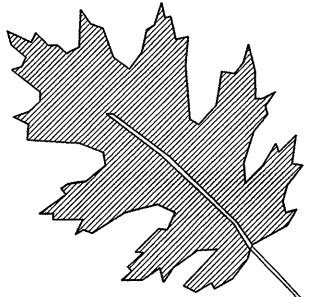


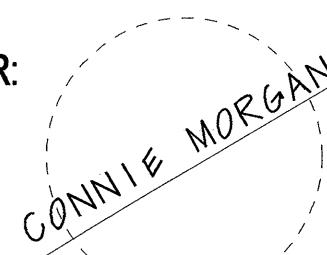

TIP #:	R - 2710
FEDERAL I.D.:	STP - 194(4)
FINAL DESIGN DATE:	June 21, 2010

SHEET DESCRIPTION	NC 194 Tree Preservation
	Plan Sheet
	Site 4

SHEET NO.:	L-5 of L-7
TOTAL SHEETS:	



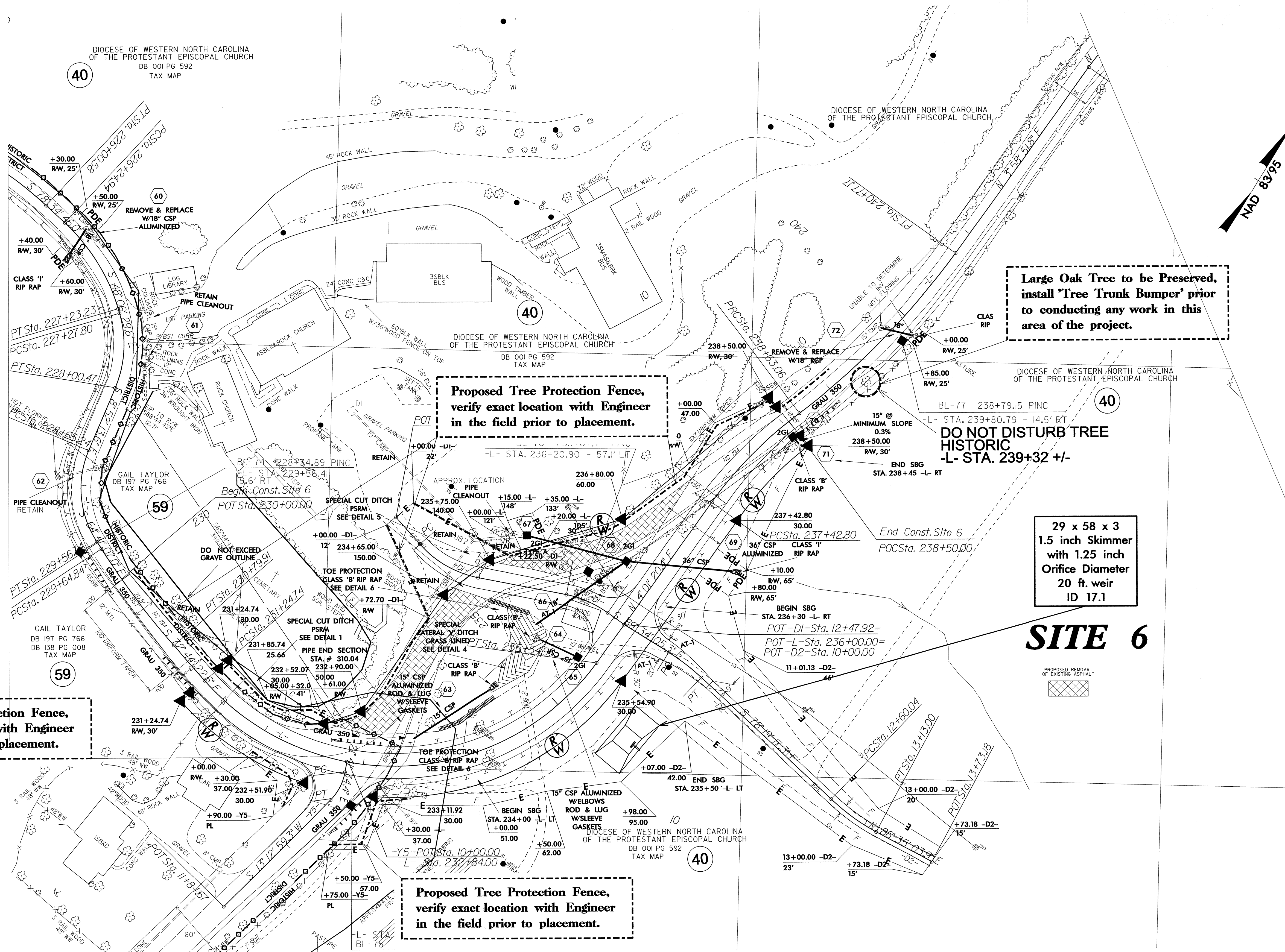

 NCDOT - ROADSIDE ENVIRONMENTAL UNIT
 LANDSCAPE DESIGN & DEVELOPMENT
 1557 MAIL SERVICE CENTER RALEIGH NC 27699-1557
 PH: 919-733-2920 FAX: 919-733-9810
[HTTP://WWW.NCDOT.ORG/00H/OPERATIONS/OP_CHIEF_ENG/ROADSIDE/](http://www.ncdot.org/00H/OPERATIONS/OP_CHIEF_ENG/ROADSIDE/)

NC 194 Watauga County Tree Preservation
 REU ENGINEER:



TIP #: **R - 2710**
 FEDERAL I.D.: **STP - 194(4)**
 FINAL DESIGN DATE: **June 21, 2010**

SHEET DESCRIPTION
NC 194 Tree Preservation
Plan Sheet Site 4 & 5

SHEET NO.:
L-6 of L-7
 TOTAL SHEETS:



Proposed Tree Protection Fence, verify exact location with Engineer in the field prior to placement.

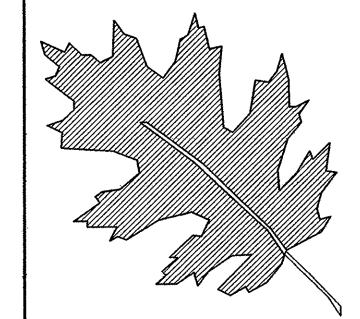
Large Oak Tree to be Preserved, install 'Tree Trunk Bumper' prior to conducting any work in this area of the project.

Proposed Tree Protection Fence, verify exact location with Engineer in the field prior to placement.

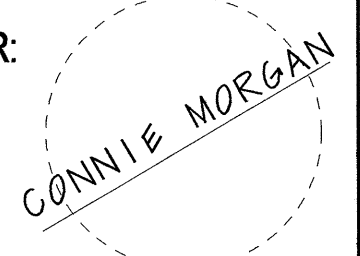
Proposed Tree Protection Fence, verify exact location with Engineer in the field prior to placement.

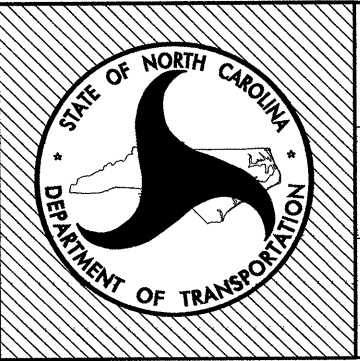
29 x 58 x 3
1.5 inch Skimmer
with 1.25 inch
Orifice Diameter
20 ft. weir
ID 17.1

SITE 6


 NCDOT - ROADSIDE ENVIRONMENTAL UNIT
 LANDSCAPE DESIGN & DEVELOPMENT
 1557 MAIL SERVICE CENTER RALEIGH NC 27699-1557
 PH: 919-733-2920 FAX: 919-733-9810
[HTTP://WWW.NCDOT.ORG/DOH/OPERATIONS/OP_CHIEF_ENG/ROADSIDE/](http://www.ncdot.org/DOH/OPERATIONS/OP_CHIEF_ENG/ROADSIDE/)

NC 194 Watauga County Tree Preservation

REU ENGINEER:




TIP #:	R - 2710
FEDERAL I.D.:	STP - 194(4)
FINAL DESIGN DATE:	June 21, 2010

SHEET DESCRIPTION	NC 194 Tree Preservation
	Plan Sheet Site 6

SHEET NO.:	L-7 of L-7
TOTAL SHEETS:	