

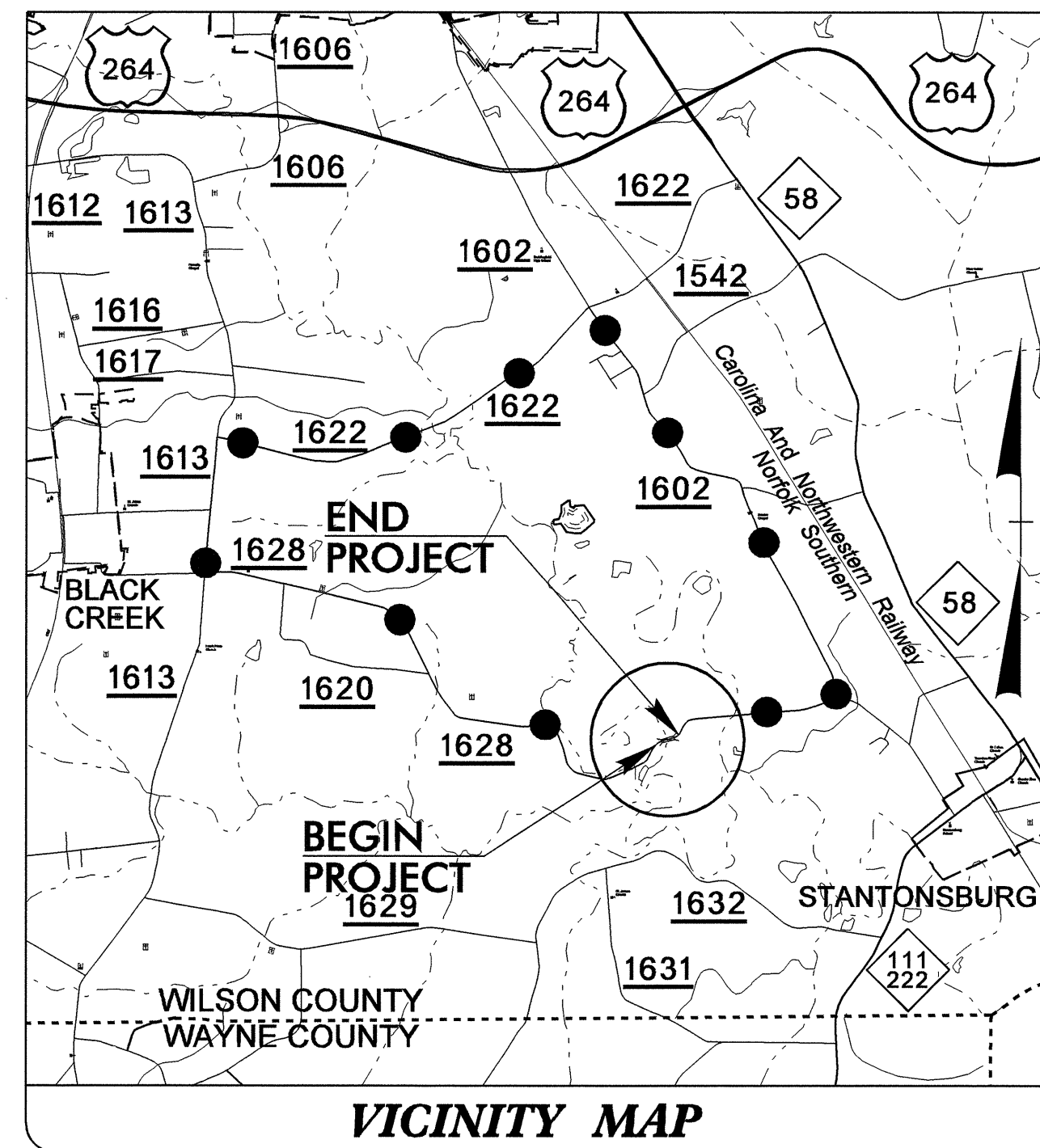
T.I.P. NO.	SHEET NO.
B-4992	UO-1

STATE OF NORTH CAROLINA
DIVISION OF HIGHWAYS

**UTILITIES BY OTHERS PLANS
WILSON COUNTY**

**LOCATION: BRIDGE NO.1 ON SR 1628 (WOODBIDGE ROAD)
OVER THE OVERFLOW CHANNEL OF CONTENTNEA**

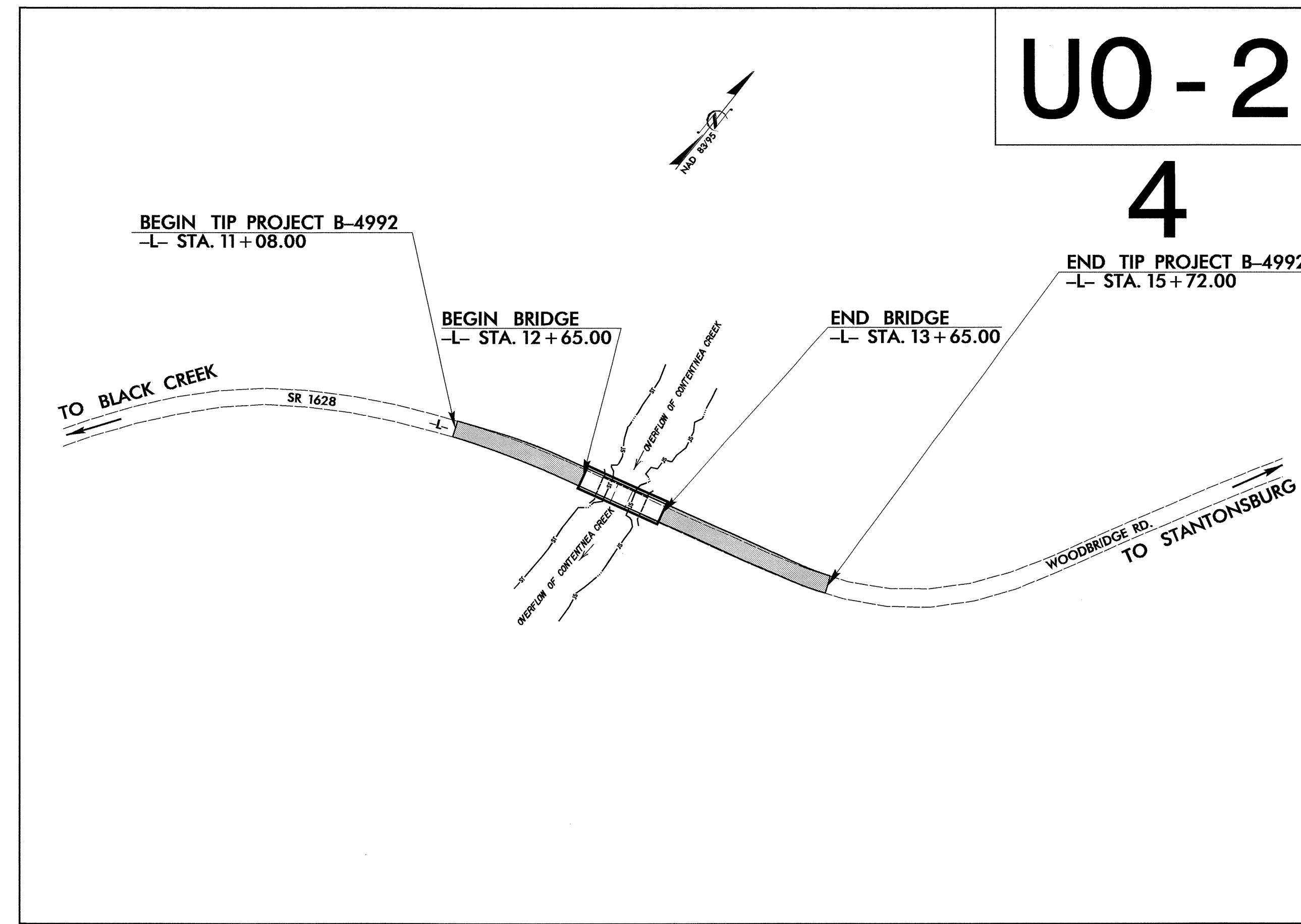
TYPE OF WORK: UTILITIES



VICINITY MAP

● — ● — ● — OFF-SITE DETOUR ROUTE

UO-2
4



TIP B-4992

INDEX OF SHEETS	
SHEET NO.	DESCRIPTION
UO-1	TITLE SHEET
UO-2	UTILITIES BY OTHERS PLAN SHEET

UTILITY OWNERS ON PROJECT
(1) TOWN OF STANTONSBURG (POWER)
(2) EMBARQ (TELEPHONE)

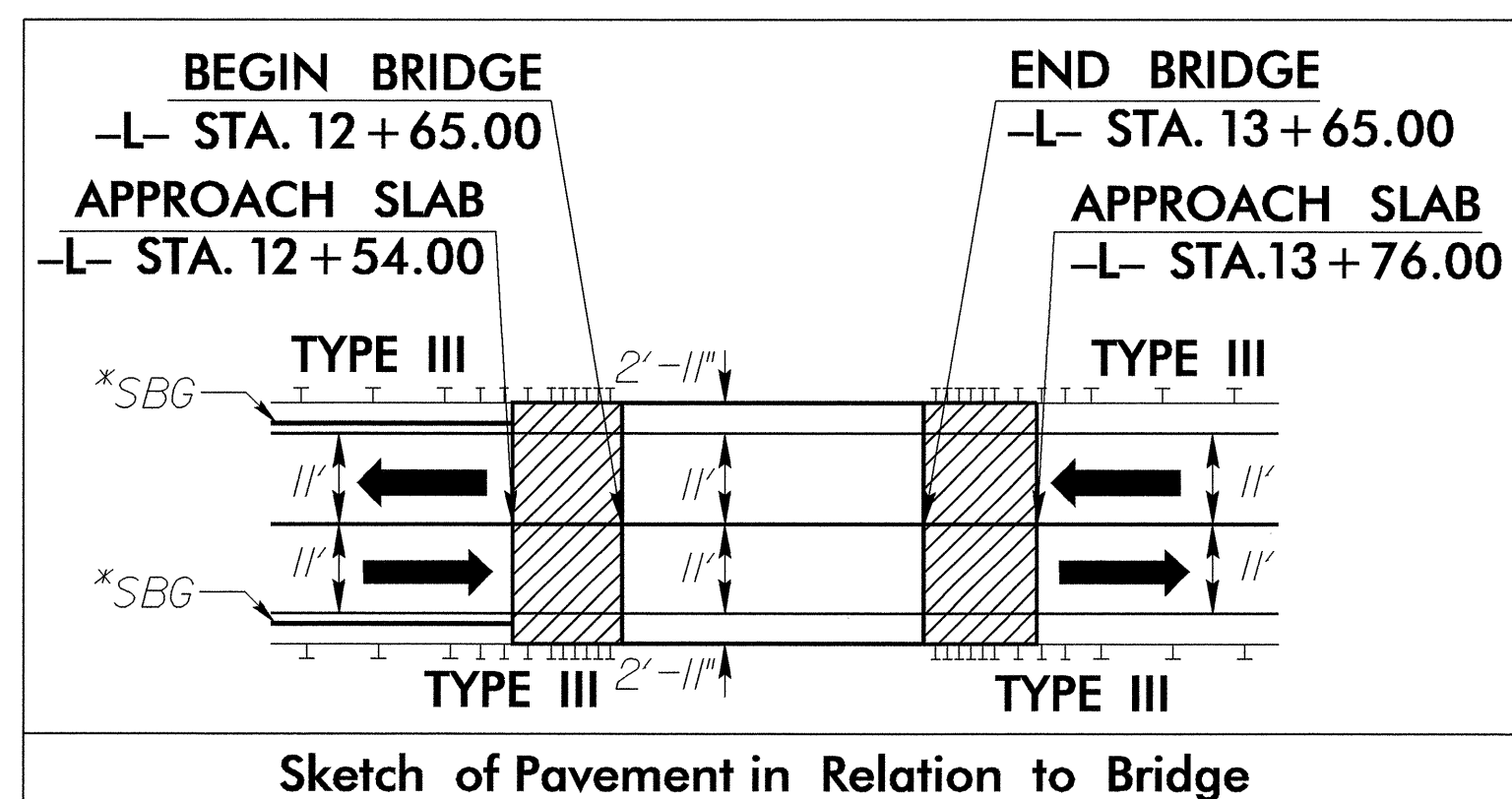
PREPARED IN THE OFFICE OF:
**DIVISION OF HIGHWAYS
UTILITIES ENGINEERING
SECTION**

1591 MAIL SERVICES CENTER
RALEIGH NC 27699-1591
PHONE (919) 250-4128
FAX (919) 250-4119

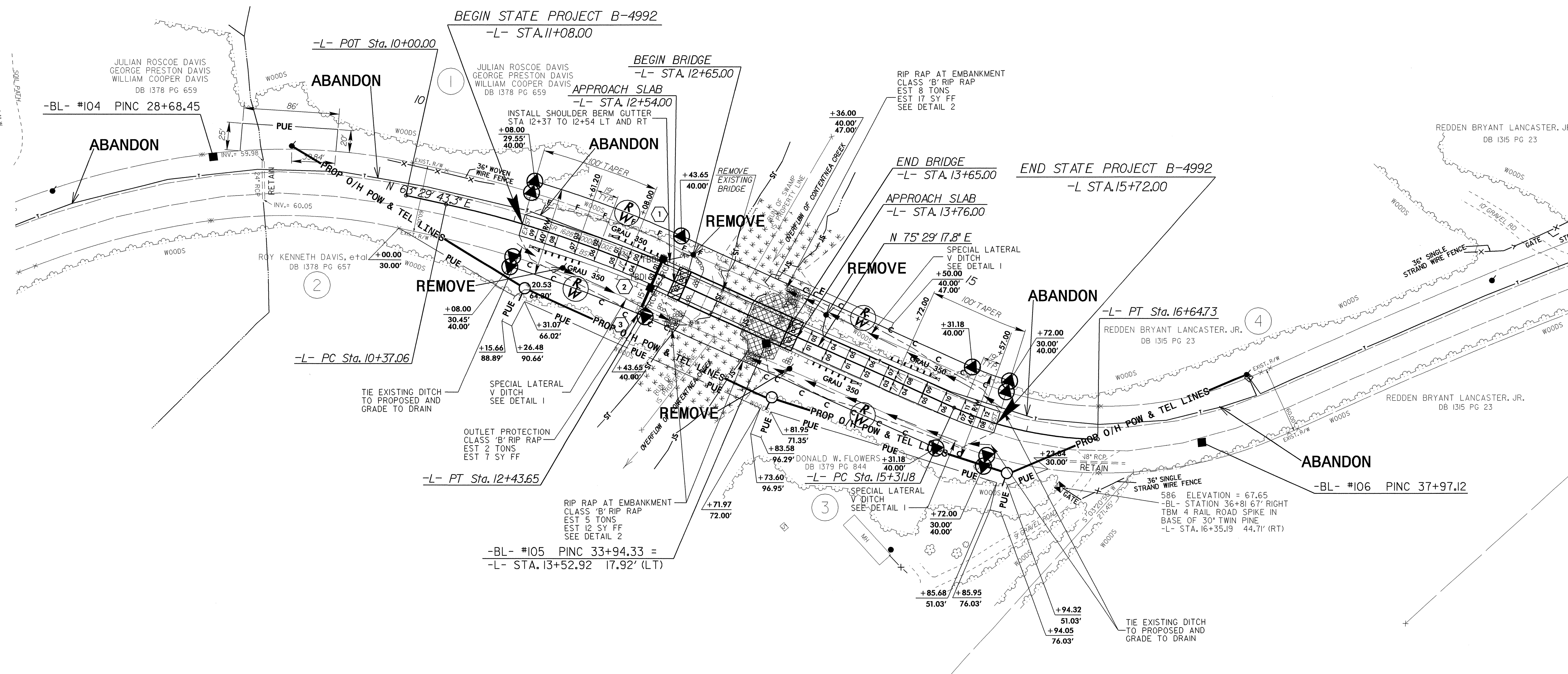
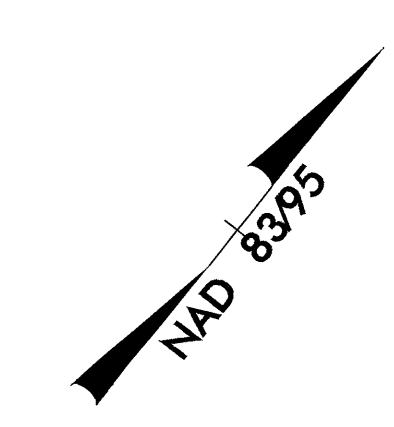
<u>Roger Worthington, P.E.</u>	UTILITIES SECTION ENGINEER
<u>Steve McKee, P.E.</u>	UTILITIES SQUAD LEADER PROJECT ENGINEER
<u>Alonza Yancey</u>	UTILITIES PROJECT DESIGNER

UTILITIES BY OTHERS

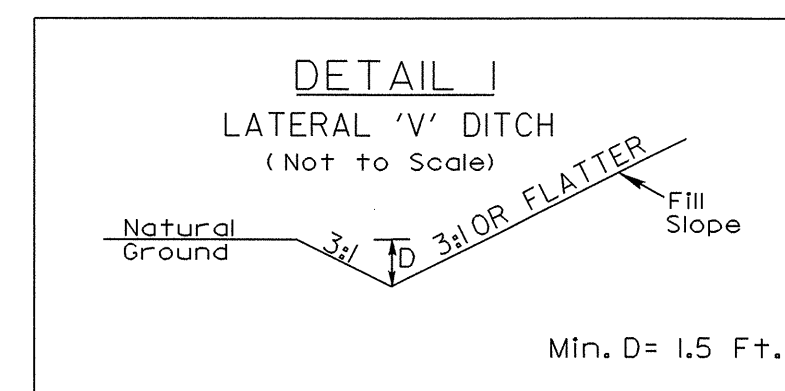
NOTE:
ALL PROPOSED UTILITY WORK
SHOWN ON THIS SHEET WILL
BE DONE BY OTHERS



*SBG DENOTES "SHOULDER BERM GUTTER"



-L-	
PI Sta 11+40.73	PI Sta 15+98.90
$\Delta = 11^{\circ} 59' 34.5''$ (RT)	$\Delta = 23^{\circ} 28' 13.5''$ (LT)
$D = 5^{\circ} 48' 18.2''$	$D = 17^{\circ} 34' 26.3''$
$L = 206.59'$	$L = 133.55'$
$T = 103.68'$	$T = 67.73'$
$R = 987.00'$	$R = 326.03'$
SE = SEE PLANS	SE = SEE PLANS
RO = SEE PLANS	RO = SEE PLANS



-L- STA 11+08 TO STA 12+70 (RT)
-L- STA 13+45 TO STA 15+72 (RT)
-L- STA 13+45 TO STA 15+72 (LT)

NOTE: SEE SHEET NO. 5 FOR -L- PROFILE
SEE SHEET S-1 THRU S- FOR STRUCTURE PLANS
TRAFFIC IS TO BE MAINTAINED WITH AN OFF SITE DETOUR

REVISIONS

5/14/99

15-SEP-2009 07:27
\\s:\projects\104992\util.uo2.psh.dgn