

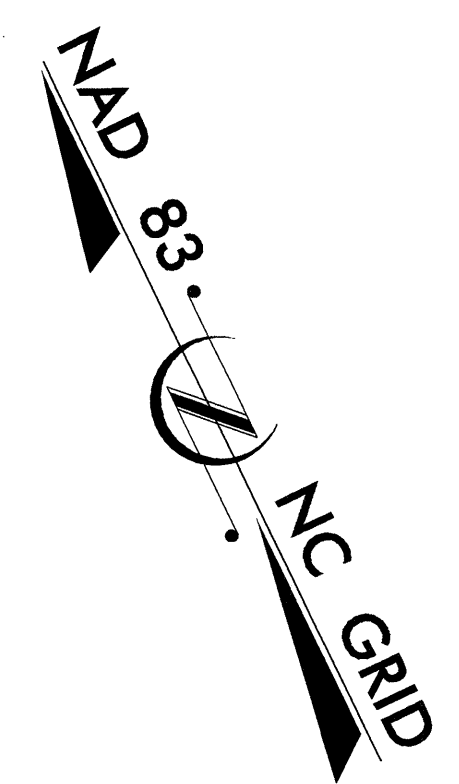
T.I.P. NO.	SHEET NO.
B-4190	UO-1

STATE OF NORTH CAROLINA
DIVISION OF HIGHWAYS

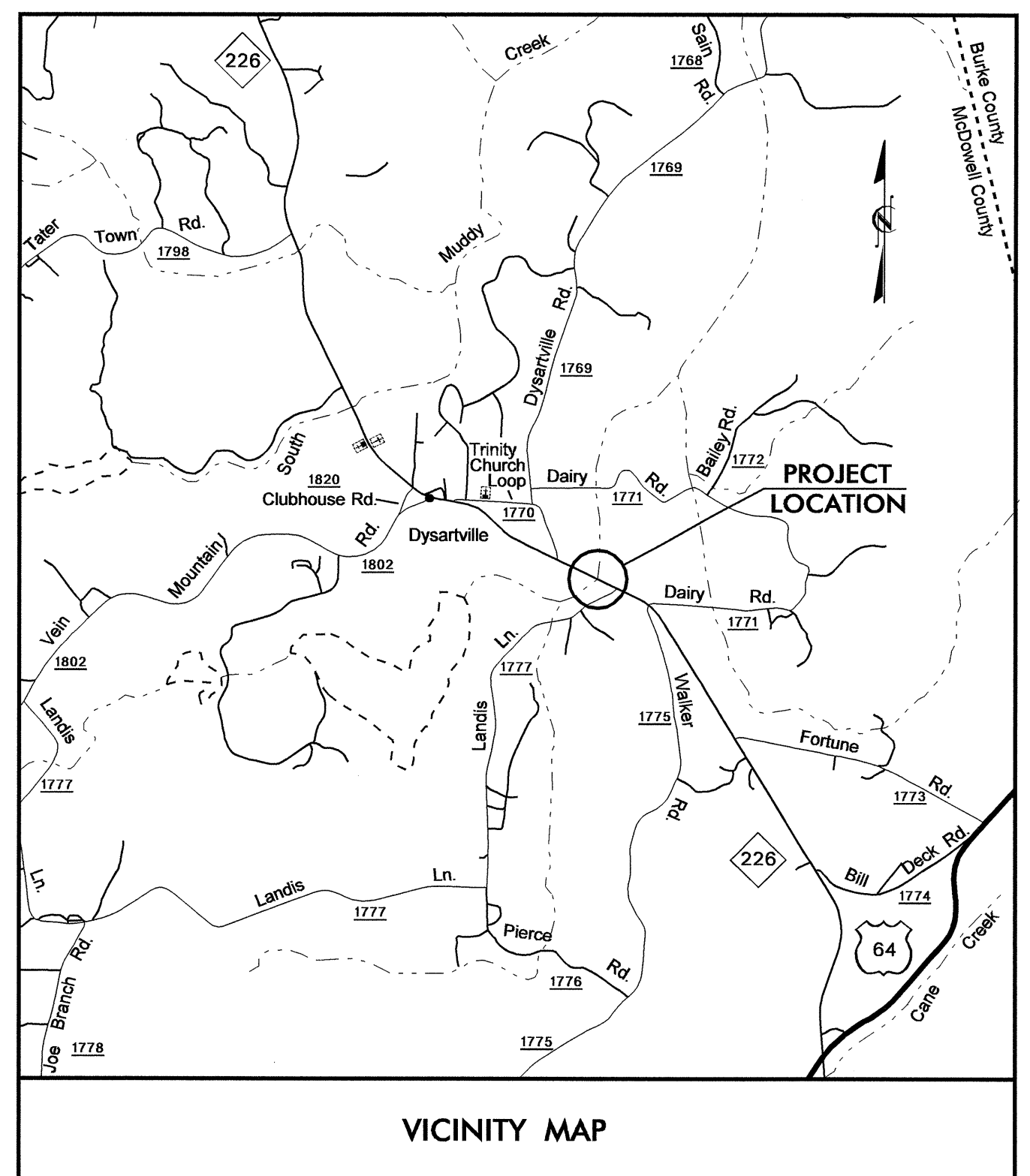
**UTILITIES BY OTHERS PLANS
MCDOWELL COUNTY**

**LOCATION: BRIDGE NO. 37 OVER HOPPER CREEK
ON NC 226**

TYPE OF WORK: UTILITIES RELOCATION

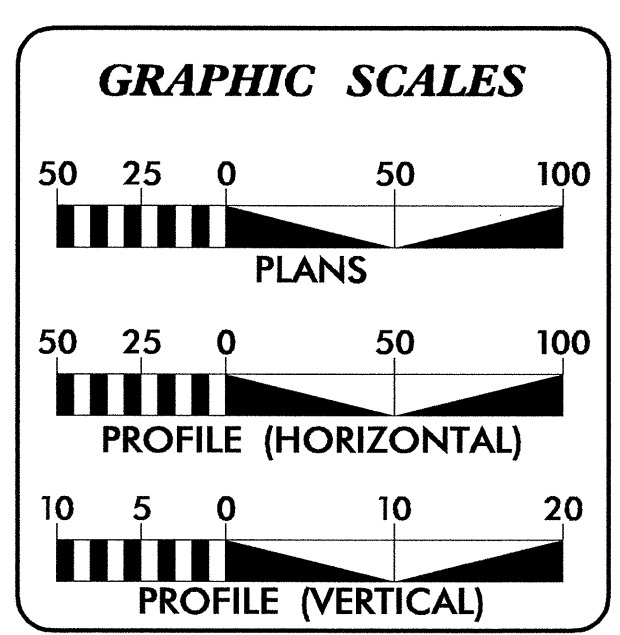
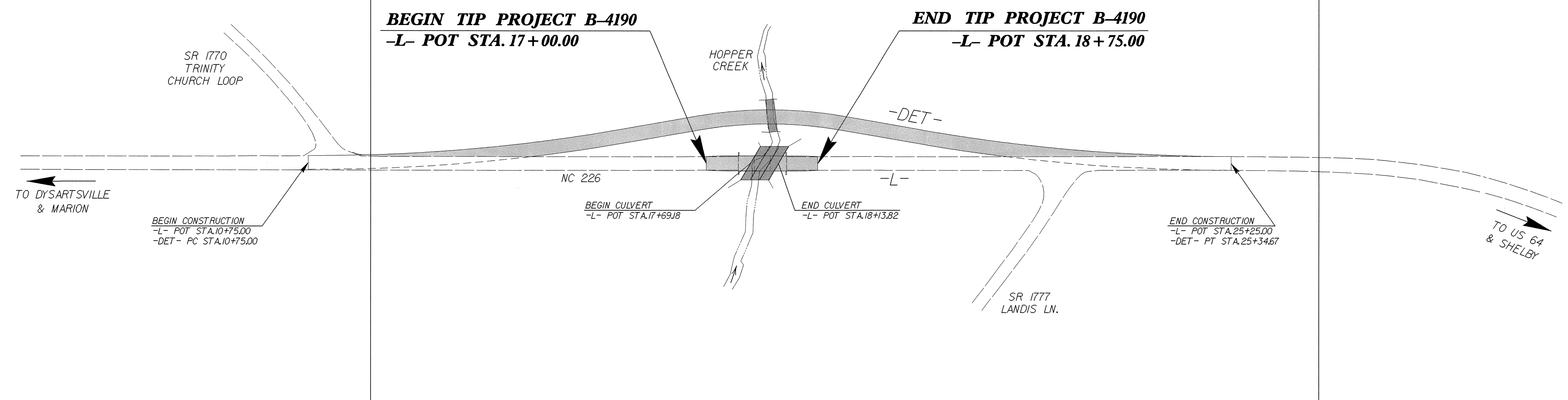


TIP PROJECT: B-4190



VICINITY MAP

UO-2



INDEX OF SHEETS	
SHEET NO.	DESCRIPTION
UO-1	TITLE SHEET
UO-2	PLAN SHEET

UTILITY OWNERS ON PROJECT
(1) RUTHERFORD EMC- POWER
(2) VERIZON - TELEPHONE

PREPARED IN THE OFFICE OF:
**DIVISION OF HIGHWAYS
UTILITIES ENGINEERING
SECTION**

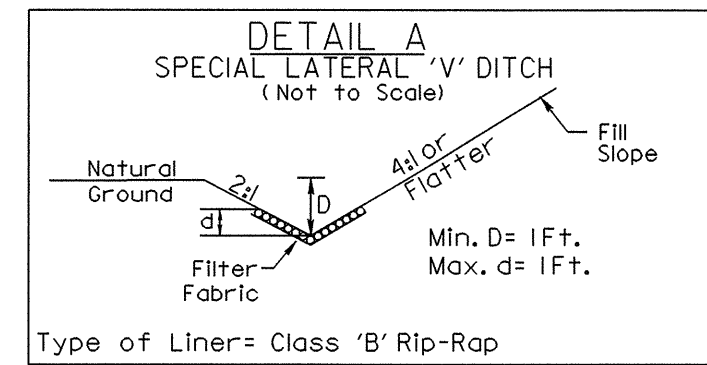
1591 MAIL SERVICES CENTER
RALEIGH NC 27699-1591
PHONE (919) 250-4128
FAX (919) 250-4119

Roger Worthington, P.E. UTILITIES SECTION ENGINEER
Carl Barclay, P.E. UTILITIES SQUAD LEADER PROJECT ENGINEER
Ali Kouchehi, PE UTILITIES PROJECT DESIGNER

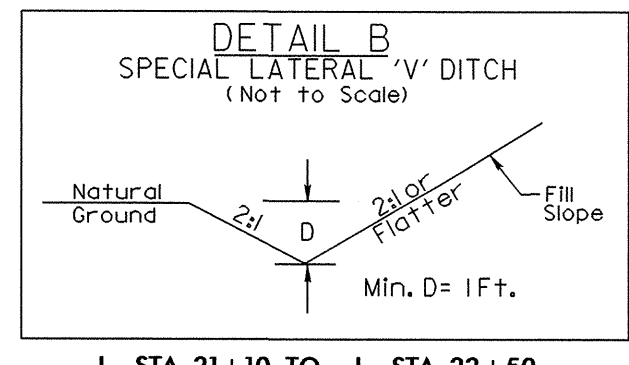
02-MAR-2010 15:07
R:\Utilities\rdy\ut\proj\b4190_rdy_tsh.dgn
\$\$\$\$\$USERNAME\$\$\$\$\$

UTILITIES BY OTHERS

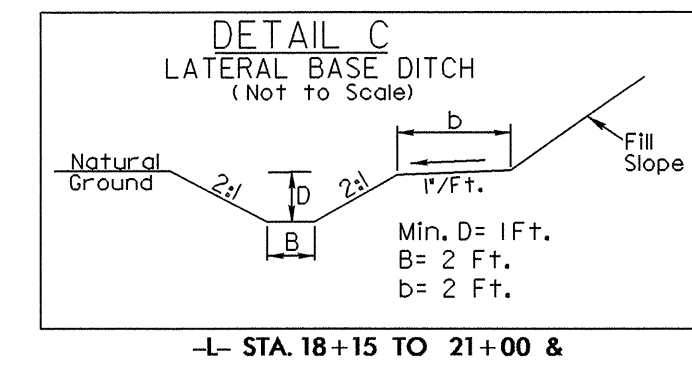
NOTE:
ALL PROPOSED UTILITY WORK SHOWN ON THIS SHEET WILL BE DONE BY OTHERS



Type of Liner = Class 'B' Rip-Rap
-L- STA. 16+50 TO -L- STA. 17+90
EST. CL 'B' RIP RAP = 38 TONS
EST. F.F. = 122 SY
(ALSO REMAINING FROM DETOUR IS
-L- STA. 22+50 TO -L- STA. 23+50)



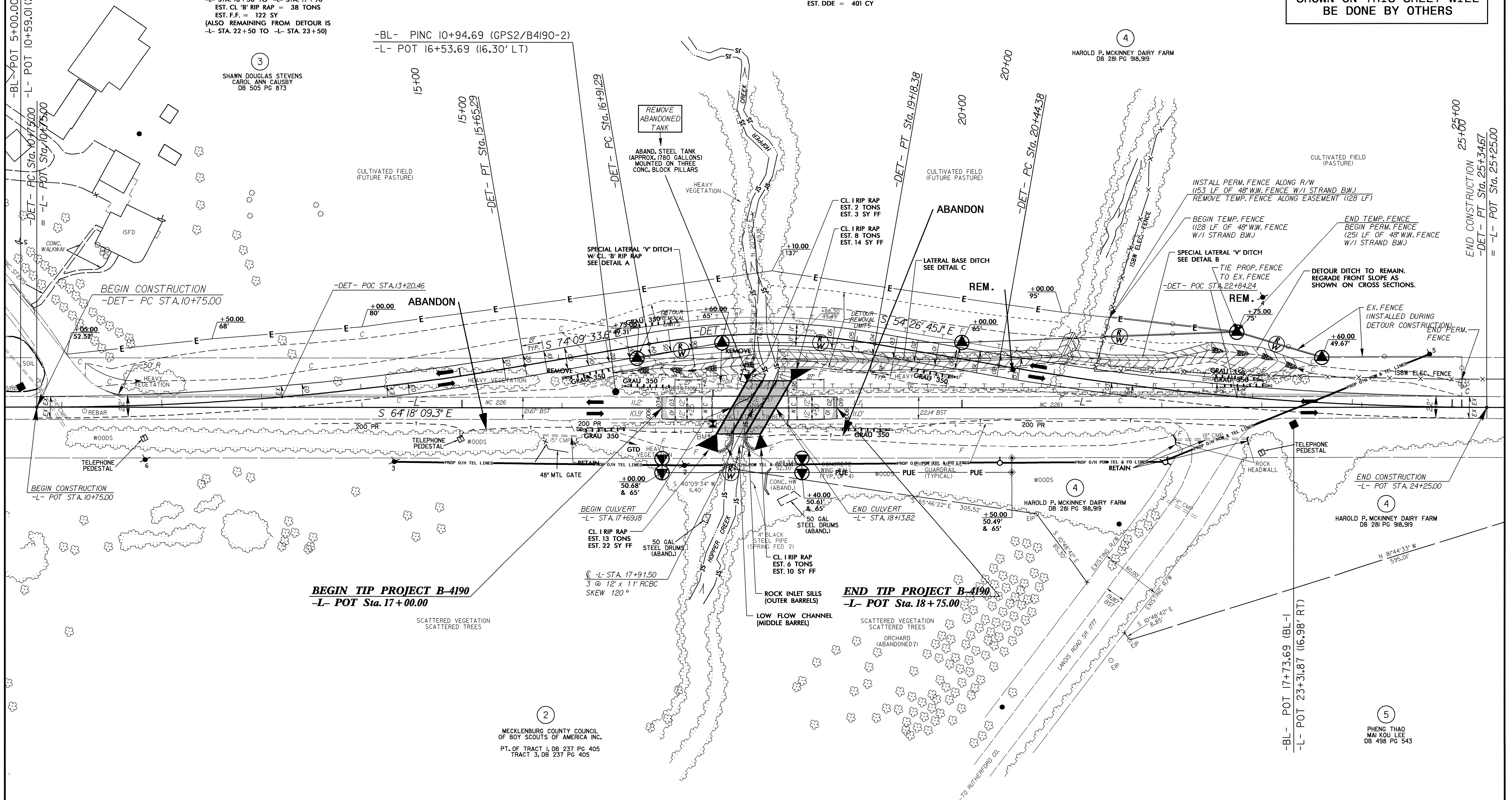
-L- STA. 21+10 TO -L- STA. 22+50



-L- STA. 18+15 TO 21+00 &
-L- STA. 21+00 (52' LT) TO 21+12 (75' LT)
EST. DDE = 401 CY

-BL- PINC 10+94.69 (GPS2/B4190-2)
-L- POT 16+53.69 (16.30' LT)

5/14/99
02-MAR-2010 15:28
R:\14111\141110\B-4190\ut_4_uo2_psh.dgn



5/14/99
02-MAR-2010 15:28
R:\14111\141110\B-4190\ut_4_uo2_psh.dgn