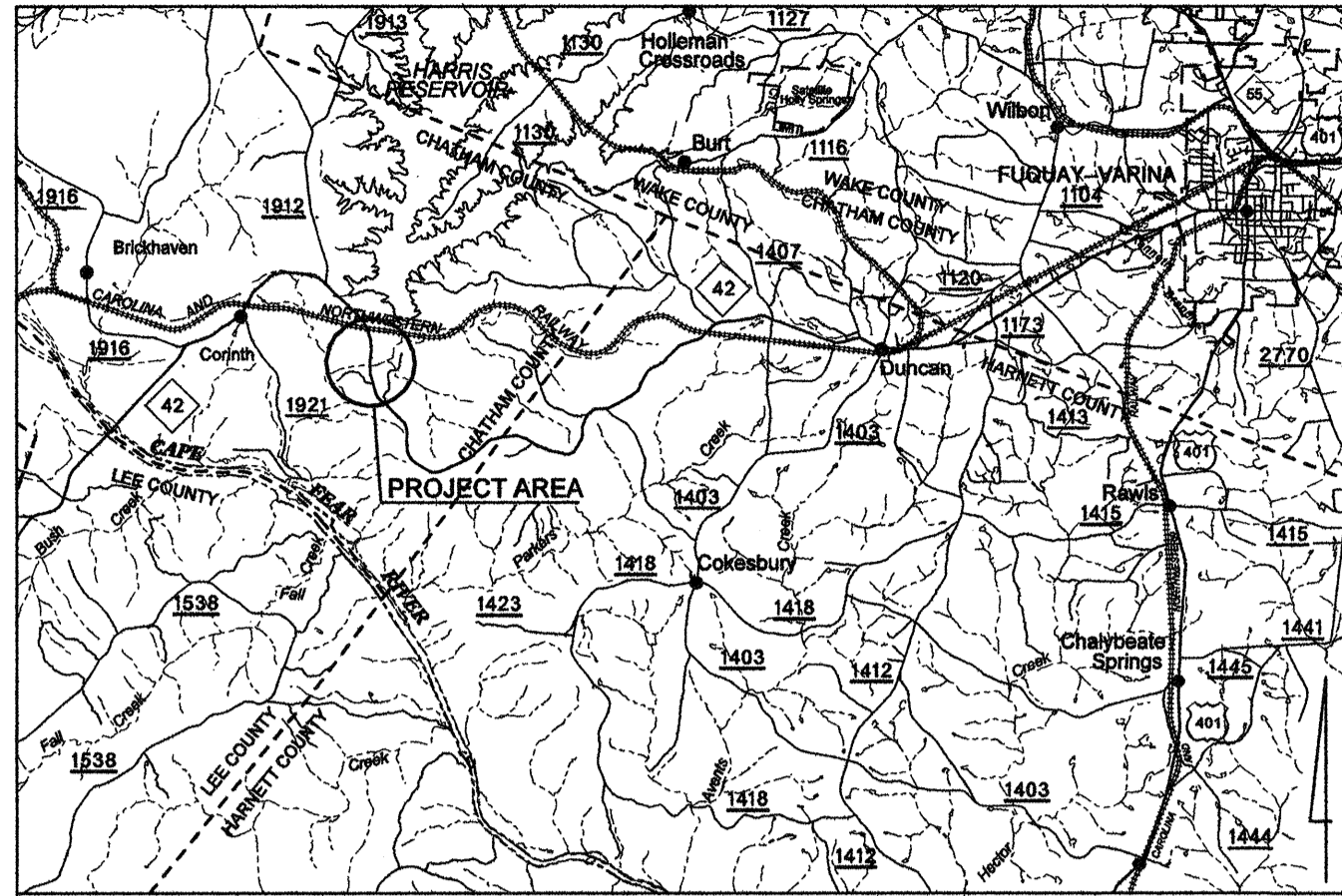


05/08/99

**CONTRACT: TIP PROJECT: B-4459**

**CONTRACT: TIP PROJECT: B-4459**

See Sheet 1-A For Index of Sheets



**VICINITY MAP**

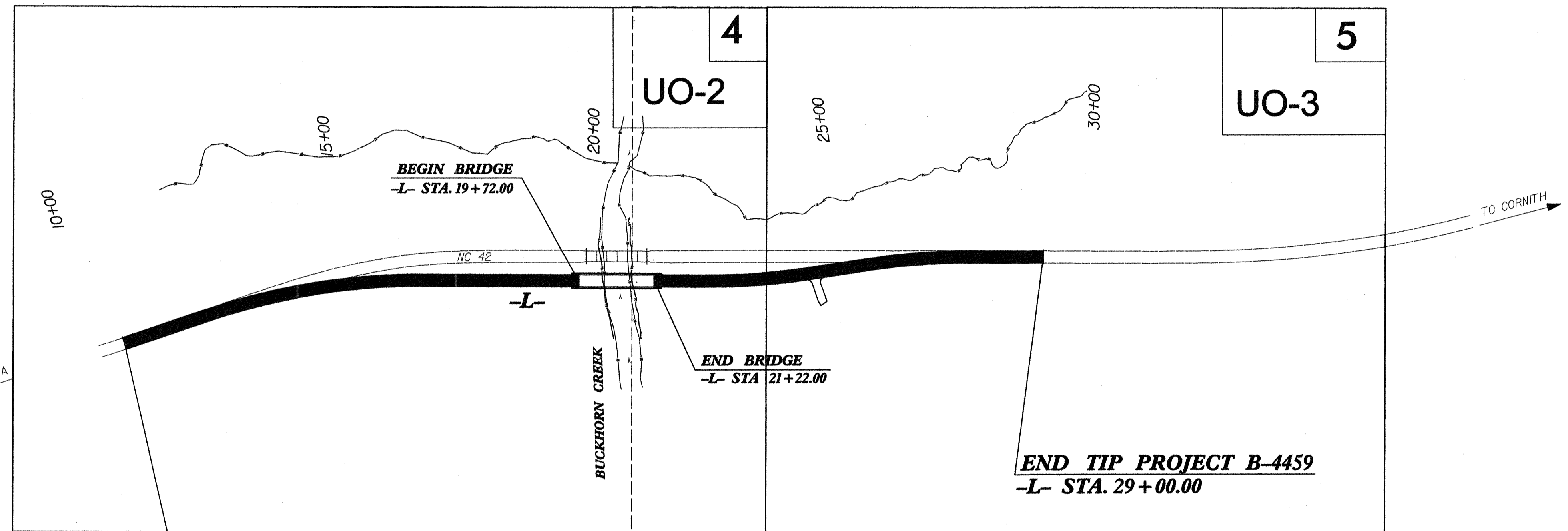
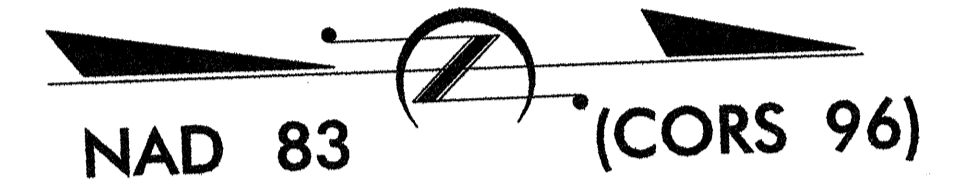
STATE OF NORTH CAROLINA  
DIVISION OF HIGHWAYS

**UTILITIES BY OTHERS  
CHATHAM COUNTY**

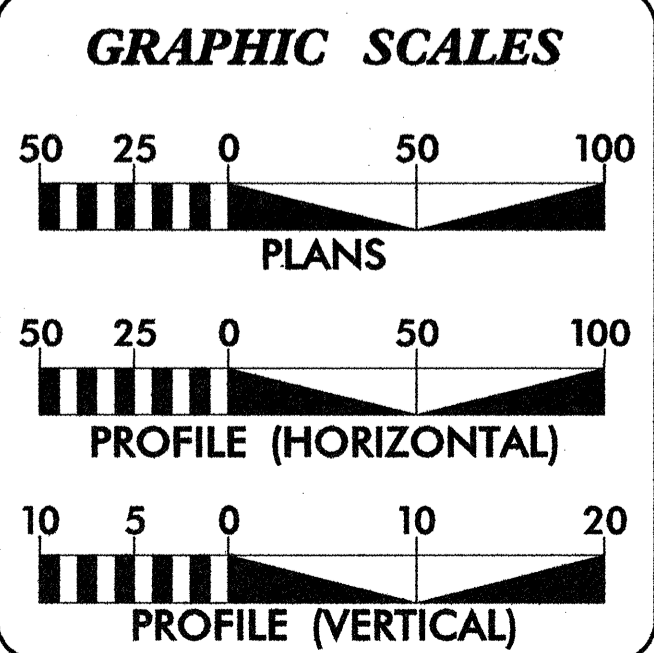
**LOCATION: BRIDGE NO. 56 ON NC 42 OVER BUCKHORN CREEK**

**TYPE OF WORK: UTILITIES RELOCATION**

STATE	STATE PROJECT REFERENCE NO.	SHEET NO.
NC	B-4459	UO-1
STATE PROJ. NO.	F.A. PROJ. NO.	DESCRIPTION
33710.1.1	BRSTP-0042(12)	PE
33710.2.1	BRSTP-0042(12)	R/W & UTILITIES



CLEARING ON THIS PROJECT SHALL BE PERFORMED TO THE LIMITS ESTABLISHED BY METHOD III.



**INDEX OF SHEETS**

SHEET NO.	DESCRIPTION
UO-1	TITLE SHEET
UO-2 TO UO-3	UTILITIES BY OTHERS PLAN SHEET

- UTILITY OWNERS ON PROJECT**
- CENTURYLINK (FIBER OPTIC TELEPHONE)
  - WINDSTREAM COMMUNICATIONS (TELEPHONE)
  - UNITED STATES GEOLOGICAL SURVEY (WATER GAUGING STATION)

Prepared by

UTILITY COORDINATOR DANNY PURYEAR

Raleigh, N.C. 27606  
Bus: 919 851 8077  
Fax: 919 851 8107  
License: F-0377

FOR:

**DIVISION OF HIGHWAYS  
UTILITIES and ENCROACHMENT  
ENGINEERING UNIT**

1591 MAIL SERVICES CENTER  
RALEIGH NC 27699-1591  
PHONE (919) 230-4128  
FAX (919) 230-4119

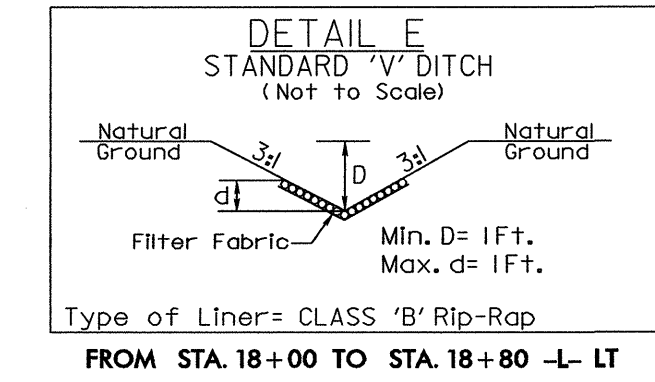
Roger Worthington, P.E. UTILITIES SECTION ENGINEER  
James S. McKee, P.E. UTILITIES SQUAD LEADER PROJECT ENGINEER  
Jamshid Hafshejani UTILITIES PROJECT DESIGNER

I:\46:50 AM  
P:\2010\B4459\Utilities\Proj\B4459\_uo\_1.tsh.dgn  
7/26/2010

NOTE:  
 ALL PROPOSED UTILITY WORK  
 SHOWN ON THIS SHEET WILL  
 BE DONE BY OTHERS

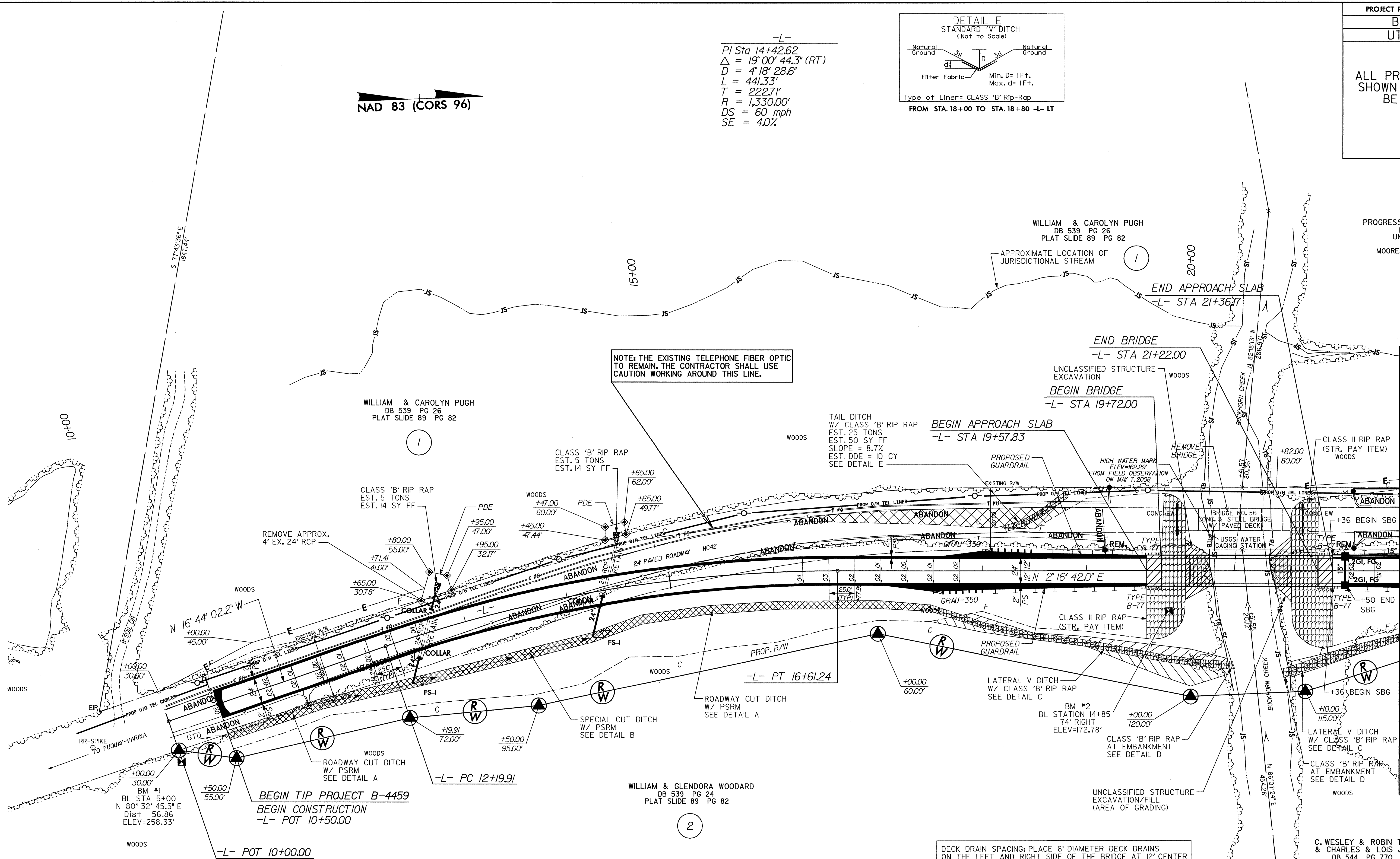
PROGRESS ENERGY CAROLINAS  
 DB 359 PG 426  
 UNRECORDED PLAT  
 L-D-3064  
 MOORE, GARNER, & ASSC. INC.

C. WESLEY & ROBIN TUTOR  
 & CHARLES & LOIS JONES  
 DB 544 PG 770  
 PLAT SLIDE 89 PG 82



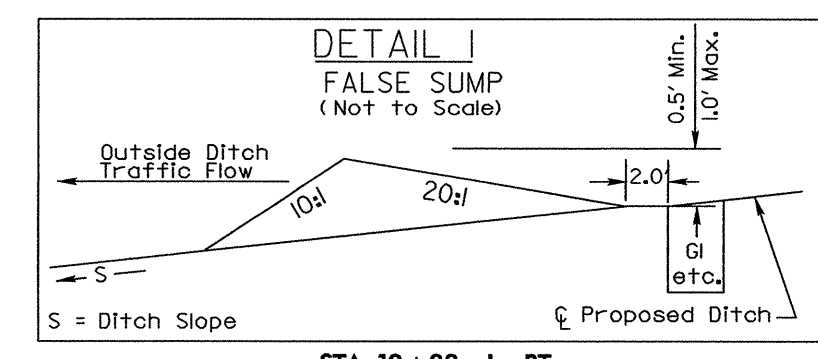
-L-  
 PI Sta 14+42.62  
 $\Delta = 19^{\circ}00'44.3''$  (RT)  
 $D = 4'18''28.6''$   
 $L = 441.33'$   
 $T = 222.71'$   
 $R = 1,330.00'$   
 $DS = 60$  mph  
 $SE = 4.0\%$

NAD 83 (CORS 96)

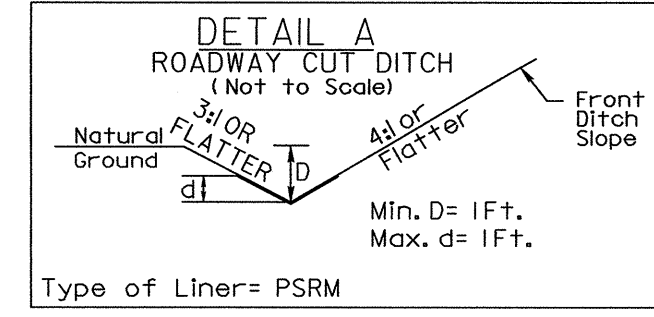


NOTE: THE EXISTING TELEPHONE FIBER OPTIC TO REMAIN. THE CONTRACTOR SHALL USE CAUTION WORKING AROUND THIS LINE.

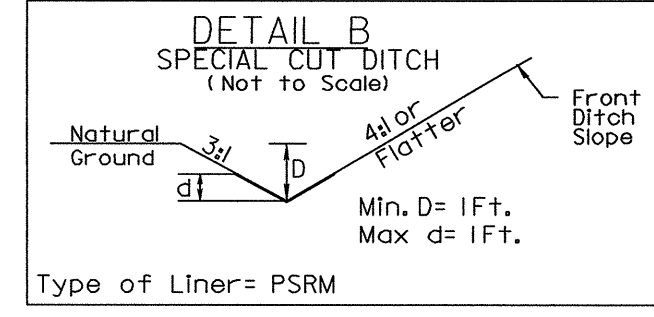
DECK DRAIN SPACING: PLACE 6" DIAMETER DECK DRAINS ON THE LEFT AND RIGHT SIDE OF THE BRIDGE AT 12' CENTER FROM STA. 19+84 TO STA. 20+08 -L- AND FROM STA. 20+92 TO STA. 21+16 -L-.



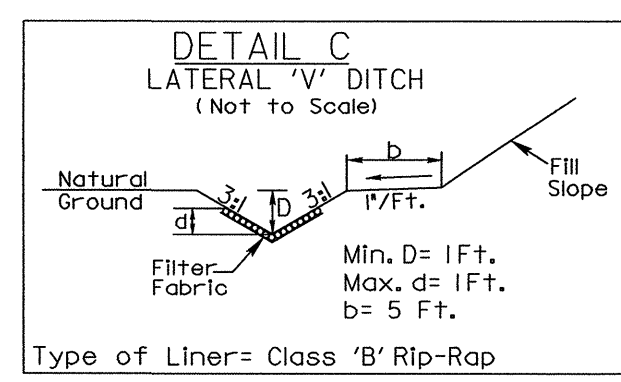
STA 12+33 -L- RT  
 STA 14+17 -L- RT



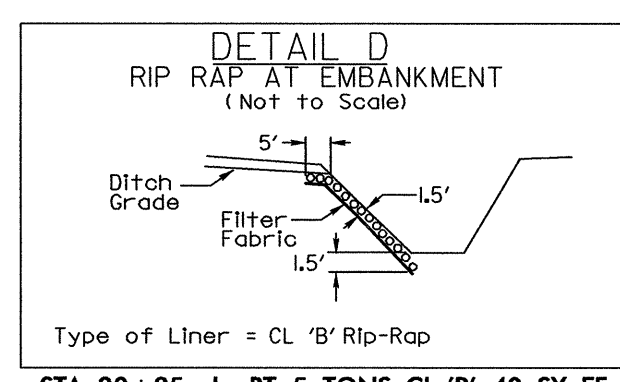
FROM STA. 10+50 TO STA. 11+50 -L- RT  
 FROM STA. 14+17 TO STA. 17+50 -L- RT



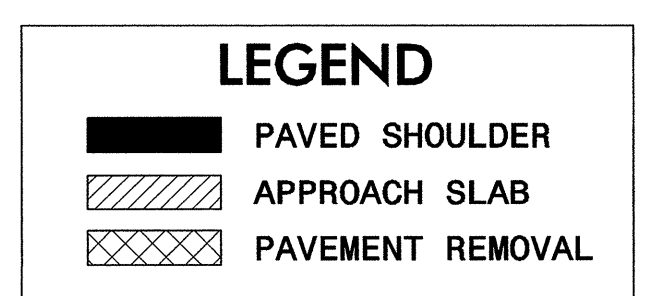
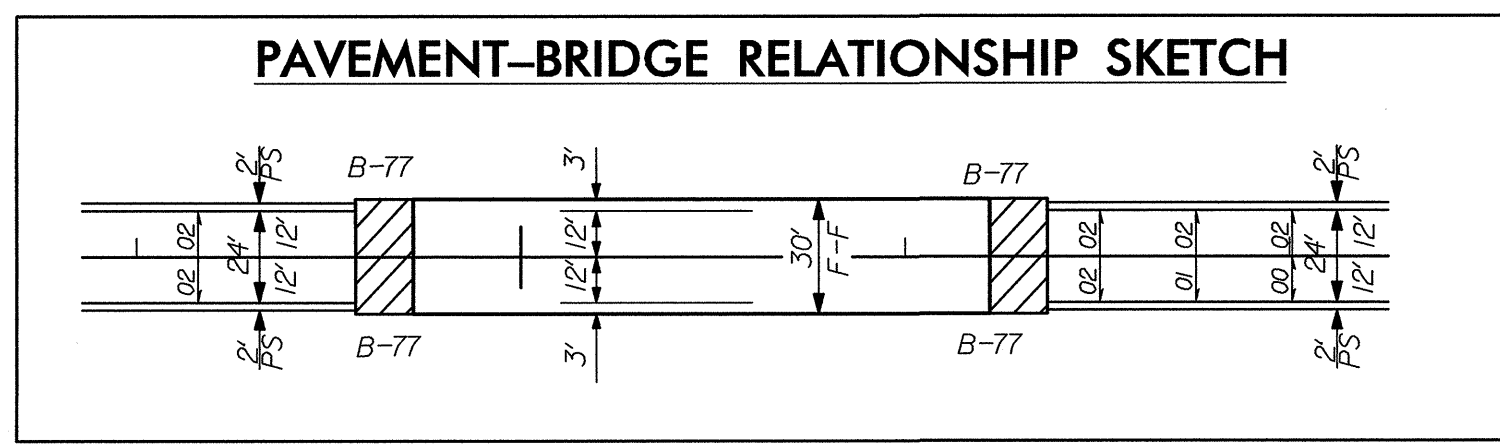
FROM STA. 11+50 TO STA. 14+17 -L- RT



FROM STA. 17+50 TO STA. 20+35 -L- RT  
 FROM STA. 20+94 TO STA. 22+00 -L- RT



STA 20+35 -L- RT: 5 TONS CL 'B' 40 SY FF  
 STA 20+94 -L- RT: 5 TONS CL 'B' 55 SY FF



REVISIONS

MATCH TO SHEET UO-3

8/17/99

8/20/00 AM 8:44:59 Utilities\Proj\B4459\ub02.dgn  
 2/27/2010

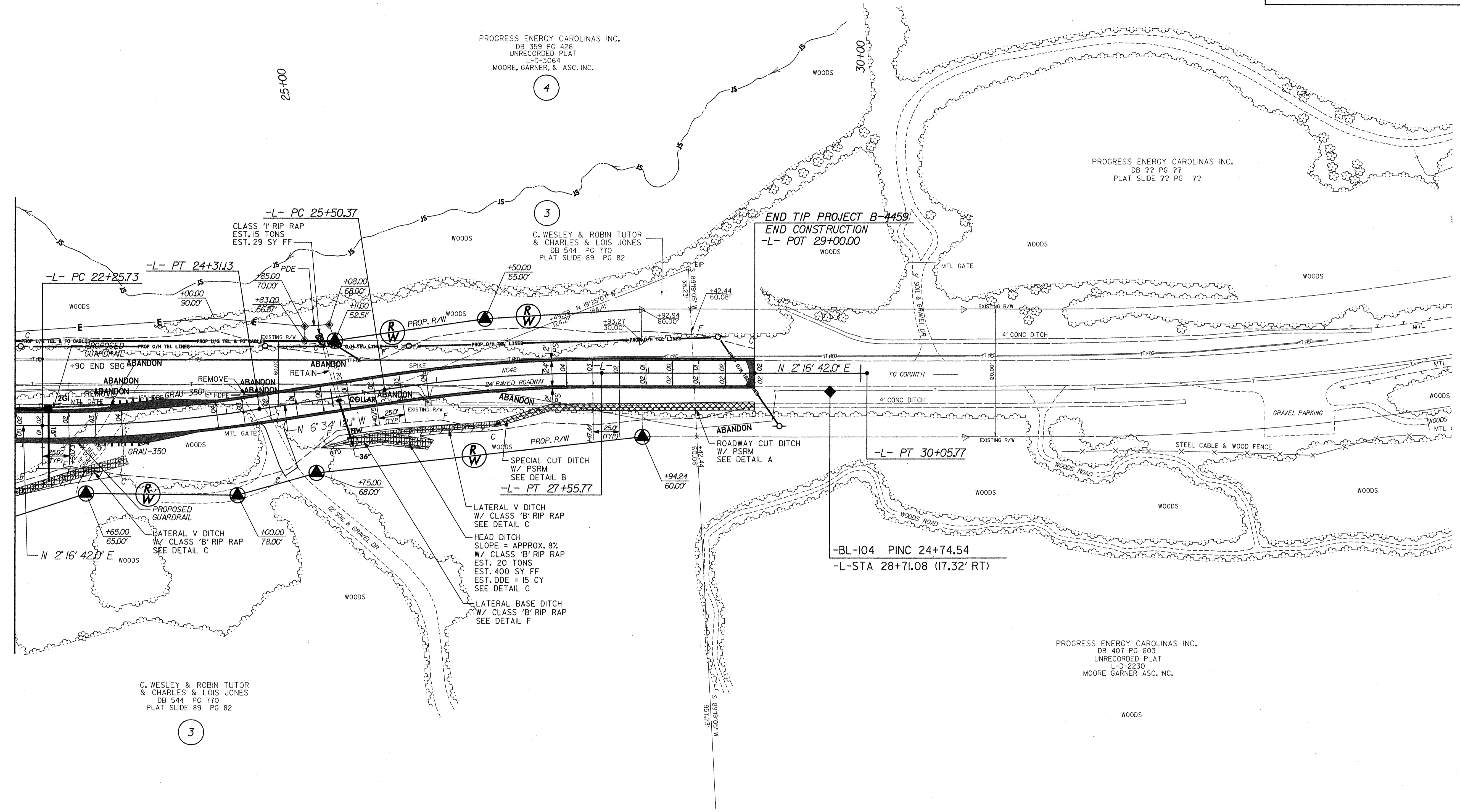
-L-	-L-
PI Sta 23+28.63	PI Sta 26+53.28
$\Delta = 8^{\circ} 50' 54.1''$ (LT)	$\Delta = 8^{\circ} 50' 54.1''$ (RT)
$D = 4' 18.286''$	$D = 4' 18.286''$
$L = 205.40'$	$L = 205.40'$
$T = 102.90'$	$T = 102.90'$
$R = 1,330.00'$	$R = 1,330.00'$
$DS = 60$ mph	$DS = 60$ mph
$SE = 4.0\%$	$SE = 4.0\%$

NAD 83 (CORS 96)

PROGRESS ENERGY CAROLINAS INC.  
DB 359 PG 426  
UNRECORDED PLAT  
L-D-3064  
MOORE, GARNER, & ASC. INC.

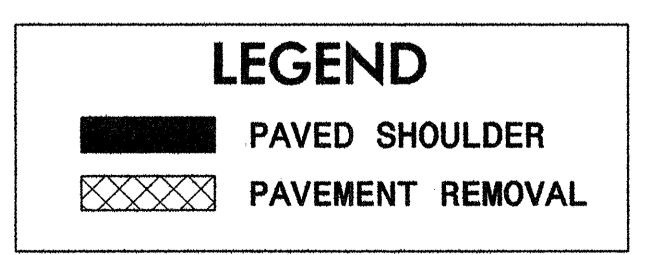
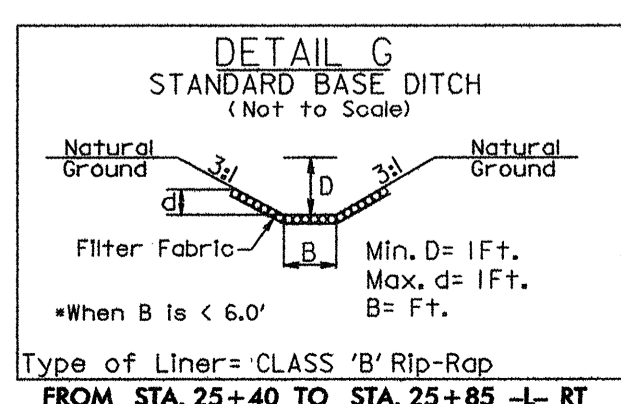
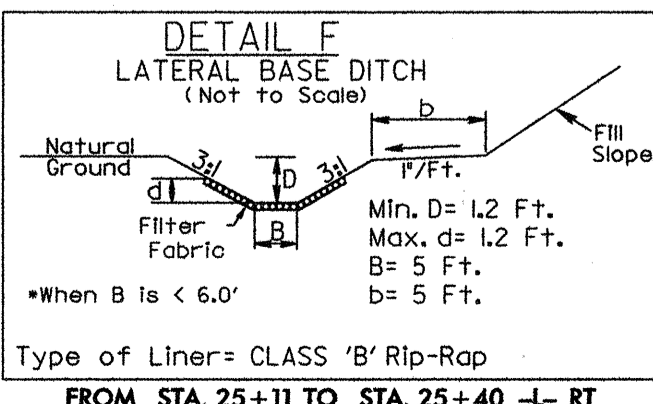
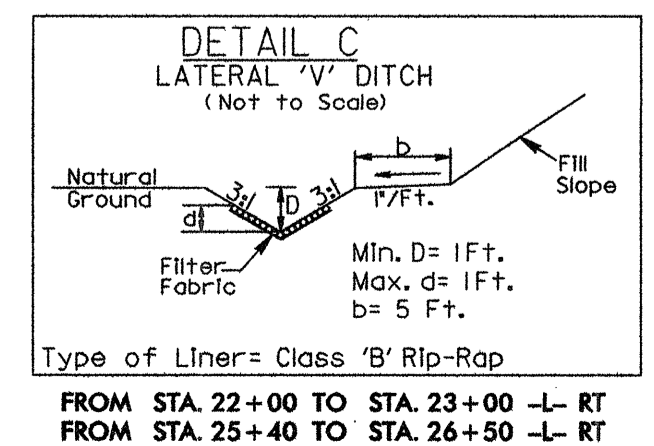
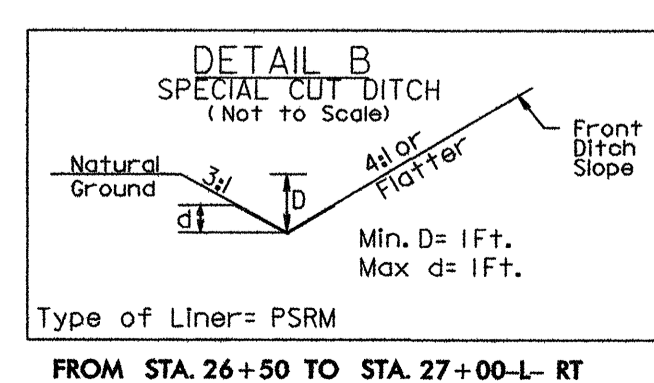
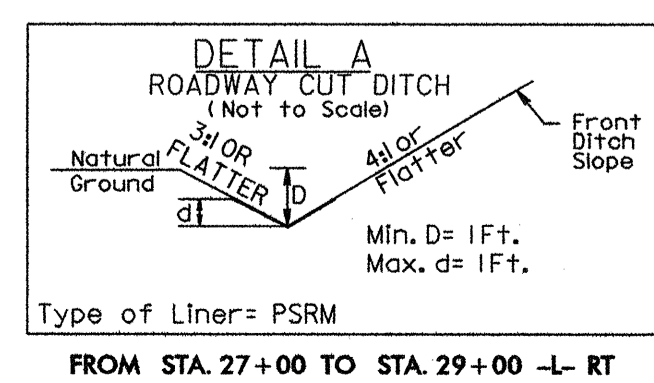
PROGRESS ENERGY CAROLINAS INC.  
DB ?? PG ??  
PLAT SLIDE ?? PG ??

MATCH TO SHEET UO-2



C. WESLEY & ROBIN TUTOR  
& CHARLES & LOIS JONES  
DB 544 PG 770  
PLAT SLIDE 89 PG 82

PROGRESS ENERGY CAROLINAS INC.  
DB 407 PG 603  
UNRECORDED PLAT  
L-D-2230  
MOORE GARNER ASC. INC.



REVISIONS

8/17/99

I:\5400 AM  
P:\2010\B4459\Utilities\Proj\B4459\_u03.dgn  
2/25/2010