

09/28/99

TIP PROJECT: B-4641

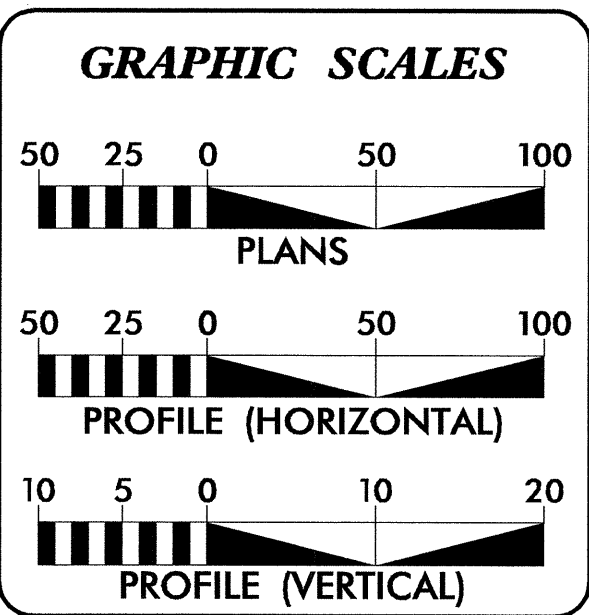
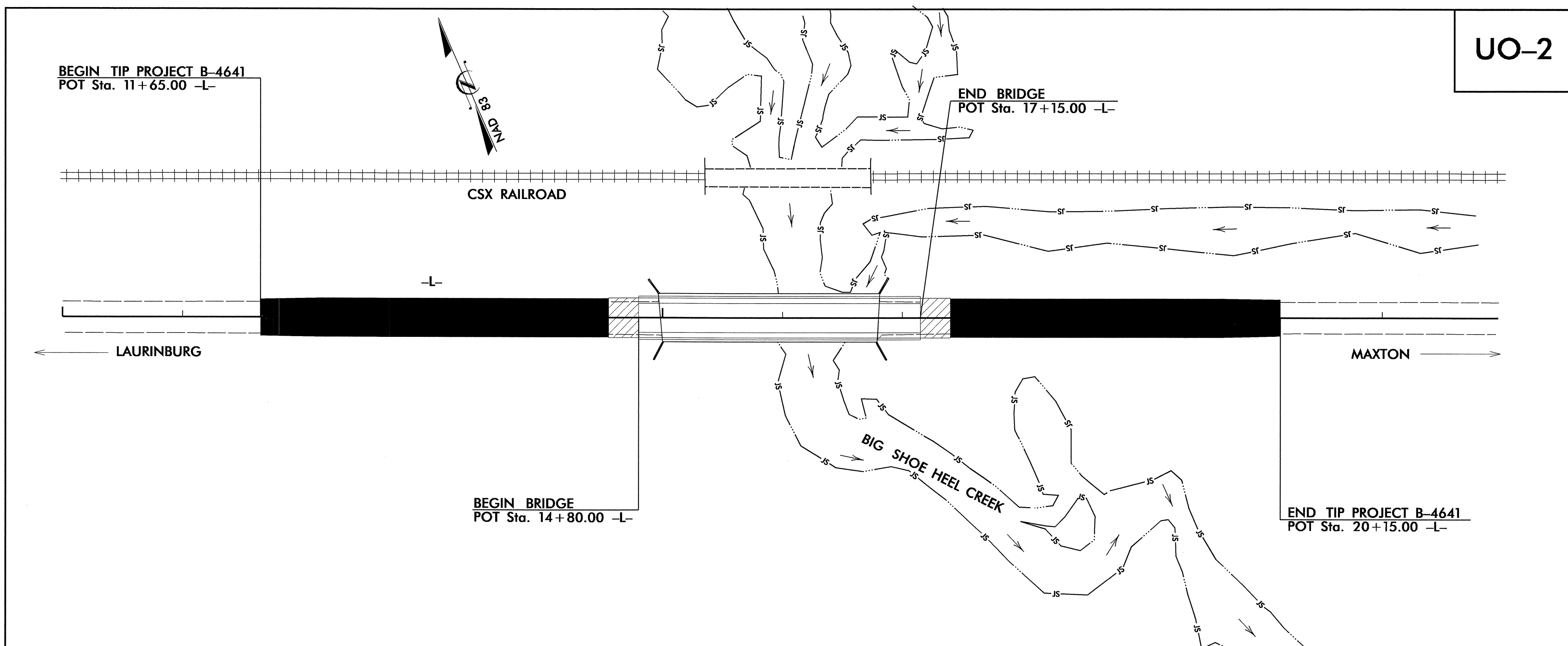
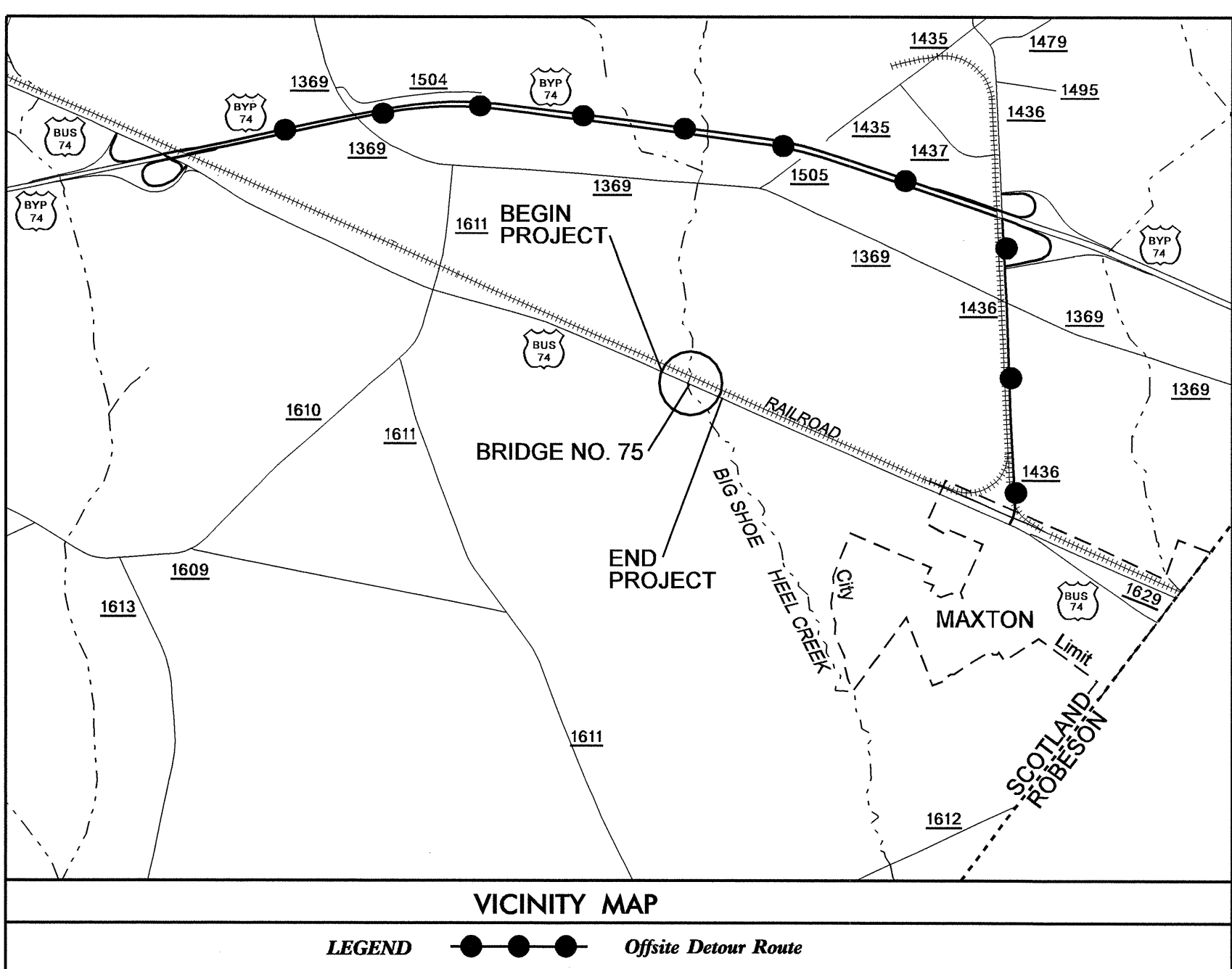
STATE OF NORTH CAROLINA
DIVISION OF HIGHWAYS

T.I.P. NO.	SHEET NO.
B-4641	UO-1

UTILITIES BY OTHERS PLANS
SCOTLAND COUNTY

LOCATION: BRIDGE NO. 75 OVER BIG SHOE HEEL CREEK
ON US 74 BUSINESS

TYPE OF WORK: UTILITIES BY OTHERS



INDEX OF SHEETS

SHEET NO.	DESCRIPTION
UO-1	TITLE SHEET
UO-2	UTILITIES BY OTHERS PLAN SHEETS

UTILITY OWNERS ON PROJECT

- TELEPHONE - AT&T
- TELEPHONE - CENTURYLINK

PREPARED IN THE OFFICE OF:
DIVISION OF HIGHWAYS
UTILITIES ENGINEERING SECTION

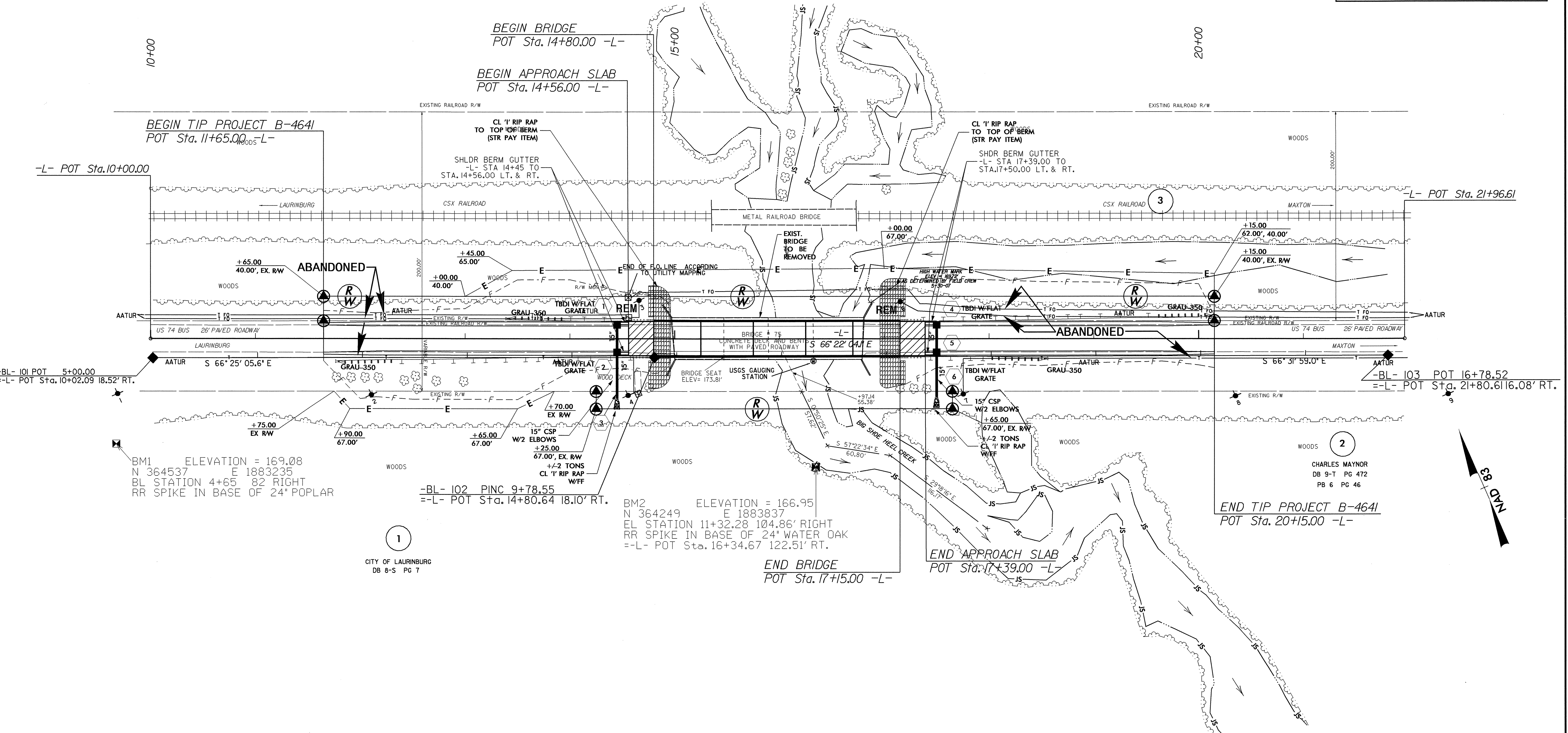
1591 MAIL SERVICES CENTER
RALEIGH NC 27699-1591
PHONE (919) 250-4128
FAX (919) 250-4119

Roger Worthington, P.E. UTILITIES SECTION ENGINEER
Carl A. Barclay, P.E. UTILITIES SQUAD LEADER PROJECT ENGINEER
James E. Swinson UTILITIES PROJECT DESIGNER

02-MAR-2010 11:39
I:\u0001\files\proj\4641\ui_title_uo1-ps1.dgn
USER: JSEBNAME

UTILITIES BY OTHERS

NOTE:
ALL PROPOSED UTILITY WORK
SHOWN ON THIS SHEET WILL
BE DONE BY OTHERS



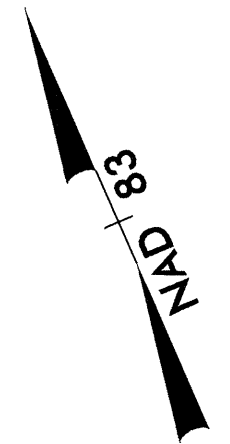
B.M1 ELEVATION = 169.08
N 364537 E 1883235
BL STATION 4+65 82 RIGHT
RR SPIKE IN BASE OF 24\"/>

-BL- 102 P.I.N.C. 9+78.55
=-L- POT Sta. 14+80.64 18.10' RT.

B.M2 ELEVATION = 166.95
N 364249 E 1883837
EL STATION 11+32.28 104.86' RIGHT
RR SPIKE IN BASE OF 24\"/>

1
CITY OF LAURINBURG
DB 8-S PG 7

2
CHARLES MAYNOR
DB 9-T PG 472
PB 6 PG 46
END TIP PROJECT B-4641
POT Sta. 20+15.00 -L-



5/14/99

02-war-2000.it40
\\p01\projects\dwg\laur\p01\proj\laur-4641-ut-4-uo2-psh.dgn