

STATE OF NORTH CAROLINA  
DIVISION OF HIGHWAYS

STATE PROJECT REFERENCE NO.	SHEET NO.
B-4117	TCP-1

**PLAN FOR PROPOSED  
TRAFFIC CONTROL, MARKING & DELINEATION  
GASTON COUNTY**

B-4117

**ROADWAY STANDARD DRAWINGS**

THE FOLLOWING ROADWAY STANDARDS AS APPEAR IN "ROADWAY STANDARD DRAWINGS" - PROJECT SERVICES UNIT-N.C. DEPARTMENT OF TRANSPORTATION-RALEIGH, N.C., DATED JULY 2006 ARE APPLICABLE TO THIS PROJECT AND BY REFERENCE HEREBY ARE CONSIDERED A PART OF THESE PLANS:

STD. NO.	TITLE
1101.03	TEMPORARY ROAD CLOSURES
1101.11	TRAFFIC CONTROL DESIGN TABLES
1110.01	STATIONARY WORK ZONE SIGNS
1145.01	BARRICADES

**INDEX OF SHEETS**

SHEET NO.	TITLE
TCP-1	LIST OF APPLICABLE ROADWAY STANDARD DRAWINGS, LEGEND AND INDEX OF SHEETS
TCP-2	PROJECT NOTES AND PHASING
TCP-3	OFFSITE DETOUR SIGNING AND ROAD CLOSURE SIGNING
SD-1	SPECIAL SIGN DESIGN

**LEGEND**

- GENERAL**
- DIRECTION OF TRAFFIC FLOW
  - NORTH ARROW
  - PROPOSED PVMT. EXIST. PVMT.
  - WORK AREA
  - REMOVAL OF EXISTING PAVEMENT
- TRAFFIC CONTROL DEVICES**
- TYPE I BARRICADE
  - TYPE II BARRICADE
  - TYPE III BARRICADE
  - CONE
  - DRUM SKINNY DRUM
  - FLASHING ARROW PANEL (TYPE C)
  - STATIONARY SIGN
  - PORTABLE SIGN
  - STATIONARY OR PORTABLE SIGN
  - CRASH CUSHION
  - CHANGEABLE MESSAGE SIGN
  - TRUCK MOUNTED IMPACT ATTENUATOR (TMIA)
  - POLICE
  - FLAGGER
- PAVEMENT MARKINGS**
- CRYSTAL/CRYSTAL PAVEMENT MARKER
  - YELLOW/YELLOW PAVEMENT MARKER
  - CRYSTAL/RED PAVEMENT MARKER
  - PAVEMENT MARKING SYMBOLS

TIP PROJECT:

24-NOV-2009 14:09  
\\dot\dfs\proj\11\proj\traffic\trafficcontrol\tcp\b-4117\_fc\_tcp.dgn  
spjennings AL WZTC24731

APPROVED: _____ DATE: _____	PLAN PREPARED BY: N.C.D.O.T. WORK ZONE TRAFFIC CONTROL UNIT
	STUART BORNE, P.E. <b>TRAFFIC CONTROL ENGINEER</b>
	JOSEPH ISHAK, P.E. <b>TRAFFIC CONTROL PROJECT ENGINEER</b>
	J. L. PORTANOVA, P.E. <b>TRAFFIC CONTROL PROJECT DESIGN ENGINEER</b>
	SPENCER JENNINGS <b>TRAFFIC CONTROL DESIGN ENGINEER / TECHNICIAN</b>

**PROJECT NOTES**

CHANGES MAY BE REQUIRED WHEN PHYSICAL DIMENSIONS IN THE DETAIL DRAWINGS, STANDARD DETAILS, AND ROADWAY DETAILS ARE NOT ATTAINABLE TO MEET FIELD CONDITIONS OR RESULT IN DUPLICATE OR UNDESIRED OVERLAPPING OF DEVICES. MODIFICATION MAY INCLUDE: MOVING, SUPPLEMENTING, COVERING, OR REMOVAL OF DEVICES AS DIRECTED BY THE ENGINEER.

THE FOLLOWING GENERAL NOTES APPLY AT ALL TIMES FOR THE DURATION OF THE CONSTRUCTION PROJECT EXCEPT WHEN OTHERWISE NOTED IN THE PLAN OR DIRECTED BY THE ENGINEER.

TRAFFIC PATTERN ALTERATIONS

- A) NOTIFY THE ENGINEER TWENTY ONE (21) CALENDAR DAYS PRIOR TO ANY TRAFFIC PATTERN ALTERATION.

SIGNING

- B) PROVIDE PERMANENT SIGNING.
- C) PROVIDE SIGNING AND DEVICES REQUIRED TO CLOSE THE ROAD ACCORDING TO THE ROADWAY STANDARD DRAWINGS AND TRAFFIC CONTROL PLANS.

PROVIDE SIGNING REQUIRED FOR THE OFF-SITE DETOUR ROUTE AS SHOWN IN THE TRAFFIC CONTROL PLANS.

- D) COVER OR REMOVE ALL SIGNS AND DEVICES REQUIRED TO CLOSE THE ROAD WHEN ROAD CLOSURE IS NOT IN OPERATION.

COVER OR REMOVE ALL SIGNS REQUIRED FOR THE OFF-SITE DETOUR WHEN THE DETOUR IS NOT IN OPERATION.

- E) ENSURE ALL NECESSARY SIGNING IS IN PLACE PRIOR TO ALTERING ANY TRAFFIC PATTERN.

TRAFFIC CONTROL DEVICES

- F) PLACE TYPE III BARRICADES, WITH "ROAD CLOSED" SIGN R11-2 ATTACHED, OF SUFFICIENT LENGTH TO CLOSE ENTIRE ROADWAY.

**PHASING**

NOTE: MAINTAIN VEHICULAR ACCESS TO DRIVEWAYS AT ALL TIMES DURING CONSTRUCTION UNLESS OTHERWISE DIRECTED BY THE ENGINEER.

STEP 1: USING RSD 1101.03, SHEET 1 OF 9, SHEETS TCP-3 AND SD-1, INSTALL DETOUR SIGNS, PLACE TYPE III BARRICADES TO CLOSE SR-1820 (ALEXIS HIGH SHOALS RD) TO THROUGH TRAFFIC, AND DETOUR TRAFFIC OFFSITE.

STEP 2: AWAY FROM TRAFFIC, COMPLETE THE FOLLOWING:

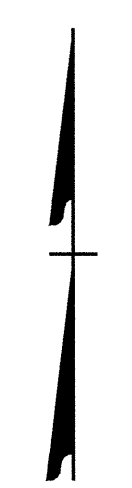
- 1) REMOVE EXISTING STRUCTURE (NO. 173) AND CONSTRUCT PROPOSED CULVERT FROM -L- STA. 20+25 TO STA. 20+49. SEE ROADWAY PLANS.
- 2) CONSTRUCT PROPOSED ROADWAY UP TO AND INCLUDING FINAL SURFACE COURSE LAYER FROM -L- STA 18+00 TO STA 23+00 AND TIE INTO EXISTING PAVEMENT MARKINGS.
- 3) PLACE FINAL PAVEMENT MARKINGS FROM -L- STA. 18+00 TO -L- STA. 23+00 AND TIE INTO EXISTING PAVEMENT MARKINGS.

STEP 3: REMOVE ALL TRAFFIC CONTROL DEVICES AND DETOUR SIGNING. OPEN SR-1820 (ALEXIS HIGH SHOALS RD) TO PROPOSED TRAFFIC PATTERN.

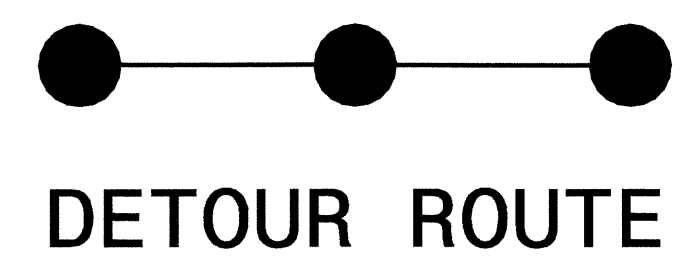
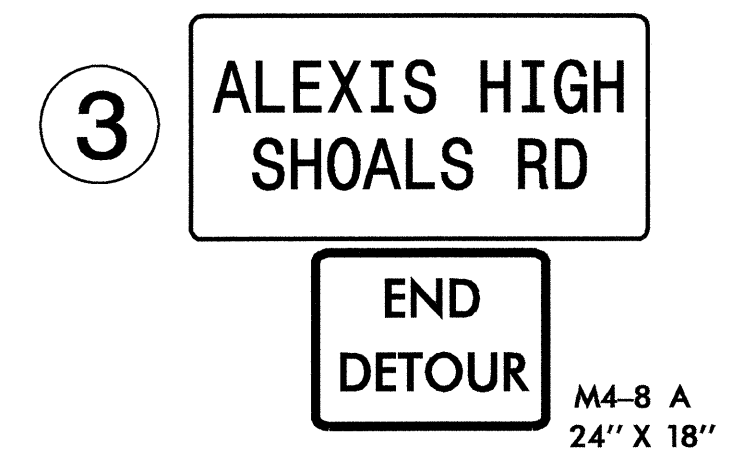
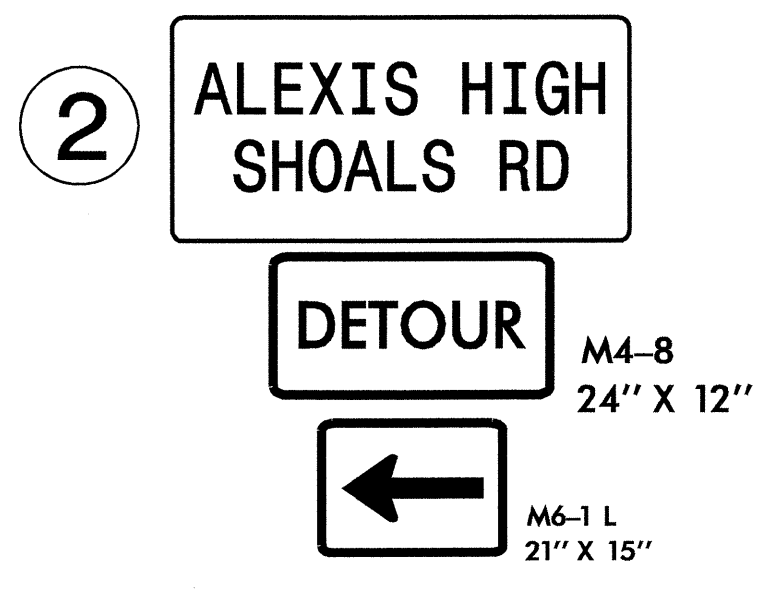
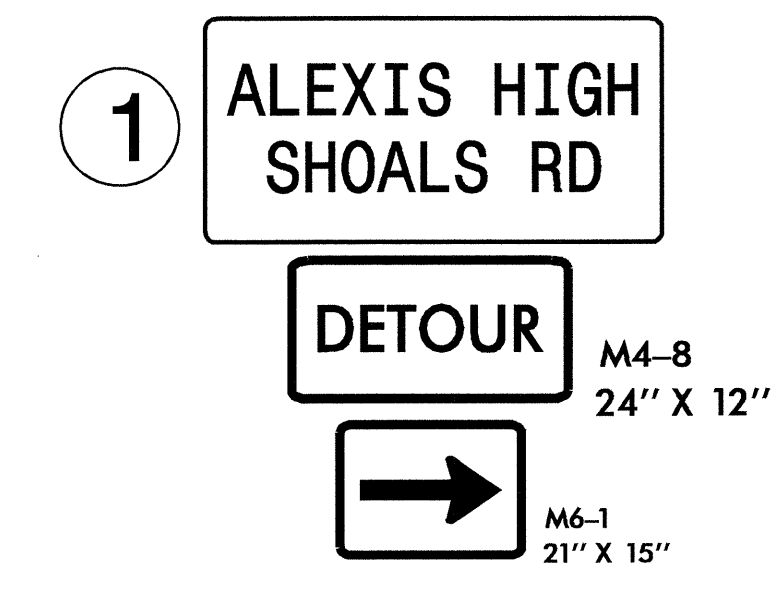
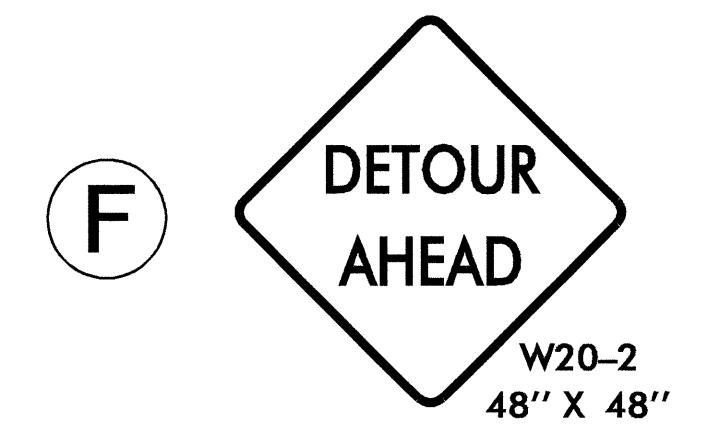
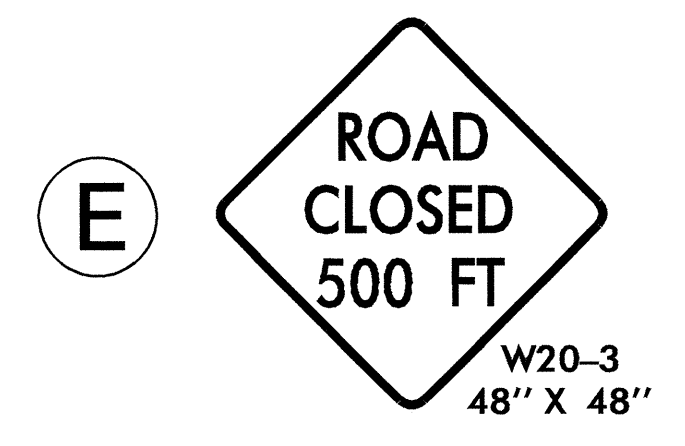
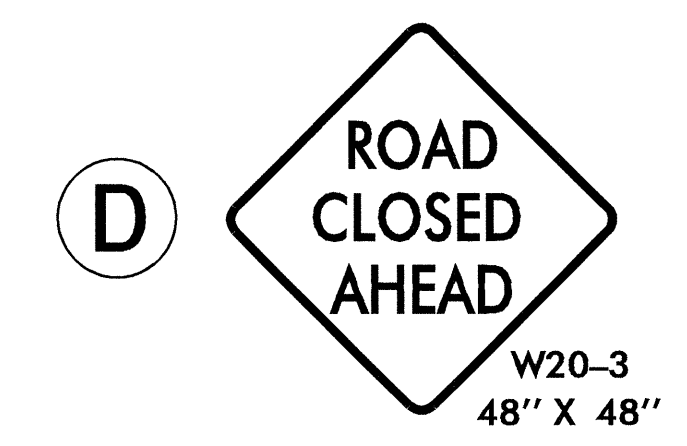
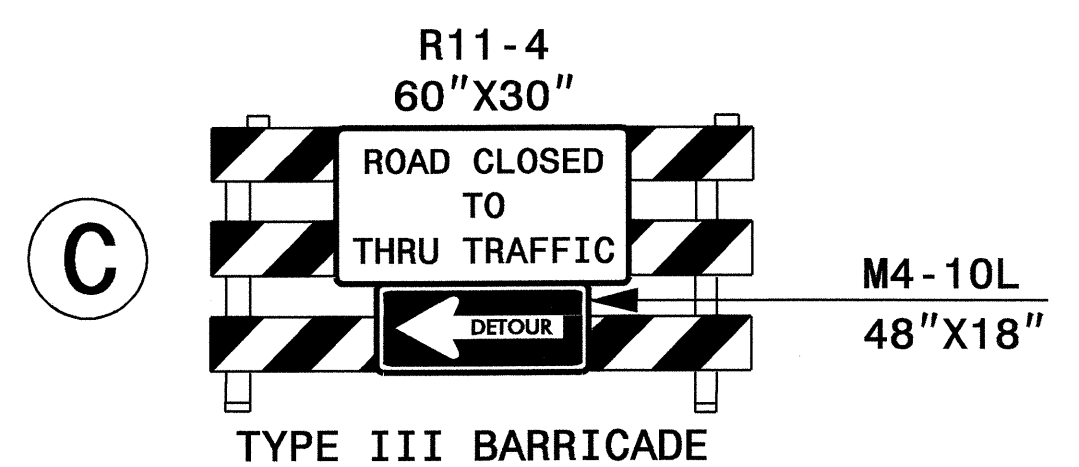
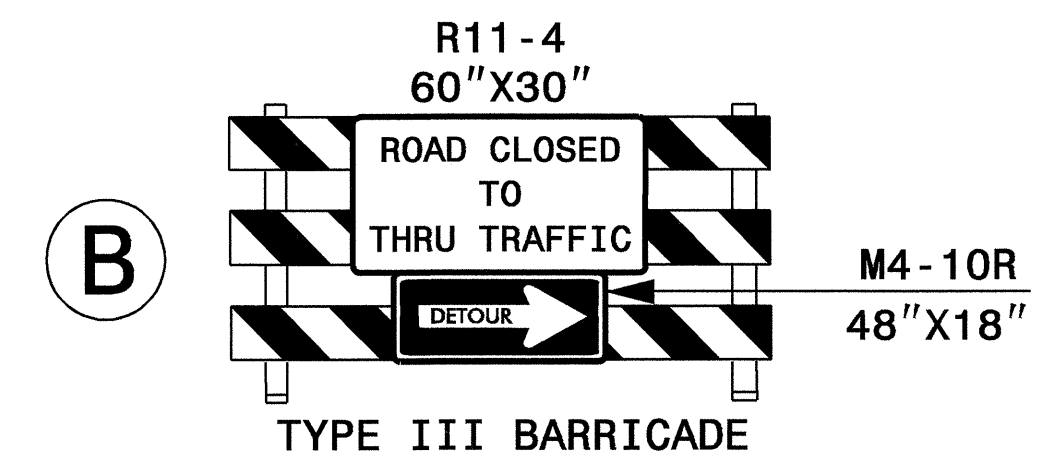
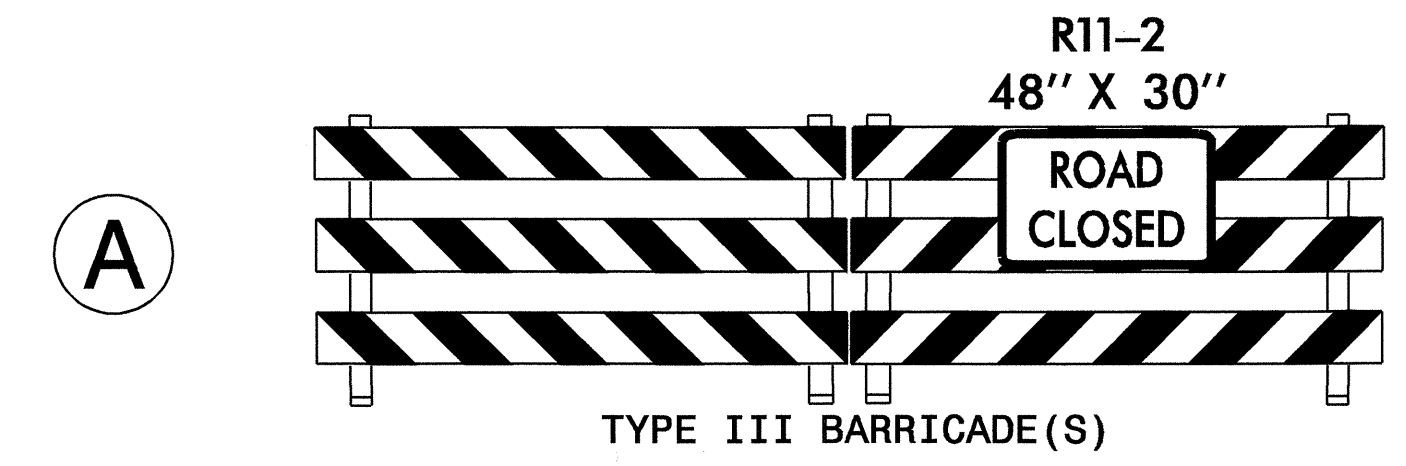
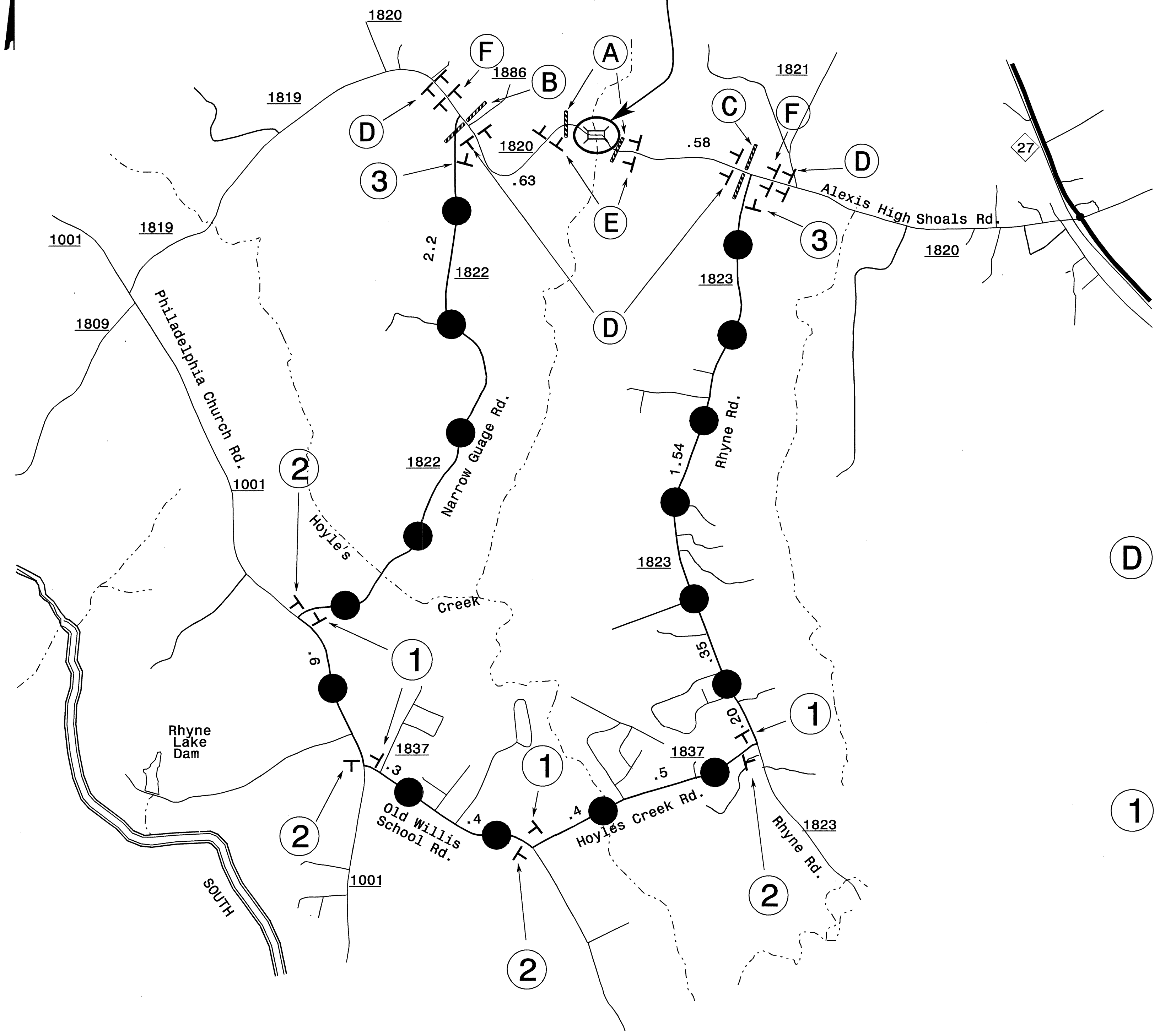
24-NOV-2009 14:44  
 \\dot\dfs\root\proj\1\proj\trafficcontrol\top\B-4117\_TC\_TCP\_2.dgn  
 sbjennings AT WZ TC24473

APPROVED: _____ DATE: _____	<b>PROJECT NOTES AND PHASING</b>	
	SCALE: NONE	
	DATE: NOV 09	
	DWG. BY: SBJ	
	DESIGN BY: SBJ	
REVIEWED BY: JLP	REVISIONS	

**VICINITY MAP: GASTON COUNTY**



**B-4117 PROJECT SITE**



**NOTES:**

TRAFFIC CONTROL DEVICES (A) THRU (F) SHALL BE INSTALLED ACCORDING TO ROADWAY STANDARD DRAWING NO. 1101.03, SHEET 1 OF 9.

INSTALL DETOUR SIGNS (1) THRU (3) ACCORDING TO THE DIRECTION OF THE ENGINEER.

24-NOV-2009 14:30 \\p01\proj\traffic\control\tcp\B-4117\_TC\_TCP\_3.dgn  
 sblennings AT WZTC244731

APPROVED: _____ DATE: _____	<b>OFFSITE DETOUR SIGNING AND ROAD CLOSURE SIGNING</b>		REVISIONS	
			SCALE: NONE	
DATE: NOV 09				
DWG. BY: SBJ				
DESIGN BY: SBJ				
REVIEWED BY: JLP				