

09/08/09
 CONTRACT: U-4907
 TIP PROJECT: U-4907
 CONTRACT: C202389

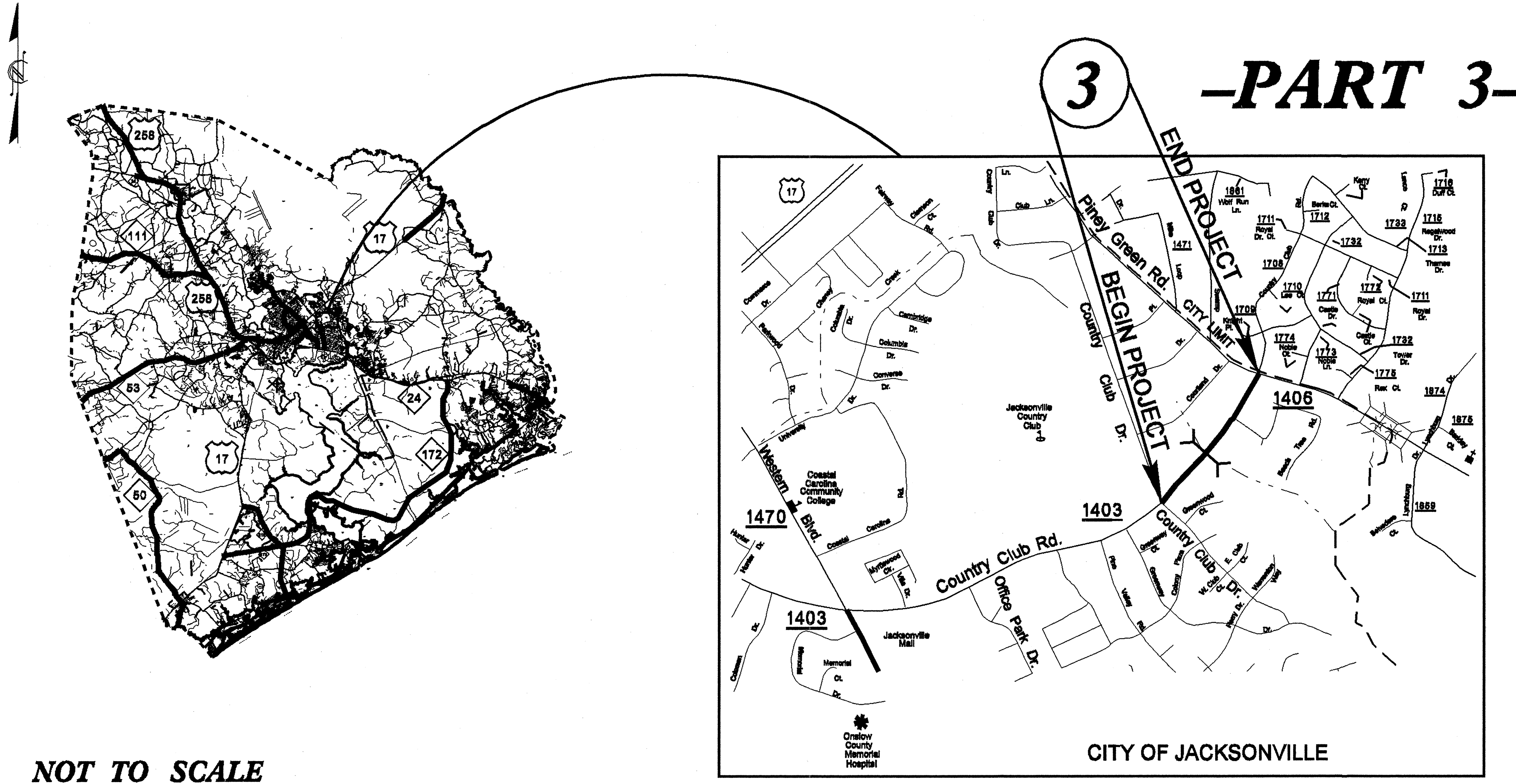
STATE OF NORTH CAROLINA
 DIVISION OF HIGHWAYS

ONSLOW COUNTY

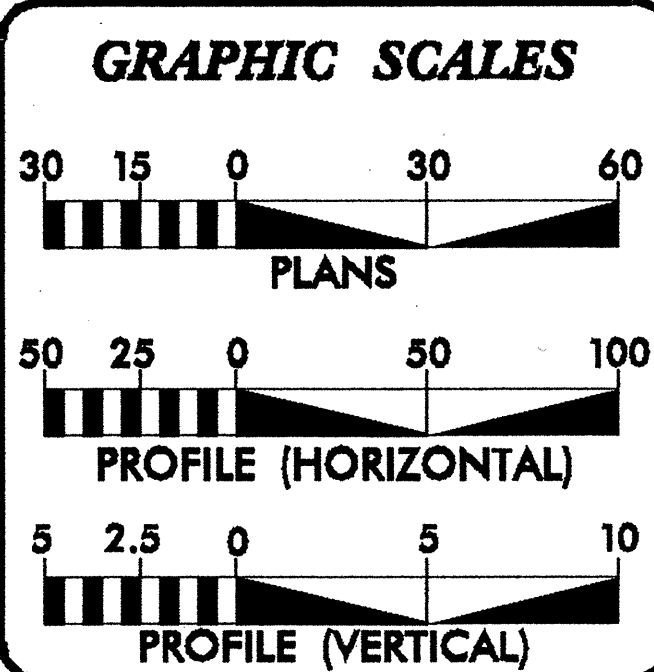
LOCATION: SR 1403 (COUNTRY CLUB ROAD) FROM NORTH OFFICE PARK DRIVE
 TO SR 1406 (PINEY GREEN ROAD) IN THE CITY OF JACKSONVILLE.

TYPE OF WORK: GRADING, DRAINAGE, WIDENING, AND PAVING.

STATE	STATE PROJECT REFERENCE NO.	SHEET NO.	TOTAL SHEETS
N.C.	U-4907	1	
STATE PROJ. NO.	F.A. PROJ. NO.	DESCRIPTION	
40256.1.1	STP-1403 (9)	PE	
40256.2.1	STP-1403 (9)	R/W	
40256.3.1	STP-1403 (9)	CONST.	



NOT TO SCALE



DESIGN DATA

PROJECT LENGTH

MAP NO. 3 = 0.34 MI.

TOTAL = 0.34 MI.

Prepared in the Office of:
DIVISION OF HIGHWAYS
 124 Division Dr., Wilmington, NC 28401

2006 STANDARD SPECIFICATIONS

RIGHT OF WAY DATE:

LETTING DATE:
 APRIL 20, 2010

HYDRAULICS ENGINEER

SIGNATURE: _____ P.E.

ROADWAY DESIGN TECHNICIAN

DNL

SIGNATURE: _____

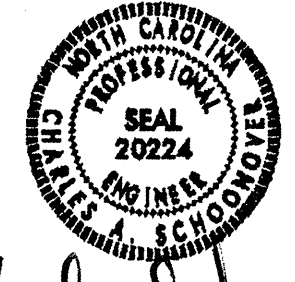
SIGNATURE: _____

DIVISION OF HIGHWAYS
 STATE OF NORTH CAROLINA

PROFESSIONAL SEAL
 20224
 CHARLES A. SCHROEDER, P.E.
 2/13/10
 DIVISION DESIGN ENGINEER

02-FEB-2010 16:26
 P:\FDY\ADONE\FONSL\ONSLOW\FOUR ONSLOW ROADS_R.CL-CC-OC\DCN\cc.Fdy_tsh.dgn
 dldfave AT DSCAD231935

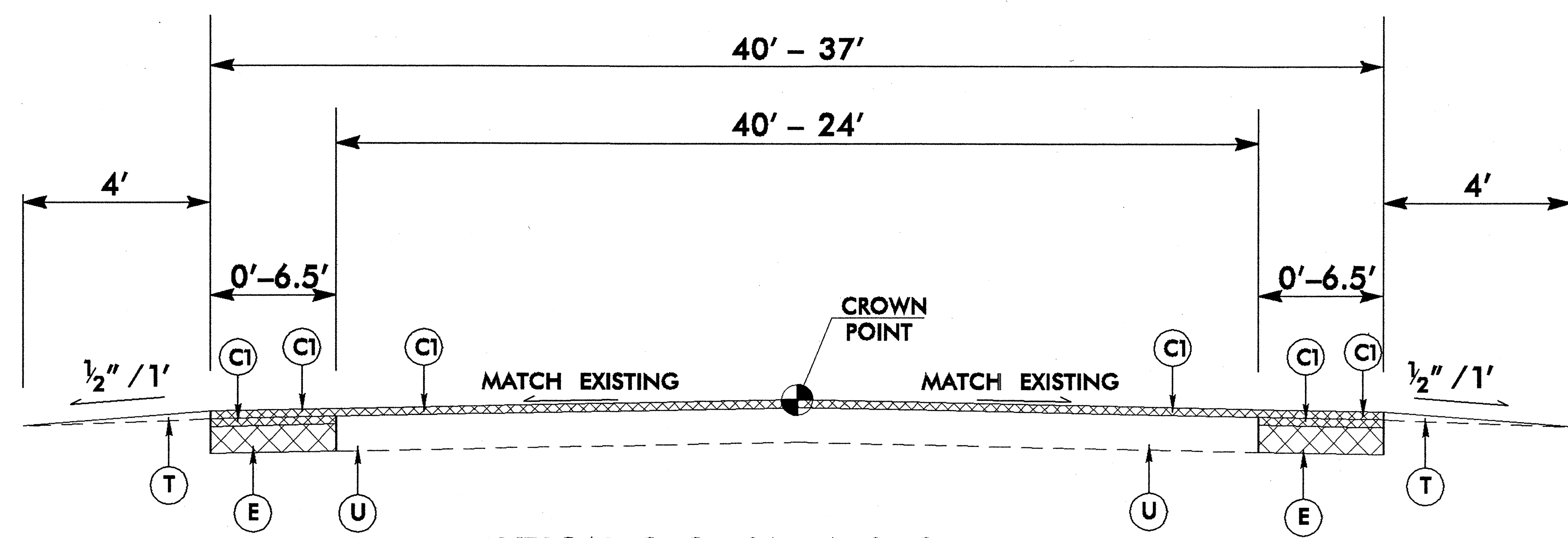
DIVISION OF HIGHWAYS
STATE OF NORTH CAROLINA



Charles A. Schmitt
DIVISION DESIGN ENGINEER

1-28-10

REVISIONS
 22-JAN-2010 11:45
 rdy done
 203627385
 \p1\proj\1403\low roads_r_c1.cd\qc\dgn\sec_rdy_tjy.dgn



PAVEMENT SCHEDULE	
C1	PROP. 1 1/2" DEPTH ASPHALT CONCRETE SURFACE COURSE, TYPE 89.5B, AT AN AVERAGE RATE OF 168 LBS. PER SQ. YD.
E	PROP. APPROX. 5 1/2" ASPHALT CONCRETE BASE COURSE, TYPE B25.0B, AT AN AVERAGE RATE OF 627 LBS. PER SQ. YD.
T	EARTH MATERIAL.
U	EXISTING PAVEMENT.

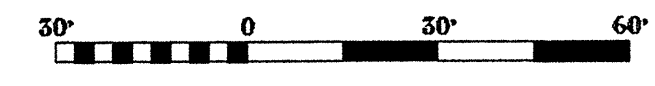
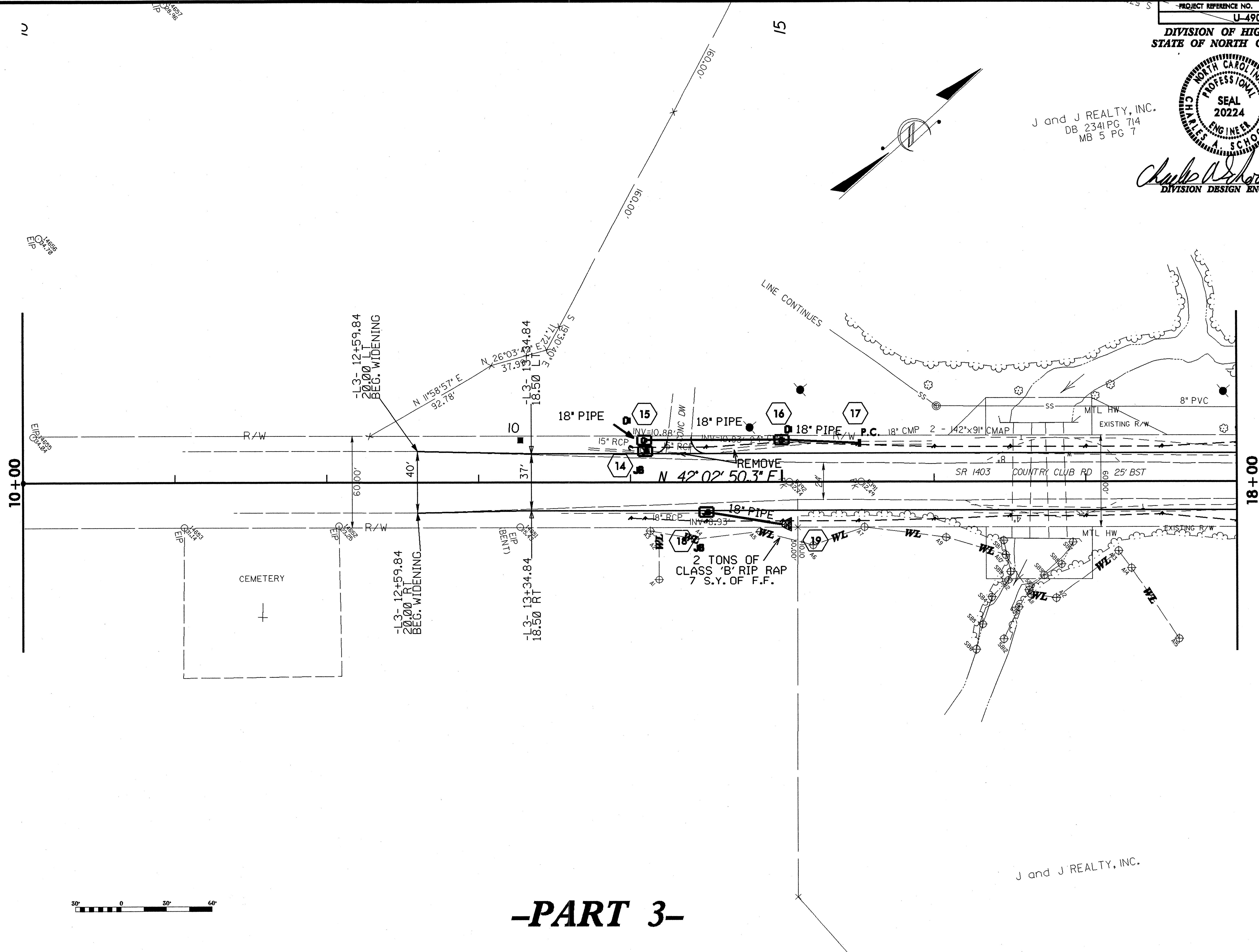
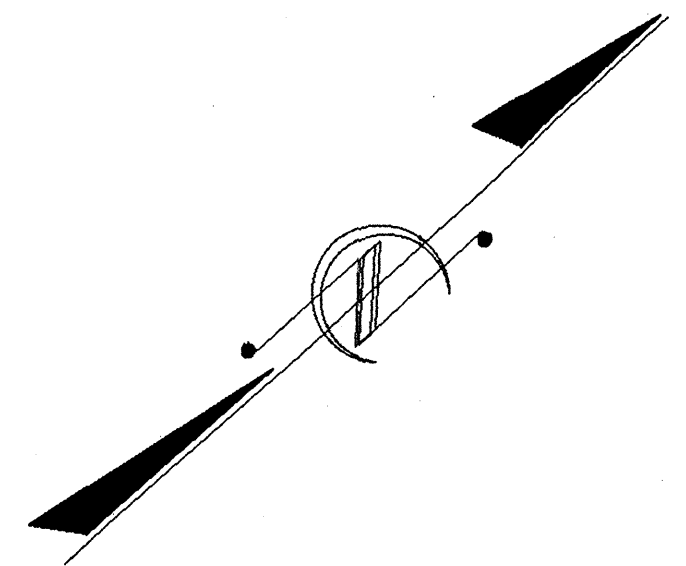
TYPICAL SECTION NO. 3
SR 1403 (COUNTRY CLUB ROAD) MP 0.24 (STA. 12+59.84) TO MP 0.58 (STA. 30+56.78)
 - PART 3 -

VAR. VAR SEE X-SECTIONS
 VAR SEE X-SECTIONS



J and J REALTY, INC.
 DB 2341 PG 714
 MB 5 PG 7

Charles A. Schoonover 2/15/10
 P.E.
 DIVISION DESIGN ENGINEER



-PART 3-

REVISIONS

8/17/99
 15-FEB-2010 14:15 D:\NSLOW\FOUR ONSLOW\ROADS_R.CL\CC_OC.DGN\cc.psh.1.dgn
 R:\RDY\COONEY\ONSL\ROADS_R.CL\CC_OC.DGN\cc.psh.1.dgn
 AT 13:41:23

J and J REALTY, INC.

DIVISION OF HIGHWAYS
STATE OF NORTH CAROLINA



JAMES WILSON, JR.
DB 2304 PG III
MB 5 PG 7
1-26-10
Charles E. Johnson P.E.
STATE HIGHWAY DESIGN ENGINEER

DORIAN E. JOHNSON
DB 2182 PG 693
MB 5 PG 7

CHARLES B. CLARK, ET AL
DB 1021 PG 397
MB 5 PG 7

DAVID M. DEHART
DB 1871 PG 490
MB 18 PG 76

HUBERT SAUNDERS, ET UX
DB 1007 PG 570

HUBERT SAUNDERS, ET UX
DB 1007 PG 570

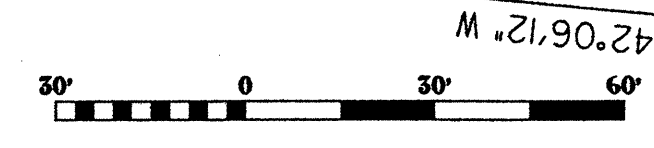
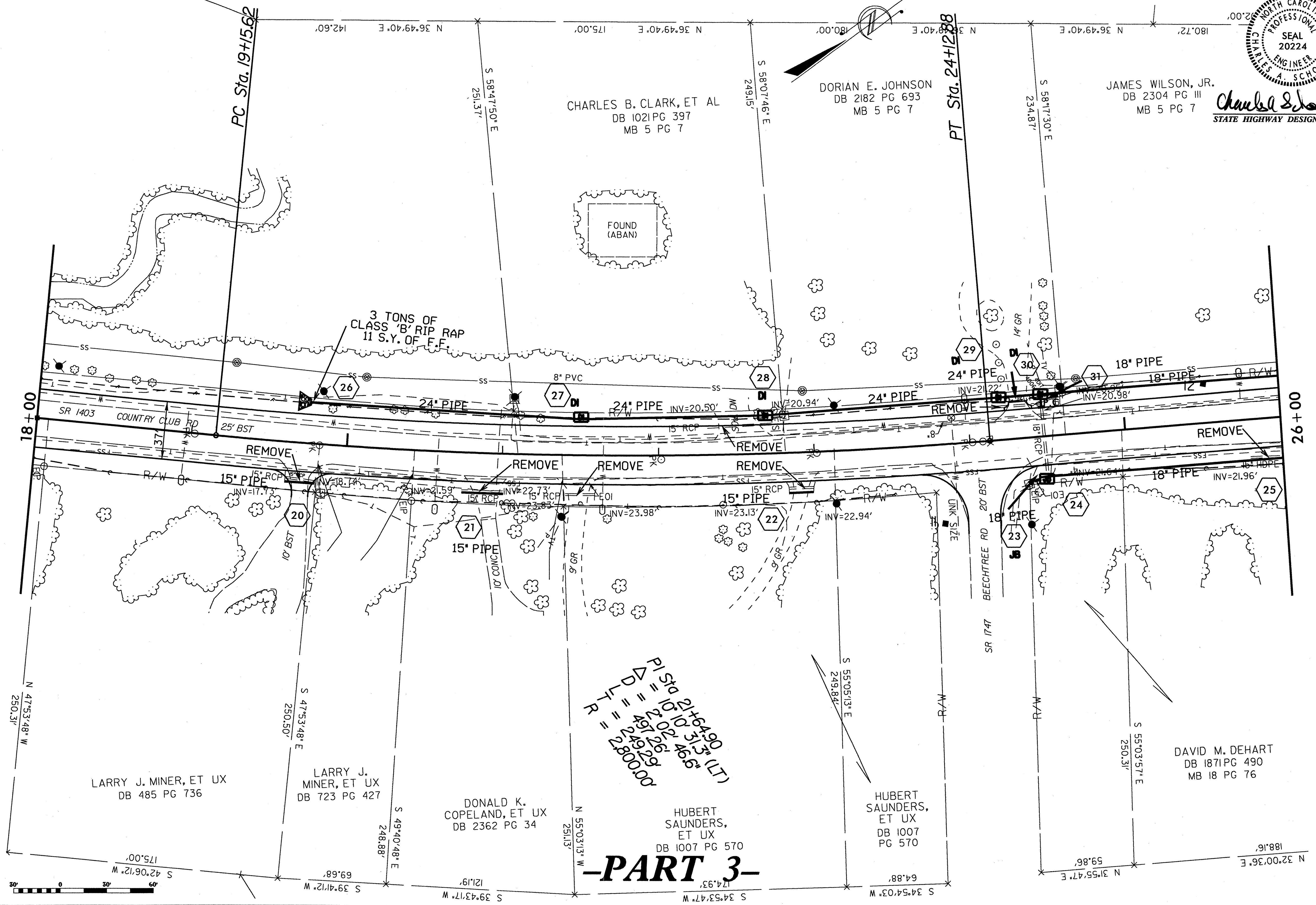
DONALD K. COPELAND, ET UX
DB 2362 PG 34

LARRY J. MINER, ET UX
DB 723 PG 427

LARRY J. MINER, ET UX
DB 485 PG 736

-PART 3-

PI STA 21+64.90 (LT)
= 21.6490
= 21.6490
= 21.6490
= 21.6490
= 21.6490
= 21.6490
= 21.6490
= 21.6490
= 21.6490
= 21.6490



REVISIONS

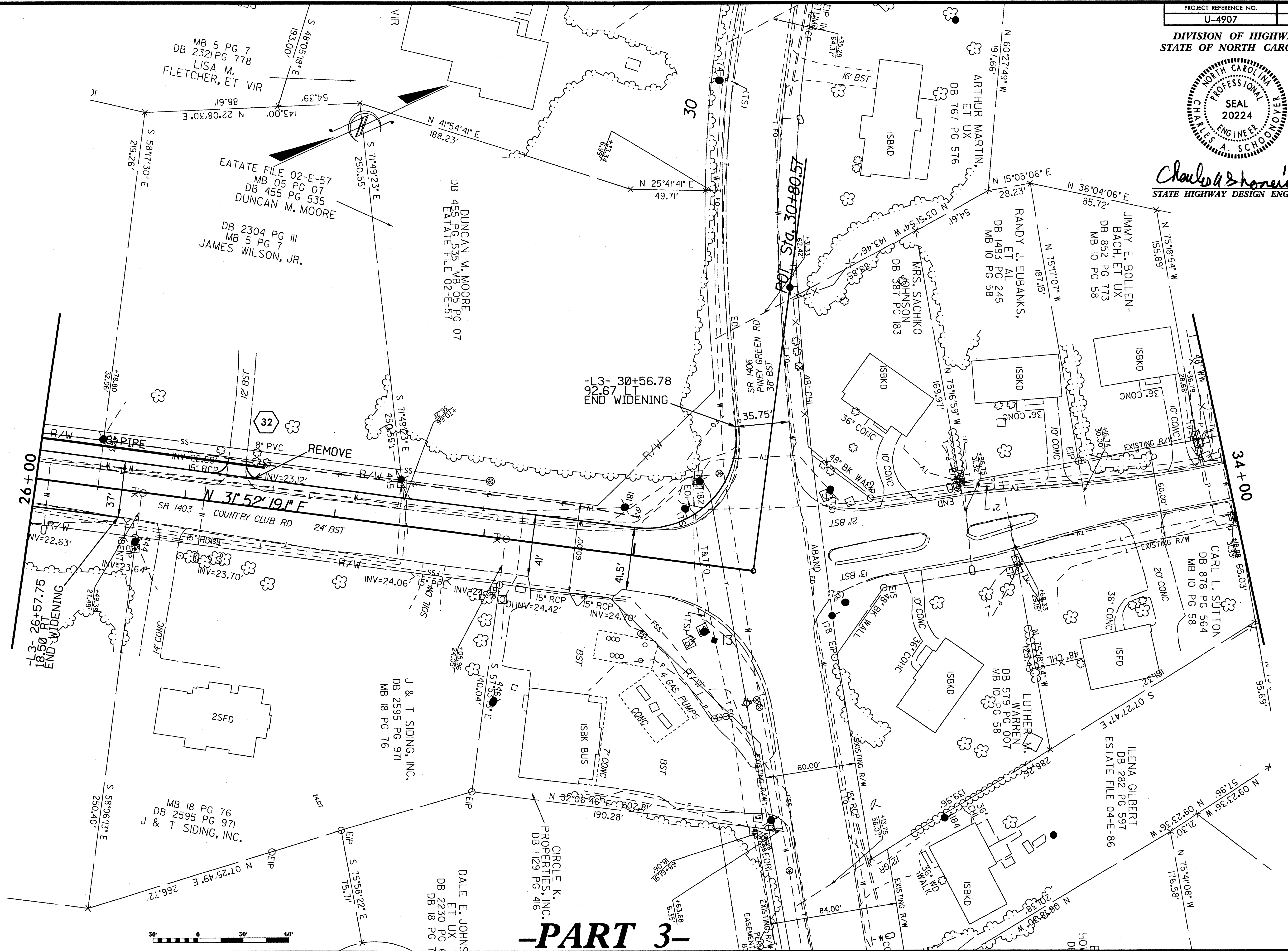
8/17/99

25-MAN-280-10-985
R:\HDY\DOONE\CONTRACTS\404\ON-SLOW ROADS.R.CL\CC-OC\DGN\CC.psh-2.dgn

DIVISION OF HIGHWAYS
STATE OF NORTH CAROLINA



Charles A. Schoonover 1-25-10
STATE HIGHWAY DESIGN ENGINEER P.E.



-PART 3-

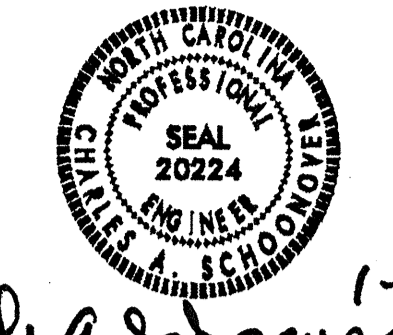
REVISIONS

8/17/99

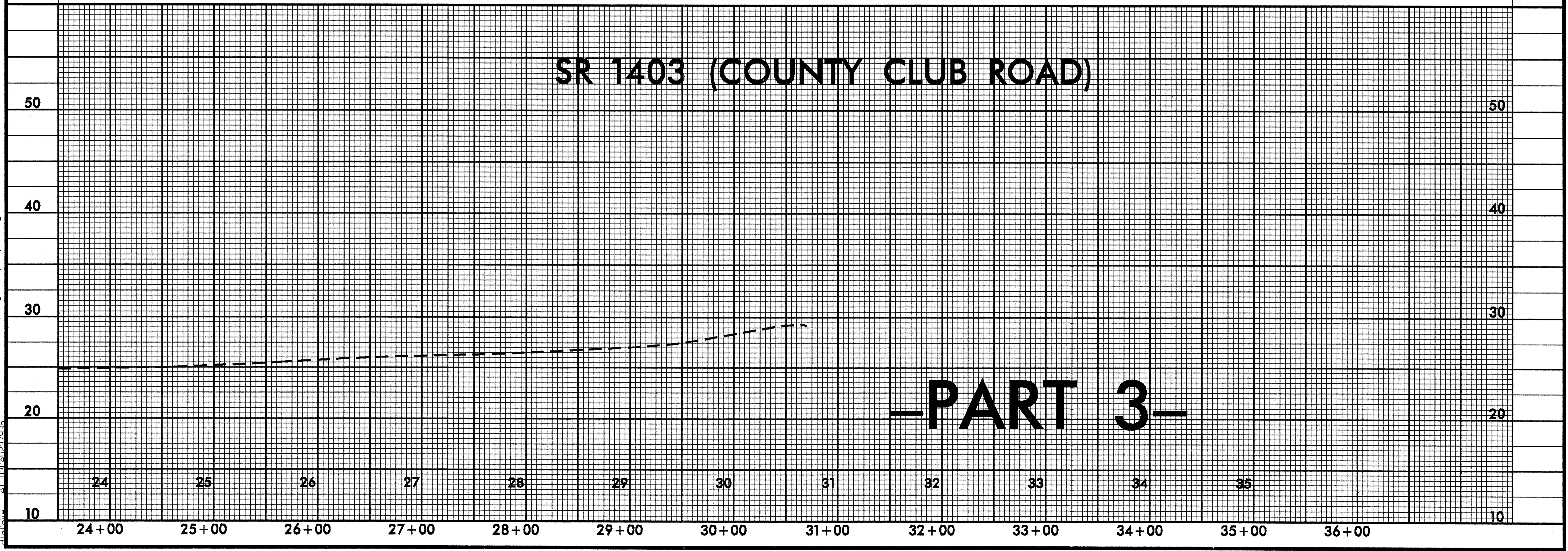
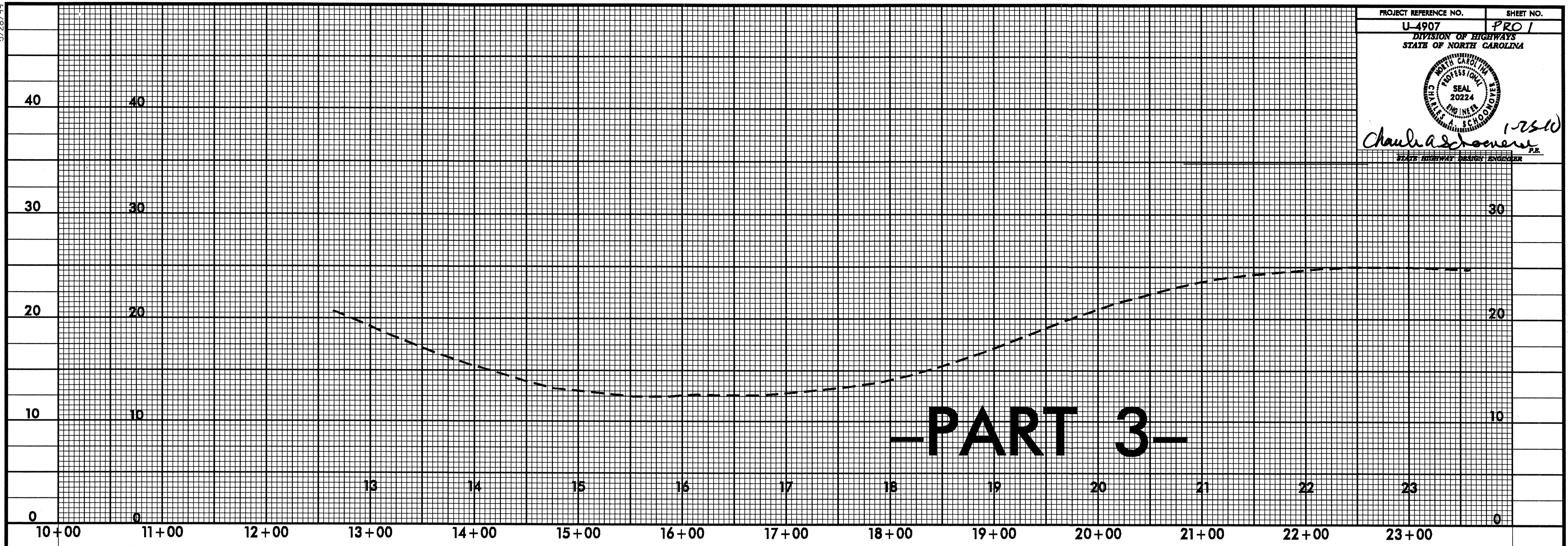
REVISIONS: 01/03/08 EISENBERGER ONSLOW ROADS, R.C.L. CC: DC\DN\cc-phs-3.dgn

5/28/99

PROJECT REFERENCE NO.	SHEET NO.
U-4907	PRO 1
DIVISION OF HIGHWAYS	
STATE OF NORTH CAROLINA	



Charles Schoener
STATE HIGHWAY DESIGN ENGINEER



25-JAN-2010 10:36
C:\msdcs\share\proj\four_onslow_roads_r-el-cc-ge\dgn\cc-esh-pfl-1.dgn