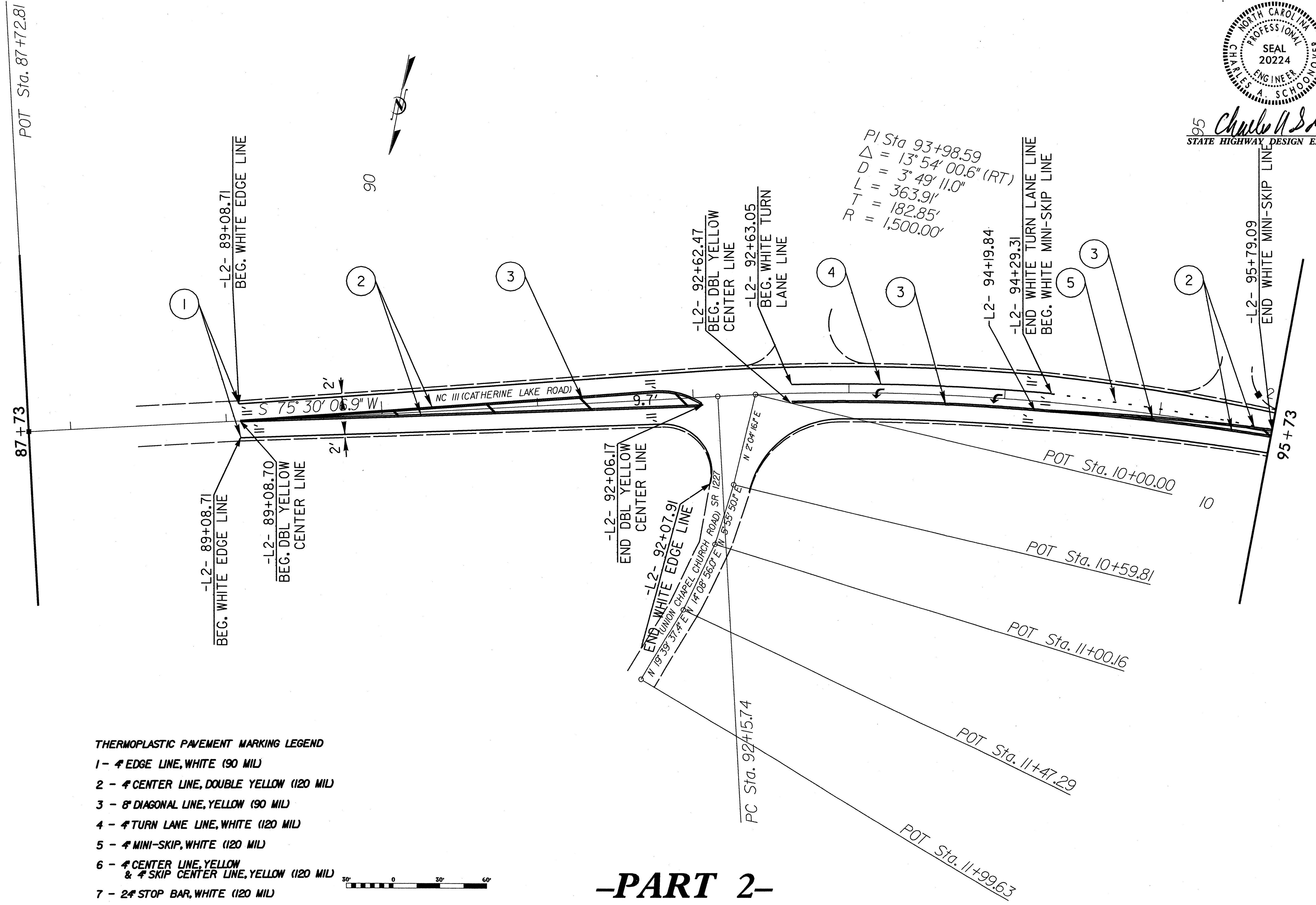


95 *Charles A. Schoonover* 1-25-10
STATE HIGHWAY DESIGN ENGINEER P.E.

PI Sta 93+98.59
 $\Delta = 13^\circ 54' 00.6''$ (RT)
 $D = 3^\circ 49' 11.0''$
 $L = 363.91'$
 $T = 182.85'$
 $R = 1,500.00'$



- THERMOPLASTIC PAVEMENT MARKING LEGEND**
- 1 - 4" EDGE LINE, WHITE (90 MIL)
 - 2 - 4" CENTER LINE, DOUBLE YELLOW (120 MIL)
 - 3 - 8" DIAGONAL LINE, YELLOW (90 MIL)
 - 4 - 4" TURN LANE LINE, WHITE (120 MIL)
 - 5 - 4" MINI-SKIP, WHITE (120 MIL)
 - 6 - 4" CENTER LINE, YELLOW & 4" SKIP CENTER LINE, YELLOW (120 MIL)
 - 7 - 2" STOP BAR, WHITE (120 MIL)

-PART 2-

8/17/99
 REVISIONS
 05-JAN-2006 08:23:01 ONSLOR\ONSLOR\ROADS.P.L\CC\CC\CATHERINE LAKE ONLY\YCL-TC_PSH-4.dgn
 05-JAN-2006 08:23:01 ONSLOR\ONSLOR\ROADS.P.L\CC\CC\CATHERINE LAKE ONLY\YCL-TC_PSH-4.dgn

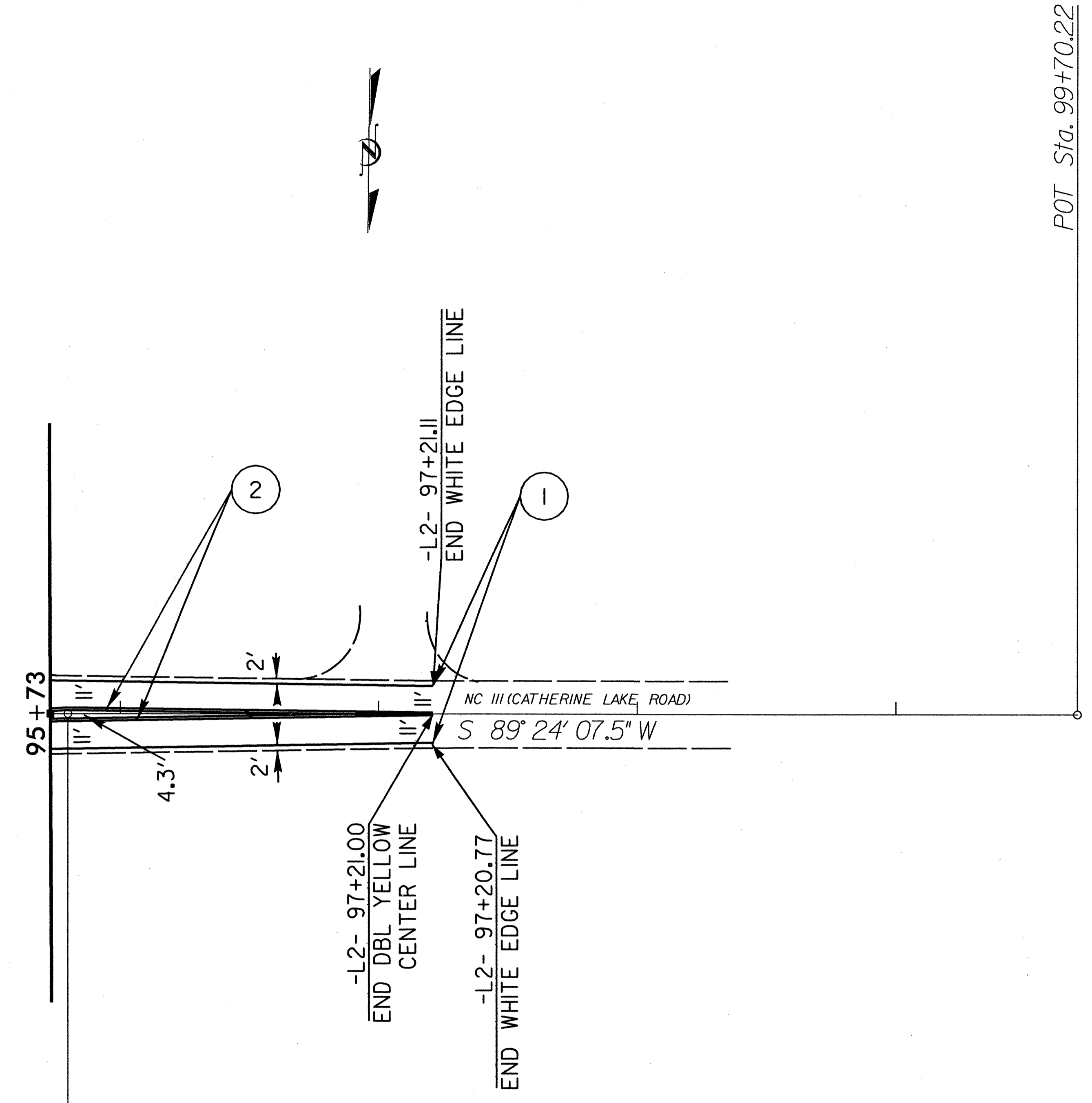


Charles A. Schoonover 1-25-10
STATE HIGHWAY DESIGN ENGINEER P.E.

8/17/99

REVISIONS

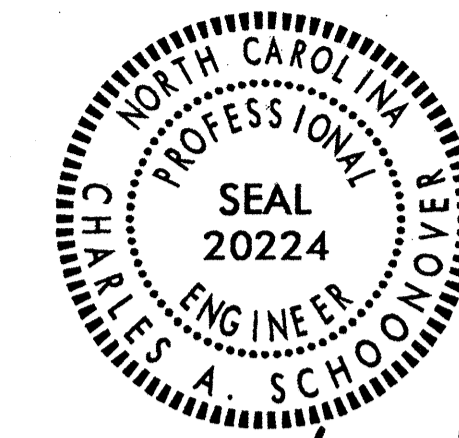
25-MAN-200 (024)
REVISIONS
ONSLDOW ROADS.R.CL CC-0C\CATHERINE LAKE ONLY\CL.TC-PSH.5.dgn



- THERMOPLASTIC PAVEMENT MARKING LEGEND**
- 1 - 4" EDGE LINE, WHITE (90 MIL)
 - 2 - 4" CENTER LINE, DOUBLE YELLOW (120 MIL)
 - 3 - 8" DIAGONAL LINE, YELLOW (90 MIL)
 - 4 - 4" TURN LANE LINE, WHITE (120 MIL)
 - 5 - 4" MINI-SKIP, WHITE (120 MIL)
 - 6 - 4" CENTER LINE, YELLOW & 4" SKIP CENTER LINE, YELLOW (120 MIL)
 - 7 - 24" STOP BAR, WHITE (120 MIL)

-PART 2-





Charles A. Schoonover P.E.
STATE HIGHWAY DESIGN ENGINEER

8/17/99

REVISIONS

25-JAN-2006 09:30 ONSLOW FOUR ON SLOW ROADS-R.C.L. CC.CC\CATHERINE LAKE ONLY CL.TC.PSH.7.dgn
RE: VADY DUNE

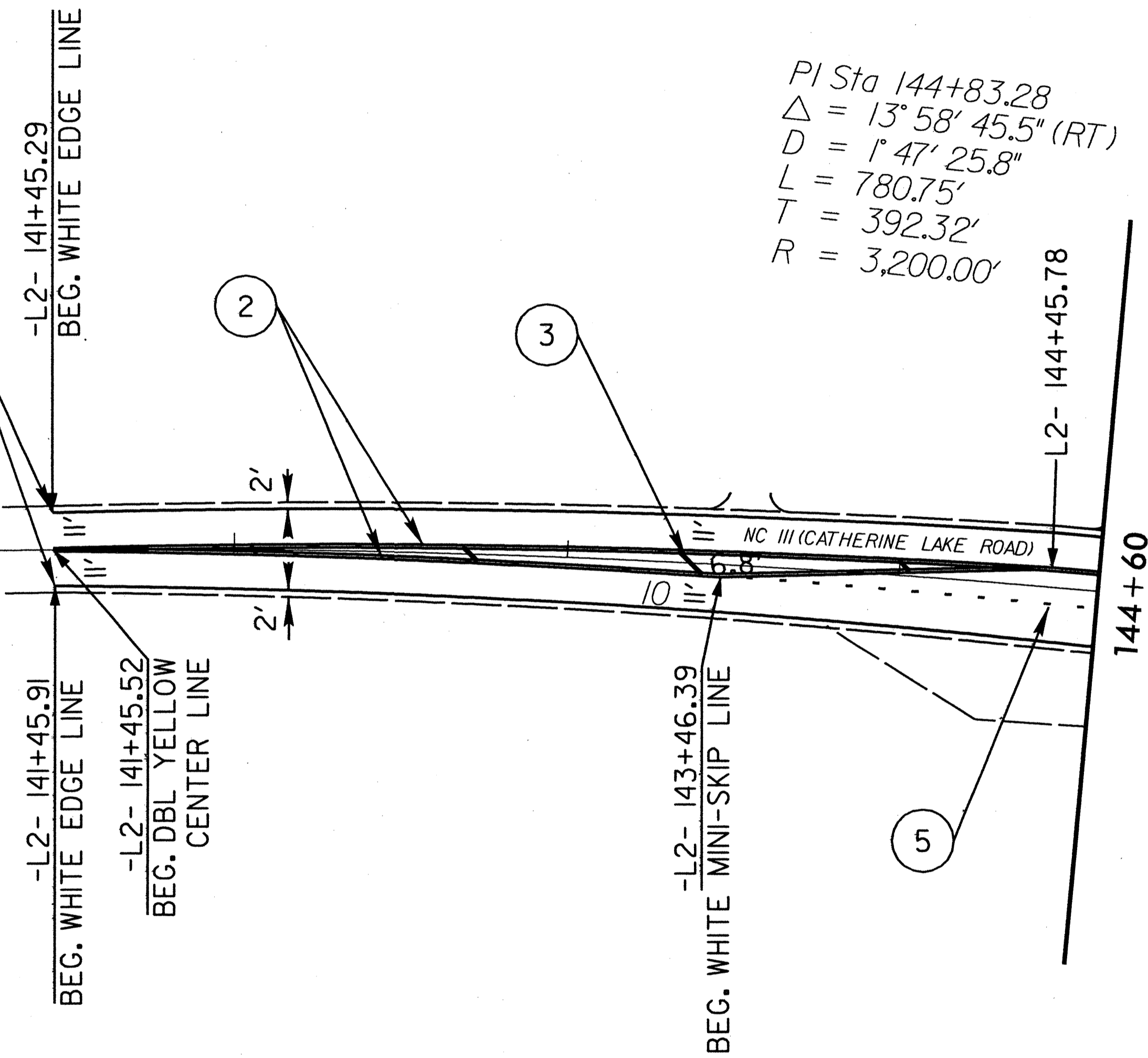
POT Sta. 136+60.02

136+60 Ext. -0.00

S 82° 45' 48.4" W

140

PC Sta. 140+90.96

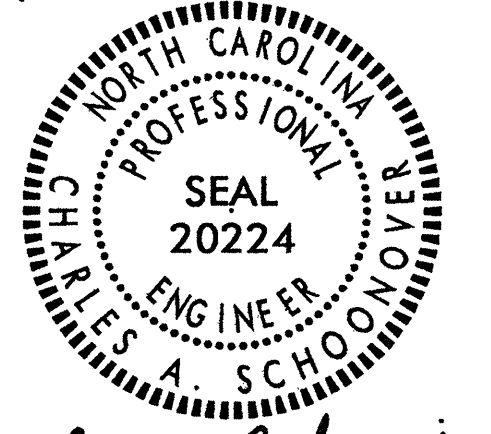


THERMOPLASTIC PAVEMENT MARKING LEGEND

- 1 - 4 EDGE LINE, WHITE (90 MIL)
- 2 - 4 CENTER LINE, DOUBLE YELLOW (120 MIL)
- 3 - 8" DIAGONAL LINE, YELLOW (90 MIL)
- 4 - 4 TURN LANE LINE, WHITE (120 MIL)
- 5 - 4 MINI-SKIP, WHITE (120 MIL)
- 6 - 4 CENTER LINE, YELLOW & 4 SKIP CENTER LINE, YELLOW (120 MIL)
- 7 - 24" STOP BAR, WHITE (120 MIL)



-PART 2-

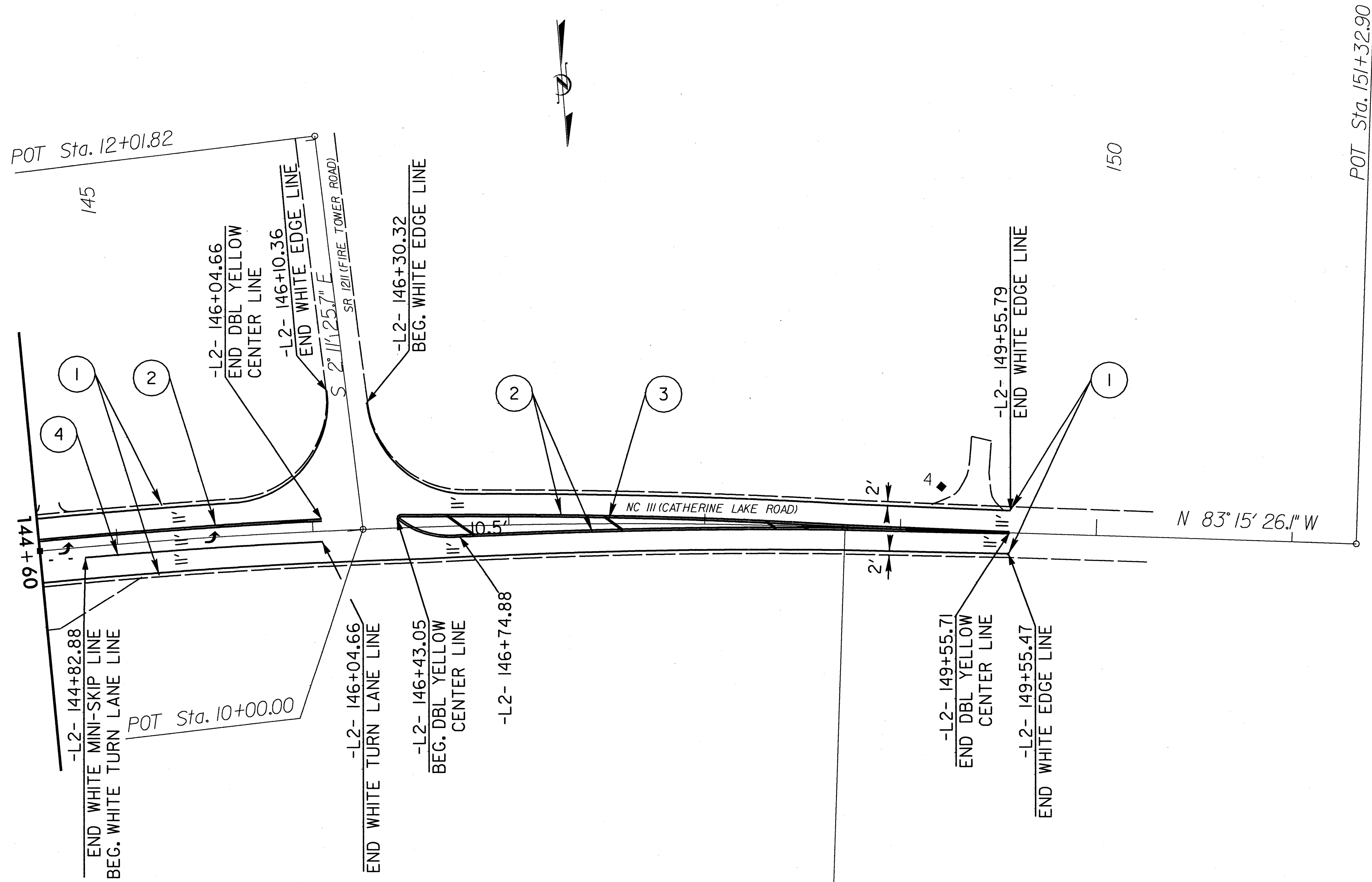


Charles A. Schoonover 1-25-10
STATE HIGHWAY DESIGN ENGINEER

8/17/99

REVISIONS

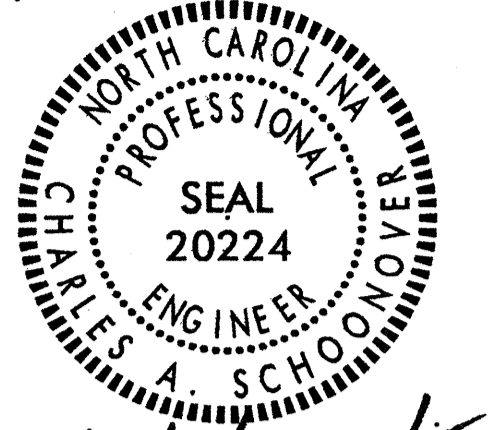
25-JAN-2010 10:25
R:\BY\DOE\ONSLOW\FOUR ONSLOW ROADS.R.CL\CC\OC\CATHERINE LAKE ONLY.VL.TC.PSH_6.dgn



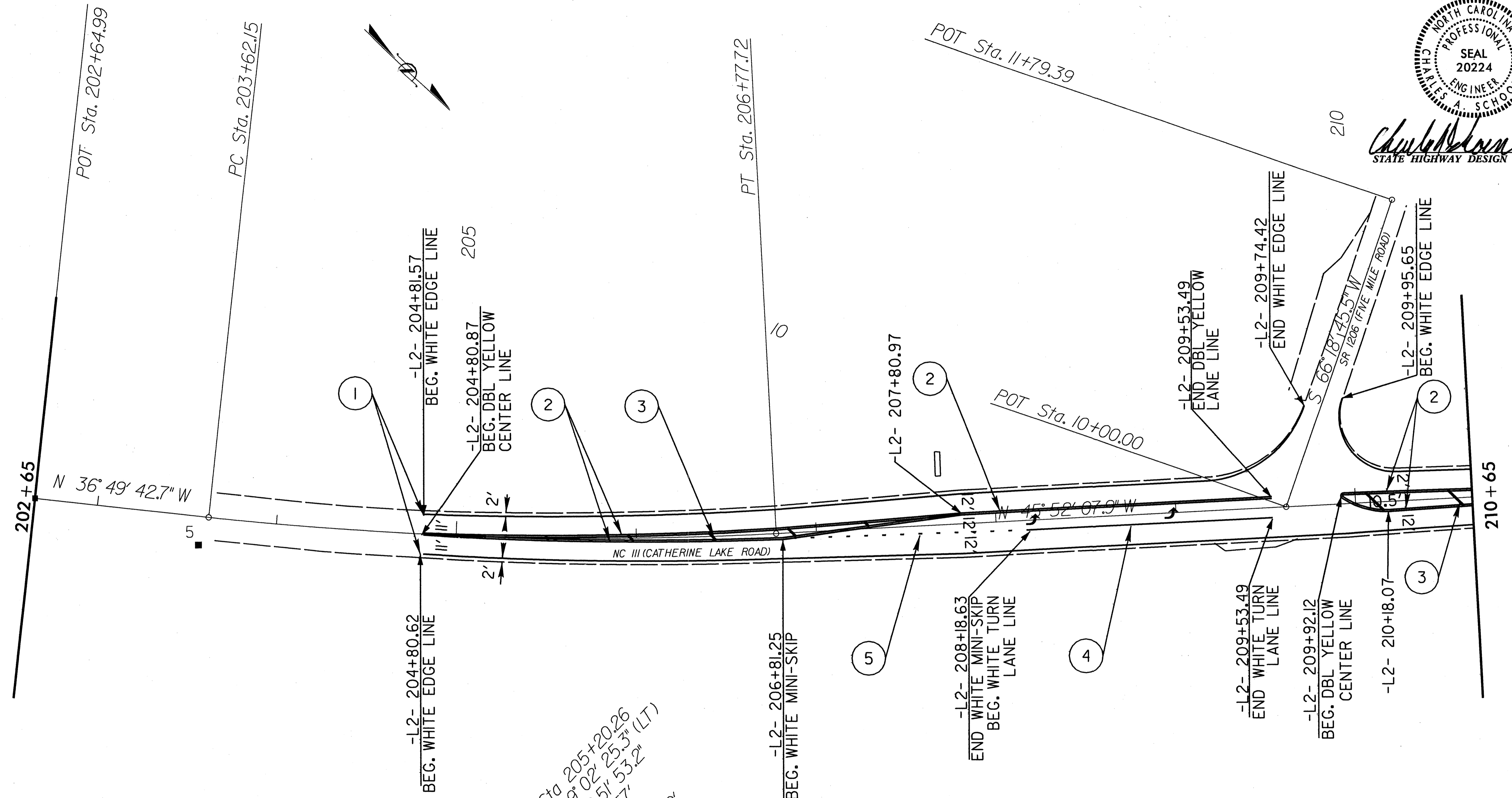
- THERMOPLASTIC PAVEMENT MARKING LEGEND**
- 1 - 4" EDGE LINE, WHITE (90 MIL)
 - 2 - 4" CENTER LINE, DOUBLE YELLOW (120 MIL)
 - 3 - 8" DIAGONAL LINE, YELLOW (90 MIL)
 - 4 - 4" TURN LANE LINE, WHITE (120 MIL)
 - 5 - 4" MINI-SKIP, WHITE (120 MIL)
 - 6 - 4" CENTER LINE, YELLOW & 4" SKIP CENTER LINE, YELLOW (120 MIL)
 - 7 - 24" STOP BAR, WHITE (120 MIL)



-PART 2-



Charles A. Schoonover
STATE HIGHWAY DESIGN ENGINEER



- THERMOPLASTIC PAVEMENT MARKING LEGEND**
- 1 - 4" EDGE LINE, WHITE (90 MIL)
 - 2 - 4" CENTER LINE, DOUBLE YELLOW (120 MIL)
 - 3 - 8" DIAGONAL LINE, YELLOW (90 MIL)
 - 4 - 4" TURN LANE LINE, WHITE (120 MIL)
 - 5 - 4" MINI-SKIP, WHITE (120 MIL)
 - 6 - 4" CENTER LINE, YELLOW & 4" SKIP CENTER LINE, YELLOW (120 MIL)
 - 7 - 24" STOP BAR, WHITE (120 MIL)

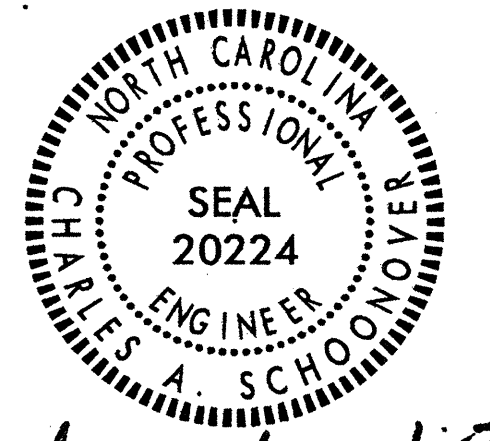
PI Sta 205+20.26
 $\Delta D = 9' 02" 25.31$
 $L = 2' 51" 25.31$
 $T = 315.57' 53.31$ (LT)
 $R = 158.11'$
 $R = 2,000.00'$



-PART 2-

8/17/99
 REVISIONS
 25-JAN-2010 10:31
 RY-ADY-DONE LONSLOW-FOUR ONSLOW ROADS-R.CL.CC-00\CATHERINE LAKE ONLY\vol.LTC-psh-8.dgn

DIVISION OF HIGHWAYS
STATE OF NORTH CAROLINA

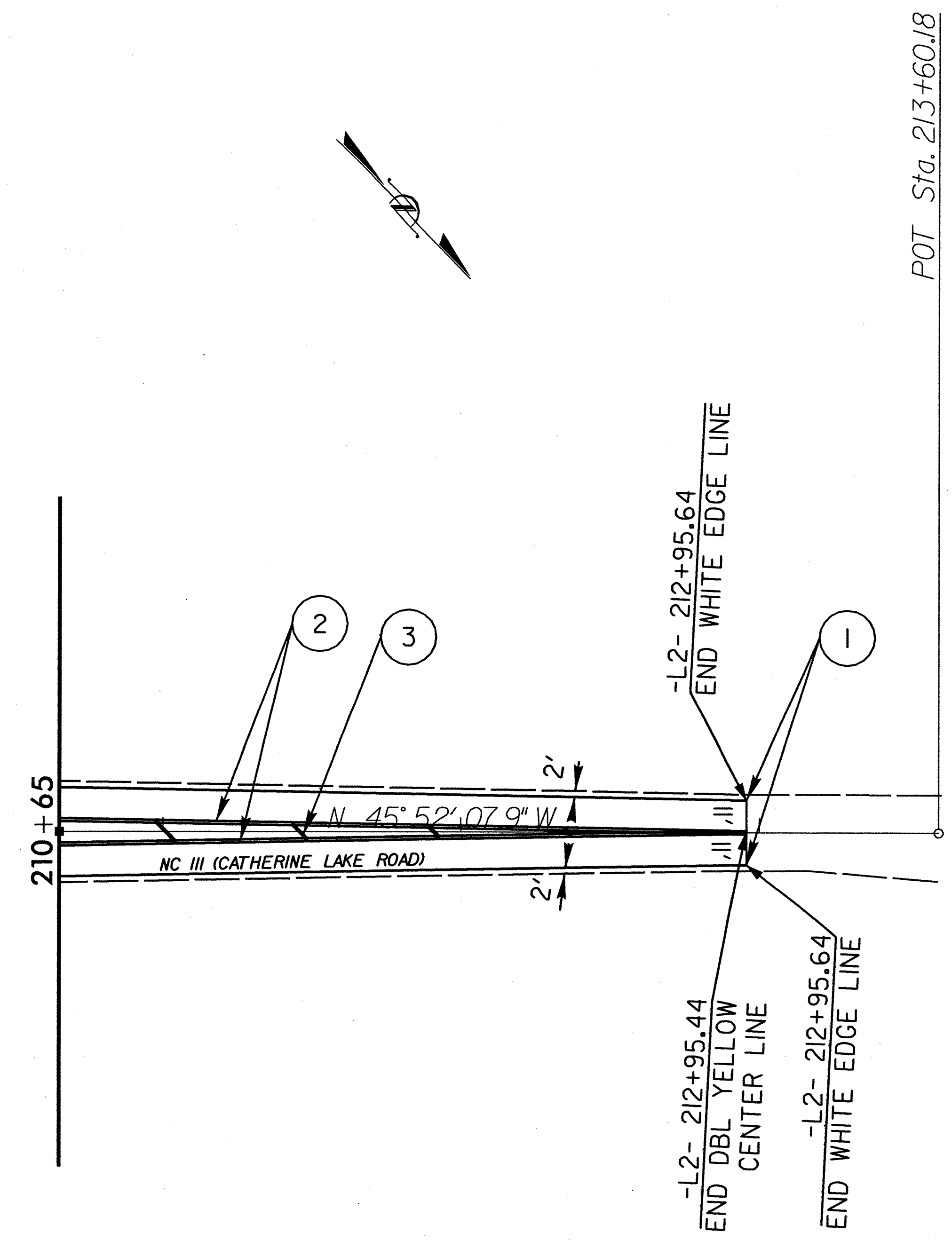


Charles A. Schooner 1-25-10
P.E.
STATE HIGHWAY DESIGN ENGINEER

8/17/99

REVISIONS

25-JAN-2000 09:32 R:\BY\DOVE\ON_SLOW\ROADS\R.CL\CC\CC\CATHERINE LAKE ONLY\CL.TC.PSH_9.dgn



POT Sta. 213+60.18

- THERMOPLASTIC PAVEMENT MARKING LEGEND**
- 1 - 4" EDGE LINE, WHITE (90 MIL)
 - 2 - 4" CENTER LINE, DOUBLE YELLOW (120 MIL)
 - 3 - 8" DIAGONAL LINE, YELLOW (90 MIL)
 - 4 - 4" TURN LANE LINE, WHITE (120 MIL)
 - 5 - 4" MINI-SKIP, WHITE (120 MIL)
 - 6 - 4" CENTER LINE, YELLOW & 4" SKIP CENTER LINE, YELLOW (120 MIL)
 - 7 - 24" STOP BAR, WHITE (120 MIL)



-PART 2-