

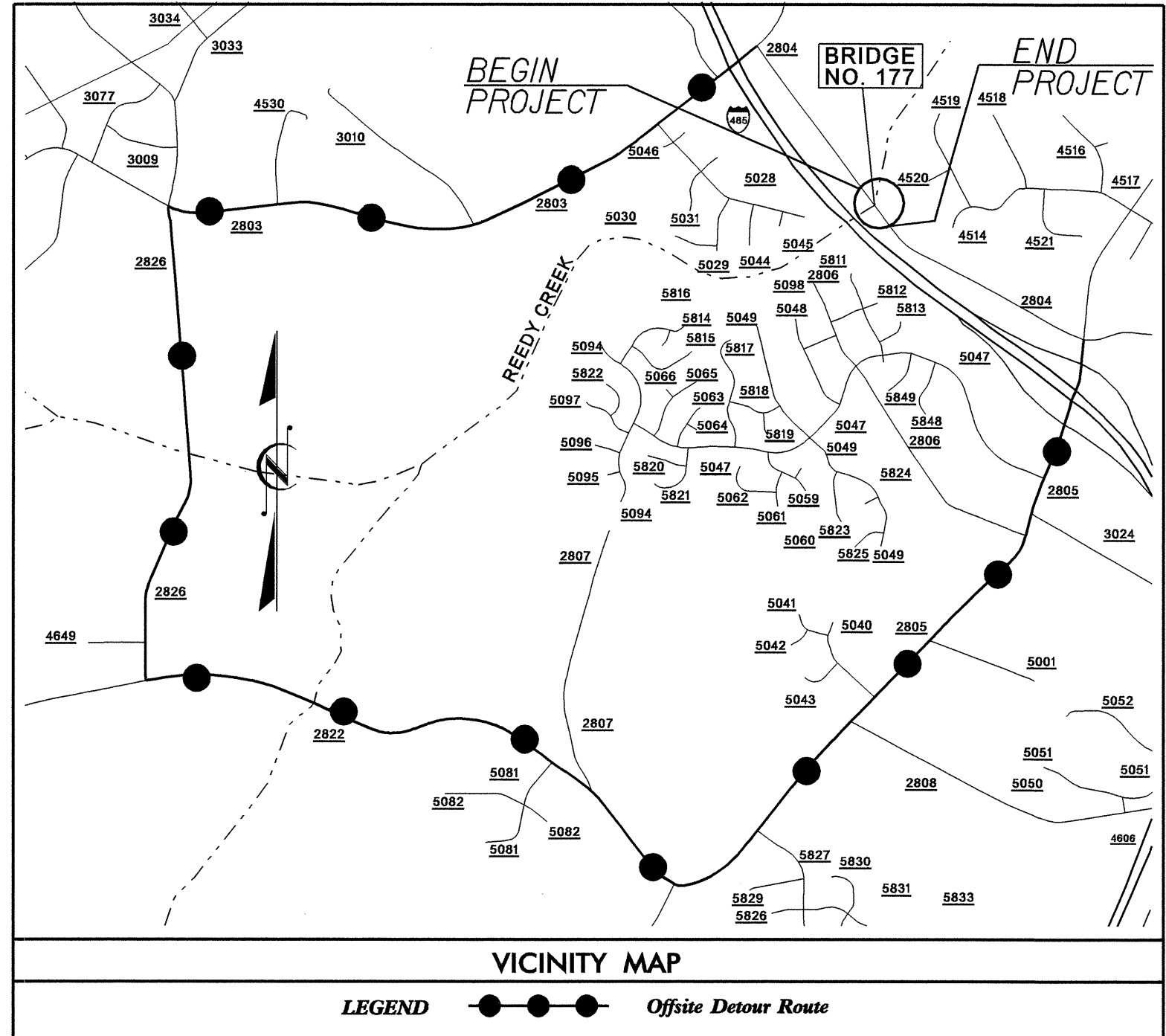
T.I.P. NO.	SHEET NO.
B-4580	UO-1

STATE OF NORTH CAROLINA
DIVISION OF HIGHWAYS

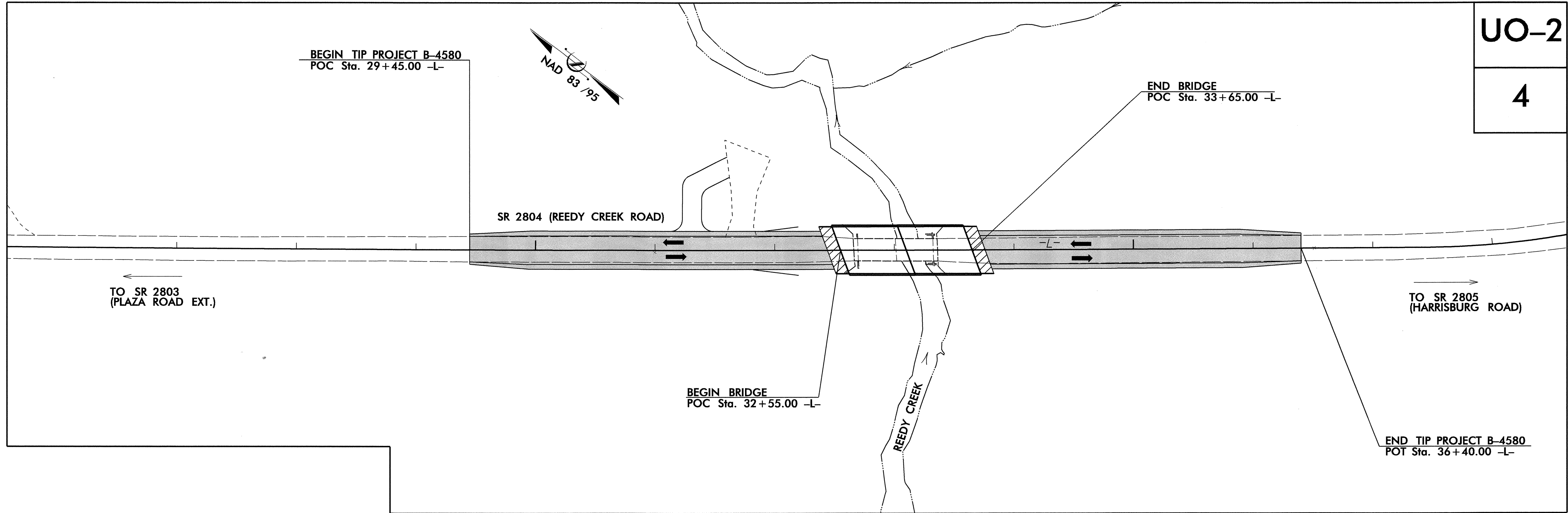
**UTILITIES BY OTHERS PLANS
MECKLENBURG COUNTY**

LOCATION: BRIDGE NO. 177 OVER REEDY CREEK ON SR 2804 (REEDY CREEK ROAD)

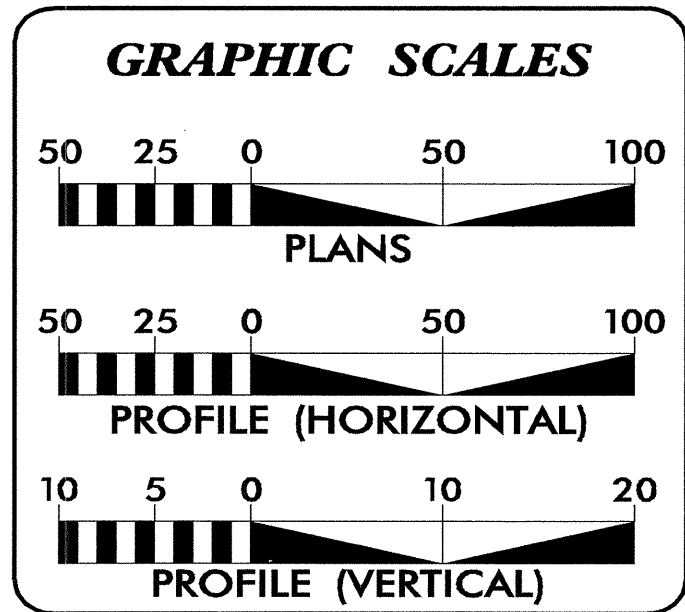
TYPE OF WORK: POWER, TELEPHONE, GAS



TIP PROJECT: B-4580



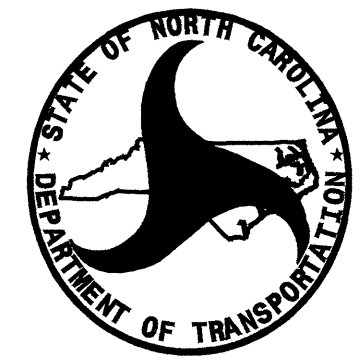
UO-2
4



INDEX OF SHEETS

SHEET NO.	DESCRIPTION
UO-1	TITLE SHEET
UO-2	UTILITIES BY OTHERS PLAN SHEETS

- UTILITY OWNERS ON PROJECT**
- (1) Power - Duke Energy Corporation
 - (2) Telephone - AT&T
 - (3) Gas - Piedmont Natural Gas Company
 - (4) Sewer - Utilities, Inc.



PREPARED IN THE OFFICE OF:
**DIVISION OF HIGHWAYS
UTILITIES ENGINEERING SECTION**

1591 MAIL SERVICES CENTER
RALEIGH NC 27699-1591
PHONE (919) 250-4128
FAX (919) 250-4151

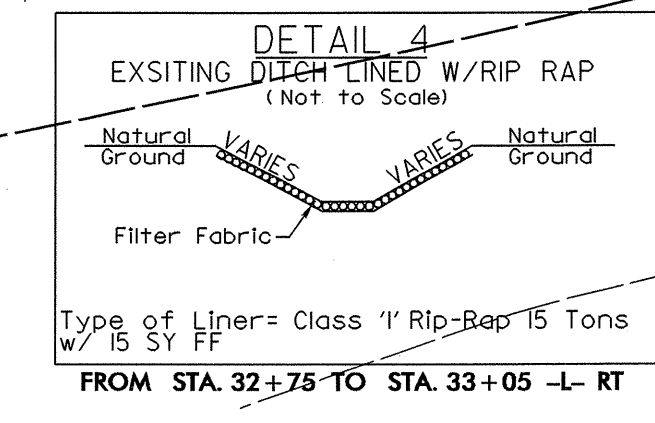
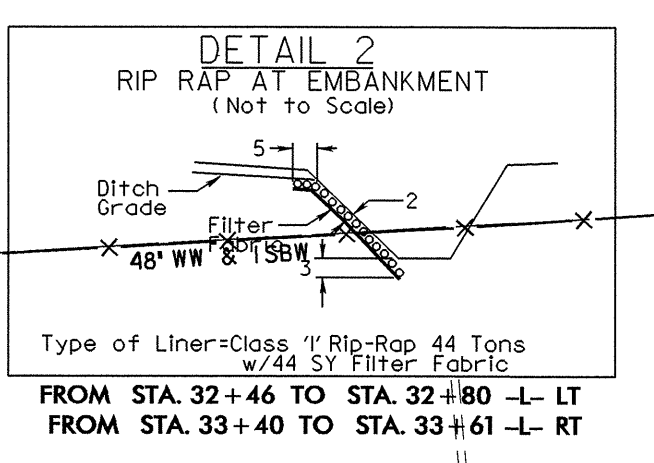
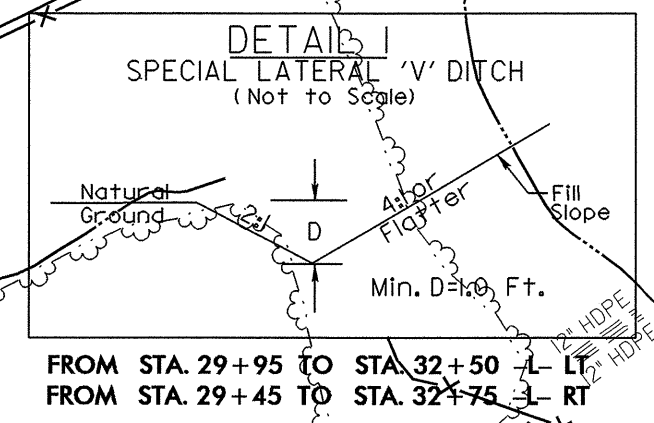
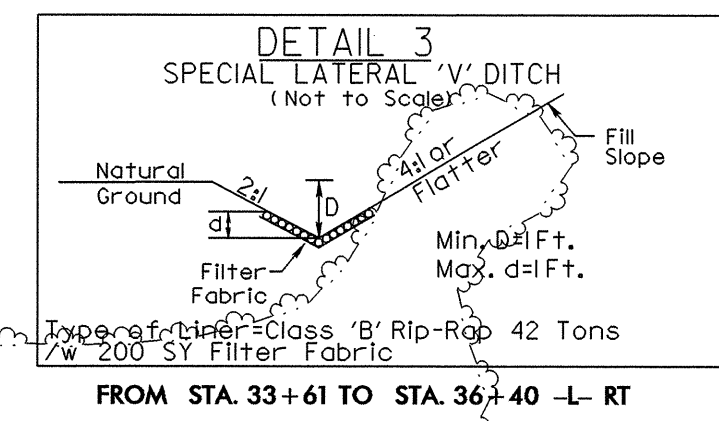
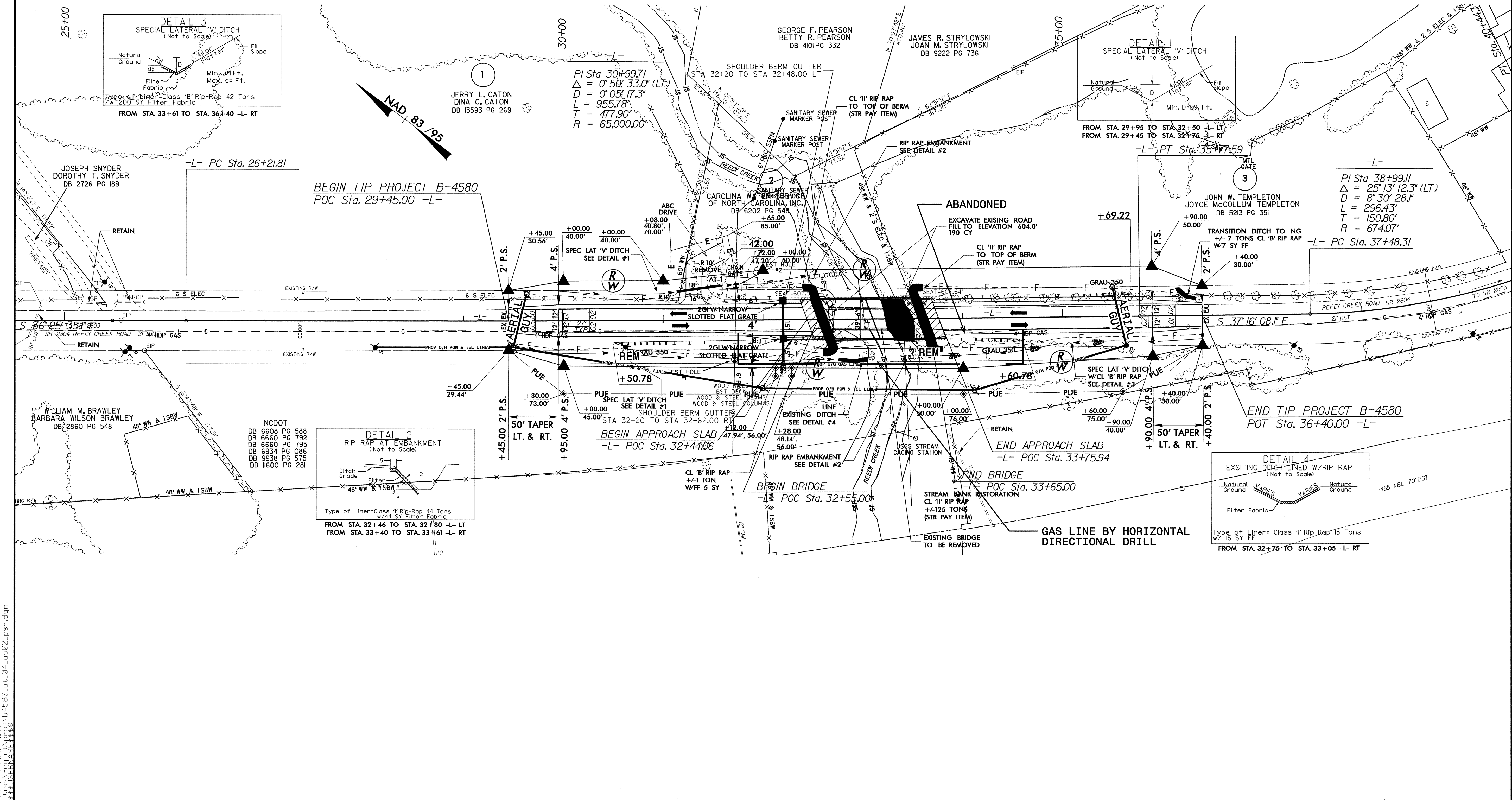
Roger Worthington, P.E. UTILITIES SECTION ENGINEER
Carl Barclay, P.E. UTILITIES SQUAD LEADER PROJECT ENGINEER
Bo Hemphill, P.E. UTILITIES PROJECT DESIGNER

07-JAN-2010 15:56 r:\utilities\rdy-ut\proj\b4580-ut-ttitle-uol_psh.dgn \$\$\$USERNAME\$\$\$

UTILITIES BY OTHERS

NOTE:
ALL PROPOSED UTILITY WORK
SHOWN ON THIS SHEET WILL
BE DONE BY OTHERS

5/14/99



WILLIAM M. BRAWLEY
BARBARA WILSON BRAWLEY
DB 2860 PG 548

NC DOT
DB 6608 PG 588
DB 6660 PG 792
DB 6660 PG 795
DB 6934 PG 086
DB 9938 PG 575
DB 11600 PG 281

PI Sta 30+99.71
 $\Delta = 0^{\circ} 58' 33.0" (LT)$
 $D = 0^{\circ} 05' 17.3"$
 $L = 955.78'$
 $T = 477.90'$
 $R = 65,000.00'$

PI Sta 38+99.11
 $\Delta = 25^{\circ} 13' 12.3" (LT)$
 $D = 8^{\circ} 30' 28.1"$
 $L = 296.43'$
 $T = 150.80'$
 $R = 674.07'$

07-JAN-2010 15:57
b-4580-ut-04-uo02-psh.dgn