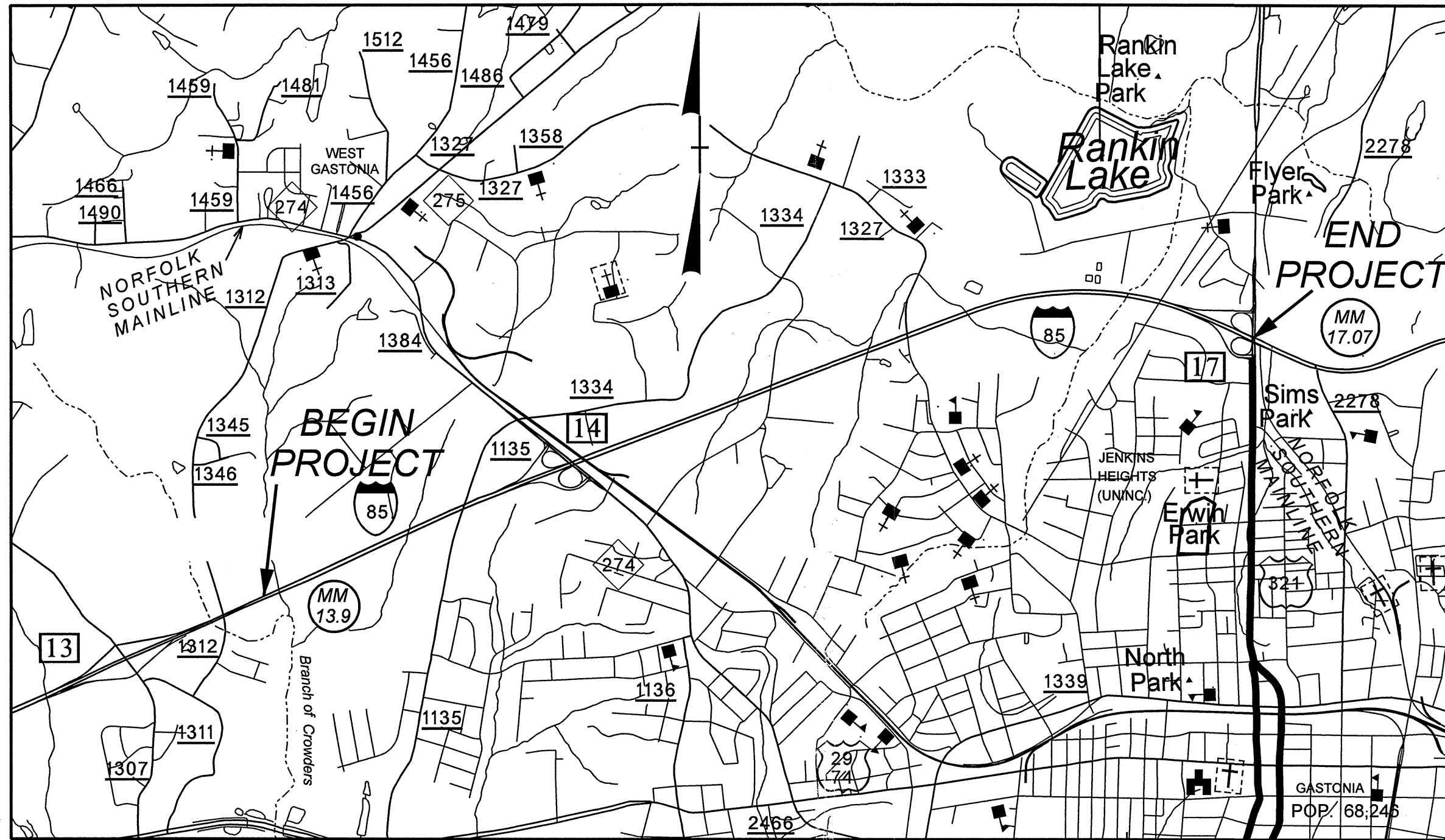
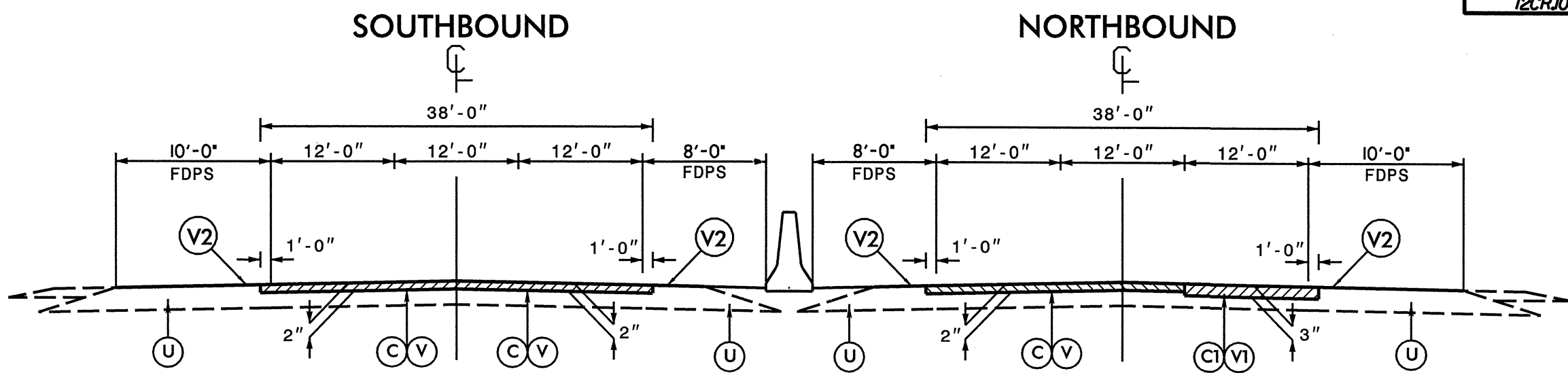


# PROJECT 12CR.10363.1 GASTON COUNTY

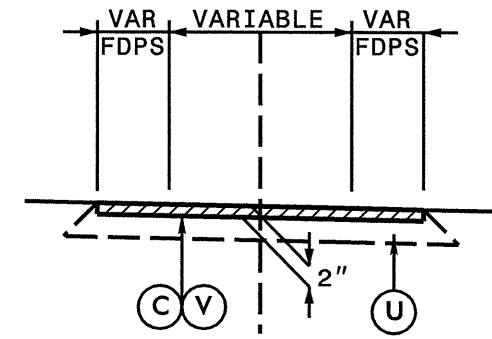
# SHEET 1





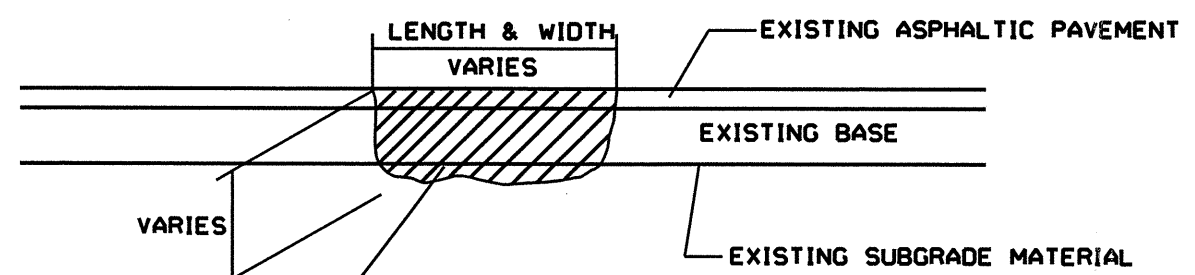
**TYPICAL SECTION NO. 1**

USE TYPICAL SECTION NO. 1 FROM MM 13.9 TO CONCRETE BRIDGES OVER US 321



**TYPICAL SECTION NO. 2**

USE TYPICAL SECTION NO. 2 FOR RAMP, LOOPS, ACCELERATION AND DECELERATION LANES EXCEPT SOUTHBOUND EXIT LOOP AT US 321



MILL EXISTING ASPHALT PAVEMENT AND REMOVE EXISTING LOOSE BASE AND/OR SUBGRADE MATERIAL AND REPLACE WITH ACBC OR ACSC AS DIRECTED BY THE ENGINEER

**PATCHING EXISTING PAVEMENT**

PAVEMENT SCHEDULE	
C	PROP. APPROX. 2" ASPHALT CONCRETE SURFACE COURSE, TYPE S9.5D, AT AN AVERAGE RATE OF 224 LBS. PER SQ. YD.
C1	PROP. APPROX. 3" ASPHALT CONCRETE SURFACE COURSE, TYPE S9.5D, AT AN AVERAGE RATE OF 168 LBS. PER SQ. YD. IN EACH OF TWO LIFTS
U	EXISTING PAVEMENT.
V	MILLING BITUMINOUS PAVEMENT. 2" DEPTH.
V1	MILLING BITUMINOUS PAVEMENT. 3" DEPTH.
V2	MILLED RUMBLE STRIPS

PROJECT NO.	SHEET NO.	TOTAL NO.
12CR.10363.1	3	

## SUMMARY OF QUANTITIES

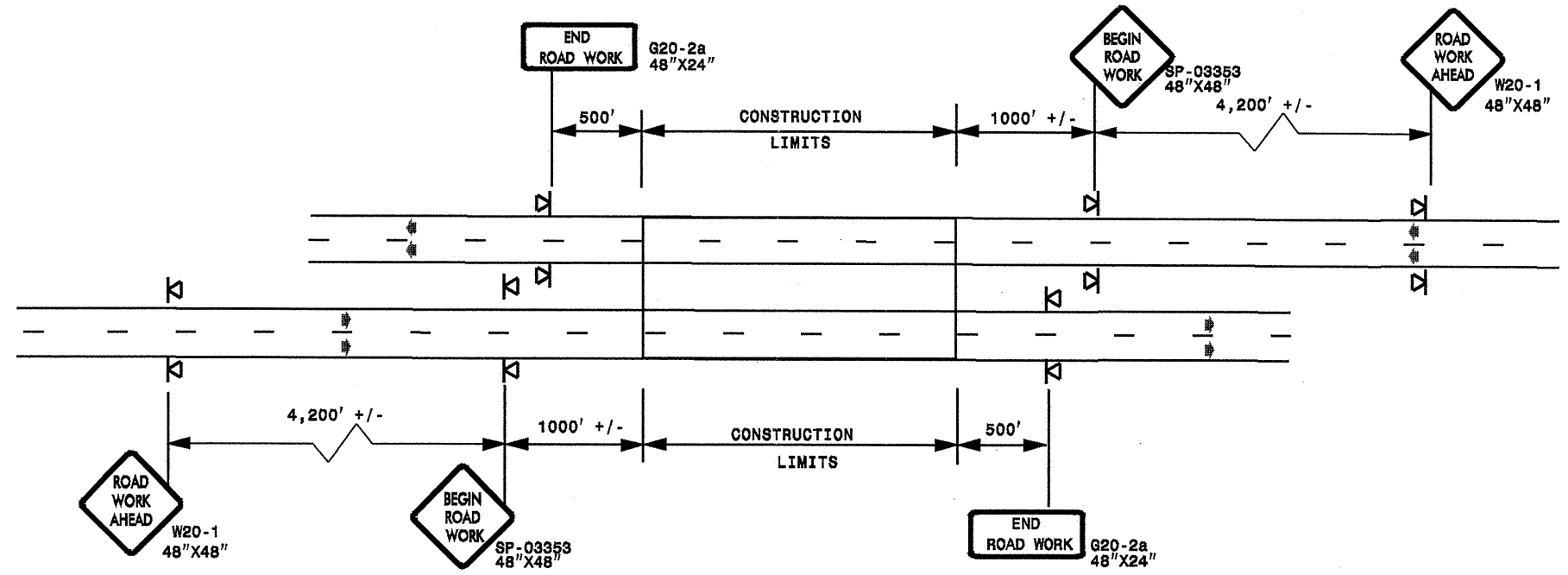
PROJECT NO	COUNTY	MAP NO	ROUTE	DESCRIPTION	TYP NO	FINAL SURFACE TESTING REQUIRED	LENGTH MI	WIDTH FT	2" MILLING SY	3" MILLING SY	SURFACE COURSE, S9.5D TONS	PG 76-22 PLANT MIX TONS	PATCHING EXISTING PAVEMENT TONS	MILLED RUMBLE STRIPS (ASPHALT CEMENT CONCRETE) LF	PORTABLE LIGHTING LS
12CR.10363.1	Gaston	1	I-85 NB & SB	From MP 13.9 to MP 17.07 (US 321 Bridges)	1	NO	3.17	38	147,590	24,180	20,630	1,135	2,000	66,960	1.00
<b>TOTAL FOR MAP NO. 1</b>							<b>3.17</b>		<b>147,590</b>	<b>24,180</b>	<b>20,630</b>	<b>1,135</b>	<b>2,000</b>	<b>66,960</b>	<b>1.00</b>
<b>TOTAL FOR PROJ NO. 12CR.10363.1</b>							<b>3.17</b>		<b>147,590</b>	<b>24,180</b>	<b>20,630</b>	<b>1,135</b>	<b>2,000</b>	<b>66,960</b>	<b>1.00</b>
<b>GRAND TOTAL</b>							<b>3.17</b>		<b>147,590</b>	<b>24,180</b>	<b>20,630</b>	<b>1,135</b>	<b>2,000</b>	<b>66,960</b>	<b>1.00</b>

## THERMOPLASTIC AND PAINT QUANTITIES

PROJECT NO	COUNTY	MAP NO	ROUTE	DESCRIPTION	4415000000-N	4420000000-N	4430000000-N	4480000000-N	4847100000-E		4847120000-E	4710000000-E	4725000000-N			4905000000-N
					FLASHING ARROW PANELS, TYPE C EA	CHANGEABLE MESSAGE SIGN EA	DRUMS EA	TMIA EA	6" WHITE POLYUREA (HIGHLY REFLECT.) LF	6" YELLOW POLYUREA (HIGHLY REFLECT.) LF	12" WHITE POLYUREA (HIGHLY REFLECT.) LF	24" WHITE THERMO. PAVEMENT MARKINGS LF	THERMO. STR ARROW EA	THERMO. LT ARROW EA	THERMO. RT ARROW EA	SNOW PLOWABLE MARKERS EA
12CR.10363.1	Gaston	1	I-85 NB & SB	From MP 13.9 to MP 17.07 (US 321 Bridges)	1	1	300	1	58,465	39,480	2,900	60	11	7	3	375
<b>TOTAL FOR MAP NO. 1</b>					<b>1</b>	<b>1</b>	<b>300</b>	<b>1</b>	<b>58,465</b>	<b>39,480</b>	<b>2,900</b>	<b>60</b>	<b>11</b>	<b>7</b>	<b>3</b>	<b>375</b>
<b>TOTAL FOR PROJ NO. 12CR.10363.1</b>					<b>1</b>	<b>1</b>	<b>300</b>	<b>1</b>	<b>58,465</b>	<b>39,480</b>	<b>2,900</b>	<b>60</b>	<b>11</b>	<b>7</b>	<b>3</b>	<b>375</b>
<b>GRAND TOTAL</b>					<b>1</b>	<b>1</b>	<b>300</b>	<b>1</b>	<b>58,465</b>	<b>39,480</b>	<b>2,900</b>	<b>60</b>	<b>11</b>	<b>7</b>	<b>3</b>	<b>375</b>

**ADVANCE WORK ZONE WARNING SIGNING FOR FREEWAYS (4 LANES OR GREATER)**

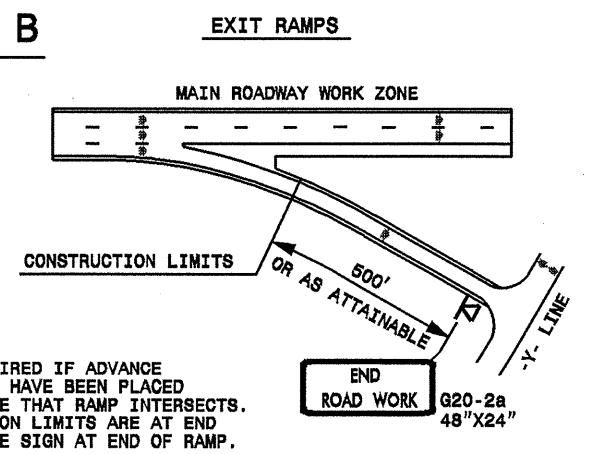
**DETAIL A**



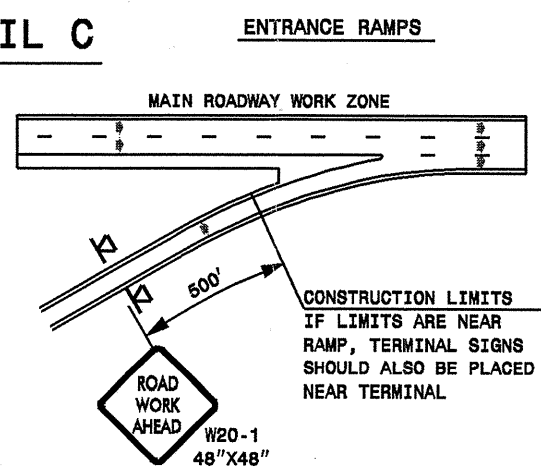
STATE OF NORTH CAROLINA  
DEPT. OF TRANSPORTATION  
DIVISION OF HIGHWAYS  
RALEIGH, N.C.

**ROADWAYS INTERSECTING ALONG FREEWAY WORK ZONE (Y-LINES)**

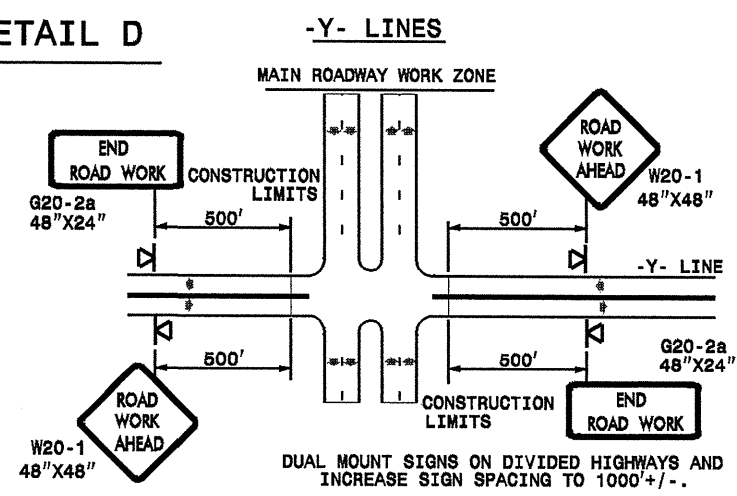
**DETAIL B**



**DETAIL C**



**DETAIL D**



**DETAIL DRAWING  
FOR FREEWAYS  
WORK ZONE WARNING SIGNS  
(SHORT-DURATION LANE CLOSURES)**

**GENERAL NOTES**

- USE FLUORESCENT ORANGE SHEETING (TYPE VII OR HIGHER) ON ALL ADVANCE WORK ZONE SIGNS.
- DO NOT INSTALL ADVANCE WARNING SIGNS MORE THAN 3 DAYS PRIOR TO BEGINNING OF WORK.
- ALL SIGN SPACING DIMENSIONS ARE APPROXIMATE, FIELD ADJUST AS NECESSARY OR AS DIRECTED.
- USE PORTABLE WORK ZONE SIGNS ONLY WITH PORTABLE WORK ZONE SIGN STANDS SPECIFICALLY DESIGNED FOR ONE ANOTHER. PORTABLE WORK ZONE SIGNS MAY BE ROLL UP OR APPROVED COMPOSITE.
- PROVIDE PORTABLE WORK ZONE SIGN STANDS, PORTABLE SIGNS AND SIGN SHEETING WHICH ARE LISTED ON THE NORTH CAROLINA DEPARTMENT OF TRANSPORTATION'S APPROVED PRODUCT LIST OR ACCEPTED AS TRAFFIC QUALIFIED BY THE TRAFFIC CONTROL UNIT.
- \*\* TWO-WAY UNDIVIDED ADVANCE WARNING SIGN CONFIGURATION MAY BE USED ON MULTI-LANE FACILITIES WHERE CONDITIONS LIMIT THE USE OF DUAL MOUNTED SIGNS AS DETERMINED BY THE ENGINEER.

**LEGEND**

◀ PORTABLE SIGN

➡ DIRECTION OF TRAFFIC FLOW

SHEET 1 OF 1

APPROVED: _____	DATE: _____	<p align="center"><b>DETAIL DRAWING FOR FREEWAYS WORK ZONE WARNING SIGNS</b></p>	<p align="center">REVISIONS</p>	
	SCALE: NONE		7-98	10/01
	DATE:	10-98	03/04	
	DWG. BY:	01/01	11/04	
	DESIGN BY:			
REVIEWED BY:				

16-FEB-2010 10:31 AM  
S:\Signaling\resurfacing\2010\Div12\C202571\2CR03631.Cad\1-85\C202571\_12CR03631\_freewaylanesgreatJuly2006\_porttable.dgn  
Desy Moore AT 12/23/2002