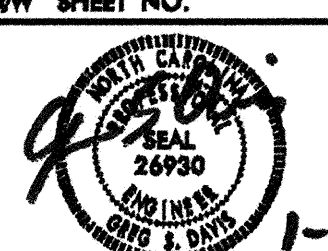
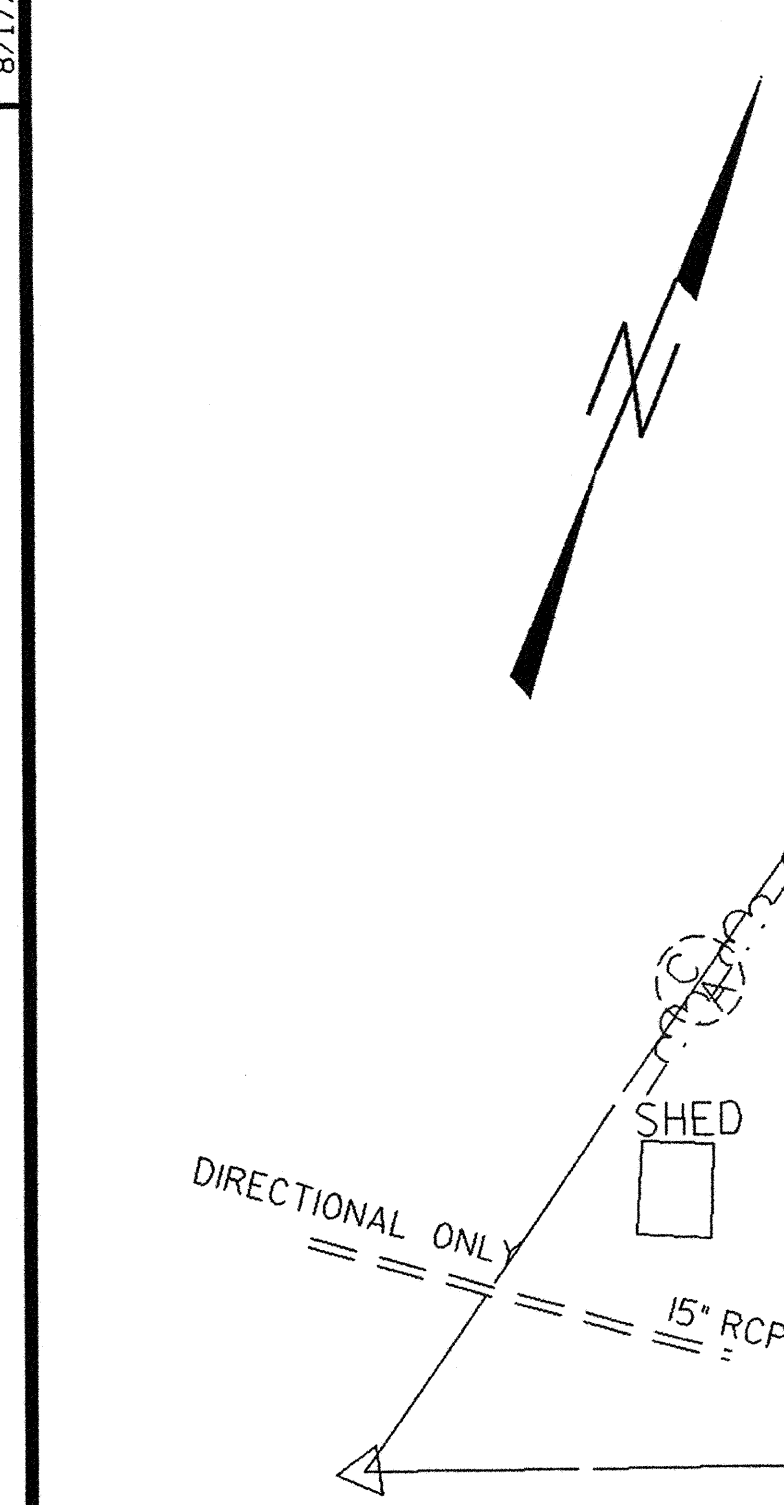
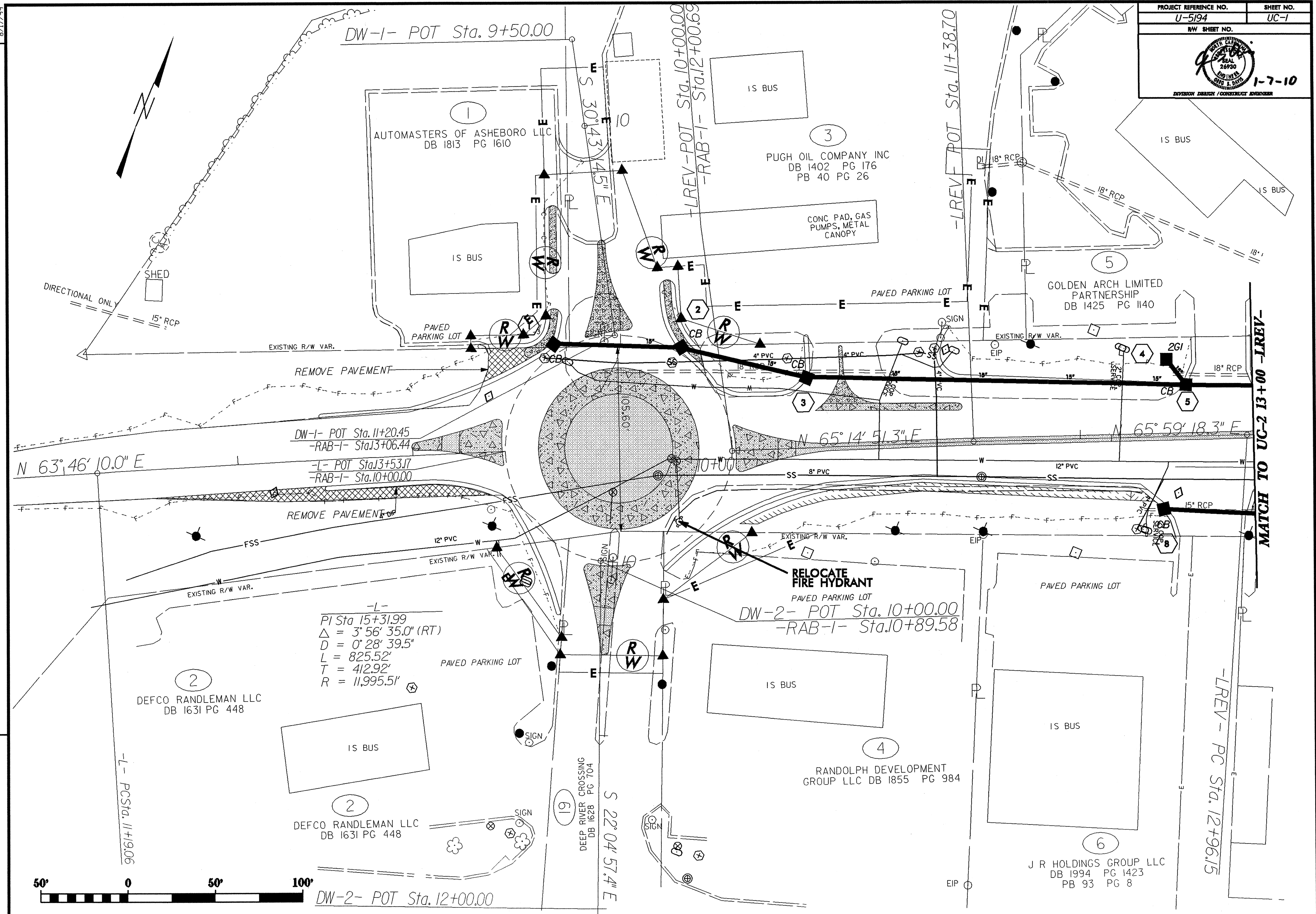


8/17/99

PROJECT REFERENCE NO. U-5194	SHEET NO. UC-1
RW SHEET NO.	
	
DIVISION DESIGN / CONSTRUCTION ENGINEER	



REVISIONS



-L-
 PI Sta 15+31.99
 $\Delta = 3^\circ 56' 35.0''$ (RT)
 $D = 0^\circ 28' 39.5''$
 $L = 825.52'$
 $T = 412.92'$
 $R = 11,995.51'$

RELOCATE
 FIRE HYDRANT
 PAVED PARKING LOT
 DW-2- POT Sta. 10+00.00
 -RAB-1- Sta. 10+89.58

MATCH TO UC-2 13+00 -LREV-

-LREV- PC Sta. 12+96.15

DW-1- POT Sta. 9+50.00

-LREV- POT Sta. 10+00.00
-RAB-1- Sta. 12+00.69

-LREV- POT Sta. 11+38.70

DW-1- POT Sta. 11+20.45
 -RAB-1- Sta. 13+06.44
 -L- POT Sta. 13+53.17
 -RAB-1- Sta. 10+00.00

-L- PC Sta. 11+19.06

DW-2- POT Sta. 12+00.00

DEEP RIVER CROSSING
DB 1628 PG 704
S 22° 04' 57.4" E

RANDOLPH DEVELOPMENT
GROUP LLC DB 1855 PG 984

J R HOLDINGS GROUP LLC
DB 1994 PG 1423
PB 93 PG 8

8/17/99

PROJECT REFERENCE NO. U-5194	SHEET NO. UC-2
RW SHEET NO.	
DIVISION: DRAINAGE / CONSTRUCTION ENGINEER	

-Y2A-
 PI Sta 12+77.91
 Δ = 50° 19' 11.2" (LT)
 D = 20° 39' 35.9"
 L = 243.56'
 T = 130.26'
 R = 277.33'

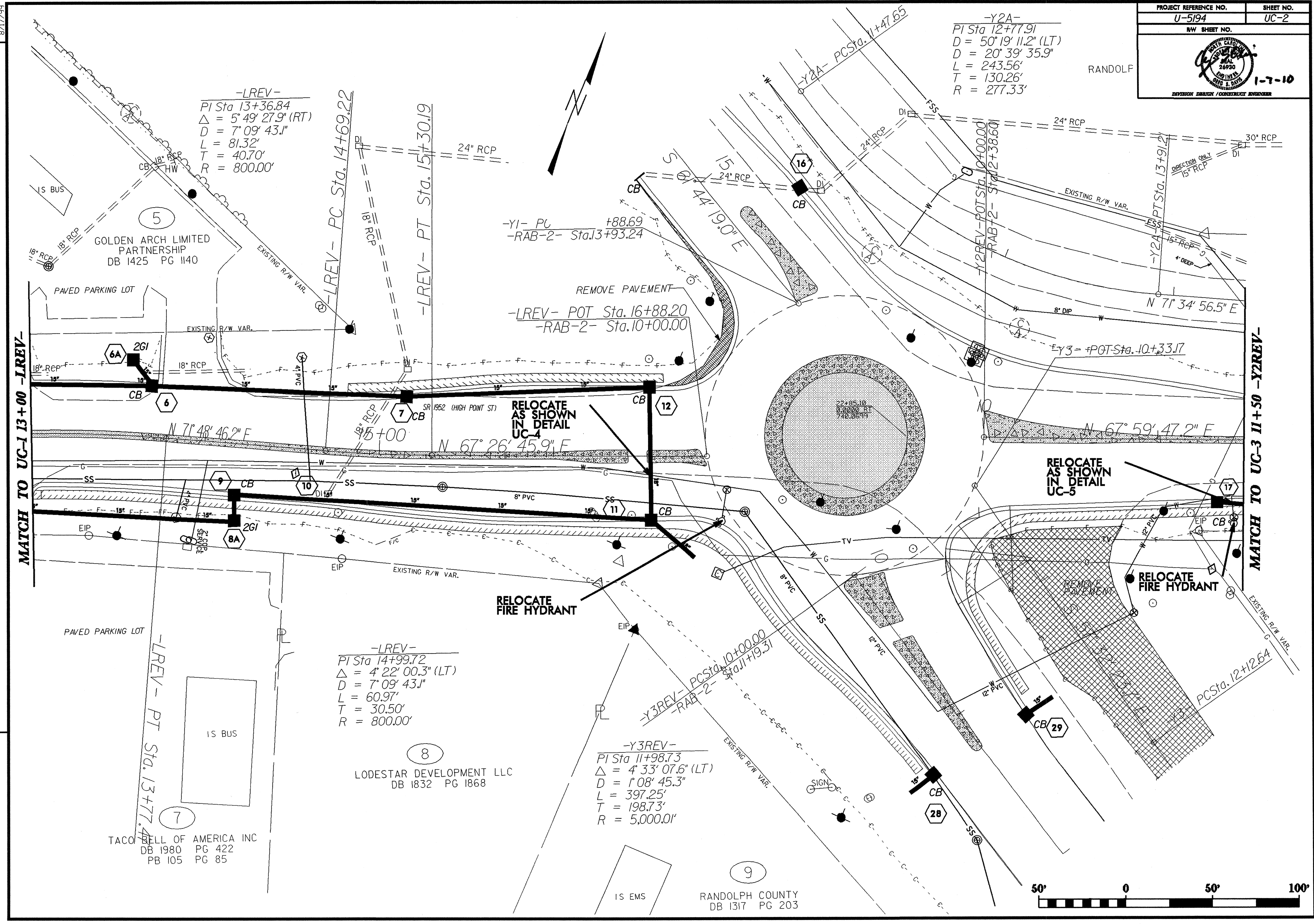
-LREV-
 PI Sta 13+36.84
 Δ = 5° 49' 27.9" (RT)
 D = 7° 09' 43.1"
 L = 81.32'
 T = 40.70'
 R = 800.00'

-LREV-
 PI Sta 14+99.72
 Δ = 4° 22' 00.3" (LT)
 D = 7° 09' 43.1"
 L = 60.97'
 T = 30.50'
 R = 800.00'

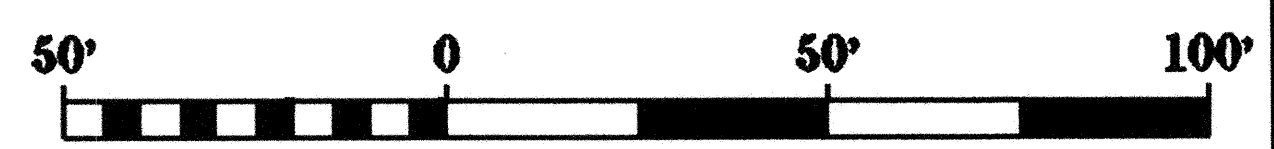
-Y3REV-
 PI Sta 11+98.73
 Δ = 4° 33' 07.6" (LT)
 D = 1° 08' 45.3"
 L = 397.25'
 T = 198.73'
 R = 5,000.01'

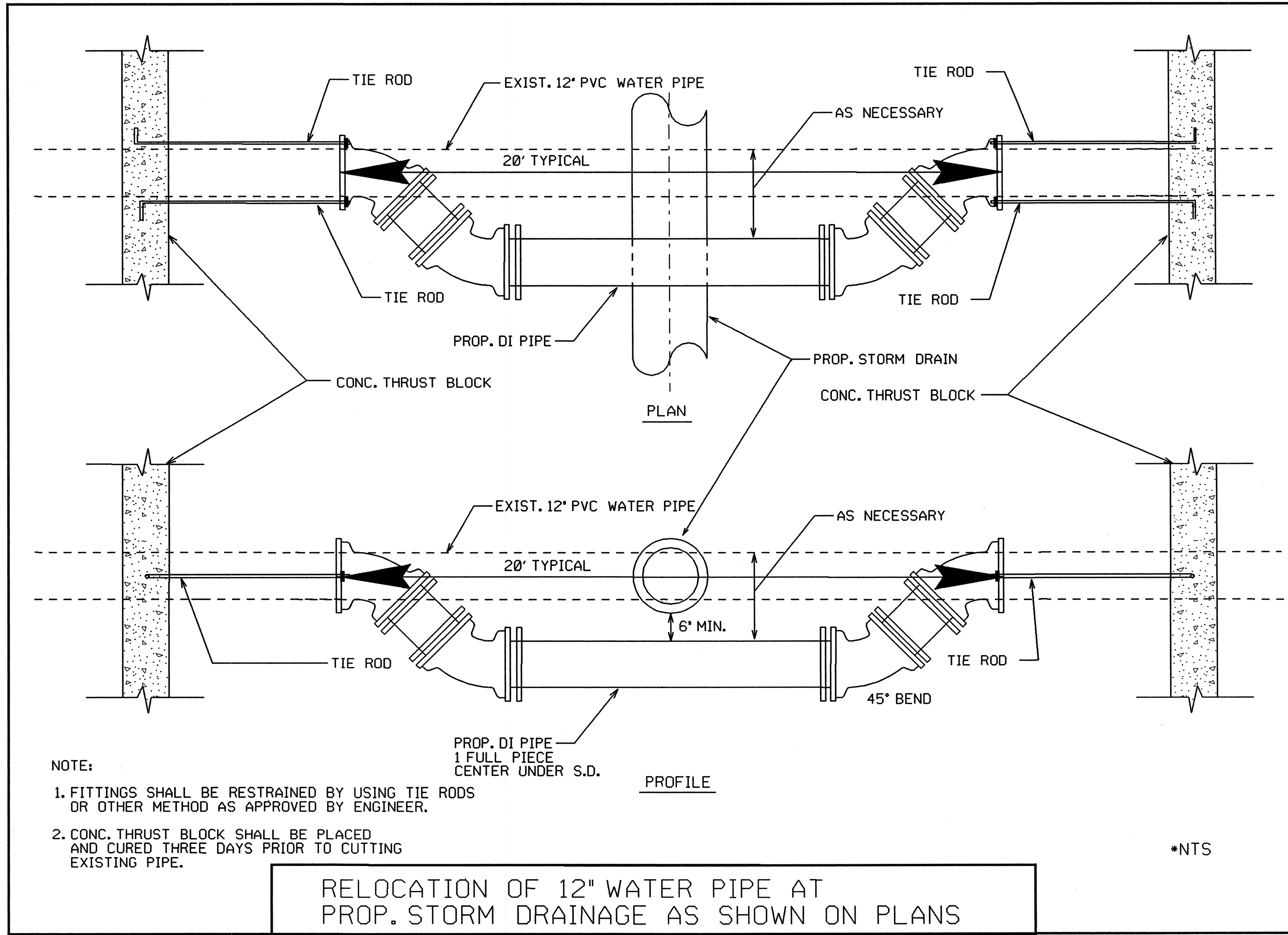
MATCH TO UC-1 13+00 -LREV-

MATCH TO UC-3 11+50 -Y2REV-



REVISIONS





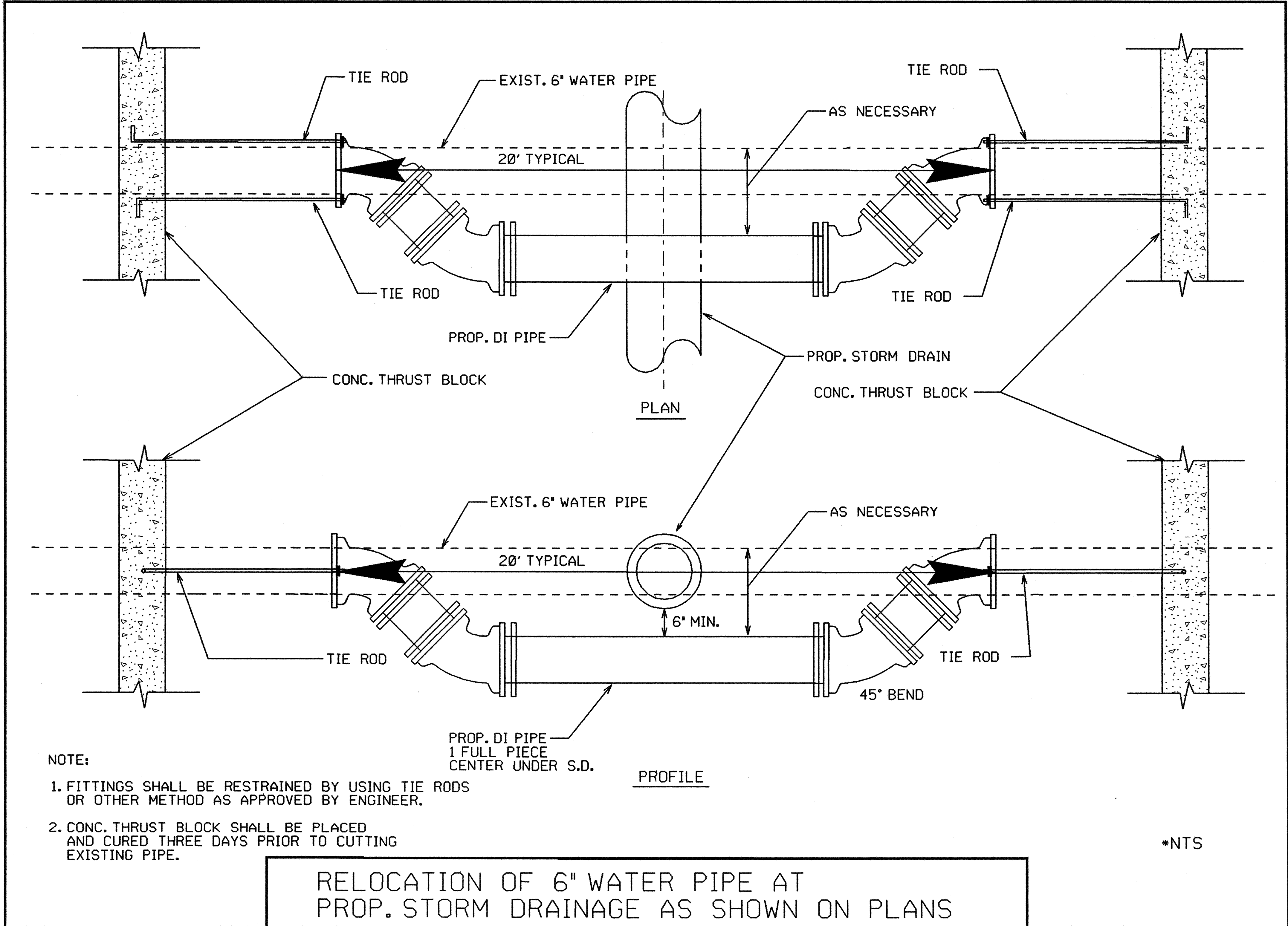
- NOTE:
1. FITTINGS SHALL BE RESTRAINED BY USING TIE RODS OR OTHER METHOD AS APPROVED BY ENGINEER.
 2. CONC. THRUST BLOCK SHALL BE PLACED AND CURED THREE DAYS PRIOR TO CUTTING EXISTING PIPE.

RELOCATION OF 12" WATER PIPE AT
PROP. STORM DRAINAGE AS SHOWN ON PLANS

*NTS

REVISIONS

8/17/99
08-JAN-2010 11:19
D:\du\Randp\p\4352\high-point.rd\psh\utl\ue-psh-4.dgn



- NOTE:
1. FITTINGS SHALL BE RESTRAINED BY USING TIE RODS OR OTHER METHOD AS APPROVED BY ENGINEER.
 2. CONC. THRUST BLOCK SHALL BE PLACED AND CURED THREE DAYS PRIOR TO CUTTING EXISTING PIPE.

RELOCATION OF 6" WATER PIPE AT
PROP. STORM DRAINAGE AS SHOWN ON PLANS

*NTS

REVISIONS

8/17/99
08-JAN-200 11:19
D:\rdy\Renov\psh\utl\uc-ps-h-4.dgn