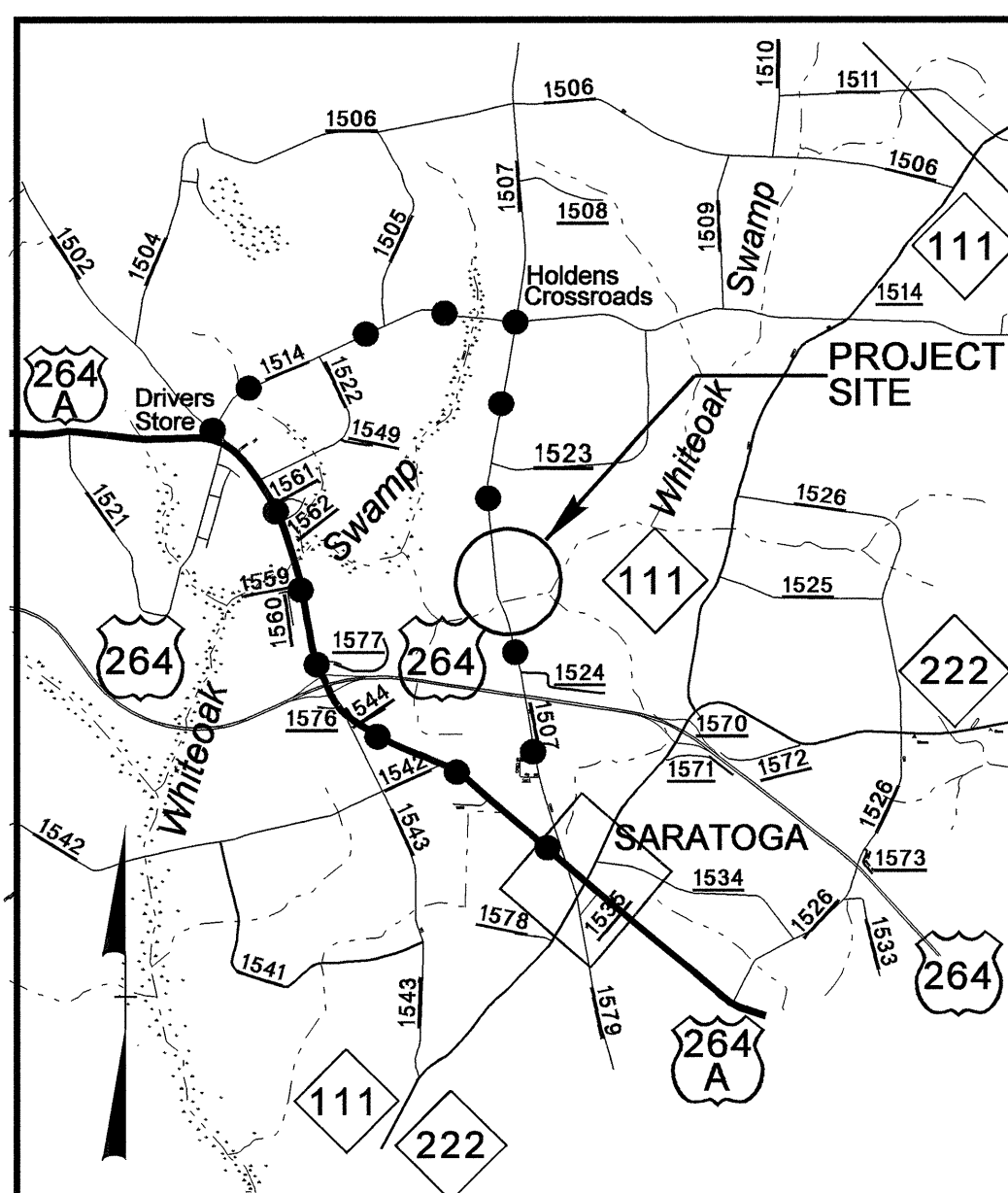


TIP PROJECT: B-4680

14-OCT-2009 08:46 P:\Utilities\Projects\U4\NProj\B4680_uo1_rdy_tsh.dgn

See Sheet 1-A For Index of Sheets



VICINITY MAP

OFFSITE DETOUR ●●●●●●●●●●

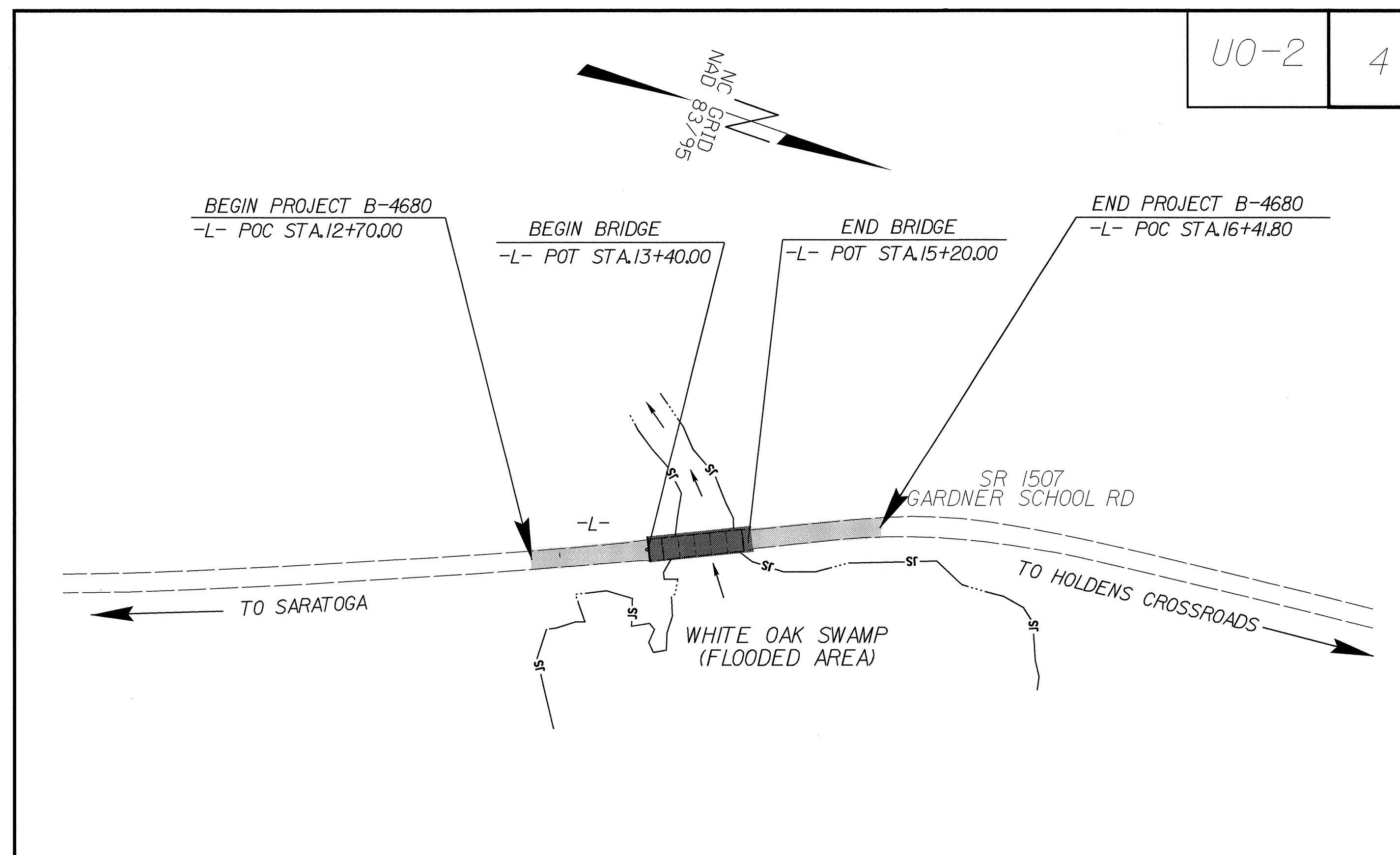
STATE OF NORTH CAROLINA
DIVISION OF HIGHWAYS

**UTILITIES BY OTHERS PLANS
WILSON COUNTY**

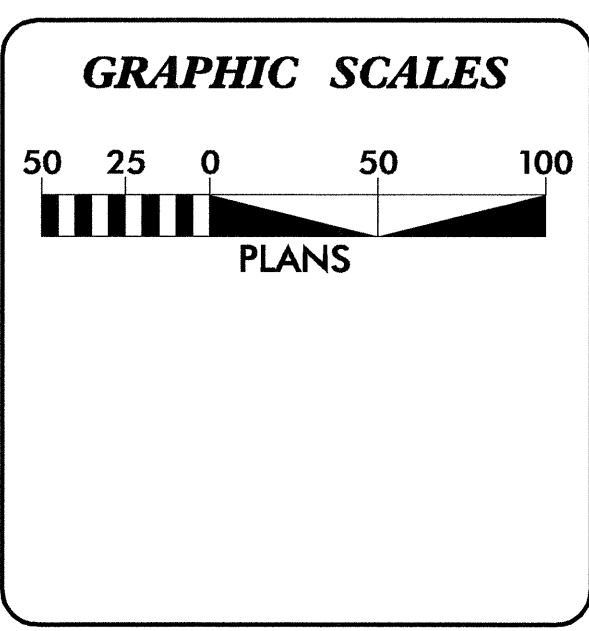
**LOCATION: BRIDGE No. 122 ON SR 1507
OVER WHITEOAK SWAMP**

TYPE OF WORK: UTILITIES

T.I.P. NO.	SHEET NO.
B-4680	UO-1



UO-2	4
------	---



INDEX OF SHEETS	
SHEET NO.	DESCRIPTION
UO-1	TITLE SHEET
UO-2	UTILITIES BY OTHERS PLAN SHEETS

UTILITY OWNERS ON PROJECT
(1) Piedmont Natural Gas. (Gas line)

PREPARED IN THE OFFICE OF:
**DIVISION OF HIGHWAYS
UTILITIES ENGINEERING
SECTION**

1591 MAIL SERVICES CENTER
RALEIGH NC 27699-1591
PHONE (919) 250-4128
FAX (919) 250-4119

Roger Worthington, P.E.	UTILITIES SECTION ENGINEER
Steve Mckee, P.E.	UTILITIES SQUAD LEADER PROJECT ENGINEER
Jamshid Hajshejani	UTILITIES PROJECT DESIGNER

UTILITIES BY OTHERS

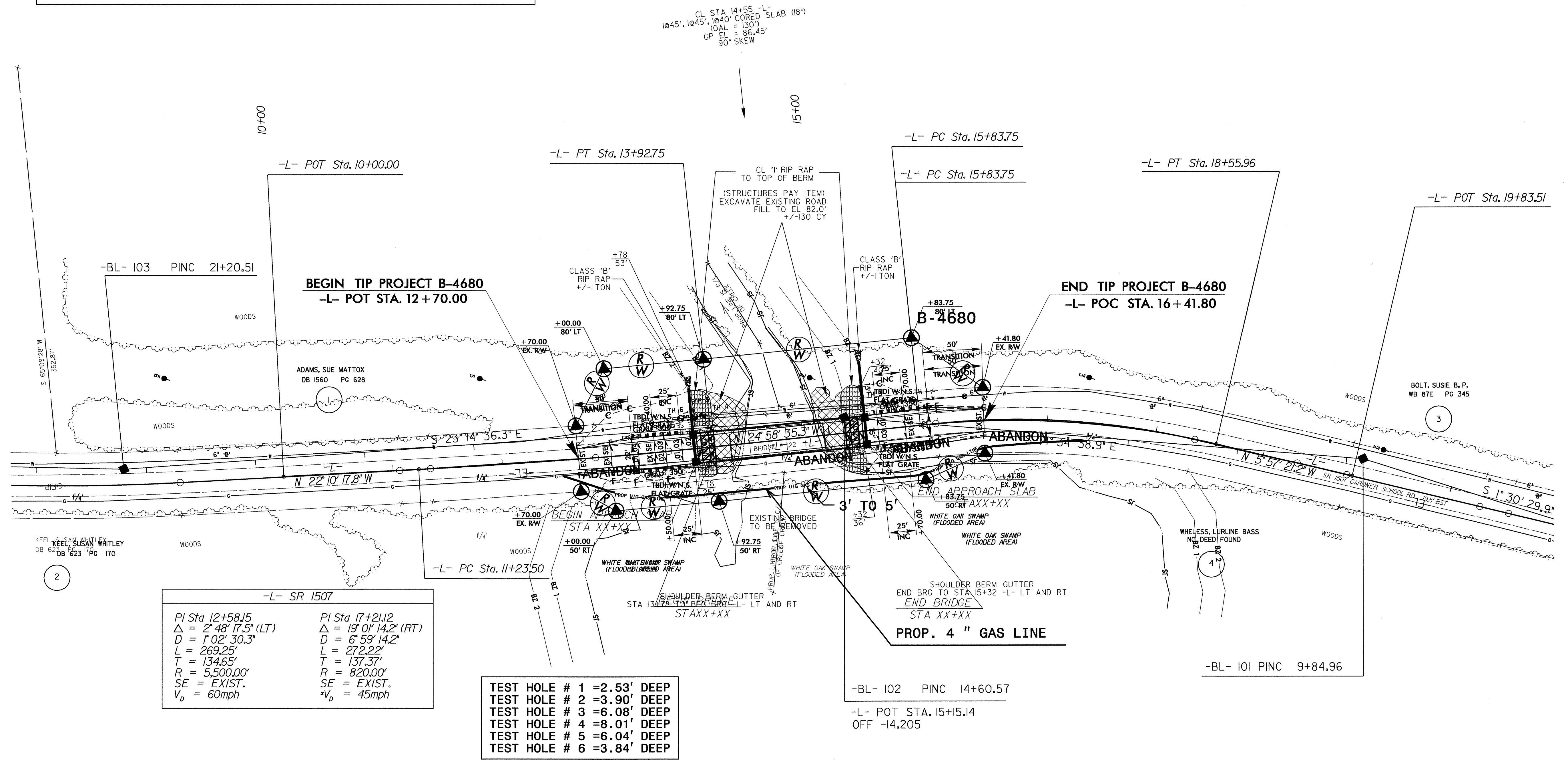
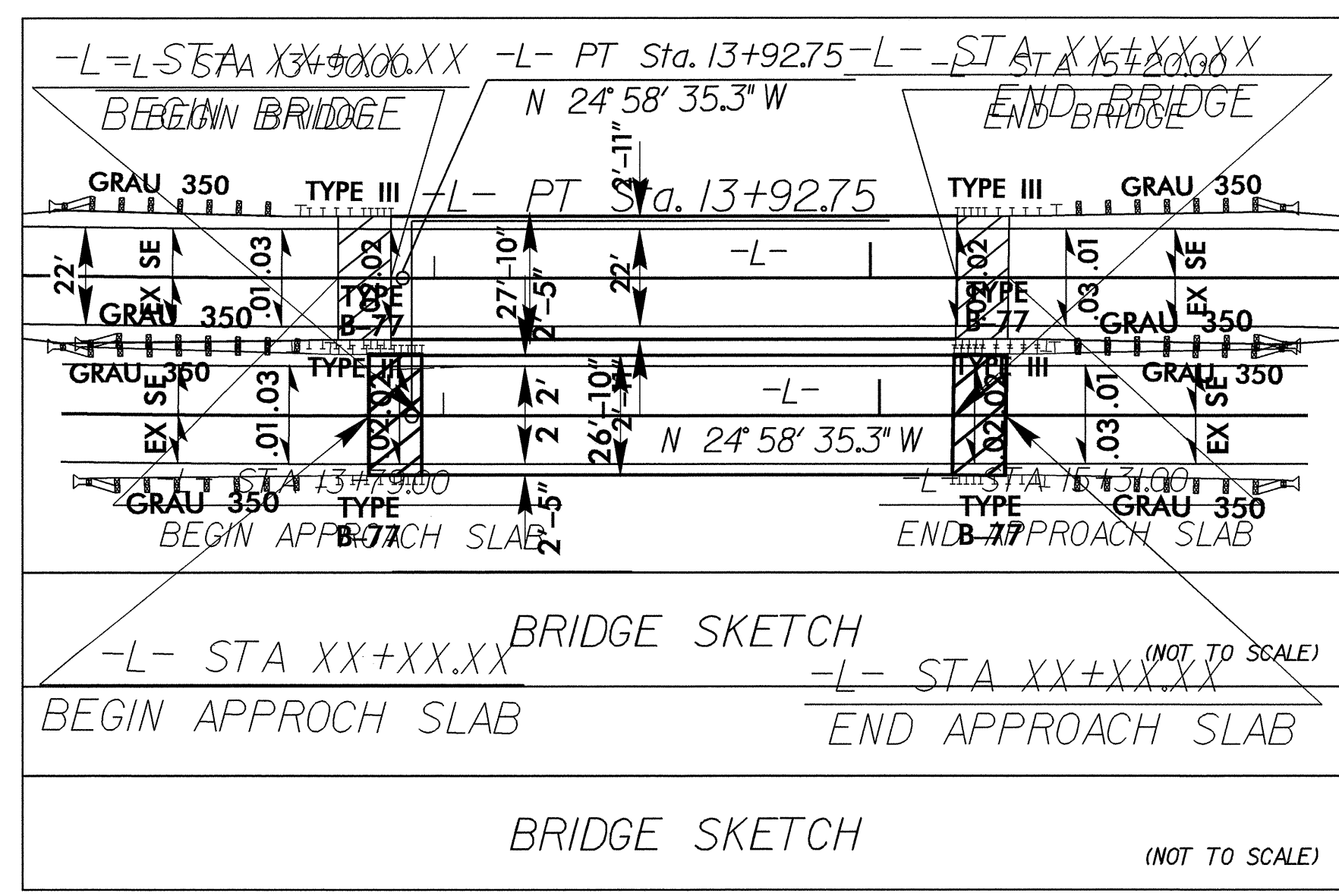
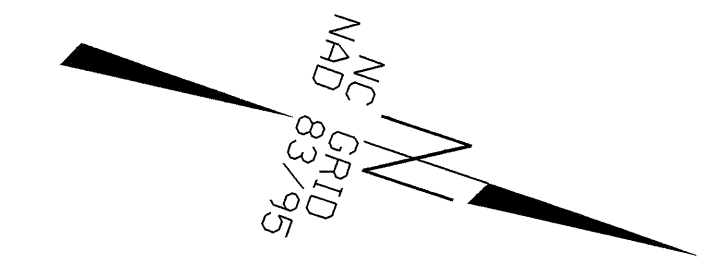
NOTE:
 ALL PROPOSED UTILITY WORK SHOWN ON THIS SHEET WILL BE DONE BY OTHERS

Note:
 Subaqueous gas line (trenchless) will be replaced at a depth of 20 feet under the buffer zones adjacent to the project and 7 feet minimum below the lowest depth of creek.

Note:
 The Utility company's Contractor's attention is directed to Section 1550, 102 and 107 of the Standard Specifications concerning the trenchless installation. No damage is allowed to the buffer zones or stream by the trenchless installation. The Contractor's Engineer shall design the installation method and provide on-site oversight.

GAS LINE BELONGS TO PIEDMONT NATURAL GAS

THE UTILITY (UNDERGROUND) GAS LINE MUST BE INSTALLED WITHIN 3' TO 5' FEET OF THE RIGHT OF WAY LINE.



-L- SR 1507

PI Sta 12+58.15	PI Sta 17+21.12
$\Delta = 2^\circ 48' 17.5\"$ (LT)	$\Delta = 19^\circ 01' 14.2\"$ (RT)
$D = 1^\circ 02' 30.3\"$	$D = 6^\circ 59' 14.2\"$
$L = 269.25'$	$L = 272.22'$
$T = 134.65'$	$T = 137.37'$
$R = 5,500.00'$	$R = 820.00'$
SE = EXIST.	SE = EXIST.
$V_d = 60\text{mph}$	$V_d = 45\text{mph}$

- TEST HOLE # 1 = 2.53' DEEP
- TEST HOLE # 2 = 3.90' DEEP
- TEST HOLE # 3 = 6.08' DEEP
- TEST HOLE # 4 = 8.01' DEEP
- TEST HOLE # 5 = 6.04' DEEP
- TEST HOLE # 6 = 3.84' DEEP

5/14/99
 14-OCT-2009 08:47
 U:\Utilities\Highway\Projects\B4680\UO-2_rdy.s4_psh.dgn
 USER:RAM