

TIP PROJECT: B-4680

STATE OF NORTH CAROLINA
DIVISION OF HIGHWAYS

PLAN FOR PROPOSED
HIGHWAY EROSION CONTROL

WILSON COUNTY

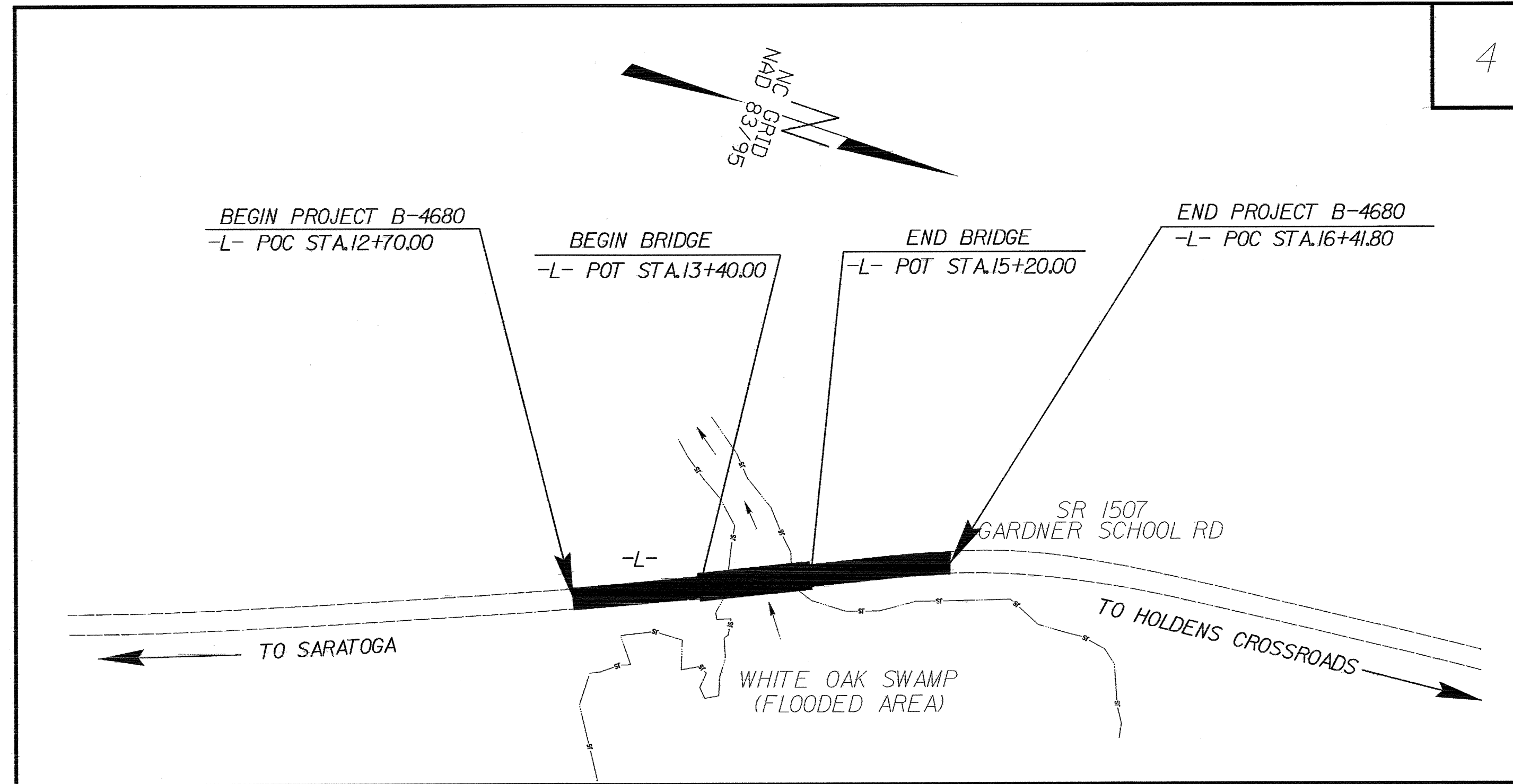
**LOCATION: BRIDGE No. 122 ON SR 1507
OVER WHITEOAK SWAMP**

**TYPE OF WORK: GRADING, DRAINAGE, PAVING, STRUCTURE,
AND GUARDRAIL**

STATE	STATE PROJECT REFERENCE NO.	SHEET NO.	TOTAL SHEETS
N.C.	B-4680	EC-1	
STATE PROJ. NO.	F.A. PROJ. NO.	DESCRIPTION	

EROSION AND SEDIMENT CONTROL MEASURES

Std. #	Description	Symbol
1630.05	Temporary Silt Ditch	TD
1630.05	Temporary Diversion	TD
1605.01	Temporary Silt Fence	III III III
1606.01	Special Sediment Control Fence	III III III
1622.01	Temporary Berms and Slope Drains	TD
1630.01	Riser Basin	TD
	Silt Basin Type B	TD
1633.01	Temporary Rock Silt Check Type-A	TD
	Temporary Rock Silt Check Type-B	TD
	Wattle	TD
1634.01	Temporary Rock Sediment Dam Type-A	TD
1634.02	Temporary Rock Sediment Dam Type-B	TD
1635.01	Rock Pipe Inlet Sediment Trap Type-A	TD
1635.02	Rock Pipe Inlet Sediment Trap Type-B	TD
1630.04	Stilling Basin	TD
1630.06	Special Stilling Basin	TD
	Rock Inlet Sediment Trap:	
1632.01	Type A	A
1632.02	Type B	B
1632.03	Type C	C
	Skimmer Basin	TD
	Tiered Skimmer Basin	TD
	Infiltration Basin	TD



**THIS PROJECT CONTAINS
EROSION CONTROL PLANS
FOR CLEARING AND
GRUBBING PHASE OF
CONSTRUCTION.**

**THIS PROJECT HAS
BEEN DESIGNED TO
SENSITIVE WATERSHED
STANDARDS.**

**ENVIRONMENTALLY
SENSITIVE AREA(S) EXIST
ON THIS PROJECT**

*Refer To E. C. Special Provisions
for Special Considerations.*

GRAPHIC SCALE

0
PLANS

0
PROFILE (HORIZONTAL)

0
PROFILE (VERTICAL)

ROADSIDE ENVIRONMENTAL UNIT
DIVISION OF HIGHWAYS
STATE OF NORTH CAROLINA

Prepared In the Office of:
ROADSIDE ENVIRONMENTAL UNIT
1 South Wilmington St.
Raleigh, NC 27611

2006 STANDARD SPECIFICATIONS

Roadway Standard Drawings

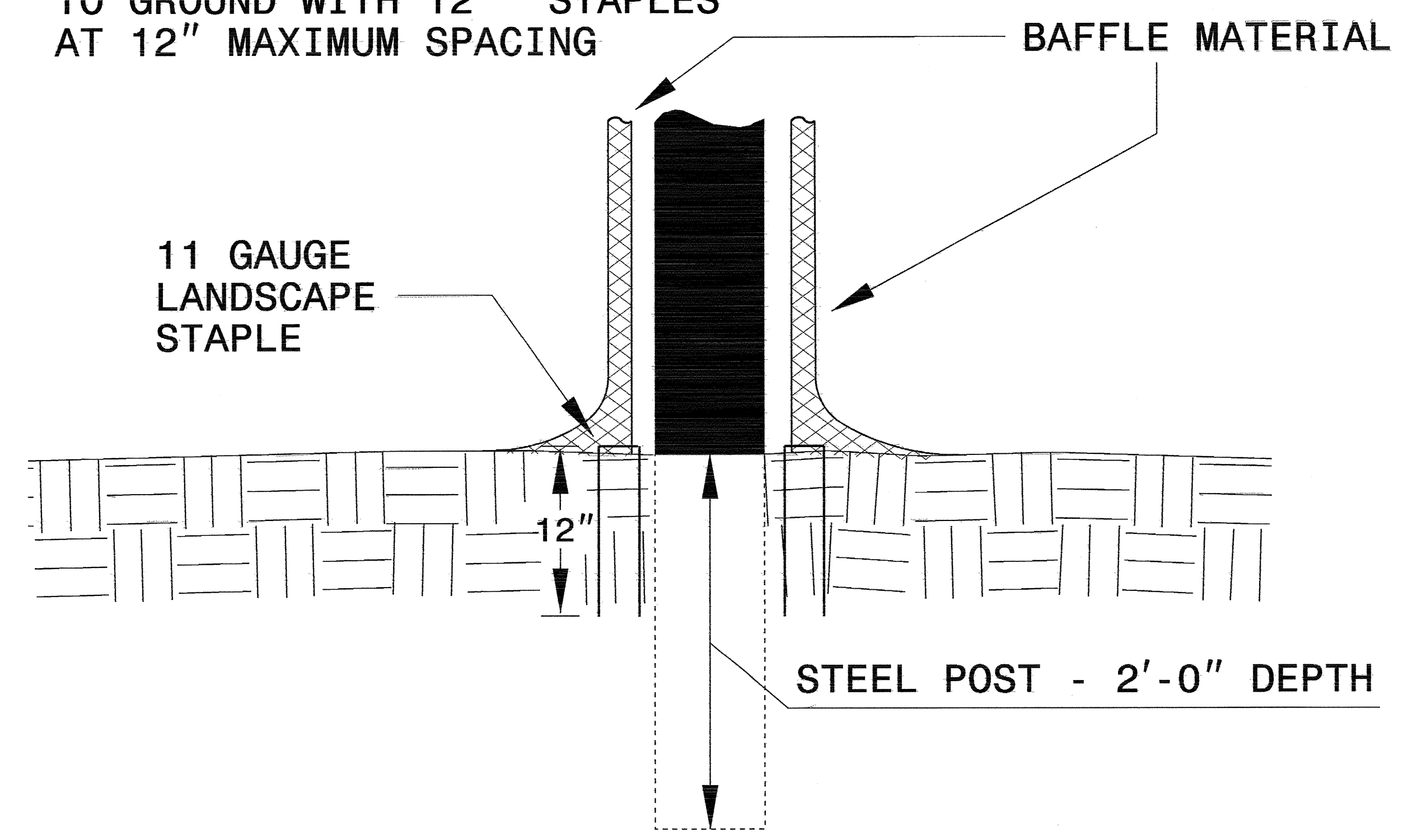
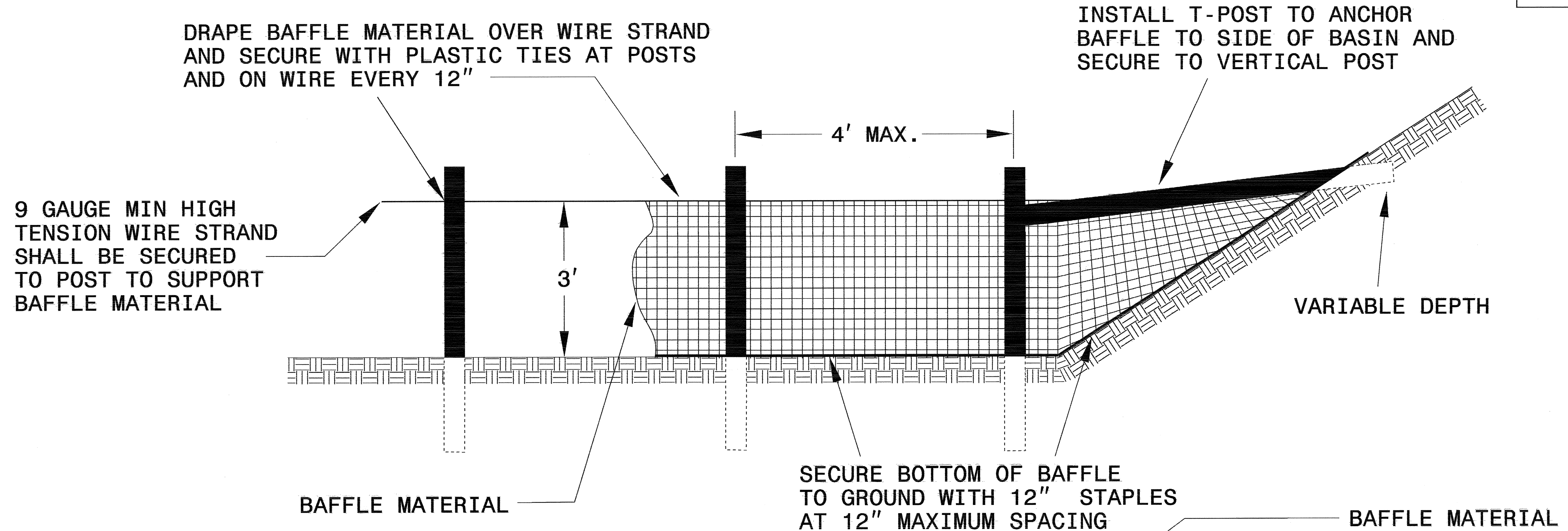
The following roadway english standards as appear in "Roadway Standard Drawings"- Roadway Design Unit - N. C. Department of Transportation - Raleigh, N. C., dated July 18, 2006 and the latest revision thereto are applicable to this project and by reference hereby are considered a part of these plans.

1605.01 Temporary Silt Fence
1606.01 Special Sediment Control Fence
1607.01 Gravel Construction Entrance
1622.01 Temporary Berms and Slope Drains
1632.03 Rock Inlet Sediment Trap Type C

05-OCT-2008 13:37
c:\envr\envr\proj\B-4680.ec.tsh\dgn

PROJECT REFERENCE NO. B-4680	SHEET NO. EC-2
RAW SHEET NO.	
ROADWAY DESIGN ENGINEER	HYDRAULICS ENGINEER

COIR FIBER BAFFLE DETAIL



NOTES:

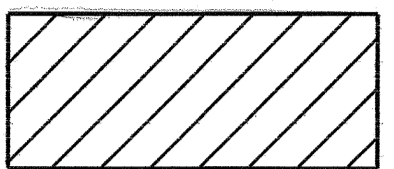
1. INSTALL THREE(3) COIR FIBER BAFFLES IN SILT BASINS AND SEDIMENT DAMS AT DRAINAGE OUTLETS WITH A SPACING OF $\frac{1}{4}$ THE BASIN LENGTH.
2. TWO(2) COIR FIBER BAFFLES CAN BE INSTALLED IN SILT BASINS AND DAMS LESS THAN 20 FT. IN LENGTH WITH A SPACING OF $\frac{1}{3}$ THE BASIN LENGTH.
3. TOP HEIGHT OF COIR FIBER BAFFLES SHALL NOT BE BELOW BASE OF EMERGENCY SPILLWAY ELEVATION.

BAFFLE MATERIAL SHALL BE SECURED TO THE BOTTOM AND SIDES OF BASIN USING 12" LANDSCAPE STAPLES

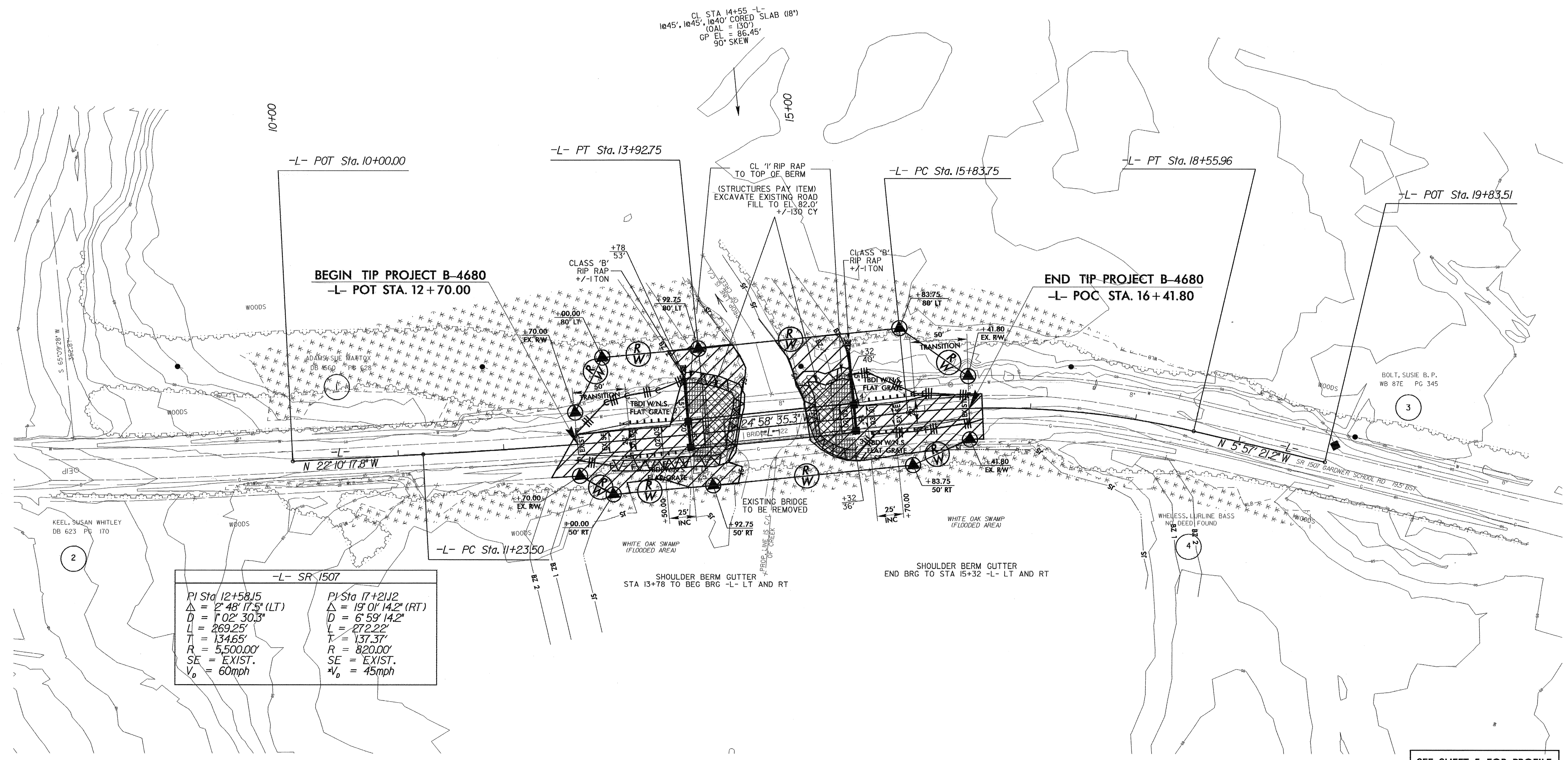
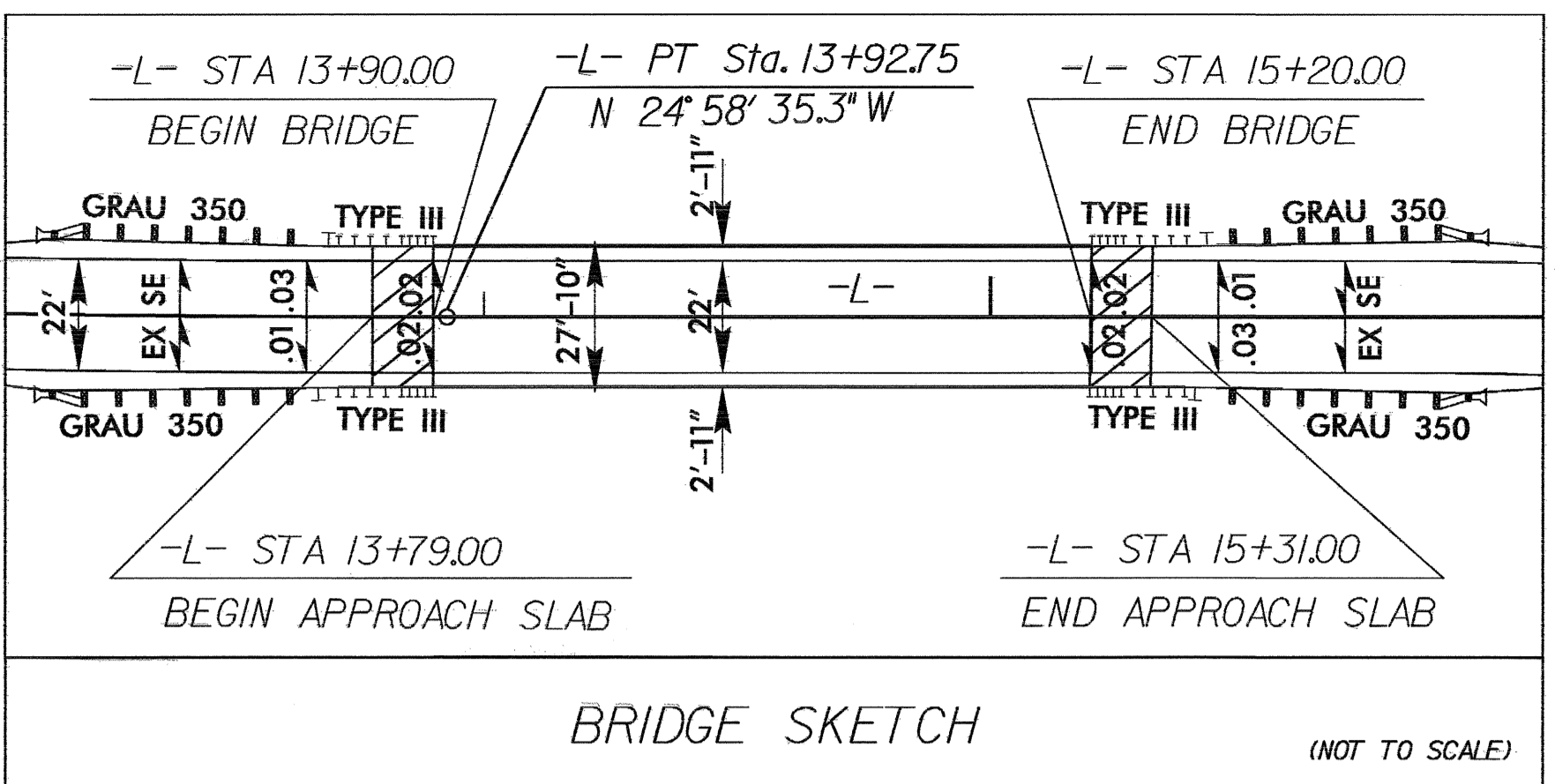
PROJECT REFERENCE NO.	SHEET NO.
B-4680	EC-3/CONST.4
RW SHEET NO.	HYDRAULICS ENGINEER
ROADWAY DESIGN ENGINEER	

**CLEARING AND GRUBBING
EROSION CONTROL FOR
CONSTRUCTION SHEET 4**

NOTE:
PLACE TEMPORARY ROCK SEDIMENT DAMS TYPE - B
AND TEMPORARY ROCK SILT CHECKS TYPE - A AT
DRAINAGE OUTLETS.

 ENVIRONMENTALLY SENSITIVE AREA
SEE PROJECT SPECIAL PROVISIONS

NOTE:
WOODEN POSTS SHALL BE UTILIZED WITH TEMPORARY
SILT FENCE AS DIRECTED.
PLEASE SEE PROJECT SPECIAL PROVISIONS.

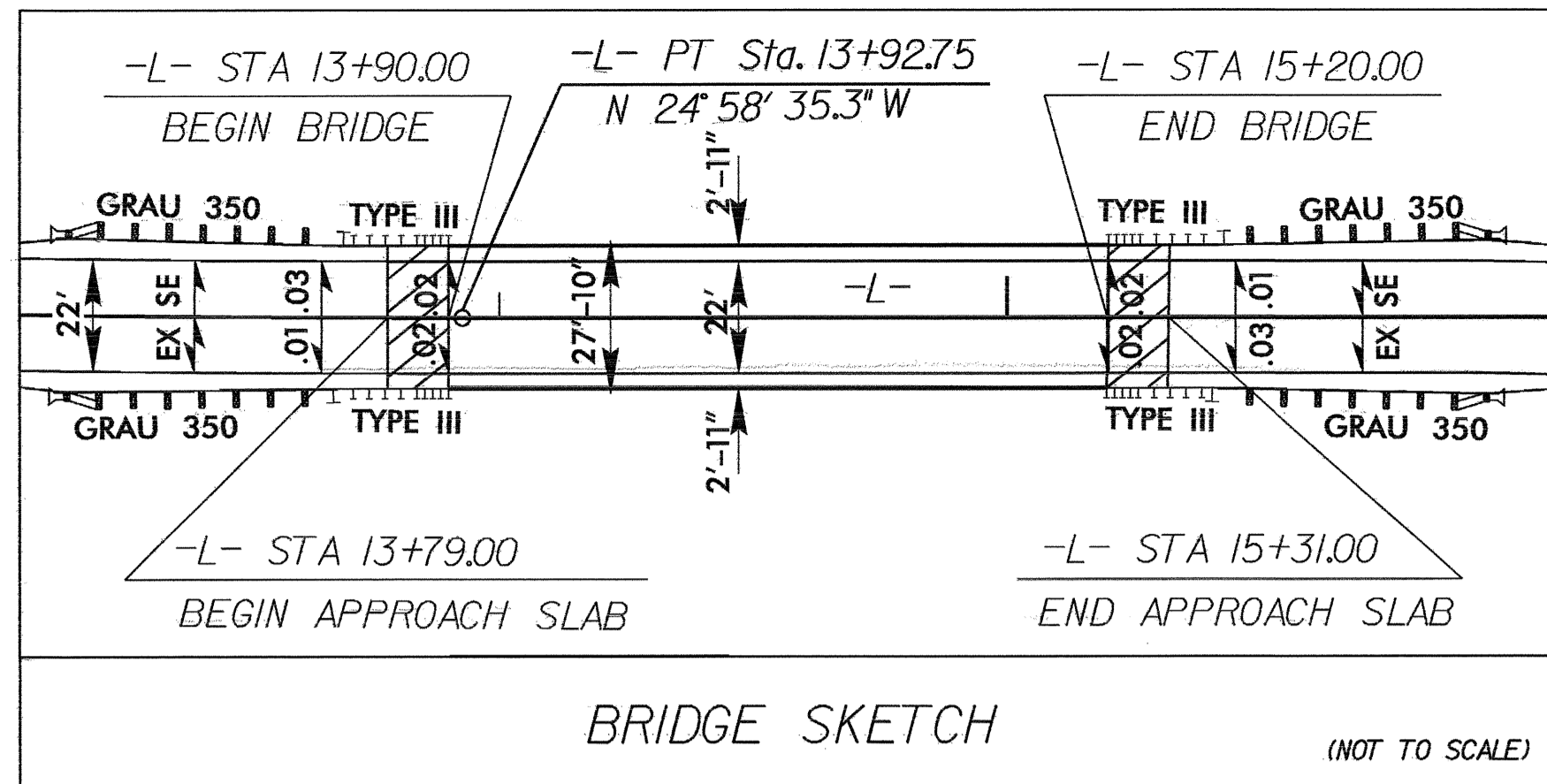


PI Sta 12+58.15 $\Delta = 2' 48" 17.5" (LT)$ $D = 1' 02" 30.3"$ $L = 269.25'$ $T = 134.65'$ $R = 5,500.00'$ $SE = EXIST.$ $V_o = 60mph$	PI Sta 17+21.12 $\Delta = 19' 01" 14.2" (RT)$ $D = 6' 59" 14.2"$ $L = 272.22'$ $T = 137.37'$ $R = 820.00'$ $SE = EXIST.$ $V_o = 45mph$
--	---

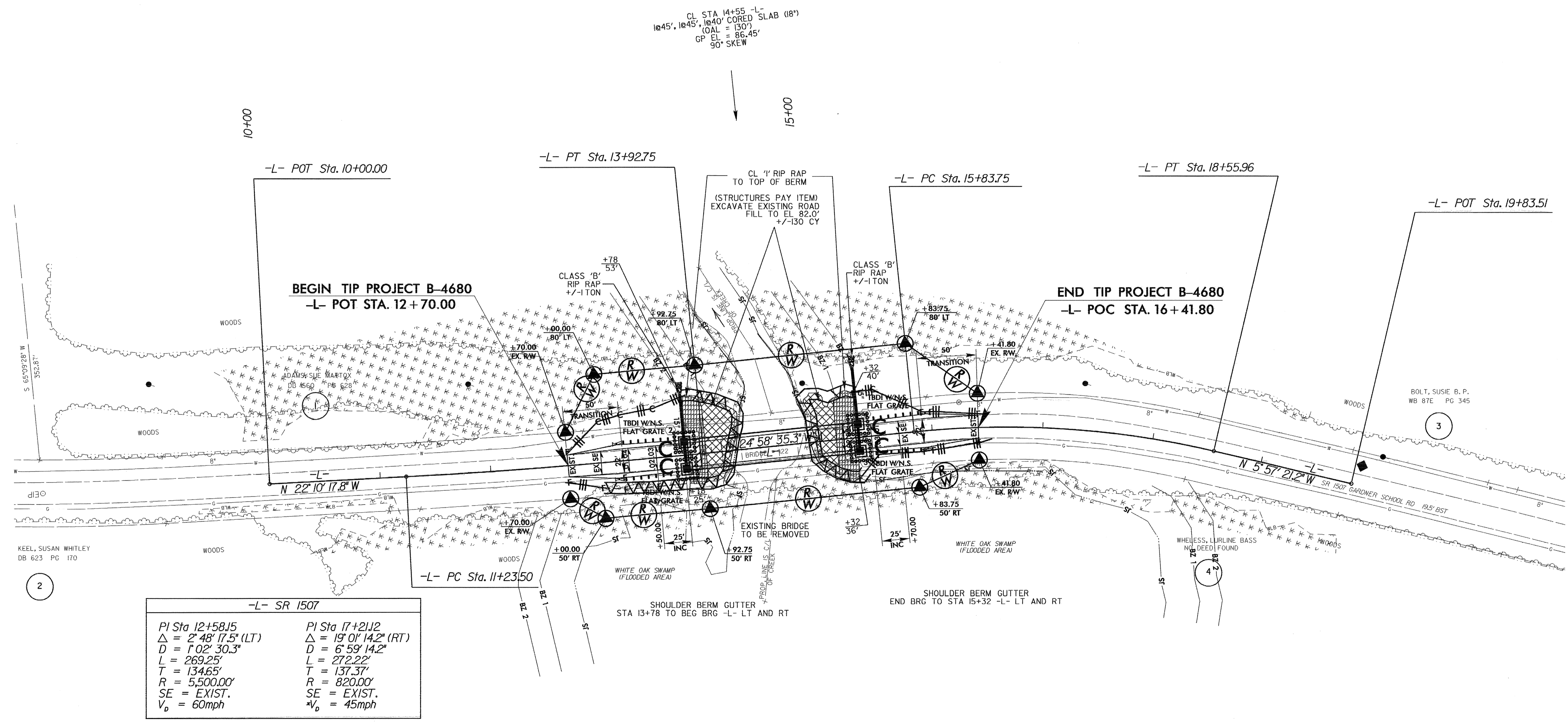
SEE SHEET 5 FOR PROFILE

8/17/09
 05-OCT-2009 13:38
 c:\envr\com\design\b4680_ec_psh4.dgn
 AT: RBNV231812

PROJECT REFERENCE NO.	SHEET NO.
B-4680	EC-4/CONST.4
RW SHEET NO.	
ROADWAY DESIGN ENGINEER	HYDRAULICS ENGINEER



NOTE:
WOODEN POSTS SHALL BE UTILIZED WITH TEMPORARY SILT FENCE AS DIRECTED.
PLEASE SEE PROJECT SPECIAL PROVISIONS.



-L- SR 1507	
PI Sta 12+58.15	PI Sta 17+21.12
$\Delta = 2^\circ 48' 17.5''$ (LT)	$\Delta = 19^\circ 01' 14.2''$ (RT)
$D = 1^\circ 02' 30.3''$	$D = 6^\circ 59' 14.2''$
$L = 269.25'$	$L = 272.22'$
$T = 134.65'$	$T = 137.37'$
$R = 5,500.00'$	$R = 820.00'$
SE = EXIST.	SE = EXIST.
$V_o = 60\text{mph}$	$V_o = 45\text{mph}$

SEE SHEET 5 FOR PROFILE

8/17/99
05-001-2009 13+38
C:\enviro\comp\13+38\design\B-4680.ec-psh4.dgn
13+38
13+38
13+38