

STATE OF NORTH CAROLINA
DIVISION OF HIGHWAYS

STATE PROJECT REFERENCE NO.	SHEET NO.
B - 4 6 4 2	TCP-1

**PLAN FOR PROPOSED
TRAFFIC CONTROL, MARKING & DELINEATION
SCOTLAND COUNTY**

B - 4642

TIP PROJECT:

ROADWAY STANDARD DRAWINGS

THE FOLLOWING ROADWAY STANDARDS AS APPEAR IN "ROADWAY STANDARD DRAWINGS" - ROADWAY DESIGN UNIT-N.C. DEPARTMENT OF TRANSPORTATION-RALEIGH, N.C., DATED JULY 2006 ARE APPLICABLE TO THIS PROJECT AND BY REFERENCE HEREBY ARE CONSIDERED A PART OF THESE PLANS:


STD. NO.	TITLE
1101.03	TEMPORARY ROAD CLOSURES
1101.05	WORK ZONE VEHICLE ACCESSES
1101.11	TRAFFIC CONTROL DESIGN TABLES
1110.01	STATIONARY WORK ZONE SIGNS
1145.01	BARRICADES

INDEX OF SHEETS

SHEET NO.	TITLE
TCP-1	LIST OF APPLICABLE ROADWAY STANDARD DRAWINGS, LEGEND, INDEX OF SHEETS AND GENERAL NOTES
TCP-2	DETOUR ROUTE AND PHASING
TCP-3	DETOUR SIGN DETAIL

LEGEND

TRAFFIC CONTROL DEVICES

 TYPE III BARRICADE

 STATIONARY SIGN

GENERAL NOTES

CHANGES MAY BE REQUIRED WHEN PHYSICAL DIMENSIONS IN THE DETAIL DRAWINGS, STANDARD DETAILS AND ROADWAY DETAILS ARE NOT ATTAINABLE TO MEET FIELD CONDITIONS, OR RESULT IN DUPLICATE, OR UNDESIRABLE OVERLAPPING OF DEVICES. MODIFICATION MAY INCLUDE: MOVING, SUPPLEMENTING, COVERING, OF REMOVAL OF DEVICES, AS DIRECTED BY THE ENGINEER.

THE FOLLOWING GENERAL NOTES APPLY AT ALL TIMES FOR THE DURATION OF THE CONSTRUCTION PROJECT EXCEPT WHEN OTHERWISE NOTED IN THE PLAN OR AS DIRECTED BY THE ENGINEER.

TRAFFIC PATTERN ALTERATIONS

A) NOTIFY THE ENGINEER TWENTY ONE (21) CALENDAR DAYS PRIOR TO ANY TRAFFIC PATTERN ALTERATION.

SIGNING

B) PROVIDE SIGNING AND DEVICES REQUIRED TO CLOSE THE ROAD ACCORDING TO THE ROADWAY STANDARD DRAWINGS AND TRAFFIC CONTROL PLANS.

PROVIDE SIGNING REQUIRED FOR THE OFF-SITE DETOUR ROUTE AS SHOWN IN THE TRAFFIC CONTROL PLANS.

C) COVER OR REMOVE ALL SIGNS AND DEVICES REQUIRED TO CLOSE THE ROAD WHEN ROAD CLOSURE IS NOT IN OPERATION.

COVER OR REMOVE ALL SIGNS REQUIRED FOR THE OFF-SITE DETOUR WHEN THE DETOUR IS NOT IN OPERATION.

D) ENSURE ALL NECESSARY SIGNING IS IN PLACE PRIOR TO ALTERING ANY TRAFFIC PATTERN.

TRAFFIC CONTROL DEVICES

E) PLACE TYPE III BARRICADES, WITH "ROAD CLOSED" SIGN R11-2 ATTACHED, OF SUFFICIENT LENGTH TO CLOSE ENTIRE ROADWAY PER THE PAVEMENT MARKING PLAN.

PAVEMENT MARKINGS AND MARKERS

F) INSTALL PAVEMENT MARKINGS AND PAVEMENT MARKERS ON THE FINAL SURFACE AS SHOWN IN THE PAVEMENT MARKING PLAN.

G) TIE PROPOSED PAVEMENT MARKING LINES TO EXISTING PAVEMENT MARKING LINES.

APPROVED: _____
DATE: _____

SEAL



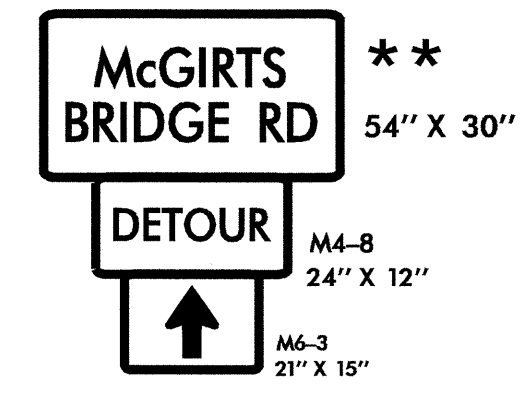
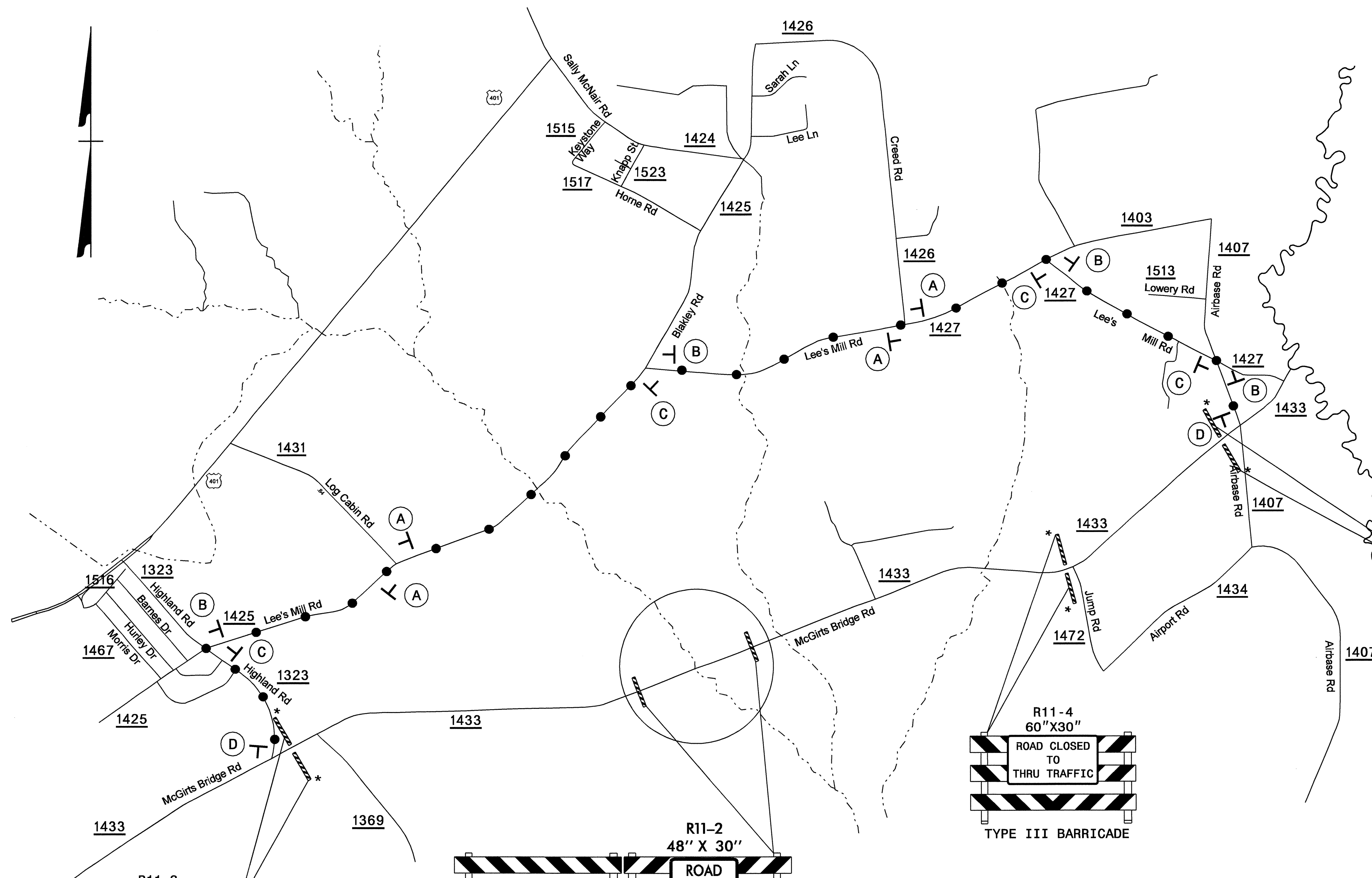
PLAN PREPARED BY: N.C.D.O.T. TRAFFIC CONTROL, MARKING & DELINEATION UNIT

J. S. BOURNE, P.E. STATE TRAFFIC MANAGEMENT ENGINEER

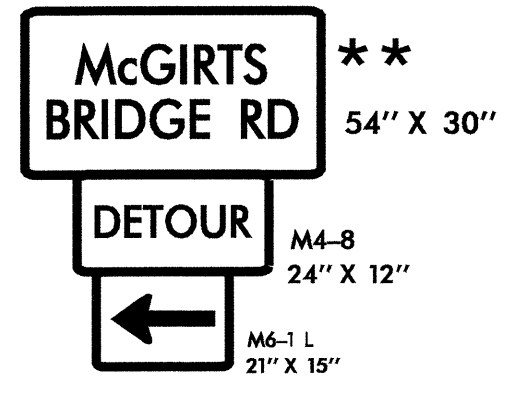
G. L. GETTIER, P.E. TRAFFIC CONTROL PROJECT ENGINEER

J. W. GILSTRAP TRAFFIC CONTROL PROJECT DESIGN ENGINEER

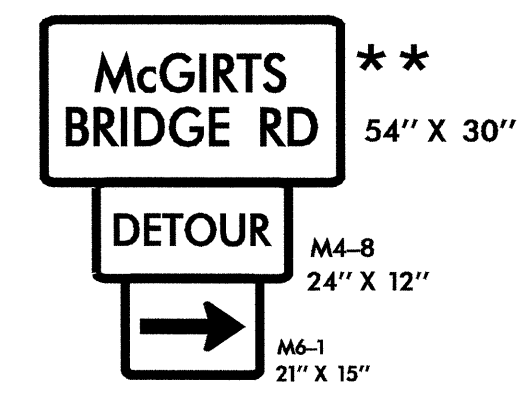
S. GREEN TRAFFIC CONTROL DESIGN ENGINEER



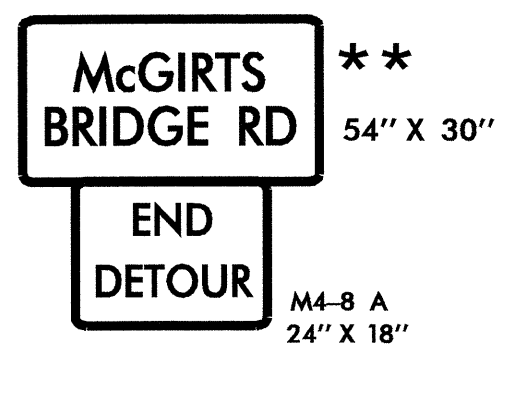
SIGN (A)



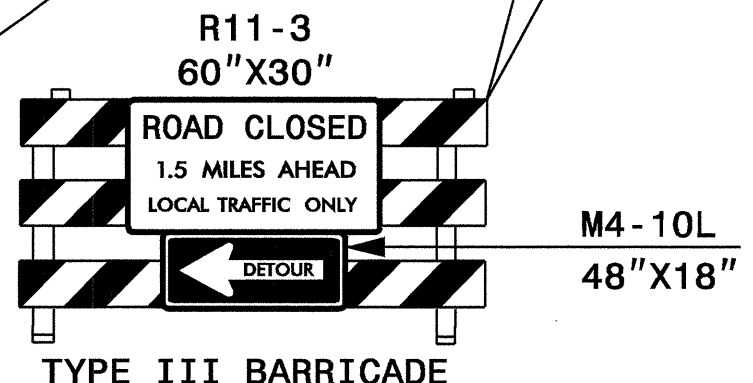
SIGN (B)



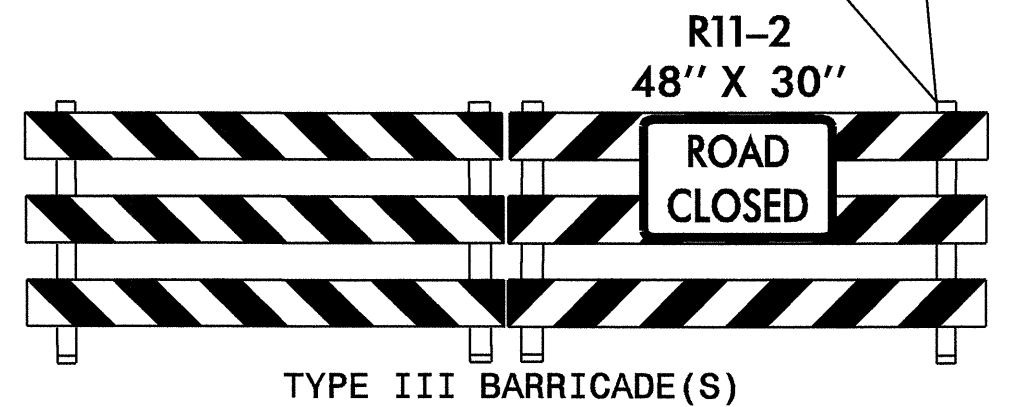
SIGN (C)



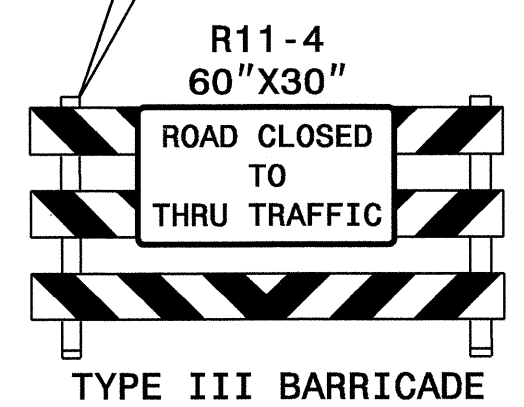
SIGN (D)



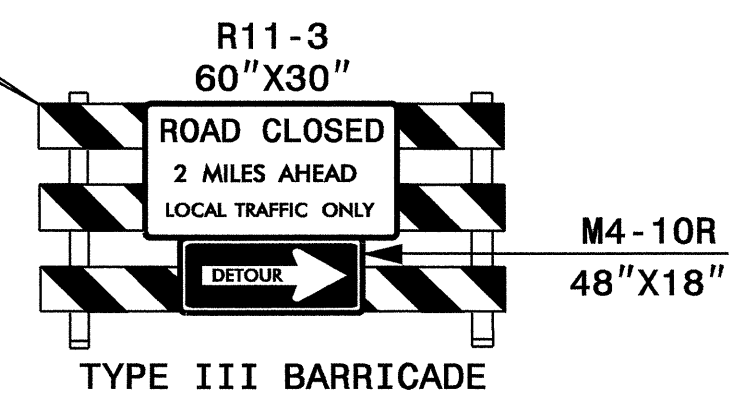
TYPE III BARRICADE



TYPE III BARRICADE(S)



TYPE III BARRICADE



TYPE III BARRICADE

PHASING

- STEP 1: - INSTALL OFF-SITE DETOUR ROUTE SIGN ASSEMBLIES FOR THE CLOSING OF SR 1433 (McGIRTS BRIDGE ROAD, -L-).
- USING ROADWAY STANDARD DRAWING NO. 1101.03, SHEET 1 OF 9, CLOSE SR 1433 (McGIRTS BRIDGE ROAD, -L-) TO THRU TRAFFIC.
- STEP 2: - REMOVE THE EXISTING STRUCTURE AND CONSTRUCT THE PROPOSED STRUCTURE AND ROADWAY UP TO AND INCLUDING THE FINAL LAYER OF SURFACE COURSE AND PLACE FINAL PAVEMENT MARKINGS AND MARKERS ON SR 1433 (McGIRTS BRIDGE ROAD, -L-) FROM STATION 11+75 +/- -L- TO STATION 19+15 +/- -L-. (SEE CONSTRUCTION PLANS AND PAVEMENT MARKING PLAN).
- STEP 3: - REMOVE ALL TRAFFIC CONTROL DEVICES, SIGNING AND DETOUR ROUTE SIGNING.
- OPEN TO FINAL TRAFFIC PATTERN.

- NOTES
- ALL DETOUR SIGN LOCATIONS ARE APPROXIMATE.
 - ALL DETOUR SIGNS ARE BLACK ON ORANGE UNLESS OTHERWISE NOTES.
 - ALL WARNING SIGN LOCATIONS ARE APPROXIMATE.
- * SEE ROADWAY STANDARD DRAWING NO. 1101.03, SHEET 1 OF 9, FOR ADDITIONAL WORK ZONE SIGNS, DEVICES AND LOCATIONS.
- ** SEE TCP-3 FOR SIGN DESIGN.

APPROVED: _____	DATE: _____	DETOUR ROUTE AND PHASING	
		DATE: 9/09	
DWG. BY: SNG			
DESIGN BY: SNG			
REVIEWED BY: JWG			

03-NOV-2009 12:45
 N:\dot\dfs\proj\03\11\p\projects\b4642\trafficcontrol\tcp\b4642_tc_tcp-2.dgn
 sngreen AT WZ1024133

SIGN NUMBER: SP09136 BACKG COLOR: Fluorescent Orange
 TYPE: STATIONARY COPY COLOR: Black
 QUANTITY: SEE PLANS

DESIGN BY: WMD
 PROJECT ID: B-4642

CHECKED BY:
 DIV: 8

DATE: Sep 28, 2009

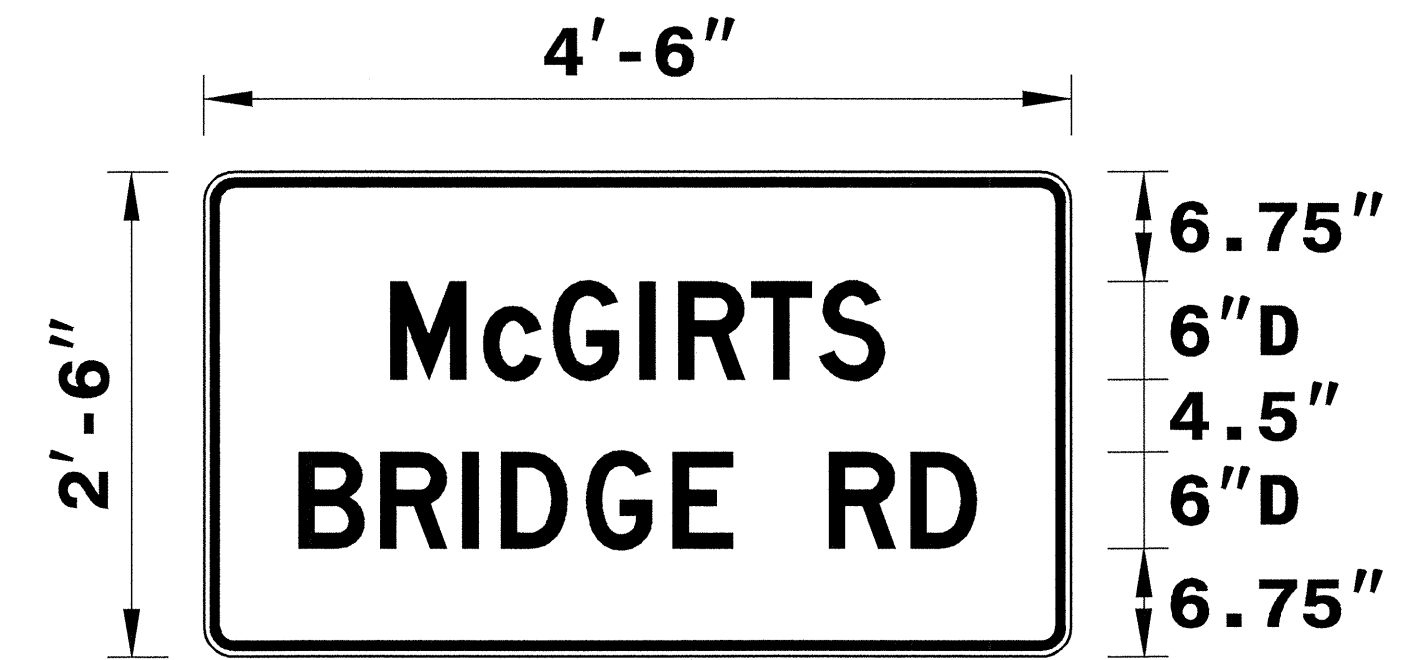
SIGN WIDTH: 4'-6"
 HEIGHT: 2'-6"
 TOTAL AREA: 11.3 Sq.Ft.

SYMBOL	X	Y	WID	HT

BORDER TYPE: INSET
 RECESS: 0.38"
 WIDTH: 0.63"
 RADII: 1.5"

MAT'L: 0.080" (2.0 mm) ALUMINUM

NO. Z BARS:
 LENGTH:



BORDER
 R=1.5"
 TH=0.63"
 IN=0.38"

USE NOTES: 1,2

- Legend and border shall be direct applied black non-reflective sheeting.
- Background shall be Type VII, VIII, or IX (prismatic) fluorescent orange retroreflective sheeting.

Spacing Factor is 1 unless specified otherwise

LETTER POSITIONS

Letter spacings are to start of next letter															Series/Size	
															Text Length	
		M	c	G	I	R	T	S								D 2000
	11.6	5.8	4.3	5.4	2.4	4.6	4.2	4.1	11.6							30.7
		B	R	I	D	G	E		R	D						D 2000
	5.9	5.1	5.1	2.4	5.3	5.4	3.7	6	5.1	4.1	5.9					42.2

FILENAME: B-4642

NORTH CAROLINA D.O.T. SIGN DETAIL

03-NOV-2009 13:40
 sng
 WZTC24133

APPROVED: _____ DATE: _____	DETOUR SIGN DETAIL							
SCALE: NONE DATE: 09/09 DWG. BY: SNG DESIGN BY: SNG REVIEWED BY: JWG		REVISIONS <table border="1"> <tr><td> </td><td> </td></tr> <tr><td> </td><td> </td></tr> <tr><td> </td><td> </td></tr> </table>						