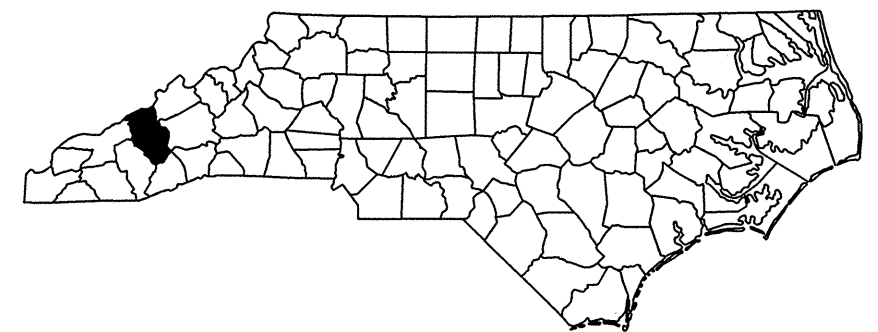
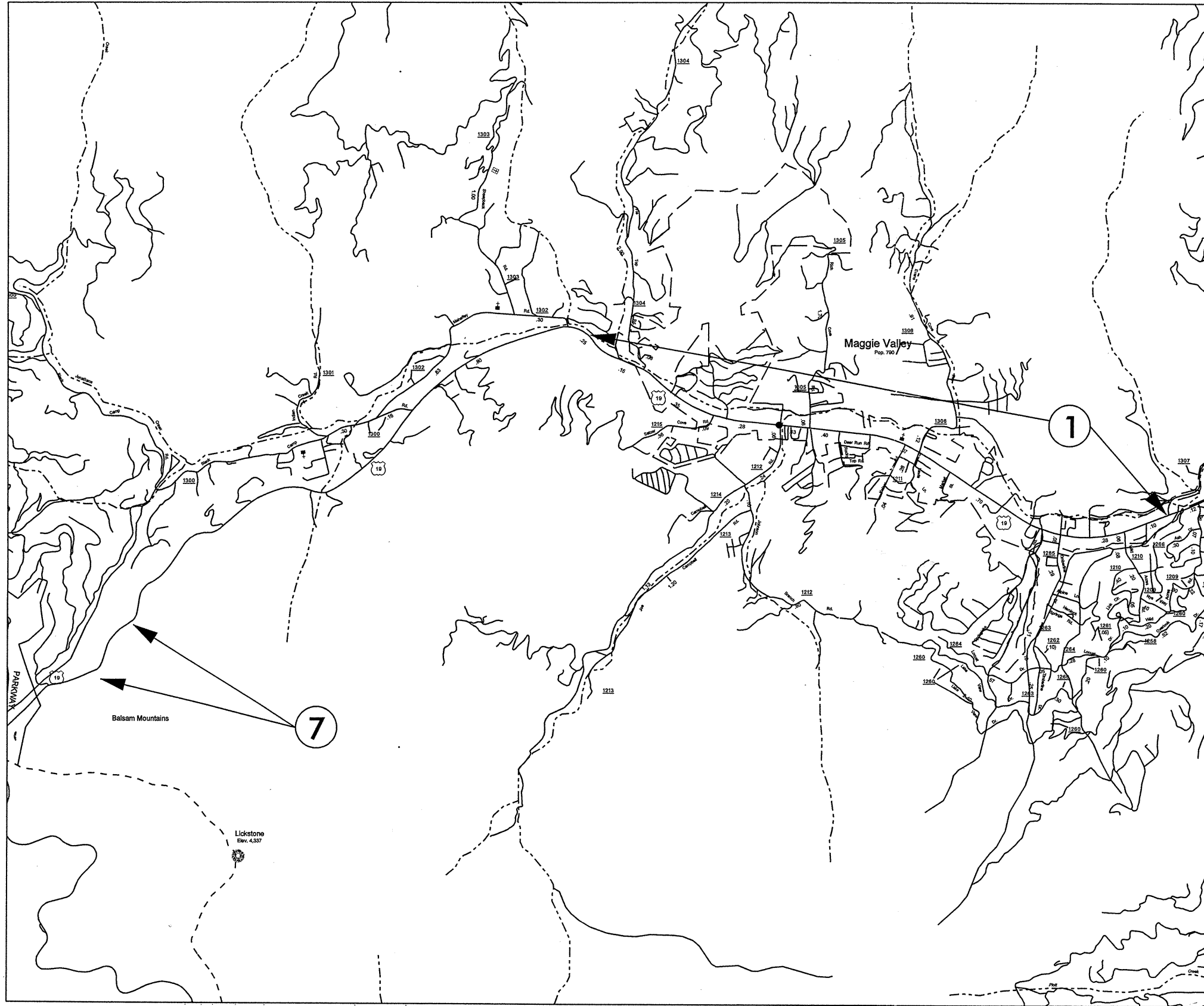


05019

# 2009 CONTRACT RESURFACING HAYWOOD COUNTY

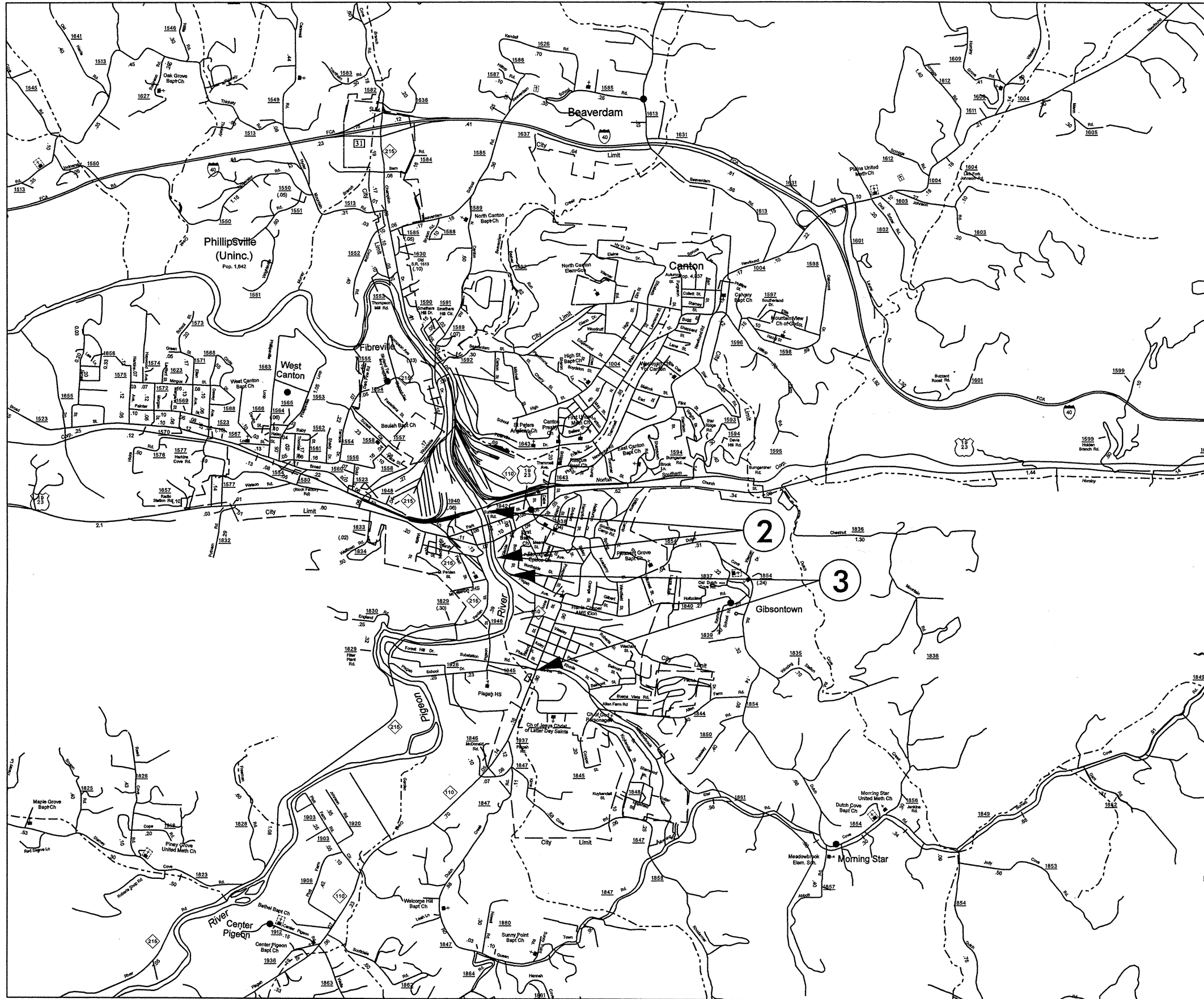
PROJECT REFERENCE NO.		SHEET NO.
14CR.10441.4		1 OF 10
STATE PROJECT	F.A. PROJECT NO.	DESCRIPTION
14CR.10441.4		
14CR.20441.6		



\*\*\*\*\*SYTIME\*\*\*\*  
 \*\*\*\*\*SDGN\*\*\*\*\*  
 \*\*\*\*\*USERNAME\*\*\*\*

# 2009 CONTRACT RESURFACING HAYWOOD COUNTY

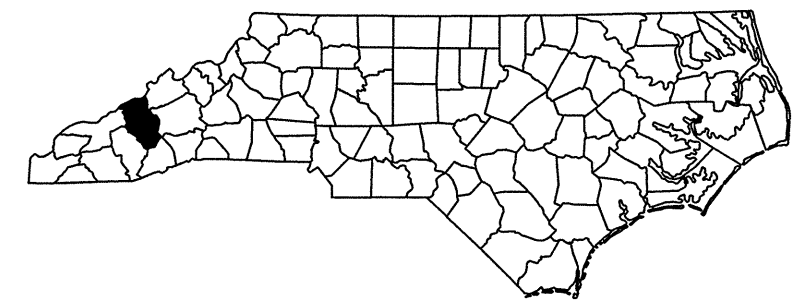
PROJECT REFERENCE NO.		SHEET NO.
14CR.10441.4		2 OF 10
STATE PROJECT	F.A. PROJECT NO.	DESCRIPTION
14CR.10441.4		
14CR.20441.6		



050197

# 2009 CONTRACT RESURFACING HAYWOOD COUNTY

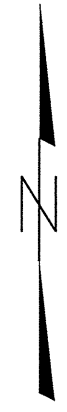
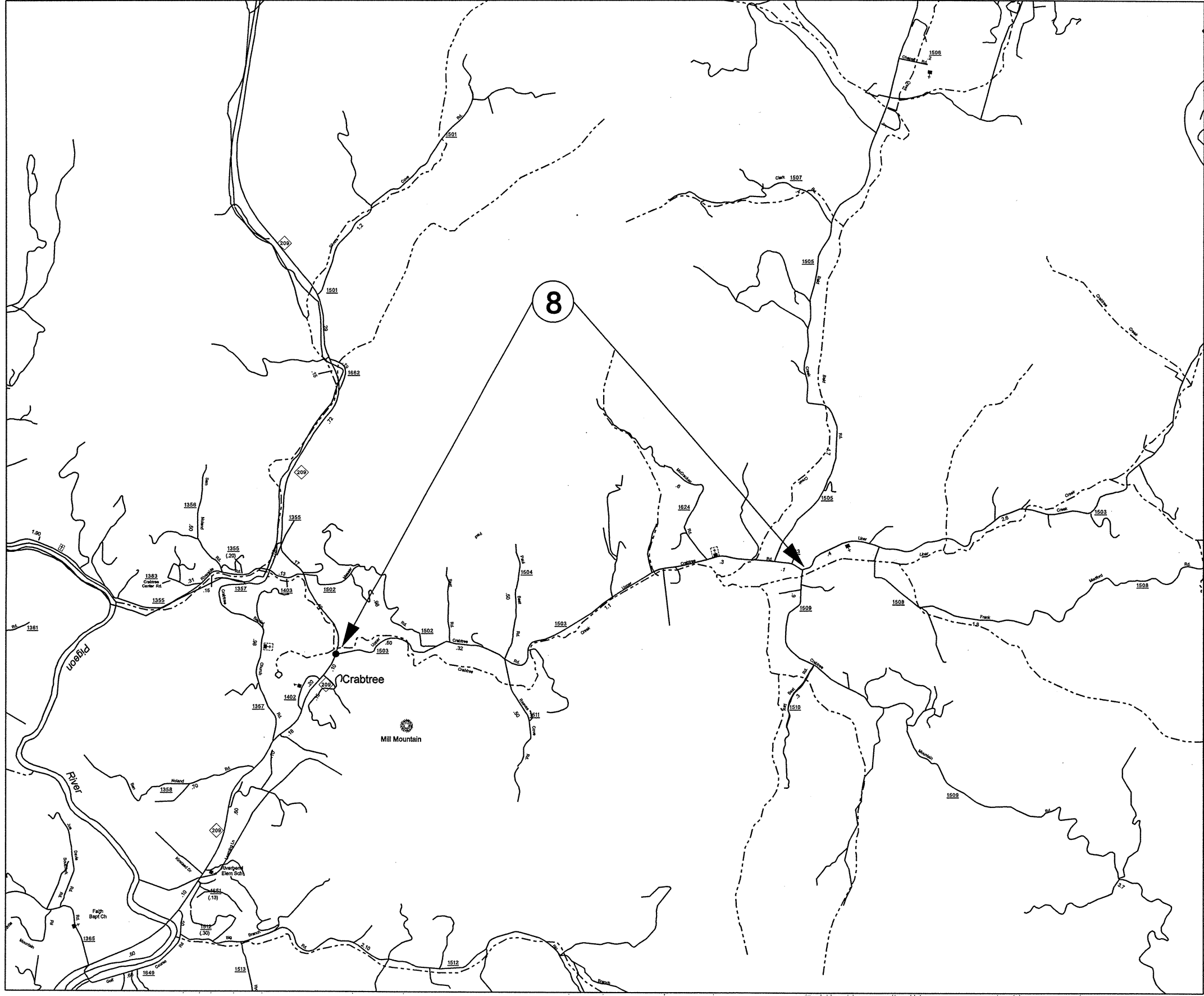
PROJECT REFERENCE NO.		SHEET NO.
14CR.10441.4		3 OF 10
STATE PROJECT	F.A. PROJECT NO.	DESCRIPTION
14CR.10441.4		
14CR.20441.6		



\*\*\*\*\*SYTIME\*\*\*\*\*  
 \*\*\*\*\*EDG\*\*\*\*\*  
 \*\*\*\*\*USERNAME\*\*\*\*\*

# 2009 CONTRACT RESURFACING HAYWOOD COUNTY

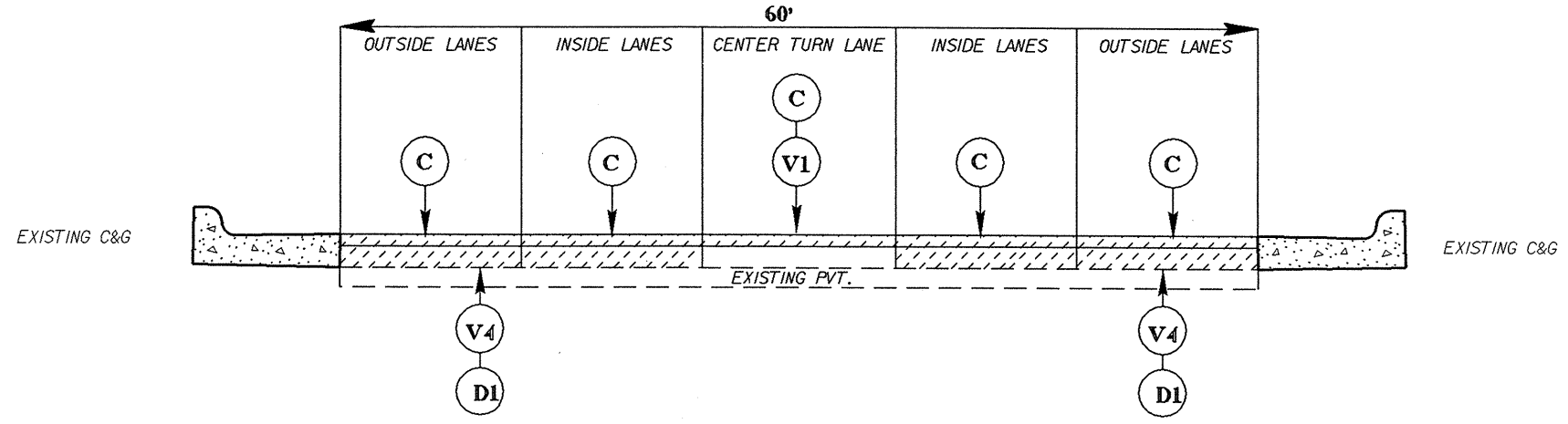
PROJECT REFERENCE NO.		SHEET NO.
14CR.10441.4		4 OF 10
STATE PROJECT	F.A. PROJECT NO.	DESCRIPTION
14CR.10441.4		
14CR.20441.6		



050197

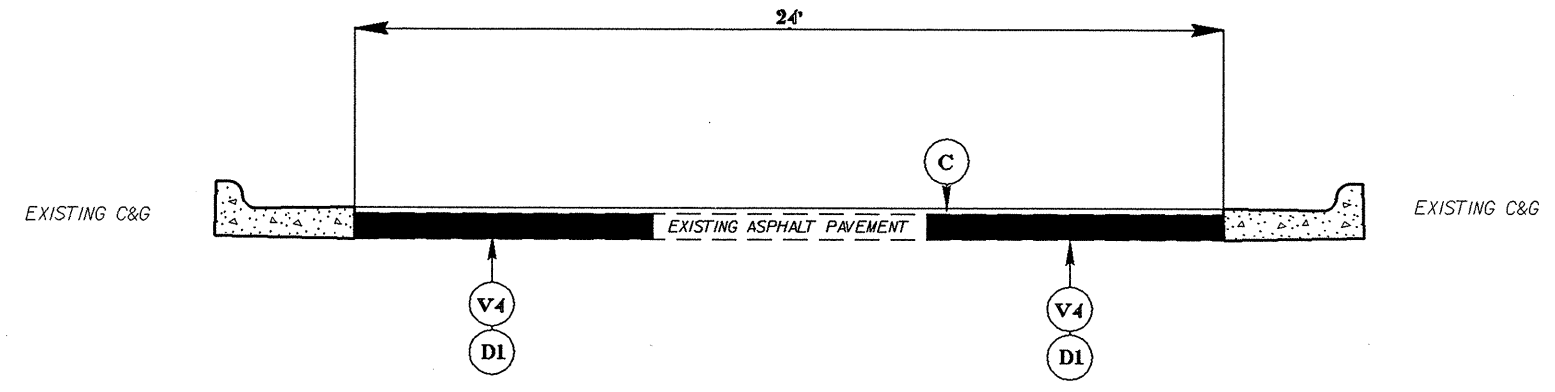
PROJECT REFERENCE NO.		SHEET NO.
14CR10441.4		5 OF 10
STATE PROJECT	F.A. PROJECT NO.	DESCRIPTION
14CR10441.4		
14CR20441.6		

# TYPICAL 1



Note: Continuous 4" milling in outside and inside lanes; 1/2" milling on center turn lane.

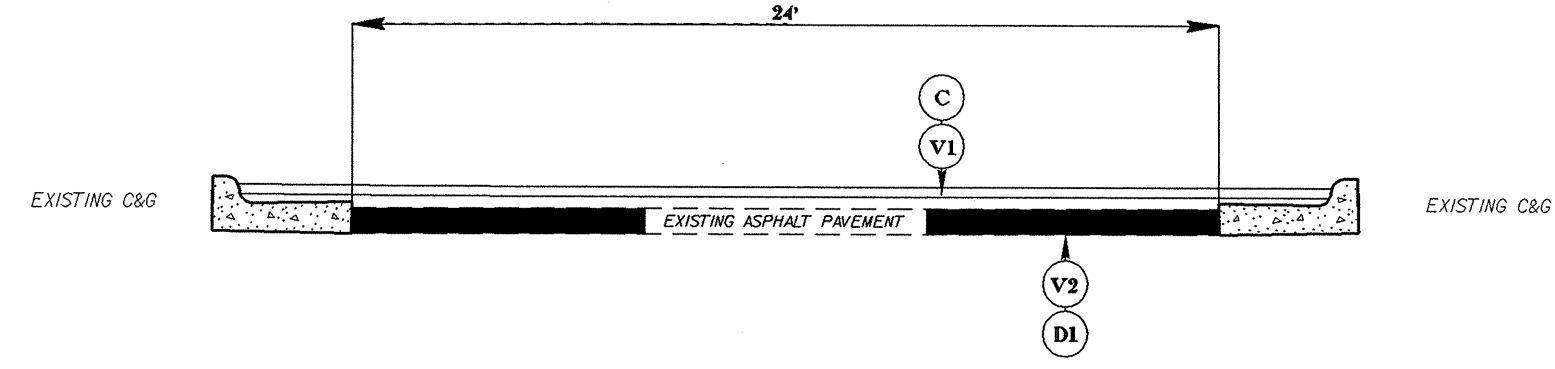
# TYPICAL 2



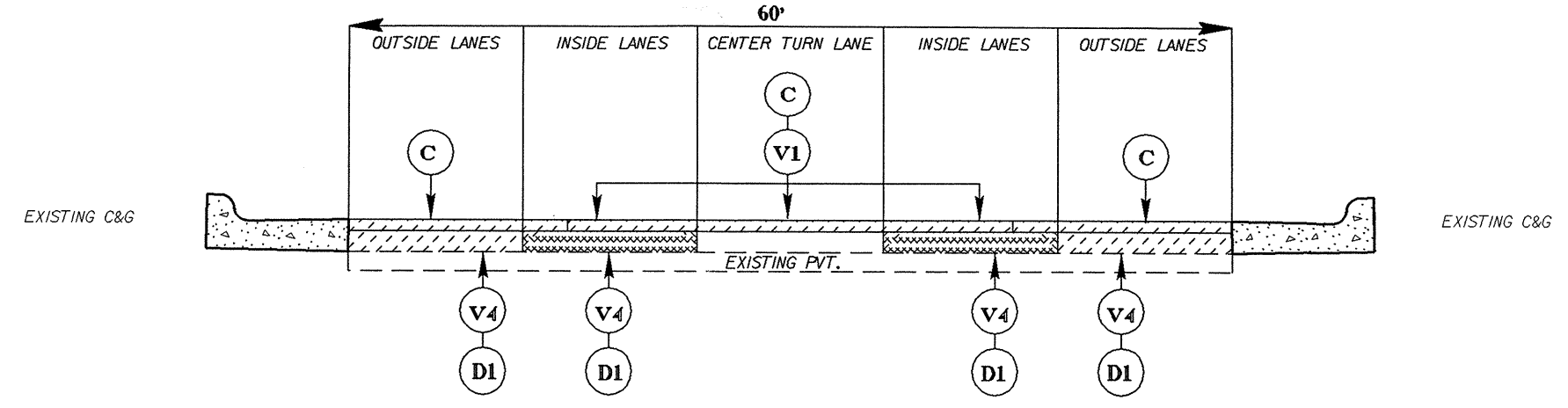
050197

PROJECT REFERENCE NO.		SHEET NO.
14CR10441.4		6 OF 10
STATE PROJECT	P.A. PROJECT NO.	DESCRIPTION
14CR10441.4		
14CR20441.6		

### TYPICAL 3



### TYPICAL 4

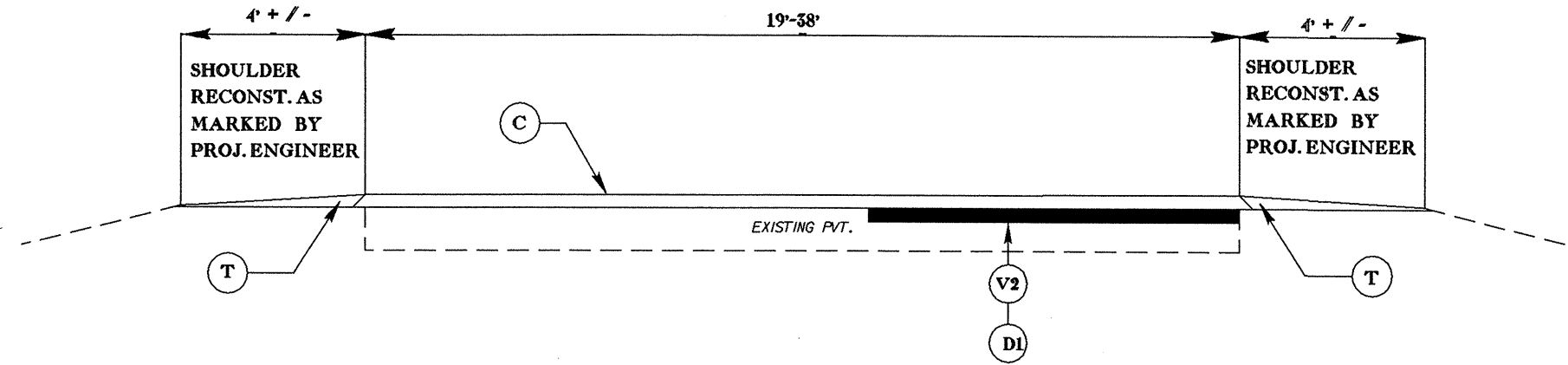


Note: Continuous 4" milling in outside lanes Intermittent 4" milling in inside lanes in distressed areas; 1/2" milling on remainder of inside lanes and center turn lane.

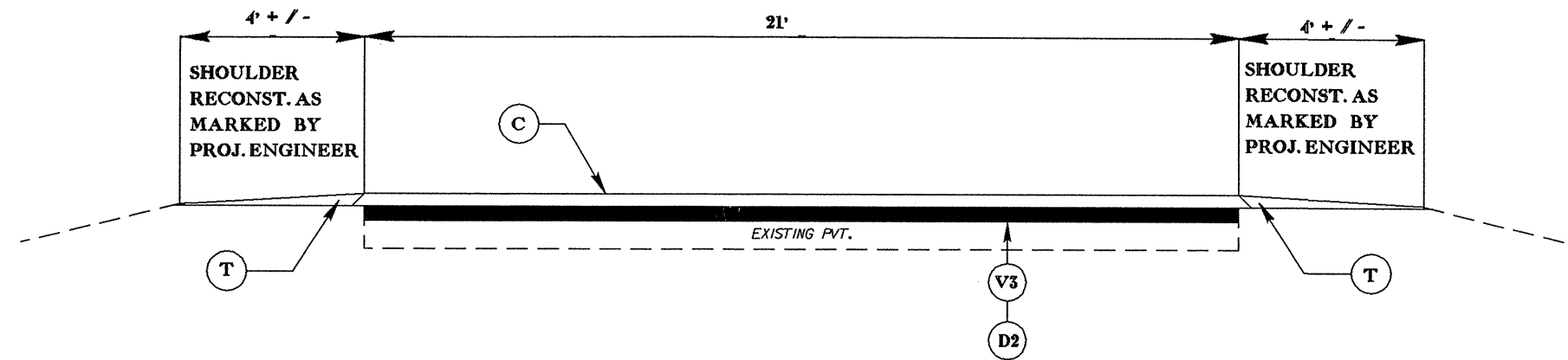
051019

PROJECT REFERENCE NO.		SHEET NO.
14CR10441.4		7 OF 10
STATE PROJECT	F.A. PROJECT NO.	DESCRIPTION
14CR10441.4		
14CR20441.6		

# TYPICAL 5



# TYPICAL 6



050197

PROJECT REFERENCE NO.		SHEET NO.
14CR.10501.2		8 OF 10
STATE PROJECT	F.A. PROJECT NO.	DESCRIPTION
14CR.10501.2		
14CR.305005.2		
14CR.305020.2		
40476		

**SURFACING SCHEDULE**

ITEM NO	DESCRIPTION
C	ASPHALT CONCRETE SURFACE COURSE, TYPE S9.5B, AT AN AVERAGE RATE OF 168 LBS. PER SQ. YD. (1 1/2")
D1	ASPHALT CONCRETE INTERMEDIATE COURSE, TYPE I19.0B, AT AN AVERAGE RATE OF 285 LBS. PER SQ. YD.(2 1/2")
D2	ASPHALT CONCRETE INTERMEDIATE COURSE, TYPE I19.0B, AT AN AVERAGE RATE OF 342 LBS. PER SQ. YD.(3")
V1	MILLING ASPHALT PAVEMENT 1 1/2" IN DEPTH AS DIRECTED BY THE PROJ. ENGINEER.
V2	MILLING ASPHALT PAVEMENT 2 1/2" IN DEPTH AS DIRECTED BY THE PROJECT ENGINEER.
V3	MILLING ASPHALT PAVEMENT 3" IN DEPTH AS DIRECTED BY THE PROJECT ENGINEER.
V4	MILLING ASPHALT PAVEMENT 4" IN DEPTH AS DIRECTED BY THE PROJ. ENGINEER.
T	SHOULDER RECONSTRUCTION WITH ABCM - SEE SPECIAL PROVISIONS

2006 ROADWAY ENGLISH STANDARD DRAWINGS

The following Roadway Standards as appear in "Roadway Standard Drawings" Highway Design Branch - N. C. Department of Transportation - Raleigh, N. C., Dated July 18, 2006 are applicable to this project and by reference hereby are considered a part of these plans:

STD.NO.	TITLE
<b>DIVISION 8 - INCIDENTALS</b>	
840.03	Frame, Grates and Hood - for Use on Standard Catch Basin
840.16	Drop Inlet Frame and Grates - for use with Std. Dwg 840.14 and 840.15
846.01	Concrete Curb, Gutter and Curb & Gutter
848.05	Wheelchair Ramp - Curb Cut
848.06	Wheelchair Ramp - Retrofitting of Existing Curb

\*\*\*\*\*SYTIME\*\*\*\*\*  
 \*\*\*\*\*SYSDWG\*\*\*\*\*  
 \*\*\*\*\*SYSDGN\*\*\*\*\*  
 \*\*\*\*\*SYSDWG\*\*\*\*\*  
 \*\*\*\*\*SYSDGN\*\*\*\*\*  
 \*\*\*\*\*SYSDWG\*\*\*\*\*  
 \*\*\*\*\*SYSDGN\*\*\*\*\*



PROJECT NO.	SHEET NO.	TOTAL NO.
14CR.10441.4, 14CR.20441.6	9	10

### SUMMARY OF QUANTITIES

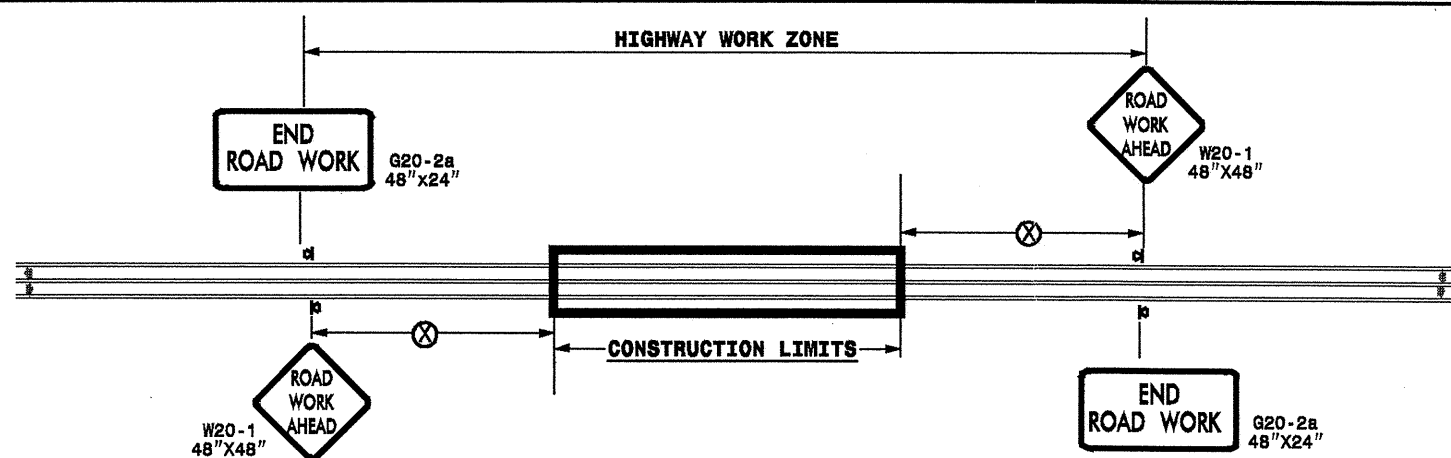
PROJECT NO	COUNTY	MAP NO	ROUTE	DESCRIPTION	TYP NO	FINAL SURFACE TESTING REQUIRES	LENGTH MI	WIDTH FT	SHOULDER RECONSTRUCTION SMI	1 1/2" MILLING SY	4" MILLING SY	3" MILLING SY	2 1/2" MILLING SY	INTER-MEDIATE COURSE, 119.0B TONS	SURFACE COURSE, S9.5B TONS	PG 64-22 PLANT MIX TONS	FRAME WITH GRATE & HOOD, STD 840.03, Type E EA	FRAME WITH TWO GRATES, STD 840.16 EA	REMOVE & REPLACE 2'-6" CONCRETE CURB & GUTTER LF	RETROFIT EXISTING WHEELCHAIR RAMPS EA	WHEELCHAIR RAMPS WITH TRUNCATED DOMES EA	REMOVE & REPLACE 6" CONCRETE DRIVEWAYS SY	ADJ. OF DROP INLET EA	ADJ. OF MANHOLES EA	ADJ. OF METER OR VALVE BOX EA	
14CR.10441.4	Haywood	1	US19	FROM 0.24 MILE WEST OF SR1304 TO PVMT CHNG 77 FT. WEST OF SR1307	1	No	2.67	60		18,052	72,192			10,591	8,131	986	5	1	624	60						
		2	NC110	FROM US19 TO PVMT CHNG 0.16 MILES SOUTH	2	No	0.16	24			2,253			337	199	28								2		
		3	NC110	FROM PVMT CHNG 0.23 MILE SOUTH OF US19 TO PVMT CHNG 157 FT EAST OF SUBSTATION ROAD	3	No	0.49	24		7,000			6,037	903	609	79				12			2	13	10	
		4	US19	FROM MORGAN STREET TO ECL CLYDE	4	No	0.8	69		17,146	15,238			2,254	2,829	276					16			4		
		5	US19 EAST	FROM SR1532 TO MORGAN STREET	5	No	0.75	38	1.5				7,040	1,053	1,475	138										
		6	US19 WEST	FROM SR1532 TO MORGAN STREET	5	No	0.75	38	1.5				7,040	1,104	1,401	136										
		7	US19	FROM JACKSON CO. LINE TO PVMT CHNG 0.32 MILE EAST	6	No	0.32	21	0.64			3,942		708	348	54										
TOTAL FOR PROJ NO. 14CR.10441.4							5.94		3.64	42,198	89,683	3,942	20,117	16,950	14,992	1,697	5	1	624	72	16	148	2	19	10	
14CR.20441.6	Haywood	8	SR1503	FROM NC209 TO SR1509	5		2.1	19	4.2				19,172	2,869	2,065	259										
TOTAL FOR PROJ NO. 14CR.20441.6							2.1		4.2					19,172	2,869	2,065	259									
GRAND TOTAL							8.04		7.84	42,198	89,683	3,942	39,289	19,819	17,057	1,956	5	1	624	72	16	148	2	19	10	

### TRAFFIC CONTROL AND PAINT QUANTITIES

PROJECT NO	COUNTY	MAP NO	ROUTE	DESCRIPTION	4415000000-N	4420000000-N	4435000000-N	4480000000-N	4810000000-E	4820000000-E	4825000000-E	4835000000-E	4840000000-N	4845000000-N												
					FLASHING ARROW PANELS, TYPE C EA	CHANG-EABLE MESSAGE SIGN EA	CONES EA	TMIA EA	4" WHITE PAINT LF	4" YELLOW PAINT LF	8" YELLOW PAINT LF	8" WHITE PAINT LF	12" WHITE PAINT LF	24" WHITE PAINT LF	PAINT MSG SCHOOL EA	PAINT LT ARROW EA	PAINT RT ARROW EA	PAINT STR & RT ARROW EA	PAINT STR ARROW EA	PAINT STR & LT ARROW EA						
14CR.10441.4	Haywood	1	US19	FROM 0.24 MILE WEST OF SR1304 TO PVMT CHNG 77 FT. WEST OF SR1307	2	2	300	1	124,788	108,837	475		360	80	4											
		2	NC110	FROM US19 TO PVMT CHNG 0.16 MILES SOUTH						3,308			254	15				2								
		3	NC110	FROM PVMT CHNG 0.23 MILE SOUTH OF US19 TO PVMT CHNG 157 FT EAST OF SUBSTATION ROAD																						
		4	US19	FROM MORGAN STREET TO ECL CLYDE	2	2	250	1	38,187	35,844			900	1,116	24	62										
		5	US19 EAST	FROM SR1532 TO MORGAN STREET					18,123	11,880		768		108		4				4				2		
		6	US19 WEST	FROM SR1532 TO MORGAN STREET					17,394	11,880		1,134		42		6			4							
		7	US19	FROM JACKSON CO. LINE TO PVMT CHNG 0.32 MILE EAST					10,137	10,137																
TOTAL FOR PROJ NO. 14CR.10441.4					4	4	550	2	208,629	192,150	475	1,902	1,154	1,641	24	152	8		2		4			2		
									400,779		2,377							168								
14CR.20441.6	Haywood	8	SR1503	FROM NC209 TO SR1509					44,352	66,528																
TOTAL FOR PROJ NO. 14CR.20441.6									44,352	66,528																
									110,880																	
GRAND TOTAL					4	4	550	2	252,981	258,678	475	1,902	1,154	1,641	24	152	8		2		4			2		
									511,659		2,377							168								



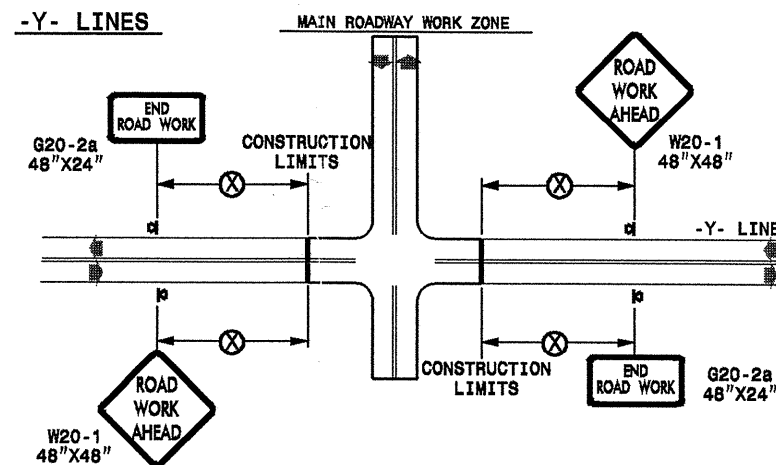
**TWO-WAY UNDIVIDED \*\* (L-LINES)**



POSTED SPEED LIMIT (M.P.H.)	RECOMMENDED MINIMUM SIGN SPACING
≤ 50	500'
≥ 55	1000'

STATE OF NORTH CAROLINA  
DEPT. OF TRANSPORTATION  
DIVISION OF HIGHWAYS  
RALEIGH, N.C.

**ROADWAYS INTERSECTING ALONG 2 WAY UNDIVIDED WORK ZONE (Y-LINES)**



DETAIL DRAWING  
FOR TWO-WAY UNDIVIDED  
WORK ZONE WARNING SIGNS

**GENERAL NOTES**

- USE FLUORESCENT ORANGE SHEETING (TYPE VII OR HIGHER) ON ALL ADVANCE WORK ZONE SIGNS.
- DO NOT INSTALL ADVANCE WARNING SIGNS MORE THAN 3 DAYS PRIOR TO BEGINNING OF WORK.
- ALL SIGN SPACING DIMENSIONS ARE APPROXIMATE, FIELD ADJUST AS NECESSARY OR AS DIRECTED.
- USE PORTABLE WORK ZONE SIGNS ONLY WITH PORTABLE WORK ZONE SIGN STANDS SPECIFICALLY DESIGNED FOR ONE ANOTHER. PORTABLE WORK ZONE SIGNS MAY BE ROLL UP OR APPROVED COMPOSITE.
- PROVIDE PORTABLE WORK ZONE SIGN STANDS, PORTABLE SIGNS AND SIGN SHEETING WHICH ARE LISTED ON THE NORTH CAROLINA DEPARTMENT OF TRANSPORTATION'S APPROVED PRODUCT LIST OR ACCEPTED AS TRAFFIC QUALIFIED BY THE TRAFFIC CONTROL UNIT.
- \*\* TWO-WAY UNDIVIDED ADVANCE WARNING SIGN CONFIGURATION MAY BE USED ON URBAN MULTI-LANE FACILITIES WHERE CONDITIONS LIMIT THE USE OF DUAL MOUNTED SIGNS AS DETERMINED BY THE ENGINEER.

**LEGEND**

☒ PORTABLE SIGN

➔ DIRECTION OF TRAFFIC FLOW

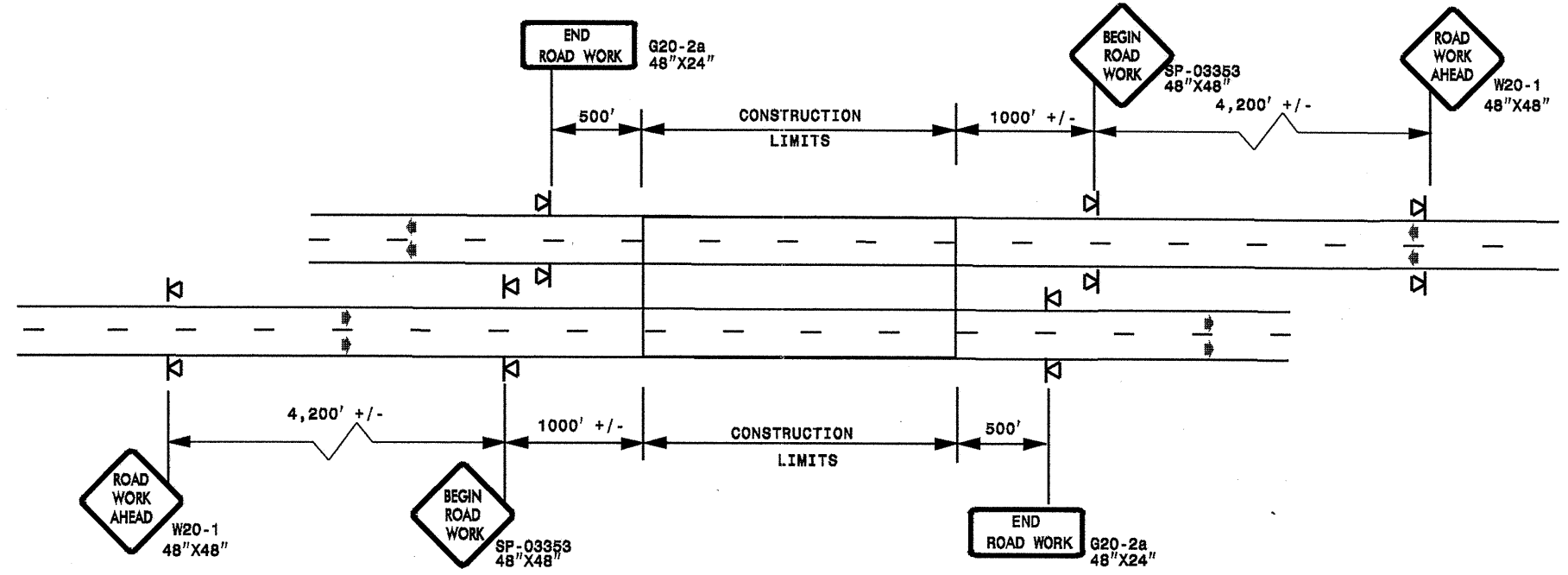
SHEET 1 OF 1

APPROVED: _____ DATE: _____	DETAIL DRAWING FOR TWO-WAY UNDIVIDED ADVANCED WORK ZONE WARNING SIGNS		REVISIONS	
SEAL			SCALE: NONE	7-98
	DWG. BY:	10-98	03/04	
	DESIGN BY:	01/01	11/04	
	REVIEWED BY:			

22-DEC-2009 17:29  
 si\_signing\resur-fg\dwg\_030509\resur-fg\dwg\_030509\divid\c202535a-b\_14cr10441x2\_2woyundivurbfrwys\july2006\_portable.dgn  
 AT WZTC237502

**ADVANCE WORK ZONE WARNING SIGNING FOR FREEWAYS (4 LANES OR GREATER)**

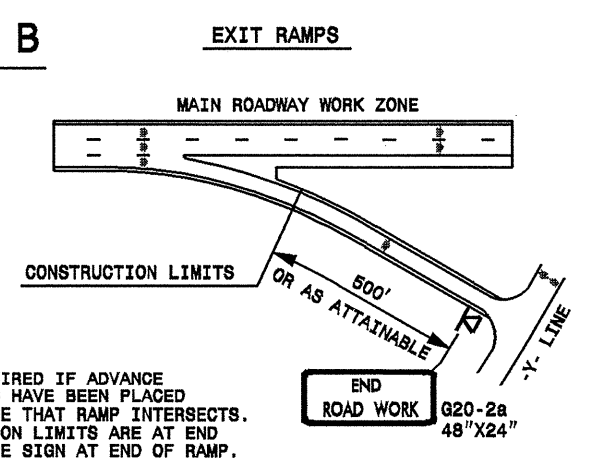
**DETAIL A**



STATE OF NORTH CAROLINA  
 DEPT. OF TRANSPORTATION  
 DIVISION OF HIGHWAYS  
 RALEIGH, N.C.

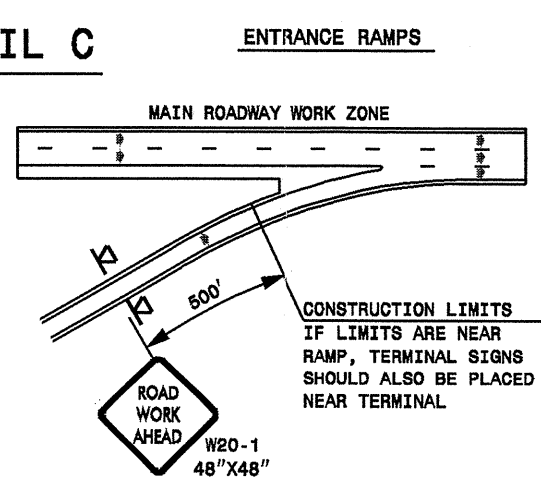
**ROADWAYS INTERSECTING ALONG FREEWAY WORK ZONE (Y-LINES)**

**DETAIL B**



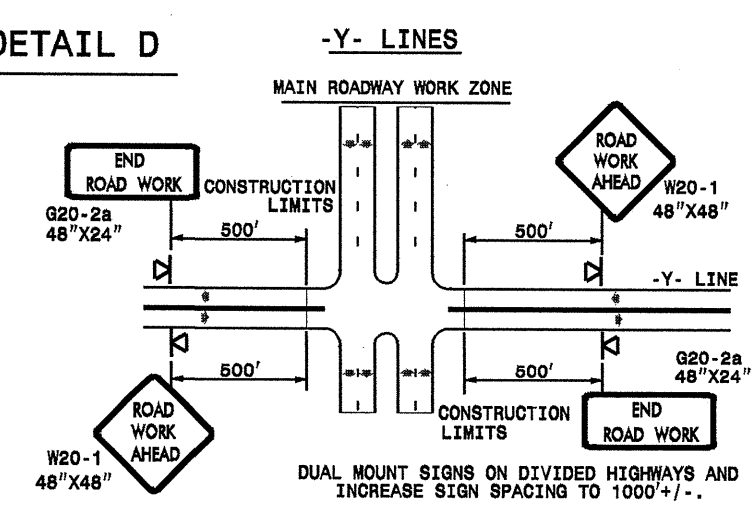
NOTE:  
 SIGN NOT REQUIRED IF ADVANCE WARNING SIGNS HAVE BEEN PLACED ALONG -Y- LINE THAT RAMP INTERSECTS. IF CONSTRUCTION LIMITS ARE AT END OF RAMP, PLACE SIGN AT END OF RAMP.

**DETAIL C**



CONSTRUCTION LIMITS IF LIMITS ARE NEAR RAMP, TERMINAL SIGNS SHOULD ALSO BE PLACED NEAR TERMINAL.

**DETAIL D**



DUAL MOUNT SIGNS ON DIVIDED HIGHWAYS AND INCREASE SIGN SPACING TO 1000'+/-.

**DETAIL DRAWING FOR FREEWAYS WORK ZONE WARNING SIGNS (SHORT-DURATION LANE CLOSURES)**

**GENERAL NOTES**

- USE FLUORESCENT ORANGE SHEETING (TYPE VII OR HIGHER) ON ALL ADVANCE WORK ZONE SIGNS.
- DO NOT INSTALL ADVANCE WARNING SIGNS MORE THAN 3 DAYS PRIOR TO BEGINNING OF WORK.
- ALL SIGN SPACING DIMENSIONS ARE APPROXIMATE, FIELD ADJUST AS NECESSARY OR AS DIRECTED.
- USE PORTABLE WORK ZONE SIGNS ONLY WITH PORTABLE WORK ZONE SIGN STANDS SPECIFICALLY DESIGNED FOR ONE ANOTHER. PORTABLE WORK ZONE SIGNS MAY BE ROLL UP OR APPROVED COMPOSITE.
- PROVIDE PORTABLE WORK ZONE SIGN STANDS, PORTABLE SIGNS AND SIGN SHEETING WHICH ARE LISTED ON THE NORTH CAROLINA DEPARTMENT OF TRANSPORTATION'S APPROVED PRODUCT LIST OR ACCEPTED AS TRAFFIC QUALIFIED BY THE TRAFFIC CONTROL UNIT.
- \*\* TWO-WAY UNDIVIDED ADVANCE WARNING SIGN CONFIGURATION MAY BE USED ON MULTI-LANE FACILITIES WHERE CONDITIONS LIMIT THE USE OF DUAL MOUNTED SIGNS AS DETERMINED BY THE ENGINEER.

**LEGEND**

◀ PORTABLE SIGN

➔ DIRECTION OF TRAFFIC FLOW

SHEET 1 OF 1

APPROVED: \_\_\_\_\_ DATE: \_\_\_\_\_

SCALE: NONE

DATE: \_\_\_\_\_

DWG. BY: \_\_\_\_\_

DESIGN BY: \_\_\_\_\_

REVIEWED BY: \_\_\_\_\_

DETAIL DRAWING FOR FREEWAYS WORK ZONE WARNING SIGNS

REVISIONS	
7-98	10/01
10-98	03/04
01/01	11/04

SEAL

22-DEC-2009 17:30  
 s:\signing\resur\facimg\_030509\resur\facimg2010\dlv4\c202535a-b\_14cr0444x2\_fr ee4lanes\c202535a-b\_14cr0444x2\_fr ee4lanes\portable.dgn  
 peymore AT WZTC237502