

TIP NO. U-2826A	SHEET NO. SIGN-1
APPROVED: _____	
DATE: _____	
SEAL	

**STATE OF NORTH CAROLINA
DEPARTMENT OF TRANSPORTATION**

**SIGNING PLANS
FORSYTH COUNTY**

**LOCATION: US 52, REPLACEMENT OF BRIDGE NO. 256 AND 257 OVER
THE NORFOLK AND SOUTHERN RAILROAD IN WINSTON-SALEM**

T.I.P.: U-2826A

CONTRACT: C202129

ROADWAY STANDARD DRAWING

THE FOLLOWING ROADWAY STANDARDS AS APPEAR IN "ROADWAY STANDARD DRAWINGS" - PROJECT SERVICES UNIT - N.C. DEPARTMENT OF TRANSPORTATION - RALEIGH, N.C., DATED JULY 2006 ARE APPLICABLE TO THIS PROJECT AND BY REFERENCE HEREBY ARE CONSIDERED A PART OF THESE PLANS:

STD. NO.	TITLE
901.10	TYPE 'A' SIGNS
901.20	TYPE 'B' SIGNS
901.30	VHB TAPE CONSTRUCTION - FOR TYPE 'A' SIGNS
901.40	VHB TAPE CONSTRUCTION - FOR TYPE 'B' SIGNS
901.50	ARROWS AND SHIELDS
901.70	SIGN STRINGERS AND SUPPORT SPACING
901.80	SIGN MOUNTING DETAILS - FOR TYPE A AND TYPE B SIGNS
903.10	GROUND MOUNTED SIGN SUPPORTS
904.10	ORIENTATION OF GROUND MOUNTED SIGNS
904.20	SECONDARY SIGN MOUNTING
904.40	MILEPOST AND PLACEMENT
904.50	MOUNTING OF TYPE 'D', 'E' AND 'F' SIGNS ON 'U' CHANNEL POSTS

GENERAL NOTES

- . SIGNS FURNISHED BY STATE
- . ALL TYPE 'D' SIGNS SHALL BE MOUNTED ON TWO U-CHANNEL POSTS UNLESS OTHERWISE INDICATED ON THE PLANS.
- . IF REMOVAL OR RELOCATION OF SIGNS ON PRIVATE STREET (NON-STATE MAINTAINED) IS REQUIRED DUE TO CONSTRUCTION, THE CONTRACTOR SHALL INFORM THE ENGINEER. THE WORK WILL BE COMPLETED BY OTHERS.
- . SIGNING PLANS DO NOT INCLUDE TEMPORARY CONSTRUCTION SIGNING OR PAVEMENT MARKINGS. SEE TRAFFIC CONTROL PLANS.
- . WHEN NOT STATIONED OR DIMENSIONED ON PLANS, ALL 'E' AND 'F' SIGNS SHALL BE FIELD LOCATED BY THE ENGINEER
- . ALL EXISTING SIGNS ON "U" CHANNEL POST WITHIN THE PROJECT LIMITS SHALL BE REMOVED AND DISPOSED OF UNLESS OTHERWISE NOTED ON PLANS.
- . WHEN EXISTING SIGNS ARE REMOVED AND INSTALLED ON NEW SUPPORTS, THE RE-ERECTION SHALL IMMEDIATELY FOLLOW THE REMOVAL.
- . THE BACKGROUND FOR TYPE E & F SIGNS SHALL BE TYPE C REFLECTIVE SHEETING.
- . DO NOT BEGIN FABRICATION FOR TYPES A & B SIGNS MOUNTED ON OVERHEAD STRUCTURES OR STEEL SUPPORTS UNTIL "S" DIMENSIONS HAVE BEEN FIELD VERIFIED.
- . SEE ROADWAY PLANS FOR GUARD/GUIDE RAIL DETAILS.

SUMMARY OF QUANTITIES

ITEM NO.	DESC. NO.	SECT. NO.	ITEM DESCRIPTION	QUANTITY	UNIT
4048000000	902		REINFORCED CONCRETE SIGN FOUNDATION	4	C.Y.
4057000000	SP		OVERHEAD FOOTING	24	C.Y.
4066000000	903		SUPPORTS, SIMPLE STEEL BEAM	2296	LB.
4072000000	903		SUPPORTS, 3 LB STEEL U-CHANNEL	555	L.F.
4078000000	903		SUPPORTS, 2 LB STEEL U-CHANNEL	2	EA.
4082000000	903		SUPPORTS, WOOD	440	L.F.
4082100000	SP		SUPPORTS, OVERHEAD SIGN STRUCTURE AT STATION "9+80 NBL -L-"	1	L.S.
4082100000	SP		SUPPORTS, OVERHEAD SIGN STRUCTURE AT STATION "20+00 NBL -L-"	1	L.S.
4096000000	904		SIGN ERECTION, TYPE D	7	EA.
4102000000	904		SIGN ERECTION, TYPE E	23	EA.
4108000000	904		SIGN ERECTION, TYPE F	3	EA.
4110000000	904		SIGN ERECTION, TYPE A (GROUND MOUNTED)	11	EA.
4110000000	904		SIGN ERECTION, TYPE B (GROUND MOUNTED)	7	EA.
4114000000	904		SIGN ERECTION, MILEMARKERS	2	EA.
4116100000	904		SIGN ERECTION, OVERLAY (GROUND MOUNTED)	1	EA.
4116100000	904		SIGN ERECTION, RELOCATE SIGN TYPE A (GROUND MOUNTED)	3	EA.
4116100000	904		SIGN ERECTION, RELOCATE SIGN TYPE E	2	EA.
4116100000	904		SIGN ERECTION, RELOCATE SIGN TYPE F	1	EA.
4149000000	907		DISPOSAL OF SIGN SYSTEM, OVERHEAD	1	EA.
4152000000	907		DISPOSAL OF SIGN SYSTEM, STEEL BEAM	8	EA.
4155000000	907		DISPOSAL OF SIGN SYSTEM, U-CHANNEL	20	EA.
4158000000	907		DISPOSAL OF SIGN SYSTEM, WOOD	11	EA.

PLAN PREPARED BY: N.C.D.O.T. SIGNING AND DELINEATION UNIT

RON KING, P.E. STATE SIGNING & DELINEATION ENGINEER
 STACEY JOHNS SIGNING & DELINEATION DESIGN ENGINEER

INDEX

SHEET NO.	DESCRIPTION
SIGN-1	NOTES, QUANTITIES
SIGN-2	SUPPORT CHART SHEET
SIGN-3-6	GROUND MOUNT SUPPORT INFORMATION
SIGN-7-8	OVERHEAD SIGN STRUCTURE SHEETS
SIGN-9-11	SIGN DESIGN A & B SHEETS
SIGN-12	SIGN DESIGN D SHEET
SIGN-13	E, F & MILEMARKER SHEET
SIGN-14-18	SIGN DETAIL SHEETS

22-OCT-2009 09:14 P:\TIPProj\ec-TECU\2826A\Traffic\Signing\CADD\Signing Layout Plans\signing\U2826A11.tle.dgn

TIP NO. U-2826A	SHEET NO. SIGN-2
APPROVED: _____	
DATE: _____	
SEAL	

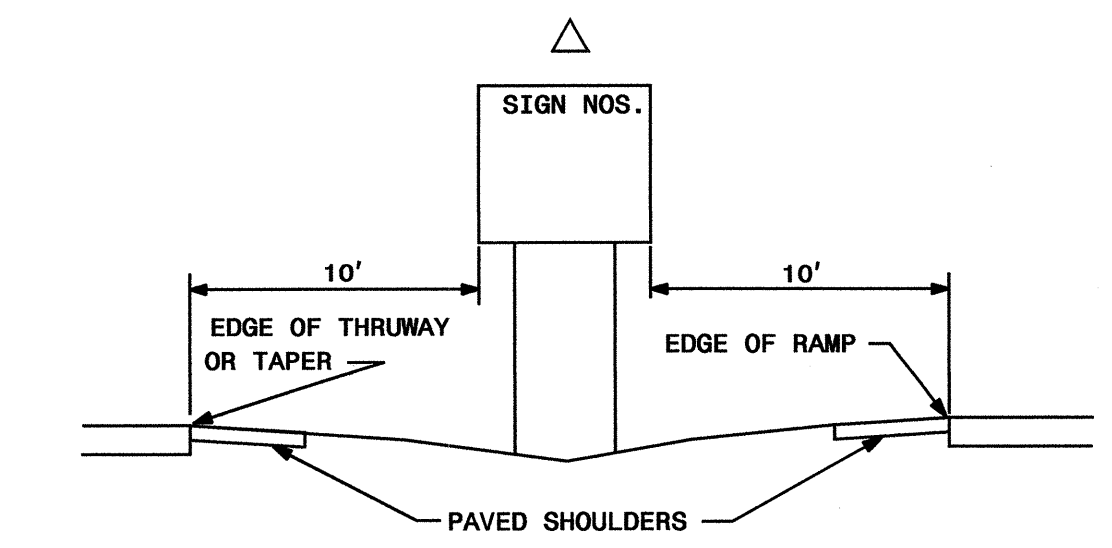
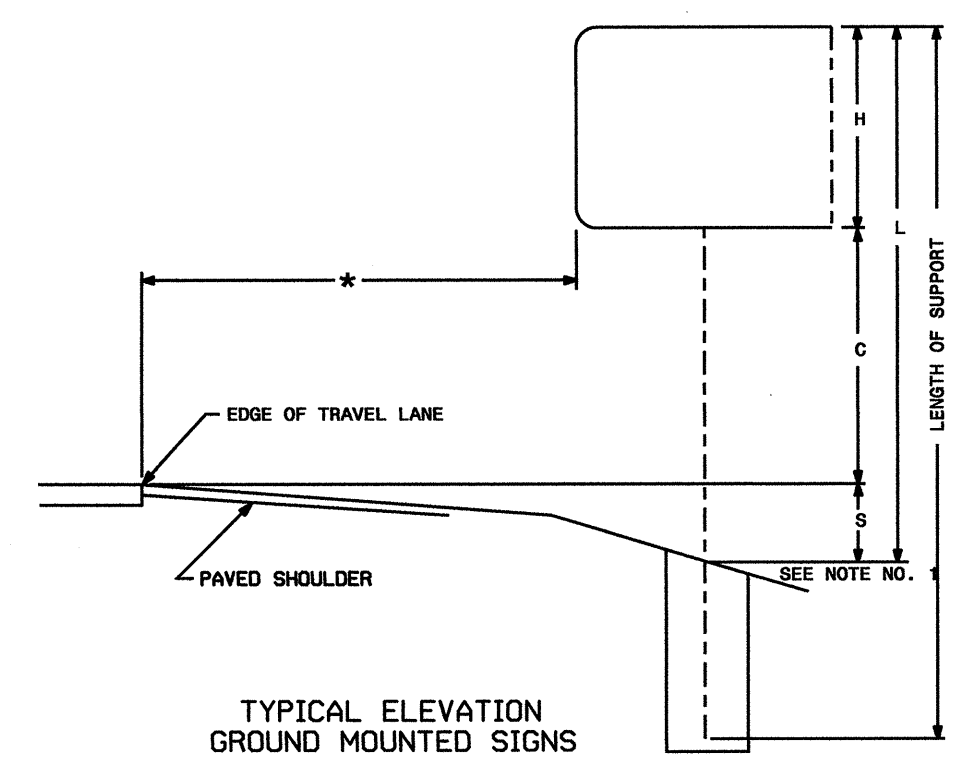


SIGN NO.	SIGN TYPE	SIGN SIZE (in.)			ROADWAY STATION	NO. OF SUP.	BEAM SECTION	SUPPORT TYPE BA OR S	ATTACH METHOD	MOUNTING METHOD	HORIZ. CLR.* (ft.)	LENGTH (ft)			LEFT SUPPORT (ft)			CENTER SUPPORT (ft)			RIGHT SUPPORT (ft)			FOOTING DIAMETER (ft.)	FOOTING DEPTH (ft.)	B/A SUPPORT WEIGHTS (lbs.)	SIMPLE SUPPORT WEIGHTS (lbs.)	REINF. FTGS. (c.y.)	FIELD VERIFIED SEE NOTE 2 (mm/dd/yy)
		w	x	h								SNS HT H	MTG HT C	EMBED-MENT	S	L	TOTAL LENGTH	S	L	TOTAL LENGTH	S	L	TOTAL LENGTH						
101A	B	96	X	30	30+00	2	W6x9	S	1-R	N/A	18.00	7.50	7.00	5.5	3.27	17.77	23.27	0.00	0.00	0.00	3.59	18.09	23.59	1.5	6.0	0.00	562.32	0.79	
101B	A	144	X	90																									
102A	B	102	X	30	53+00	2	W6x9	S	1-R	N/A	10.23	5.00	7.00	5	3.86	15.86	20.86	0.00	0.00	0.00	6.94	18.94	23.94	1.5	5.5	0.00	403.23	0.72	
102B	A	126	X	60																									
103A	B	96	X	30	56+00	2	W6x12	S	1-R	N/A	10.20	8.50	7.00	5.5	3.60	19.10	24.60	0.00	0.00	0.00	4.96	20.46	25.96	1.5	6.0	0.00	606.72	0.79	
103B	A	108	X	102																									
104	A	126	X	60	58+00	2	W6x9	S	N/A	N/A	10.20	5.00	7.00	4	3.70	15.70	19.70	0.00	0.00	0.00	6.78	18.78	22.78	1.5	4.5	0.00	382.32	0.59	
105A	B	102	X	30	63+00	2	W6x9	S	1-R	N/A	10.20	5.00	7.00	4.5	1.84	13.84	18.34	0.00	0.00	0.00	3.09	15.09	19.59	1.5	5	0.00	341.41	0.65	
105B	A	126	X	60																									

TOTAL 0.00 TOTAL 2296.0 TOTAL 3.54
 USE: 0 2296 4

NOTES

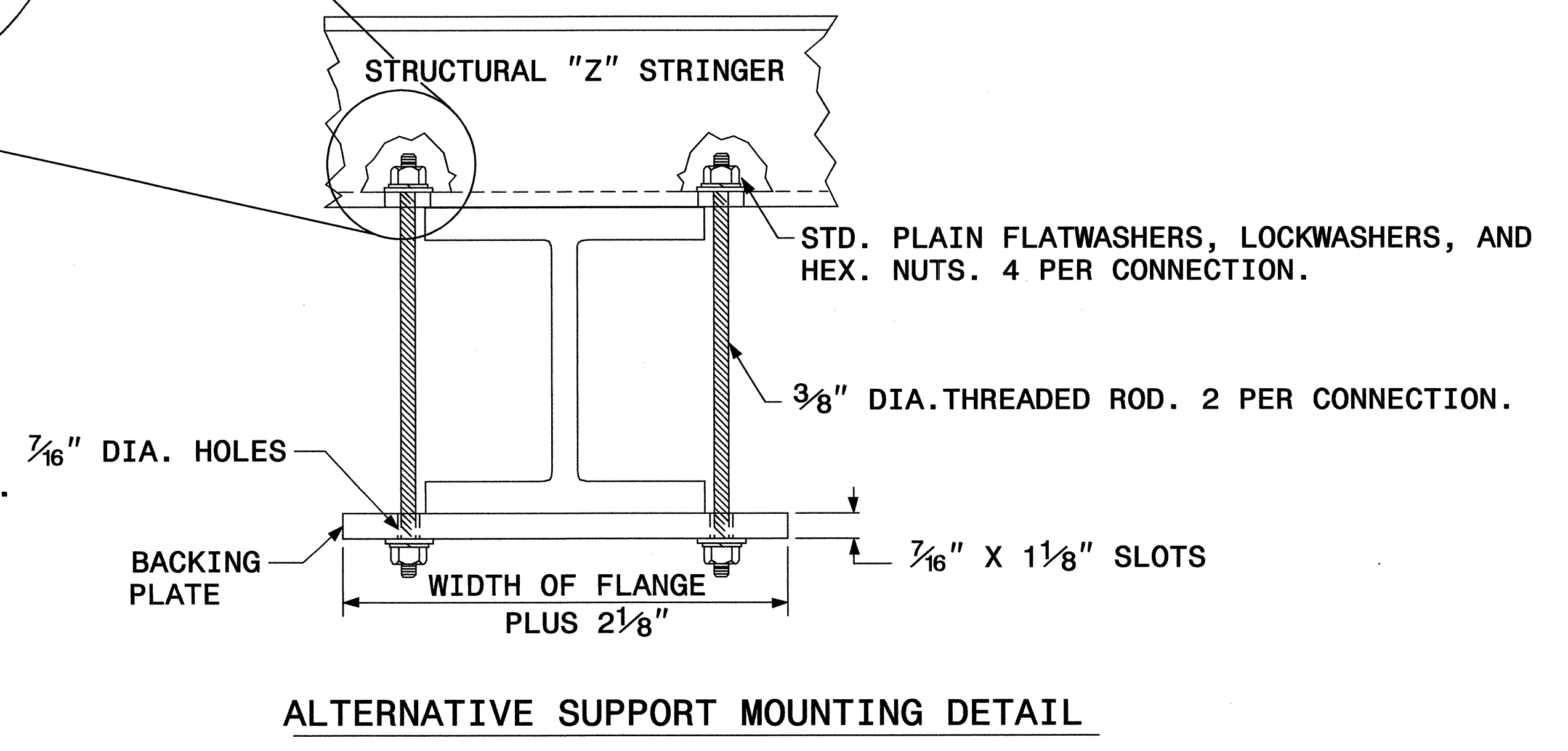
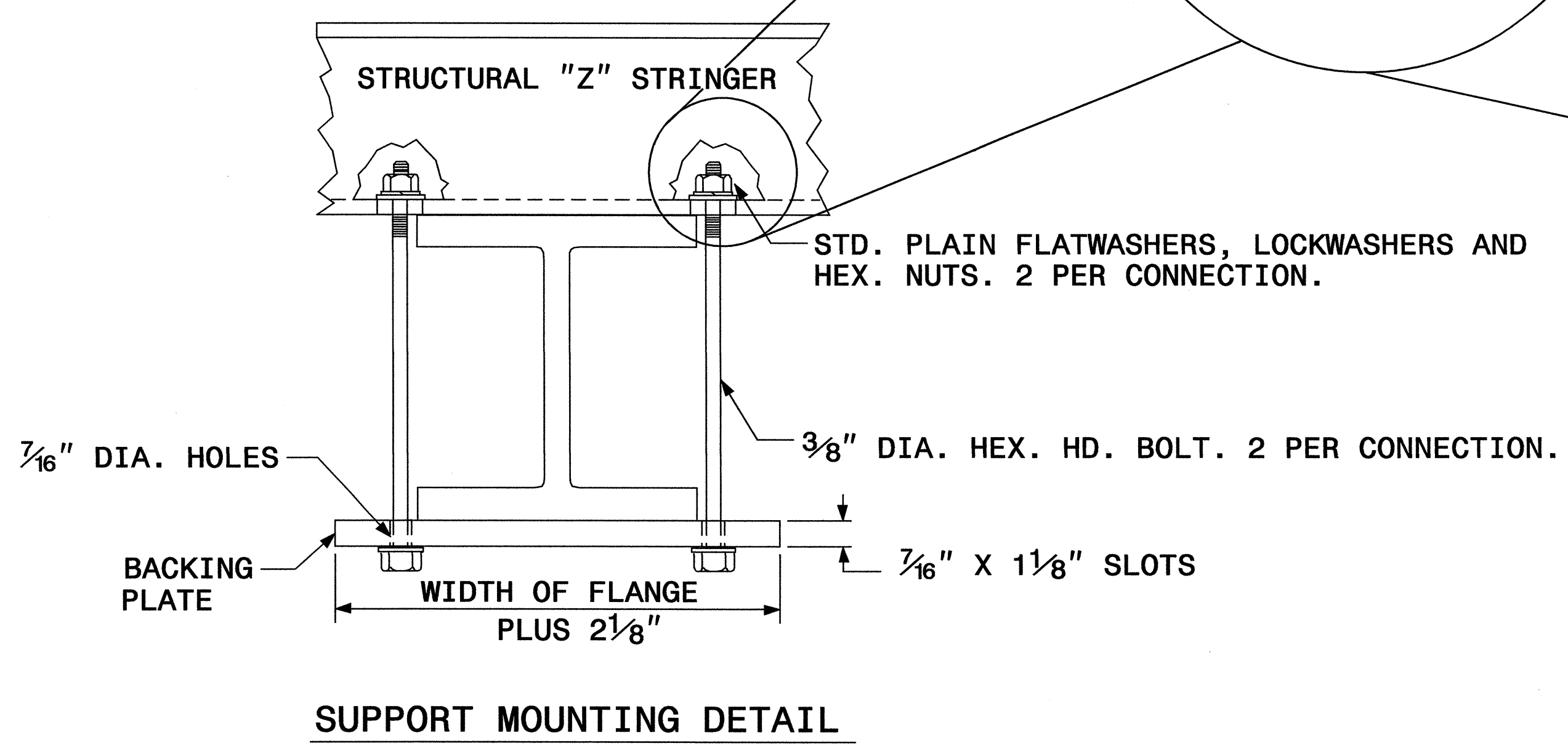
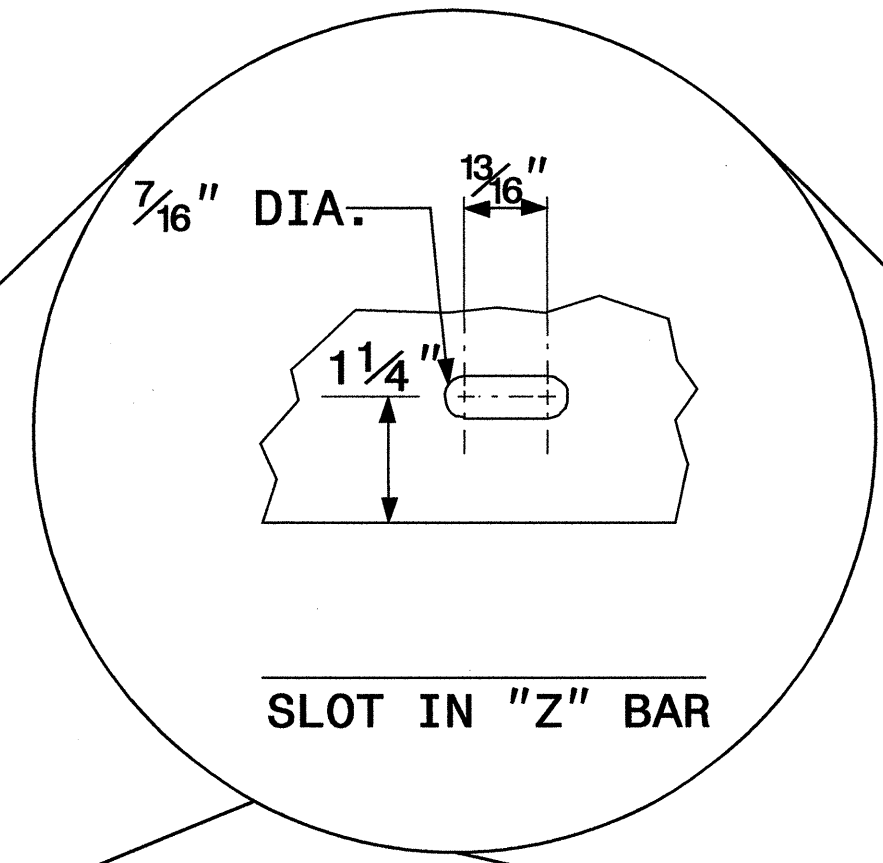
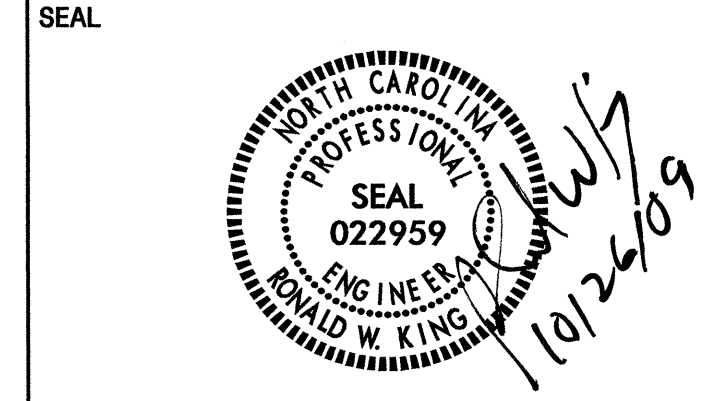
- DIMENSION "S" REPRESENTS AN INCREASE (+), OR A DECREASE (-) IN POLE LENGTH, RELATIVE TO THE ELEVATION OF THE EDGE OF PAVEMENT.
- FIELD VERIFICATIONS SHALL BE REQUIRED FOR ALL SUPPORTS, SEE (*) ARTICLE 903-3. FABRICATORS SHALL BE AISC CERTIFIED IN CATEGORY 1, SEE (*) ARTICLE 1072-1. (*) = N.C.D.O.T. STANDARD SPECIFICATIONS FOR ROADS AND STRUCTURES
- PLAN LOCATIONS FOR EXISTING UTILITIES ARE BASED ON THE BEST AVAILABLE INFORMATION AND, THEREFORE MAY NOT BE PRECISELY ACCURATE. THEREFORE, IT IS INCUMBENT UPON THE CONTRACTOR TO DETERMINE THE EXACT LOCATION OF UTILITIES BEFORE BEGINNING WORK IN A LOCATION.



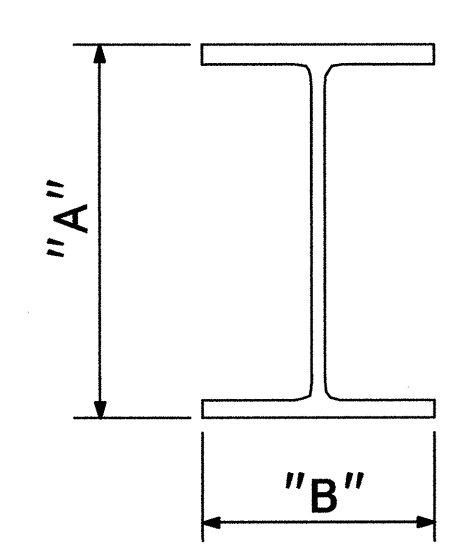
TYPE "A" AND TYPE "B" GROUND MOUNTED SIGNS

I4-OCT-2009 10:47 B:\johns\2826a\traffic\signing\layout\plans\signing\2826atitle.dgn

APPROVED: _____
DATE: _____

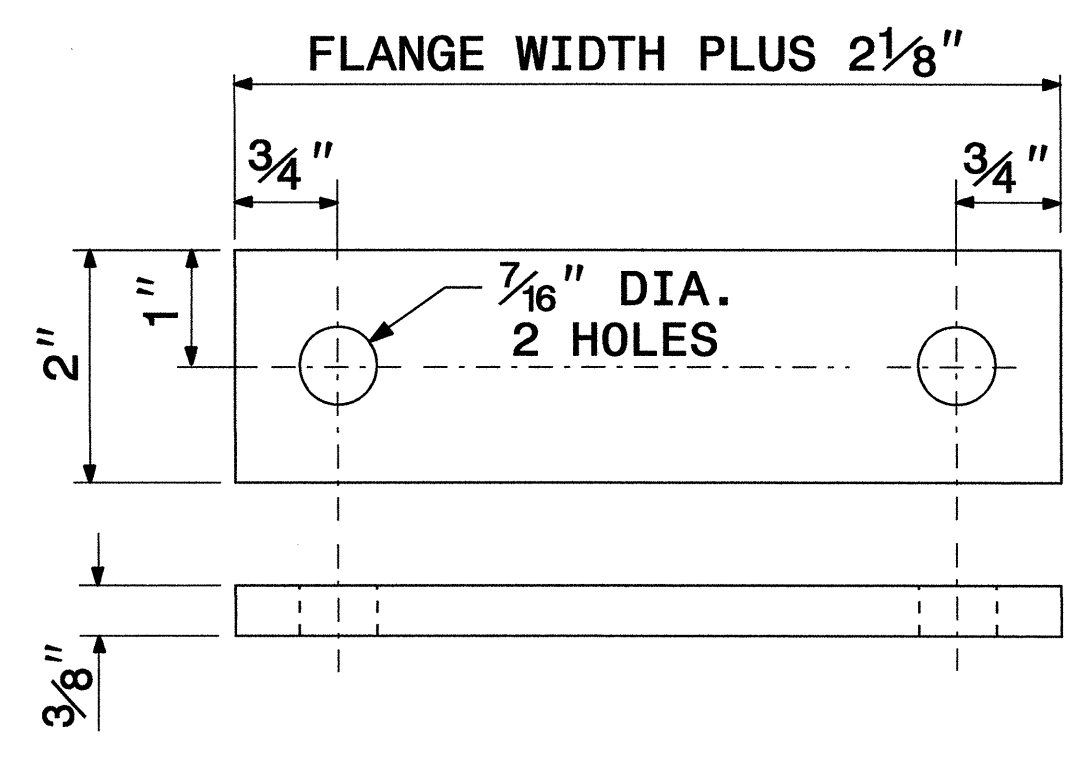


SIGN SUPPORTS SECTION DIMENSIONS



SECTION	A	B
S3 X 5.7	3"	2 3/8"
S4 X 7.7	4"	2 5/8"
W6 X 9	6"	4"
W6 X 12	6"	4"
W6 X 16	6 1/4"	4"
W8 X 18	8 1/8"	5 1/4"
W8 X 21	8 1/4"	5 1/4"
W10 X 22	10 1/8"	5 3/4"
W10 X 26	10 3/8"	5 3/4"
W12 X 26	12 1/4"	6 1/2"
W14 X 30	13 7/8"	6 3/4"
W16 X 31	15 7/8"	5 1/2"
W18 X 35	17 3/4"	6"
W18 X 40	17 7/8"	6"
W21 X 44	20 5/8"	6 1/2"

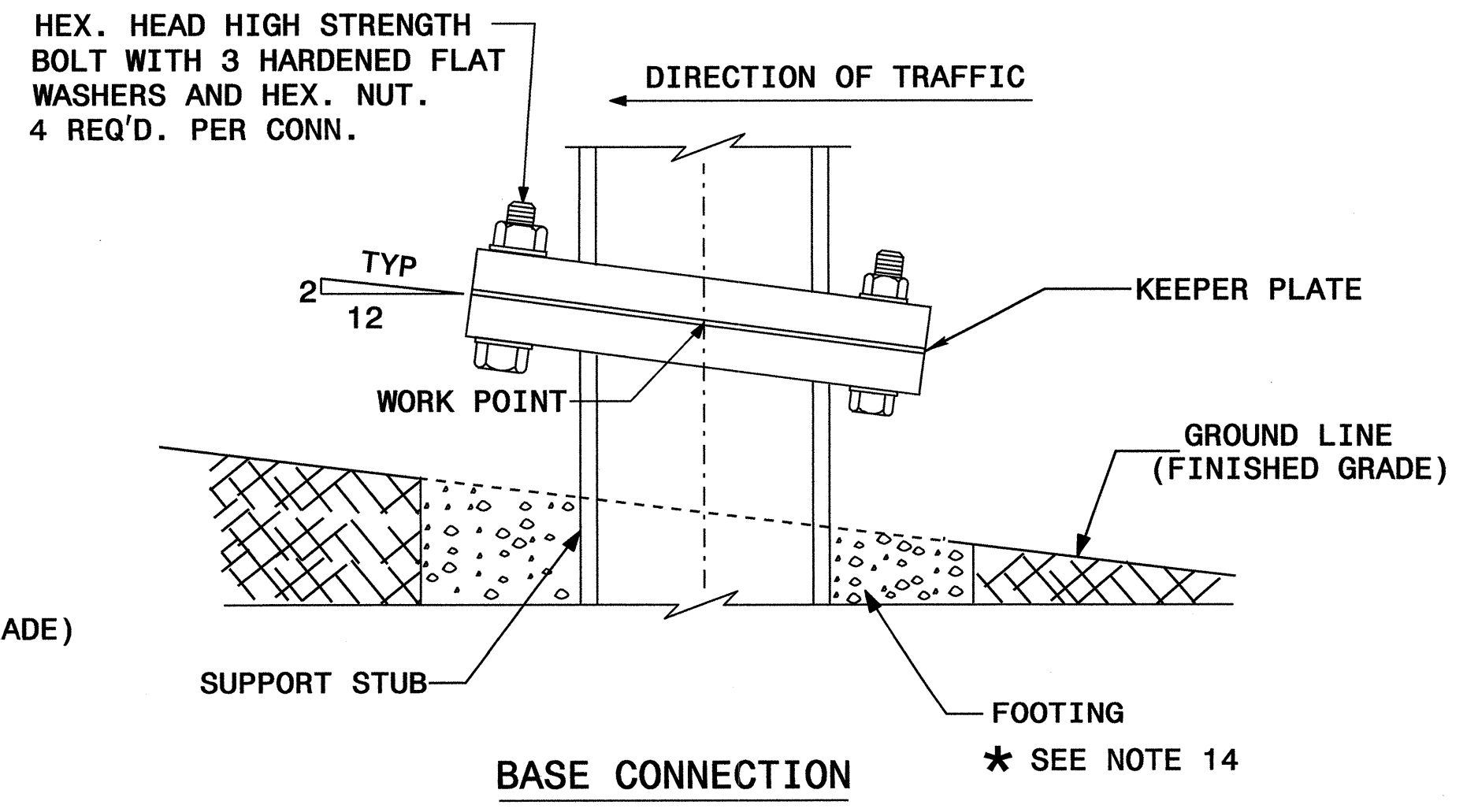
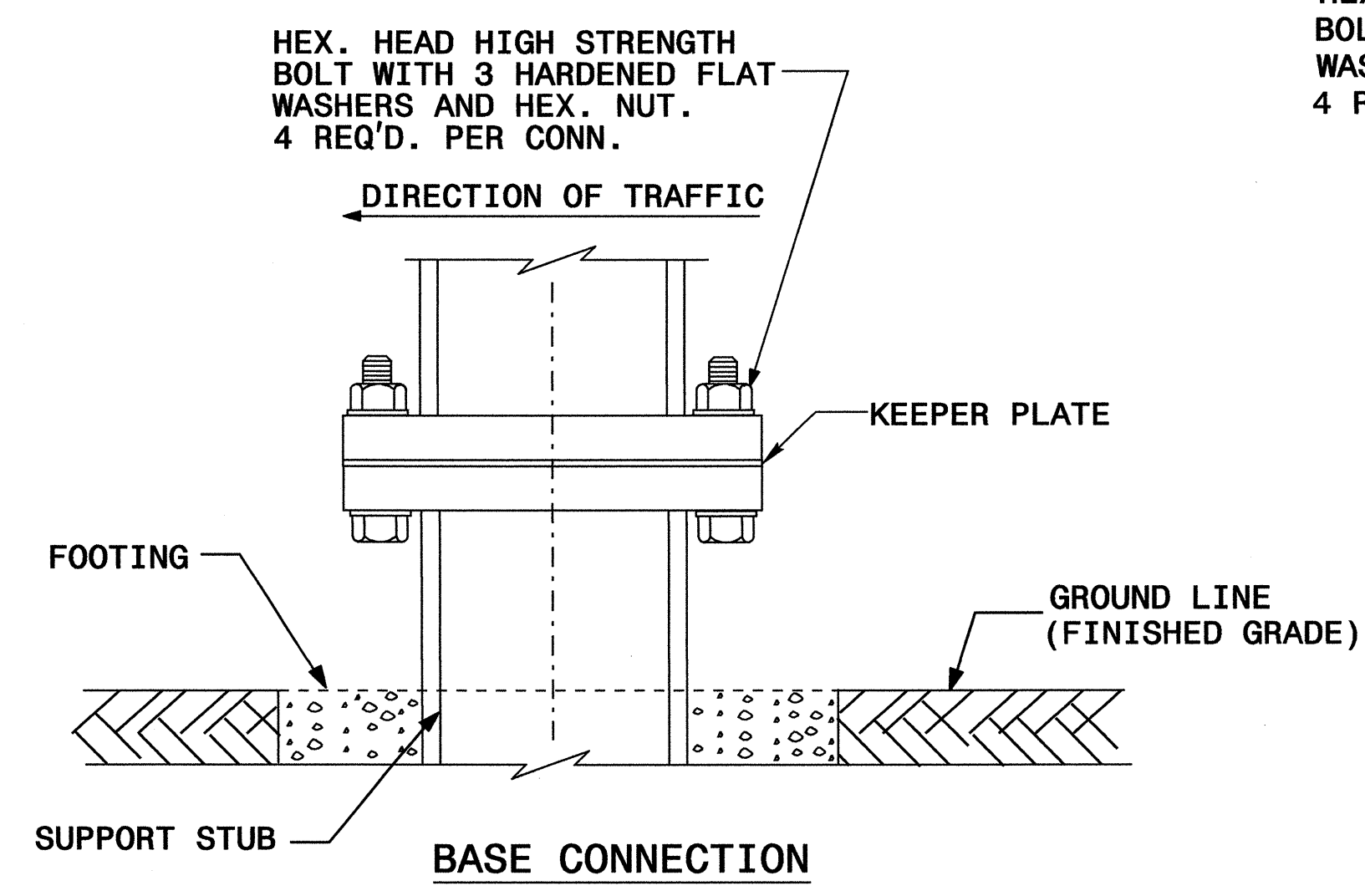
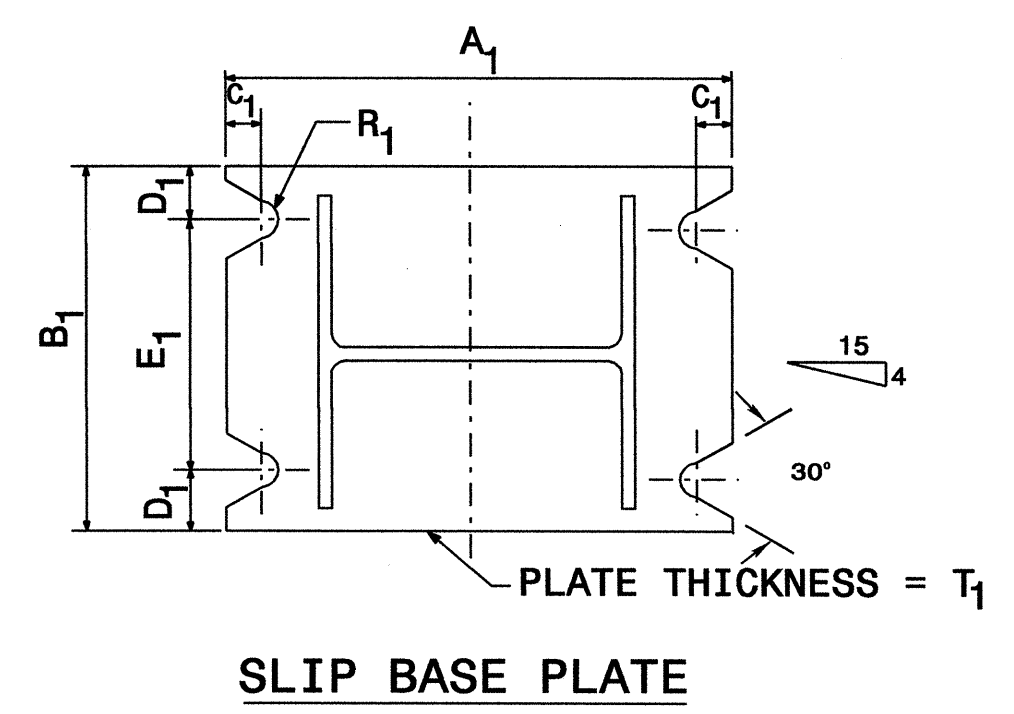
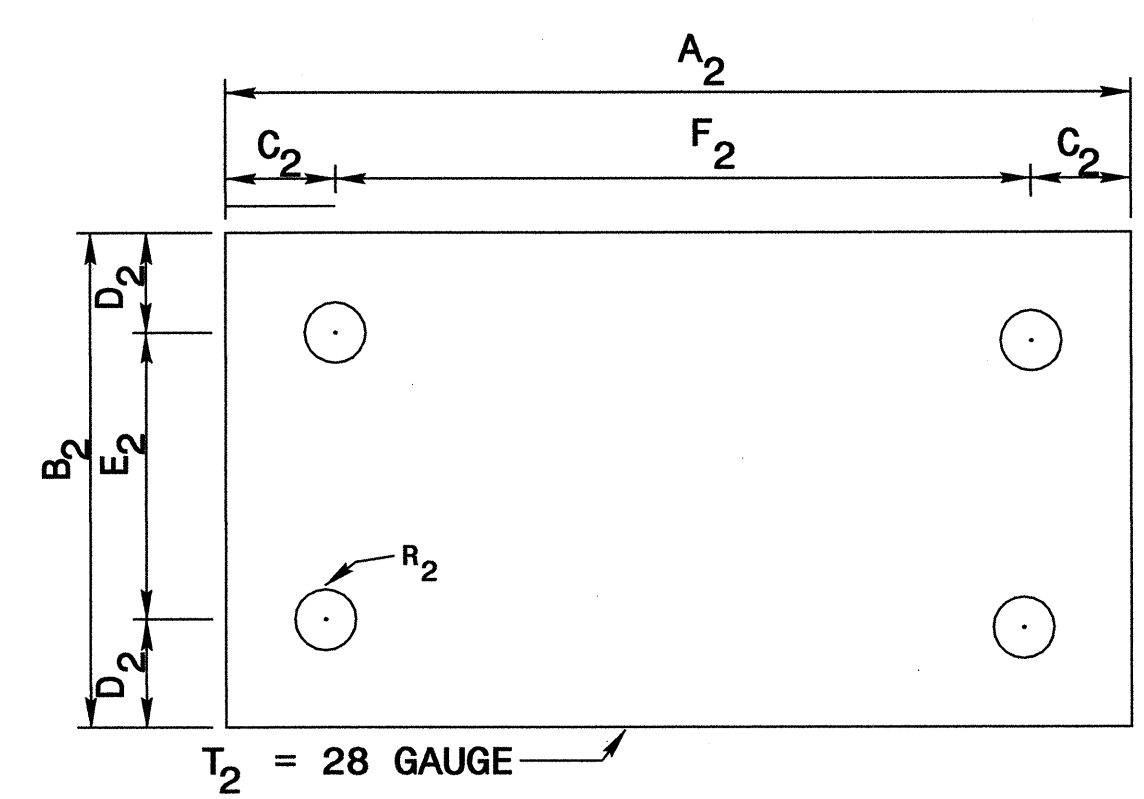
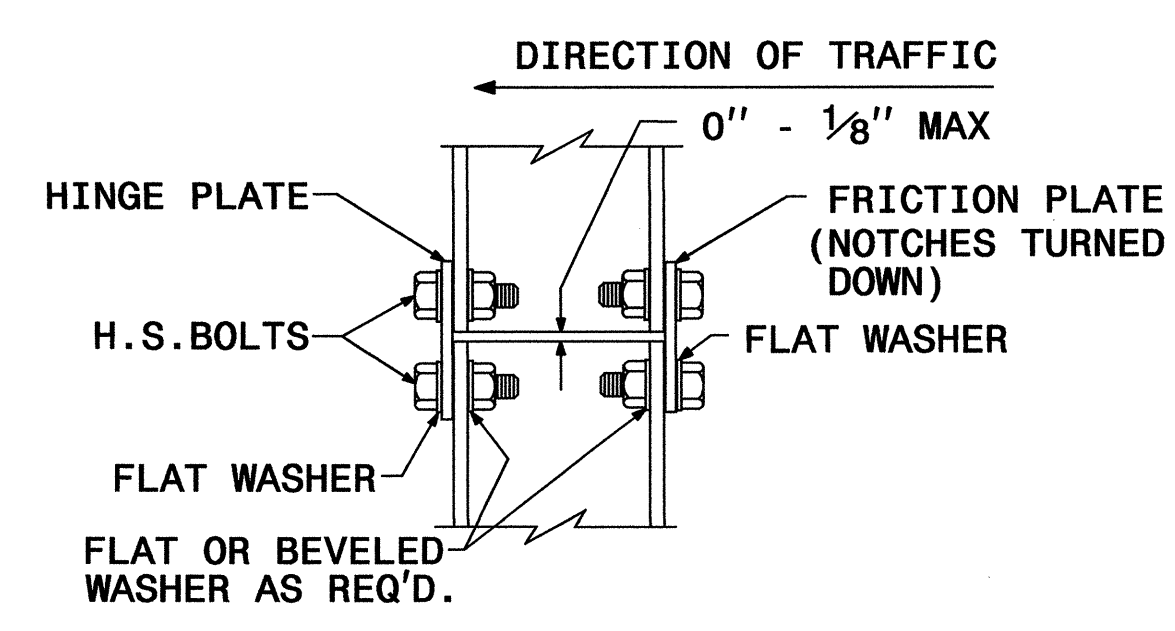
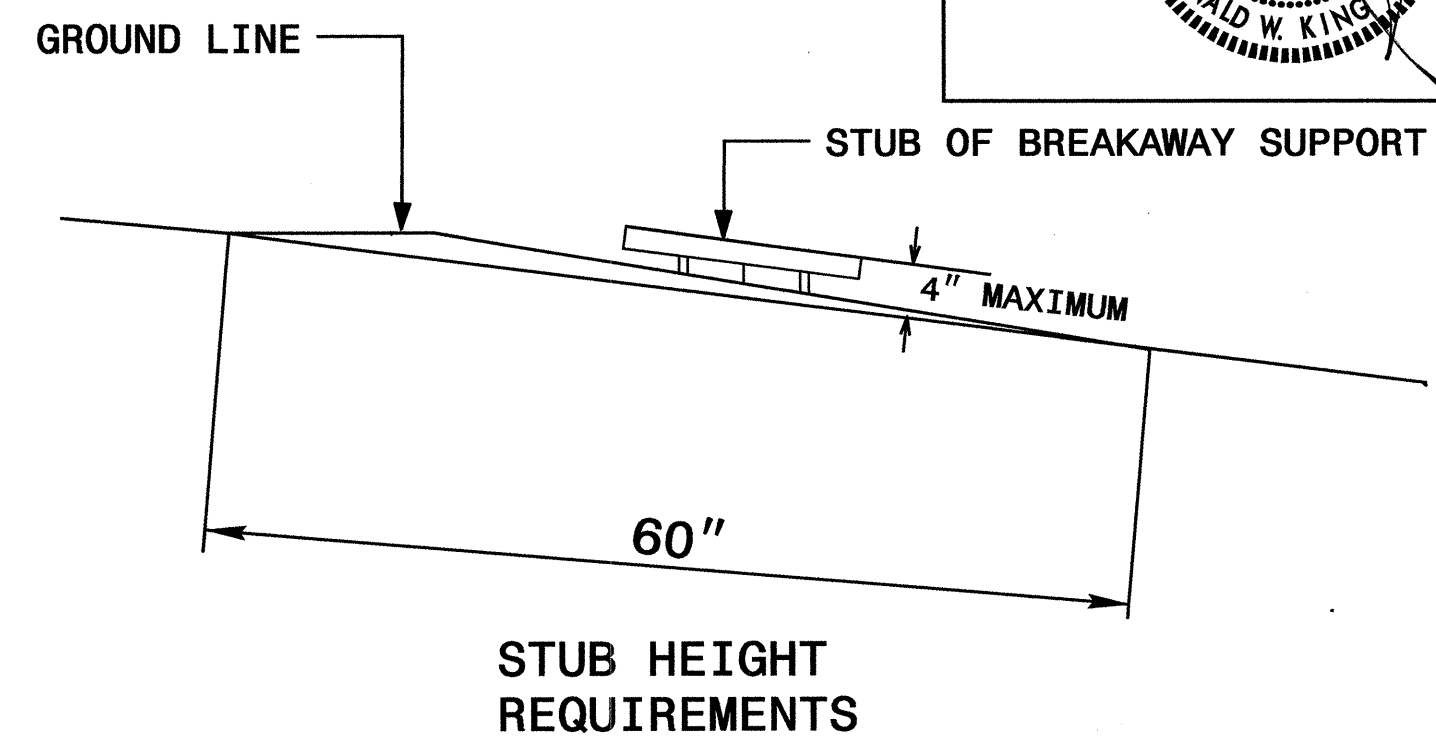
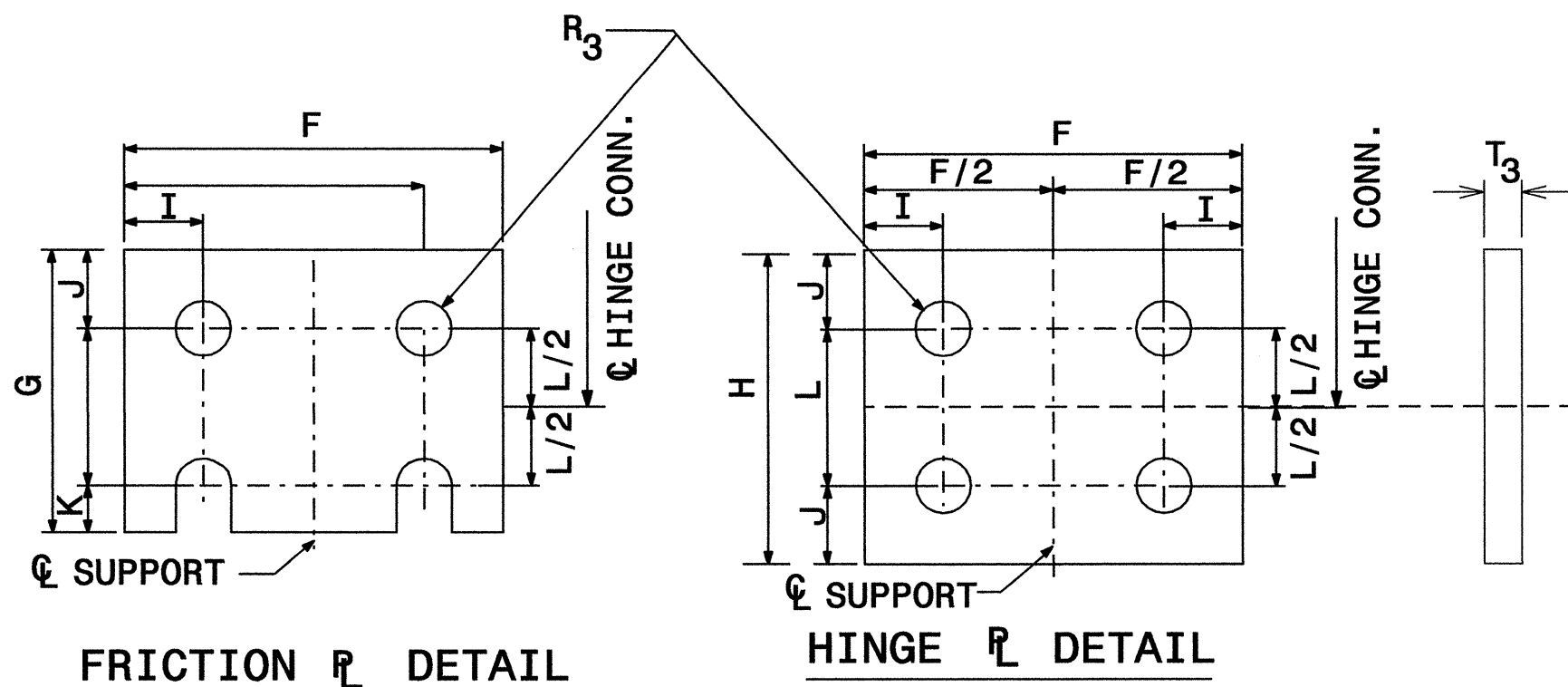
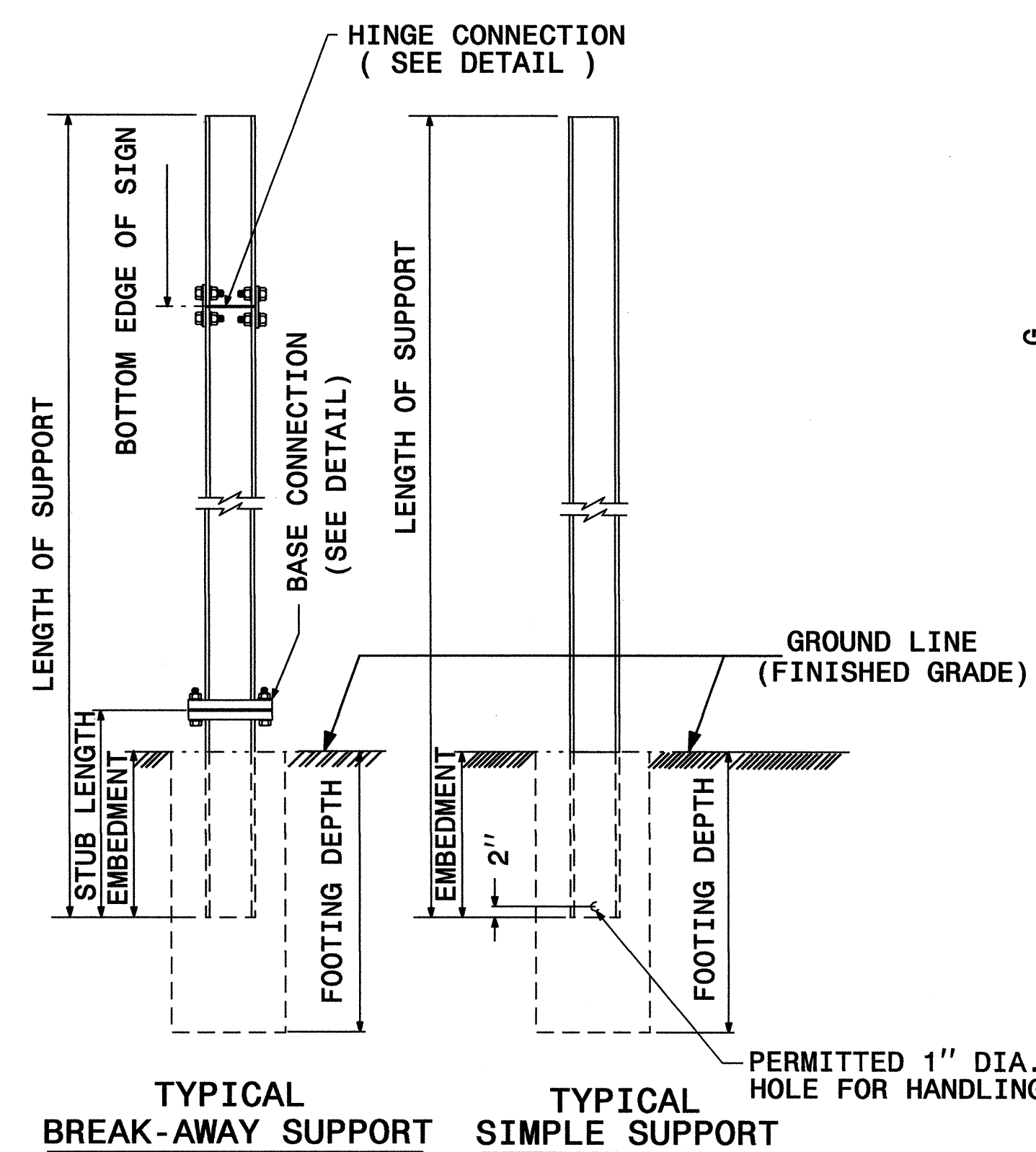
BACKING PLATE DETAIL



1. THE SUPPORT MOUNTING DETAIL SHOWS A "W" OR "S" BEAM. THIS DETAIL IS ALSO USED FOR MOUNTING SIGNS TO WOOD OR SQUARE TUBE SUPPORTS.
2. USE GALVANIZED STEEL FOR BACKING PLATES AND MOUNTING BOLTS IN ACCORDANCE WITH ASTM A123.
3. SEE NCDOT STANDARD SPECIFICATIONS FOR ROADS AND STRUCTURES FOR TYPE OF MATERIAL TO BE USED FOR SIGN HANGER ASSEMBLIES AND SUPPORTS.
4. USE GALVANIZED STEEL FOR MOUNTING BOLTS AND THREADED RODS IN COMPLIANCE WITH ASTM A307 AND ASTM A153.

SIGN MOUNTING DETAILS

I:\OCT-2009\048\14\2826A\Traffic\signing\road\signing\layout\plans\signing\2826attitle.dgn
s:\johns\11\110221642

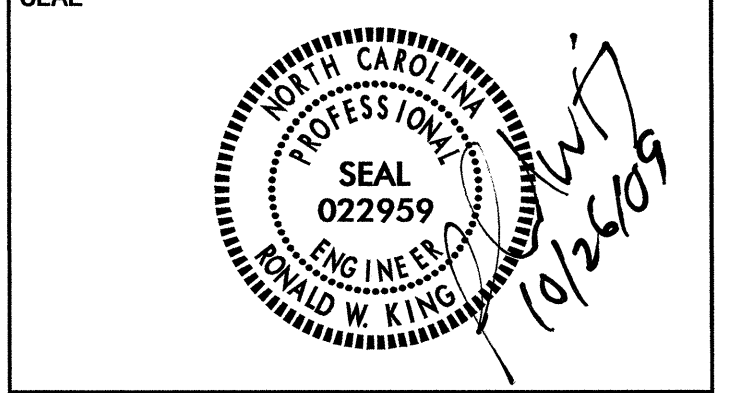


GROUND MOUNTED SIGN SUPPORT

SEE SHEET SIGN-6 FOR DIMENSIONS.
SEE SHEET SIGN-7 FOR NOTES.

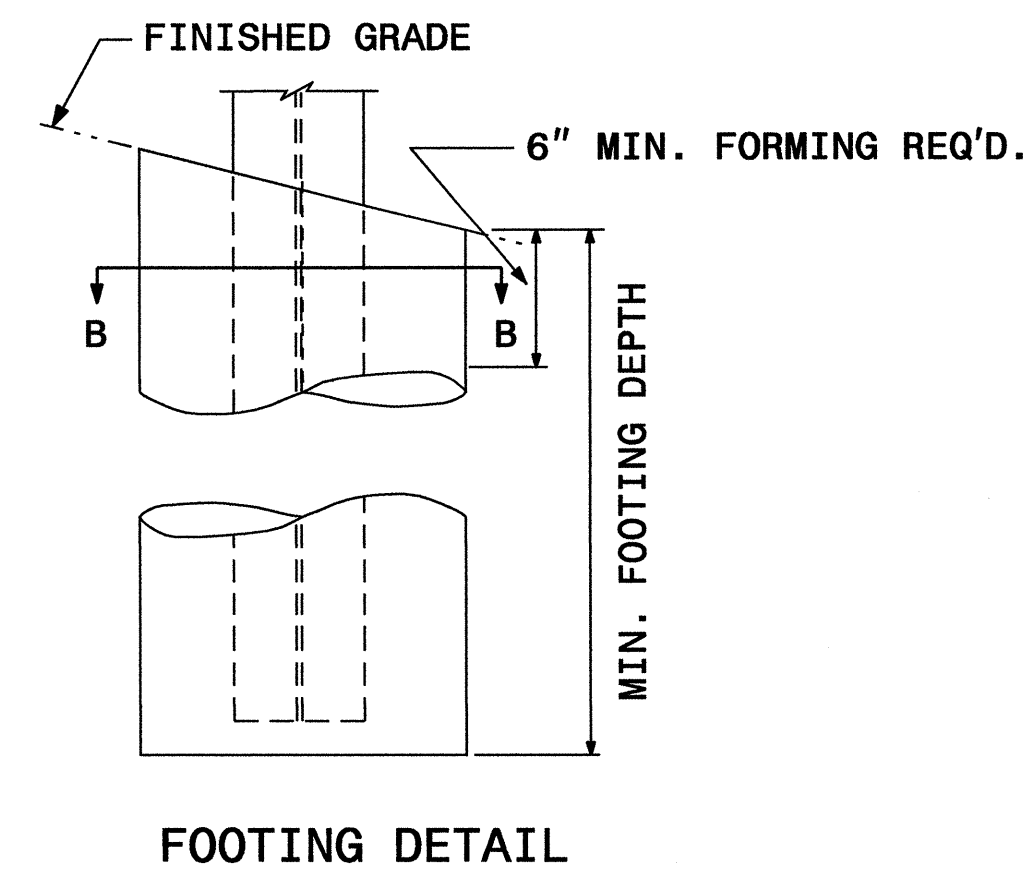
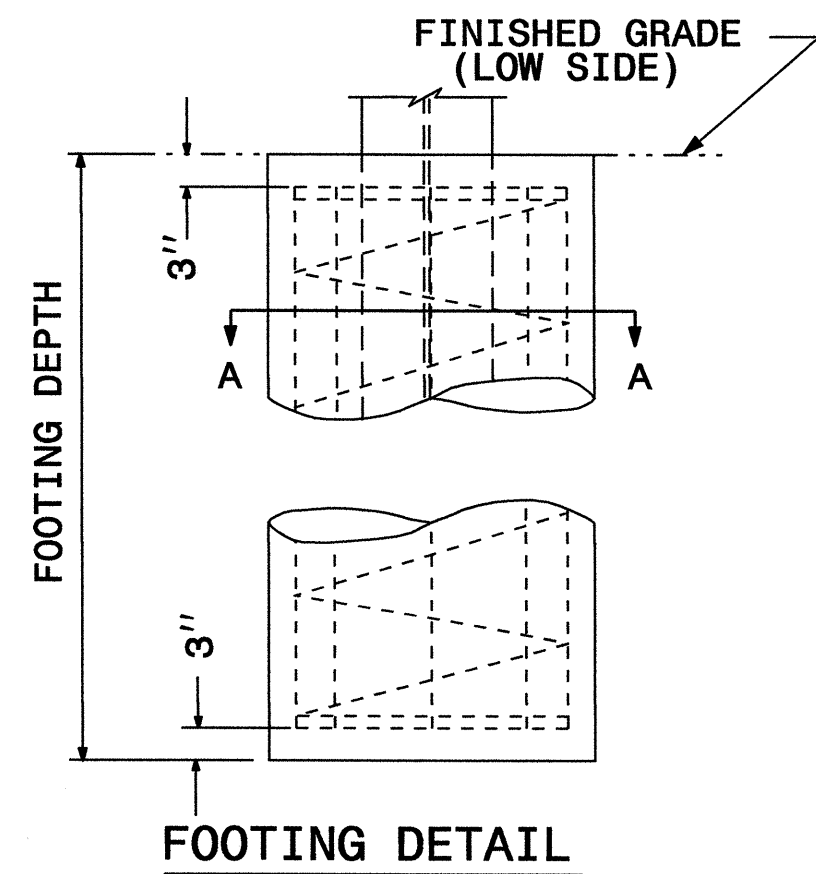
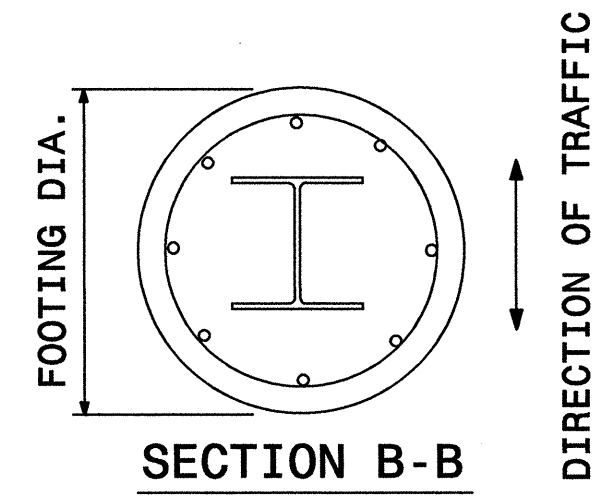
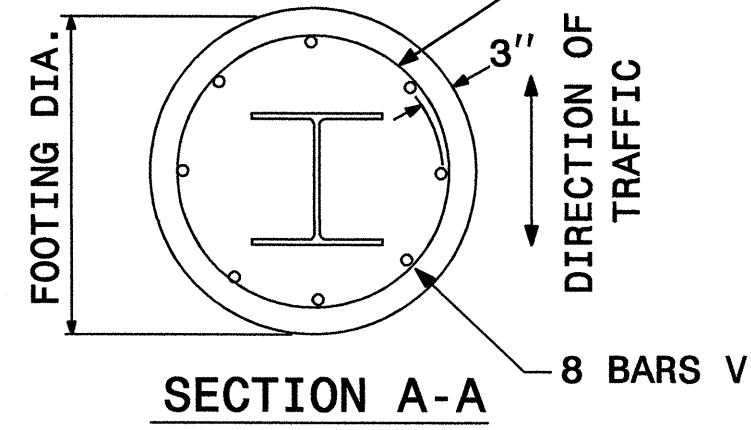
I:\4-OCT-2009 10:48 AM\2826A\traffic\signing\layout\plans\signing\2826a\title.dgn

APPROVED: _____
 DATE: _____



BEAM SHAPE	SLIP BASE PLATE DATA								KEEPER PLATE DATA							HINGE CONNECTION DATA							BREAK AWAY SUPPORT WEIGHT CONSTANT LBS.			
	BOLT SIZE	A ₁	B ₁	C ₁	D ₁	E ₁	T ₁	R ₁	A ₂	B ₂	C ₂	D ₂	E ₂	R ₂	T ₂	BOLT SIZE	F	G	H	I	J	K		L	R ₃	T ₃
S3X5.7	1/2"DIA.X 3"	7"	4"	1"	3/4"	2 1/2"	1"	9/32"	7"	4"	1"	3/4"	2 1/2"	9/32"	28 GAUGE	1/2"DIA.X1 1/4"	2 1/4"	3 1/2"	4"	1 1/2"	1"	1 1/2"	2"	9/32"	3/8"	18
S4X7.7	1/2"DIA.X 3"	8"	4"	1"	3/4"	2 1/2"	1"	9/32"	8"	4"	1"	3/4"	2 1/2"	9/32"	28 GAUGE	1/2"DIA.X1 1/4"	2 5/8"	3 1/2"	4"	1 1/2"	1"	1 1/2"	2"	9/32"	3/8"	20
W6X9	1/2"DIA.X 3"	10"	5"	1"	3/4"	3 1/2"	1"	9/32"	10"	5"	1"	3/4"	3 1/2"	9/32"	28 GAUGE	1/2"DIA.X1 1/4"	4"	3 1/2"	4"	3/4"	1"	1 1/2"	2"	9/32"	3/8"	32
W6X12	5/8"DIA.X3 3/4"	11"	5"	1 1/4"	7/8"	3 1/4"	1 1/4"	1 1/32"	11"	5"	1 1/4"	7/8"	3 1/4"	1 1/32"	28 GAUGE	5/8"DIA.X2 1/4"	4"	4"	4 1/2"	3/4"	1 1/8"	5/8"	2 1/4"	1 1/32"	3/8"	39
W6X16	5/8"DIA.X3 3/4"	12"	6"	1 1/4"	7/8"	4 1/4"	1 1/2"	1 1/32"	12"	6"	1 1/4"	7/8"	4 1/4"	1 1/32"	28 GAUGE	5/8"DIA.X2 1/2"	4"	4"	4 1/2"	3/4"	1 1/8"	5/8"	2 1/4"	1 1/32"	1/2"	47
W8X18	5/8"DIA.X 4 1/4"	13 1/2"	6 1/2"	1 1/4"	7/8"	4 3/4"	1 1/2"	1 1/32"	13 1/2"	6 1/2"	1 1/4"	7/8"	4 3/4"	1 1/32"	28 GAUGE	5/8"DIA.X2 1/2"	5 1/4"	4"	4 1/2"	1"	1 1/8"	5/8"	2 1/4"	1 1/32"	1/2"	70
W8X21	3/4"DIA.X 4 1/4"	14"	7"	1 1/2"	1"	5"	1 1/2"	1 3/32"	14"	7"	1 1/2"	1"	5"	1 3/32"	28 GAUGE	3/4"DIA.X2 3/4"	5 1/4"	6"	7"	1"	1 3/4"	3/4"	3 1/2"	1 3/32"	1/2"	73
W10X22	3/4"DIA.X 4 1/4"	16"	8"	1 1/2"	1"	6"	1 1/2"	1 3/32"	16"	8"	1 1/2"	1"	6"	1 3/32"	28 GAUGE	3/4"DIA.X2 3/4"	5 3/4"	6"	7"	1"	1 3/4"	3/4"	3 1/2"	1 3/32"	1/2"	119
W10X26	3/4"DIA.X4 3/4"	16 1/2"	8"	1 1/2"	1"	6"	1 3/4"	1 3/32"	16 1/2"	8"	1 1/2"	1"	6"	1 3/32"	28 GAUGE	3/4"DIA.X2 3/4"	5 3/4"	6"	7"	1"	1 3/4"	3/4"	3 1/2"	1 3/32"	5/8"	140
W12X26	3/4"DIA.X4 3/4"	18 1/2"	9"	1 1/2"	1"	7"	1 3/4"	1 3/32"	18 1/2"	9"	1 1/2"	1"	7"	1 3/32"	28 GAUGE	3/4"DIA.X2 3/4"	6 1/2"	6"	7"	1"	1 3/4"	3/4"	3 1/2"	1 3/32"	5/8"	176
W14X30	1"DIA.X 5"	22"	9"	2"	1 1/2"	6"	2"	1 7/32"	22"	9"	2"	1 1/2"	6"	1 7/32"	28 GAUGE	1"DIA.X3"	6 3/4"	7"	8"	1 1/4"	2"	1"	4"	1 7/32"	5/8"	205
W16X31	1"DIA.X 5"	24"	9"	2"	1 1/2"	6"	2"	1 7/32"	24"	9"	2"	1 1/2"	6"	1 7/32"	28 GAUGE	1"DIA.X3 1/4"	5 1/2"	7"	8"	1 1/4"	2"	1"	4"	1 7/32"	3/4"	223
W18X35	1"DIA.X 5"	25"	9"	2"	1 1/2"	6"	2"	1 7/32"	25"	9"	2"	1 1/2"	6"	1 7/32"	28 GAUGE	1"DIA.X3 1/4"	6"	7"	8"	1 1/4"	2"	1"	4"	1 7/32"	3/4"	243
W18X40	1"DIA.X5 1/2"	26"	9"	2"	1 1/2"	6"	2 1/4"	1 7/32"	26"	9"	2"	1 1/2"	6"	1 7/32"	28 GAUGE	1"DIA.X3 3/4"	6"	7"	8"	1 1/4"	2"	1"	4"	1 7/32"	7/8"	278
W21X44	1"DIA.X5 1/2"	29"	9"	2"	1 1/2"	6"	2 1/2"	1 7/32"	29"	9"	2"	1 1/2"	6"	1 7/32"	28 GAUGE	1"DIA.X3 3/4"	6 1/2"	7"	8"	1 1/4"	2"	1"	4"	1 7/32"	7/8"	310

2" FLAT TURNS TOP AND BOTTOM (SEE NOTE 10)



FOOTING DIAMETER	REINFORCEMENT	SPIRAL BAR
1' 6"	8 # 6 BARS	#3 BAR, 3" PITCH
2'	8 # 7 BARS	#3 BAR, 3" PITCH
2' 6"	8 # 9 BARS	#3 BAR, 3" PITCH
3'	8 # 11 BARS	#3 BAR, 3" PITCH
3' 6"	8 # 12 BARS	#3 BAR, 3" PITCH
4'	8 # 14 BARS	#3 BAR, 3" PITCH

* FOUNDATION DIMENSIONS ARE SHOWN IN PLANS SEE SHEET SIGN-6 FOR NOTES.

GROUND MOUNTED SIGN SUPPORT

TIP NO. U-2826A	SHEET NO. SIGN-6
APPROVED: _____	
DATE: _____	
SEAL	

NOTES:

- DESIGN CONFORMS WITH THE SPECIFICATIONS FOR THE DESIGN AND CONSTRUCTION OF STRUCTURAL SUPPORTS FOR HIGHWAY SIGNS - A.A.S.H.T.O.
- USE MATERIALS, FABRICATE AND ERECT SIGNS AND SUPPORTS THAT CONFORM TO THE NORTH CAROLINA DEPARTMENT OF TRANSPORTATION STANDARD SPECIFICATIONS FOR ROADS AND STRUCTURES.
- USE HIGH STRENGTH BOLTS, NUTS AND WASHERS THAT CONFORM TO A.S.T.M. A-325 AND THAT ARE GALVANIZED IN ACCORDANCE WITH A.S.T.M. A-153.
- USE BACKING PLATES, SLIP BASE PLATES, FRICTION PLATES, AND HINGE PLATES THAT CONFORM TO A.S.T.M. A-36 AND THAT ARE GALVANIZED IN ACCORDANCE WITH A.S.T.M. A-123 PRIOR TO GALVANIZING, GRIND SMOOTH ANY METAL PROJECTION BEYOND THE PLATE FACE. KEEPER PLATES SHALL BE MANUFACTURED FROM 28 GAUGE SHEET STEEL THAT CONFORMS TO A.S.T.M. A-36 AND IS GALVANIZED IN ACCORDANCE WITH A.S.T.M. A-123
- ASSEMBLE HINGE CONNECTIONS IN THE SHOP. SHOP TIGHTEN BOLTS BY USE OF EITHER A CALIBRATED POWER WRENCH OR A MANUAL TORQUE WRENCH. TIGHTEN EACH HINGE CONNECTION BOLT TO 1/3 PAST SNUG.
- BASE PLATES DETAILS ARE FOR INSTALLATIONS ON THE RIGHT SHOULDER AND IN GORE AREAS.
- ASSEMBLE UPPER SUPPORT TO STUB AS SHOWN IN DETAIL. SLIP BASE PLATES SHALL BE FILLET WELDED ONTO POSTS ALL AROUND THE STRUCTURAL SHAPE SO AS TO INSURE NO LOSS OF STRENGTH. ASSEMBLE IN EITHER SHOP OR FIELD. 28 GAUGE KEEPER PLATE IS PLACED BETWEEN SLIP BASE PLATES TO PREVENT BOLT SLIPPING. TIGHTEN BOLTS TO THE FOLLOWING PRESCRIBED TORQUE:

BOLT DIAMETER	TORQUE (LB. FT.)
1/2"	9
5/8"	22
3/8"	37
1"	48

COMPLETELY ASSEMBLE B/A POSTS PRIOR TO ERECTION. B/A POST TO BE SET IN ONE PIECE. AFTER SUPPORT HAS BEEN ERECTED AND THE CONCRETE FOOTINGS HAS CURED AT LEAST 48 HRS., CLEAN CONCRETE FROM BASE CONNECTION BOLTS THEN LOOSEN AND RETIGHTEN EACH BOLT IN A SYSTEMATIC ORDER TO THE PRESCRIBED TORQUE. DO NOT OVERTIGHTEN. BURR ALL BOLT THREADS OF BASE CONNECTIONS TO PREVENT LOOSENING.

- USE REINFORCED FOOTINGS WITH DIMENSIONS AS SHOWN IN PLANS. WHERE SOLID ROCK IS ENCOUNTERED, THE ENGINEER DIRECTS WHETHER TO PLACE THE FOOTING AT THE PRESCRIBED DEPTH OR EXTEND IT AT LEAST TWO FEET INTO THE ROCK. CONSTRUCT ALL FOOTINGS OF CLASS A CONCRETE.
- FORM TOP 6" OF FOOTINGS. ENGINEER APPROVES THE METHOD USED.
- THE FINAL FLAT TURN OF SPIRAL OR HOOPS NO. 3 OR LARGER PLACED 3" FROM TOP AND BOTTOM OF FOOTING MAY BE WELDED TO VERTICAL REINFORCING BARS. NO OTHER WELDING WILL BE PERMITTED.
- ELIMINATE HINGE CONNECTION FOR ALL SINGLE SUPPORT SIGNS.
- DETAIL IS FOR ONE DIRECTION BREAKAWAY. WHEN PLANS REQUIRE A TWO DIRECTION BREAKAWAY, TWO FRICTION PLATES SHALL BE USED IN LIEU OF ONE FRICTION PLATE AND ONE HINGE PLATE.
- SHAPE THE TOPS OF THE FOOTINGS TO CONFORM WITH FINISHED GROUND ELEVATIONS SUCH THAT WATER WILL NOT COLLECT AGAINST THE SUPPORTS.
- IF THE GROUNDWATER IS ENCOUNTERED AT AN DEPTH SHALLOWER THAN 7 FEET, THE SIGN FOUNDATION MUST BE REDESIGNED BASED UPON THE ACTUAL FIELD CONDITIONS. THE FOUNDATION DESIGN DOES NOT APPLY TO VERY SOFT OR LOOSE SOIL, MUCK, WEATHERED ROCK, OR HARD ROCK.

GROUND MOUNTED SIGN SUPPORT

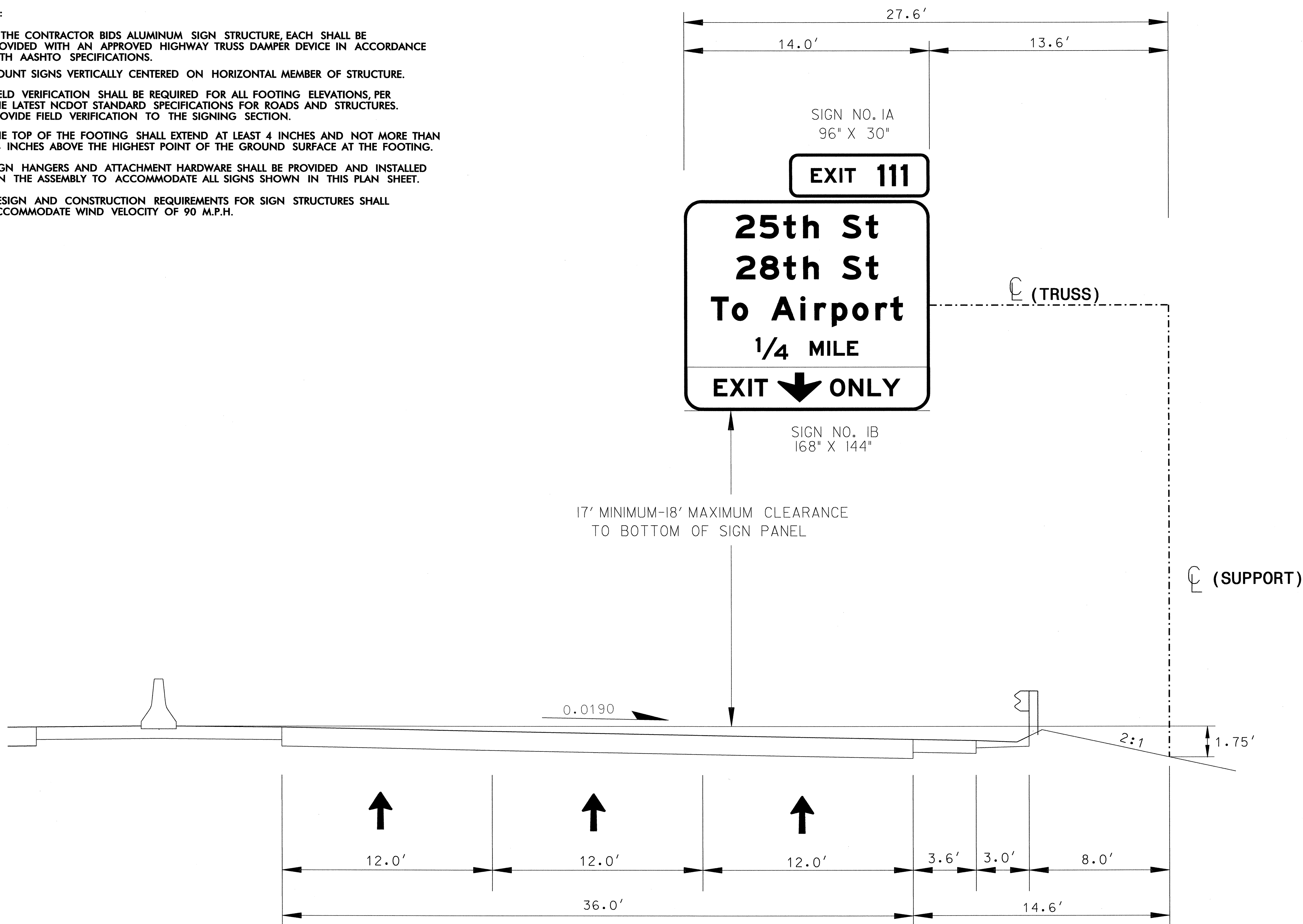
STATE	PROJECT NO.	SHEET NO.	TOTAL SHTS.
N.C.	U-2826A	SIGN-7	

APPROVED: _____
 DATE: _____
 SEAL



NOTES:

- IF THE CONTRACTOR BIDS ALUMINUM SIGN STRUCTURE, EACH SHALL BE PROVIDED WITH AN APPROVED HIGHWAY TRUSS DAMPER DEVICE IN ACCORDANCE WITH AASHTO SPECIFICATIONS.
- MOUNT SIGNS VERTICALLY CENTERED ON HORIZONTAL MEMBER OF STRUCTURE.
- FIELD VERIFICATION SHALL BE REQUIRED FOR ALL FOOTING ELEVATIONS, PER THE LATEST NCDOT STANDARD SPECIFICATIONS FOR ROADS AND STRUCTURES. PROVIDE FIELD VERIFICATION TO THE SIGNING SECTION.
- THE TOP OF THE FOOTING SHALL EXTEND AT LEAST 4 INCHES AND NOT MORE THAN 24 INCHES ABOVE THE HIGHEST POINT OF THE GROUND SURFACE AT THE FOOTING.
- SIGN HANGERS AND ATTACHMENT HARDWARE SHALL BE PROVIDED AND INSTALLED ON THE ASSEMBLY TO ACCOMMODATE ALL SIGNS SHOWN IN THIS PLAN SHEET.
- DESIGN AND CONSTRUCTION REQUIREMENTS FOR SIGN STRUCTURES SHALL ACCOMMODATE WIND VELOCITY OF 90 M.P.H.



OVERHEAD SIGN STRUCTURE
 AT STA. 9+80(NBL) -L-

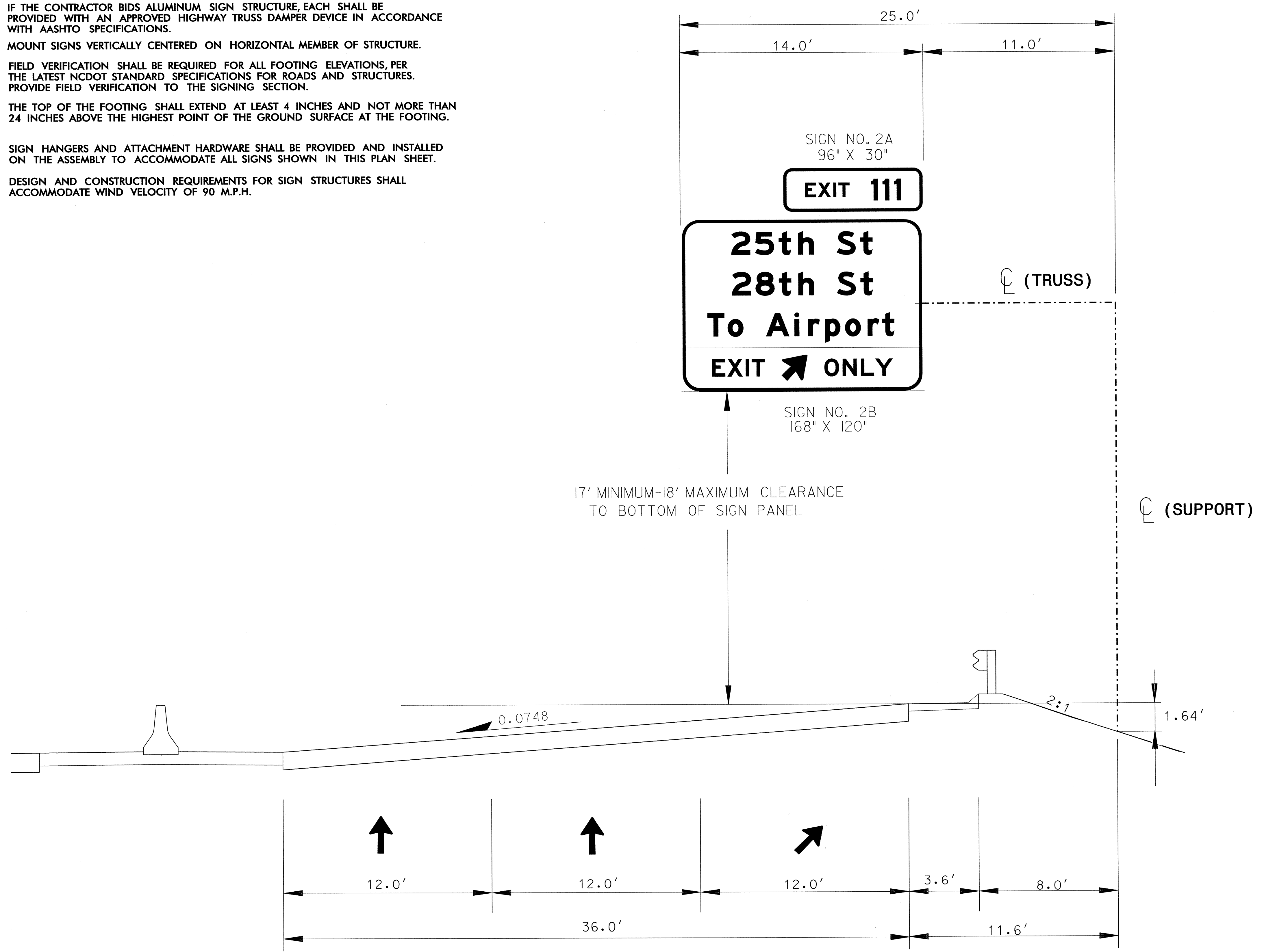
STATE	PROJECT NO.	SHEET NO.	TOTAL SHTS.
N. C.	U-2826A	SIGN-8	

APPROVED: _____
DATE: _____

SEAL

NOTES:

- IF THE CONTRACTOR BIDS ALUMINUM SIGN STRUCTURE, EACH SHALL BE PROVIDED WITH AN APPROVED HIGHWAY TRUSS DAMPER DEVICE IN ACCORDANCE WITH AASHTO SPECIFICATIONS.
- MOUNT SIGNS VERTICALLY CENTERED ON HORIZONTAL MEMBER OF STRUCTURE.
- FIELD VERIFICATION SHALL BE REQUIRED FOR ALL FOOTING ELEVATIONS, PER THE LATEST NCDOT STANDARD SPECIFICATIONS FOR ROADS AND STRUCTURES. PROVIDE FIELD VERIFICATION TO THE SIGNING SECTION.
- THE TOP OF THE FOOTING SHALL EXTEND AT LEAST 4 INCHES AND NOT MORE THAN 24 INCHES ABOVE THE HIGHEST POINT OF THE GROUND SURFACE AT THE FOOTING.
- SIGN HANGERS AND ATTACHMENT HARDWARE SHALL BE PROVIDED AND INSTALLED ON THE ASSEMBLY TO ACCOMMODATE ALL SIGNS SHOWN IN THIS PLAN SHEET.
- DESIGN AND CONSTRUCTION REQUIREMENTS FOR SIGN STRUCTURES SHALL ACCOMMODATE WIND VELOCITY OF 90 M.P.H.



OVERHEAD SIGN STRUCTURE
AT STA. 20+00(NBL) -L-

SIGN NUMBER: 1A, 2A TYPE: B QUANTITY: 2	BACKG COLOR: Green COPY COLOR: White	DESIGN BY: SWJ PROJECT ID: U-2826A	CHECKED BY: DIV: 9	DATE: Apr 15, 2009
---	---	---------------------------------------	-----------------------	--------------------

SIGN WIDTH: 8'-0"
HEIGHT: 2'-6"
TOTAL AREA: 20.0 Sq.Ft.

BORDER TYPE: FLUSH
RECESS: 0"
WIDTH: 2"
RADIUS: 6"

NO. Z BARS: 0
LENGTH: 160.0

MAT'L: 0.125" (3.2 mm) ALUMINUM

USE NOTES: 1,2

- Legend and border shall be direct applied Grade A sheeting.
- Background shall be Grade C reflective sheeting.
- Shields shall be on 0.032" (0.8mm) aluminum and discountable.
- Shields shall be Grade A sheeting.
- Bottom panel shall be yellow Grade C sheeting. Legend shall be direct applied black non-reflective sheeting. Yellow panel is:

Letter positions table:

Letter spacings are to start of next letter											Series/Size Text Length
	E	X	I	T	1	1	1	1	1	1	E 2000
15	8.9	10.7	3.5	7.5	15	8	7.9	4.5	15		66

Spacing Factor is 1 unless specified otherwise

FILENAME: Ssigns NORTH CAROLINA D.O.T. SIGN DETAIL

SIGN NUMBER: 2B TYPE: A QUANTITY: 1	BACKG COLOR: Green COPY COLOR: White	DESIGN BY: SWJ PROJECT ID: U-2826A	CHECKED BY: DIV: 9	DATE: Sep 16, 2009
---	---	---------------------------------------	-----------------------	--------------------

SIGN WIDTH: 14'-0"
HEIGHT: 10'-0"
TOTAL AREA: 140.0 Sq.Ft.

BORDER TYPE: FLUSH
RECESS: 0"
WIDTH: 2"
RADIUS: 12"

NO. Z BARS: 3
LENGTH: 160.0

MAT'L: 0.125" (3.2 mm) ALUMINUM

USE NOTES: 1,2,3

- Legend and border shall be direct applied Grade A sheeting.
- Background shall be Grade C reflective sheeting.
- Bottom panel shall be yellow Grade C sheeting. Legend shall be direct applied black non-reflective sheeting. Yellow panel is: 164" x 28"

Letter positions table:

Letter spacings are to start of next letter											Series/Size Text Length
	2	5	t	h	S	t					EM 2000
35.3	16.5	16.3	13.4	10.6	16	16.3	8.3	35.3			97.4
2	8	t	h	S	t						EM 2000
35.6	16.3	16.2	13.4	10.6	16	16.3	8.3	35.3			97.1
	T	o	A	i	r	p	o	r	t		EM 2000
18.5	14.2	10.9	16	20	9.6	11.8	14.1	15.8	10.2	8.3	131
	E	X	I	T							E 2000
20.7	10.7	12.8	4.2	9	110.6						36.7
	O	N	L	Y							E 2000
99.4	12.8	12.8	10	12.2	20.7						47.9

Spacing Factor is 1 unless specified otherwise

FILENAME: Ssigns NORTH CAROLINA D.O.T. SIGN DETAIL

SIGN NUMBER: 1B TYPE: A QUANTITY: 1	BACKG COLOR: Green COPY COLOR: White	DESIGN BY: SWJ PROJECT ID: U-2826A	CHECKED BY: DIV: 9	DATE: Sep 16, 2009
---	---	---------------------------------------	-----------------------	--------------------

SIGN WIDTH: 14'-0"
HEIGHT: 12'-0"
TOTAL AREA: 168.0 Sq.Ft.

BORDER TYPE: FLUSH
RECESS: 0"
WIDTH: 2"
RADIUS: 12"

NO. Z BARS: 0
LENGTH: 160.0

MAT'L: 0.125" (3.2 mm) ALUMINUM

USE NOTES: 1,2,3

- Legend and border shall be direct applied Grade A sheeting.
- Background shall be Grade C reflective sheeting.
- Bottom panel shall be yellow Grade C sheeting. Legend shall be direct applied black non-reflective sheeting. Yellow panel is: 164" x 28"

Letter positions table:

Letter spacings are to start of next letter											Series/Size Text Length
	2	5	t	h	S	t					EM 2000
35.3	16.5	16.3	13.4	10.6	16	16.3	8.3	35.3			97.4
2	8	t	h	S	t						EM 2000
35.6	16.3	16.2	13.4	10.6	16	16.3	8.3	35.3			97.1
	T	o	A	i	r	p	o	r	t		EM 2000
18.5	14.2	10.9	16	20	9.6	11.8	14.1	15.8	10.2	8.3	131
	1/4	M	I	L	E						E 2000
49	22	15	12	4.4	9.2	7.5	49				70.1
	E	X	I	T							E 2000
20.3	10.7	12.8	4.2	9	111						36.7
	O	N	L	Y							E 2000
99.8	12.8	12.8	10	12.2	20.3						47.9

Spacing Factor is 1 unless specified otherwise

FILENAME: Ssigns NORTH CAROLINA D.O.T. SIGN DETAIL

**TYPE "A" & "B" SIGNS
(OVERHEAD)**

22-061-2009 09:10 U:\2826A\Traffic\Signing\CADD\Sign Designs\Ssigns.dgn
 22-061-2009 09:10 U:\2826A\Traffic\Signing\CADD\Sign Designs\Ssigns.dgn
 22-061-2009 09:10 U:\2826A\Traffic\Signing\CADD\Sign Designs\Ssigns.dgn



SIGN NUMBER: 102A, 105A BACKG COLOR: Green
 TYPE: B COPY COLOR: White
 QUANTITY: 2

SYMBOL	X	Y	WID	HT

SIGN WIDTH: 8'-6"
 HEIGHT: 2'-6"
 TOTAL AREA: 21.3 Sq.Ft.

BORDER TYPE: FLUSH
 RECESS: 0"
 WIDTH: 2"
 RADII: 6"

NO. Z BARS: 2
 LENGTH: 118.0

MAT'L: 0.125" (3.2 mm) ALUMINUM

DESIGN BY: SWJ CHECKED BY: DATE: Feb 11, 2009
 PROJECT ID: U-2826A DIV: 9

USE NOTES: 1,2

- Legend and border shall be direct applied Grade B sheeting.
- Background shall be Grade C reflective sheeting.

Spacing Factor is 1 unless specified otherwise

LETTER POSITIONS

Letter spacings are to start of next letter

Series/Size	Text Length
E 2000	73.2

FILENAME: Signs NORTH CAROLINA D.O.T. SIGN DETAIL

SIGN NUMBER: 102B BACKG COLOR: Green
 TYPE: A COPY COLOR: White
 QUANTITY: 1

SYMBOL	X	Y	WID	HT

SIGN WIDTH: 10'-6"
 HEIGHT: 5'-0"
 TOTAL AREA: 52.5 Sq.Ft.

BORDER TYPE: FLUSH
 RECESS: 0"
 WIDTH: 2"
 RADII: 9"

NO. Z BARS: 2
 LENGTH: 118.0

MAT'L: 0.125" (3.2 mm) ALUMINUM

DESIGN BY: SWJ CHECKED BY: DATE: Feb 10, 2009
 PROJECT ID: U-2826A DIV: 9

USE NOTES: 1,2

- Legend and border shall be direct applied Grade B sheeting.
- Background shall be Grade C reflective sheeting.

Spacing Factor is 1 unless specified otherwise

LETTER POSITIONS

Letter spacings are to start of next letter

Series/Size	Text Length
E 2000	95
E 2000	56.1

FILENAME: Signs NORTH CAROLINA D.O.T. SIGN DETAIL

SIGN NUMBER: 101B BACKG COLOR: Green
 TYPE: A COPY COLOR: White
 QUANTITY: 1

SYMBOL	X	Y	WID	HT
ARMED	107.5	21.6	19.2	30.2

SIGN WIDTH: 12'-0"
 HEIGHT: 7'-6"
 TOTAL AREA: 90.0 Sq.Ft.

BORDER TYPE: FLUSH
 RECESS: 0"
 WIDTH: 2"
 RADII: 12"

NO. Z BARS: 3
 LENGTH: 136.0

MAT'L: 0.125" (3.2 mm) ALUMINUM

DESIGN BY: SWJ CHECKED BY: DATE: Sep 16, 2009
 PROJECT ID: U-2826A DIV: 9

USE NOTES: 1,2

- Legend and border shall be direct applied Grade B sheeting.
- Background shall be Grade C reflective sheeting.

Spacing Factor is 1 unless specified otherwise

LETTER POSITIONS

Letter spacings are to start of next letter

Series/Size	Text Length
E 2000	20.9
E 2000	81.2
E 2000	80.9

FILENAME: Signs NORTH CAROLINA D.O.T. SIGN DETAIL

SIGN NUMBER: 101A, 103A BACKG COLOR: Green
 TYPE: B COPY COLOR: White
 QUANTITY: 2

SYMBOL	X	Y	WID	HT

SIGN WIDTH: 8'-0"
 HEIGHT: 2'-6"
 TOTAL AREA: 20.0 Sq.Ft.

BORDER TYPE: FLUSH
 RECESS: 0"
 WIDTH: 2"
 RADII: 6"

NO. Z BARS: 3
 LENGTH: 136.0

MAT'L: 0.125" (3.2 mm) ALUMINUM

DESIGN BY: SWJ CHECKED BY: DATE: Apr 16, 2009
 PROJECT ID: U-2826A DIV: 9

USE NOTES: 1,2

- Legend and border shall be direct applied Grade B sheeting.
- Background shall be Grade C reflective sheeting.
- Shields shall be on 0.032" (0.8mm) aluminum and demountable.
- Shields shall be Grade B sheeting.

Spacing Factor is 1 unless specified otherwise

LETTER POSITIONS

Letter spacings are to start of next letter

Series/Size	Text Length
E 2000	66

FILENAME: Signs NORTH CAROLINA D.O.T. SIGN DETAIL

**TYPE "A" & "B" SIGNS
(GROUND MOUNTED)**

22-061-2009 09:10 U-2826A\Traffic\Signing\CADD\Sign_Designs\Signs.dgn
 sjoahns AT 11/02/2009 11:42



SIGN NUMBER: 103B TYPE: A QUANTITY: 1 SIGN WIDTH: 9'-0" HEIGHT: 8'-6" TOTAL AREA: 76.5 Sq.Ft. BORDER TYPE: FLUSH RECESS: 0" WIDTH: 2" RADII: 12" NO. Z BARS: 3 LENGTH: 100.0	BACKG COLOR: Green COPY COLOR: White SYMBOl X Y WID HT MAT'L: 0.125" (3.2 mm) ALUMINUM	DESIGN BY: SWJ PROJECT ID: U-2826A CHECKED BY: DIV: 9 DATE: Sep 16, 2009
---	---	--

108" x 102" Spacing Factor is 1 unless specified otherwise

LETTER POSITIONS

Letter spacings are to start of next letter

Series/Size	Text Length
EM 2000	20.9
EM 2000	20.9
EM 2000	81.2
EM 2000	80.9
E 2000	56.1

FILENAME: Signs NORTH CAROLINA D.O.T. SIGN DETAIL

SIGN NUMBER: 104 TYPE: A QUANTITY: 1 SIGN WIDTH: 12'-0" HEIGHT: 7'-0" TOTAL AREA: 84.0 Sq.Ft. BORDER TYPE: FLUSH RECESS: 0" WIDTH: 2" RADII: 12" NO. Z BARS: 0 LENGTH: 136.0	BACKG COLOR: Green COPY COLOR: White SYMBOl X Y WID HT MAT'L: 0.125" (3.2 mm) ALUMINUM	DESIGN BY: SWJ PROJECT ID: U-2826A CHECKED BY: DIV: 9 DATE: Feb 11, 2009
---	---	--

144" x 84" Spacing Factor is 1 unless specified otherwise

LETTER POSITIONS

Letter spacings are to start of next letter

Series/Size	Text Length
EM 2000	94.5
EM 2000	113.4
E 2000	58.6

FILENAME: Signs NORTH CAROLINA D.O.T. SIGN DETAIL

SIGN NUMBER: 105B TYPE: A QUANTITY: 1 SIGN WIDTH: 10'-6" HEIGHT: 5'-0" TOTAL AREA: 52.5 Sq.Ft. BORDER TYPE: FLUSH RECESS: 0" WIDTH: 2" RADII: 9" NO. Z BARS: 2 LENGTH: 118.0	BACKG COLOR: Green COPY COLOR: White SYMBOl X Y WID HT MAT'L: 0.125" (3.2 mm) ALUMINUM	DESIGN BY: SWJ PROJECT ID: U-2826A CHECKED BY: DIV: 9 DATE: Feb 10, 2009
---	---	--

126" x 60" Spacing Factor is 1 unless specified otherwise

LETTER POSITIONS

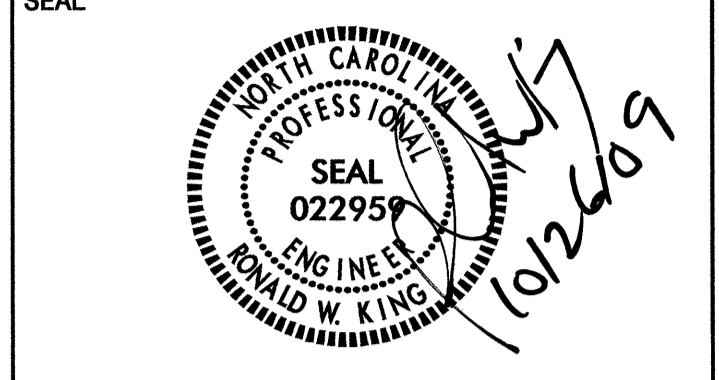
Letter spacings are to start of next letter

Series/Size	Text Length
EM 2000	95
E 2000	56.1

FILENAME: Signs NORTH CAROLINA D.O.T. SIGN DETAIL

**TYPE "A" & "B" SIGNS
(GROUND MOUNTED)**

APPROVED: _____
DATE: _____



SIGN NUMBER: 301
TYPE: D
QUANTITY: 1
SIGN WIDTH: 5'-0"
HEIGHT: 1'-6"
TOTAL AREA: 7.5 Sq.Ft.
BORDER TYPE: FLUSH
RECESS: 0"
WIDTH: 0.75"
RADIUS: 3"
NO. Z BARS: _____
LENGTH: _____

BACKG COLOR: Green
COPY COLOR: White

SYMBOL	X	Y	WID	HT
ARUP	44.6	6	6	9

DESIGN BY: SWJ
PROJECT ID: U-2826A
CHECKED BY: DIV: 9
DATE: Feb 16, 2009

USE NOTES: 1,2
1. Legend and border shall be direct applied Grade C sheeting.
2. Background shall be Grade C reflective sheeting.

60" x 18"

LETTER POSITIONS

Letter spacings are to start of next letter

Series/Size	Text Length
D 2000	32.2

6.4	6	2.4	5.1	4.9	5.6	4.6	3.7	21.4
-----	---	-----	-----	-----	-----	-----	-----	------

FILENAME: Signs
NORTH CAROLINA D.O.T. SIGN DETAIL

SIGN NUMBER: 303
TYPE: D
QUANTITY: 1
SIGN WIDTH: 5'-0"
HEIGHT: 1'-6"
TOTAL AREA: 7.5 Sq.Ft.
BORDER TYPE: FLUSH
RECESS: 0"
WIDTH: 0.75"
RADIUS: 3"
NO. Z BARS: _____
LENGTH: _____

BACKG COLOR: Green
COPY COLOR: White

SYMBOL	X	Y	WID	HT
ARUP	6.4	6	6	9

DESIGN BY: SWJ
PROJECT ID: U-2826A
CHECKED BY: DIV: 9
DATE: Apr 14, 2009

USE NOTES: 1,2
1. Legend and border shall be direct applied Grade C sheeting.
2. Background shall be Grade C reflective sheeting.

60" x 18"

LETTER POSITIONS

Letter spacings are to start of next letter

Series/Size	Text Length
D 2000	32.2

21.4	6	2.4	5.1	4.9	5.6	4.6	3.7	6.4
------	---	-----	-----	-----	-----	-----	-----	-----

FILENAME: Signs
NORTH CAROLINA D.O.T. SIGN DETAIL

SIGN NUMBER: 302
TYPE: D
QUANTITY: 1
SIGN WIDTH: 5'-0"
HEIGHT: 3'-6"
TOTAL AREA: 17.5 Sq.Ft.
BORDER TYPE: FLUSH
RECESS: 0"
WIDTH: 0.75"
RADIUS: 6"
NO. Z BARS: _____
LENGTH: _____

BACKG COLOR: Green/Green
COPY COLOR: White

SYMBOL	X	Y	WID	HT
ARUP	7.4	24.5	6	9
ARUP	46	4.8	6	9

DESIGN BY: SWJ
PROJECT ID: U-2826A
CHECKED BY: DIV: 9
DATE: Apr 16, 2009

USE NOTES: 1,2
1. Legend and border shall be direct applied Grade C sheeting.
2. Background shall be Grade C reflective sheeting.

60" x 42"

LETTER POSITIONS

Letter spacings are to start of next letter

Series/Size	Text Length
D 2000	33.1
D 2000	32.2
D 2000	33.1

19.4	5.3	4.9	4.6	4.1	6	4.6	3.7	7.4
20.3	6	2.4	5.1	4.9	5.6	4.6	3.7	7.4
6.9	5.3	4.9	4.6	4.1	6	4.6	3.7	20

FILENAME: Signs
NORTH CAROLINA D.O.T. SIGN DETAIL

SIGN NUMBER: 304
TYPE: D
QUANTITY: 1
SIGN WIDTH: 5'-0"
HEIGHT: 2'-6"
TOTAL AREA: 12.5 Sq.Ft.
BORDER TYPE: FLUSH
RECESS: 0"
WIDTH: 0.75"
RADIUS: 3"
NO. Z BARS: _____
LENGTH: _____

BACKG COLOR: Green/Green
COPY COLOR: White

SYMBOL	X	Y	WID	HT
ARUP	5.9	19.3	6	9
ARUP	45.1	4.7	6	9

DESIGN BY: SWJ
PROJECT ID: U-2826A
CHECKED BY: DIV: 9
DATE: Sep 16, 2009

USE NOTES: 1,2
1. Legend and border shall be direct applied Grade C sheeting.
2. Background shall be Grade C reflective sheeting.

60" x 30"

LETTER POSITIONS

Letter spacings are to start of next letter

Series/Size	Text Length
D 2000	33.1
D 2000	33.1

20.9	5.3	4.9	4.6	4.1	6	4.6	3.7	5.9
5.9	5.3	4.9	4.6	4.1	6	4.6	3.7	20.9

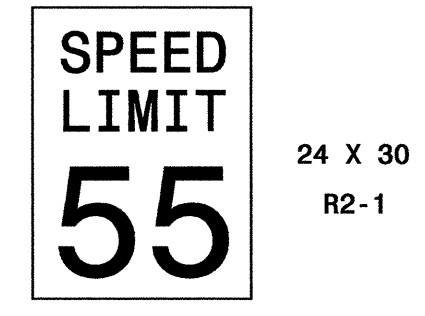
FILENAME: Signs
NORTH CAROLINA D.O.T. SIGN DETAIL

TYPE "D" SIGNS

22-067-2009 09h \\U-2826A\Traffic\Signing\CADD\Sign Designs\Signs.dgn
 s\johns - 11 FEB 22 2009 10:42

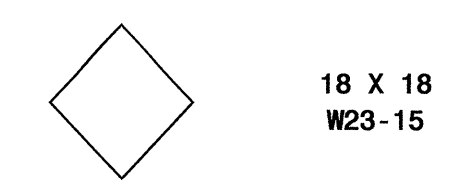
TIP NO. U-2826A	SHEET NO. SIGN-13
APPROVED: _____	
DATE: _____	
SEAL	

403 QUANTITY REQ'D 2

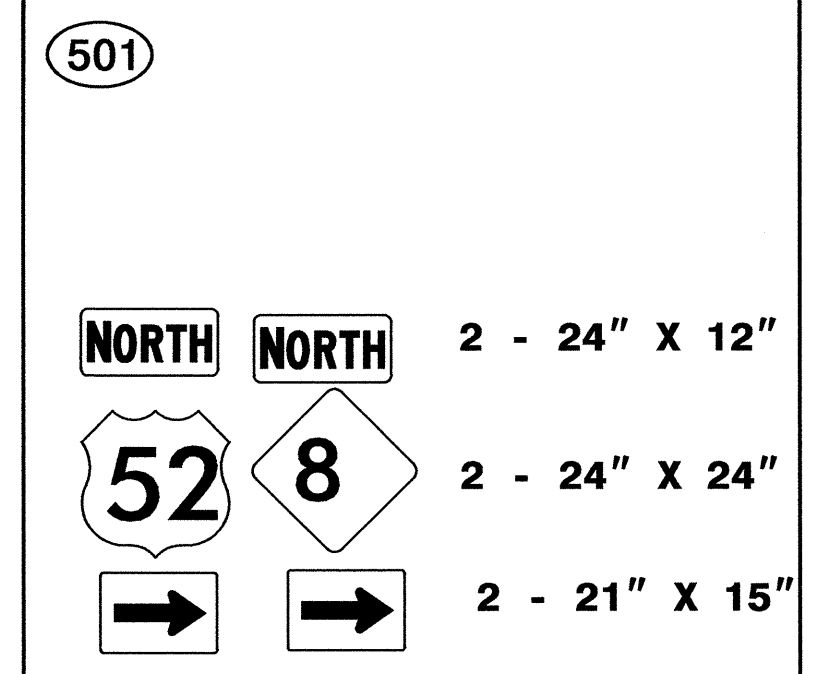


ONE "U" POST PER SIGN

417 QUANTITY REQ'D 8



MOUNT BELOW SIGN 416...
IN 8 INSTALLATIONS



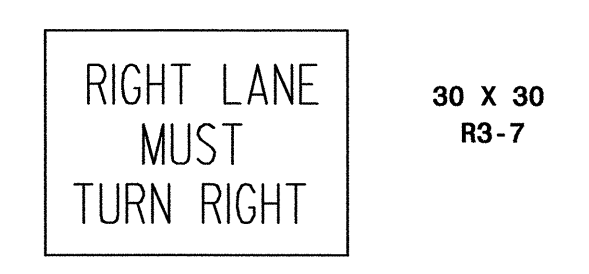
TWO "U" POSTS PER SIGN

410 QUANTITY REQ'D 2

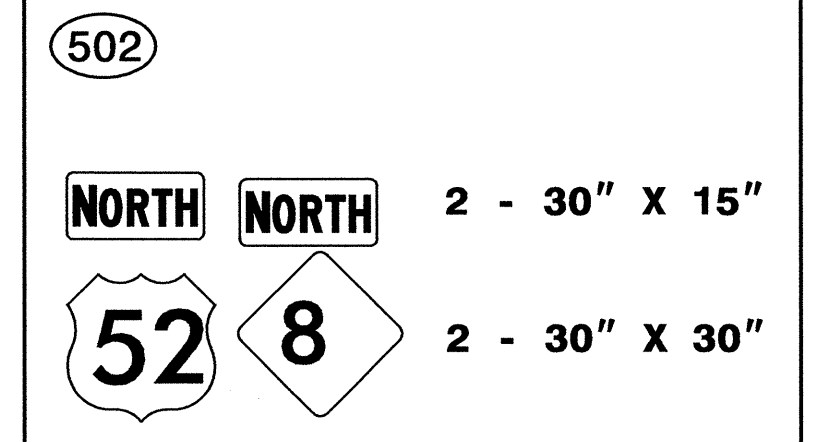


ONE "U" POST PER SIGN

455 QUANTITY REQ'D 1

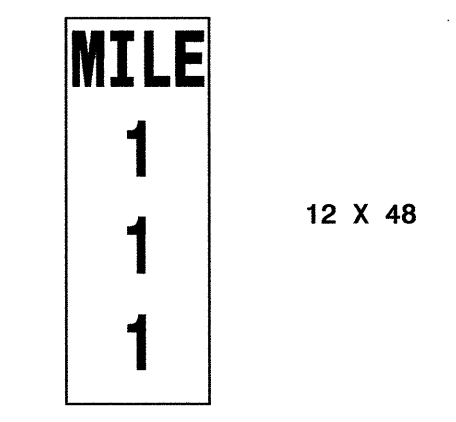


ONE "U" POST PER SIGN



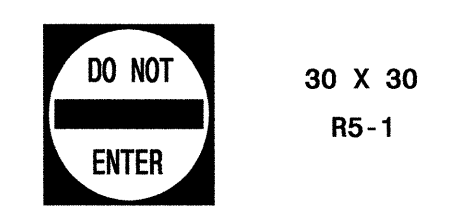
TWO "U" POSTS PER SIGN

QUANTITY REQ'D 2

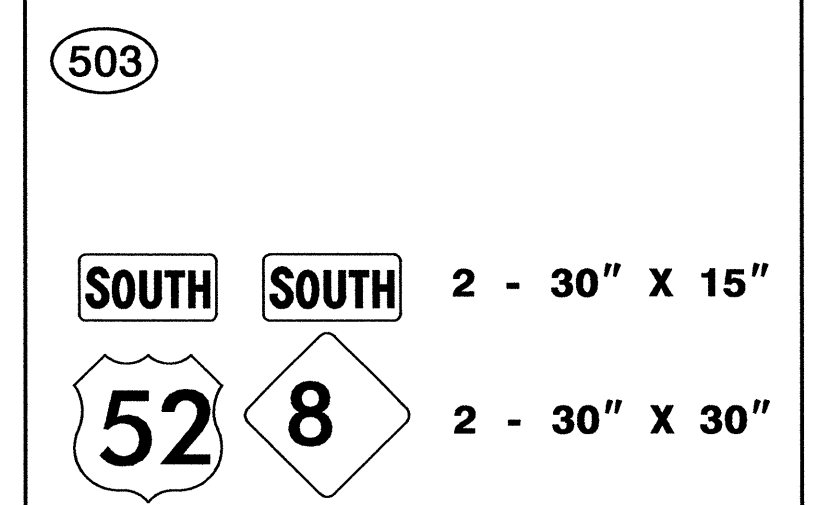


ONE "U" POST PER SIGN

411 QUANTITY REQ'D 1

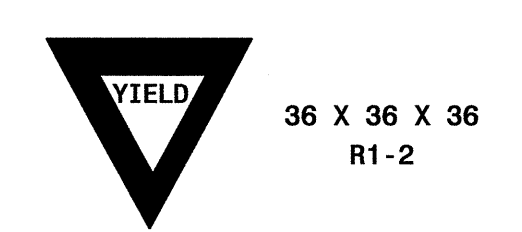


ONE "U" POST PER SIGN



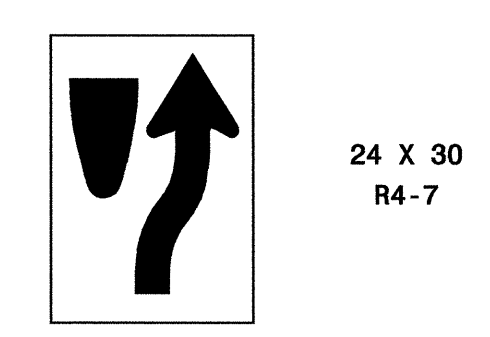
TWO "U" POSTS PER SIGN

412 QUANTITY REQ'D 1



ONE "U" POST PER SIGN

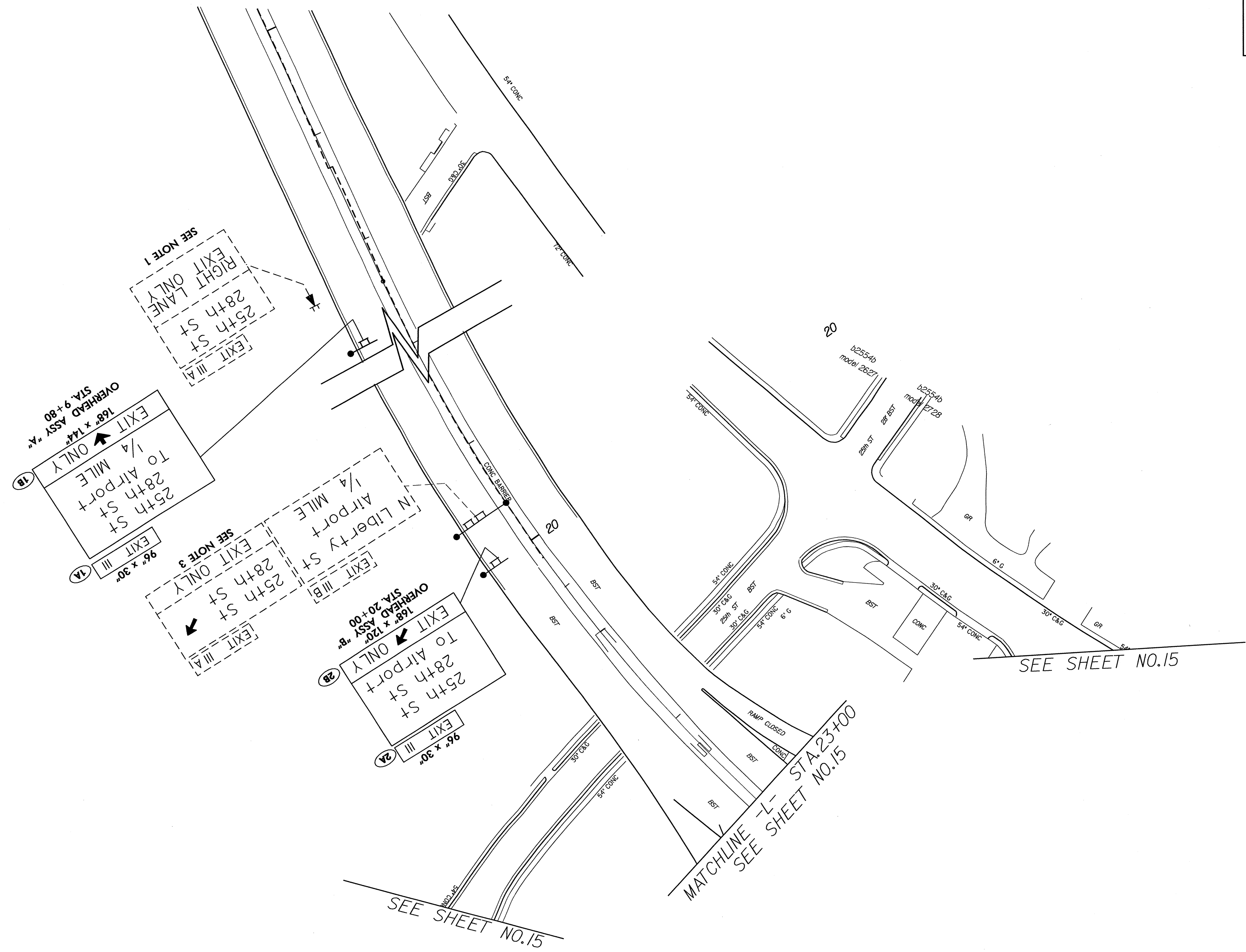
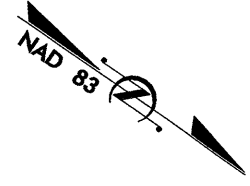
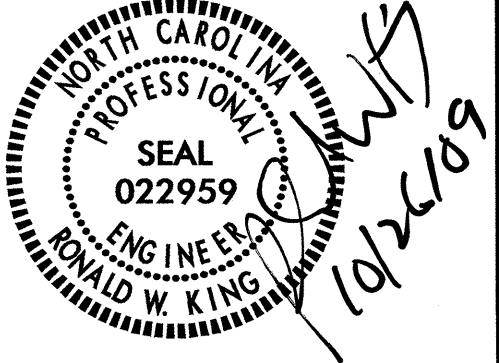
416 QUANTITY REQ'D 8



ONE "U" POST PER SIGN

**TYPE "E", "F",
& MILEMARKER SIGNS**

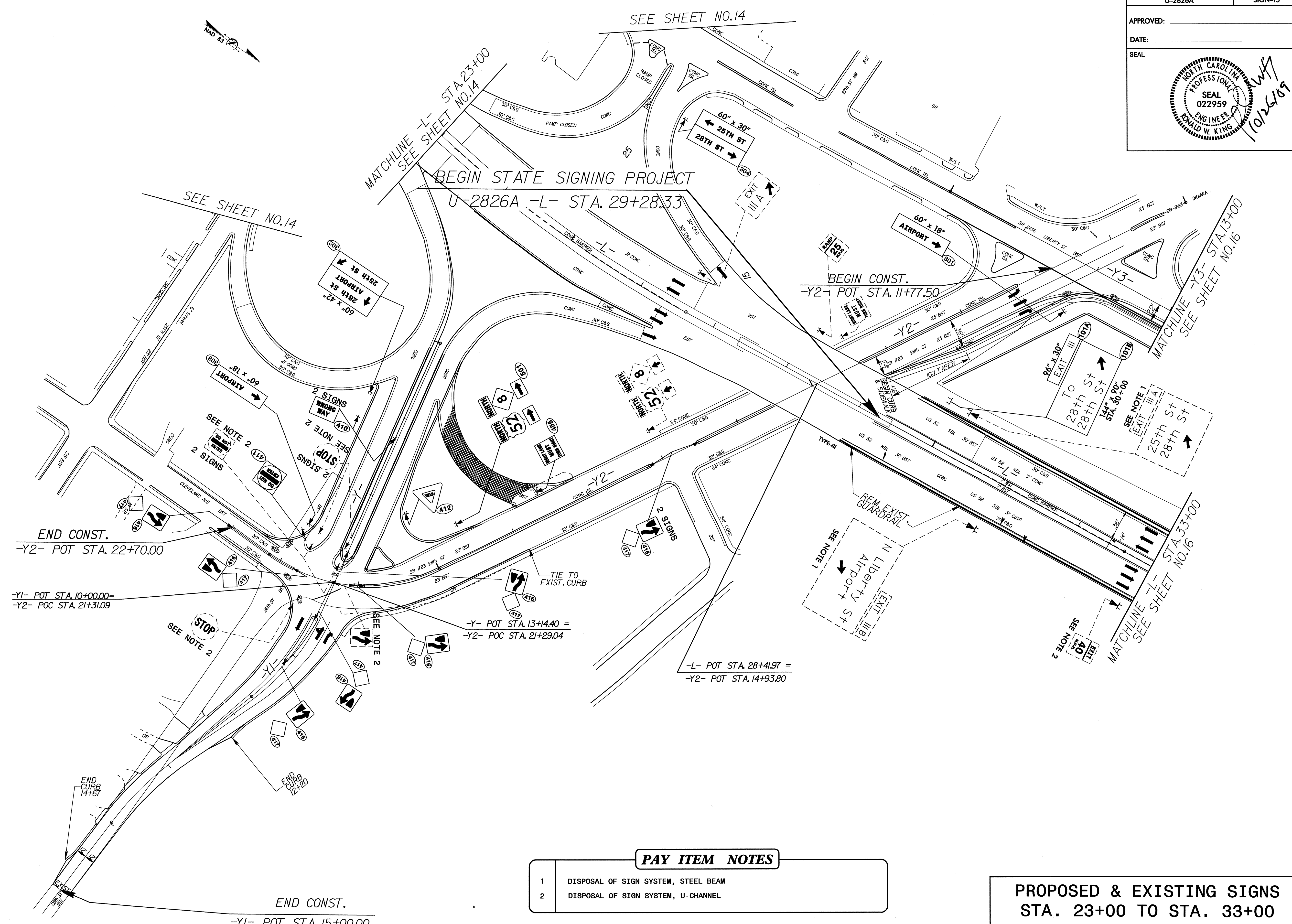
22-001-2009 09:14 U2826A Traffic Signing CADDD\Signting Layout Plans\Signting\U2826A1.tle.dgn
 s:\johns_rn\EC22162



PAY ITEM NOTES

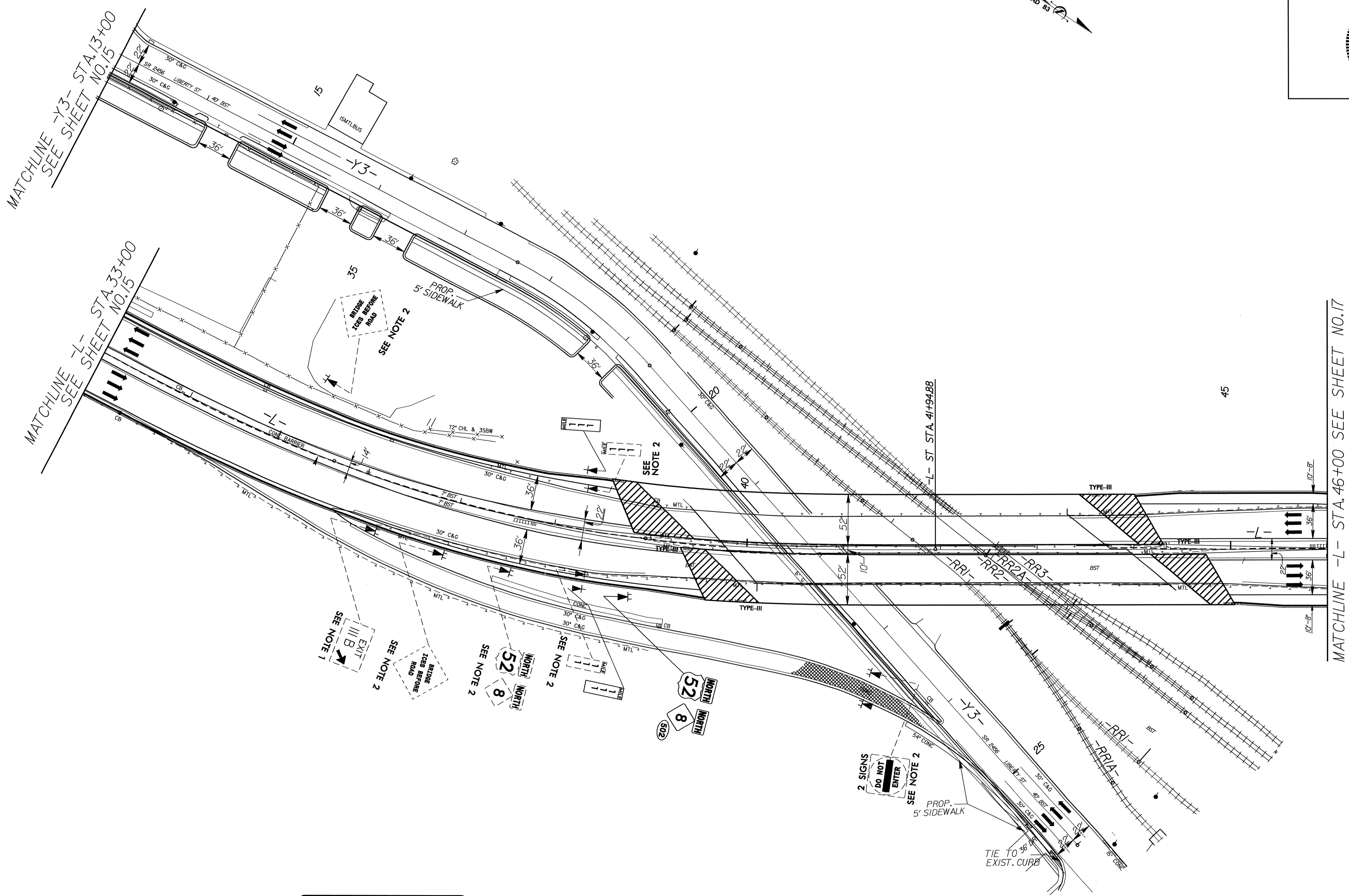
- | | |
|---|-------------------------------------|
| 1 | DISPOSAL OF SIGN SYSTEM, STEEL BEAM |
| 3 | DISPOSAL OF SIGN SYSTEM, OVERHEAD |

**PROPOSED & EXISTING SIGNS
US 52(-L-)**



**PROPOSED & EXISTING SIGNS
STA. 23+00 TO STA. 33+00
US 52 (-L-)**

APPROVED: _____
 DATE: _____

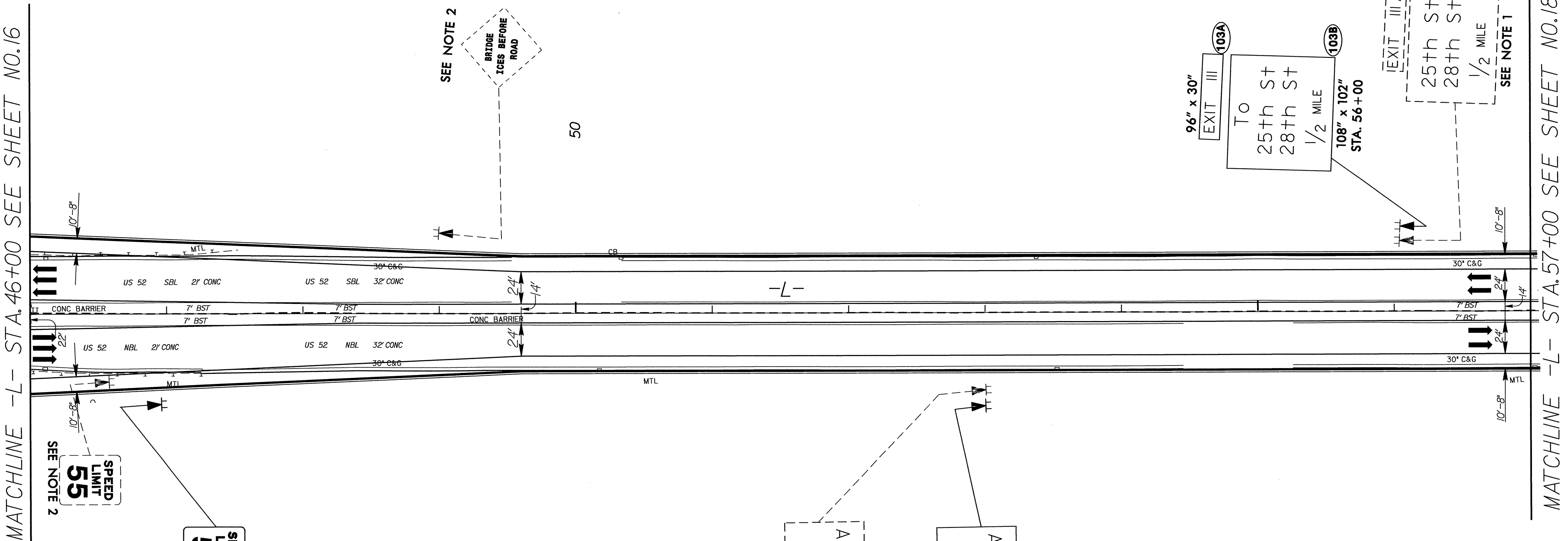
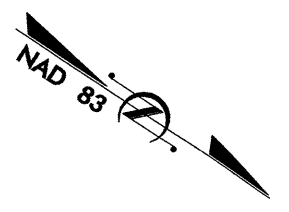


PAY ITEM NOTES	
1	DISPOSAL OF SIGN SYSTEM, STEEL BEAM
2	DISPOSAL OF SIGN SYSTEM, U-CHANNEL

**PROPOSED & EXISTING SIGNS
 STA. 33+00 TO STA. 46+00
 US 52 (-L-)**

22-061-2009 09:48 U-2826A\Traffic\Signing\Layout Plans\Signing\U-2826as05.psh
 s:\johns\atl\110221842

APPROVED: _____
 DATE: _____



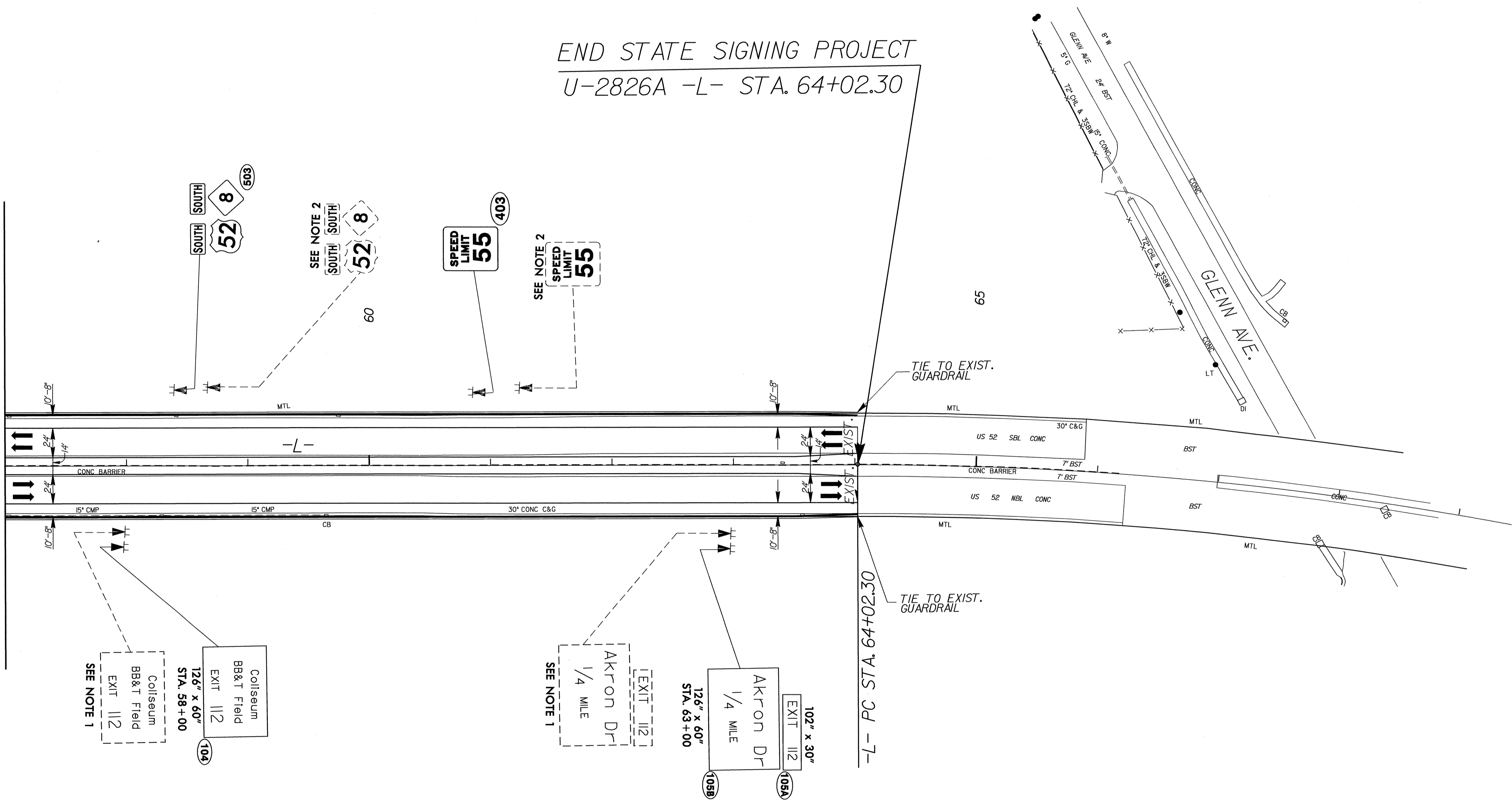
PAY ITEM NOTES	
1	DISPOSAL OF SIGN SYSTEM, STEEL BEAM
2	DISPOSAL OF SIGN SYSTEM, U-CHANNEL

**PROPOSED & EXISTING SIGNS
 STA. 46+00 TO STA. 57+00
 US 52(-L-)**



END STATE SIGNING PROJECT
U-2826A -L- STA. 64+02.30

MATCHLINE -L- STA. 57+00 SEE SHEET NO.17



PAY ITEM NOTES	
1	DISPOSAL OF SIGN SYSTEM, STEEL BEAM
2	DISPOSAL OF SIGN SYSTEM, U-CHANNEL

PROPOSED & EXISTING SIGNS
STA. 57+00 TO STA. 64+02.30
US 52 (-L-)