

STATE OF NORTH CAROLINA
DIVISION OF HIGHWAYS

STATE PROJECT REFERENCE NO.	SHEET NO.
B-4435	TCP-1

**PLAN FOR PROPOSED
TRAFFIC CONTROL
BERTIE COUNTY**

B-4435

ROADWAY STANDARD DRAWINGS

THE FOLLOWING ROADWAY STANDARDS AS SHOWN IN "ROADWAY STANDARD DRAWINGS" - PROJECT SERVICES UNIT - N.C. DEPARTMENT OF TRANSPORTATION - RALEIGH, N.C., DATED JULY 2006 ARE APPLICABLE TO THIS PROJECT AND BY REFERENCE HEREBY ARE CONSIDERED A PART OF THESE PLANS:

STD. NO.	TITLE
1101.03	TEMPORARY ROAD CLOSURES
1101.05	WORK ZONE VEHICLE ACCESSES
1110.01	STATIONARY WORK ZONE SIGNS
1145.01	BARRICADES

INDEX OF SHEETS

SHEET NO.	TITLE
TCP-1	LIST OF APPLICABLE ROADWAY STANDARD DRAWINGS, INDEX OF SHEETS, AND LEGEND
TCP-2	PROJECT NOTES AND PHASING
TCP-3	OFF-SITE DETOUR ROAD CLOSURE

LEGEND

- GENERAL**
- DIRECTION OF TRAFFIC FLOW
 - NORTH ARROW
 - PROPOSED PVMT. EXIST. PVMT.
 - WORK AREA
 - REMOVAL OF EXISTING PAVEMENT
- TRAFFIC CONTROL DEVICES**
- TYPE I BARRICADE
 - TYPE II BARRICADE
 - TYPE III BARRICADE
 - CONE
 - DRUM SKINNY DRUM
 - FLASHING ARROW PANEL (TYPE C)
 - STATIONARY SIGN
 - PORTABLE SIGN
 - STATIONARY OR PORTABLE SIGN
 - CRASH CUSHION
 - CHANGEABLE MESSAGE SIGN
 - TRUCK MOUNTED IMPACT ATTENUATOR (TMIA)
 - POLICE
 - FLAGGER
- PAVEMENT MARKINGS**
- CRYSTAL/CRYSTAL PAVEMENT MARKER
 - YELLOW/YELLOW PAVEMENT MARKER
 - CRYSTAL/RED PAVEMENT MARKER
 - PAVEMENT MARKING SYMBOLS

TIP PROJECT:

09-SEP-2009 14:55 \\dot\gffsr\02701\p\p\ip\projects-b\4435\traffic\trafficcontrol\tcp\B-4435_TC-TCP_01.dgn
samiller AT WZTC248315

APPROVED: <i>Jessica Kuse</i> DATE: <i>9/11/09</i>	PLAN PREPARED BY: N.C.D.O.T. WORK ZONE TRAFFIC CONTROL UNIT
SEAL	J. S. BOURNE, P.E. TRAFFIC CONTROL ENGINEER
	J. S. KITE, P.E. TRAFFIC CONTROL PROJECT ENGINEER
	J. D. KUSE, P.E. TRAFFIC CONTROL PROJECT DESIGN ENGINEER
	STEVE MILLER, P.E. TRAFFIC CONTROL DESIGN ENGINEER / TECHNICIAN

PROJECT NOTES

PROJ. REFERENCE NO.	SHEET NO.
B-4435	TCP-2

GENERAL NOTES

CHANGES MAY BE REQUIRED WHEN PHYSICAL DIMENSIONS IN THE DETAIL DRAWINGS, STANDARD DETAILS, AND ROADWAY DETAILS ARE NOT ATTAINABLE TO MEET FIELD CONDITIONS OR RESULT IN DUPLICATE OR UNDESIRED OVERLAPPING OF DEVICES. MODIFICATION MAY INCLUDE: MOVING, SUPPLEMENTING, COVERING, OR REMOVAL OF DEVICES AS DIRECTED BY THE ENGINEER.

THE FOLLOWING GENERAL NOTES APPLY AT ALL TIMES FOR THE DURATION OF THE CONSTRUCTION PROJECT EXCEPT WHEN OTHERWISE NOTED IN THE PLAN OR DIRECTED BY THE ENGINEER.

TRAFFIC PATTERN ALTERATIONS

- A) NOTIFY THE ENGINEER TWENTY ONE (21) CALENDAR DAYS PRIOR TO ANY TRAFFIC PATTERN ALTERATION.

SIGNING

- B) INSTALL ADVANCE WORK ZONE WARNING SIGNS NO MORE THAN THREE (3) DAYS PRIOR TO THE BEGINNING OF CONSTRUCTION.
- C) PROVIDE PERMANENT SIGNING.
- D) PROVIDE SIGNING AND DEVICES REQUIRED TO CLOSE THE ROAD ACCORDING TO THE ROADWAY STANDARD DRAWINGS AND TRAFFIC CONTROL PLANS.

STATE FORCES WILL BE RESPONSIBLE FOR PROVIDING SIGNING REQUIRED FOR THE OFF-SITE DETOUR ROUTE.

- E) COVER OR REMOVE ALL SIGNS AND DEVICES REQUIRED TO CLOSE THE ROAD WHEN ROAD CLOSURE IS NOT IN OPERATION.

STATE FORCES WILL COVER OR REMOVE ALL SIGNS REQUIRED FOR THE OFF-SITE DETOUR WHEN THE DETOUR IS NOT IN OPERATION.

- F) ENSURE ALL NECESSARY SIGNING IS IN PLACE PRIOR TO ALTERING ANY TRAFFIC PATTERN.

TRAFFIC CONTROL DEVICES

- G) PLACE TYPE III BARRICADES, WITH "ROAD CLOSED" SIGN R11-2 ATTACHED, OF SUFFICIENT LENGTH TO CLOSE ENTIRE ROADWAY. WHERE LOCAL TRAFFIC MUST BE MAINTAINED, THEY MAY BE PLACED IN A STAGGERED PATTERN.

PAVEMENT MARKINGS AND MARKERS

- H) STATE FORCES WILL INSTALL PAVEMENT MARKINGS AND PAVEMENT MARKERS ON THE FINAL SURFACE.

LOCAL NOTES

1. NOTIFY BERTIE COUNTY SCHOOLS AND BERTIE COUNTY EMERGENCY SERVICES AT LEAST ONE MONTH PRIOR TO CLOSING SR 1100 (GRABTOWN ROAD) TO THROUGH TRAFFIC.
2. INSTALL SIGNS BEFORE INSTALLING THE BARRICADES WHEN CLOSING THE ROADWAY TO TRAFFIC. REMOVE BARRICADES BEFORE REMOVING THE SIGNS WHEN OPENING THE ROADWAY TO TRAFFIC. INSTALL/REMOVE SIGNS AND BARRICADES WITHIN THE SAME CALENDAR DAY.
3. ALL SIGN SPACING DIMENSIONS ARE APPROXIMATE; FIELD ADJUST AS NECESSARY OR AS DIRECTED.
4. MAINTAIN LOCAL TRAFFIC WITHIN ROAD CLOSURE.

PHASING

NOTE: NOTIFY STATE FORCES 21 DAYS PRIOR TO ROAD CLOSURE TO ALLOW TIME FOR STATE FORCES TO INSTALL OFFSITE DETOUR SIGNAGE.

STEP 1 INSTALL SIGNS AND BARRICADES CLOSING SR 1100 (GRABTOWN ROAD) TO THROUGH TRAFFIC AS SHOWN ON TCP-3 AND IN ACCORDANCE WITH ROADWAY STANDARD DRAWING 1101.03, SHEET 1 OF 9 AND ROADWAY STANDARD DRAWING 1145.01, SHEET 1 OF 1. (SEE LOCAL NOTES NO. 1, 2 AND 3)

STEP 2 CONSTRUCT THE FOLLOWING WITHIN THE ROAD CLOSURE: (SEE LOCAL NOTE NO. 4)


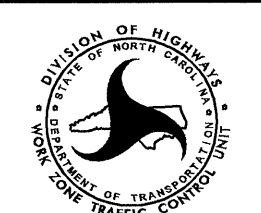
- REMOVE THE EXISTING STRUCTURE
- CONSTRUCT THE PROPOSED STRUCTURE
- CONSTRUCT THE PROPOSED ROADWAY SECTION -L- UP TO BUT NOT INCLUDING THE FINAL LAYER OF SURFACE

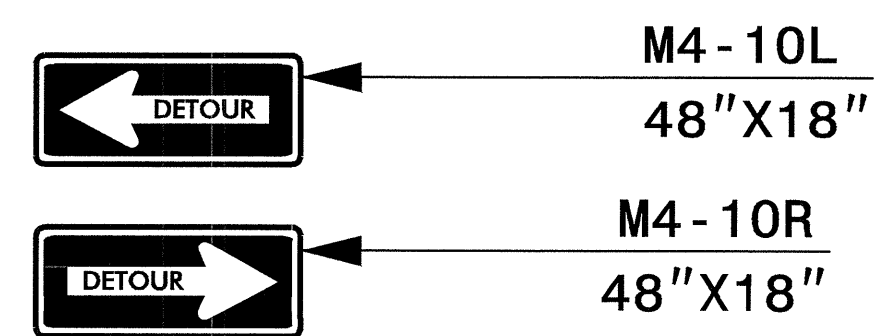
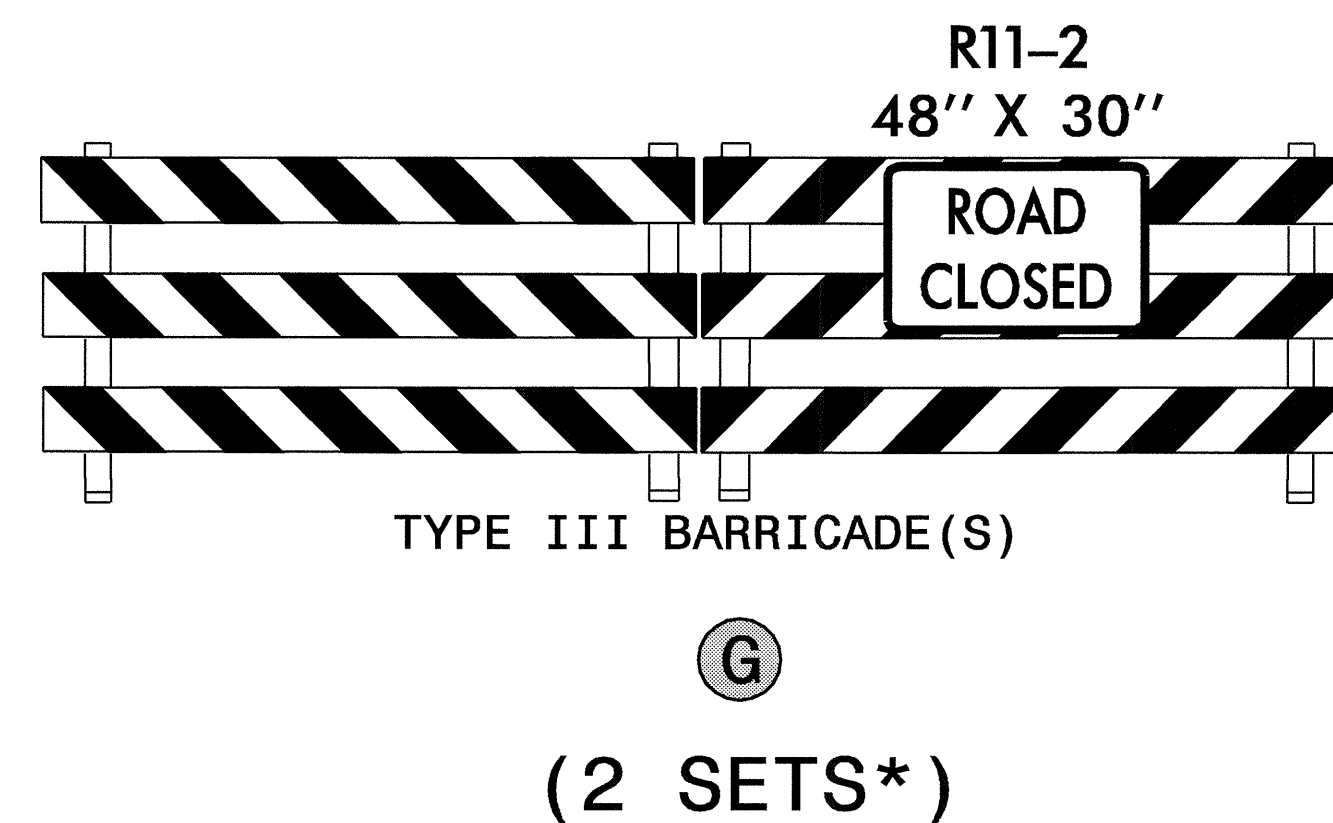
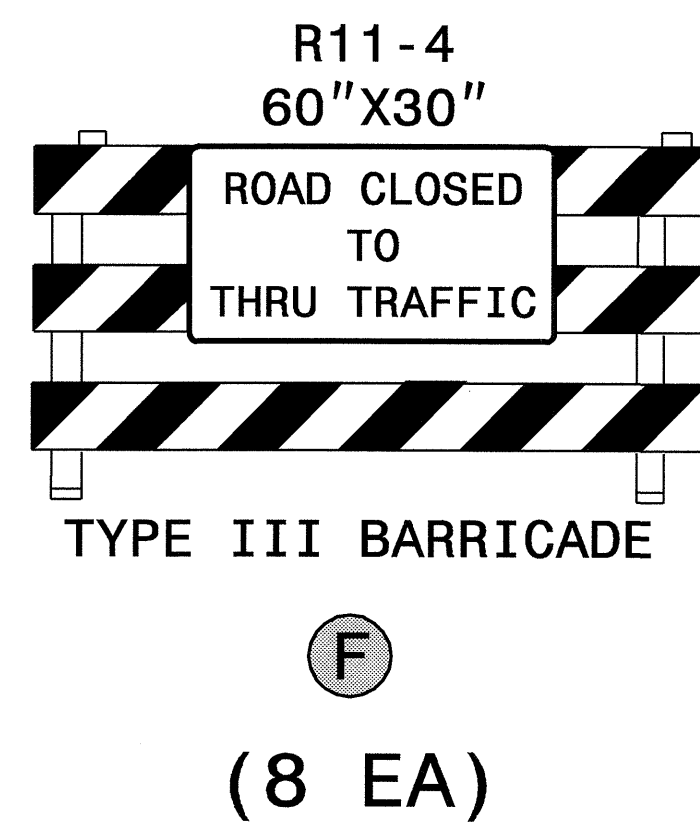
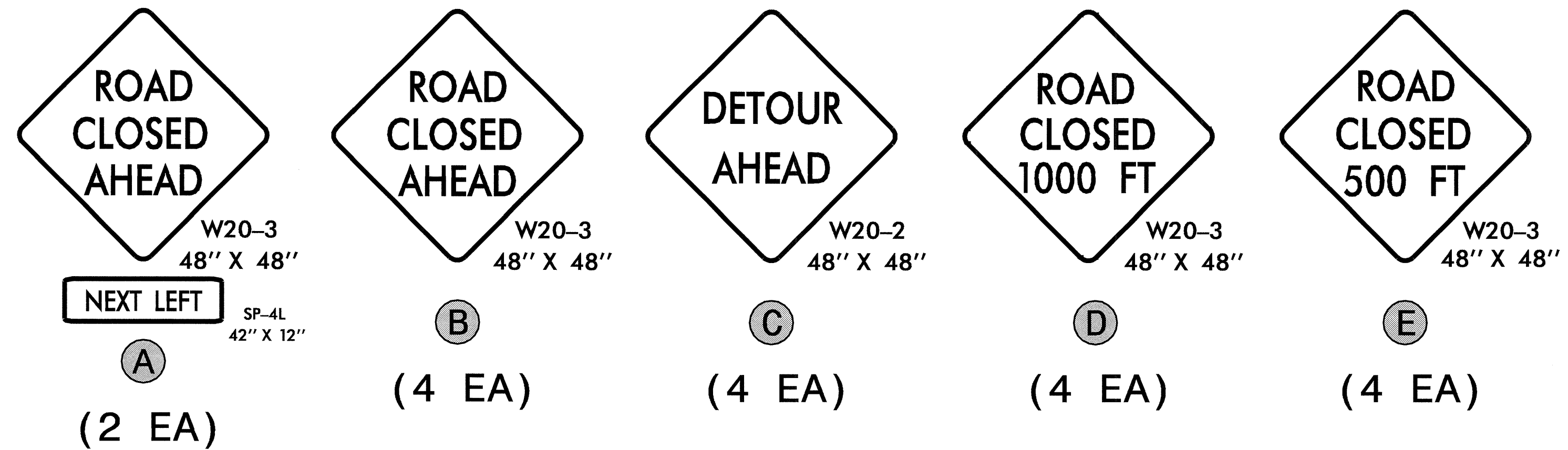
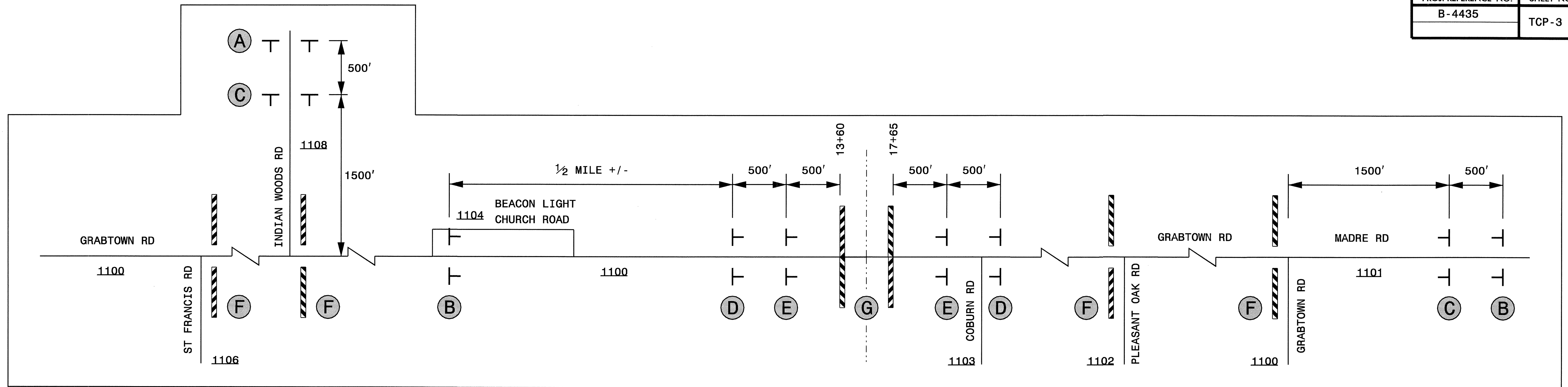
NOTE: NOTIFY STATE FORCES 21 DAYS PRIOR TO OPENING ROAD TO ALLOW TIME FOR STATE FORCES TO APPLY FINAL PAVEMENT MARKINGS AFTER STEP 3 IS COMPLETE.

STEP 3 PLACE THE FINAL LAYER OF SURFACE COURSE.

STEP 4 REMOVE ALL BARRICADES AND ADVANCED WORK ZONE WARNING SIGNS AND OPEN SR 1100 (GRABTOWN ROAD) TO THROUGH TRAFFIC. (SEE LOCAL NOTE NO. 2)

I:\SEP-2009\13457\DOT\dfs\root\01\Proj\Tpp\projects-b\4435\traffico\trafficocontrol\tcp-b-4435-tc-tcp-02.dgn
sdmiller AT WZTC248375

APPROVED: <i>Jessica D. Kuse</i> DATE: 9/10/09	PROJECT NOTES AND PHASING		REVISIONS	
			SCALE: NONE	
	DATE: 10/08			
	DWG. BY: SDM			
	DESIGN BY: SDM			
REVIEWED BY: JDK				



PLACE SIGNS M4-10 L AND R ON TYPE III BARRICADES LABELED 'F' I AS DIRECTED BY THE DIVISION.

*BARRICADES USED TO CLOSE A ROADWAY SHALL EXTEND ACROSS THE ENTIRE ROADWAY. WHERE LOCAL TRAFFIC MUST BE MAINTAINED, THEY MAY BE PLACED IN A STAGGERED POSITION.

APPROVED: *Jessica D. Kuse* DATE: 10/14/09

OFF-SITE DETOUR ROAD CLOSURE

SCALE: NONE
DATE: 10/08
DWG. BY: SDM
DESIGN BY: SDM
REVIEWED BY: JDK



REVISIONS	

13-OCT-2009 15:29 D:\cristoforo\Projects\1100\TrafficControl\Top\B-4435-TC-TCP-03.dgn