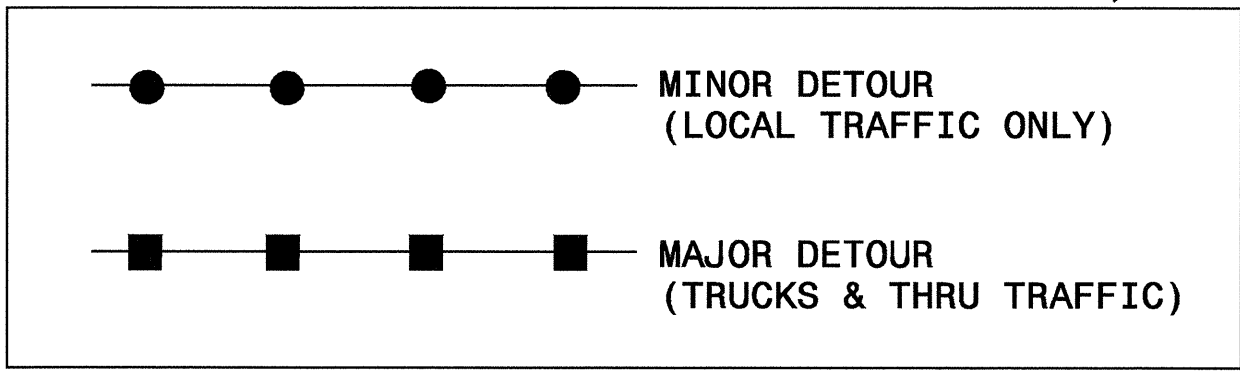
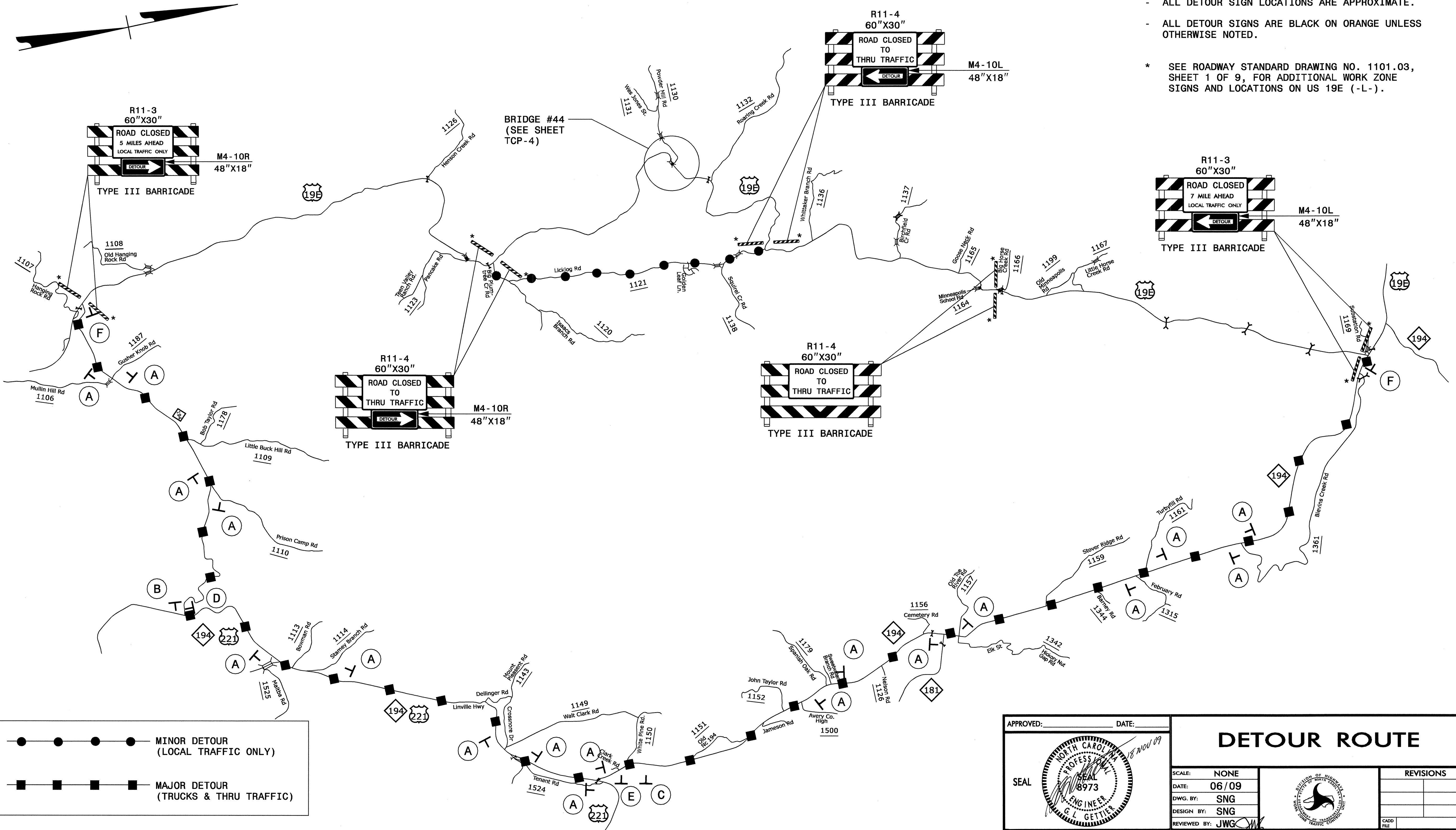


NOTES

- ALL DETOUR SIGN LOCATIONS ARE APPROXIMATE.
- ALL DETOUR SIGNS ARE BLACK ON ORANGE UNLESS OTHERWISE NOTED.
- * SEE ROADWAY STANDARD DRAWING NO. 1101.03, SHEET 1 OF 9, FOR ADDITIONAL WORK ZONE SIGNS AND LOCATIONS ON US 19E (-L-).



18-NOV-2009 10:27 \\dot\dfsroot\proj\h\proj\trafficcontrol\tcp\b3608_top\b3608_top-top-6.dgn sngreen

APPROVED: _____ DATE: _____	DETOUR ROUTE									
SCALE: NONE	DATE: 06/09	<table border="1"> <thead> <tr> <th colspan="2">REVISIONS</th> </tr> </thead> <tbody> <tr> <td> </td> <td> </td> </tr> <tr> <td> </td> <td> </td> </tr> <tr> <td> </td> <td> </td> </tr> </tbody> </table>	REVISIONS							
REVISIONS										
DWG. BY: SNG	DESIGN BY: SNG	<table border="1"> <tr> <td>CADD FILE</td> </tr> </table>	CADD FILE							
CADD FILE										
REVIEWED BY: JWG										

