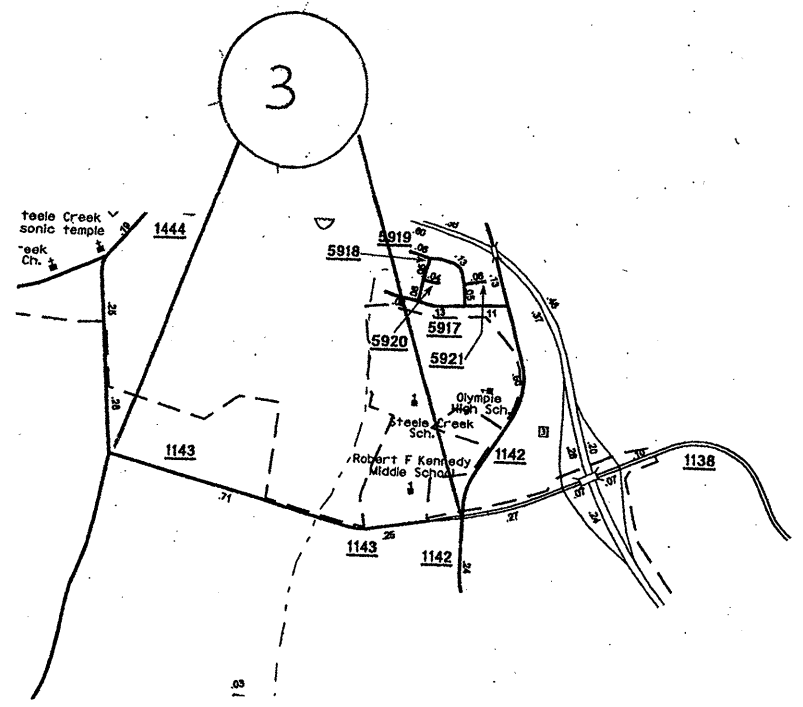
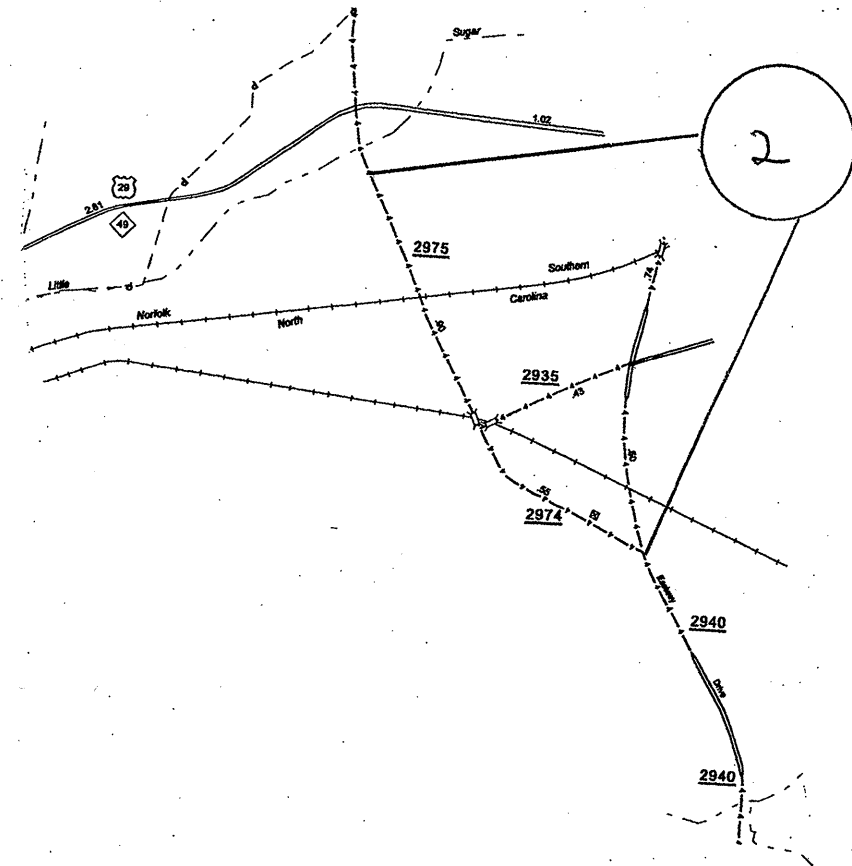
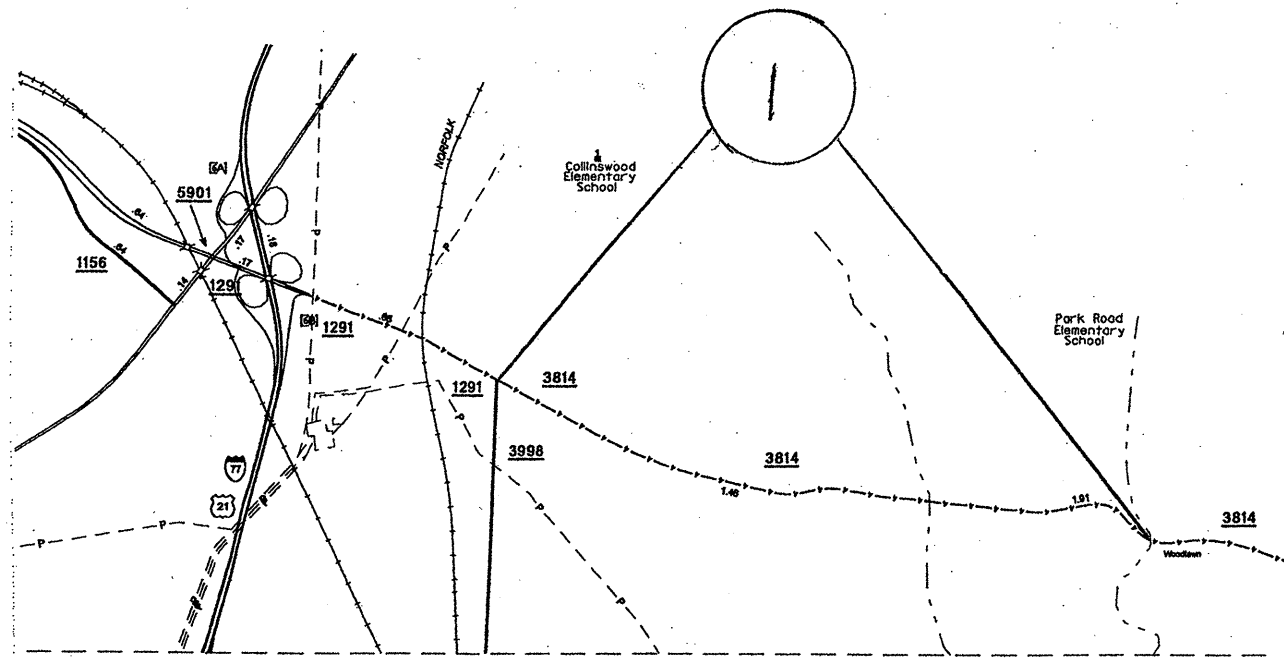


STATE	PROJECT NO.	SHEET NO.	TOTAL SHEETS
N.C.		1	11
WBS: 10CR.106 01.30 etc.			



ENLARGED MUNICIPAL AND SUBURBAN AREAS

MECKLENBURG COUNTY

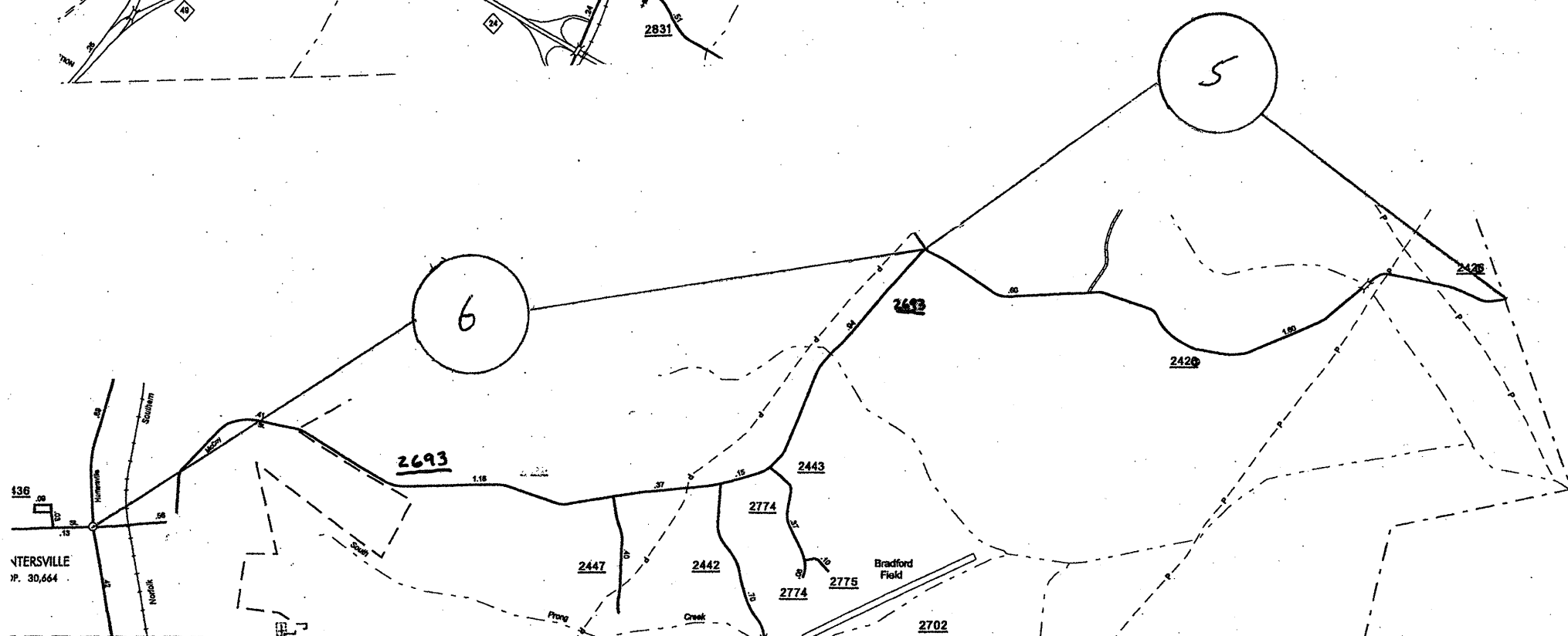
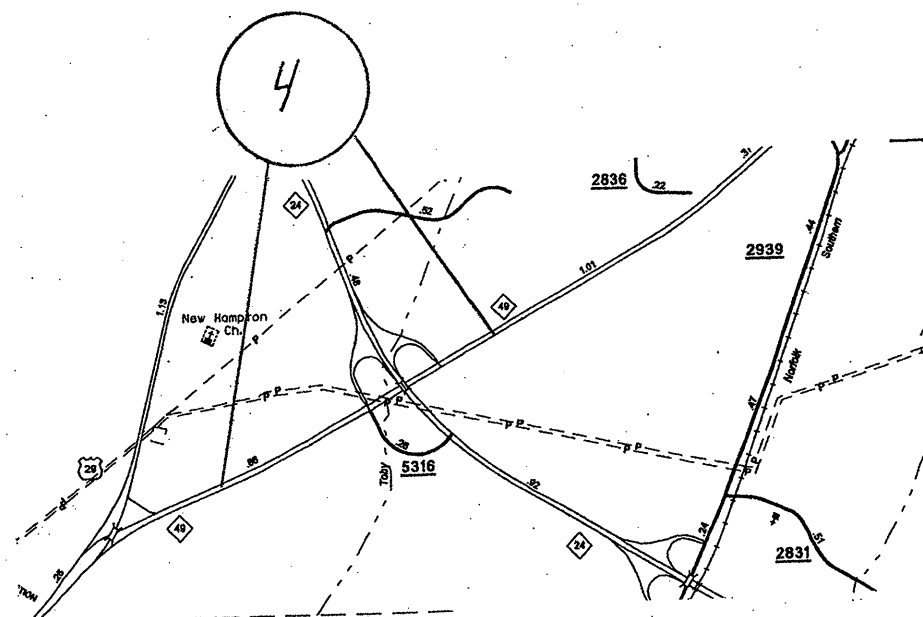
NORTH CAROLINA

PREPARED BY THE
NORTH CAROLINA DEPARTMENT OF TRANSPORTATION
DIVISION OF HIGHWAYS - GIS UNIT

IN COOPERATION WITH THE
U.S. DEPARTMENT OF TRANSPORTATION
FEDERAL HIGHWAY ADMINISTRATION

MAP #	ROUTE	DESCRIPTION
1	Woodlawn Rd (SR 3814)	From Pvt. Jt. E. of South Blvd. To Park Rd
2	Sugar Creek Rd (SR 2974/2975)	From 550' South of US 29 (N. Tryon St to Eastway Dr. (SR 2940)
3	Brown-Grier Rd (SR 1143)	From Arrowood Dr. To Steele Creek Rd (NC 160)

STATE	PROJECT NO.	SHEET NO.	TOTAL SHEETS
N.C.		2	11
WBS: 10CR.10601.30, etc			



ENLARGED MUNICIPAL AND SUBURBAN AREAS

MECKLENBURG COUNTY

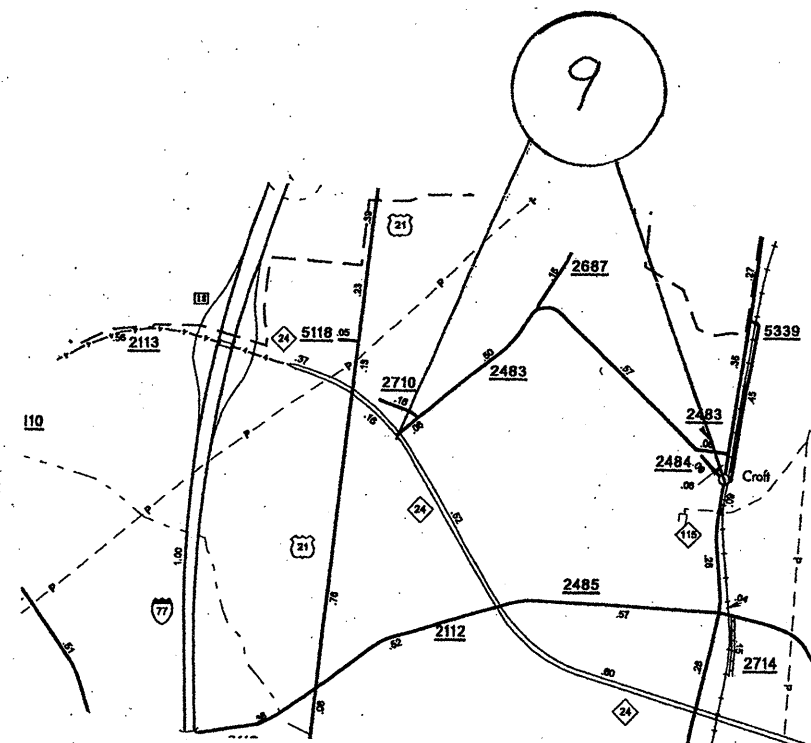
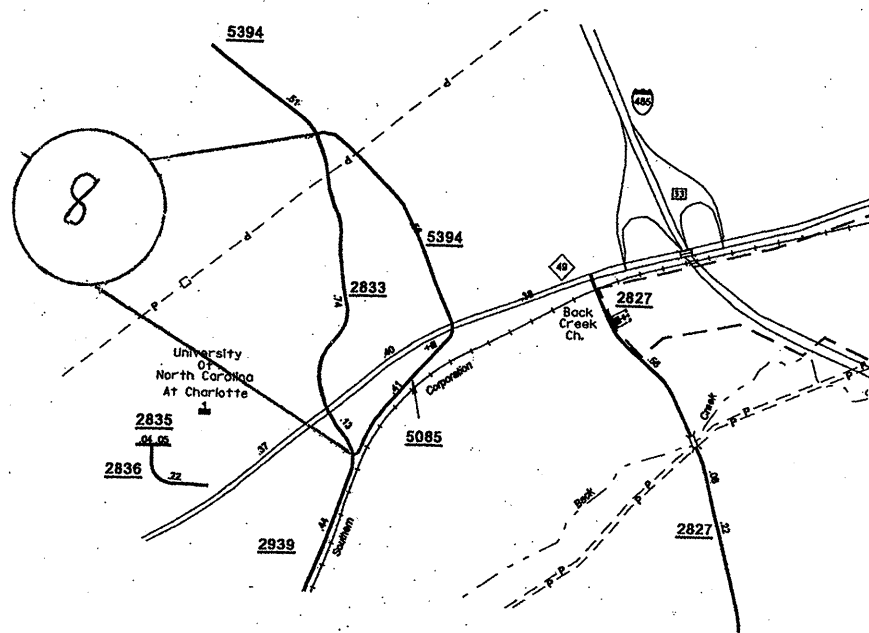
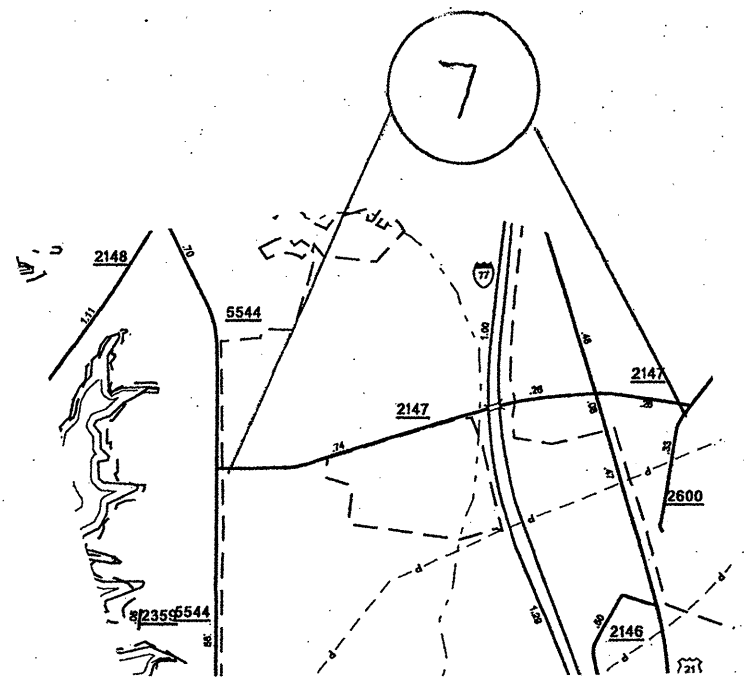
NORTH CAROLINA

PREPARED BY THE
NORTH CAROLINA DEPARTMENT OF TRANSPORTATION
DIVISION OF HIGHWAYS - GIS UNIT

IN COOPERATION WITH THE
U.S. DEPARTMENT OF TRANSPORTATION
FEDERAL HIGHWAY ADMINISTRATION

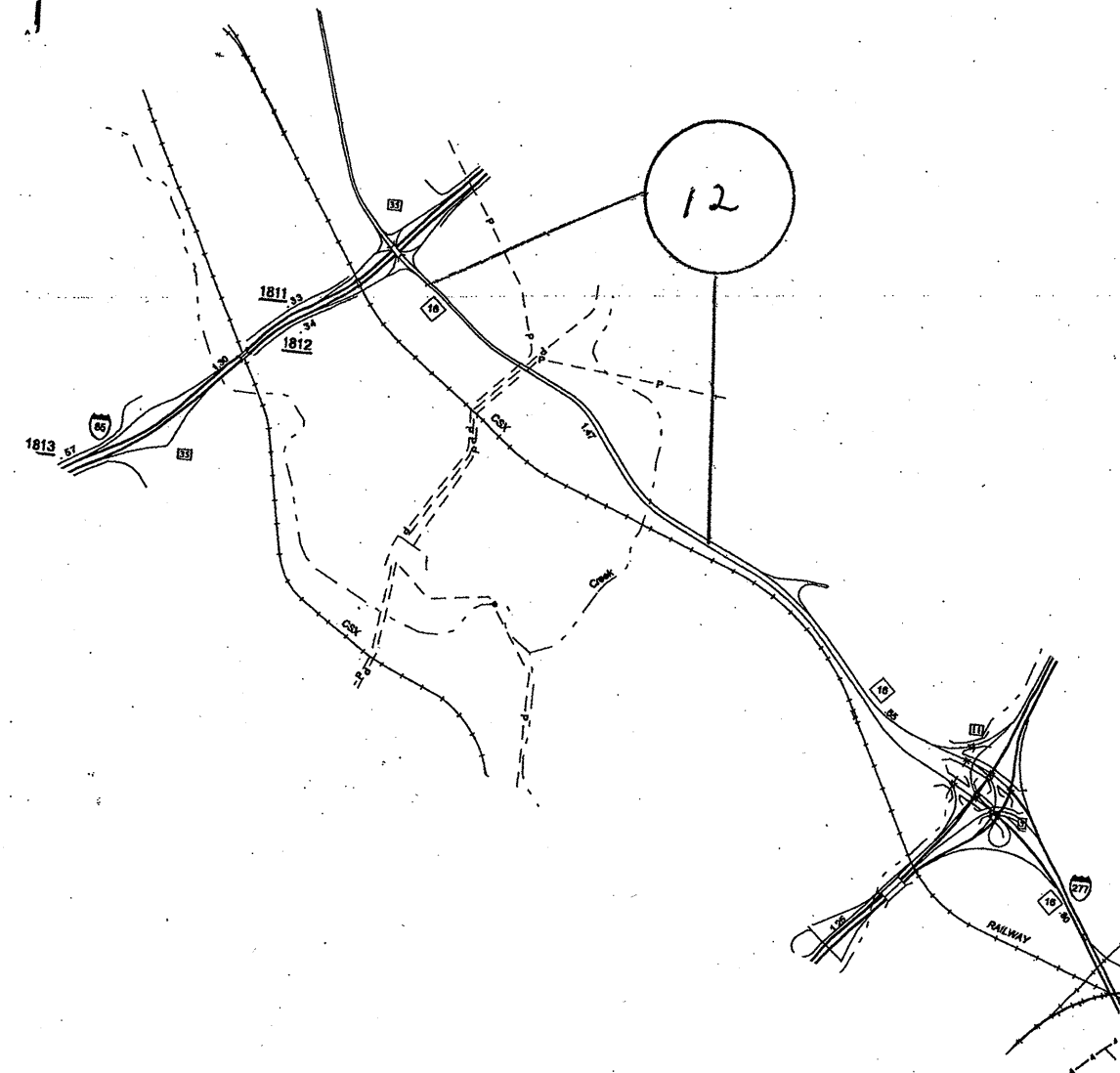
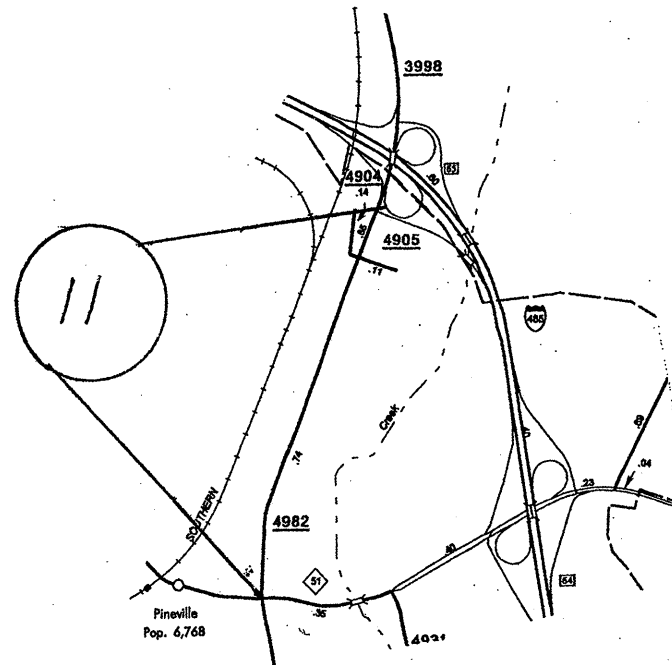
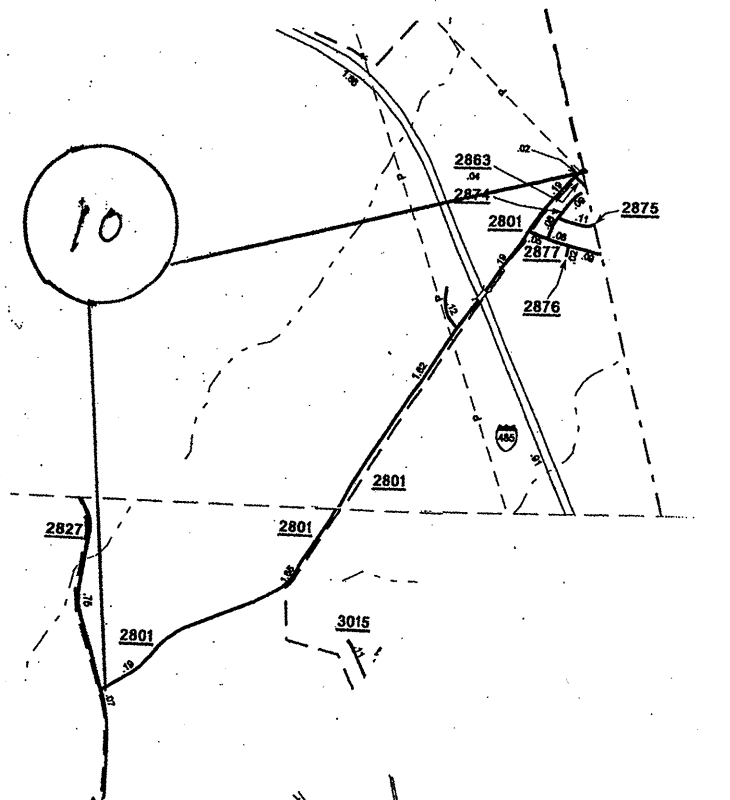
MAP #	ROUTE	DESCRIPTION
4	University City Blvd (NC 49)	From 500' E of Shopping Ctr to Pvt. JT. At Harris Teeter Driveway
5	E. Rocky River Rd (SR 2420)	From Cabarrus County Line to Davidson-Concord Rd (SR 2448)
6	Davidson-Concord Rd (SR 2448)	From NC 115 to E. Rocky River Rd (SR 2420)

STATE	PROJECT NO.	SHEET NO.	TOTAL SHEETS
N.C.		3	11
WBS: 10CR. 10601. 30, etc			



ENLARGED MUNICIPAL AND SUBURBAN AREAS
MECKLENBURG COUNTY
 NORTH CAROLINA
 PREPARED BY THE
 NORTH CAROLINA DEPARTMENT OF TRANSPORTATION
 DIVISION OF HIGHWAYS - GIS UNIT
 IN COOPERATION WITH THE
 U.S. DEPARTMENT OF TRANSPORTATION
 FEDERAL HIGHWAY ADMINISTRATION

MAP #	ROUTE	DESCRIPTION
7	Westmoreland Rd (SR 2147)	From W. Catawba Ave (SR 5544) to US 21
8	John Kirk Rd (SR 2833)	From University City Blvd (NC 49) to Mallard Creek Rd (SR 5394)
9	Reames Rd (2483)	From Old Statesville Rd (NC 115) to Harris Blvd (NC 24)



ENLARGED MUNICIPAL AND SUBURBAN AREAS

MECKLENBURG COUNTY

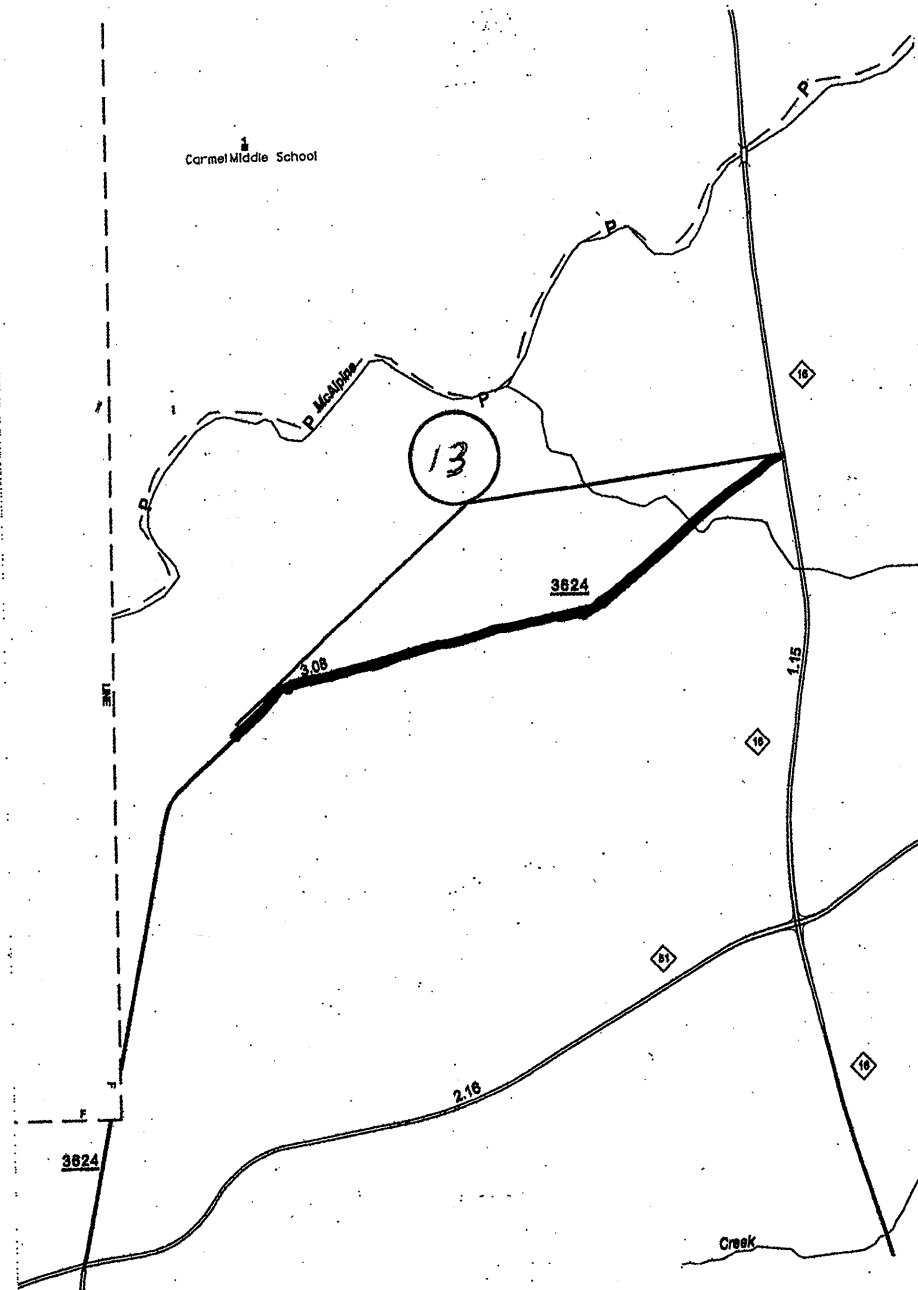
NORTH CAROLINA

PREPARED BY THE
 NORTH CAROLINA DEPARTMENT OF TRANSPORTATION
 DIVISION OF HIGHWAYS - GIS UNIT

IN COOPERATION WITH THE
 U.S. DEPARTMENT OF TRANSPORTATION
 FEDERAL HIGHWAY ADMINISTRATION

MAP #	ROUTE	DESCRIPTION
10	Caldwell Rd (SR 2801)	From Cabarrus County Line to Back Creek Church Rd (SR 2827)
11	N. Polk St. (SR 4982)	From Pineville-Matthews Rd (NC 51) to Bridge Deck on I-485
12	Brookshire Blvd. (NC 16)	From Bridge Deck on I-85 to Concrete Pvt. Jt. 4100' S. of I-85

STATE	PROJECT NO.	SHEET NO.	TOTAL SHEETS
N.C.		5	11
10CR.10601.30, etc.			



ENLARGED MUNICIPAL AND SUBURBAN AREAS

MECKLENBURG COUNTY

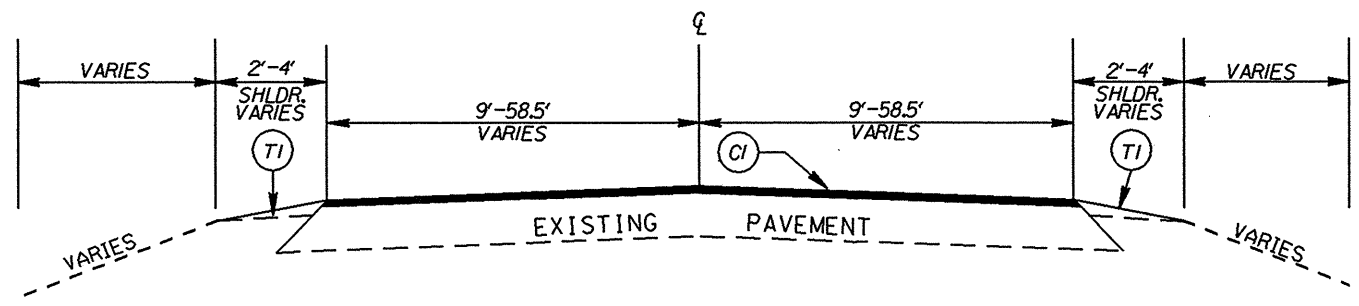
NORTH CAROLINA

PREPARED BY THE
NORTH CAROLINA DEPARTMENT OF TRANSPORTATION
DIVISION OF HIGHWAYS - GIS UNIT

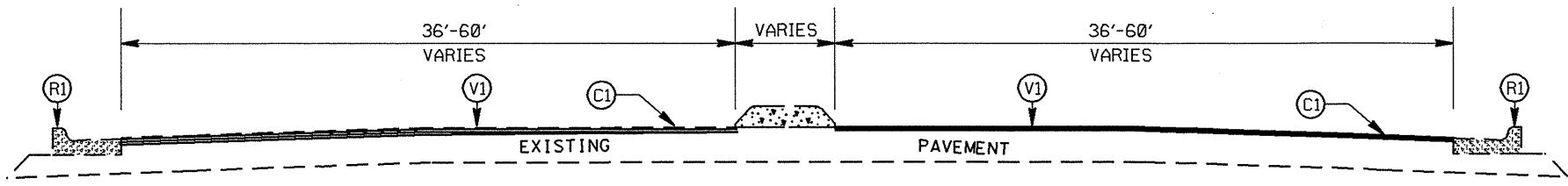
IN COOPERATION WITH THE
U.S. DEPARTMENT OF TRANSPORTATION
FEDERAL HIGHWAY ADMINISTRATION

MAP #	ROUTE	DESCRIPTION
13	SR 3624 (Rea Rd)	From Old Providence Rd to Colony Dr

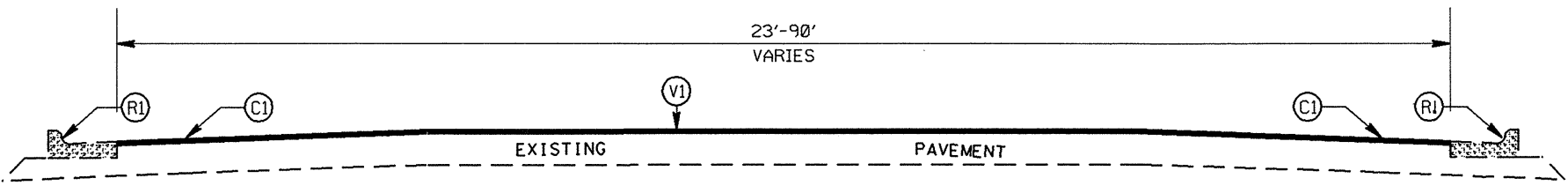
STATE	PROJECT NO.	SHEET NO.	TOTAL SHEETS
N.C.		6	11
WBS: IOCR1060130, etc.			



TYPICAL SECTION NO. 3



TYPICAL SECTION NO. 2



TYPICAL SECTION NO. 1

PAVEMENT SCHEDULE	
C1	PROP. APPROX. 1.5" ASPHALT CONCRETE SURFACE COURSE, TYPE S9.5C, AT AN AVERAGE RATE OF 168 LBS. PER SQ. YD.
D1	PROP. APPROX. 2.5" ASPHALT CONCRETE INTERMEDIATE COURSE, TYPE I19.0C, AT AN AVERAGE RATE OF 285 LBS. PER SQ. YD. IN EACH OF TWO LAYERS
E1	PROP. APPROX. 5.5" ASPHALT CONCRETE BASE COURSE, TYPE B25.0C, AT AN AVERAGE RATE OF 627 LBS. PER SQ. YD. IN EACH OF TWO LAYERS
T1	SHOULDER RECONSTRUCTION.
T2	SHOULDER CONSTRUCTION.
V1	MILLING 1.5" DEPTH
V2	PROFILE MILLING 0" TO 1.5"
R1	EXISTING 2'-6" CURB & GUTTER

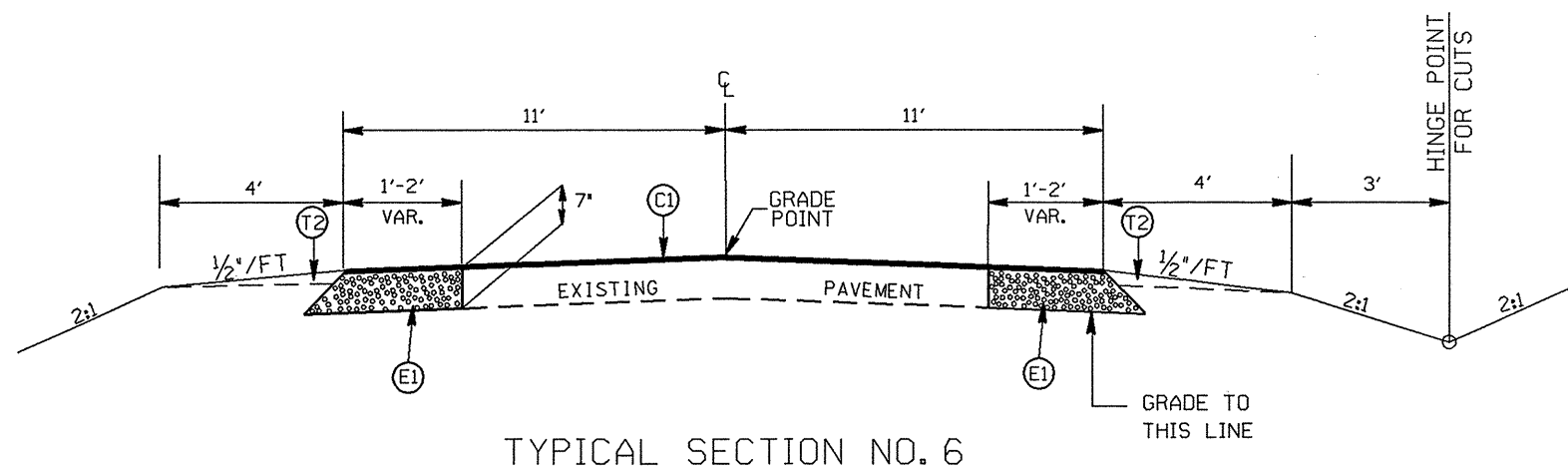
2009 MECKLENBURG COUNTY
RESURFACING

SCALE	-NA-
DATE	11/08
DWG. BY	TWB
DESIGN BY	TWB
APPROVED	LW

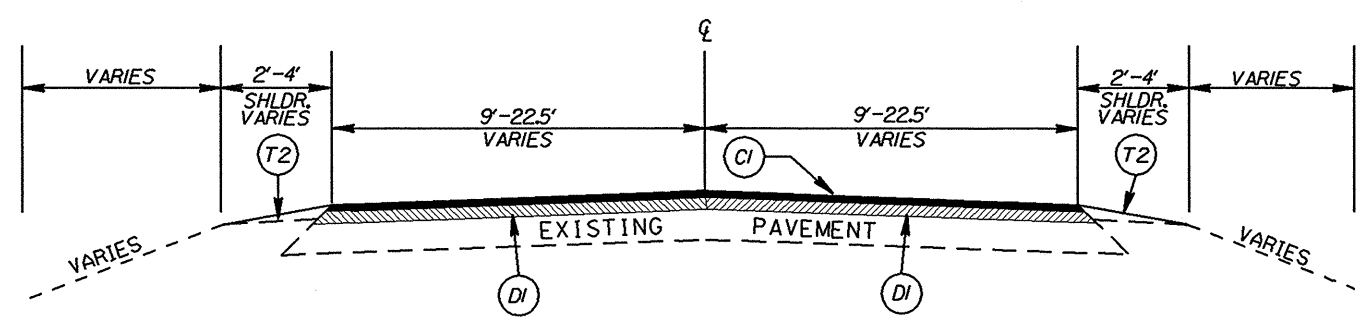


REVISIONS	

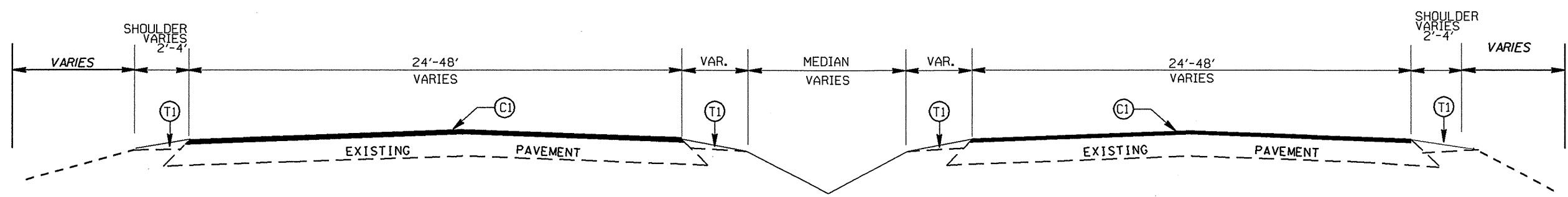
STATE	PROJECT NO.	SHEET NO.	TOTAL SHEETS
N.C.		7	11
WBS : IOCR.I0601.30, etc.			



TYPICAL SECTION NO. 6



TYPICAL SECTION NO. 5



TYPICAL SECTION NO. 4

PAVEMENT SCHEDULE	
C1	PROP. APPROX. 1.5" ASPHALT CONCRETE SURFACE COURSE, TYPE S9.5C, AT AN AVERAGE RATE OF 168 LBS. PER SQ. YD.
D1	PROP. APPROX. 2.5" ASPHALT CONCRETE INTERMEDIATE COURSE, TYPE I19.0C AT AN AVERAGE RATE OF 285 LBS. PER SQ. YD. IN EACH OF TWO LAYERS
E1	PROP. APPROX. 5.5" ASPHALT CONCRETE BASE COURSE, TYPE B25.0C, AT AN AVERAGE RATE OF 627 LBS. PER SQ. YD. IN EACH OF TWO LAYERS
T1	SHOULDER RECONSTRUCTION.
T2	SHOULDER CONSTRUCTION.
V1	MILLING 1.5" DEPTH
V2	PROFILE MILLING 0" TO 1.5"
R1	EXISTING 2'-6" CURB & GUTTER

2009 MECKLENBURG COUNTY
RESURFACING

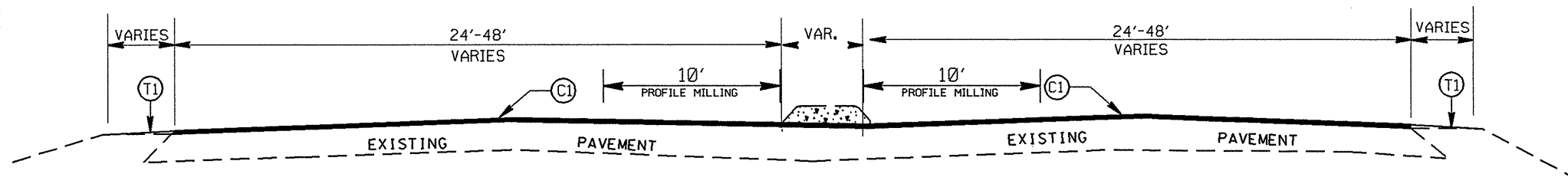
SCALE	-NA-
DATE	11/08
DWG. BY	TWB
DESIGN BY	TWB
APPROVED	LM



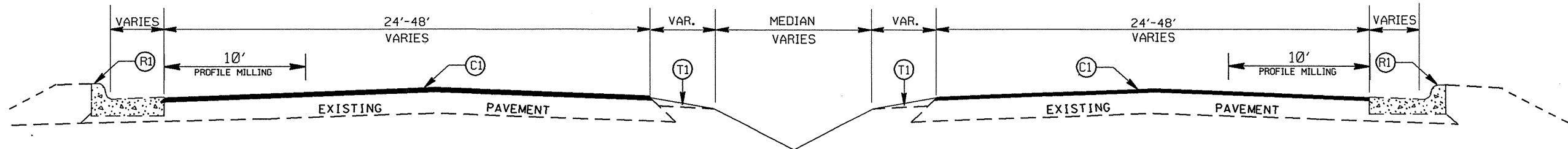
REVISIONS

STATE	PROJECT NO.	SHEET NO.	TOTAL SHEETS
N.C.		8	11
WBS: IOCR, IO601, 30, etc			

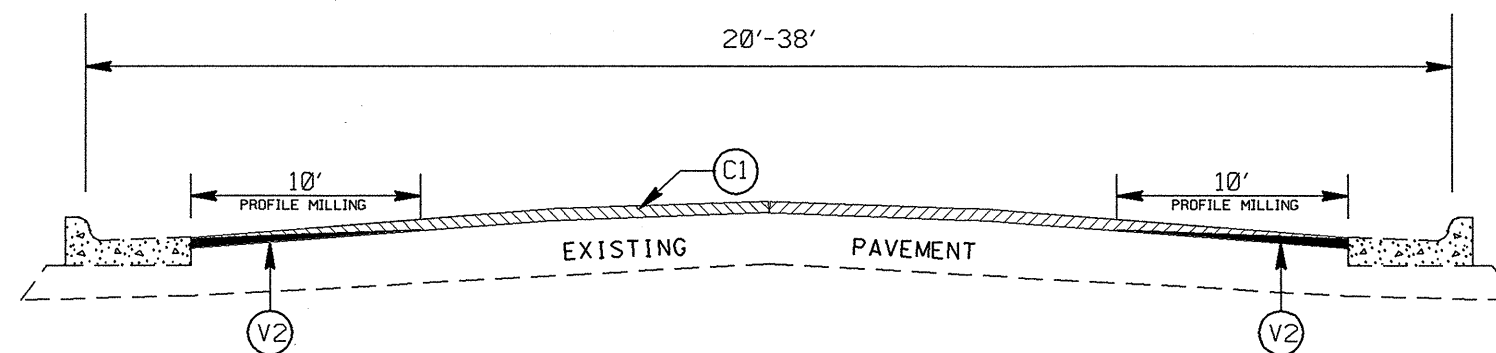
PAVEMENT SCHEDULE	
C1	PROP. APPROX. 1.5" ASPHALT CONCRETE SURFACE COURSE, TYPE S9.5C, AT AN AVERAGE RATE OF 168 LBS. PER SQ. YD.
D1	PROP. APPROX. 2.5" ASPHALT CONCRETE INTERMEDIATE COURSE, TYPE I19.0C AT AN AVERAGE RATE OF 285 LBS. PER SQ. YD. IN EACH OF TWO LAYERS
E1	PROP. APPROX. 5.5" ASPHALT CONCRETE BASE COURSE, TYPE B25.0C, AT AN AVERAGE RATE OF 627 LBS. PER SQ. YD. IN EACH OF TWO LAYERS
T1	SHOULDER RECONSTRUCTION.
T2	SHOULDER CONSTRUCTION.
V1	MILLING 1.5" DEPTH
V2	PROFILE MILLING 0" TO 1.5"
R1	EXISTING 2'-6" CURB & GUTTER



TYPICAL SECTION NO. 9



TYPICAL SECTION NO. 8



TYPICAL SECTION NO. 7

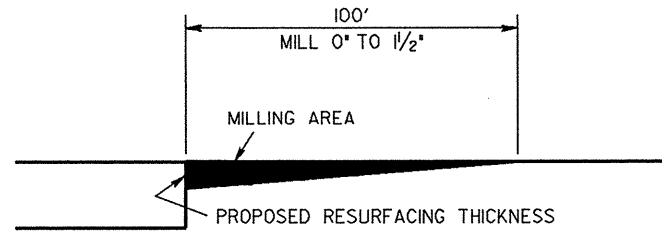
2009 MECKLENBURG COUNTY
RESURFACING

SCALE	-NA-
DATE	11/08
DWG. BY	TWB
DESIGN BY	TWB
APPROVED	LM



REVISIONS

STATE	PROJECT NO.	SHEET NO.	TOTAL SHEETS
N.C.		9	11
WBS: IOCR1060130, etc.			



2006 ROADWAY ENGLISH STANDARD DRAWINGS

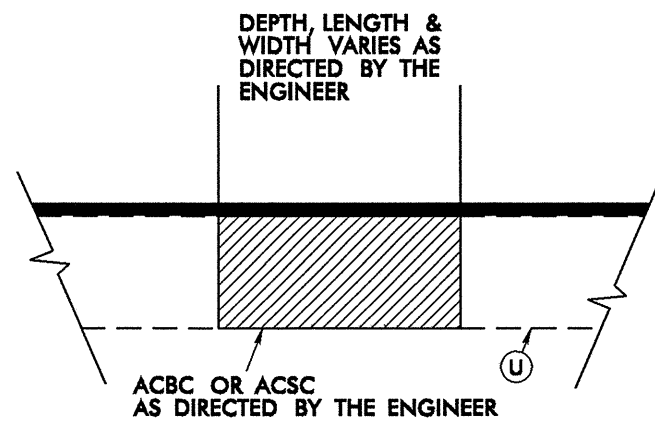
The following Roadway Standards as appear in "Roadway Standard Drawings" Highway Design Branch - N. C. Department of Transportation - Raleigh, N. C., Dated July 18, 2006 are applicable to this project and by reference hereby are considered a part of these plans:

STD. NO.	TITLE
DIVISION 8 - INCIDENTALS	
848.02	Driveway Turnout - Radius Type
848.03	Driveway Turnout - Drop Curb Type
848.06	Wheelchair Ramp - Retrofitting of Existing Curb

EFF: 07-18-06
REV: 01-02-07

MILLING DETAIL AT BRIDGE APPROACHES

COST OF MILLING IS INCIDENTAL TO OTHER ITEMS



PATCHING DETAIL

PATCH EXISTING ASPHALT PAVEMENT

PAVEMENT SCHEDULE	
C1	PROP. APPROX. 1.5" ASPHALT CONCRETE SURFACE COURSE, TYPE S9.5C, AT AN AVERAGE RATE OF 168 LBS. PER SQ. YD.
D1	PROP. APPROX. 2.5" ASPHALT CONCRETE INTERMEDIATE COURSE, TYPE I19.0C, AT AN AVERAGE RATE OF 285 LBS. PER SQ. YD. IN EACH OF TWO LAYERS
E1	PROP. APPROX. 5.5" ASPHALT CONCRETE BASE COURSE, TYPE B25.0C, AT AN AVERAGE RATE OF 627 LBS. PER SQ. YD. IN EACH OF TWO LAYERS
T1	SHOULDER RECONSTRUCTION.
T2	SHOULDER CONSTRUCTION.
V1	MILLING 1.5" DEPTH
V2	PROFILE MILLING 0" TO 1.5"
R1	EXISTING 2'-6" CURB & GUTTER

2009 MECKLENBURG COUNTY
RESURFACING

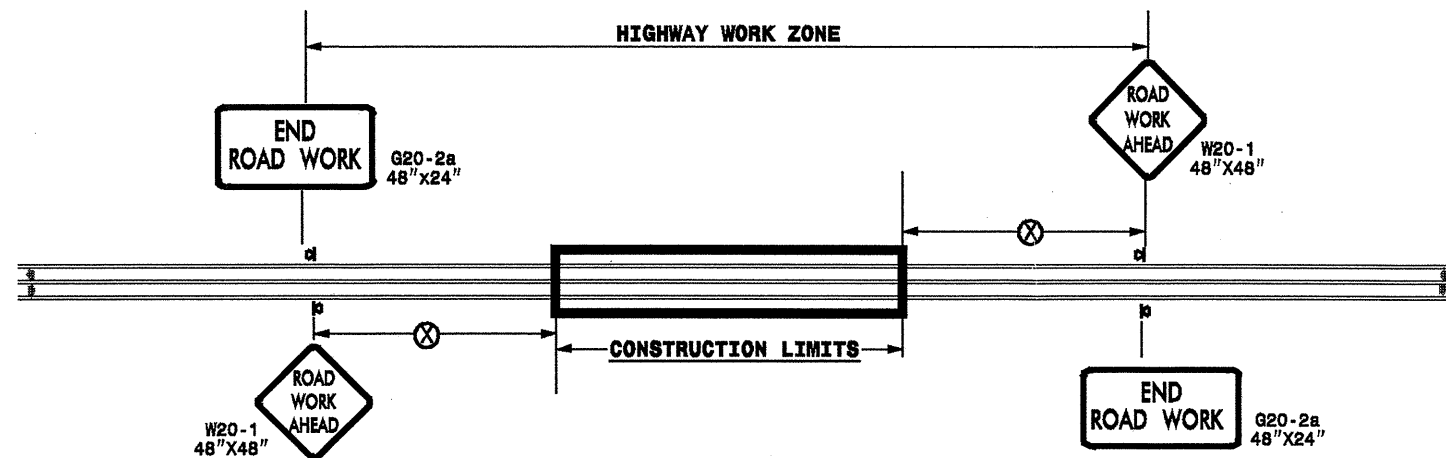
SCALE	-NA-		REVISIONS
DATE	11/08		
DWG. BY	TWB		
DESIGN BY	TWB		
APPROVED	LM		

PROJECT NO.	SHEET NO.	TOTAL NO.
10CR.20601.67, 10CR.20601.69 10CR.20601.70, ETC.	10	11

SUMMARY OF QUANTITIES

PROJECT NO	COUNTY	MAP NO	ROUTE	DESCRIPTION	FINAL SURFACE TESTING	TYP	LENGTH MI	WIDTH FT	INCIDENTAL STONE BASE TONS	SHOULDER CONSTR. SMI	SHOULDER RECONSTR. SMI	1 1/2" MILLING SY	0" TO 1.5" MILLING SY	INCIDENTAL MILLING SY	BASE COURSE, B25.0C TONS	INTERMEDIATE COURSE, I19.0C TONS	SURFACE COURSE, S9.5C TONS	LEVELING COURSE, S9.5C TONS	PG 64-22 PLANT MIX TONS	PG 70-22 PLANT MIX TONS	PATCHING EXISTING PAVEMENT TONS	RETROFIT EXIST. WHEELCHAIR RAMP EA	WHEELCHAIR RAMPS EA	6" DRIVEWAYS SY	ADJ. OF CATCH BASIN EA	ADJ. OF MANHOLES EA	ADJ. OF METER OR VALVE BOX EA	PORTABLE LIGHTING LS	TEMPORARY SILT FENCE LF	SEED & MULCHING AC
10CR.20601.67	Mecklenburg	1	WOODLAWN (SR 3814)	FROM PVT JT E. OF SOUTH BLVD TO PARK RD	NO	1	1.42	55				45,819					4,243			255	825					3	3	*		
			TOTAL FOR PROJ NO. 10CR.20601.67				1.42					45,819					4,243			255	825					3	3			
10CR.20601.69	Mecklenburg	2	SUGAR CREEK RD (SR 2975/2974)	FROM APPROX. 550' SOUTH OF US 29 N. TRYON TO EASTWAY DR. (SR 2940)	NO	1,2	1.44	55				46,464					4,107			246	1,000				1	20	15			
			TOTAL FOR PROJ NO. 10CR.20601.69				1.44					46,464					4,107			246	1,000				1	20	15			
10CR.20601.70	Mecklenburg	3	BROWN-GRIER RD (SR 1143)	FROM ARROWOOD DRIVE TO STEELE CREEK RD (NC 160)	NO	3	1	28	20		1.8			800			1,525	750		140	750					7	5		300.00	0.3
			TOTAL FOR PROJ NO. 10CR.20601.70				1		20		1.8			800			1,525	750		140	750					7	5		300.00	0.3
10CR.10601.30	Mecklenburg	4	UNIVERSITY BLVD (NC 49)	500' EAST OF SHOPPING CENTER TO PVT JT AT HARRIS TEETER DRIVEWAY	NO	4,8	0.87	85	50		1.95		8,000	1,500			3,650	870		276	870					10	6	*	500.00	1.0
			TOTAL FOR PROJ NO. 10CR.10601.30				0.87		50		1.95		8,000	1,500			3,650	870		276	870					10	6		500.00	1.0
10CR.20601.71	Mecklenburg	5	E. ROCKY RIVER (SR 2420)	FROM CABARRUS COUNTY LINE TO DAVIDSON-CONCORD RD (SR 2448)	NO	3,6	2.69	24		5.2	0.15			275	1,711		3,518	1,000	74	276	1,000					1	1		500.00	2.7
			TOTAL FOR PROJ NO. 10CR.20601.71				2.69			5.2	0.15			275	1,711		3,518	1,000	74	276	1,000					1	1		500.00	2.7
10CR.20601.68	Mecklenburg	6	DAVIDSON-CONCORD RD (SR 2693)	FROM NC 115 TO E. ROCKY RIVER (SR 2420)	NO	1,3	1.95	30			3.85	34,320					3,184			191	945					22	18	*		
			TOTAL FOR PROJ NO. 10CR.20601.68				1.95				3.85	34,320					3,184			191	945					22	18			
10CR.20601.72	Mecklenburg	7	WESTMORLAND RD (SR 2147)	FROM W. CATAWBA (SR 5544) TO US 21	NO	3	1	23			1.8			800			1,140	650		111	650								300.00	0.8
			TOTAL FOR PROJ NO. 10CR.20601.72				1				1.8			800			1,140	650		111	650								300.00	0.8
10CR.20601.73	Mecklenburg	8	JOHN KIRK (SR 2833)	FROM UNIVERSITY BLVD (NC 49) TO MALLARD CREEK CHURCH RD (SR 5394)	NO	3,7	0.71	40			1.22	1,500	225				1,474	540		124	540					4	5		200.00	0.5
			TOTAL FOR PROJ NO. 10CR.20601.73				0.71				1.22	1,500	225				1,474	540		124	540					4	5		200.00	0.5
10CR.20601.60	Mecklenburg	9	REAMES RD (SR 2483)	FROM OLD STATESVILLE RD (NC 115) TO HARRIS BLVD (NC 24)	NO	5	1.16	28	100	2.32					2,736	1,608			129	96	630			300				500.00	1.2	
			TOTAL FOR PROJ NO. 10CR.20601.60				1.16		100	2.32					2,736	1,608			129	96	630			300				500.00	1.2	
10CR.20601.75	Mecklenburg	10	CALDWELL RD (SR 2801)	FROM CABARRUS COUNTY LINE TO BACK CREEK CHURCH RD	NO	3,6	0.68	24		1.36					525		808	525	23	83	525								300.00	
			TOTAL FOR PROJ NO. 10CR.20601.75				0.68			1.36					525		808	525	23	83	525								300.00	
10CR.20601.76	Mecklenburg	11	NORTH POLK ST (SR 4982)	FROM PINEVILLE-MATTHEWS RD (NC 51) TO CONCRETE BRIDGE DECK AT I-485	NO	1,2	1.16	60				41,000					3,609			217	800	11	2			6	9		500.00	
			TOTAL FOR PROJ NO. 10CR.20601.76				1.16					41,000					3,609			217	800	11	2			6	9		500.00	
10CR.10601.31	Mecklenburg	12	BROOKSHIRE BLVD (NC 16)	FROM CONCRETE BRIDGE DECK ON I-85 TO CONCRETE PVT JT ON BROOKSHIRE BLVD (NC 16)	NO	2,9	0.77	83			1.8	10,000	1,000				3,312	420		226	575	2				4	6		500.00	1.1
			TOTAL FOR PROJ NO. 10CR.10601.31				0.77				1.8	10,000	1,000				3,312	420		226	575	2				4	6		500.00	1.1
10CR.20601.64	Mecklenburg	13	REA RD (SR 3624)	FROM PVT JT. 2000' E OF COLONY DRIVE TO OLD PROVIDENCE RD	NO	1,3	1.3	44			0.8	33,557	200				2,968			178	750					15	5	*	200.00	0.4
			TOTAL FOR PROJ NO. 10CR.20601.64				1.3				0.8	33,557	200				2,968			178	750					15	5		200.00	0.4
GRAND TOTAL							16.15		170	8.88	13.37	201,160	19,500	4,800	2,236	2,736	35,146	4,755	226	2,419	9,860	13	2	300	1	92	73	1	3,800.00	8.0

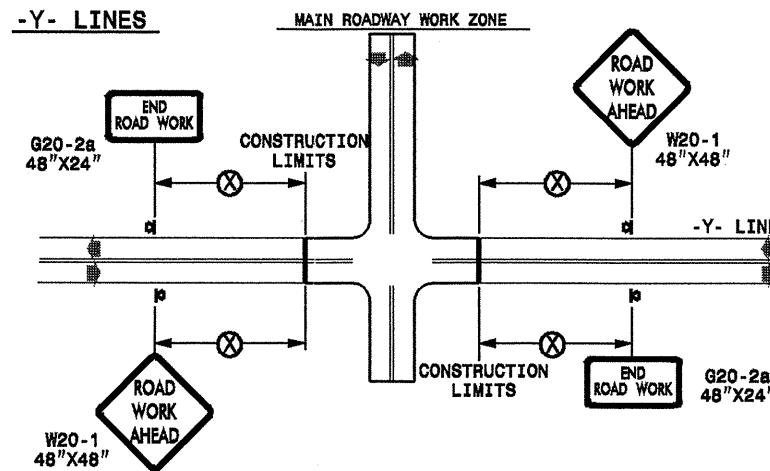
TWO-WAY UNDIVIDED ** (L-LINES)



POSTED SPEED LIMIT (M.P.H.)	RECOMMENDED MINIMUM SIGN SPACING
≤ 50	500'
≥ 55	1000'

STATE OF NORTH CAROLINA
DEPT. OF TRANSPORTATION
DIVISION OF HIGHWAYS
RALEIGH, N.C.

ROADWAYS INTERSECTING ALONG 2 WAY UNDIVIDED WORK ZONE (Y-LINES)



DETAIL DRAWING
FOR TWO-WAY UNDIVIDED
WORK ZONE WARNING SIGNS

GENERAL NOTES

- USE FLUORESCENT ORANGE SHEETING (TYPE VII OR HIGHER) ON ALL ADVANCE WORK ZONE SIGNS.
- DO NOT INSTALL ADVANCE WARNING SIGNS MORE THAN 3 DAYS PRIOR TO BEGINNING OF WORK.
- ALL SIGN SPACING DIMENSIONS ARE APPROXIMATE, FIELD ADJUST AS NECESSARY OR AS DIRECTED.
- USE PORTABLE WORK ZONE SIGNS ONLY WITH PORTABLE WORK ZONE SIGN STANDS SPECIFICALLY DESIGNED FOR ONE ANOTHER. PORTABLE WORK ZONE SIGNS MAY BE ROLL UP OR APPROVED COMPOSITE.
- PROVIDE PORTABLE WORK ZONE SIGN STANDS, PORTABLE SIGNS AND SIGN SHEETING WHICH ARE LISTED ON THE NORTH CAROLINA DEPARTMENT OF TRANSPORTATION'S APPROVED PRODUCT LIST OR ACCEPTED AS TRAFFIC QUALIFIED BY THE TRAFFIC CONTROL UNIT.
- ** TWO-WAY UNDIVIDED ADVANCE WARNING SIGN CONFIGURATION MAY BE USED ON URBAN MULTI-LANE FACILITIES WHERE CONDITIONS LIMIT THE USE OF DUAL MOUNTED SIGNS AS DETERMINED BY THE ENGINEER.

LEGEND

- ◀ PORTABLE SIGN
- ➔ DIRECTION OF TRAFFIC FLOW

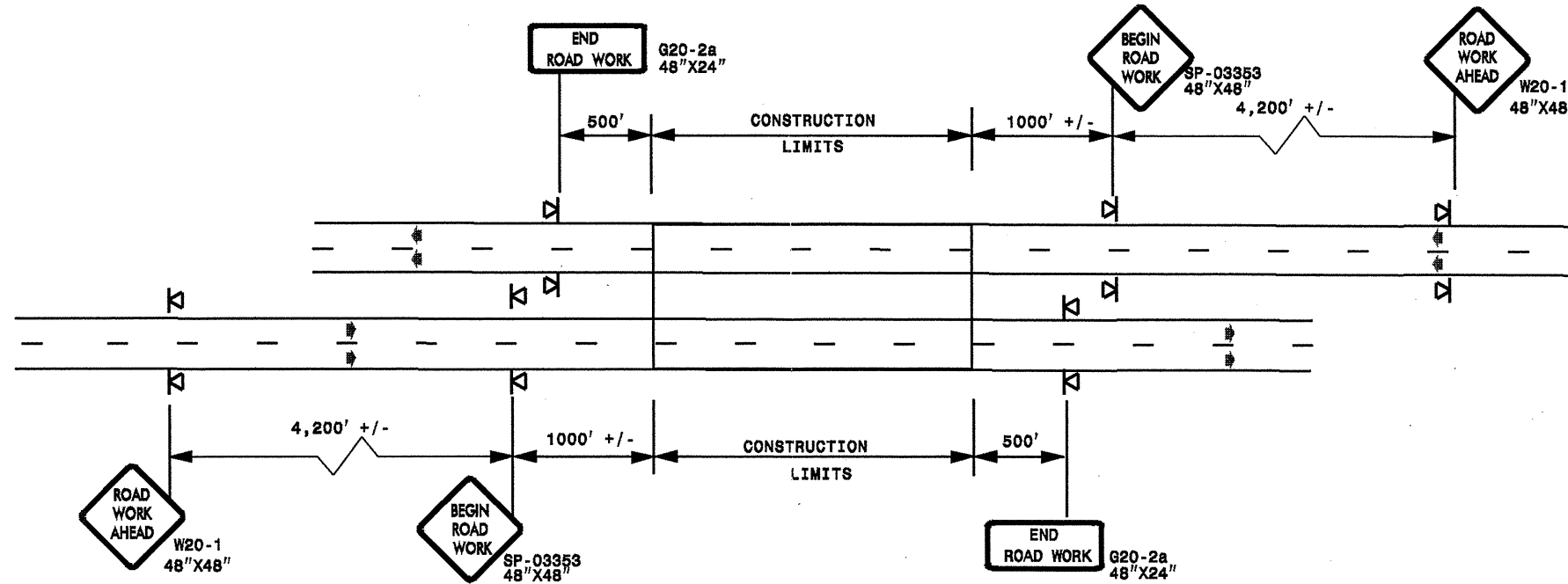
SHEET 1 OF 1

APPROVED: _____	DATE: _____	DETAIL DRAWING FOR TWO-WAY UNDIVIDED ADVANCED WORK ZONE WARNING SIGNS	
SEAL	SCALE: NONE	REVISIONS	
	DATE: _____	7-98	10/01
	DWG. BY: _____	10-98	03/04
	DESIGN BY: _____	01/01	11/04
REVIEWED BY: _____	CHD RLS		

20-NOV-2009 20:30
sta signing v resurfacing2010\div0\c202519a-1\0cr106013x12_2wayundivurb frwys\july2006-porttable.dgn
P0271019 AT 12:23:50Z

ADVANCE WORK ZONE WARNING SIGNING FOR FREEWAYS (4 LANES OR GREATER)

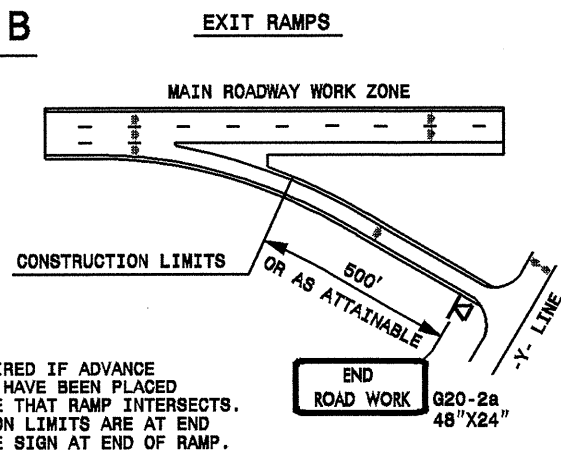
DETAIL A



STATE OF NORTH CAROLINA
DEPT. OF TRANSPORTATION
DIVISION OF HIGHWAYS
RALEIGH, N.C.

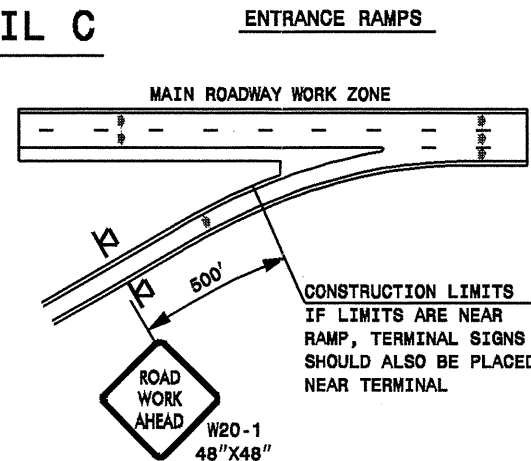
ROADWAYS INTERSECTING ALONG FREEWAY WORK ZONE (Y-LINES)

DETAIL B



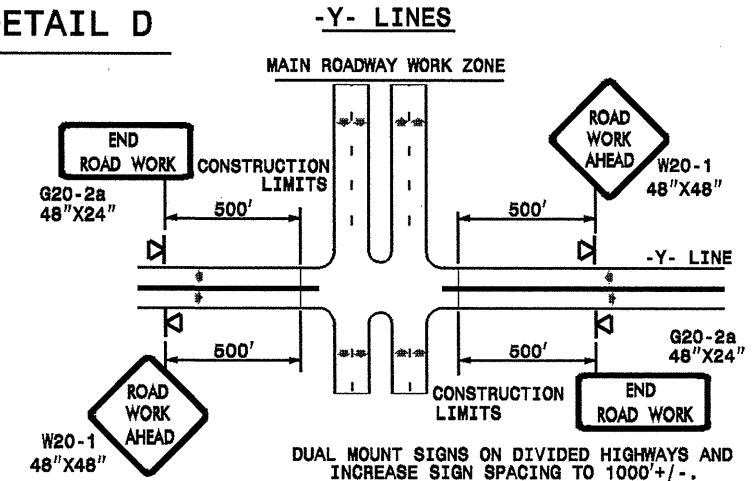
NOTE:
SIGN NOT REQUIRED IF ADVANCE WARNING SIGNS HAVE BEEN PLACED ALONG -Y- LINE THAT RAMP INTERSECTS. IF CONSTRUCTION LIMITS ARE AT END OF RAMP, PLACE SIGN AT END OF RAMP.

DETAIL C



CONSTRUCTION LIMITS IF LIMITS ARE NEAR RAMP, TERMINAL SIGNS SHOULD ALSO BE PLACED NEAR TERMINAL.

DETAIL D



DUAL MOUNT SIGNS ON DIVIDED HIGHWAYS AND INCREASE SIGN SPACING TO 1000' +/-.

DETAIL DRAWING
FOR FREEWAYS
WORK ZONE WARNING SIGNS
(SHORT-DURATION LANE CLOSURES)

GENERAL NOTES

- USE FLUORESCENT ORANGE SHEETING (TYPE VII OR HIGHER) ON ALL ADVANCE WORK ZONE SIGNS.
- DO NOT INSTALL ADVANCE WARNING SIGNS MORE THAN 3 DAYS PRIOR TO BEGINNING OF WORK.
- ALL SIGN SPACING DIMENSIONS ARE APPROXIMATE, FIELD ADJUST AS NECESSARY OR AS DIRECTED.
- USE PORTABLE WORK ZONE SIGNS ONLY WITH PORTABLE WORK ZONE SIGN STANDS SPECIFICALLY DESIGNED FOR ONE ANOTHER. PORTABLE WORK ZONE SIGNS MAY BE ROLL UP OR APPROVED COMPOSITE.
- PROVIDE PORTABLE WORK ZONE SIGN STANDS, PORTABLE SIGNS AND SIGN SHEETING WHICH ARE LISTED ON THE NORTH CAROLINA DEPARTMENT OF TRANSPORTATION'S APPROVED PRODUCT LIST OR ACCEPTED AS TRAFFIC QUALIFIED BY THE TRAFFIC CONTROL UNIT.
- ** TWO-WAY UNDIVIDED ADVANCE WARNING SIGN CONFIGURATION MAY BE USED ON MULTI-LANE FACILITIES WHERE CONDITIONS LIMIT THE USE OF DUAL MOUNTED SIGNS AS DETERMINED BY THE ENGINEER.

LEGEND

- PORTABLE SIGN
- DIRECTION OF TRAFFIC FLOW

SHEET 1 OF 1

APPROVED: _____	DATE: _____	DETAIL DRAWING FOR FREEWAYS WORK ZONE WARNING SIGNS	
SEAL			
SCALE: NONE	REVISIONS		
DATE: _____	7-98 10/01		
DWG. BY: _____	10-98 03/04		
DESIGN BY: _____	01/01 11/04		
REVIEWED BY: _____	CADD FILE		

20-NOV-2009 20:34 030509\resurfacing200\div10\c202519c-1\0cr106013x12.mckenburg.nc49m2\c202519a-1\0cr106013x12_freewayesgreet.july2006.por\table.dgn