

STATE OF NORTH CAROLINA
DIVISION OF HIGHWAYS

STATE PROJECT REFERENCE NO. B-3869 SHEET NO. TCP-1

**PLAN FOR PROPOSED
TRAFFIC CONTROL, MARKING & DELINEATION
MADISON COUNTY**

B-3869

ROADWAY STANDARD DRAWINGS

THE FOLLOWING ROADWAY STANDARDS AS APPEAR IN "ROADWAY STANDARD DRAWINGS"- PROJECT SERVICES UNIT-N.C. DEPARTMENT OF TRANSPORTATION-RALEIGH, N.C., DATED JULY 18, 2006 ARE APPLICABLE TO THIS PROJECT AND BY REFERENCE HEREBY ARE CONSIDERED A PART OF THESE PLANS:

STD. NO.	TITLE
1101.02	TEMPORARY LANE CLOSURES
1101.04	TEMPORARY SHOULDER CLOSURES
1101.05	WORK ZONE VEHICLE ACCESSES
1101.11	TRAFFIC CONTROL DESIGN TABLES
1110.01	STATIONARY WORK ZONE SIGNS
1110.02	PORTABLE WORK ZONE SIGNS
1130.01	DRUMS
1135.01	CONES
1145.01	BARRICADES
1150.01	FLAGGING DEVICES
1180.01	SKINNY DRUMS
1205.01	PAVEMENT MARKINGS - LINE TYPES & OFFSETS
1205.02	PAVEMENT MARKINGS - 2 LANE & MULTILANE ROADWAYS
1205.04	PAVEMENT MARKINGS - INTERSECTIONS
1205.12	PAVEMENT MARKINGS - BRIDGES
1250.01	PAVEMENT MARKER SPACING
1251.01	RAISED PAVEMENT MARKERS- TEMPORARY AND PERMANENT
1261.01	GUARDRAIL & BARRIER DELINEATOR SPACING
1261.02	GUARDRAIL & BARRIER DELINEATOR TYPES
1262.01	GUARDRAIL END DELINEATION

INDEX OF SHEETS

SHEET NO.	TITLE
TCP-1	LIST OF APPLICABLE ROADWAY STANDARD DRAWINGS, TEMPORARY PAVEMENT MARKING SCHEDULE, LEGEND, AND INDEX OF SHEETS
TCP-2	PROJECT NOTES
TCP-3	PHASING
TCP-4	PHASE I DETAIL
TCP-5	PHASE II DETAIL
TCP-5A	PHASE II CUT SECTIONS
TCP-6	PHASE III DETAIL AND FINAL PAVEMENT MARKING SCHEDULE

LEGEND

- GENERAL**
- DIRECTION OF TRAFFIC FLOW
 - NORTH ARROW
 - PROPOSED PVMT. EXIST. PVMT.
 - WORK AREA
 - REMOVAL OF EXISTING PAVEMENT

TRAFFIC CONTROL DEVICES

- TYPE I BARRICADE
- TYPE II BARRICADE
- TYPE III BARRICADE
- CONE
- DRUM
- FLASHING ARROW PANEL (TYPE C)
- TYPE 'B' WARNING LIGHT
- STATIONARY SIGN
- PORTABLE SIGN
- STATIONARY OR PORTABLE SIGN
- WARNING FLAGS
- CRASH CUSHION
- CHANGEABLE MESSAGE SIGN
- TRUCK MOUNTED IMPACT ATTENUATOR (TMIA)
- POLICE
- FLAGGER

PAVEMENT MARKINGS

- CRYSTAL/CRYSTAL PAVEMENT MARKER
- YELLOW/YELLOW PAVEMENT MARKER
- CRYSTAL/RED PAVEMENT MARKER
- PAVEMENT MARKING SYMBOLS

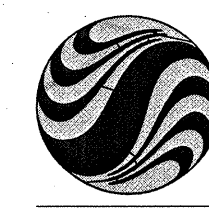
TEMPORARY PAVEMENT MARKING SCHEDULE

SYMBOL	DESCRIPTION	PAY ITEM/ QUANTITY BREAKDOWN	TOTAL QUANTITY
PAVEMENT MARKING LINES PAINT (4")			
PA	WHITE EDGE LINE (2X)	2200 LF	
PD	2 FT. WHITE MINISKIP (2X)	28 LF	
PI	YELLOW DOUBLE CENTER (2X)	1300 LF	
			TOTAL = 3528 LF
TEMPORARY RAISED PAVEMENT MARKERS			
ML	CRYSTAL & CRYSTAL	25 EA	
			TOTAL = 25 EA

NOTE: FOR EACH PAINT PAVEMENT MARKING APPLICATION, 1X IMPLIES A SINGLE APPLICATION, 2X IMPLIES A DOUBLE APPLICATION, AND 3X IMPLIES THREE APPLICATIONS.

PLACE PA (WHITE EDGE LINE) ALONG BOTH EDGES OF NEW PAVEMENT ACCORDING TO RSD 1205.01 AND TIE TO EXISTING EDGE LINES. (SEE SHEET TCP-5).

TIP PROJECT:



Stantec Consulting Services Inc.
801 Jones Franklin Road, Suite 300
Raleigh, NC 27606
Tel: 919.851.6866
Fax: 919.851.7024
www.stantec.com

APPROVED: *Betsy L. Watson*
DATE: *February 12, 2009*

SEAL



PLAN PREPARED BY: **Stantec Consulting** 801 Jones Franklin Road, Suite 300 Raleigh, NC 27606 Tel. 919.851.6866

TROY A. PEOPLES, PE TRAFFIC CONTROL ENGINEER
BESY L. WATSON, PE TRAFFIC CONTROL PROJECT ENGINEER
JOHN L. HENNEKES TRAFFIC CONTROL DESIGNER

GENERAL NOTES

CHANGES MAY BE REQUIRED WHEN PHYSICAL DIMENSIONS IN THE DETAIL DRAWINGS, STANDARD DETAILS AND ROADWAY DETAILS ARE NOT ATTAINABLE TO MEET FIELD CONDITIONS, OR RESULT IN DUPLICATE, OR UNDESIRABLE OVERLAPPING OF DEVICES. MODIFICATION MAY INCLUDE: MOVING, SUPPLEMENTING, COVERING OR REMOVAL OF DEVICES, AS DIRECTED BY THE ENGINEER.

THE FOLLOWING GENERAL NOTES APPLY AT ALL TIMES FOR THE DURATION OF THE CONSTRUCTION PROJECT, EXCEPT WHEN OTHERWISE NOTED IN THE PLAN, OR DIRECTED BY THE ENGINEER.

TIME RESTRICTIONS

A) DO NOT CONDUCT ANY WORK AS FOLLOWS:

ROAD NAME	DAY AND TIME RESTRICTIONS
ALL ROADS	SUNDAY 8:00 AM TO 2:00 PM

LANE AND SHOULDER CLOSURE REQUIREMENTS

- B) REMOVE LANE CLOSURE DEVICES FROM THE LANE WHEN WORK IS NOT BEING PERFORMED BEHIND THE LANE CLOSURE OR WHEN A LANE CLOSURE IS NO LONGER NEEDED, OR AS DIRECTED BY THE ENGINEER.
- C) WHEN PERSONNEL AND/OR EQUIPMENT ARE WORKING WITHIN 15 FT OF AN OPEN TRAVEL LANE, CLOSE THE NEAREST OPEN SHOULDER USING ROADWAY STANDARD DRAWING NO. 1101.04 UNLESS THE WORK AREA IS PROTECTED BY BARRIER OR GUARDRAIL OR A LANE CLOSURE IS INSTALLED.
- D) WHEN PERSONNEL AND/OR EQUIPMENT ARE WORKING ON THE SHOULDER ADJACENT TO AN UNDIVIDED FACILITY AND WITHIN 5 FT OF AN OPEN TRAVEL LANE, CLOSE THE NEAREST OPEN TRAVEL LANE USING ROADWAY STANDARD DRAWING NO. 1101.02 UNLESS THE WORK AREA IS PROTECTED BY BARRIER OR GUARDRAIL.
- E) WHEN PERSONNEL AND/OR EQUIPMENT ARE WORKING WITHIN A LANE OF TRAVEL OF AN UNDIVIDED OR DIVIDED FACILITY, CLOSE THE LANE ACCORDING TO THE TRAFFIC CONTROL PLANS, ROADWAY STANDARD DRAWINGS OR AS DIRECTED BY THE ENGINEER. CONDUCT THE WORK SO THAT ALL PERSONNEL AND/OR EQUIPMENT REMAIN WITHIN THE CLOSED TRAVEL LANE.
- F) DO NOT WORK SIMULTANEOUSLY WITHIN 15 FT ON BOTH SIDES OF AN OPEN TRAVELWAY, RAMP, OR LOOP WITHIN THE SAME LOCATION UNLESS PROTECTED WITH GUARDRAIL OR BARRIER.

PAVEMENT EDGE DROP OFF REQUIREMENTS

- G) BACKFILL AT A 6:1 SLOPE UP TO THE EDGE AND ELEVATION OF EXISTING PAVEMENT IN AREAS ADJACENT TO AN OPENED TRAVEL LANE THAT HAS AN EDGE OF PAVEMENT DROP-OFF AS FOLLOWS:
- BACKFILL DROP-OFFS THAT EXCEED 2 INCHES ON ROADWAYS WITH POSTED SPEED LIMITS OF 45 MPH OR GREATER.
- BACKFILL DROP-OFFS THAT EXCEED 3 INCHES ON ROADWAYS WITH POSTED SPEED LIMITS LESS THAN 45 MPH.
- BACKFILL WITH SUITABLE COMPACTED MATERIAL, AS APPROVED BY THE ENGINEER, AT NO EXPENSE TO THE DEPARTMENT.
- H) DO NOT EXCEED A DIFFERENCE OF 2 INCHES IN ELEVATION BETWEEN OPEN LANES OF TRAFFIC FOR NOMINAL LIFTS OF 1.5 INCHES. INSTALL ADVANCE WARNING "UNEVEN LANES" SIGNS (W8-11) IN ADVANCE AND A MINIMUM OF EVERY HALF MILE THROUGHOUT THE UNEVEN AREA.

TRAFFIC PATTERN ALTERATIONS

- I) NOTIFY THE ENGINEER TWENTY ONE (21) CALENDAR DAYS PRIOR TO ANY TRAFFIC PATTERN ALTERATION.

SIGNING

- J) INSTALL ADVANCE WORK ZONE WARNING SIGNS WHEN WORK IS WITHIN 40 FT FROM THE EDGE OF TRAVEL LANE AND NO MORE THAN THREE (3) DAYS PRIOR TO THE BEGINNING OF CONSTRUCTION.
- K) STATE FORCES WILL BE RESPONSIBLE FOR PERMANENT SIGNING.
- L) ENSURE ALL NECESSARY SIGNING IS IN PLACE PRIOR TO ALTERING ANY TRAFFIC PATTERN.
- M) INSTALL BLACK ON ORANGE "DIP" SIGNS (W8-2) AND/OR "BUMP" SIGNS (W8-1) IN ADVANCE OF THE UNEVEN AREA, OR AS DIRECTED BY THE ENGINEER.

TRAFFIC CONTROL DEVICES

- N) SPACE CHANNELIZING DEVICES IN WORK AREAS NO GREATER THAN TWICE THE POSTED SPEED LIMIT (MPH), EXCEPT 10 FT ON-CENTER IN RADII, AND 3 FT OFF THE EDGE OF AN OPEN TRAVELWAY, WHEN LANE CLOSURES ARE NOT IN EFFECT. WHEN SKINNY DRUMS ARE ALLOWED, REFER TO SECTION 1180 OF STANDARD SPECIFICATIONS FOR ROADS AND STRUCTURES OR AS SHOWN IN THE PLANS.
- O) PLACE TYPE III BARRICADES, WITH "ROAD CLOSED" SIGN R11-2 ATTACHED, OF SUFFICIENT LENGTH TO CLOSE ENTIRE ROADWAY.

PAVEMENT MARKINGS AND MARKERS

- P) INSTALL PAVEMENT MARKINGS AND PAVEMENT MARKERS ON THE FINAL SURFACE AS FOLLOWS:

ROAD NAME	MARKING	MARKER
BIG PINE ROAD	PAINT	NONE
SOUTH FORK ROAD	PAINT	NONE

- Q) INSTALL TEMPORARY PAVEMENT MARKINGS AND TEMPORARY PAVEMENT MARKERS ON INTERIM LAYERS OF PAVEMENT AS FOLLOWS:

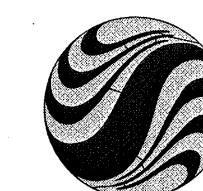
ROAD NAME	MARKING	MARKER
BIG PINE ROAD	PAINT	NONE
SOUTH FORK ROAD	PAINT	NONE
TEMP DETOUR STRUCTURE	PAINT	CRYSTAL/ CRYSTAL

- R) PLACE TWO APPLICATIONS OF PAINT PAVEMENT MARKINGS ON THE FINAL WEARING SURFACE. PLACE THE SECOND APPLICATION OF PAINT UPON SUFFICIENT DRYING TIME OF THE FIRST.
- S) PLACE ONE APPLICATION OF PAINT FOR TEMPORARY TRAFFIC PATTERNS. PLACE A SECOND APPLICATION OF PAINT SIX (6) MONTHS AFTER THE INITIAL APPLICATION AND EVERY SIX MONTHS AS DIRECTED BY THE ENGINEER.
- T) TIE PROPOSED PAVEMENT MARKING LINES TO EXISTING PAVEMENT MARKING LINES.
- U) REMOVE/REPLACE ANY CONFLICTING/DAMAGED PAVEMENT MARKINGS AND MARKERS BY THE END OF EACH DAY'S OPERATION.

GENERAL NOTES FOR ADVANCE WORK ZONE WARNING SIGNS

- USE FLUORESCENT ORANGE SHEETING (TYPE VII OR HIGHER) ON ALL ADVANCE WORK ZONE SIGNS.
- DO NOT INSTALL ADVANCE WARNING SIGNS MORE THAN 3 DAYS PRIOR TO BEGINNING OF WORK.
- ALL SIGN SPACING DIMENSIONS AS SHOWN ON SHEET TCP-4 ARE APPROXIMATE; FIELD ADJUST AS NECESSARY OR AS DIRECTED.
- USE 3LB STEEL U-CHANNEL POST OR 4" X 4" WOOD POST FOR ALL WORK ZONE SIGNS. 3LB STEEL U-CHANNEL POSTS MUST MEET THE REQUIREMENTS OF STANDARD SPECIFICATION SECTION 1094-1(B), MAY BE GALVANIZED STEEL, OR MAY BE PAINTED GREEN BY THE POST MANUFACTURER. SQUARE STEEL TUBING POSTS HAVING EQUIVALENT STRENGTH OF THE 3 LB STEEL U-CHANNEL POST ARE ALSO ACCEPTABLE FOR USE. ERECT SIGNS PER ROADWAY STANDARD DRAWING 1110.01. PAYMENT FOR WOOD POSTS, 3LB STEEL U-CHANNEL AND SQUARE STEEL TUBING POSTS WITH SIGNS WILL BE MADE ACCORDING TO STANDARD SPECIFICATION "WORK ZONE SIGNS" SECTION 1110.
- WHEN NECESSARY, USE SPLICING IN ACCORDANCE WITH ROADWAY STANDARD DRAWING NO. 1110.01. REMOVE ENTIRE POST WHEN REMOVING SIGNS WITH SPLICED POSTS.
- DO NOT BACK BRACE SIGN SUPPORTS.

8/13/2009
U:\TrafficControl\TrafficControl\TCP\B3869_tcp_02.dgn
gkarageorge



Stantec
Stantec Consulting Services Inc.
801 Jones Franklin Road, Suite 300
Raleigh, NC
27606
Tel. 919.851.6866
Fax. 919.851.7024
www.stantec.com

APPROVED: <i>Betsy L. Watson</i> DATE: 8/3/09		PROJECT NOTES	
SEAL 	SCALE: NONE		REVISIONS
	DATE: OCT. 2008		
	DESIGN BY: JLH		
	REVIEWED BY: BLW		
CADD FILE: ...TCP\B3869_tcp_02.dgn			

PROJECT PHASING

PHASE I

FOR THE WORK REQUIRED IN PHASE I, MAINTAIN TRAFFIC ON EXISTING SR 1151 (BIG PINE ROAD) AND SR 1158 (SOUTH FORK ROAD) IN ITS CURRENT TWO-LANE, TWO-WAY PATTERN. USE RSD 1101.02, SHEET 1 OF 9, AS NECESSARY FOR STEPS 1 THROUGH 6. RETURN TRAFFIC TO TWO-LANE, TWO-WAY PATTERN ON EXISTING ROADWAYS AT THE END OF EACH WORK PERIOD.

- STEP 1: INSTALL WORK ZONE ADVANCE WARNING SIGNS ON SR 1151 (BIG PINE ROAD), SR 1158 (SOUTH FORK ROAD), AND SR 1159 (NORTH FORK ROAD) AS SHOWN ON SHEET TCP-4.
- STEP 2: CONSTRUCT THE TEMPORARY ON-SITE DETOUR ALIGNMENT AS SHOWN ON SHEET TCP-4. THIS WORK INCLUDES THE FOLLOWING:
- CONSTRUCTION OF -DETOUR- STA. 10+10 TO 10+58, EXCLUDING TIE-IN BETWEEN -DETOUR- AND -L-
 - CONSTRUCTION OF THE TEMPORARY STRUCTURE: -DETOUR- STA. 10+58 TO 11+13
 - CONSTRUCTION OF -DETOUR- STA. 11+13 TO 11+47, EXCLUDING TIE-IN BETWEEN -DETOUR- AND -Y-
 - INSTALLATION OF GUARDRAIL ON THE LEFT SIDE OF -DETOUR- STA. 10+20 TO 10+60
- WORK IN A CONTINUOUS MANNER TO COMPLETE STEPS 3 THROUGH 6.
- STEP 3: COMPLETE TIE-INS BETWEEN -DETOUR- AND -L-, AND -DETOUR- AND -Y-, AS SHOWN ON SHEET TCP-4.
- STEP 4: REMOVE CONFLICTING PAVEMENT MARKINGS AND PLACE TEMPORARY PAVEMENT MARKINGS ON -Y- AND -L-. PLACE TEMPORARY RAISED CRYSTAL/ CRYSTAL MARKERS ON THE TEMPORARY DETOUR, AS SHOWN ON SHEET TCP-5.
- STEP 5: SHIFT TRAFFIC ONTO TEMPORARY ON-SITE DETOUR ALIGNMENT, AS SHOWN ON SHEET TCP-5.
- STEP 6: INSTALL GUARDRAIL ON RIGHT SIDE OF -DETOUR- FROM STA. 10+41 -L- TO 10+55 -DETOUR-, AS SHOWN ON SHEET TCP-5. COMPLETE ANY OTHER REMAINING WORK ON THE RIGHT SIDE OF -DETOUR-.

PHASE II

FOR THE WORK REQUIRED IN PHASE II, USE RSD 1101.02, SHEET 1 OF 9, AS NECESSARY. AT THE END OF EACH WORK PERIOD, RETURN TRAFFIC TO THE TEMPORARY PATTERN SHOWN IN TRAFFIC CONTROL PLANS FOR PHASE II: TWO-LANE, TWO-WAY PATTERN ON BIG PINE ROAD AND SOUTH FORK ROAD, WITH EXCEPTION OF THE BRIDGE, WHERE TRAFFIC IS MAINTAINED ON TEMPORARY STRUCTURE IN ONE-LANE, TWO-WAY PATTERN.

- STEP 1: CONSTRUCT THE FINAL ALIGNMENT, UP TO BUT NOT INCLUDING FINAL SURFACE COURSE, FROM -L- STA. 10+00 TO 11+51 AS SHOWN ON SHEET TCP-5. THIS WORK INCLUDES THE FOLLOWING:
- CONSTRUCTION OF -L- STA. 10+00 TO 10+97, EXCLUDING TIE-IN BETWEEN -L- AND -DETOUR-
 - CONSTRUCTION OF THE FINAL STRUCTURE: -L- STA. 10+97 TO 11+37
 - INSTALLATION OF GUARDRAIL ON THE RIGHT SIDE OF -L- FROM STA. 10+41 TO 10+95
 - CONSTRUCTION OF L- STA. 11+37 TO 11+51, EXCLUDING TIE-IN BETWEEN -L- AND -Y-

WORK IN A CONTINUOUS MANNER TO COMPLETE STEPS 2 THROUGH 5.

- STEP 2: COMPLETE TIE-INS BETWEEN -L- AND -DETOUR-, AND -L- AND -Y-. SEE SHEET TCP-5.
- STEP 3: PLACE TEMPORARY PAVEMENT MARKINGS IN THE FINAL PATTERN ON ALL ROADS AS SHOWN ON SHEET TCP-6.
- STEP 4: SHIFT TRAFFIC ONTO FINAL ALIGNMENT ON THE NEW STRUCTURE. SEE SHEET TCP-6.
- STEP 5: INSTALL GUARDRAIL ON LEFT SIDE OF -L- FROM STA. 10+80 TO 11+00 AND FROM STA. 11+40 -L- (LEFT SIDE) TO 11+30 -Y- (RIGHT SIDE).

PHASE III

FOR THE WORK REQUIRED IN PHASE III, USE RSD 1101.02, SHEET 1 OF 9, AS NECESSARY. AT THE END OF EACH WORK PERIOD, RETURN TRAFFIC TO ITS FINAL PATTERN AS SHOWN ON SHEET TCP-6: TWO-LANE, TWO-WAY PATTERN ON BIG PINE ROAD AND SOUTH FORK ROAD, WITH TRAFFIC ON FINAL STRUCTURE.

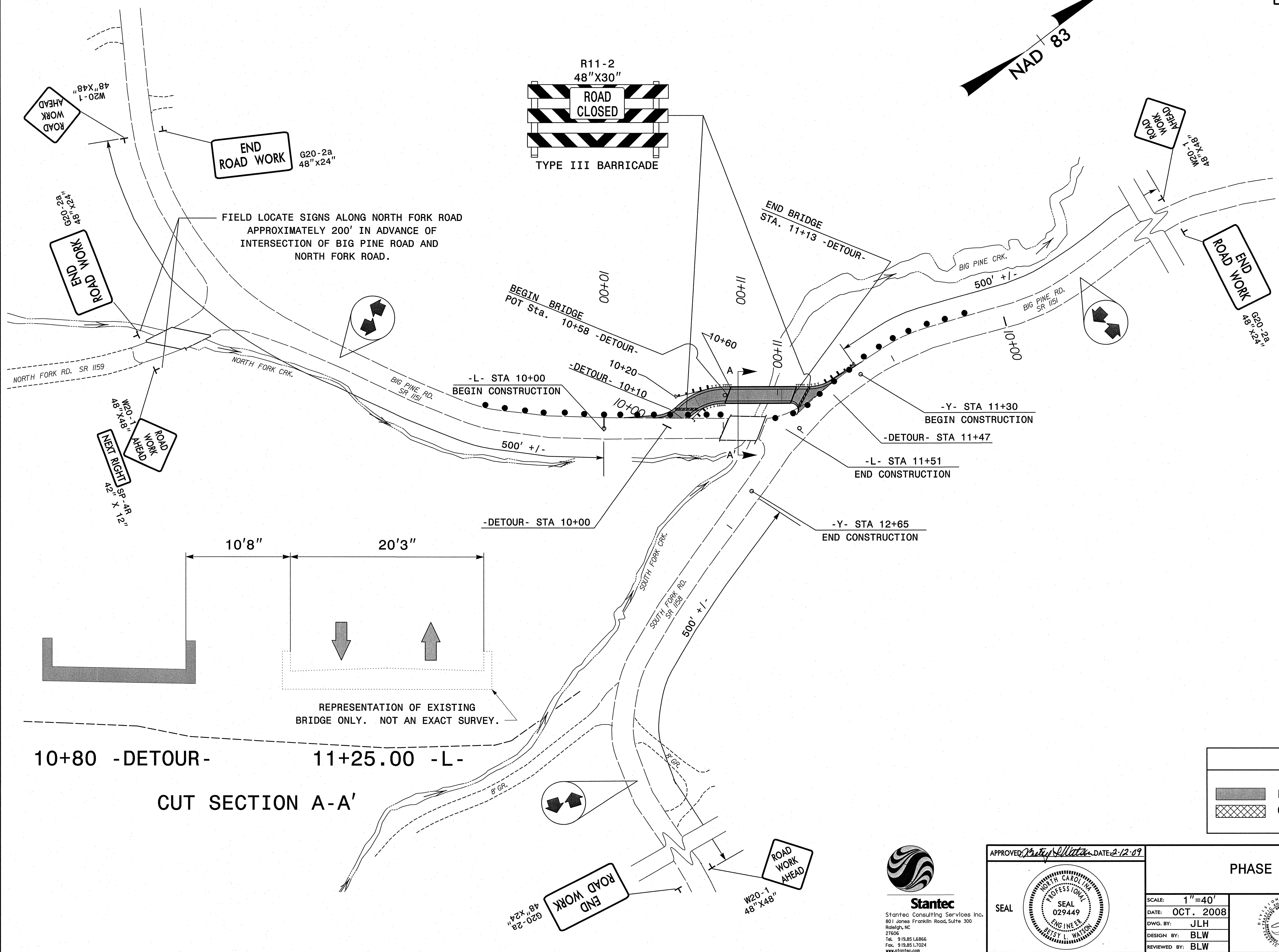
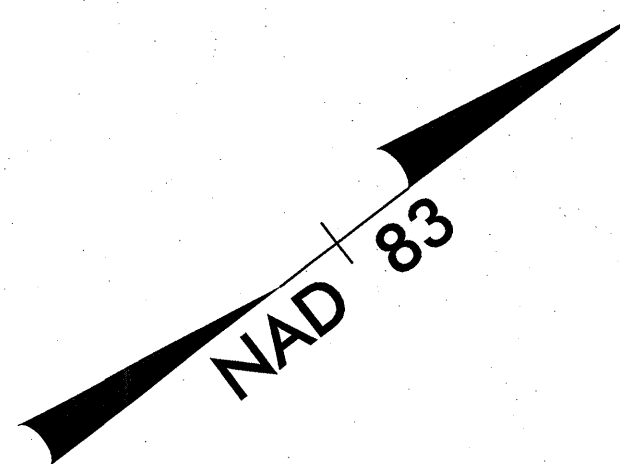
- STEP 1: REMOVE TEMPORARY DETOUR STRUCTURE AND TEMPORARY DETOUR ALIGNMENT AS SHOWN IN ROADWAY PLANS AND ON SHEET TCP-6.
- STEP 2: COMPLETE ANY OTHER REMAINING WORK ON THE LEFT SIDE OF -L-. SEE SHEET TCP-6.
- STEP 3: PLACE FINAL SURFACE COURSE OF ASPHALT ON -L- STA. 10+00 TO 11+51 AND ON -Y- STA. 11+30 TO 12+65. PLACE FINAL PAVEMENT MARKINGS AS SHOWN ON SHEET TCP-6.
- STEP 4: REMOVE ALL REMAINING TRAFFIC CONTROL DEVICES.

2/12/2009
 Us:\Traffic\TrafficControl\top\B3869_tc_tcp_03.dgn
 gkaragorge



Stantec
 Stantec Consulting Services Inc.
 801 Jones Franklin Road, Suite 300
 Raleigh, NC
 27606
 Tel. 919.851.6866
 Fax. 919.851.7024
 www.stantec.com

APPROVED: <i>Billy Watson</i> DATE: <i>2-12-09</i>		PHASING	
	SCALE: NONE		REVISIONS
	DATE: OCT. 2008		
	DWG. BY: JLH		
	DESIGN BY: BLW		
	REVIEWED BY: BLW		
		CADD FILE: ...\\qpl\B3869_tc_tcp_03.dgn	



END ROAD WORK
G20-2a
48" x 24"

R11-2
48" X 30"
ROAD CLOSED
TYPE III BARRICADE

END ROAD WORK
G20-2a
48" X 24"

ROAD WORK AHEAD
W20-1
48" X 48"

ROAD WORK END
G20-2a
48" X 24"

ROAD WORK AHEAD
W20-1
48" X 48"

ROAD WORK AHEAD
W20-1
48" X 48"

NEXT RIGHT
SP-4R
42" X 12"

FIELD LOCATE SIGNS ALONG NORTH FORK ROAD
APPROXIMATELY 200' IN ADVANCE OF
INTERSECTION OF BIG PINE ROAD AND
NORTH FORK ROAD.

BEGIN BRIDGE
POT Sta. 10+58 -DETOUR-

END BRIDGE
Sta. 11+13 -DETOUR-

-L- STA 10+00
BEGIN CONSTRUCTION

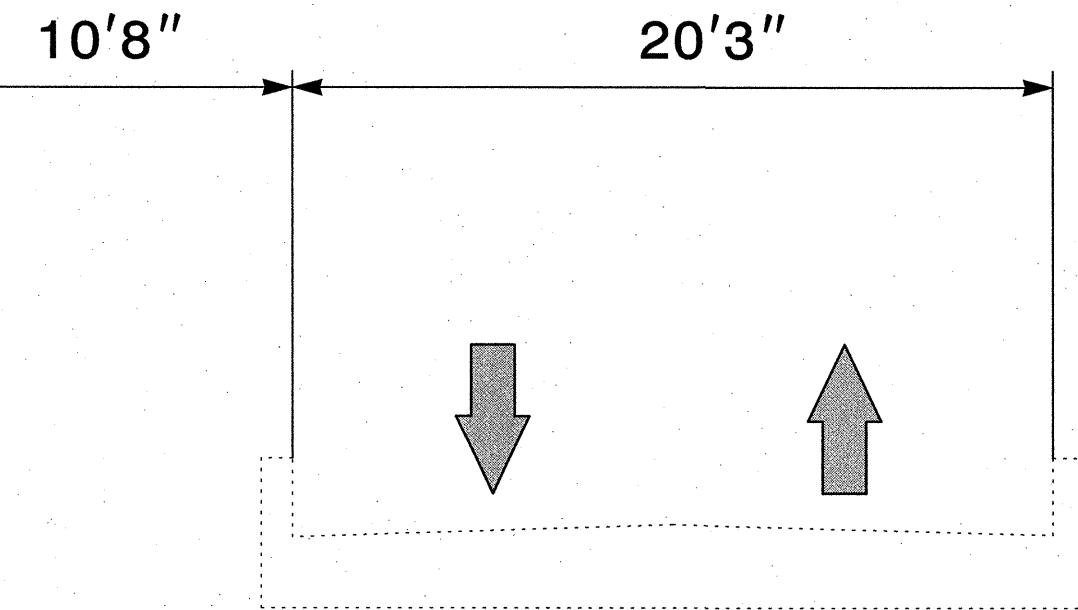
-Y- STA 11+30
BEGIN CONSTRUCTION

-DETOUR- STA 11+47

-L- STA 11+51
END CONSTRUCTION

-Y- STA 12+65
END CONSTRUCTION

-DETOUR- STA 10+00

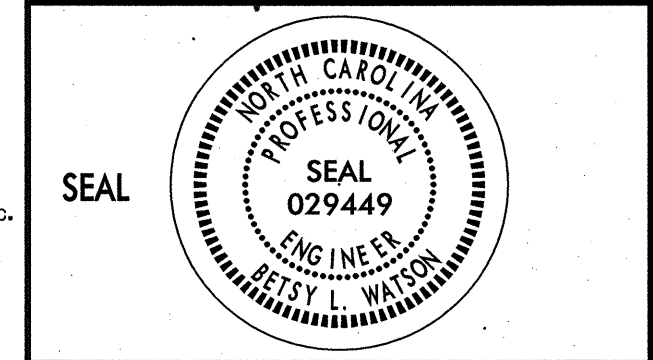


10+80 -DETOUR- 11+25.00 -L-

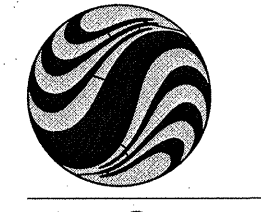
CUT SECTION A-A'

LEGEND	
	PROPOSED PAVEMENT
	OBLITERATE

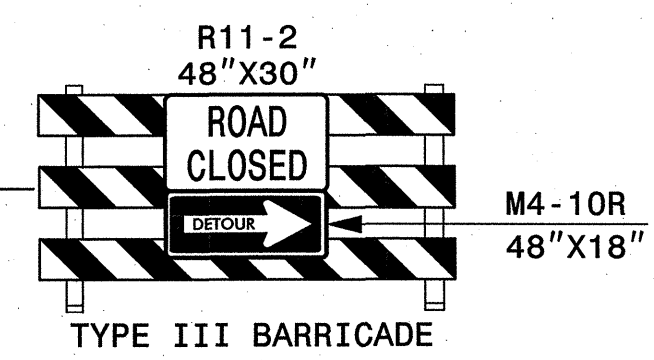
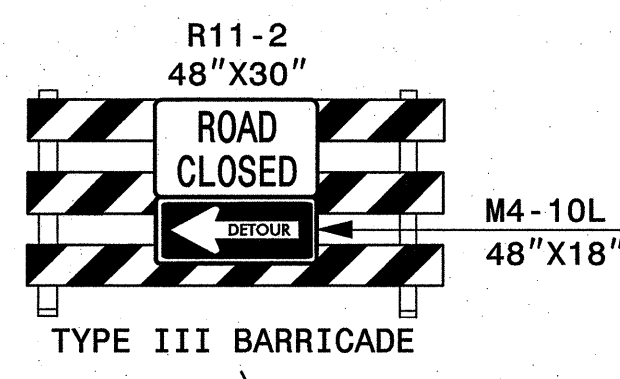
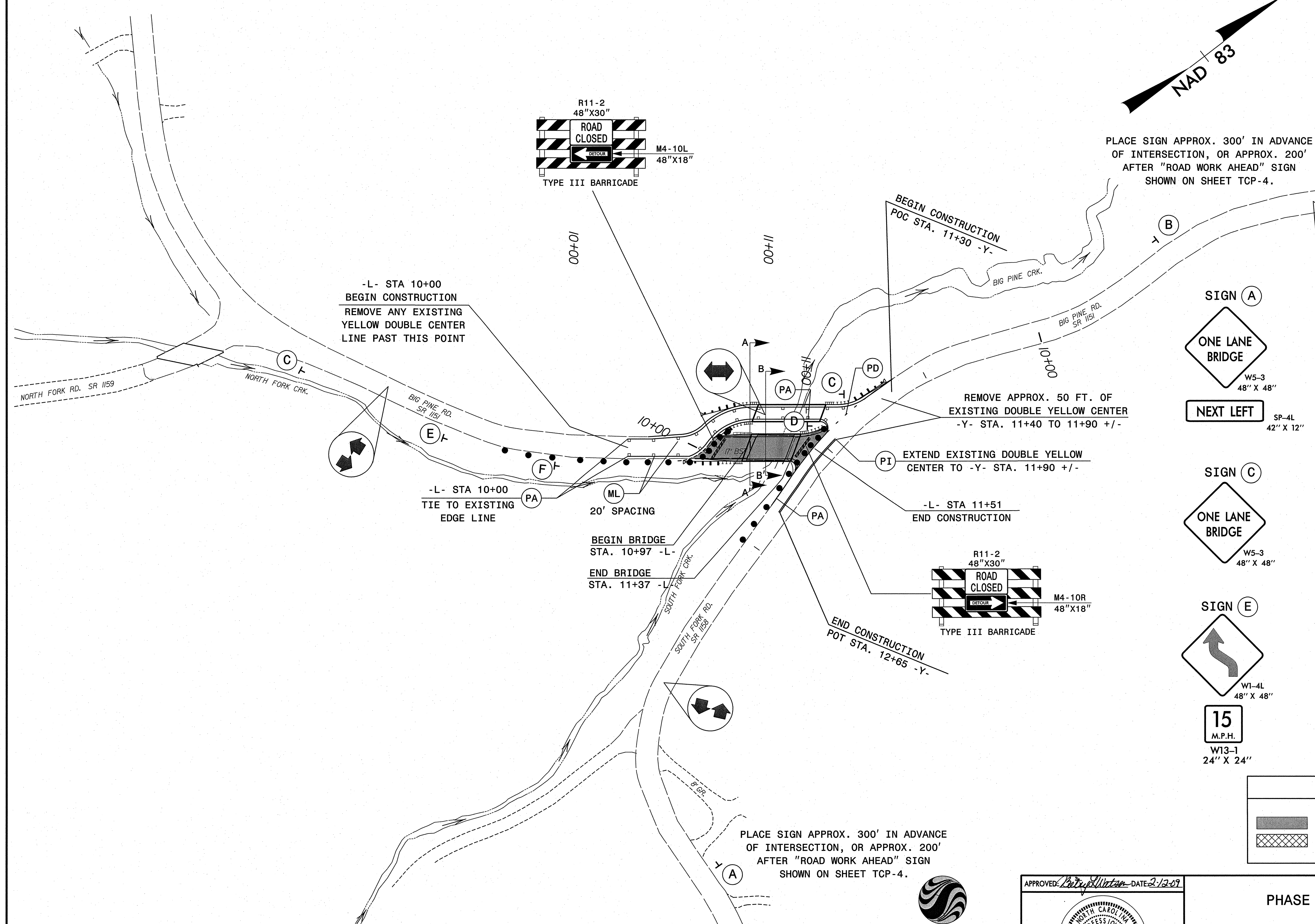
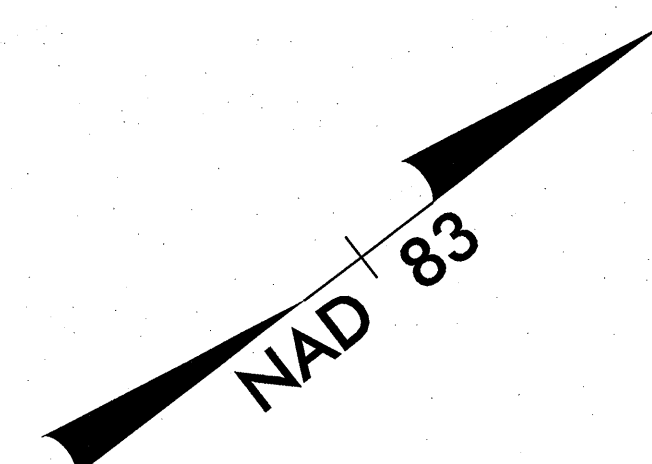
APPROVED: *[Signature]* DATE: 2-12-09



PHASE I DETAIL		REVISIONS
SCALE: 1" = 40'	DATE: OCT. 2008	
DWG. BY: JLH	DESIGN BY: BLW	
REVIEWED BY: BLW		



Stantec
Stantec Consulting Services Inc.
801 Jones Franklin Road, Suite 300
Raleigh, NC
27606
Tel. 919.851.6866
Fax. 919.851.7024
www.stantec.com



PLACE SIGN APPROX. 300' IN ADVANCE OF INTERSECTION, OR APPROX. 200' AFTER "ROAD WORK AHEAD" SIGN SHOWN ON SHEET TCP-4.

-L- STA 10+00
BEGIN CONSTRUCTION
REMOVE ANY EXISTING
YELLOW DOUBLE CENTER
LINE PAST THIS POINT

-L- STA 10+00
TIE TO EXISTING
EDGE LINE

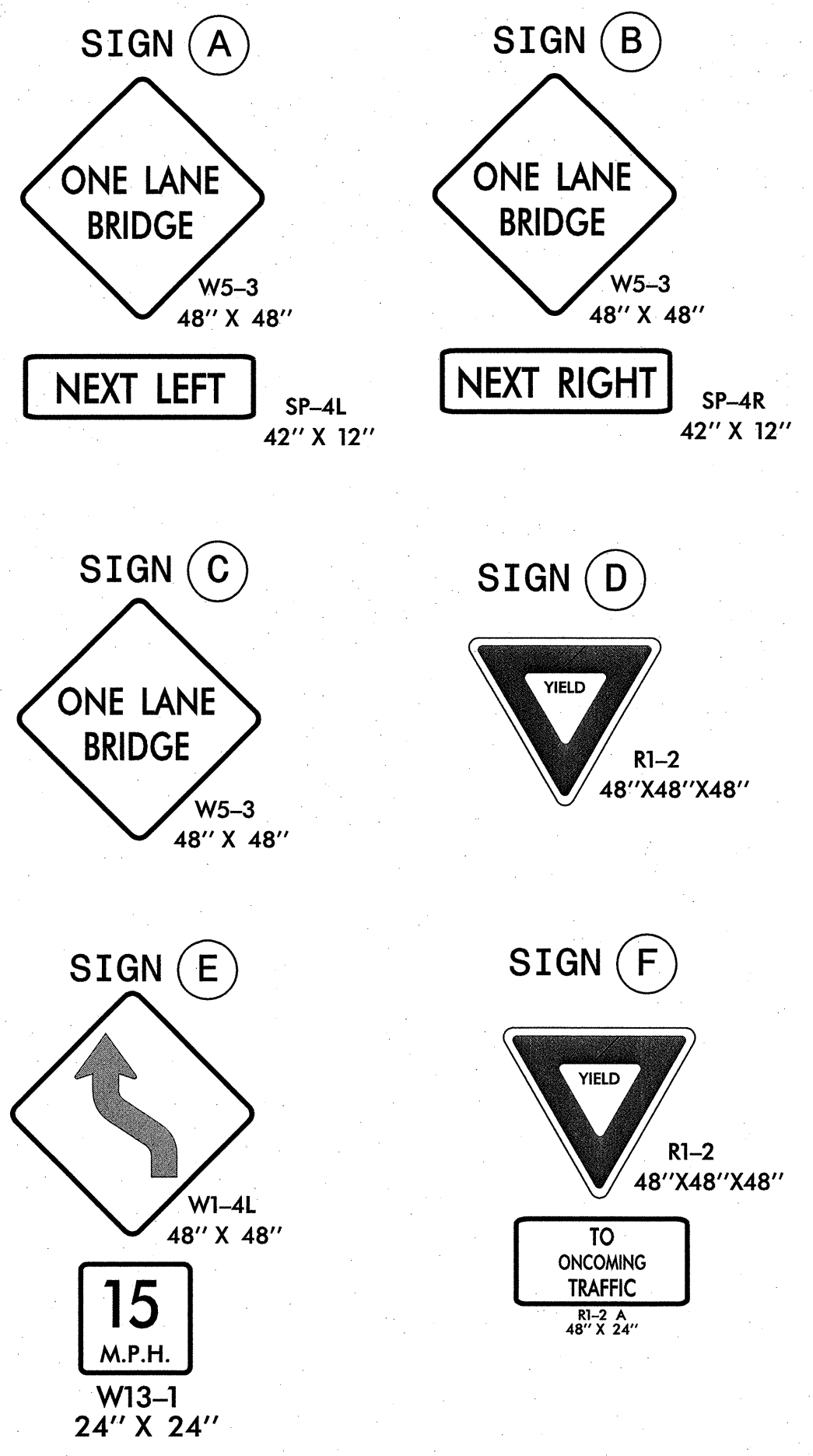
BEGIN BRIDGE
STA. 10+97 -L-
END BRIDGE
STA. 11+37 -L-

REMOVE APPROX. 50 FT. OF
EXISTING DOUBLE YELLOW
CENTER TO -Y- STA. 11+40 TO 11+90 +/-

EXTEND EXISTING DOUBLE YELLOW
CENTER TO -Y- STA. 11+90 +/-

-L- STA 11+51
END CONSTRUCTION

PLACE SIGN APPROX. 300' IN ADVANCE OF INTERSECTION, OR APPROX. 200' AFTER "ROAD WORK AHEAD" SIGN SHOWN ON SHEET TCP-4.



LEGEND	
	PROPOSED PAVEMENT
	OBLITERATE

2/12/2009
Us:\TrafficControl\TCP\B3869-fc_top_05.dgn
gkarageorge

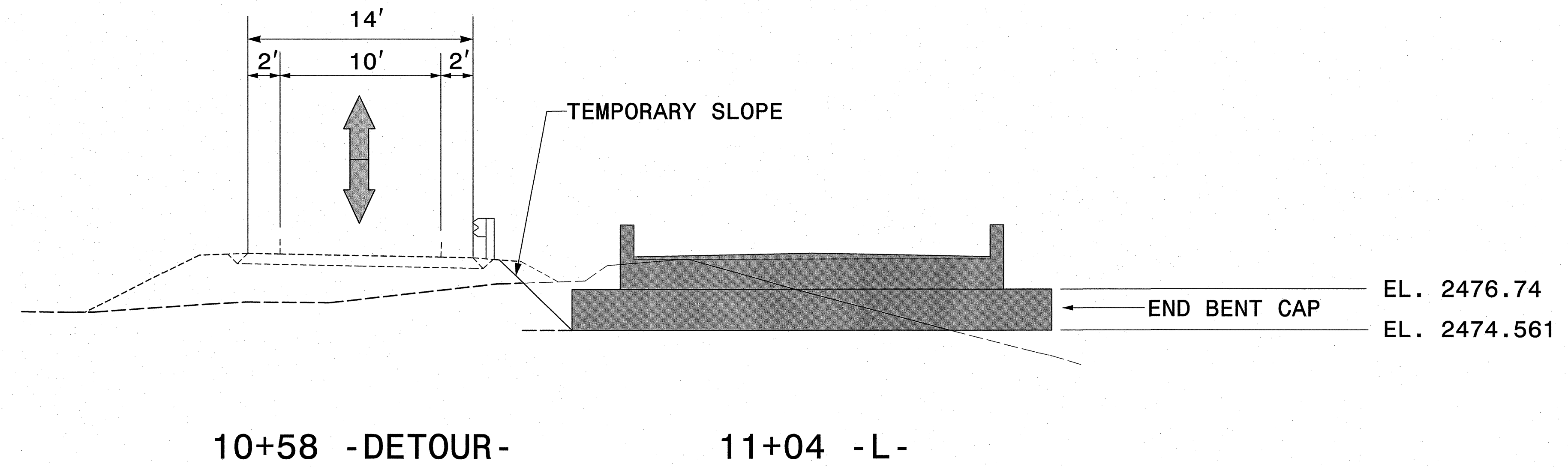
Stantec
Stantec Consulting Services Inc.
801 Jones Franklin Road, Suite 300
Raleigh, NC
27606
Tel: 919.851.6865
Fax: 919.851.7024
www.stantec.com

APPROVED: *Betsy Wilson* DATE: 2-12-09

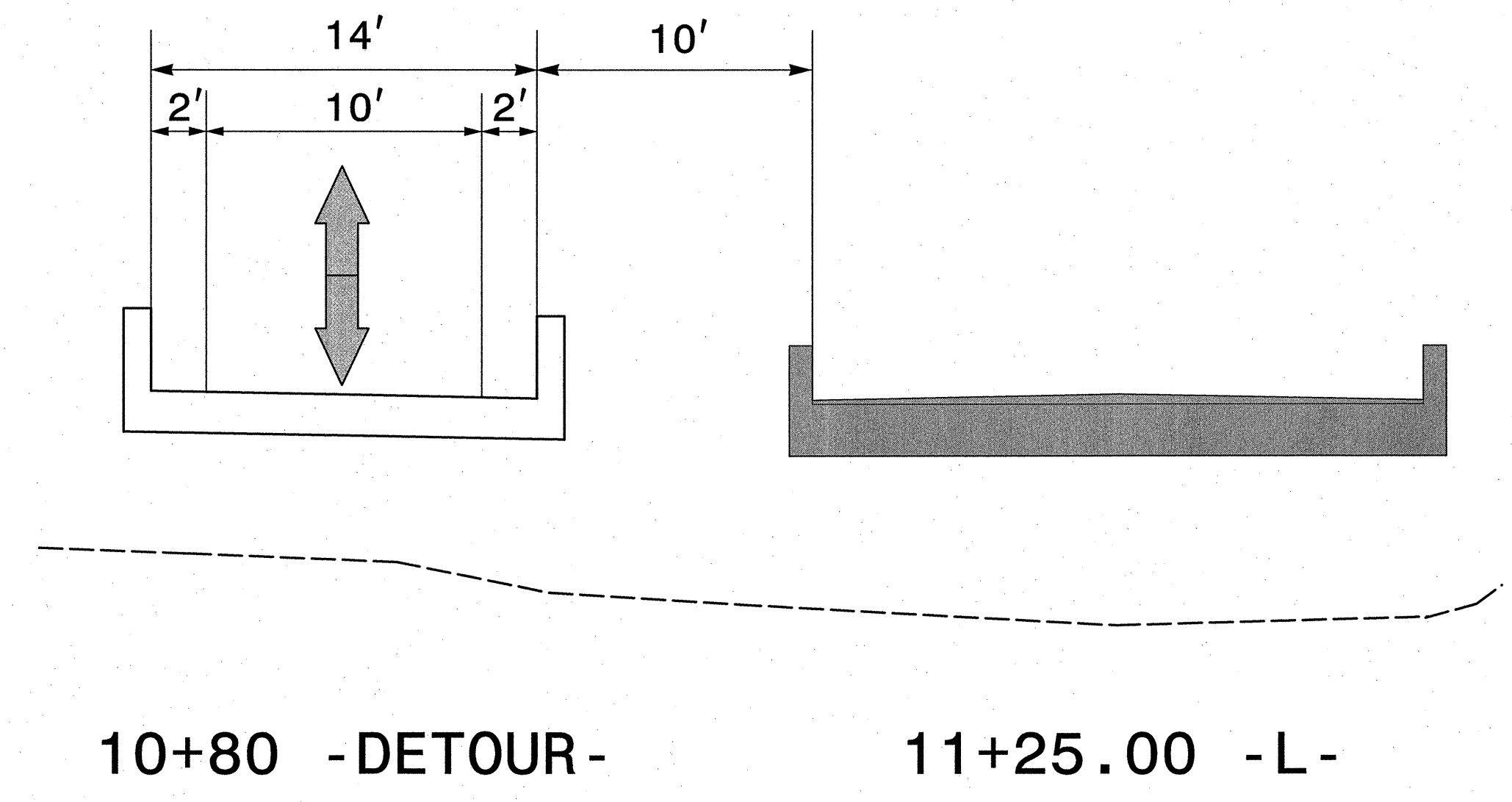
PHASE II DETAIL

SCALE: 1" = 40'		REVISIONS
DATE: OCT. 2008		
DWG. BY: JLH		
DESIGN BY: BLW		
REVIEWED BY: BLW		CADD FILE: \\TCP\B3869-fc_top_05.dgn

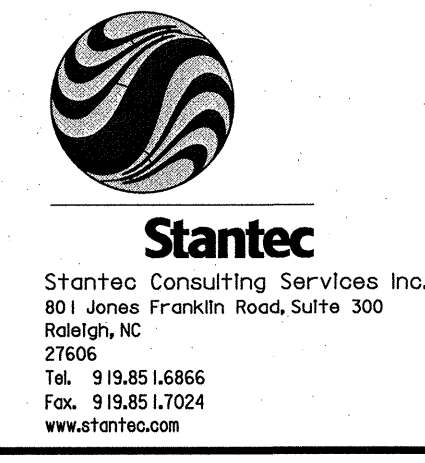
CUT SECTION A-A'



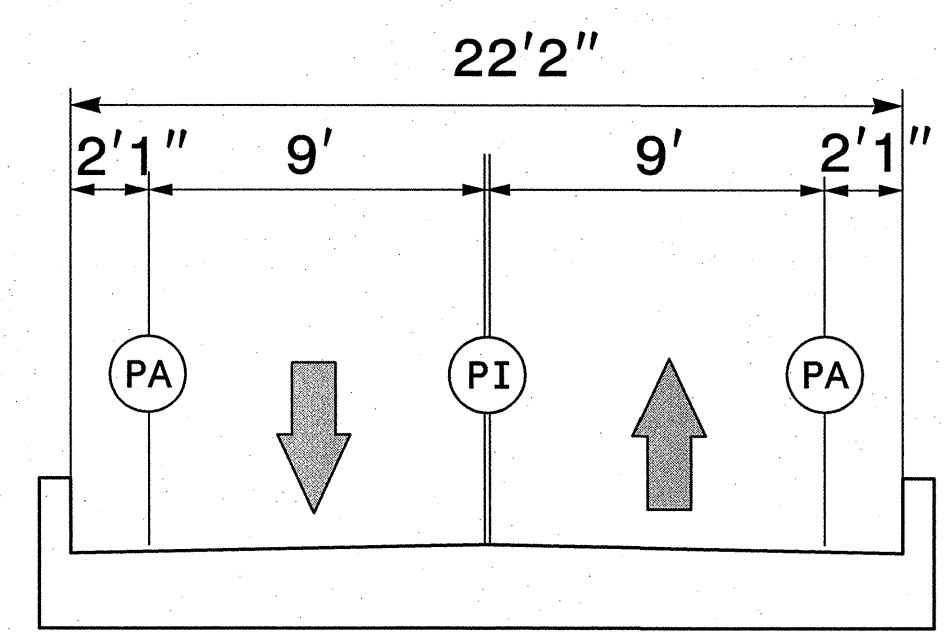
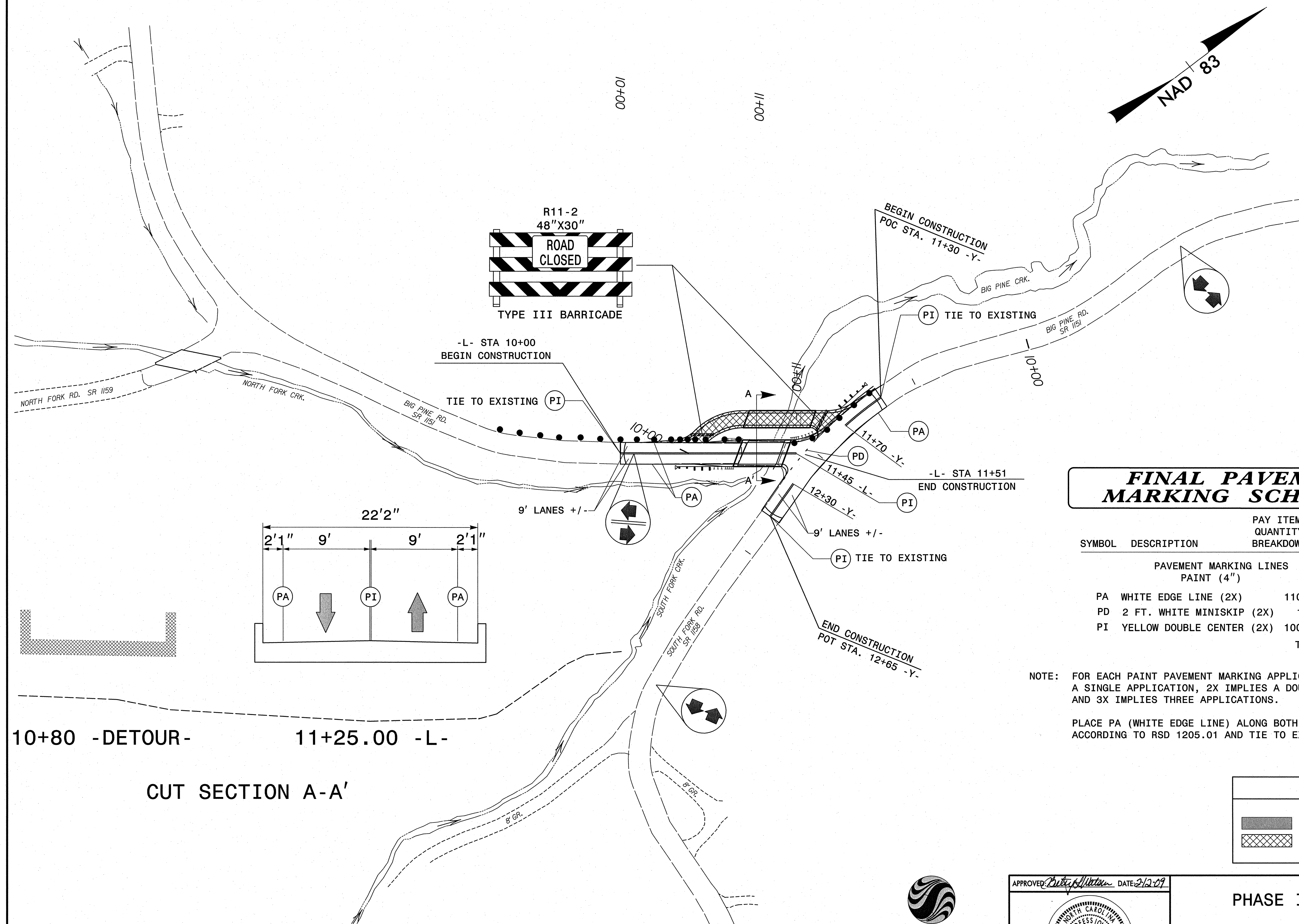
CUT SECTION B-B'



2/12/2009
 us:\traffic\trafficcontrol\tcp\b3869-rc_tcp_05a.dgn
 gkarageorge



APPROVED: <i>[Signature]</i> DATE: 2-12-09	PHASE II CUT SECTIONS							
	SCALE: NONE							
	DATE: OCT. 2008							
	DWG. BY: JLH							
	DESIGN BY: BLW							
REVIEWED BY: BLW	<table border="1"> <thead> <tr> <th colspan="2">REVISIONS</th> </tr> </thead> <tbody> <tr> <td> </td> <td> </td> </tr> <tr> <td> </td> <td> </td> </tr> </tbody> </table>		REVISIONS					
REVISIONS								
<small>CADD FILE: ...\\tcp\b3869-rc_tcp_05a.dgn</small>								



10+80 -DETOUR- 11+25.00 -L-
CUT SECTION A-A'

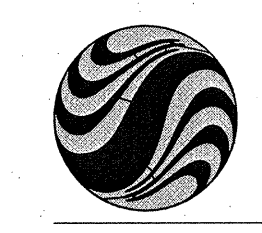
FINAL PAVEMENT MARKING SCHEDULE

SYMBOL	DESCRIPTION	PAY ITEM/ QUANTITY BREAKDOWN	TOTAL QUANTITY
PAVEMENT MARKING LINES PAINT (4")			
PA	WHITE EDGE LINE (2X)	1100 LF	
PD	2 FT. WHITE MINISKIP (2X)	14 LF	
PI	YELLOW DOUBLE CENTER (2X)	1000 LF	
			TOTAL = 2114 LF

NOTE: FOR EACH PAINT PAVEMENT MARKING APPLICATION, 1X IMPLIES A SINGLE APPLICATION, 2X IMPLIES A DOUBLE APPLICATION, AND 3X IMPLIES THREE APPLICATIONS.

PLACE PA (WHITE EDGE LINE) ALONG BOTH EDGES OF NEW PAVEMENT ACCORDING TO RSD 1205.01 AND TIE TO EXISTING EDGE LINES.

LEGEND	
	PROPOSED PAVEMENT
	OBLITERATE



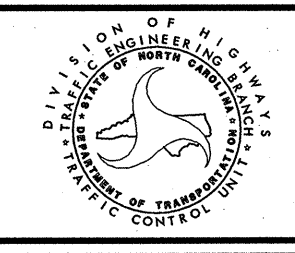
Stantec
 Stantec Consulting Services Inc.
 801 Jones Franklin Road, Suite 300
 Raleigh, NC
 27606
 Tel. 919.851.6866
 Fax. 919.851.7024
 www.stantec.com

APPROVED: *[Signature]* DATE: 2/12/09

SEAL:

PHASE III DETAIL

SCALE: 1" = 40'
 DATE: OCT. 2008
 DWG. BY: JLH
 DESIGN BY: BLW
 REVIEWED BY: BLW



REVISIONS

2/12/2009
 Us:\Traffic\TrafficControl\tcp\3869_tc_tcp_06.dgn
 gkarageorge