

TIP PROJECT: B-3869

STATE OF NORTH CAROLINA
 DIVISION OF HIGHWAYS
 PLAN FOR PROPOSED
 HIGHWAY EROSION CONTROL

MADISON COUNTY

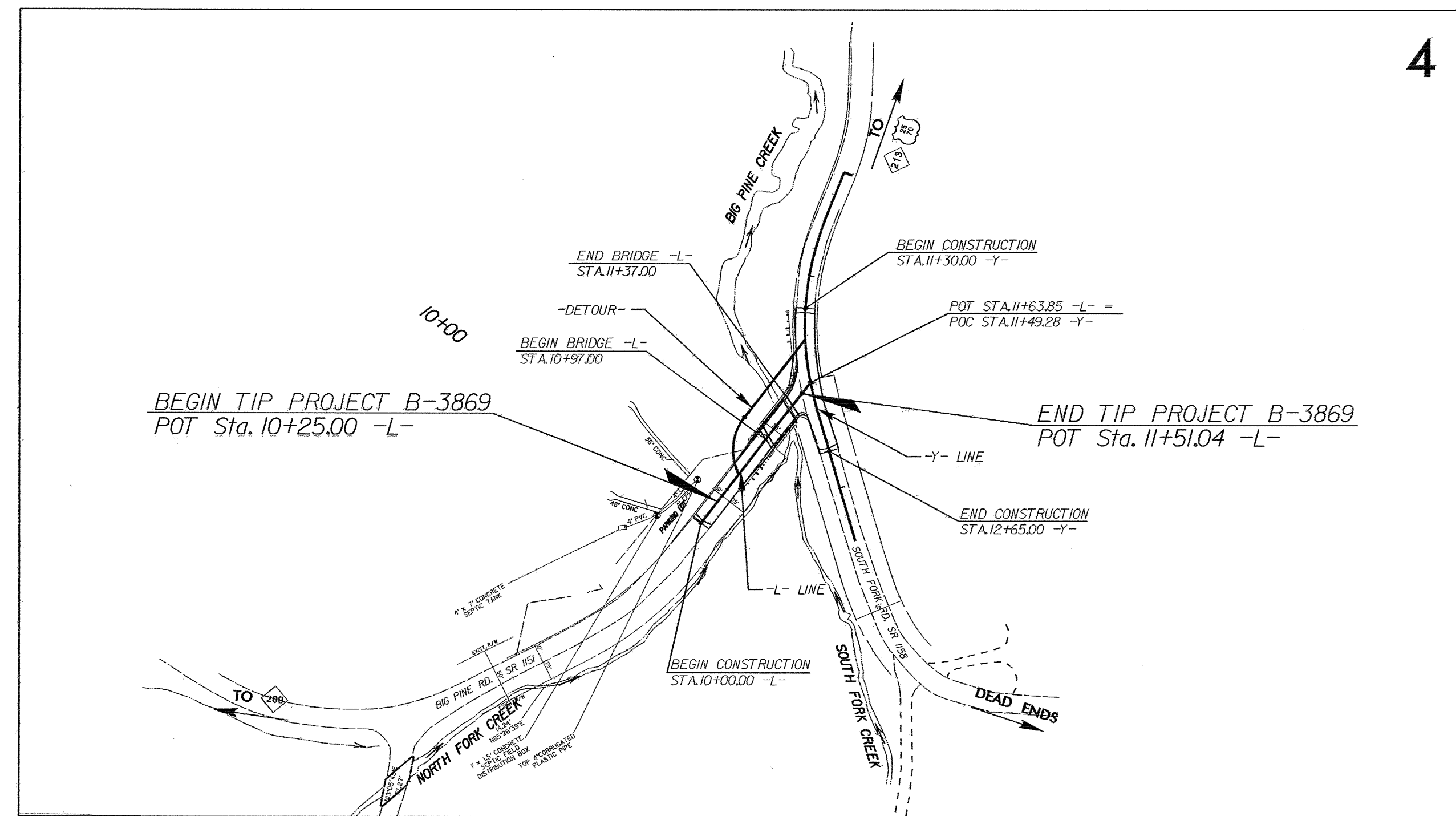
**LOCATION: REPLACE BRIDGE No. 146 OVER
 BIG PINE CREEK ON SR 1151**

TYPE OF WORK: GRADING, PAVING AND STRUCTURE

STATE	STATE PROJECT REFERENCE NO.	SHEET NO.	TOTAL SHEETS
N.C.	B-3869	EC-1	
STATE PROJ. NO.	F.A. PROJ. NO.	DESCRIPTION	

EROSION AND SEDIMENT CONTROL MEASURES

Std. #	Description	Symbol
1630.03	Temporary Silt Ditch	
1630.05	Temporary Diversion	
1605.01	Temporary Silt Fence	
1606.01	Special Sediment Control Fence	
1622.01	Temporary Berms and Slope Drains	
1630.01	Riser Basin	
	Silt Basin Type B	
1633.01	Temporary Rock Silt Check Type-A	
	Temporary Rock Silt Check Type-B	
	Wattle	
1634.01	Temporary Rock Sediment Dam Type-A	
1634.02	Temporary Rock Sediment Dam Type-B	
1635.01	Rock Pipe Inlet Sediment Trap Type-A	
1635.02	Rock Pipe Inlet Sediment Trap Type-B	
1630.04	Stilling Basin	
1630.06	Special Stilling Basin	
	Rock Inlet Sediment Trap:	
1632.01	Type A	
1632.02	Type B	
1632.03	Type C	
	Skimmer Basin	
	Tiered Skimmer Basin	
	Infiltration Basin	



**THIS PROJECT CONTAINS
 EROSION CONTROL PLANS
 FOR CLEARING AND
 GRUBBING PHASE OF
 CONSTRUCTION.**

**THIS PROJECT HAS
 BEEN DESIGNED TO
 SENSITIVE WATERSHED
 STANDARDS.**

**ENVIRONMENTALLY
 SENSITIVE AREA(S) EXIST
 ON THIS PROJECT**
*Refer To E. C. Special Provisions
 for Special Considerations.*

GRAPHIC SCALE

0

PLANS

0

PROFILE (HORIZONTAL)

0

PROFILE (VERTICAL)

ROADSIDE ENVIRONMENTAL UNIT
 DIVISION OF HIGHWAYS
 STATE OF NORTH CAROLINA

Prepared In the Office of:
ROADSIDE ENVIRONMENTAL UNIT
 1 South Wilmington St.
 Raleigh, NC 27611
2006 STANDARD SPECIFICATIONS

Roadway Standard Drawings

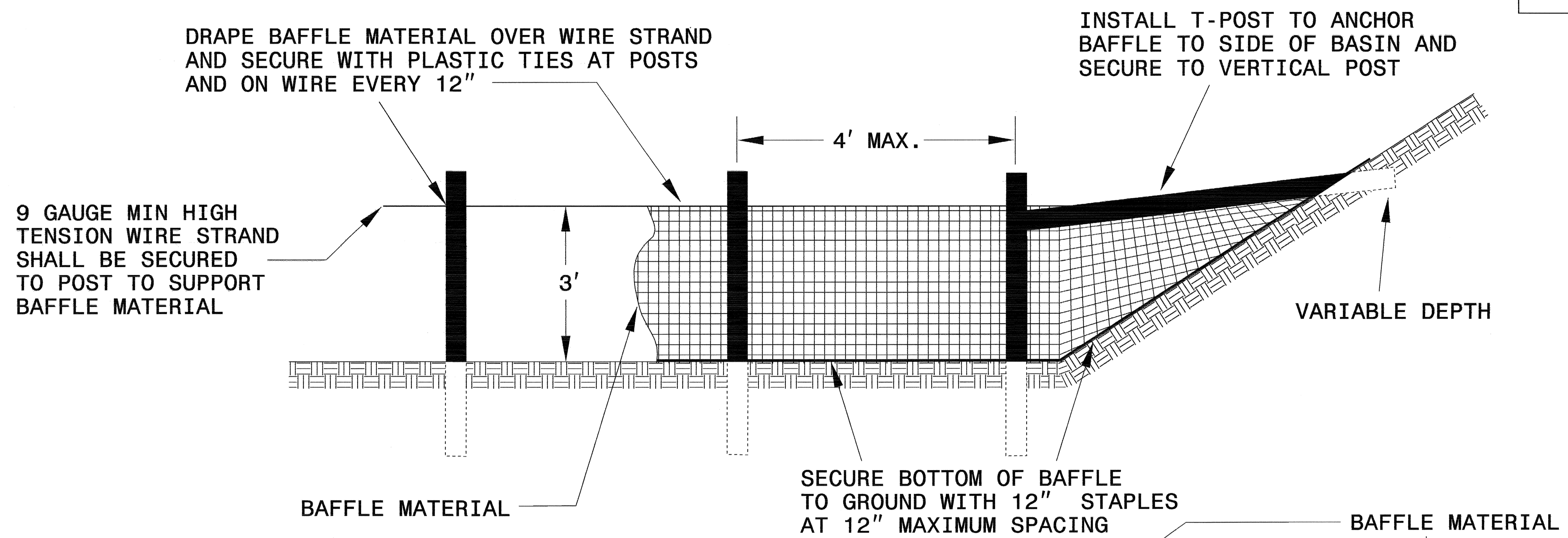
The following roadway english standards as appear in "Roadway Standard Drawings"- Roadway Design Unit - N. C. Department of Transportation - Raleigh, N. C., dated July 18, 2006 and the latest revision thereto are applicable to this project and by reference hereby are considered a part of these plans.

1605.01 Temporary Silt Fence	1633.01 Temporary Rock Silt Check Type A
1606.01 Special Sediment Control Fence	1635.02 Rock Pipe Inlet Sediment Trap Type B
1607.01 Gravel Construction Entrance	
1622.01 Temporary Berms and Slope Drains	

28-SEP-2009 12:23 n:\enviro\2009\1151\ab3869.ec.tsh.dgn

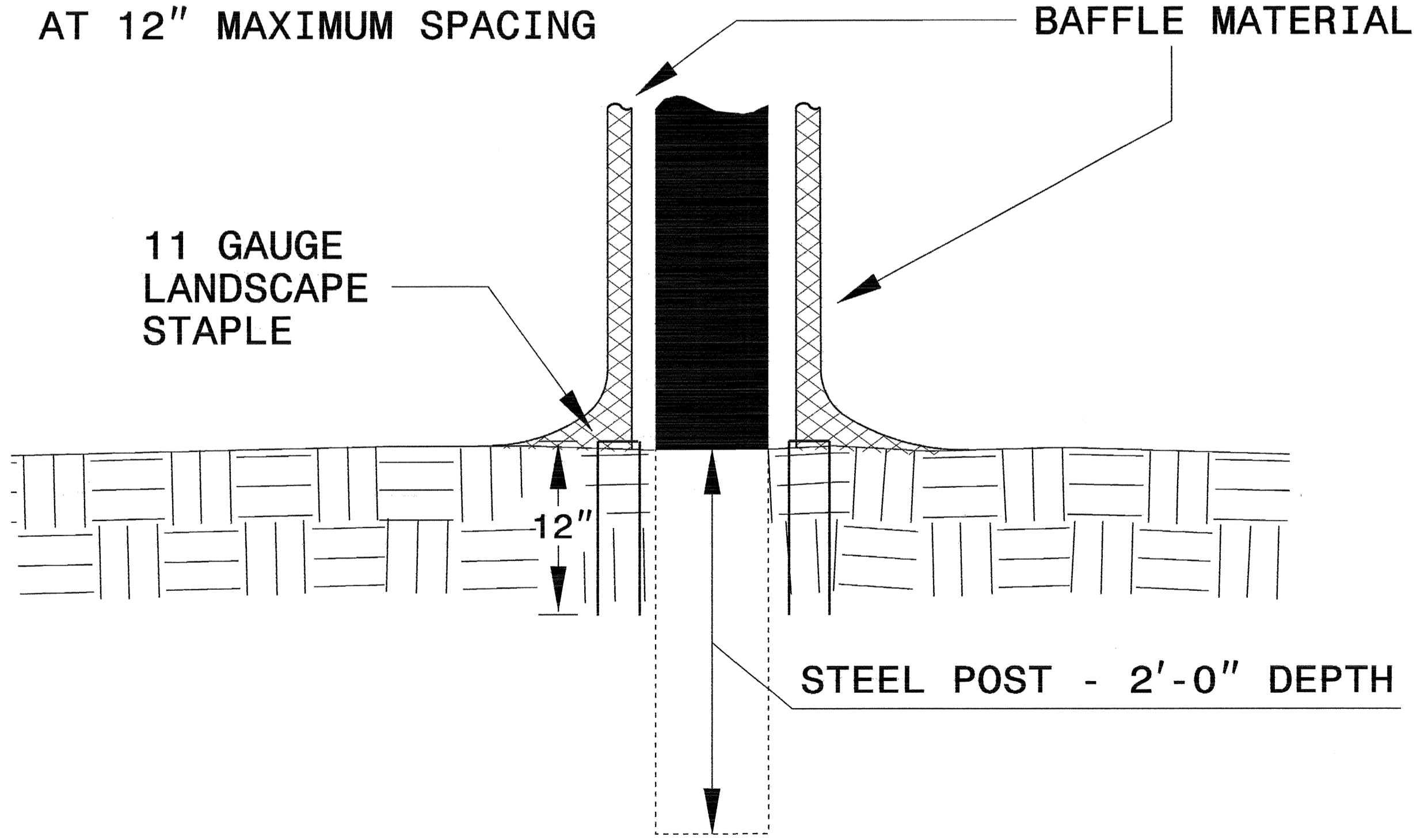
PROJECT REFERENCE NO. B-3869	SHEET NO. EC-2
RW SHEET NO.	
ROADWAY DESIGN ENGINEER	HYDRAULICS ENGINEER

COIR FIBER BAFFLE DETAIL



NOTES:

1. INSTALL THREE(3) COIR FIBER BAFFLES IN SILT BASINS AND SEDIMENT DAMS AT DRAINAGE OUTLETS WITH A SPACING OF 1/4 THE BASIN LENGTH.
2. TWO(2) COIR FIBER BAFFLES CAN BE INSTALLED IN SILT BASINS AND DAMS LESS THAN 20 FT. IN LENGTH WITH A SPACING OF 1/3 THE BASIN LENGTH.
3. TOP HEIGHT OF COIR FIBER BAFFLES SHALL NOT BE BELOW BASE OF EMERGENCY SPILLWAY ELEVATION.

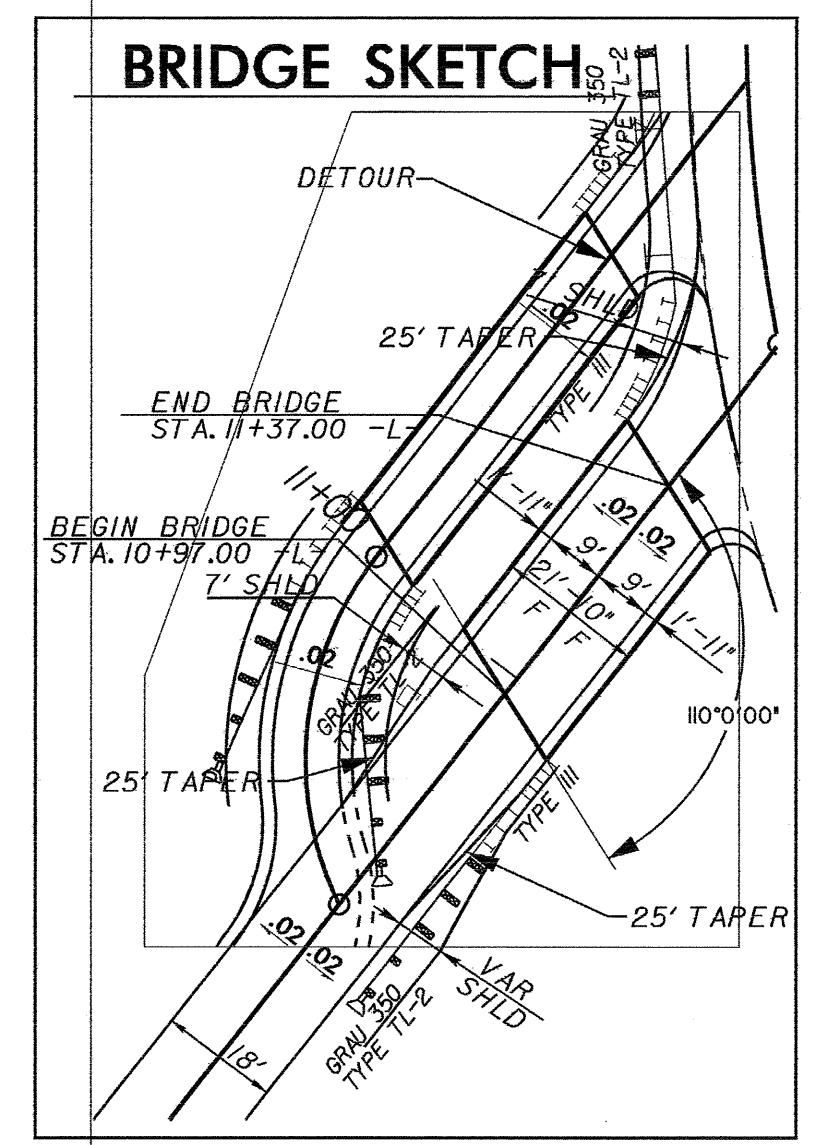
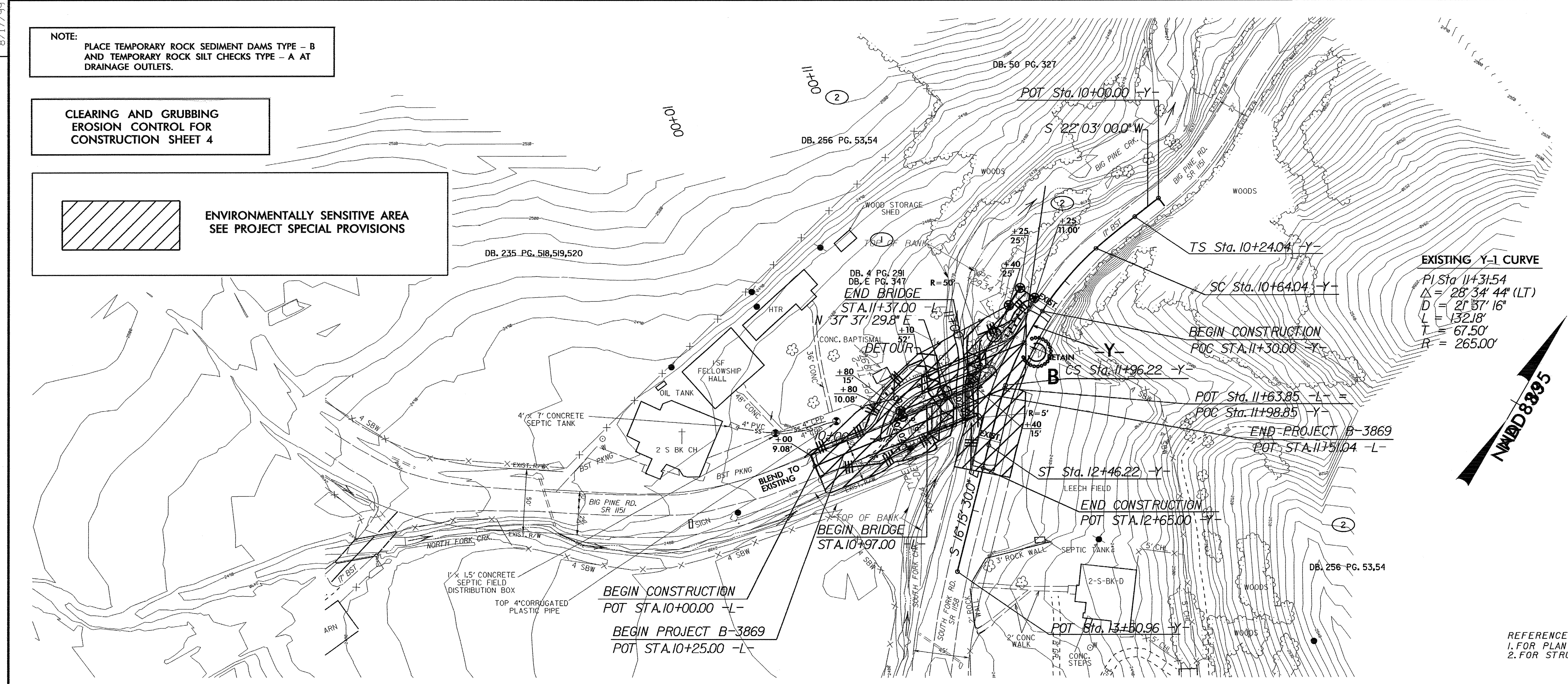


BAFFLE MATERIAL SHALL BE SECURED TO THE BOTTOM AND SIDES OF BASIN USING 12" LANDSCAPE STAPLES

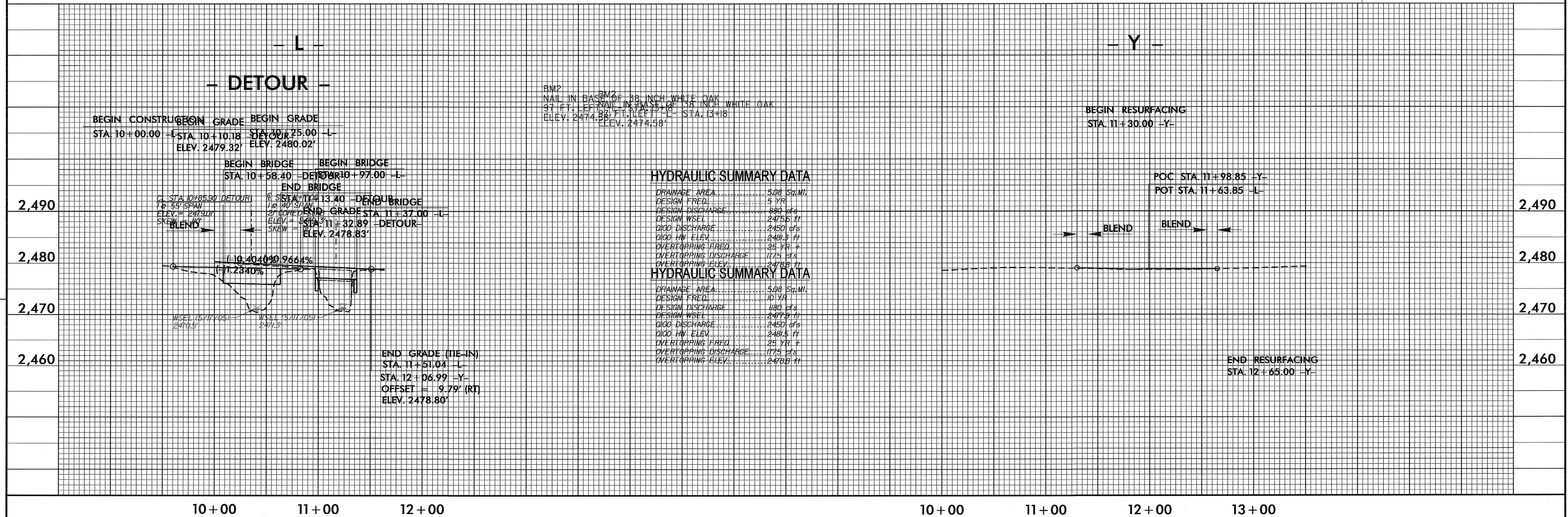
NOTE:
PLACE TEMPORARY ROCK SEDIMENT DAMS TYPE - B
AND TEMPORARY ROCK SILT CHECKS TYPE - A AT
DRAINAGE OUTLETS.

CLEARING AND GRUBBING
EROSION CONTROL FOR
CONSTRUCTION SHEET 4

 ENVIRONMENTALLY SENSITIVE AREA
SEE PROJECT SPECIAL PROVISIONS

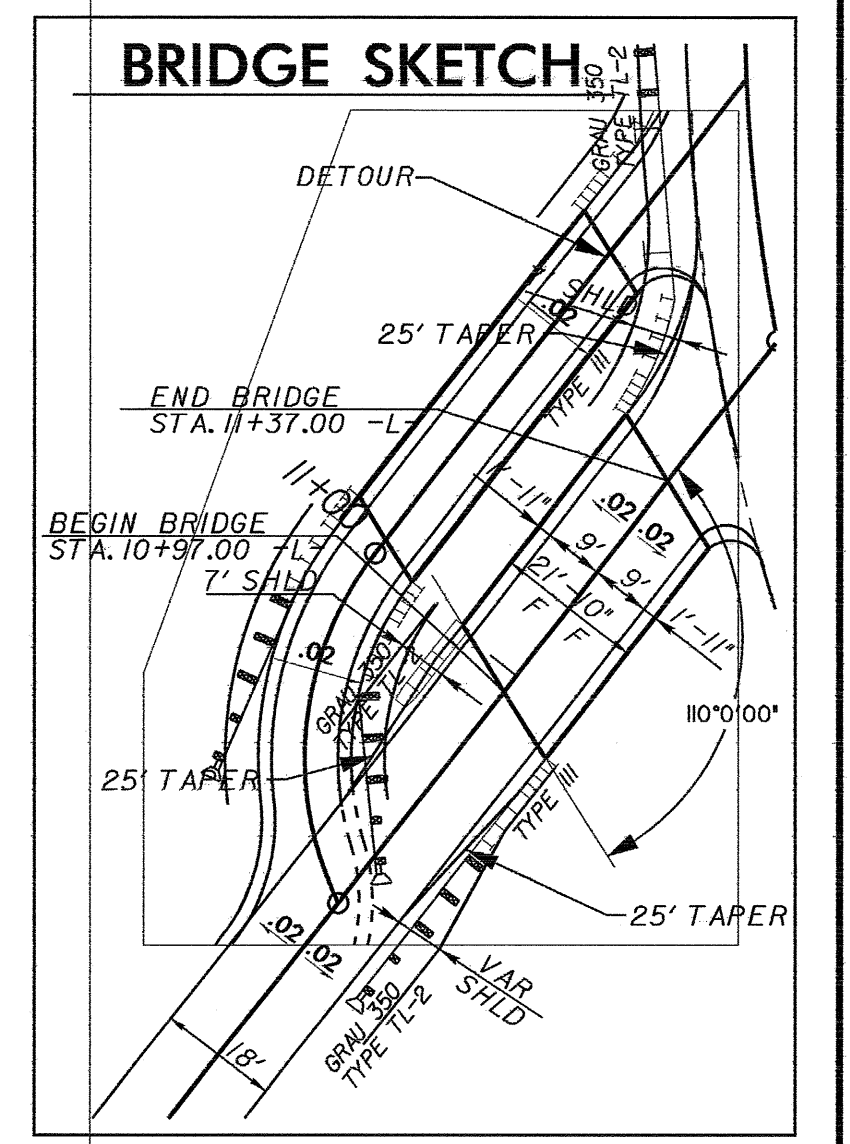
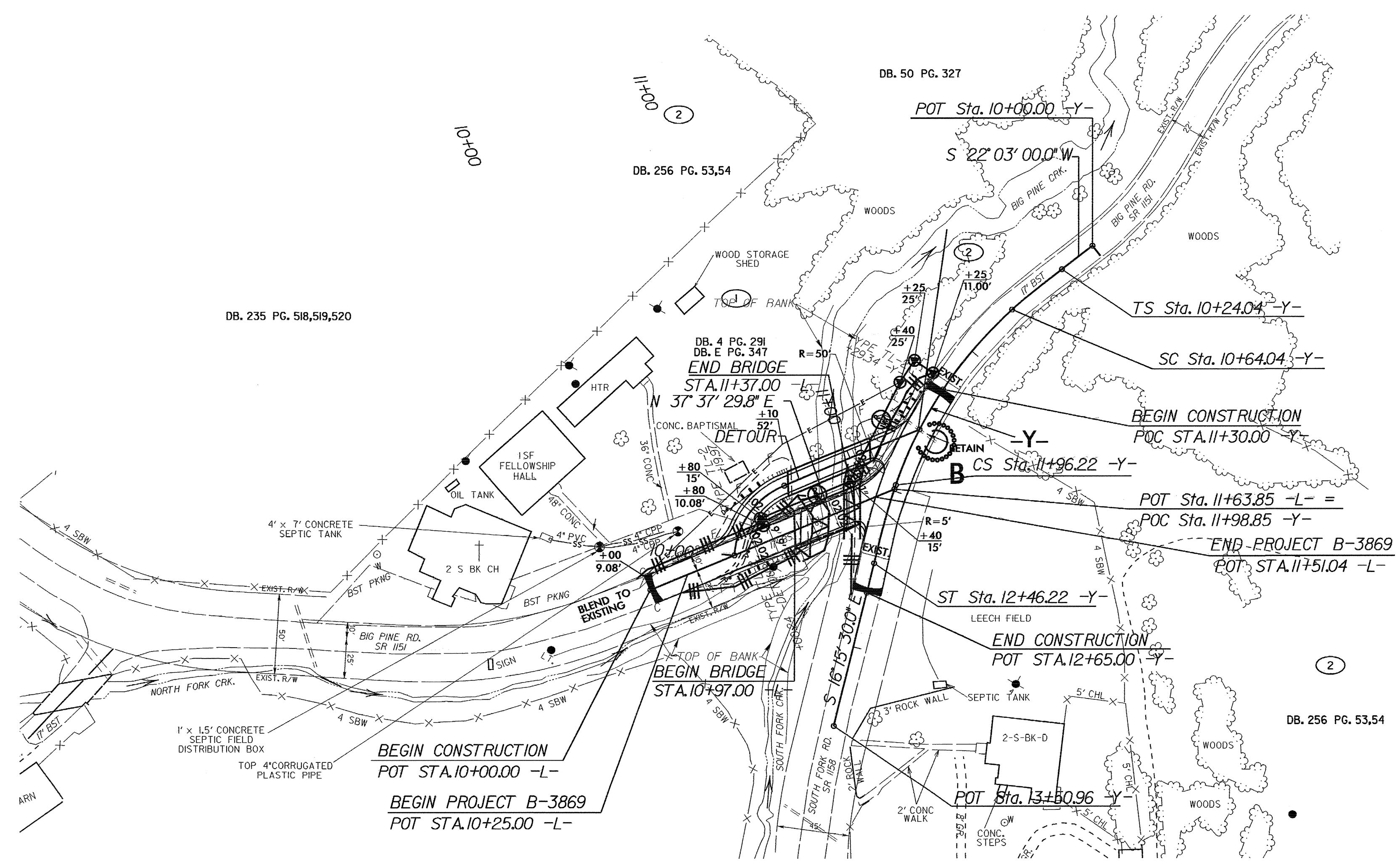


REFERENCE:
1. FOR PLAN & PROFILE OF DETOUR, SEE SHEET NO. 5
2. FOR STRUCTURE PLANS, SEE SHEETS S-1 THRU S-...

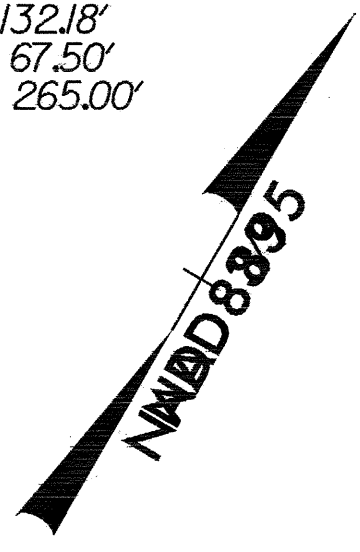


8/17/99

PROJECT REFERENCE NO. B-3869	SHEET NO. EC-4/CONST.4
ROADWAY DESIGN ENGINEER	HYDRAULICS ENGINEER

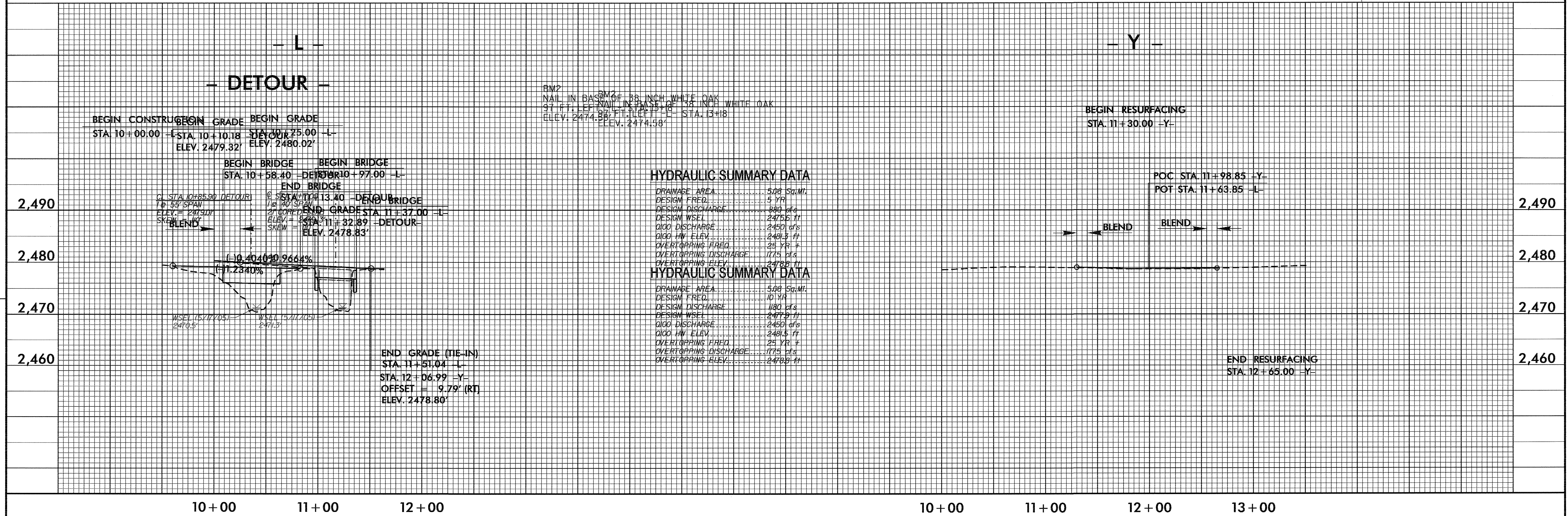


EXISTING Y-1 CURVE
 PI Sta. 11+31.54
 Δ = 28° 34' 44" (LT)
 D = 21° 37' 16"
 L = 13218'
 T = 67.50'
 R = 265.00'



REFERENCE:
 1. FOR PLAN & PROFILE OF DETOUR, SEE SHEET NO. 5
 2. FOR STRUCTURE PLANS, SEE SHEETS S-1 THRU S-...

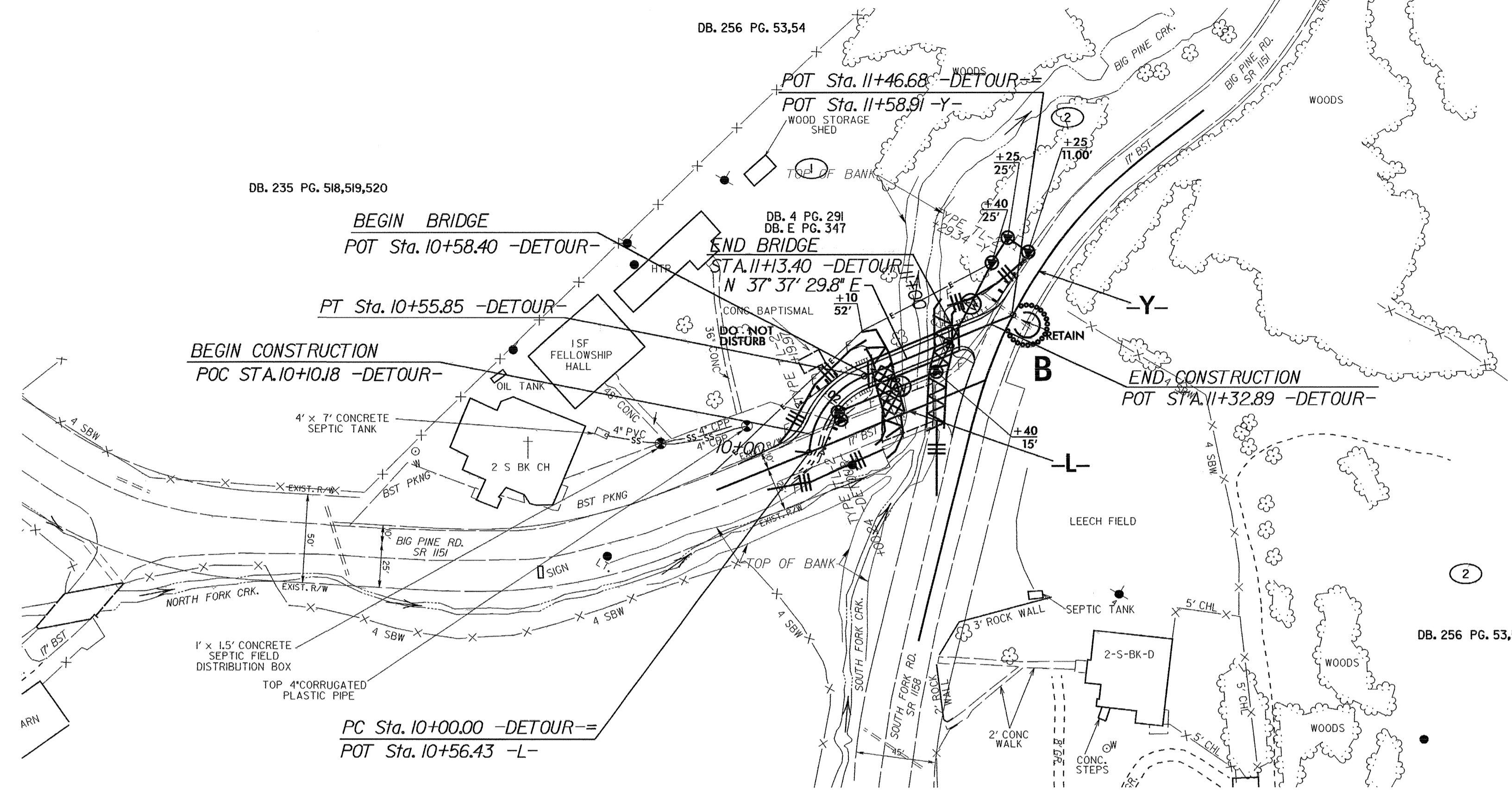
REVISIONS



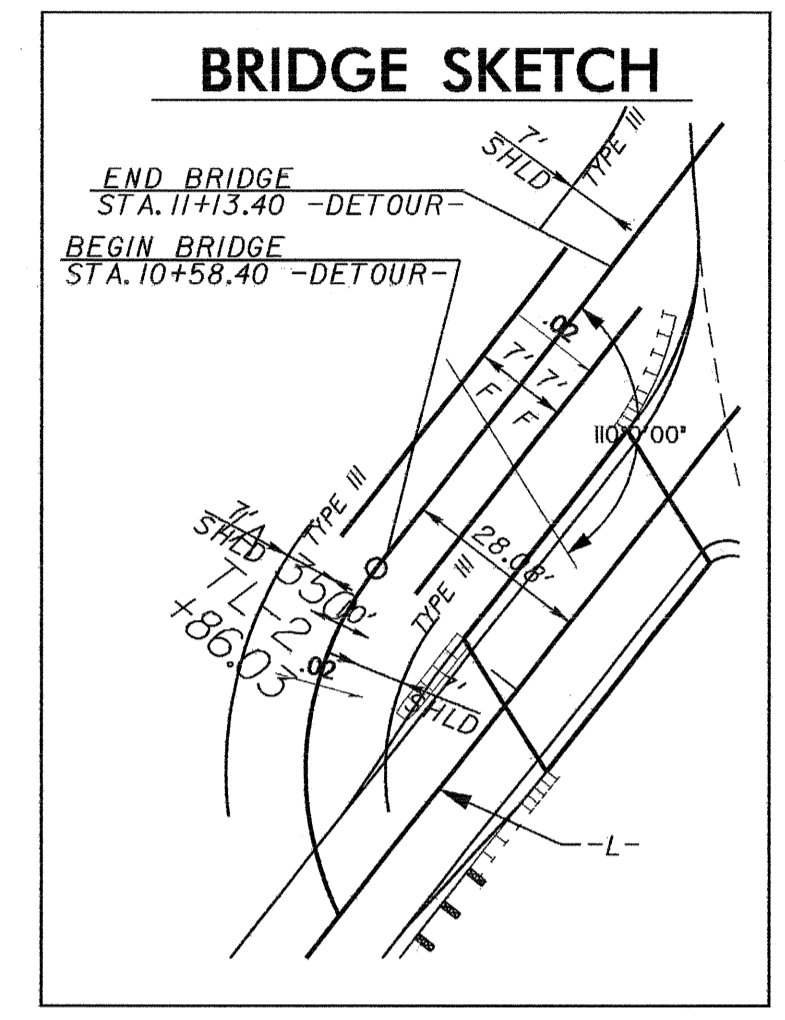
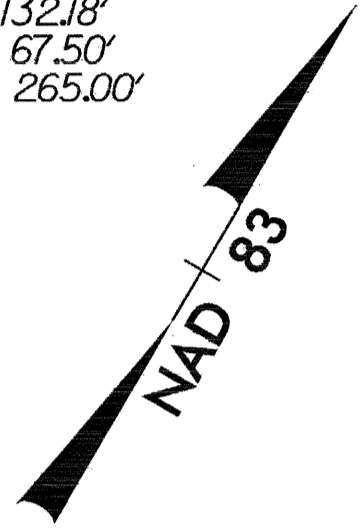
8/17/99

DETOUR

PROJECT REFERENCE NO. B-3869	SHEET NO. EC-5/CONST.5
ROADWAY DESIGN ENGINEER	HYDRAULICS ENGINEER



EXISTING Y-1 CURVE
 PI Sta 11+31.54
 $\Delta = 28^\circ 34' 44"$ (LT)
 D = 21' 37" 16"
 L = 132.18'
 T = 67.50'
 R = 265.00'



REFERENCE:
 1. FOR PLAN & PROFILE OF L-LINE, SEE SHEET NO. 4
 2. FOR STRUCTURE PLANS, SEE SHEETS S-1 THRU S-...

REVISIONS

